

Data Path : Z:\pestpcbsrv\HPCHEM1\ECD_L\Data\PL071619\
 Data File : PL050444.D
 Signal(s) : Signal #1: ECD1A.ch Signal #2: ECD2B.ch
 Acq On : 17 Jul 2019 03:07
 Operator : SM\AJ
 Sample : K3782-04
 Misc :
 ALS Vial : 59 Sample Multiplier: 1

Instrument :
 ECD_L
 ClientSampleId :
 KY030LC015-SW-190711

Integration File signal 1: autoint1.e
 Integration File signal 2: autoint2.e
 Quant Time: Jul 17 04:24:15 2019
 Quant Method : Z:\pestpcbsrv\HPCHEM1\ECD_L\methods\PL062019.M
 Quant Title : GC Extractables
 QLast Update : Fri Jun 21 02:23:20 2019
 Response via : Initial Calibration
 Integrator: ChemStation

Volume Inj. : 1 µl
 Signal #1 Phase : ZB-MR2 Signal #2 Phase: ZB-MR1
 Signal #1 Info : 30M x 0.32mm x0.2 Signal #2 Info : 30M x 0.32mm x0.5µm

Compound	RT#1	RT#2	Resp#1	Resp#2	ng/ml	ng/ml
----------	------	------	--------	--------	-------	-------

 System Monitoring Compounds

1) SA Tetrachlo...	3.318	3.931	179.9E6	51920648	15.949	16.958
28) SA Decachlor...	7.980	8.961	154.8E6	45463461	12.185	13.543

Target Compounds

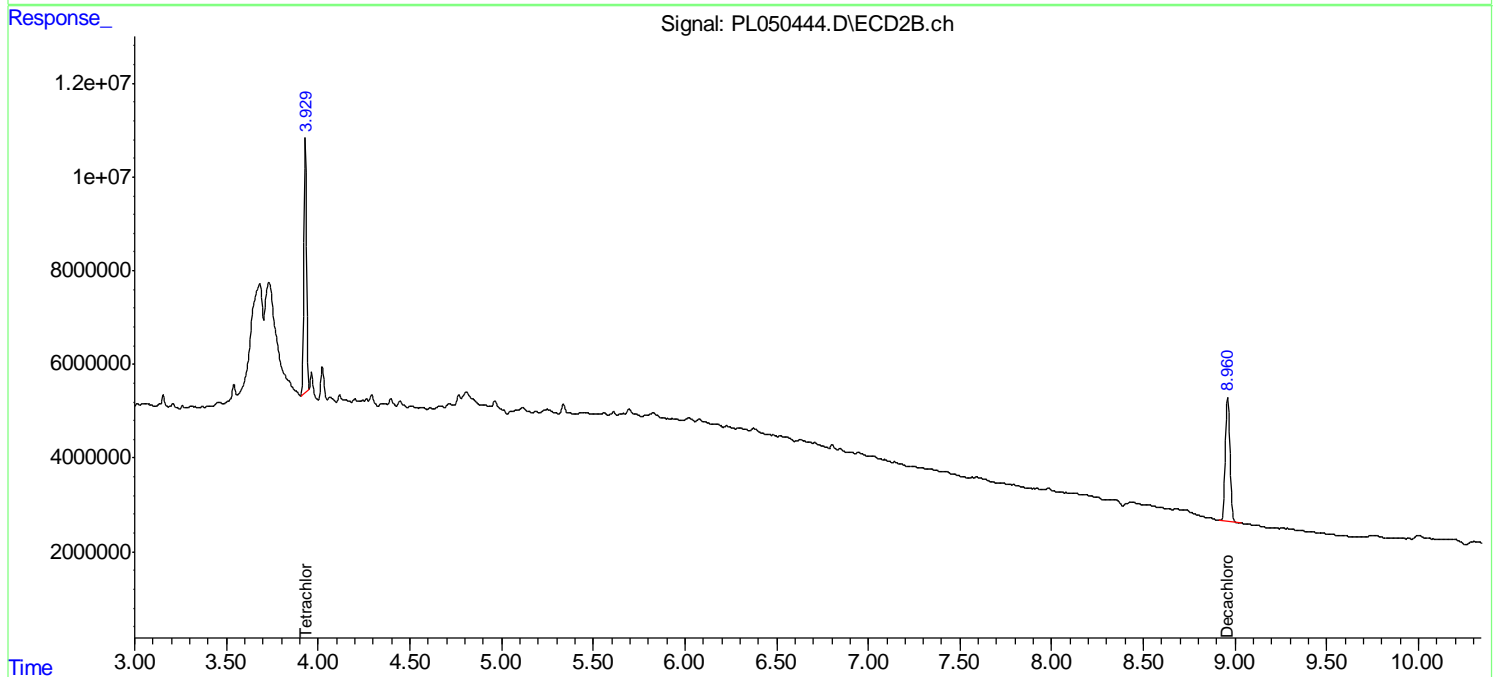
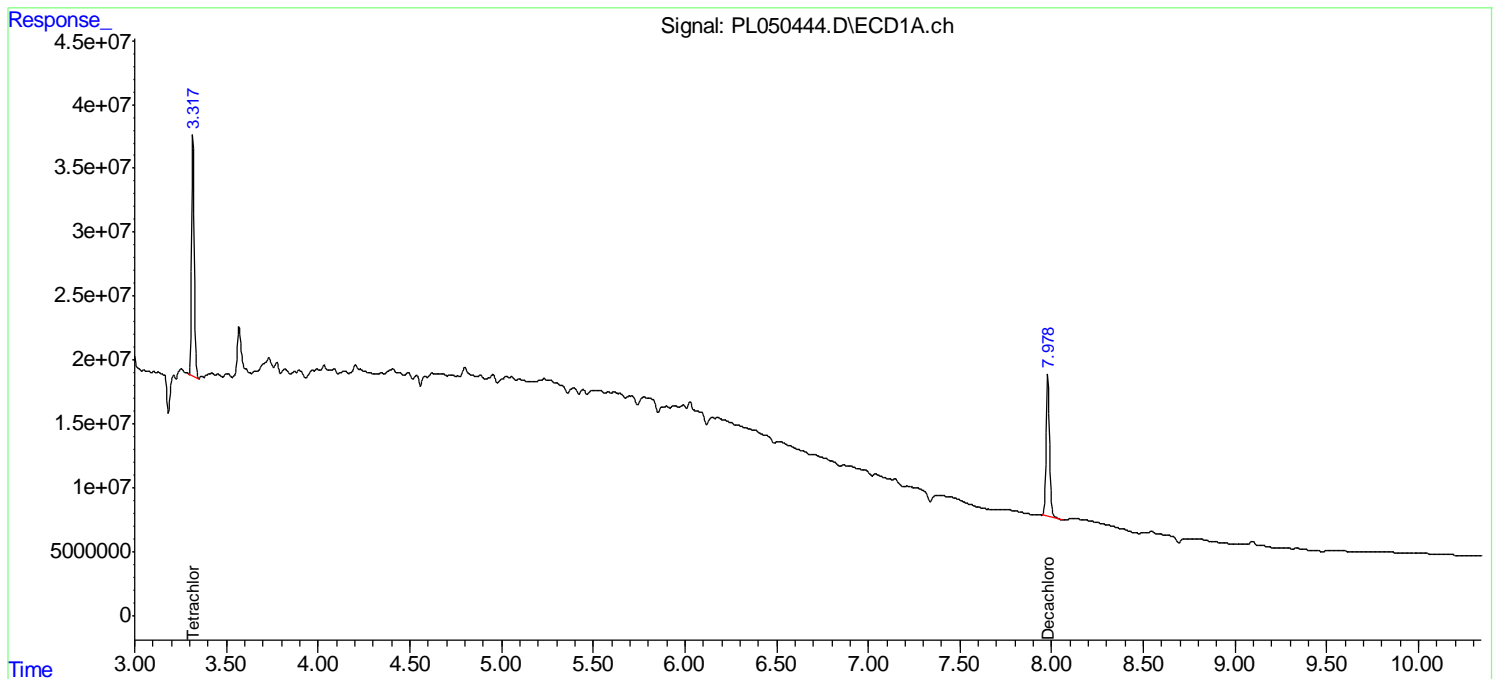
(f)=RT Delta > 1/2 Window (#)=Amounts differ by > 25% (m)=manual int.

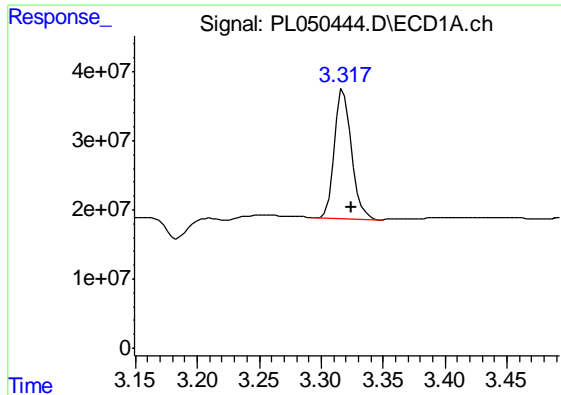
Data Path : Z:\pestpcbsrv\HPCHEM1\ECD_L\Data\PL071619\
 Data File : PL050444.D
 Signal(s) : Signal #1: ECD1A.ch Signal #2: ECD2B.ch
 Acq On : 17 Jul 2019 03:07
 Operator : SM\AJ
 Sample : K3782-04
 Misc :
 ALS Vial : 59 Sample Multiplier: 1

Instrument :
 ECD_L
ClientSampleId :
 KY030LC015-SW-190711

Integration File signal 1: autoint1.e
 Integration File signal 2: autoint2.e
 Quant Time: Jul 17 04:24:15 2019
 Quant Method : Z:\pestpcbsrv\HPCHEM1\ECD_L\methods\PL062019.M
 Quant Title : GC Extractables
 QLast Update : Fri Jun 21 02:23:20 2019
 Response via : Initial Calibration
 Integrator: ChemStation

Volume Inj. : 1 µl
 Signal #1 Phase : ZB-MR2 Signal #2 Phase: ZB-MR1
 Signal #1 Info : 30M x 0.32mm x0.2 Signal #2 Info : 30M x 0.32mm x0.5µm

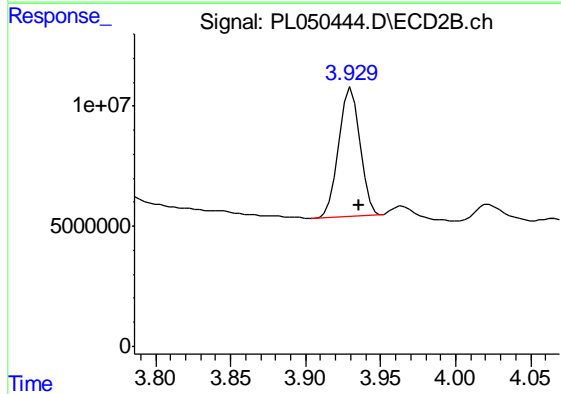




#1 Tetrachloro-m-xylene

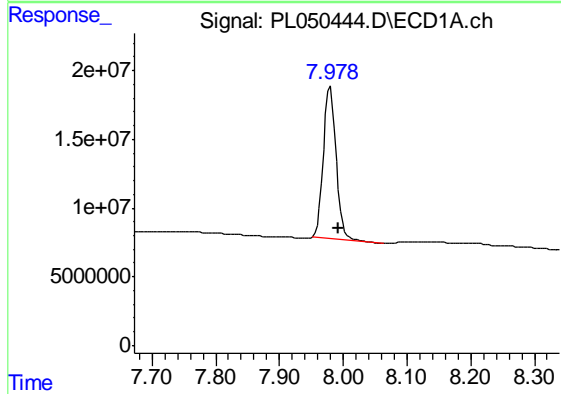
R.T.: 3.318 min
 Delta R.T.: -0.006 min
 Response: 179872443
 Conc: 15.95 ng/ml

Instrument :
 ECD_L
 ClientSampleId :
 KY030LC015-SW-190711



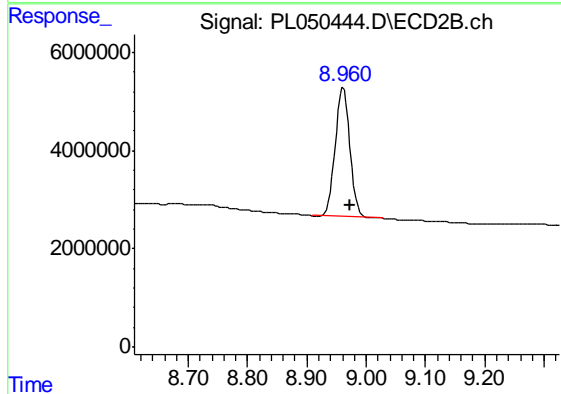
#1 Tetrachloro-m-xylene

R.T.: 3.931 min
 Delta R.T.: -0.005 min
 Response: 51920648
 Conc: 16.96 ng/ml



#28 Decachlorobiphenyl

R.T.: 7.980 min
 Delta R.T.: -0.012 min
 Response: 154830171
 Conc: 12.19 ng/ml



#28 Decachlorobiphenyl

R.T.: 8.961 min
 Delta R.T.: -0.012 min
 Response: 45463461
 Conc: 13.54 ng/ml