

Data Path : Z:\pestpcbsrv\HPCHEM1\ECD_L\Data\PL071723\
 Data File : PL083969.D
 Signal(s) : Signal #1: ECD1A.ch Signal #2: ECD2B.ch
 Acq On : 17 Jul 2023 12:45
 Operator : ARVAJ
 Sample : 03501-05DL 5X
 Misc :
 ALS Vial : 10 Sample Multiplier: 1

Instrument :

ECD_L

ClientSampleId :

A46W2DL

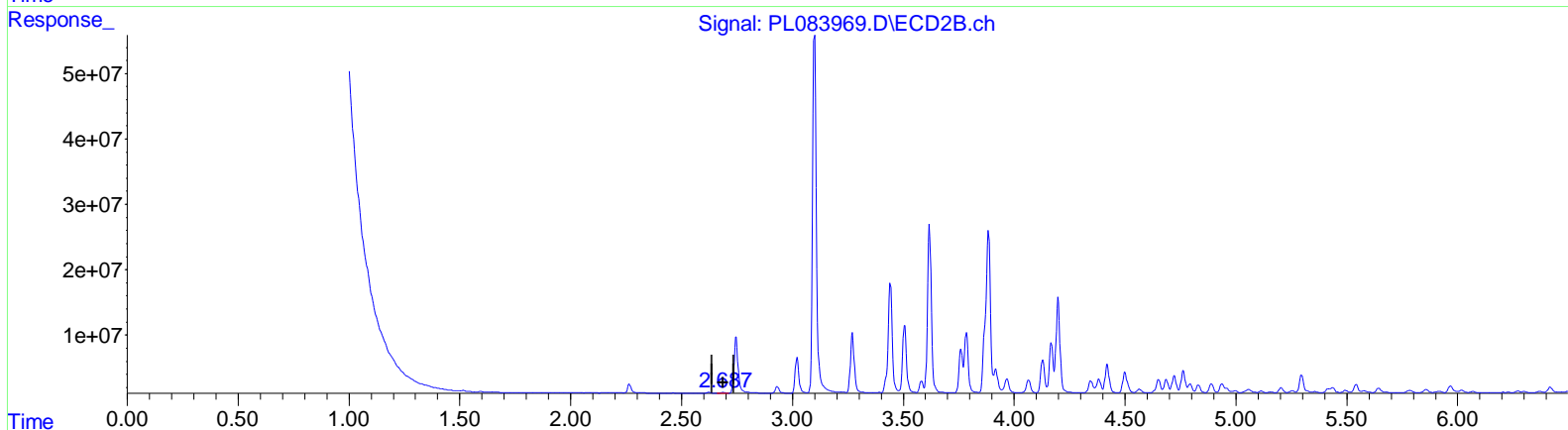
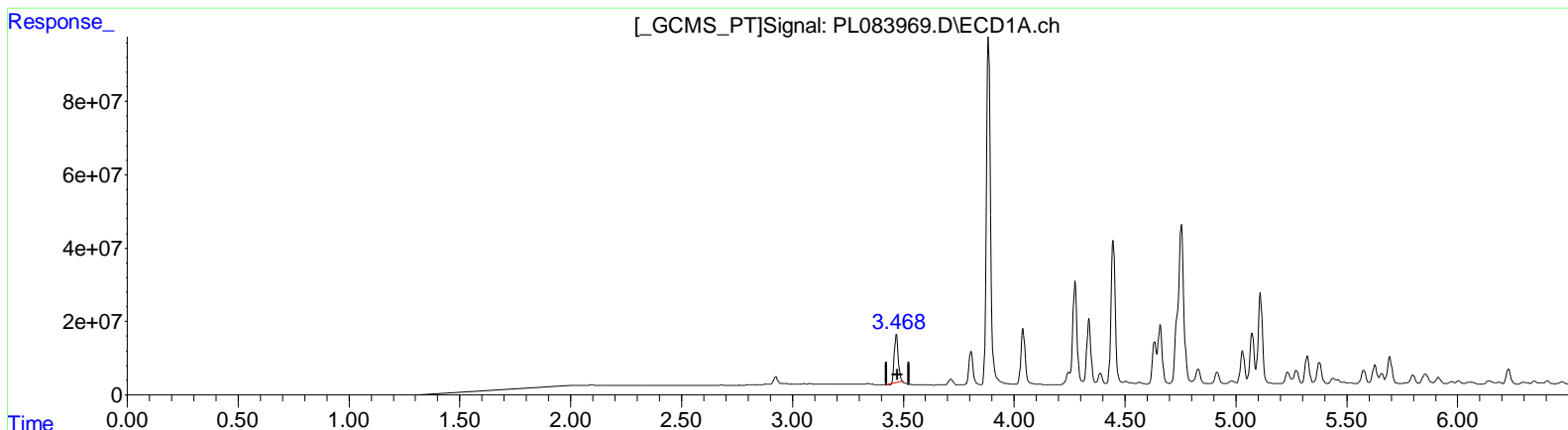
Manual IntegrationsAPPROVED

Reviewed By :Abdul Mirza 07/18/2023

Supervised By :Ankita Jodhani 07/18/2023

Integration File signal 1: autoint1.e
 Integration File signal 2: autoint2.e
 Quant Time: Jul 18 00:45:15 2023
 Quant Method : Z:\pestpcbsrv\HPCHEM1\ECD_L\methods\PL071523CLP.M
 Quant Title : GC Extractables
 QLast Update : Sat Jul 15 05:26:27 2023
 Response via : Initial Calibration
 Integrator: ChemStation

Volume Inj. : 1 µl
 Signal #1 Phase : ZB-MR2 Signal #2 Phase: ZB-MR1
 Signal #1 Info : 30M x 0.32mm x0.2 Signal #2 Info : 30M x 0.32mm x 0.50µm



(1) Tetrachloro-m-xylene (SA)

3.469min 77.995 ng/ml

response 161748787

(1) Tetrachloro-m-xylene #2 (SA)

2.688min 1.464 ng/ml

response 1502969

Data Path : Z:\pestpcbsrv\HPCHEM1\ECD_L\Data\PL071723\
 Data File : PL083969.D
 Signal(s) : Signal #1: ECD1A.ch Signal #2: ECD2B.ch
 Acq On : 17 Jul 2023 12:45
 Operator : ARVAJ
 Sample : 03501-05DL 5X
 Misc :
 ALS Vial : 10 Sample Multiplier: 1

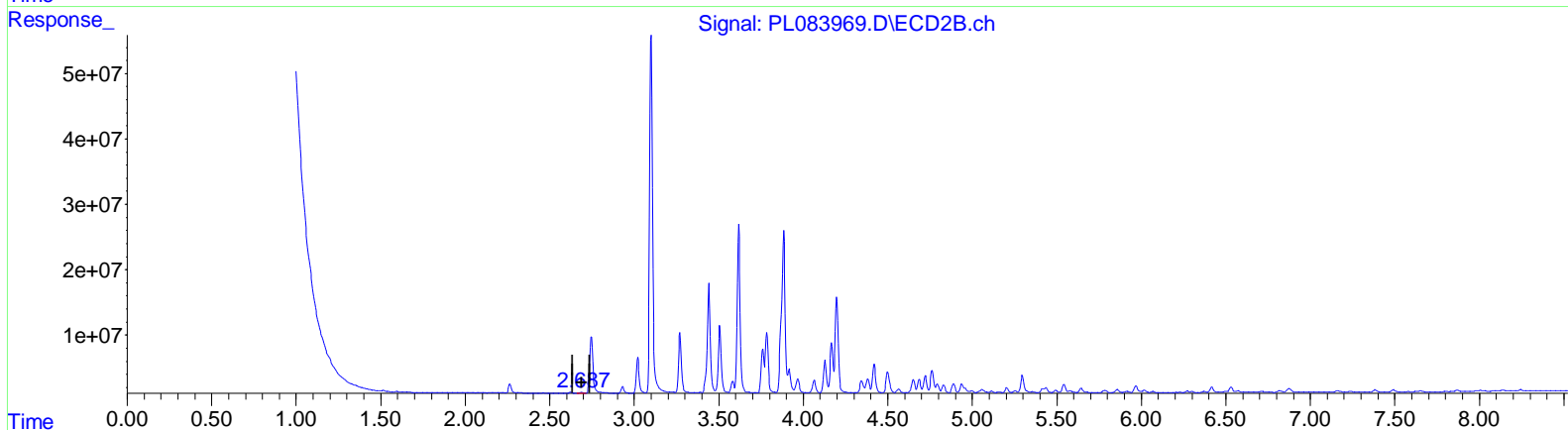
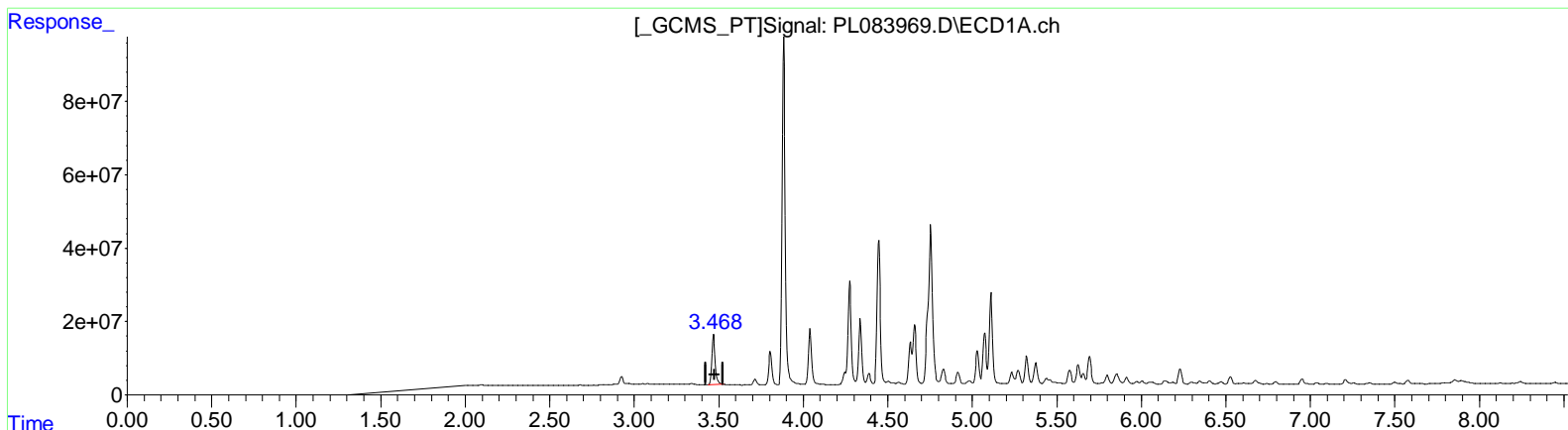
Instrument :
 ECD_L
ClientSampleId :
 A46W2DL

Manual Integrations APPROVED

Reviewed By : Abdul Mirza 07/18/2023
 Supervised By : Ankita Jodhani 07/18/2023

Integration File signal 1: autoint1.e
 Integration File signal 2: autoint2.e
 Quant Time: Jul 18 00:45:15 2023
 Quant Method : Z:\pestpcbsrv\HPCHEM1\ECD_L\methods\PL071523CLP.M
 Quant Title : GC Extractables
 QLast Update : Sat Jul 15 05:26:27 2023
 Response via : Initial Calibration
 Integrator: ChemStation

Volume Inj. : 1 µl
 Signal #1 Phase : ZB-MR2 Signal #2 Phase: ZB-MR1
 Signal #1 Info : 30M x 0.32mm x 0.2 Signal #2 Info : 30M x 0.32mm x 0.50µm



(1) Tetrachloro-m-xylene (SA)
 3.468min 89.476 ng/ml m
 response 185560073

(1) Tetrachloro-m-xylene #2 (SA)
 2.688min 1.464 ng/ml
 response 1502969

Data Path : Z:\pestpcbsrv\HPCHEM1\ECD_L\Data\PL071723\
 Data File : PL083969.D
 Signal(s) : Signal #1: ECD1A.ch Signal #2: ECD2B.ch
 Acq On : 17 Jul 2023 12:45
 Operator : ARVAJ
 Sample : 03501-05DL 5X
 Misc :
 ALS Vial : 10 Sample Multiplier: 1

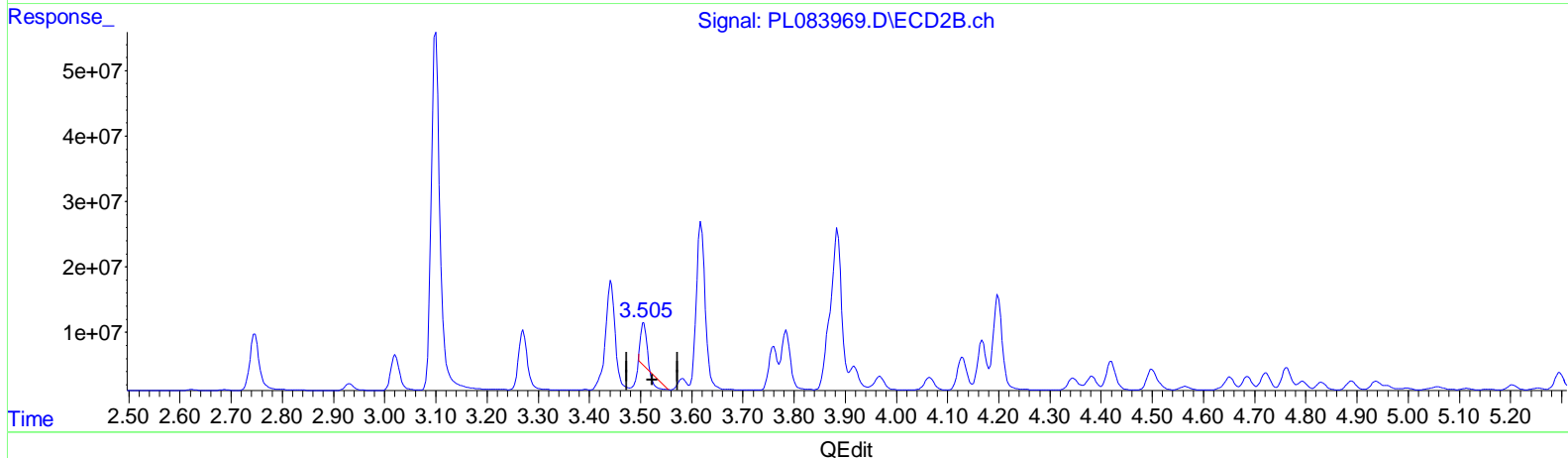
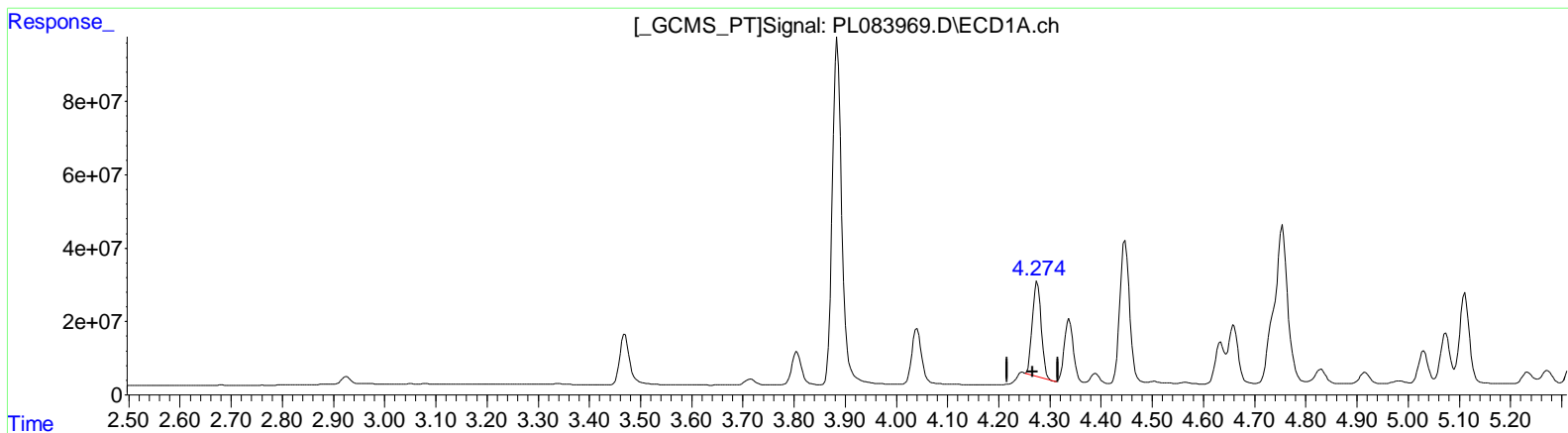
Instrument :
 ECD_L
 ClientSampleId :
 A46W2DL

Manual Integrations APPROVED

Reviewed By : Abdul Mirza 07/18/2023
 Supervised By : Ankita Jodhani 07/18/2023

Integration File signal 1: autoint1.e
 Integration File signal 2: autoint2.e
 Quant Time: Jul 18 00:45:15 2023
 Quant Method : Z:\pestpcbsrv\HPCHEM1\ECD_L\methods\PL071523CLP.M
 Quant Title : GC Extractables
 QLast Update : Sat Jul 15 05:26:27 2023
 Response via : Initial Calibration
 Integrator: ChemStation

Volume Inj. : 1 µl
 Signal #1 Phase : ZB-MR2 Signal #2 Phase: ZB-MR1
 Signal #1 Info : 30M x 0.32mm x 0.2 Signal #2 Info : 30M x 0.32mm x 0.50µm



(3) gamma-BHC (Lindane) (MA)
 4.275min 110.341 ng/ml
 response 311299698

(3) gamma-BHC (Lindane) #2 (MA)
 3.506min 21.369 ng/ml
 response 29510902

Data Path : Z:\pestpcbsrv\HPCHEM1\ECD_L\Data\PL071723\
 Data File : PL083969.D
 Signal(s) : Signal #1: ECD1A.ch Signal #2: ECD2B.ch
 Acq On : 17 Jul 2023 12:45
 Operator : ARVAJ
 Sample : 03501-05DL 5X
 Misc :
 ALS Vial : 10 Sample Multiplier: 1

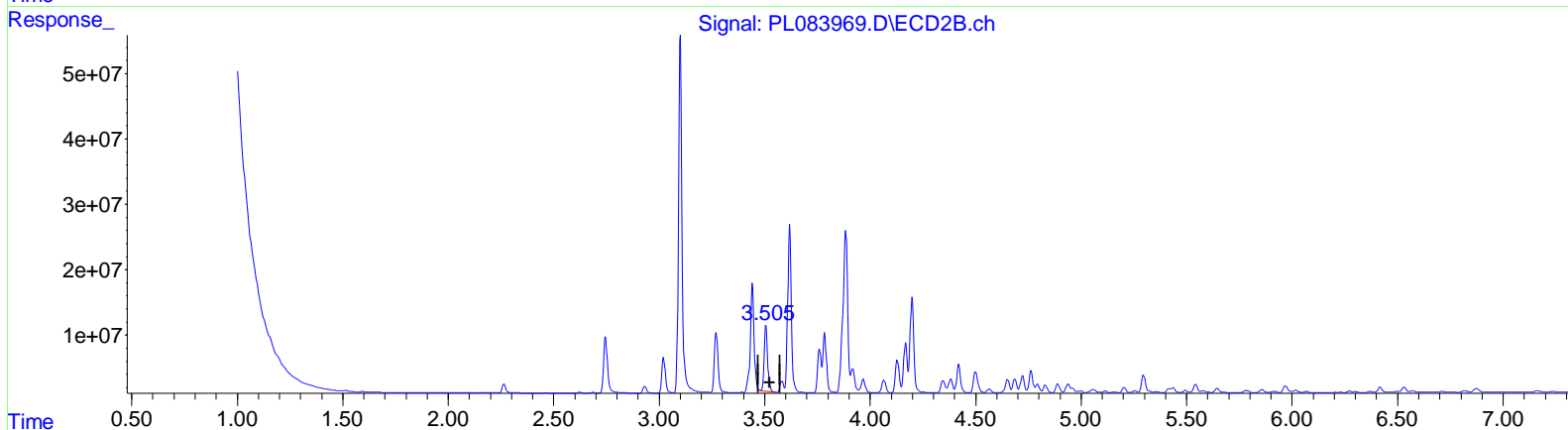
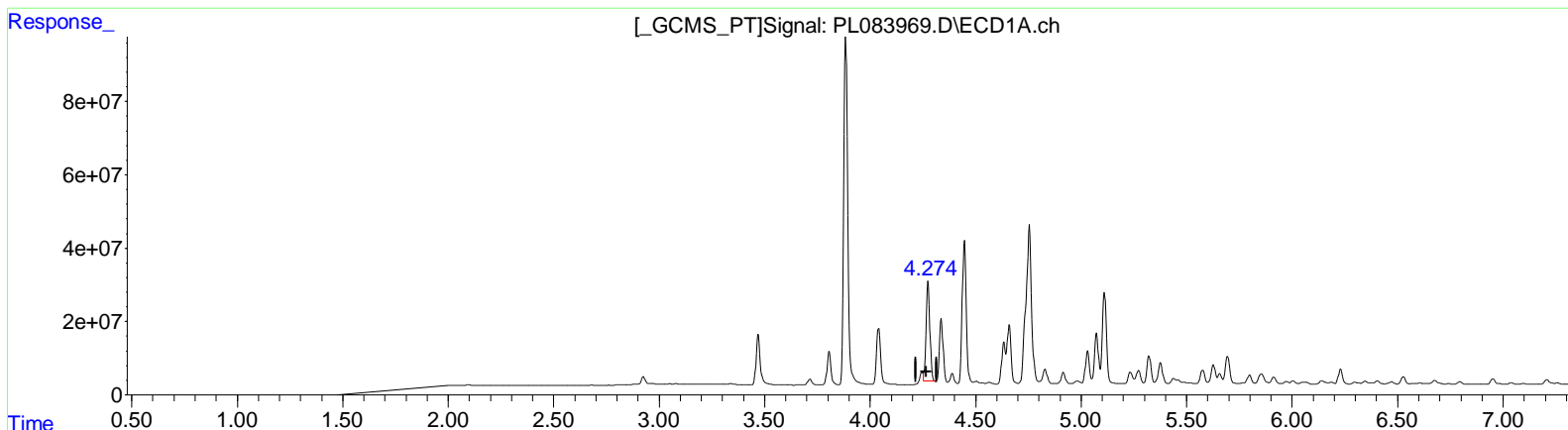
Instrument :
 ECD_L
ClientSampleId :
 A46W2DL

Manual IntegrationsAPPROVED

Reviewed By :Abdul Mirza 07/18/2023
 Supervised By :Ankita Jodhani 07/18/2023

Integration File signal 1: autoint1.e
 Integration File signal 2: autoint2.e
 Quant Time: Jul 18 00:45:15 2023
 Quant Method : Z:\pestpcbsrv\HPCHEM1\ECD_L\methods\PL071523CLP.M
 Quant Title : GC Extractables
 QLast Update : Sat Jul 15 05:26:27 2023
 Response via : Initial Calibration
 Integrator: ChemStation

Volume Inj. : 1 µl
 Signal #1 Phase : ZB-MR2 Signal #2 Phase: ZB-MR1
 Signal #1 Info : 30M x 0.32mm x0.2 Signal #2 Info : 30M x 0.32mm x 0.50µm



QEdit

(3) gamma-BHC (Lindane) (MA)
 4.274min 122.657 ng/ml m
 response 346048355

(3) gamma-BHC (Lindane) #2 (MA)
 3.505min 87.011 ng/ml m
 response 120164235

Data Path : Z:\pestpcbsrv\HPCHEM1\ECD_L\Data\PL071723\
 Data File : PL083969.D
 Signal(s) : Signal #1: ECD1A.ch Signal #2: ECD2B.ch
 Acq On : 17 Jul 2023 12:45
 Operator : ARVAJ
 Sample : 03501-05DL 5X
 Misc :
 ALS Vial : 10 Sample Multiplier: 1

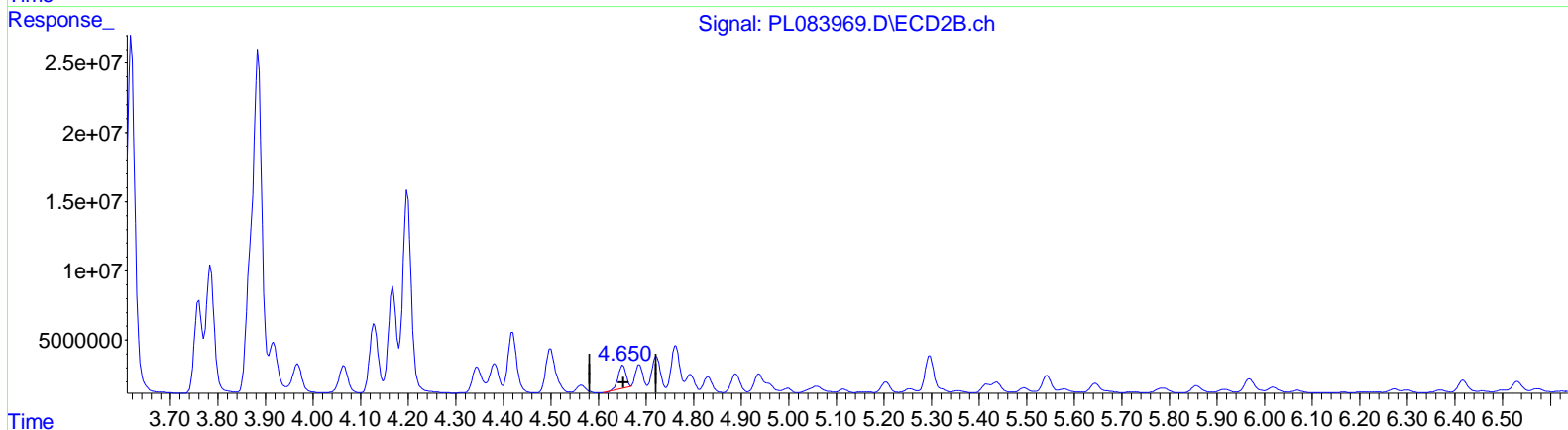
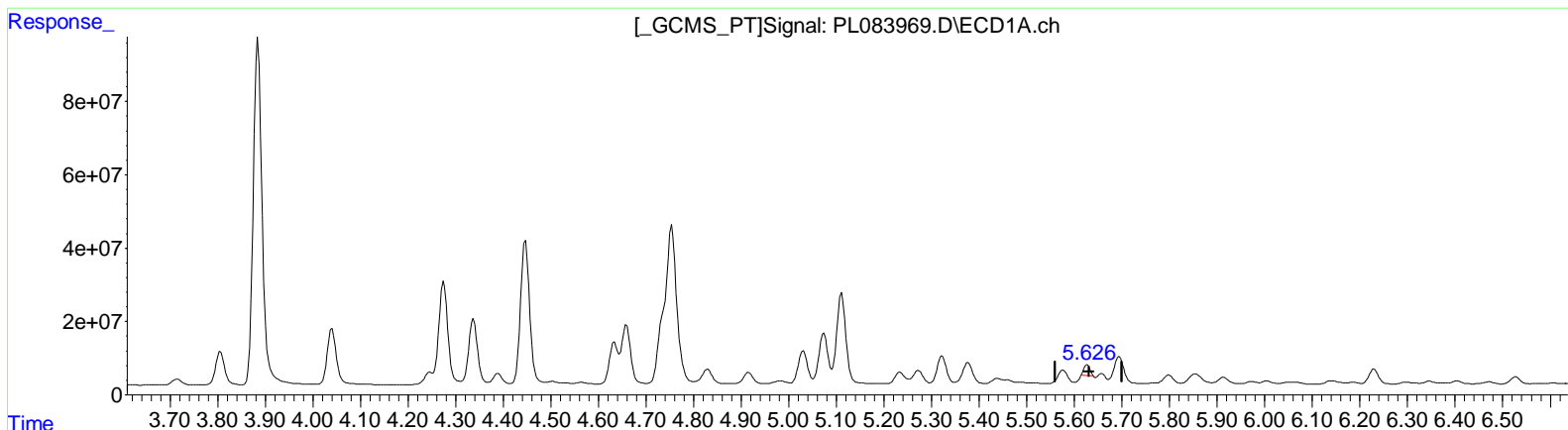
Instrument :
 ECD_L
ClientSampleId :
 A46W2DL

Manual IntegrationsAPPROVED

Reviewed By :Abdul Mirza 07/18/2023
 Supervised By :Ankita Jodhani 07/18/2023

Integration File signal 1: autoint1.e
 Integration File signal 2: autoint2.e
 Quant Time: Jul 18 00:45:15 2023
 Quant Method : Z:\pestpcbsrv\HPCHEM1\ECD_L\methods\PL071523CLP.M
 Quant Title : GC Extractables
 QLast Update : Sat Jul 15 05:26:27 2023
 Response via : Initial Calibration
 Integrator: ChemStation

Volume Inj. : 1 µl
 Signal #1 Phase : ZB-MR2 Signal #2 Phase: ZB-MR1
 Signal #1 Info : 30M x 0.32mm x0.2 Signal #2 Info : 30M x 0.32mm x 0.50µm



QEdit

(8) Heptachlor epoxide (B)
 5.627min 9.176 ng/ml
 response 25383536

(8) Heptachlor epoxide #2 (B)
 4.652min 14.540 ng/ml
 response 18200463

Data Path : Z:\pestpcbsrv\HPCHEM1\ECD_L\Data\PL071723\
 Data File : PL083969.D
 Signal(s) : Signal #1: ECD1A.ch Signal #2: ECD2B.ch
 Acq On : 17 Jul 2023 12:45
 Operator : ARVAJ
 Sample : 03501-05DL 5X
 Misc :
 ALS Vial : 10 Sample Multiplier: 1

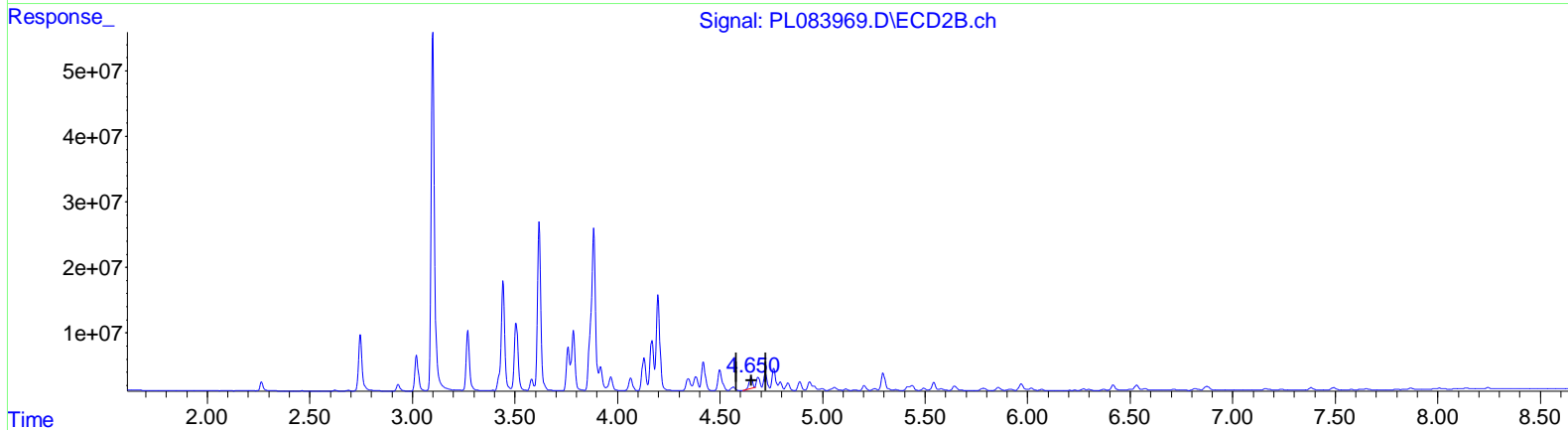
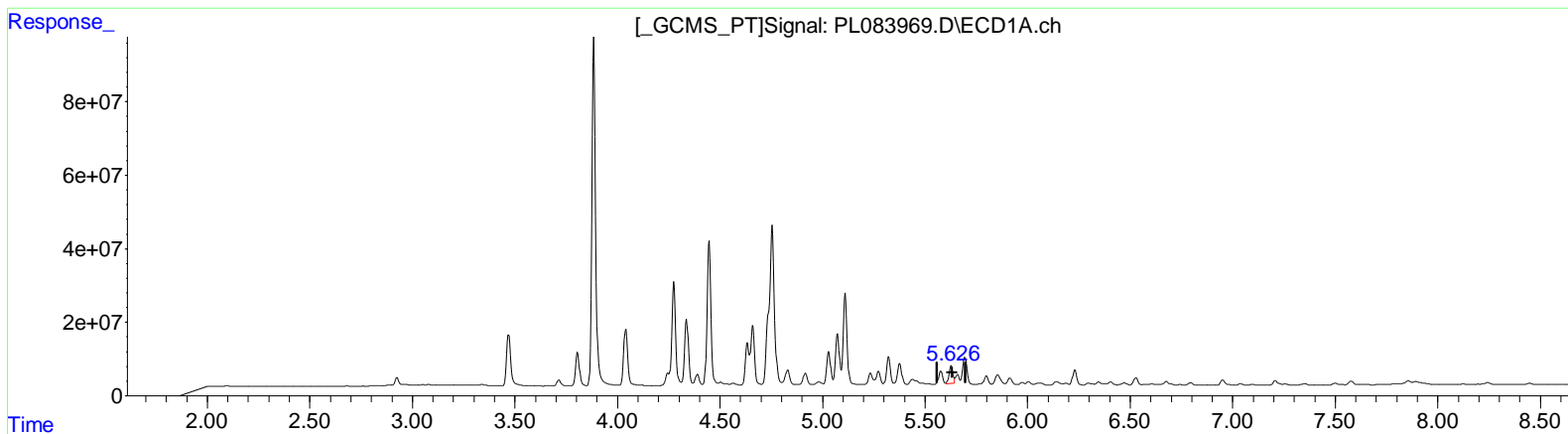
Instrument :
 ECD_L
ClientSampleId :
 A46W2DL

Manual Integrations APPROVED

Reviewed By : Abdul Mirza 07/18/2023
 Supervised By : Ankita Jodhani 07/18/2023

Integration File signal 1: autoint1.e
 Integration File signal 2: autoint2.e
 Quant Time: Jul 18 00:45:15 2023
 Quant Method : Z:\pestpcbsrv\HPCHEM1\ECD_L\methods\PL071523CLP.M
 Quant Title : GC Extractables
 QLast Update : Sat Jul 15 05:26:27 2023
 Response via : Initial Calibration
 Integrator: ChemStation

Volume Inj. : 1 µl
 Signal #1 Phase : ZB-MR2 Signal #2 Phase: ZB-MR1
 Signal #1 Info : 30M x 0.32mm x 0.2 Signal #2 Info : 30M x 0.32mm x 0.50µm



(8) Heptachlor epoxide (B)
 5.626min 23.442 ng/ml m
 response 64846869

(8) Heptachlor epoxide #2 (B)
 4.652min 14.540 ng/ml
 response 18200463

Data Path : Z:\pestpcbsrv\HPCHEM1\ECD_L\Data\PL071723\
 Data File : PL083969.D
 Signal(s) : Signal #1: ECD1A.ch Signal #2: ECD2B.ch
 Acq On : 17 Jul 2023 12:45
 Operator : ARVAJ
 Sample : 03501-05DL 5X
 Misc :
 ALS Vial : 10 Sample Multiplier: 1

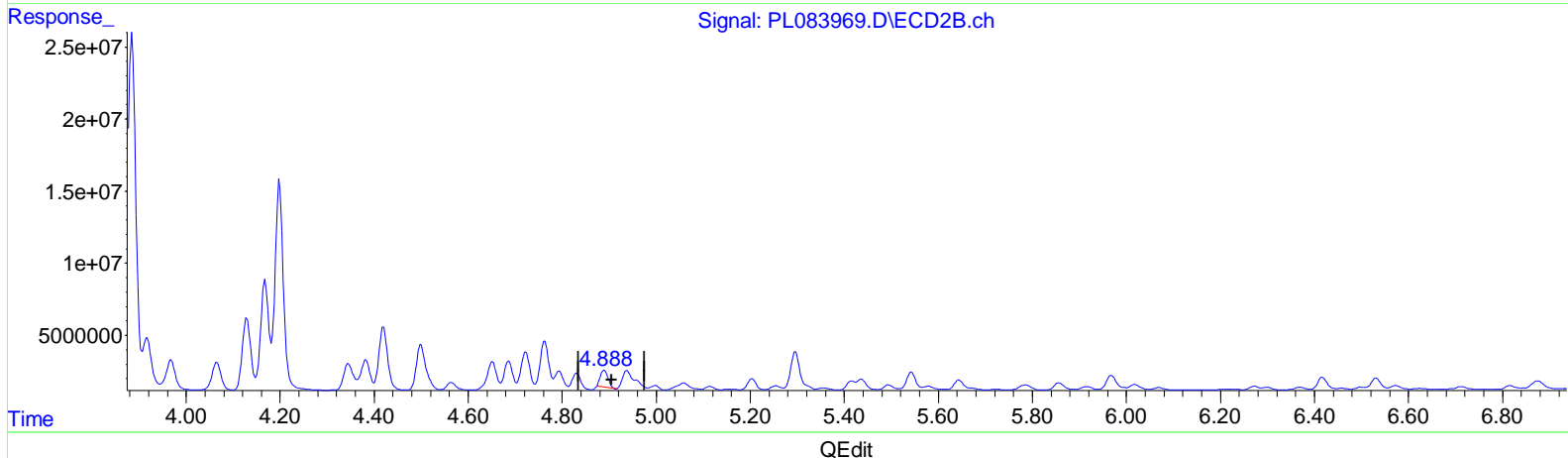
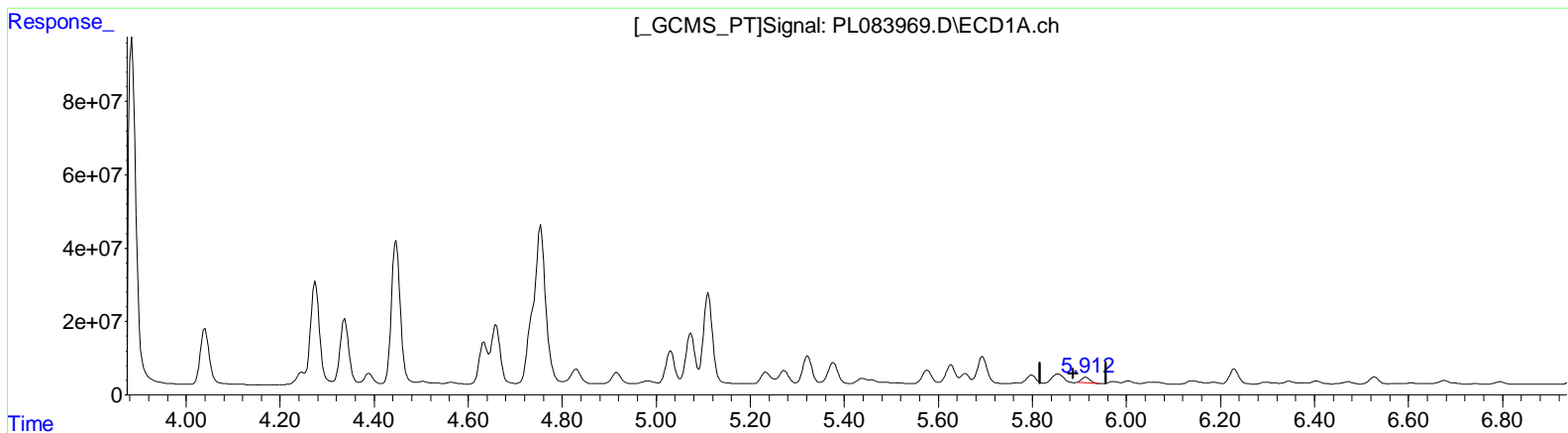
Instrument :
 ECD_L
ClientSampleId :
 A46W2DL

Manual Integrations APPROVED

Reviewed By : Abdul Mirza 07/18/2023
 Supervised By : Ankita Jodhani 07/18/2023

Integration File signal 1: autoint1.e
 Integration File signal 2: autoint2.e
 Quant Time: Jul 18 00:45:15 2023
 Quant Method : Z:\pestpcbsrv\HPCHEM1\ECD_L\methods\PL071523CLP.M
 Quant Title : GC Extractables
 QLast Update : Sat Jul 15 05:26:27 2023
 Response via : Initial Calibration
 Integrator: ChemStation

Volume Inj. : 1 µl
 Signal #1 Phase : ZB-MR2 Signal #2 Phase: ZB-MR1
 Signal #1 Info : 30M x 0.32mm x 0.2 Signal #2 Info : 30M x 0.32mm x 0.50µm



(10) trans-Chlordane (B)
 5.914min 6.841 ng/ml
 response 17890824

(10) trans-Chlordane #2 (B)
 4.890min 10.607 ng/ml
 response 13119672

Data Path : Z:\pestpcbsrv\HPCHEM1\ECD_L\Data\PL071723\
 Data File : PL083969.D
 Signal(s) : Signal #1: ECD1A.ch Signal #2: ECD2B.ch
 Acq On : 17 Jul 2023 12:45
 Operator : ARVAJ
 Sample : 03501-05DL 5X
 Misc :
 ALS Vial : 10 Sample Multiplier: 1

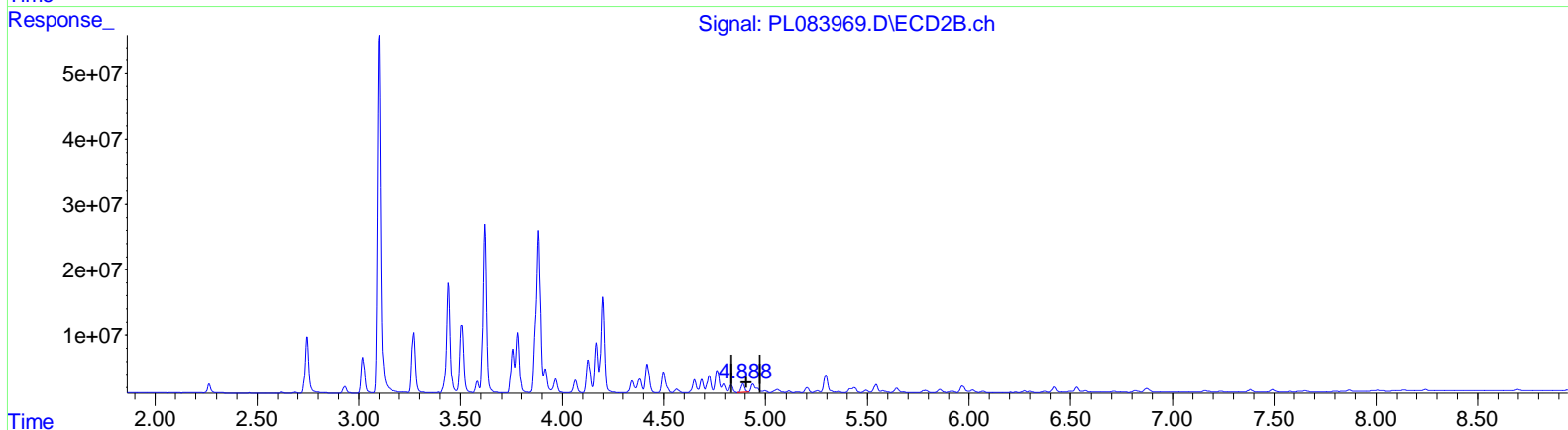
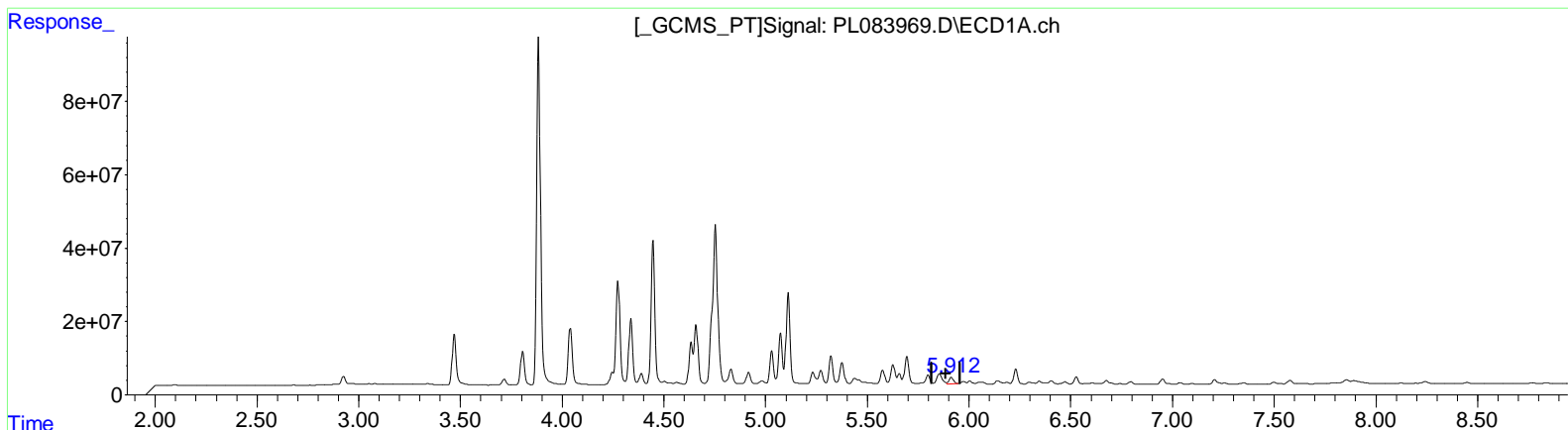
Instrument :
 ECD_L
ClientSampleId :
 A46W2DL

Manual IntegrationsAPPROVED

Reviewed By :Abdul Mirza 07/18/2023
 Supervised By :Ankita Jodhani 07/18/2023

Integration File signal 1: autoint1.e
 Integration File signal 2: autoint2.e
 Quant Time: Jul 18 00:45:15 2023
 Quant Method : Z:\pestpcbsrv\HPCHEM1\ECD_L\methods\PL071523CLP.M
 Quant Title : GC Extractables
 QLast Update : Sat Jul 15 05:26:27 2023
 Response via : Initial Calibration
 Integrator: ChemStation

Volume Inj. : 1 µl
 Signal #1 Phase : ZB-MR2 Signal #2 Phase: ZB-MR1
 Signal #1 Info : 30M x 0.32mm x0.2 Signal #2 Info : 30M x 0.32mm x 0.50µm



QEdit

(10) trans-Chlordane (B)
 5.912min 9.797 ng/ml m
 response 25619661

(10) trans-Chlordane #2 (B)
 4.888min 13.664 ng/ml m
 response 16900031

Data Path : Z:\pestpcbsrv\HPCHEM1\ECD_L\Data\PL071723\
 Data File : PL083969.D
 Signal (s) : Signal #1: ECD1A.ch Signal #2: ECD2B.ch
 Acq On : 17 Jul 2023 12:45
 Operator : ARVAJ
 Sample : 03501-05DL 5X
 Misc :
 ALS Vial : 10 Sample Multiplier: 1

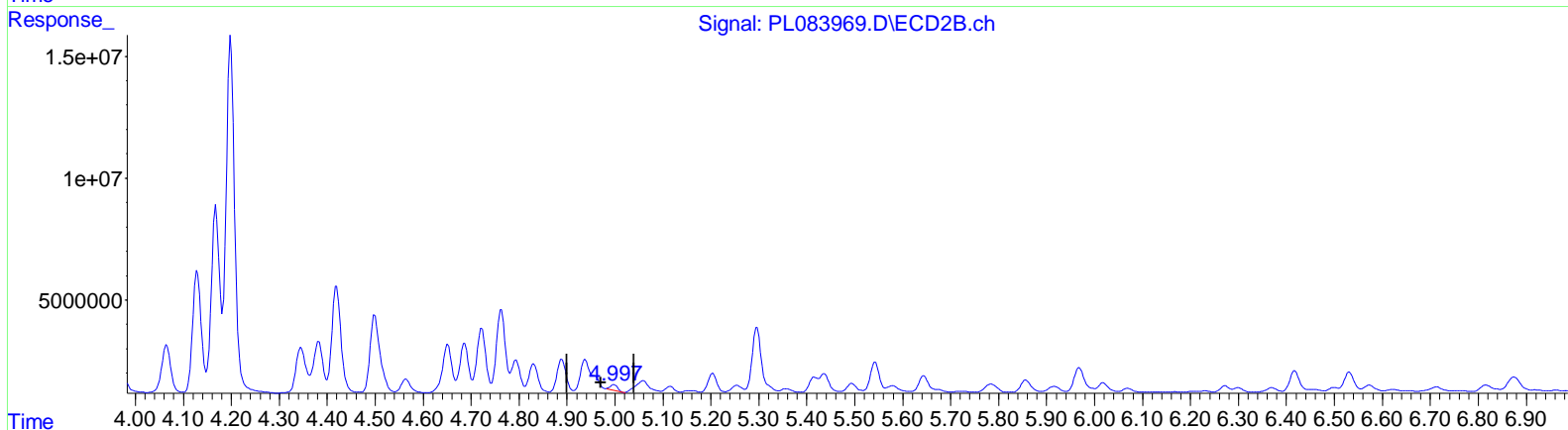
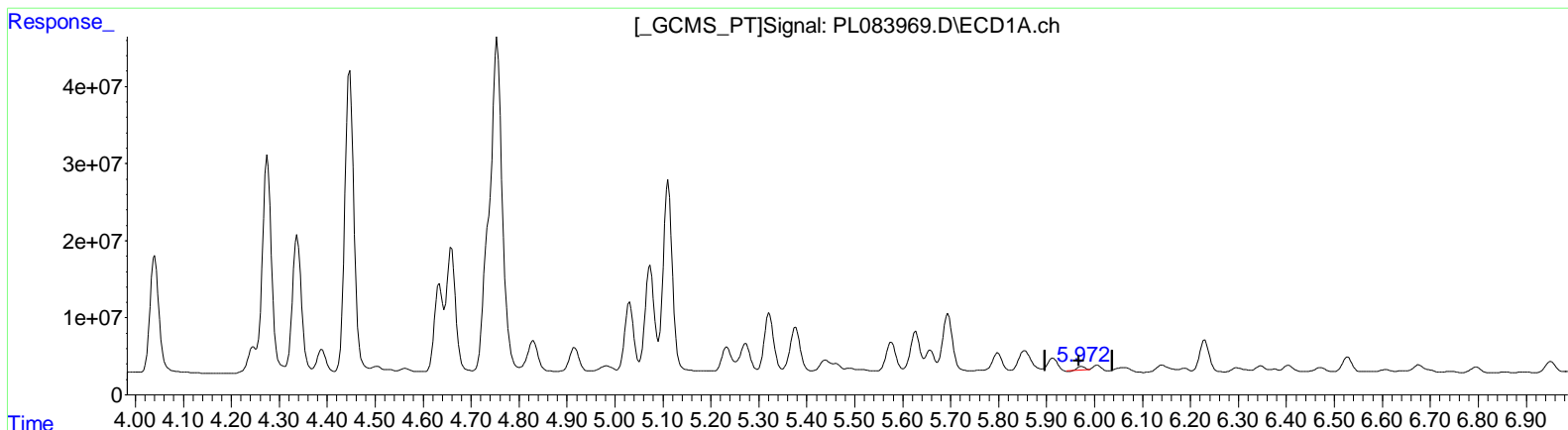
Instrument :
 ECD_L
ClientSampleId :
 A46W2DL

Manual Integrations APPROVED

Reviewed By : Abdul Mirza 07/18/2023
 Supervised By : Ankita Jodhani 07/18/2023

Integration File signal 1: autoint1.e
 Integration File signal 2: autoint2.e
 Quant Time: Jul 18 00:45:15 2023
 Quant Method : Z:\pestpcbsrv\HPCHEM1\ECD_L\methods\PL071523CLP.M
 Quant Title : GC Extractables
 QLast Update : Sat Jul 15 05:26:27 2023
 Response via : Initial Calibration
 Integrator: ChemStation

Volume Inj. : 1 µl
 Signal #1 Phase : ZB-MR2 Signal #2 Phase: ZB-MR1
 Signal #1 Info : 30M x 0.32mm x 0.2 Signal #2 Info : 30M x 0.32mm x 0.50µm



QEdit

(11) cis-Chlordane (B)
 5.973min 1.710 ng/ml
 response 4540123

(11) cis-Chlordane #2 (B)
 4.999min 1.858 ng/ml
 response 2379549

Data Path : Z:\pestpcbsrv\HPCHEM1\ECD_L\Data\PL071723\
 Data File : PL083969.D
 Signal(s) : Signal #1: ECD1A.ch Signal #2: ECD2B.ch
 Acq On : 17 Jul 2023 12:45
 Operator : ARVAJ
 Sample : 03501-05DL 5X
 Misc :
 ALS Vial : 10 Sample Multiplier: 1

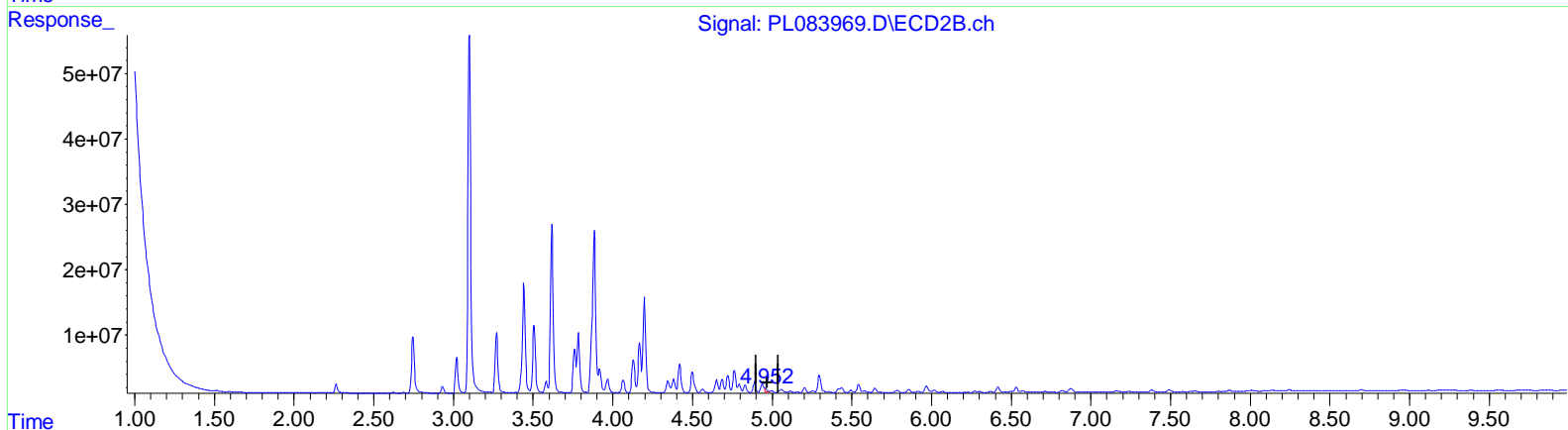
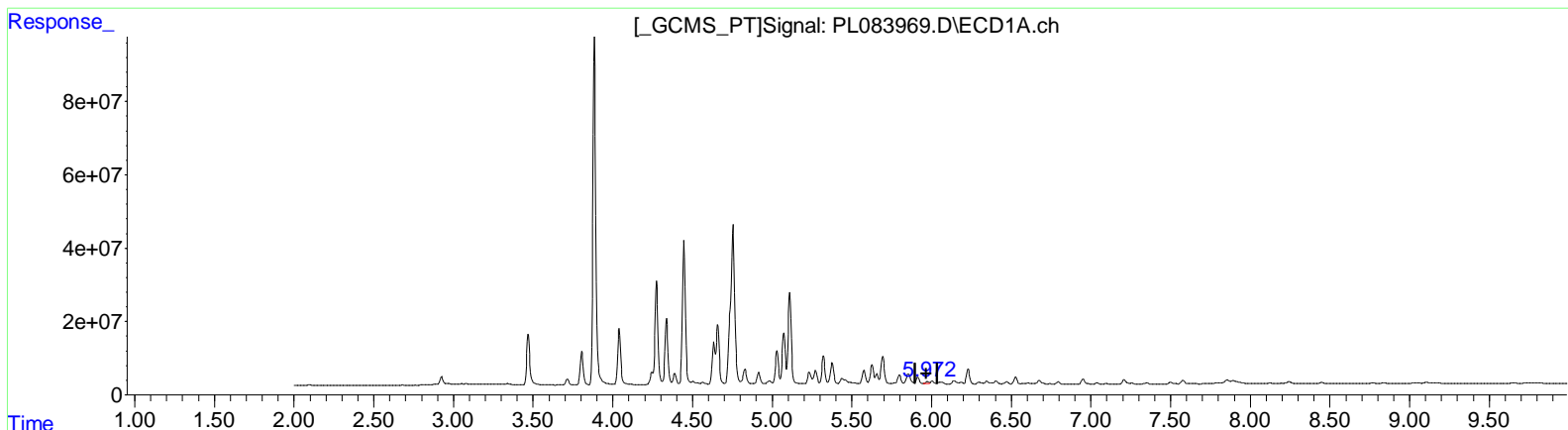
Instrument :
 ECD_L
ClientSampleId :
 A46W2DL

Manual Integrations APPROVED

Reviewed By : Abdul Mirza 07/18/2023
 Supervised By : Ankita Jodhani 07/18/2023

Integration File signal 1: autoint1.e
 Integration File signal 2: autoint2.e
 Quant Time: Jul 18 00:45:15 2023
 Quant Method : Z:\pestpcbsrv\HPCHEM1\ECD_L\methods\PL071523CLP.M
 Quant Title : GC Extractables
 QLast Update : Sat Jul 15 05:26:27 2023
 Response via : Initial Calibration
 Integrator: ChemStation

Volume Inj. : 1 µl
 Signal #1 Phase : ZB-MR2 Signal #2 Phase: ZB-MR1
 Signal #1 Info : 30M x 0.32mm x 0.2 Signal #2 Info : 30M x 0.32mm x 0.50µm



(11) cis-Chlordane (B)
 5.972min 3.286 ng/ml m
 response 8725727

(11) cis-Chlordane #2 (B)
 4.952min 4.968 ng/ml m
 response 6363558

Data Path : Z:\pestpcbsrv\HPCHEM1\ECD_L\Data\PL071723\
 Data File : PL083969.D
 Signal(s) : Signal #1: ECD1A.ch Signal #2: ECD2B.ch
 Acq On : 17 Jul 2023 12:45
 Operator : ARVAJ
 Sample : 03501-05DL 5X
 Misc :
 ALS Vial : 10 Sample Multiplier: 1

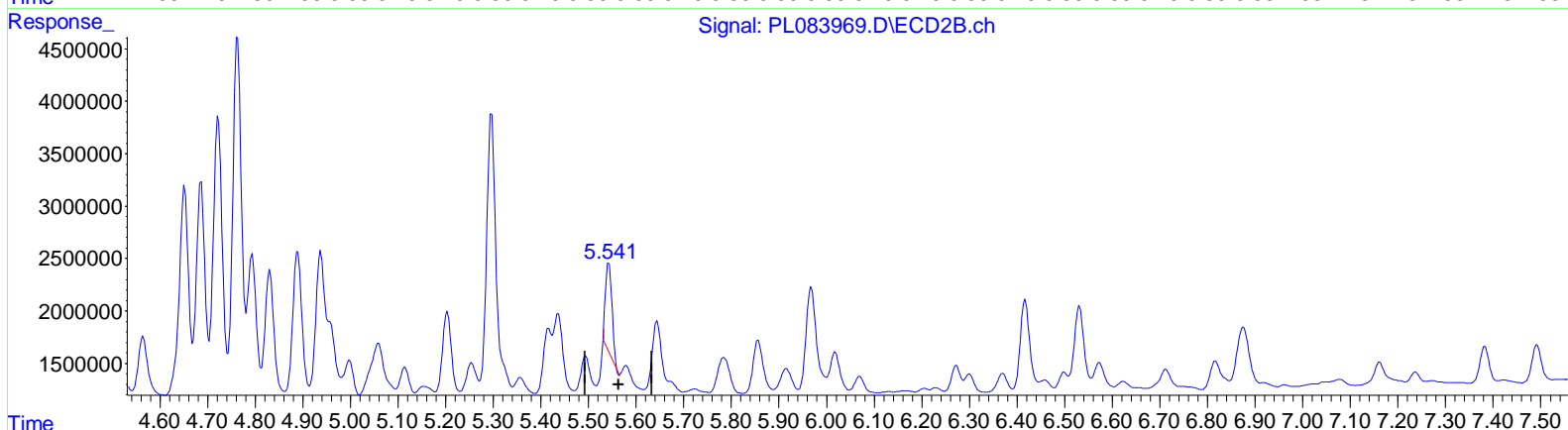
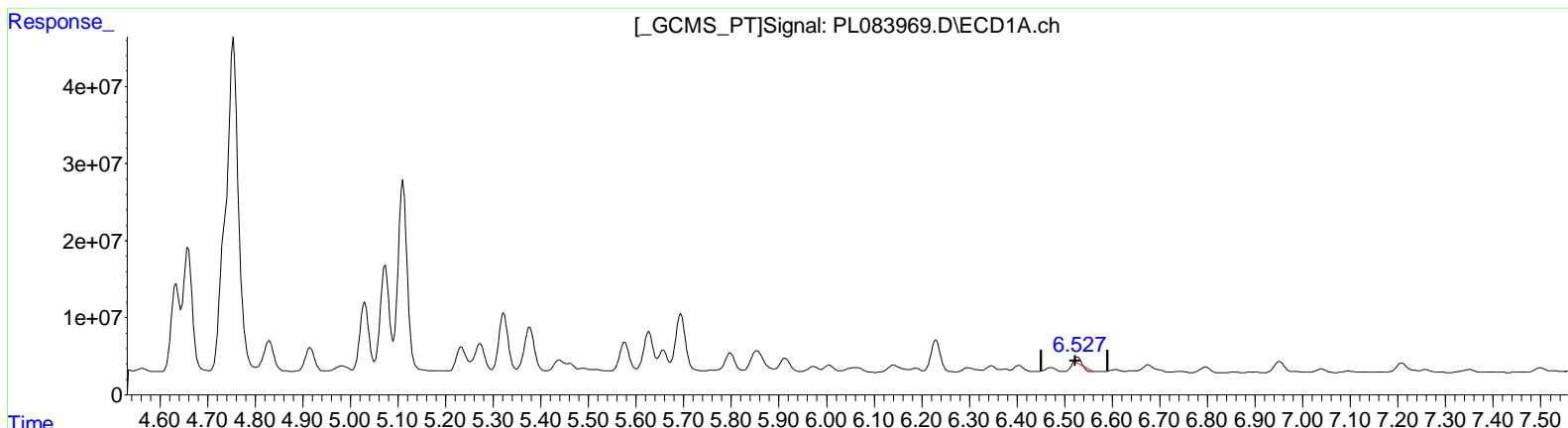
Instrument :
 ECD_L
 ClientSampleId :
 A46W2DL

Manual Integrations APPROVED

Reviewed By : Abdul Mirza 07/18/2023
 Supervised By : Ankita Jodhani 07/18/2023

Integration File signal 1: autoint1.e
 Integration File signal 2: autoint2.e
 Quant Time: Jul 18 00:45:15 2023
 Quant Method : Z:\pestpcbsrv\HPCHEM1\ECD_L\methods\PL071523CLP.M
 Quant Title : GC Extractables
 QLast Update : Sat Jul 15 05:26:27 2023
 Response via : Initial Calibration
 Integrator: ChemStation

Volume Inj. : 1 µl
 Signal #1 Phase : ZB-MR2 Signal #2 Phase: ZB-MR1
 Signal #1 Info : 30M x 0.32mm x 0.2 Signal #2 Info : 30M x 0.32mm x 0.50µm



QEdit

(14) Endrin (MA)
 6.528min 2.863 ng/ml
 response 5550831

(14) Endrin #2 (MA)
 5.543min 7.177 ng/ml
 response 8174476

Data Path : Z:\pestpcbsrv\HPCHEM1\ECD_L\Data\PL071723\
 Data File : PL083969.D
 Signal(s) : Signal #1: ECD1A.ch Signal #2: ECD2B.ch
 Acq On : 17 Jul 2023 12:45
 Operator : ARVAJ
 Sample : 03501-05DL 5X
 Misc :
 ALS Vial : 10 Sample Multiplier: 1

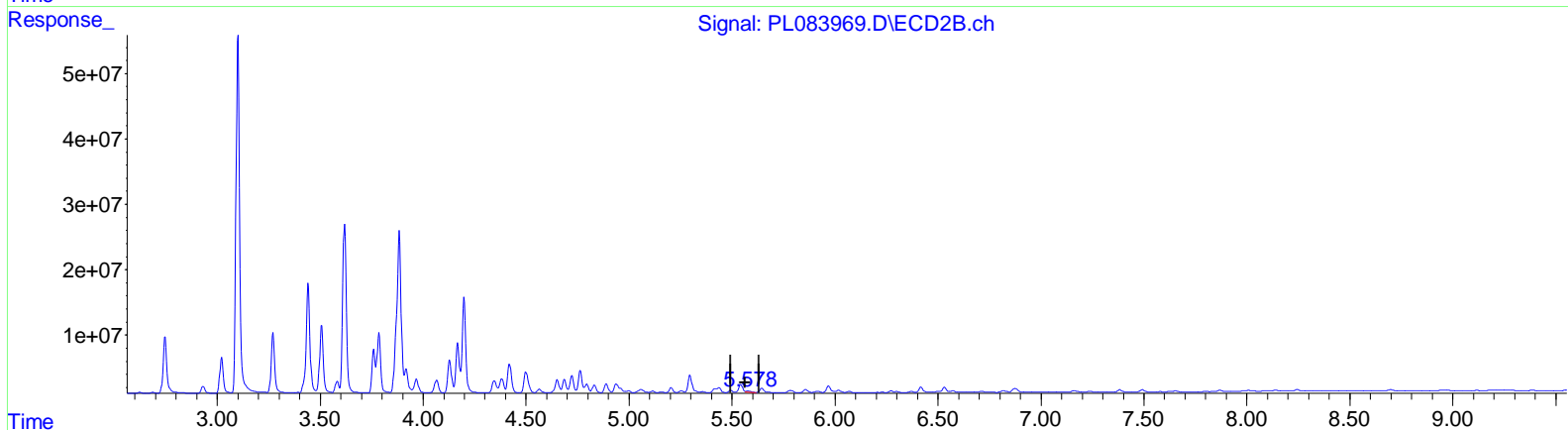
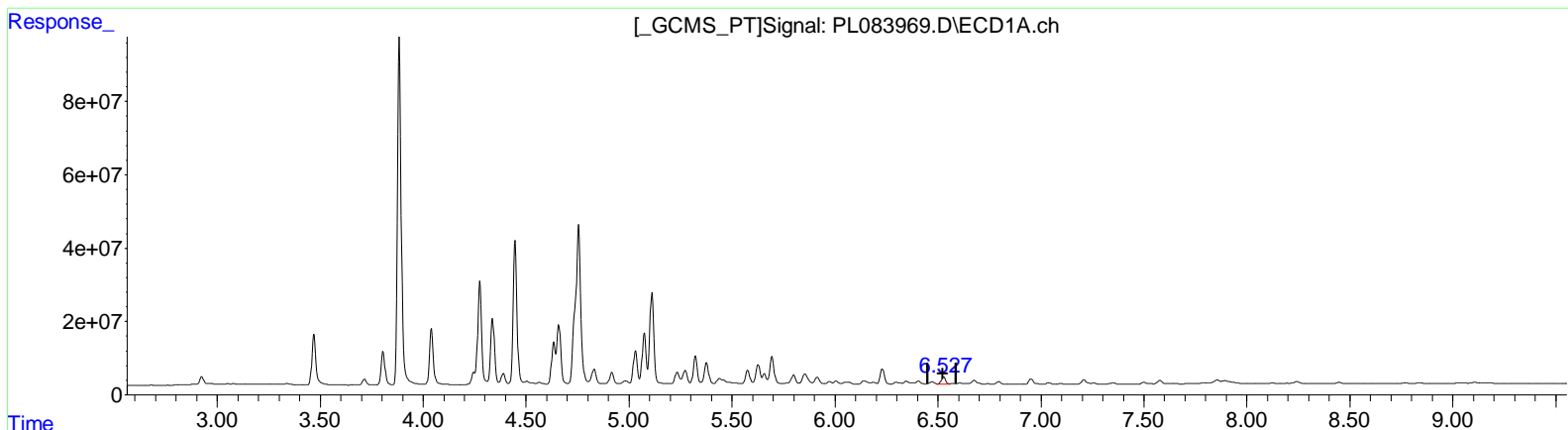
Instrument :
 ECD_L
ClientSampleId :
 A46W2DL

Manual IntegrationsAPPROVED

Reviewed By :Abdul Mirza 07/18/2023
 Supervised By :Ankita Jodhani 07/18/2023

Integration File signal 1: autoint1.e
 Integration File signal 2: autoint2.e
 Quant Time: Jul 18 00:45:15 2023
 Quant Method : Z:\pestpcbsrv\HPCHEM1\ECD_L\methods\PL071523CLP.M
 Quant Title : GC Extractables
 QLast Update : Sat Jul 15 05:26:27 2023
 Response via : Initial Calibration
 Integrator: ChemStation

Volume Inj. : 1 µl
 Signal #1 Phase : ZB-MR2 Signal #2 Phase: ZB-MR1
 Signal #1 Info : 30M x 0.32mm x0.2 Signal #2 Info : 30M x 0.32mm x 0.50µm



(14) Endrin (MA)
 6.527min 14.865 ng/ml m
 response 28816162

(14) Endrin #2 (MA)
 5.578min 2.633 ng/ml m
 response 2999331

Data Path : Z:\pestpcbsrv\HPCHEM1\ECD_L\Data\PL071723\
 Data File : PL083969.D
 Signal(s) : Signal #1: ECD1A.ch Signal #2: ECD2B.ch
 Acq On : 17 Jul 2023 12:45
 Operator : ARVAJ
 Sample : 03501-05DL 5X
 Misc :
 ALS Vial : 10 Sample Multiplier: 1

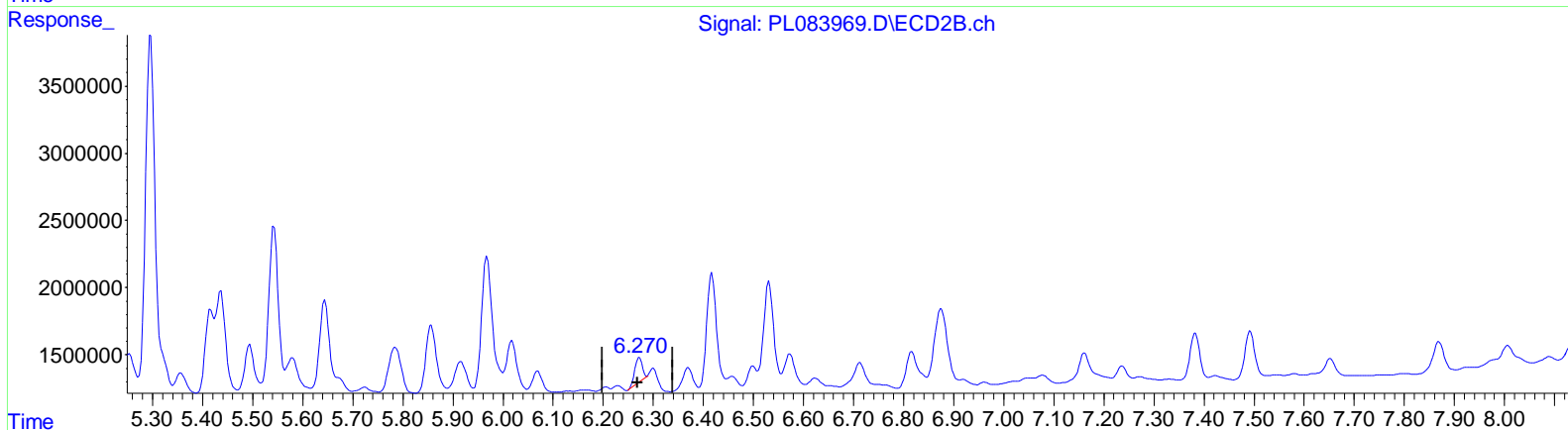
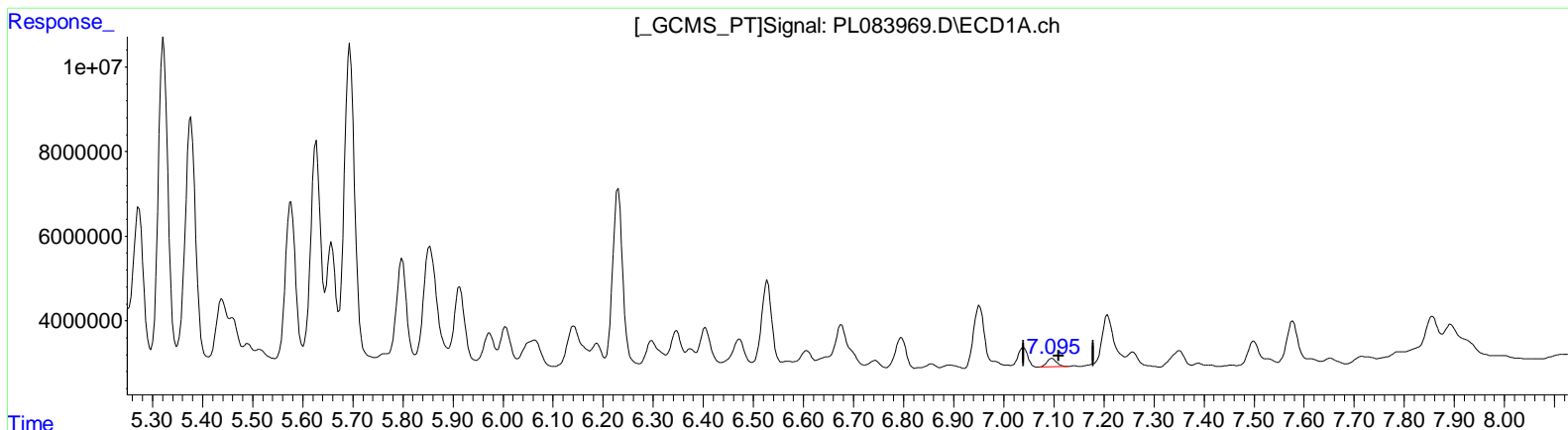
Instrument :
 ECD_L
 ClientSampleId :
 A46W2DL

Manual Integrations APPROVED

Reviewed By : Abdul Mirza 07/18/2023
 Supervised By : Ankita Jodhani 07/18/2023

Integration File signal 1: autoint1.e
 Integration File signal 2: autoint2.e
 Quant Time: Jul 18 00:45:15 2023
 Quant Method : Z:\pestpcbsrv\HPCHEM1\ECD_L\methods\PL071523CLP.M
 Quant Title : GC Extractables
 QLast Update : Sat Jul 15 05:26:27 2023
 Response via : Initial Calibration
 Integrator: ChemStation

Volume Inj. : 1 µl
 Signal #1 Phase : ZB-MR2 Signal #2 Phase: ZB-MR1
 Signal #1 Info : 30M x 0.32mm x 0.2 Signal #2 Info : 30M x 0.32mm x 0.50µm



(19) Endosulfan Sulfate (B)
 7.097min 1.465 ng/ml
 response 2570142

(19) Endosulfan Sulfate #2 (B)
 6.273min 1.724 ng/ml
 response 1901728

Data Path : Z:\pestpcbsrv\HPCHEM1\ECD_L\Data\PL071723\
 Data File : PL083969.D
 Signal (s) : Signal #1: ECD1A.ch Signal #2: ECD2B.ch
 Acq On : 17 Jul 2023 12:45
 Operator : ARVAJ
 Sample : 03501-05DL 5X
 Misc :
 ALS Vial : 10 Sample Multiplier: 1

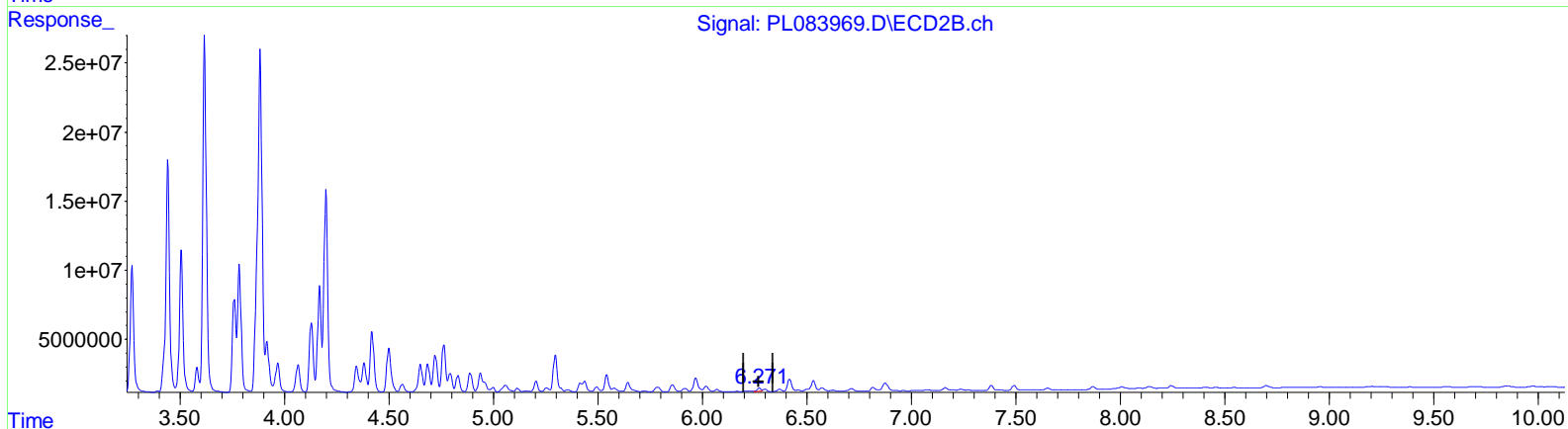
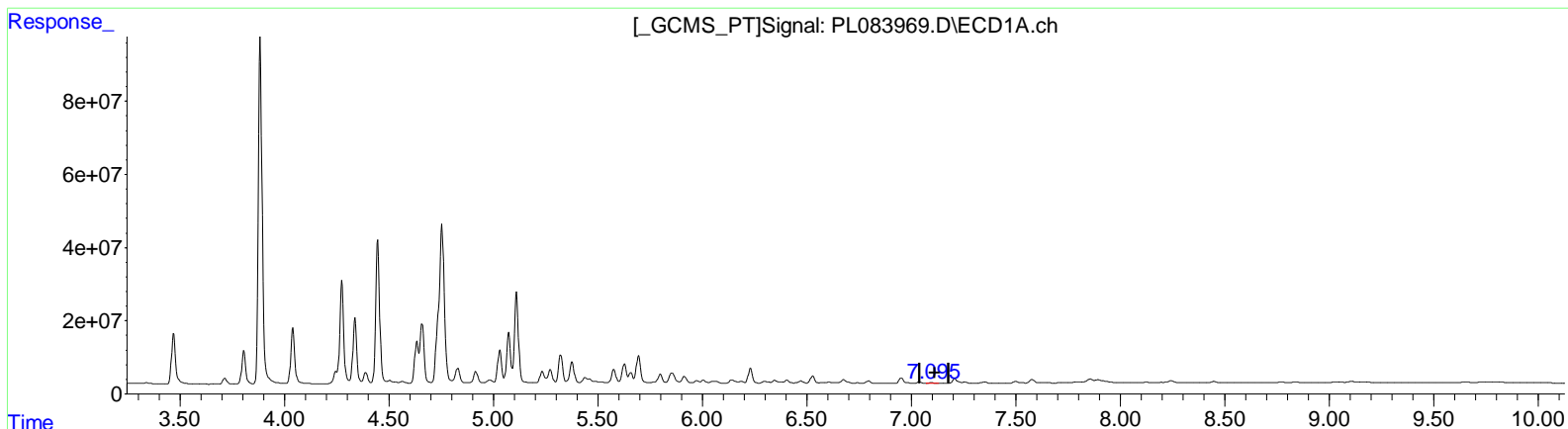
Instrument :
 ECD_L
ClientSampleId :
 A46W2DL

Manual IntegrationsAPPROVED

Reviewed By :Abdul Mirza 07/18/2023
 Supervised By :Ankita Jodhani 07/18/2023

Integration File signal 1: autoint1.e
 Integration File signal 2: autoint2.e
 Quant Time: Jul 18 00:45:15 2023
 Quant Method : Z:\pestpcbsrv\HPCHEM1\ECD_L\methods\PL071523CLP.M
 Quant Title : GC Extractables
 QLast Update : Sat Jul 15 05:26:27 2023
 Response via : Initial Calibration
 Integrator: ChemStation

Volume Inj. : 1 µl
 Signal #1 Phase : ZB-MR2 Signal #2 Phase: ZB-MR1
 Signal #1 Info : 30M x 0.32mm x0.2 Signal #2 Info : 30M x 0.32mm x 0.50µm



(19) Endosulfan Sulfate (B)
 7.097min 1.465 ng/ml
 response 2570142

(19) Endosulfan Sulfate #2 (B)
 6.271min 2.640 ng/ml m
 response 2912020

Data Path : Z:\pestpcbsrv\HPCHEM1\ECD_L\Data\PL071723\
 Data File : PL083969.D
 Signal(s) : Signal #1: ECD1A.ch Signal #2: ECD2B.ch
 Acq On : 17 Jul 2023 12:45
 Operator : ARVAJ
 Sample : 03501-05DL 5X
 Misc :
 ALS Vial : 10 Sample Multiplier: 1

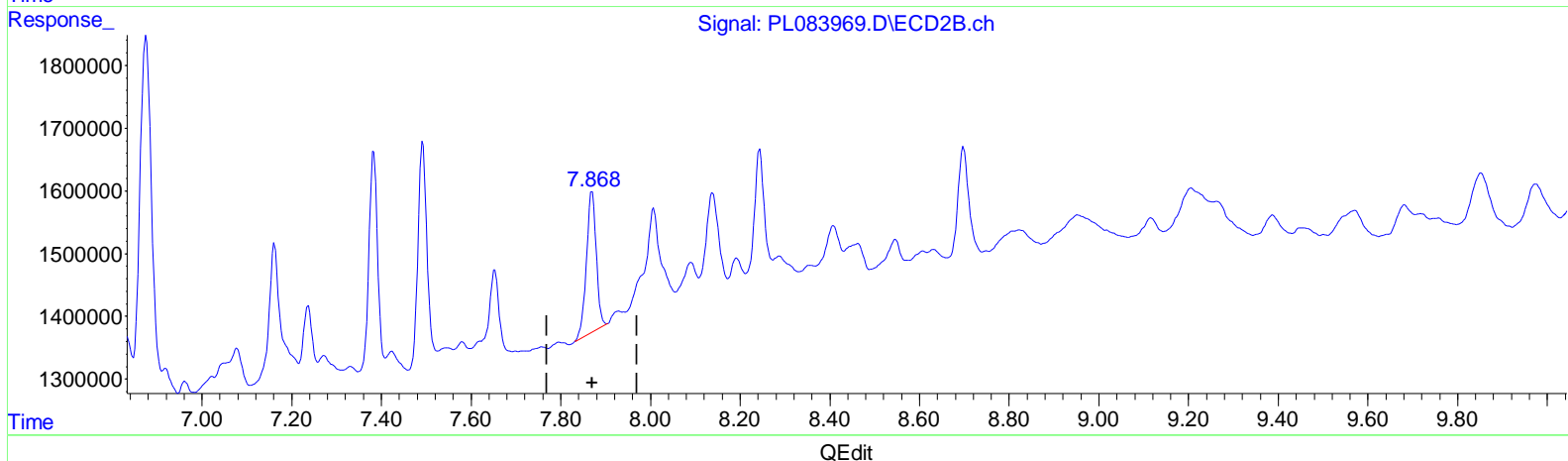
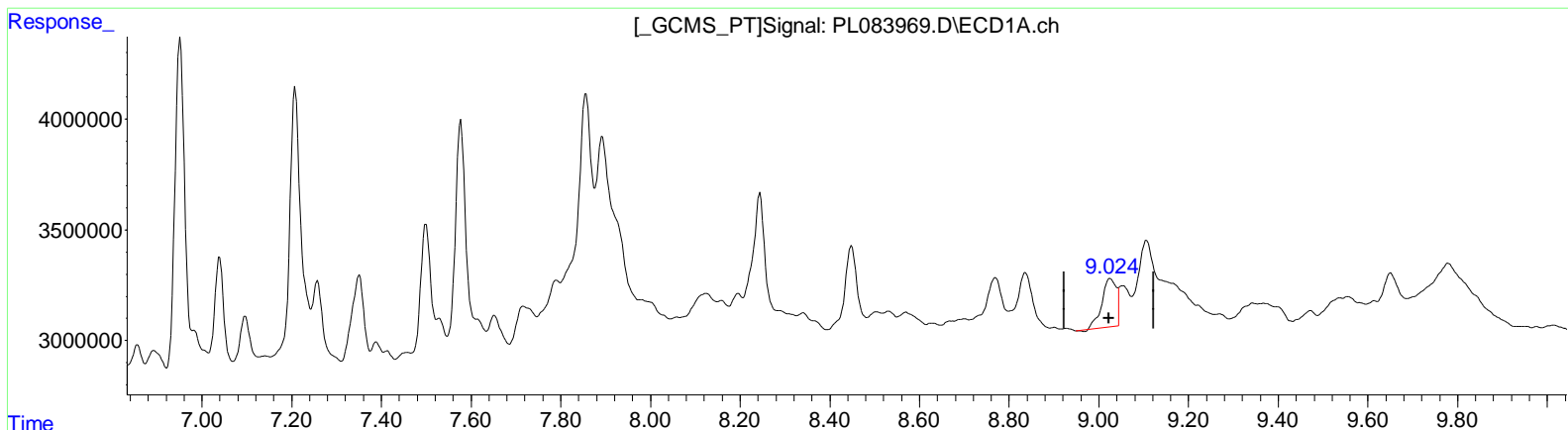
Instrument :
 ECD_L
ClientSampleId :
 A46W2DL

Manual IntegrationsAPPROVED

Reviewed By :Abdul Mirza 07/18/2023
 Supervised By :Ankita Jodhani 07/18/2023

Integration File signal 1: autoint1.e
 Integration File signal 2: autoint2.e
 Quant Time: Jul 18 00:45:15 2023
 Quant Method : Z:\pestpcbsrv\HPCHEM1\ECD_L\methods\PL071523CLP.M
 Quant Title : GC Extractables
 QLast Update : Sat Jul 15 05:26:27 2023
 Response via : Initial Calibration
 Integrator: ChemStation

Volume Inj. : 1 µl
 Signal #1 Phase : ZB-MR2 Signal #2 Phase: ZB-MR1
 Signal #1 Info : 30M x 0.32mm x0.2 Signal #2 Info : 30M x 0.32mm x 0.50µm



(27) Decachlorobiphenyl (SA)
 9.026min 3.579 ng/ml
 response 4704109

(27) Decachlorobiphenyl #2 (SA)
 7.870min 3.073 ng/ml
 response 3401247

Data Path : Z:\pestpcbsrv\HPCHEM1\ECD_L\Data\PL071723\
 Data File : PL083969.D
 Signal (s) : Signal #1: ECD1A.ch Signal #2: ECD2B.ch
 Acq On : 17 Jul 2023 12:45
 Operator : ARVAJ
 Sample : 03501-05DL 5X
 Misc :
 ALS Vial : 10 Sample Multiplier: 1

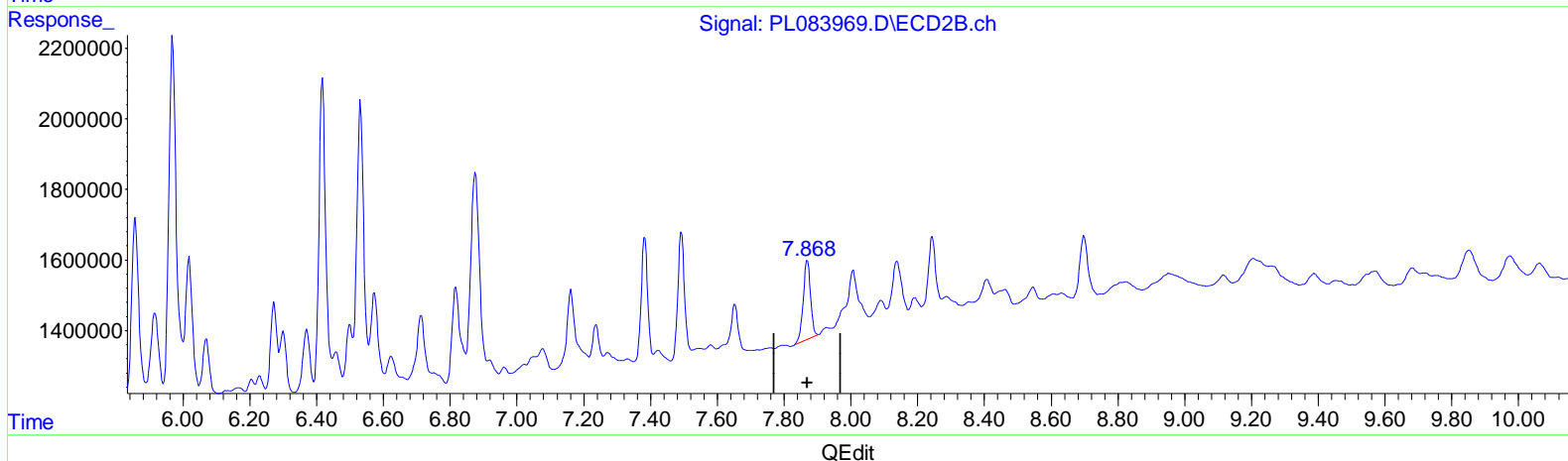
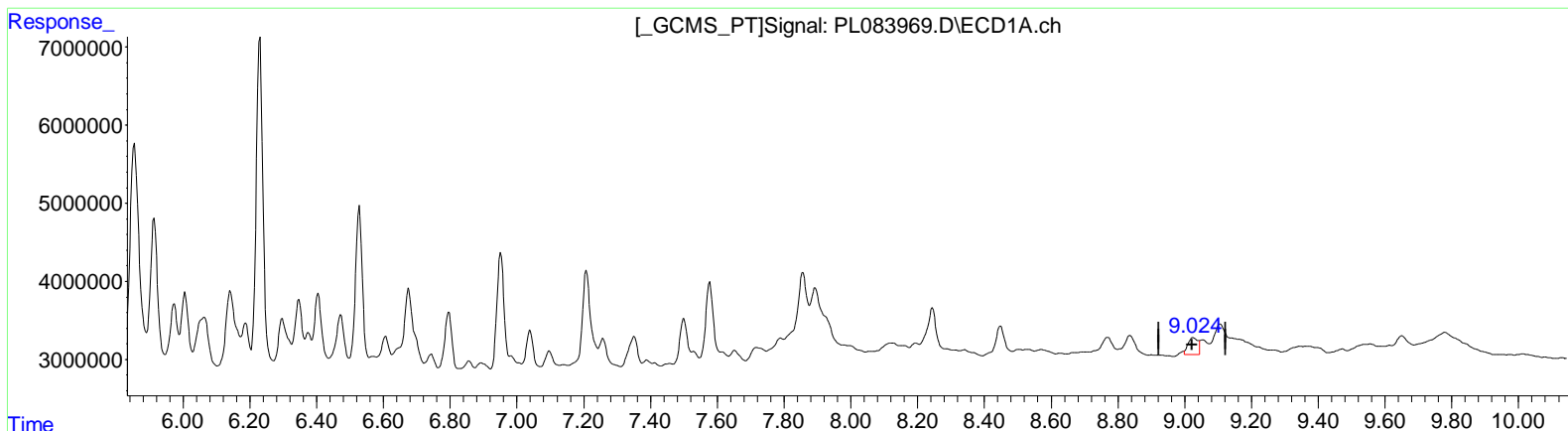
Instrument :
 ECD_L
ClientSampleId :
 A46W2DL

Manual Integrations APPROVED

Reviewed By : Abdul Mirza 07/18/2023
 Supervised By : Ankita Jodhani 07/18/2023

Integration File signal 1: autoint1.e
 Integration File signal 2: autoint2.e
 Quant Time: Jul 18 00:45:15 2023
 Quant Method : Z:\pestpcbsrv\HPCHEM1\ECD_L\methods\PL071523CLP.M
 Quant Title : GC Extractables
 QLast Update : Sat Jul 15 05:26:27 2023
 Response via : Initial Calibration
 Integrator: ChemStation

Volume Inj. : 1 µl
 Signal #1 Phase : ZB-MR2 Signal #2 Phase: ZB-MR1
 Signal #1 Info : 30M x 0.32mm x 0.2 Signal #2 Info : 30M x 0.32mm x 0.50µm



(27) Decachlorobiphenyl (SA)
 9.024min 3.586 ng/ml m
 response 4713802

(27) Decachlorobiphenyl #2 (SA)
 7.870min 3.073 ng/ml
 response 3401247

(+) = Expected Retention Time