

Data Path : Z:\pestpcbsrv\HPCHEM1\ECD\_L\Data\PL071818\  
 Data File : PL038222.D  
 Signal(s) : Signal #1: ECD1A.ch Signal #2: ECD2B.ch  
 Acq On : 18 Jul 2018 19:30  
 Operator : AJ\SJ  
 Sample : PSTDCCC050  
 Misc :  
 ALS Vial : 4 Sample Multiplier: 1

Instrument :  
 ECD\_L  
 ClientSampled :

Integration File signal 1: autoint1.e  
 Integration File signal 2: autoint2.e  
 Quant Time: Jul 19 03:52:44 2018  
 Quant Method : Z:\PESTPCBSRV\HPCHEM1\ECD\_L\methods\PL071318.M  
 Quant Title : GC Extractables  
 QLast Update : Sat Jul 14 00:12:12 2018  
 Response via : Initial Calibration  
 Integrator: ChemStation

Volume Inj. : 2 µl  
 Signal #1 Phase : ZB-MR2 Signal #2 Phase: ZB-MR2  
 Signal #1 Info : 30M x 0.32mm x0.5 Signal #2 Info : 30M x 0.32mm x0.25µm

	Compound	RT#1	RT#2	Resp#1	Resp#2	ng/ml	ng/ml
-----							
System Monitoring Compounds							
1)	SA Tetrachlo...	3.329	3.930	353.1E6	141.1E6	47.417	53.741
28)	SA Decachlor...	7.999	8.939	327.1E6	116.1E6	43.118	47.516
Target Compounds							
2)	A alpha-BHC	3.759	4.309	571.8E6	210.7E6	48.391	54.453
3)	MA gamma-BHC...	4.035	4.589	518.0E6	188.8E6	49.410	52.279
4)	MA Heptachlor	4.318	5.100	505.3E6	176.2E6	47.504	55.134
5)	MB Aldrin	4.557	5.402	514.7E6	167.8E6	49.174	54.362
6)	B beta-BHC	4.289	4.751	230.1E6	85072956	48.747	56.084
7)	B delta-BHC	4.483	4.965	536.3E6	183.0E6	49.408	55.173
8)	Heptachlo...	4.995	5.781	465.8E6	159.8E6	49.405	56.240
9)	A Endosulfan I	5.325	6.135	427.1E6	131.8E6	49.381	51.242
10)	B gamma-Chl...	5.217	6.014	488.1E6	150.5E6	49.386	51.918
11)	B alpha-Chl...	5.274	6.088	465.0E6	147.6E6	49.128	51.509
12)	B 4,4'-DDE	5.443	6.244	478.8E6	134.1E6	49.935	50.164
13)	MA Dieldrin	5.565	6.388	464.0E6	139.6E6	48.280	51.277
14)	MA Endrin	5.818	6.603	411.7E6	124.4E6	47.389	52.096
15)	B Endosulfa...	6.093	6.806	395.3E6	118.9E6	49.846	49.525
16)	A 4,4'-DDD	5.954	6.726	380.6E6	110.9E6	51.883	51.817
17)	MA 4,4'-DDT	6.187	7.024	319.2E6	94355168	42.972	44.256
18)	B Endrin al...	6.261	6.929	299.5E6	99235114	47.028	50.854
19)	B Endosulfa...	6.472	7.151	357.4E6	111.4E6	47.317	51.085
20)	A Methoxychlor	6.736	7.480	166.3E6	53030192	43.231	46.572
21)	B Endrin ke...	6.955	7.615	376.5E6	117.7E6	47.983	49.379
23)	Chlordane-1	4.134	4.965	7468180	183.0E6	21.569	1579.034 #
24)	Chlordane-2	0.000	5.402	0	167.8E6	N.D.	1401.032 #
25)	Chlordane-3	5.217	6.014	488.1E6	150.5E6	419.600	369.016
26)	Chlordane-4	5.274	6.088	465.0E6	147.6E6	442.312	300.492 #
27)	Chlordane-5	5.818	6.929	411.7E6	99235114	2571.204	1107.788 #

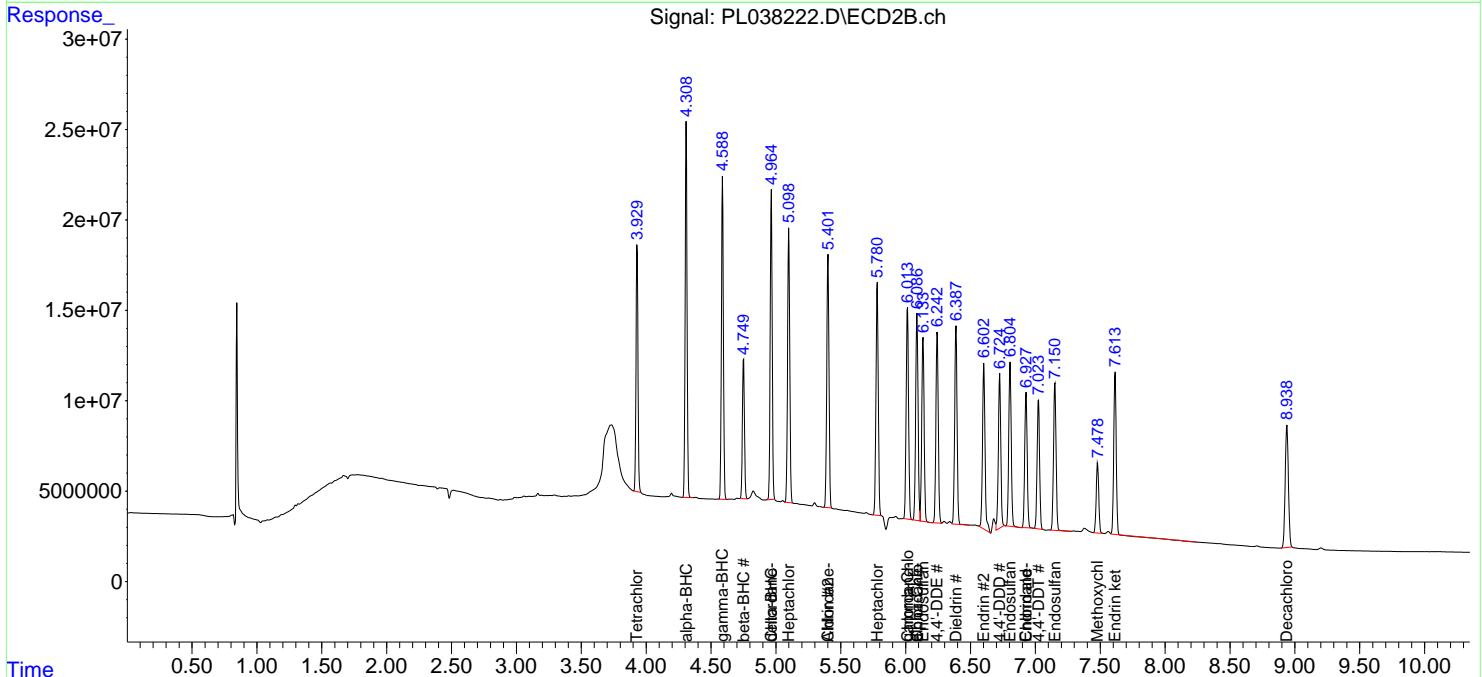
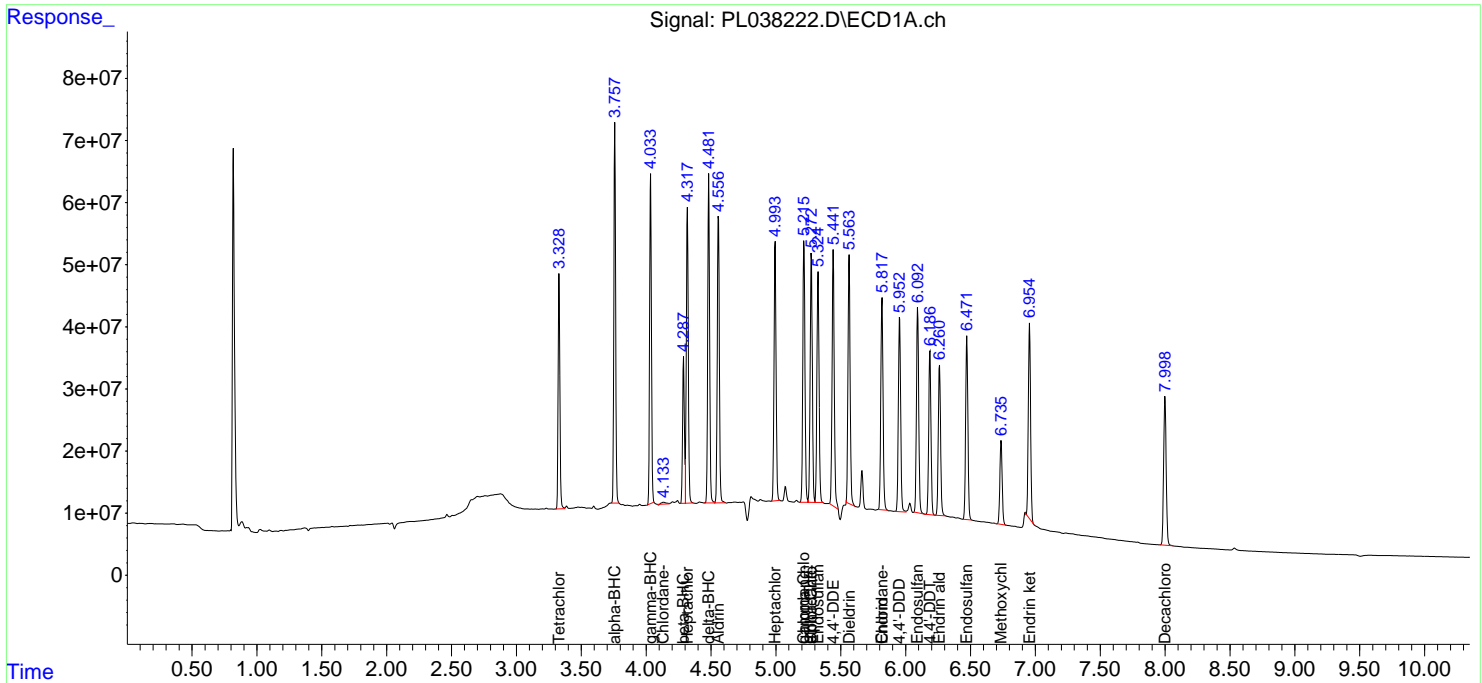
(f)=RT Delta > 1/2 Window (#)=Amounts differ by > 25% (m)=manual int.

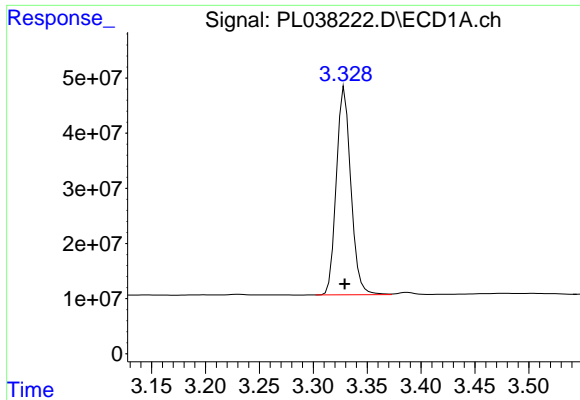
Data Path : Z:\pestpcbsrv\HPCHEM1\ECD\_L\Data\PL071818\  
 Data File : PL038222.D  
 Signal(s) : Signal #1: ECD1A.ch Signal #2: ECD2B.ch  
 Acq On : 18 Jul 2018 19:30  
 Operator : AJ\SJ  
 Sample : PSTDCCC050  
 Misc :  
 ALS Vial : 4 Sample Multiplier: 1

Instrument :  
 ECD\_L  
 ClientSampled :

Integration File signal 1: autoint1.e  
 Integration File signal 2: autoint2.e  
 Quant Time: Jul 19 03:52:44 2018  
 Quant Method : Z:\PESTPCBSRV\HPCHEM1\ECD\_L\methods\PL071318.M  
 Quant Title : GC Extractables  
 QLast Update : Sat Jul 14 00:12:12 2018  
 Response via : Initial Calibration  
 Integrator: ChemStation

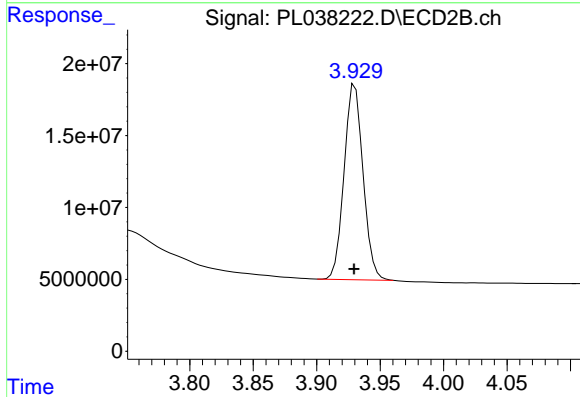
Volume Inj. : 2 µl  
 Signal #1 Phase : ZB-MR1 Signal #2 Phase: ZB-MR2  
 Signal #1 Info : 30M x 0.32mm x0.5 Signal #2 Info : 30M x 0.32mm x0.25µm



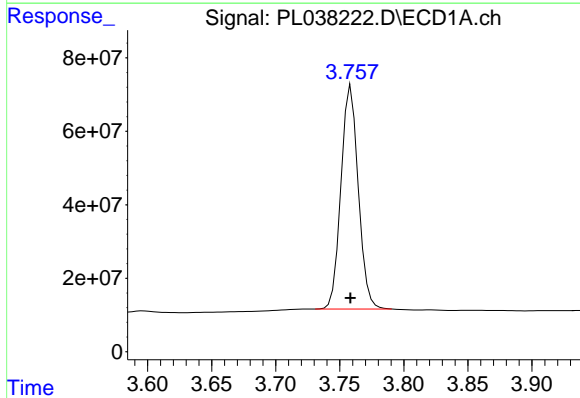


#1 Tetrachloro-m-xylene  
 R.T.: 3.329 min  
 Delta R.T.: 0.000 min  
 Response: 353085985  
 Conc: 47.42 ng/ml

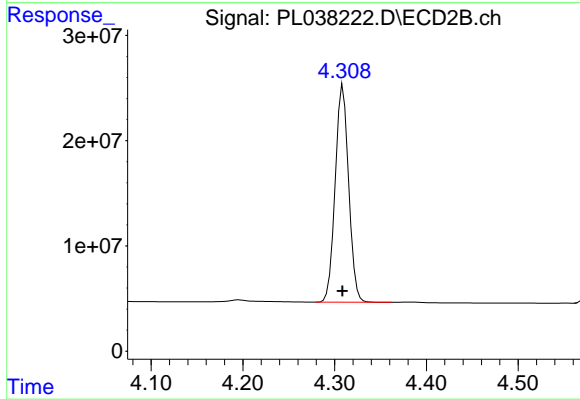
Instrument :  
 ECD\_L  
 ClientSampleId :



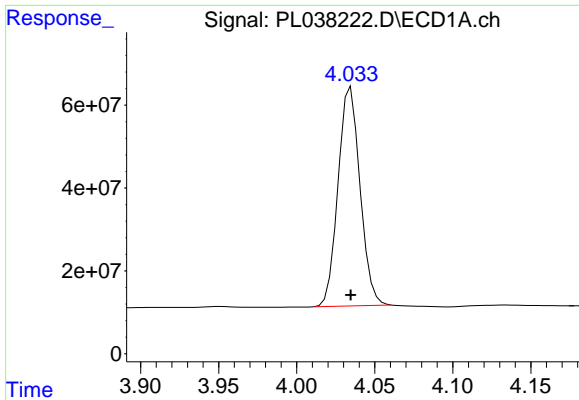
#1 Tetrachloro-m-xylene  
 R.T.: 3.930 min  
 Delta R.T.: 0.000 min  
 Response: 141066389  
 Conc: 53.74 ng/ml



#2 alpha-BHC  
 R.T.: 3.759 min  
 Delta R.T.: 0.000 min  
 Response: 571764033  
 Conc: 48.39 ng/ml



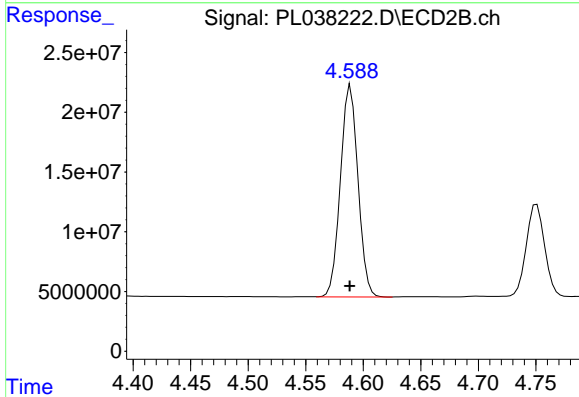
#2 alpha-BHC  
 R.T.: 4.309 min  
 Delta R.T.: 0.000 min  
 Response: 210743225  
 Conc: 54.45 ng/ml



#3 gamma-BHC (Lindane)

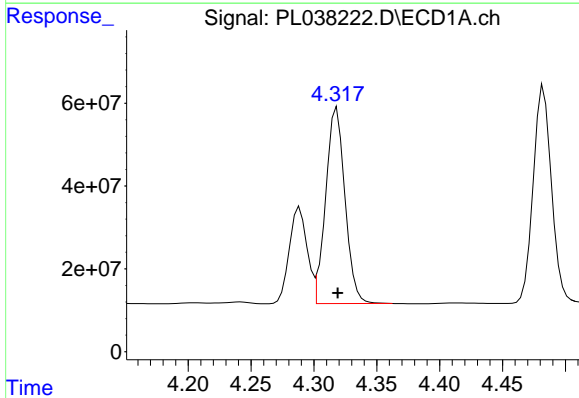
R.T.: 4.035 min  
 Delta R.T.: 0.000 min  
 Response: 518003822  
 Conc: 49.41 ng/ml

Instrument :  
 ECD\_L  
 ClientSampleId :



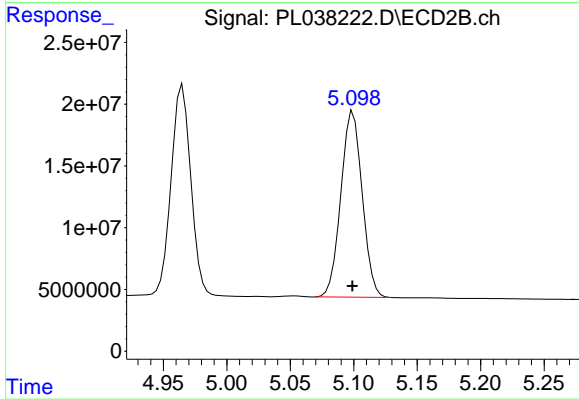
#3 gamma-BHC (Lindane)

R.T.: 4.589 min  
 Delta R.T.: 0.000 min  
 Response: 188819640  
 Conc: 52.28 ng/ml



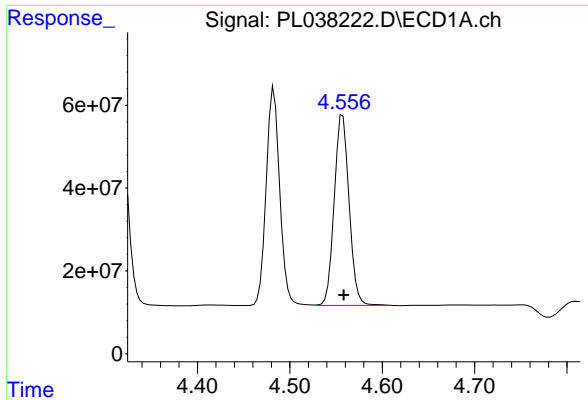
#4 Heptachlor

R.T.: 4.318 min  
 Delta R.T.: 0.000 min  
 Response: 505313668  
 Conc: 47.50 ng/ml



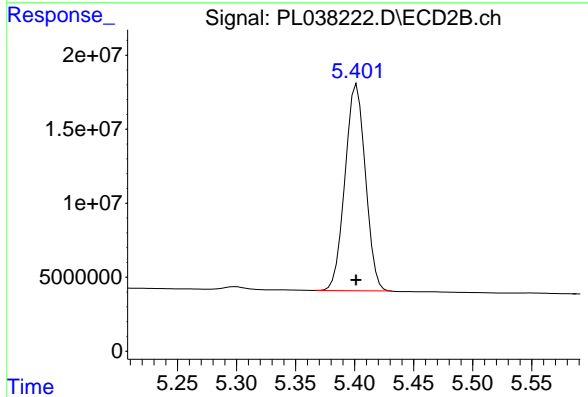
#4 Heptachlor

R.T.: 5.100 min  
 Delta R.T.: 0.000 min  
 Response: 176222050  
 Conc: 55.13 ng/ml

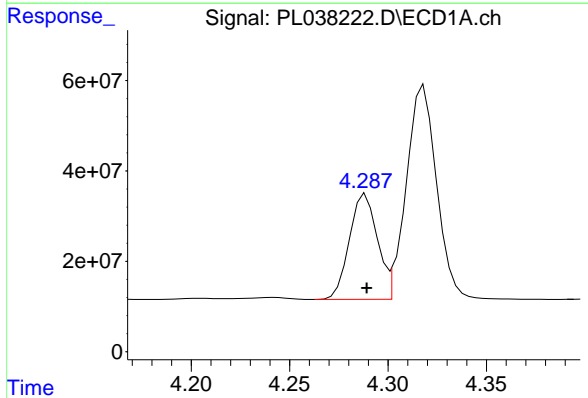


#5 Aldrin  
 R.T.: 4.557 min  
 Delta R.T.: -0.001 min  
 Response: 514723606  
 Conc: 49.17 ng/ml

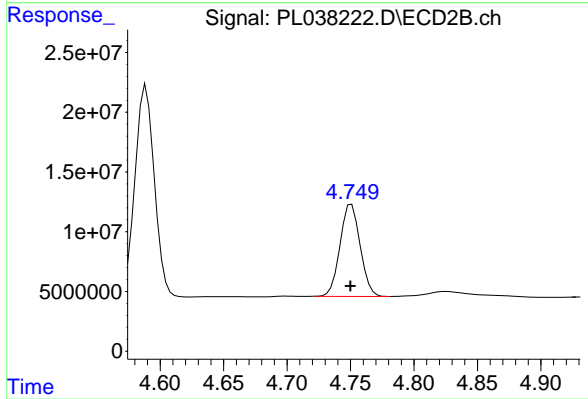
Instrument :  
 ECD\_L  
 ClientSampled :



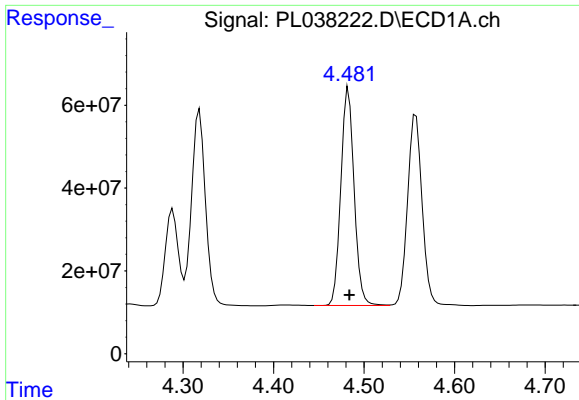
#5 Aldrin  
 R.T.: 5.402 min  
 Delta R.T.: 0.000 min  
 Response: 167773680  
 Conc: 54.36 ng/ml



#6 beta-BHC  
 R.T.: 4.289 min  
 Delta R.T.: 0.000 min  
 Response: 230101258  
 Conc: 48.75 ng/ml

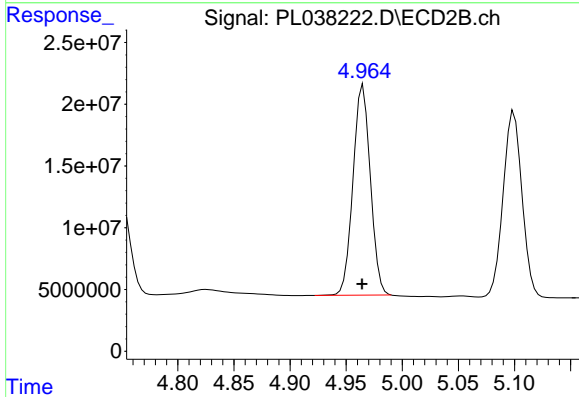


#6 beta-BHC  
 R.T.: 4.751 min  
 Delta R.T.: 0.000 min  
 Response: 85072956  
 Conc: 56.08 ng/ml

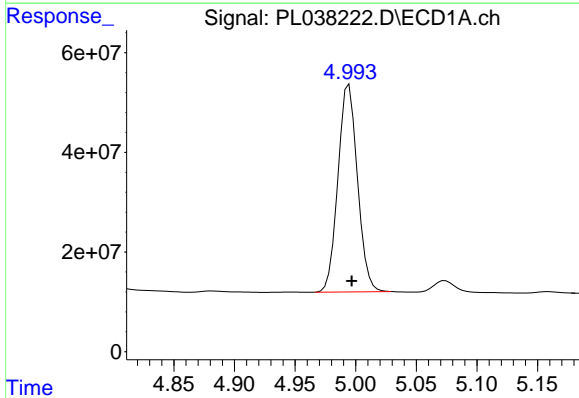


#7 delta-BHC  
 R.T.: 4.483 min  
 Delta R.T.: 0.000 min  
 Response: 536282608  
 Conc: 49.41 ng/ml

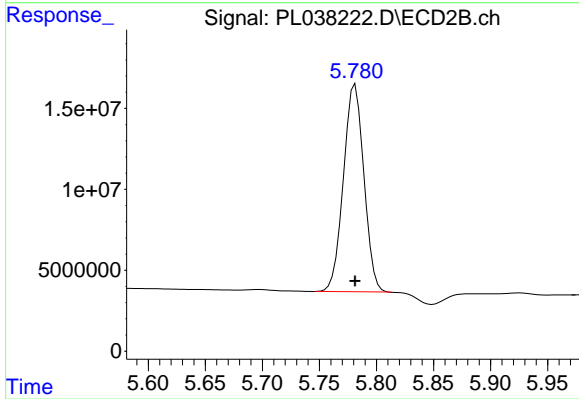
Instrument :  
 ECD\_L  
 ClientSampleId :



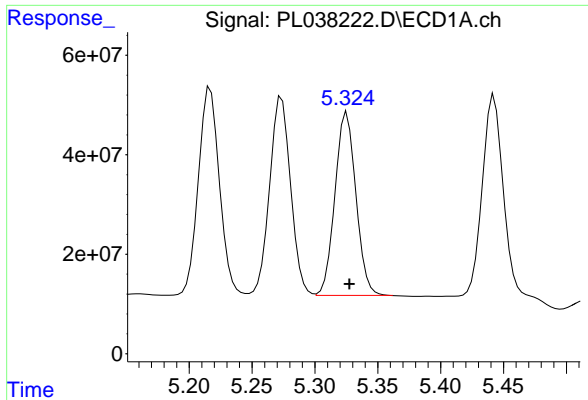
#7 delta-BHC  
 R.T.: 4.965 min  
 Delta R.T.: 0.000 min  
 Response: 182986325  
 Conc: 55.17 ng/ml



#8 Heptachlor epoxide  
 R.T.: 4.995 min  
 Delta R.T.: -0.002 min  
 Response: 465814848  
 Conc: 49.41 ng/ml

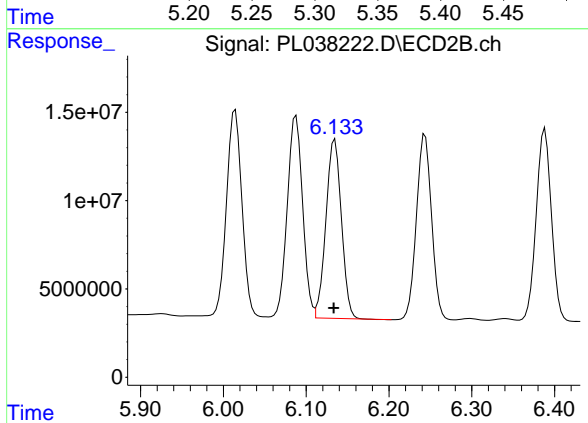


#8 Heptachlor epoxide  
 R.T.: 5.781 min  
 Delta R.T.: 0.000 min  
 Response: 159828404  
 Conc: 56.24 ng/ml

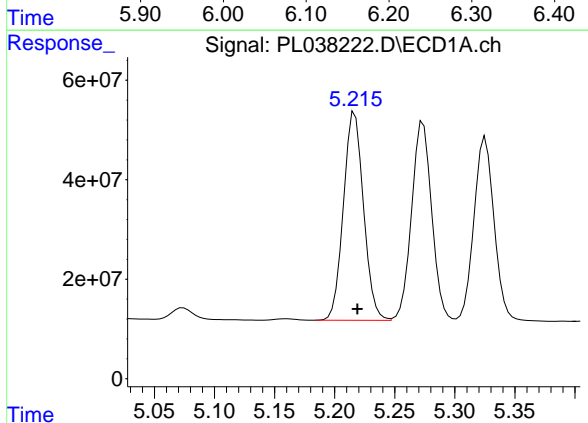


#9 Endosulfan I  
 R.T.: 5.325 min  
 Delta R.T.: -0.002 min  
 Response: 427130890  
 Conc: 49.38 ng/ml

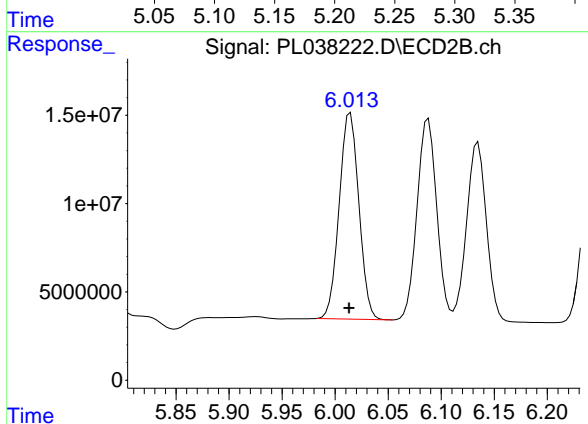
Instrument :  
 ECD\_L  
 ClientSampled :



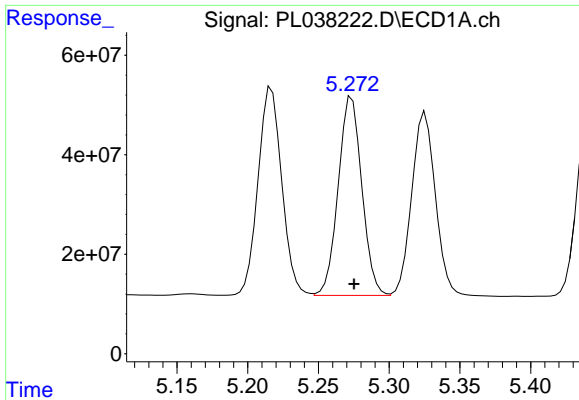
#9 Endosulfan I  
 R.T.: 6.135 min  
 Delta R.T.: 0.001 min  
 Response: 131783203  
 Conc: 51.24 ng/ml



#10 gamma-Chlordane  
 R.T.: 5.217 min  
 Delta R.T.: -0.002 min  
 Response: 488133419  
 Conc: 49.39 ng/ml

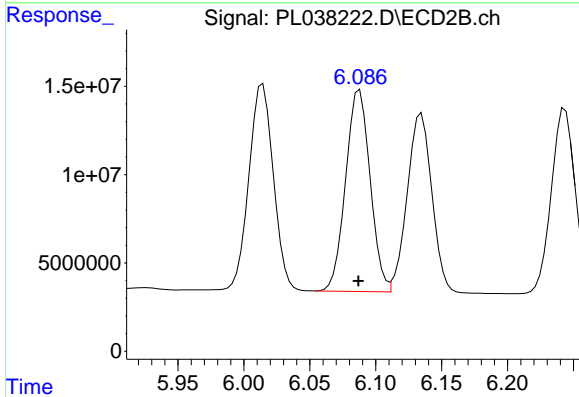


#10 gamma-Chlordane  
 R.T.: 6.014 min  
 Delta R.T.: 0.001 min  
 Response: 150521732  
 Conc: 51.92 ng/ml

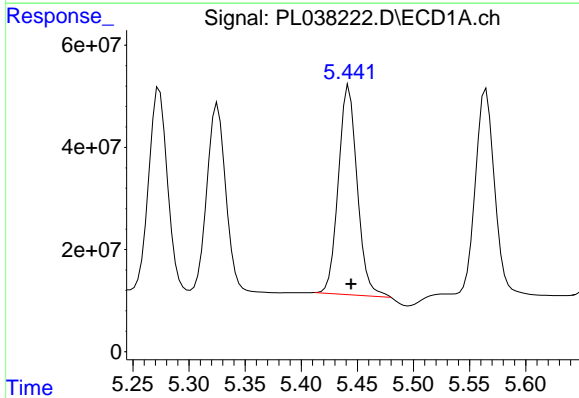


#11 alpha-Chlordane  
 R.T.: 5.274 min  
 Delta R.T.: -0.002 min  
 Response: 465038507  
 Conc: 49.13 ng/ml

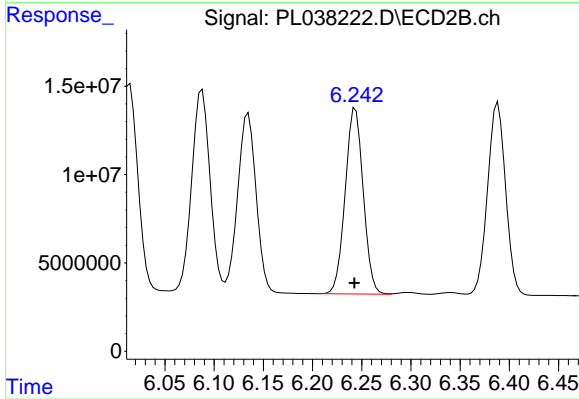
Instrument :  
 ECD\_L  
 ClientSampleId :



#11 alpha-Chlordane  
 R.T.: 6.088 min  
 Delta R.T.: 0.001 min  
 Response: 147636057  
 Conc: 51.51 ng/ml

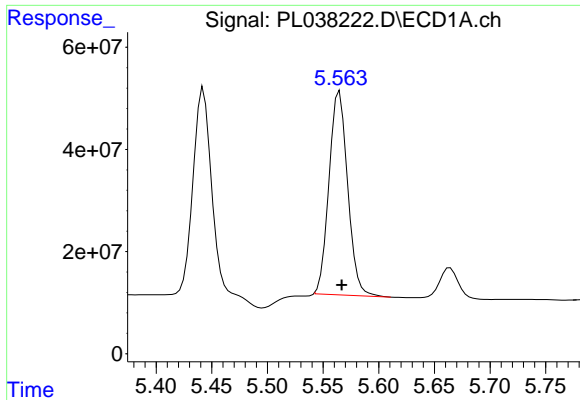


#12 4,4'-DDE  
 R.T.: 5.443 min  
 Delta R.T.: -0.002 min  
 Response: 478765821  
 Conc: 49.93 ng/ml



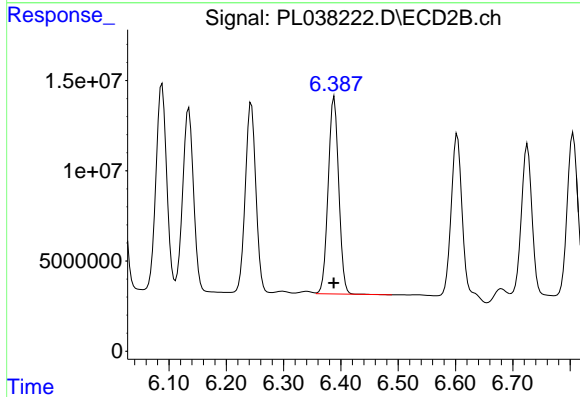
#12 4,4'-DDE  
 R.T.: 6.244 min  
 Delta R.T.: 0.001 min  
 Response: 134142904  
 Conc: 50.16 ng/ml



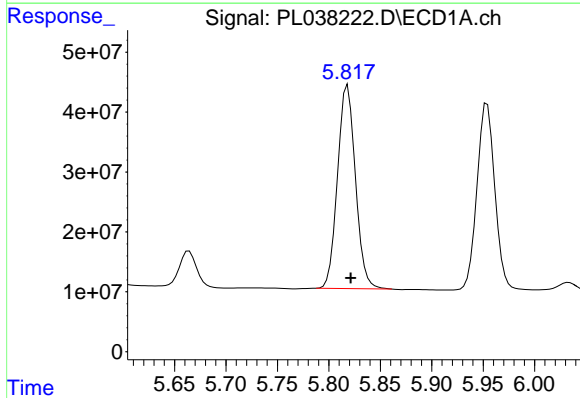


#13 Dieldrin  
 R.T.: 5.565 min  
 Delta R.T.: -0.002 min  
 Response: 463978233  
 Conc: 48.28 ng/ml

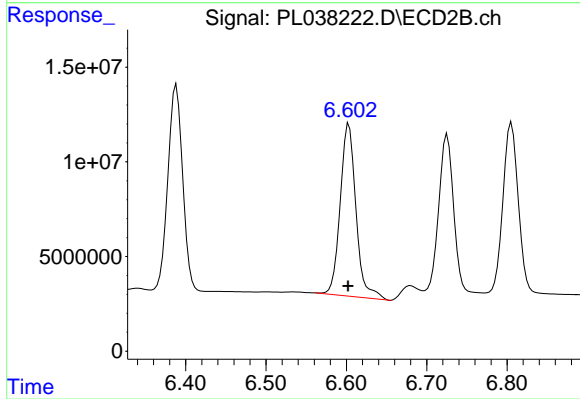
Instrument :  
 ECD\_L  
 ClientSampled :



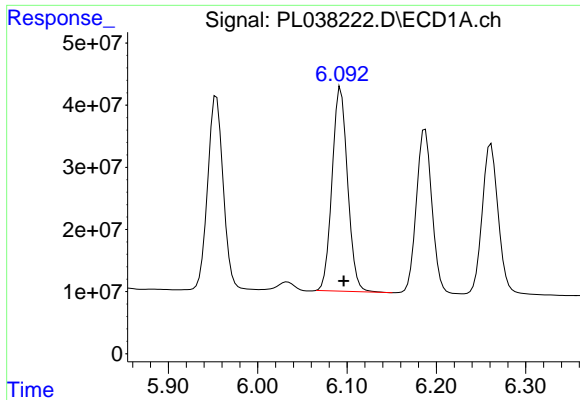
#13 Dieldrin  
 R.T.: 6.388 min  
 Delta R.T.: 0.000 min  
 Response: 139563910  
 Conc: 51.28 ng/ml



#14 Endrin  
 R.T.: 5.818 min  
 Delta R.T.: -0.003 min  
 Response: 411735067  
 Conc: 47.39 ng/ml



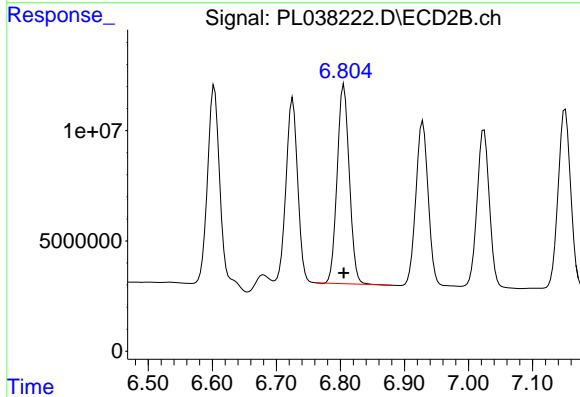
#14 Endrin  
 R.T.: 6.603 min  
 Delta R.T.: 0.001 min  
 Response: 124412004  
 Conc: 52.10 ng/ml



#15 Endosulfan II

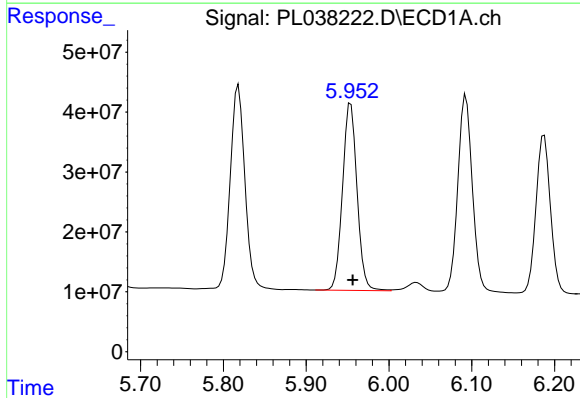
R.T.: 6.093 min  
 Delta R.T.: -0.003 min  
 Response: 395285767  
 Conc: 49.85 ng/ml

Instrument :  
 ECD\_L  
 ClientSampled :



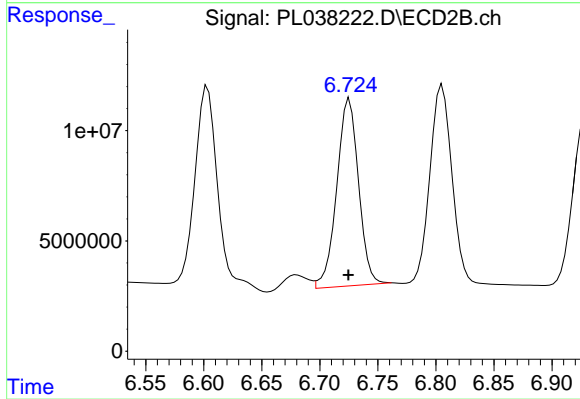
#15 Endosulfan II

R.T.: 6.806 min  
 Delta R.T.: 0.000 min  
 Response: 118929552  
 Conc: 49.52 ng/ml



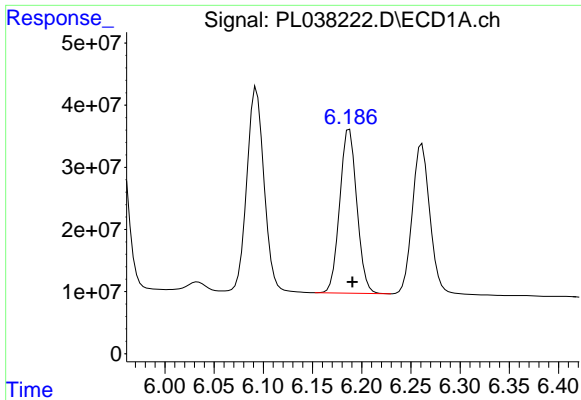
#16 4,4'-DDD

R.T.: 5.954 min  
 Delta R.T.: -0.003 min  
 Response: 380593964  
 Conc: 51.88 ng/ml



#16 4,4'-DDD

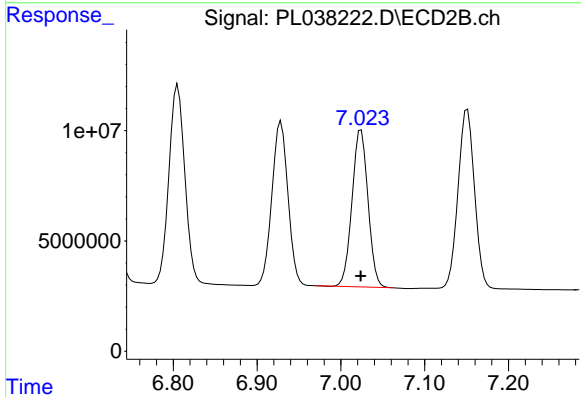
R.T.: 6.726 min  
 Delta R.T.: 0.001 min  
 Response: 110909590  
 Conc: 51.82 ng/ml



#17 4,4'-DDT

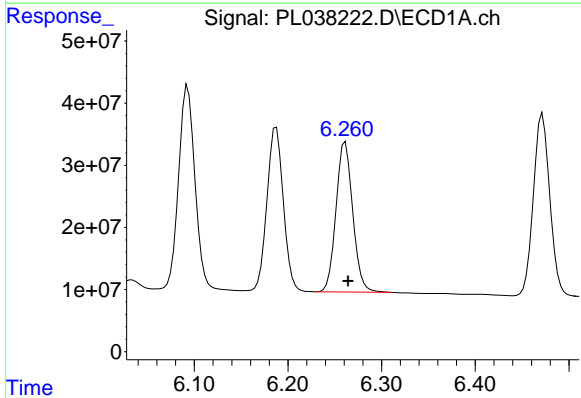
R.T.: 6.187 min  
Delta R.T.: -0.003 min  
Response: 319223564  
Conc: 42.97 ng/ml

Instrument :  
ECD\_L  
ClientSampled :



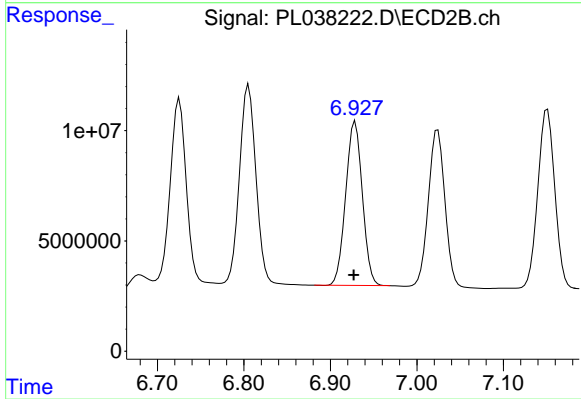
#17 4,4'-DDT

R.T.: 7.024 min  
Delta R.T.: 0.000 min  
Response: 94355168  
Conc: 44.26 ng/ml



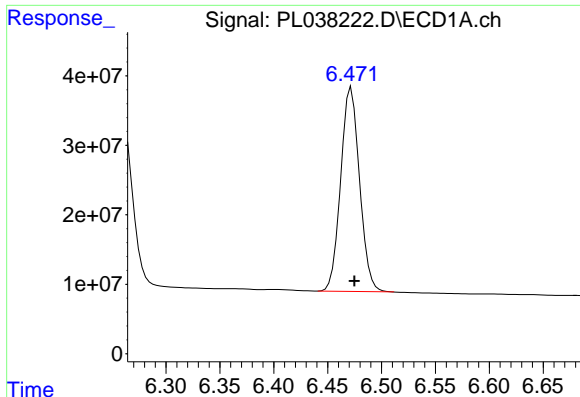
#18 Endrin aldehyde

R.T.: 6.261 min  
Delta R.T.: -0.003 min  
Response: 299456460  
Conc: 47.03 ng/ml



#18 Endrin aldehyde

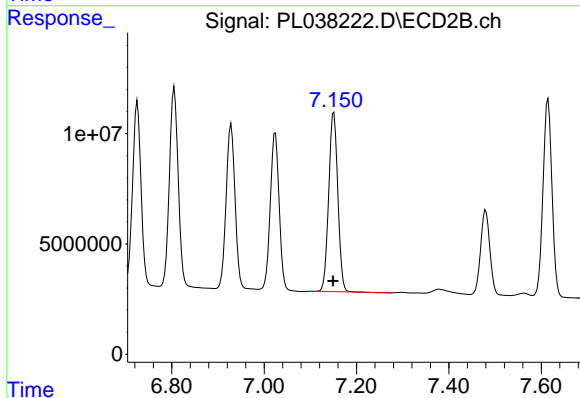
R.T.: 6.929 min  
Delta R.T.: 0.002 min  
Response: 99235114  
Conc: 50.85 ng/ml



#19 Endosulfan Sulfate

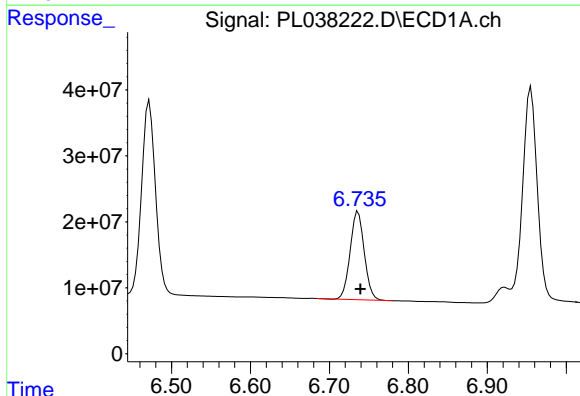
R.T.: 6.472 min  
 Delta R.T.: -0.003 min  
 Response: 357400679  
 Conc: 47.32 ng/ml

Instrument :  
 ECD\_L  
 ClientSampled :



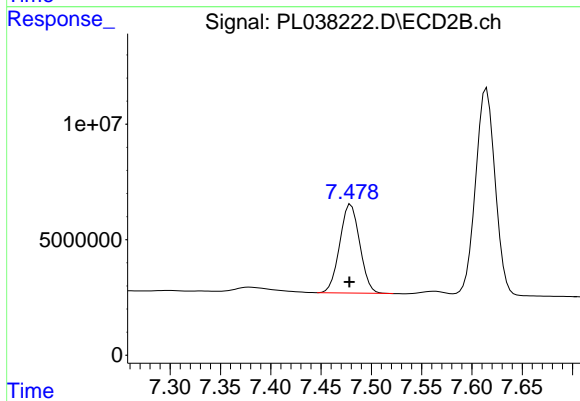
#19 Endosulfan Sulfate

R.T.: 7.151 min  
 Delta R.T.: 0.001 min  
 Response: 111354228  
 Conc: 51.09 ng/ml



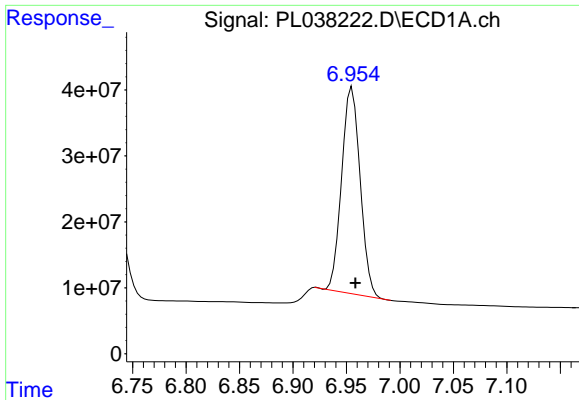
#20 Methoxychlor

R.T.: 6.736 min  
 Delta R.T.: -0.003 min  
 Response: 166331660  
 Conc: 43.23 ng/ml



#20 Methoxychlor

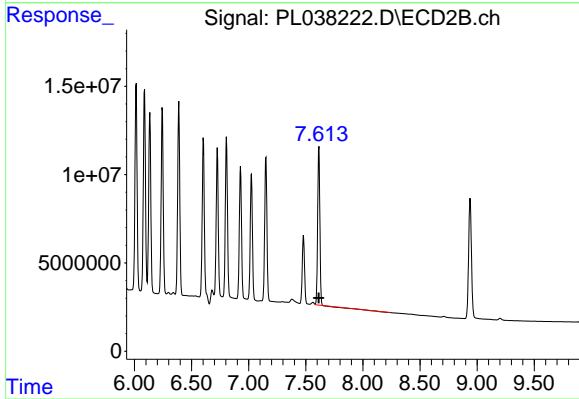
R.T.: 7.480 min  
 Delta R.T.: 0.002 min  
 Response: 53030192  
 Conc: 46.57 ng/ml



#21 Endrin ketone

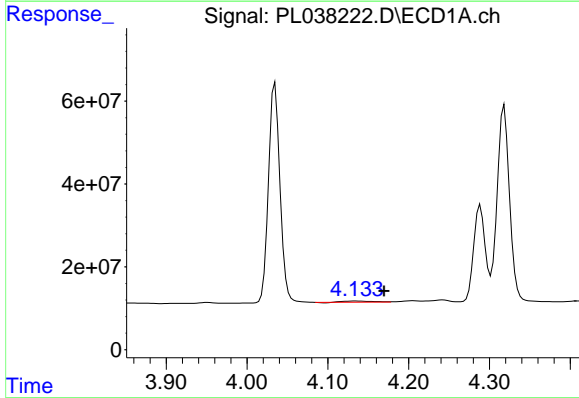
R.T.: 6.955 min  
 Delta R.T.: -0.003 min  
 Response: 376469611  
 Conc: 47.98 ng/ml

Instrument :  
 ECD\_L  
 ClientSampled :



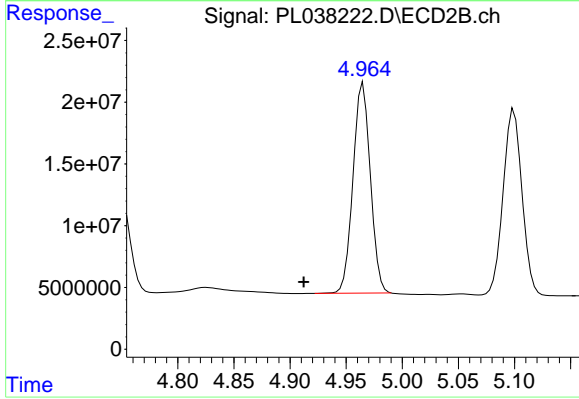
#21 Endrin ketone

R.T.: 7.615 min  
 Delta R.T.: 0.002 min  
 Response: 117697087  
 Conc: 49.38 ng/ml



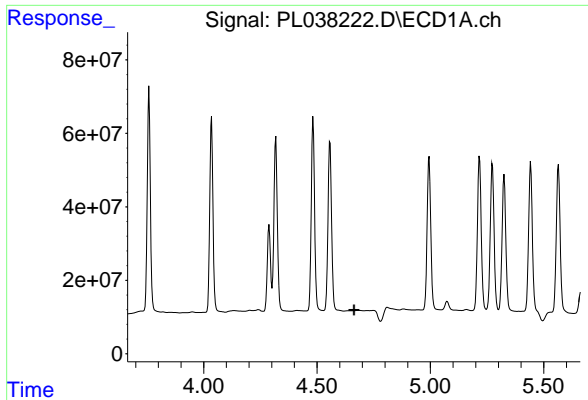
#23 Chlordane-1

R.T.: 4.134 min  
 Delta R.T.: -0.035 min  
 Response: 7468180  
 Conc: 21.57 ng/ml



#23 Chlordane-1

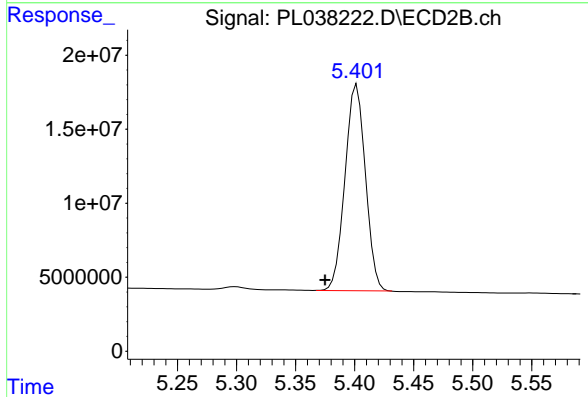
R.T.: 4.965 min  
 Delta R.T.: 0.053 min  
 Response: 182986325  
 Conc: 1579.03 ng/ml



#24 Chlordane-2

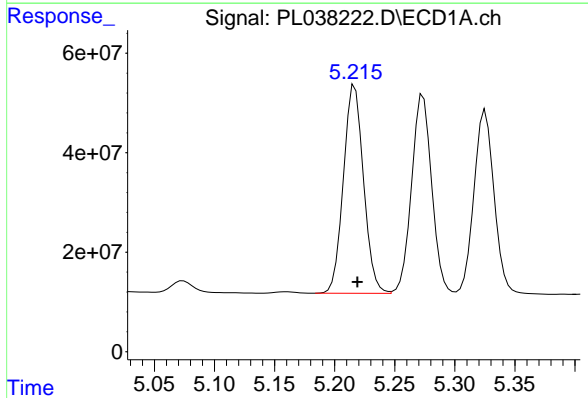
R.T.: 0.000 min  
 Exp R.T.: 4.663 min  
 Response: 0  
 Conc: N.D.

Instrument :  
 ECD\_L  
 ClientSampled :



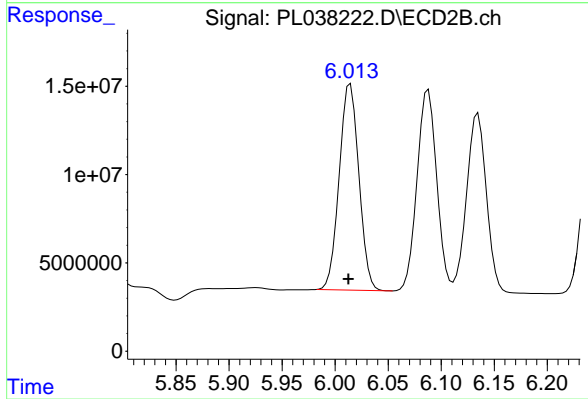
#24 Chlordane-2

R.T.: 5.402 min  
 Delta R.T.: 0.027 min  
 Response: 167773680  
 Conc: 1401.03 ng/ml



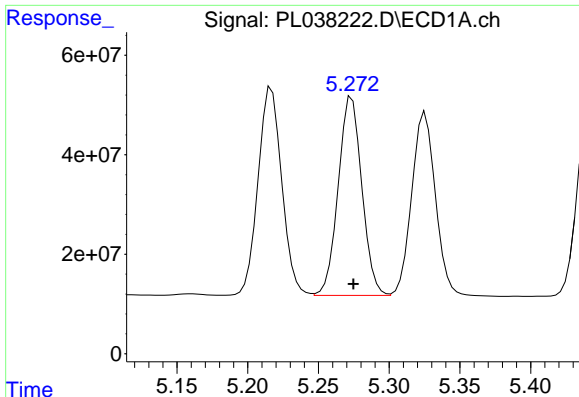
#25 Chlordane-3

R.T.: 5.217 min  
 Delta R.T.: -0.002 min  
 Response: 488133419  
 Conc: 419.60 ng/ml



#25 Chlordane-3

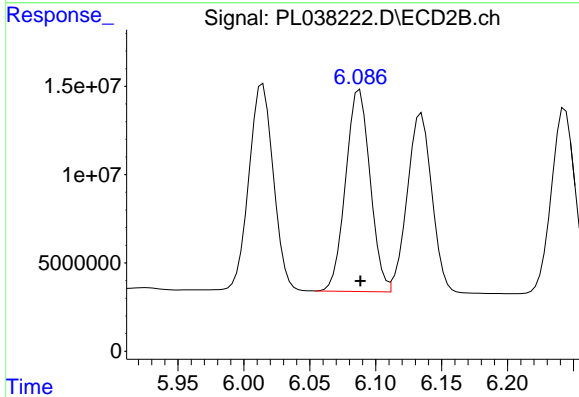
R.T.: 6.014 min  
 Delta R.T.: 0.002 min  
 Response: 150521732  
 Conc: 369.02 ng/ml



#26 Chlordane-4

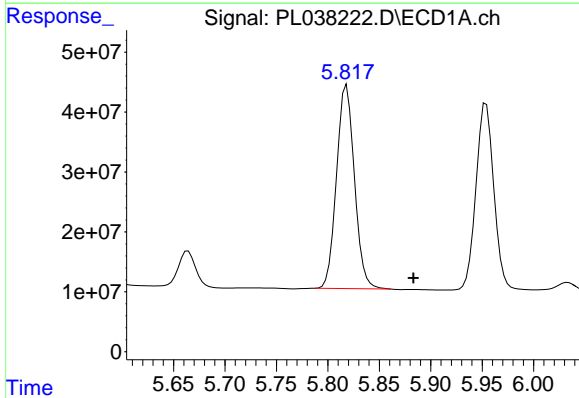
R.T.: 5.274 min  
 Delta R.T.: -0.001 min  
 Response: 465038507  
 Conc: 442.31 ng/ml

Instrument :  
 ECD\_L  
 ClientSampled :



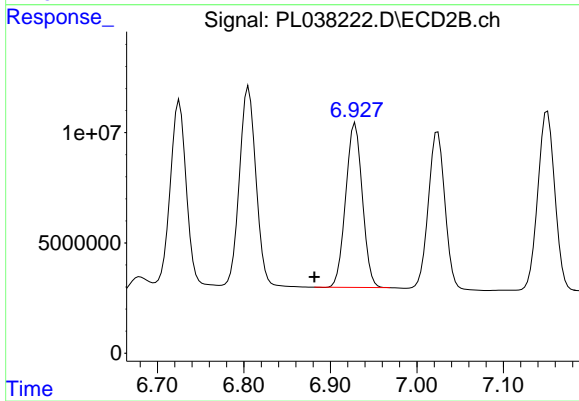
#26 Chlordane-4

R.T.: 6.088 min  
 Delta R.T.: 0.000 min  
 Response: 147636057  
 Conc: 300.49 ng/ml



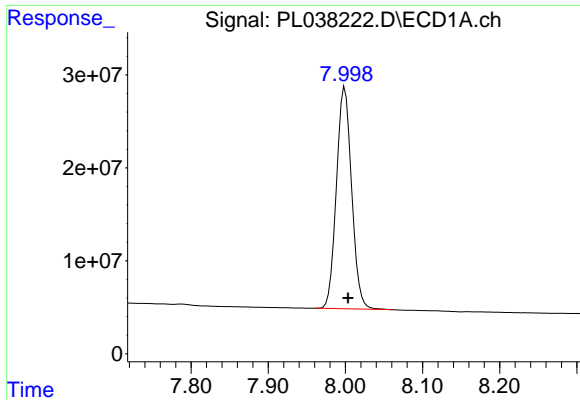
#27 Chlordane-5

R.T.: 5.818 min  
 Delta R.T.: -0.065 min  
 Response: 411735067  
 Conc: 2571.20 ng/ml



#27 Chlordane-5

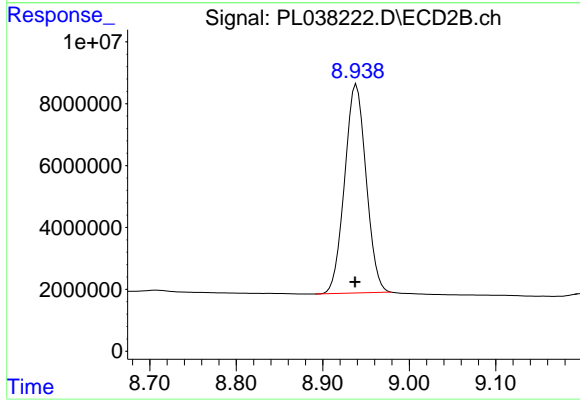
R.T.: 6.929 min  
 Delta R.T.: 0.047 min  
 Response: 99235114  
 Conc: 1107.79 ng/ml



#28 Decachlorobiphenyl

R.T.: 7.999 min  
Delta R.T.: -0.004 min  
Response: 327087613  
Conc: 43.12 ng/ml

Instrument :  
ECD\_L  
ClientSampleId :



#28 Decachlorobiphenyl

R.T.: 8.939 min  
Delta R.T.: 0.002 min  
Response: 116149176  
Conc: 47.52 ng/ml