

Data Path : Z:\pestpcbsrv\HPCHEM1\ECD\_L\Data\PL071818\  
 Data File : PL038270.D  
 Signal(s) : Signal #1: ECD1A.ch Signal #2: ECD2B.ch  
 Acq On : 19 Jul 2018 06:49  
 Operator : AJ\SJ  
 Sample : J4030-14  
 Misc :  
 ALS Vial : 61 Sample Multiplier: 1

Instrument :  
 ECD\_L  
 ClientSampled :

Integration File signal 1: autoint1.e  
 Integration File signal 2: autoint2.e  
 Quant Time: Jul 19 07:43:24 2018  
 Quant Method : Z:\PESTPCBSRV\HPCHEM1\ECD\_L\methods\PL071318.M  
 Quant Title : GC Extractables  
 QLast Update : Sat Jul 14 00:12:12 2018  
 Response via : Initial Calibration  
 Integrator: ChemStation

Volume Inj. : 2 µl  
 Signal #1 Phase : ZB-MR1 Signal #2 Phase: ZB-MR2  
 Signal #1 Info : 30M x 0.32mm x0.5 Signal #2 Info : 30M x 0.32mm x0.25µm

	Compound	RT#1	RT#2	Resp#1	Resp#2	ng/ml	ng/ml
-----							
System Monitoring Compounds							
1)	SA Tetrachlo...	3.329	3.930	74539918	25975647	10.010	9.896
28)	SA Decachlor...	7.999	8.937	85875543	35222801	11.320	14.409 #
Target Compounds							
2)	A alpha-BHC	3.772	4.271f	4873025	4462017	0.412	1.153 #
3)	MA gamma-BHC...	4.079f	4.593	2102897	3695055	0.201	1.023 #
4)	MA Heptachlor	4.317	5.120	3317712	217631	0.312	0.068 #
5)	MB Aldrin	4.567	5.421	8100289	359609	0.774	0.117 #
7)	B delta-BHC	4.486	4.962	18185300	-177378	1.675	N.D. #
8)	B Heptachlo...	4.995	5.773	4312232	4563554	0.457	1.606 #
9)	A Endosulfan I	5.353	6.172f	1378721	1565702	0.159	0.609 #
10)	B gamma-Chl...	5.217	6.013	57866467	5254643	5.855	1.812 #
11)	B alpha-Chl...	5.272	6.090	29830254	14317335	3.151	4.995 #
12)	B 4,4'-DDE	5.441	6.242	65249031	20633924	6.805	7.716
13)	MA Dieldrin	5.565	6.384	27696272	4672311	2.882	1.717 #
14)	MA Endrin	5.820	6.598	222519	2858308	0.026	1.197 #
15)	B Endosulfa...	6.082	6.801	6171261	1203589	0.778	0.501 #
16)	A 4,4'-DDD	5.952	6.734	11882807	7760759	1.620	3.626 #
17)	MA 4,4'-DDT	6.182	6.999	31145734	10999203	4.193	5.159
18)	B Endrin al...	6.273	6.936	7450737	350370	1.170	0.180 #
19)	B Endosulfa...	6.464	7.134	13248549	2607034	1.754	1.196 #
20)	A Methoxychlor	6.710	7.489	28328519	157439	7.363	0.138 #
21)	B Endrin ke...	6.953	7.594	1214209	8594007	0.155	3.606 #
23)	Chlordane-1	4.174	4.913	17321663	875278	50.026	7.553 #
24)	Chlordane-2	4.645	5.372	8536726	2230951	23.065	18.630
25)	Chlordane-3	5.217	6.013	57866467	5254643	49.742	12.882 #
26)	Chlordane-4	5.272	6.090	29830254	14317335	28.372	29.141
27)	Chlordane-5	5.878	6.852	20030565	2575443	125.087	28.750 #

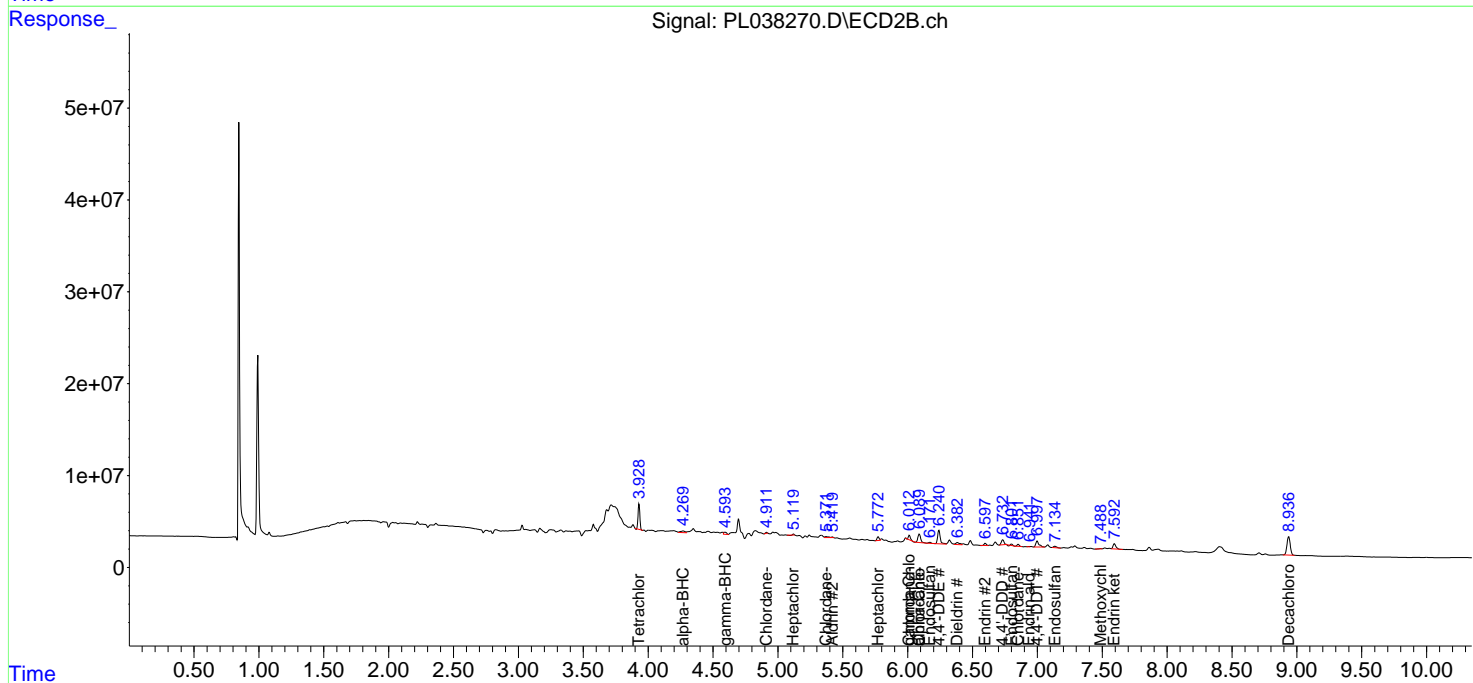
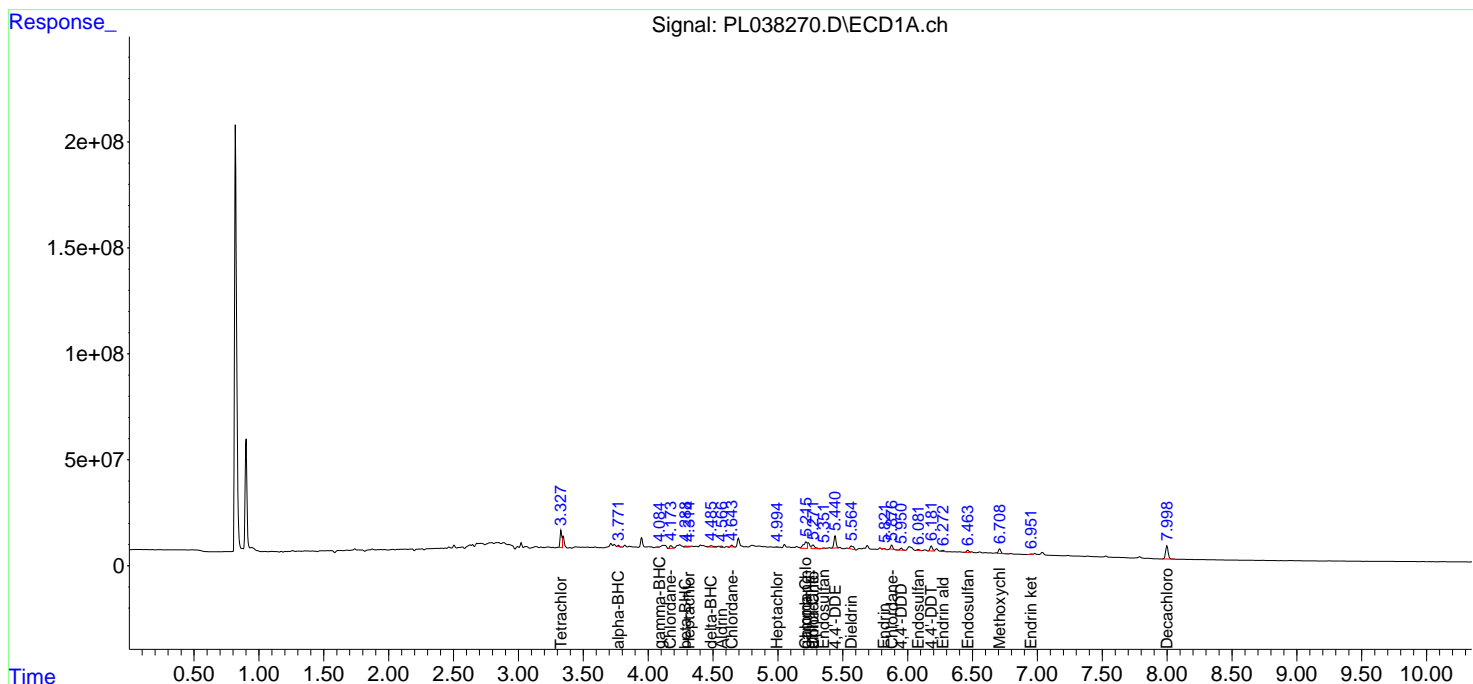
(f)=RT Delta > 1/2 Window (#)=Amounts differ by > 25% (m)=manual int.

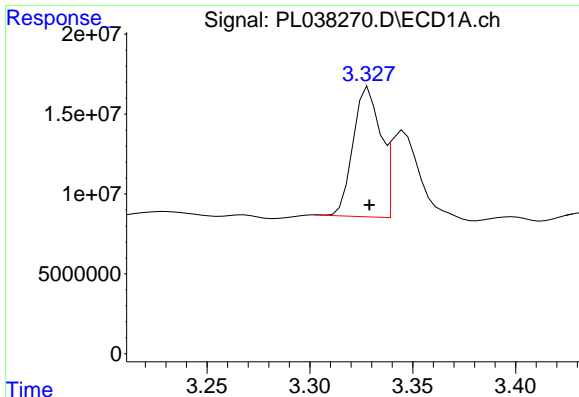
Data Path : Z:\pestpcbsrv\HPCHEM1\ECD\_L\Data\PL071818\  
 Data File : PL038270.D  
 Signal(s) : Signal #1: ECD1A.ch Signal #2: ECD2B.ch  
 Acq On : 19 Jul 2018 06:49  
 Operator : AJ\SJ  
 Sample : J4030-14  
 Misc :  
 ALS Vial : 61 Sample Multiplier: 1

Instrument :  
 ECD\_L  
 ClientSampled :

Integration File signal 1: autoint1.e  
 Integration File signal 2: autoint2.e  
 Quant Time: Jul 19 07:43:24 2018  
 Quant Method : Z:\PESTPCBSRV\HPCHEM1\ECD\_L\methods\PL071318.M  
 Quant Title : GC Extractables  
 QLast Update : Sat Jul 14 00:12:12 2018  
 Response via : Initial Calibration  
 Integrator: ChemStation

Volume Inj. : 2 µl  
 Signal #1 Phase : ZB-MR1 Signal #2 Phase: ZB-MR2  
 Signal #1 Info : 30M x 0.32mm x0.5 Signal #2 Info : 30M x 0.32mm x0.25µm

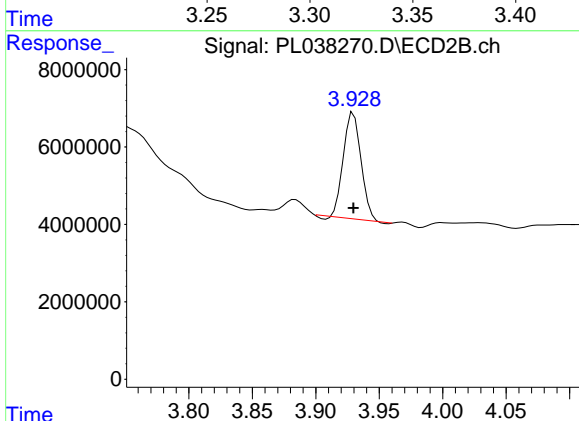




#1 Tetrachloro-m-xylene

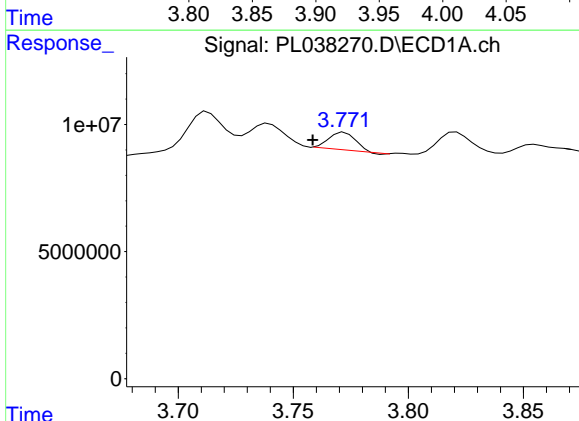
R.T.: 3.329 min  
Delta R.T.: 0.000 min  
Response: 74539918  
Conc: 10.01 ng/ml

Instrument :  
ECD\_L  
ClientSampleId :



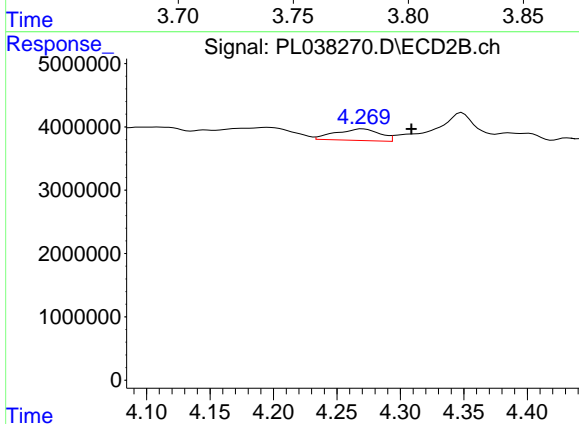
#1 Tetrachloro-m-xylene

R.T.: 3.930 min  
Delta R.T.: 0.000 min  
Response: 25975647  
Conc: 9.90 ng/ml



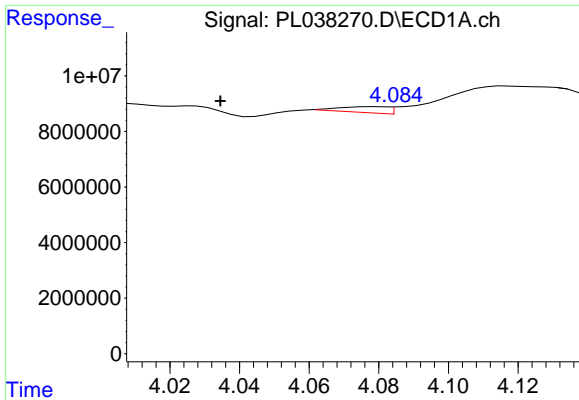
#2 alpha-BHC

R.T.: 3.772 min  
Delta R.T.: 0.014 min  
Response: 4873025  
Conc: 0.41 ng/ml



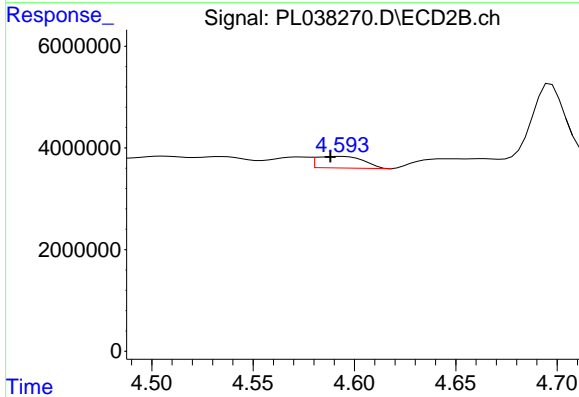
#2 alpha-BHC

R.T.: 4.271 min  
Delta R.T.: -0.038 min  
Response: 4462017  
Conc: 1.15 ng/ml

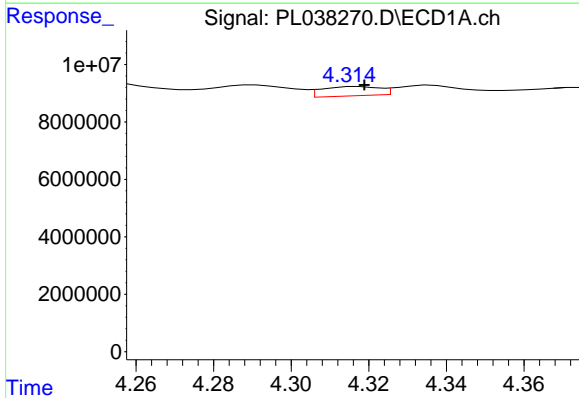


#3 gamma-BHC (Lindane)  
 R.T.: 4.079 min  
 Delta R.T.: 0.045 min  
 Response: 2102897  
 Conc: 0.20 ng/ml

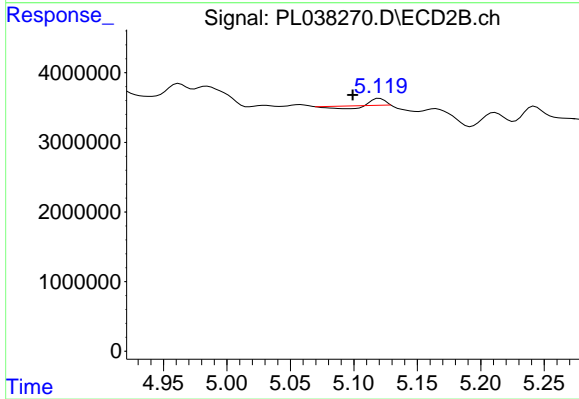
Instrument :  
 ECD\_L  
 ClientSampleId :



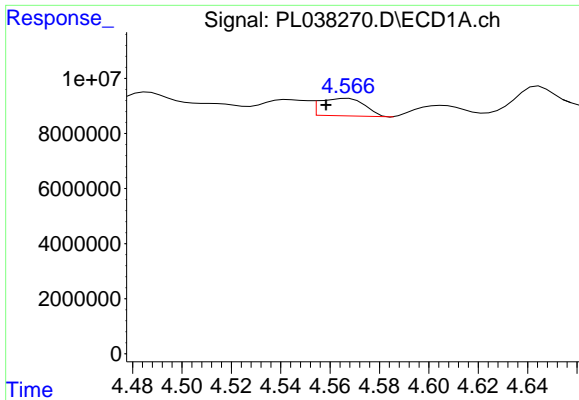
#3 gamma-BHC (Lindane)  
 R.T.: 4.593 min  
 Delta R.T.: 0.005 min  
 Response: 3695055  
 Conc: 1.02 ng/ml



#4 Heptachlor  
 R.T.: 4.317 min  
 Delta R.T.: -0.002 min  
 Response: 3317712  
 Conc: 0.31 ng/ml

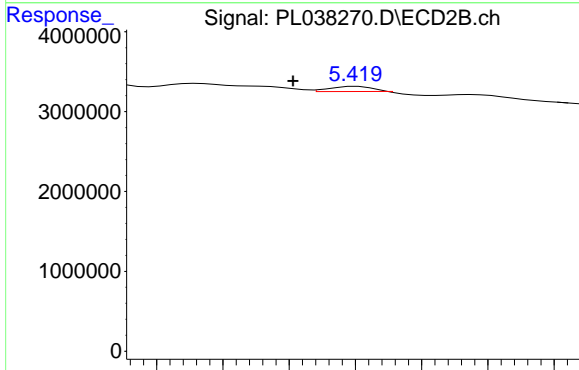


#4 Heptachlor  
 R.T.: 5.120 min  
 Delta R.T.: 0.021 min  
 Response: 217631  
 Conc: 0.07 ng/ml

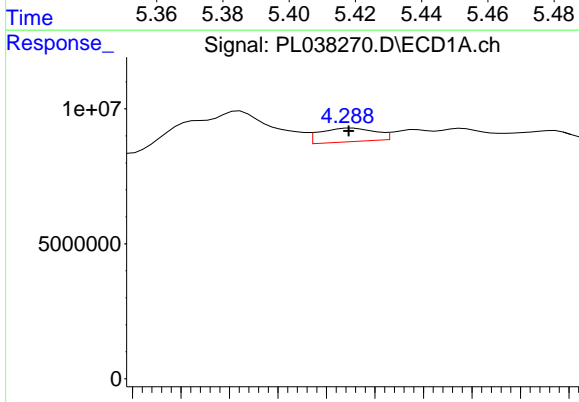


#5 Aldrin  
 R.T.: 4.567 min  
 Delta R.T.: 0.009 min  
 Response: 8100289  
 Conc: 0.77 ng/ml

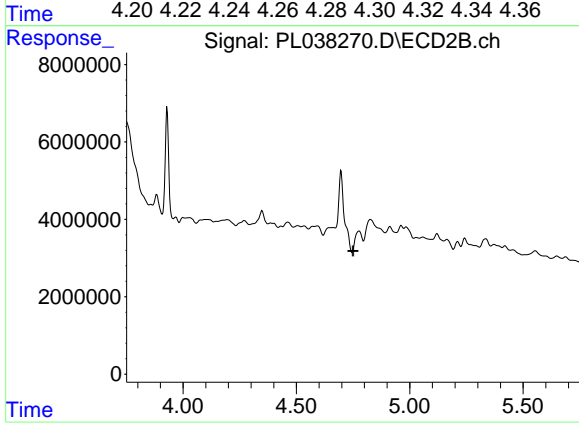
Instrument :  
 ECD\_L  
 ClientSampleId :



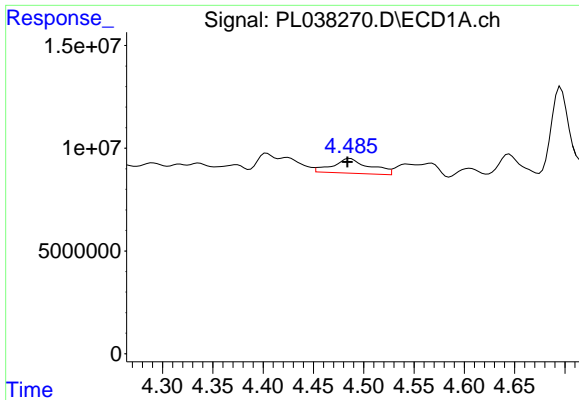
#5 Aldrin  
 R.T.: 5.421 min  
 Delta R.T.: 0.019 min  
 Response: 359609  
 Conc: 0.12 ng/ml



#6 beta-BHC  
 R.T.: 4.290 min  
 Delta R.T.: 0.001 min  
 Response: 8033449  
 Conc: 1.70 ng/ml

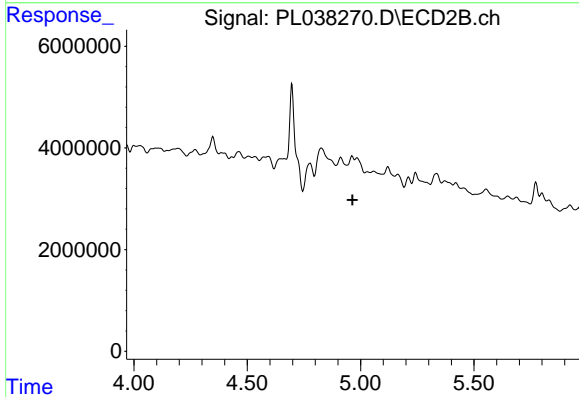


#6 beta-BHC  
 R.T.: 4.777 min  
 Delta R.T.: 0.027 min  
 Response: -7995397  
 Conc: N.D.

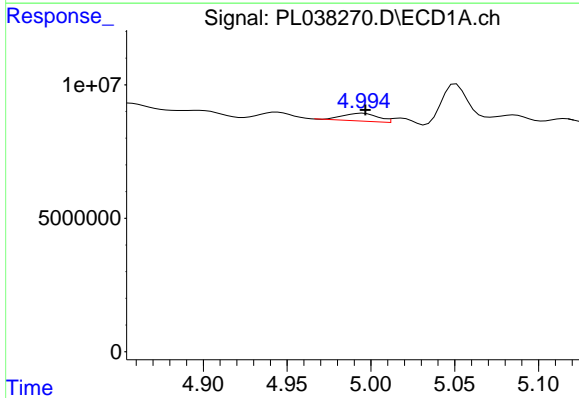


#7 delta-BHC  
 R.T.: 4.486 min  
 Delta R.T.: 0.003 min  
 Response: 18185300  
 Conc: 1.68 ng/ml

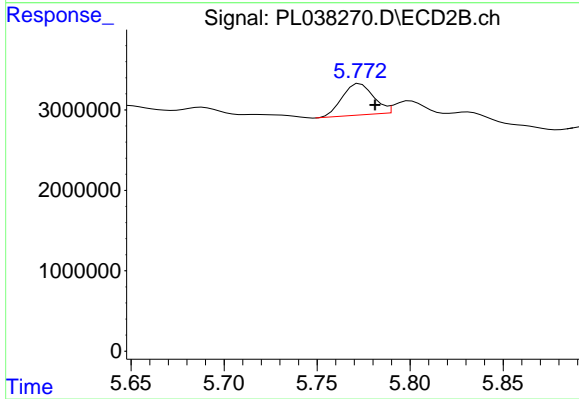
Instrument :  
 ECD\_L  
 ClientSampled :



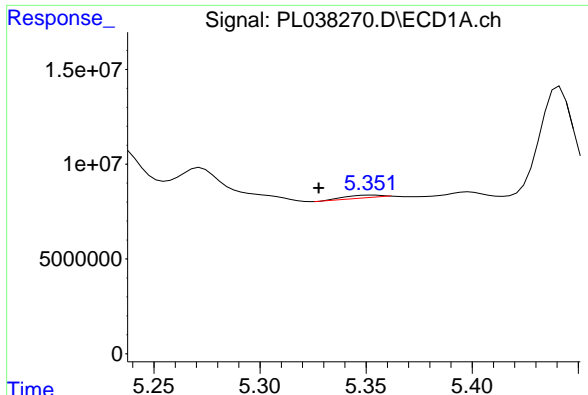
#7 delta-BHC  
 R.T.: 4.962 min  
 Delta R.T.: -0.002 min  
 Response: -177378  
 Conc: N.D.



#8 Heptachlor epoxide  
 R.T.: 4.995 min  
 Delta R.T.: -0.001 min  
 Response: 4312232  
 Conc: 0.46 ng/ml

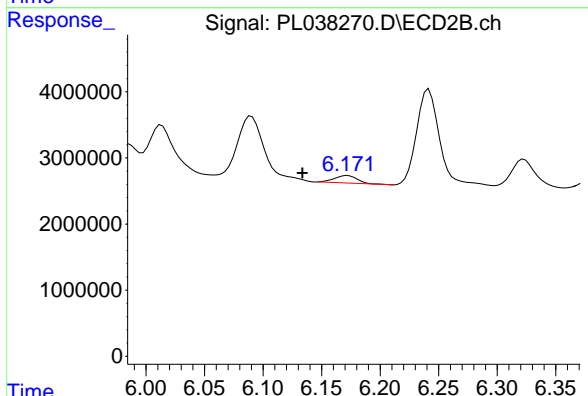


#8 Heptachlor epoxide  
 R.T.: 5.773 min  
 Delta R.T.: -0.008 min  
 Response: 4563554  
 Conc: 1.61 ng/ml

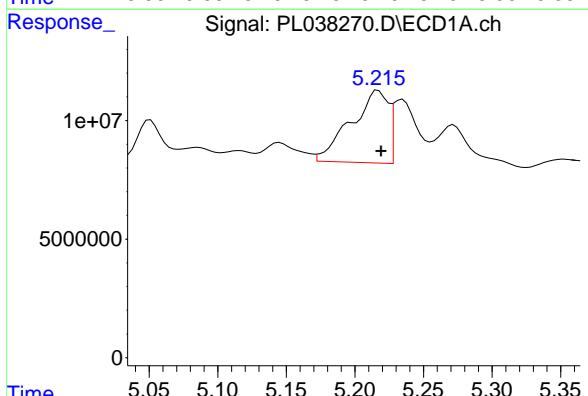


#9 Endosulfan I  
 R.T.: 5.353 min  
 Delta R.T.: 0.025 min  
 Response: 1378721  
 Conc: 0.16 ng/ml

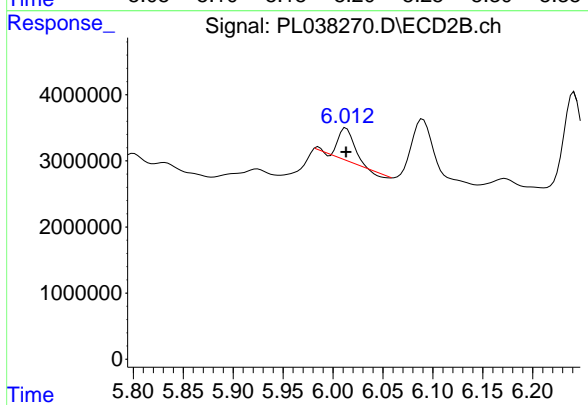
Instrument :  
 ECD\_L  
 ClientSampled :



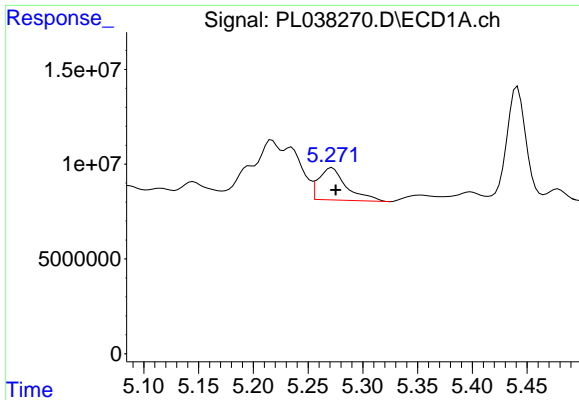
#9 Endosulfan I  
 R.T.: 6.172 min  
 Delta R.T.: 0.039 min  
 Response: 1565702  
 Conc: 0.61 ng/ml



#10 gamma-Chlordane  
 R.T.: 5.217 min  
 Delta R.T.: -0.002 min  
 Response: 57866467  
 Conc: 5.85 ng/ml

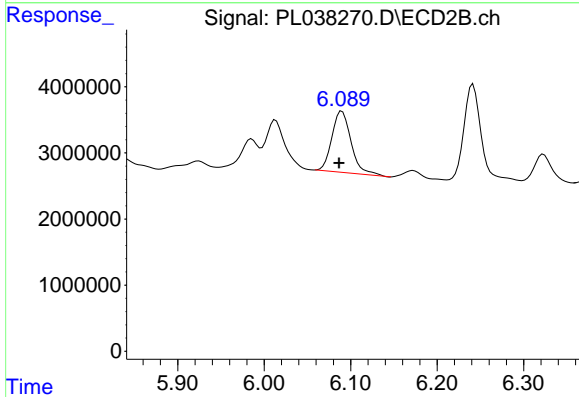


#10 gamma-Chlordane  
 R.T.: 6.013 min  
 Delta R.T.: 0.000 min  
 Response: 5254643  
 Conc: 1.81 ng/ml

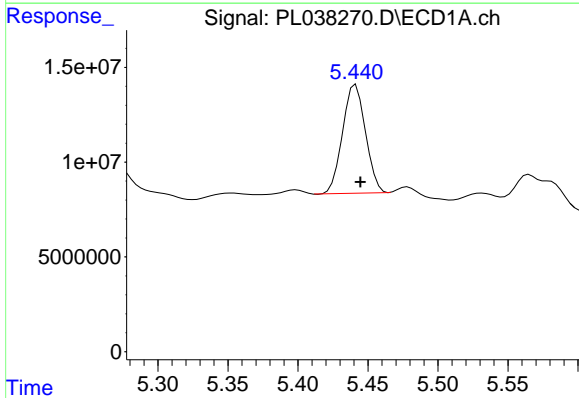


#11 alpha-Chlordane  
 R.T.: 5.272 min  
 Delta R.T.: -0.003 min  
 Response: 29830254  
 Conc: 3.15 ng/ml

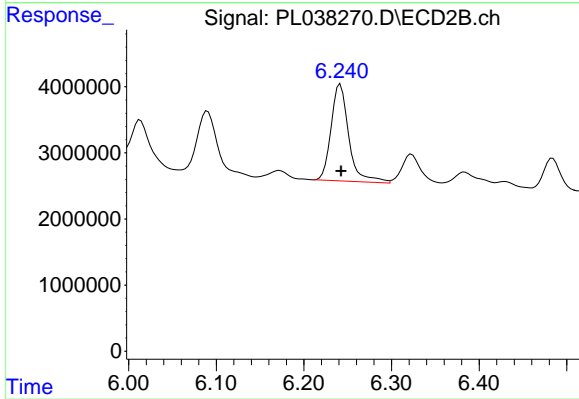
Instrument :  
 ECD\_L  
 ClientSampleId :



#11 alpha-Chlordane  
 R.T.: 6.090 min  
 Delta R.T.: 0.003 min  
 Response: 14317335  
 Conc: 5.00 ng/ml

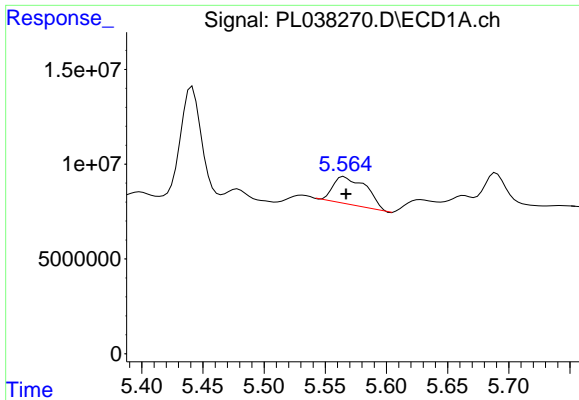


#12 4,4'-DDE  
 R.T.: 5.441 min  
 Delta R.T.: -0.003 min  
 Response: 65249031  
 Conc: 6.81 ng/ml



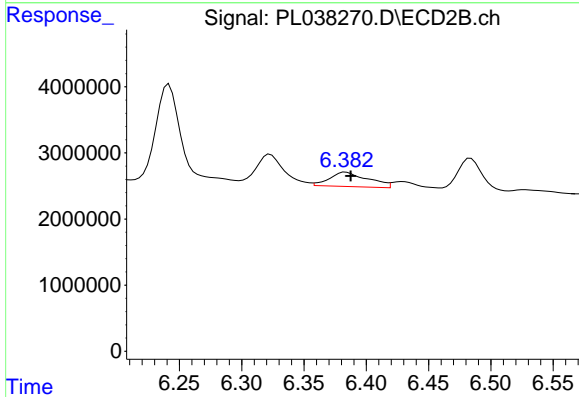
#12 4,4'-DDE  
 R.T.: 6.242 min  
 Delta R.T.: 0.000 min  
 Response: 20633924  
 Conc: 7.72 ng/ml



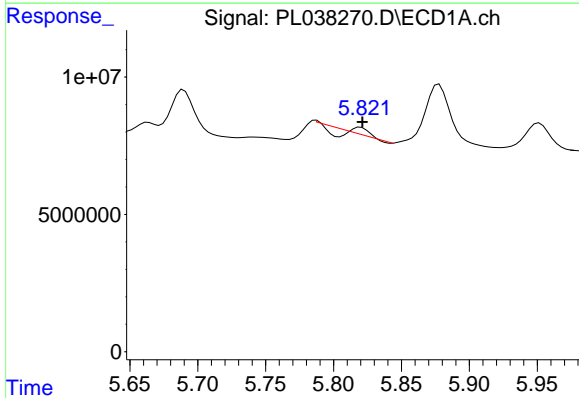


#13 Dieldrin  
 R.T.: 5.565 min  
 Delta R.T.: -0.002 min  
 Response: 27696272  
 Conc: 2.88 ng/ml

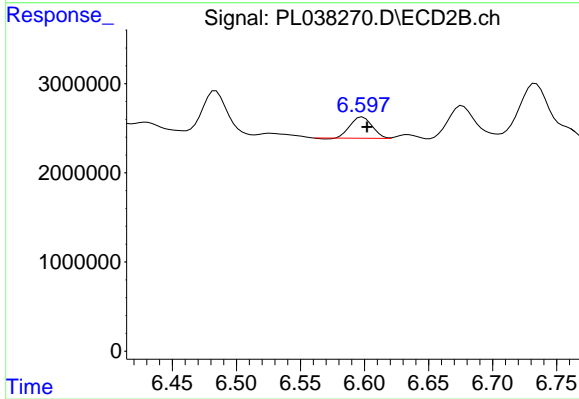
Instrument :  
 ECD\_L  
 ClientSampleId :



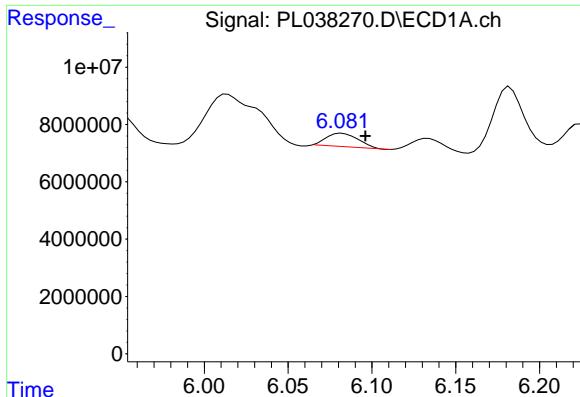
#13 Dieldrin  
 R.T.: 6.384 min  
 Delta R.T.: -0.004 min  
 Response: 4672311  
 Conc: 1.72 ng/ml



#14 Endrin  
 R.T.: 5.820 min  
 Delta R.T.: -0.001 min  
 Response: 222519  
 Conc: 0.03 ng/ml



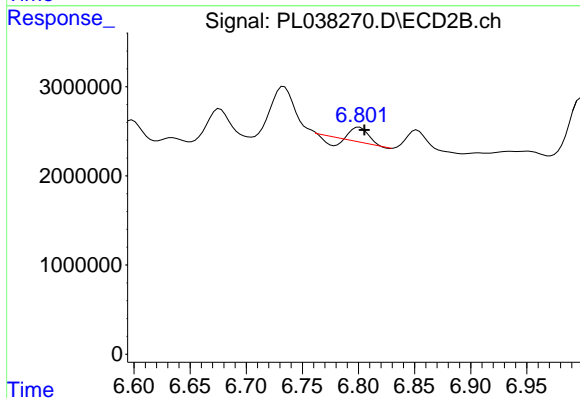
#14 Endrin  
 R.T.: 6.598 min  
 Delta R.T.: -0.003 min  
 Response: 2858308  
 Conc: 1.20 ng/ml



#15 Endosulfan II

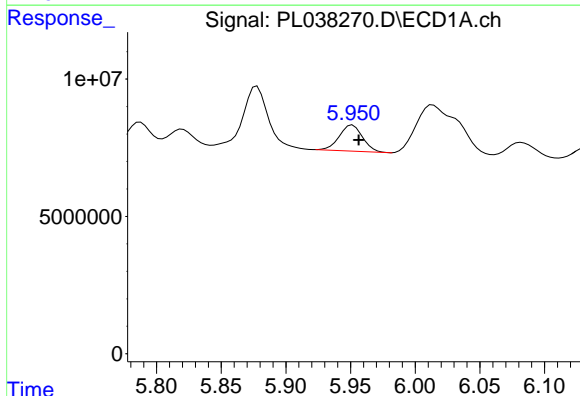
R.T.: 6.082 min  
 Delta R.T.: -0.014 min  
 Response: 6171261  
 Conc: 0.78 ng/ml

Instrument :  
 ECD\_L  
 ClientSampled :



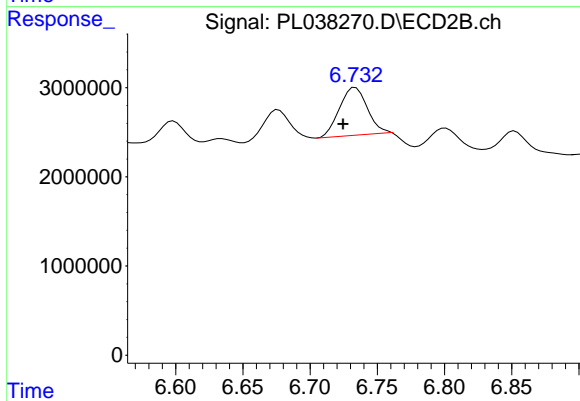
#15 Endosulfan II

R.T.: 6.801 min  
 Delta R.T.: -0.004 min  
 Response: 1203589  
 Conc: 0.50 ng/ml



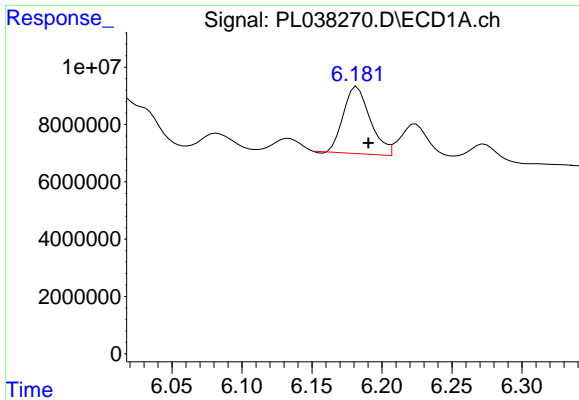
#16 4,4'-DDD

R.T.: 5.952 min  
 Delta R.T.: -0.005 min  
 Response: 11882807  
 Conc: 1.62 ng/ml



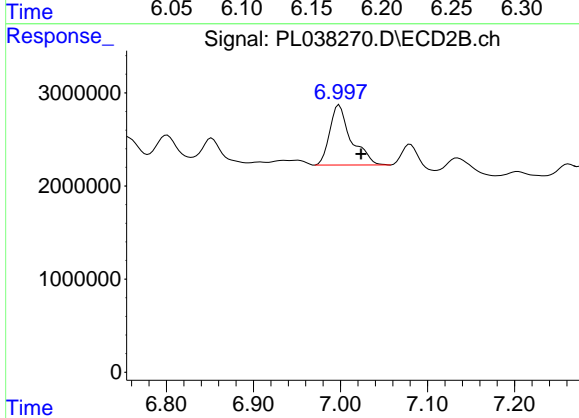
#16 4,4'-DDD

R.T.: 6.734 min  
 Delta R.T.: 0.009 min  
 Response: 7760759  
 Conc: 3.63 ng/ml

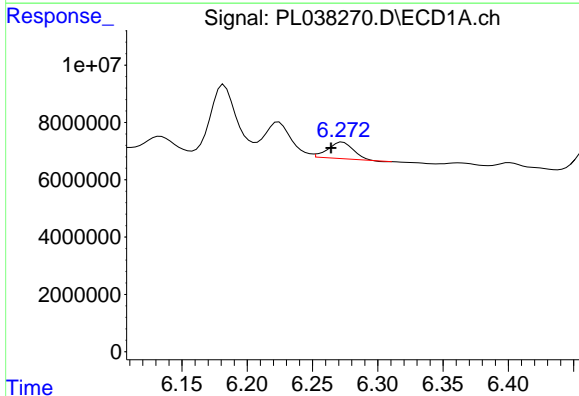


#17 4,4'-DDT  
 R.T.: 6.182 min  
 Delta R.T.: -0.008 min  
 Response: 31145734  
 Conc: 4.19 ng/ml

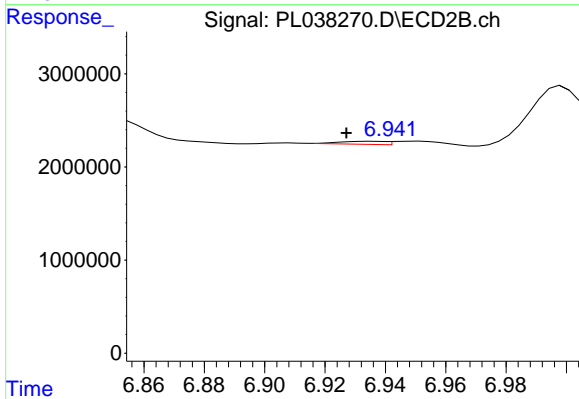
Instrument :  
 ECD\_L  
 ClientSampled :



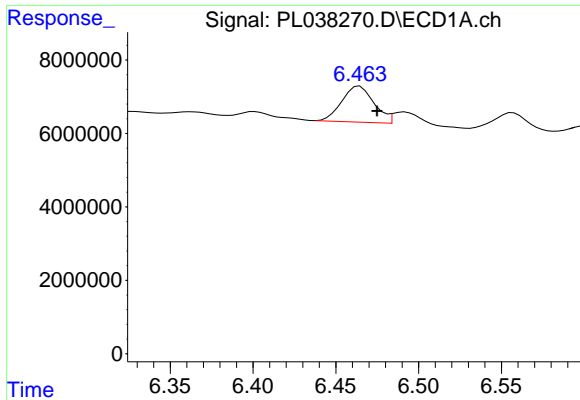
#17 4,4'-DDT  
 R.T.: 6.999 min  
 Delta R.T.: -0.025 min  
 Response: 10999203  
 Conc: 5.16 ng/ml



#18 Endrin aldehyde  
 R.T.: 6.273 min  
 Delta R.T.: 0.009 min  
 Response: 7450737  
 Conc: 1.17 ng/ml

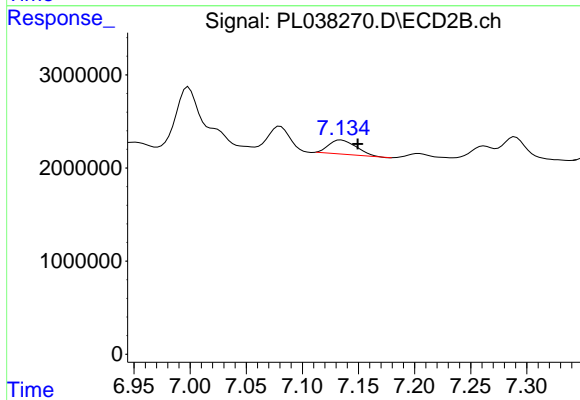


#18 Endrin aldehyde  
 R.T.: 6.936 min  
 Delta R.T.: 0.009 min  
 Response: 350370  
 Conc: 0.18 ng/ml

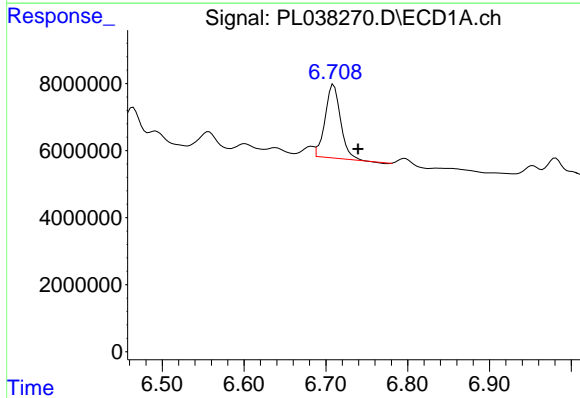


#19 Endosulfan Sulfate  
 R.T.: 6.464 min  
 Delta R.T.: -0.011 min  
 Response: 13248549  
 Conc: 1.75 ng/ml

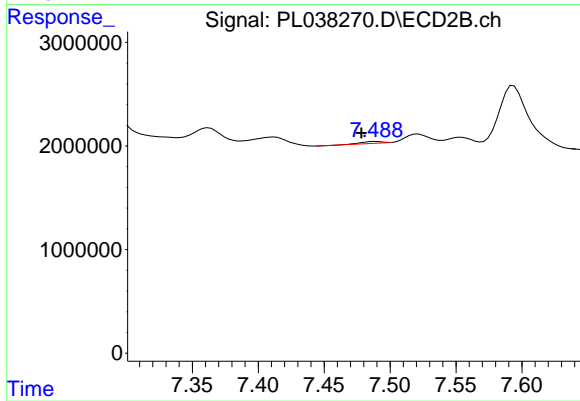
Instrument :  
 ECD\_L  
 ClientSampled :



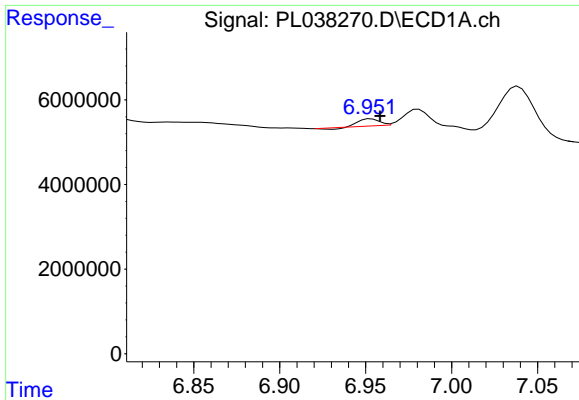
#19 Endosulfan Sulfate  
 R.T.: 7.134 min  
 Delta R.T.: -0.015 min  
 Response: 2607034  
 Conc: 1.20 ng/ml



#20 Methoxychlor  
 R.T.: 6.710 min  
 Delta R.T.: -0.030 min  
 Response: 28328519  
 Conc: 7.36 ng/ml

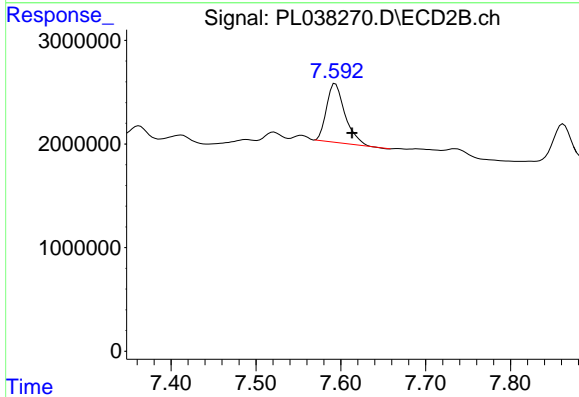


#20 Methoxychlor  
 R.T.: 7.489 min  
 Delta R.T.: 0.011 min  
 Response: 157439  
 Conc: 0.14 ng/ml

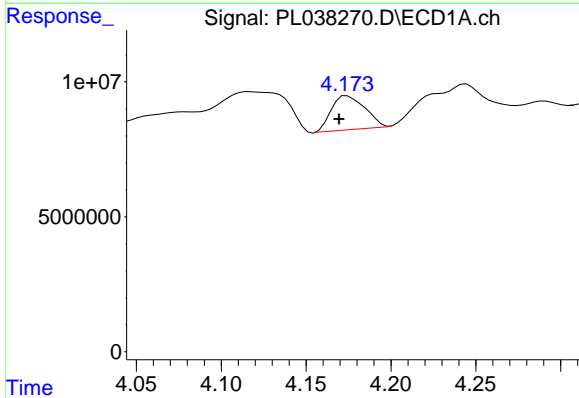


#21 Endrin ketone  
 R.T.: 6.953 min  
 Delta R.T.: -0.005 min  
 Response: 1214209  
 Conc: 0.15 ng/ml

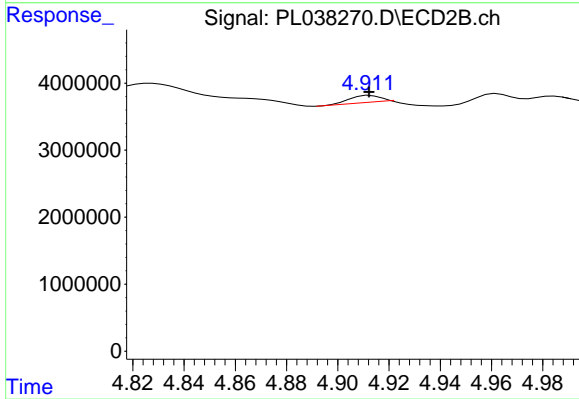
Instrument :  
 ECD\_L  
 ClientSampleId :



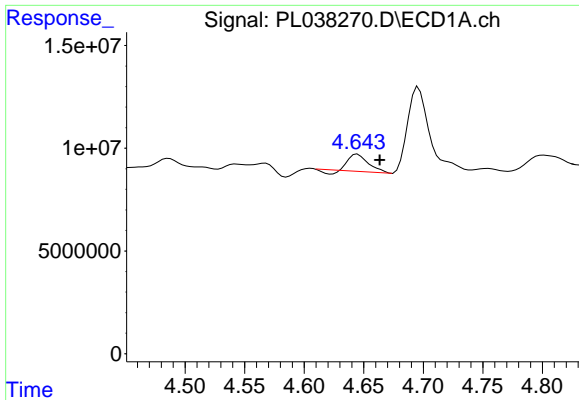
#21 Endrin ketone  
 R.T.: 7.594 min  
 Delta R.T.: -0.020 min  
 Response: 8594007  
 Conc: 3.61 ng/ml



#23 Chlordane-1  
 R.T.: 4.174 min  
 Delta R.T.: 0.005 min  
 Response: 17321663  
 Conc: 50.03 ng/ml

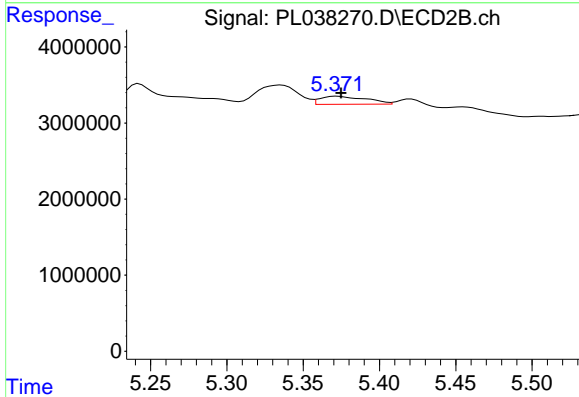


#23 Chlordane-1  
 R.T.: 4.913 min  
 Delta R.T.: 0.000 min  
 Response: 875278  
 Conc: 7.55 ng/ml

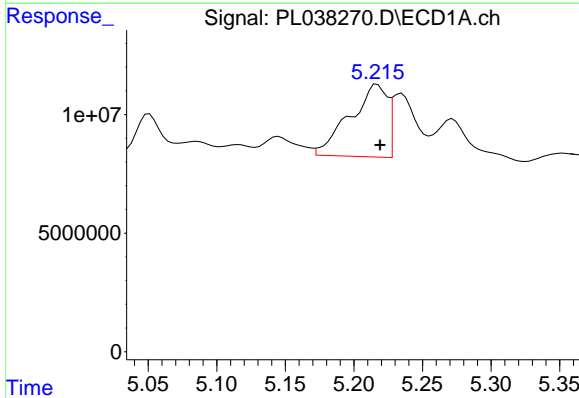


#24 Chlordane-2  
 R.T.: 4.645 min  
 Delta R.T.: -0.018 min  
 Response: 8536726  
 Conc: 23.06 ng/ml

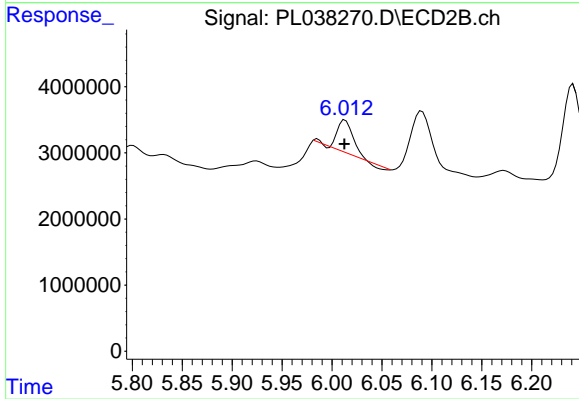
Instrument :  
 ECD\_L  
 ClientSampled :



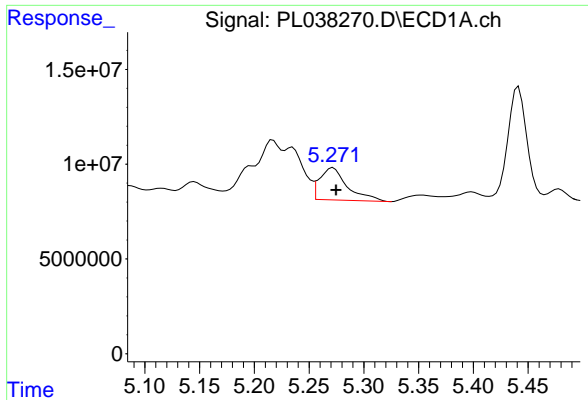
#24 Chlordane-2  
 R.T.: 5.372 min  
 Delta R.T.: -0.003 min  
 Response: 2230951  
 Conc: 18.63 ng/ml



#25 Chlordane-3  
 R.T.: 5.217 min  
 Delta R.T.: -0.002 min  
 Response: 57866467  
 Conc: 49.74 ng/ml

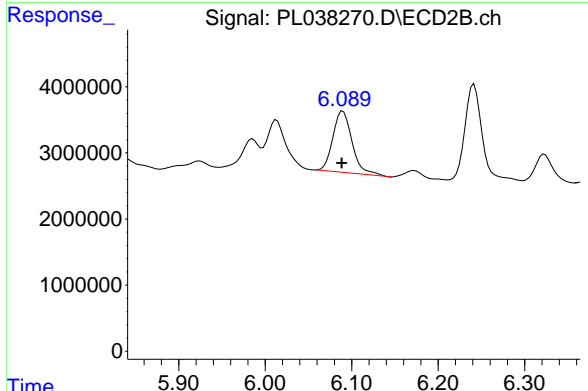


#25 Chlordane-3  
 R.T.: 6.013 min  
 Delta R.T.: 0.000 min  
 Response: 5254643  
 Conc: 12.88 ng/ml

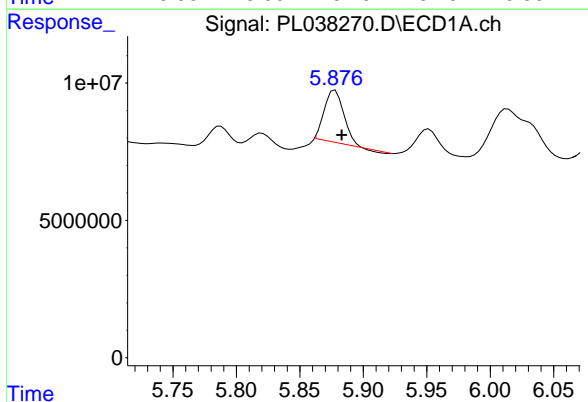


#26 Chlordane-4  
 R.T.: 5.272 min  
 Delta R.T.: -0.003 min  
 Response: 29830254  
 Conc: 28.37 ng/ml

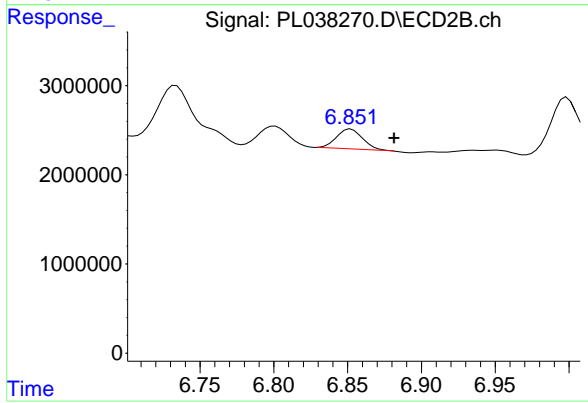
Instrument :  
 ECD\_L  
 ClientSampled :



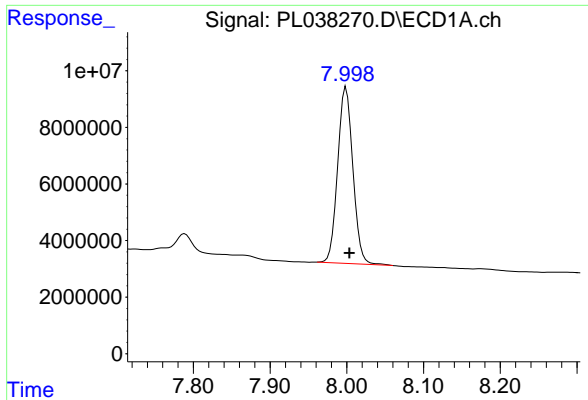
#26 Chlordane-4  
 R.T.: 6.090 min  
 Delta R.T.: 0.001 min  
 Response: 14317335  
 Conc: 29.14 ng/ml



#27 Chlordane-5  
 R.T.: 5.878 min  
 Delta R.T.: -0.005 min  
 Response: 20030565  
 Conc: 125.09 ng/ml



#27 Chlordane-5  
 R.T.: 6.852 min  
 Delta R.T.: -0.029 min  
 Response: 2575443  
 Conc: 28.75 ng/ml



#28 Decachlorobiphenyl

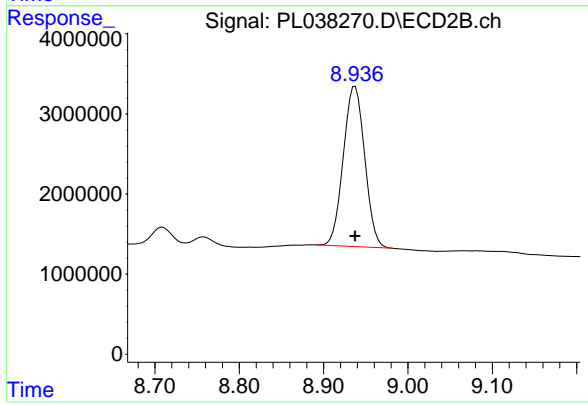
R.T.: 7.999 min

Delta R.T.: -0.004 min

Response: 85875543

Conc: 11.32 ng/ml

Instrument :  
ECD\_L  
ClientSampleId :



#28 Decachlorobiphenyl

R.T.: 8.937 min

Delta R.T.: 0.000 min

Response: 35222801

Conc: 14.41 ng/ml