

Data Path : Z:\pestpcbsrv\HPCHEM1\ECD\_L\Data\PL071822\  
 Data File : PL076500.D  
 Signal(s) : Signal #1: ECD1A.ch Signal #2: ECD2B.ch  
 Acq On : 18 Jul 2022 22:52  
 Operator : AR\AJ  
 Sample : N3747-01MS 10X  
 Misc :  
 ALS Vial : 16 Sample Multiplier: 1

Instrument :  
 ECD\_L  
 ClientSampleId :

Integration File signal 1: autoint1.e  
 Integration File signal 2: autoint2.e  
 Quant Time: Jul 19 00:18:24 2022  
 Quant Method : Z:\pestpcbsrv\HPCHEM1\ECD\_L\methods\PL070822.M  
 Quant Title : GC Extractables  
 QLast Update : Fri Jul 08 16:50:17 2022  
 Response via : Initial Calibration  
 Integrator: ChemStation

Volume Inj. : 1 µl  
 Signal #1 Phase : ZB-MR2 Signal #2 Phase: ZB-MR1  
 Signal #1 Info : 30M x 0.32mm x0.2 Signal #2 Info : 30M x 0.32mm x0.5µm

Compound	RT#1	RT#2	Resp#1	Resp#2	ng/ml	ng/ml
System Monitoring Compounds						
1) SA Tetrachlo...	0.000	4.620	0	4290054	N.D.	2.122 #
28) SA Decachlor...	0.000	10.354	0	3184293	N.D.	1.898 #
Target Compounds						
2) A alpha-BHC	6.220	5.321	3831056	14915686	4.088	5.438 #
3) MA gamma-BHC...	6.617	5.740	4010125	11030534	4.576	4.482
4) MA Heptachlor	7.272	6.147	6818516	11772823	7.864	4.853 #
5) MB Aldrin	7.644	6.470	3716053	20866792	4.783	9.626 #
6) B beta-BHC	6.871	6.121	1830422	5577526	4.164	5.100
7) B delta-BHC	7.139	6.380	4326446	12831318	6.461	5.362
8) B Heptachlo...	8.112	7.043	4320846	9446339	5.550	4.793
9) A Endosulfan I	8.520	7.445	3323319	8499545	4.920	4.609
10) B gamma-Chl...	8.382	7.319	4796252	10093944	6.600	5.062
11) B alpha-Chl...	8.464	7.388	3900205	10047226	5.389	4.997
12) B 4,4'-DDE	8.649	7.600	4339106	10696223	6.999	5.820
13) MA Dieldrin	8.810	7.730	3318288	10909836	4.912	5.767
14) MA Endrin	9.051	8.019	3033472	7594439	5.272	5.253
15) B Endosulfa...	9.286	8.329	3067664	6616880	5.135	4.281
16) A 4,4'-DDD	9.191	8.183	2834796	6748173	5.426	4.654
17) MA 4,4'-DDT	9.510	8.443	5122695	12164281	8.623	7.780
18) B Endrin al...	9.419	8.517	2462525	5499114	5.102	4.388
19) B Endosulfa...	9.658	8.747	3045828	7604814	5.102	4.782
20) A Methoxychlor	9.996	9.035	1789288	3669319	5.339	4.301
21) B Endrin ke...	10.160	9.264	3264814	7338537	4.829	4.361
22) Mirex	10.632	9.449	3102640	5093343	6.067	3.851 #
24) Chlordane-2	7.644f	6.620	3716053	9028060	149.905	139.153
25) Chlordane-3	8.382	7.319	4796252	10093944	55.720	59.604
26) Chlordane-4	8.464	7.388	3900205	10047226	36.530	54.480 #
27) Chlordane-5	0.000	8.128f	0	847527	N.D.	16.615 #

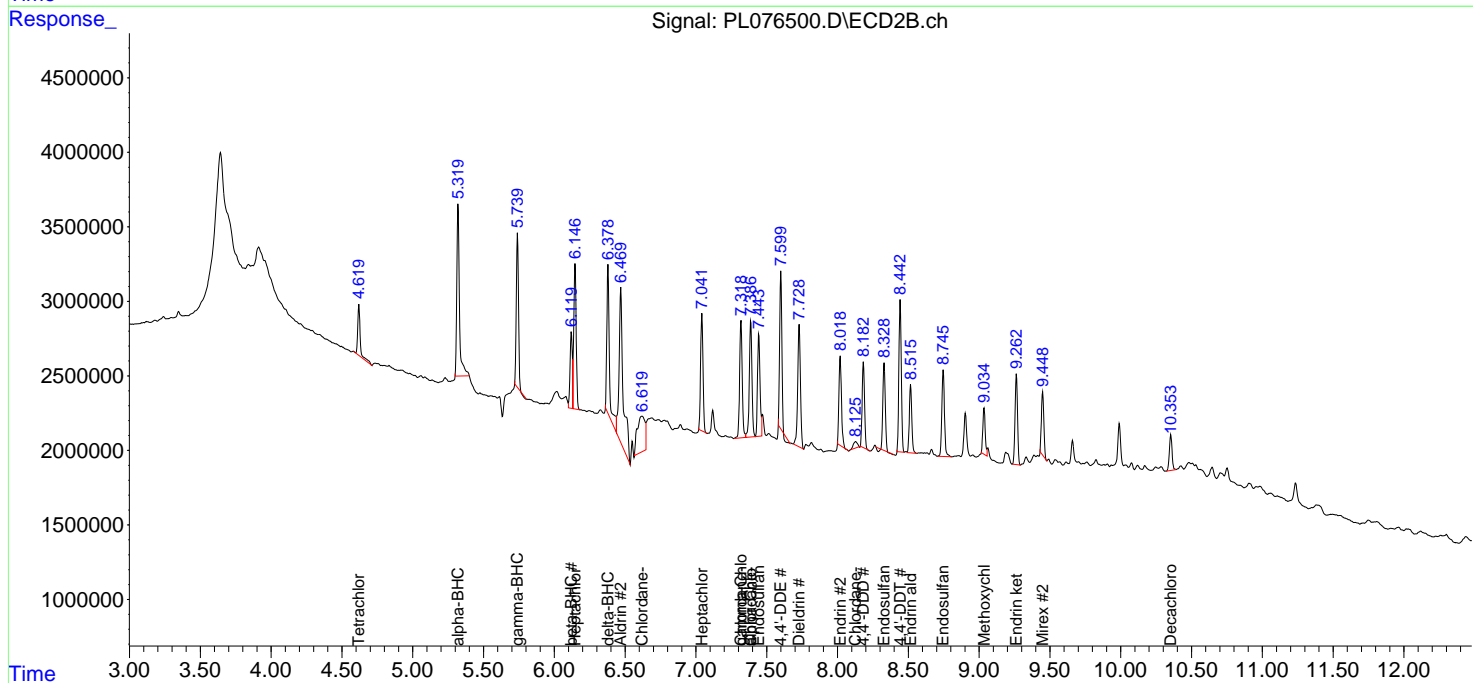
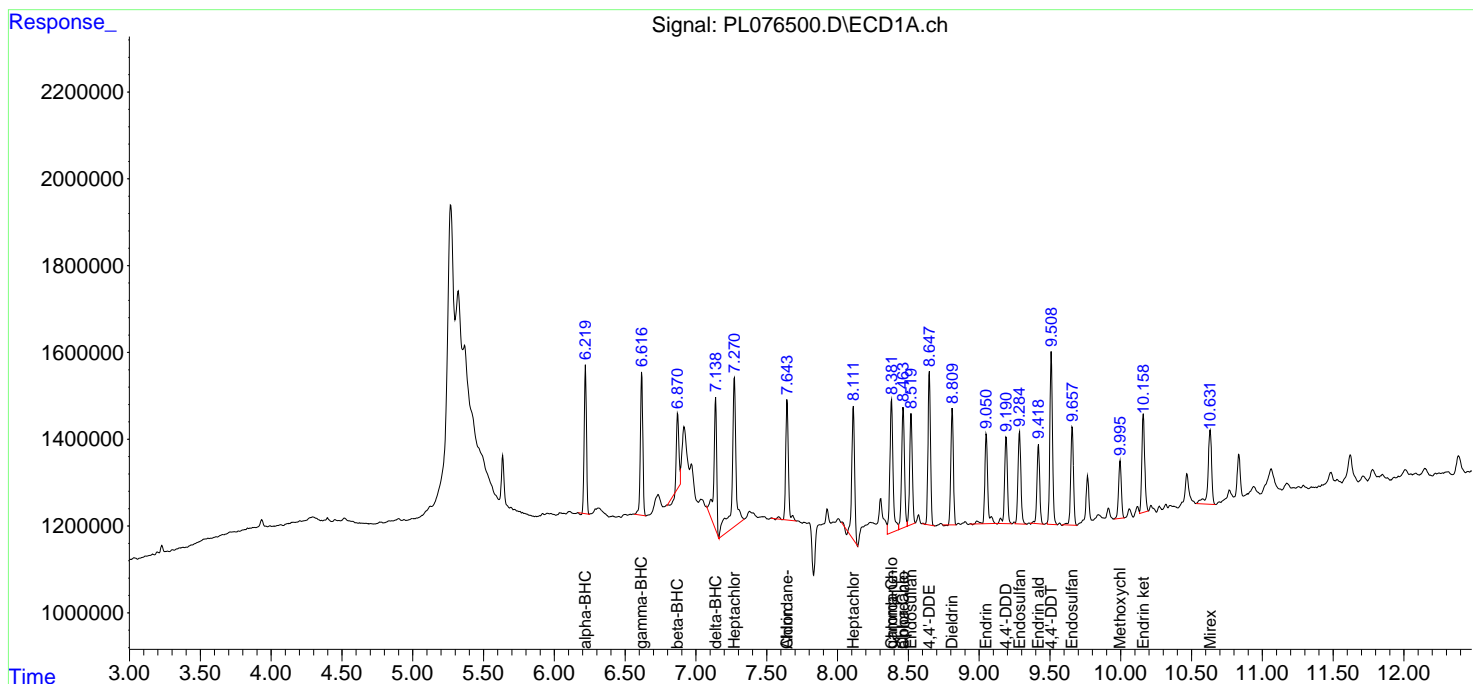
(f)=RT Delta > 1/2 Window (#)=Amounts differ by > 25% (m)=manual int.

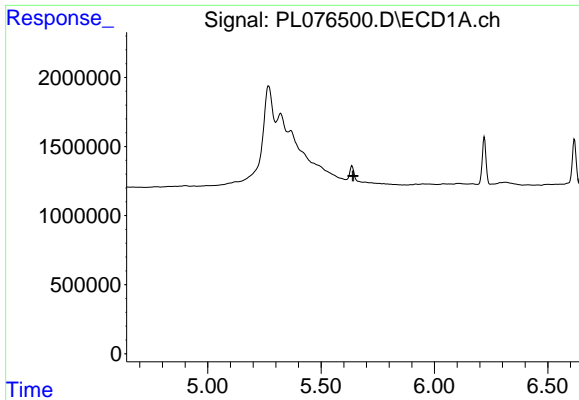
Data Path : Z:\pestpcbsrv\HPCHEM1\ECD\_L\Data\PL071822\  
 Data File : PL076500.D  
 Signal(s) : Signal #1: ECD1A.ch Signal #2: ECD2B.ch  
 Acq On : 18 Jul 2022 22:52  
 Operator : AR\AJ  
 Sample : N3747-01MS 10X  
 Misc :  
 ALS Vial : 16 Sample Multiplier: 1

Instrument :  
 ECD\_L  
 ClientSampleId :

Integration File signal 1: autoint1.e  
 Integration File signal 2: autoint2.e  
 Quant Time: Jul 19 00:18:24 2022  
 Quant Method : Z:\pestpcbsrv\HPCHEM1\ECD\_L\methods\PL070822.M  
 Quant Title : GC Extractables  
 QLast Update : Fri Jul 08 16:50:17 2022  
 Response via : Initial Calibration  
 Integrator: ChemStation

Volume Inj. : 1 µl  
 Signal #1 Phase : ZB-MR2 Signal #2 Phase: ZB-MR1  
 Signal #1 Info : 30M x 0.32mm x0.2 Signal #2 Info : 30M x 0.32mm x0.5µm

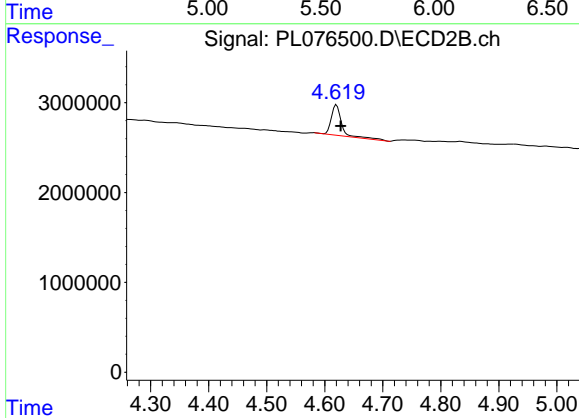




#1 Tetrachloro-m-xylene

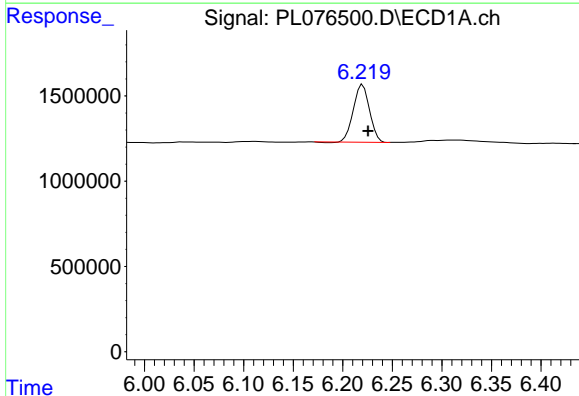
R.T.: 0.000 min  
 Exp R.T.: 5.641 min  
 Response: 0  
 Conc: N.D.

Instrument :  
 ECD\_L  
 ClientSampleId :



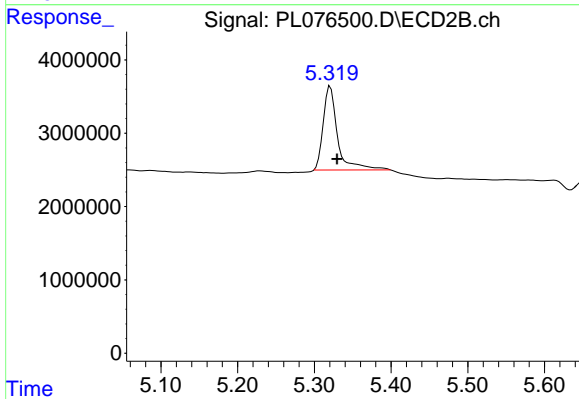
#1 Tetrachloro-m-xylene

R.T.: 4.620 min  
 Delta R.T.: -0.008 min  
 Response: 4290054  
 Conc: 2.12 ng/ml



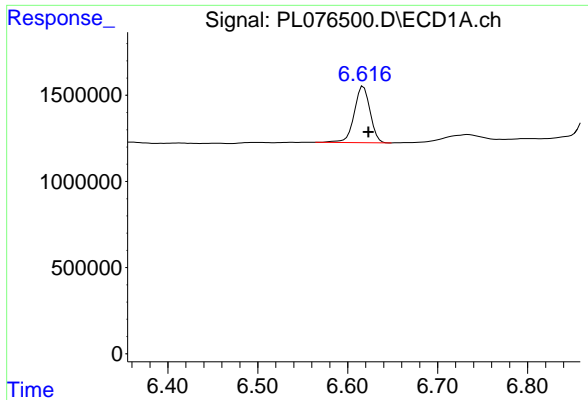
#2 alpha-BHC

R.T.: 6.220 min  
 Delta R.T.: -0.005 min  
 Response: 3831056  
 Conc: 4.09 ng/ml



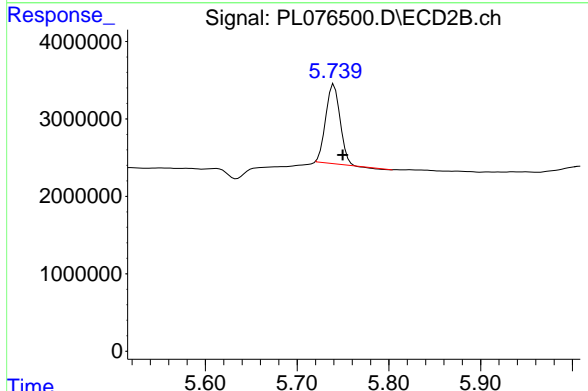
#2 alpha-BHC

R.T.: 5.321 min  
 Delta R.T.: -0.009 min  
 Response: 14915686  
 Conc: 5.44 ng/ml

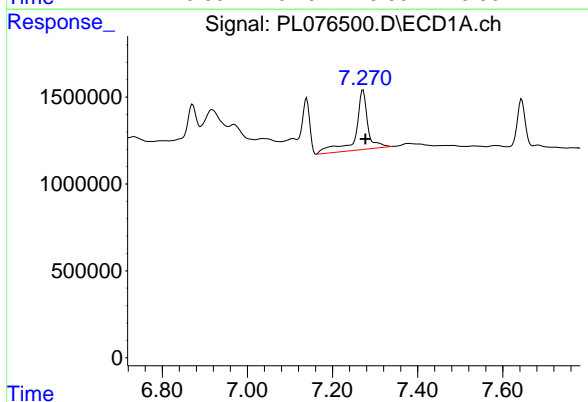


#3 gamma-BHC (Lindane)  
 R.T.: 6.617 min  
 Delta R.T.: -0.006 min  
 Response: 4010125  
 Conc: 4.58 ng/ml

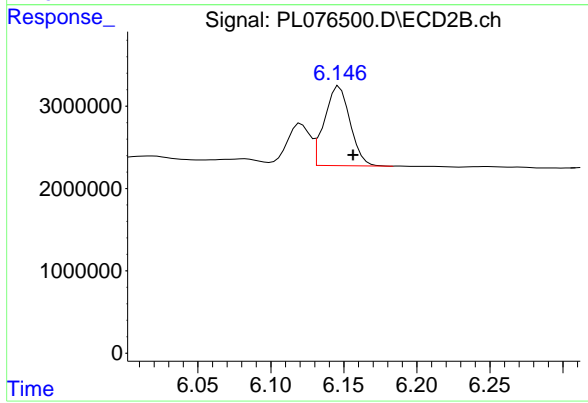
Instrument :  
 ECD\_L  
 ClientSampleId :



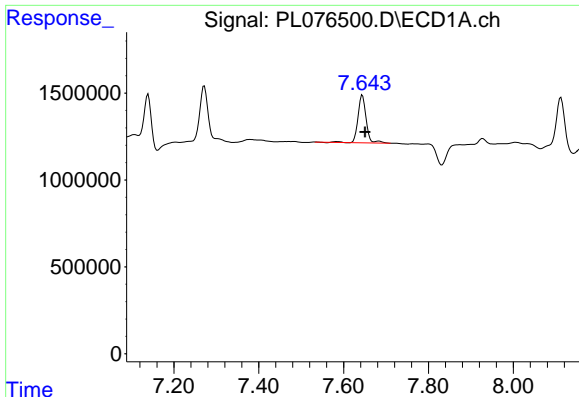
#3 gamma-BHC (Lindane)  
 R.T.: 5.740 min  
 Delta R.T.: -0.010 min  
 Response: 11030534  
 Conc: 4.48 ng/ml



#4 Heptachlor  
 R.T.: 7.272 min  
 Delta R.T.: -0.006 min  
 Response: 6818516  
 Conc: 7.86 ng/ml



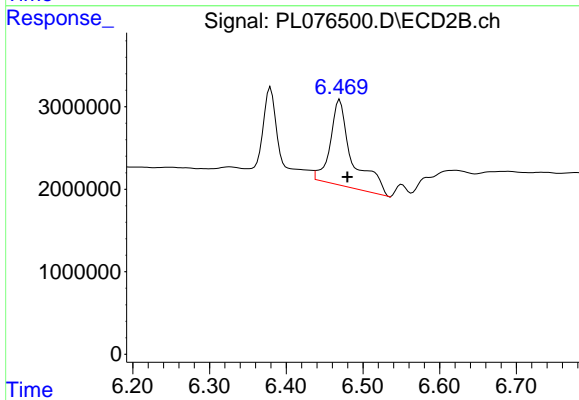
#4 Heptachlor  
 R.T.: 6.147 min  
 Delta R.T.: -0.009 min  
 Response: 11772823  
 Conc: 4.85 ng/ml



#5 Aldrin

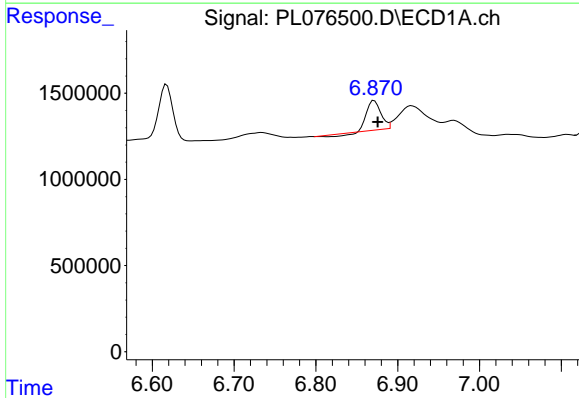
R.T.: 7.644 min  
 Delta R.T.: -0.007 min  
 Response: 3716053  
 Conc: 4.78 ng/ml

Instrument :  
 ECD\_L  
 ClientSampleId :



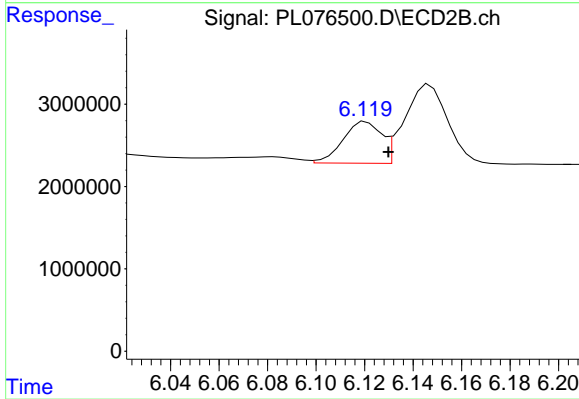
#5 Aldrin

R.T.: 6.470 min  
 Delta R.T.: -0.010 min  
 Response: 20866792  
 Conc: 9.63 ng/ml



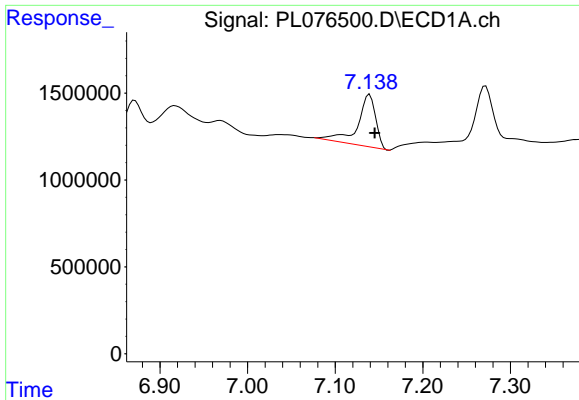
#6 beta-BHC

R.T.: 6.871 min  
 Delta R.T.: -0.004 min  
 Response: 1830422  
 Conc: 4.16 ng/ml



#6 beta-BHC

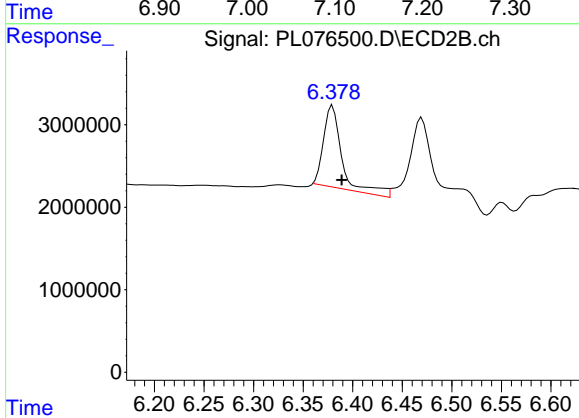
R.T.: 6.121 min  
 Delta R.T.: -0.009 min  
 Response: 5577526  
 Conc: 5.10 ng/ml



#7 delta-BHC

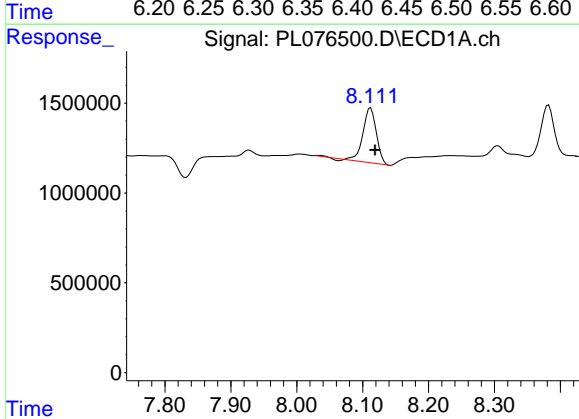
R.T.: 7.139 min  
 Delta R.T.: -0.006 min  
 Response: 4326446  
 Conc: 6.46 ng/ml

Instrument :  
 ECD\_L  
 ClientSampleId :



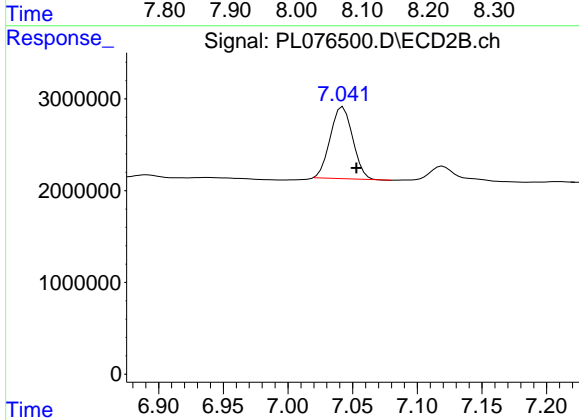
#7 delta-BHC

R.T.: 6.380 min  
 Delta R.T.: -0.009 min  
 Response: 12831318  
 Conc: 5.36 ng/ml



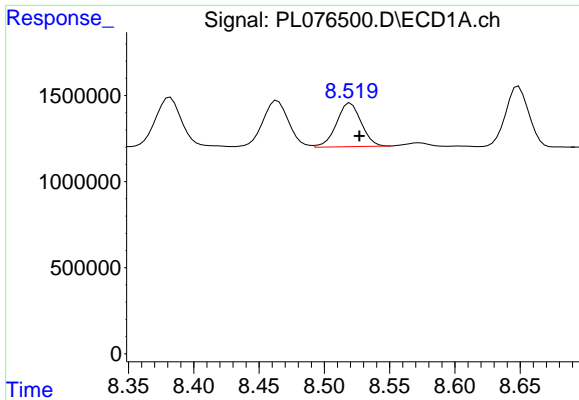
#8 Heptachlor epoxide

R.T.: 8.112 min  
 Delta R.T.: -0.007 min  
 Response: 4320846  
 Conc: 5.55 ng/ml



#8 Heptachlor epoxide

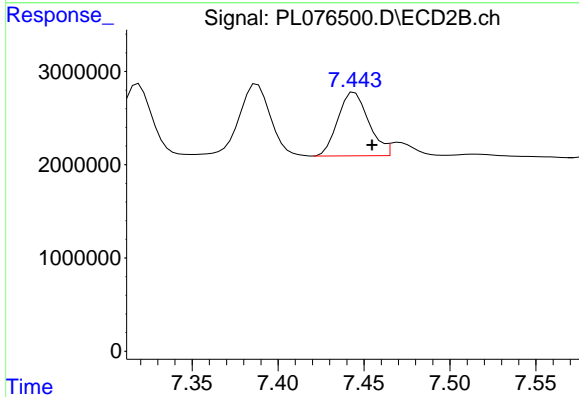
R.T.: 7.043 min  
 Delta R.T.: -0.010 min  
 Response: 9446339  
 Conc: 4.79 ng/ml



#9 Endosulfan I

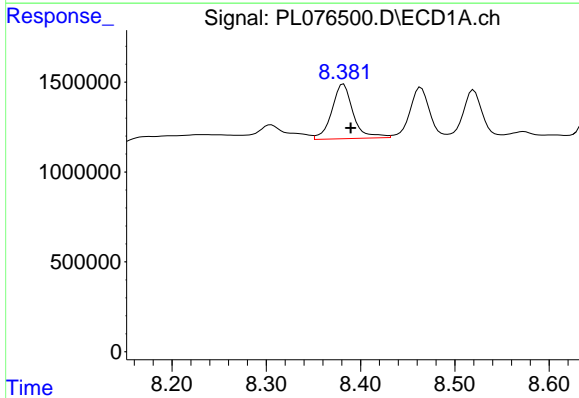
R.T.: 8.520 min  
 Delta R.T.: -0.007 min  
 Response: 3323319  
 Conc: 4.92 ng/ml

Instrument :  
 ECD\_L  
 ClientSampleId :



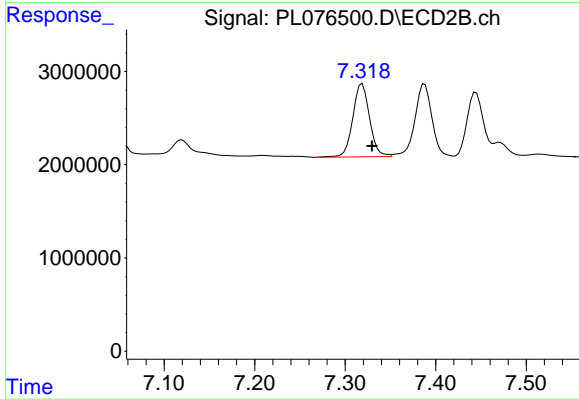
#9 Endosulfan I

R.T.: 7.445 min  
 Delta R.T.: -0.010 min  
 Response: 8499545  
 Conc: 4.61 ng/ml



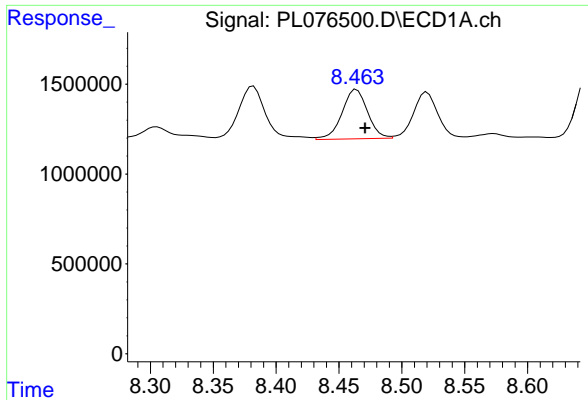
#10 gamma-Chlordane

R.T.: 8.382 min  
 Delta R.T.: -0.008 min  
 Response: 4796252  
 Conc: 6.60 ng/ml



#10 gamma-Chlordane

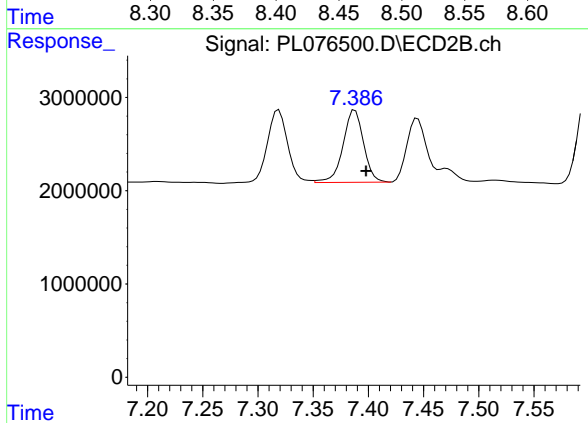
R.T.: 7.319 min  
 Delta R.T.: -0.011 min  
 Response: 10093944  
 Conc: 5.06 ng/ml



#11 alpha-Chlordane

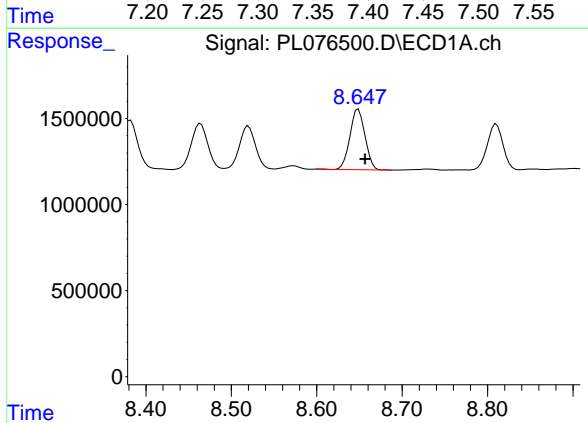
R.T.: 8.464 min  
 Delta R.T.: -0.007 min  
 Response: 3900205  
 Conc: 5.39 ng/ml

Instrument :  
 ECD\_L  
 ClientSampleId :



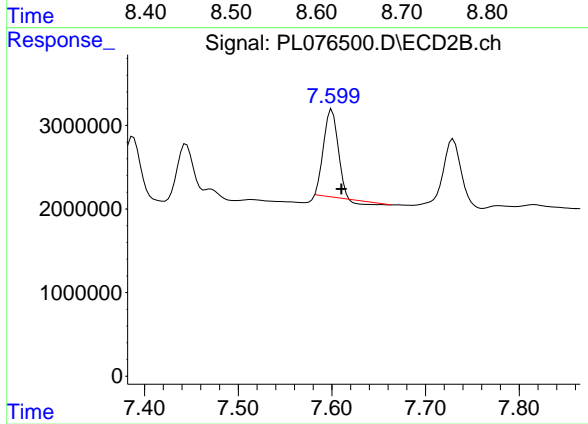
#11 alpha-Chlordane

R.T.: 7.388 min  
 Delta R.T.: -0.010 min  
 Response: 10047226  
 Conc: 5.00 ng/ml



#12 4,4'-DDE

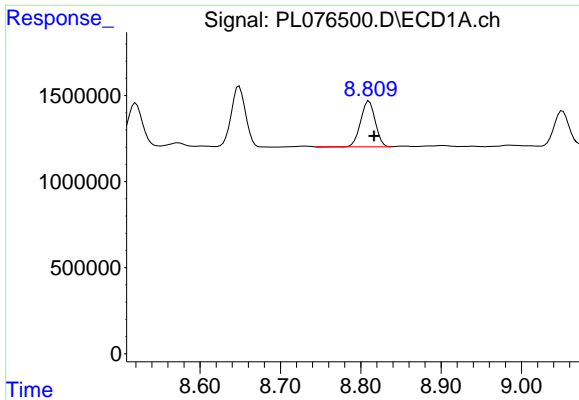
R.T.: 8.649 min  
 Delta R.T.: -0.008 min  
 Response: 4339106  
 Conc: 7.00 ng/ml



#12 4,4'-DDE

R.T.: 7.600 min  
 Delta R.T.: -0.010 min  
 Response: 10696223  
 Conc: 5.82 ng/ml

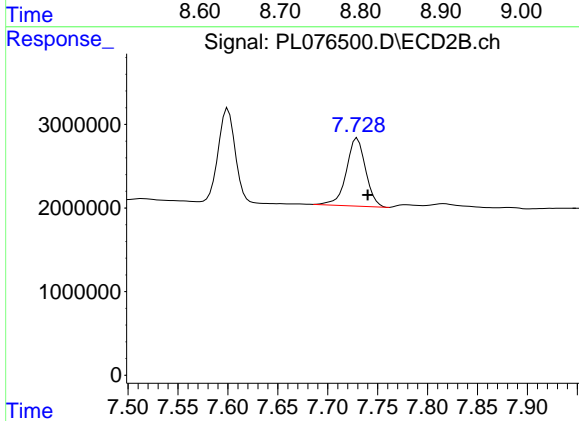




#13 Dieldrin

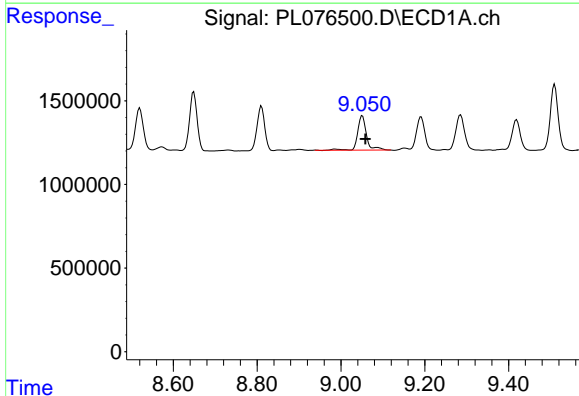
R.T.: 8.810 min  
 Delta R.T.: -0.006 min  
 Response: 3318288  
 Conc: 4.91 ng/ml

Instrument :  
 ECD\_L  
 ClientSampleId :



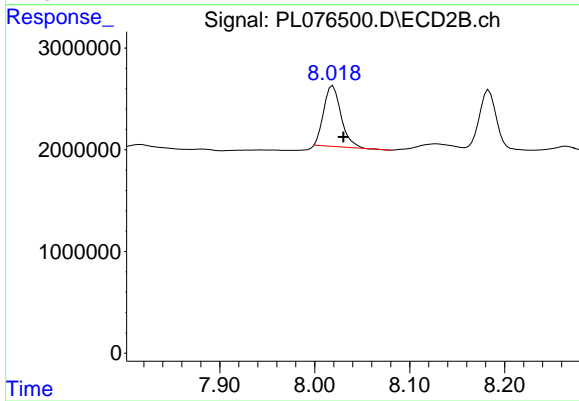
#13 Dieldrin

R.T.: 7.730 min  
 Delta R.T.: -0.010 min  
 Response: 10909836  
 Conc: 5.77 ng/ml



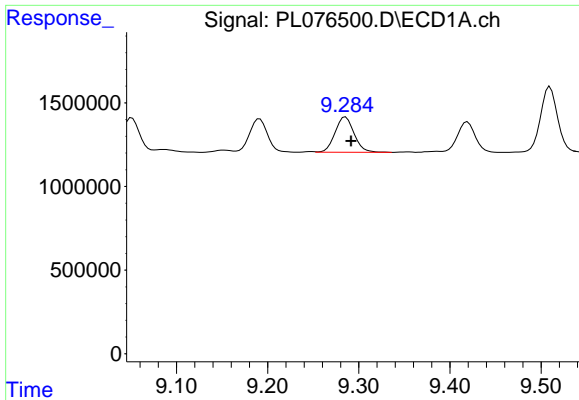
#14 Endrin

R.T.: 9.051 min  
 Delta R.T.: -0.007 min  
 Response: 3033472  
 Conc: 5.27 ng/ml



#14 Endrin

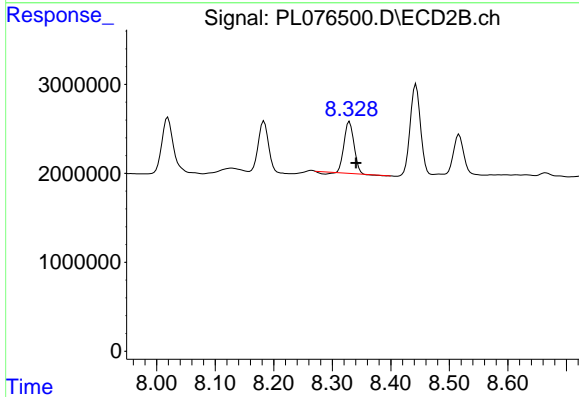
R.T.: 8.019 min  
 Delta R.T.: -0.011 min  
 Response: 7594439  
 Conc: 5.25 ng/ml



#15 Endosulfan II

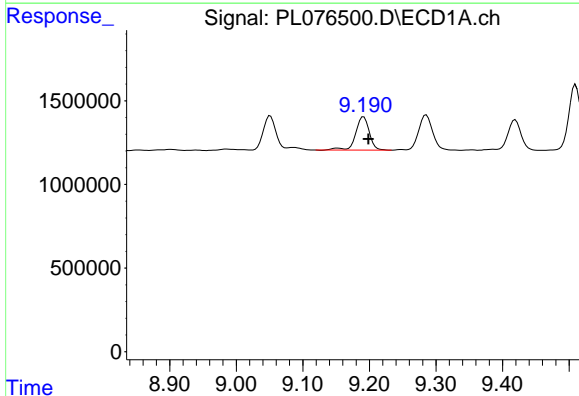
R.T.: 9.286 min  
 Delta R.T.: -0.006 min  
 Response: 3067664  
 Conc: 5.13 ng/ml

Instrument :  
 ECD\_L  
 ClientSampleId :



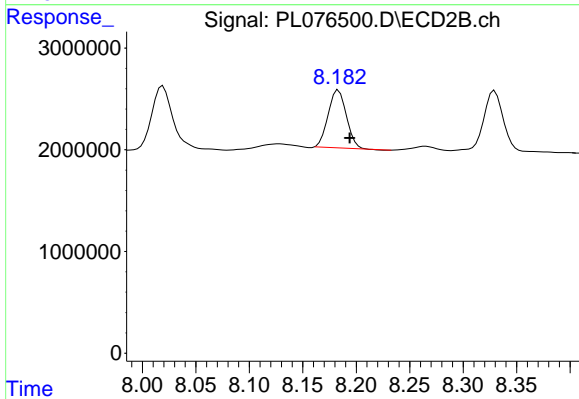
#15 Endosulfan II

R.T.: 8.329 min  
 Delta R.T.: -0.011 min  
 Response: 6616880  
 Conc: 4.28 ng/ml



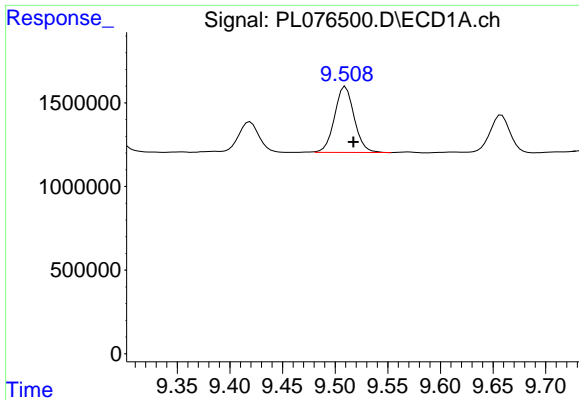
#16 4,4'-DDD

R.T.: 9.191 min  
 Delta R.T.: -0.007 min  
 Response: 2834796  
 Conc: 5.43 ng/ml



#16 4,4'-DDD

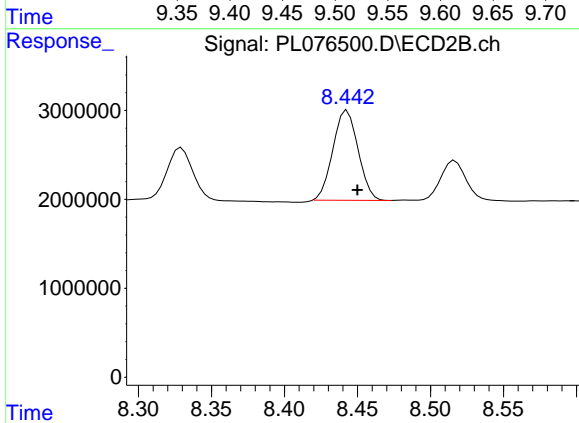
R.T.: 8.183 min  
 Delta R.T.: -0.010 min  
 Response: 6748173  
 Conc: 4.65 ng/ml



#17 4,4'-DDT

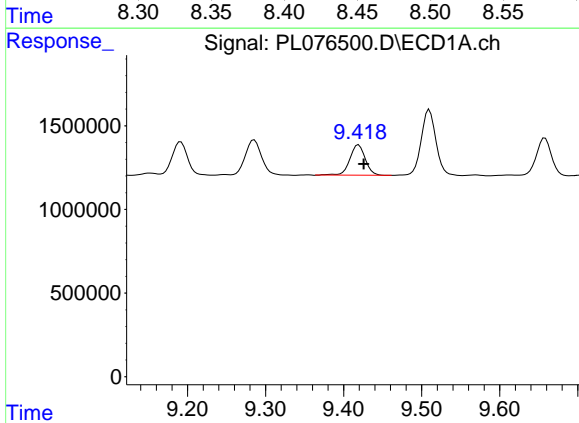
R.T.: 9.510 min  
 Delta R.T.: -0.008 min  
 Response: 5122695  
 Conc: 8.62 ng/ml

Instrument :  
 ECD\_L  
 ClientSampleId :



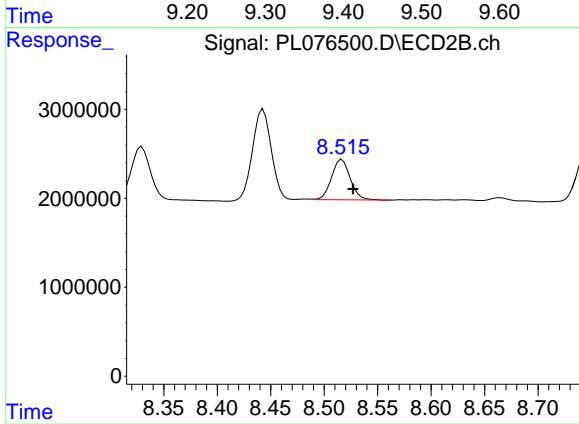
#17 4,4'-DDT

R.T.: 8.443 min  
 Delta R.T.: -0.007 min  
 Response: 12164281  
 Conc: 7.78 ng/ml



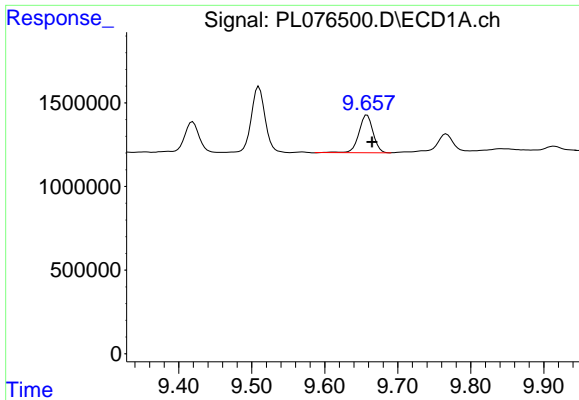
#18 Endrin aldehyde

R.T.: 9.419 min  
 Delta R.T.: -0.007 min  
 Response: 2462525  
 Conc: 5.10 ng/ml



#18 Endrin aldehyde

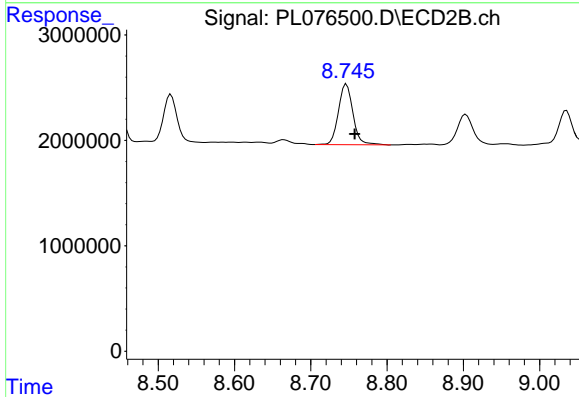
R.T.: 8.517 min  
 Delta R.T.: -0.010 min  
 Response: 5499114  
 Conc: 4.39 ng/ml



#19 Endosulfan Sulfate

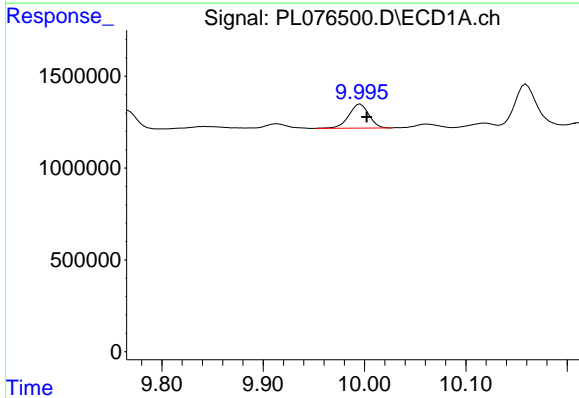
R.T.: 9.658 min  
 Delta R.T.: -0.007 min  
 Response: 3045828  
 Conc: 5.10 ng/ml

Instrument :  
 ECD\_L  
 ClientSampleId :



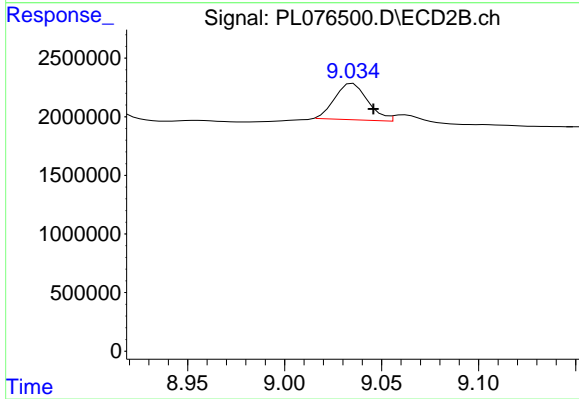
#19 Endosulfan Sulfate

R.T.: 8.747 min  
 Delta R.T.: -0.011 min  
 Response: 7604814  
 Conc: 4.78 ng/ml



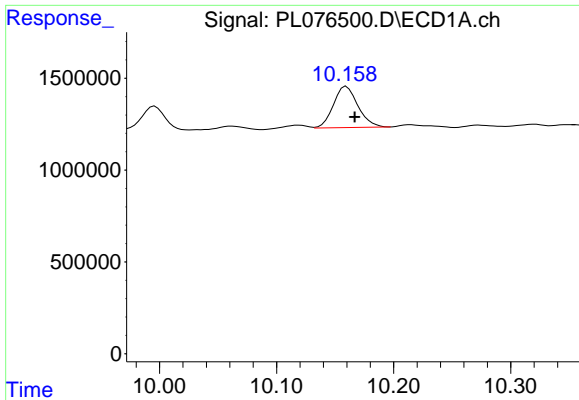
#20 Methoxychlor

R.T.: 9.996 min  
 Delta R.T.: -0.006 min  
 Response: 1789288  
 Conc: 5.34 ng/ml



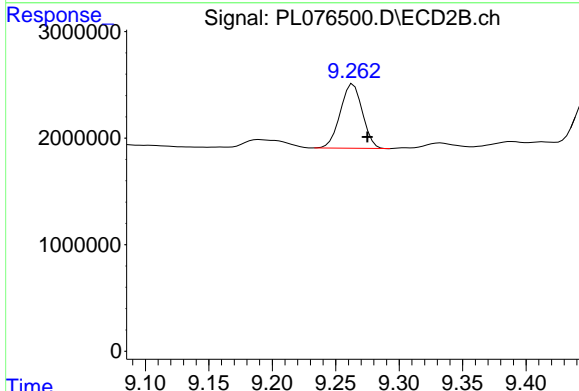
#20 Methoxychlor

R.T.: 9.035 min  
 Delta R.T.: -0.011 min  
 Response: 3669319  
 Conc: 4.30 ng/ml

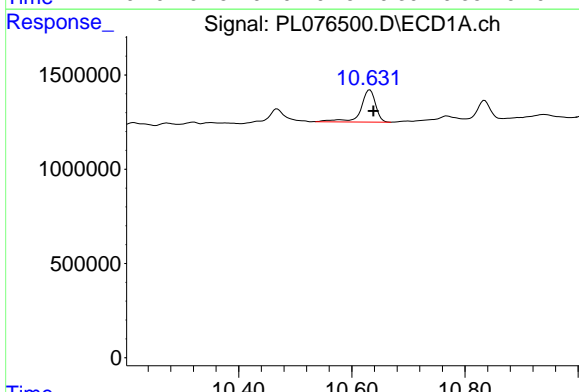


#21 Endrin ketone  
 R.T.: 10.160 min  
 Delta R.T.: -0.007 min  
 Response: 3264814  
 Conc: 4.83 ng/ml

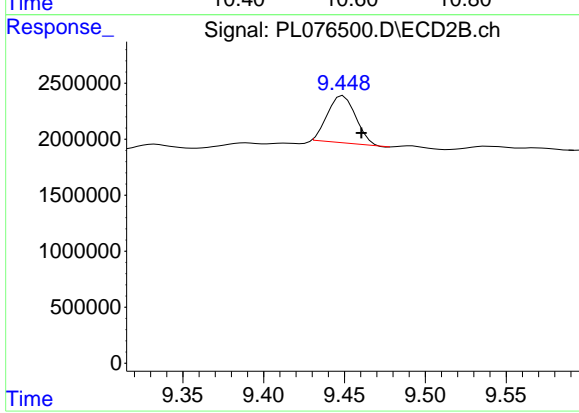
Instrument :  
 ECD\_L  
 ClientSampleId :



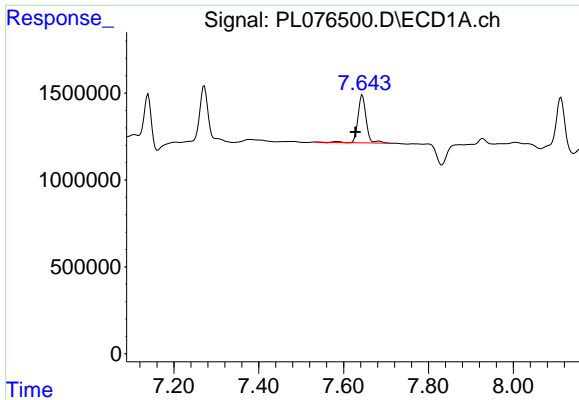
#21 Endrin ketone  
 R.T.: 9.264 min  
 Delta R.T.: -0.011 min  
 Response: 7338537  
 Conc: 4.36 ng/ml



#22 Mirex  
 R.T.: 10.632 min  
 Delta R.T.: -0.006 min  
 Response: 3102640  
 Conc: 6.07 ng/ml



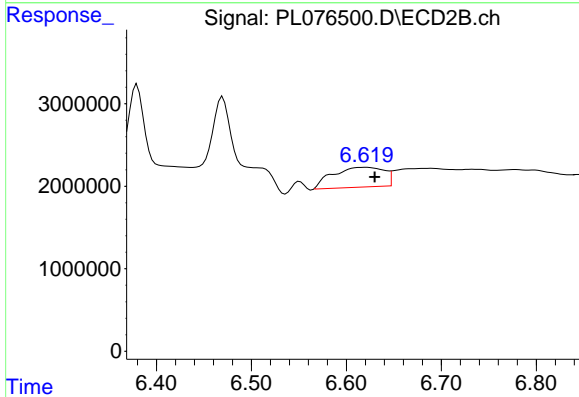
#22 Mirex  
 R.T.: 9.449 min  
 Delta R.T.: -0.011 min  
 Response: 5093343  
 Conc: 3.85 ng/ml



#24 Chlordane-2

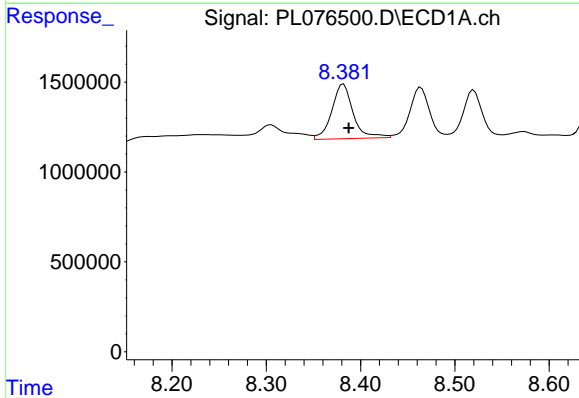
R.T.: 7.644 min  
 Delta R.T.: 0.017 min  
 Response: 3716053  
 Conc: 149.91 ng/ml

Instrument :  
 ECD\_L  
 ClientSampleId :



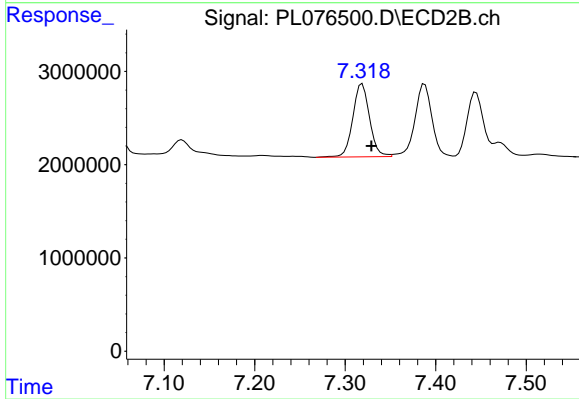
#24 Chlordane-2

R.T.: 6.620 min  
 Delta R.T.: -0.010 min  
 Response: 9028060  
 Conc: 139.15 ng/ml



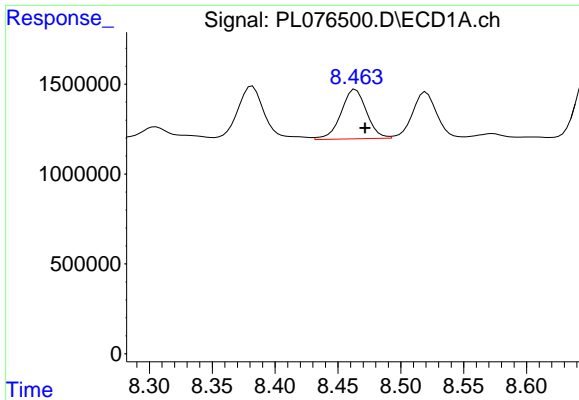
#25 Chlordane-3

R.T.: 8.382 min  
 Delta R.T.: -0.006 min  
 Response: 4796252  
 Conc: 55.72 ng/ml



#25 Chlordane-3

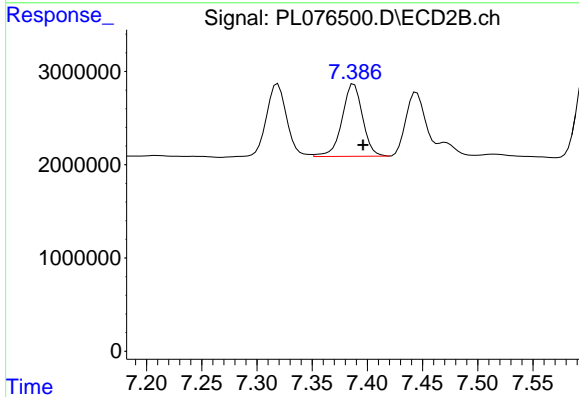
R.T.: 7.319 min  
 Delta R.T.: -0.010 min  
 Response: 10093944  
 Conc: 59.60 ng/ml



#26 Chlordane-4

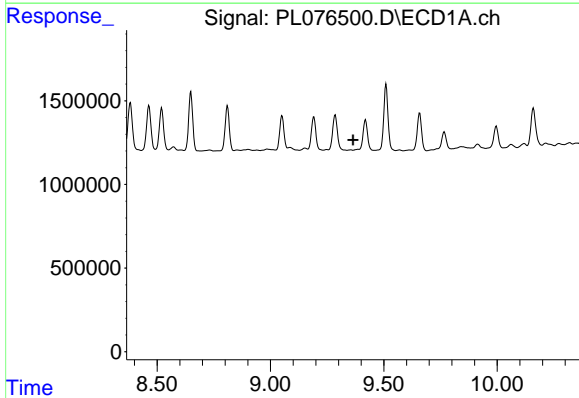
R.T.: 8.464 min  
 Delta R.T.: -0.008 min  
 Response: 3900205  
 Conc: 36.53 ng/ml

Instrument :  
 ECD\_L  
 ClientSampleId :



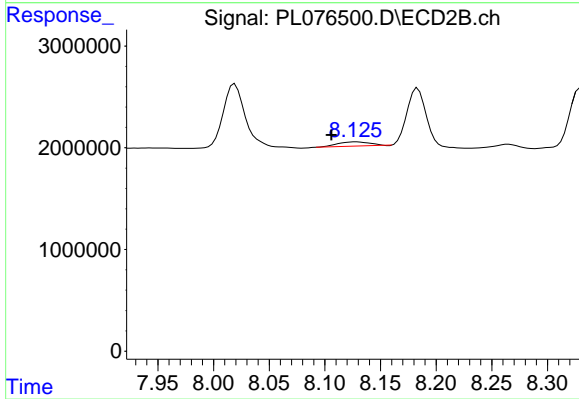
#26 Chlordane-4

R.T.: 7.388 min  
 Delta R.T.: -0.008 min  
 Response: 10047226  
 Conc: 54.48 ng/ml



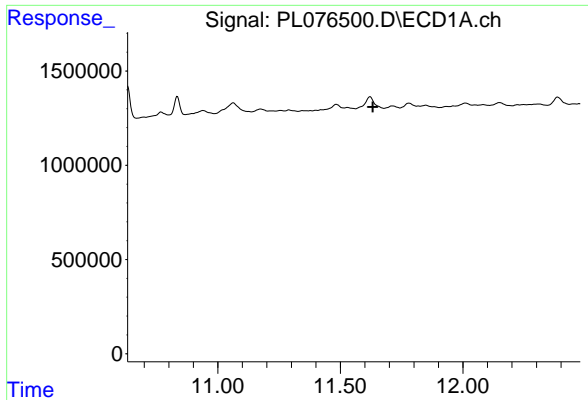
#27 Chlordane-5

R.T.: 0.000 min  
 Exp R.T. : 9.364 min  
 Response: 0  
 Conc: N.D.



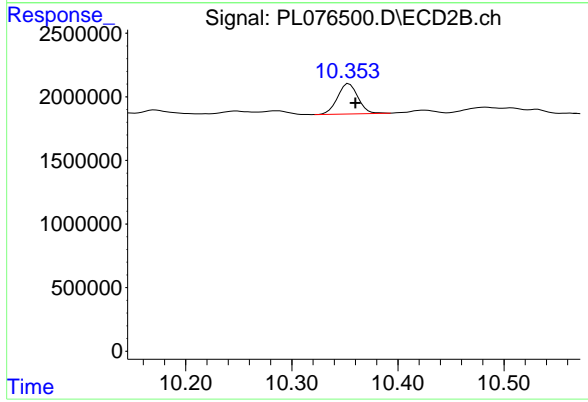
#27 Chlordane-5

R.T.: 8.128 min  
 Delta R.T.: 0.023 min  
 Response: 847527  
 Conc: 16.62 ng/ml



#28 Decachlorobiphenyl  
R.T.: 0.000 min  
Exp R.T.: 11.632 min  
Response: 0  
Conc: N.D.

Instrument :  
ECD\_L  
ClientSampleId :



#28 Decachlorobiphenyl  
R.T.: 10.354 min  
Delta R.T.: -0.006 min  
Response: 3184293  
Conc: 1.90 ng/ml