

Data Path : Z:\pestpcbsrv\HPCHEM1\ECD\_L\Data\PL071924\  
 Data File : PL090596.D  
 Signal(s) : Signal #1: ECD1A.ch Signal #2: ECD2B.ch  
 Acq On : 19 Jul 2024 11:46  
 Operator : AR\AJ  
 Sample : I.BLK  
 Misc :  
 ALS Vial : 2 Sample Multiplier: 1

Instrument :  
 ECD\_L  
 ClientSampleId :

Integration File signal 1: autoint1.e  
 Integration File signal 2: autoint2.e  
 Quant Time: Jul 19 22:02:38 2024  
 Quant Method : Z:\pestpcbsrv\HPCHEM1\ECD\_L\methods\PL071524.M  
 Quant Title : GC Extractables  
 QLast Update : Mon Jul 15 14:16:48 2024  
 Response via : Initial Calibration  
 Integrator: ChemStation

Volume Inj. : 1 µl  
 Signal #1 Phase : ZB-MR2 Signal #2 Phase: ZB-MR1  
 Signal #1 Info : 30M x 0.32mm x0.2 Signal #2 Info : 30M x 0.32mm x0.5µm

	Compound	RT#1	RT#2	Resp#1	Resp#2	ng/ml	ng/ml
-----							
System Monitoring Compounds							
1)	SA Tetrachlo...	3.546	2.789	44768090	35942403	21.500	21.357
28)	SA Decachlor...	9.058	7.932	32134359	34147590	24.182	23.419
Target Compounds							
2)	A alpha-BHC	3.993	3.277f	92938	178236	0.031	0.074 #
3)	MA gamma-BHC...	4.337	3.622	20821	39600	0.007	0.017 #
4)	MA Heptachlor	4.920	3.951	630546	107188	0.248	0.049 #
5)	MB Aldrin	5.263	4.224f	4023373	5777088	1.610	2.715 #
6)	B beta-BHC	4.526	3.924	21473	189862	0.017	0.184 #
7)	B delta-BHC	4.766	4.153	1578865	1702551	0.589	0.774 #
8)	Heptachlo...	5.686	4.754	20140113	48212	8.569	0.025 #
9)	A Endosulfan I	6.081	0.000	3922731	0	1.834	N.D. #
10)	B gamma-Chl...	5.963f	4.988	2419262	355068	1.041	0.175 #
11)	B alpha-Chl...	6.034	5.061	2667806	433332	1.162	0.214 #
12)	B 4,4'-DDE	6.192	5.251	1234964	5673279	0.611	3.175 #
13)	MA Dieldrin	6.347	5.361f	39837	271668	0.018	0.139 #
14)	MA Endrin	6.568	5.674f	5534856	440595	3.011	0.256 #
15)	B Endosulfa...	6.824f	5.950	1373312	95027	0.698	0.056 #
16)	A 4,4'-DDD	6.735f	5.809	1969273	30821	1.166	0.021 #
17)	MA 4,4'-DDT	7.010f	6.060	194699	26875	0.116	0.018 #
18)	B Endrin al...	6.919	6.124	128004	69639	0.086	0.053 #
19)	B Endosulfa...	7.147f	6.351	148266	694270	0.084	0.431 #
21)	B Endrin ke...	7.642	0.000	103275	0	0.054	N.D. #
22)	Mirex	8.126	7.035	330805	107401	0.234	0.072 #
23)	Chlordane-1	4.702	3.805	654377	217526	7.389	3.513 #
24)	Chlordane-2	5.244	4.382	2170102	3117423	21.202	41.104 #
25)	Chlordane-3	5.963	4.988	2419262	355068	7.308	1.718 #
26)	Chlordane-4	6.034	5.061	2667806	433332	6.698	2.214 #
27)	Chlordane-5	6.873	5.747f	31198	531937	0.451	8.825 #

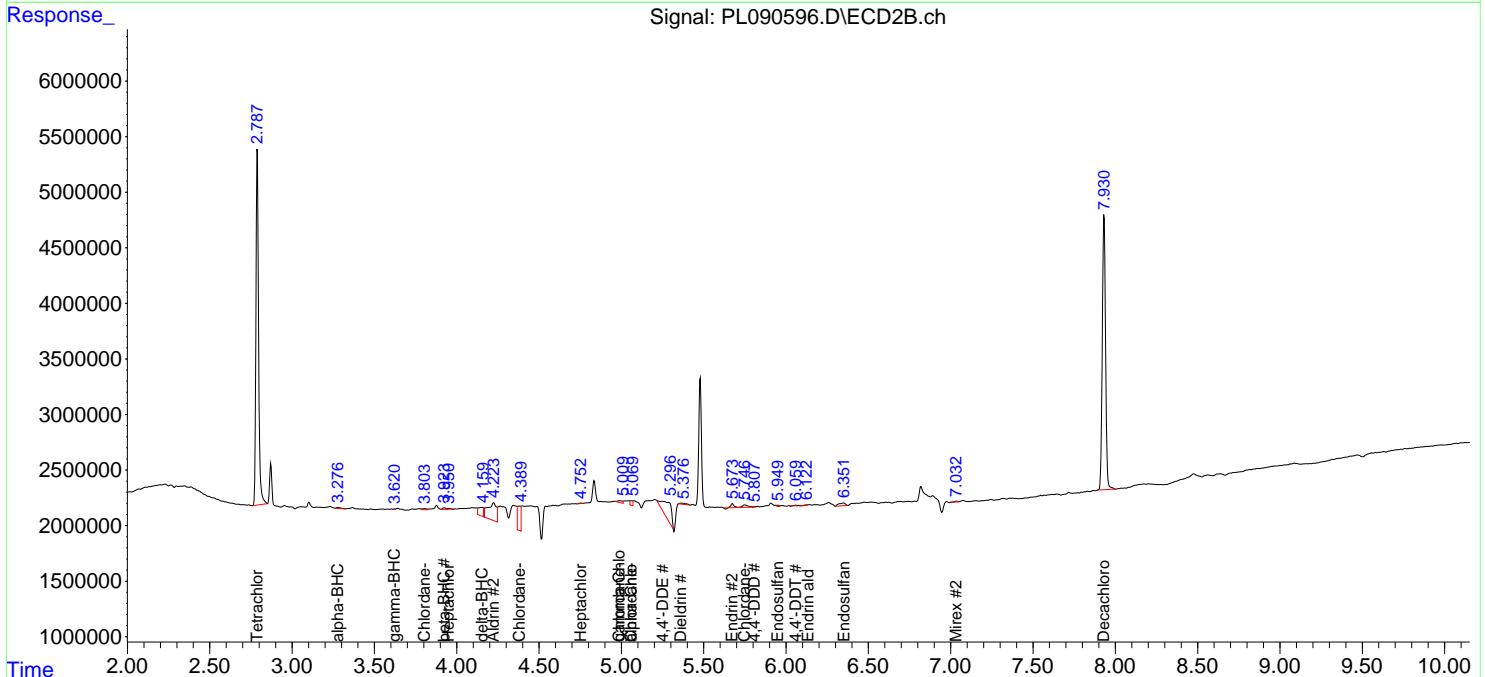
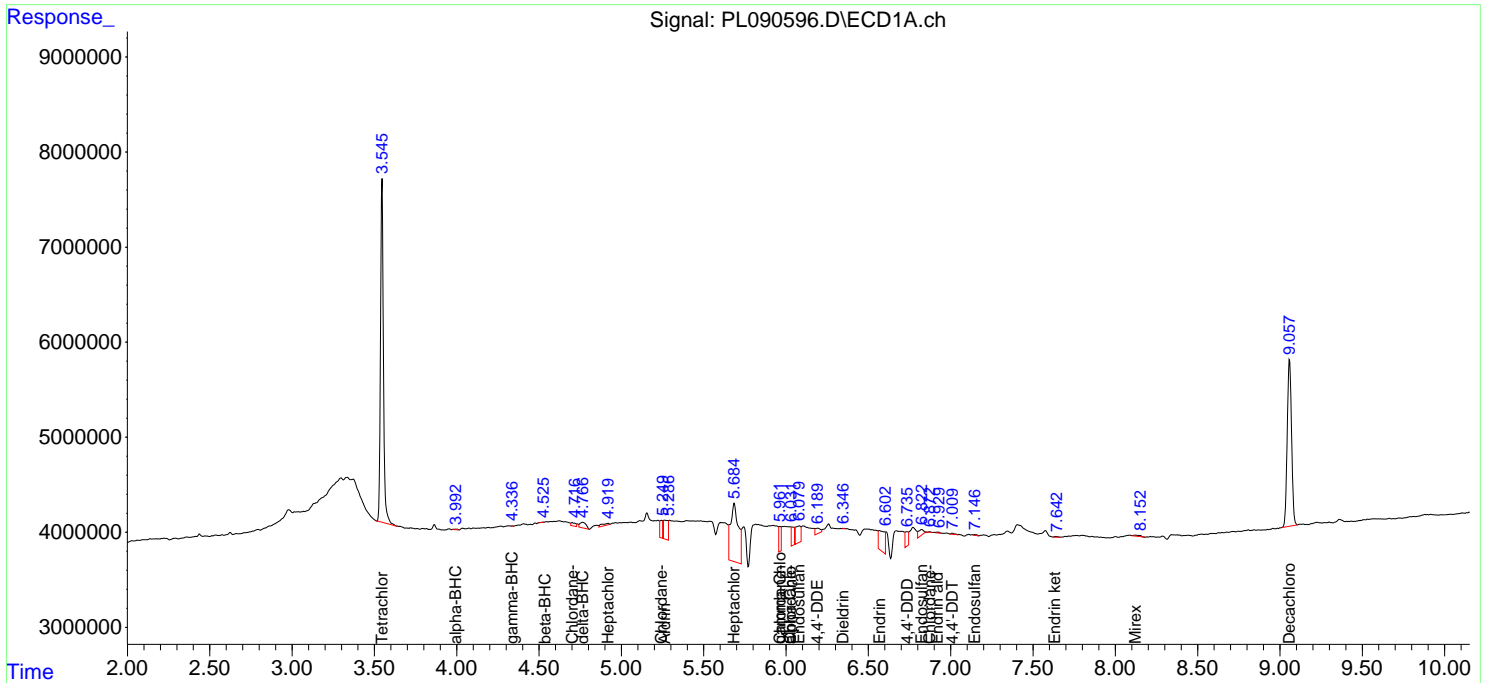
(f)=RT Delta > 1/2 Window (#)=Amounts differ by > 25% (m)=manual int.

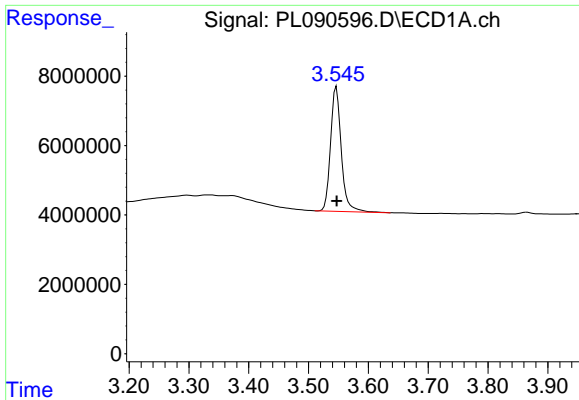
Data Path : Z:\pestpcbsrv\HPCHEM1\ECD\_L\Data\PL071924\  
 Data File : PL090596.D  
 Signal(s) : Signal #1: ECD1A.ch Signal #2: ECD2B.ch  
 Acq On : 19 Jul 2024 11:46  
 Operator : AR\AJ  
 Sample : I.BLK  
 Misc :  
 ALS Vial : 2 Sample Multiplier: 1

Instrument :  
 ECD\_L  
 ClientSampleId :

Integration File signal 1: autoint1.e  
 Integration File signal 2: autoint2.e  
 Quant Time: Jul 19 22:02:38 2024  
 Quant Method : Z:\pestpcbsrv\HPCHEM1\ECD\_L\methods\PL071524.M  
 Quant Title : GC Extractables  
 QLast Update : Mon Jul 15 14:16:48 2024  
 Response via : Initial Calibration  
 Integrator: ChemStation

Volume Inj. : 1 µl  
 Signal #1 Phase : ZB-MR2 Signal #2 Phase: ZB-MR1  
 Signal #1 Info : 30M x 0.32mm x0.2 Signal #2 Info : 30M x 0.32mm x0.5µm

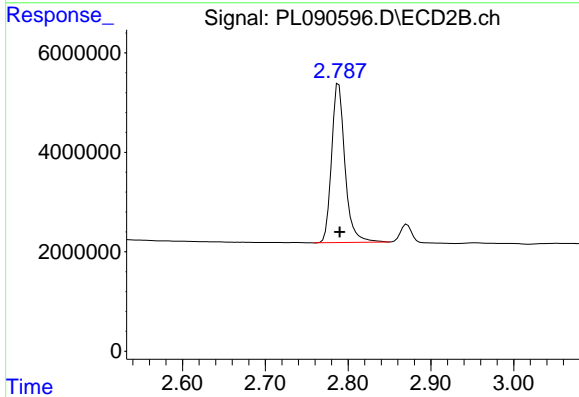




#1 Tetrachloro-m-xylene

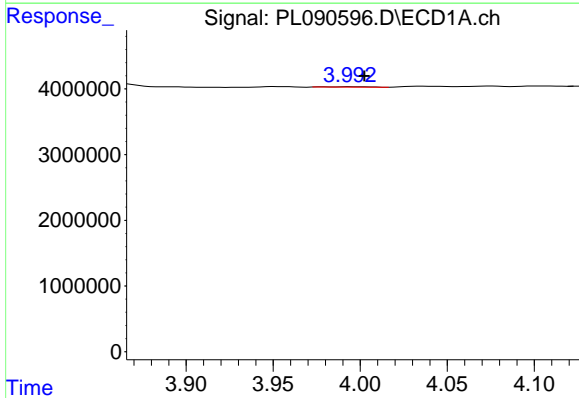
R.T.: 3.546 min  
 Delta R.T.: 0.000 min  
 Response: 44768090  
 Conc: 21.50 ng/ml

Instrument :  
 ECD\_L  
 ClientSampleId :



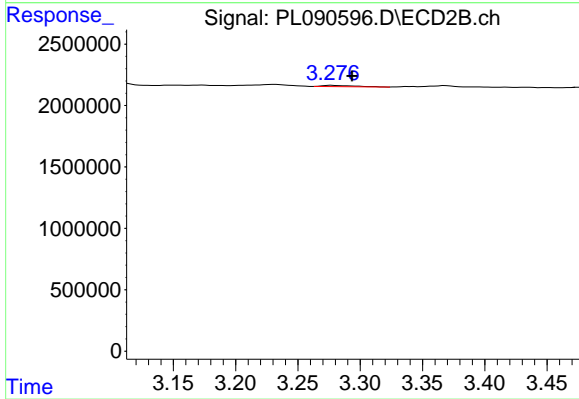
#1 Tetrachloro-m-xylene

R.T.: 2.789 min  
 Delta R.T.: 0.000 min  
 Response: 35942403  
 Conc: 21.36 ng/ml



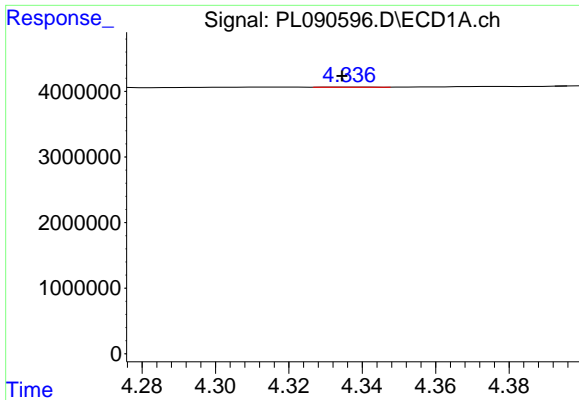
#2 alpha-BHC

R.T.: 3.993 min  
 Delta R.T.: -0.009 min  
 Response: 92938  
 Conc: 0.03 ng/ml



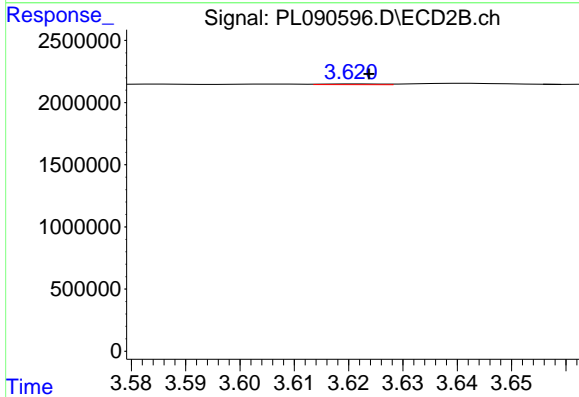
#2 alpha-BHC

R.T.: 3.277 min  
 Delta R.T.: -0.017 min  
 Response: 178236  
 Conc: 0.07 ng/ml

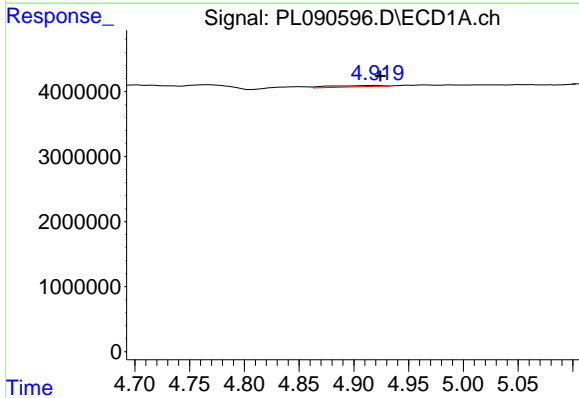


#3 gamma-BHC (Lindane)  
 R.T.: 4.337 min  
 Delta R.T.: 0.003 min  
 Response: 20821  
 Conc: 0.01 ng/ml

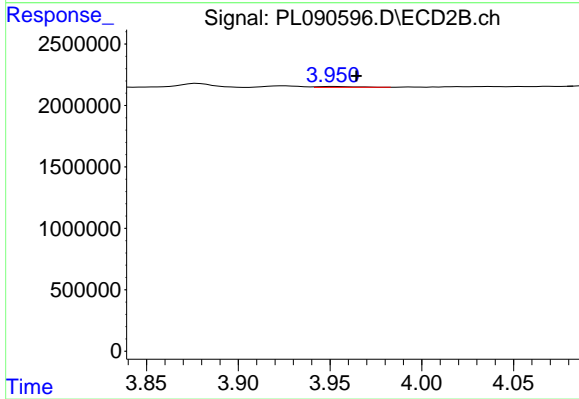
Instrument :  
 ECD\_L  
 ClientSampleId :



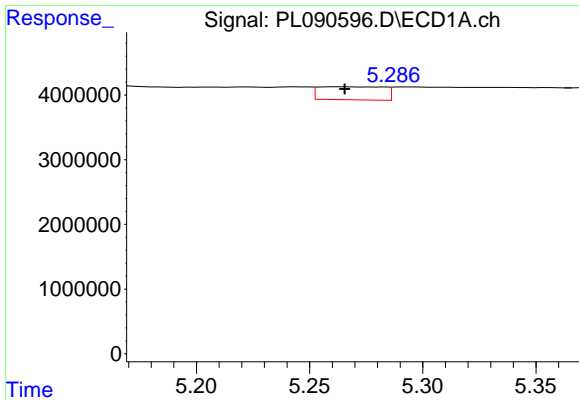
#3 gamma-BHC (Lindane)  
 R.T.: 3.622 min  
 Delta R.T.: -0.002 min  
 Response: 39600  
 Conc: 0.02 ng/ml



#4 Heptachlor  
 R.T.: 4.920 min  
 Delta R.T.: -0.004 min  
 Response: 630546  
 Conc: 0.25 ng/ml

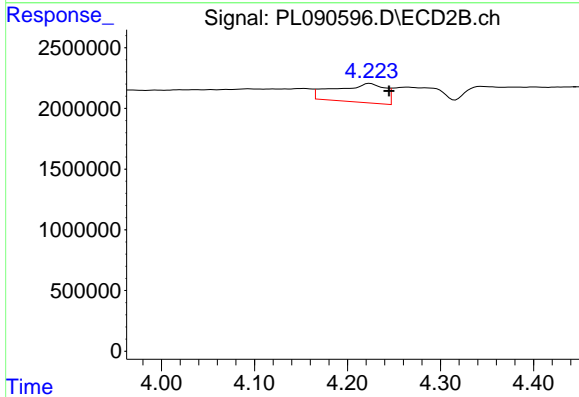


#4 Heptachlor  
 R.T.: 3.951 min  
 Delta R.T.: -0.013 min  
 Response: 107188  
 Conc: 0.05 ng/ml

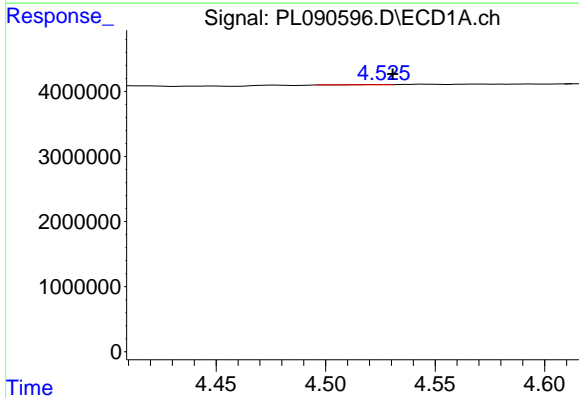


#5 Aldrin  
 R.T.: 5.263 min  
 Delta R.T.: -0.002 min  
 Response: 4023373  
 Conc: 1.61 ng/ml

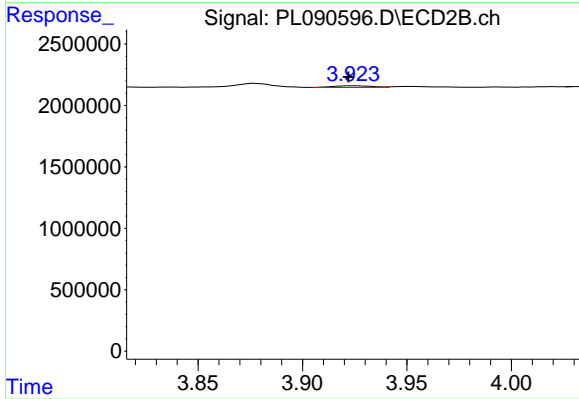
Instrument :  
 ECD\_L  
 ClientSampleId :



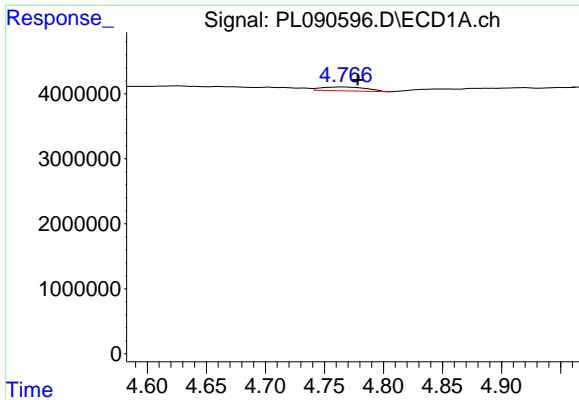
#5 Aldrin  
 R.T.: 4.224 min  
 Delta R.T.: -0.021 min  
 Response: 5777088  
 Conc: 2.72 ng/ml



#6 beta-BHC  
 R.T.: 4.526 min  
 Delta R.T.: -0.004 min  
 Response: 21473  
 Conc: 0.02 ng/ml



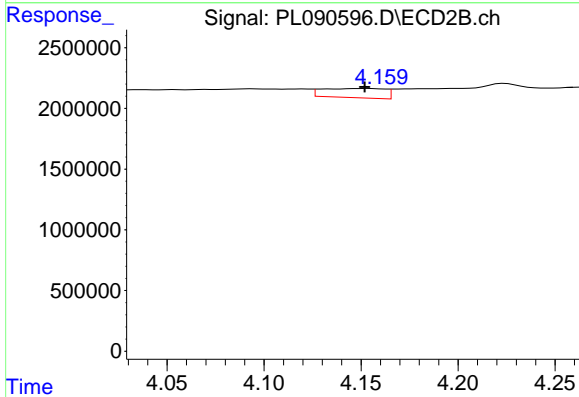
#6 beta-BHC  
 R.T.: 3.924 min  
 Delta R.T.: 0.002 min  
 Response: 189862  
 Conc: 0.18 ng/ml



#7 delta-BHC

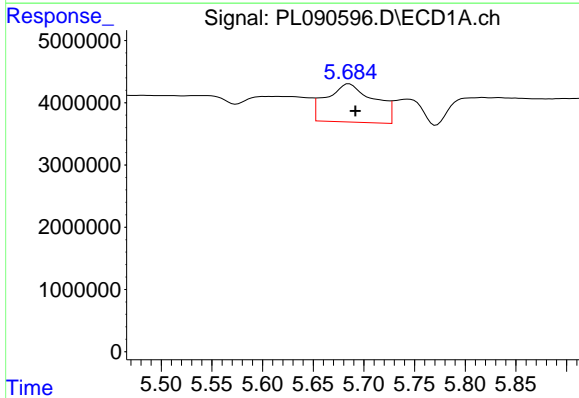
R.T.: 4.766 min  
 Delta R.T.: -0.012 min  
 Response: 1578865  
 Conc: 0.59 ng/ml

Instrument :  
 ECD\_L  
 ClientSampleId :



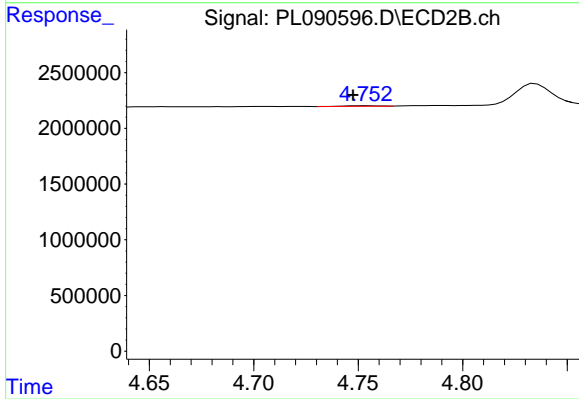
#7 delta-BHC

R.T.: 4.153 min  
 Delta R.T.: 0.000 min  
 Response: 1702551  
 Conc: 0.77 ng/ml



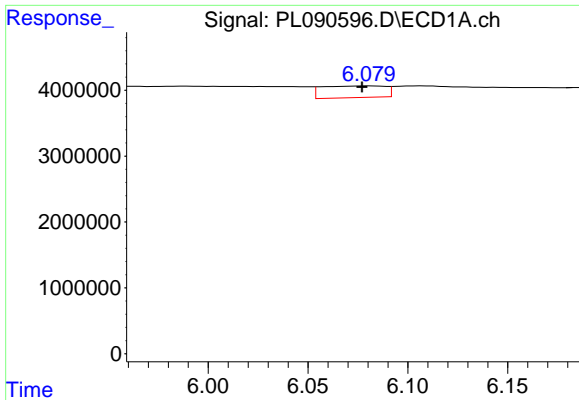
#8 Heptachlor epoxide

R.T.: 5.686 min  
 Delta R.T.: -0.006 min  
 Response: 20140113  
 Conc: 8.57 ng/ml



#8 Heptachlor epoxide

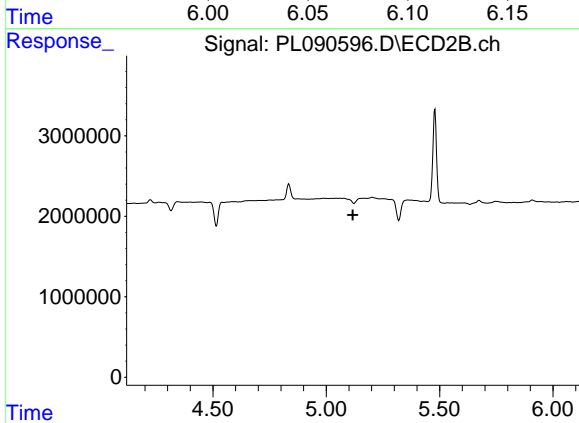
R.T.: 4.754 min  
 Delta R.T.: 0.006 min  
 Response: 48212  
 Conc: 0.02 ng/ml



#9 Endosulfan I

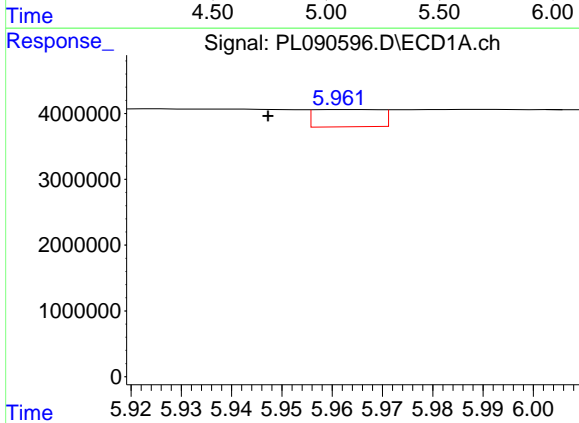
R.T.: 6.081 min  
 Delta R.T.: 0.004 min  
 Response: 3922731  
 Conc: 1.83 ng/ml

Instrument :  
 ECD\_L  
 ClientSampleId :



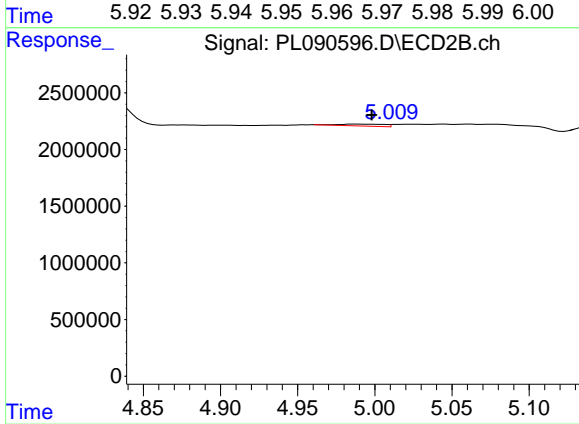
#9 Endosulfan I

R.T.: 0.000 min  
 Exp R.T. : 5.118 min  
 Response: 0  
 Conc: N.D.



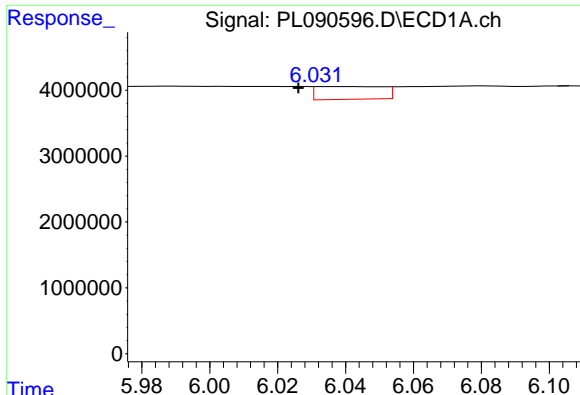
#10 gamma-Chlordane

R.T.: 5.963 min  
 Delta R.T.: 0.016 min  
 Response: 2419262  
 Conc: 1.04 ng/ml



#10 gamma-Chlordane

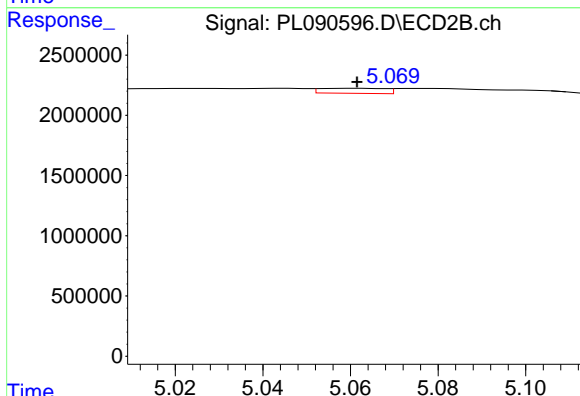
R.T.: 4.988 min  
 Delta R.T.: -0.010 min  
 Response: 355068  
 Conc: 0.18 ng/ml



#11 alpha-Chlordane

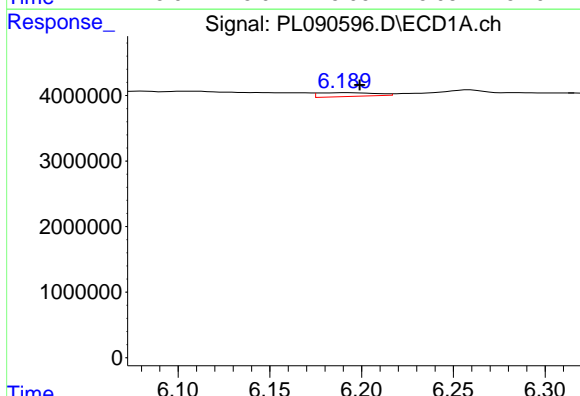
R.T.: 6.034 min  
 Delta R.T.: 0.008 min  
 Response: 2667806  
 Conc: 1.16 ng/ml

Instrument :  
 ECD\_L  
 ClientSampleId :



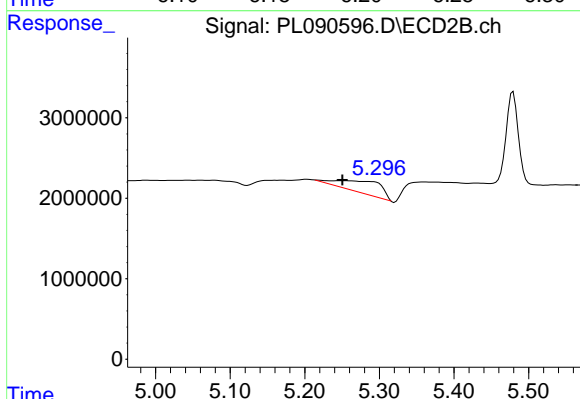
#11 alpha-Chlordane

R.T.: 5.061 min  
 Delta R.T.: 0.000 min  
 Response: 433332  
 Conc: 0.21 ng/ml



#12 4,4'-DDE

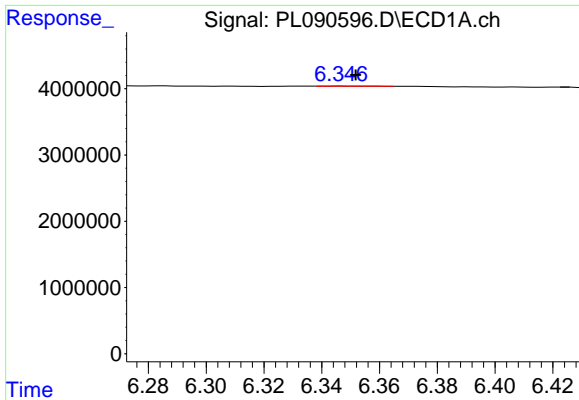
R.T.: 6.192 min  
 Delta R.T.: -0.007 min  
 Response: 1234964  
 Conc: 0.61 ng/ml



#12 4,4'-DDE

R.T.: 5.251 min  
 Delta R.T.: 0.000 min  
 Response: 5673279  
 Conc: 3.17 ng/ml

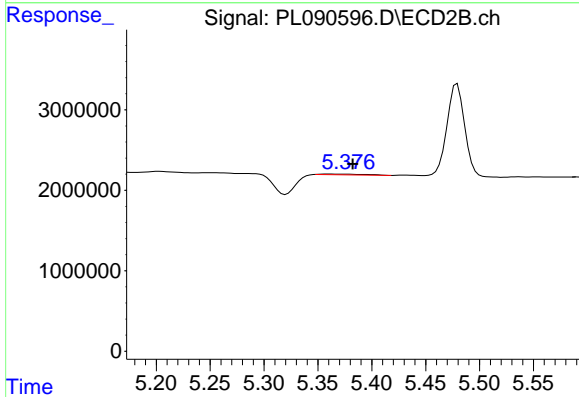




#13 Dieldrin

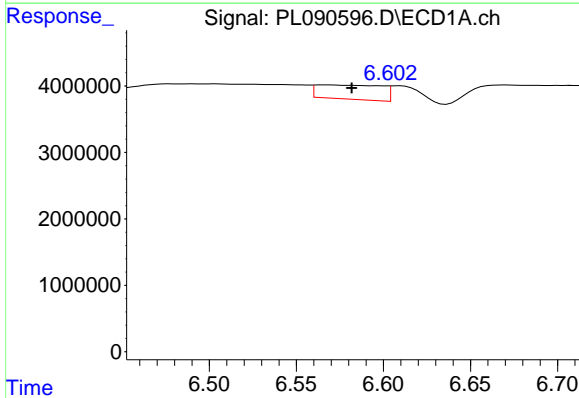
R.T.: 6.347 min  
 Delta R.T.: -0.005 min  
 Response: 39837  
 Conc: 0.02 ng/ml

Instrument :  
 ECD\_L  
 ClientSampleId :



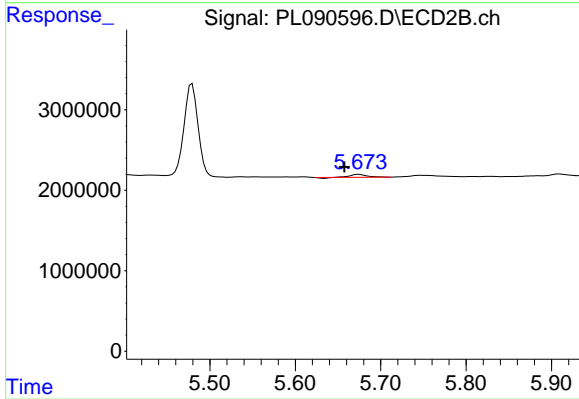
#13 Dieldrin

R.T.: 5.361 min  
 Delta R.T.: -0.022 min  
 Response: 271668  
 Conc: 0.14 ng/ml



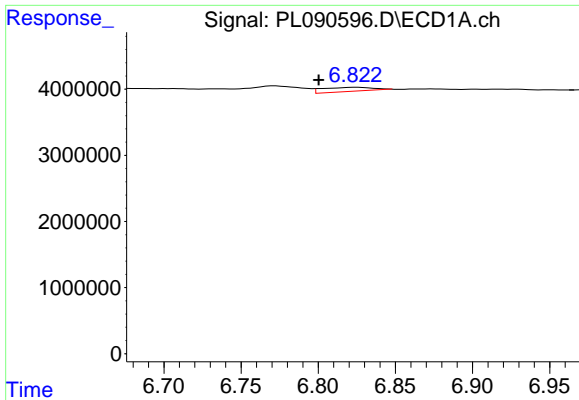
#14 Endrin

R.T.: 6.568 min  
 Delta R.T.: -0.013 min  
 Response: 5534856  
 Conc: 3.01 ng/ml



#14 Endrin

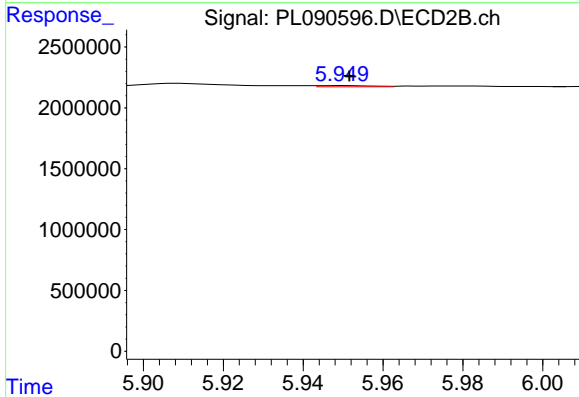
R.T.: 5.674 min  
 Delta R.T.: 0.017 min  
 Response: 440595  
 Conc: 0.26 ng/ml



#15 Endosulfan II

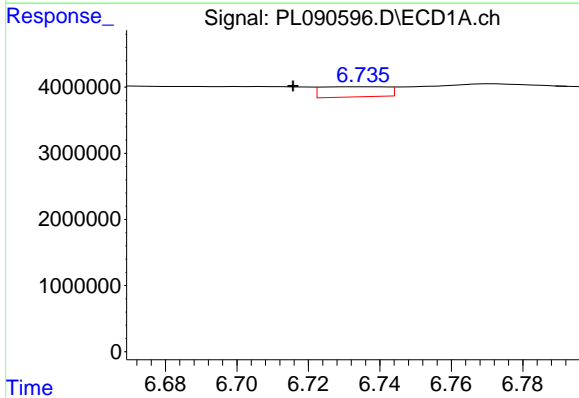
R.T.: 6.824 min  
 Delta R.T.: 0.024 min  
 Response: 1373312  
 Conc: 0.70 ng/ml

Instrument :  
 ECD\_L  
 ClientSampleId :



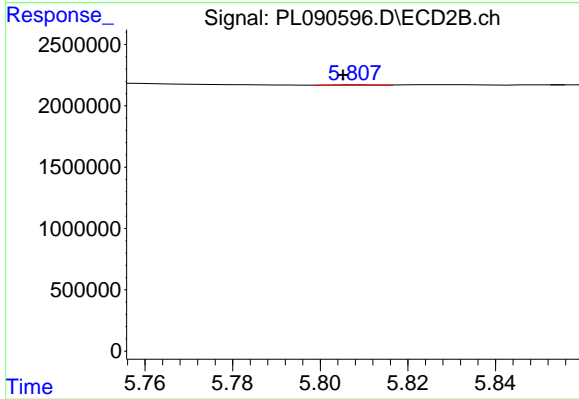
#15 Endosulfan II

R.T.: 5.950 min  
 Delta R.T.: -0.001 min  
 Response: 95027  
 Conc: 0.06 ng/ml



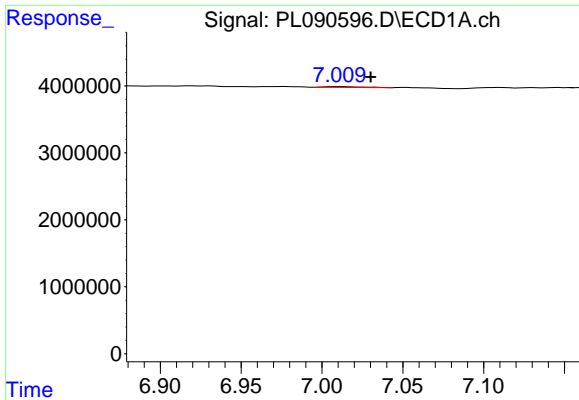
#16 4,4'-DDD

R.T.: 6.735 min  
 Delta R.T.: 0.020 min  
 Response: 1969273  
 Conc: 1.17 ng/ml



#16 4,4'-DDD

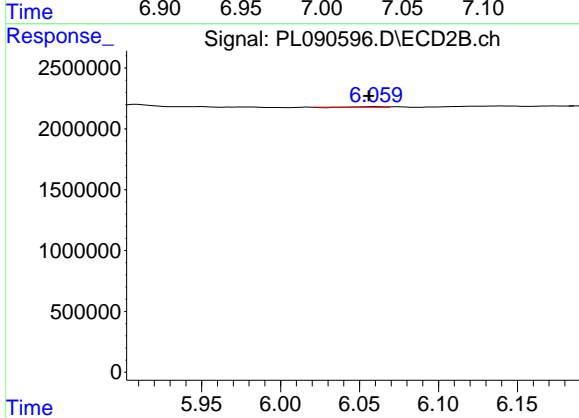
R.T.: 5.809 min  
 Delta R.T.: 0.004 min  
 Response: 30821  
 Conc: 0.02 ng/ml



#17 4,4'-DDT

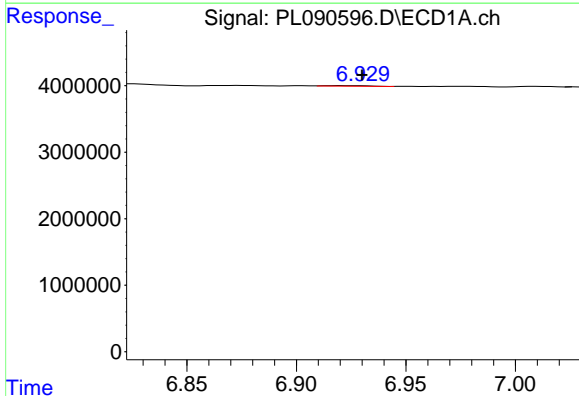
R.T.: 7.010 min  
 Delta R.T.: -0.020 min  
 Response: 194699  
 Conc: 0.12 ng/ml

Instrument :  
 ECD\_L  
 ClientSampleId :



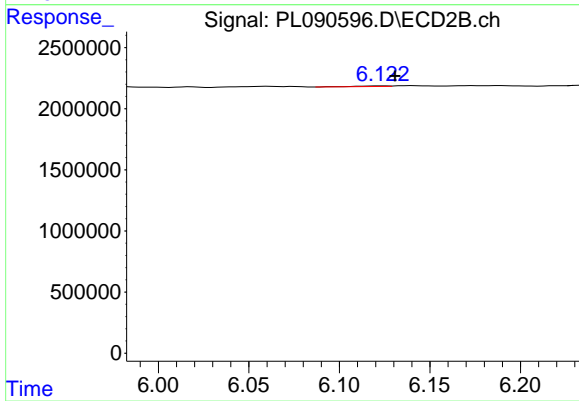
#17 4,4'-DDT

R.T.: 6.060 min  
 Delta R.T.: 0.004 min  
 Response: 26875  
 Conc: 0.02 ng/ml



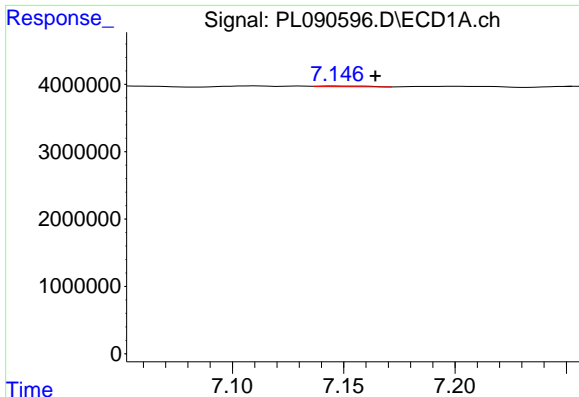
#18 Endrin aldehyde

R.T.: 6.919 min  
 Delta R.T.: -0.011 min  
 Response: 128004  
 Conc: 0.09 ng/ml



#18 Endrin aldehyde

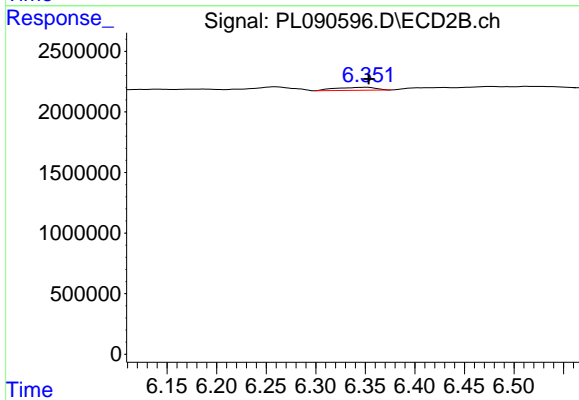
R.T.: 6.124 min  
 Delta R.T.: -0.007 min  
 Response: 69639  
 Conc: 0.05 ng/ml



#19 Endosulfan Sulfate

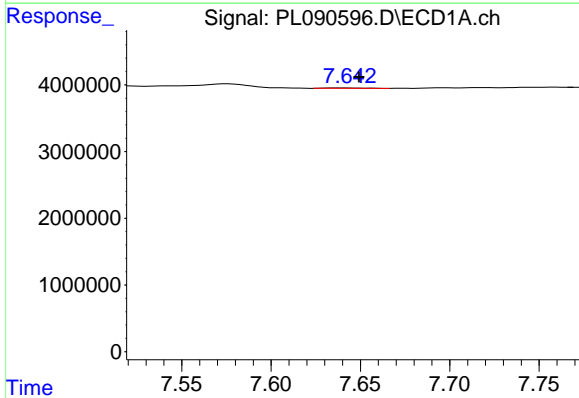
R.T.: 7.147 min  
 Delta R.T.: -0.018 min  
 Response: 148266  
 Conc: 0.08 ng/ml

Instrument :  
 ECD\_L  
 ClientSampleId :



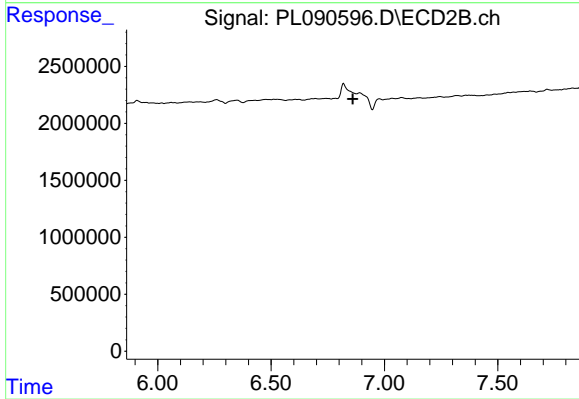
#19 Endosulfan Sulfate

R.T.: 6.351 min  
 Delta R.T.: -0.002 min  
 Response: 694270  
 Conc: 0.43 ng/ml



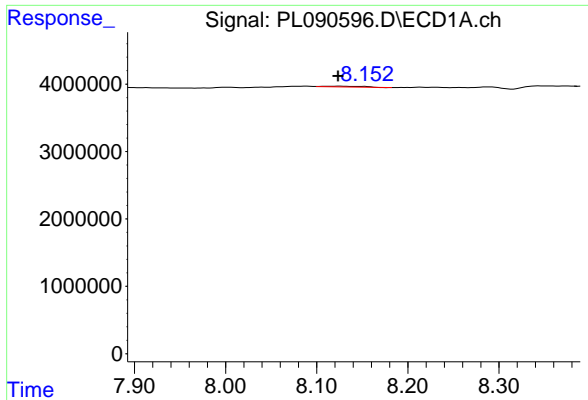
#21 Endrin ketone

R.T.: 7.642 min  
 Delta R.T.: -0.008 min  
 Response: 103275  
 Conc: 0.05 ng/ml



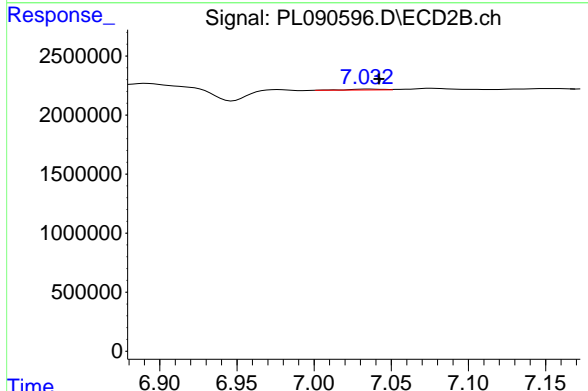
#21 Endrin ketone

R.T.: 0.000 min  
 Exp R.T. : 6.860 min  
 Response: 0  
 Conc: N.D.

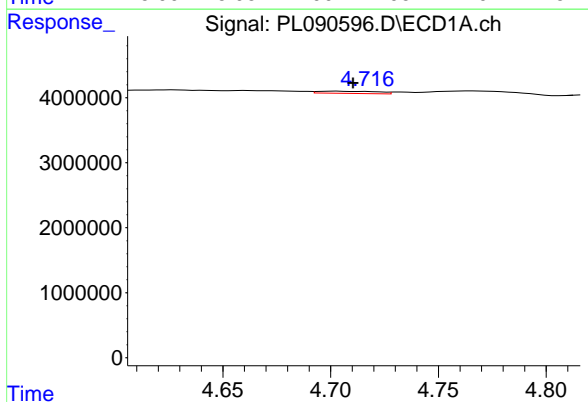


#22 Mirex  
 R.T.: 8.126 min  
 Delta R.T.: 0.002 min  
 Response: 330805  
 Conc: 0.23 ng/ml

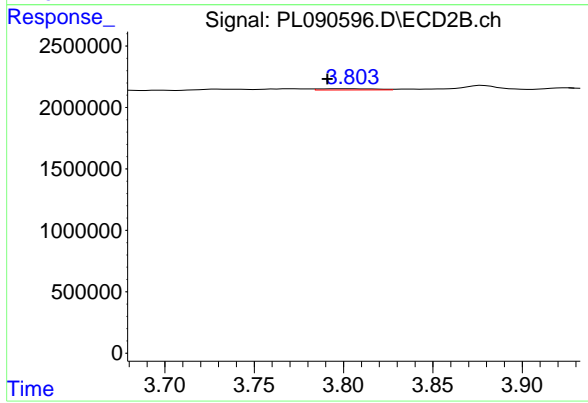
Instrument :  
 ECD\_L  
 ClientSampleId :



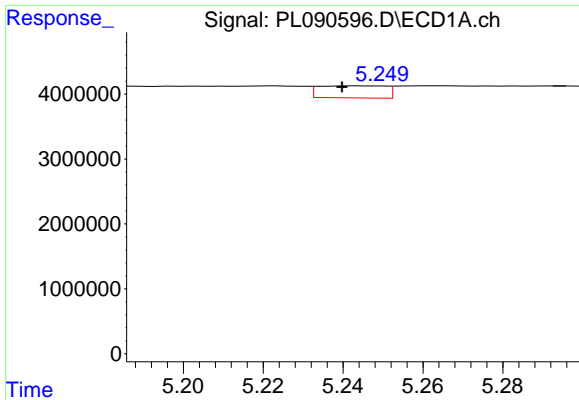
#22 Mirex  
 R.T.: 7.035 min  
 Delta R.T.: -0.007 min  
 Response: 107401  
 Conc: 0.07 ng/ml



#23 Chlordane-1  
 R.T.: 4.702 min  
 Delta R.T.: -0.008 min  
 Response: 654377  
 Conc: 7.39 ng/ml



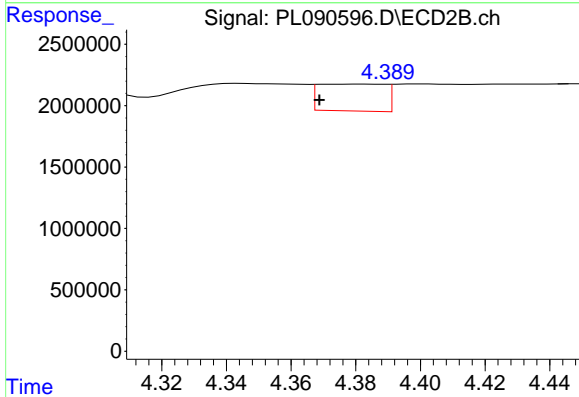
#23 Chlordane-1  
 R.T.: 3.805 min  
 Delta R.T.: 0.014 min  
 Response: 217526  
 Conc: 3.51 ng/ml



#24 Chlordane-2

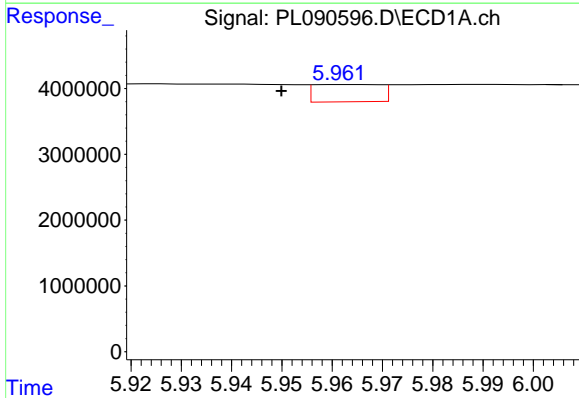
R.T.: 5.244 min  
 Delta R.T.: 0.004 min  
 Response: 2170102  
 Conc: 21.20 ng/ml

Instrument :  
 ECD\_L  
 ClientSampleId :



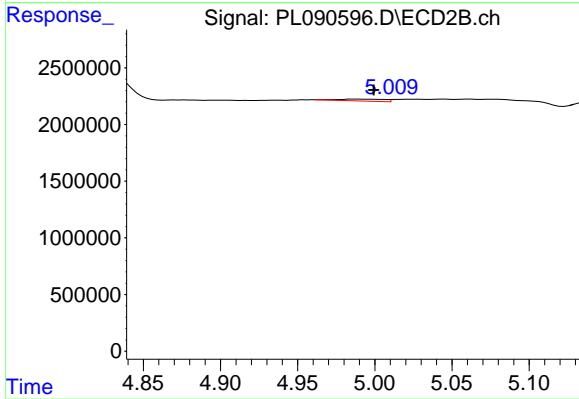
#24 Chlordane-2

R.T.: 4.382 min  
 Delta R.T.: 0.013 min  
 Response: 3117423  
 Conc: 41.10 ng/ml



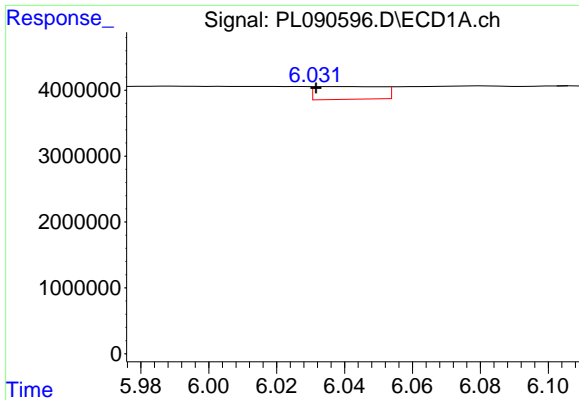
#25 Chlordane-3

R.T.: 5.963 min  
 Delta R.T.: 0.013 min  
 Response: 2419262  
 Conc: 7.31 ng/ml



#25 Chlordane-3

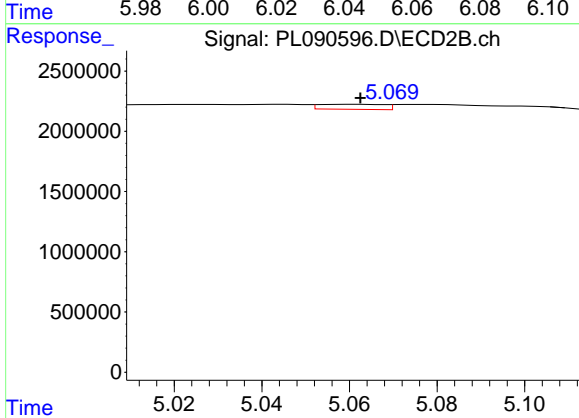
R.T.: 4.988 min  
 Delta R.T.: -0.011 min  
 Response: 355068  
 Conc: 1.72 ng/ml



#26 Chlordane-4

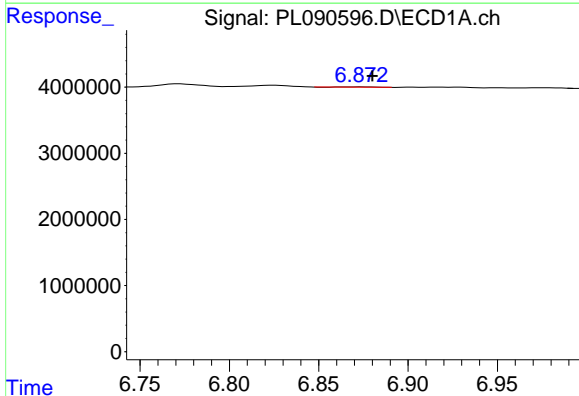
R.T.: 6.034 min  
 Delta R.T.: 0.002 min  
 Response: 2667806  
 Conc: 6.70 ng/ml

Instrument :  
 ECD\_L  
 ClientSampleId :



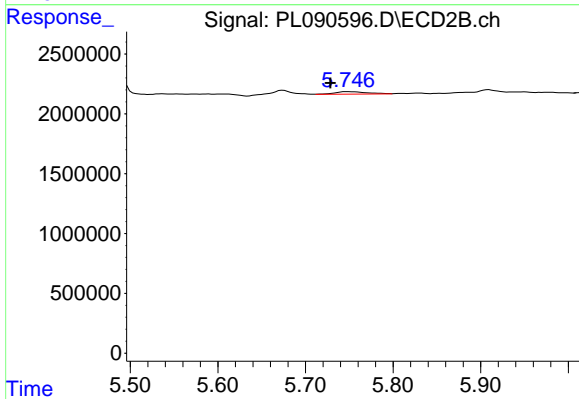
#26 Chlordane-4

R.T.: 5.061 min  
 Delta R.T.: -0.002 min  
 Response: 433332  
 Conc: 2.21 ng/ml



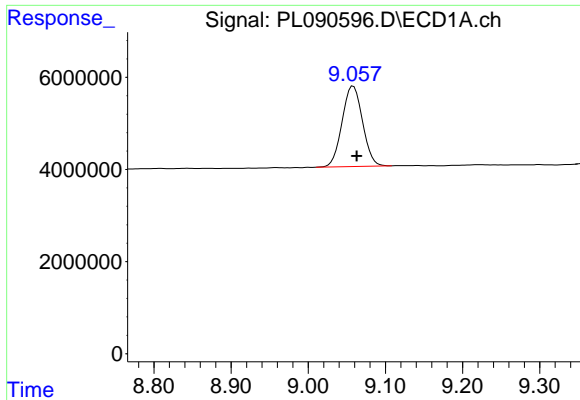
#27 Chlordane-5

R.T.: 6.873 min  
 Delta R.T.: -0.007 min  
 Response: 31198  
 Conc: 0.45 ng/ml



#27 Chlordane-5

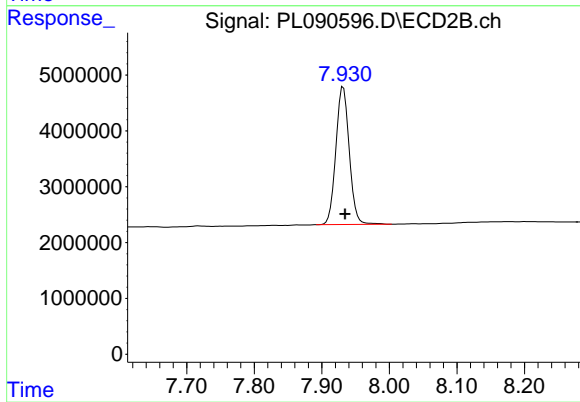
R.T.: 5.747 min  
 Delta R.T.: 0.019 min  
 Response: 531937  
 Conc: 8.82 ng/ml



#28 Decachlorobiphenyl

R.T.: 9.058 min  
Delta R.T.: -0.004 min  
Response: 32134359  
Conc: 24.18 ng/ml

Instrument :  
ECD\_L  
ClientSampleId :



#28 Decachlorobiphenyl

R.T.: 7.932 min  
Delta R.T.: -0.003 min  
Response: 34147590  
Conc: 23.42 ng/ml