

Data Path : Z:\pestpcbsrv\HPCHEM1\ECD_L\Data\PL072023\
 Data File : PL084024.D
 Signal(s) : Signal #1: ECD1A.ch Signal #2: ECD2B.ch
 Acq On : 18 Jul 2023 13:13
 Operator : AR\AJ
 Sample : HEXANE
 Misc :
 ALS Vial : 1 Sample Multiplier: 1

Instrument :
 ECD_L
 ClientSampleId :

Integration File signal 1: autoint1.e
 Integration File signal 2: autoint2.e
 Quant Time: Jul 19 10:12:44 2023
 Quant Method : Z:\pestpcbsrv\HPCHEM1\ECD_L\methods\PL071223.M
 Quant Title : GC Extractables
 QLast Update : Fri Jul 14 00:03:54 2023
 Response via : Initial Calibration
 Integrator: ChemStation

Volume Inj. : 1 µl
 Signal #1 Phase : ZB-MR2 Signal #2 Phase: ZB-MR1
 Signal #1 Info : 30M x 0.32mm x0.2 Signal #2 Info : 30M x 0.32mm x0.5µm

Compound	RT#1	RT#2	Resp#1	Resp#2	ng/ml	ng/ml

System Monitoring Compounds						
28) SA Decachlor...	9.044f	7.856	528531	175524	0.406	0.158 #
Target Compounds						
2) A alpha-BHC	0.000	3.218f	0	36857	N.D.	0.023 #
4) MA Heptachlor	4.854	3.864	438079	12788	0.161	0.011 #
5) MB Aldrin	0.000	4.166f	0	84022	N.D.	0.056 #
7) B delta-BHC	4.734f	4.073f	1589864	94526	0.596	0.062 #
8) B Heptachlo...	5.642	4.628f	45018318	105206	16.863	0.082 #
9) A Endosulfan I	6.016	5.043f	451344	1085280	0.191	0.885 #
10) B gamma-Chl...	5.879	4.891	2058100	943326	0.797	0.708
11) B alpha-Chl...	5.963	4.943f	355139	2173115	0.140	1.613 #
12) B 4,4'-DDE	0.000	5.152f	0	75525	N.D.	0.061 #
13) MA Dieldrin	0.000	5.316f	0	508936	N.D.	0.391 #
14) MA Endrin	0.000	5.590f	0	4515600	N.D.	4.108 #
15) B Endosulfa...	6.745	5.889f	4652684	206487	2.482	0.180 #
16) A 4,4'-DDD	6.668	0.000	14019909	0	9.547	N.D. #
18) B Endrin al...	0.000	6.023f	0	192519	N.D.	0.214 #
19) B Endosulfa...	7.116	6.277	853705	48980	0.494	0.045 #
20) A Methoxychlor	0.000	6.571	0	111892	N.D.	0.233 #
23) Chlordane-1	0.000	3.704	0	126709	N.D.	0.321 #
25) Chlordane-3	5.879	4.891	2058100	943326	0.586	0.688
26) Chlordane-4	5.963	4.943f	355139	2173115	0.087	1.517 #
27) Chlordane-5	0.000	5.889f	0	206487	N.D.	0.450 #

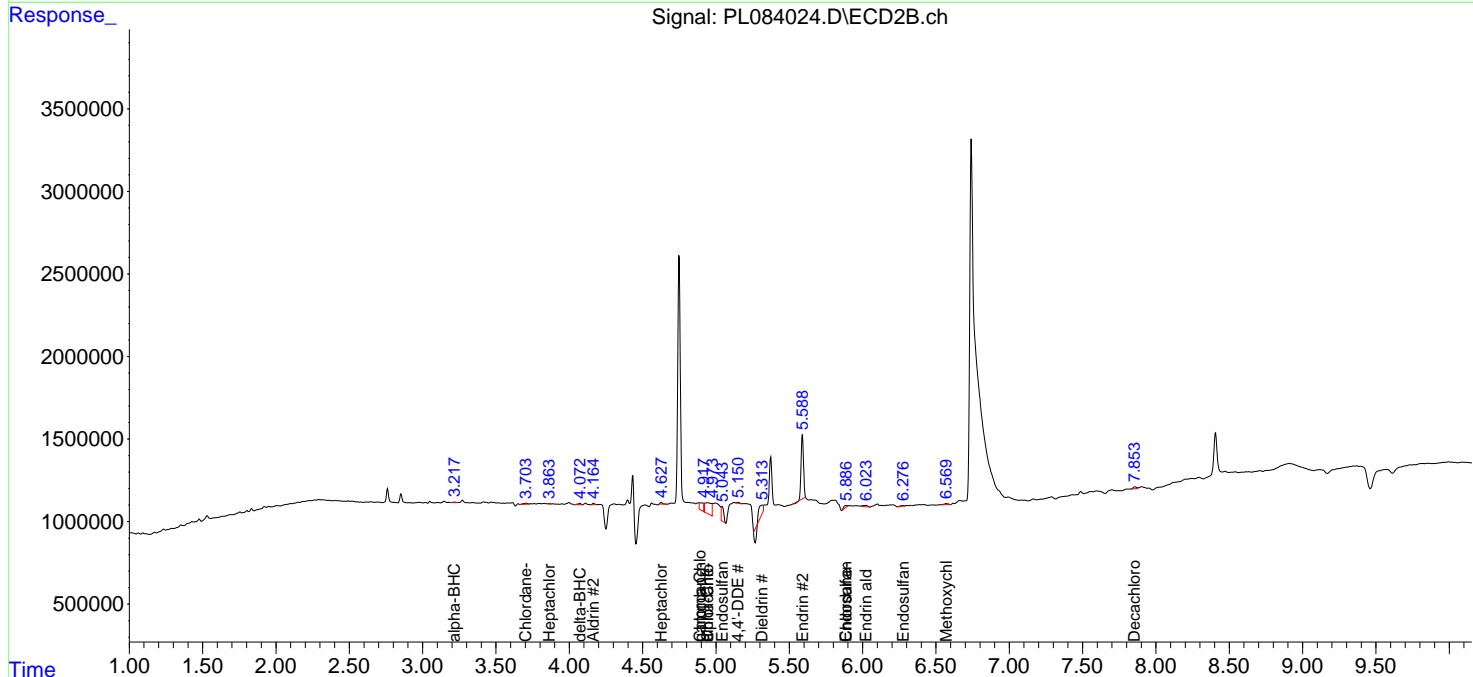
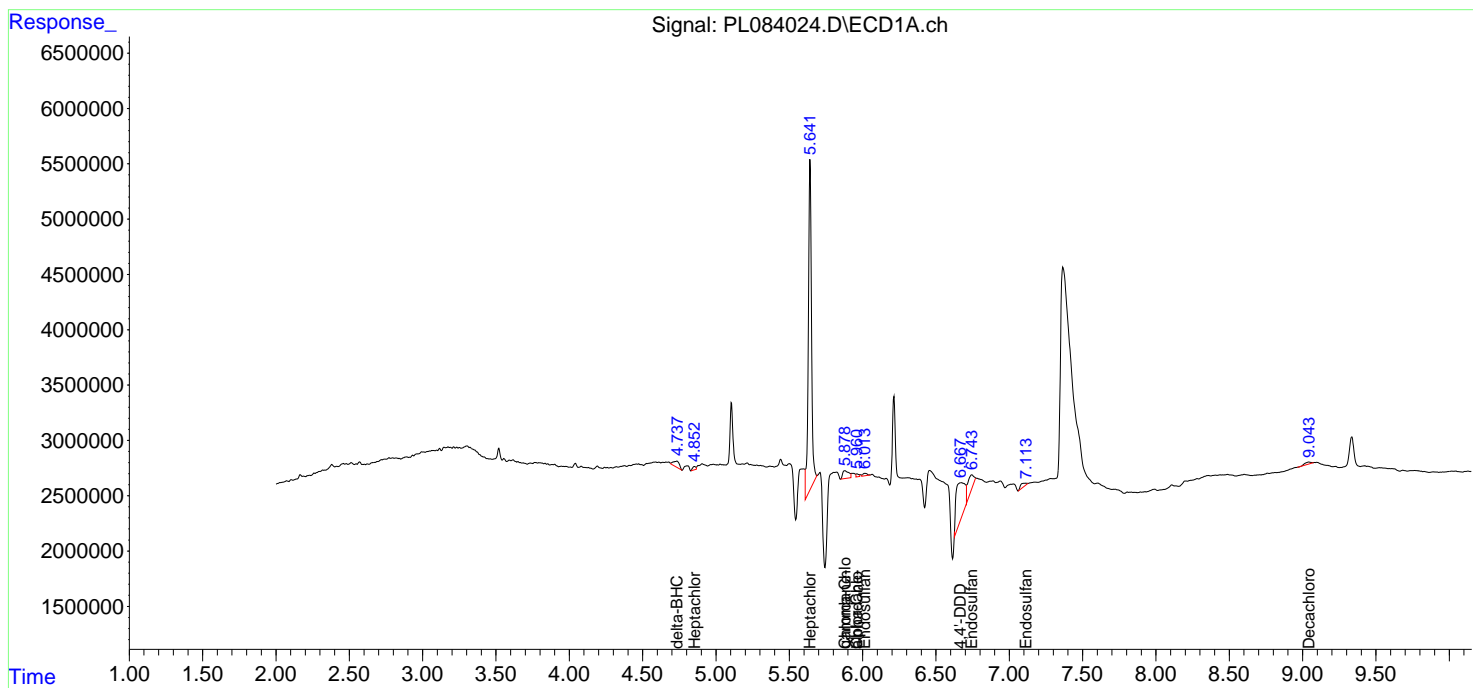
(f)=RT Delta > 1/2 Window (#)=Amounts differ by > 25% (m)=manual int.

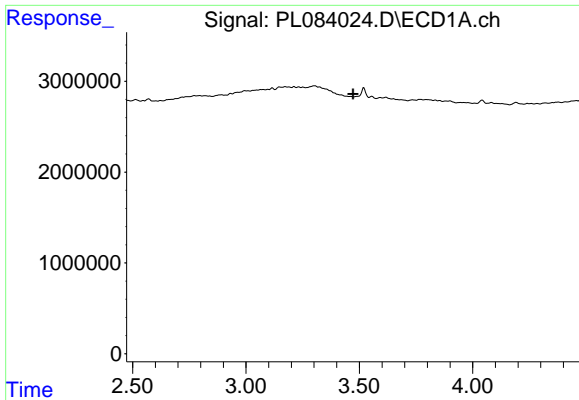
Data Path : Z:\pestpcbsrv\HPCHEM1\ECD_L\Data\PL072023\
 Data File : PL084024.D
 Signal(s) : Signal #1: ECD1A.ch Signal #2: ECD2B.ch
 Acq On : 18 Jul 2023 13:13
 Operator : AR\AJ
 Sample : HEXANE
 Misc :
 ALS Vial : 1 Sample Multiplier: 1

Instrument :
 ECD_L
 ClientSampleId :

Integration File signal 1: autoint1.e
 Integration File signal 2: autoint2.e
 Quant Time: Jul 19 10:12:44 2023
 Quant Method : Z:\pestpcbsrv\HPCHEM1\ECD_L\methods\PL071223.M
 Quant Title : GC Extractables
 QLast Update : Fri Jul 14 00:03:54 2023
 Response via : Initial Calibration
 Integrator: ChemStation

Volume Inj. : 1 µl
 Signal #1 Phase : ZB-MR2 Signal #2 Phase: ZB-MR1
 Signal #1 Info : 30M x 0.32mm x0.2 Signal #2 Info : 30M x 0.32mm x0.5µm

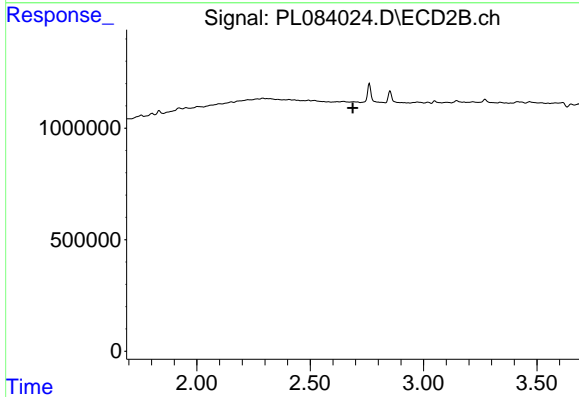




#1 Tetrachloro-m-xylene

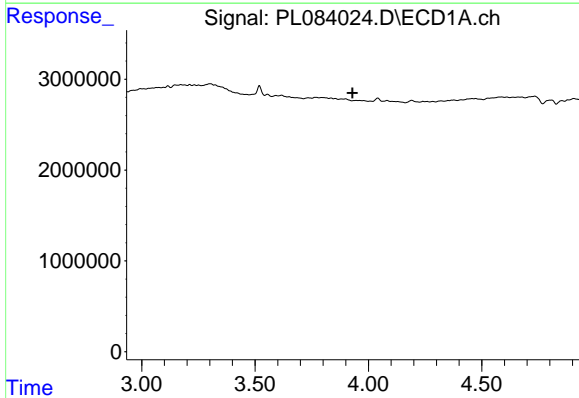
R.T.: 0.000 min
 Exp R.T. : 3.473 min
 Response: 0
 Conc: N.D.

Instrument :
 ECD_L
 ClientSampleId :



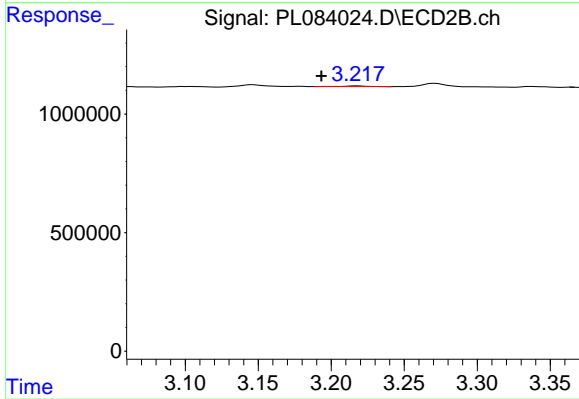
#1 Tetrachloro-m-xylene

R.T.: 0.000 min
 Exp R.T. : 2.688 min
 Response: 0
 Conc: N.D.



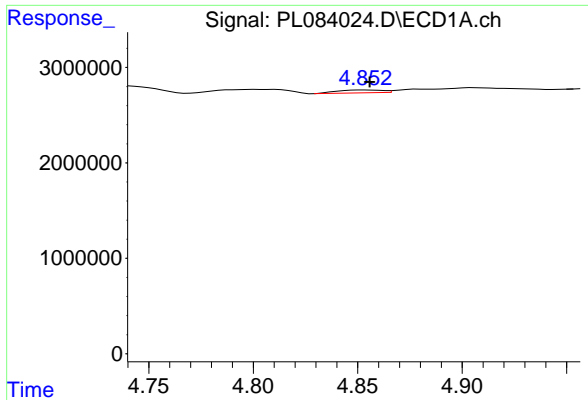
#2 alpha-BHC

R.T.: 0.000 min
 Exp R.T. : 3.930 min
 Response: 0
 Conc: N.D.



#2 alpha-BHC

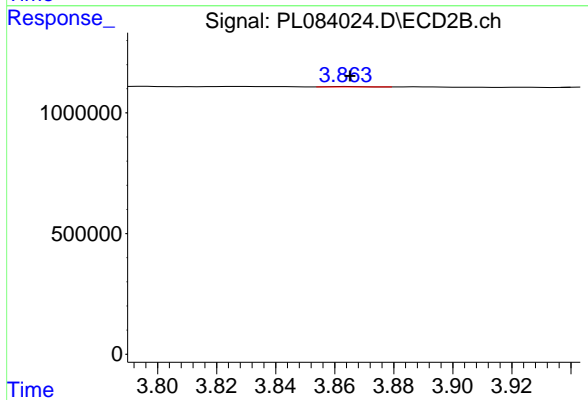
R.T.: 3.218 min
 Delta R.T.: 0.025 min
 Response: 36857
 Conc: 0.02 ng/ml



#4 Heptachlor

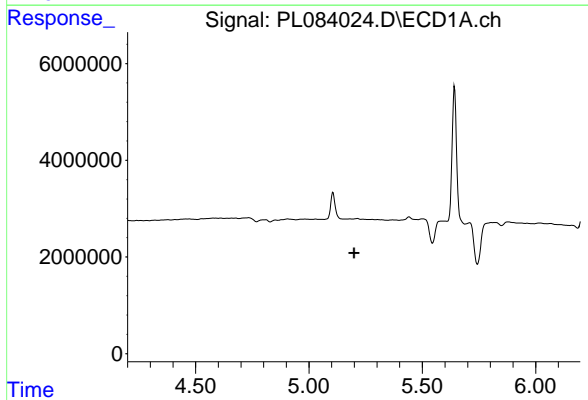
R.T.: 4.854 min
 Delta R.T.: -0.002 min
 Response: 438079
 Conc: 0.16 ng/ml

Instrument :
 ECD_L
 ClientSampleId :



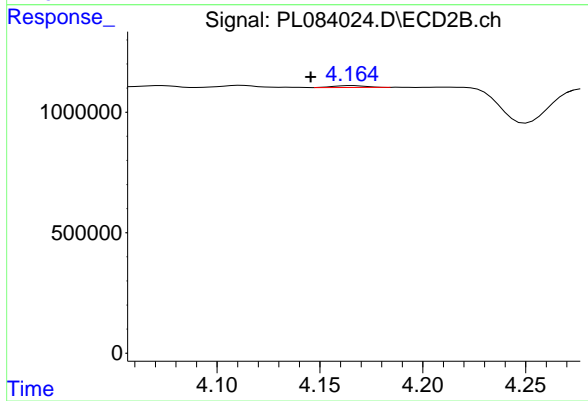
#4 Heptachlor

R.T.: 3.864 min
 Delta R.T.: -0.001 min
 Response: 12788
 Conc: 0.01 ng/ml



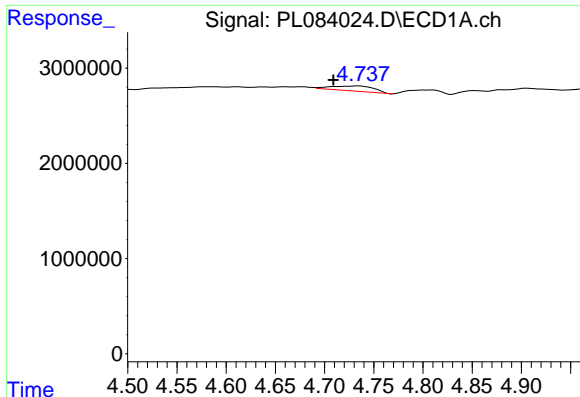
#5 Aldrin

R.T.: 0.000 min
 Exp R.T. : 5.199 min
 Response: 0
 Conc: N.D.



#5 Aldrin

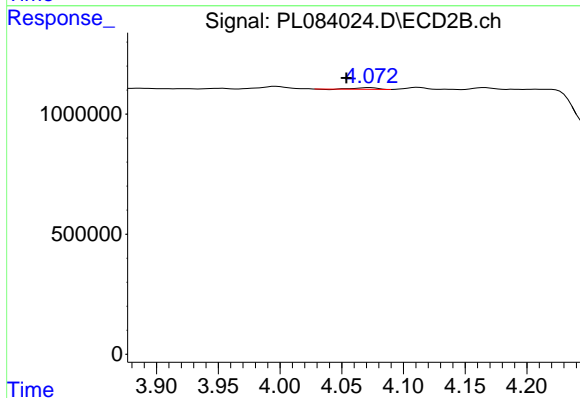
R.T.: 4.166 min
 Delta R.T.: 0.020 min
 Response: 84022
 Conc: 0.06 ng/ml



#7 delta-BHC

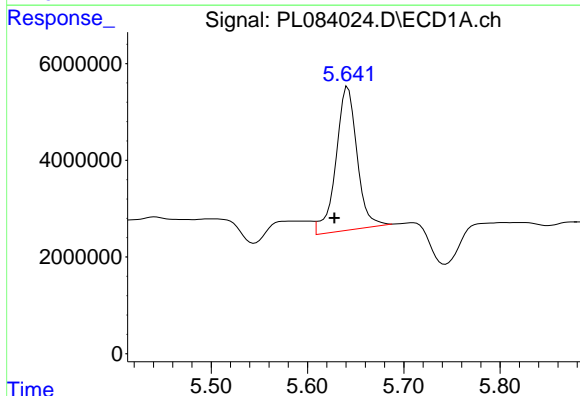
R.T.: 4.734 min
 Delta R.T.: 0.025 min
 Response: 1589864
 Conc: 0.60 ng/ml

Instrument :
 ECD_L
 ClientSampleId :



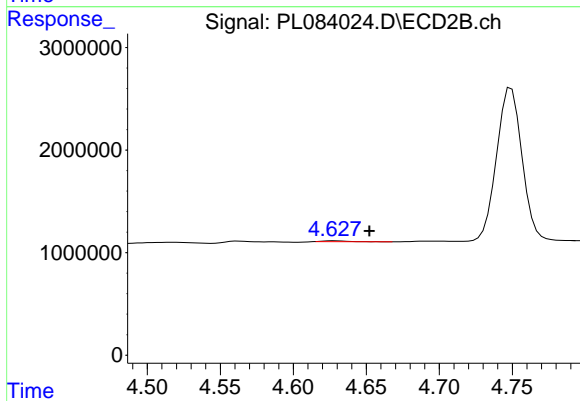
#7 delta-BHC

R.T.: 4.073 min
 Delta R.T.: 0.019 min
 Response: 94526
 Conc: 0.06 ng/ml



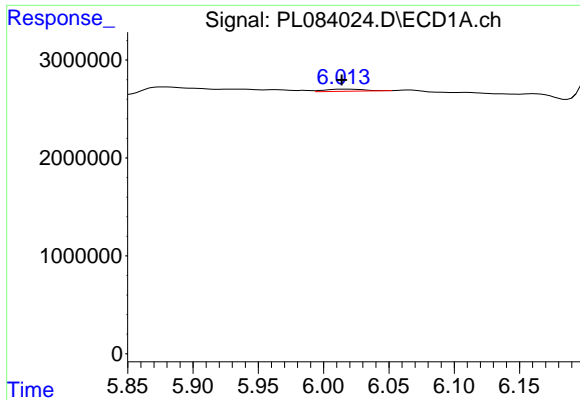
#8 Heptachlor epoxide

R.T.: 5.642 min
 Delta R.T.: 0.014 min
 Response: 45018318
 Conc: 16.86 ng/ml



#8 Heptachlor epoxide

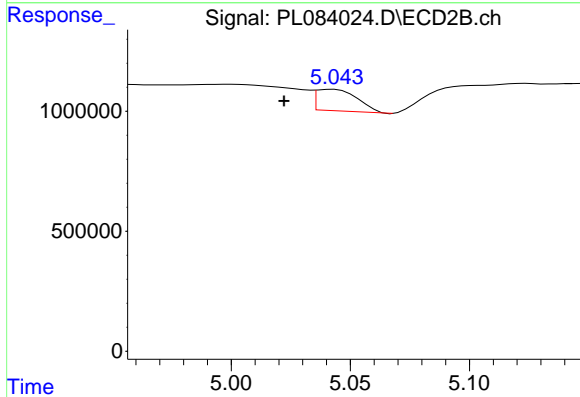
R.T.: 4.628 min
 Delta R.T.: -0.024 min
 Response: 105206
 Conc: 0.08 ng/ml



#9 Endosulfan I

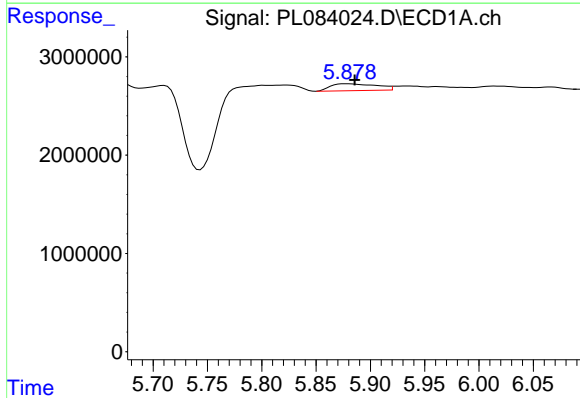
R.T.: 6.016 min
 Delta R.T.: 0.002 min
 Response: 451344
 Conc: 0.19 ng/ml

Instrument :
 ECD_L
 ClientSampleId :



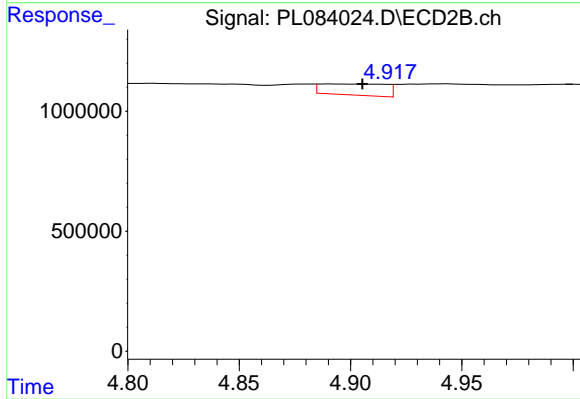
#9 Endosulfan I

R.T.: 5.043 min
 Delta R.T.: 0.021 min
 Response: 1085280
 Conc: 0.88 ng/ml



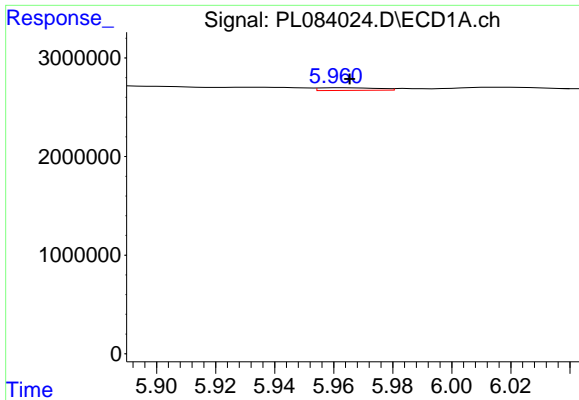
#10 gamma-Chlordane

R.T.: 5.879 min
 Delta R.T.: -0.007 min
 Response: 2058100
 Conc: 0.80 ng/ml



#10 gamma-Chlordane

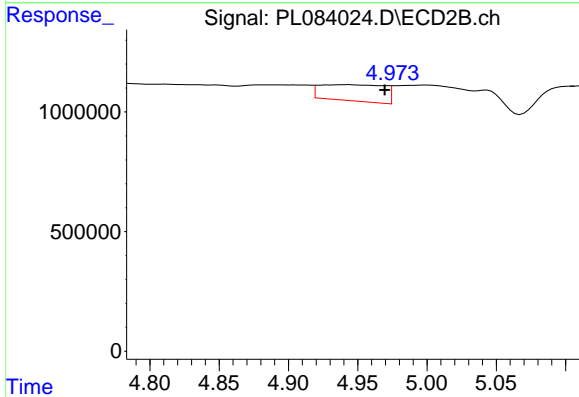
R.T.: 4.891 min
 Delta R.T.: -0.015 min
 Response: 943326
 Conc: 0.71 ng/ml



#11 alpha-Chlordane

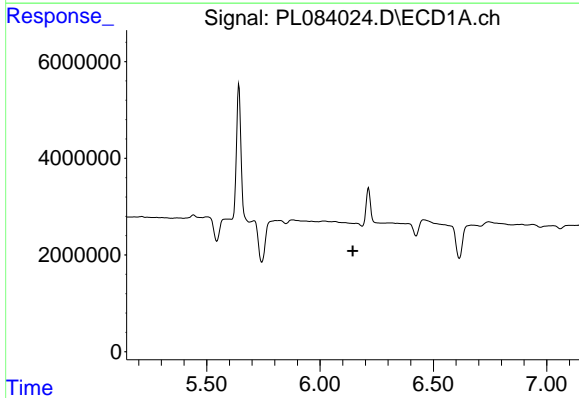
R.T.: 5.963 min
 Delta R.T.: -0.003 min
 Response: 355139
 Conc: 0.14 ng/ml

Instrument :
 ECD_L
 ClientSampleId :



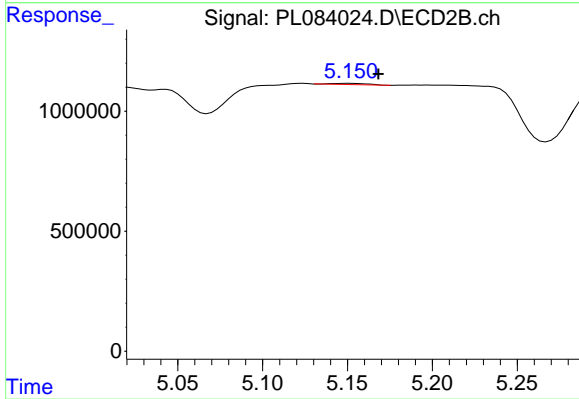
#11 alpha-Chlordane

R.T.: 4.943 min
 Delta R.T.: -0.026 min
 Response: 2173115
 Conc: 1.61 ng/ml



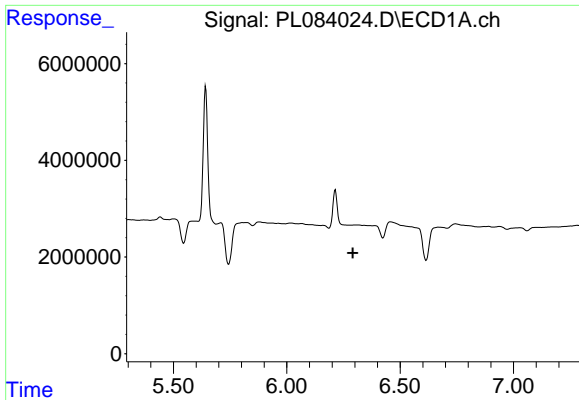
#12 4,4'-DDE

R.T.: 0.000 min
 Exp R.T. : 6.144 min
 Response: 0
 Conc: N.D.



#12 4,4'-DDE

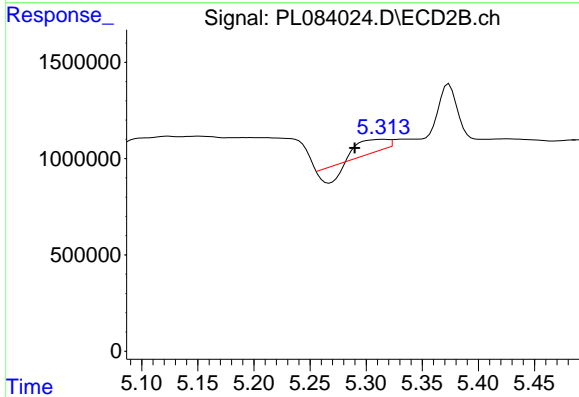
R.T.: 5.152 min
 Delta R.T.: -0.016 min
 Response: 75525
 Conc: 0.06 ng/ml



#13 Dieldrin

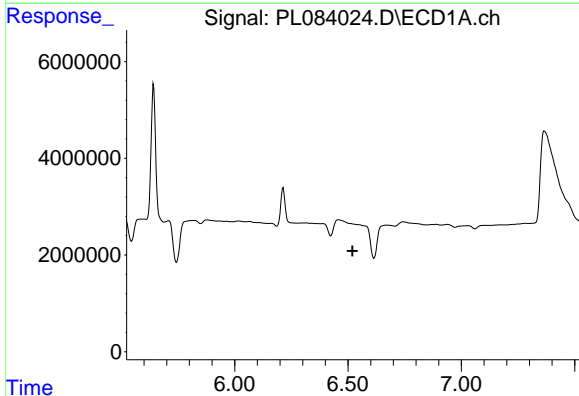
R.T.: 0.000 min
 Exp R.T. : 6.291 min
 Response: 0
 Conc: N.D.

Instrument :
 ECD_L
 ClientSampleId :



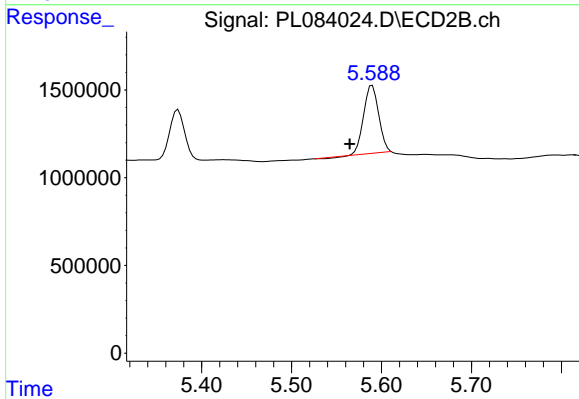
#13 Dieldrin

R.T.: 5.316 min
 Delta R.T.: 0.026 min
 Response: 508936
 Conc: 0.39 ng/ml



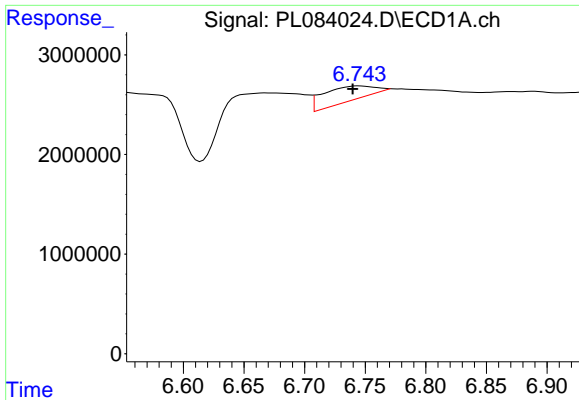
#14 Endrin

R.T.: 0.000 min
 Exp R.T. : 6.520 min
 Response: 0
 Conc: N.D.



#14 Endrin

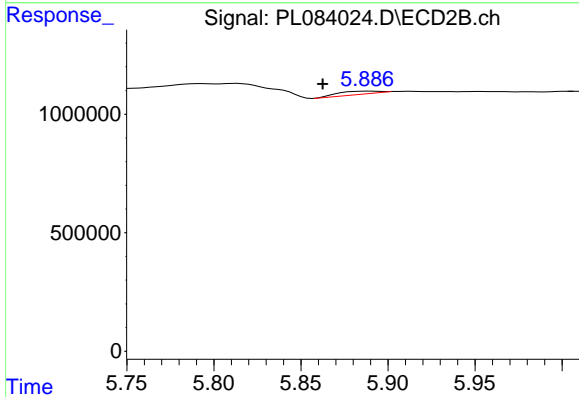
R.T.: 5.590 min
 Delta R.T.: 0.025 min
 Response: 4515600
 Conc: 4.11 ng/ml



#15 Endosulfan II

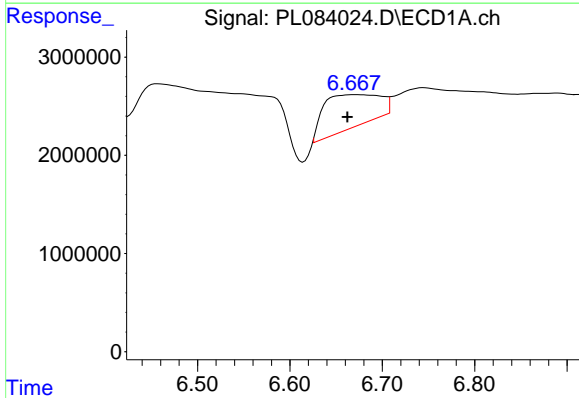
R.T.: 6.745 min
 Delta R.T.: 0.005 min
 Response: 4652684
 Conc: 2.48 ng/ml

Instrument :
 ECD_L
 ClientSampleId :



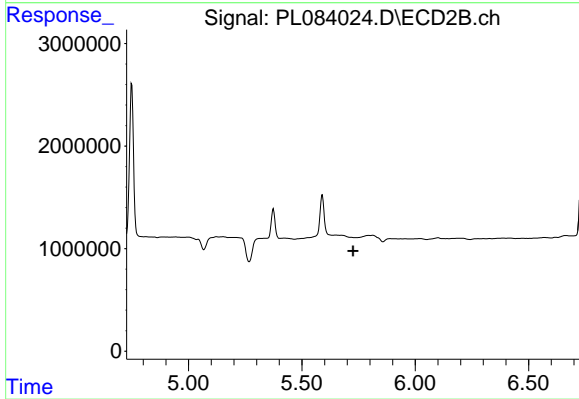
#15 Endosulfan II

R.T.: 5.889 min
 Delta R.T.: 0.026 min
 Response: 206487
 Conc: 0.18 ng/ml



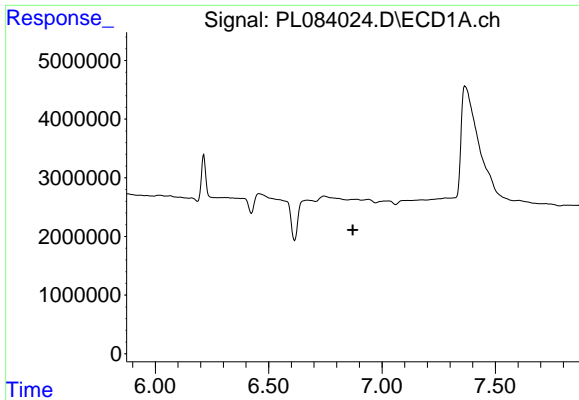
#16 4,4'-DDD

R.T.: 6.668 min
 Delta R.T.: 0.006 min
 Response: 14019909
 Conc: 9.55 ng/ml



#16 4,4'-DDD

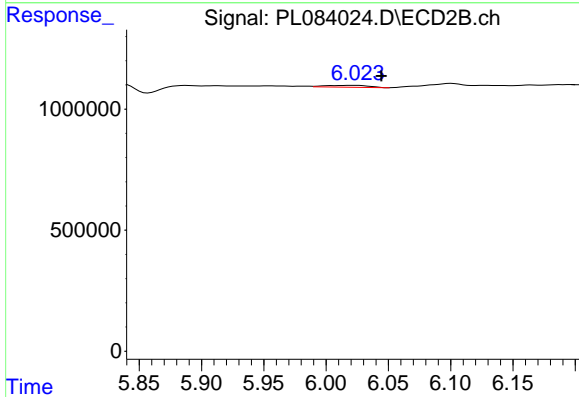
R.T.: 0.000 min
 Exp R.T. : 5.725 min
 Response: 0
 Conc: N.D.



#18 Endrin aldehyde

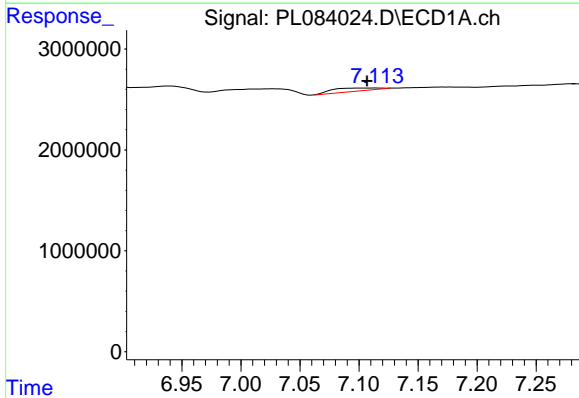
R.T.: 0.000 min
 Exp R.T.: 6.872 min
 Response: 0
 Conc: N.D.

Instrument :
 ECD_L
 ClientSampleId :



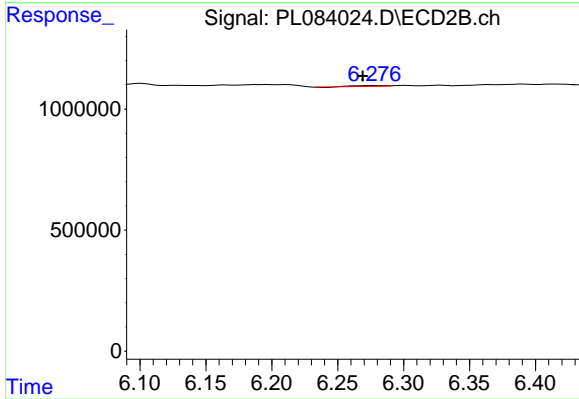
#18 Endrin aldehyde

R.T.: 6.023 min
 Delta R.T.: -0.021 min
 Response: 192519
 Conc: 0.21 ng/ml



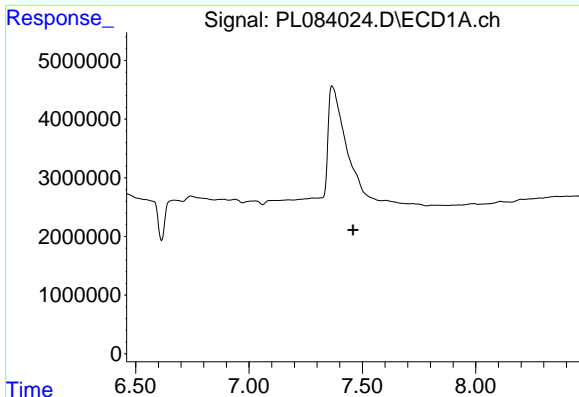
#19 Endosulfan Sulfate

R.T.: 7.116 min
 Delta R.T.: 0.009 min
 Response: 853705
 Conc: 0.49 ng/ml



#19 Endosulfan Sulfate

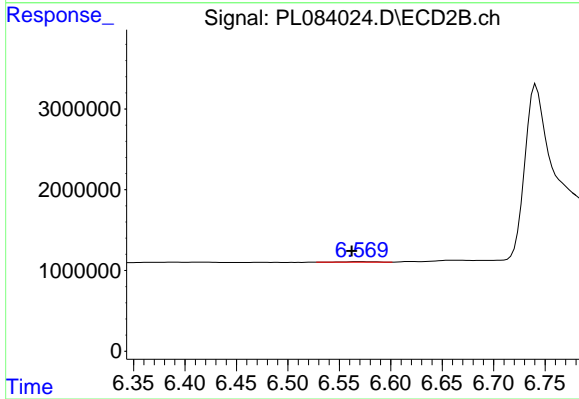
R.T.: 6.277 min
 Delta R.T.: 0.008 min
 Response: 48980
 Conc: 0.04 ng/ml



#20 Methoxychlor

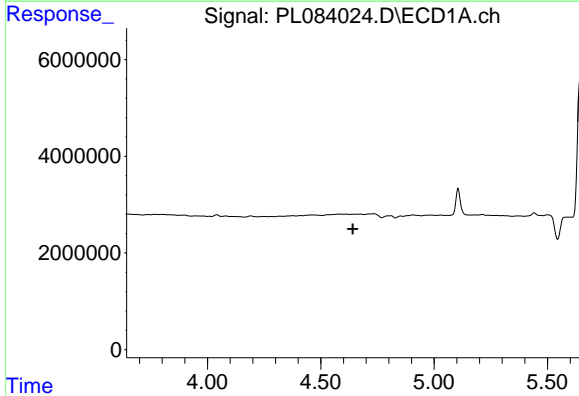
R.T.: 0.000 min
 Exp R.T. : 7.459 min
 Response: 0
 Conc: N.D.

Instrument :
 ECD_L
 ClientSampleId :



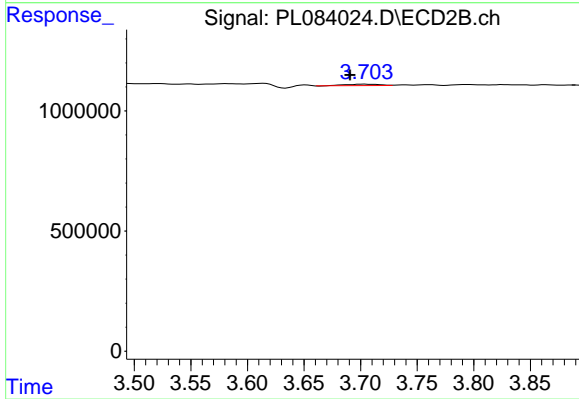
#20 Methoxychlor

R.T.: 6.571 min
 Delta R.T.: 0.008 min
 Response: 111892
 Conc: 0.23 ng/ml



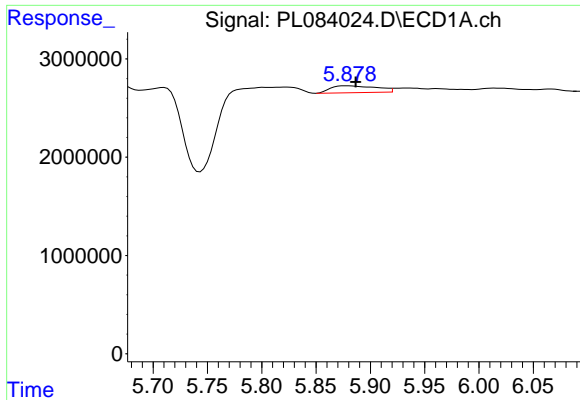
#23 Chlordane-1

R.T.: 0.000 min
 Exp R.T. : 4.641 min
 Response: 0
 Conc: N.D.



#23 Chlordane-1

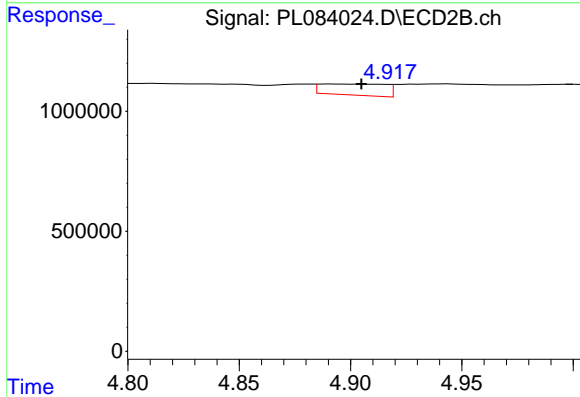
R.T.: 3.704 min
 Delta R.T.: 0.014 min
 Response: 126709
 Conc: 0.32 ng/ml



#25 Chlordane-3

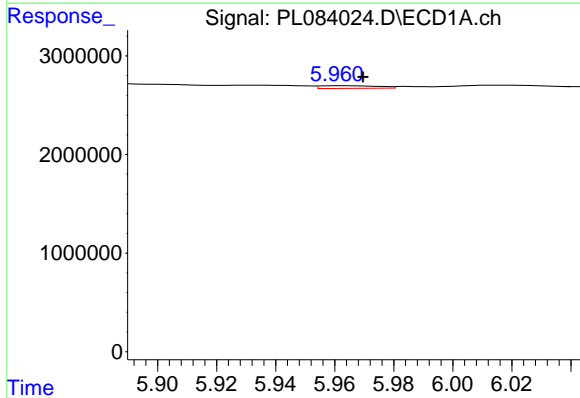
R.T.: 5.879 min
 Delta R.T.: -0.008 min
 Response: 2058100
 Conc: 0.59 ng/ml

Instrument :
 ECD_L
 ClientSampleId :



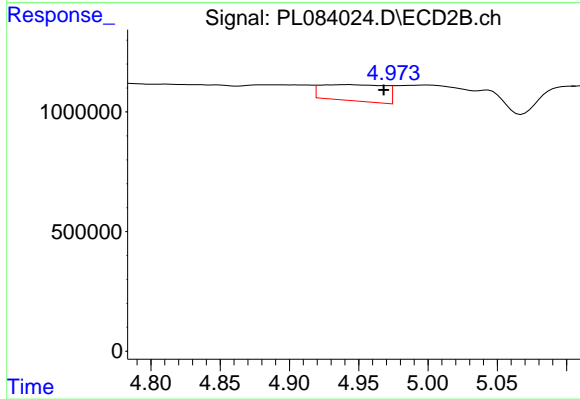
#25 Chlordane-3

R.T.: 4.891 min
 Delta R.T.: -0.014 min
 Response: 943326
 Conc: 0.69 ng/ml



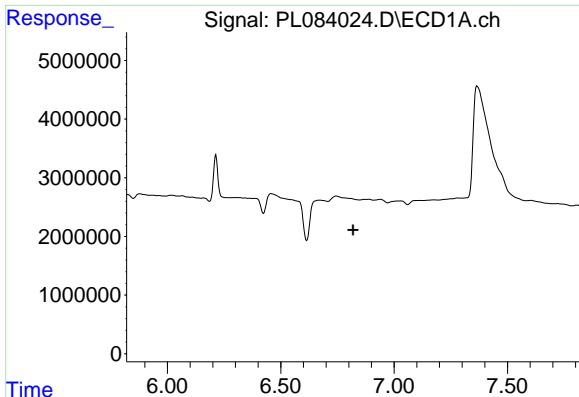
#26 Chlordane-4

R.T.: 5.963 min
 Delta R.T.: -0.007 min
 Response: 355139
 Conc: 0.09 ng/ml



#26 Chlordane-4

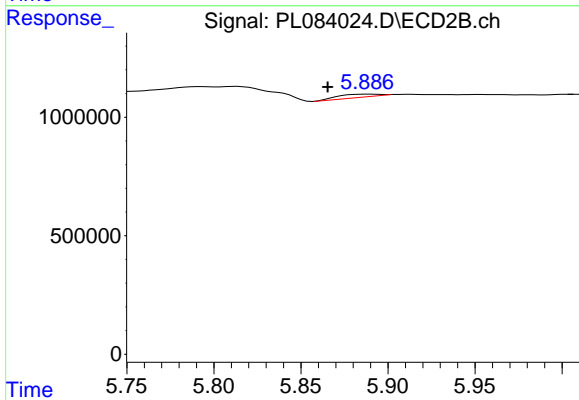
R.T.: 4.943 min
 Delta R.T.: -0.025 min
 Response: 217315
 Conc: 1.52 ng/ml



#27 Chlordane-5

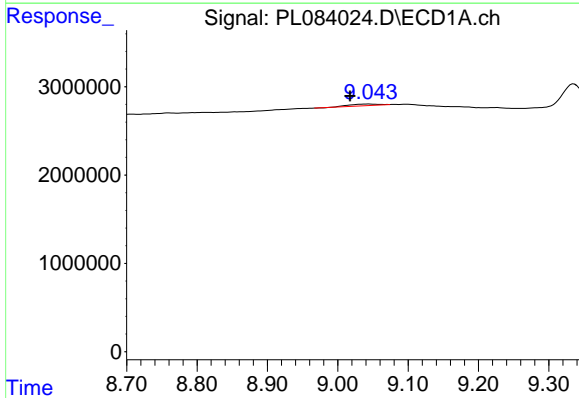
R.T.: 0.000 min
 Exp R.T.: 6.819 min
 Response: 0
 Conc: N.D.

Instrument :
 ECD_L
 ClientSampleId :



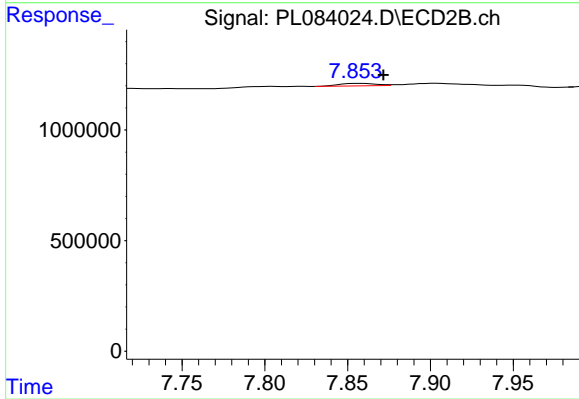
#27 Chlordane-5

R.T.: 5.889 min
 Delta R.T.: 0.023 min
 Response: 206487
 Conc: 0.45 ng/ml



#28 Decachlorobiphenyl

R.T.: 9.044 min
 Delta R.T.: 0.027 min
 Response: 528531
 Conc: 0.41 ng/ml



#28 Decachlorobiphenyl

R.T.: 7.856 min
 Delta R.T.: -0.015 min
 Response: 175524
 Conc: 0.16 ng/ml