

Data Path : Z:\pestpcbsrv\HPCHEM1\ECD_L\Data\PL072120\
 Data File : PL060065.D
 Signal(s) : Signal #1: ECD1A.ch Signal #2: ECD2B.ch
 Acq On : 21 Jul 2020 14:00
 Operator : DD\AJ
 Sample : L3360-01
 Misc :
 ALS Vial : 18 Sample Multiplier: 1

Instrument :
 ECD_L
 ClientSampled :
 SP-1A

Integration File signal 1: autoint1.e
 Integration File signal 2: autoint2.e
 Quant Time: Jul 21 15:37:24 2020
 Quant Method : Z:\pestpcbsrv\HPCHEM1\ECD_L\methods\PL071020.M
 Quant Title : GC Extractables
 QLast Update : Fri Jul 10 18:52:06 2020
 Response via : Initial Calibration
 Integrator: ChemStation

Volume Inj. : 1 µl
 Signal #1 Phase : ZB-MR2 Signal #2 Phase: ZB-MR1
 Signal #1 Info : 30M x 0.32mm x0.2 Signal #2 Info : 30M x 0.32mm x0.5µm

Compound	RT#1	RT#2	Resp#1	Resp#2	ng/ml	ng/ml

System Monitoring Compounds						
1) SA Tetrachlo...	3.465	4.012	25989427	35761033	13.437	13.494
28) SA Decachlor...	8.224	9.098	24878852	28332282	15.123	13.547
Target Compounds						
4) MA Heptachlor	4.488	5.197	11575494	18758970	5.161	5.576
5) MB Aldrin	4.737	5.528f	2594001	3058168	1.315	0.982 #
6) B beta-BHC	4.440	4.884f	9184615	-1350471	8.993	N.D. #
7) B delta-BHC	4.654	5.103f	1885383	699858	0.848	0.225 #
8) B Heptachlo...	0.000	5.879	0	6721034	N.D.	2.496 #
9) A Endosulfan I	5.533	6.243	2350935	6010065	1.397	2.253 #
10) B gamma-Chl...	5.408	6.125	23367078	38919422	12.880	13.591
11) B alpha-Chl...	5.466	6.200	43990451	84866429	24.394	29.681
12) B 4,4'-DDE	5.631	6.354	27070155	47684175	16.255	17.815
13) MA Dieldrin	5.757	6.518	7196947	3815362	4.079	1.379 #
14) MA Endrin	6.020	6.715	3488200	7115538	2.396	3.344 #
15) B Endosulfa...	6.301	0.000	15594116	0	9.337	N.D. #
16) A 4,4'-DDD	0.000	6.852	0	7790420	N.D.	3.394 #
17) MA 4,4'-DDT	6.387	7.146	14782009	26027148	11.369	13.218
19) B Endosulfa...	0.000	7.282	0	1292799	N.D.	0.553 #
21) B Endrin ke...	7.198f	0.000	1673710	0	0.892	N.D. #
23) Chlordane-1	4.336	5.008	13465196	10210815	219.780	105.149 #
24) Chlordane-2	4.843	5.474	36978060	69174241	584.031	603.746
25) Chlordane-3	5.408	6.125	23367078	38919422	138.172	100.588 #
26) Chlordane-4	5.466	6.200	43990451	84866429	315.300	183.337 #
27) Chlordane-5	6.301	7.006	15594116	21740251	274.832	279.923

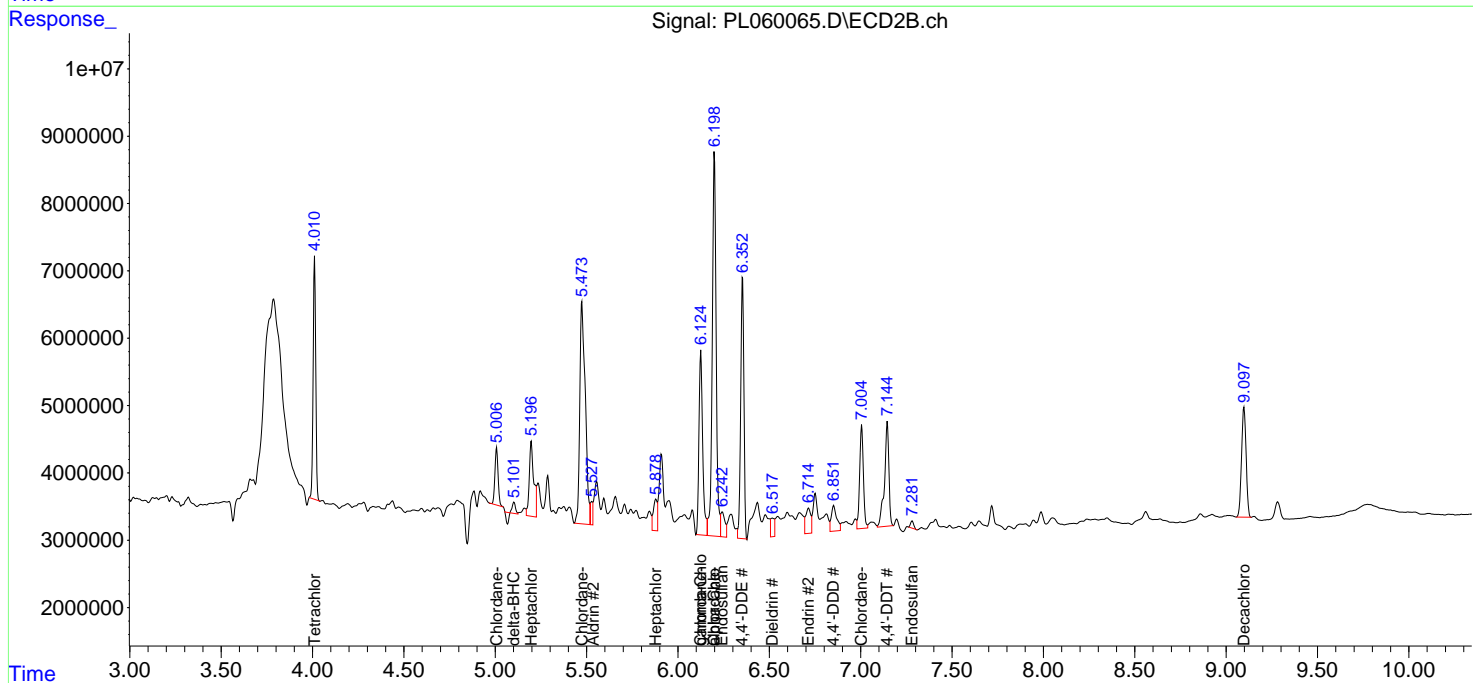
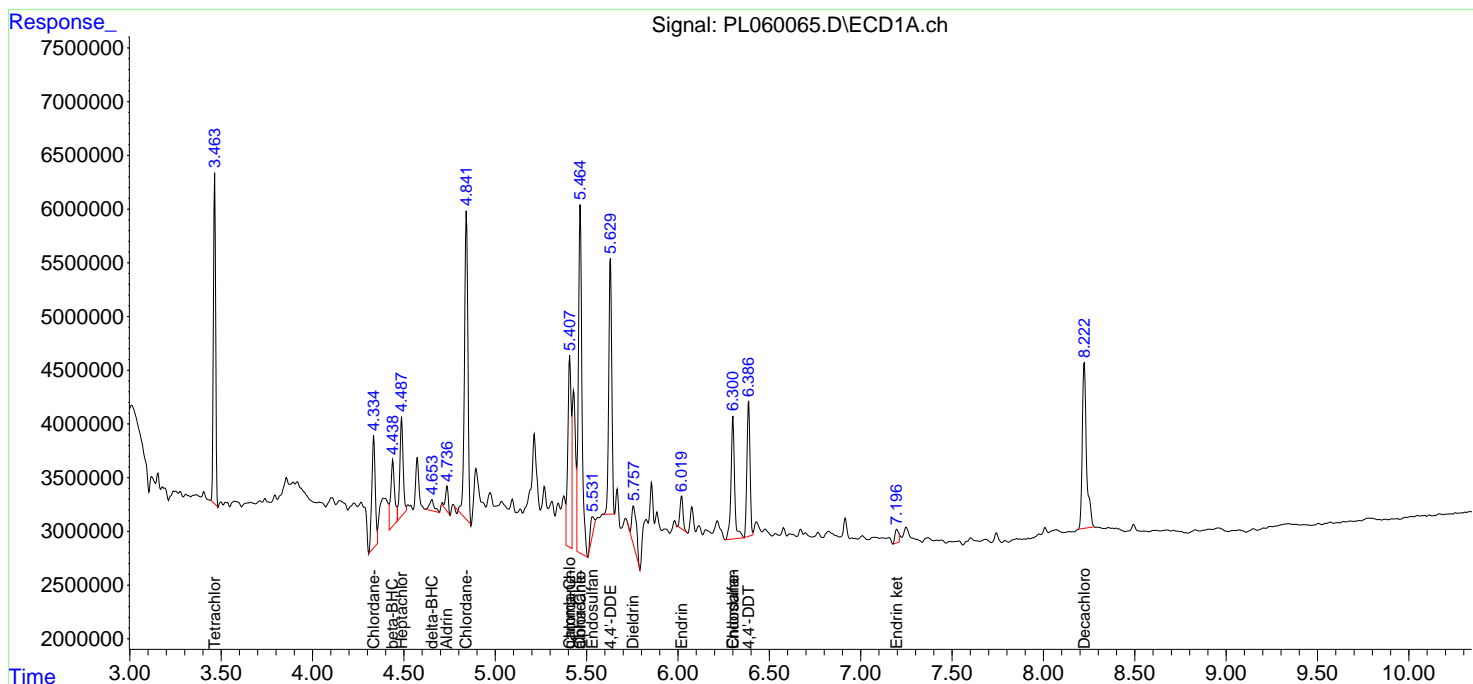
(f)=RT Delta > 1/2 Window (#)=Amounts differ by > 25% (m)=manual int.

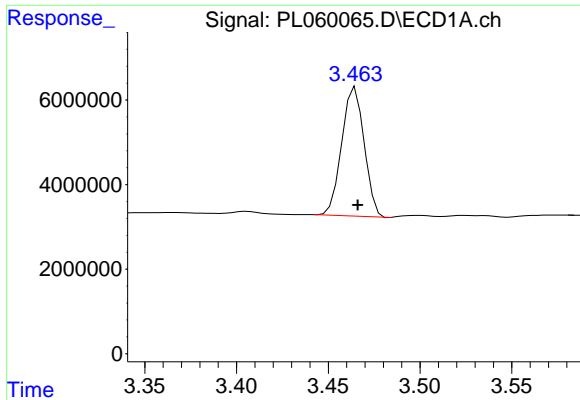
Data Path : Z:\pestpcbsrv\HPCHEM1\ECD_L\Data\PL072120\
 Data File : PL060065.D
 Signal(s) : Signal #1: ECD1A.ch Signal #2: ECD2B.ch
 Acq On : 21 Jul 2020 14:00
 Operator : DD\AJ
 Sample : L3360-01
 Misc :
 ALS Vial : 18 Sample Multiplier: 1

Instrument :
 ECD_L
 ClientSampled :
 SP-1A

Integration File signal 1: autoint1.e
 Integration File signal 2: autoint2.e
 Quant Time: Jul 21 15:37:24 2020
 Quant Method : Z:\pestpcbsrv\HPCHEM1\ECD_L\methods\PL071020.M
 Quant Title : GC Extractables
 QLast Update : Fri Jul 10 18:52:06 2020
 Response via : Initial Calibration
 Integrator: ChemStation

Volume Inj. : 1 µl
 Signal #1 Phase : ZB-MR2 Signal #2 Phase: ZB-MR1
 Signal #1 Info : 30M x 0.32mm x0.2 Signal #2 Info : 30M x 0.32mm x0.5µm

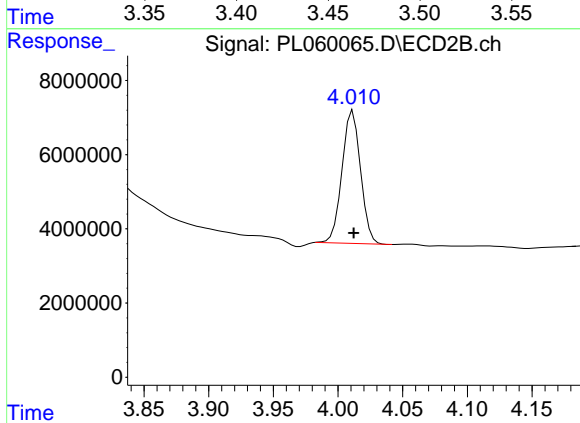




#1 Tetrachloro-m-xylene

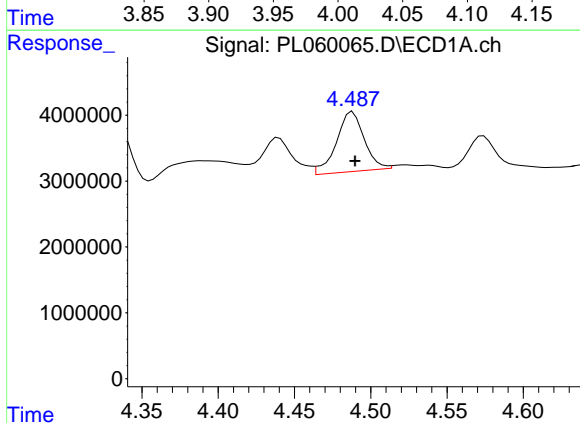
R.T.: 3.465 min
 Delta R.T.: -0.001 min
 Response: 25989427
 Conc: 13.44 ng/ml

Instrument :
 ECD_L
 ClientSampleId :
 SP-1A



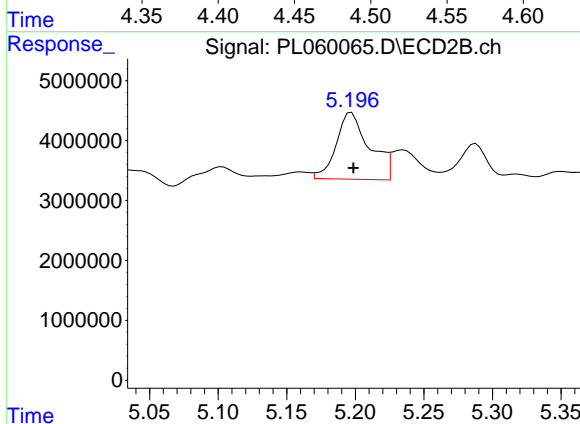
#1 Tetrachloro-m-xylene

R.T.: 4.012 min
 Delta R.T.: 0.000 min
 Response: 35761033
 Conc: 13.49 ng/ml



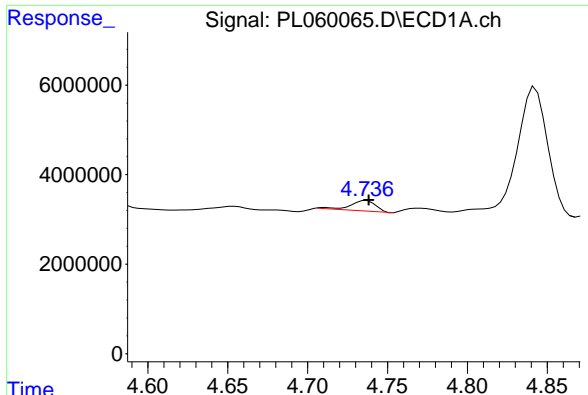
#4 Heptachlor

R.T.: 4.488 min
 Delta R.T.: -0.002 min
 Response: 11575494
 Conc: 5.16 ng/ml



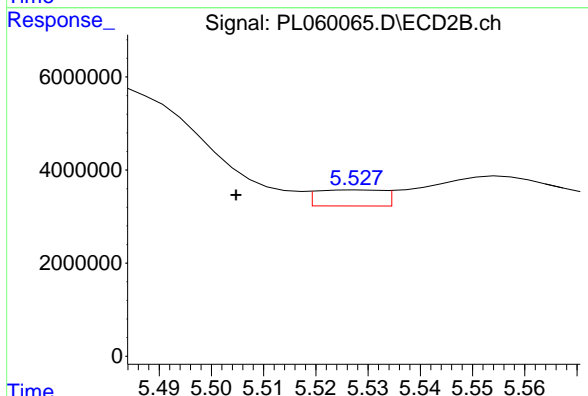
#4 Heptachlor

R.T.: 5.197 min
 Delta R.T.: -0.001 min
 Response: 18758970
 Conc: 5.58 ng/ml

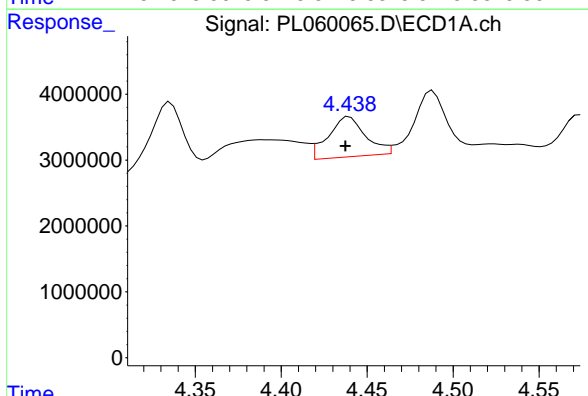


#5 Aldrin
 R.T.: 4.737 min
 Delta R.T.: -0.001 min
 Response: 2594001
 Conc: 1.31 ng/ml

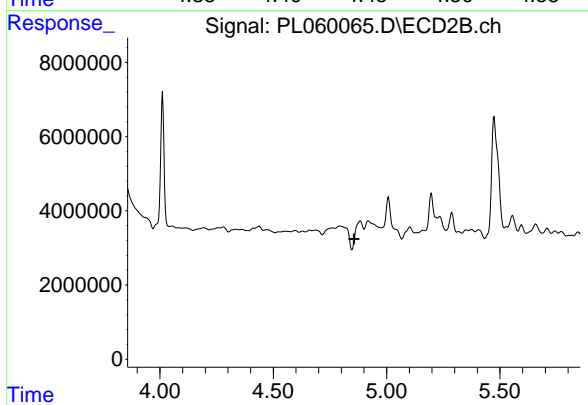
Instrument :
 ECD_L
 ClientSampled :
 SP-1A



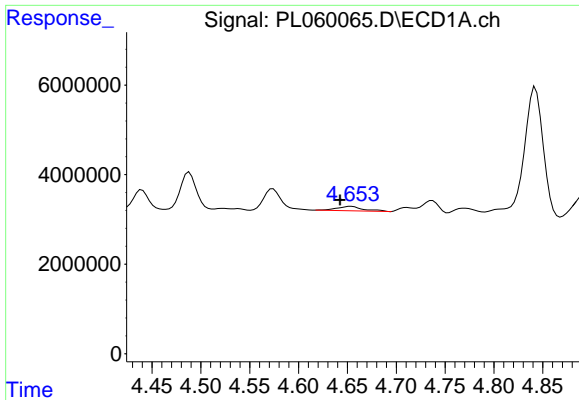
#5 Aldrin
 R.T.: 5.528 min
 Delta R.T.: 0.024 min
 Response: 3058168
 Conc: 0.98 ng/ml



#6 beta-BHC
 R.T.: 4.440 min
 Delta R.T.: 0.002 min
 Response: 9184615
 Conc: 8.99 ng/ml

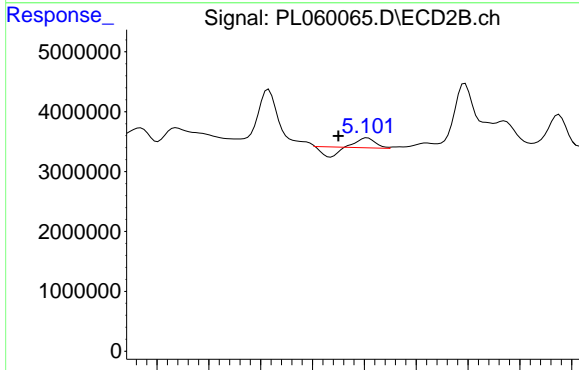


#6 beta-BHC
 R.T.: 4.884 min
 Delta R.T.: 0.027 min
 Response: -1350471
 Conc: N.D.

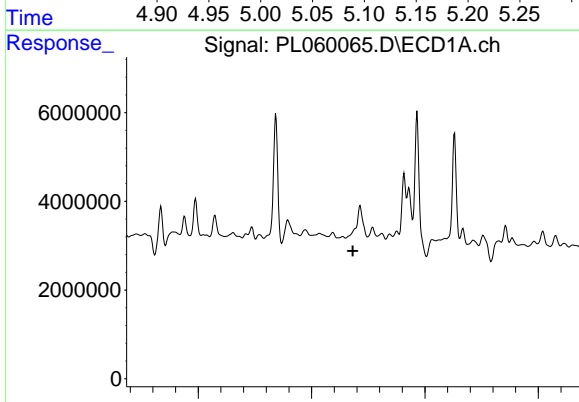


#7 delta-BHC
 R.T.: 4.654 min
 Delta R.T.: 0.012 min
 Response: 1885383
 Conc: 0.85 ng/ml

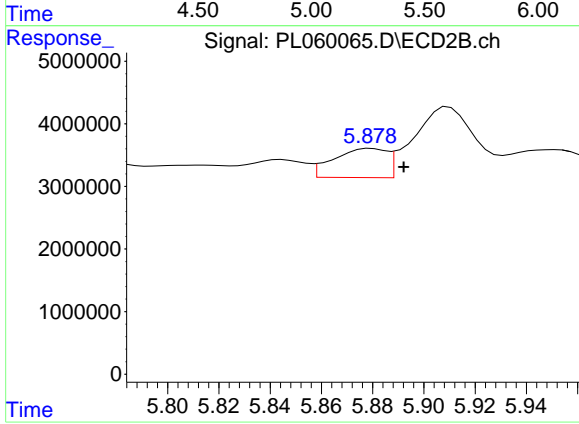
Instrument :
 ECD_L
 ClientSampled :
 SP-1A



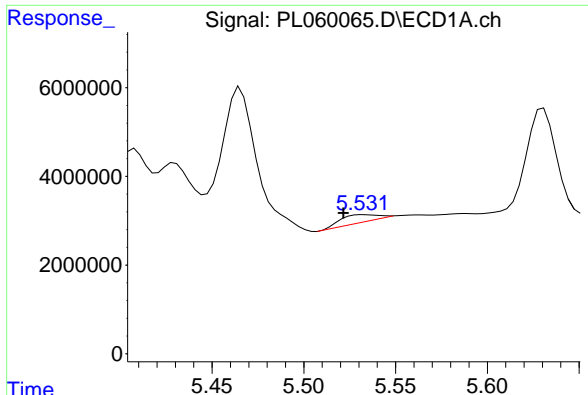
#7 delta-BHC
 R.T.: 5.103 min
 Delta R.T.: 0.028 min
 Response: 699858
 Conc: 0.22 ng/ml



#8 Heptachlor epoxide
 R.T.: 0.000 min
 Exp R.T. : 5.183 min
 Response: 0
 Conc: N.D.

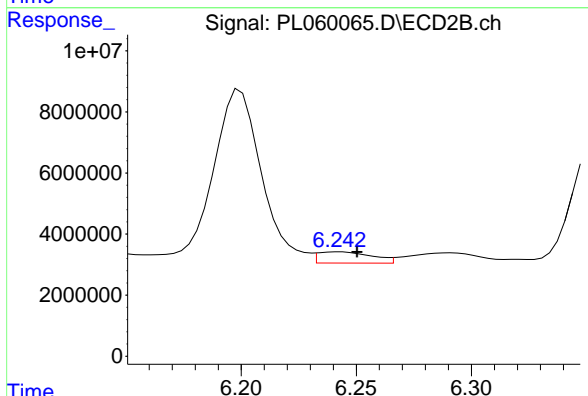


#8 Heptachlor epoxide
 R.T.: 5.879 min
 Delta R.T.: -0.013 min
 Response: 6721034
 Conc: 2.50 ng/ml

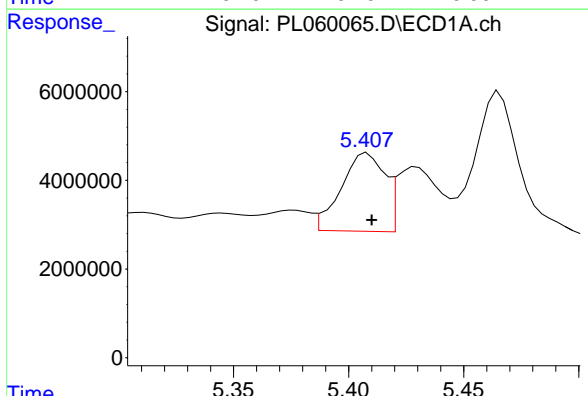


#9 Endosulfan I
 R.T.: 5.533 min
 Delta R.T.: 0.012 min
 Response: 2350935
 Conc: 1.40 ng/ml

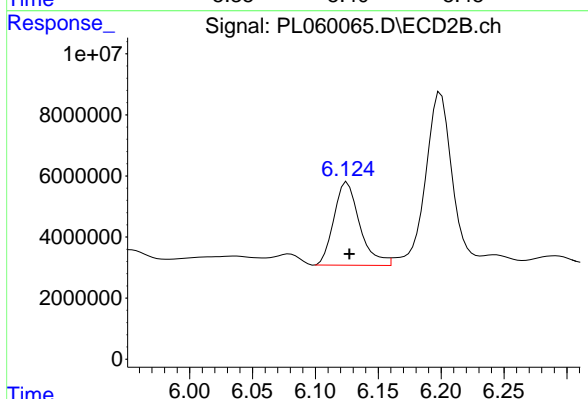
Instrument :
 ECD_L
 ClientSampled :
 SP-1A



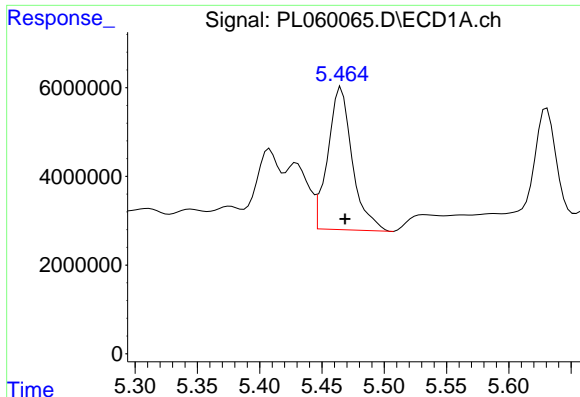
#9 Endosulfan I
 R.T.: 6.243 min
 Delta R.T.: -0.008 min
 Response: 6010065
 Conc: 2.25 ng/ml



#10 gamma-Chlordane
 R.T.: 5.408 min
 Delta R.T.: -0.002 min
 Response: 23367078
 Conc: 12.88 ng/ml



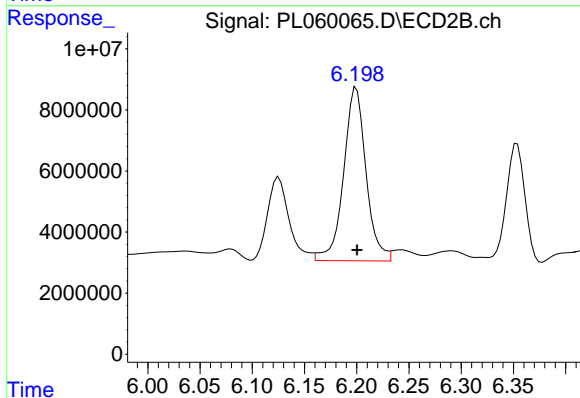
#10 gamma-Chlordane
 R.T.: 6.125 min
 Delta R.T.: -0.002 min
 Response: 38919422
 Conc: 13.59 ng/ml



#11 alpha-Chlordane

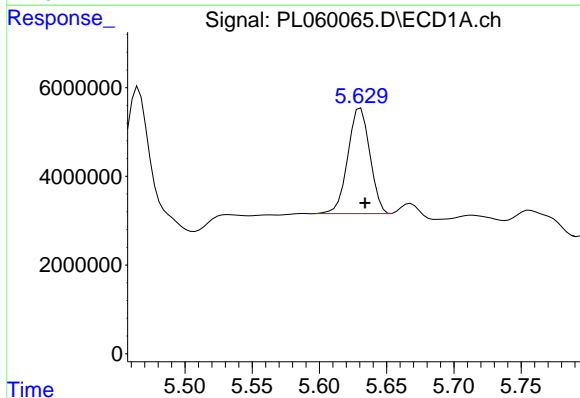
R.T.: 5.466 min
 Delta R.T.: -0.003 min
 Response: 43990451
 Conc: 24.39 ng/ml

Instrument :
 ECD_L
 ClientSampled :
 SP-1A



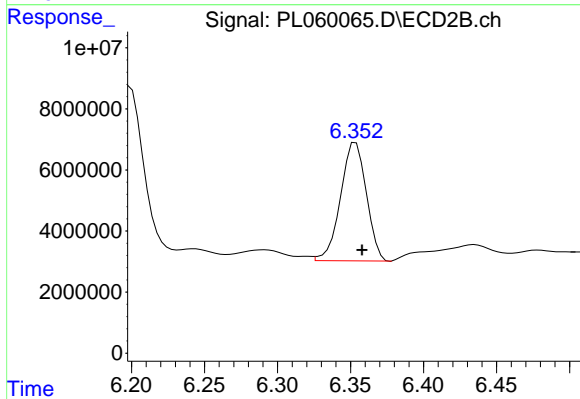
#11 alpha-Chlordane

R.T.: 6.200 min
 Delta R.T.: 0.000 min
 Response: 84866429
 Conc: 29.68 ng/ml



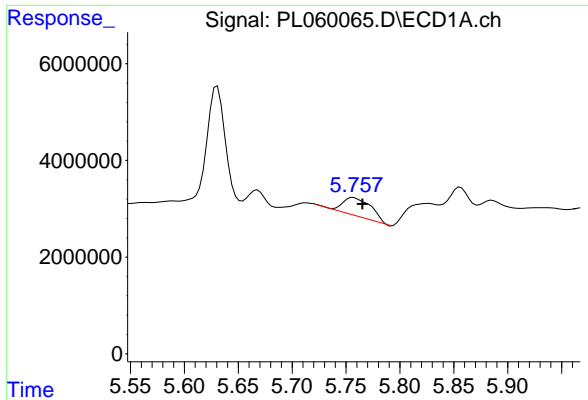
#12 4,4'-DDE

R.T.: 5.631 min
 Delta R.T.: -0.003 min
 Response: 27070155
 Conc: 16.26 ng/ml



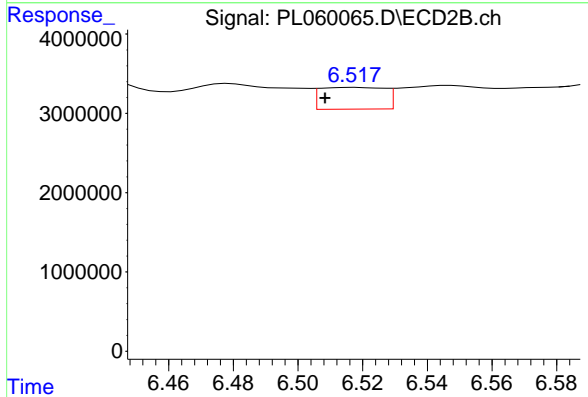
#12 4,4'-DDE

R.T.: 6.354 min
 Delta R.T.: -0.004 min
 Response: 47684175
 Conc: 17.81 ng/ml

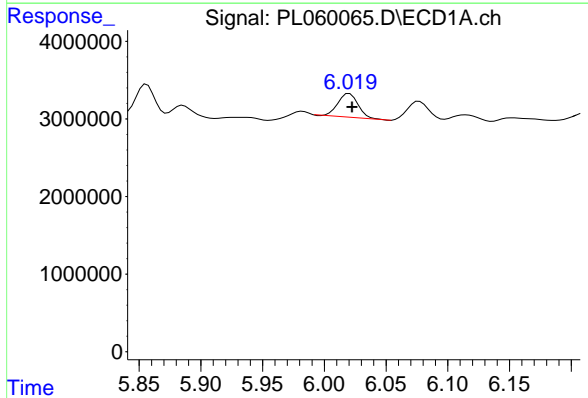


#13 Dieldrin
 R.T.: 5.757 min
 Delta R.T.: -0.009 min
 Response: 7196947
 Conc: 4.08 ng/ml

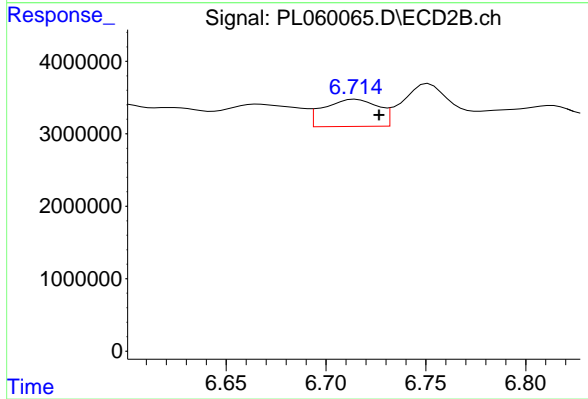
Instrument :
 ECD_L
 ClientSampleId :
 SP-1A



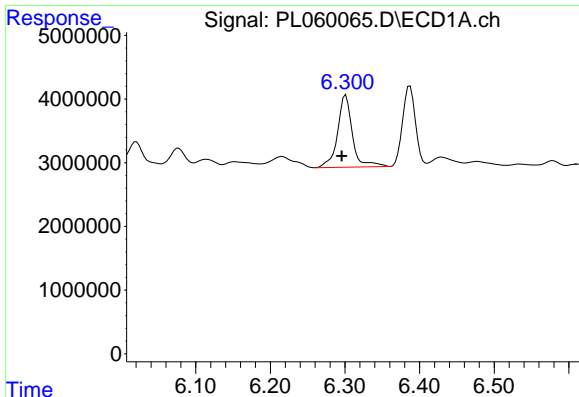
#13 Dieldrin
 R.T.: 6.518 min
 Delta R.T.: 0.009 min
 Response: 3815362
 Conc: 1.38 ng/ml



#14 Endrin
 R.T.: 6.020 min
 Delta R.T.: -0.002 min
 Response: 3488200
 Conc: 2.40 ng/ml

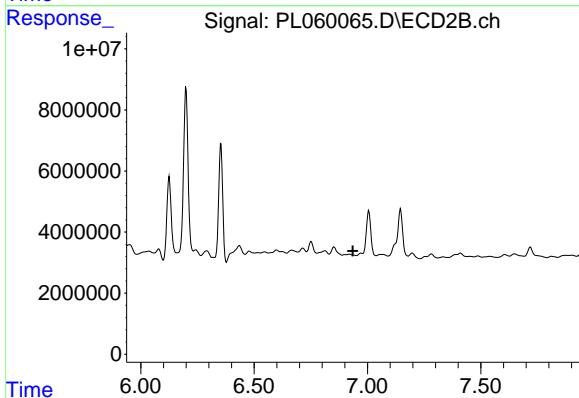


#14 Endrin
 R.T.: 6.715 min
 Delta R.T.: -0.012 min
 Response: 7115538
 Conc: 3.34 ng/ml

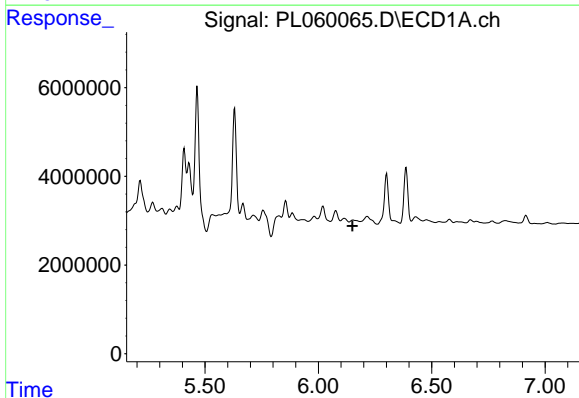


#15 Endosulfan II
 R.T.: 6.301 min
 Delta R.T.: 0.005 min
 Response: 15594116
 Conc: 9.34 ng/ml

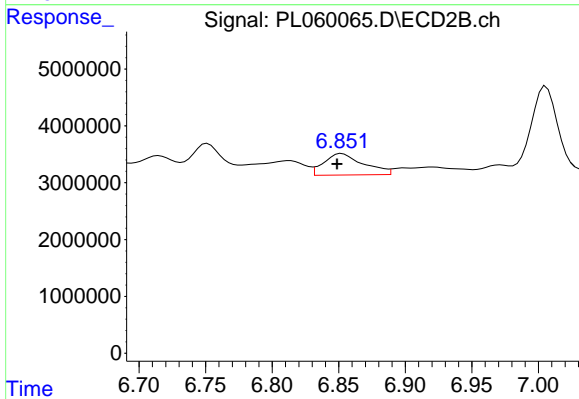
Instrument :
 ECD_L
 ClientSampled :
 SP-1A



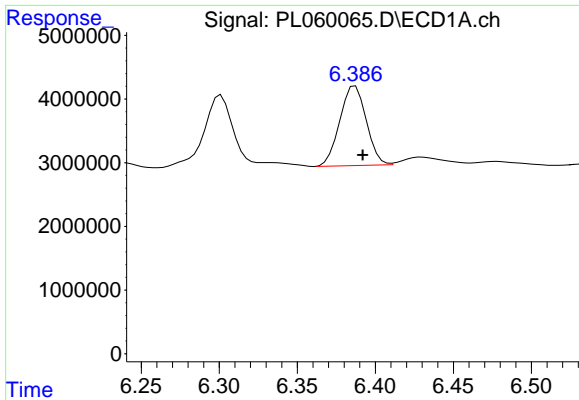
#15 Endosulfan II
 R.T.: 0.000 min
 Exp R.T. : 6.936 min
 Response: 0
 Conc: N.D.



#16 4,4'-DDD
 R.T.: 0.000 min
 Exp R.T. : 6.151 min
 Response: 0
 Conc: N.D.

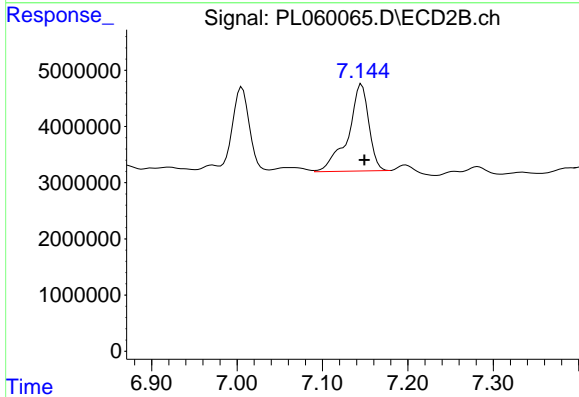


#16 4,4'-DDD
 R.T.: 6.852 min
 Delta R.T.: 0.003 min
 Response: 7790420
 Conc: 3.39 ng/ml

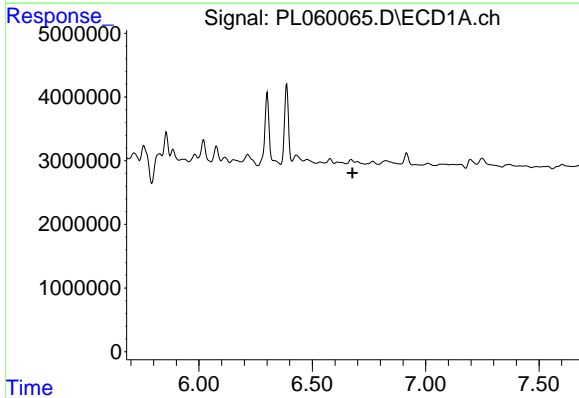


#17 4,4'-DDT
 R.T.: 6.387 min
 Delta R.T.: -0.005 min
 Response: 14782009
 Conc: 11.37 ng/ml

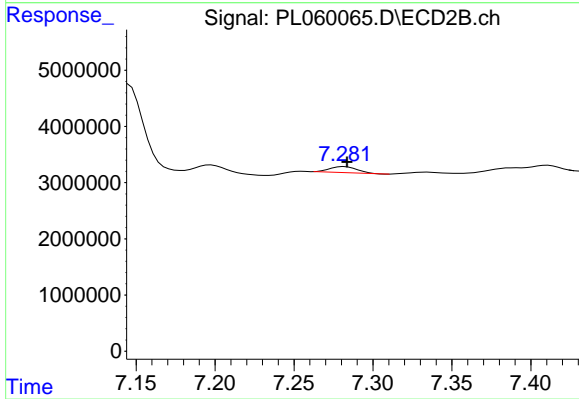
Instrument :
 ECD_L
 ClientSampled :
 SP-1A



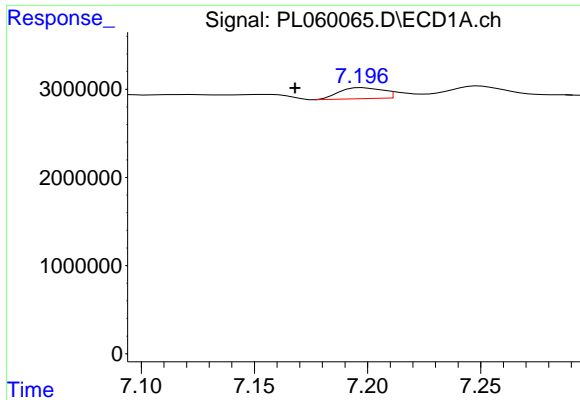
#17 4,4'-DDT
 R.T.: 7.146 min
 Delta R.T.: -0.003 min
 Response: 26027148
 Conc: 13.22 ng/ml



#19 Endosulfan Sulfate
 R.T.: 0.000 min
 Exp R.T. : 6.678 min
 Response: 0
 Conc: N.D.

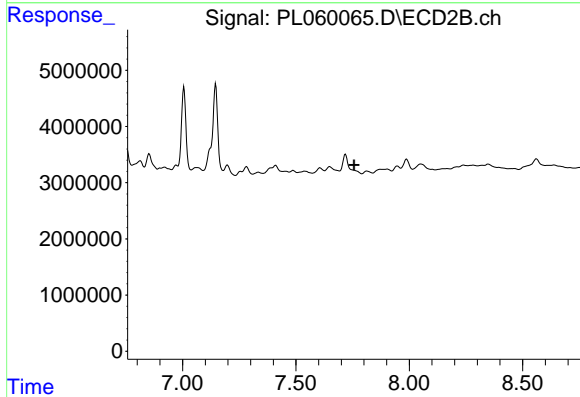


#19 Endosulfan Sulfate
 R.T.: 7.282 min
 Delta R.T.: -0.002 min
 Response: 1292799
 Conc: 0.55 ng/ml

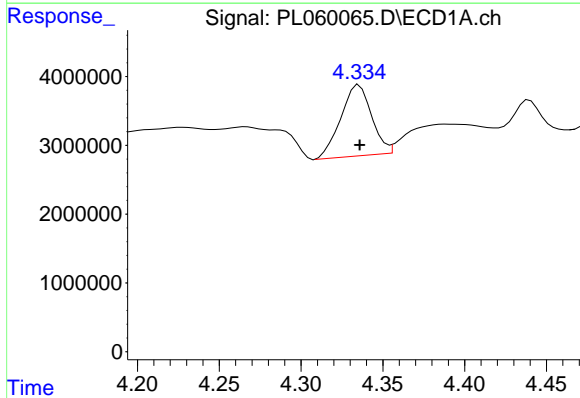


#21 Endrin ketone
 R.T.: 7.198 min
 Delta R.T.: 0.030 min
 Response: 1673710
 Conc: 0.89 ng/ml

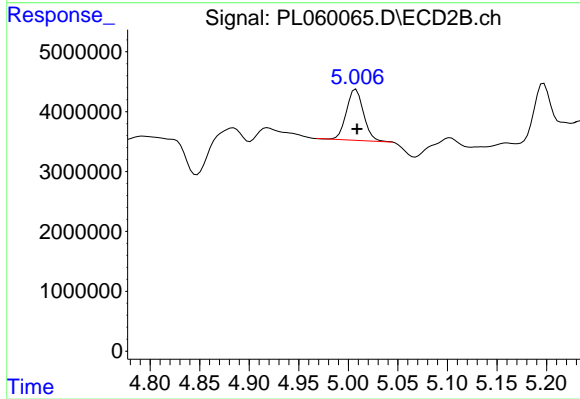
Instrument :
 ECD_L
 ClientSampled :
 SP-1A



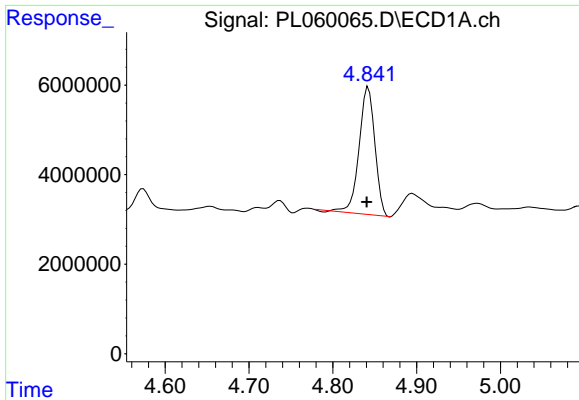
#21 Endrin ketone
 R.T.: 0.000 min
 Exp R.T. : 7.756 min
 Response: 0
 Conc: N.D.



#23 Chlordane-1
 R.T.: 4.336 min
 Delta R.T.: 0.000 min
 Response: 13465196
 Conc: 219.78 ng/ml



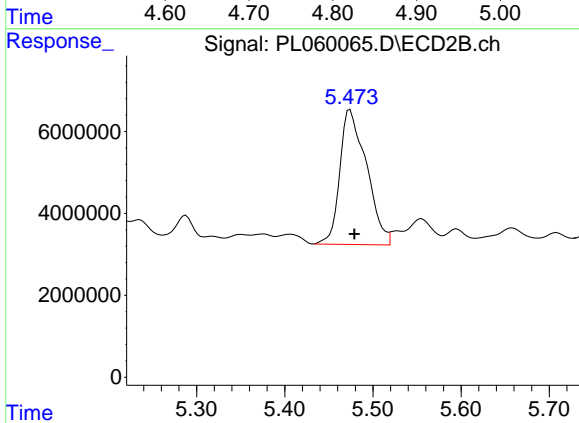
#23 Chlordane-1
 R.T.: 5.008 min
 Delta R.T.: -0.001 min
 Response: 10210815
 Conc: 105.15 ng/ml



#24 Chlordane-2

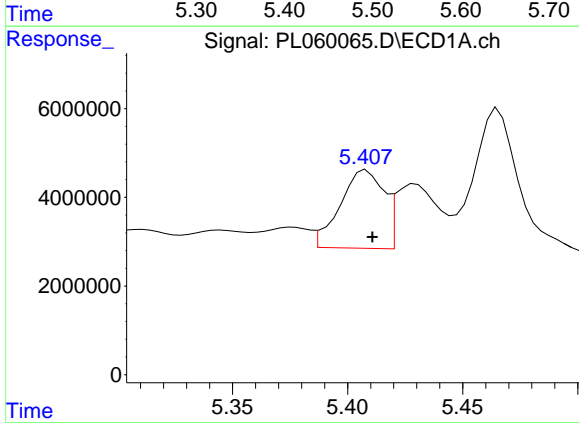
R.T.: 4.843 min
 Delta R.T.: 0.002 min
 Response: 36978060
 Conc: 584.03 ng/ml

Instrument :
 ECD_L
 ClientSampleId :
 SP-1A



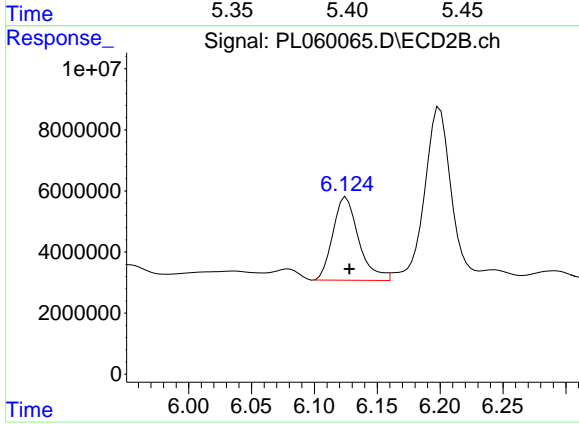
#24 Chlordane-2

R.T.: 5.474 min
 Delta R.T.: -0.005 min
 Response: 69174241
 Conc: 603.75 ng/ml



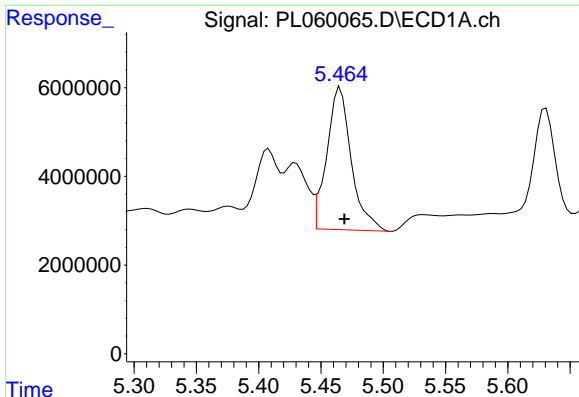
#25 Chlordane-3

R.T.: 5.408 min
 Delta R.T.: -0.003 min
 Response: 23367078
 Conc: 138.17 ng/ml



#25 Chlordane-3

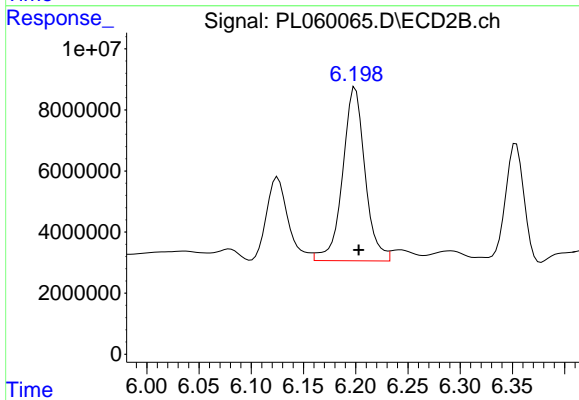
R.T.: 6.125 min
 Delta R.T.: -0.002 min
 Response: 38919422
 Conc: 100.59 ng/ml



#26 Chlordane-4

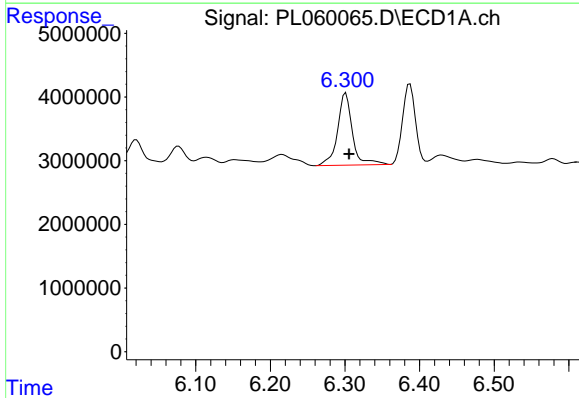
R.T.: 5.466 min
 Delta R.T.: -0.003 min
 Response: 43990451
 Conc: 315.30 ng/ml

Instrument :
 ECD_L
 ClientSampled :
 SP-1A



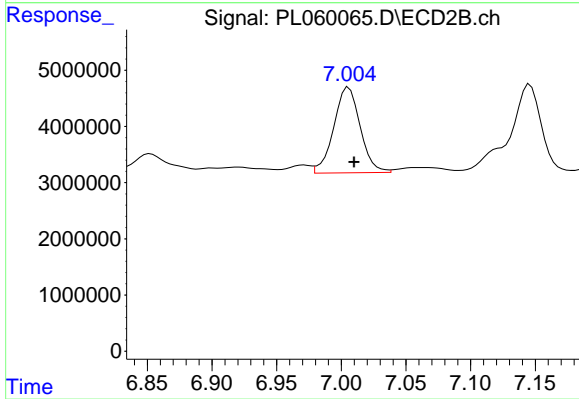
#26 Chlordane-4

R.T.: 6.200 min
 Delta R.T.: -0.003 min
 Response: 84866429
 Conc: 183.34 ng/ml



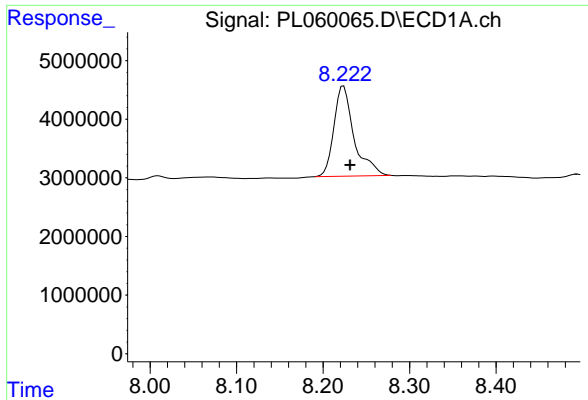
#27 Chlordane-5

R.T.: 6.301 min
 Delta R.T.: -0.005 min
 Response: 15594116
 Conc: 274.83 ng/ml



#27 Chlordane-5

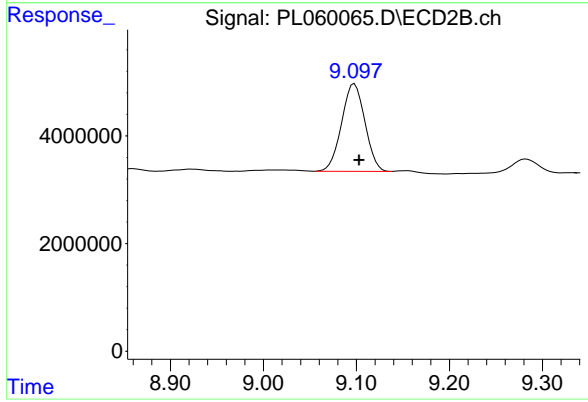
R.T.: 7.006 min
 Delta R.T.: -0.004 min
 Response: 21740251
 Conc: 279.92 ng/ml



#28 Decachlorobiphenyl

R.T.: 8.224 min
Delta R.T.: -0.007 min
Response: 24878852
Conc: 15.12 ng/ml

Instrument :
ECD_L
ClientSampleId :
SP-1A



#28 Decachlorobiphenyl

R.T.: 9.098 min
Delta R.T.: -0.005 min
Response: 28332282
Conc: 13.55 ng/ml