

Data Path : Z:\pestpcbsrv\HPCHEM1\ECD\_L\Data\PL072120\  
 Data File : PL060070.D  
 Signal(s) : Signal #1: ECD1A.ch Signal #2: ECD2B.ch  
 Acq On : 21 Jul 2020 15:11  
 Operator : DD\AJ  
 Sample : I.BLK  
 Misc :  
 ALS Vial : 2 Sample Multiplier: 1

Instrument :  
 ECD\_L  
 ClientSampleId :  
 I.BLK

Integration File signal 1: autoint1.e  
 Integration File signal 2: autoint2.e  
 Quant Time: Jul 21 15:43:19 2020  
 Quant Method : Z:\pestpcbsrv\HPCHEM1\ECD\_L\methods\PL071020.M  
 Quant Title : GC Extractables  
 QLast Update : Fri Jul 10 18:52:06 2020  
 Response via : Initial Calibration  
 Integrator: ChemStation

Volume Inj. : 1 µl  
 Signal #1 Phase : ZB-MR2 Signal #2 Phase: ZB-MR1  
 Signal #1 Info : 30M x 0.32mm x0.2 Signal #2 Info : 30M x 0.32mm x0.5µm

Compound	RT#1	RT#2	Resp#1	Resp#2	ng/ml	ng/ml
-----						
System Monitoring Compounds						
1) SA Tetrachlo...	3.465	4.012	43449512	58689221	22.463	22.145
28) SA Decachlor...	8.224	9.099	30095703	37433169	18.294	17.899
Target Compounds						
4) MA Heptachlor	0.000	5.199	0	2871676	N.D.	0.854 #
-----						

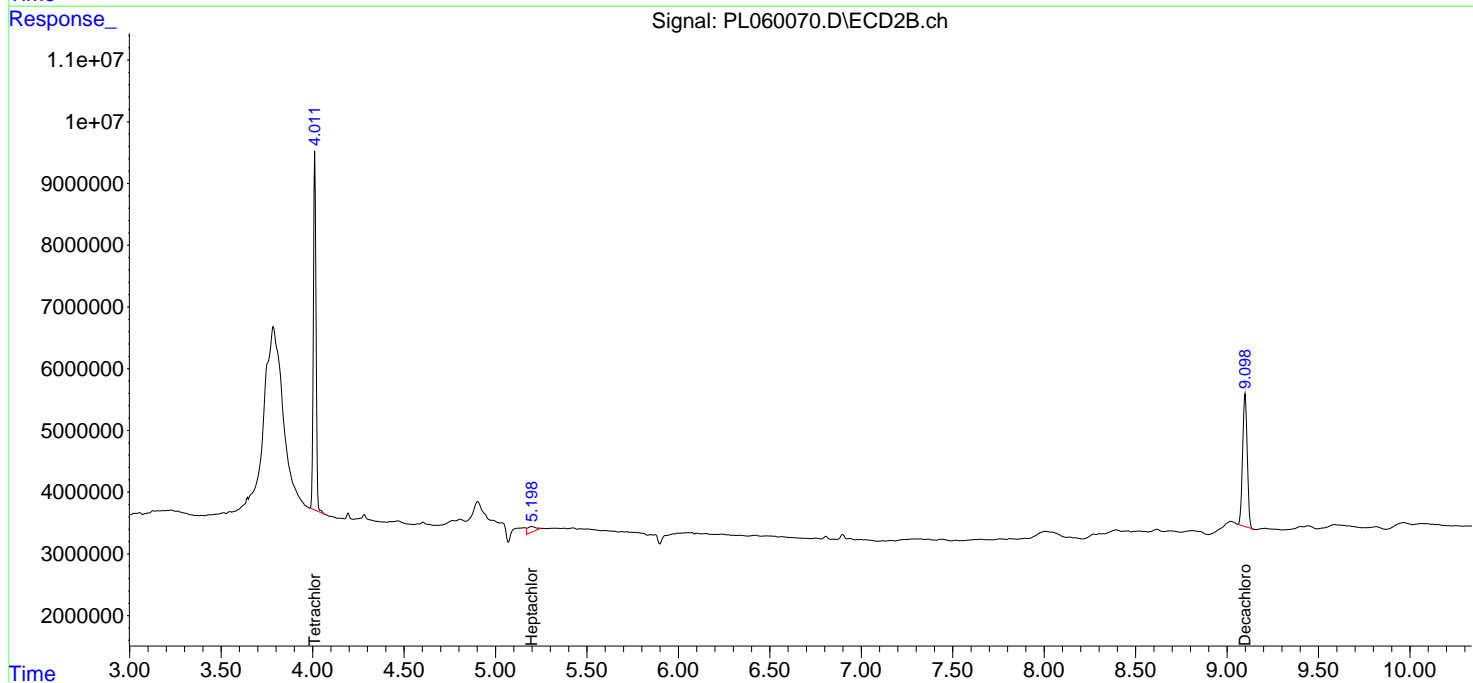
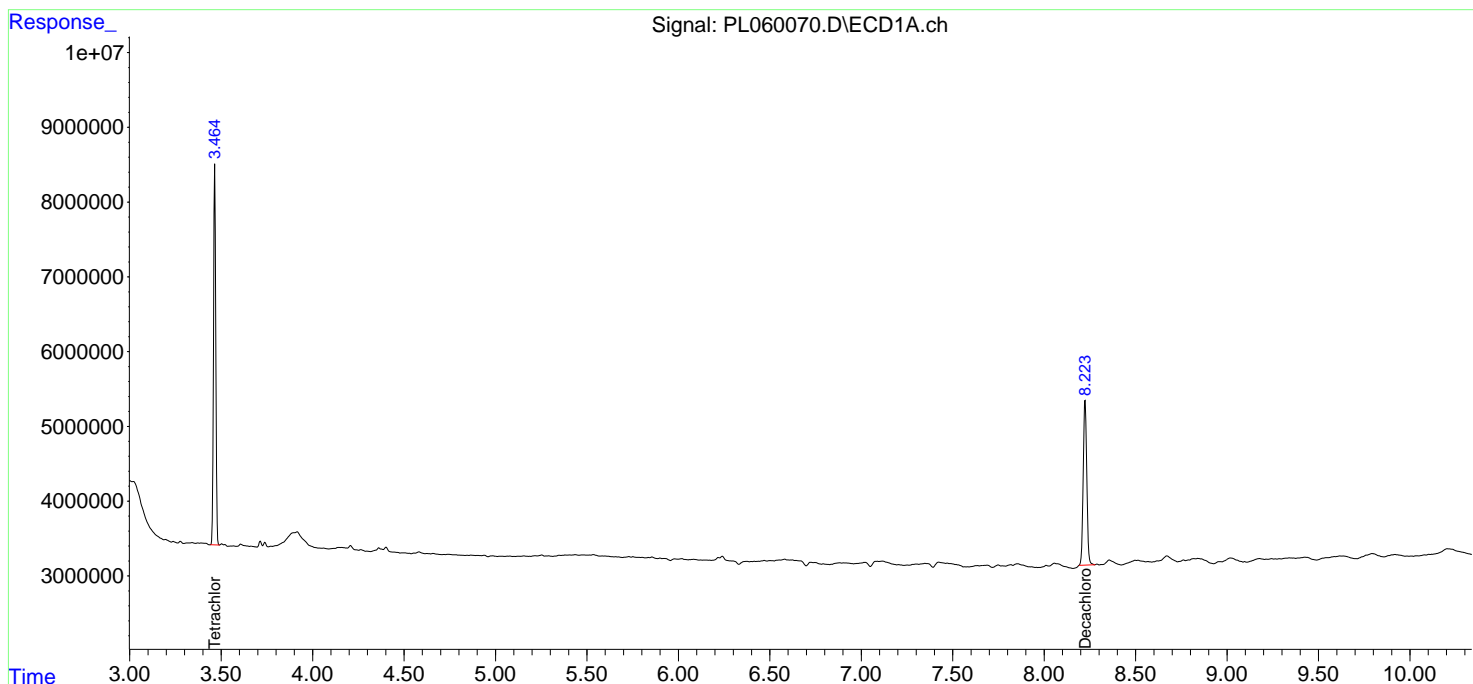
(f)=RT Delta > 1/2 Window (#)=Amounts differ by > 25% (m)=manual int.

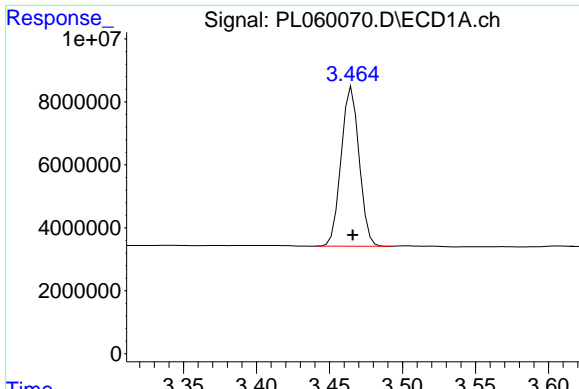
Data Path : Z:\pestpcbsrv\HPCHEM1\ECD\_L\Data\PL072120\  
 Data File : PL060070.D  
 Signal(s) : Signal #1: ECD1A.ch Signal #2: ECD2B.ch  
 Acq On : 21 Jul 2020 15:11  
 Operator : DD\AJ  
 Sample : I.BLK  
 Misc :  
 ALS Vial : 2 Sample Multiplier: 1

Instrument :  
 ECD\_L  
 ClientSampleId :  
 I.BLK

Integration File signal 1: autoint1.e  
 Integration File signal 2: autoint2.e  
 Quant Time: Jul 21 15:43:19 2020  
 Quant Method : Z:\pestpcbsrv\HPCHEM1\ECD\_L\methods\PL071020.M  
 Quant Title : GC Extractables  
 QLast Update : Fri Jul 10 18:52:06 2020  
 Response via : Initial Calibration  
 Integrator: ChemStation

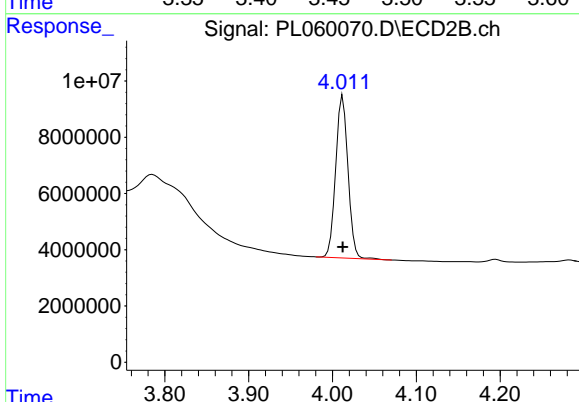
Volume Inj. : 1 µl  
 Signal #1 Phase : ZB-MR2 Signal #2 Phase: ZB-MR1  
 Signal #1 Info : 30M x 0.32mm x0.2 Signal #2 Info : 30M x 0.32mm x0.5µm



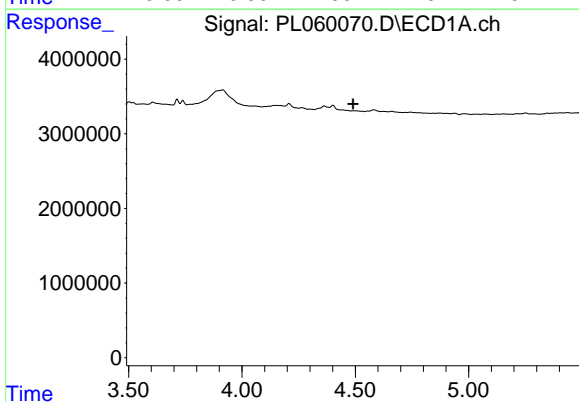


#1 Tetrachloro-m-xylene  
 R.T.: 3.465 min  
 Delta R.T.: 0.000 min  
 Response: 43449512  
 Conc: 22.46 ng/ml

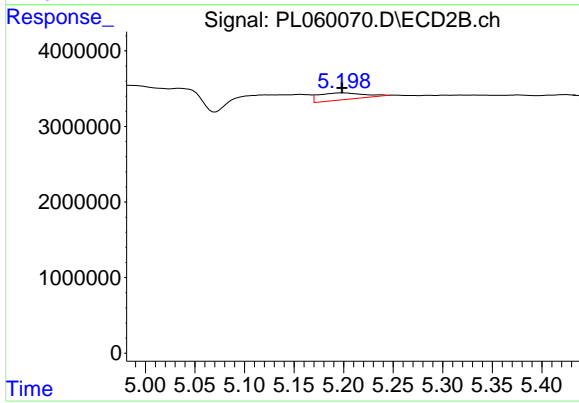
Instrument :  
 ECD\_L  
 ClientSampleId :  
 I.BLK



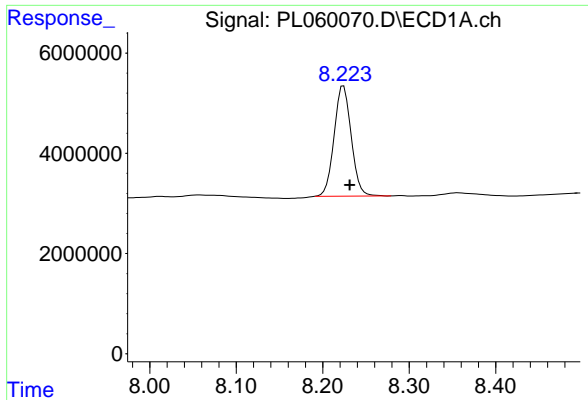
#1 Tetrachloro-m-xylene  
 R.T.: 4.012 min  
 Delta R.T.: 0.000 min  
 Response: 58689221  
 Conc: 22.15 ng/ml



#4 Heptachlor  
 R.T.: 0.000 min  
 Exp R.T. : 4.490 min  
 Response: 0  
 Conc: N.D.



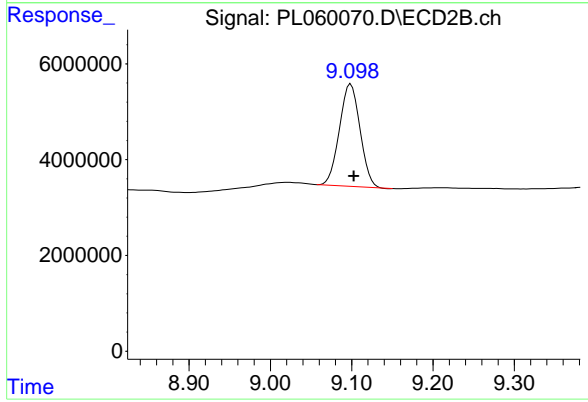
#4 Heptachlor  
 R.T.: 5.199 min  
 Delta R.T.: 0.000 min  
 Response: 2871676  
 Conc: 0.85 ng/ml



#28 Decachlorobiphenyl

R.T.: 8.224 min  
Delta R.T.: -0.007 min  
Response: 30095703  
Conc: 18.29 ng/ml

Instrument :  
ECD\_L  
ClientSampleId :  
I.BLK



#28 Decachlorobiphenyl

R.T.: 9.099 min  
Delta R.T.: -0.004 min  
Response: 37433169  
Conc: 17.90 ng/ml