

Data Path : Z:\pestpcbsrv\HPCHEM1\ECD_L\Data\PL072125\
 Data File : PL096502CC-10.D
 Signal(s) : Signal #1: ECD1A.ch Signal #2: ECD2B.ch
 Acq On : 21 Jul 2025 21:12
 Operator : AR\AJ
 Sample : PSTDCCC050
 Misc :
 ALS Vial : 4 Sample Multiplier: 1

Instrument :
 ECD_L
 ClientSampleId :

Integration File signal 1: autoint1.e
 Integration File signal 2: autoint2.e
 Quant Time: Jul 22 01:50:47 2025
 Quant Method : Z:\pestpcbsrv\HPCHEM1\ECD_L\methods\PL070725.M
 Quant Title : GC Extractables
 QLast Update : Mon Jul 07 15:22:07 2025
 Response via : Initial Calibration
 Integrator: ChemStation

Volume Inj. : 1 µl
 Signal #1 Phase : ZB-MR1 Signal #2 Phase: ZB-MR2
 Signal #1 Info : 30M x 0.32mm x0.5 Signal #2 Info : 30M x 0.32mm x0.25µm

	Compound	RT#1	RT#2	Resp#1	Resp#2	ng/ml	ng/ml

System Monitoring Compounds							
1)	SA Tetrachlo...	3.537	2.829	195.9E6	316.4E6	53.690	54.832
28)	SA Decachlor...	9.020	7.994	132.7E6	229.7E6	47.189	46.068
Target Compounds							
2)	A alpha-BHC	3.984	3.334	281.6E6	474.7E6	54.747	56.285
3)	MA gamma-BHC...	4.313	3.667	268.1E6	433.8E6	53.829	55.074
4)	MA Heptachlor	4.905	4.016	228.3E6	381.2E6	49.828	50.104
5)	MB Aldrin	5.245	4.298	252.9E6	402.0E6	52.329	55.108
6)	B beta-BHC	4.499	3.962	114.6E6	182.8E6	55.129	53.403
7)	B delta-BHC	4.745	4.196	252.5E6	420.9E6	56.337	54.645
8)	Heptachlo...	5.665	4.800	271.1E6	356.0E6	65.333	53.253
9)	A Endosulfan I	6.047	5.172	218.6E6	324.5E6	54.158	45.231
10)	B gamma-Chl...	5.919	5.053	317.9E6	380.2E6	71.856	54.155
11)	B alpha-Chl...	5.999	5.116	240.1E6	372.3E6	54.843	49.509
12)	B 4,4'-DDE	6.169	5.305	190.1E6	339.6E6	51.270	52.533
13)	MA Dieldrin	6.319	5.436	214.7E6	361.3E6	50.784	52.983
14)	MA Endrin	6.545	5.711	164.3E6	329.9E6	52.829	54.113
15)	B Endosulfa...	6.758	6.003	222.9E6	305.5E6	64.239	52.093
16)	A 4,4'-DDD	6.678	5.858	197.5E6	304.3E6	67.813	59.338
17)	MA 4,4'-DDT	6.992	6.111	137.9E6	230.9E6	45.441	40.259
18)	B Endrin al...	6.887	6.181	139.5E6	217.4E6	62.387	48.796
19)	B Endosulfa...	7.120	6.404	153.1E6	292.9E6	50.058	52.084
20)	A Methoxychlor	7.464	6.683	64782686	123.3E6	41.121	40.577
21)	B Endrin ke...	7.600	6.908	165.1E6	322.4E6	49.993	51.559
22)	Mirex	8.079	7.099	133.2E6	237.1E6	47.864	47.726
24)	Chlordane-2	5.245f	4.438	252.9E6	-5908337	1291.986	N.D. #
25)	Chlordane-3	5.919	5.053	317.9E6	380.2E6	431.553	472.508
26)	Chlordane-4	5.999	5.116	240.1E6	372.3E6	267.656	495.486 #
27)	Chlordane-5	0.000	6.003	0	305.5E6	N.D.	1077.667 #

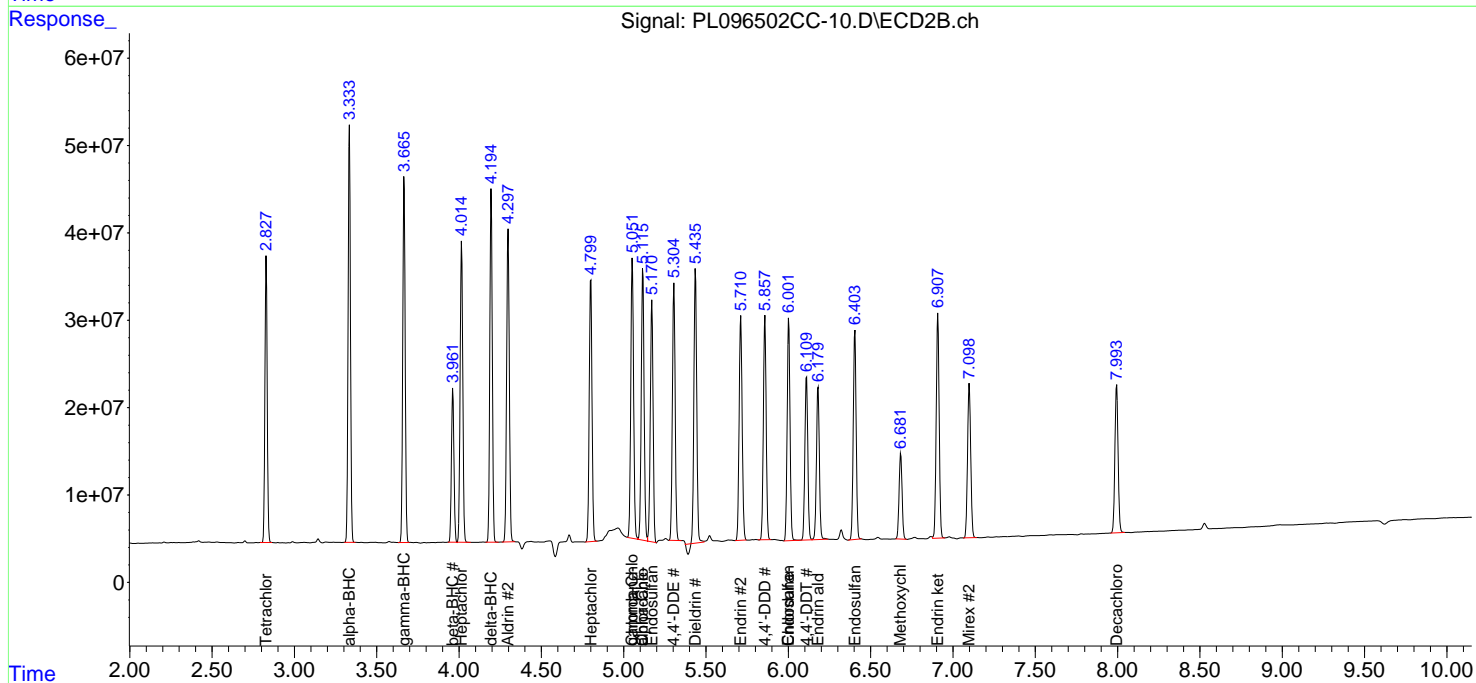
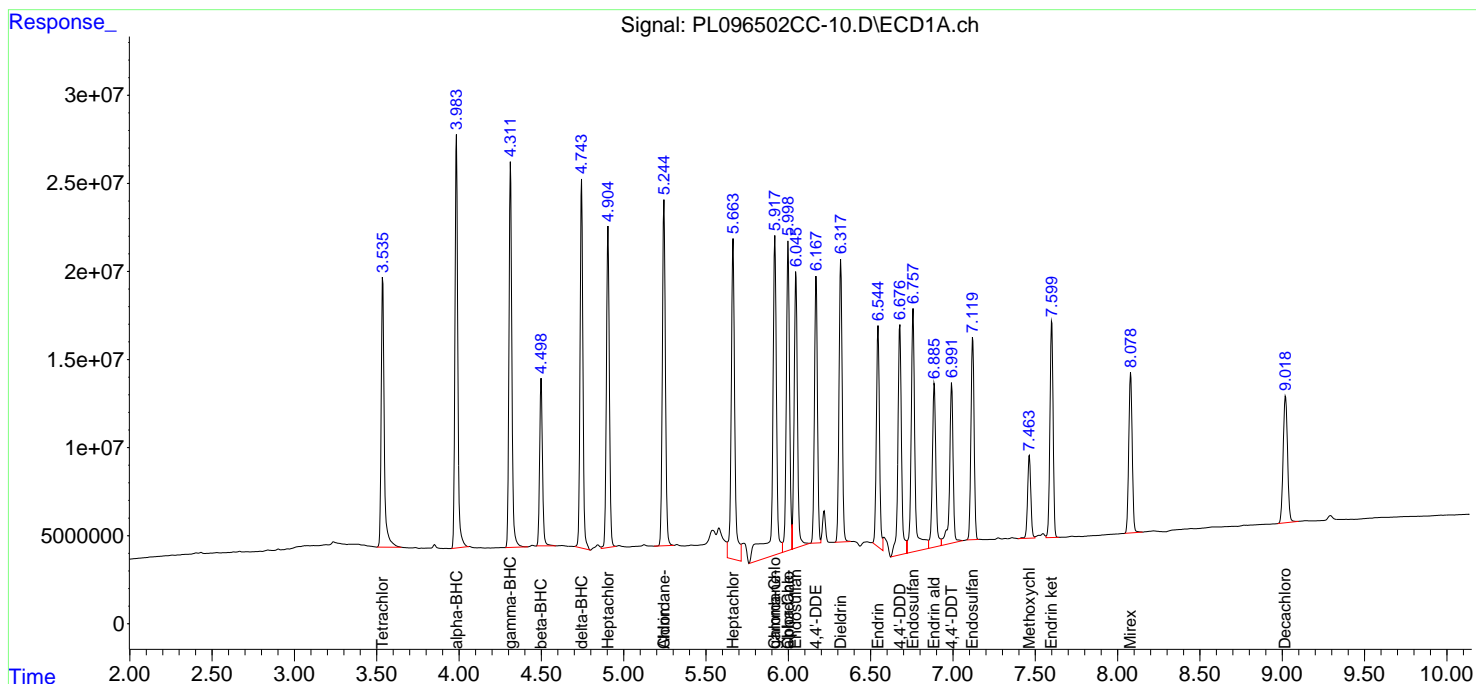
(f)=RT Delta > 1/2 Window (#)=Amounts differ by > 25% (m)=manual int.

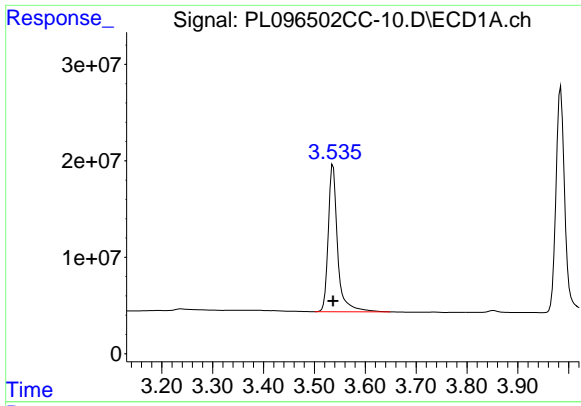
Data Path : Z:\pestpcbsrv\HPCHEM1\ECD_L\Data\PL072125\
 Data File : PL096502CC-10.D
 Signal(s) : Signal #1: ECD1A.ch Signal #2: ECD2B.ch
 Acq On : 21 Jul 2025 21:12
 Operator : AR\AJ
 Sample : PSTDCCC050
 Misc :
 ALS Vial : 4 Sample Multiplier: 1

Instrument :
 ECD_L
 ClientSampleId :

Integration File signal 1: autoint1.e
 Integration File signal 2: autoint2.e
 Quant Time: Jul 22 01:50:47 2025
 Quant Method : Z:\pestpcbsrv\HPCHEM1\ECD_L\methods\PL070725.M
 Quant Title : GC Extractables
 QLast Update : Mon Jul 07 15:22:07 2025
 Response via : Initial Calibration
 Integrator: ChemStation

Volume Inj. : 1 µl
 Signal #1 Phase : ZB-MR1 Signal #2 Phase: ZB-MR2
 Signal #1 Info : 30M x 0.32mm x0.5 Signal #2 Info : 30M x 0.32mm x0.25µm

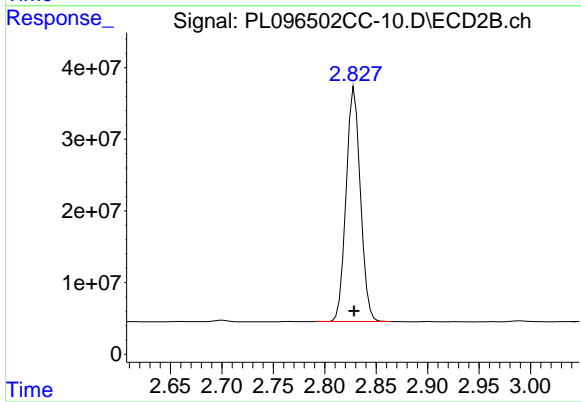




#1 Tetrachloro-m-xylene

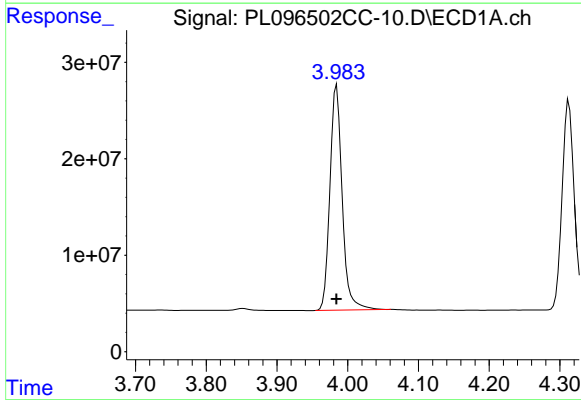
R.T.: 3.537 min
 Delta R.T.: 0.000 min
 Response: 195912916
 Conc: 53.69 ng/ml

Instrument :
 ECD_L
 ClientSampleId :



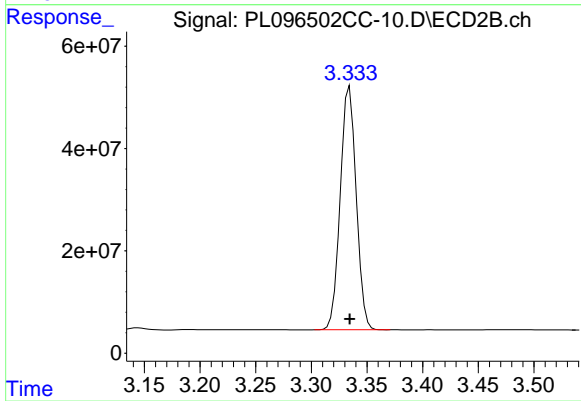
#1 Tetrachloro-m-xylene

R.T.: 2.829 min
 Delta R.T.: 0.000 min
 Response: 316446379
 Conc: 54.83 ng/ml



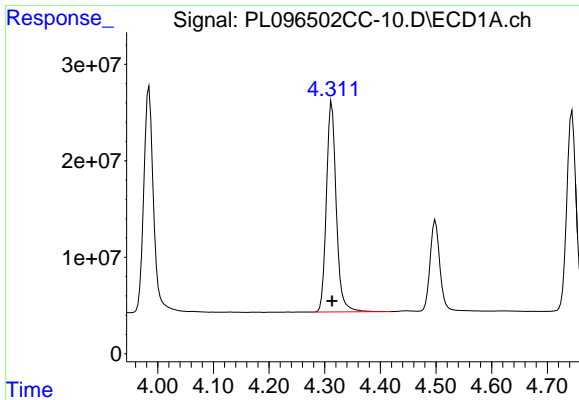
#2 alpha-BHC

R.T.: 3.984 min
 Delta R.T.: 0.000 min
 Response: 281573036
 Conc: 54.75 ng/ml



#2 alpha-BHC

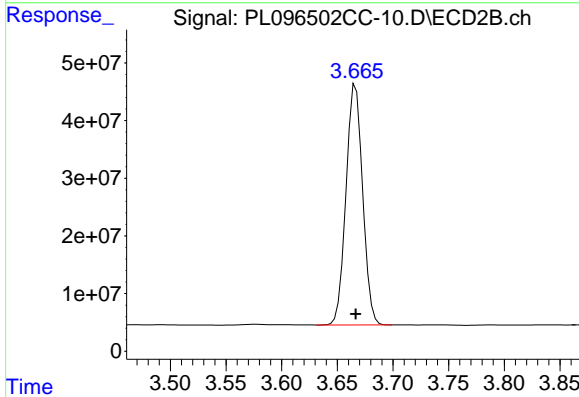
R.T.: 3.334 min
 Delta R.T.: 0.000 min
 Response: 474730195
 Conc: 56.29 ng/ml



#3 gamma-BHC (Lindane)

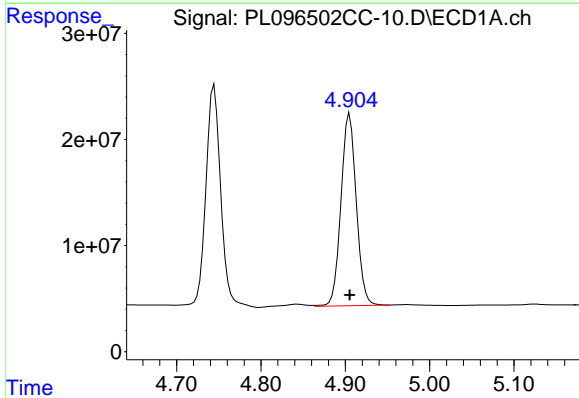
R.T.: 4.313 min
 Delta R.T.: 0.000 min
 Response: 268050049
 Conc: 53.83 ng/ml

Instrument :
 ECD_L
 ClientSampleId :



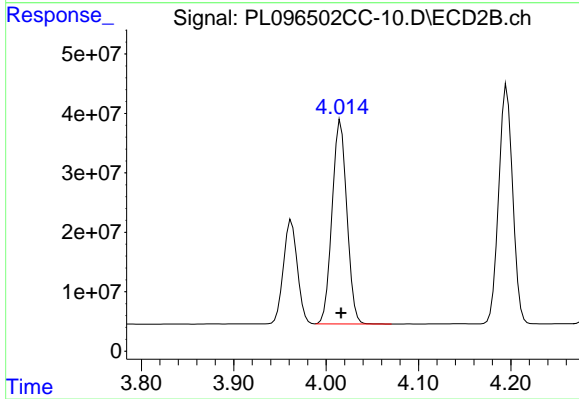
#3 gamma-BHC (Lindane)

R.T.: 3.667 min
 Delta R.T.: 0.000 min
 Response: 433754148
 Conc: 55.07 ng/ml



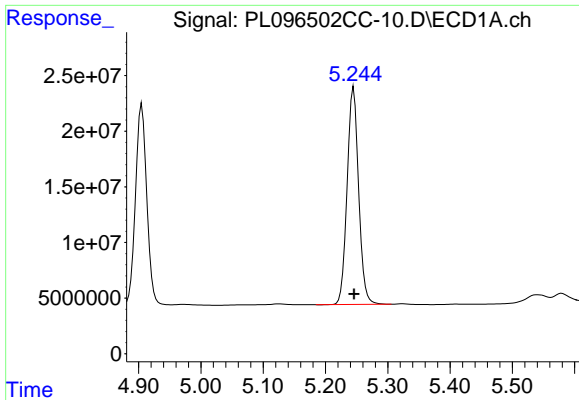
#4 Heptachlor

R.T.: 4.905 min
 Delta R.T.: 0.000 min
 Response: 228275049
 Conc: 49.83 ng/ml



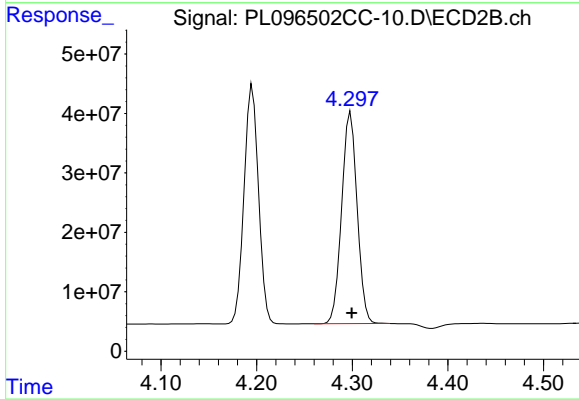
#4 Heptachlor

R.T.: 4.016 min
 Delta R.T.: 0.000 min
 Response: 381178956
 Conc: 50.10 ng/ml

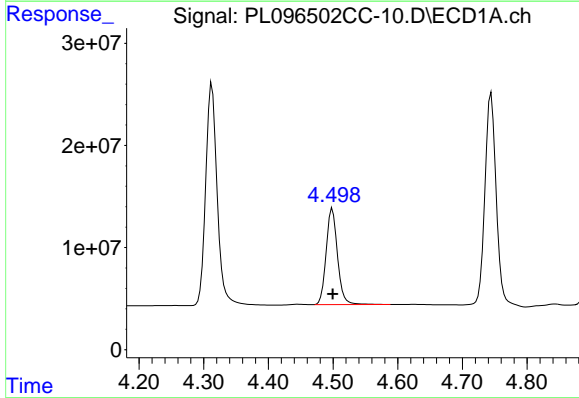


#5 Aldrin
 R.T.: 5.245 min
 Delta R.T.: 0.000 min
 Response: 252945058
 Conc: 52.33 ng/ml

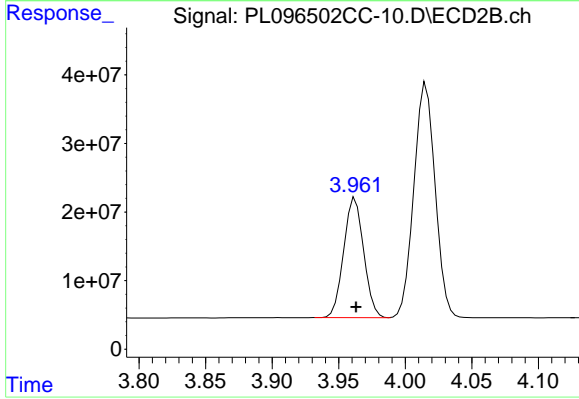
Instrument :
 ECD_L
 ClientSampleId :



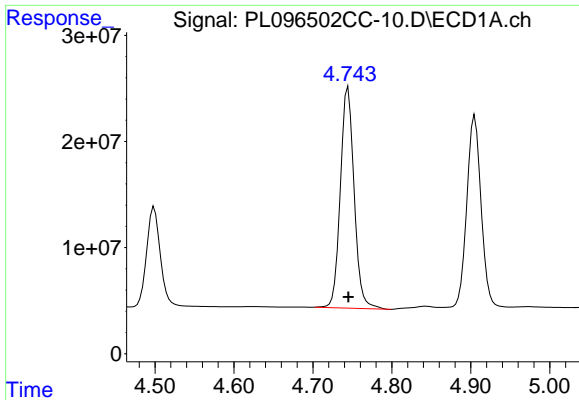
#5 Aldrin
 R.T.: 4.298 min
 Delta R.T.: 0.000 min
 Response: 402045170
 Conc: 55.11 ng/ml



#6 beta-BHC
 R.T.: 4.499 min
 Delta R.T.: 0.000 min
 Response: 114602316
 Conc: 55.13 ng/ml



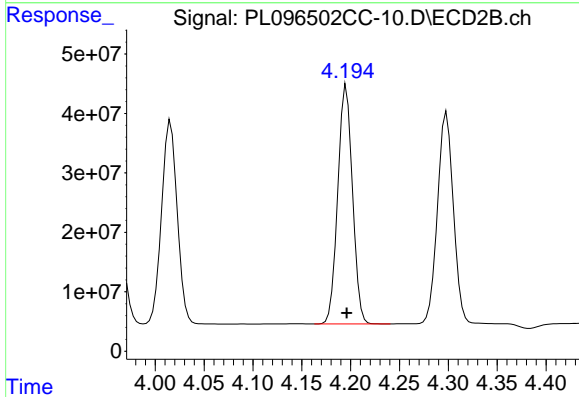
#6 beta-BHC
 R.T.: 3.962 min
 Delta R.T.: 0.000 min
 Response: 182848458
 Conc: 53.40 ng/ml



#7 delta-BHC

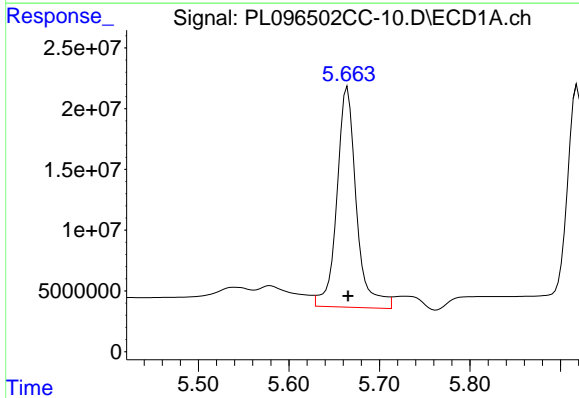
R.T.: 4.745 min
 Delta R.T.: 0.000 min
 Response: 252462406
 Conc: 56.34 ng/ml

Instrument :
 ECD_L
 ClientSampleId :



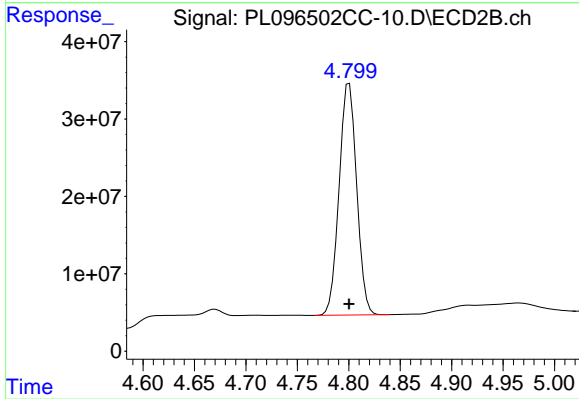
#7 delta-BHC

R.T.: 4.196 min
 Delta R.T.: 0.000 min
 Response: 420868220
 Conc: 54.64 ng/ml



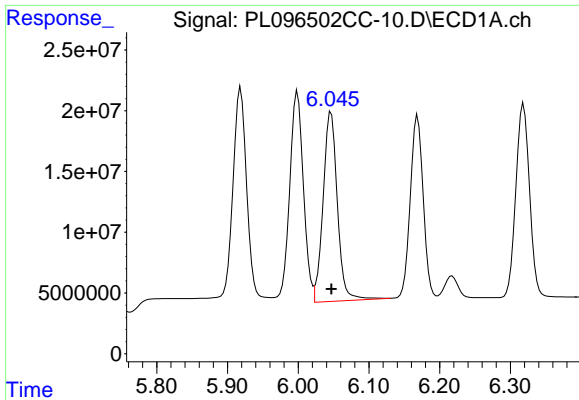
#8 Heptachlor epoxide

R.T.: 5.665 min
 Delta R.T.: 0.000 min
 Response: 271077360
 Conc: 65.33 ng/ml



#8 Heptachlor epoxide

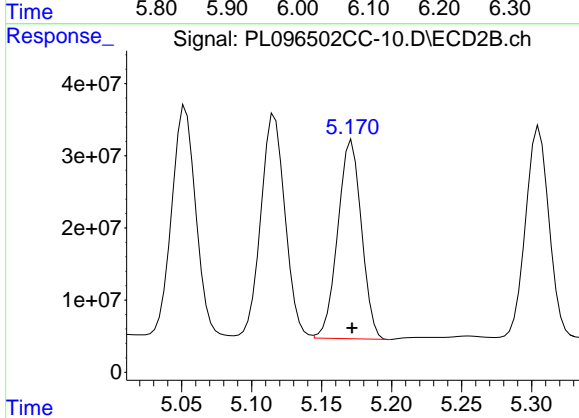
R.T.: 4.800 min
 Delta R.T.: 0.000 min
 Response: 355987651
 Conc: 53.25 ng/ml



#9 Endosulfan I

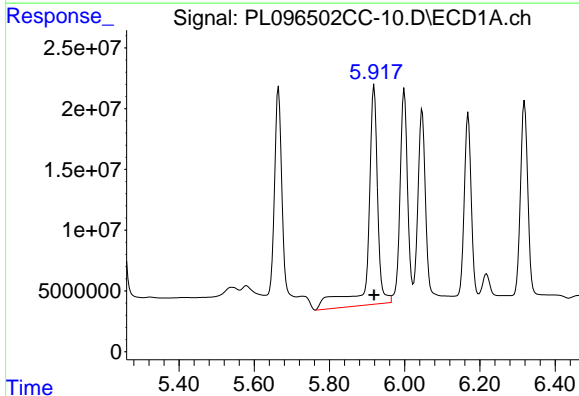
R.T.: 6.047 min
 Delta R.T.: 0.000 min
 Response: 218649560
 Conc: 54.16 ng/ml

Instrument :
 ECD_L
 ClientSampleId :



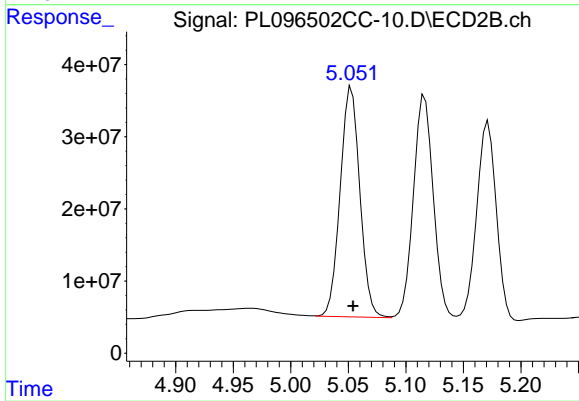
#9 Endosulfan I

R.T.: 5.172 min
 Delta R.T.: 0.000 min
 Response: 324492681
 Conc: 45.23 ng/ml



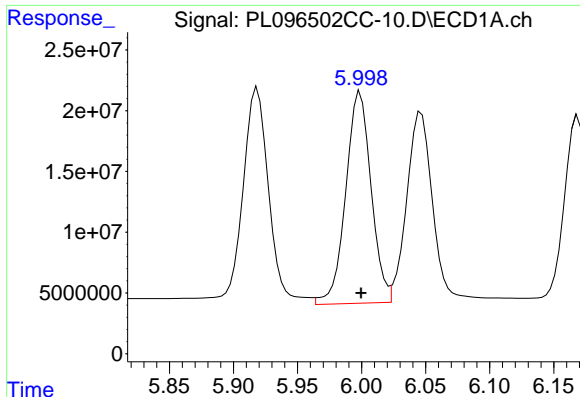
#10 gamma-Chlordane

R.T.: 5.919 min
 Delta R.T.: 0.000 min
 Response: 317948440
 Conc: 71.86 ng/ml



#10 gamma-Chlordane

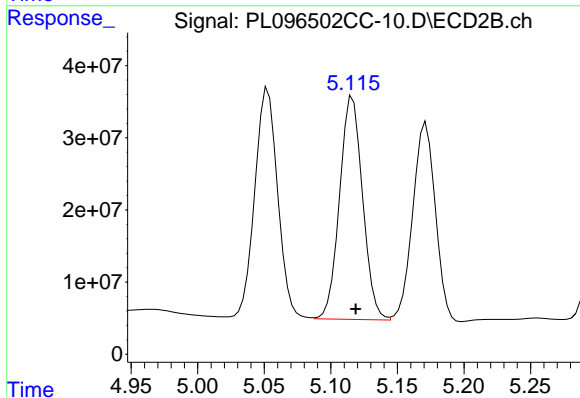
R.T.: 5.053 min
 Delta R.T.: -0.001 min
 Response: 380150709
 Conc: 54.15 ng/ml



#11 alpha-Chlordane

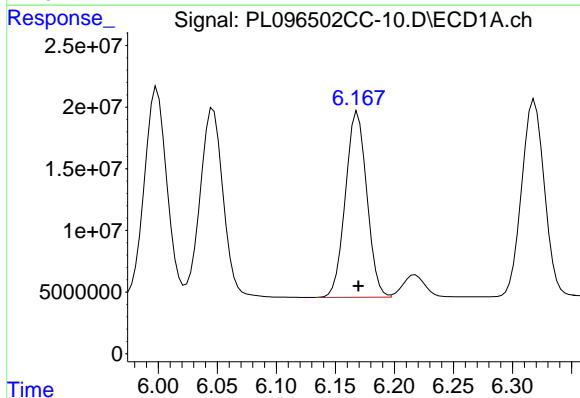
R.T.: 5.999 min
 Delta R.T.: 0.000 min
 Response: 240147875
 Conc: 54.84 ng/ml

Instrument :
 ECD_L
 ClientSampleId :



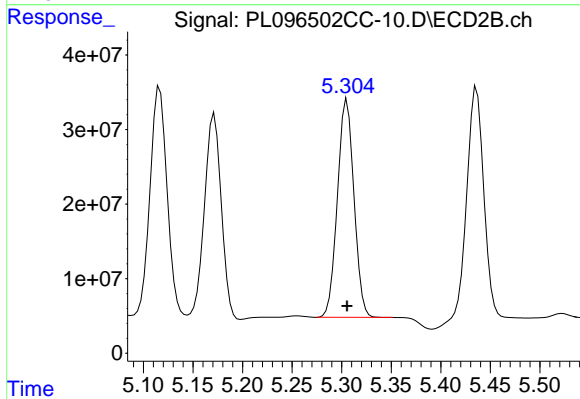
#11 alpha-Chlordane

R.T.: 5.116 min
 Delta R.T.: -0.002 min
 Response: 372321092
 Conc: 49.51 ng/ml



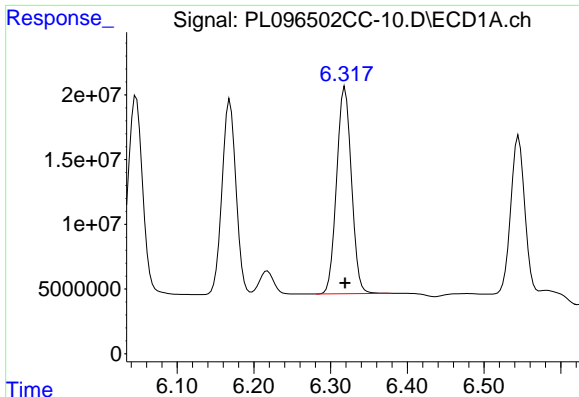
#12 4,4'-DDE

R.T.: 6.169 min
 Delta R.T.: 0.000 min
 Response: 190080473
 Conc: 51.27 ng/ml



#12 4,4'-DDE

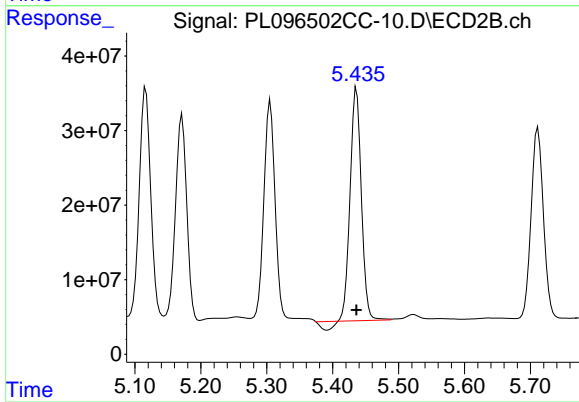
R.T.: 5.305 min
 Delta R.T.: 0.000 min
 Response: 339559534
 Conc: 52.53 ng/ml



#13 Dieldrin

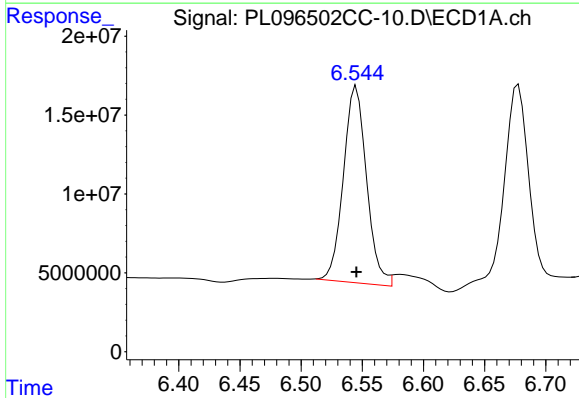
R.T.: 6.319 min
 Delta R.T.: 0.000 min
 Response: 214735022
 Conc: 50.78 ng/ml

Instrument :
 ECD_L
 ClientSampleId :



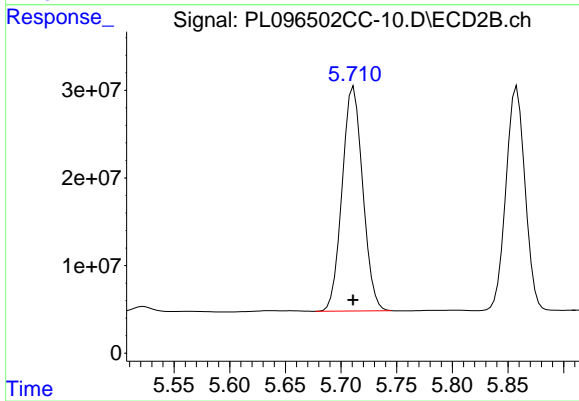
#13 Dieldrin

R.T.: 5.436 min
 Delta R.T.: 0.000 min
 Response: 361307724
 Conc: 52.98 ng/ml



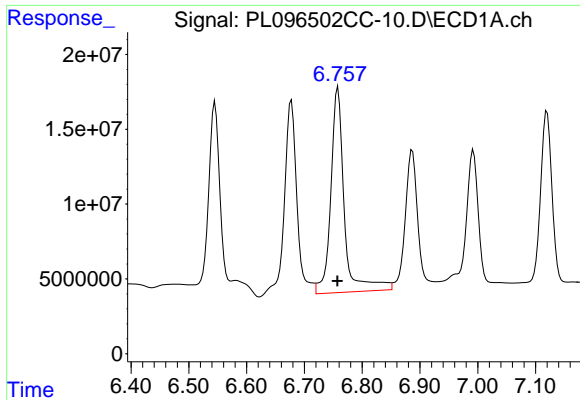
#14 Endrin

R.T.: 6.545 min
 Delta R.T.: 0.000 min
 Response: 164310299
 Conc: 52.83 ng/ml



#14 Endrin

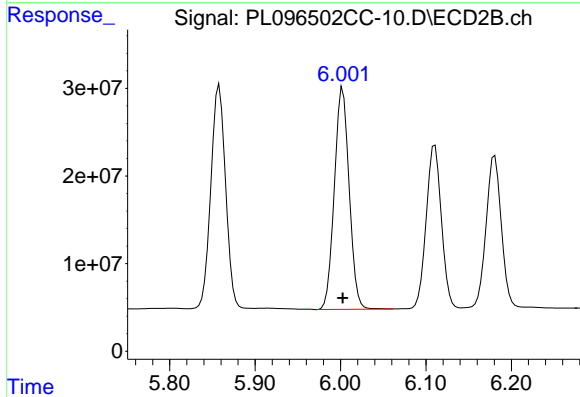
R.T.: 5.711 min
 Delta R.T.: 0.000 min
 Response: 329898938
 Conc: 54.11 ng/ml



#15 Endosulfan II

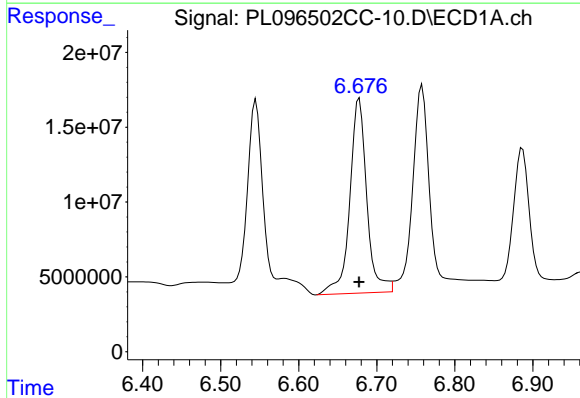
R.T.: 6.758 min
 Delta R.T.: 0.001 min
 Response: 222912295
 Conc: 64.24 ng/ml

Instrument :
 ECD_L
 ClientSampleId :



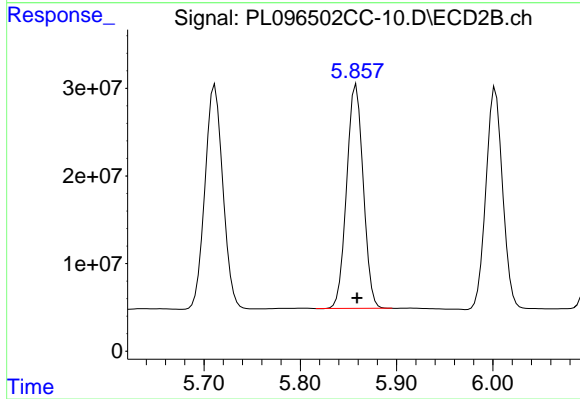
#15 Endosulfan II

R.T.: 6.003 min
 Delta R.T.: 0.000 min
 Response: 305465155
 Conc: 52.09 ng/ml



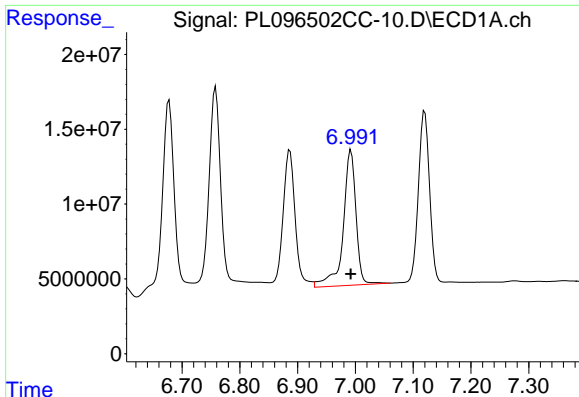
#16 4,4'-DDD

R.T.: 6.678 min
 Delta R.T.: 0.000 min
 Response: 197450194
 Conc: 67.81 ng/ml



#16 4,4'-DDD

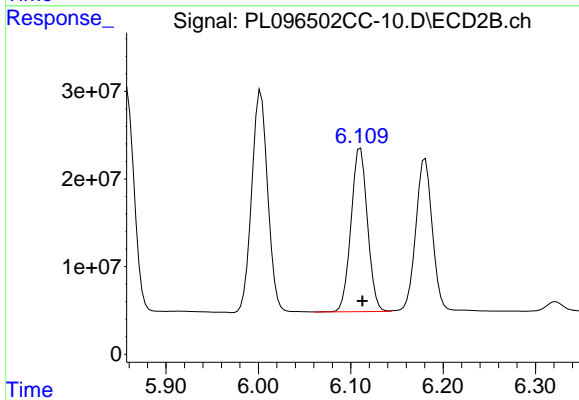
R.T.: 5.858 min
 Delta R.T.: 0.000 min
 Response: 304324117
 Conc: 59.34 ng/ml



#17 4,4'-DDT

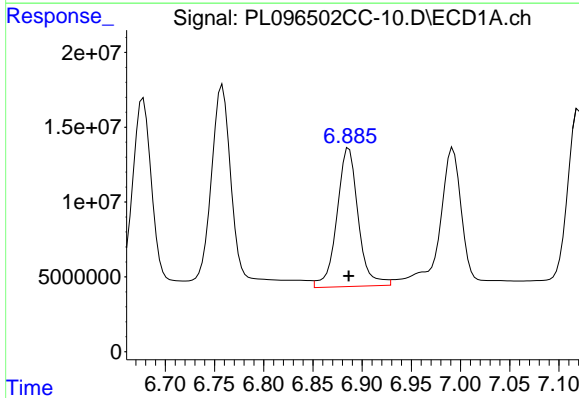
R.T.: 6.992 min
Delta R.T.: 0.000 min
Response: 137921698
Conc: 45.44 ng/ml

Instrument :
ECD_L
ClientSampleId :



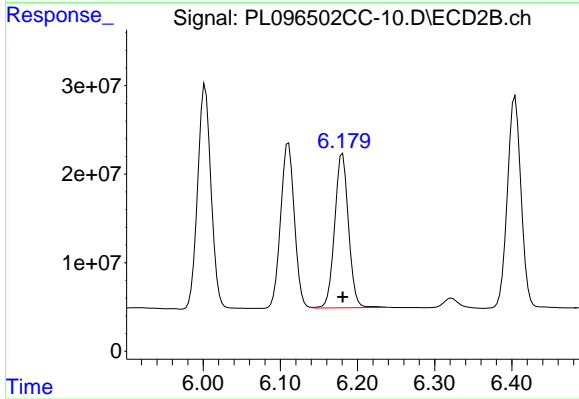
#17 4,4'-DDT

R.T.: 6.111 min
Delta R.T.: -0.002 min
Response: 230888836
Conc: 40.26 ng/ml



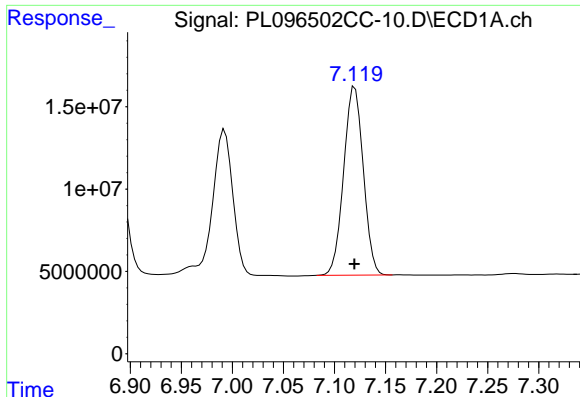
#18 Endrin aldehyde

R.T.: 6.887 min
Delta R.T.: 0.000 min
Response: 139470541
Conc: 62.39 ng/ml



#18 Endrin aldehyde

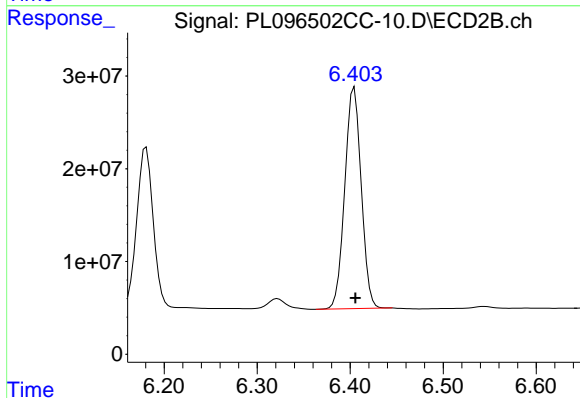
R.T.: 6.181 min
Delta R.T.: 0.000 min
Response: 217366598
Conc: 48.80 ng/ml



#19 Endosulfan Sulfate

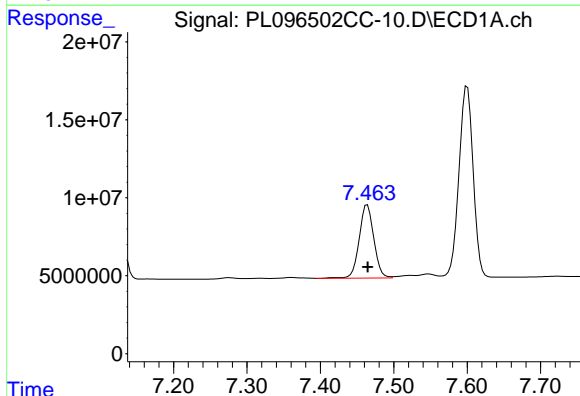
R.T.: 7.120 min
 Delta R.T.: 0.000 min
 Response: 153119339
 Conc: 50.06 ng/ml

Instrument :
 ECD_L
 ClientSampleId :



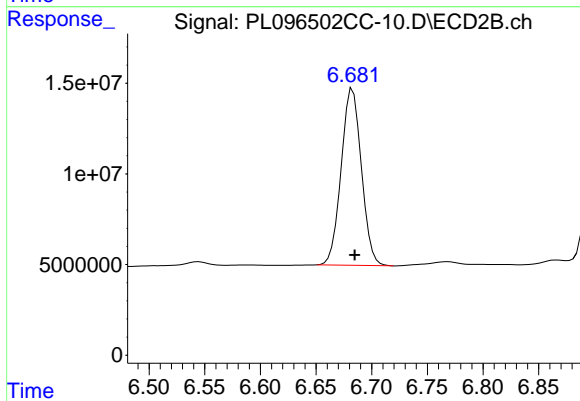
#19 Endosulfan Sulfate

R.T.: 6.404 min
 Delta R.T.: -0.001 min
 Response: 292942139
 Conc: 52.08 ng/ml



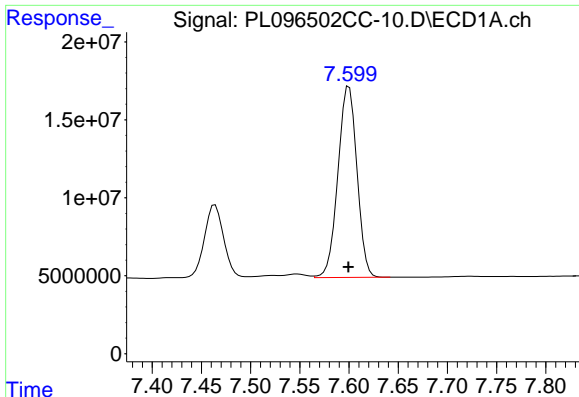
#20 Methoxychlor

R.T.: 7.464 min
 Delta R.T.: 0.000 min
 Response: 64782686
 Conc: 41.12 ng/ml



#20 Methoxychlor

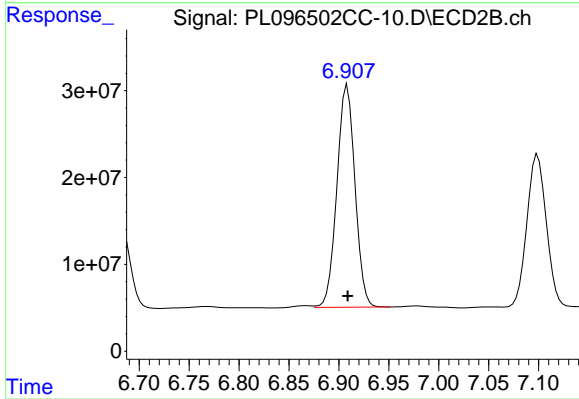
R.T.: 6.683 min
 Delta R.T.: -0.002 min
 Response: 123265008
 Conc: 40.58 ng/ml



#21 Endrin ketone

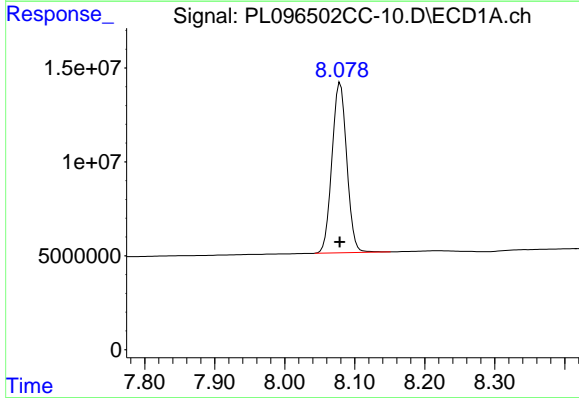
R.T.: 7.600 min
 Delta R.T.: 0.000 min
 Response: 165059591
 Conc: 49.99 ng/ml

Instrument :
 ECD_L
 ClientSampleId :



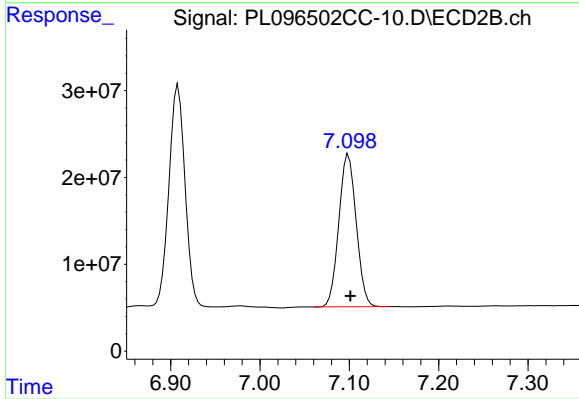
#21 Endrin ketone

R.T.: 6.908 min
 Delta R.T.: 0.000 min
 Response: 322358804
 Conc: 51.56 ng/ml



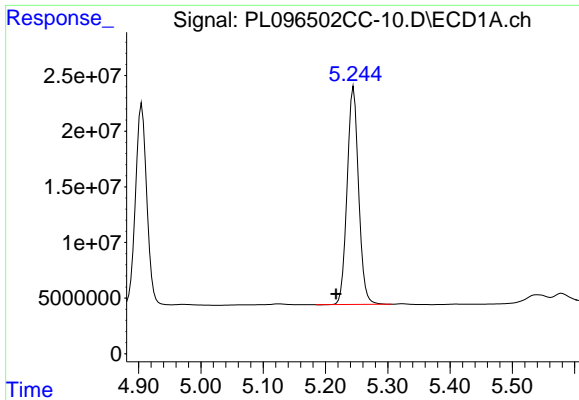
#22 Mirex

R.T.: 8.079 min
 Delta R.T.: 0.000 min
 Response: 133168117
 Conc: 47.86 ng/ml



#22 Mirex

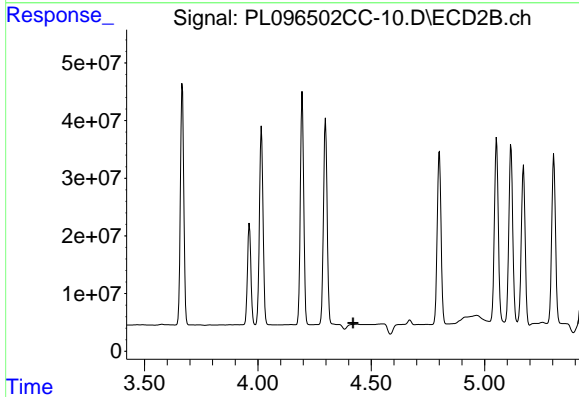
R.T.: 7.099 min
 Delta R.T.: -0.002 min
 Response: 237109539
 Conc: 47.73 ng/ml



#24 Chlordane-2

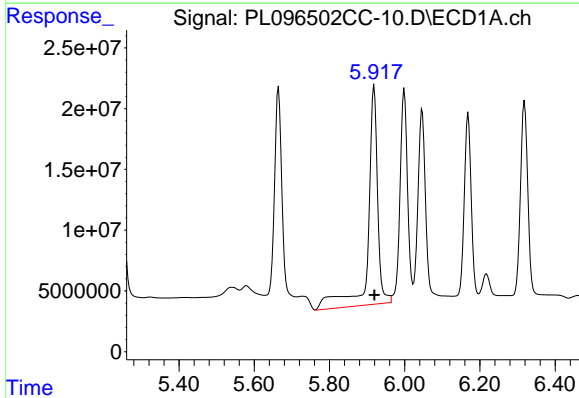
R.T.: 5.245 min
 Delta R.T.: 0.028 min
 Response: 252945058
 Conc: 1291.99 ng/m

Instrument :
 ECD_L
 ClientSampleId :



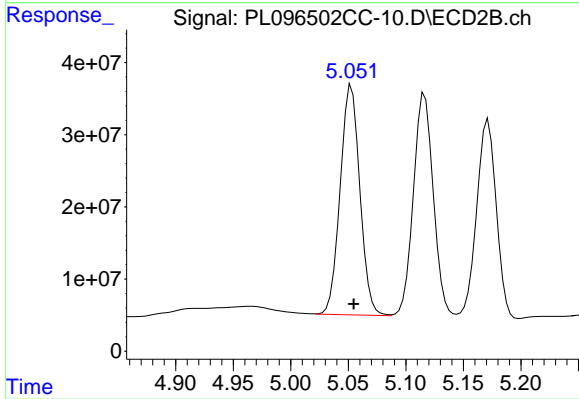
#24 Chlordane-2

R.T.: 4.438 min
 Delta R.T.: 0.017 min
 Response: -5908337
 Conc: N.D.



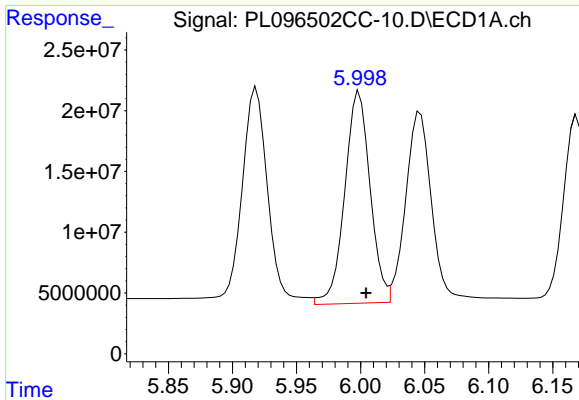
#25 Chlordane-3

R.T.: 5.919 min
 Delta R.T.: -0.001 min
 Response: 317948440
 Conc: 431.55 ng/ml



#25 Chlordane-3

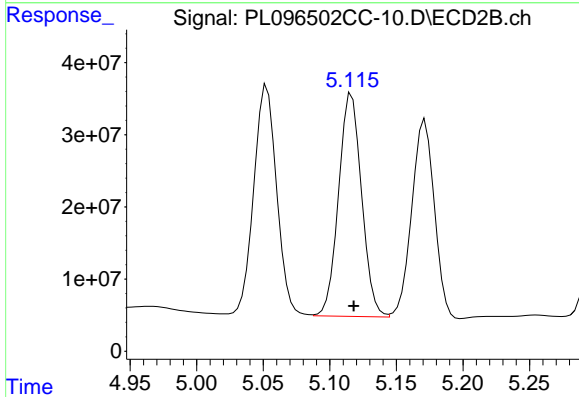
R.T.: 5.053 min
 Delta R.T.: -0.002 min
 Response: 380150709
 Conc: 472.51 ng/ml



#26 Chlordane-4

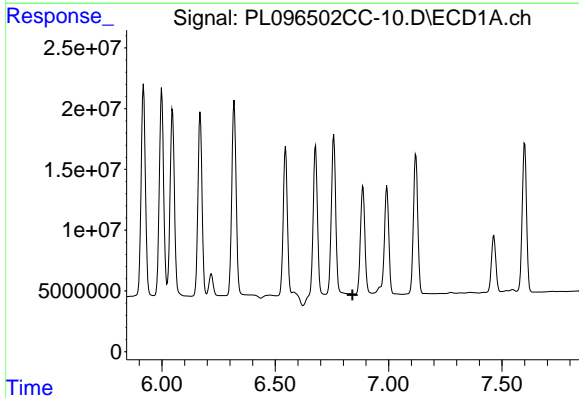
R.T.: 5.999 min
 Delta R.T.: -0.005 min
 Response: 240147875
 Conc: 267.66 ng/ml

Instrument :
 ECD_L
 ClientSampleId :



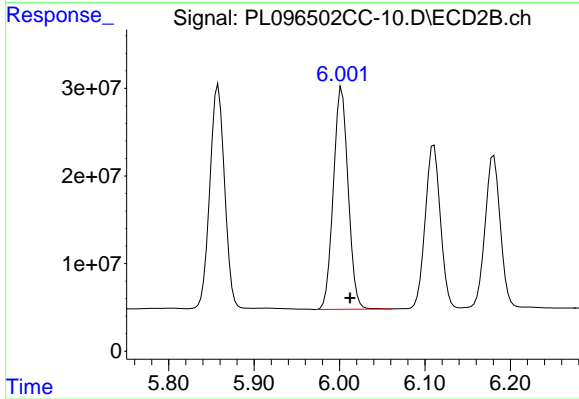
#26 Chlordane-4

R.T.: 5.116 min
 Delta R.T.: -0.002 min
 Response: 372321092
 Conc: 495.49 ng/ml



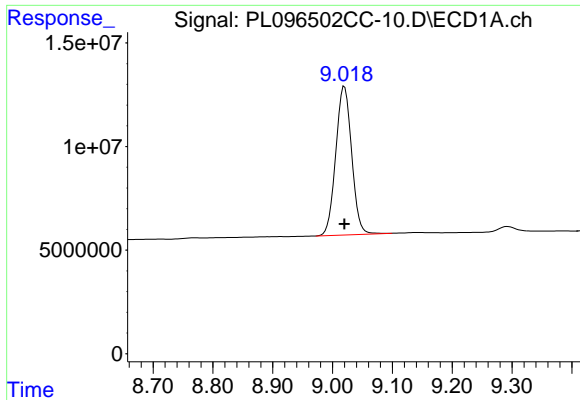
#27 Chlordane-5

R.T.: 0.000 min
 Exp R.T. : 6.841 min
 Response: 0
 Conc: N.D.



#27 Chlordane-5

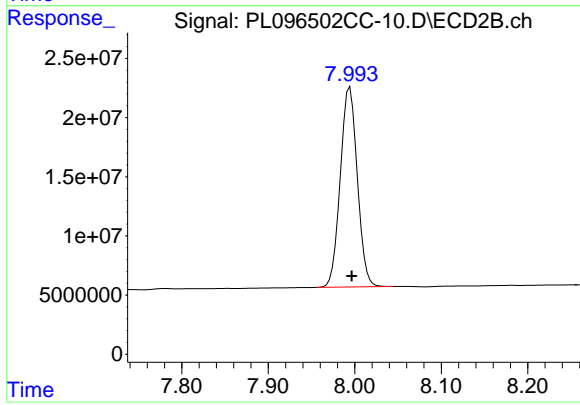
R.T.: 6.003 min
 Delta R.T.: -0.010 min
 Response: 305465155
 Conc: 1077.67 ng/ml



#28 Decachlorobiphenyl

R.T.: 9.020 min
Delta R.T.: 0.000 min
Response: 132746650
Conc: 47.19 ng/ml

Instrument :
ECD_L
ClientSampleId :



#28 Decachlorobiphenyl

R.T.: 7.994 min
Delta R.T.: -0.002 min
Response: 229720100
Conc: 46.07 ng/ml