

Data Path : Z:\pestpcbsrv\HPCHEM1\ECD\_L\Data\PL072220\  
 Data File : PL060080.D  
 Signal(s) : Signal #1: ECD1A.ch Signal #2: ECD2B.ch  
 Acq On : 22 Jul 2020 12:59  
 Operator : DD\AJ  
 Sample : L3189-01  
 Misc :  
 ALS Vial : 9 Sample Multiplier: 1

Instrument :  
 ECD\_L  
 ClientSampleId :  
 BU-02-072120

Integration File signal 1: autoint1.e  
 Integration File signal 2: autoint2.e  
 Quant Time: Jul 23 02:48:14 2020  
 Quant Method : Z:\pestpcbsrv\HPCHEM1\ECD\_L\methods\PL071020.M  
 Quant Title : GC Extractables  
 QLast Update : Fri Jul 10 18:52:06 2020  
 Response via : Initial Calibration  
 Integrator: ChemStation

Volume Inj. : 1 µl  
 Signal #1 Phase : ZB-MR2 Signal #2 Phase: ZB-MR1  
 Signal #1 Info : 30M x 0.32mm x0.2 Signal #2 Info : 30M x 0.32mm x0.5µm

Compound	RT#1	RT#2	Resp#1	Resp#2	ng/ml	ng/ml
-----						
System Monitoring Compounds						
1) SA Tetrachlo...	3.465	4.012	29221798	40136450	15.108	15.145
28) SA Decachlor...	8.224	9.101	22182871	28663293	13.484	13.705
Target Compounds						
4) MA Heptachlor	0.000	5.197	0	1898925	N.D.	0.564 #
12) B 4,4'-DDE	5.630	6.355	71848551	105.1E6	43.143	39.268
14) MA Endrin	6.021	6.751f	3230487	4714901	2.219	2.216
16) A 4,4'-DDD	6.145	6.846	1393681	2783434	0.913	1.213 #
17) MA 4,4'-DDT	6.386	7.146	25535660	38767814	19.640	19.689
-----						

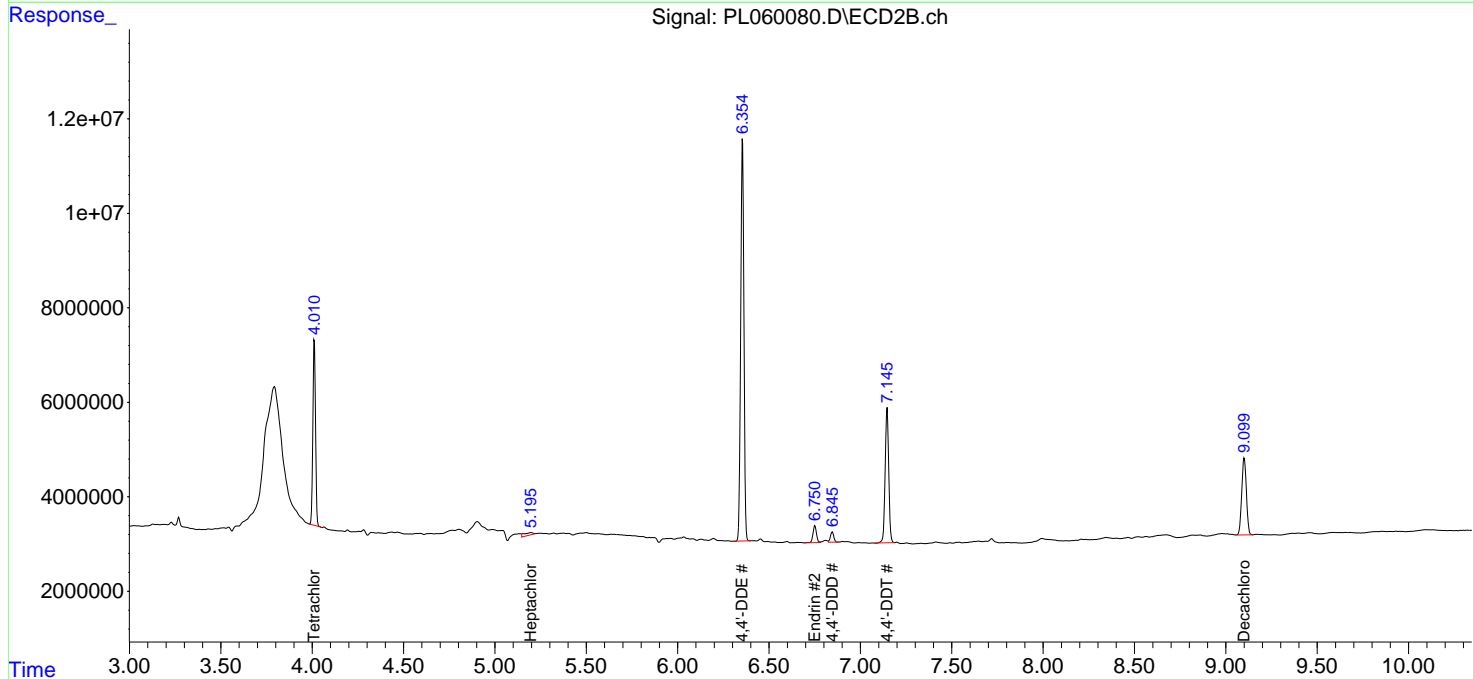
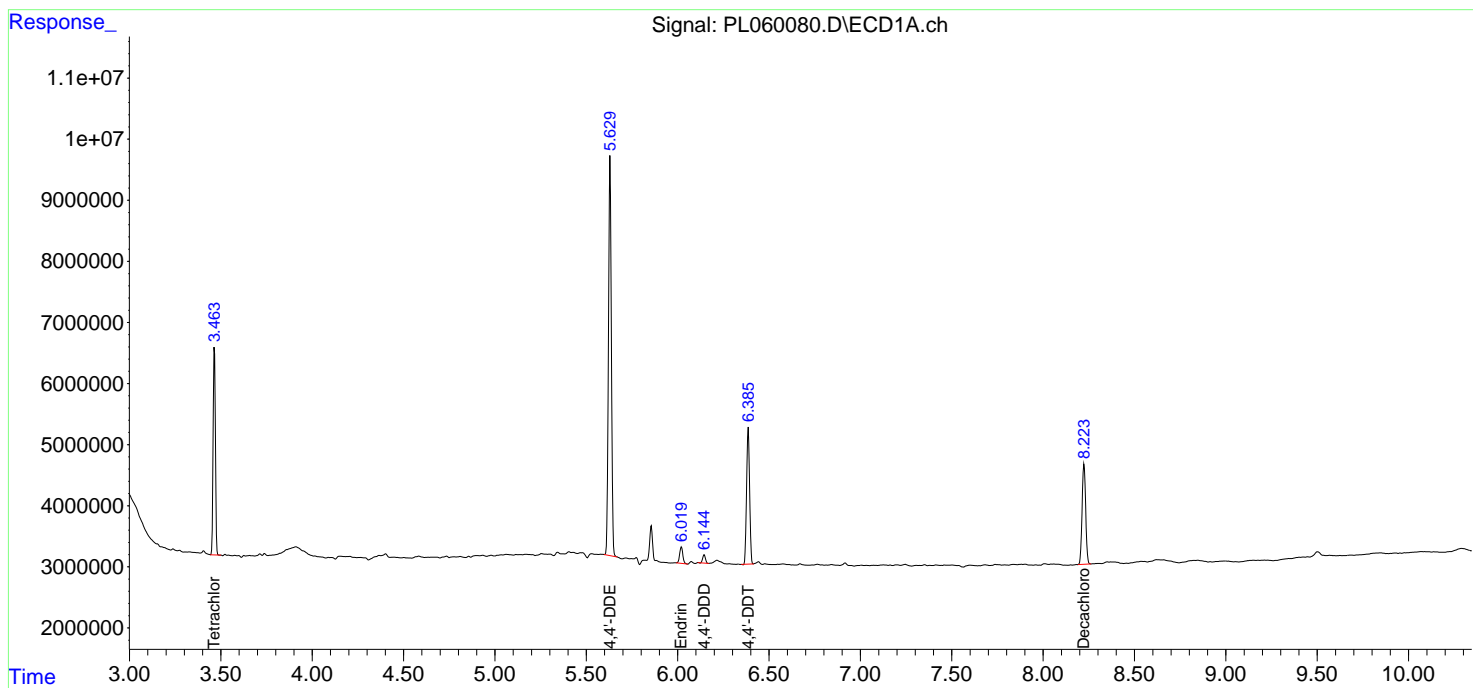
(f)=RT Delta > 1/2 Window (#)=Amounts differ by > 25% (m)=manual int.

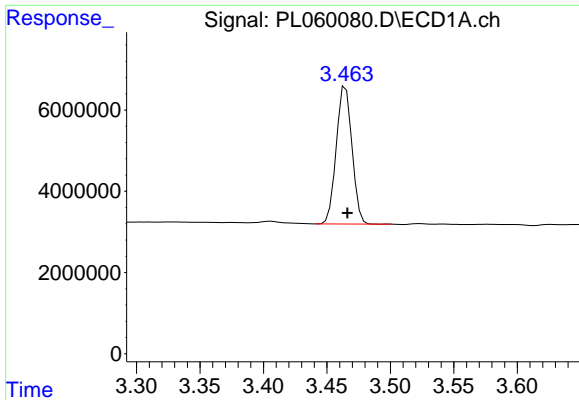
Data Path : Z:\pestpcbsrv\HPCHEM1\ECD\_L\Data\PL072220\  
 Data File : PL060080.D  
 Signal(s) : Signal #1: ECD1A.ch Signal #2: ECD2B.ch  
 Acq On : 22 Jul 2020 12:59  
 Operator : DD\AJ  
 Sample : L3189-01  
 Misc :  
 ALS Vial : 9 Sample Multiplier: 1

Instrument :  
 ECD\_L  
 ClientSampleId :  
 BU-02-072120

Integration File signal 1: autoint1.e  
 Integration File signal 2: autoint2.e  
 Quant Time: Jul 23 02:48:14 2020  
 Quant Method : Z:\pestpcbsrv\HPCHEM1\ECD\_L\methods\PL071020.M  
 Quant Title : GC Extractables  
 QLast Update : Fri Jul 10 18:52:06 2020  
 Response via : Initial Calibration  
 Integrator: ChemStation

Volume Inj. : 1 µl  
 Signal #1 Phase : ZB-MR2 Signal #2 Phase: ZB-MR1  
 Signal #1 Info : 30M x 0.32mm x0.2 Signal #2 Info : 30M x 0.32mm x0.5µm

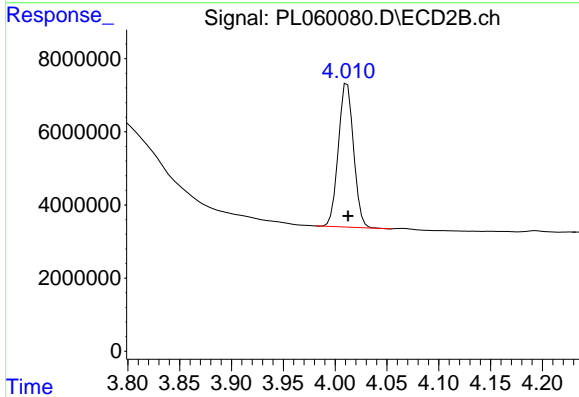




#1 Tetrachloro-m-xylene

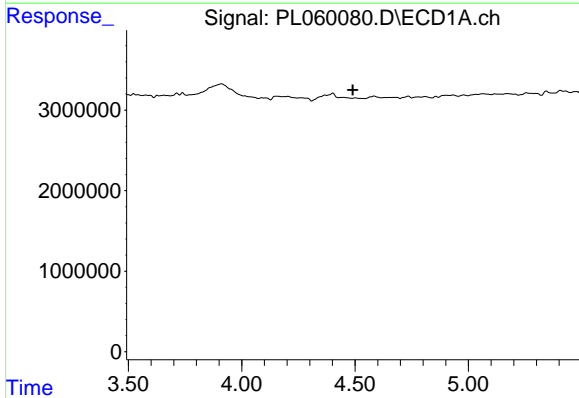
R.T.: 3.465 min  
 Delta R.T.: -0.001 min  
 Response: 29221798  
 Conc: 15.11 ng/ml

Instrument :  
 ECD\_L  
 ClientSampleId :  
 BU-02-072120



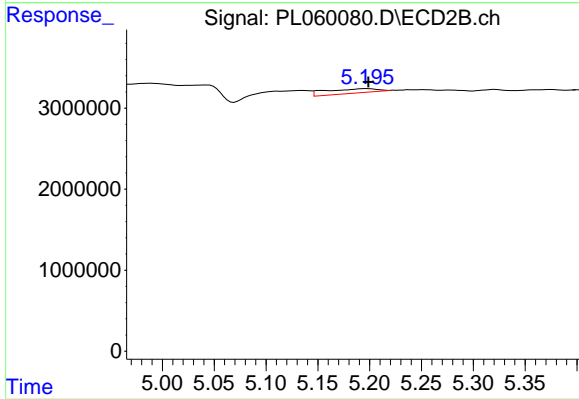
#1 Tetrachloro-m-xylene

R.T.: 4.012 min  
 Delta R.T.: 0.000 min  
 Response: 40136450  
 Conc: 15.14 ng/ml



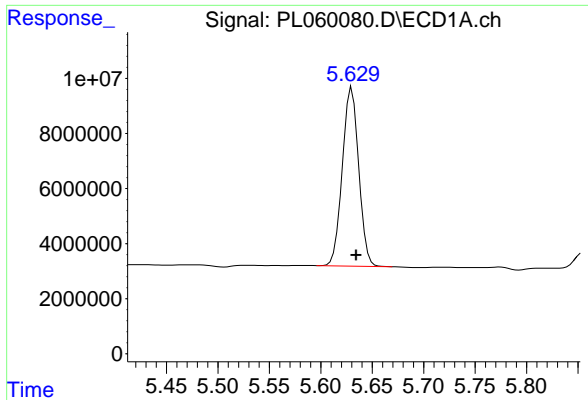
#4 Heptachlor

R.T.: 0.000 min  
 Exp R.T. : 4.490 min  
 Response: 0  
 Conc: N.D.



#4 Heptachlor

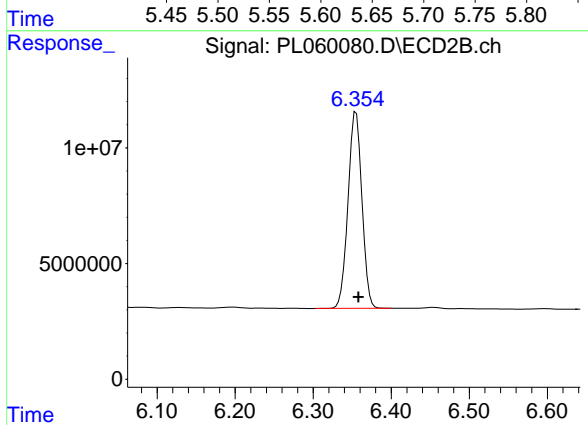
R.T.: 5.197 min  
 Delta R.T.: -0.002 min  
 Response: 1898925  
 Conc: 0.56 ng/ml



#12 4,4'-DDE

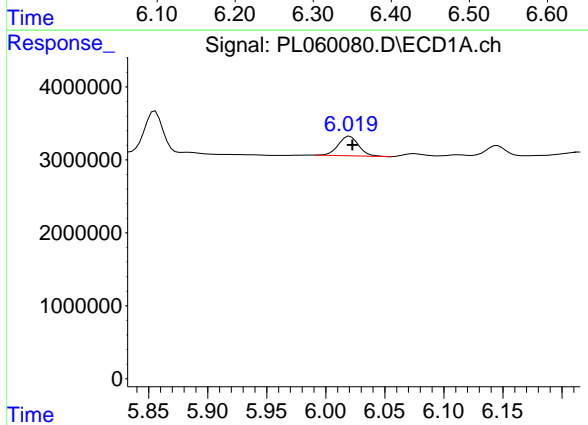
R.T.: 5.630 min  
 Delta R.T.: -0.004 min  
 Response: 71848551  
 Conc: 43.14 ng/ml

Instrument :  
 ECD\_L  
 ClientSampled :  
 BU-02-072120



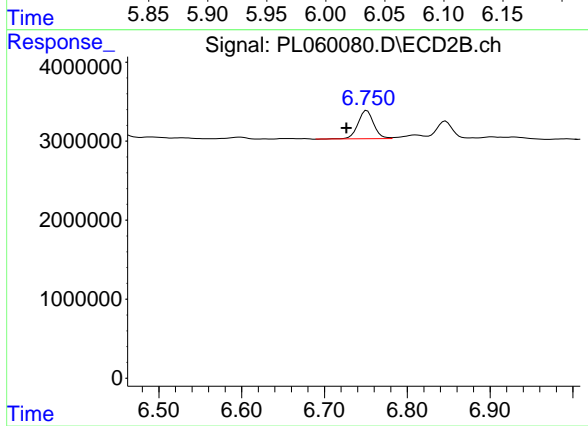
#12 4,4'-DDE

R.T.: 6.355 min  
 Delta R.T.: -0.003 min  
 Response: 105106585  
 Conc: 39.27 ng/ml



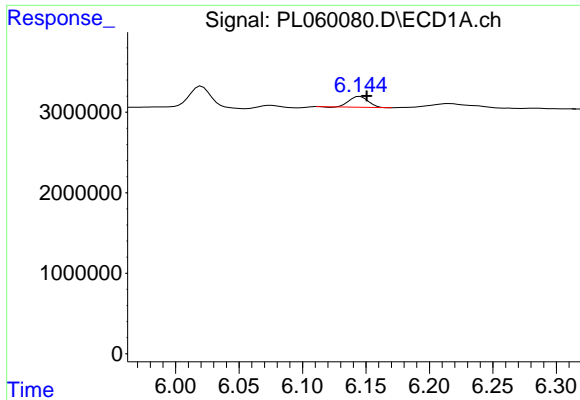
#14 Endrin

R.T.: 6.021 min  
 Delta R.T.: -0.002 min  
 Response: 3230487  
 Conc: 2.22 ng/ml



#14 Endrin

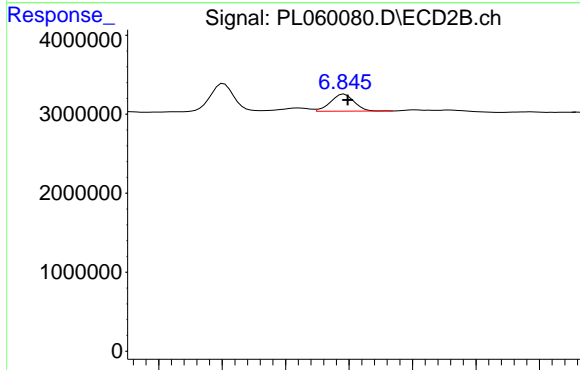
R.T.: 6.751 min  
 Delta R.T.: 0.025 min  
 Response: 4714901  
 Conc: 2.22 ng/ml



#16 4,4'-DDD

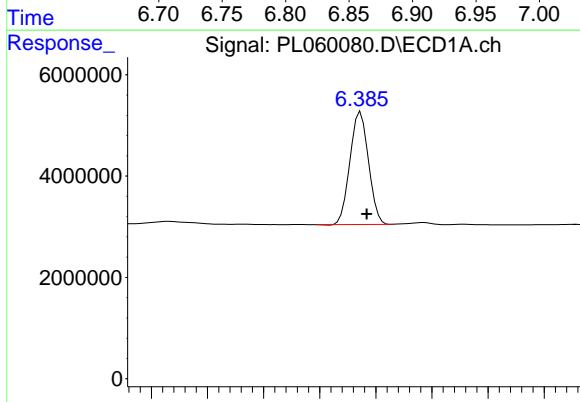
R.T.: 6.145 min  
Delta R.T.: -0.005 min  
Response: 1393681  
Conc: 0.91 ng/ml

Instrument :  
ECD\_L  
ClientSampleId :  
BU-02-072120



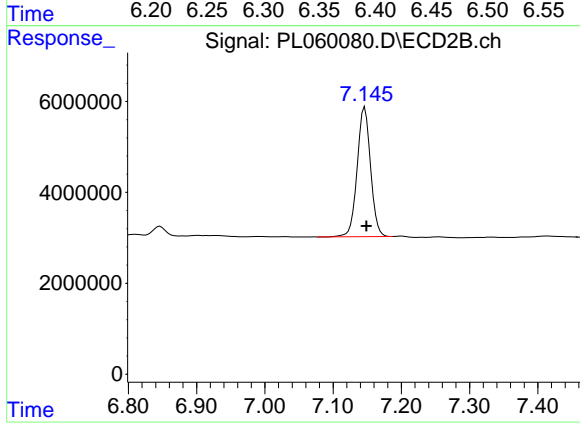
#16 4,4'-DDD

R.T.: 6.846 min  
Delta R.T.: -0.003 min  
Response: 2783434  
Conc: 1.21 ng/ml



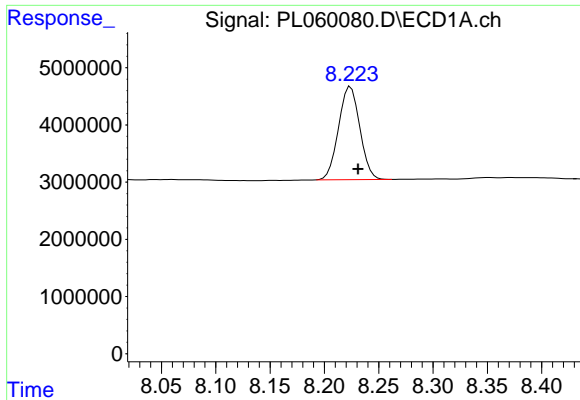
#17 4,4'-DDT

R.T.: 6.386 min  
Delta R.T.: -0.006 min  
Response: 25535660  
Conc: 19.64 ng/ml



#17 4,4'-DDT

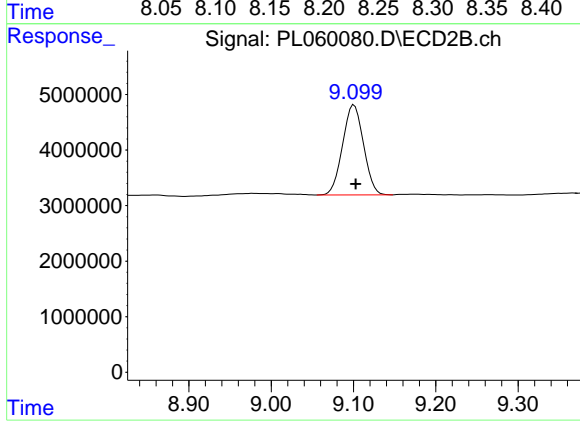
R.T.: 7.146 min  
Delta R.T.: -0.003 min  
Response: 38767814  
Conc: 19.69 ng/ml



#28 Decachlorobiphenyl

R.T.: 8.224 min  
Delta R.T.: -0.007 min  
Response: 22182871  
Conc: 13.48 ng/ml

Instrument :  
ECD\_L  
ClientSampleId :  
BU-02-072120



#28 Decachlorobiphenyl

R.T.: 9.101 min  
Delta R.T.: -0.002 min  
Response: 28663293  
Conc: 13.71 ng/ml