

Data Path : Z:\pestpcbsrv\HPCHEM1\ECD\_L\Data\PL072220\  
 Data File : PL060091.D  
 Signal(s) : Signal #1: ECD1A.ch Signal #2: ECD2B.ch  
 Acq On : 22 Jul 2020 15:41  
 Operator : DD\AJ  
 Sample : L3370-07  
 Misc :  
 ALS Vial : 18 Sample Multiplier: 1

Instrument :  
 ECD\_L  
 ClientSampleId :  
 TP-3-D

Integration File signal 1: autoint1.e  
 Integration File signal 2: autoint2.e  
 Quant Time: Jul 23 02:50:29 2020  
 Quant Method : Z:\pestpcbsrv\HPCHEM1\ECD\_L\methods\PL071020.M  
 Quant Title : GC Extractables  
 QLast Update : Fri Jul 10 18:52:06 2020  
 Response via : Initial Calibration  
 Integrator: ChemStation

Volume Inj. : 1 µl  
 Signal #1 Phase : ZB-MR2 Signal #2 Phase: ZB-MR1  
 Signal #1 Info : 30M x 0.32mm x0.2 Signal #2 Info : 30M x 0.32mm x0.5µm

Compound	RT#1	RT#2	Resp#1	Resp#2	ng/ml	ng/ml
-----						
System Monitoring Compounds						
1) SA Tetrachlo...	3.472	4.031f	37596341	50343697	19.437	18.996
28) SA Decachlor...	8.233	9.125f	19541423	20606405	11.879	9.853
Target Compounds						
4) MA Heptachlor	0.000	5.223f	0	34845292	N.D.	10.358 #
6) B beta-BHC	4.421f	0.000	2052090	0	2.009	N.D. #
7) B delta-BHC	0.000	5.068	0	4479443	N.D.	1.438 #
21) B Endrin ke...	0.000	7.775f	0	2602457	N.D.	1.008 #
-----						

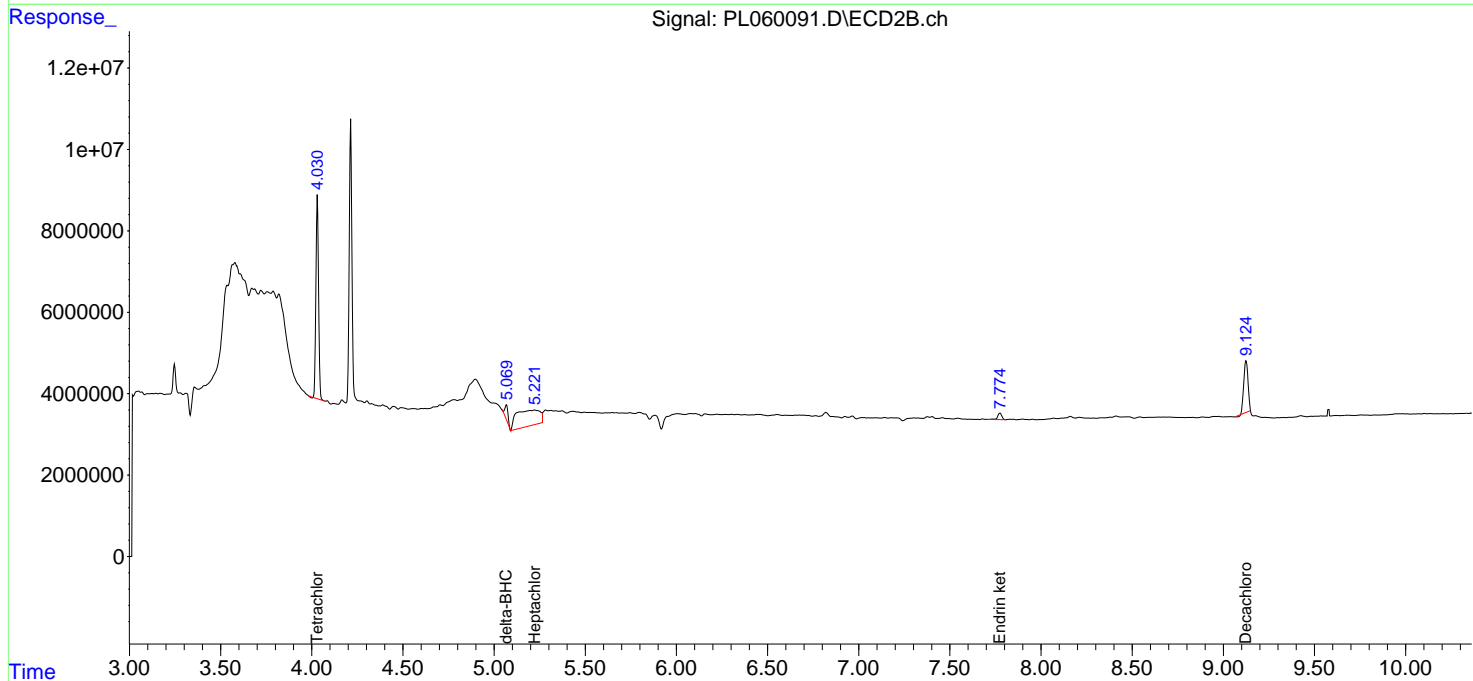
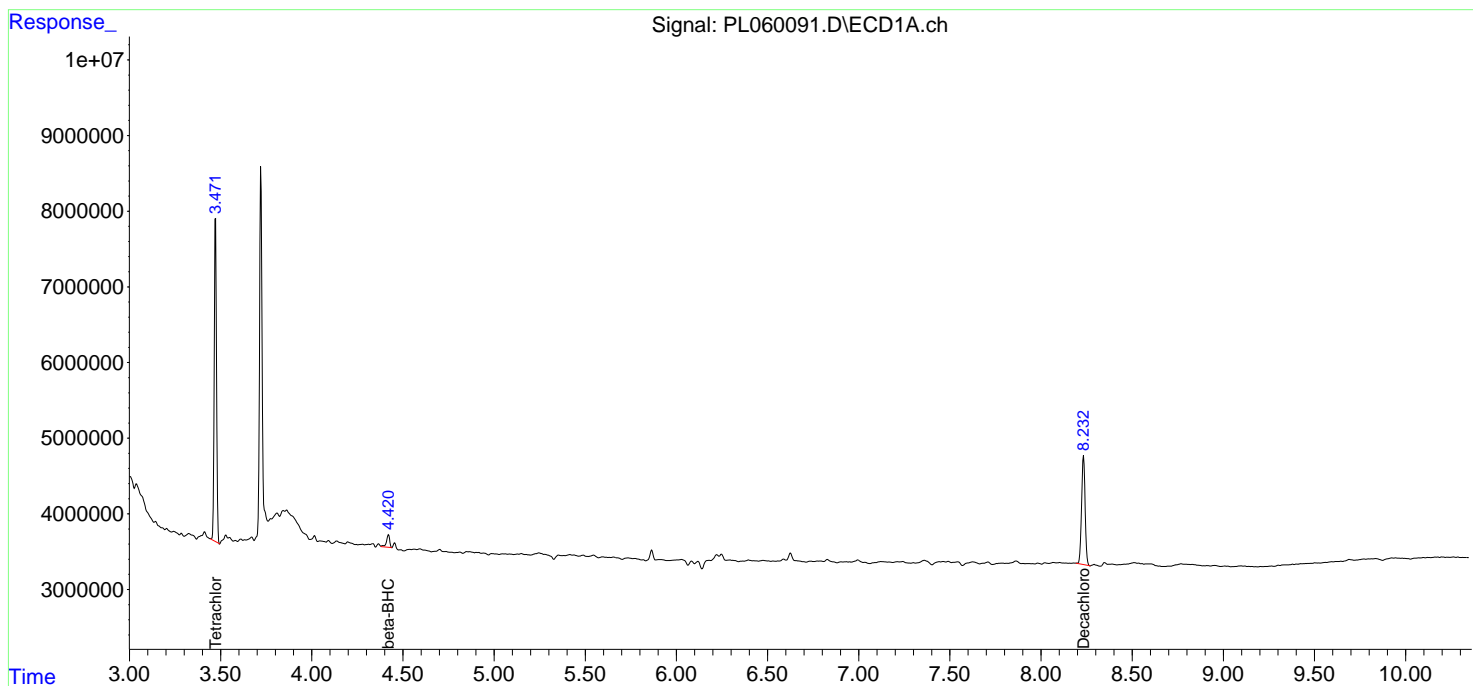
(f)=RT Delta > 1/2 Window (#)=Amounts differ by > 25% (m)=manual int.

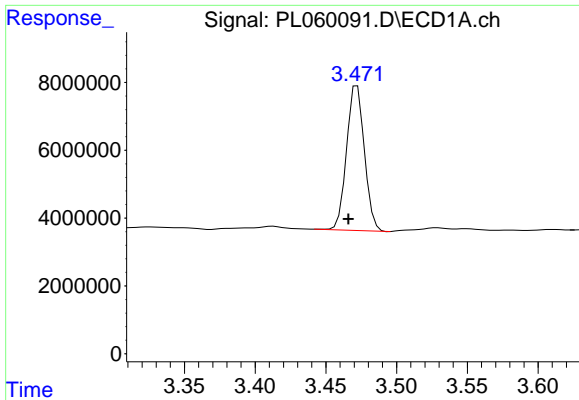
Data Path : Z:\pestpcbsrv\HPCHEM1\ECD\_L\Data\PL072220\  
 Data File : PL060091.D  
 Signal(s) : Signal #1: ECD1A.ch Signal #2: ECD2B.ch  
 Acq On : 22 Jul 2020 15:41  
 Operator : DD\AJ  
 Sample : L3370-07  
 Misc :  
 ALS Vial : 18 Sample Multiplier: 1

Instrument :  
 ECD\_L  
 ClientSampled :  
 TP-3-D

Integration File signal 1: autoint1.e  
 Integration File signal 2: autoint2.e  
 Quant Time: Jul 23 02:50:29 2020  
 Quant Method : Z:\pestpcbsrv\HPCHEM1\ECD\_L\methods\PL071020.M  
 Quant Title : GC Extractables  
 QLast Update : Fri Jul 10 18:52:06 2020  
 Response via : Initial Calibration  
 Integrator: ChemStation

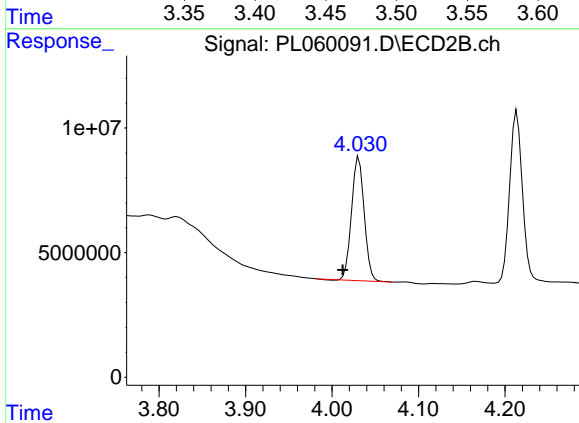
Volume Inj. : 1 µl  
 Signal #1 Phase : ZB-MR2 Signal #2 Phase: ZB-MR1  
 Signal #1 Info : 30M x 0.32mm x0.2 Signal #2 Info : 30M x 0.32mm x0.5µm



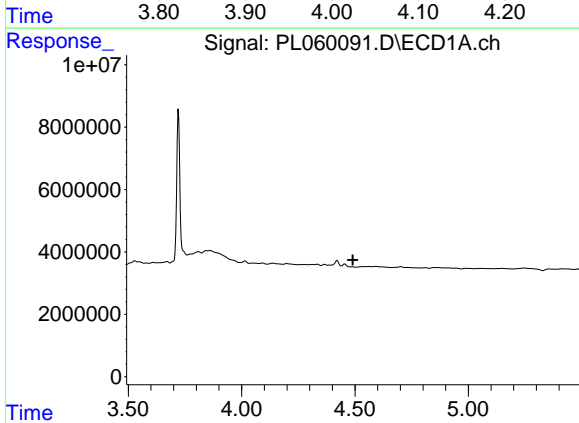


#1 Tetrachloro-m-xylene  
 R.T.: 3.472 min  
 Delta R.T.: 0.006 min  
 Response: 37596341  
 Conc: 19.44 ng/ml

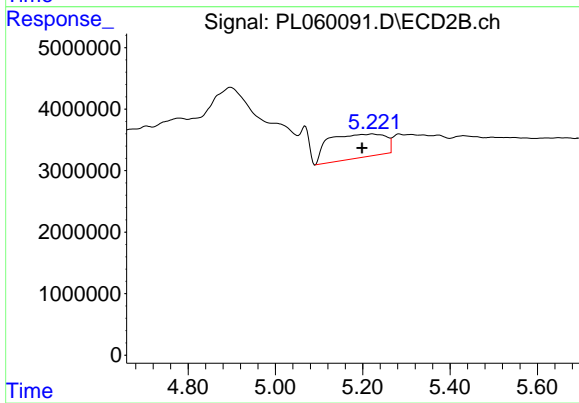
Instrument :  
 ECD\_L  
 ClientSampled :  
 TP-3-D



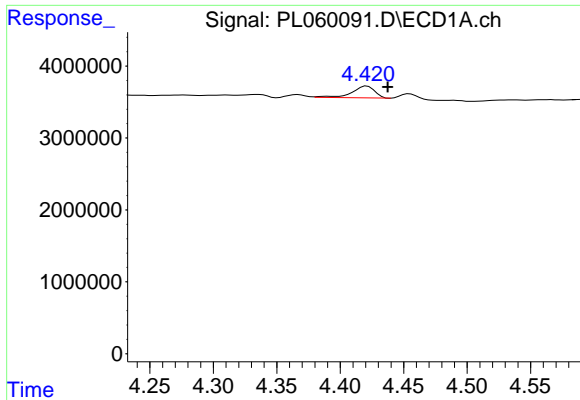
#1 Tetrachloro-m-xylene  
 R.T.: 4.031 min  
 Delta R.T.: 0.019 min  
 Response: 50343697  
 Conc: 19.00 ng/ml



#4 Heptachlor  
 R.T.: 0.000 min  
 Exp R.T. : 4.490 min  
 Response: 0  
 Conc: N.D.

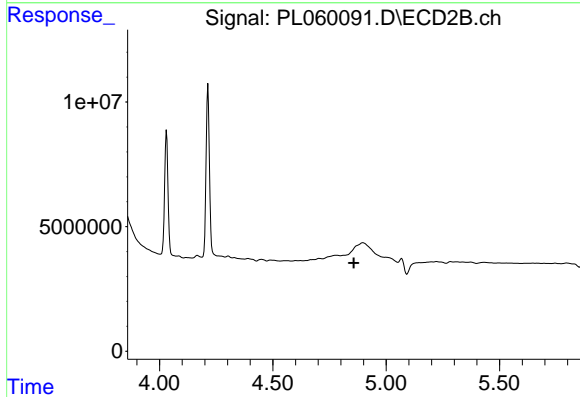


#4 Heptachlor  
 R.T.: 5.223 min  
 Delta R.T.: 0.024 min  
 Response: 34845292  
 Conc: 10.36 ng/ml

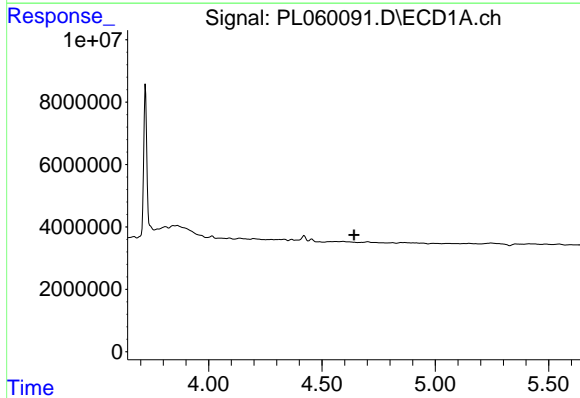


#6 beta-BHC  
 R.T.: 4.421 min  
 Delta R.T.: -0.016 min  
 Response: 2052090  
 Conc: 2.01 ng/ml

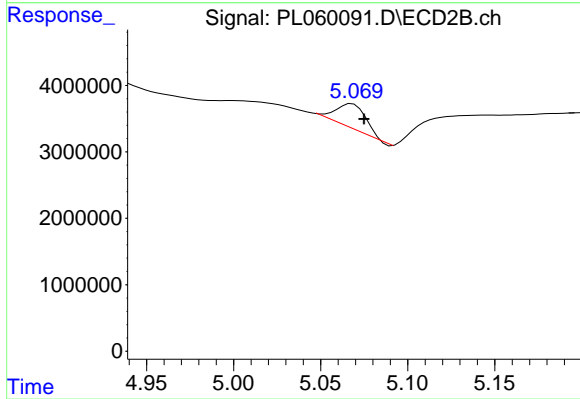
Instrument :  
 ECD\_L  
 ClientSampled :  
 TP-3-D



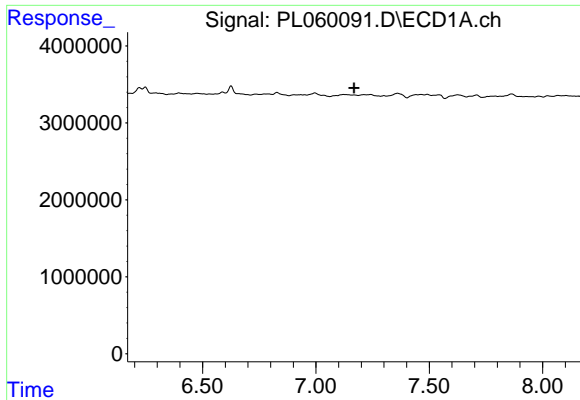
#6 beta-BHC  
 R.T.: 0.000 min  
 Exp R.T. : 4.857 min  
 Response: 0  
 Conc: N.D.



#7 delta-BHC  
 R.T.: 0.000 min  
 Exp R.T. : 4.642 min  
 Response: 0  
 Conc: N.D.

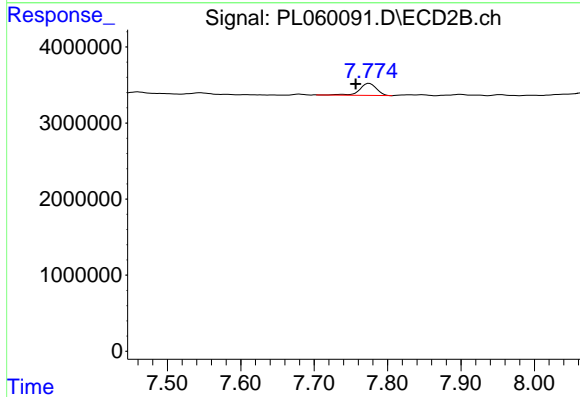


#7 delta-BHC  
 R.T.: 5.068 min  
 Delta R.T.: -0.007 min  
 Response: 4479443  
 Conc: 1.44 ng/ml

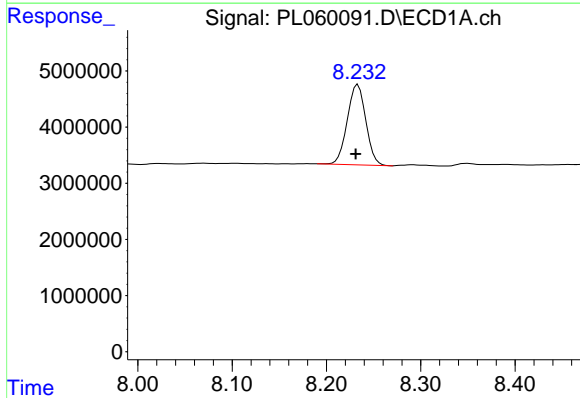


#21 Endrin ketone  
 R.T.: 0.000 min  
 Exp R.T.: 7.168 min  
 Response: 0  
 Conc: N.D.

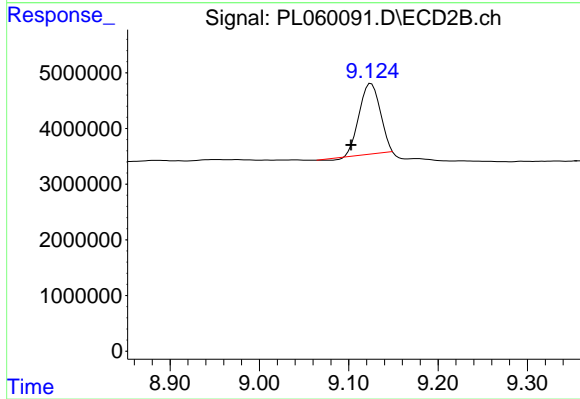
Instrument :  
 ECD\_L  
 ClientSampled :  
 TP-3-D



#21 Endrin ketone  
 R.T.: 7.775 min  
 Delta R.T.: 0.019 min  
 Response: 2602457  
 Conc: 1.01 ng/ml



#28 Decachlorobiphenyl  
 R.T.: 8.233 min  
 Delta R.T.: 0.002 min  
 Response: 19541423  
 Conc: 11.88 ng/ml



#28 Decachlorobiphenyl  
 R.T.: 9.125 min  
 Delta R.T.: 0.022 min  
 Response: 20606405  
 Conc: 9.85 ng/ml