

Data Path : Z:\pestpcbsrv\HPCHEM1\ECD_L\Data\PL072222\
 Data File : PL076560.D
 Signal(s) : Signal #1: ECD1A.ch Signal #2: ECD2B.ch
 Acq On : 22 Jul 2022 02:13
 Operator : AR\AJ
 Sample : N3670-02
 Misc : PEST MDL 1 PPB
 ALS Vial : 30 Sample Multiplier: 1

Instrument :
 ECD_L
ClientSampleId :
 MDL-WATER-QT2-2022-04

Manual Integrations
APPROVED

Reviewed By :Abdul Mirza 07/25/2022
 Supervised By :Ankita Jodhani 07/25/2022

Integration File signal 1: autoint1.e
 Integration File signal 2: autoint2.e
 Quant Time: Jul 25 09:05:01 2022
 Quant Method : Z:\pestpcbsrv\HPCHEM1\ECD_L\methods\PL072122CLP.M
 Quant Title : GC Extractables
 QLast Update : Mon Jul 25 05:54:24 2022
 Response via : Initial Calibration
 Integrator: ChemStation

Volume Inj. : 1 µl
 Signal #1 Phase : ZB-MR2 Signal #2 Phase: ZB-MR1
 Signal #1 Info : 30M x 0.32mm x0.2 Signal #2 Info : 30M x 0.32mm x 0.50µm

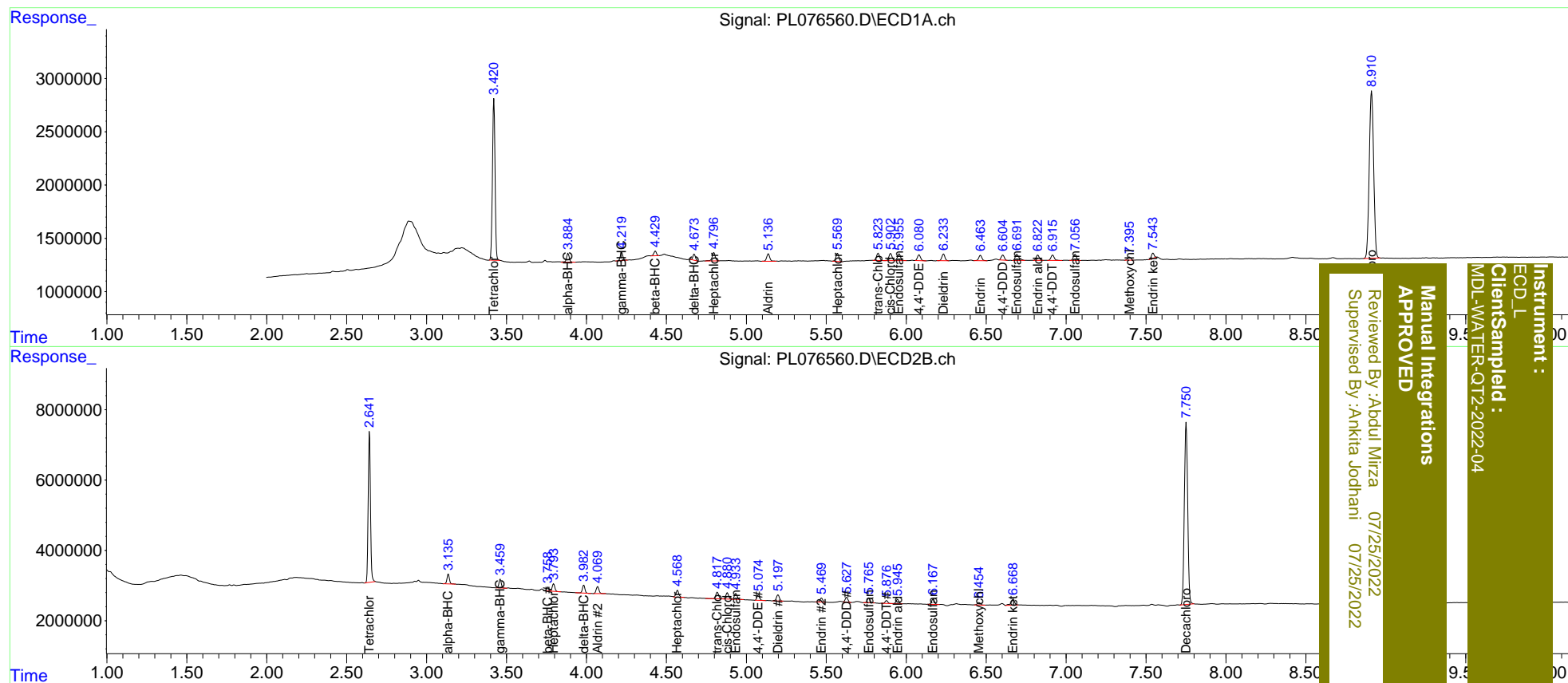
Compound	RT#1	RT#2	Resp#1	Resp#2	ng/ml	ng/ml
System Monitoring Compounds						
1) SA Tetrachlo...	3.421	2.643	16831624	42654016	18.575	18.192
27) SA Decachlor...	8.911	7.751	30098533	74262315	38.438	36.982
Target Compounds						
2) A alpha-BHC	3.885	3.136	1017639	2903496	0.829	0.869
3) MA gamma-BHC...	4.221	3.461	860215	2385932	0.716	0.758
4) MA Heptachlor	4.797	3.795	1093762	2347577	0.901	0.788
5) MB Aldrin	5.138	4.070	949063	2403870	0.849	0.835
6) B beta-BHC	4.431	3.759	514552	1119544	0.865	0.779
7) B delta-BHC	4.674	3.983	612616	2417453	0.550	0.762 #
8) B Heptachlo...	5.570	4.570	1004028	2437161	0.937	0.933
9) A Endosulfan I	5.956	4.935	881899	2054158	0.928	0.887
10) B trans-Chl...	5.825	4.819	886670	2380677	0.834	0.902
11) B cis-Chlor...	5.903	4.882	921542	2209346	0.874	0.857
12) B 4,4'-DDE	6.081	5.076	723119	1835361	0.754	0.757
13) MA Dieldrin	6.234	5.199	842088	2264423	0.838	0.912
14) MA Endrin	6.465	5.471	690017	1306007	0.846	0.650
15) B Endosulfa...	6.693	5.767	959408	1715213	1.094	0.835
16) A 4,4'-DDD	6.605	5.628	606825	1623297	0.788	0.855
17) MA 4,4'-DDT	6.916	5.877	707586	924958	0.869	0.483 #
18) B Endrin al...	6.822	5.947	686900	1530919	0.890m	0.865
19) B Endosulfa...	7.057	6.169	789789	1944961	0.889	0.933
20) A Methoxychlor	7.395	6.455	409687	968900	0.915m	0.965
21) B Endrin ke...	7.544	6.669	555236	2652303	0.568	1.165 #

(f)=RT Delta > 1/2 Window (#)=Amounts differ by > 25% (m)=manual int.

Data Path : Z:\pestpcbsrv\HPCHEM1\ECD_L\Data\PL072222\
 Data File : PL076560.D
 Signal(s) : Signal #1: ECD1A.ch Signal #2: ECD2B.ch
 Acq On : 22 Jul 2022 02:13
 Operator : AR\AJ
 Sample : N3670-02
 Misc : PEST MDL 1 PPB
 ALS Vial : 30 Sample Multiplier: 1

Integration File signal 1: autoint1.e
 Integration File signal 2: autoint2.e
 Quant Time: Jul 25 09:05:01 2022
 Quant Method : Z:\pestpcbsrv\HPCHEM1\ECD_L\methods\PL072122CLP.M
 Quant Title : GC Extractables
 QLast Update : Mon Jul 25 05:54:24 2022
 Response via : Initial Calibration
 Integrator: ChemStation

Volume Inj. : 1 µl
 Signal #1 Phase : ZB-MR2 Signal #2 Phase: ZB-MR1
 Signal #1 Info : 30M x 0.32mm x0.2 Signal #2 Info : 30M x 0.32mm x 0.50µm



Instrument : ECD_L
Client/Sampled : MDL-WATER-QT2-2022-04
Manual Integrations APPROVED
 Reviewed By: Aboul Mirza 07/25/2022
 Supervised By: Ankita Jodhani 07/25/2022