

Data Path : Z:\pestpcbsrv\HPCHEM1\ECD_L\Data\PL072223\
 Data File : PL084093.D
 Signal(s) : Signal #1: ECD1A.ch Signal #2: ECD2B.ch
 Acq On : 20 Jul 2023 13:30
 Operator : AR\AJ
 Sample : PB154315BL
 Misc :
 ALS Vial : 6 Sample Multiplier: 1

Instrument :
 ECD_L
 ClientSampleId :

Integration File signal 1: autoint1.e
 Integration File signal 2: autoint2.e
 Quant Time: Jul 20 21:28:02 2023
 Quant Method : Z:\pestpcbsrv\HPCHEM1\ECD_L\methods\PL071223.M
 Quant Title : GC Extractables
 QLast Update : Fri Jul 14 00:03:54 2023
 Response via : Initial Calibration
 Integrator: ChemStation

Volume Inj. : 1 µl
 Signal #1 Phase : ZB-MR2 Signal #2 Phase: ZB-MR1
 Signal #1 Info : 30M x 0.32mm x0.2 Signal #2 Info : 30M x 0.32mm x0.5µm

Compound	RT#1	RT#2	Resp#1	Resp#2	ng/ml	ng/ml

System Monitoring Compounds						
1) SA Tetrachlo...	3.486	2.689	38067713	18875947	19.035	16.997
2) SA Decachlor...	9.038	7.875	28509681	22168846	21.903	19.952
Target Compounds						
2) A alpha-BHC	3.906f	3.175f	242021	31196	0.083	0.019 #
3) MA gamma-BHC...	4.234f	0.000	184771	0	0.065	N.D. #
4) MA Heptachlor	4.848	3.871	755632	10693	0.278	0.009 #
7) B delta-BHC	4.728f	4.056	2454290	35382	0.921	0.023 #
8) B Heptachlo...	5.649f	4.644	77036	12042	0.029	0.009 #
10) B gamma-Chl...	0.000	4.926f	0	154576	N.D.	0.116 #
11) B alpha-Chl...	0.000	4.984	0	78439	N.D.	0.058 #
14) MA Endrin	0.000	5.559	0	17132	N.D.	0.016 #
18) B Endrin al...	0.000	6.047	0	12264	N.D.	0.014 #
20) A Methoxychlor	0.000	6.586f	0	330882	N.D.	0.690 #
24) Chlordane-2	0.000	4.269	0	12567	N.D.	0.030 #
25) Chlordane-3	0.000	4.926f	0	154576	N.D.	0.113 #
26) Chlordane-4	0.000	4.984f	0	78439	N.D.	0.055 #

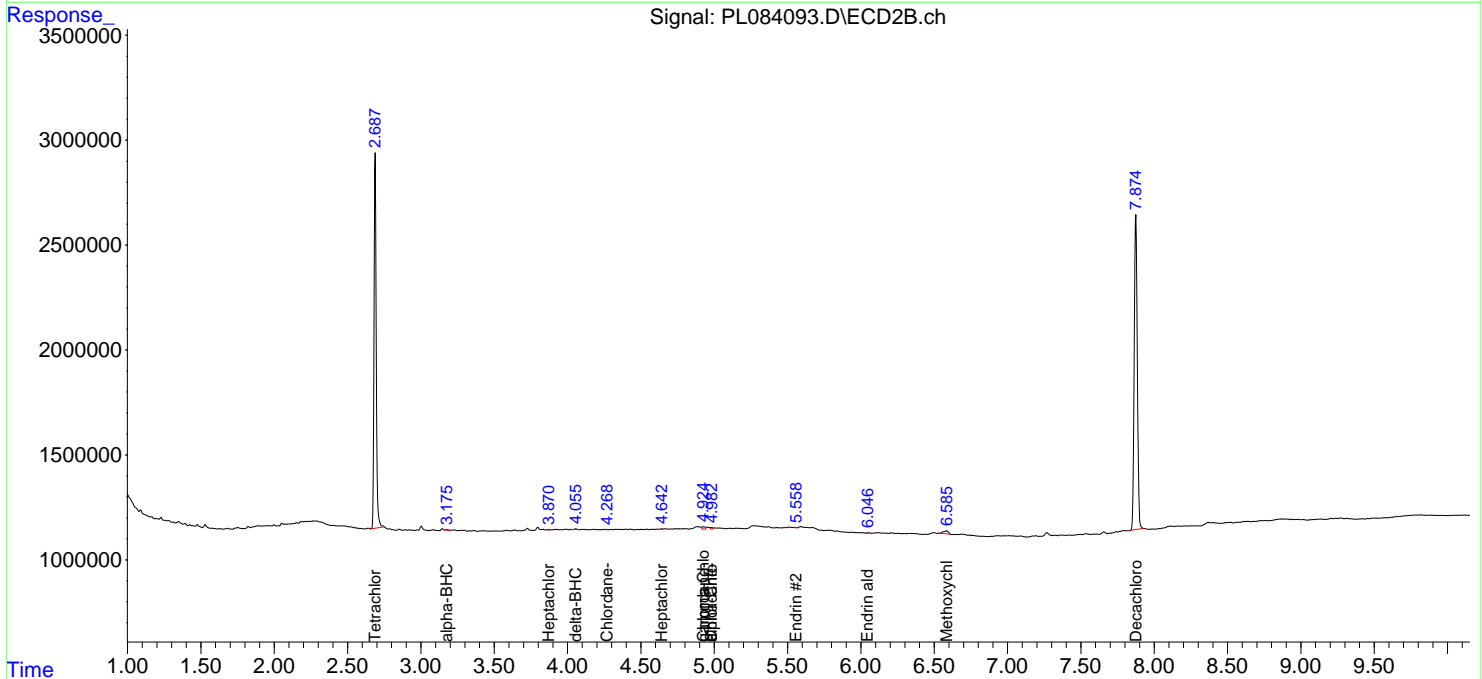
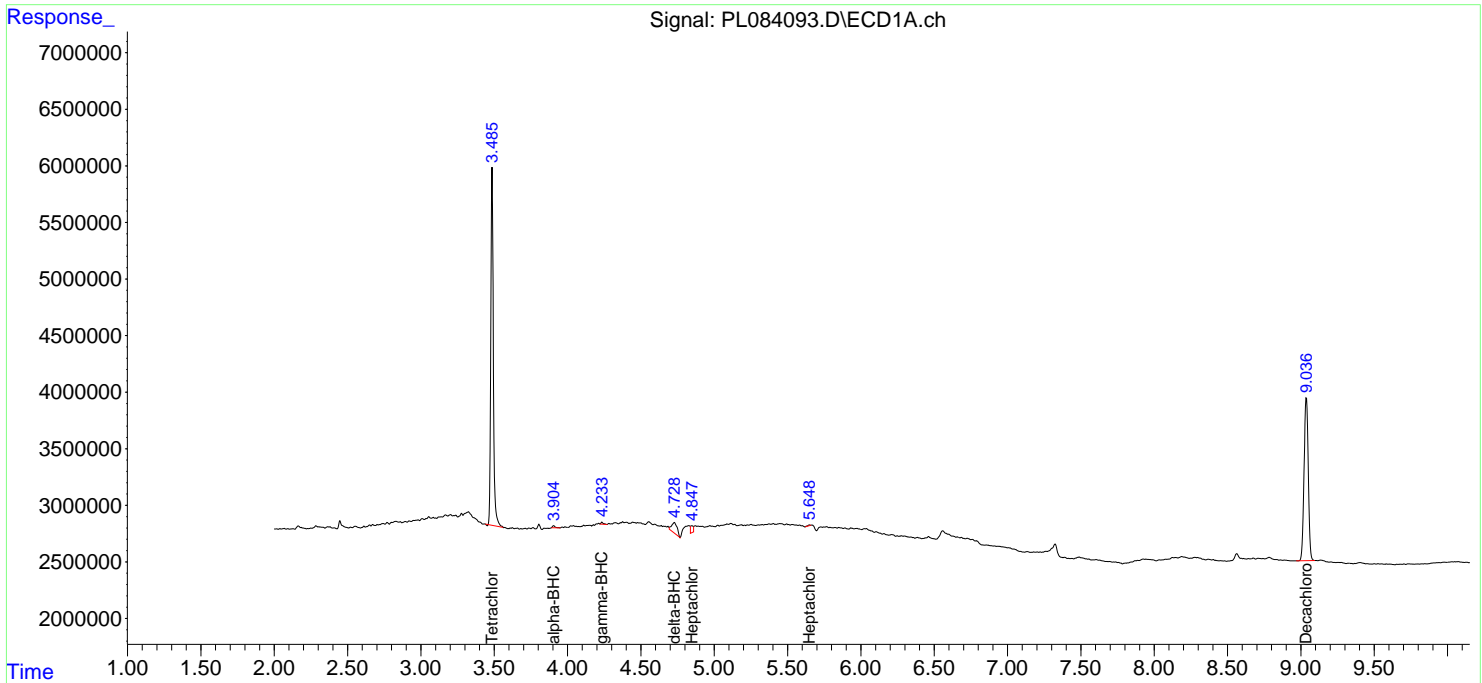
(f)=RT Delta > 1/2 Window (#)=Amounts differ by > 25% (m)=manual int.

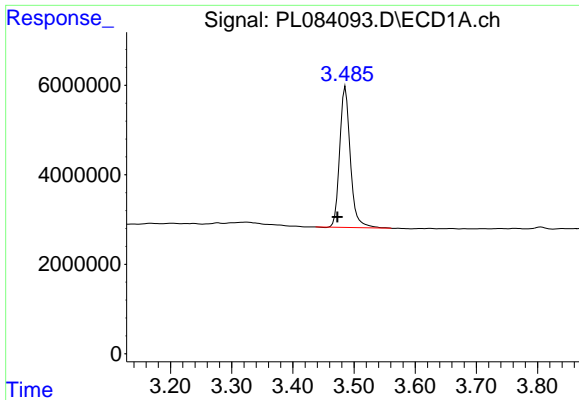
Data Path : Z:\pestpcbsrv\HPCHEM1\ECD_L\Data\PL072223\
 Data File : PL084093.D
 Signal(s) : Signal #1: ECD1A.ch Signal #2: ECD2B.ch
 Acq On : 20 Jul 2023 13:30
 Operator : AR\AJ
 Sample : PB154315BL
 Misc :
 ALS Vial : 6 Sample Multiplier: 1

Instrument :
 ECD_L
 ClientSampleId :

Integration File signal 1: autoint1.e
 Integration File signal 2: autoint2.e
 Quant Time: Jul 20 21:28:02 2023
 Quant Method : Z:\pestpcbsrv\HPCHEM1\ECD_L\methods\PL071223.M
 Quant Title : GC Extractables
 QLast Update : Fri Jul 14 00:03:54 2023
 Response via : Initial Calibration
 Integrator: ChemStation

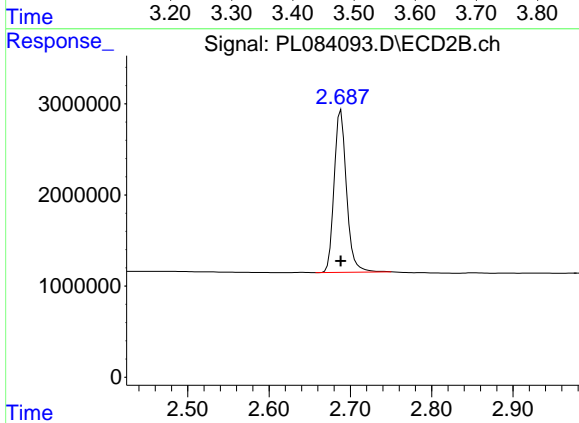
Volume Inj. : 1 µl
 Signal #1 Phase : ZB-MR2 Signal #2 Phase: ZB-MR1
 Signal #1 Info : 30M x 0.32mm x0.2 Signal #2 Info : 30M x 0.32mm x0.5µm



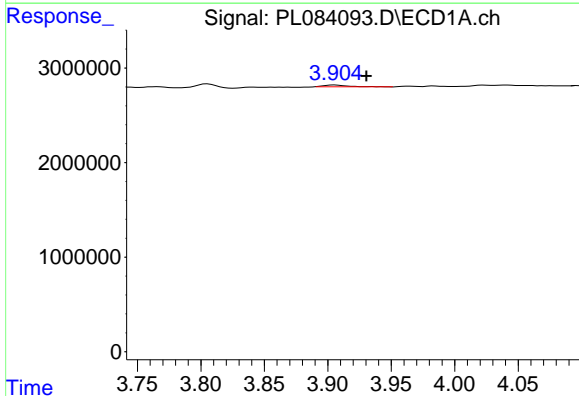


#1 Tetrachloro-m-xylene
 R.T.: 3.486 min
 Delta R.T.: 0.013 min
 Response: 38067713
 Conc: 19.03 ng/ml

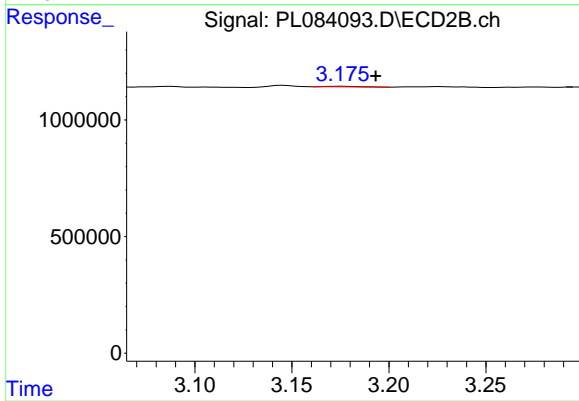
Instrument :
 ECD_L
 ClientSampleId :



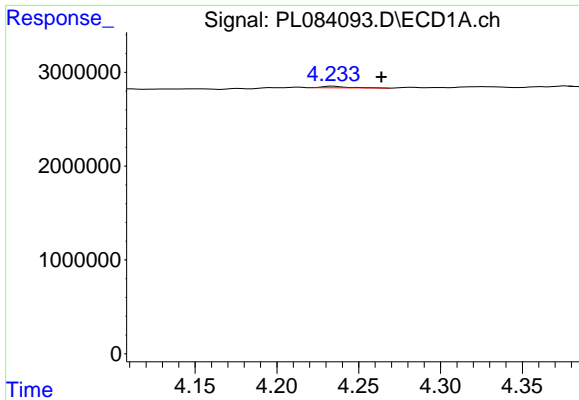
#1 Tetrachloro-m-xylene
 R.T.: 2.689 min
 Delta R.T.: 0.000 min
 Response: 18875947
 Conc: 17.00 ng/ml



#2 alpha-BHC
 R.T.: 3.906 min
 Delta R.T.: -0.025 min
 Response: 242021
 Conc: 0.08 ng/ml

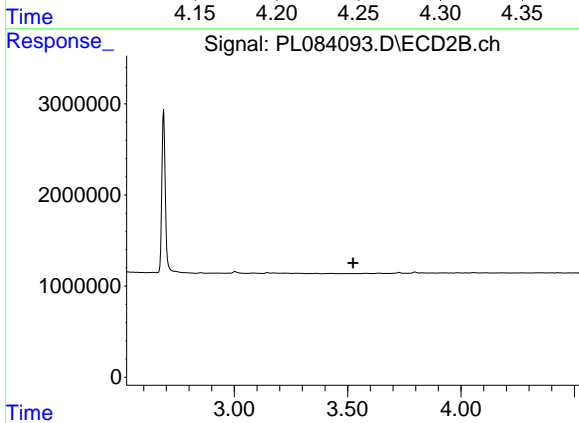


#2 alpha-BHC
 R.T.: 3.175 min
 Delta R.T.: -0.018 min
 Response: 31196
 Conc: 0.02 ng/ml

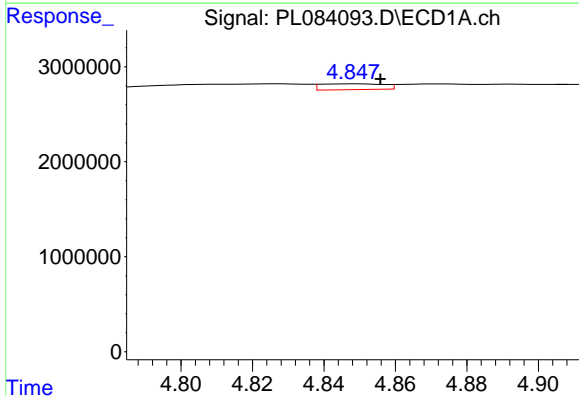


#3 gamma-BHC (Lindane)
 R.T.: 4.234 min
 Delta R.T.: -0.030 min
 Response: 184771
 Conc: 0.07 ng/ml

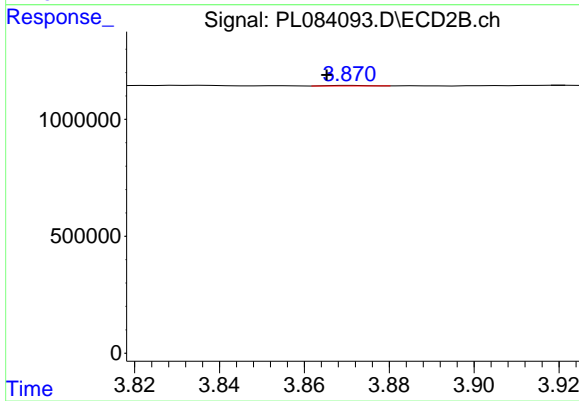
Instrument :
 ECD_L
 ClientSampleId :



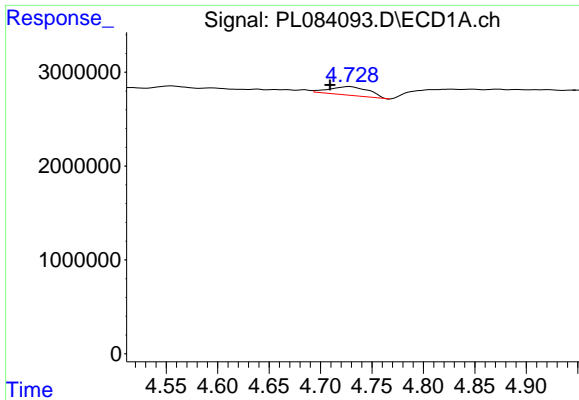
#3 gamma-BHC (Lindane)
 R.T.: 0.000 min
 Exp R.T. : 3.524 min
 Response: 0
 Conc: N.D.



#4 Heptachlor
 R.T.: 4.848 min
 Delta R.T.: -0.007 min
 Response: 755632
 Conc: 0.28 ng/ml



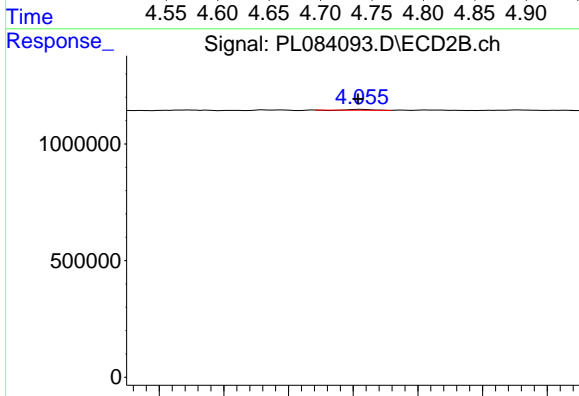
#4 Heptachlor
 R.T.: 3.871 min
 Delta R.T.: 0.006 min
 Response: 10693
 Conc: 0.01 ng/ml



#7 delta-BHC

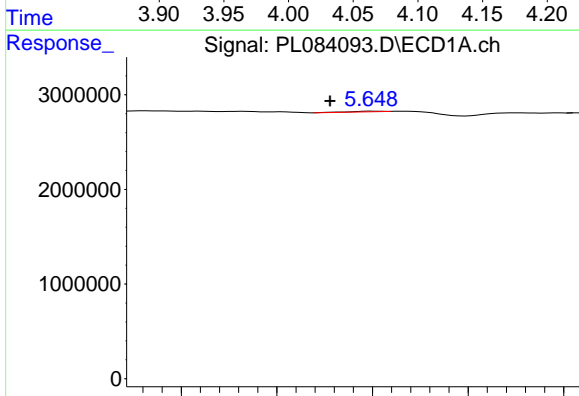
R.T.: 4.728 min
 Delta R.T.: 0.019 min
 Response: 2454290
 Conc: 0.92 ng/ml

Instrument :
 ECD_L
 ClientSampleId :



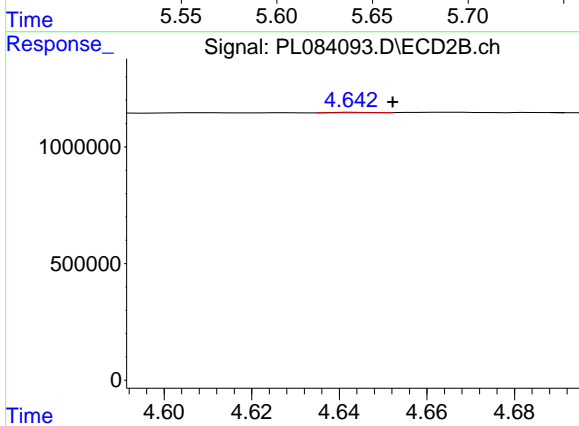
#7 delta-BHC

R.T.: 4.056 min
 Delta R.T.: 0.003 min
 Response: 35382
 Conc: 0.02 ng/ml



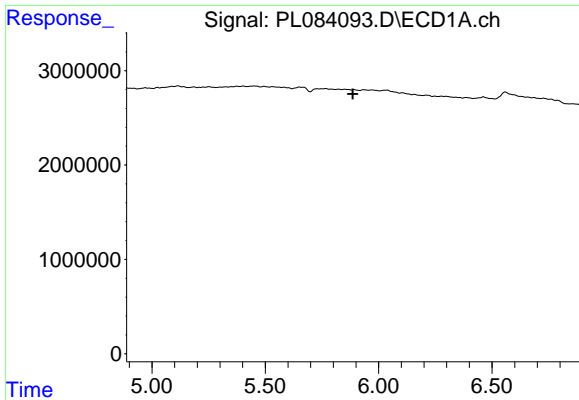
#8 Heptachlor epoxide

R.T.: 5.649 min
 Delta R.T.: 0.022 min
 Response: 77036
 Conc: 0.03 ng/ml



#8 Heptachlor epoxide

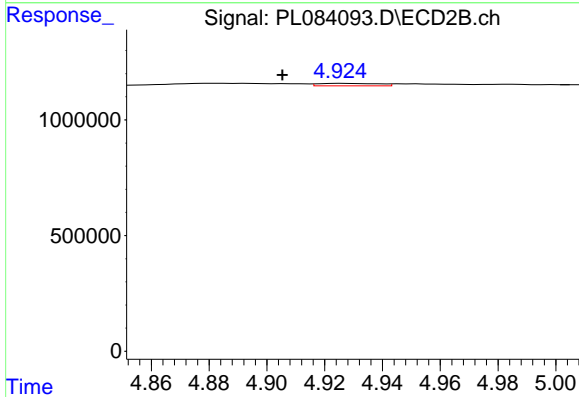
R.T.: 4.644 min
 Delta R.T.: -0.008 min
 Response: 12042
 Conc: 0.01 ng/ml



#10 gamma-Chlordane

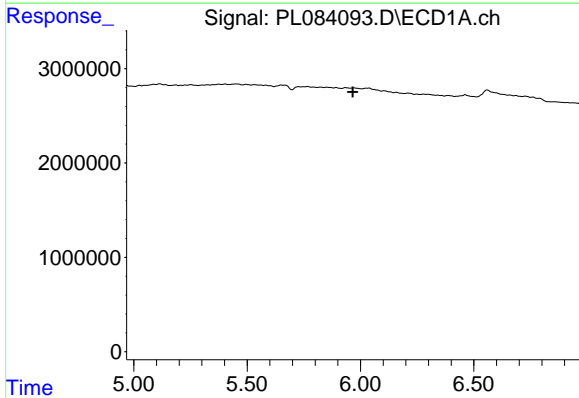
R.T.: 0.000 min
 Exp R.T.: 5.886 min
 Response: 0
 Conc: N.D.

Instrument :
 ECD_L
 ClientSampleId :



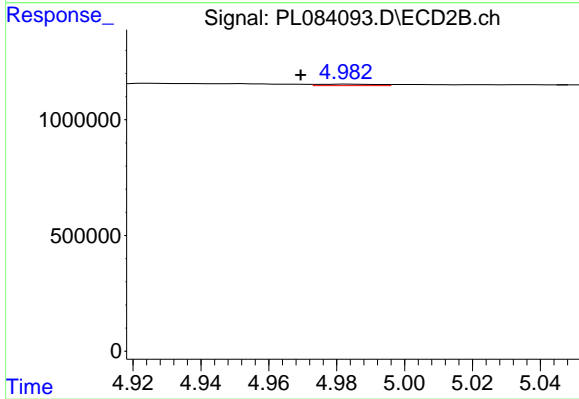
#10 gamma-Chlordane

R.T.: 4.926 min
 Delta R.T.: 0.020 min
 Response: 154576
 Conc: 0.12 ng/ml



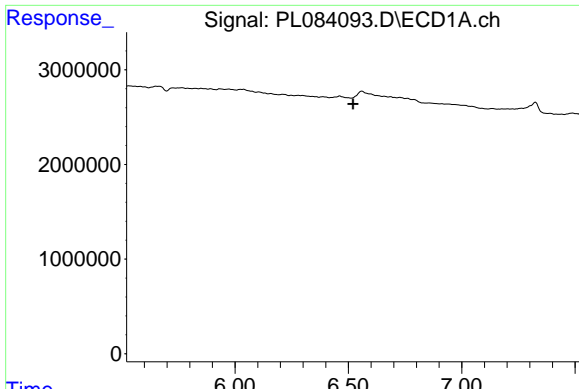
#11 alpha-Chlordane

R.T.: 0.000 min
 Exp R.T.: 5.965 min
 Response: 0
 Conc: N.D.



#11 alpha-Chlordane

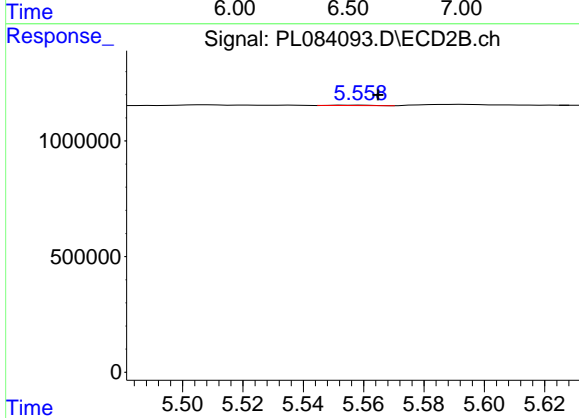
R.T.: 4.984 min
 Delta R.T.: 0.014 min
 Response: 78439
 Conc: 0.06 ng/ml



#14 Endrin

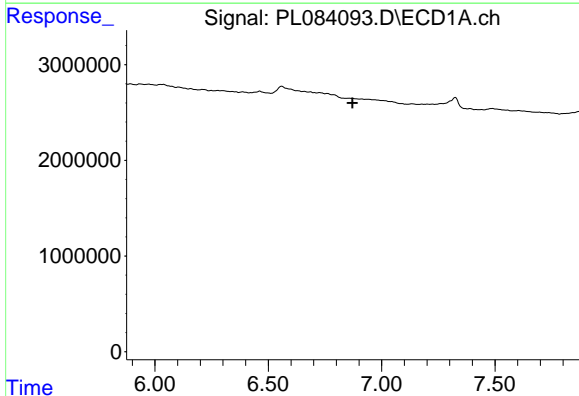
R.T.: 0.000 min
 Exp R.T.: 6.520 min
 Response: 0
 Conc: N.D.

Instrument :
 ECD_L
 ClientSampleId :



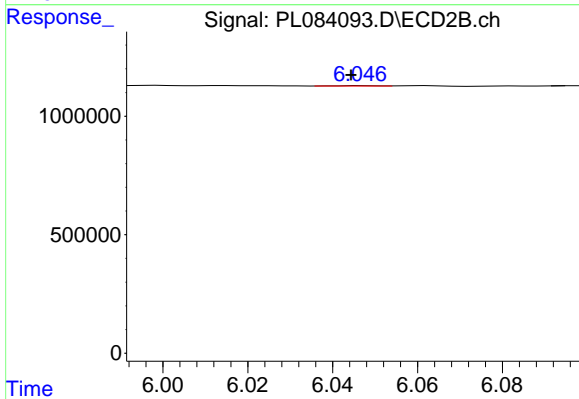
#14 Endrin

R.T.: 5.559 min
 Delta R.T.: -0.005 min
 Response: 17132
 Conc: 0.02 ng/ml



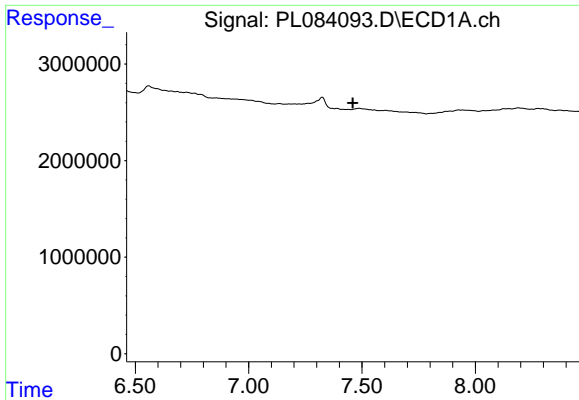
#18 Endrin aldehyde

R.T.: 0.000 min
 Exp R.T.: 6.872 min
 Response: 0
 Conc: N.D.



#18 Endrin aldehyde

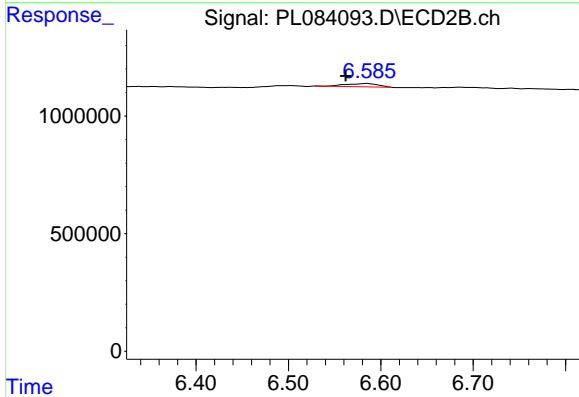
R.T.: 6.047 min
 Delta R.T.: 0.003 min
 Response: 12264
 Conc: 0.01 ng/ml



#20 Methoxychlor

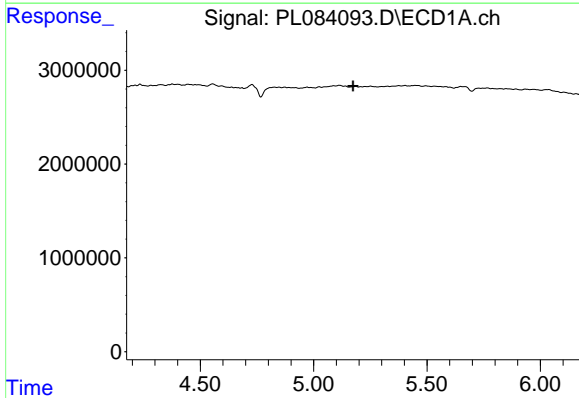
R.T.: 0.000 min
 Exp R.T.: 7.459 min
 Response: 0
 Conc: N.D.

Instrument :
 ECD_L
 ClientSampleId :



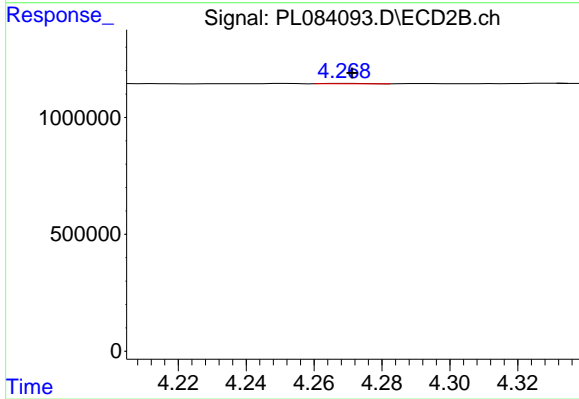
#20 Methoxychlor

R.T.: 6.586 min
 Delta R.T.: 0.024 min
 Response: 330882
 Conc: 0.69 ng/ml



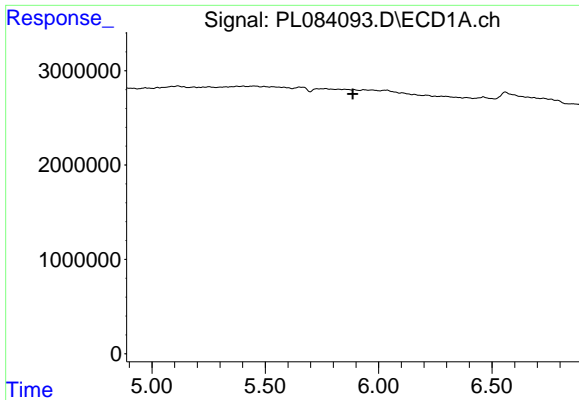
#24 Chlordane-2

R.T.: 0.000 min
 Exp R.T.: 5.174 min
 Response: 0
 Conc: N.D.



#24 Chlordane-2

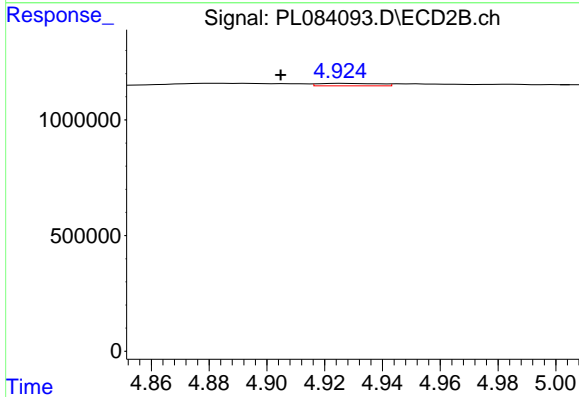
R.T.: 4.269 min
 Delta R.T.: -0.002 min
 Response: 12567
 Conc: 0.03 ng/ml



#25 Chlordane-3

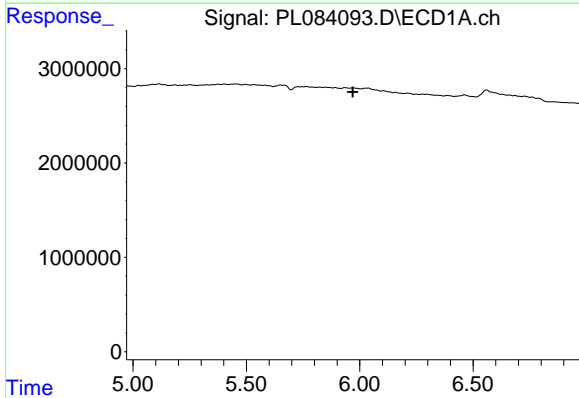
R.T.: 0.000 min
 Exp R.T.: 5.887 min
 Response: 0
 Conc: N.D.

Instrument :
 ECD_L
 ClientSampleId :



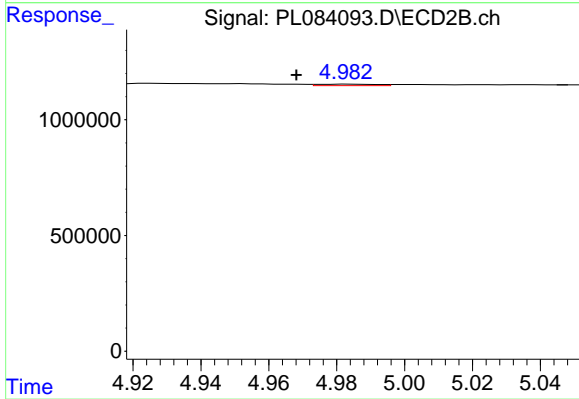
#25 Chlordane-3

R.T.: 4.926 min
 Delta R.T.: 0.021 min
 Response: 154576
 Conc: 0.11 ng/ml



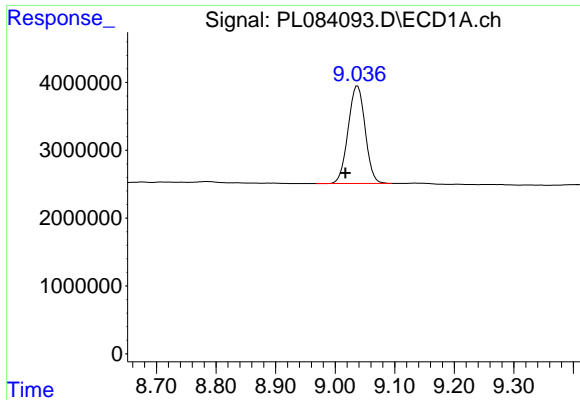
#26 Chlordane-4

R.T.: 0.000 min
 Exp R.T.: 5.970 min
 Response: 0
 Conc: N.D.



#26 Chlordane-4

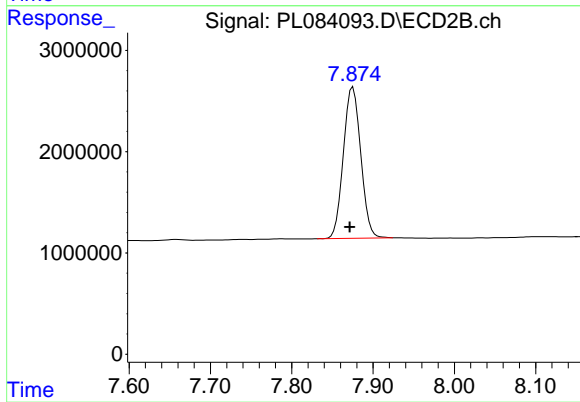
R.T.: 4.984 min
 Delta R.T.: 0.016 min
 Response: 78439
 Conc: 0.05 ng/ml



#28 Decachlorobiphenyl

R.T.: 9.038 min
Delta R.T.: 0.020 min
Response: 28509681
Conc: 21.90 ng/ml

Instrument :
ECD_L
ClientSampleId :



#28 Decachlorobiphenyl

R.T.: 7.875 min
Delta R.T.: 0.004 min
Response: 22168846
Conc: 19.95 ng/ml