

Data Path : Z:\pestpcbsrv\HPCHEM1\ECD_L\Data\PL072321\
 Data File : PL068417.D
 Signal(s) : Signal #1: ECD1A.ch Signal #2: ECD2B.ch
 Acq On : 23 Jul 2021 09:10
 Operator : AR\AJ
 Sample : I.BLK
 Misc :
 ALS Vial : 2 Sample Multiplier: 1

Instrument :
 ECD_L
 ClientSampleId :
 I.BLK

Integration File signal 1: autoint1.e
 Integration File signal 2: autoint2.e
 Quant Time: Jul 26 04:52:02 2021
 Quant Method : Z:\pestpcbsrv\HPCHEM1\ECD_L\methods\PL071921.M
 Quant Title : GC Extractables
 QLast Update : Tue Jul 20 11:44:21 2021
 Response via : Initial Calibration
 Integrator: ChemStation

Volume Inj. : 1 µl
 Signal #1 Phase : ZB-MR2 Signal #2 Phase: ZB-MR1
 Signal #1 Info : 30M x 0.32mm x0.2 Signal #2 Info : 30M x 0.32mm x0.5µm

Compound	RT#1	RT#2	Resp#1	Resp#2	ng/ml	ng/ml

System Monitoring Compounds						
1) SA Tetrachlo...	4.644	5.572	10039370	21391882	23.392	20.964
28) SA Decachlor...	10.419	11.494	13396448	19994825	23.819	22.416

Target Compounds

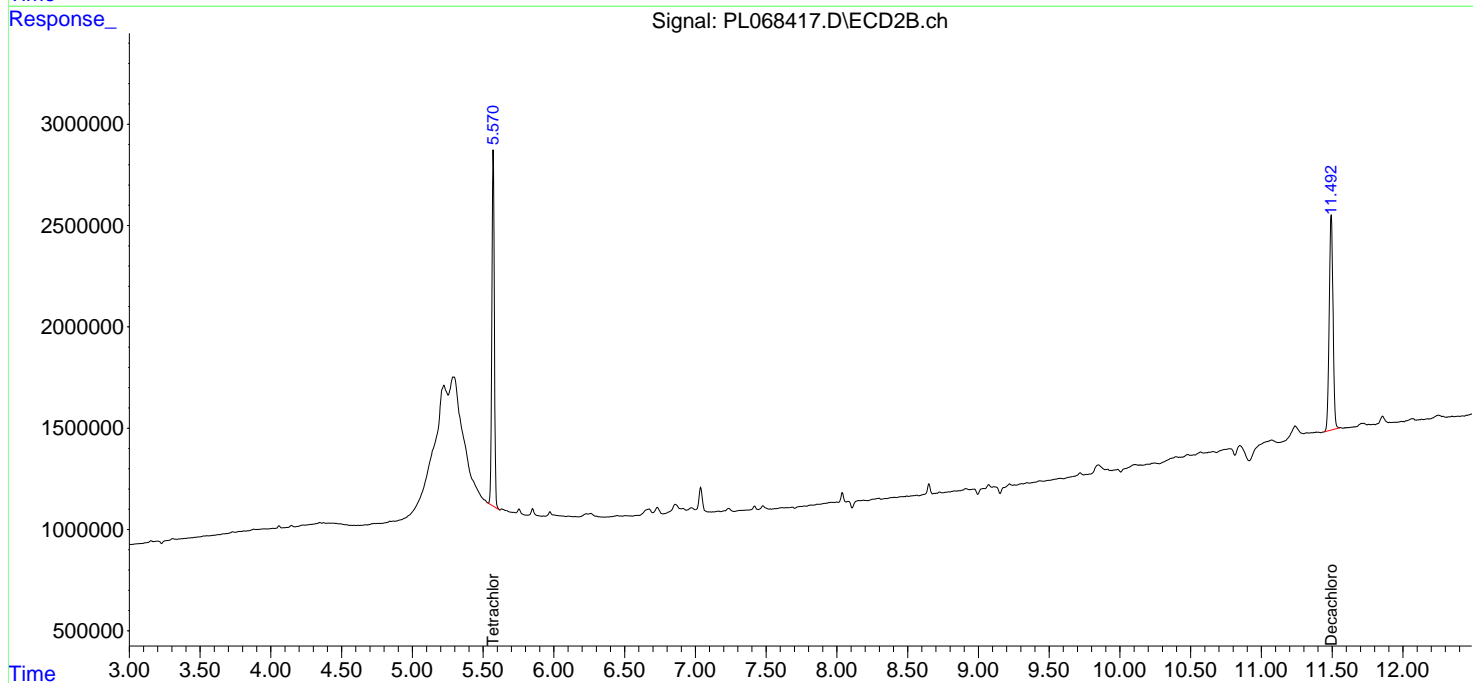
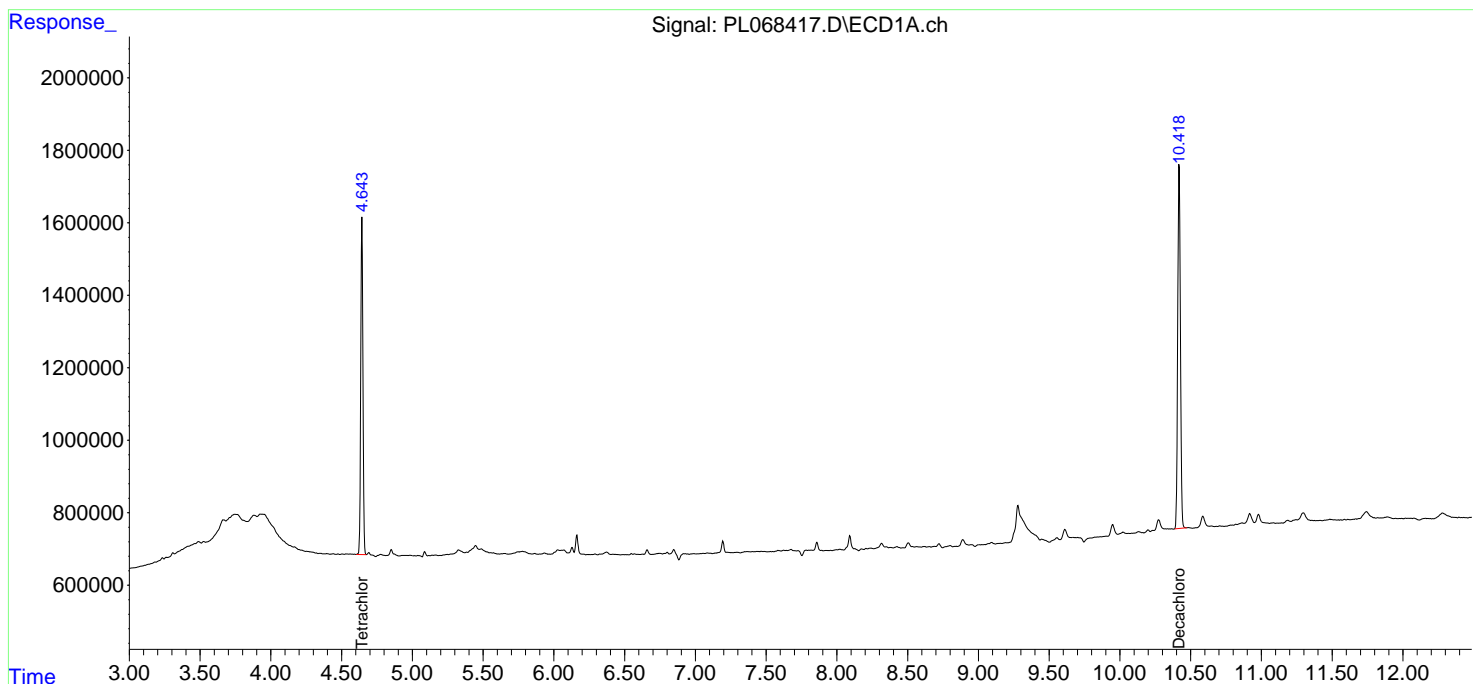
(f)=RT Delta > 1/2 Window (#)=Amounts differ by > 25% (m)=manual int.

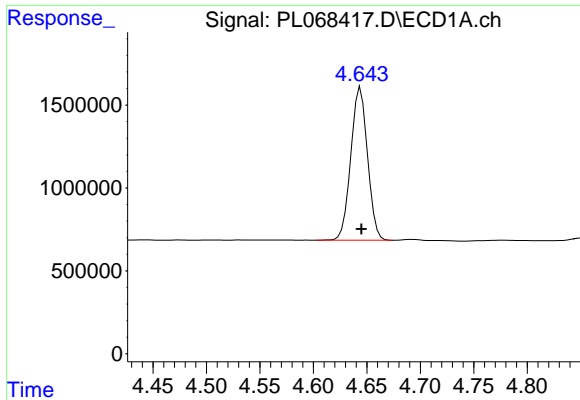
Data Path : Z:\pestpcbsrv\HPCHEM1\ECD_L\Data\PL072321\
 Data File : PL068417.D
 Signal(s) : Signal #1: ECD1A.ch Signal #2: ECD2B.ch
 Acq On : 23 Jul 2021 09:10
 Operator : AR\AJ
 Sample : I.BLK
 Misc :
 ALS Vial : 2 Sample Multiplier: 1

Instrument :
 ECD_L
 ClientSampled :
 I.BLK

Integration File signal 1: autoint1.e
 Integration File signal 2: autoint2.e
 Quant Time: Jul 26 04:52:02 2021
 Quant Method : Z:\pestpcbsrv\HPCHEM1\ECD_L\methods\PL071921.M
 Quant Title : GC Extractables
 QLast Update : Tue Jul 20 11:44:21 2021
 Response via : Initial Calibration
 Integrator: ChemStation

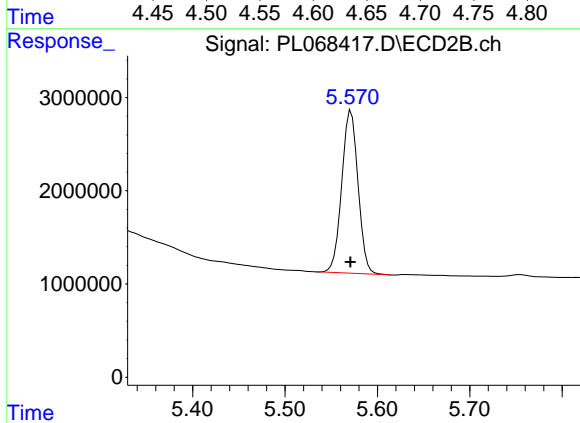
Volume Inj. : 1 µl
 Signal #1 Phase : ZB-MR2 Signal #2 Phase: ZB-MR1
 Signal #1 Info : 30M x 0.32mm x0.2 Signal #2 Info : 30M x 0.32mm x0.5µm



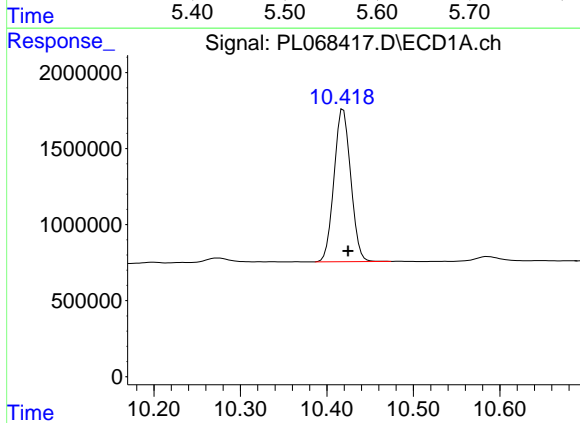


#1 Tetrachloro-m-xylene
 R.T.: 4.644 min
 Delta R.T.: 0.000 min
 Response: 10039370
 Conc: 23.39 ng/ml

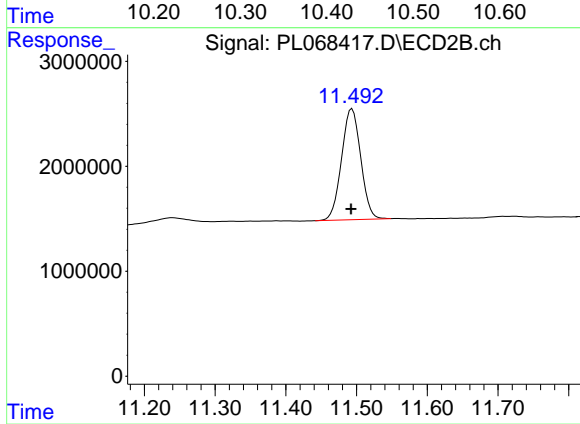
Instrument :
 ECD_L
 ClientSampleId :
 I.BLK



#1 Tetrachloro-m-xylene
 R.T.: 5.572 min
 Delta R.T.: 0.000 min
 Response: 21391882
 Conc: 20.96 ng/ml



#28 Decachlorobiphenyl
 R.T.: 10.419 min
 Delta R.T.: -0.005 min
 Response: 13396448
 Conc: 23.82 ng/ml



#28 Decachlorobiphenyl
 R.T.: 11.494 min
 Delta R.T.: 0.001 min
 Response: 19994825
 Conc: 22.42 ng/ml