

Data Path : Z:\pestpcbsrv\HPCHEM1\ECD_L\Data\PL072321\
 Data File : PL068424.D
 Signal(s) : Signal #1: ECD1A.ch Signal #2: ECD2B.ch
 Acq On : 23 Jul 2021 13:08
 Operator : AR\AJ
 Sample : PB137863BS
 Misc : CHLOR.BS
 ALS Vial : 9 Sample Multiplier: 1

Instrument :
 ECD_L
ClientSampleId :
 PB137863BS

Manual Integrations
APPROVED
 mohammad
 7/27/2021 8:10:20 AM

Integration File signal 1: autoint1.e
 Integration File signal 2: autoint2.e
 Quant Time: Jul 26 04:53:37 2021
 Quant Method : Z:\pestpcbsrv\HPCHEM1\ECD_L\methods\PL071921.M
 Quant Title : GC Extractables
 QLast Update : Tue Jul 20 11:44:21 2021
 Response via : Initial Calibration
 Integrator: ChemStation

Volume Inj. : 1 µl
 Signal #1 Phase : ZB-MR2 Signal #2 Phase: ZB-MR1
 Signal #1 Info : 30M x 0.32mm x0.2 Signal #2 Info : 30M x 0.32mm x0.5µm

Compound	RT#1	RT#2	Resp#1	Resp#2	ng/ml	ng/ml

System Monitoring Compounds						
1) SA Tetrachlo...	4.645	5.571	11910404	21266111	27.751	20.840
28) SA Decachlor...	10.422	11.498	13010778	19559719	23.134	21.928
Target Compounds						
23) Chlordane-1	5.976	6.956	3530554	7140004	234.709	176.254
24) Chlordane-2	6.666	7.546	5126087	8491946	239.011	204.109m
25) Chlordane-3	7.367	8.304	11859853	30681632	220.223m	198.113m
26) Chlordane-4	7.437	8.388	12278501	37566999	217.473	200.378
27) Chlordane-5	8.387	9.274	4716177	6796570	234.330	212.057m

(f)=RT Delta > 1/2 Window (#)=Amounts differ by > 25% (m)=manual int.

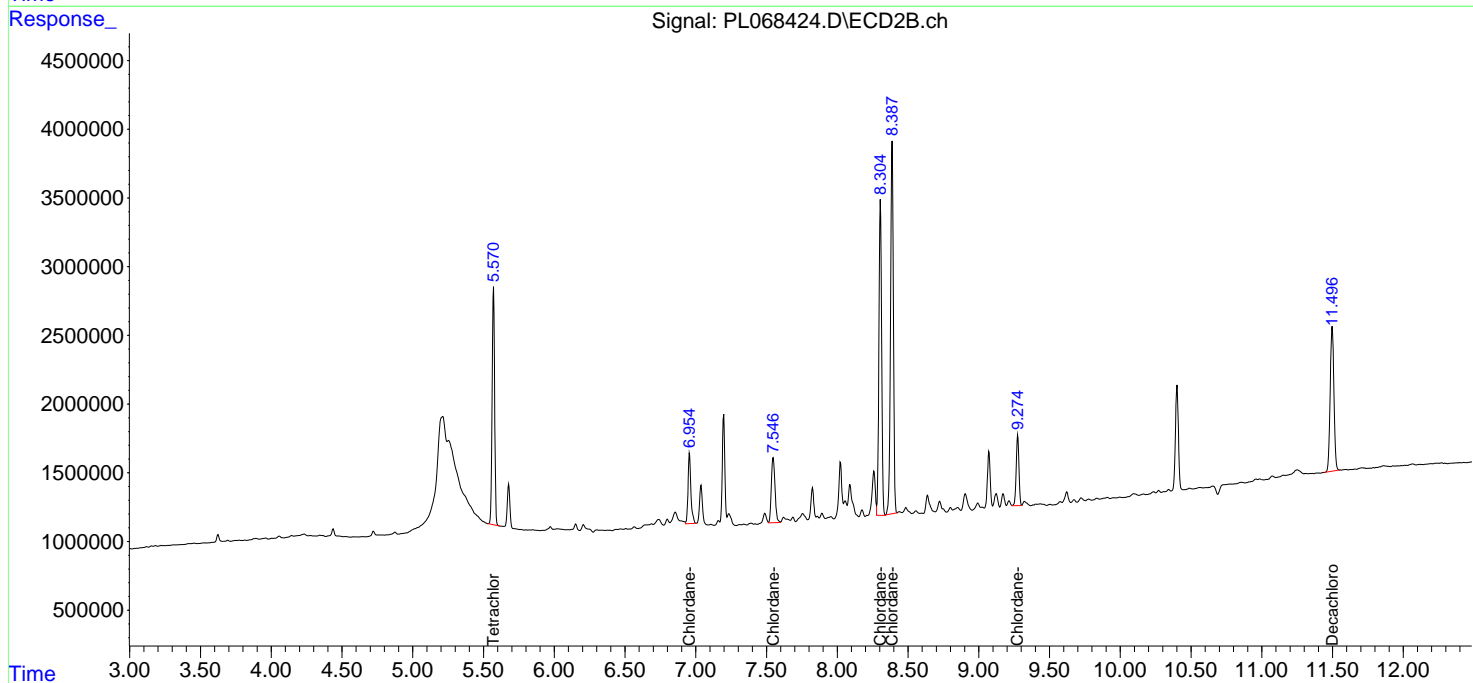
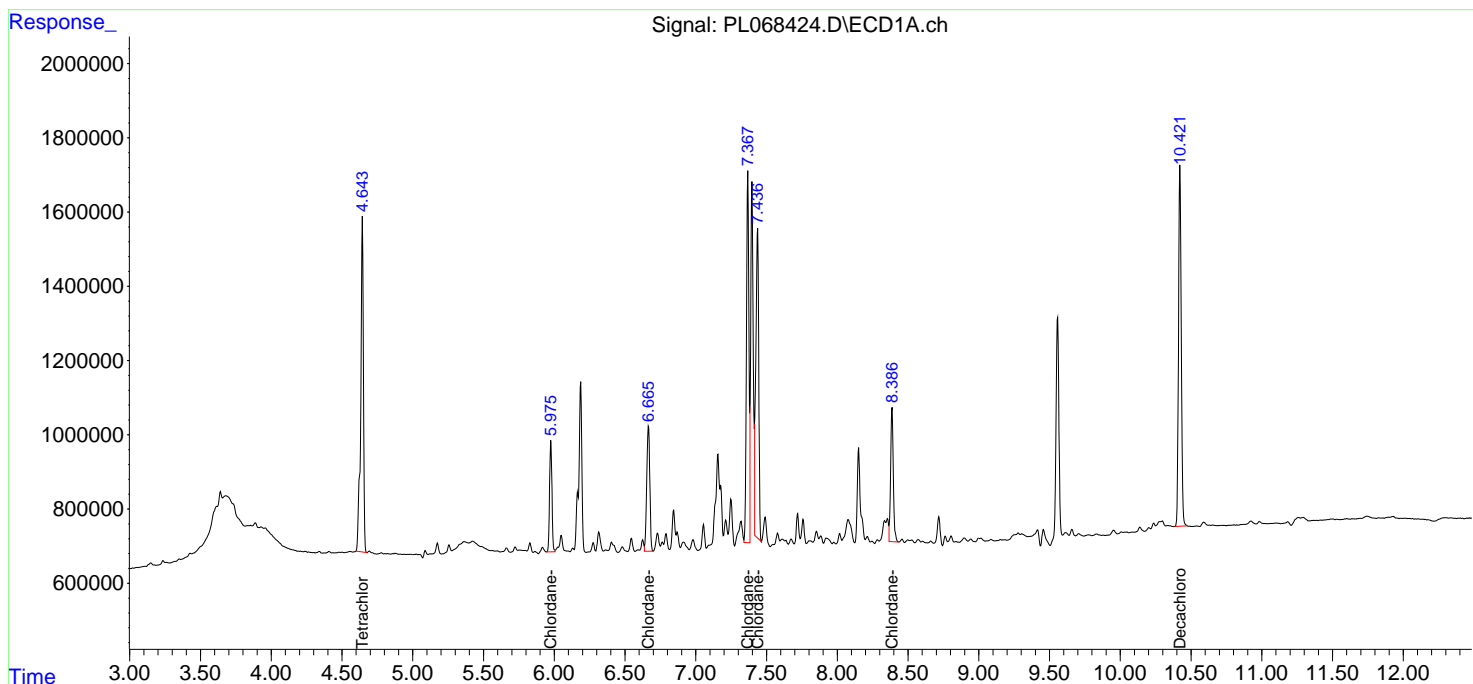
Data Path : Z:\pestpcbsrv\HPCHEM1\ECD_L\Data\PL072321\
 Data File : PL068424.D
 Signal(s) : Signal #1: ECD1A.ch Signal #2: ECD2B.ch
 Acq On : 23 Jul 2021 13:08
 Operator : AR\AJ
 Sample : PB137863BS
 Misc : CHLOR.BS
 ALS Vial : 9 Sample Multiplier: 1

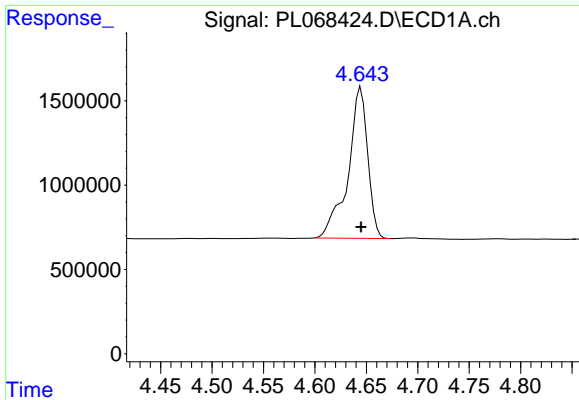
Instrument :
 ECD_L
ClientSampled :
 PB137863BS

Manual Integrations
APPROVED
 mohammad
 7/27/2021 8:10:20 AM

Integration File signal 1: autoint1.e
 Integration File signal 2: autoint2.e
 Quant Time: Jul 26 04:53:37 2021
 Quant Method : Z:\pestpcbsrv\HPCHEM1\ECD_L\methods\PL071921.M
 Quant Title : GC Extractables
 QLast Update : Tue Jul 20 11:44:21 2021
 Response via : Initial Calibration
 Integrator: ChemStation

Volume Inj. : 1 µl
 Signal #1 Phase : ZB-MR2 Signal #2 Phase: ZB-MR1
 Signal #1 Info : 30M x 0.32mm x0.2 Signal #2 Info : 30M x 0.32mm x0.5µm

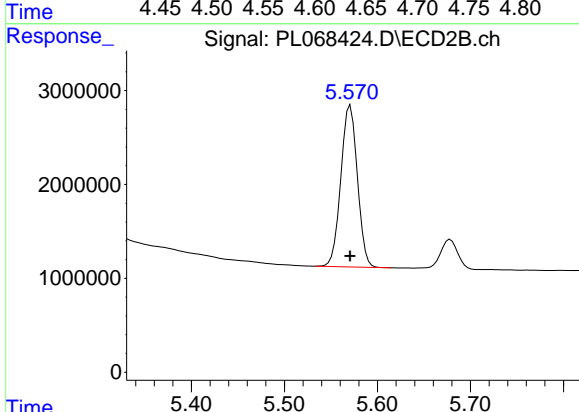




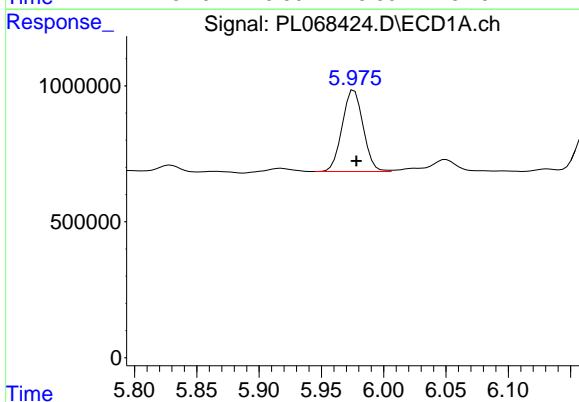
#1 Tetrachloro-m-xylene
 R.T.: 4.645 min
 Delta R.T.: 0.000 min
 Response: 11910404
 Conc: 27.75 ng/ml

Instrument :
 ECD_L
ClientSampled :
 PB137863BS

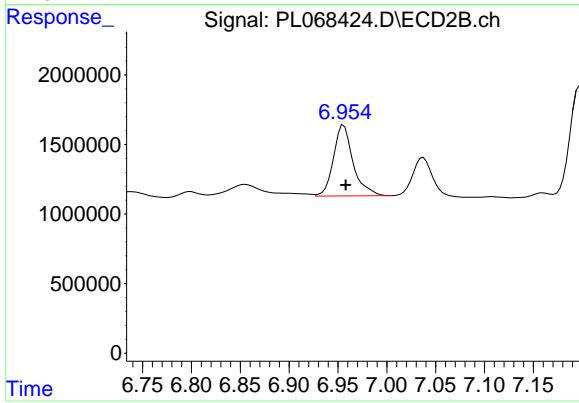
Manual Integrations
APPROVED
 mohammad
 7/27/2021 8:10:20 AM



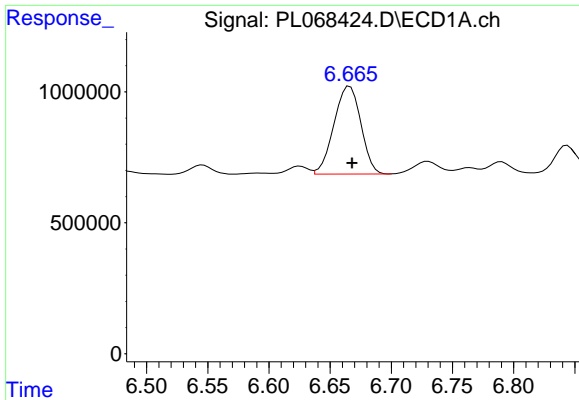
#1 Tetrachloro-m-xylene
 R.T.: 5.571 min
 Delta R.T.: 0.000 min
 Response: 21266111
 Conc: 20.84 ng/ml



#23 Chlordane-1
 R.T.: 5.976 min
 Delta R.T.: -0.002 min
 Response: 3530554
 Conc: 234.71 ng/ml



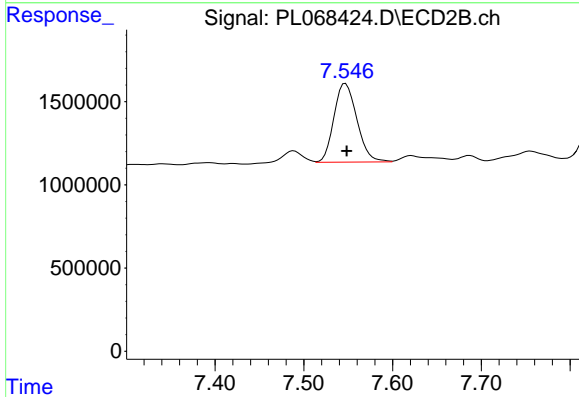
#23 Chlordane-1
 R.T.: 6.956 min
 Delta R.T.: -0.002 min
 Response: 7140004
 Conc: 176.25 ng/ml



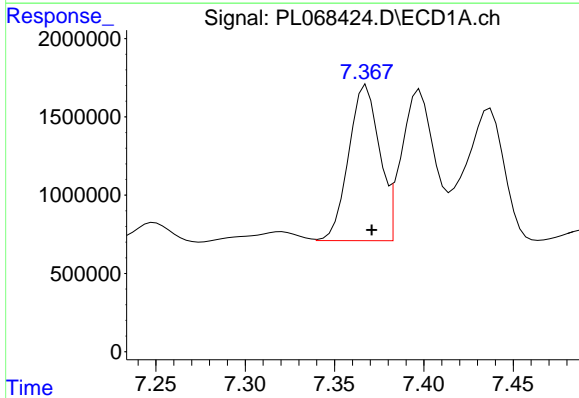
#24 Chlordane-2
 R.T.: 6.666 min
 Delta R.T.: -0.002 min
 Response: 5126087
 Conc: 239.01 ng/ml

Instrument :
 ECD_L
ClientSampled :
 PB137863BS

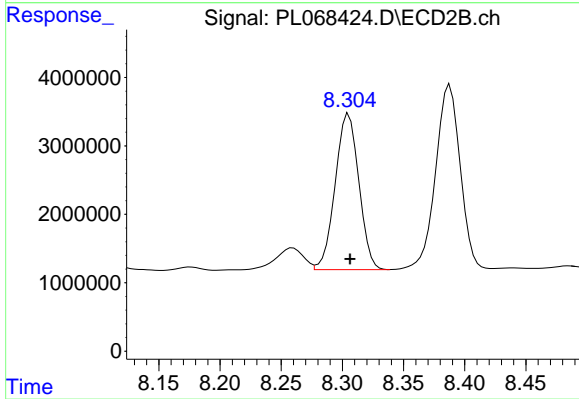
Manual Integrations
APPROVED
 mohammad
 7/27/2021 8:10:20 AM



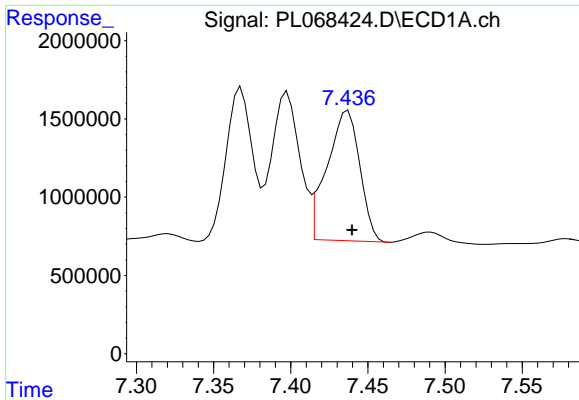
#24 Chlordane-2
 R.T.: 7.546 min
 Delta R.T.: -0.003 min
 Response: 8491946
 Conc: 204.11 ng/ml m



#25 Chlordane-3
 R.T.: 7.367 min
 Delta R.T.: -0.004 min
 Response: 11859853
 Conc: 220.22 ng/ml m



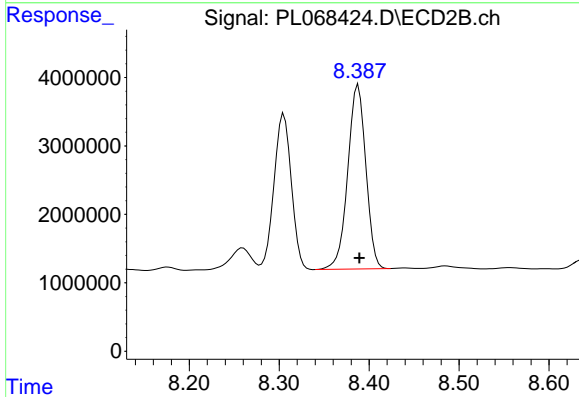
#25 Chlordane-3
 R.T.: 8.304 min
 Delta R.T.: -0.002 min
 Response: 30681632
 Conc: 198.11 ng/ml m



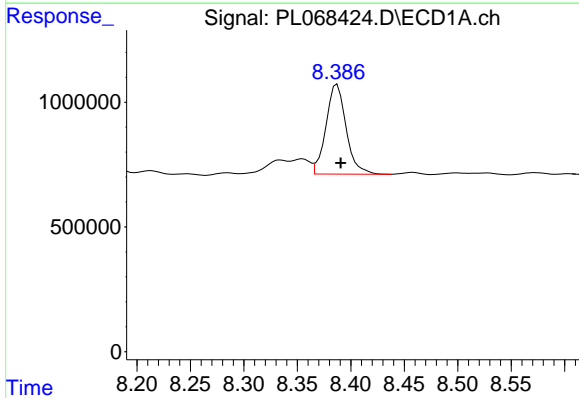
#26 Chlordane-4
 R.T.: 7.437 min
 Delta R.T.: -0.003 min
 Response: 12278501
 Conc: 217.47 ng/ml

Instrument :
 ECD_L
 ClientSampled :
 PB137863BS

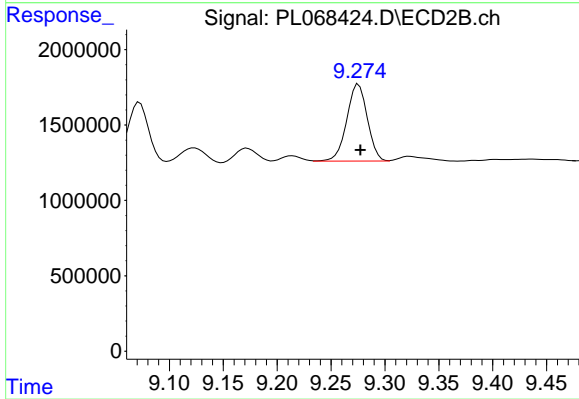
Manual Integrations
APPROVED
 mohammad
 7/27/2021 8:10:20 AM



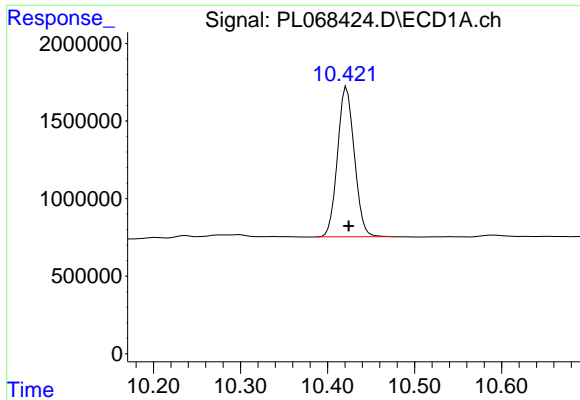
#26 Chlordane-4
 R.T.: 8.388 min
 Delta R.T.: -0.001 min
 Response: 37566999
 Conc: 200.38 ng/ml



#27 Chlordane-5
 R.T.: 8.387 min
 Delta R.T.: -0.003 min
 Response: 4716177
 Conc: 234.33 ng/ml



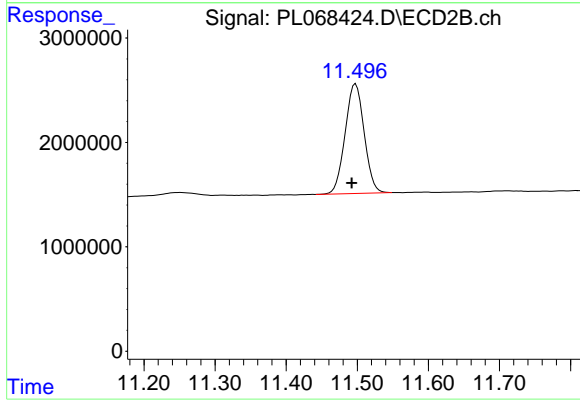
#27 Chlordane-5
 R.T.: 9.274 min
 Delta R.T.: -0.003 min
 Response: 6796570
 Conc: 212.06 ng/ml m



#28 Decachlorobiphenyl
R.T.: 10.422 min
Delta R.T.: -0.002 min
Response: 13010778
Conc: 23.13 ng/ml

Instrument :
ECD_L
ClientSampled :
PB137863BS

Manual Integrations
APPROVED
mohammad
7/27/2021 8:10:20 AM



#28 Decachlorobiphenyl
R.T.: 11.498 min
Delta R.T.: 0.006 min
Response: 19559719
Conc: 21.93 ng/ml