

Data Path : Z:\pestpcbsrv\HPCHEM1\ECD\_L\Data\PL072321\  
 Data File : PL068435.D  
 Signal(s) : Signal #1: ECD1A.ch Signal #2: ECD2B.ch  
 Acq On : 23 Jul 2021 17:04  
 Operator : AR\AJ  
 Sample : M3150-01  
 Misc :  
 ALS Vial : 16 Sample Multiplier: 1

Instrument :  
 ECD\_L  
 ClientSampleId :  
 TP-B

Integration File signal 1: autoint1.e  
 Integration File signal 2: autoint2.e  
 Quant Time: Jul 26 04:55:55 2021  
 Quant Method : Z:\pestpcbsrv\HPCHEM1\ECD\_L\methods\PL071921.M  
 Quant Title : GC Extractables  
 QLast Update : Tue Jul 20 11:44:21 2021  
 Response via : Initial Calibration  
 Integrator: ChemStation

Volume Inj. : 1 µl  
 Signal #1 Phase : ZB-MR2 Signal #2 Phase: ZB-MR1  
 Signal #1 Info : 30M x 0.32mm x0.2 Signal #2 Info : 30M x 0.32mm x0.5µm

Compound	RT#1	RT#2	Resp#1	Resp#2	ng/ml	ng/ml
-----						
System Monitoring Compounds						
1) SA Tetrachlo...	4.642	5.570	9834126	21720796	22.914	21.286
28) SA Decachlor...	10.418	11.491	11410690	19001701	20.289	21.303

Target Compounds

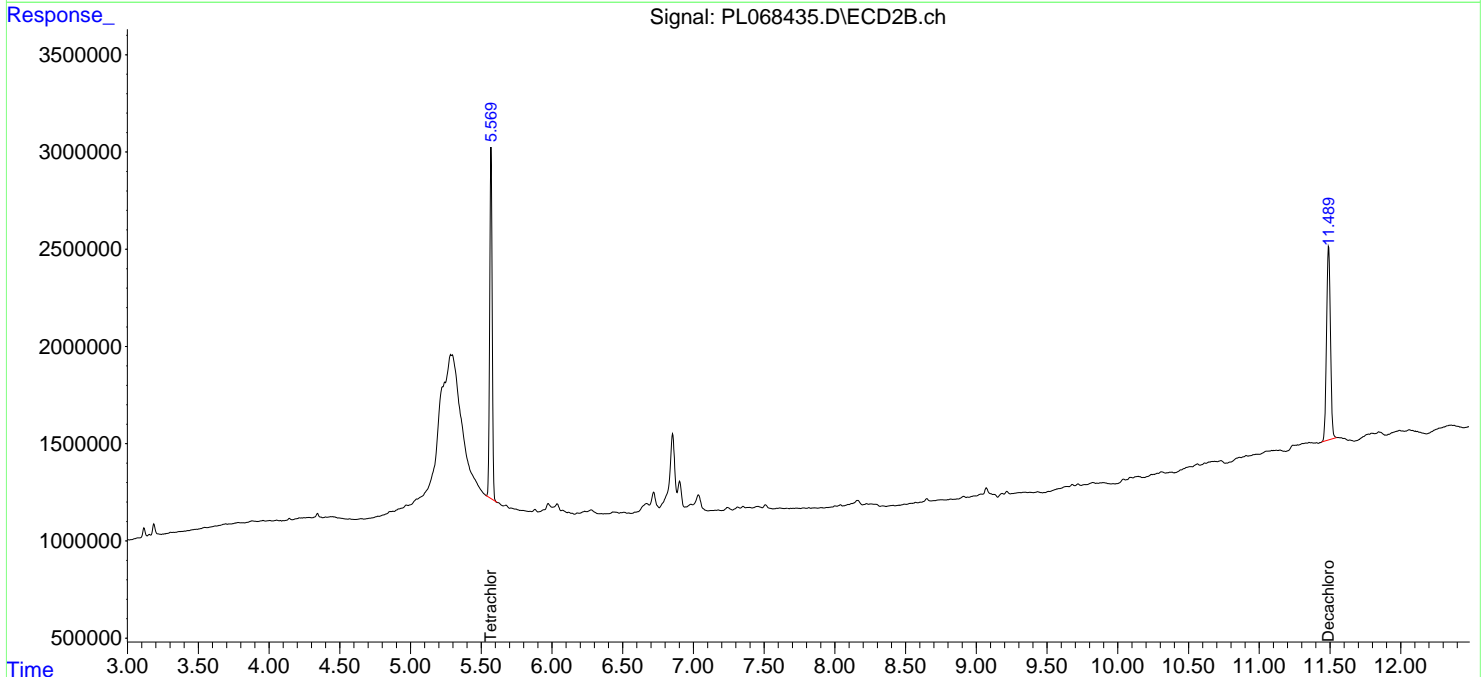
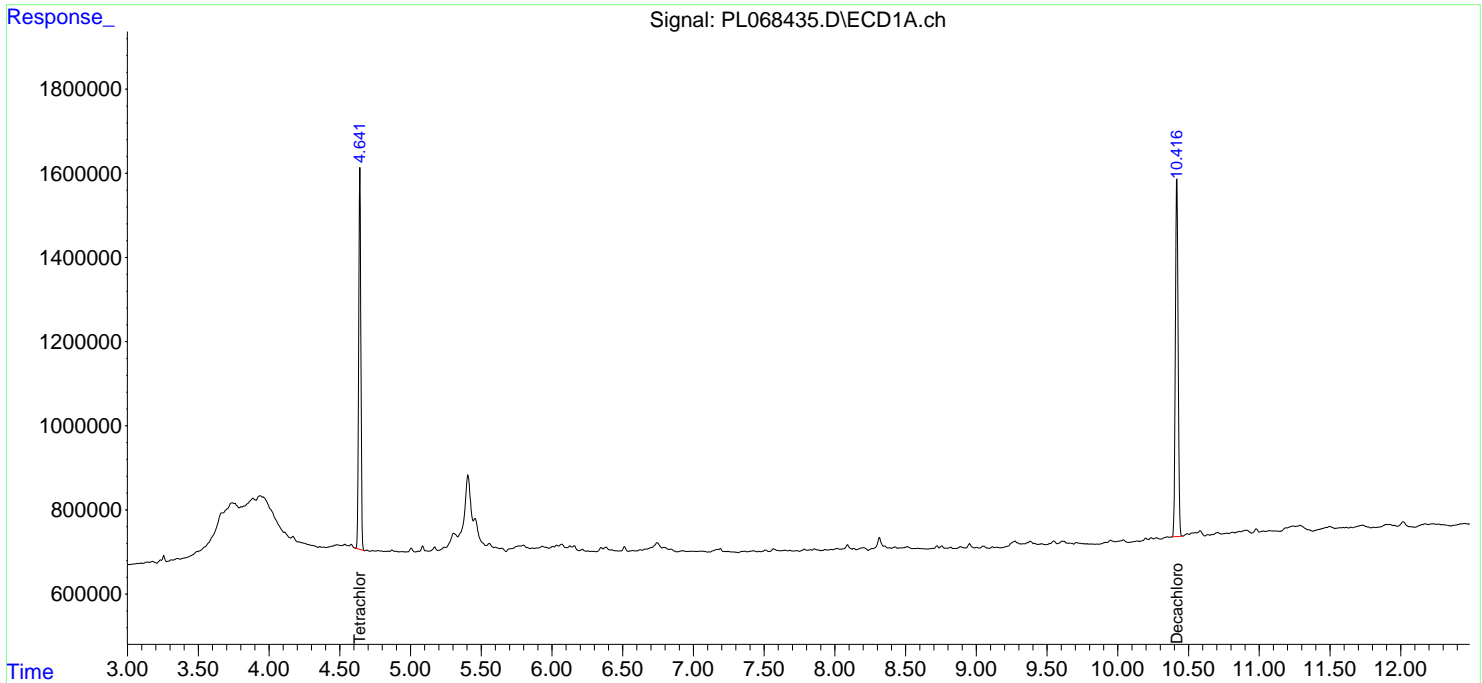
(f)=RT Delta > 1/2 Window (#)=Amounts differ by > 25% (m)=manual int.

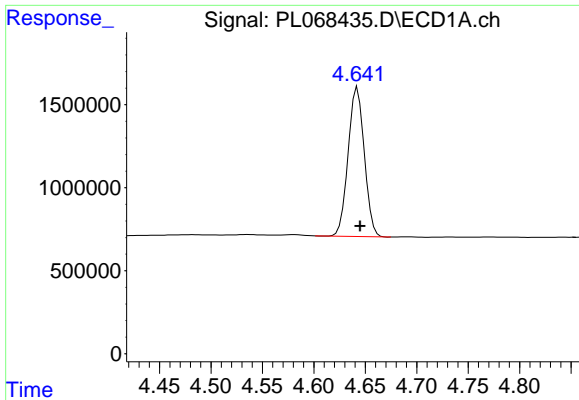
Data Path : Z:\pestpcbsrv\HPCHEM1\ECD\_L\Data\PL072321\  
 Data File : PL068435.D  
 Signal(s) : Signal #1: ECD1A.ch Signal #2: ECD2B.ch  
 Acq On : 23 Jul 2021 17:04  
 Operator : AR\AJ  
 Sample : M3150-01  
 Misc :  
 ALS Vial : 16 Sample Multiplier: 1

**Instrument :**  
 ECD\_L  
**ClientSampled :**  
 TP-B

Integration File signal 1: autoint1.e  
 Integration File signal 2: autoint2.e  
 Quant Time: Jul 26 04:55:55 2021  
 Quant Method : Z:\pestpcbsrv\HPCHEM1\ECD\_L\methods\PL071921.M  
 Quant Title : GC Extractables  
 QLast Update : Tue Jul 20 11:44:21 2021  
 Response via : Initial Calibration  
 Integrator: ChemStation

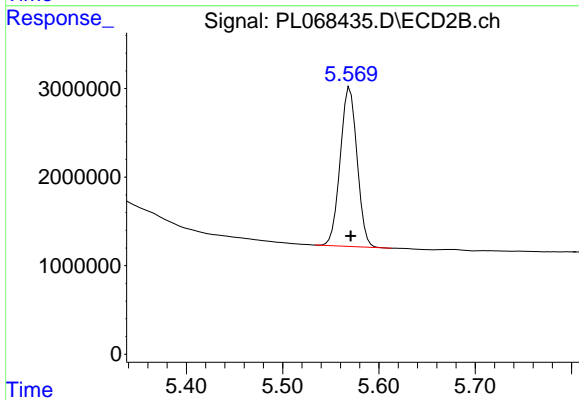
Volume Inj. : 1 µl  
 Signal #1 Phase : ZB-MR2 Signal #2 Phase: ZB-MR1  
 Signal #1 Info : 30M x 0.32mm x0.2 Signal #2 Info : 30M x 0.32mm x0.5µm



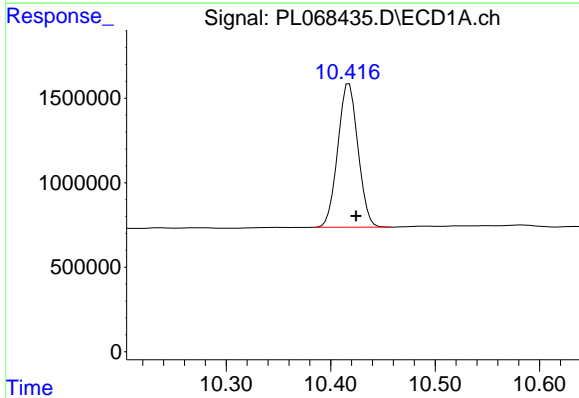


#1 Tetrachloro-m-xylene  
 R.T.: 4.642 min  
 Delta R.T.: -0.003 min  
 Response: 9834126  
 Conc: 22.91 ng/ml

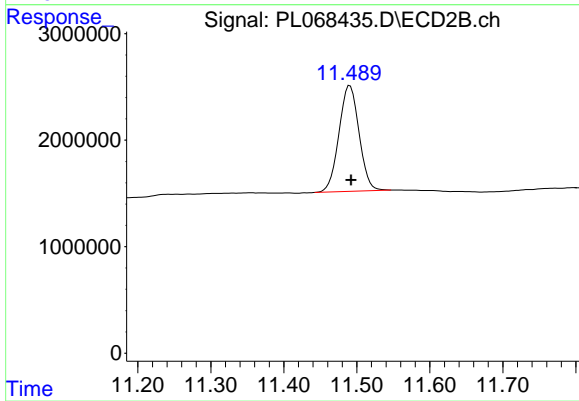
Instrument :  
 ECD\_L  
 ClientSampleId :  
 TP-B



#1 Tetrachloro-m-xylene  
 R.T.: 5.570 min  
 Delta R.T.: 0.000 min  
 Response: 21720796  
 Conc: 21.29 ng/ml



#28 Decachlorobiphenyl  
 R.T.: 10.418 min  
 Delta R.T.: -0.007 min  
 Response: 11410690  
 Conc: 20.29 ng/ml



#28 Decachlorobiphenyl  
 R.T.: 11.491 min  
 Delta R.T.: -0.002 min  
 Response: 19001701  
 Conc: 21.30 ng/ml