

Data Path : Z:\pestpcbsrv\HPCHEM1\ECD_L\Data\PL072321\
 Data File : PL068443.D
 Signal(s) : Signal #1: ECD1A.ch Signal #2: ECD2B.ch
 Acq On : 23 Jul 2021 19:17
 Operator : AR\AJ
 Sample : PSTDCCC050
 Misc :
 ALS Vial : 4 Sample Multiplier: 1

Instrument :
 ECD_L
 ClientSampleId :
 PSTDCCC050

Integration File signal 1: autoint1.e
 Integration File signal 2: autoint2.e
 Quant Time: Jul 26 04:57:44 2021
 Quant Method : Z:\pestpcbsrv\HPCHEM1\ECD_L\methods\PL071921.M
 Quant Title : GC Extractables
 QLast Update : Tue Jul 20 11:44:21 2021
 Response via : Initial Calibration
 Integrator: ChemStation

Volume Inj. : 1 µl
 Signal #1 Phase : ZB-MR2 Signal #2 Phase: ZB-MR1
 Signal #1 Info : 30M x 0.32mm x0.2 Signal #2 Info : 30M x 0.32mm x0.5µm

	Compound	RT#1	RT#2	Resp#1	Resp#2	ng/ml	ng/ml

System Monitoring Compounds							
1)	SA Tetrachlo...	4.642	5.569	24565489	56528209	57.238	55.397
28)	SA Decachlor...	10.417	11.489	28331234	46180828	50.374	51.773
Target Compounds							
2)	A alpha-BHC	5.349	6.149	33584303	77066716	57.371	56.682
3)	MA gamma-BHC...	5.772	6.545	33241151	72253862	58.478	56.002
4)	MA Heptachlor	6.184	7.195	35183107	69927109	57.723	53.653
5)	MB Aldrin	6.509	7.566	32956247	64335634	58.646	54.224
6)	B beta-BHC	6.151	6.797	16486452	34609786	56.341	48.990
7)	B delta-BHC	6.413	7.065	32832962	68912861	58.764	56.246
8)	B Heptachlo...	7.086	8.032	31856962	63106715	57.343	55.816
9)	A Endosulfan I	7.489	8.437	30123216	54911964	57.022	53.334
10)	B gamma-Chl...	7.364	8.301	32830711	60101366	57.219	53.366
11)	B alpha-Chl...	7.433	8.382	32788631	59697493	57.089	53.078
12)	B 4,4'-DDE	7.647	8.569	29352519	54477922	58.248	52.862
13)	MA Dieldrin	7.776	8.726	31126023	56626041	57.825	53.388
14)	MA Endrin	8.067	8.966	28970539	48125773	57.930	53.822
15)	B Endosulfa...	8.377	9.198	27229635	47050822	55.153	51.910
16)	A 4,4'-DDD	8.233	9.108	26212091	45447735	58.682	53.375
17)	MA 4,4'-DDT	8.494	9.425	27716831	48006281	55.258	50.863
18)	B Endrin al...	8.565	9.334	22334060	38103465	56.380	52.868
19)	B Endosulfa...	8.796	9.571	29015357	46440231	55.218	51.573
20)	A Methoxychlor	9.089	9.910	16772737	24191699	53.620	47.618
21)	B Endrin ke...	9.315	10.069	32340704	52045548	54.619	52.185
22)	Mirex	9.505	10.536	27076786	38884764	54.831	50.262

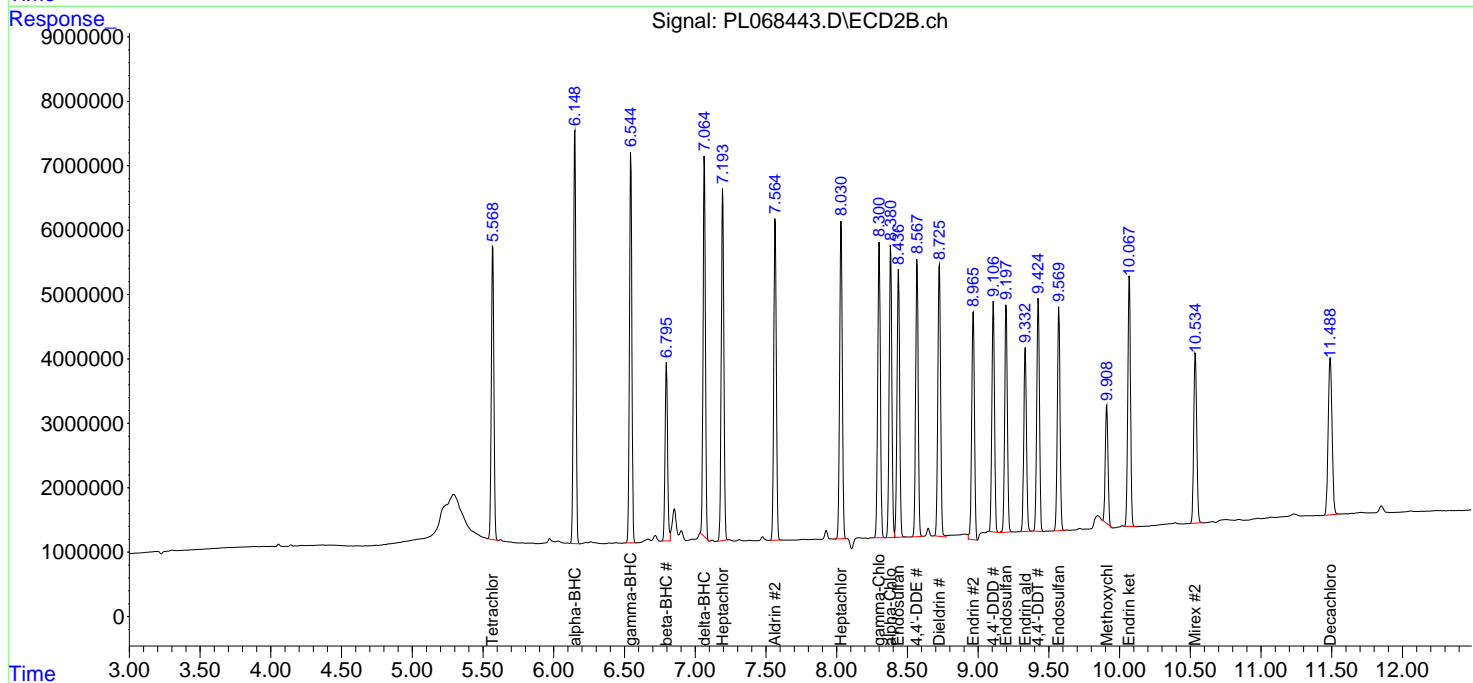
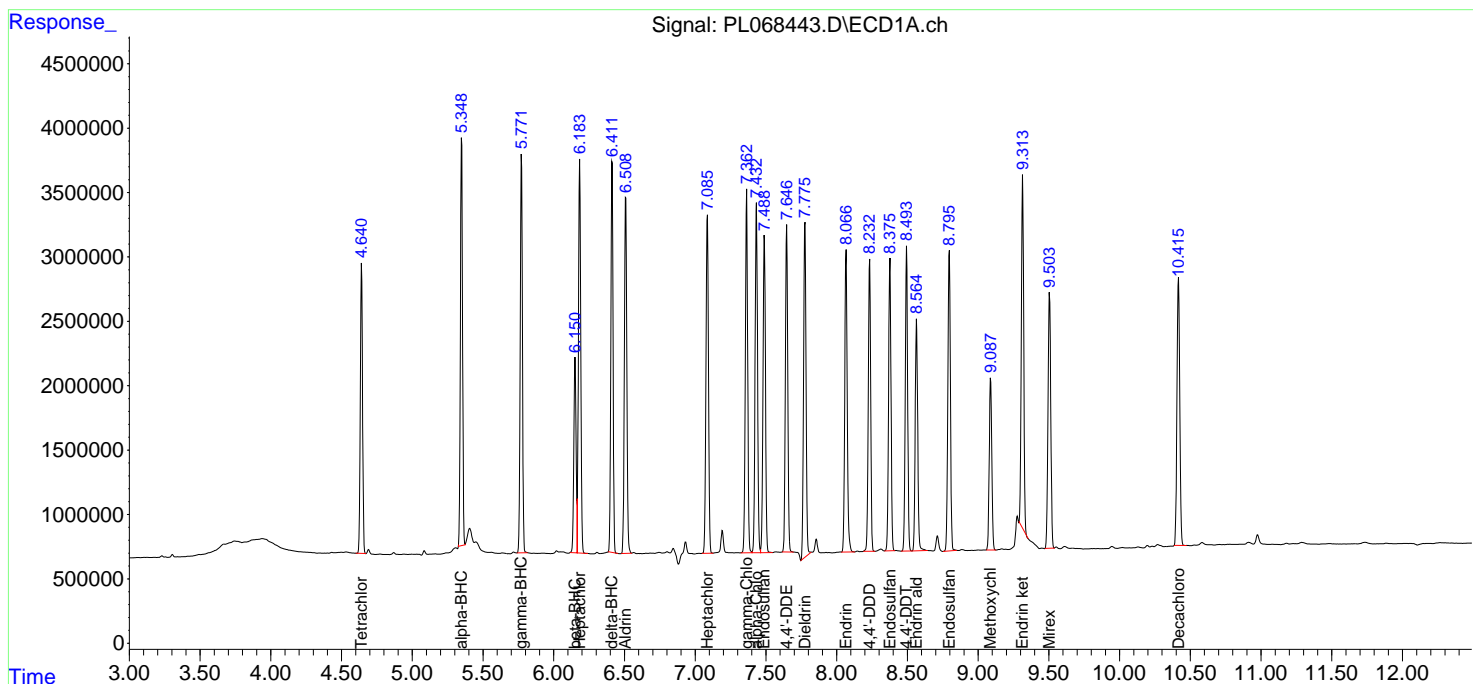
(f)=RT Delta > 1/2 Window (#)=Amounts differ by > 25% (m)=manual int.

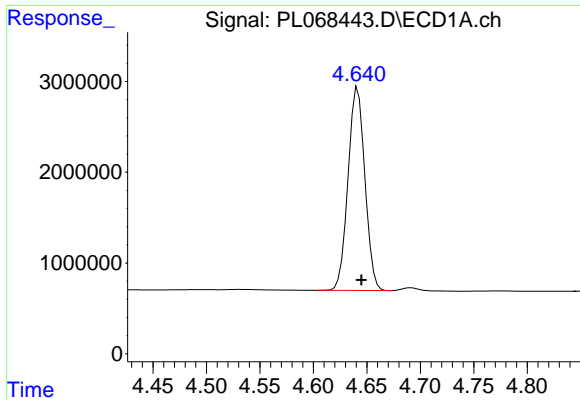
Data Path : Z:\pestpcbsrv\HPCHEM1\ECD_L\Data\PL072321\
 Data File : PL068443.D
 Signal(s) : Signal #1: ECD1A.ch Signal #2: ECD2B.ch
 Acq On : 23 Jul 2021 19:17
 Operator : AR\AJ
 Sample : PSTDCCC050
 Misc :
 ALS Vial : 4 Sample Multiplier: 1

Instrument :
 ECD_L
 ClientSampleId :
 PSTDCCC050

Integration File signal 1: autoint1.e
 Integration File signal 2: autoint2.e
 Quant Time: Jul 26 04:57:44 2021
 Quant Method : Z:\pestpcbsrv\HPCHEM1\ECD_L\methods\PL071921.M
 Quant Title : GC Extractables
 QLast Update : Tue Jul 20 11:44:21 2021
 Response via : Initial Calibration
 Integrator: ChemStation

Volume Inj. : 1 µl
 Signal #1 Phase : ZB-MR2 Signal #2 Phase: ZB-MR1
 Signal #1 Info : 30M x 0.32mm x0.2 Signal #2 Info : 30M x 0.32mm x0.5µm

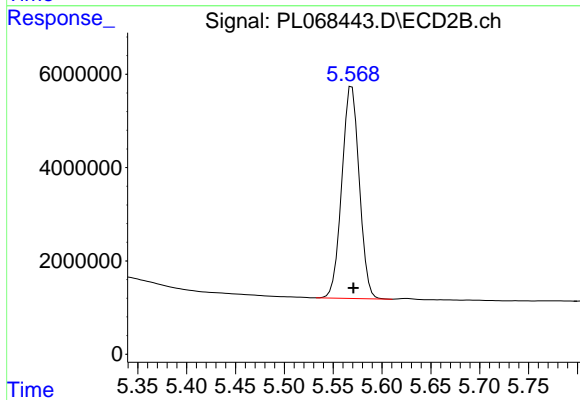




#1 Tetrachloro-m-xylene

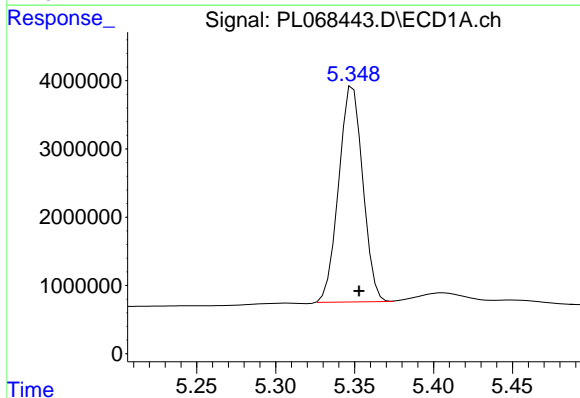
R.T.: 4.642 min
 Delta R.T.: -0.003 min
 Response: 24565489
 Conc: 57.24 ng/ml

Instrument :
 ECD_L
 ClientSampleId :
 PSTDCCC050



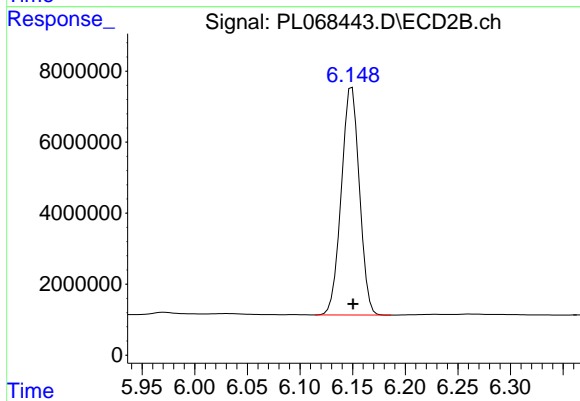
#1 Tetrachloro-m-xylene

R.T.: 5.569 min
 Delta R.T.: -0.002 min
 Response: 56528209
 Conc: 55.40 ng/ml



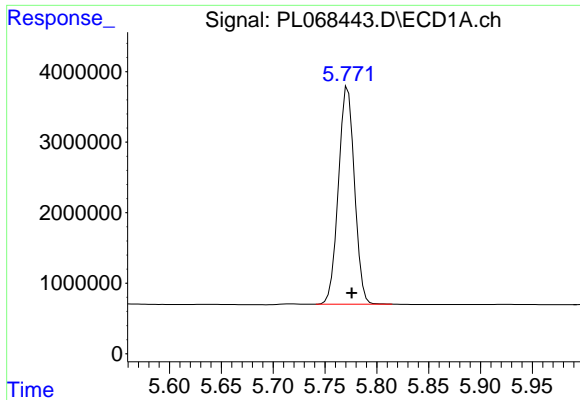
#2 alpha-BHC

R.T.: 5.349 min
 Delta R.T.: -0.004 min
 Response: 33584303
 Conc: 57.37 ng/ml



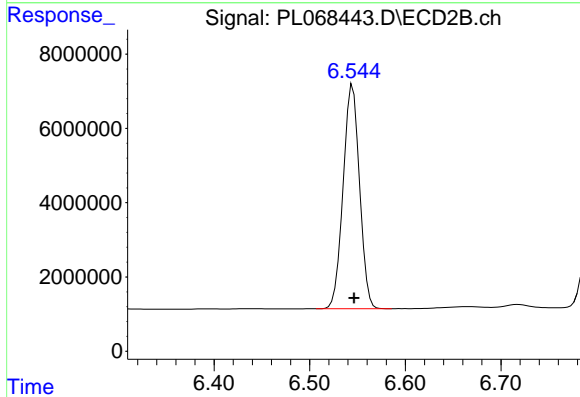
#2 alpha-BHC

R.T.: 6.149 min
 Delta R.T.: -0.001 min
 Response: 77066716
 Conc: 56.68 ng/ml

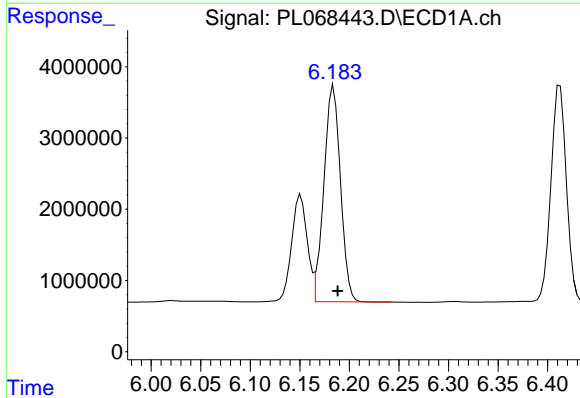


#3 gamma-BHC (Lindane)
 R.T.: 5.772 min
 Delta R.T.: -0.004 min
 Response: 33241151
 Conc: 58.48 ng/ml

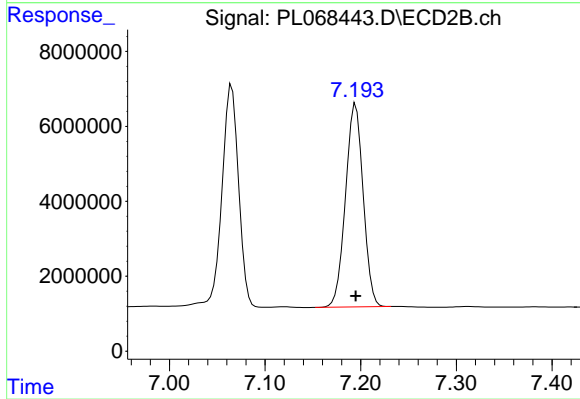
Instrument :
 ECD_L
 ClientSampleId :
 PSTDCCC050



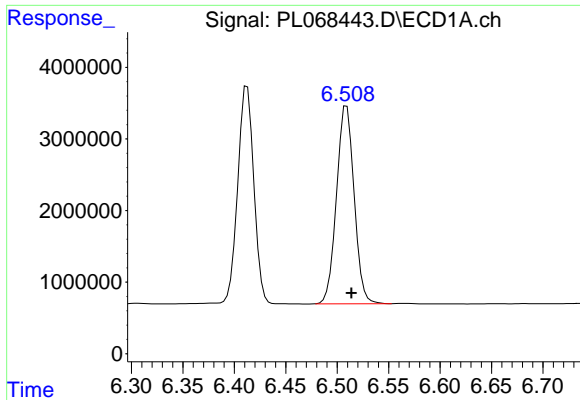
#3 gamma-BHC (Lindane)
 R.T.: 6.545 min
 Delta R.T.: -0.001 min
 Response: 72253862
 Conc: 56.00 ng/ml



#4 Heptachlor
 R.T.: 6.184 min
 Delta R.T.: -0.004 min
 Response: 35183107
 Conc: 57.72 ng/ml

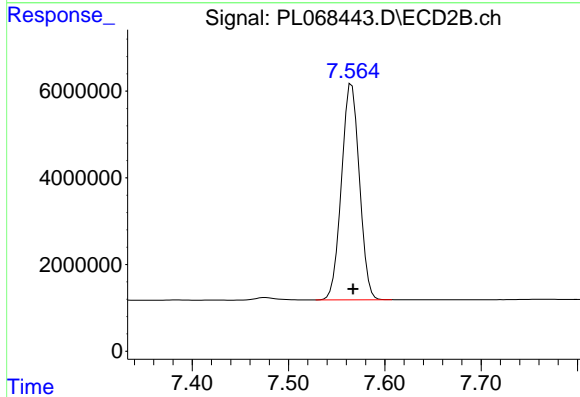


#4 Heptachlor
 R.T.: 7.195 min
 Delta R.T.: 0.000 min
 Response: 69927109
 Conc: 53.65 ng/ml

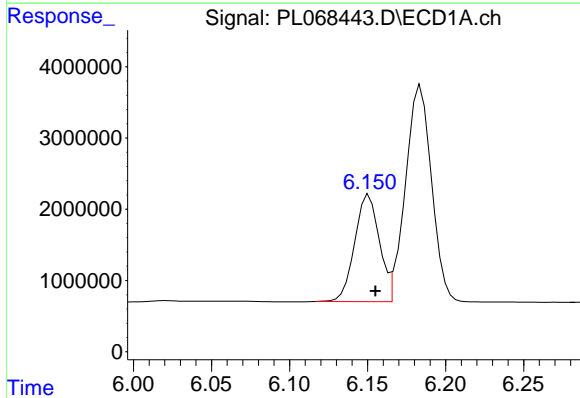


#5 Aldrin
 R.T.: 6.509 min
 Delta R.T.: -0.005 min
 Response: 32956247
 Conc: 58.65 ng/ml

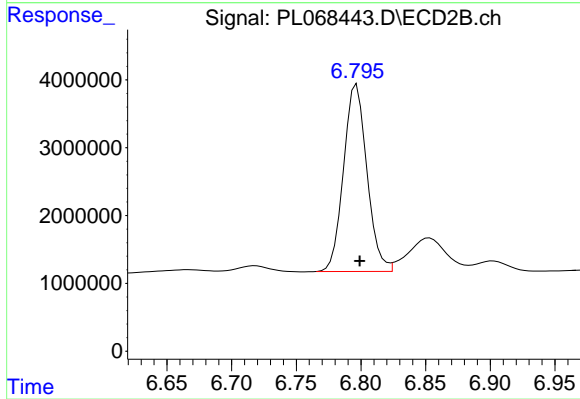
Instrument :
 ECD_L
 ClientSampleId :
 PSTDCCC050



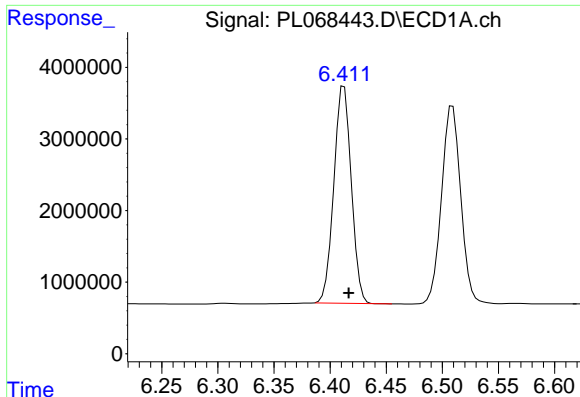
#5 Aldrin
 R.T.: 7.566 min
 Delta R.T.: -0.001 min
 Response: 64335634
 Conc: 54.22 ng/ml



#6 beta-BHC
 R.T.: 6.151 min
 Delta R.T.: -0.004 min
 Response: 16486452
 Conc: 56.34 ng/ml



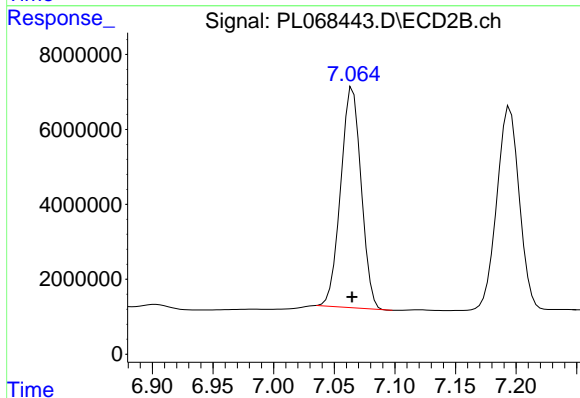
#6 beta-BHC
 R.T.: 6.797 min
 Delta R.T.: -0.002 min
 Response: 34609786
 Conc: 48.99 ng/ml



#7 delta-BHC

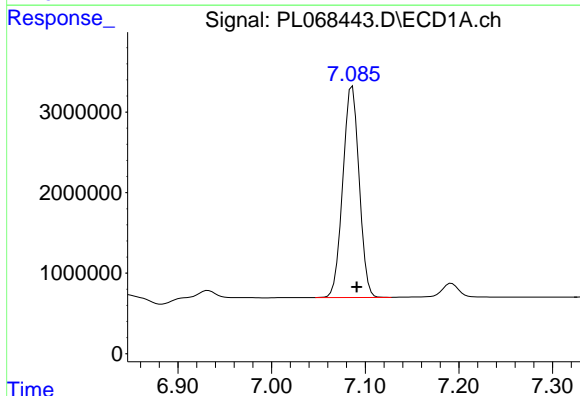
R.T.: 6.413 min
 Delta R.T.: -0.004 min
 Response: 32832962
 Conc: 58.76 ng/ml

Instrument :
 ECD_L
 ClientSampleId :
 PSTDCCC050



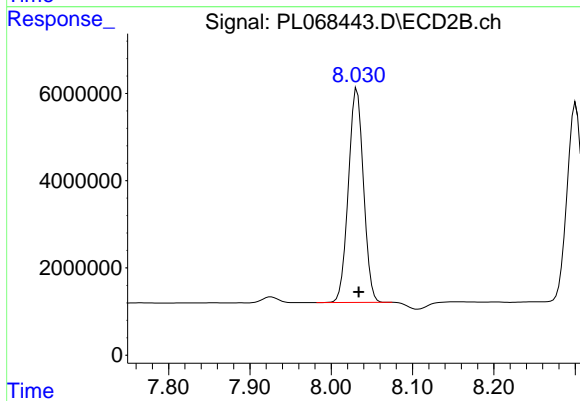
#7 delta-BHC

R.T.: 7.065 min
 Delta R.T.: 0.000 min
 Response: 68912861
 Conc: 56.25 ng/ml



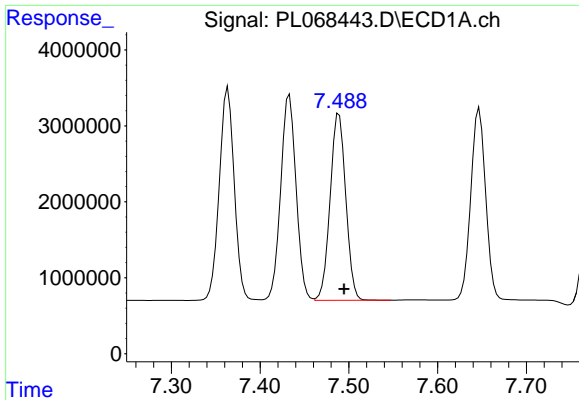
#8 Heptachlor epoxide

R.T.: 7.086 min
 Delta R.T.: -0.004 min
 Response: 31856962
 Conc: 57.34 ng/ml



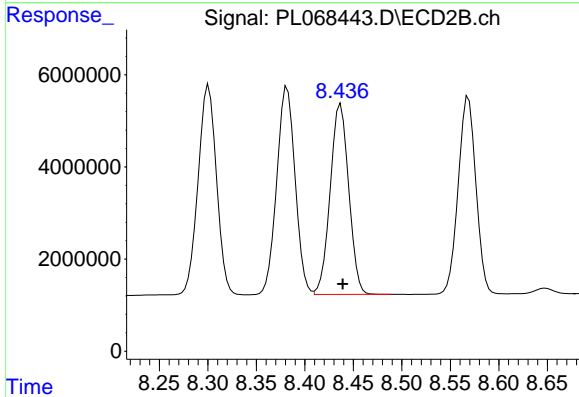
#8 Heptachlor epoxide

R.T.: 8.032 min
 Delta R.T.: -0.002 min
 Response: 63106715
 Conc: 55.82 ng/ml

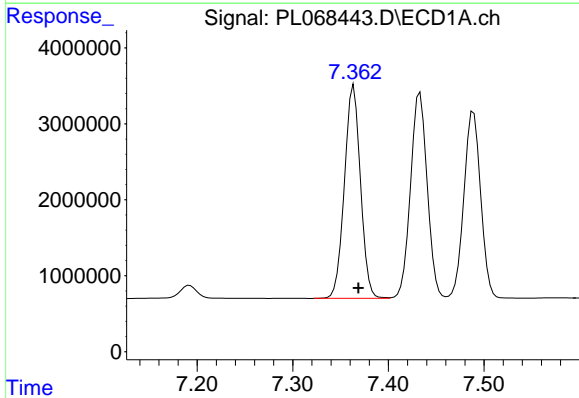


#9 Endosulfan I
 R.T.: 7.489 min
 Delta R.T.: -0.005 min
 Response: 30123216
 Conc: 57.02 ng/ml

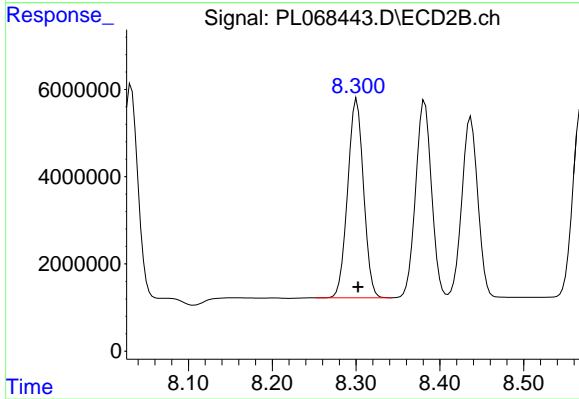
Instrument :
 ECD_L
 ClientSampleId :
 PSTDCCC050



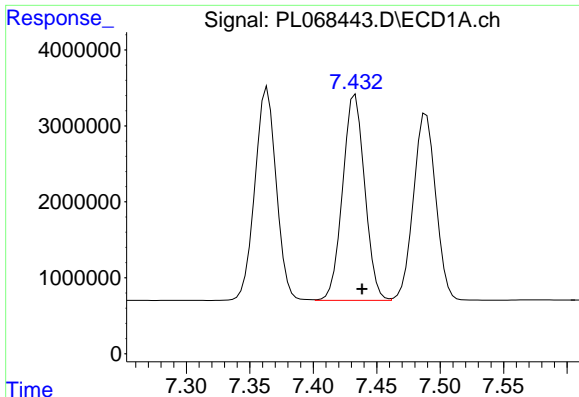
#9 Endosulfan I
 R.T.: 8.437 min
 Delta R.T.: -0.002 min
 Response: 54911964
 Conc: 53.33 ng/ml



#10 gamma-Chlordane
 R.T.: 7.364 min
 Delta R.T.: -0.005 min
 Response: 32830711
 Conc: 57.22 ng/ml



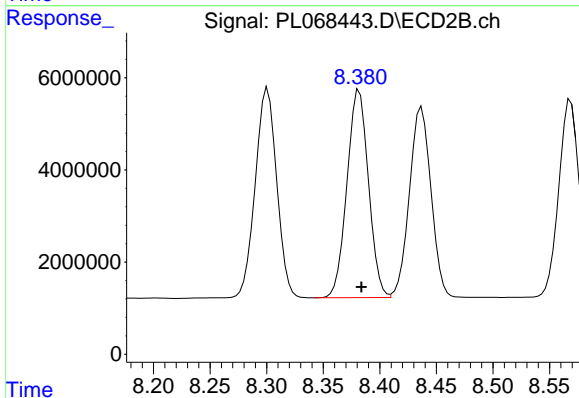
#10 gamma-Chlordane
 R.T.: 8.301 min
 Delta R.T.: -0.001 min
 Response: 60101366
 Conc: 53.37 ng/ml



#11 alpha-Chlordane

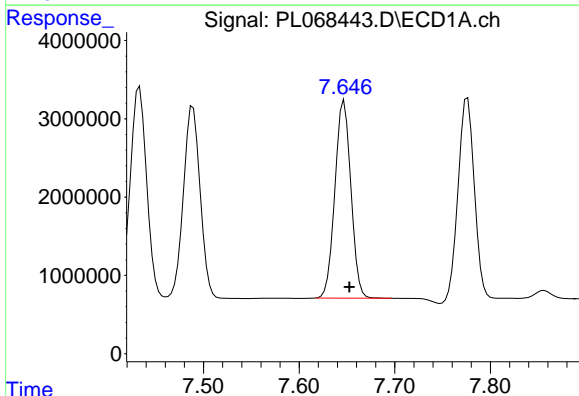
R.T.: 7.433 min
Delta R.T.: -0.005 min
Response: 32788631
Conc: 57.09 ng/ml

Instrument :
ECD_L
ClientSampleId :
PSTDCCC050



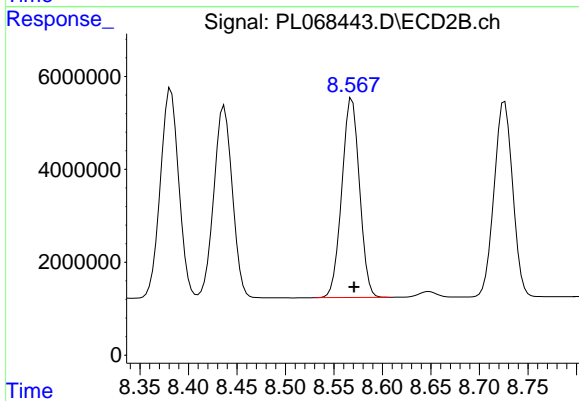
#11 alpha-Chlordane

R.T.: 8.382 min
Delta R.T.: -0.002 min
Response: 59697493
Conc: 53.08 ng/ml



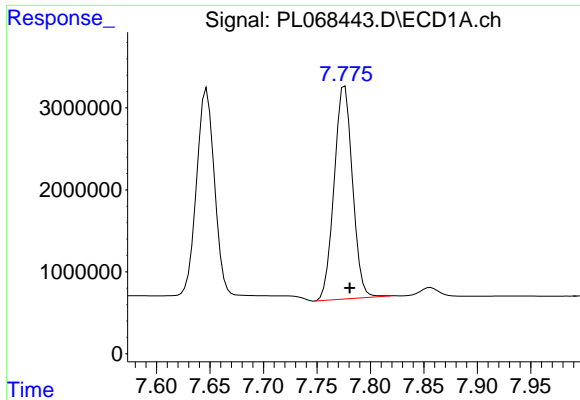
#12 4,4'-DDE

R.T.: 7.647 min
Delta R.T.: -0.005 min
Response: 29352519
Conc: 58.25 ng/ml



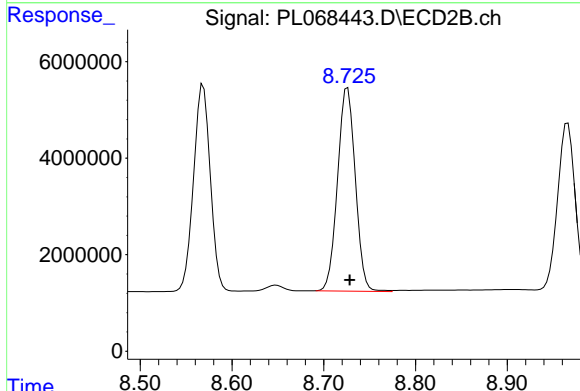
#12 4,4'-DDE

R.T.: 8.569 min
Delta R.T.: -0.002 min
Response: 54477922
Conc: 52.86 ng/ml

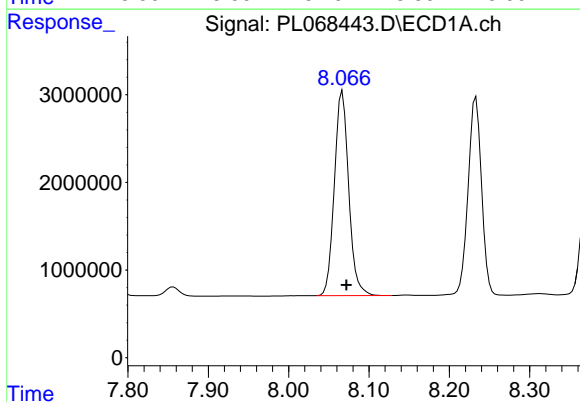


#13 Dieldrin
 R.T.: 7.776 min
 Delta R.T.: -0.005 min
 Response: 31126023
 Conc: 57.82 ng/ml

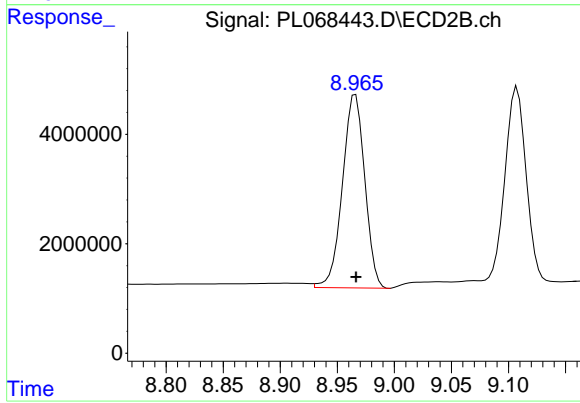
Instrument :
 ECD_L
 ClientSampleId :
 PSTDCCC050



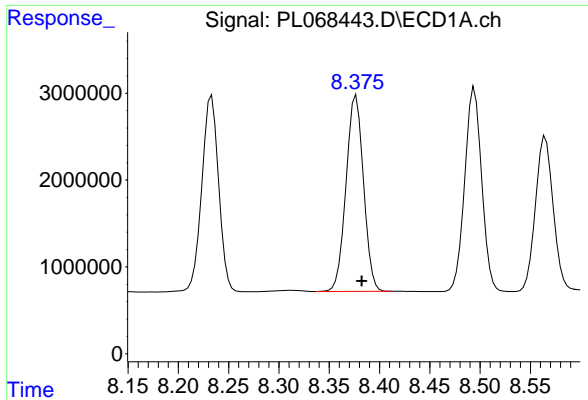
#13 Dieldrin
 R.T.: 8.726 min
 Delta R.T.: -0.002 min
 Response: 56626041
 Conc: 53.39 ng/ml



#14 Endrin
 R.T.: 8.067 min
 Delta R.T.: -0.005 min
 Response: 28970539
 Conc: 57.93 ng/ml

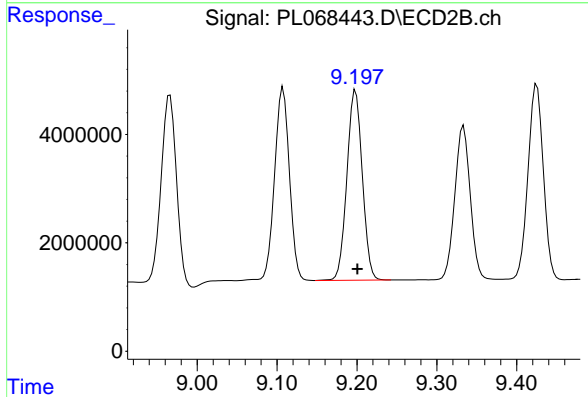


#14 Endrin
 R.T.: 8.966 min
 Delta R.T.: 0.000 min
 Response: 48125773
 Conc: 53.82 ng/ml

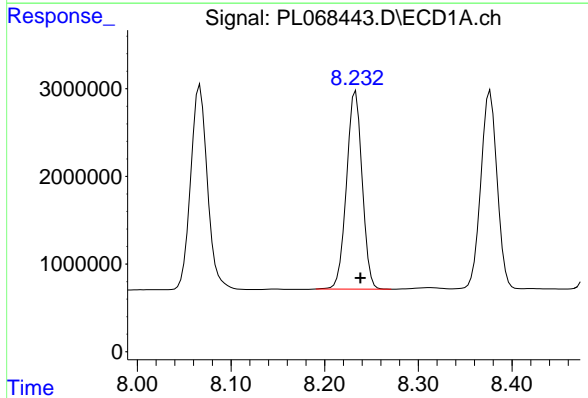


#15 Endosulfan II
R.T.: 8.377 min
Delta R.T.: -0.006 min
Response: 27229635
Conc: 55.15 ng/ml

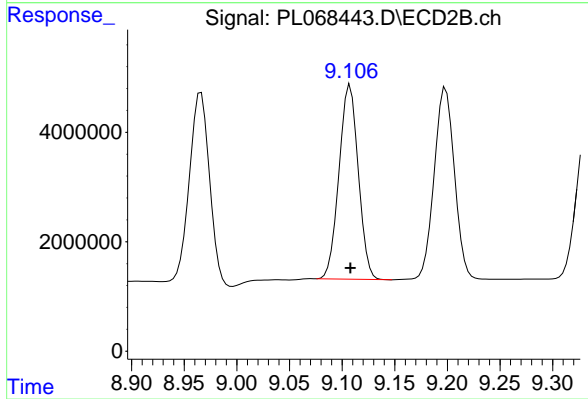
Instrument :
ECD_L
ClientSampleId :
PSTDCCC050



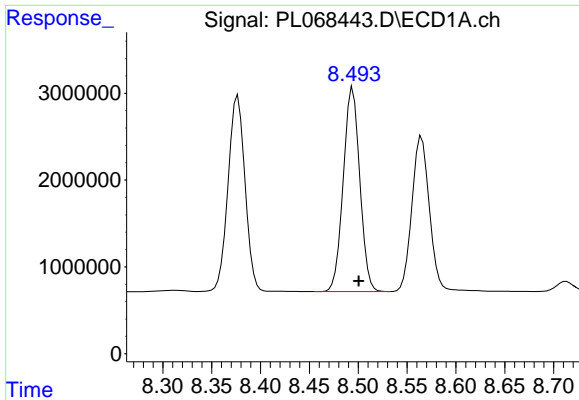
#15 Endosulfan II
R.T.: 9.198 min
Delta R.T.: -0.002 min
Response: 47050822
Conc: 51.91 ng/ml



#16 4,4'-DDD
R.T.: 8.233 min
Delta R.T.: -0.005 min
Response: 26212091
Conc: 58.68 ng/ml



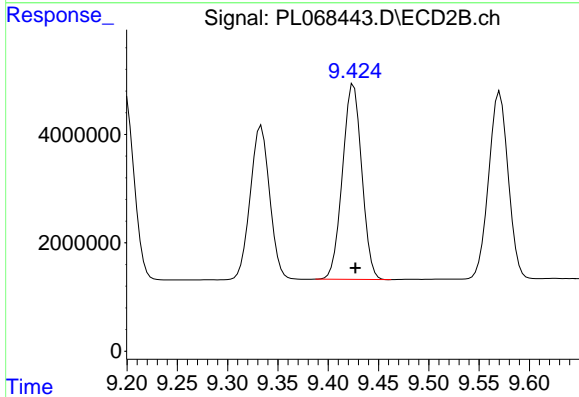
#16 4,4'-DDD
R.T.: 9.108 min
Delta R.T.: 0.000 min
Response: 45447735
Conc: 53.38 ng/ml



#17 4,4'-DDT

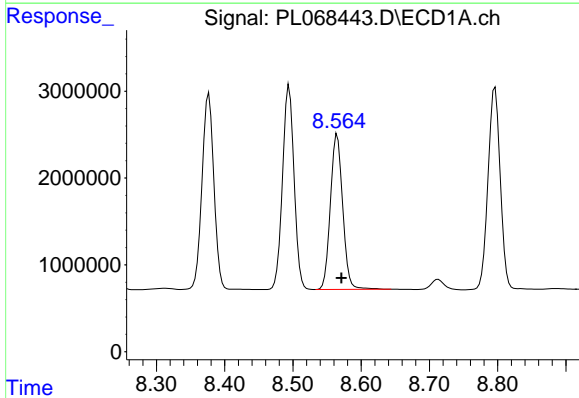
R.T.: 8.494 min
Delta R.T.: -0.006 min
Response: 27716831
Conc: 55.26 ng/ml

Instrument :
ECD_L
ClientSampleId :
PSTDCCC050



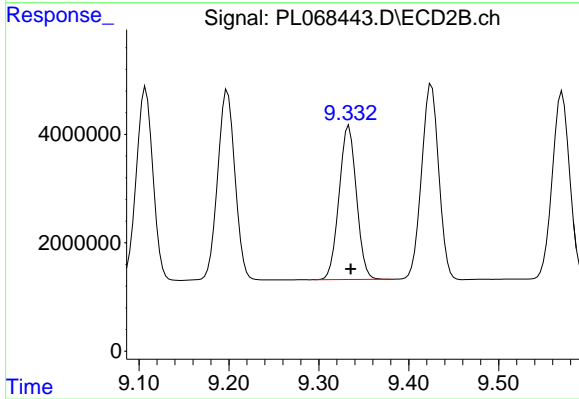
#17 4,4'-DDT

R.T.: 9.425 min
Delta R.T.: -0.002 min
Response: 48006281
Conc: 50.86 ng/ml



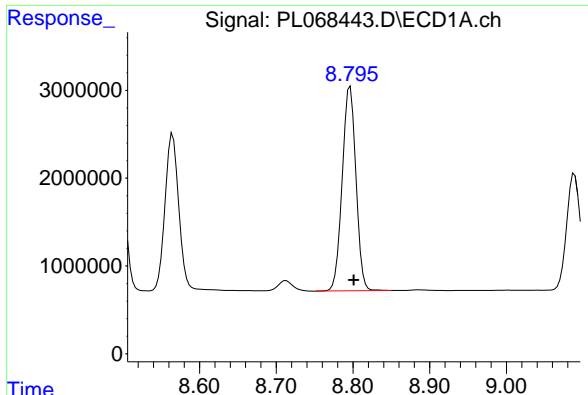
#18 Endrin aldehyde

R.T.: 8.565 min
Delta R.T.: -0.006 min
Response: 22334060
Conc: 56.38 ng/ml



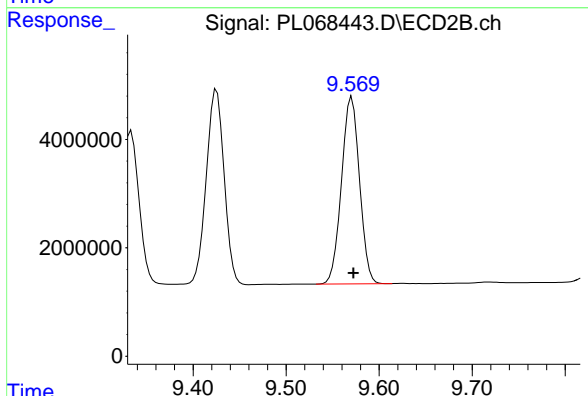
#18 Endrin aldehyde

R.T.: 9.334 min
Delta R.T.: -0.002 min
Response: 38103465
Conc: 52.87 ng/ml

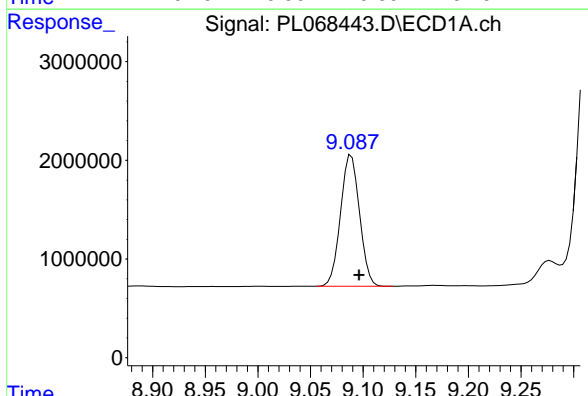


#19 Endosulfan Sulfate
 R.T.: 8.796 min
 Delta R.T.: -0.005 min
 Response: 29015357
 Conc: 55.22 ng/ml

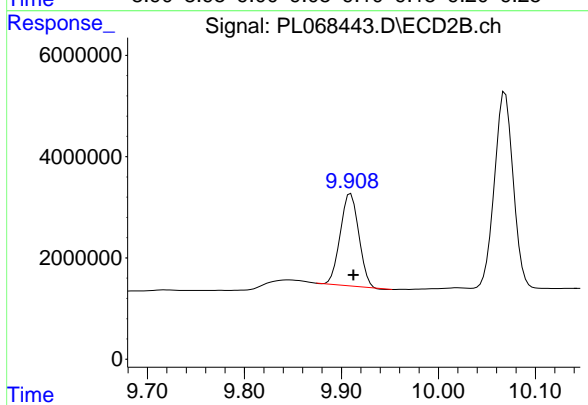
Instrument :
 ECD_L
 ClientSampleId :
 PSTDCCC050



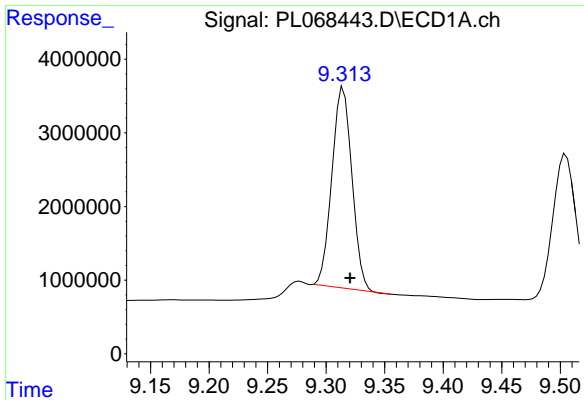
#19 Endosulfan Sulfate
 R.T.: 9.571 min
 Delta R.T.: -0.002 min
 Response: 46440231
 Conc: 51.57 ng/ml



#20 Methoxychlor
 R.T.: 9.089 min
 Delta R.T.: -0.008 min
 Response: 16772737
 Conc: 53.62 ng/ml



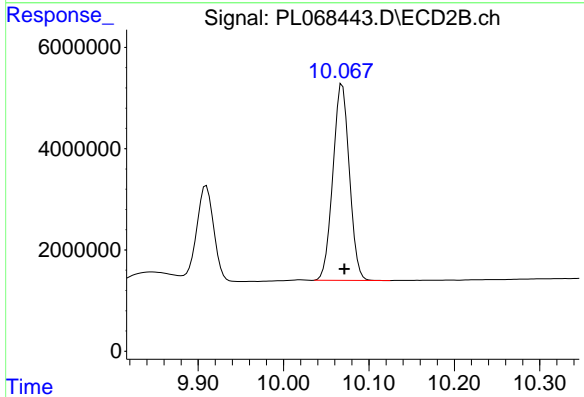
#20 Methoxychlor
 R.T.: 9.910 min
 Delta R.T.: -0.003 min
 Response: 24191699
 Conc: 47.62 ng/ml



#21 Endrin ketone

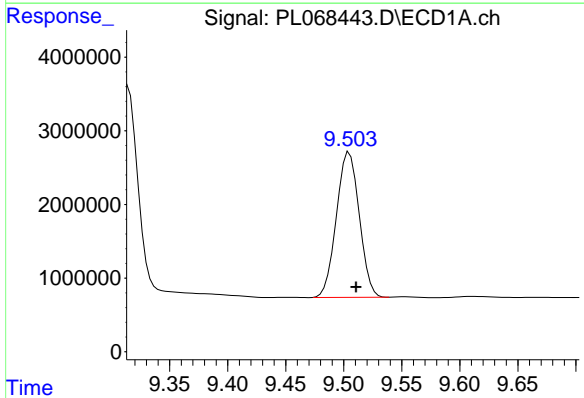
R.T.: 9.315 min
 Delta R.T.: -0.006 min
 Response: 32340704
 Conc: 54.62 ng/ml

Instrument :
 ECD_L
 ClientSampleId :
 PSTDCCC050



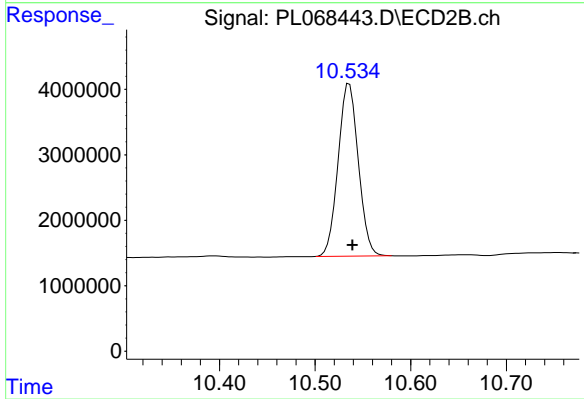
#21 Endrin ketone

R.T.: 10.069 min
 Delta R.T.: -0.002 min
 Response: 52045548
 Conc: 52.18 ng/ml



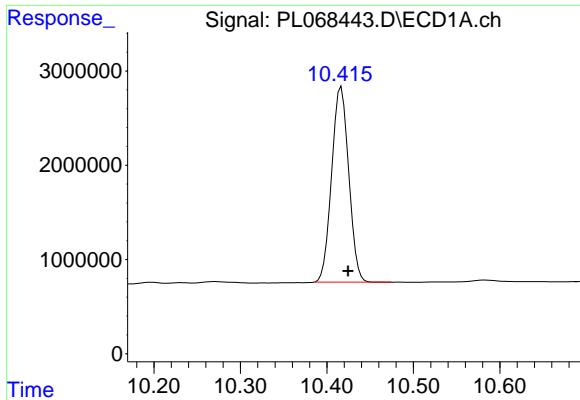
#22 Mirex

R.T.: 9.505 min
 Delta R.T.: -0.006 min
 Response: 27076786
 Conc: 54.83 ng/ml



#22 Mirex

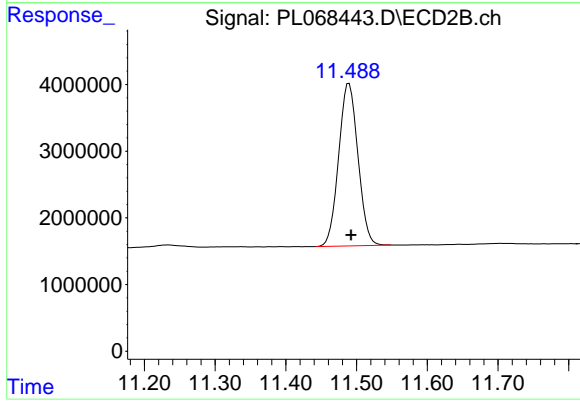
R.T.: 10.536 min
 Delta R.T.: -0.004 min
 Response: 38884764
 Conc: 50.26 ng/ml



#28 Decachlorobiphenyl

R.T.: 10.417 min
Delta R.T.: -0.008 min
Response: 28331234
Conc: 50.37 ng/ml

Instrument :
ECD_L
ClientSampled :
PSTDCCC050



#28 Decachlorobiphenyl

R.T.: 11.489 min
Delta R.T.: -0.003 min
Response: 46180828
Conc: 51.77 ng/ml