

Data Path : Z:\pestpcbsrv\HPCHEM1\ECD\_L\Data\PL072519\  
 Data File : PL050781.D  
 Signal(s) : Signal #1: ECD1A.ch Signal #2: ECD2B.ch  
 Acq On : 25 Jul 2019 17:35  
 Operator : SM\AJ  
 Sample : K3990-03  
 Misc :  
 ALS Vial : 18 Sample Multiplier: 1

Instrument :  
 ECD\_L  
 ClientSampleId :  
 TP-2-A

Integration File signal 1: autoint1.e  
 Integration File signal 2: autoint2.e  
 Quant Time: Jul 26 00:52:30 2019  
 Quant Method : Z:\pestpcbsrv\HPCHEM1\ECD\_L\methods\PL071719.M  
 Quant Title : GC Extractables  
 QLast Update : Fri Jul 19 01:19:13 2019  
 Response via : Initial Calibration  
 Integrator: ChemStation

Volume Inj. : 1 µl  
 Signal #1 Phase : ZB-MR2 Signal #2 Phase: ZB-MR1  
 Signal #1 Info : 30M x 0.32mm x0.2 Signal #2 Info : 30M x 0.32mm x0.5µm

Compound	RT#1	RT#2	Resp#1	Resp#2	ng/ml	ng/ml
-----						
System Monitoring Compounds						
1) SA Tetrachlo...	3.319	3.929	195.3E6	50812045	19.434	17.809
28) SA Decachlor...	7.979	8.960	127.0E6	33459742	12.543	11.832
Target Compounds						
6) B beta-BHC	0.000	4.803f	0	3750313	N.D.	2.169 #
7) B delta-BHC	0.000	4.983	0	8685571	N.D.	2.246 #
8) B Heptachlo...	0.000	5.806	0	14413425	N.D.	3.768 #
9) A Endosulfan I	5.340f	0.000	18345865	0	1.261	N.D. #
10) B gamma-Chl...	5.221f	6.017	28607057	6656394	1.812	1.801
11) B alpha-Chl...	5.276f	0.000	28628161	0	1.877	N.D. #
12) B 4,4'-DDE	5.424	6.257	1482.8E6	360.7E6	98.948	100.101
13) MA Dieldrin	5.548	6.402	767.1E6	157.5E6	49.499	44.469
14) MA Endrin	5.804	6.650f	126.8E6	5681395	8.612	1.832 #
15) B Endosulfa...	6.088	6.847	16814358	8085448	1.201	2.543 #
16) A 4,4'-DDD	5.938	6.746	12011906	9976840	1.002	3.747 #
17) MA 4,4'-DDT	6.169	7.044	568.1E6	137.8E6	45.871	51.035
18) B Endrin al...	6.226f	0.000	28136016	0	2.439	N.D. #
21) B Endrin ke...	6.927	0.000	11374167	0	0.832	N.D. #
25) Chlordane-3	5.221f	6.017	28607057	6656394	20.437	13.839 #
26) Chlordane-4	5.276f	0.000	28628161	0	21.705	N.D. #
27) Chlordane-5	6.088	0.000	16814358	0	33.103	N.D. #

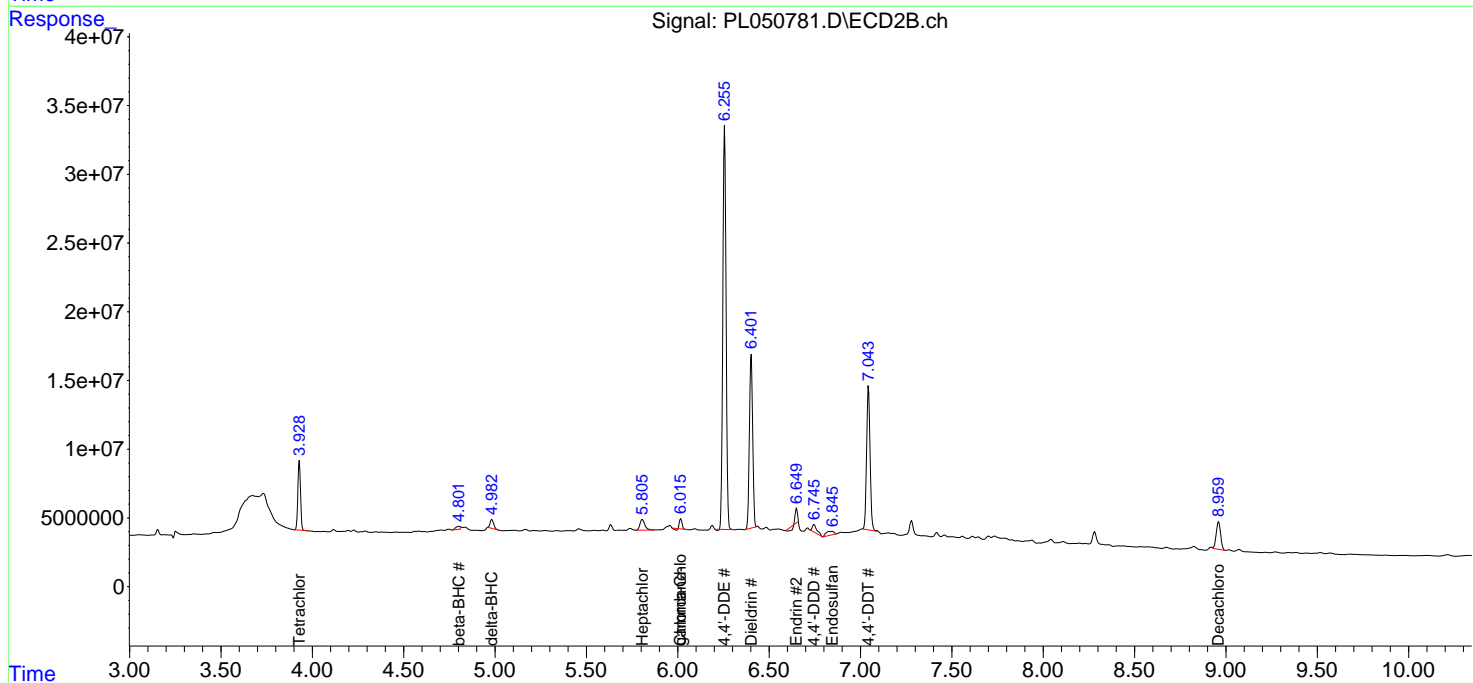
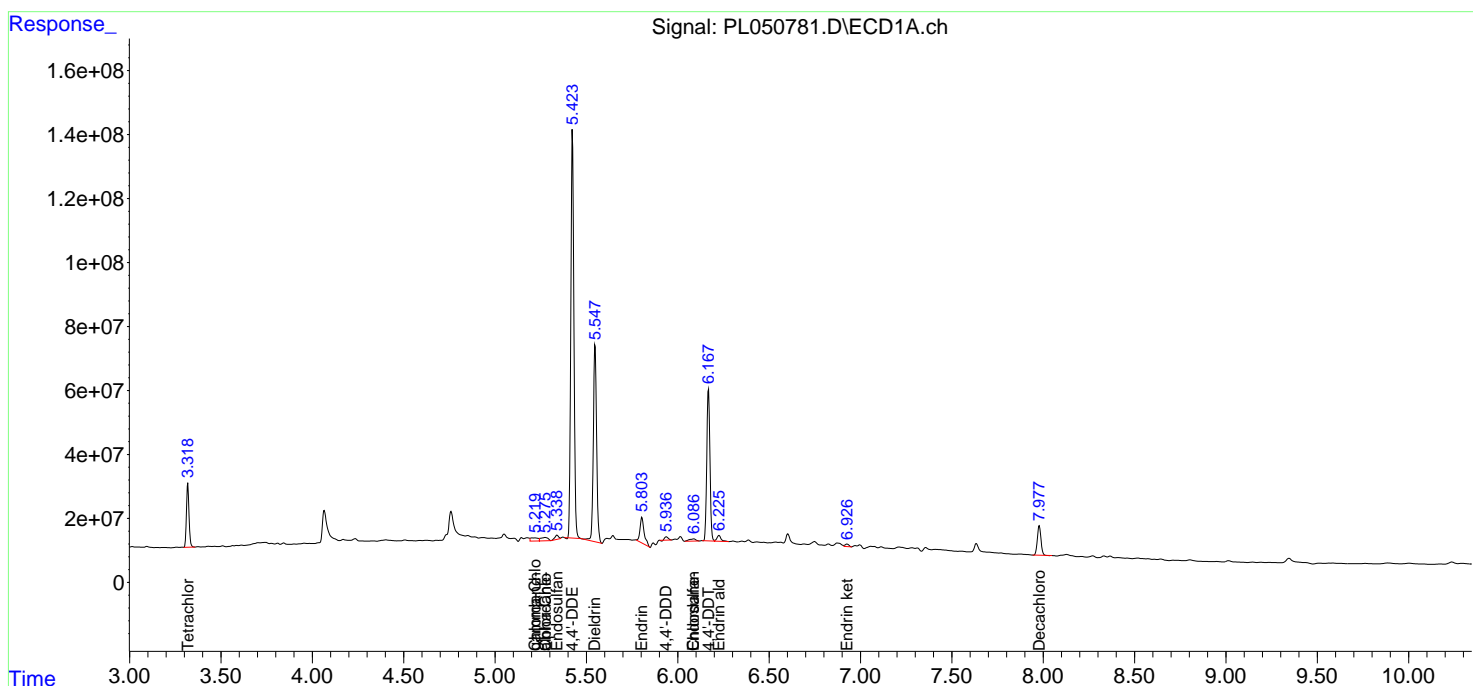
(f)=RT Delta > 1/2 Window (#)=Amounts differ by > 25% (m)=manual int.

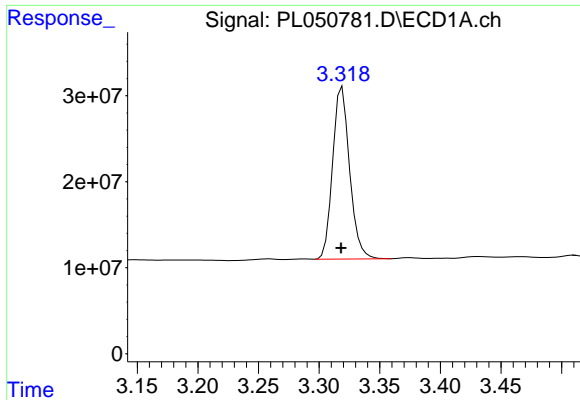
Data Path : Z:\pestpcbsrv\HPCHEM1\ECD\_L\Data\PL072519\  
 Data File : PL050781.D  
 Signal(s) : Signal #1: ECD1A.ch Signal #2: ECD2B.ch  
 Acq On : 25 Jul 2019 17:35  
 Operator : SM\AJ  
 Sample : K3990-03  
 Misc :  
 ALS Vial : 18 Sample Multiplier: 1

Instrument :  
 ECD\_L  
 ClientSampled :  
 TP-2-A

Integration File signal 1: autoint1.e  
 Integration File signal 2: autoint2.e  
 Quant Time: Jul 26 00:52:30 2019  
 Quant Method : Z:\pestpcbsrv\HPCHEM1\ECD\_L\methods\PL071719.M  
 Quant Title : GC Extractables  
 QLast Update : Fri Jul 19 01:19:13 2019  
 Response via : Initial Calibration  
 Integrator: ChemStation

Volume Inj. : 1 µl  
 Signal #1 Phase : ZB-MR2 Signal #2 Phase: ZB-MR1  
 Signal #1 Info : 30M x 0.32mm x0.2 Signal #2 Info : 30M x 0.32mm x0.5µm

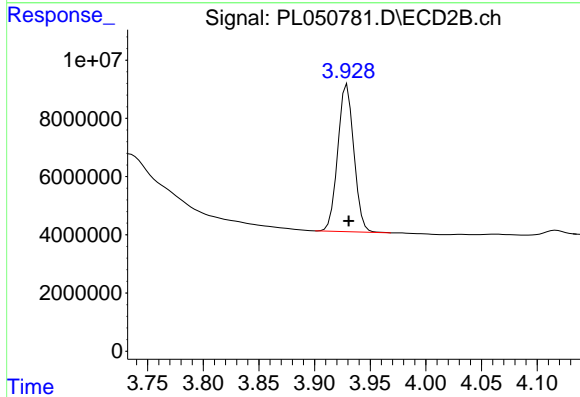




#1 Tetrachloro-m-xylene

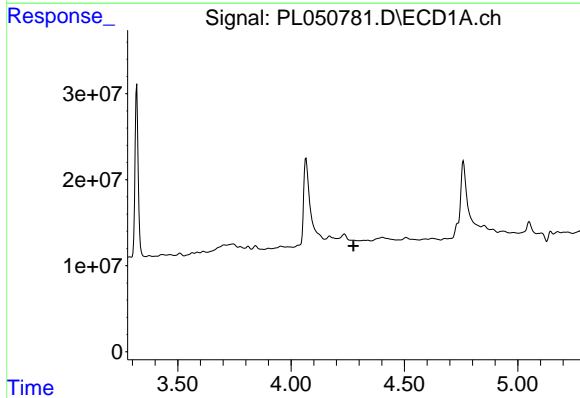
R.T.: 3.319 min  
 Delta R.T.: 0.001 min  
 Response: 195268213  
 Conc: 19.43 ng/ml

Instrument :  
 ECD\_L  
 ClientSampled :  
 TP-2-A



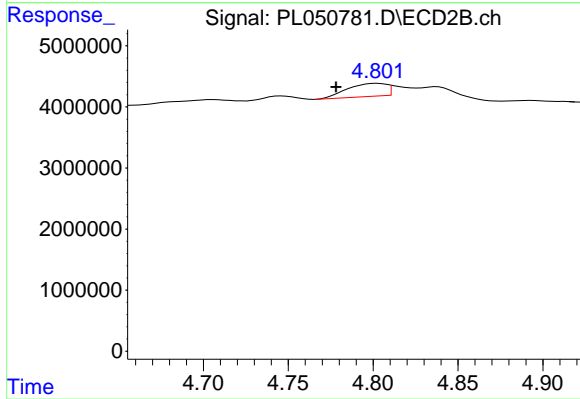
#1 Tetrachloro-m-xylene

R.T.: 3.929 min  
 Delta R.T.: -0.001 min  
 Response: 50812045  
 Conc: 17.81 ng/ml



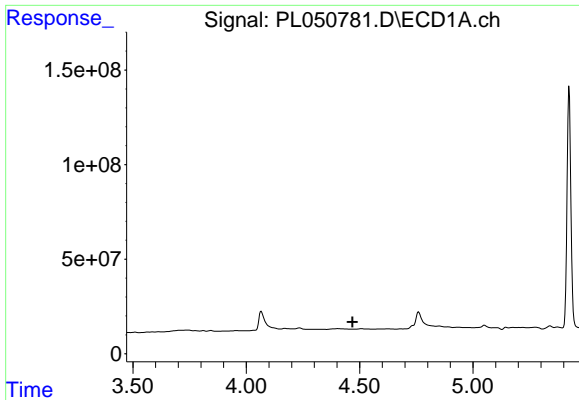
#6 beta-BHC

R.T.: 0.000 min  
 Exp R.T. : 4.276 min  
 Response: 0  
 Conc: N.D.



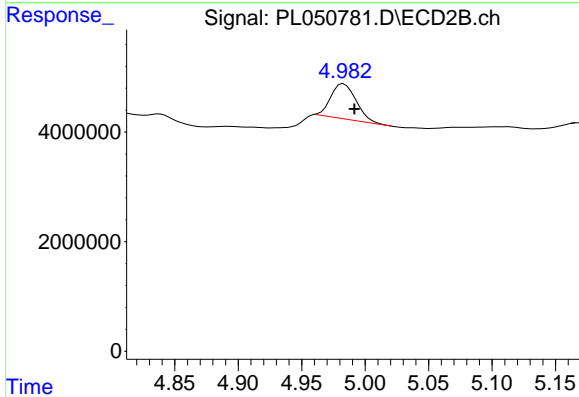
#6 beta-BHC

R.T.: 4.803 min  
 Delta R.T.: 0.024 min  
 Response: 3750313  
 Conc: 2.17 ng/ml

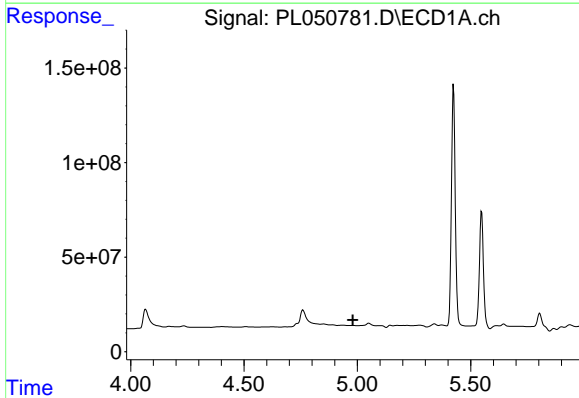


#7 delta-BHC  
 R.T.: 0.000 min  
 Exp R.T. : 4.469 min  
 Response: 0  
 Conc: N.D.

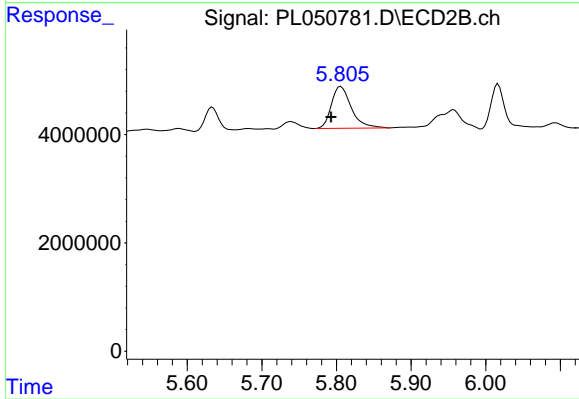
Instrument :  
 ECD\_L  
 ClientSampled :  
 TP-2-A



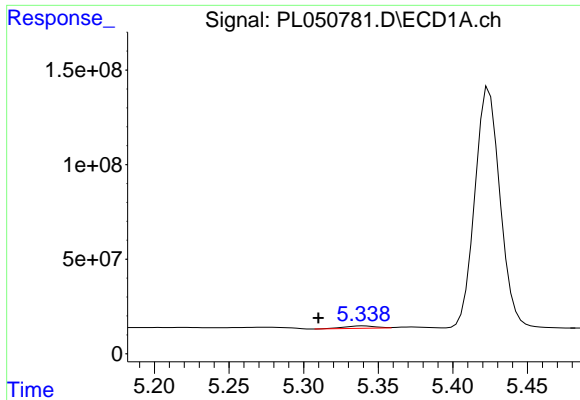
#7 delta-BHC  
 R.T.: 4.983 min  
 Delta R.T.: -0.008 min  
 Response: 8685571  
 Conc: 2.25 ng/ml



#8 Heptachlor epoxide  
 R.T.: 0.000 min  
 Exp R.T. : 4.979 min  
 Response: 0  
 Conc: N.D.

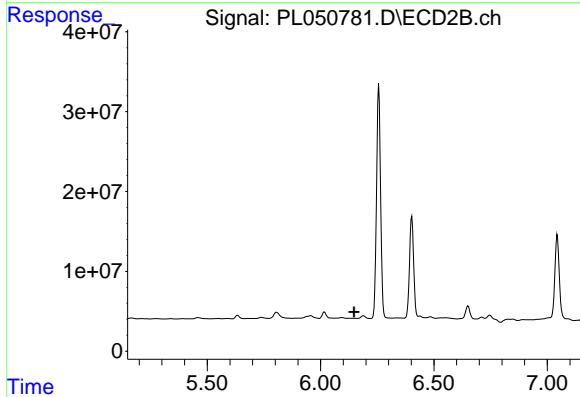


#8 Heptachlor epoxide  
 R.T.: 5.806 min  
 Delta R.T.: 0.013 min  
 Response: 14413425  
 Conc: 3.77 ng/ml

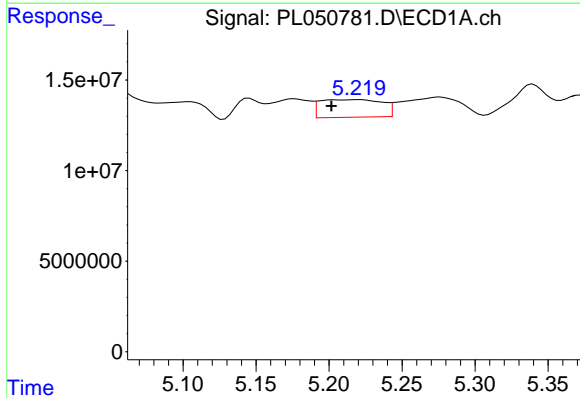


#9 Endosulfan I  
 R.T.: 5.340 min  
 Delta R.T.: 0.030 min  
 Response: 18345865  
 Conc: 1.26 ng/ml

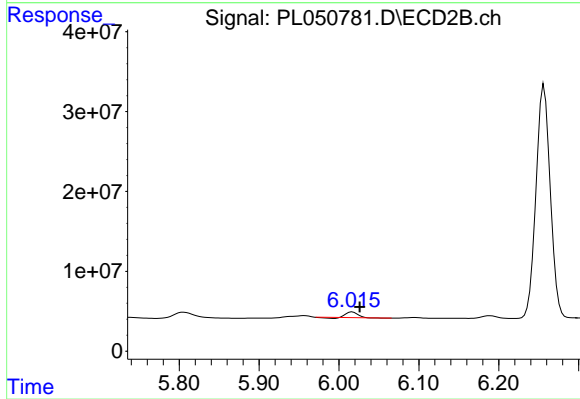
Instrument :  
 ECD\_L  
 ClientSampled :  
 TP-2-A



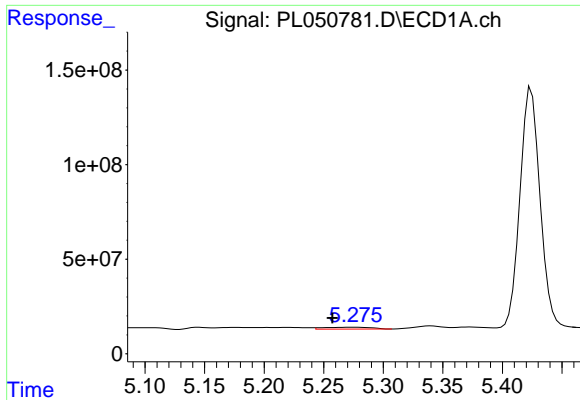
#9 Endosulfan I  
 R.T.: 0.000 min  
 Exp R.T. : 6.148 min  
 Response: 0  
 Conc: N.D.



#10 gamma-Chlordane  
 R.T.: 5.221 min  
 Delta R.T.: 0.019 min  
 Response: 28607057  
 Conc: 1.81 ng/ml

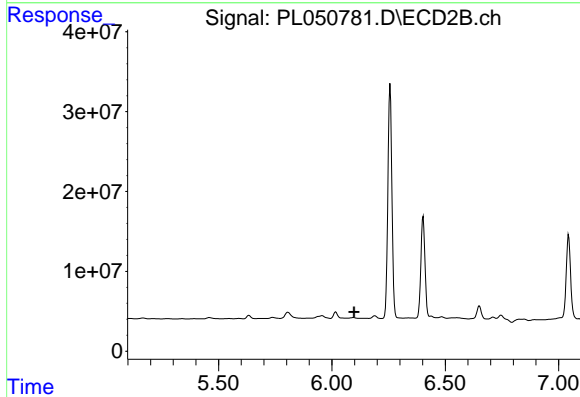


#10 gamma-Chlordane  
 R.T.: 6.017 min  
 Delta R.T.: -0.009 min  
 Response: 6656394  
 Conc: 1.80 ng/ml

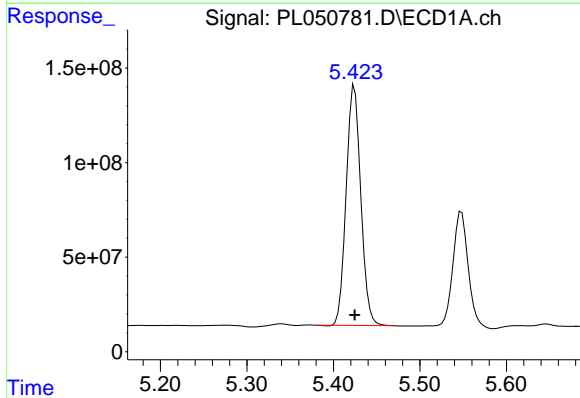


#11 alpha-Chlordane  
 R.T.: 5.276 min  
 Delta R.T.: 0.019 min  
 Response: 28628161  
 Conc: 1.88 ng/ml

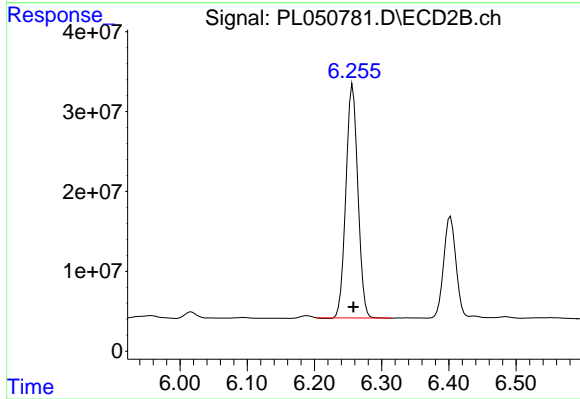
Instrument :  
 ECD\_L  
 ClientSampled :  
 TP-2-A



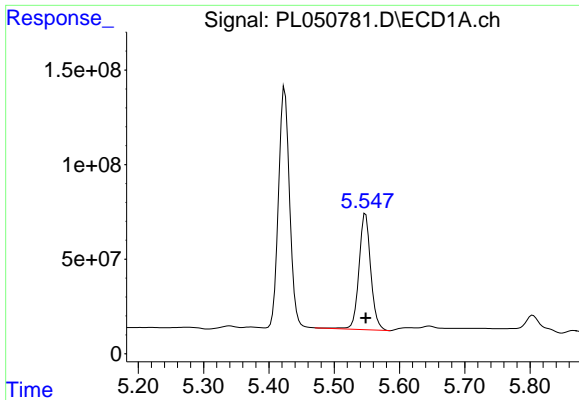
#11 alpha-Chlordane  
 R.T.: 0.000 min  
 Exp R.T. : 6.098 min  
 Response: 0  
 Conc: N.D.



#12 4,4'-DDE  
 R.T.: 5.424 min  
 Delta R.T.: 0.000 min  
 Response: 1482824615  
 Conc: 98.95 ng/ml

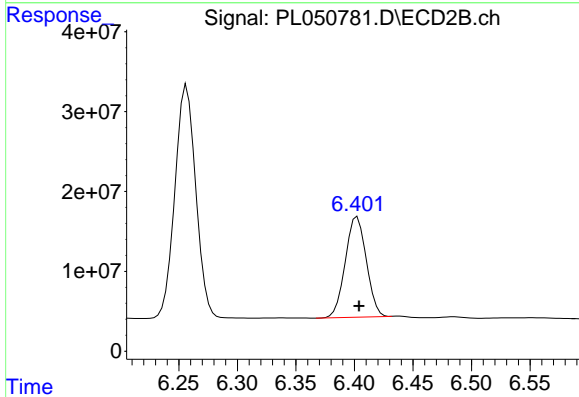


#12 4,4'-DDE  
 R.T.: 6.257 min  
 Delta R.T.: -0.001 min  
 Response: 360704771  
 Conc: 100.10 ng/ml

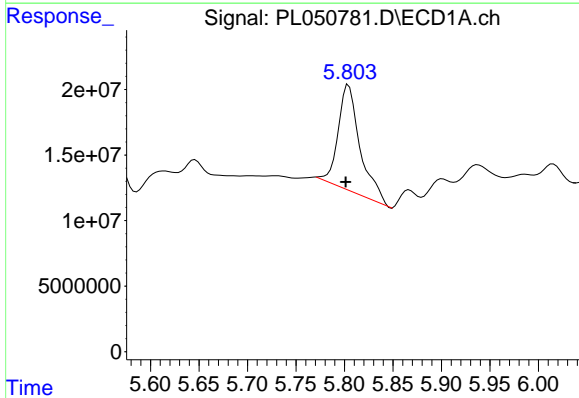


#13 Dieldrin  
 R.T.: 5.548 min  
 Delta R.T.: 0.000 min  
 Response: 767077030  
 Conc: 49.50 ng/ml

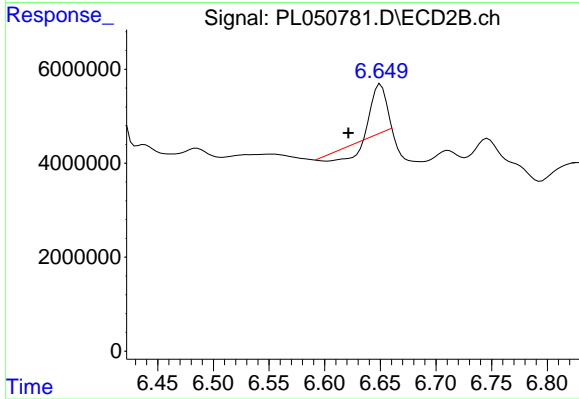
Instrument :  
 ECD\_L  
 ClientSampled :  
 TP-2-A



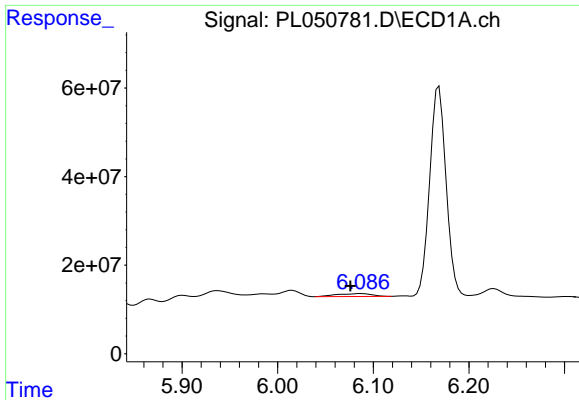
#13 Dieldrin  
 R.T.: 6.402 min  
 Delta R.T.: -0.001 min  
 Response: 157469405  
 Conc: 44.47 ng/ml



#14 Endrin  
 R.T.: 5.804 min  
 Delta R.T.: 0.003 min  
 Response: 126766403  
 Conc: 8.61 ng/ml



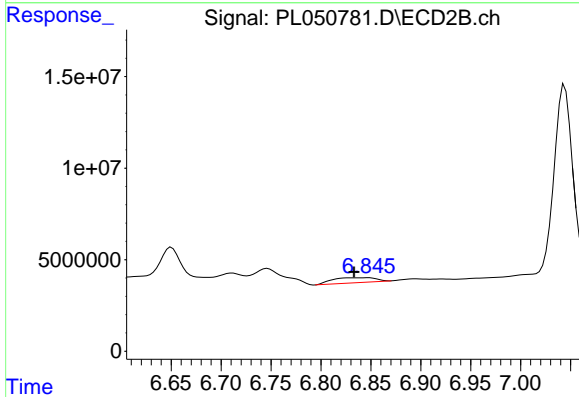
#14 Endrin  
 R.T.: 6.650 min  
 Delta R.T.: 0.029 min  
 Response: 5681395  
 Conc: 1.83 ng/ml



#15 Endosulfan II

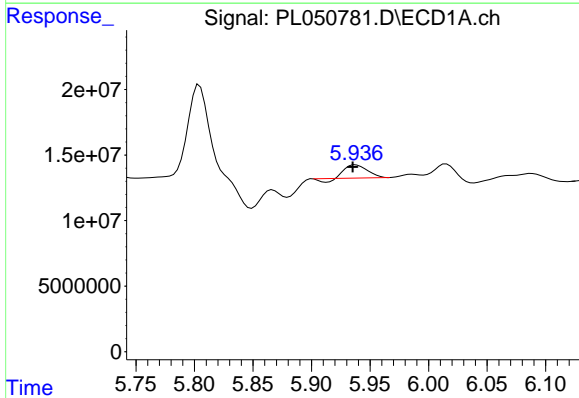
R.T.: 6.088 min  
 Delta R.T.: 0.012 min  
 Response: 16814358  
 Conc: 1.20 ng/ml

Instrument :  
 ECD\_L  
 ClientSampled :  
 TP-2-A



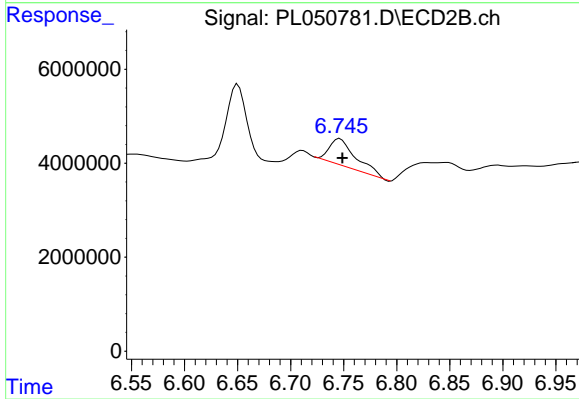
#15 Endosulfan II

R.T.: 6.847 min  
 Delta R.T.: 0.014 min  
 Response: 8085448  
 Conc: 2.54 ng/ml



#16 4,4'-DDD

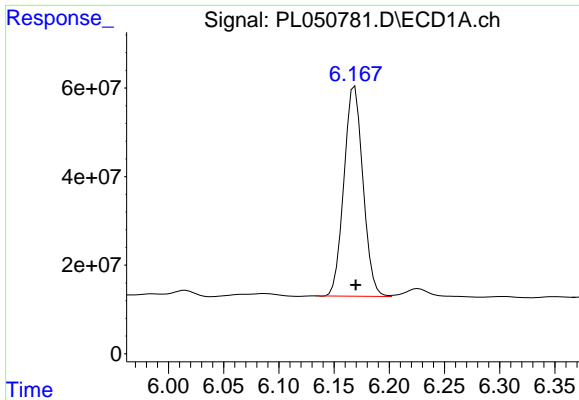
R.T.: 5.938 min  
 Delta R.T.: 0.002 min  
 Response: 12011906  
 Conc: 1.00 ng/ml



#16 4,4'-DDD

R.T.: 6.746 min  
 Delta R.T.: -0.002 min  
 Response: 9976840  
 Conc: 3.75 ng/ml

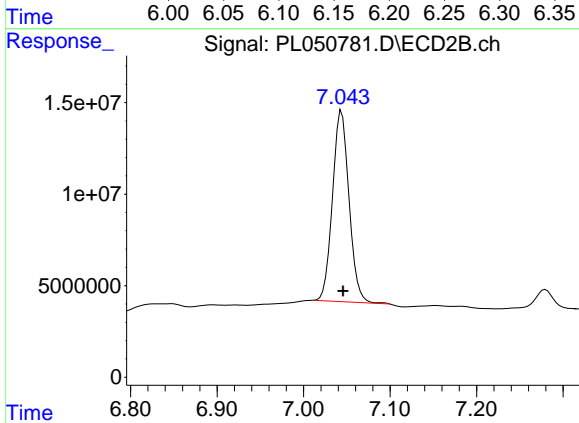




#17 4,4'-DDT

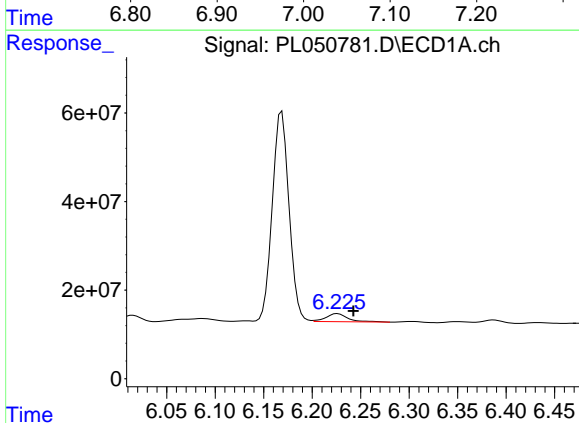
R.T.: 6.169 min  
 Delta R.T.: 0.000 min  
 Response: 568145465  
 Conc: 45.87 ng/ml

Instrument :  
 ECD\_L  
 ClientSampled :  
 TP-2-A



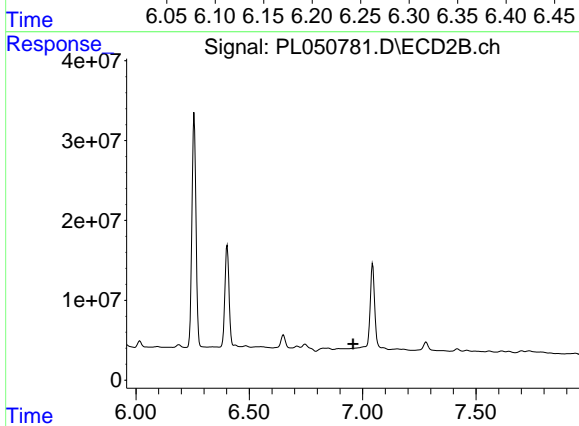
#17 4,4'-DDT

R.T.: 7.044 min  
 Delta R.T.: -0.002 min  
 Response: 137773778  
 Conc: 51.04 ng/ml



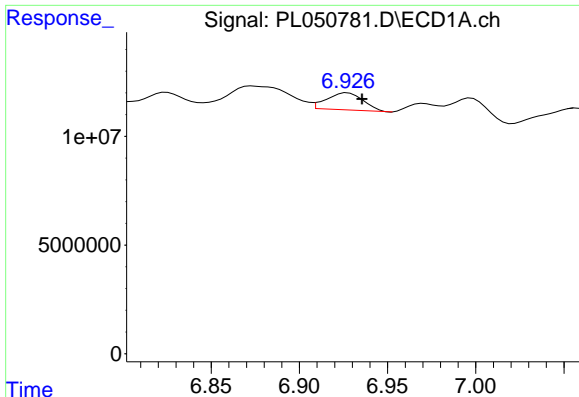
#18 Endrin aldehyde

R.T.: 6.226 min  
 Delta R.T.: -0.016 min  
 Response: 28136016  
 Conc: 2.44 ng/ml



#18 Endrin aldehyde

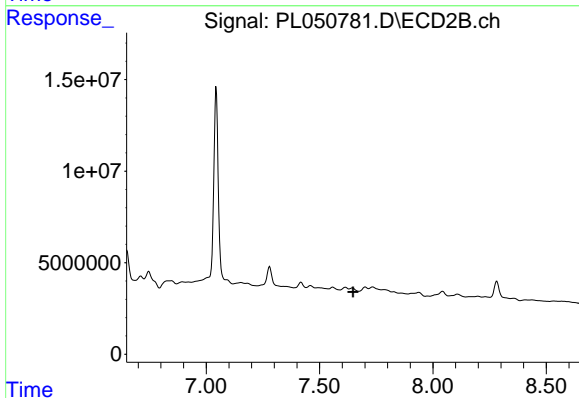
R.T.: 0.000 min  
 Exp R.T.: 6.957 min  
 Response: 0  
 Conc: N.D.



#21 Endrin ketone

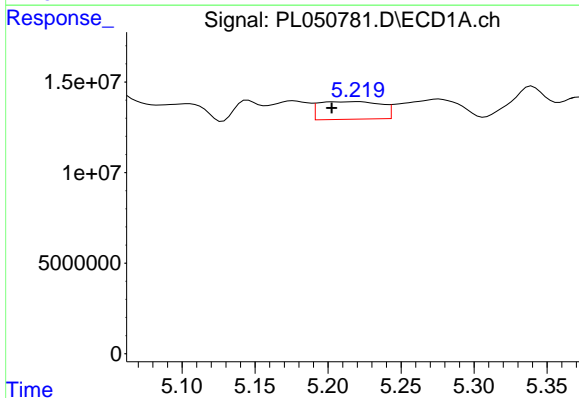
R.T.: 6.927 min  
 Delta R.T.: -0.008 min  
 Response: 11374167  
 Conc: 0.83 ng/ml

Instrument :  
 ECD\_L  
 ClientSampled :  
 TP-2-A



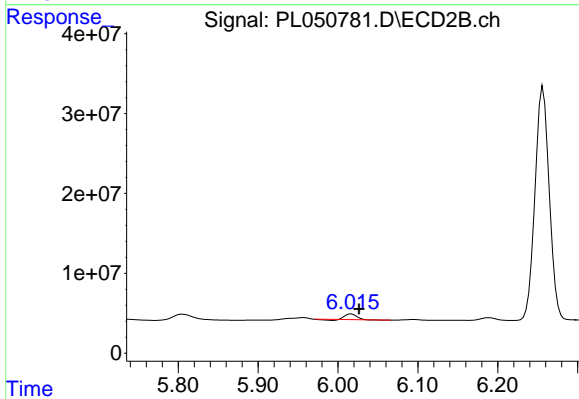
#21 Endrin ketone

R.T.: 0.000 min  
 Exp R.T. : 7.648 min  
 Response: 0  
 Conc: N.D.



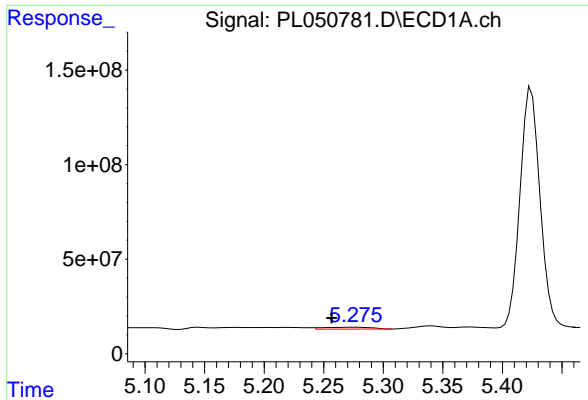
#25 Chlordane-3

R.T.: 5.221 min  
 Delta R.T.: 0.018 min  
 Response: 28607057  
 Conc: 20.44 ng/ml



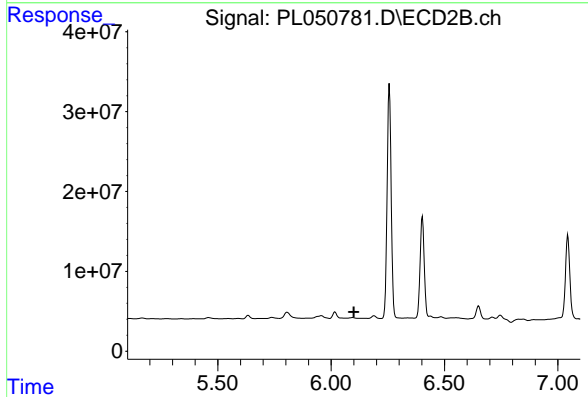
#25 Chlordane-3

R.T.: 6.017 min  
 Delta R.T.: -0.010 min  
 Response: 6656394  
 Conc: 13.84 ng/ml

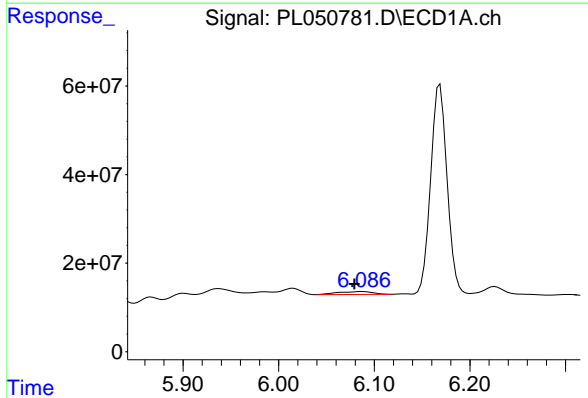


#26 Chlordane-4  
 R.T.: 5.276 min  
 Delta R.T.: 0.019 min  
 Response: 28628161  
 Conc: 21.70 ng/ml

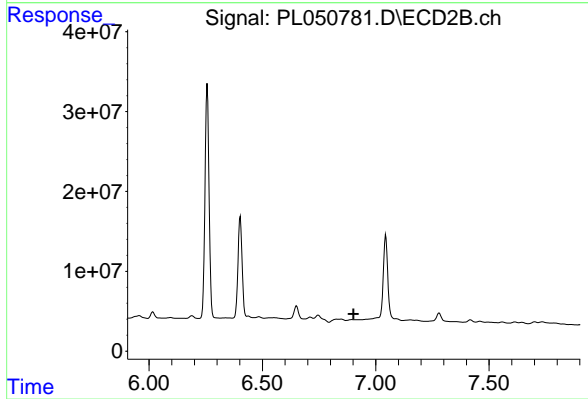
Instrument :  
 ECD\_L  
 ClientSampled :  
 TP-2-A



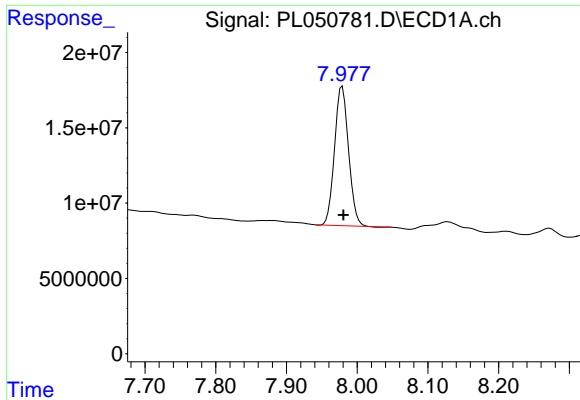
#26 Chlordane-4  
 R.T.: 0.000 min  
 Exp R.T. : 6.100 min  
 Response: 0  
 Conc: N.D.



#27 Chlordane-5  
 R.T.: 6.088 min  
 Delta R.T.: 0.009 min  
 Response: 16814358  
 Conc: 33.10 ng/ml



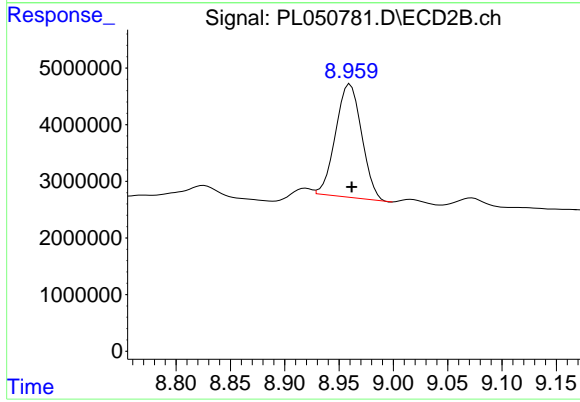
#27 Chlordane-5  
 R.T.: 0.000 min  
 Exp R.T. : 6.902 min  
 Response: 0  
 Conc: N.D.



#28 Decachlorobiphenyl

R.T.: 7.979 min  
Delta R.T.: -0.002 min  
Response: 127006707  
Conc: 12.54 ng/ml

Instrument :  
ECD\_L  
ClientSampleId :  
TP-2-A



#28 Decachlorobiphenyl

R.T.: 8.960 min  
Delta R.T.: -0.001 min  
Response: 33459742  
Conc: 11.83 ng/ml