

Data Path : Z:\pestpcbsrv\HPCHEM1\ECD_L\Data\PL072623\
 Data File : PL084230.D
 Signal(s) : Signal #1: ECD1A.ch Signal #2: ECD2B.ch
 Acq On : 26 Jul 2023 16:02
 Operator : AR\AJ
 Sample : I.BLK
 Misc :
 ALS Vial : 2 Sample Multiplier: 1

Instrument :
 ECD_L
 ClientSampleId :
 I.BLK

Integration File signal 1: autoint1.e
 Integration File signal 2: autoint2.e
 Quant Time: Jul 26 21:29:47 2023
 Quant Method : Z:\pestpcbsrv\HPCHEM1\ECD_L\methods\PL071223.M
 Quant Title : GC Extractables
 QLast Update : Fri Jul 14 00:03:54 2023
 Response via : Initial Calibration
 Integrator: ChemStation

Volume Inj. : 1 µl
 Signal #1 Phase : ZB-MR2 Signal #2 Phase: ZB-MR1
 Signal #1 Info : 30M x 0.32mm x0.2 Signal #2 Info : 30M x 0.32mm x0.5µm

Compound	RT#1	RT#2	Resp#1	Resp#2	ng/ml	ng/ml

System Monitoring Compounds						
1) SA Tetrachlo...	3.483	2.688	36994516	18524298	18.498	16.680
28) SA Decachlor...	9.031	7.872	27730953	20197457	21.304	18.177

Target Compounds

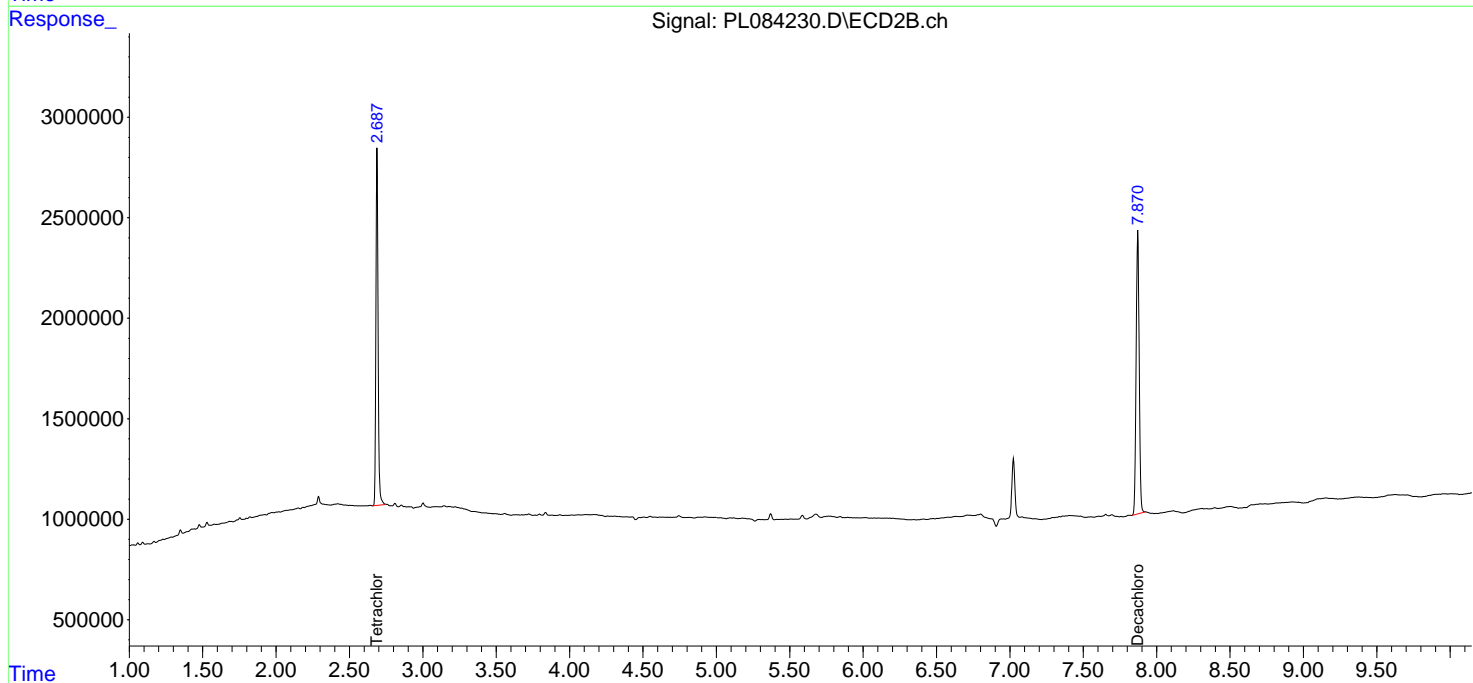
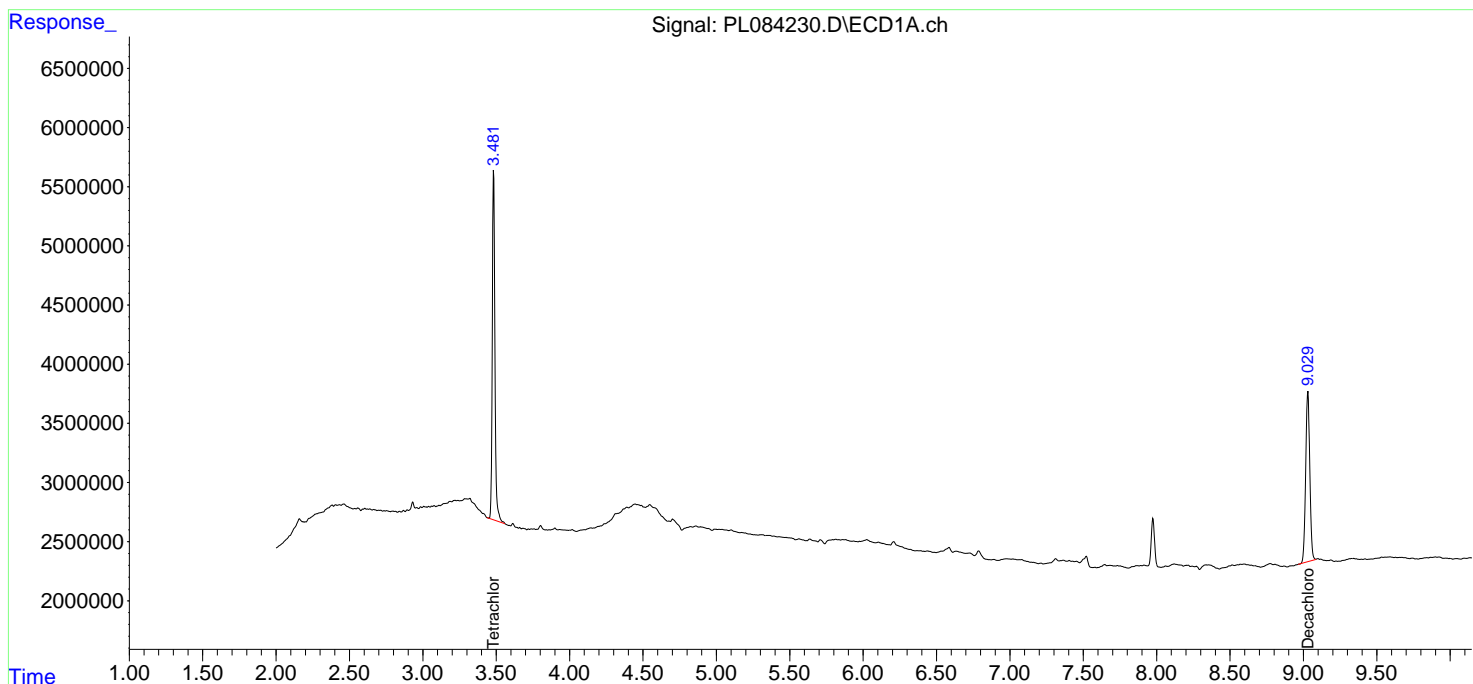
(f)=RT Delta > 1/2 Window (#)=Amounts differ by > 25% (m)=manual int.

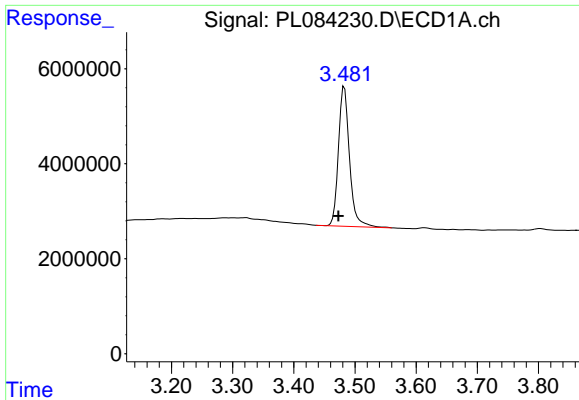
Data Path : Z:\pestpcbsrv\HPCHEM1\ECD_L\Data\PL072623\
Data File : PL084230.D
Signal(s) : Signal #1: ECD1A.ch Signal #2: ECD2B.ch
Acq On : 26 Jul 2023 16:02
Operator : AR\AJ
Sample : I.BLK
Misc :
ALS Vial : 2 Sample Multiplier: 1

Instrument :
ECD_L
ClientSampleId :
I.BLK

Integration File signal 1: autoint1.e
Integration File signal 2: autoint2.e
Quant Time: Jul 26 21:29:47 2023
Quant Method : Z:\pestpcbsrv\HPCHEM1\ECD_L\methods\PL071223.M
Quant Title : GC Extractables
QLast Update : Fri Jul 14 00:03:54 2023
Response via : Initial Calibration
Integrator: ChemStation

Volume Inj. : 1 µl
Signal #1 Phase : ZB-MR2 Signal #2 Phase: ZB-MR1
Signal #1 Info : 30M x 0.32mm x0.2 Signal #2 Info : 30M x 0.32mm x0.5µm

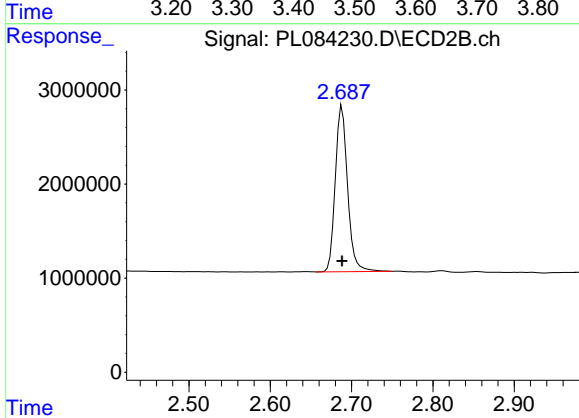




#1 Tetrachloro-m-xylene

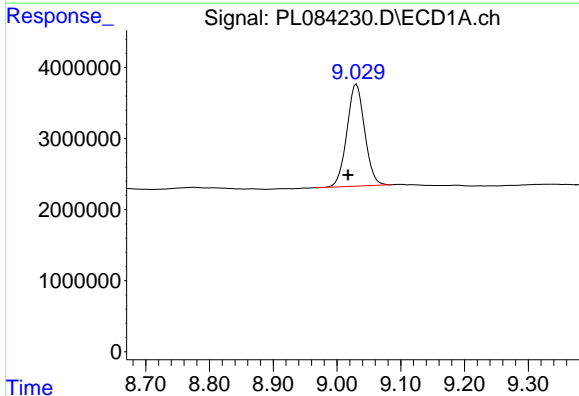
R.T.: 3.483 min
 Delta R.T.: 0.010 min
 Response: 36994516
 Conc: 18.50 ng/ml

Instrument :
 ECD_L
 ClientSampleId :
 I.BLK



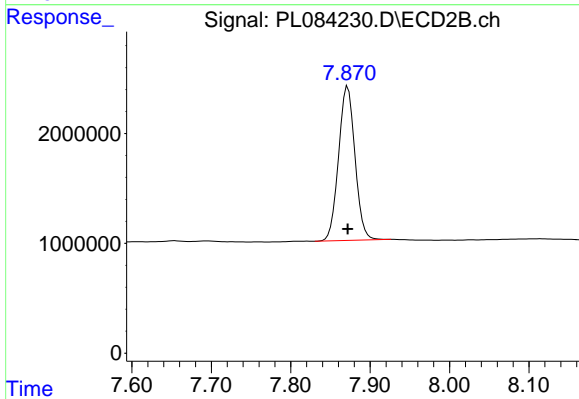
#1 Tetrachloro-m-xylene

R.T.: 2.688 min
 Delta R.T.: 0.000 min
 Response: 18524298
 Conc: 16.68 ng/ml



#28 Decachlorobiphenyl

R.T.: 9.031 min
 Delta R.T.: 0.013 min
 Response: 27730953
 Conc: 21.30 ng/ml



#28 Decachlorobiphenyl

R.T.: 7.872 min
 Delta R.T.: 0.000 min
 Response: 20197457
 Conc: 18.18 ng/ml