

Data Path : Z:\pestpcbsrv\HPCHEM1\ECD_L\Data\PL072623\
 Data File : PL084237.D
 Signal(s) : Signal #1: ECD1A.ch Signal #2: ECD2B.ch
 Acq On : 26 Jul 2023 17:47
 Operator : AR\AJ
 Sample : 03742-03MSD
 Misc :
 ALS Vial : 19 Sample Multiplier: 1

Instrument :
 ECD_L
ClientSampleId :
 B-P32BMSD

Manual Integrations
APPROVED

Reviewed By :Abdul Mirza 07/27/2023
 Supervised By :Ankita Jodhani 07/27/2023

Integration File signal 1: autoint1.e
 Integration File signal 2: autoint2.e
 Quant Time: Jul 26 21:33:28 2023
 Quant Method : Z:\pestpcbsrv\HPCHEM1\ECD_L\methods\PL071223.M
 Quant Title : GC Extractables
 QLast Update : Fri Jul 14 00:03:54 2023
 Response via : Initial Calibration
 Integrator: ChemStation

Volume Inj. : 1 µl
 Signal #1 Phase : ZB-MR2 Signal #2 Phase: ZB-MR1
 Signal #1 Info : 30M x 0.32mm x0.2 Signal #2 Info : 30M x 0.32mm x0.5µm

	Compound	RT#1	RT#2	Resp#1	Resp#2	ng/ml	ng/ml

System Monitoring Compounds							
1)	SA Tetrachlo...	3.484	2.689	34600571	16545439	17.301	14.898
28)	SA Decachlor...	9.033	7.873	22989862	17377323	17.662	15.639
Target Compounds							
2)	A alpha-BHC	3.942	3.194	142.1E6	72728606	48.511	45.233
3)	MA gamma-BHC...	4.276	3.525	133.0E6	68449202	47.060	45.012
4)	MA Heptachlor	4.868	3.867	155.5E6	67184352	57.222	57.009
5)	MB Aldrin	5.211	4.147	138.2E6	66451655	48.256	44.071
6)	B beta-BHC	4.475	3.827	59612077	30914065	49.683	46.835
7)	B delta-BHC	4.722	4.056	104.0E6	51119826	39.023	33.795
8)	B Heptachlo...	5.640	4.654	127.7E6	60917365	47.820	47.437
9)	A Endosulfan I	6.026	5.024	114.6E6	57737636	48.394	47.074
10)	B gamma-Chl...	5.898	4.907	125.5E6	63583003	48.624	47.729
11)	B alpha-Chl...	5.977	4.971	122.9E6	62807176	48.363	46.623
12)	B 4,4'-DDE	6.156	5.170	102.9E6	58320354	51.138	47.478
13)	MA Dieldrin	6.302	5.291	110.0E6	60564770	46.046	46.504
14)	MA Endrin	6.531	5.566	90170697	53748532	47.348m	48.896
15)	B Endosulfa...	6.751	5.864	83260624	51819105	44.422m	45.086
16)	A 4,4'-DDD	6.675	5.727	77430629	49668641	52.727	51.773
17)	MA 4,4'-DDT	6.989	5.979	75521010	50060230	47.355	54.963
18)	B Endrin al...	6.883	6.046	67452563	42689296	46.040	47.489
19)	B Endosulfa...	7.117	6.270	79349874	50022982	45.902m	45.516
20)	A Methoxychlor	7.470	6.564	38295492	27217709	48.957m	56.793
21)	B Endrin ke...	7.601	6.775	81584215	64473614	46.554m	49.899
22)	Mirex	8.078	6.956	67129552	48703562	46.913	47.717

(f)=RT Delta > 1/2 Window (#)=Amounts differ by > 25% (m)=manual int.

Data Path : Z:\pestpcbsrv\HPCHEM1\ECD_L\Data\PL072623\
 Data File : PL084237.D
 Signal(s) : Signal #1: ECD1A.ch Signal #2: ECD2B.ch
 Acq On : 26 Jul 2023 17:47
 Operator : AR\AJ
 Sample : 03742-03MSD
 Misc :
 ALS Vial : 19 Sample Multiplier: 1

Instrument :

ECD_L

ClientSampleId :

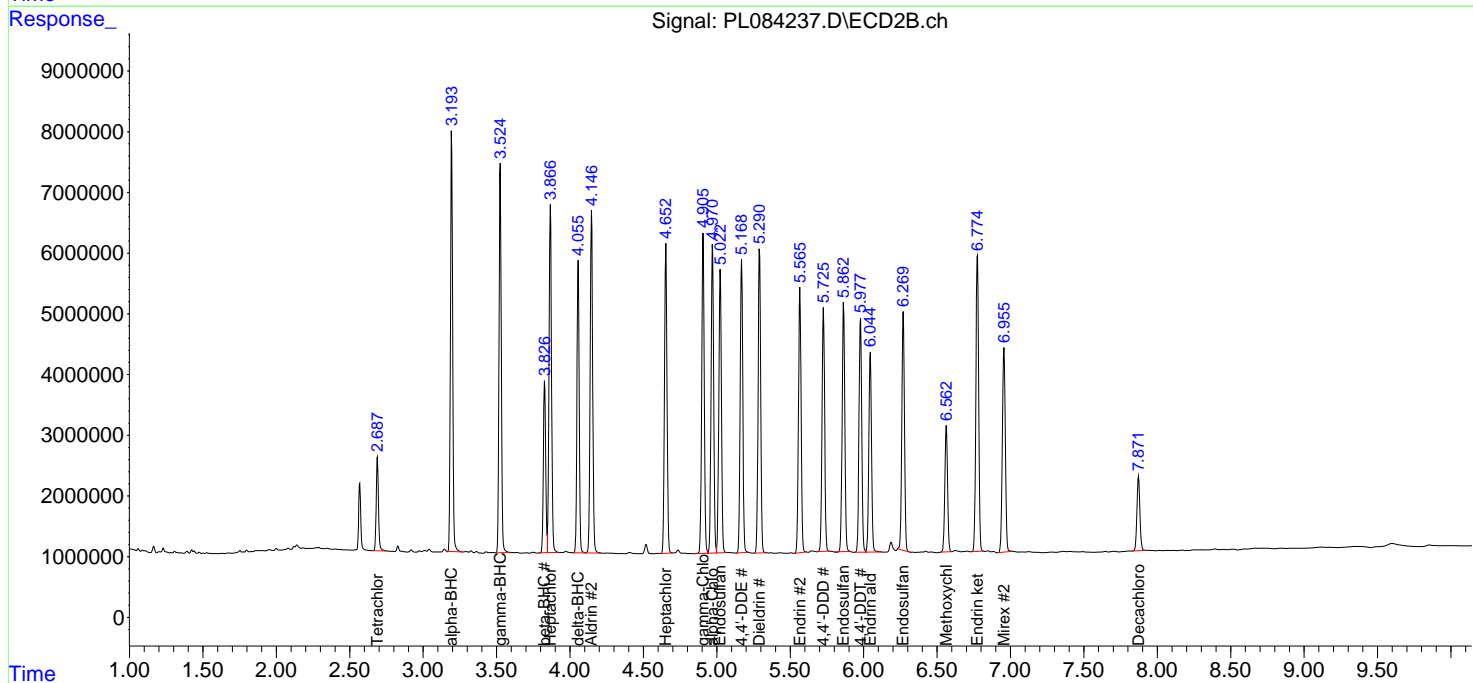
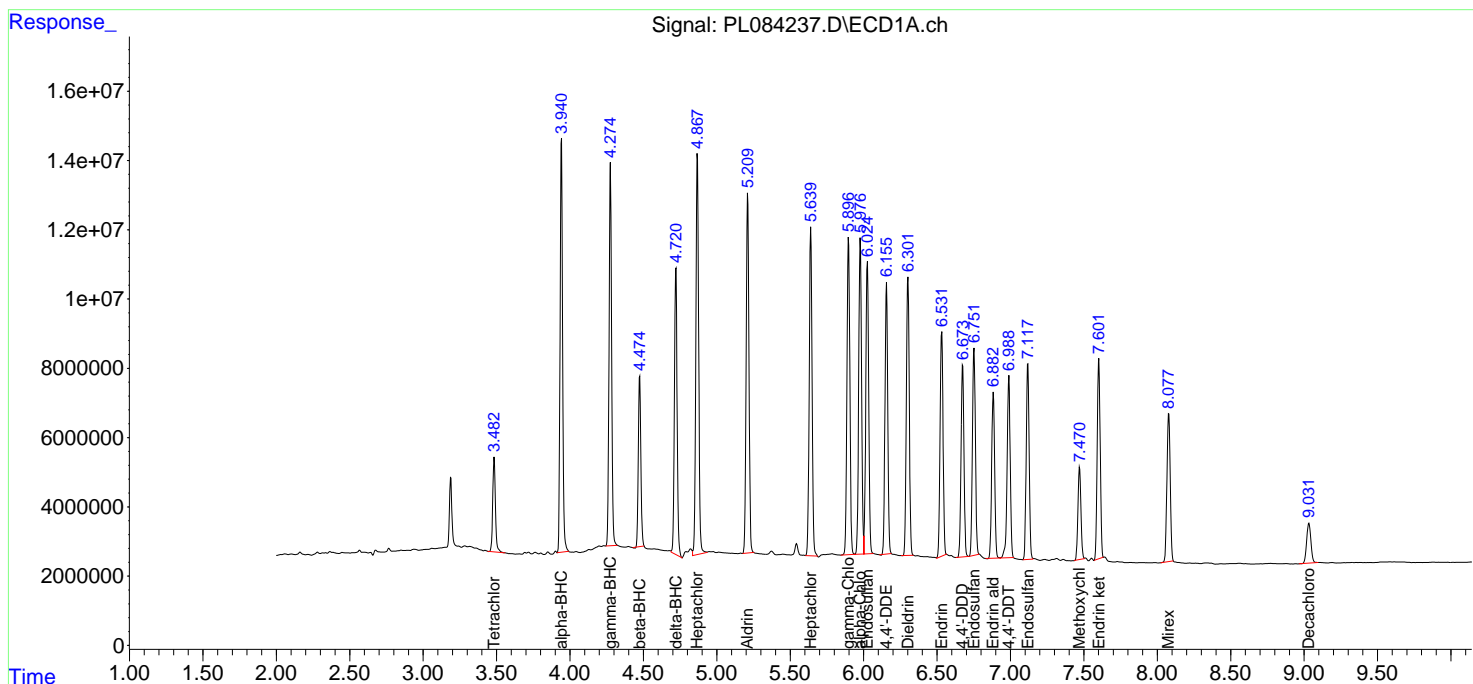
B-P32BMDS

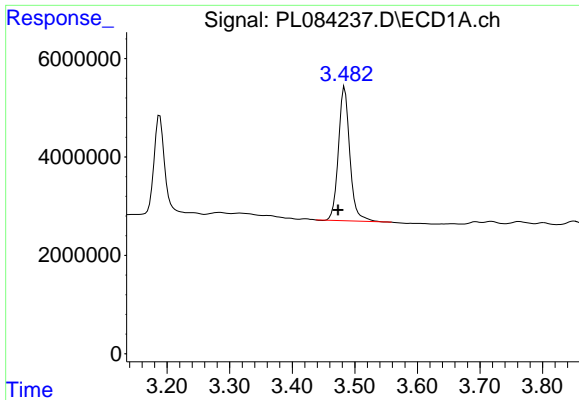
Manual Integrations
APPROVED

Reviewed By :Abdul Mirza 07/27/2023
 Supervised By :Ankita Jodhani 07/27/2023

Integration File signal 1: autoint1.e
 Integration File signal 2: autoint2.e
 Quant Time: Jul 26 21:33:28 2023
 Quant Method : Z:\pestpcbsrv\HPCHEM1\ECD_L\methods\PL071223.M
 Quant Title : GC Extractables
 QLast Update : Fri Jul 14 00:03:54 2023
 Response via : Initial Calibration
 Integrator: ChemStation

Volume Inj. : 1 µl
 Signal #1 Phase : ZB-MR2 Signal #2 Phase: ZB-MR1
 Signal #1 Info : 30M x 0.32mm x0.2 Signal #2 Info : 30M x 0.32mm x0.5µm

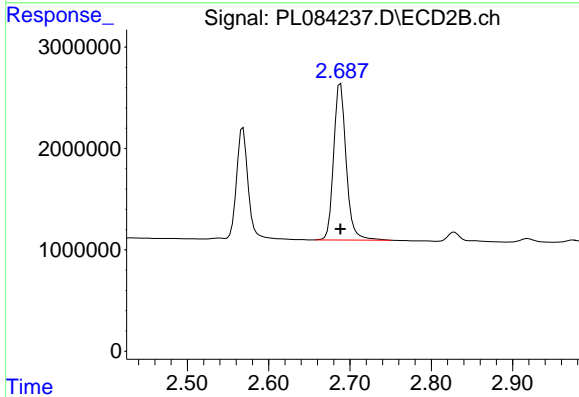




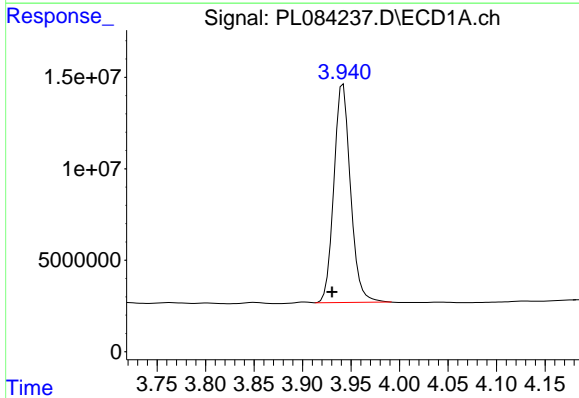
#1 Tetrachloro-m-xylene
 R.T.: 3.484 min
 Delta R.T.: 0.011 min
 Response: 34600571
 Conc: 17.30 ng/ml

Instrument : ECD_L
 Client Sample Id : B-P32BMSD

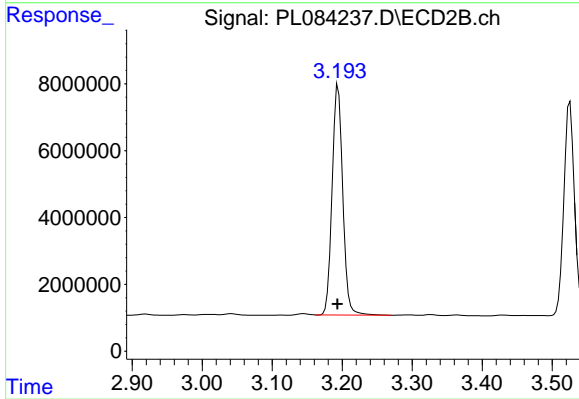
Manual Integrations
APPROVED
 Reviewed By :Abdul Mirza 07/27/2023
 Supervised By :Ankita Jodhani 07/27/2023



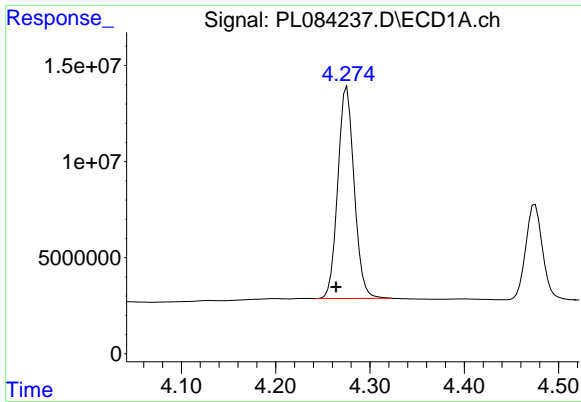
#1 Tetrachloro-m-xylene
 R.T.: 2.689 min
 Delta R.T.: 0.000 min
 Response: 16545439
 Conc: 14.90 ng/ml



#2 alpha-BHC
 R.T.: 3.942 min
 Delta R.T.: 0.011 min
 Response: 142128006
 Conc: 48.51 ng/ml



#2 alpha-BHC
 R.T.: 3.194 min
 Delta R.T.: 0.001 min
 Response: 72728606
 Conc: 45.23 ng/ml



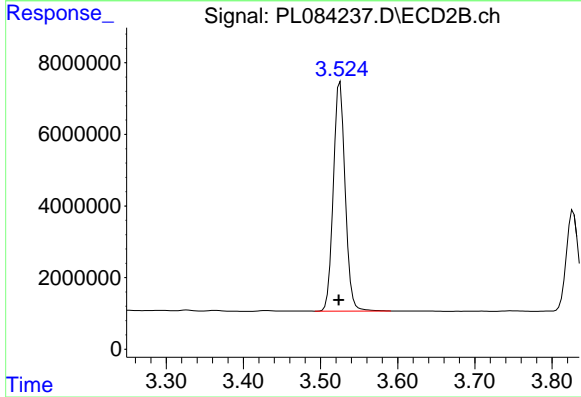
#3 gamma-BHC (Lindane)

R.T.: 4.276 min
 Delta R.T.: 0.012 min
 Response: 132961221
 Conc: 47.06 ng/ml

Instrument :
 ECD_L
 ClientSampleId :
 B-P32BMDS

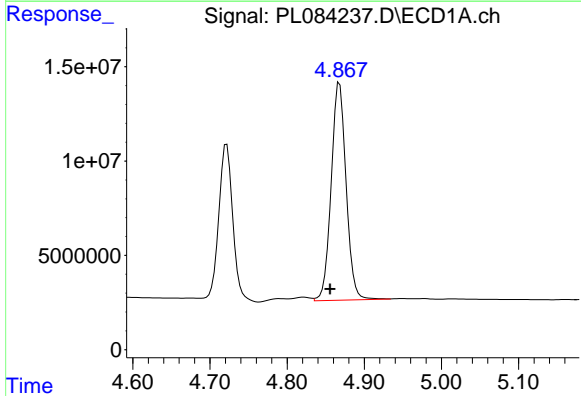
Manual Integrations
 APPROVED

Reviewed By :Abdul Mirza 07/27/2023
 Supervised By :Ankita Jodhani 07/27/2023



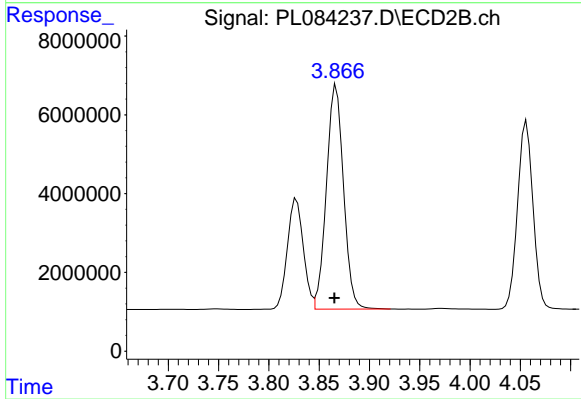
#3 gamma-BHC (Lindane)

R.T.: 3.525 min
 Delta R.T.: 0.002 min
 Response: 68449202
 Conc: 45.01 ng/ml



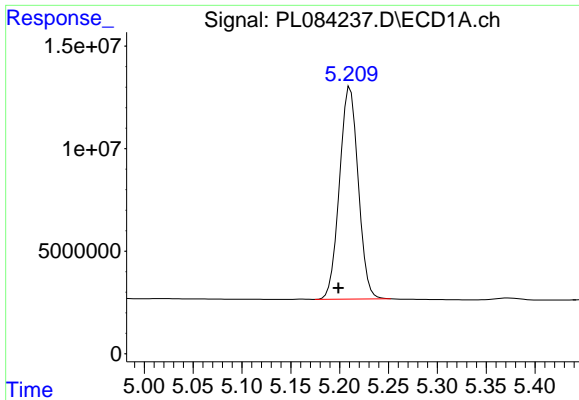
#4 Heptachlor

R.T.: 4.868 min
 Delta R.T.: 0.012 min
 Response: 155505431
 Conc: 57.22 ng/ml



#4 Heptachlor

R.T.: 3.867 min
 Delta R.T.: 0.002 min
 Response: 67184352
 Conc: 57.01 ng/ml

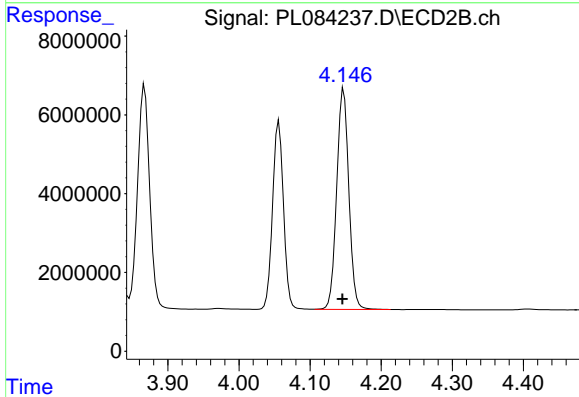


#5 Aldrin
 R.T.: 5.211 min
 Delta R.T.: 0.012 min
 Response: 138215418
 Conc: 48.26 ng/ml

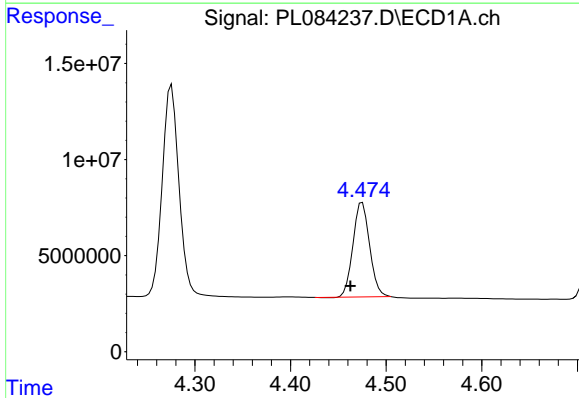
Instrument :
 ECD_L
 ClientSampleId :
 B-P32BMDS

Manual Integrations
 APPROVED

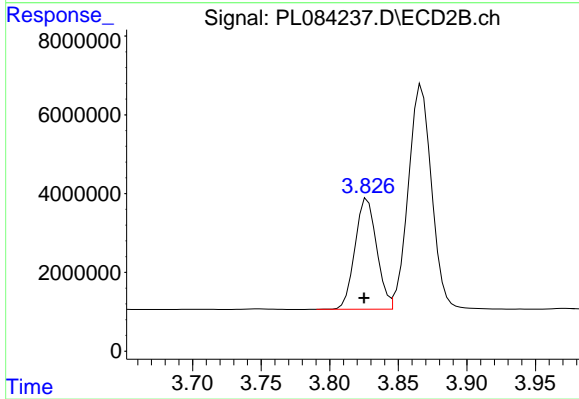
Reviewed By :Abdul Mirza 07/27/2023
 Supervised By :Ankita Jodhani 07/27/2023



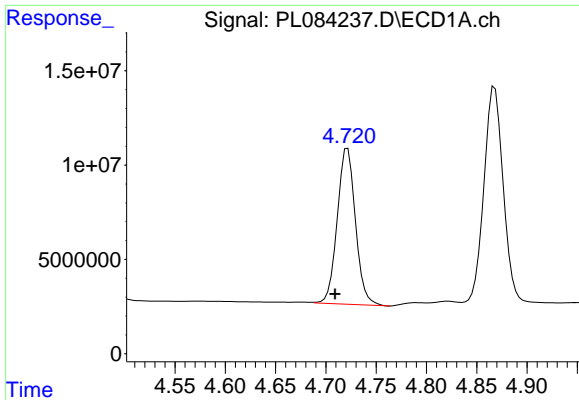
#5 Aldrin
 R.T.: 4.147 min
 Delta R.T.: 0.002 min
 Response: 66451655
 Conc: 44.07 ng/ml



#6 beta-BHC
 R.T.: 4.475 min
 Delta R.T.: 0.012 min
 Response: 59612077
 Conc: 49.68 ng/ml



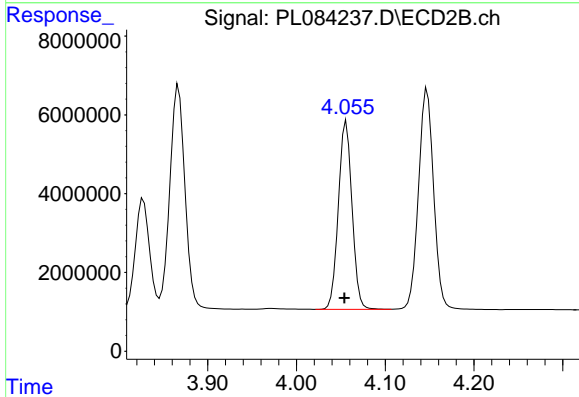
#6 beta-BHC
 R.T.: 3.827 min
 Delta R.T.: 0.002 min
 Response: 30914065
 Conc: 46.84 ng/ml



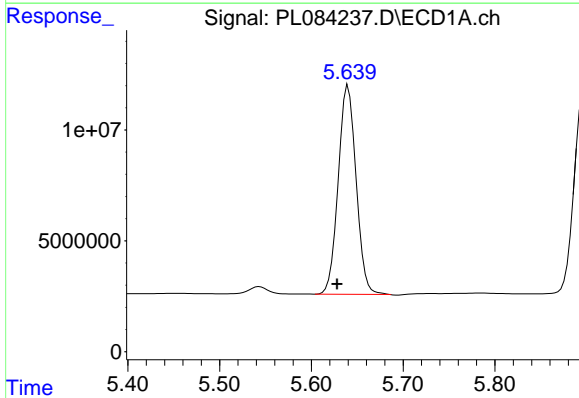
#7 delta-BHC
 R.T.: 4.722 min
 Delta R.T.: 0.012 min
 Response: 104027695
 Conc: 39.02 ng/ml

Instrument : ECD_L
 ClientSampleId : B-P32BMSD

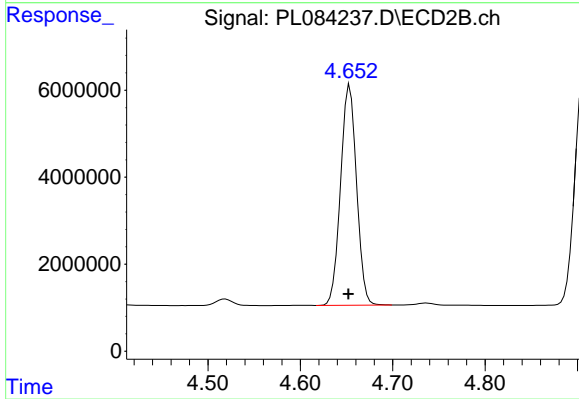
Manual Integrations
APPROVED
 Reviewed By :Abdul Mirza 07/27/2023
 Supervised By :Ankita Jodhani 07/27/2023



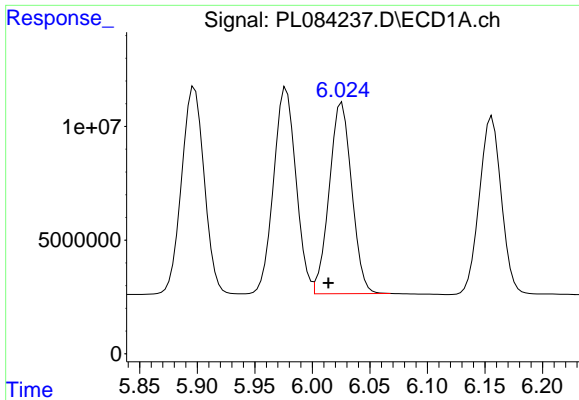
#7 delta-BHC
 R.T.: 4.056 min
 Delta R.T.: 0.002 min
 Response: 51119826
 Conc: 33.80 ng/ml



#8 Heptachlor epoxide
 R.T.: 5.640 min
 Delta R.T.: 0.012 min
 Response: 127660667
 Conc: 47.82 ng/ml



#8 Heptachlor epoxide
 R.T.: 4.654 min
 Delta R.T.: 0.001 min
 Response: 60917365
 Conc: 47.44 ng/ml



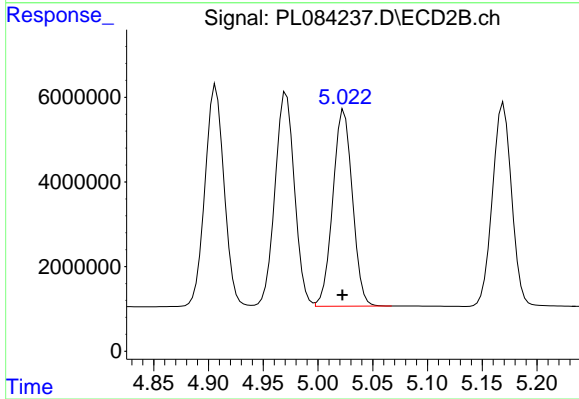
#9 Endosulfan I

R.T.: 6.026 min
 Delta R.T.: 0.012 min
 Response: 114605834
 Conc: 48.39 ng/ml

Instrument :
 ECD_L
 ClientSampleId :
 B-P32BMSD

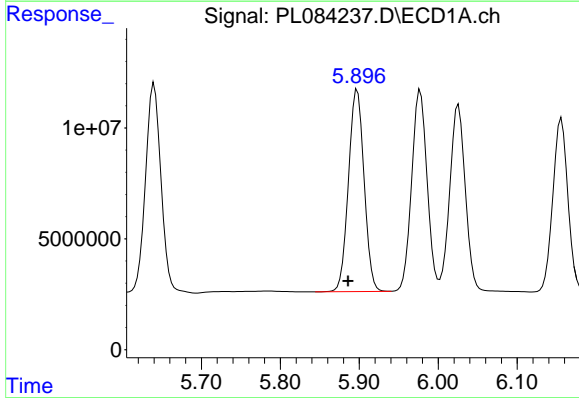
Manual Integrations
 APPROVED

Reviewed By :Abdul Mirza 07/27/2023
 Supervised By :Ankita Jodhani 07/27/2023



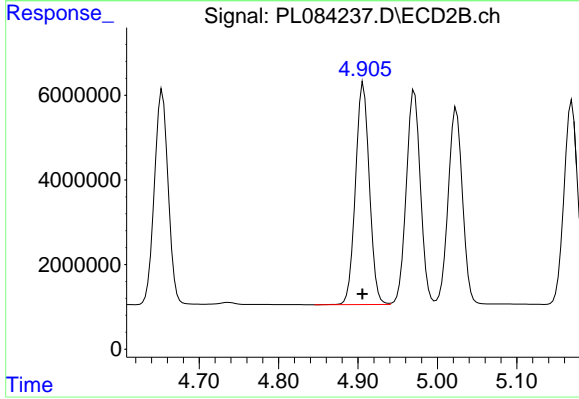
#9 Endosulfan I

R.T.: 5.024 min
 Delta R.T.: 0.002 min
 Response: 57737636
 Conc: 47.07 ng/ml



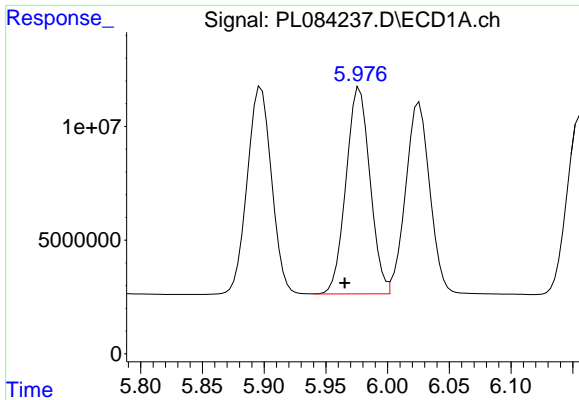
#10 gamma-Chlordane

R.T.: 5.898 min
 Delta R.T.: 0.012 min
 Response: 125544072
 Conc: 48.62 ng/ml



#10 gamma-Chlordane

R.T.: 4.907 min
 Delta R.T.: 0.001 min
 Response: 63583003
 Conc: 47.73 ng/ml



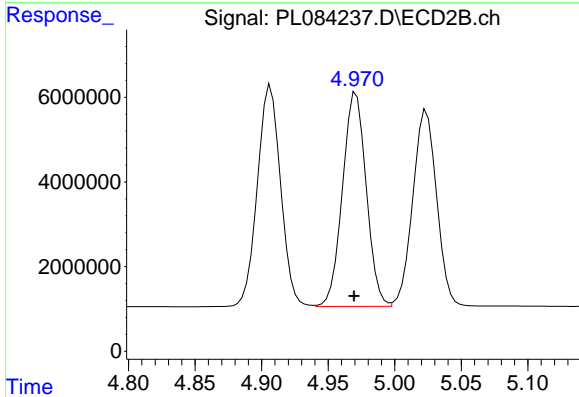
#11 alpha-Chlordane

R.T.: 5.977 min
 Delta R.T.: 0.012 min
 Response: 122940884
 Conc: 48.36 ng/ml

Instrument :
 ECD_L
 ClientSampleId :
 B-P32BMSD

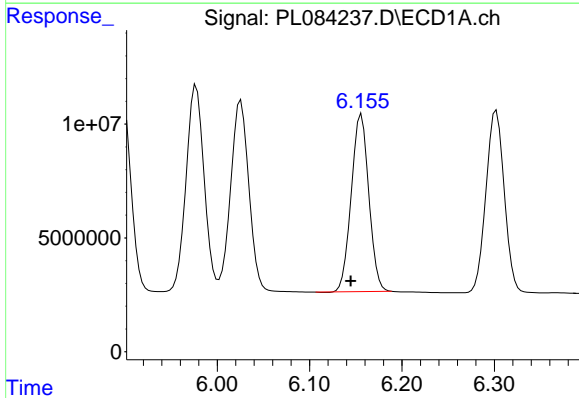
Manual Integrations
 APPROVED

Reviewed By :Abdul Mirza 07/27/2023
 Supervised By :Ankita Jodhani 07/27/2023



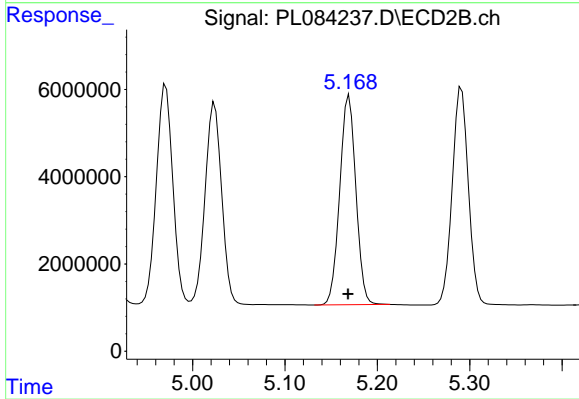
#11 alpha-Chlordane

R.T.: 4.971 min
 Delta R.T.: 0.002 min
 Response: 62807176
 Conc: 46.62 ng/ml



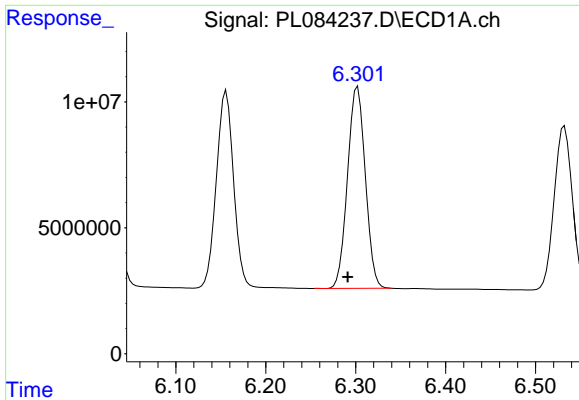
#12 4,4'-DDE

R.T.: 6.156 min
 Delta R.T.: 0.012 min
 Response: 102888767
 Conc: 51.14 ng/ml



#12 4,4'-DDE

R.T.: 5.170 min
 Delta R.T.: 0.001 min
 Response: 58320354
 Conc: 47.48 ng/ml



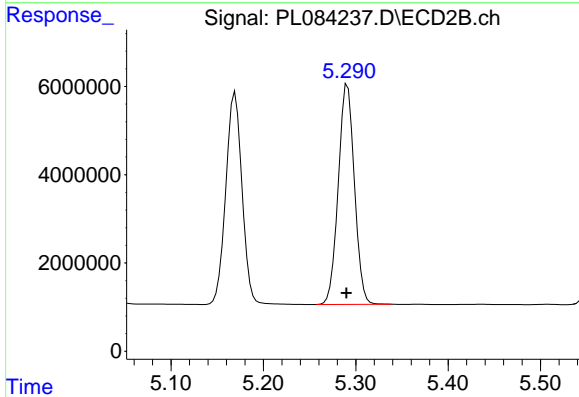
#13 Dieldrin

R.T.: 6.302 min
 Delta R.T.: 0.011 min
 Response: 110029606
 Conc: 46.05 ng/ml

Instrument :
 ECD_L
 ClientSampleId :
 B-P32BMSD

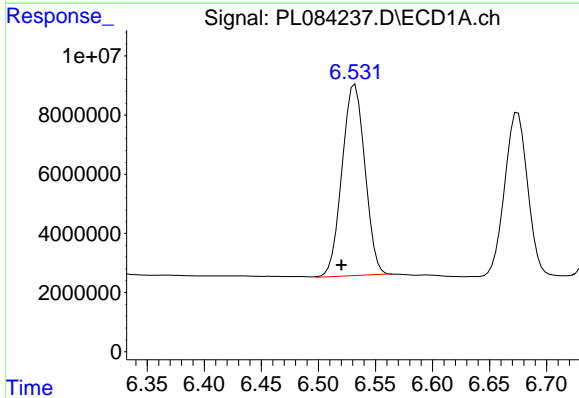
Manual Integrations
 APPROVED

Reviewed By :Abdul Mirza 07/27/2023
 Supervised By :Ankita Jodhani 07/27/2023



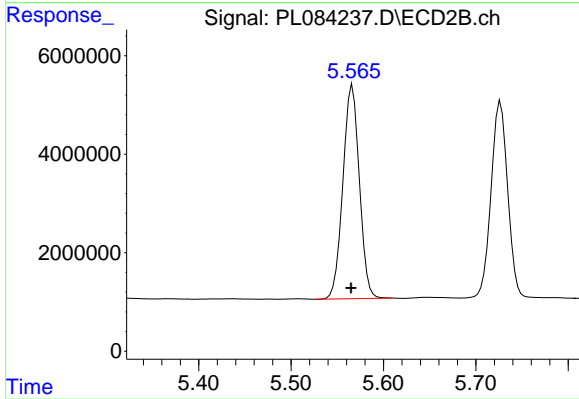
#13 Dieldrin

R.T.: 5.291 min
 Delta R.T.: 0.001 min
 Response: 60564770
 Conc: 46.50 ng/ml



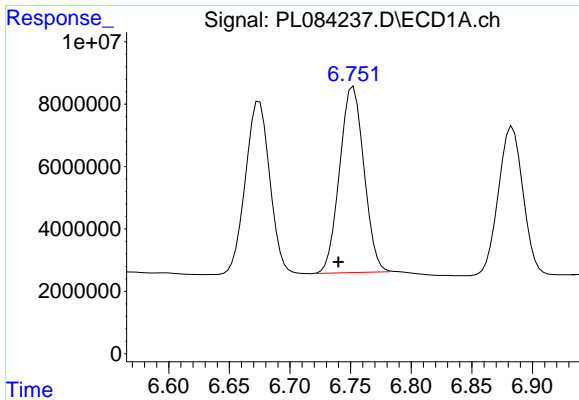
#14 Endrin

R.T.: 6.531 min
 Delta R.T.: 0.011 min
 Response: 90170697
 Conc: 47.35 ng/ml m



#14 Endrin

R.T.: 5.566 min
 Delta R.T.: 0.002 min
 Response: 53748532
 Conc: 48.90 ng/ml



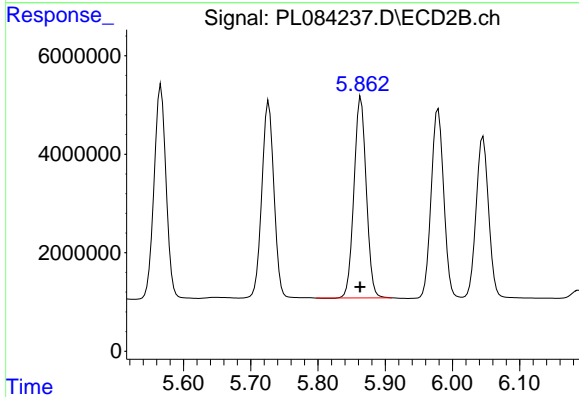
#15 Endosulfan II

R.T.: 6.751 min
 Delta R.T.: 0.011 min
 Response: 83260624
 Conc: 44.42 ng/ml

Instrument :
 ECD_L
 ClientSampleId :
 B-P32BMSD

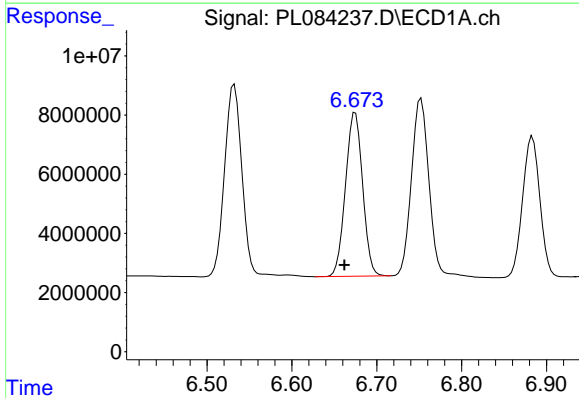
Manual Integrations
 APPROVED

Reviewed By :Abdul Mirza 07/27/2023
 Supervised By :Ankita Jodhani 07/27/2023



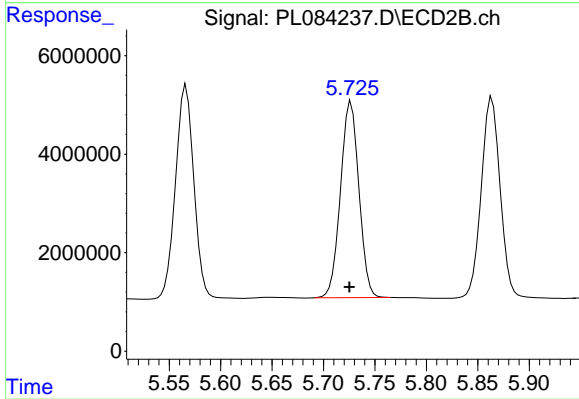
#15 Endosulfan II

R.T.: 5.864 min
 Delta R.T.: 0.001 min
 Response: 51819105
 Conc: 45.09 ng/ml



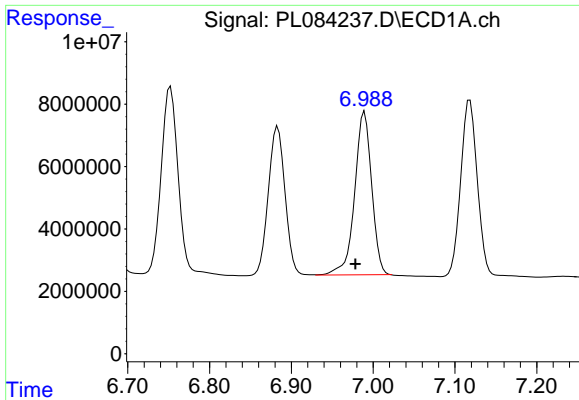
#16 4,4'-DDD

R.T.: 6.675 min
 Delta R.T.: 0.013 min
 Response: 77430629
 Conc: 52.73 ng/ml



#16 4,4'-DDD

R.T.: 5.727 min
 Delta R.T.: 0.002 min
 Response: 49668641
 Conc: 51.77 ng/ml



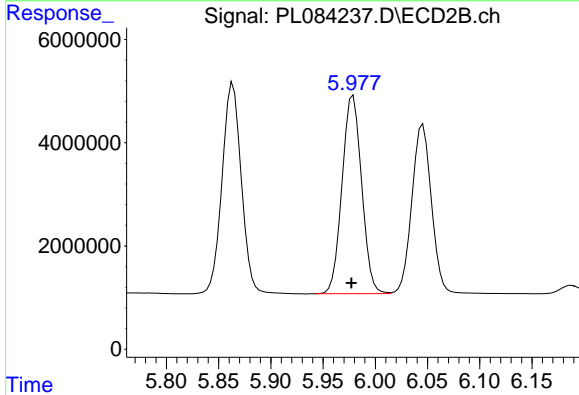
#17 4,4'-DDT

R.T.: 6.989 min
 Delta R.T.: 0.011 min
 Response: 75521010
 Conc: 47.35 ng/ml

Instrument :
 ECD_L
 ClientSampleId :
 B-P32BMDS

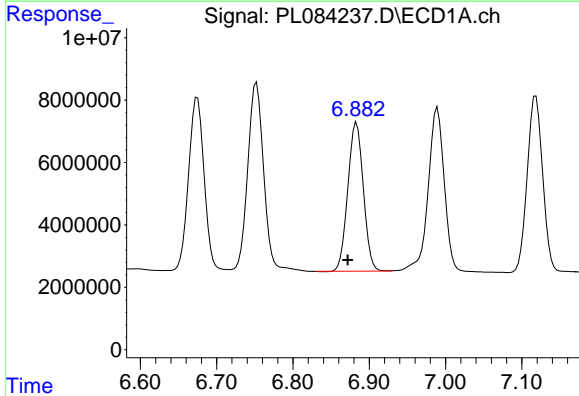
Manual Integrations
 APPROVED

Reviewed By :Abdul Mirza 07/27/2023
 Supervised By :Ankita Jodhani 07/27/2023



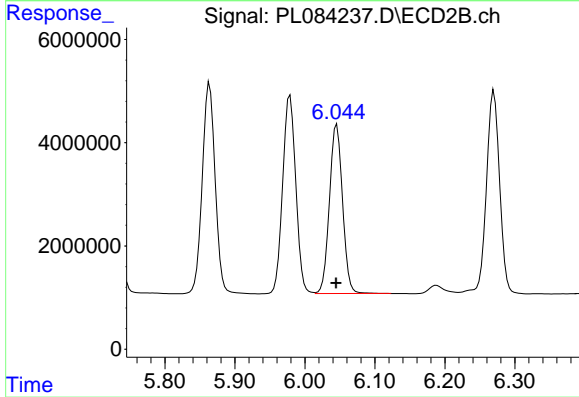
#17 4,4'-DDT

R.T.: 5.979 min
 Delta R.T.: 0.002 min
 Response: 50060230
 Conc: 54.96 ng/ml



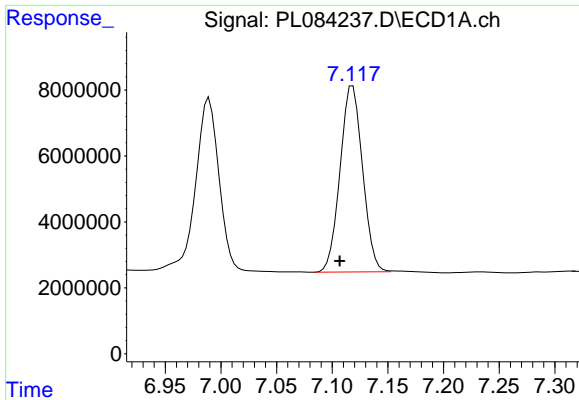
#18 Endrin aldehyde

R.T.: 6.883 min
 Delta R.T.: 0.012 min
 Response: 67452563
 Conc: 46.04 ng/ml



#18 Endrin aldehyde

R.T.: 6.046 min
 Delta R.T.: 0.001 min
 Response: 42689296
 Conc: 47.49 ng/ml



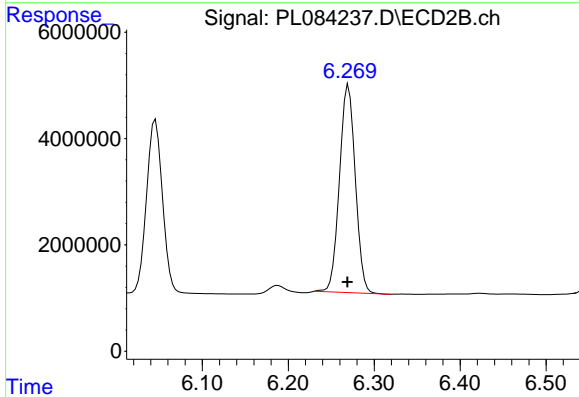
#19 Endosulfan Sulfate

R.T.: 7.117 min
 Delta R.T.: 0.010 min
 Response: 79349874
 Conc: 45.90 ng/ml

Instrument :
 ECD_L
 ClientSampleId :
 B-P32BMSD

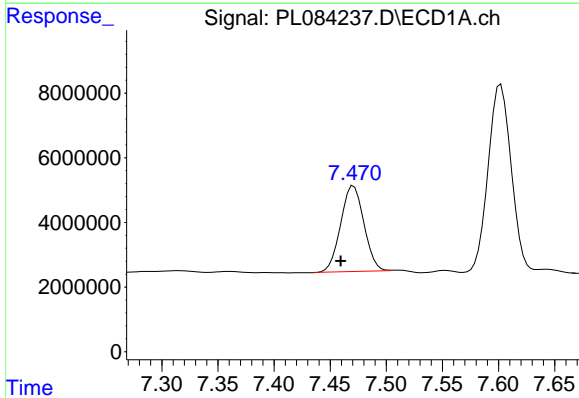
Manual Integrations
 APPROVED

Reviewed By :Abdul Mirza 07/27/2023
 Supervised By :Ankita Jodhani 07/27/2023



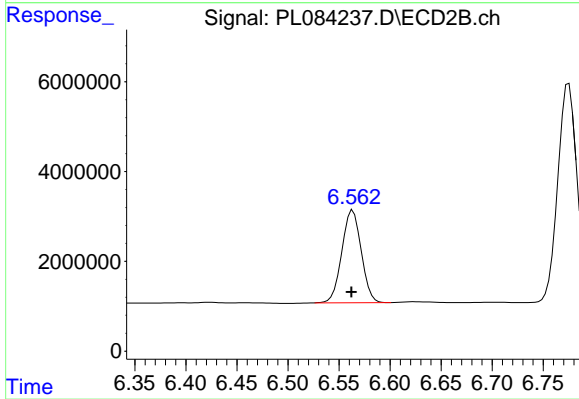
#19 Endosulfan Sulfate

R.T.: 6.270 min
 Delta R.T.: 0.001 min
 Response: 50022982
 Conc: 45.52 ng/ml



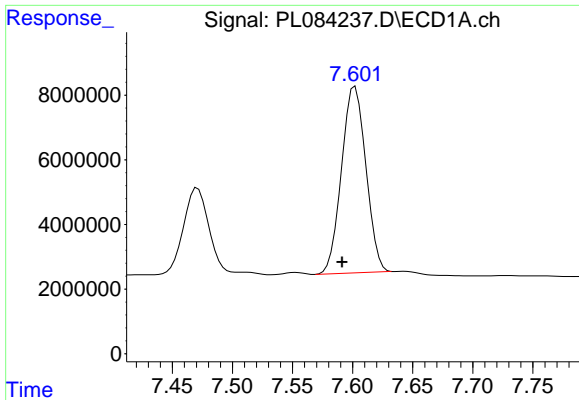
#20 Methoxychlor

R.T.: 7.470 min
 Delta R.T.: 0.010 min
 Response: 38295492
 Conc: 48.96 ng/ml m



#20 Methoxychlor

R.T.: 6.564 min
 Delta R.T.: 0.001 min
 Response: 27217709
 Conc: 56.79 ng/ml



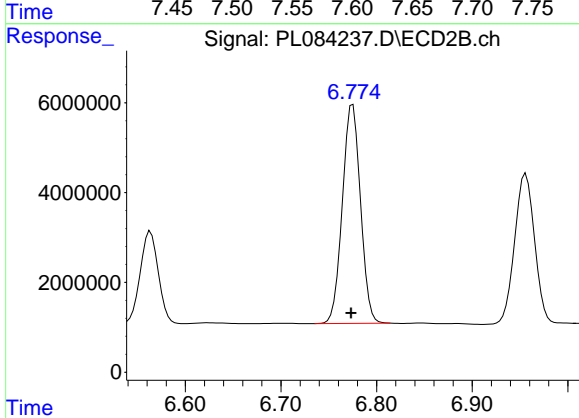
#21 Endrin ketone

R.T.: 7.601 min
 Delta R.T.: 0.010 min
 Response: 81584215
 Conc: 46.55 ng/ml

Instrument :
 ECD_L
 ClientSampleId :
 B-P32BMSD

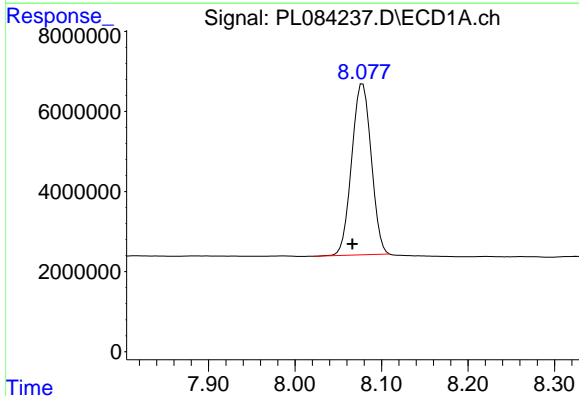
Manual Integrations
 APPROVED

Reviewed By :Abdul Mirza 07/27/2023
 Supervised By :Ankita Jodhani 07/27/2023



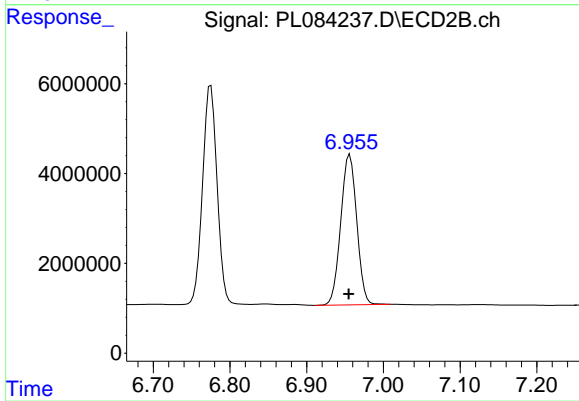
#21 Endrin ketone

R.T.: 6.775 min
 Delta R.T.: 0.002 min
 Response: 64473614
 Conc: 49.90 ng/ml



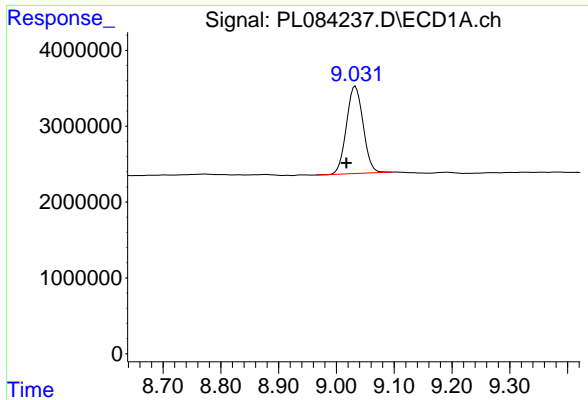
#22 Mirex

R.T.: 8.078 min
 Delta R.T.: 0.012 min
 Response: 67129552
 Conc: 46.91 ng/ml



#22 Mirex

R.T.: 6.956 min
 Delta R.T.: 0.001 min
 Response: 48703562
 Conc: 47.72 ng/ml

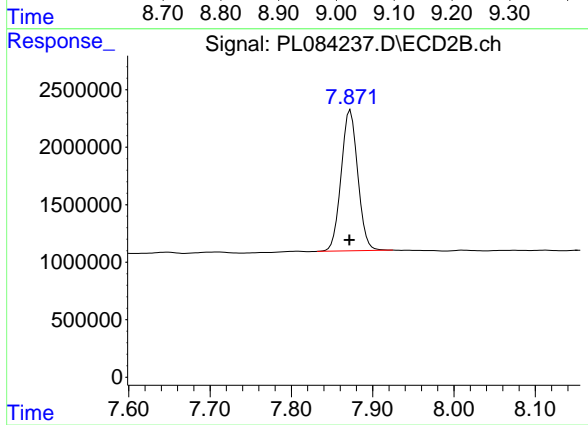


#28 Decachlorobiphenyl
R.T.: 9.033 min
Delta R.T.: 0.015 min
Response: 22989862
Conc: 17.66 ng/ml

Instrument :
ECD_L
ClientSampleId :
B-P32BMSD

Manual Integrations
APPROVED

Reviewed By :Abdul Mirza 07/27/2023
Supervised By :Ankita Jodhani 07/27/2023



#28 Decachlorobiphenyl
R.T.: 7.873 min
Delta R.T.: 0.001 min
Response: 17377323
Conc: 15.64 ng/ml