

Data Path : Z:\pestpcbsrv\HPCHEM1\ECD\_L\Data\PL072623\  
 Data File : PL084241.D  
 Signal(s) : Signal #1: ECD1A.ch Signal #2: ECD2B.ch  
 Acq On : 26 Jul 2023 18:43  
 Operator : AR\AJ  
 Sample : 03742-07  
 Misc :  
 ALS Vial : 23 Sample Multiplier: 1

**Instrument :**  
 ECD\_L  
**ClientSampleId :**  
 DUP-03

**Manual Integrations**  
**APPROVED**

Reviewed By :Abdul Mirza 07/27/2023  
 Supervised By :Ankita Jodhani 07/27/2023

Integration File signal 1: autoint1.e  
 Integration File signal 2: autoint2.e  
 Quant Time: Jul 26 21:36:29 2023  
 Quant Method : Z:\pestpcbsrv\HPCHEM1\ECD\_L\methods\PL071223.M  
 Quant Title : GC Extractables  
 QLast Update : Fri Jul 14 00:03:54 2023  
 Response via : Initial Calibration  
 Integrator: ChemStation

Volume Inj. : 1 µl  
 Signal #1 Phase : ZB-MR2 Signal #2 Phase: ZB-MR1  
 Signal #1 Info : 30M x 0.32mm x0.2 Signal #2 Info : 30M x 0.32mm x0.5µm

Compound	RT#1	RT#2	Resp#1	Resp#2	ng/ml	ng/ml
-----						
System Monitoring Compounds						
1) SA Tetrachlo...	3.476	2.686	30388913	15155089	15.195	13.646m
28) SA Decachlor...	9.024	7.869	13619911	10396151	10.464	9.356
Target Compounds						
10) B gamma-Chl...	5.890	4.902	4756293	2015975	1.842	1.513m
11) B alpha-Chl...	5.972	4.964	8068936	3514802	3.174	2.609m
12) B 4,4'-DDE	6.146	5.163	4199231	1383398	2.087m	1.126m#
13) MA Dieldrin	6.291	5.289	1283882	910860	0.537m	0.699 #
16) A 4,4'-DDD	6.664	5.722	2373642	657145	1.616m	0.685 #
-----						

(f)=RT Delta > 1/2 Window (#)=Amounts differ by > 25% (m)=manual int.

Data Path : Z:\pestpcbsrv\HPCHEM1\ECD\_L\Data\PL072623\  
 Data File : PL084241.D  
 Signal(s) : Signal #1: ECD1A.ch Signal #2: ECD2B.ch  
 Acq On : 26 Jul 2023 18:43  
 Operator : AR\AJ  
 Sample : 03742-07  
 Misc :  
 ALS Vial : 23 Sample Multiplier: 1

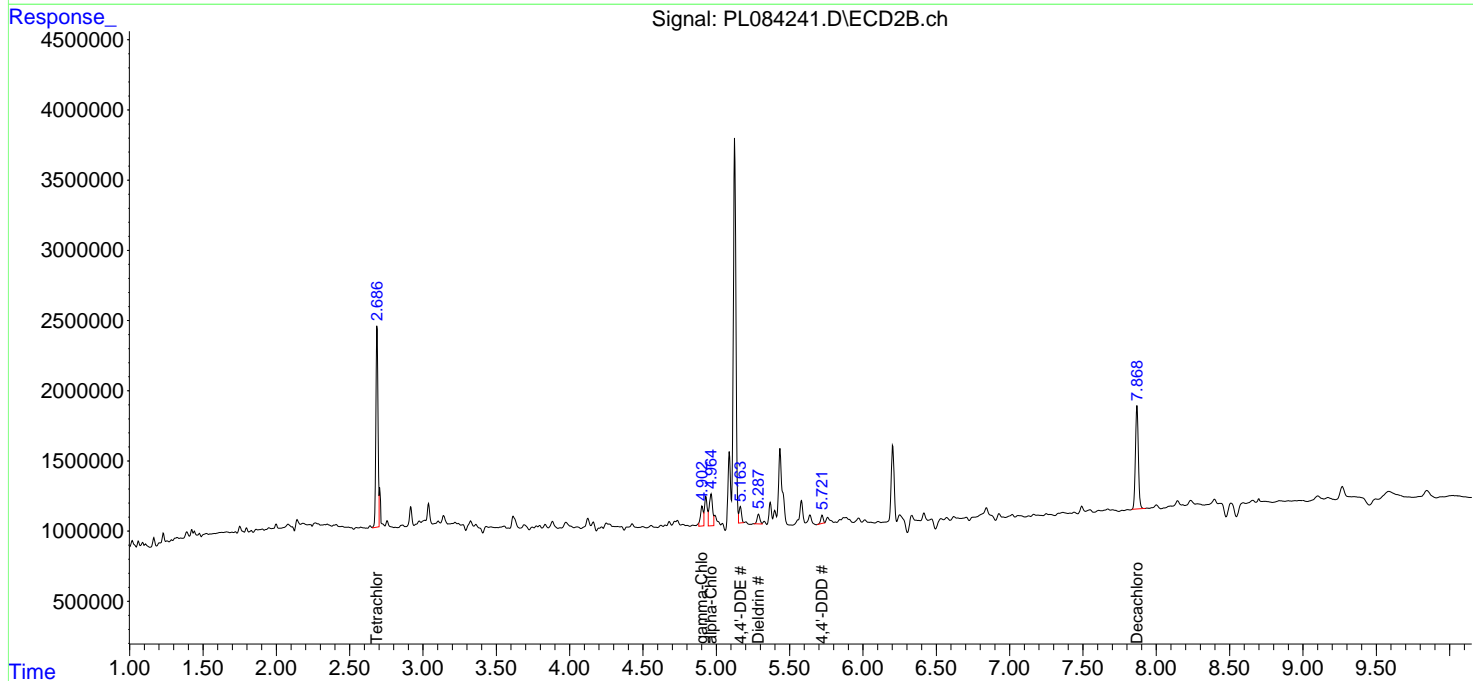
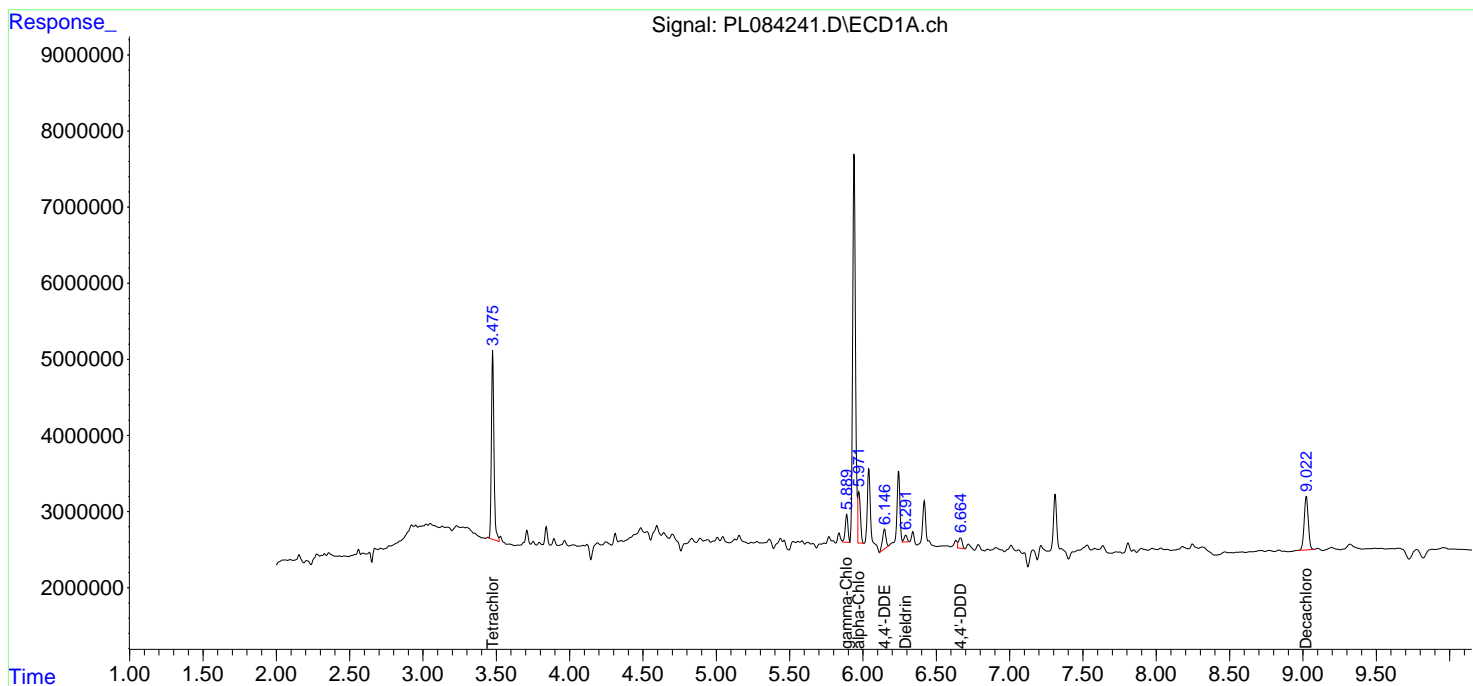
**Instrument :**  
 ECD\_L  
**ClientSampleId :**  
 DUP-03

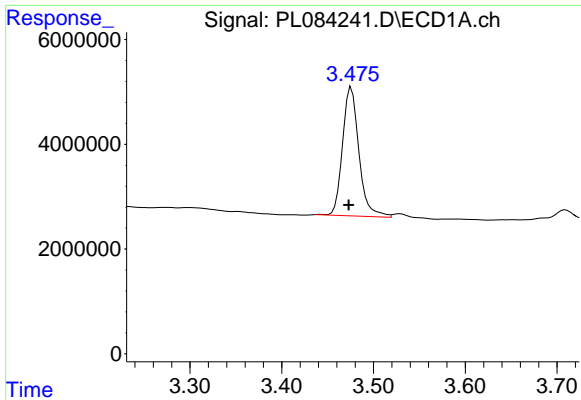
**Manual Integrations**  
**APPROVED**

Reviewed By :Abdul Mirza 07/27/2023  
 Supervised By :Ankita Jodhani 07/27/2023

Integration File signal 1: autoint1.e  
 Integration File signal 2: autoint2.e  
 Quant Time: Jul 26 21:36:29 2023  
 Quant Method : Z:\pestpcbsrv\HPCHEM1\ECD\_L\methods\PL071223.M  
 Quant Title : GC Extractables  
 QLast Update : Fri Jul 14 00:03:54 2023  
 Response via : Initial Calibration  
 Integrator: ChemStation

Volume Inj. : 1 µl  
 Signal #1 Phase : ZB-MR2 Signal #2 Phase: ZB-MR1  
 Signal #1 Info : 30M x 0.32mm x0.2 Signal #2 Info : 30M x 0.32mm x0.5µm





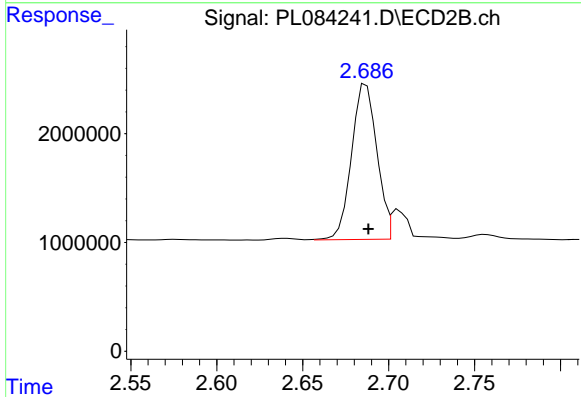
#1 Tetrachloro-m-xylene

R.T.: 3.476 min  
 Delta R.T.: 0.003 min  
 Response: 30388913  
 Conc: 15.20 ng/ml

Instrument :  
 ECD\_L  
 ClientSampleId :  
 DUP-03

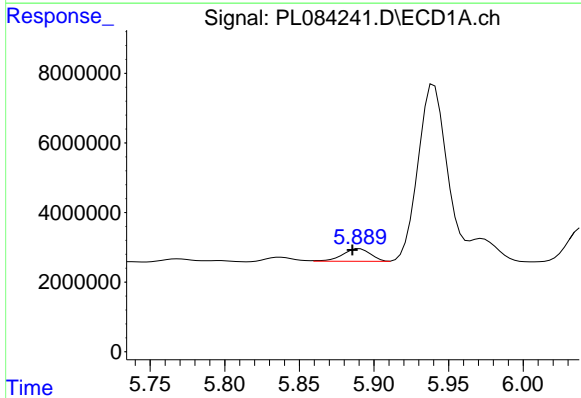
Manual Integrations  
 APPROVED

Reviewed By :Abdul Mirza 07/27/2023  
 Supervised By :Ankita Jodhani 07/27/2023



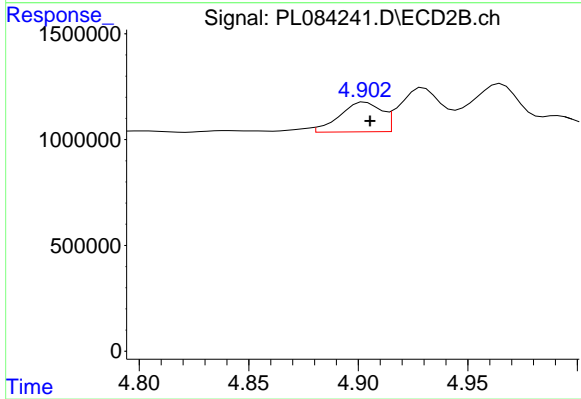
#1 Tetrachloro-m-xylene

R.T.: 2.686 min  
 Delta R.T.: -0.003 min  
 Response: 15155089  
 Conc: 13.65 ng/ml m



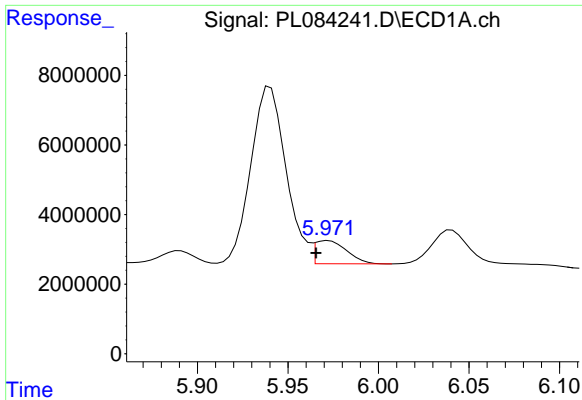
#10 gamma-Chlordane

R.T.: 5.890 min  
 Delta R.T.: 0.005 min  
 Response: 4756293  
 Conc: 1.84 ng/ml



#10 gamma-Chlordane

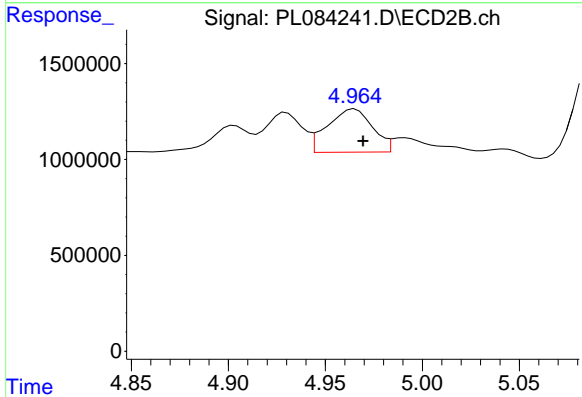
R.T.: 4.902 min  
 Delta R.T.: -0.004 min  
 Response: 2015975  
 Conc: 1.51 ng/ml m



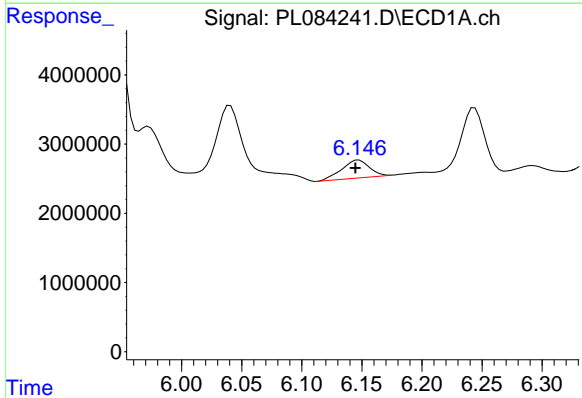
#11 alpha-Chlordane  
 R.T.: 5.972 min  
 Delta R.T.: 0.007 min  
 Response: 8068936  
 Conc: 3.17 ng/ml

Instrument : ECD\_L  
 Client SampleId : DUP-03

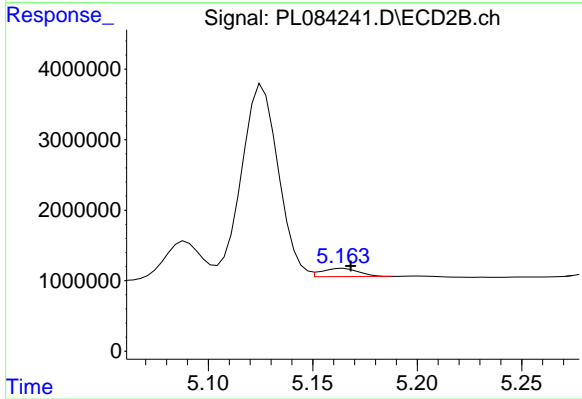
Manual Integrations  
**APPROVED**  
 Reviewed By :Abdul Mirza 07/27/2023  
 Supervised By :Ankita Jodhani 07/27/2023



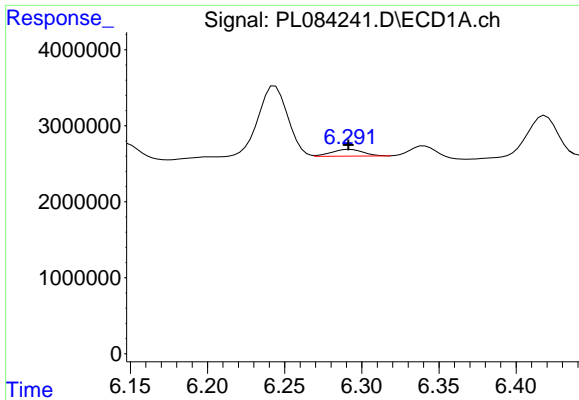
#11 alpha-Chlordane  
 R.T.: 4.964 min  
 Delta R.T.: -0.006 min  
 Response: 3514802  
 Conc: 2.61 ng/ml m



#12 4,4'-DDE  
 R.T.: 6.146 min  
 Delta R.T.: 0.002 min  
 Response: 4199231  
 Conc: 2.09 ng/ml m



#12 4,4'-DDE  
 R.T.: 5.163 min  
 Delta R.T.: -0.005 min  
 Response: 1383398  
 Conc: 1.13 ng/ml m

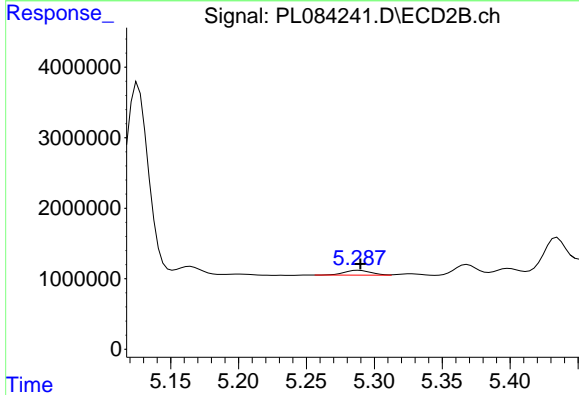


#13 Dieldrin

R.T.: 6.291 min  
 Delta R.T.: 0.000 min  
 Response: 1283882  
 Conc: 0.54 ng/ml

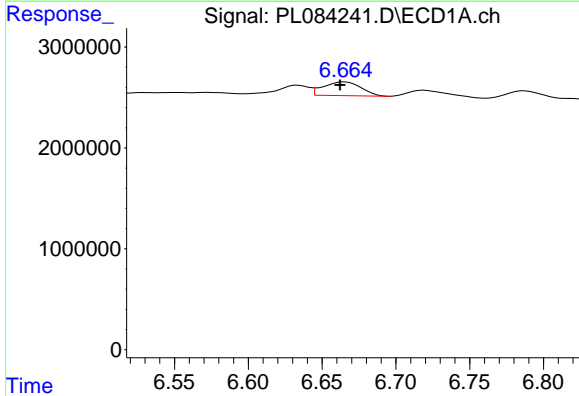
Instrument : ECD\_L  
 ClientSampleId : DUP-03

**Manual Integrations**  
**APPROVED**  
 Reviewed By :Abdul Mirza 07/27/2023  
 Supervised By :Ankita Jodhani 07/27/2023



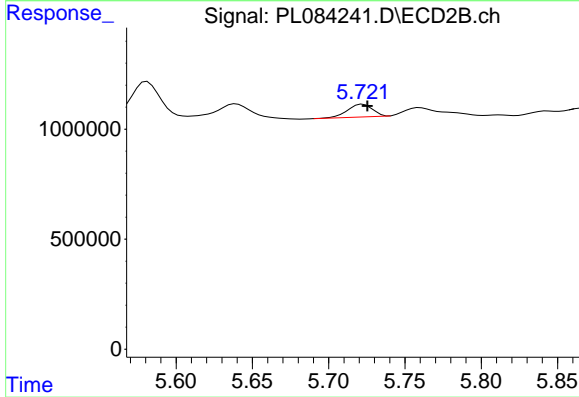
#13 Dieldrin

R.T.: 5.289 min  
 Delta R.T.: -0.001 min  
 Response: 910860  
 Conc: 0.70 ng/ml



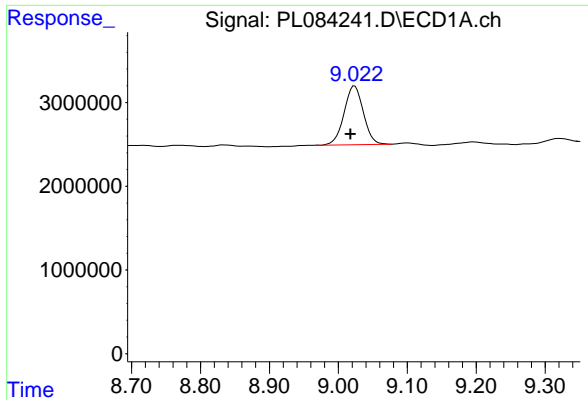
#16 4,4'-DDD

R.T.: 6.664 min  
 Delta R.T.: 0.002 min  
 Response: 2373642  
 Conc: 1.62 ng/ml m



#16 4,4'-DDD

R.T.: 5.722 min  
 Delta R.T.: -0.003 min  
 Response: 657145  
 Conc: 0.68 ng/ml



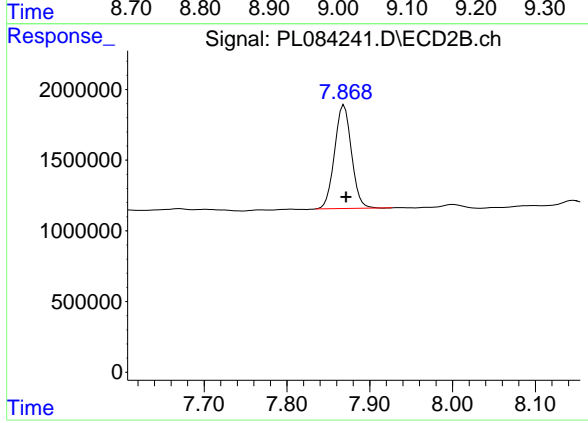
#28 Decachlorobiphenyl

R.T.: 9.024 min  
 Delta R.T.: 0.006 min  
 Response: 13619911  
 Conc: 10.46 ng/ml

Instrument :  
 ECD\_L  
 ClientSampleId :  
 DUP-03

Manual Integrations  
 APPROVED

Reviewed By :Abdul Mirza 07/27/2023  
 Supervised By :Ankita Jodhani 07/27/2023



#28 Decachlorobiphenyl

R.T.: 7.869 min  
 Delta R.T.: -0.003 min  
 Response: 10396151  
 Conc: 9.36 ng/ml