

Data Path : Z:\pestpcbsrv\HPCHEM1\ECD_L\Data\PL072623\
 Data File : PL084246.D
 Signal(s) : Signal #1: ECD1A.ch Signal #2: ECD2B.ch
 Acq On : 26 Jul 2023 19:52
 Operator : AR\AJ
 Sample : 03770-10
 Misc :
 ALS Vial : 28 Sample Multiplier: 1

Instrument :
 ECD_L
 ClientSampleId :
 HOWE-2-LP

Integration File signal 1: autoint1.e
 Integration File signal 2: autoint2.e
 Quant Time: Jul 26 21:38:55 2023
 Quant Method : Z:\pestpcbsrv\HPCHEM1\ECD_L\methods\PL071223.M
 Quant Title : GC Extractables
 QLast Update : Fri Jul 14 00:03:54 2023
 Response via : Initial Calibration
 Integrator: ChemStation

Volume Inj. : 1 µl
 Signal #1 Phase : ZB-MR2 Signal #2 Phase: ZB-MR1
 Signal #1 Info : 30M x 0.32mm x0.2 Signal #2 Info : 30M x 0.32mm x0.5µm

Compound	RT#1	RT#2	Resp#1	Resp#2	ng/ml	ng/ml

System Monitoring Compounds						
1) SA Tetrachlo...	3.476	2.687	17849396	9074155	8.925	8.171
28) SA Decachlor...	9.024	7.869	18071853	12875417	13.884	11.588

Target Compounds

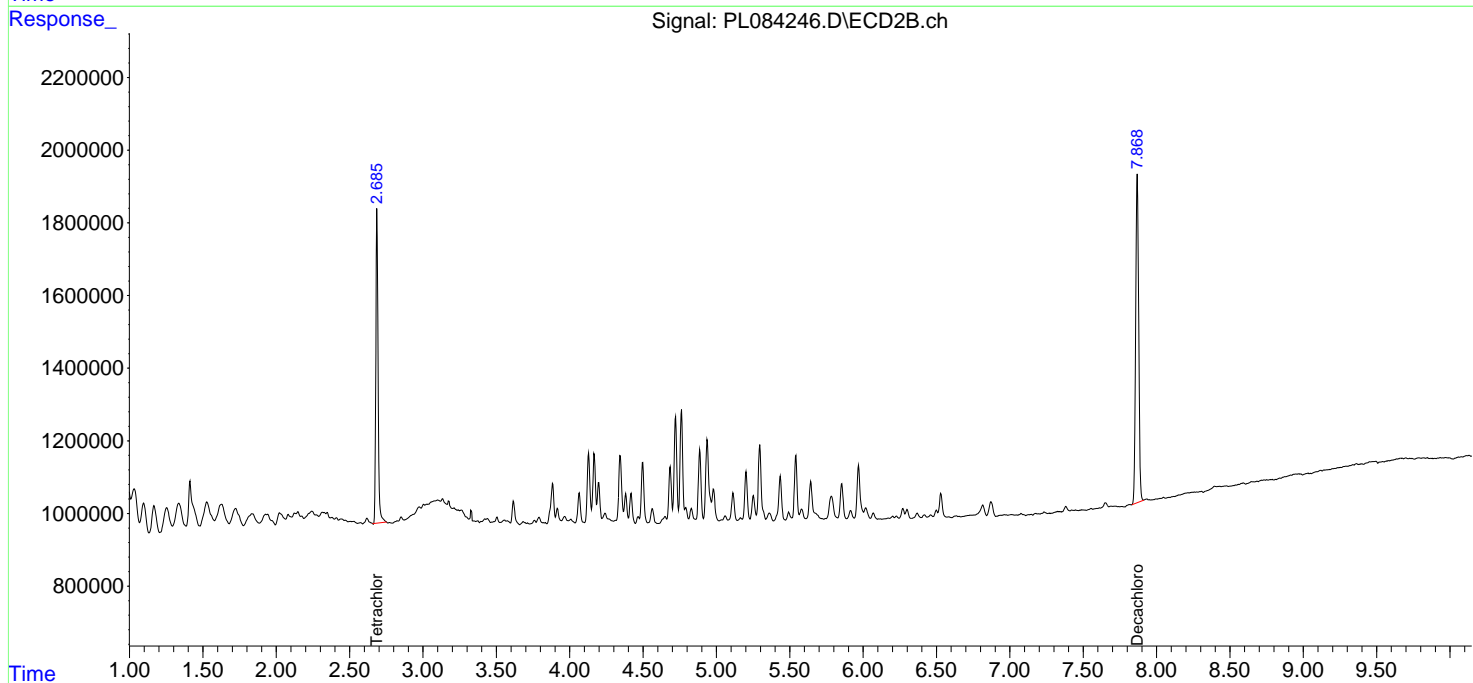
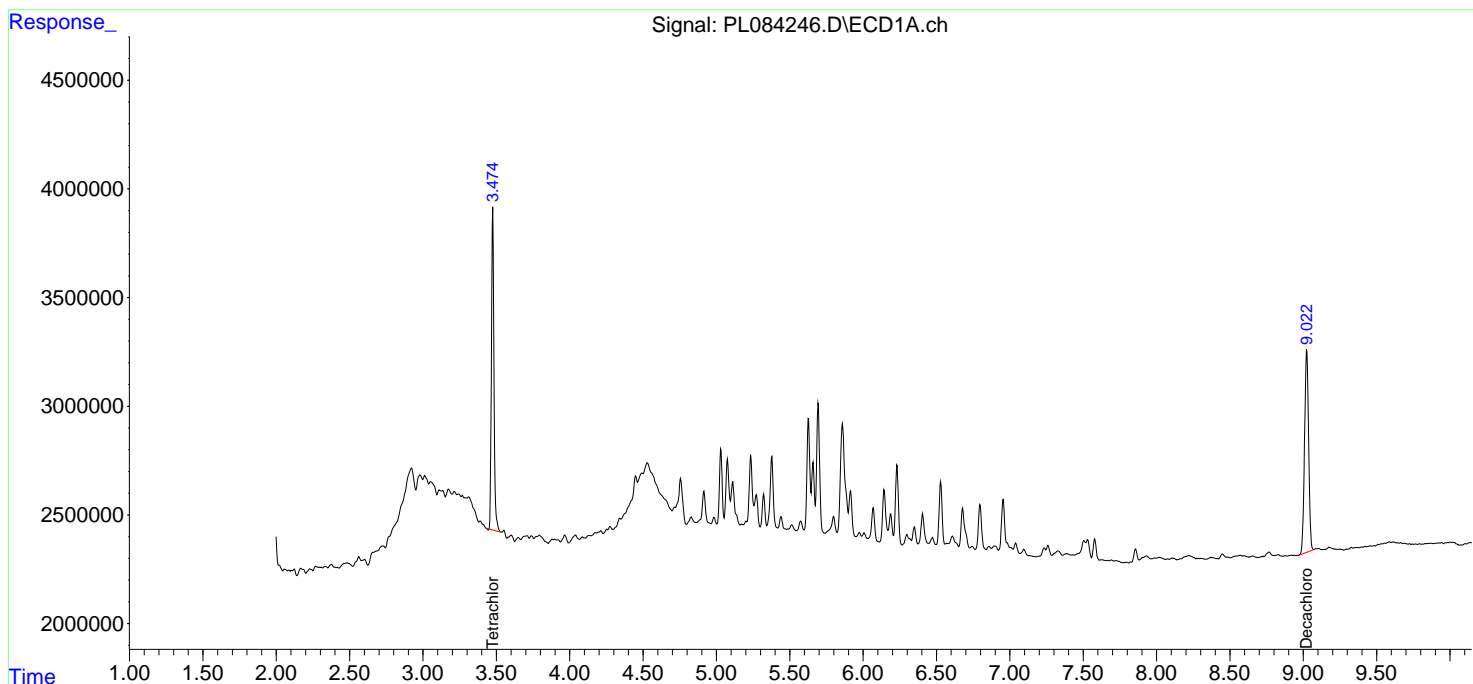
(f)=RT Delta > 1/2 Window (#)=Amounts differ by > 25% (m)=manual int.

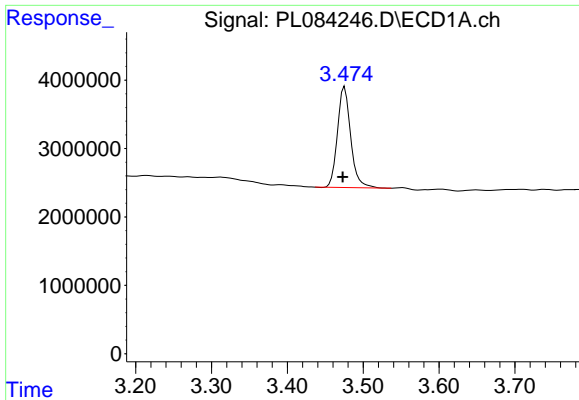
Data Path : Z:\pestpcbsrv\HPCHEM1\ECD_L\Data\PL072623\
 Data File : PL084246.D
 Signal(s) : Signal #1: ECD1A.ch Signal #2: ECD2B.ch
 Acq On : 26 Jul 2023 19:52
 Operator : AR\AJ
 Sample : 03770-10
 Misc :
 ALS Vial : 28 Sample Multiplier: 1

Instrument :
 ECD_L
 ClientSampleID :
 HOWE-2-LP

Integration File signal 1: autoint1.e
 Integration File signal 2: autoint2.e
 Quant Time: Jul 26 21:38:55 2023
 Quant Method : Z:\pestpcbsrv\HPCHEM1\ECD_L\methods\PL071223.M
 Quant Title : GC Extractables
 QLast Update : Fri Jul 14 00:03:54 2023
 Response via : Initial Calibration
 Integrator: ChemStation

Volume Inj. : 1 µl
 Signal #1 Phase : ZB-MR2 Signal #2 Phase: ZB-MR1
 Signal #1 Info : 30M x 0.32mm x0.2 Signal #2 Info : 30M x 0.32mm x0.5µm

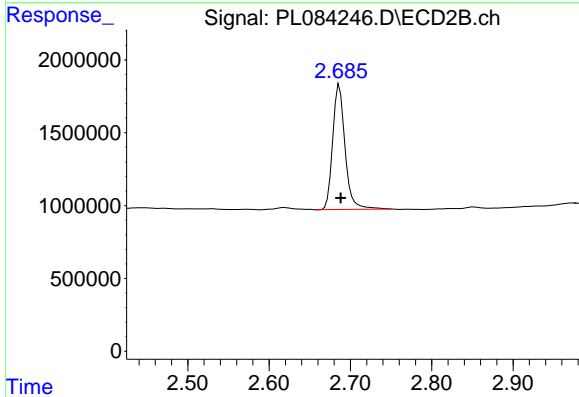




#1 Tetrachloro-m-xylene

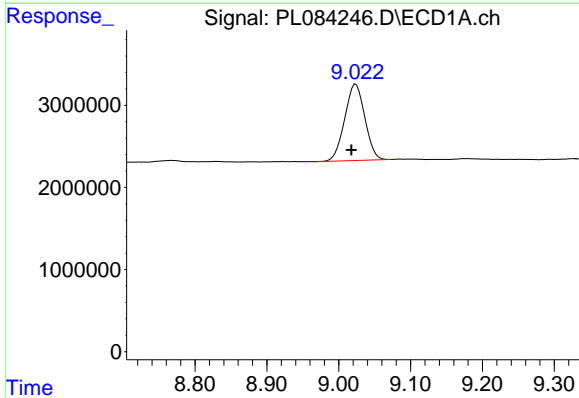
R.T.: 3.476 min
 Delta R.T.: 0.003 min
 Response: 17849396
 Conc: 8.93 ng/ml

Instrument :
 ECD_L
 ClientSampleId :
 HOWE-2-LP



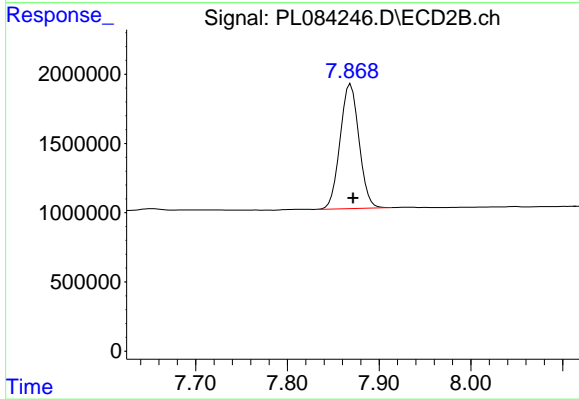
#1 Tetrachloro-m-xylene

R.T.: 2.687 min
 Delta R.T.: -0.002 min
 Response: 9074155
 Conc: 8.17 ng/ml



#28 Decachlorobiphenyl

R.T.: 9.024 min
 Delta R.T.: 0.006 min
 Response: 18071853
 Conc: 13.88 ng/ml



#28 Decachlorobiphenyl

R.T.: 7.869 min
 Delta R.T.: -0.003 min
 Response: 12875417
 Conc: 11.59 ng/ml