

Data Path : Z:\pestpcbsrv\HPCHEM1\ECD\_L\Data\PL072623\  
 Data File : PL084257.D  
 Signal(s) : Signal #1: ECD1A.ch Signal #2: ECD2B.ch  
 Acq On : 27 Jul 2023 00:48  
 Operator : AR\AJ  
 Sample : 03769-08MS  
 Misc :  
 ALS Vial : 37 Sample Multiplier: 1

Instrument :  
 ECD\_L  
 ClientSampleId :  
 B-P39BMS

Integration File signal 1: autoint1.e  
 Integration File signal 2: autoint2.e  
 Quant Time: Jul 27 03:15:17 2023  
 Quant Method : Z:\pestpcbsrv\HPCHEM1\ECD\_L\methods\PL071223.M  
 Quant Title : GC Extractables  
 QLast Update : Fri Jul 14 00:03:54 2023  
 Response via : Initial Calibration  
 Integrator: ChemStation

Volume Inj. : 1 µl  
 Signal #1 Phase : ZB-MR2 Signal #2 Phase: ZB-MR1  
 Signal #1 Info : 30M x 0.32mm x0.2 Signal #2 Info : 30M x 0.32mm x0.5µm

Compound	RT#1	RT#2	Resp#1	Resp#2	ng/ml	ng/ml
-----						
System Monitoring Compounds						
1) SA Tetrachlo...	3.476	2.688	38945626	18260478	19.474	16.442
28) SA Decachlor...	9.023	7.868	27757955	21952634	21.325	19.757
Target Compounds						
2) A alpha-BHC	3.934	3.193	138.3E6	71903968	47.208	44.720
3) MA gamma-BHC...	4.268	3.524	129.3E6	68254933	45.768	44.884
4) MA Heptachlor	4.860	3.865	152.5E6	68046029	56.100	57.740
5) MB Aldrin	5.202	4.145	137.7E6	67925832	48.074	45.048
6) B beta-BHC	4.467	3.825	60431360	30867300	50.366	46.764
7) B delta-BHC	4.713	4.054	102.6E6	50237938	38.494	33.212
8) B Heptachlo...	5.632	4.651	129.8E6	61721343	48.616	48.063
9) A Endosulfan I	6.018	5.021	111.0E6	58056243	46.866	47.334
10) B gamma-Chl...	5.889	4.904	122.1E6	64063911	47.295	48.090
11) B alpha-Chl...	5.969	4.968	119.0E6	63564896	46.813	47.185
12) B 4,4'-DDE	6.148	5.166	101.7E6	59839047	50.529	48.715
13) MA Dieldrin	6.294	5.288	108.2E6	61698079	45.280	47.374
14) MA Endrin	6.524	5.563	87830783	55133878	46.119	50.156
15) B Endosulfa...	6.744	5.861	80648236	52611597	43.028	45.775
16) A 4,4'-DDD	6.666	5.724	77437998	49916749	52.732	52.032
17) MA 4,4'-DDT	6.982	5.976	76748684	51655620	48.124	56.715
18) B Endrin al...	6.875	6.042	68685130	43525123	46.881	48.418
19) B Endosulfa...	7.111	6.267	77447990	50355085	44.801	45.818
20) A Methoxychlor	7.463	6.560	38296384	28591208	48.959	59.659
21) B Endrin ke...	7.595	6.772	80989159	64643191	46.214	50.030
22) Mirex	8.070	6.952	65894584	49655841	46.049	48.650
-----						

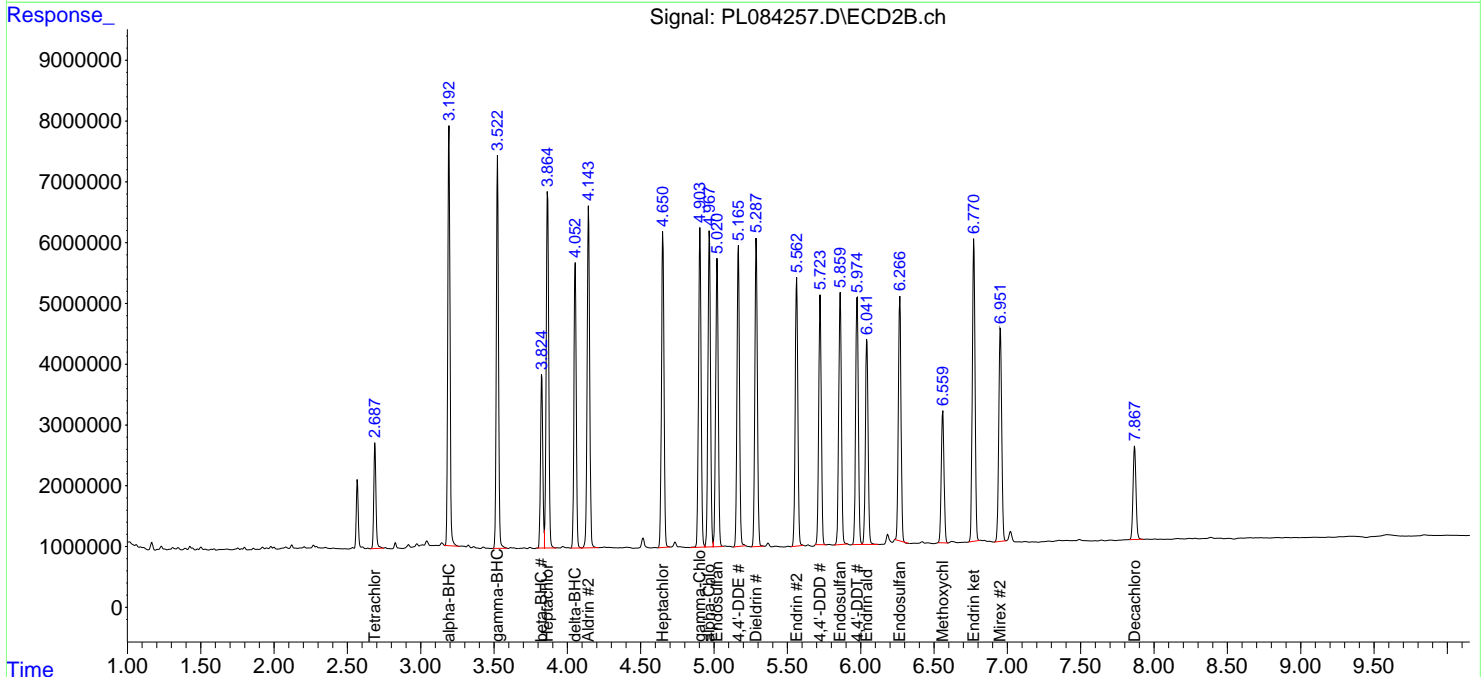
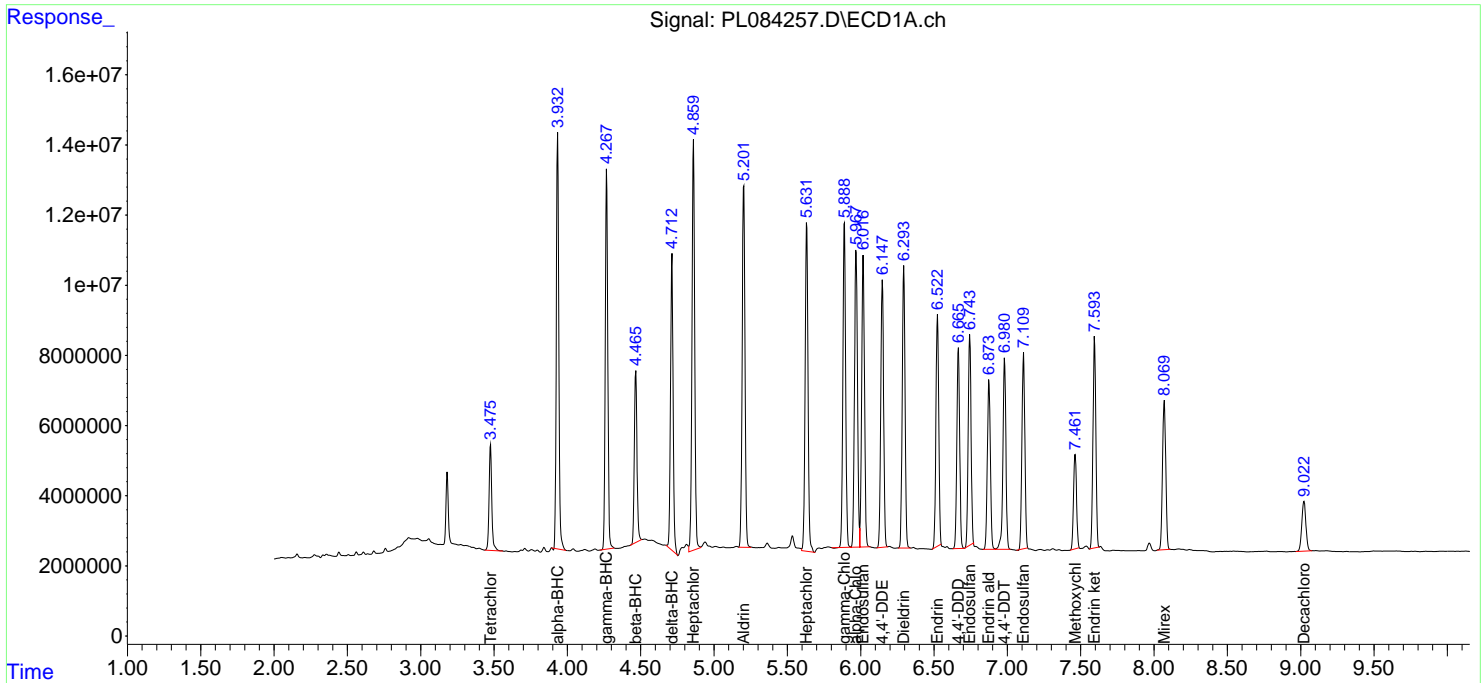
(f)=RT Delta > 1/2 Window (#)=Amounts differ by > 25% (m)=manual int.

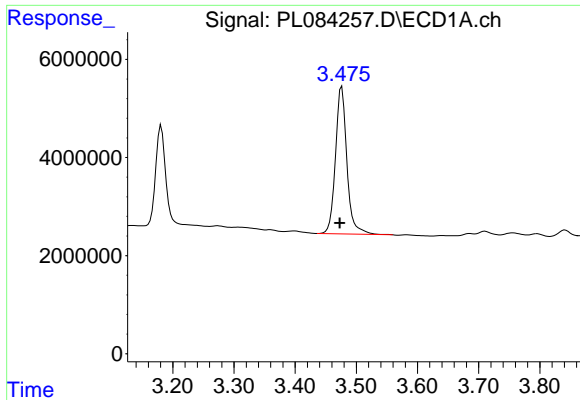
Data Path : Z:\pestpcbsrv\HPCHEM1\ECD\_L\Data\PL072623\  
 Data File : PL084257.D  
 Signal(s) : Signal #1: ECD1A.ch Signal #2: ECD2B.ch  
 Acq On : 27 Jul 2023 00:48  
 Operator : AR\AJ  
 Sample : 03769-08MS  
 Misc :  
 ALS Vial : 37 Sample Multiplier: 1

Instrument :  
 ECD\_L  
 ClientSampleId :  
 B-P39BMS

Integration File signal 1: autoint1.e  
 Integration File signal 2: autoint2.e  
 Quant Time: Jul 27 03:15:17 2023  
 Quant Method : Z:\pestpcbsrv\HPCHEM1\ECD\_L\methods\PL071223.M  
 Quant Title : GC Extractables  
 QLast Update : Fri Jul 14 00:03:54 2023  
 Response via : Initial Calibration  
 Integrator: ChemStation

Volume Inj. : 1 µl  
 Signal #1 Phase : ZB-MR2 Signal #2 Phase: ZB-MR1  
 Signal #1 Info : 30M x 0.32mm x0.2 Signal #2 Info : 30M x 0.32mm x0.5µm

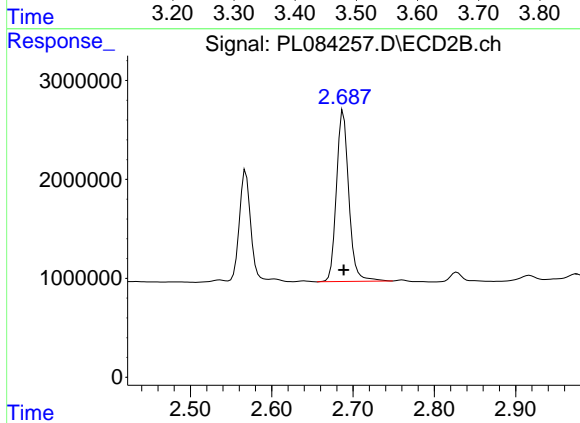




#1 Tetrachloro-m-xylene

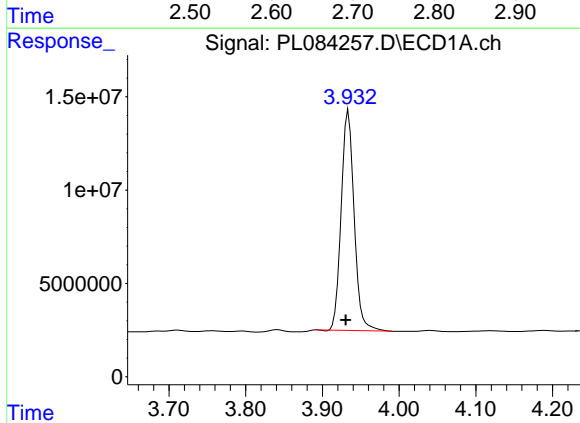
R.T.: 3.476 min  
 Delta R.T.: 0.003 min  
 Response: 38945626  
 Conc: 19.47 ng/ml

Instrument :  
 ECD\_L  
 ClientSampleId :  
 B-P39BMS



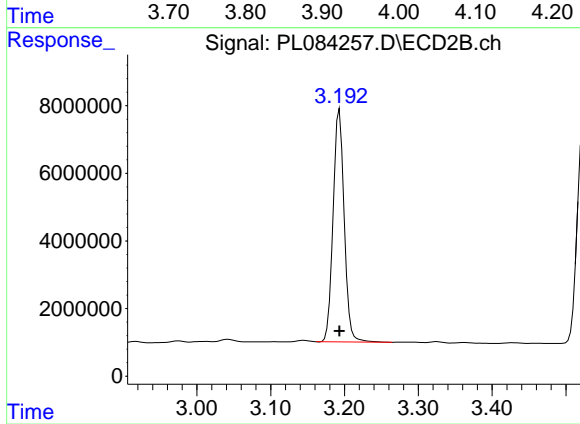
#1 Tetrachloro-m-xylene

R.T.: 2.688 min  
 Delta R.T.: 0.000 min  
 Response: 18260478  
 Conc: 16.44 ng/ml



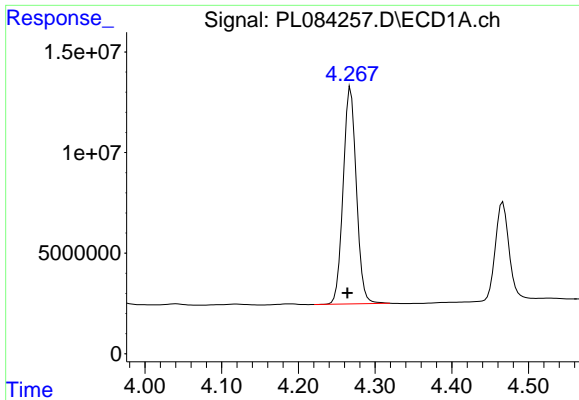
#2 alpha-BHC

R.T.: 3.934 min  
 Delta R.T.: 0.003 min  
 Response: 138311350  
 Conc: 47.21 ng/ml



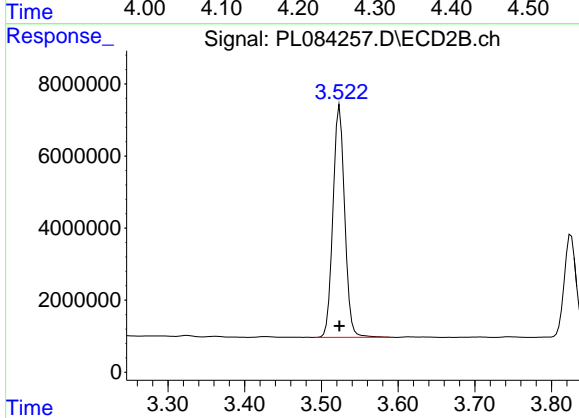
#2 alpha-BHC

R.T.: 3.193 min  
 Delta R.T.: 0.000 min  
 Response: 71903968  
 Conc: 44.72 ng/ml

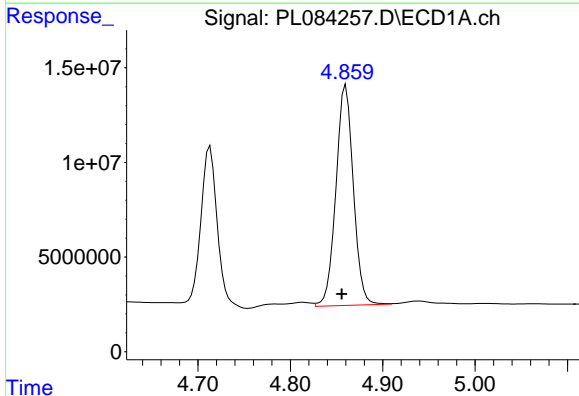


#3 gamma-BHC (Lindane)  
R.T.: 4.268 min  
Delta R.T.: 0.004 min  
Response: 129310292  
Conc: 45.77 ng/ml

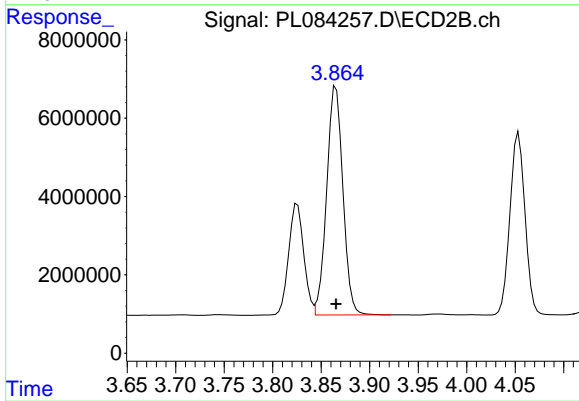
Instrument :  
ECD\_L  
ClientSampleId :  
B-P39BMS



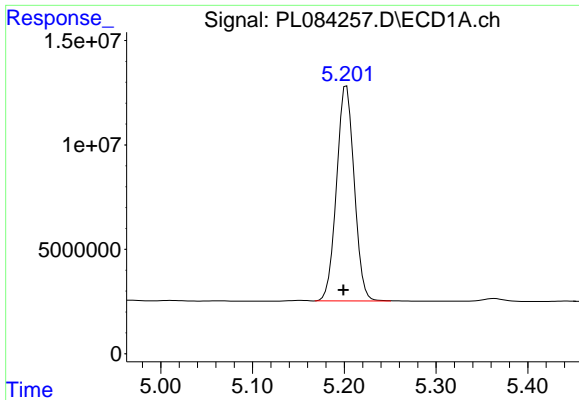
#3 gamma-BHC (Lindane)  
R.T.: 3.524 min  
Delta R.T.: 0.000 min  
Response: 68254933  
Conc: 44.88 ng/ml



#4 Heptachlor  
R.T.: 4.860 min  
Delta R.T.: 0.004 min  
Response: 152456088  
Conc: 56.10 ng/ml

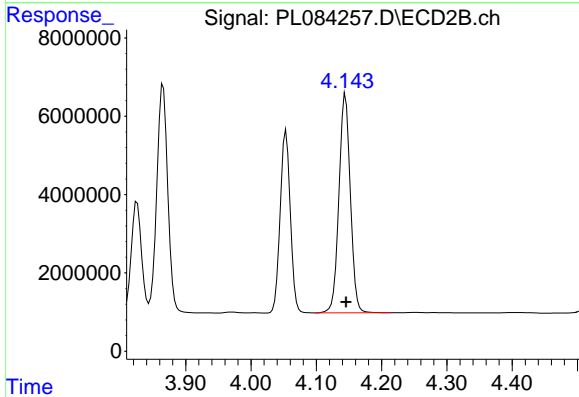


#4 Heptachlor  
R.T.: 3.865 min  
Delta R.T.: 0.000 min  
Response: 68046029  
Conc: 57.74 ng/ml

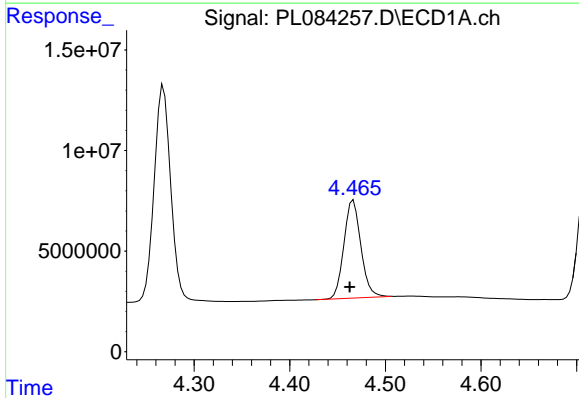


#5 Aldrin  
 R.T.: 5.202 min  
 Delta R.T.: 0.004 min  
 Response: 137692953  
 Conc: 48.07 ng/ml

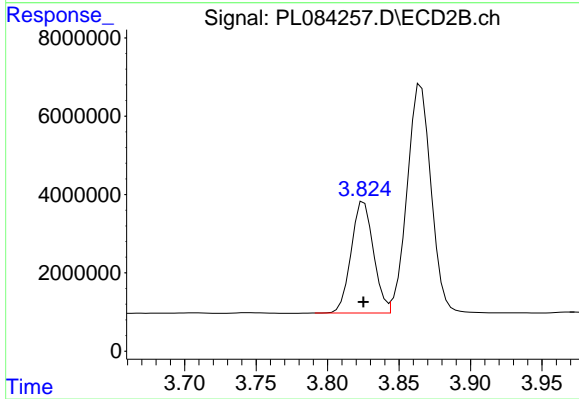
Instrument :  
 ECD\_L  
 ClientSampleId :  
 B-P39BMS



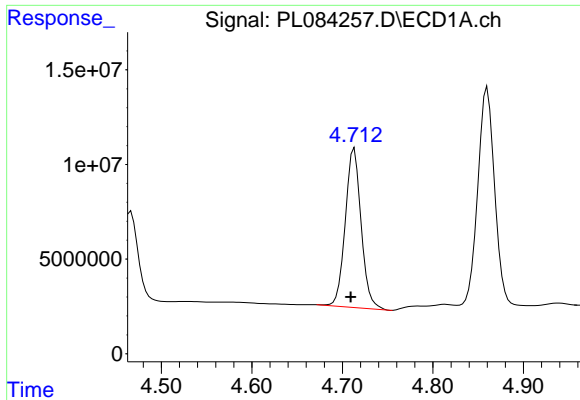
#5 Aldrin  
 R.T.: 4.145 min  
 Delta R.T.: 0.000 min  
 Response: 67925832  
 Conc: 45.05 ng/ml



#6 beta-BHC  
 R.T.: 4.467 min  
 Delta R.T.: 0.004 min  
 Response: 60431360  
 Conc: 50.37 ng/ml



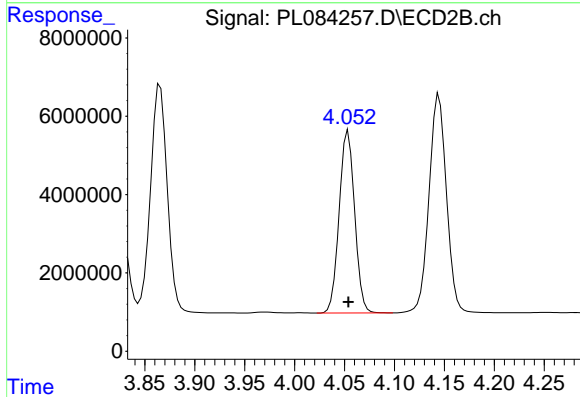
#6 beta-BHC  
 R.T.: 3.825 min  
 Delta R.T.: 0.000 min  
 Response: 30867300  
 Conc: 46.76 ng/ml



#7 delta-BHC

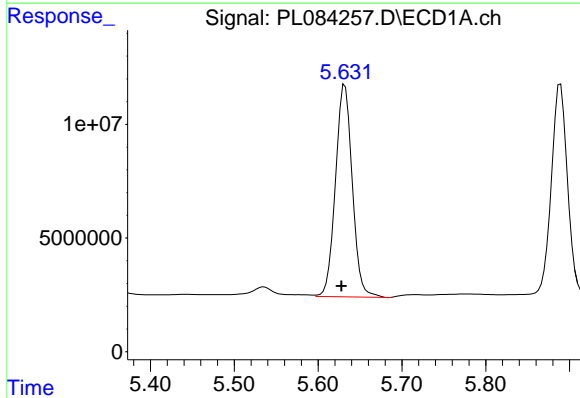
R.T.: 4.713 min  
 Delta R.T.: 0.004 min  
 Response: 102618003  
 Conc: 38.49 ng/ml

Instrument :  
 ECD\_L  
 ClientSampleId :  
 B-P39BMS



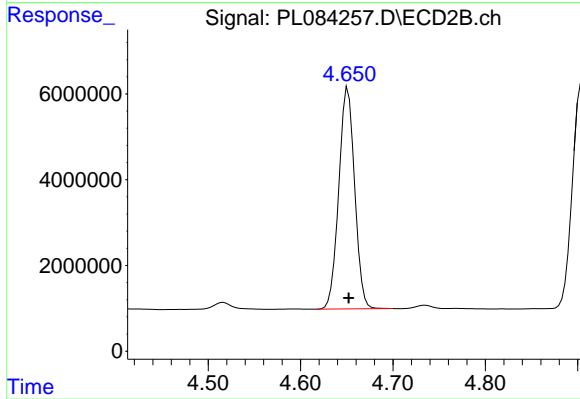
#7 delta-BHC

R.T.: 4.054 min  
 Delta R.T.: 0.000 min  
 Response: 50237938  
 Conc: 33.21 ng/ml



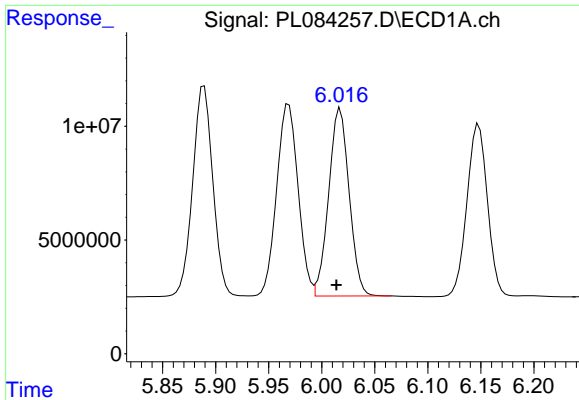
#8 Heptachlor epoxide

R.T.: 5.632 min  
 Delta R.T.: 0.004 min  
 Response: 129784391  
 Conc: 48.62 ng/ml



#8 Heptachlor epoxide

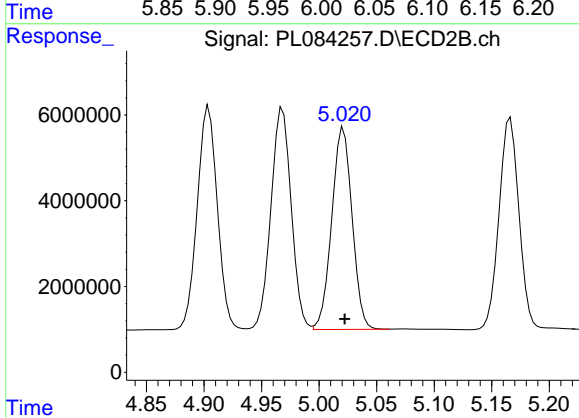
R.T.: 4.651 min  
 Delta R.T.: 0.000 min  
 Response: 61721343  
 Conc: 48.06 ng/ml



#9 Endosulfan I

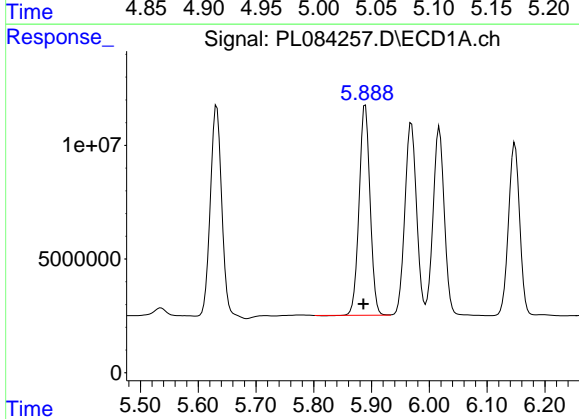
R.T.: 6.018 min  
 Delta R.T.: 0.004 min  
 Response: 110989275  
 Conc: 46.87 ng/ml

Instrument :  
 ECD\_L  
 ClientSampleId :  
 B-P39BMS



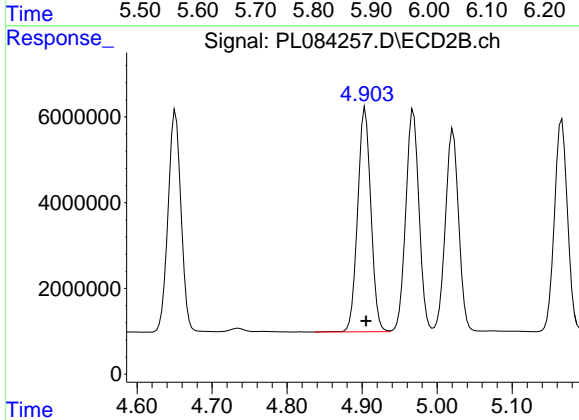
#9 Endosulfan I

R.T.: 5.021 min  
 Delta R.T.: -0.001 min  
 Response: 58056243  
 Conc: 47.33 ng/ml



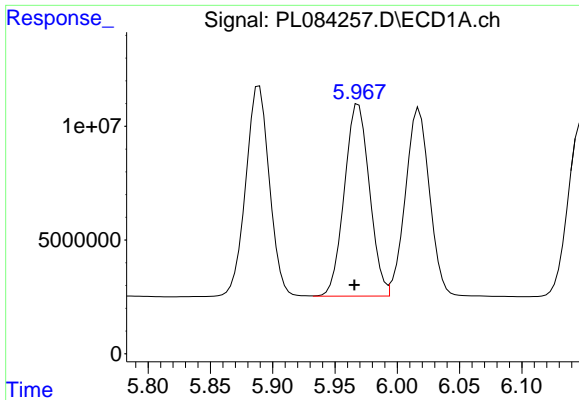
#10 gamma-Chlordane

R.T.: 5.889 min  
 Delta R.T.: 0.004 min  
 Response: 122112129  
 Conc: 47.29 ng/ml



#10 gamma-Chlordane

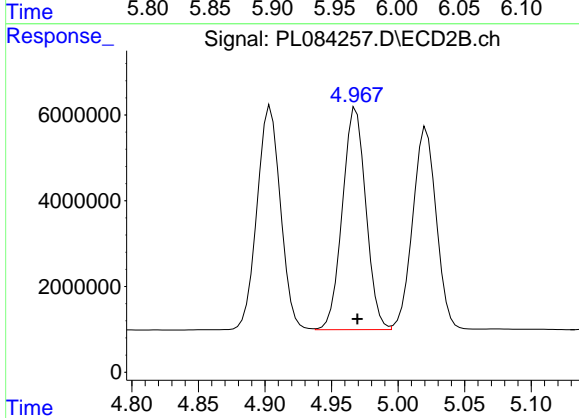
R.T.: 4.904 min  
 Delta R.T.: -0.001 min  
 Response: 64063911  
 Conc: 48.09 ng/ml



#11 alpha-Chlordane

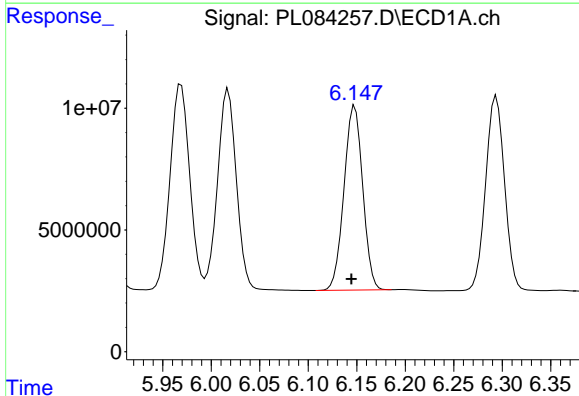
R.T.: 5.969 min  
 Delta R.T.: 0.003 min  
 Response: 119000371  
 Conc: 46.81 ng/ml

Instrument :  
 ECD\_L  
 ClientSampleId :  
 B-P39BMS



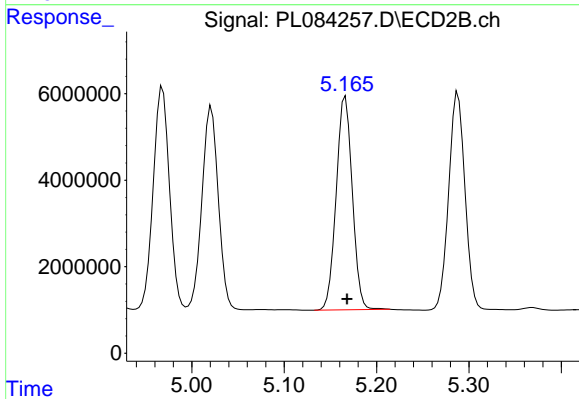
#11 alpha-Chlordane

R.T.: 4.968 min  
 Delta R.T.: -0.001 min  
 Response: 63564896  
 Conc: 47.19 ng/ml



#12 4,4'-DDE

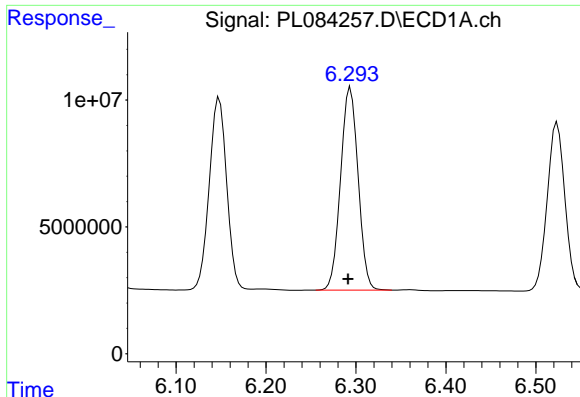
R.T.: 6.148 min  
 Delta R.T.: 0.003 min  
 Response: 101664430  
 Conc: 50.53 ng/ml



#12 4,4'-DDE

R.T.: 5.166 min  
 Delta R.T.: -0.002 min  
 Response: 59839047  
 Conc: 48.71 ng/ml

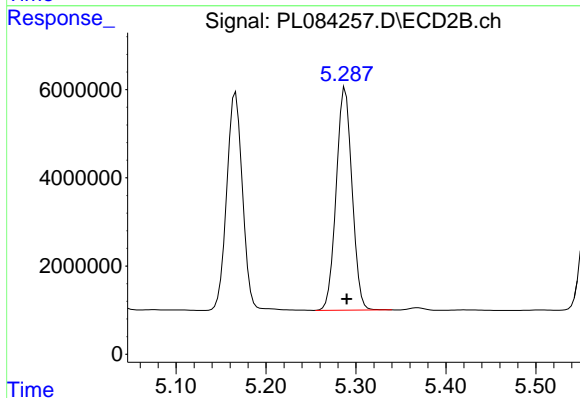




#13 Dieldrin

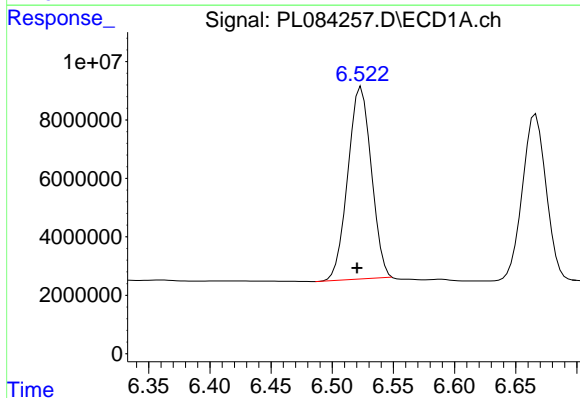
R.T.: 6.294 min  
 Delta R.T.: 0.003 min  
 Response: 108199492  
 Conc: 45.28 ng/ml

Instrument :  
 ECD\_L  
 ClientSampleId :  
 B-P39BMS



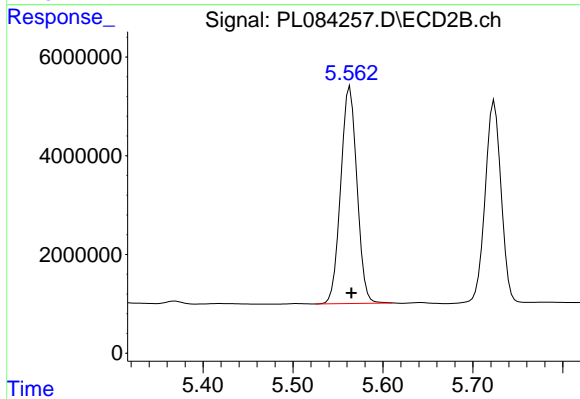
#13 Dieldrin

R.T.: 5.288 min  
 Delta R.T.: -0.002 min  
 Response: 61698079  
 Conc: 47.37 ng/ml



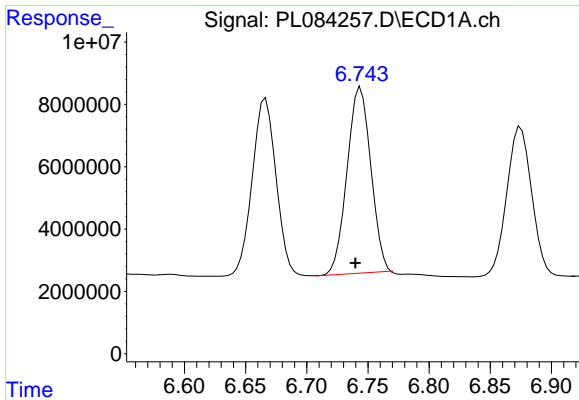
#14 Endrin

R.T.: 6.524 min  
 Delta R.T.: 0.004 min  
 Response: 87830783  
 Conc: 46.12 ng/ml



#14 Endrin

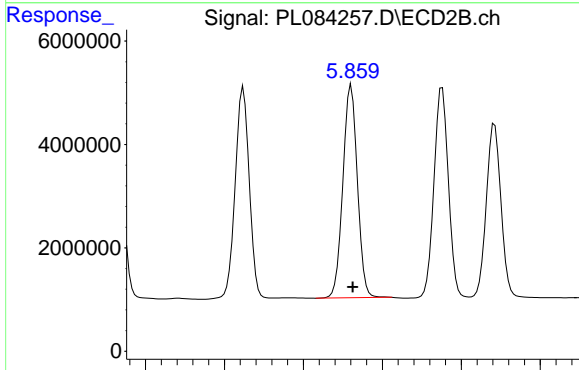
R.T.: 5.563 min  
 Delta R.T.: -0.001 min  
 Response: 55133878  
 Conc: 50.16 ng/ml



#15 Endosulfan II

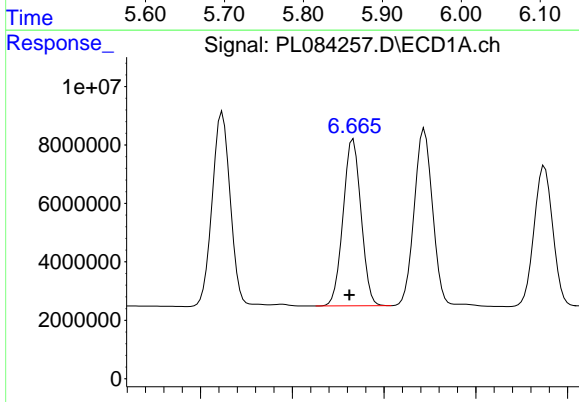
R.T.: 6.744 min  
 Delta R.T.: 0.004 min  
 Response: 80648236  
 Conc: 43.03 ng/ml

Instrument :  
 ECD\_L  
 ClientSampleId :  
 B-P39BMS



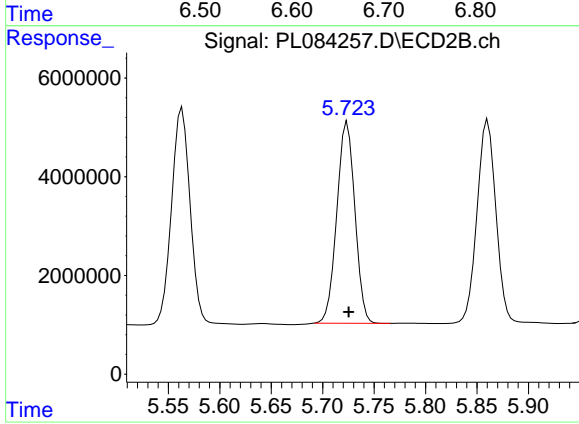
#15 Endosulfan II

R.T.: 5.861 min  
 Delta R.T.: -0.002 min  
 Response: 52611597  
 Conc: 45.78 ng/ml



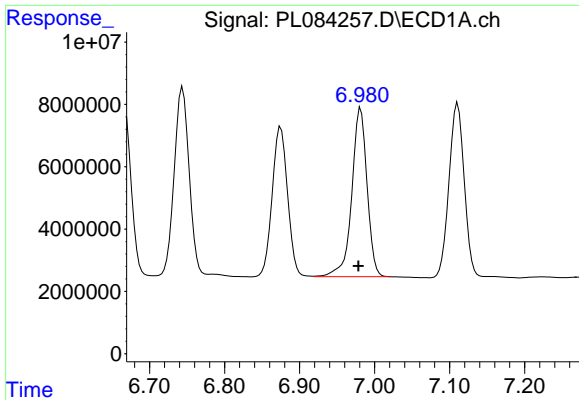
#16 4,4'-DDD

R.T.: 6.666 min  
 Delta R.T.: 0.004 min  
 Response: 77437998  
 Conc: 52.73 ng/ml



#16 4,4'-DDD

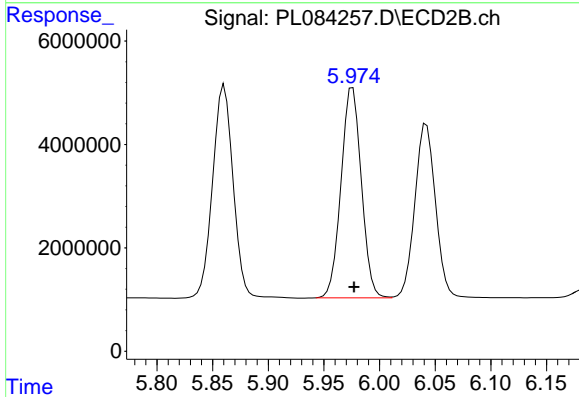
R.T.: 5.724 min  
 Delta R.T.: -0.001 min  
 Response: 49916749  
 Conc: 52.03 ng/ml



#17 4,4'-DDT

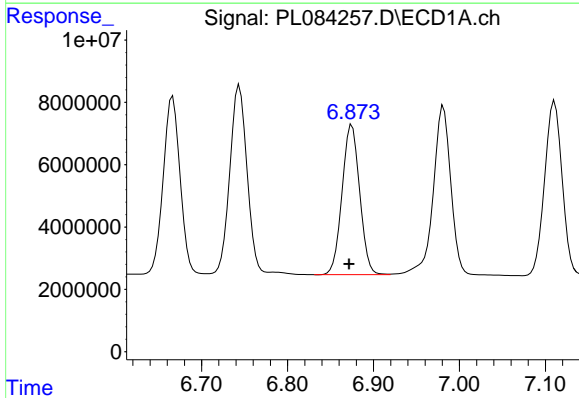
R.T.: 6.982 min  
 Delta R.T.: 0.003 min  
 Response: 76748684  
 Conc: 48.12 ng/ml

Instrument :  
 ECD\_L  
 ClientSampleId :  
 B-P39BMS



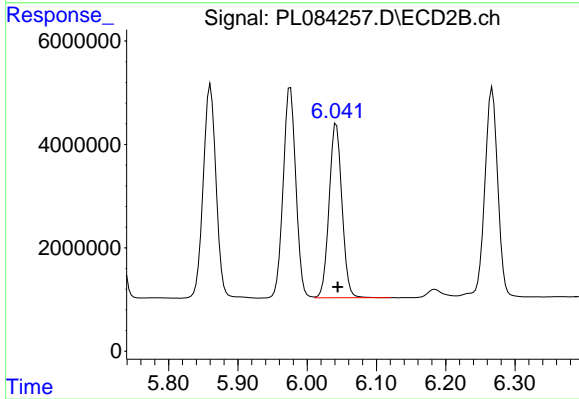
#17 4,4'-DDT

R.T.: 5.976 min  
 Delta R.T.: -0.001 min  
 Response: 51655620  
 Conc: 56.71 ng/ml



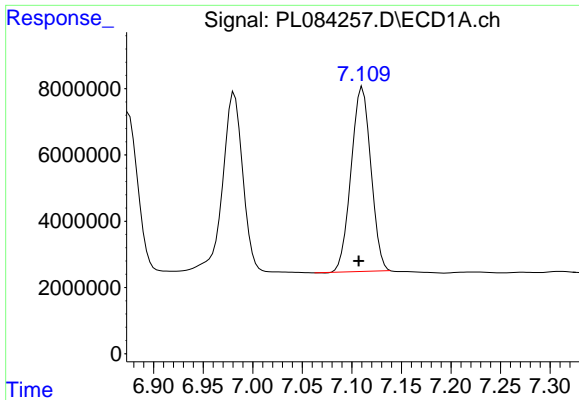
#18 Endrin aldehyde

R.T.: 6.875 min  
 Delta R.T.: 0.003 min  
 Response: 68685130  
 Conc: 46.88 ng/ml



#18 Endrin aldehyde

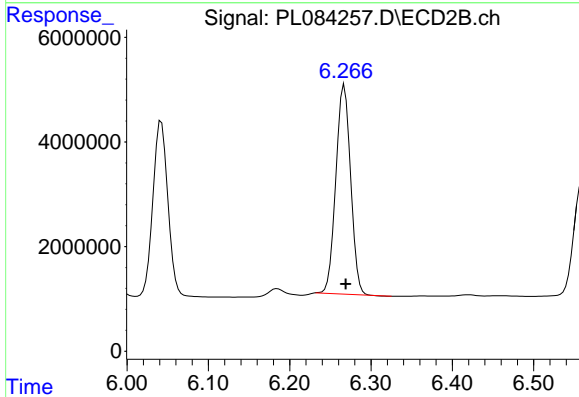
R.T.: 6.042 min  
 Delta R.T.: -0.002 min  
 Response: 43525123  
 Conc: 48.42 ng/ml



#19 Endosulfan Sulfate

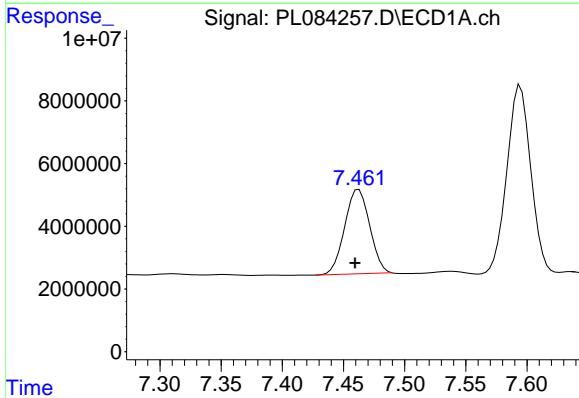
R.T.: 7.111 min  
 Delta R.T.: 0.004 min  
 Response: 77447990  
 Conc: 44.80 ng/ml

Instrument :  
 ECD\_L  
 ClientSampleId :  
 B-P39BMS



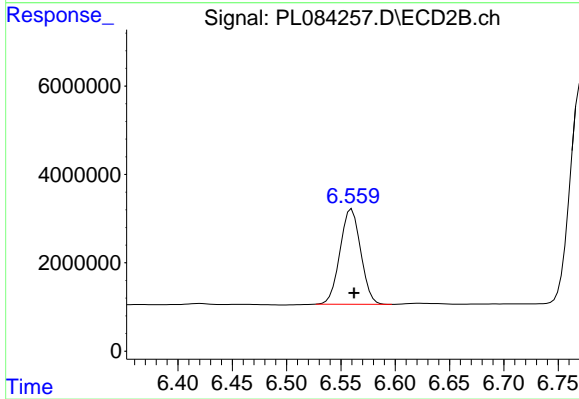
#19 Endosulfan Sulfate

R.T.: 6.267 min  
 Delta R.T.: -0.002 min  
 Response: 50355085  
 Conc: 45.82 ng/ml



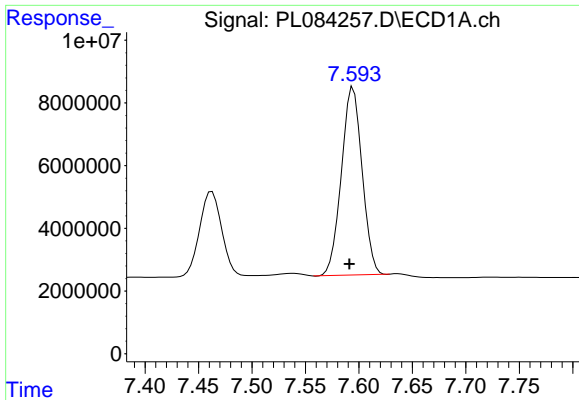
#20 Methoxychlor

R.T.: 7.463 min  
 Delta R.T.: 0.003 min  
 Response: 38296384  
 Conc: 48.96 ng/ml



#20 Methoxychlor

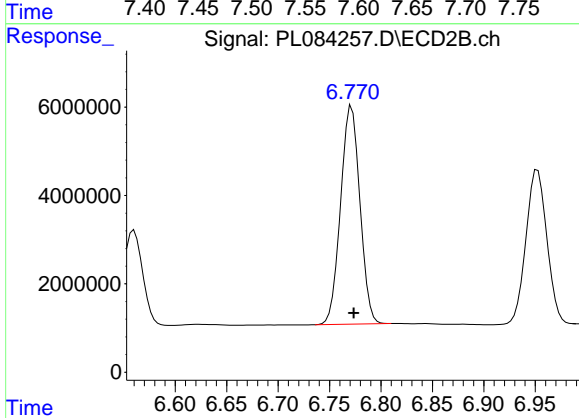
R.T.: 6.560 min  
 Delta R.T.: -0.002 min  
 Response: 28591208  
 Conc: 59.66 ng/ml



#21 Endrin ketone

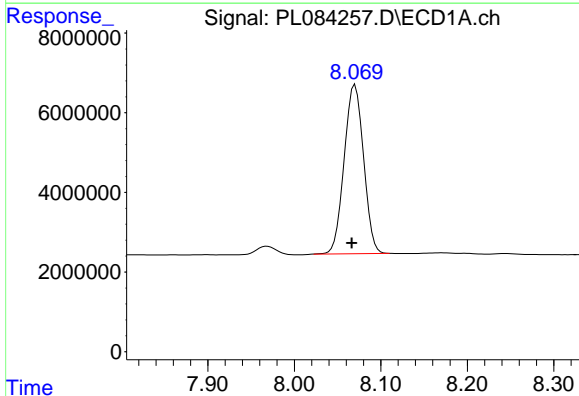
R.T.: 7.595 min  
 Delta R.T.: 0.004 min  
 Response: 80989159  
 Conc: 46.21 ng/ml

Instrument :  
 ECD\_L  
 ClientSampleId :  
 B-P39BMS



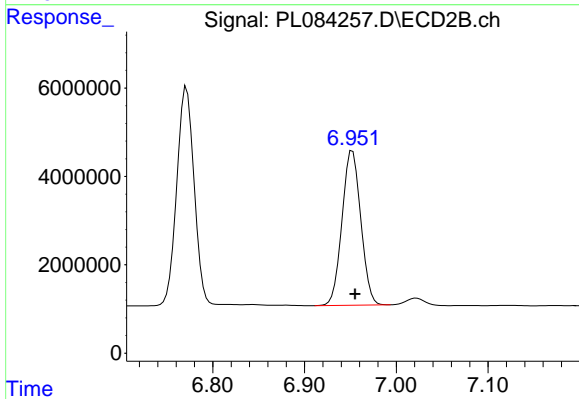
#21 Endrin ketone

R.T.: 6.772 min  
 Delta R.T.: -0.002 min  
 Response: 64643191  
 Conc: 50.03 ng/ml



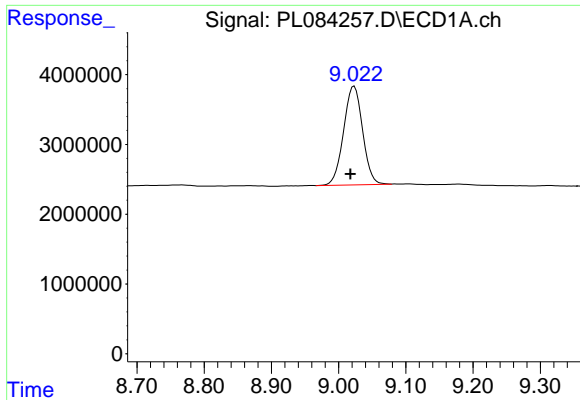
#22 Mirex

R.T.: 8.070 min  
 Delta R.T.: 0.004 min  
 Response: 65894584  
 Conc: 46.05 ng/ml



#22 Mirex

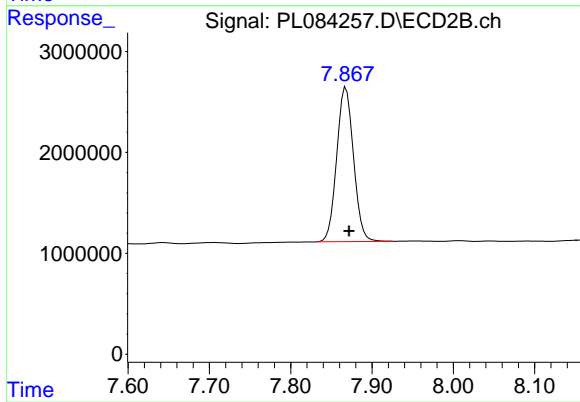
R.T.: 6.952 min  
 Delta R.T.: -0.003 min  
 Response: 49655841  
 Conc: 48.65 ng/ml



#28 Decachlorobiphenyl

R.T.: 9.023 min  
Delta R.T.: 0.006 min  
Response: 27757955  
Conc: 21.33 ng/ml

Instrument :  
ECD\_L  
ClientSampleId :  
B-P39BMS



#28 Decachlorobiphenyl

R.T.: 7.868 min  
Delta R.T.: -0.004 min  
Response: 21952634  
Conc: 19.76 ng/ml