

Data Path : Z:\pestpcbsrv\HPCHEM1\ECD\_L\Data\PL072623\  
 Data File : PL084263.D  
 Signal(s) : Signal #1: ECD1A.ch Signal #2: ECD2B.ch  
 Acq On : 27 Jul 2023 02:11  
 Operator : AR\AJ  
 Sample : 03769-13  
 Misc :  
 ALS Vial : 43 Sample Multiplier: 1

Instrument :  
 ECD\_L  
 ClientSampleId :  
 B-P31A

Integration File signal 1: autoint1.e  
 Integration File signal 2: autoint2.e  
 Quant Time: Jul 27 03:23:15 2023  
 Quant Method : Z:\pestpcbsrv\HPCHEM1\ECD\_L\methods\PL071223.M  
 Quant Title : GC Extractables  
 QLast Update : Fri Jul 14 00:03:54 2023  
 Response via : Initial Calibration  
 Integrator: ChemStation

Volume Inj. : 1 µl  
 Signal #1 Phase : ZB-MR2 Signal #2 Phase: ZB-MR1  
 Signal #1 Info : 30M x 0.32mm x0.2 Signal #2 Info : 30M x 0.32mm x0.5µm

Compound	RT#1	RT#2	Resp#1	Resp#2	ng/ml	ng/ml
-----						
System Monitoring Compounds						
1) SA Tetrachlo...	3.476	2.688	17452763	8444566	8.727	7.604
28) SA Decachlor...	9.024	7.869	13834956	10879765	10.629	9.792

Target Compounds

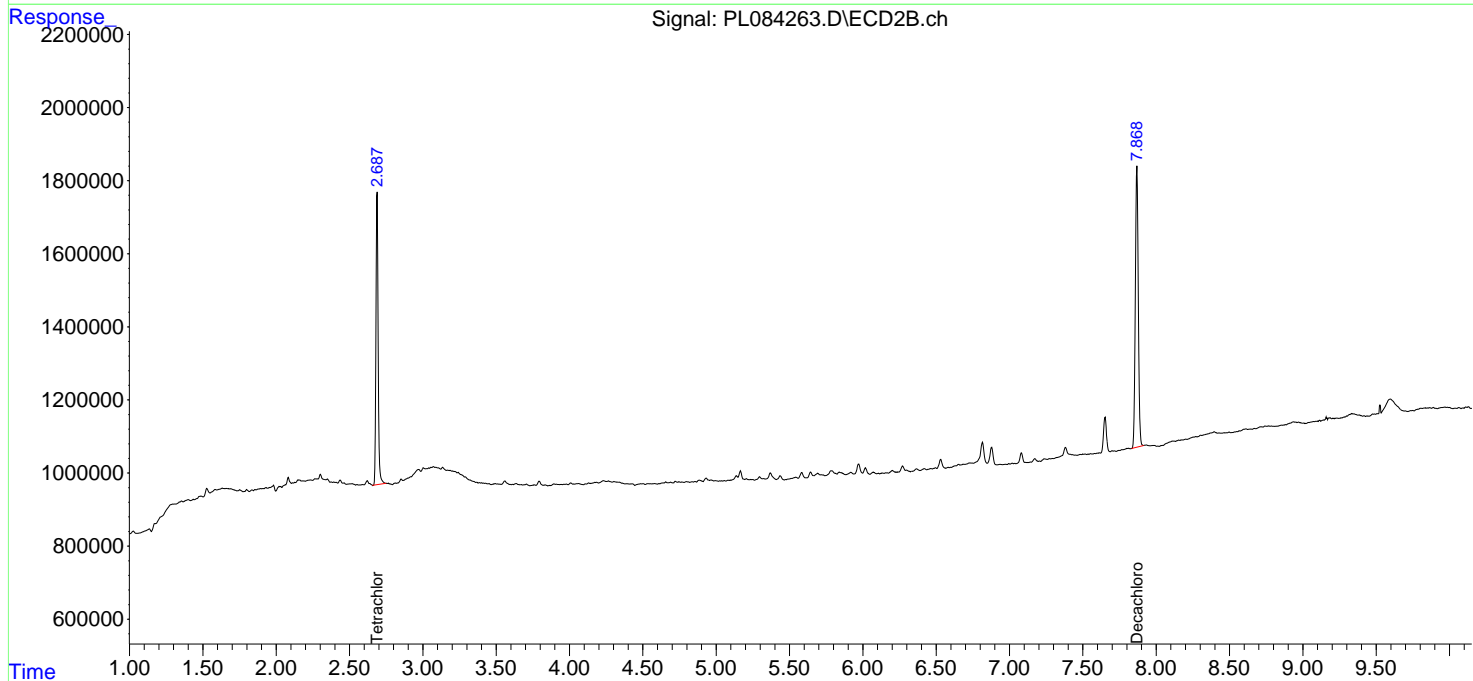
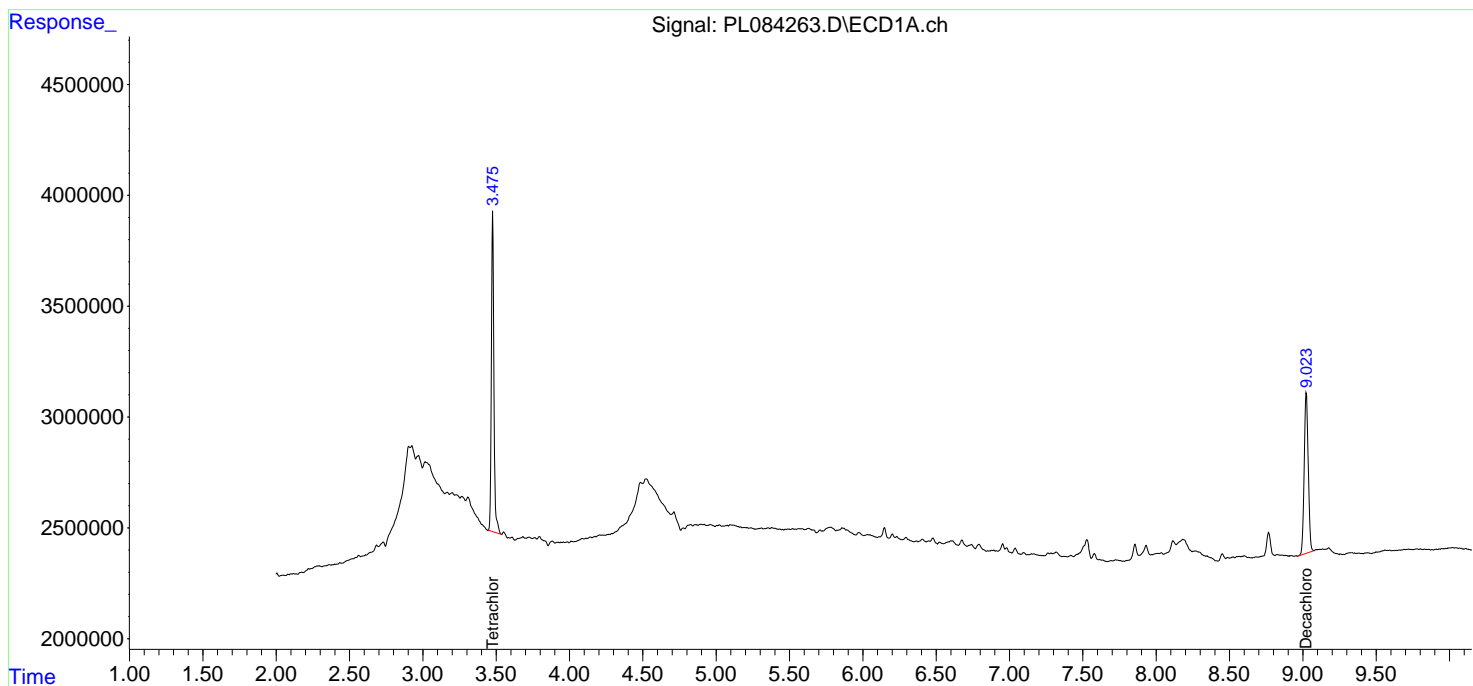
(f)=RT Delta > 1/2 Window (#)=Amounts differ by > 25% (m)=manual int.

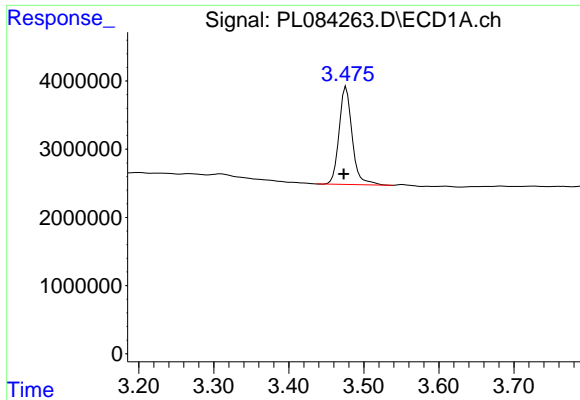
Data Path : Z:\pestpcbsrv\HPCHEM1\ECD\_L\Data\PL072623\  
Data File : PL084263.D  
Signal(s) : Signal #1: ECD1A.ch Signal #2: ECD2B.ch  
Acq On : 27 Jul 2023 02:11  
Operator : AR\AJ  
Sample : 03769-13  
Misc :  
ALS Vial : 43 Sample Multiplier: 1

Instrument :  
ECD\_L  
ClientSampleId :  
B-P31A

Integration File signal 1: autoint1.e  
Integration File signal 2: autoint2.e  
Quant Time: Jul 27 03:23:15 2023  
Quant Method : Z:\pestpcbsrv\HPCHEM1\ECD\_L\methods\PL071223.M  
Quant Title : GC Extractables  
QLast Update : Fri Jul 14 00:03:54 2023  
Response via : Initial Calibration  
Integrator: ChemStation

Volume Inj. : 1 µl  
Signal #1 Phase : ZB-MR2 Signal #2 Phase: ZB-MR1  
Signal #1 Info : 30M x 0.32mm x0.2 Signal #2 Info : 30M x 0.32mm x0.5µm

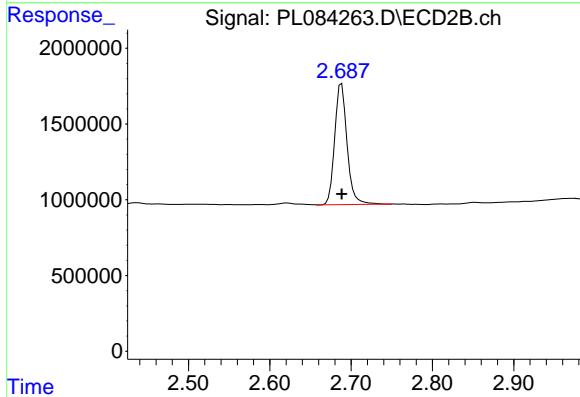




#1 Tetrachloro-m-xylene

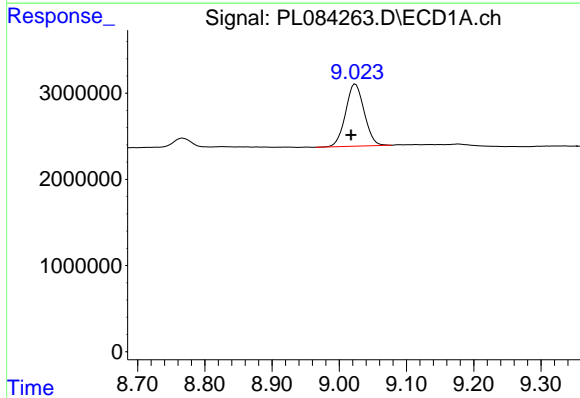
R.T.: 3.476 min  
 Delta R.T.: 0.003 min  
 Response: 17452763  
 Conc: 8.73 ng/ml

Instrument :  
 ECD\_L  
 ClientSampleId :  
 B-P31A



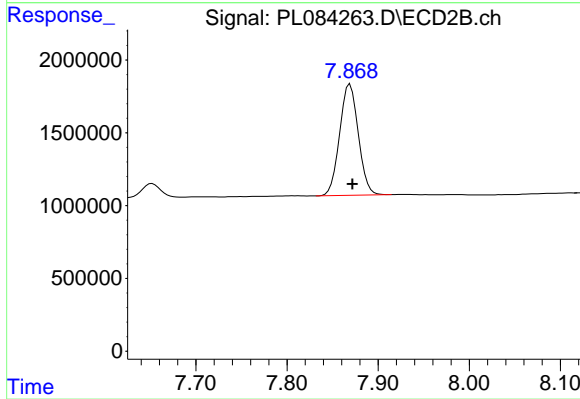
#1 Tetrachloro-m-xylene

R.T.: 2.688 min  
 Delta R.T.: 0.000 min  
 Response: 8444566  
 Conc: 7.60 ng/ml



#28 Decachlorobiphenyl

R.T.: 9.024 min  
 Delta R.T.: 0.007 min  
 Response: 13834956  
 Conc: 10.63 ng/ml



#28 Decachlorobiphenyl

R.T.: 7.869 min  
 Delta R.T.: -0.002 min  
 Response: 10879765  
 Conc: 9.79 ng/ml