

Data Path : Z:\pestpcbsrv\HPCHEM1\ECD_L\Data\PL072718\
 Data File : PL038669.D
 Signal(s) : Signal #1: ECD1A.ch Signal #2: ECD2B.ch
 Acq On : 27 Jul 2018 17:09
 Operator : AJ\SJ
 Sample : J4192-03MSD
 Misc :
 ALS Vial : 17 Sample Multiplier: 1

Instrument :
 ECD_L
 ClientSampleId :
 FK-BPM-03-001-BMSD

Integration File signal 1: autoint1.e
 Integration File signal 2: autoint2.e
 Quant Time: Jul 27 22:51:27 2018
 Quant Method : Z:\PESTPCBSRV\HPCHEM1\ECD_L\methods\PL071318.M
 Quant Title : GC Extractables
 QLast Update : Sat Jul 14 00:12:12 2018
 Response via : Initial Calibration
 Integrator: ChemStation

Volume Inj. : 2 µl
 Signal #1 Phase : ZB-MR1 Signal #2 Phase: ZB-MR2
 Signal #1 Info : 30M x 0.32mm x0.5 Signal #2 Info : 30M x 0.32mm x0.25µm

	Compound	RT#1	RT#2	Resp#1	Resp#2	ng/ml	ng/ml

System Monitoring Compounds							
1)	SA Tetrachlo...	3.325	3.927	172.9E6	67496143	23.213	25.713
28)	SA Decachlor...	7.993	8.935	151.2E6	55664897	19.938	22.772
Target Compounds							
2)	A alpha-BHC	3.754	4.307	651.2E6	245.8E6	55.111	63.521
3)	MA gamma-BHC...	4.030	4.586	561.6E6	214.3E6	53.564	59.337
4)	MA Heptachlor	4.313	5.097	549.5E6	200.8E6	51.656	62.827
5)	MB Aldrin	4.551	5.399	564.9E6	193.4E6	53.972	62.654
6)	B beta-BHC	4.284	4.748	250.9E6	95494396	53.154	62.954
7)	B delta-BHC	4.478	4.963	503.3E6	176.8E6	46.371	53.318
8)	Heptachlo...	4.989	5.779	500.8E6	169.8E6	53.114	59.765
9)	A Endosulfan I	5.320	6.131	446.5E6	139.7E6	51.619	54.313
10)	B gamma-Chl...	5.211	6.011	536.6E6	164.7E6	54.294	56.807
11)	B alpha-Chl...	5.268	6.085	507.2E6	165.2E6	53.580	57.642
12)	B 4,4'-DDE	5.436	6.241	507.3E6	158.2E6	52.914	59.143
13)	MA Dieldrin	5.559	6.385	414.2E6	141.3E6	43.102	51.897
14)	MA Endrin	5.812	6.600	184.7E6	49808066	21.254	20.856
15)	B Endosulfa...	6.087	6.803	378.4E6	121.9E6	47.721	50.752
16)	A 4,4'-DDD	5.948	6.722	388.3E6	109.9E6	52.935	51.329
17)	MA 4,4'-DDT	6.181	7.022	347.0E6	103.4E6	46.713	48.479
18)	B Endrin al...	6.255	6.926	293.2E6	96333891	46.048	49.367
19)	B Endosulfa...	6.466	7.148	265.1E6	84130216	35.095	38.596
20)	A Methoxychlor	6.729	7.477	145.1E6	45101354	37.715	39.609
21)	B Endrin ke...	6.949	7.612	466.6E6	144.5E6	59.476	60.611
23)	Chlordane-1	4.223	4.935	29173844	2565227	84.256	22.136 #
24)	Chlordane-2	0.000	5.399	0	193.4E6	N.D.	1614.728 #
25)	Chlordane-3	5.211	6.011	536.6E6	164.7E6	461.297	403.767
26)	Chlordane-4	5.268	6.085	507.2E6	165.2E6	482.390	336.272 #
27)	Chlordane-5	5.904	6.926	7168855	96333891	44.768	1075.401 #

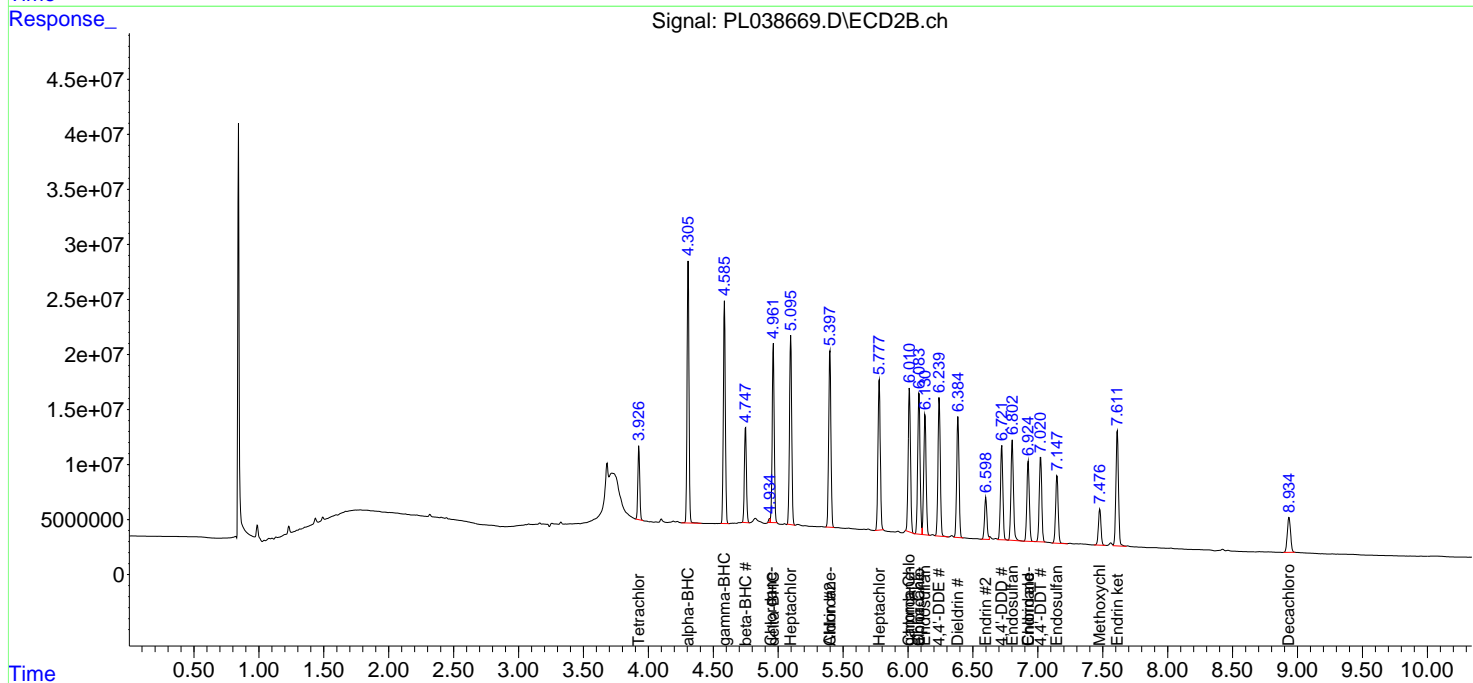
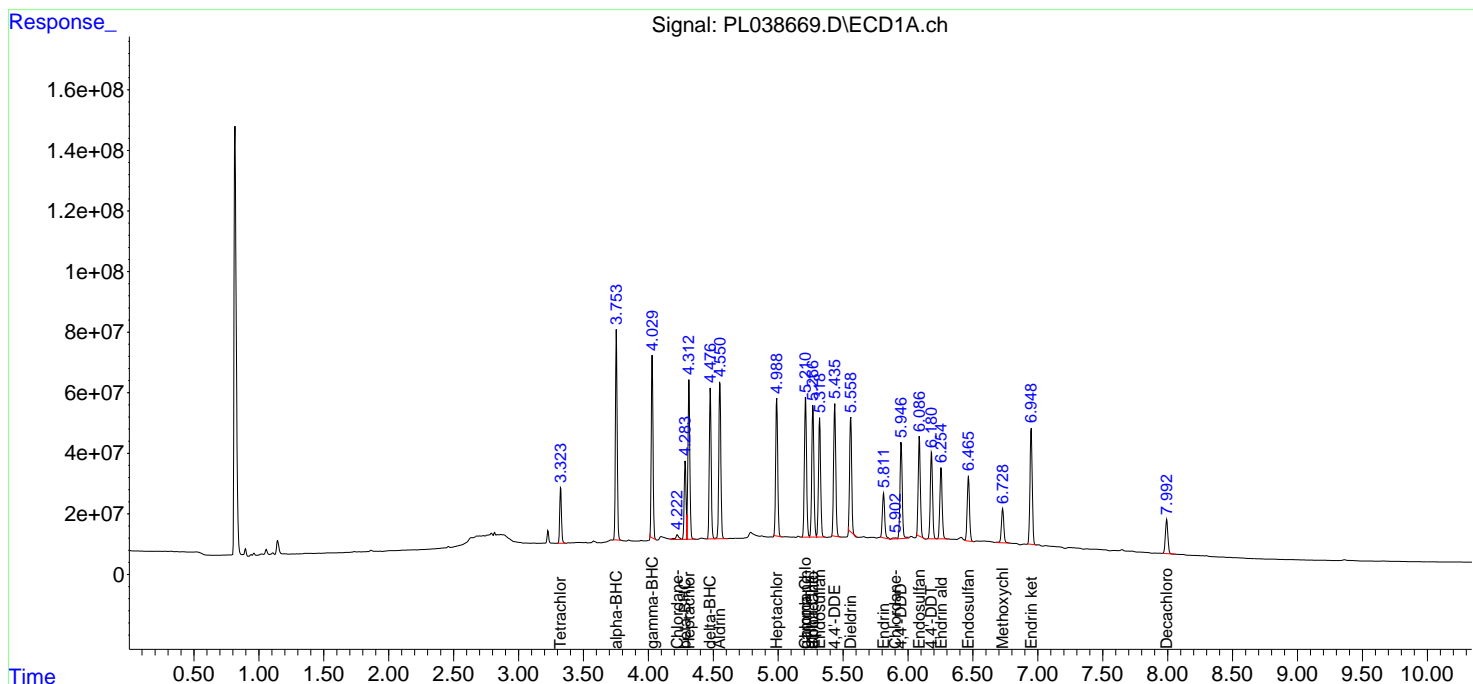
(f)=RT Delta > 1/2 Window (#)=Amounts differ by > 25% (m)=manual int.

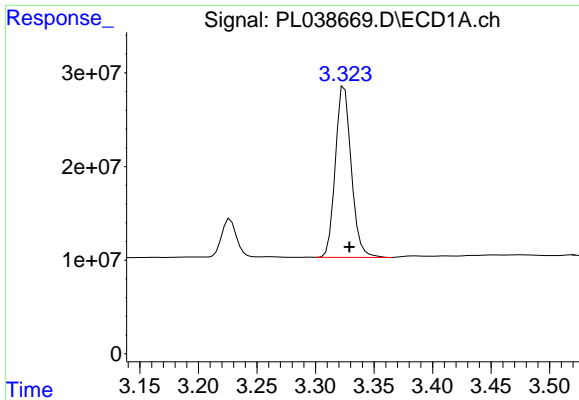
Data Path : Z:\pestpcbsrv\HPCHEM1\ECD_L\Data\PL072718\
 Data File : PL038669.D
 Signal(s) : Signal #1: ECD1A.ch Signal #2: ECD2B.ch
 Acq On : 27 Jul 2018 17:09
 Operator : AJ\SJ
 Sample : J4192-03MSD
 Misc :
 ALS Vial : 17 Sample Multiplier: 1

Instrument :
 ECD_L
 Client Sampled :
 FK-BPM-03-001-BMSD

Integration File signal 1: autoint1.e
 Integration File signal 2: autoint2.e
 Quant Time: Jul 27 22:51:27 2018
 Quant Method : Z:\PESTPCBSRV\HPCHEM1\ECD_L\methods\PL071318.M
 Quant Title : GC Extractables
 QLast Update : Sat Jul 14 00:12:12 2018
 Response via : Initial Calibration
 Integrator: ChemStation

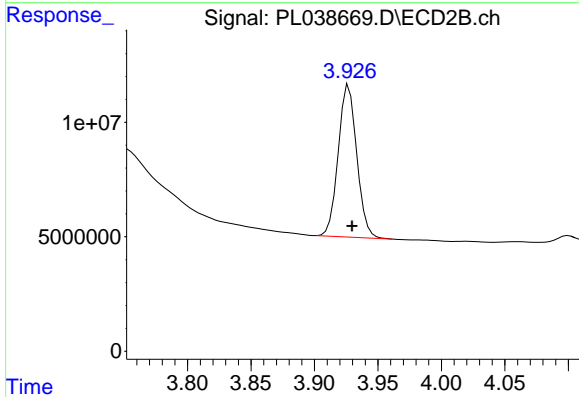
Volume Inj. : 2 µl
 Signal #1 Phase : ZB-MR1 Signal #2 Phase: ZB-MR2
 Signal #1 Info : 30M x 0.32mm x0.5 Signal #2 Info : 30M x 0.32mm x0.25µm



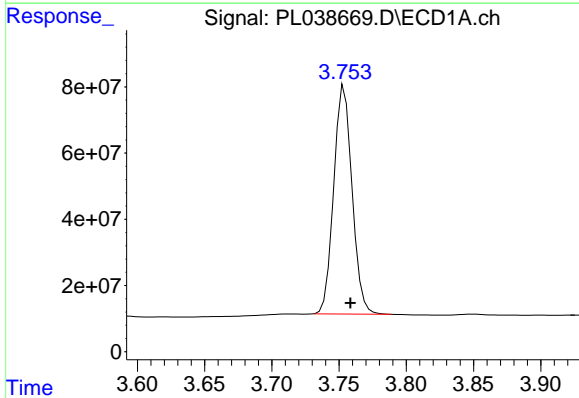


#1 Tetrachloro-m-xylene
 R.T.: 3.325 min
 Delta R.T.: -0.004 min
 Response: 172850938
 Conc: 23.21 ng/ml

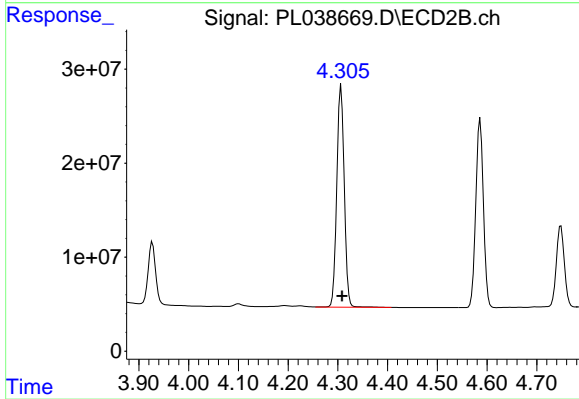
Instrument :
 ECD_L
 ClientSampleId :
 FK-BPM-03-001-BMSD



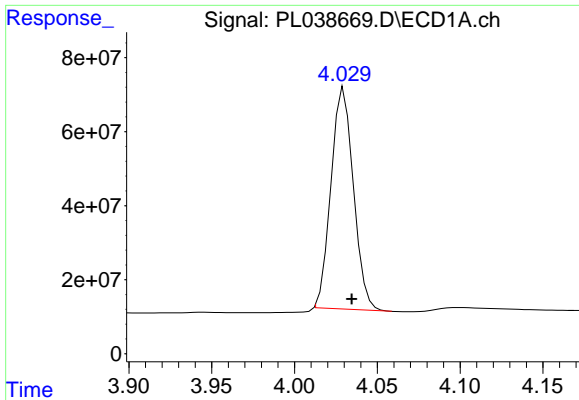
#1 Tetrachloro-m-xylene
 R.T.: 3.927 min
 Delta R.T.: -0.002 min
 Response: 67496143
 Conc: 25.71 ng/ml



#2 alpha-BHC
 R.T.: 3.754 min
 Delta R.T.: -0.004 min
 Response: 651158553
 Conc: 55.11 ng/ml



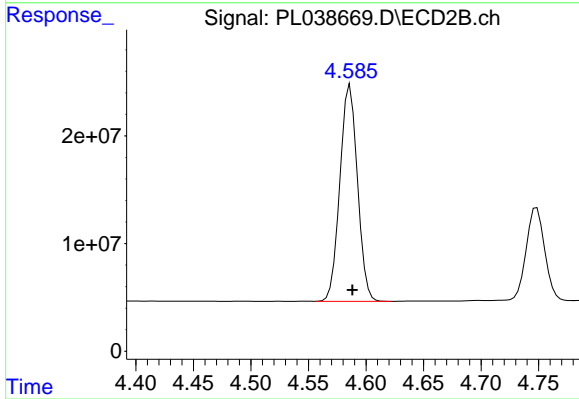
#2 alpha-BHC
 R.T.: 4.307 min
 Delta R.T.: -0.002 min
 Response: 245835895
 Conc: 63.52 ng/ml



#3 gamma-BHC (Lindane)

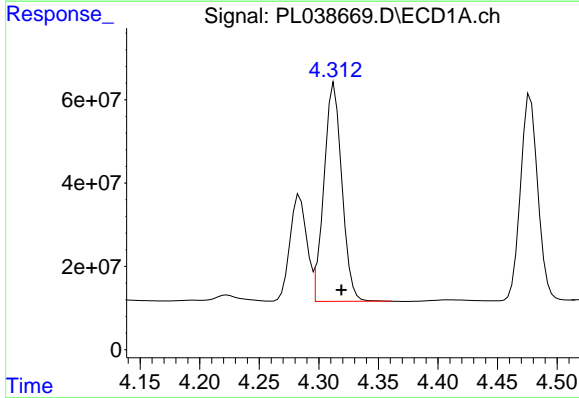
R.T.: 4.030 min
Delta R.T.: -0.005 min
Response: 561560062
Conc: 53.56 ng/ml

Instrument :
ECD_L
ClientSampleId :
FK-BPM-03-001-BMSD



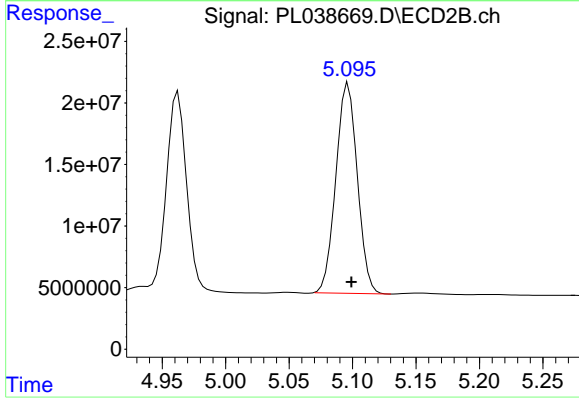
#3 gamma-BHC (Lindane)

R.T.: 4.586 min
Delta R.T.: -0.002 min
Response: 214314387
Conc: 59.34 ng/ml



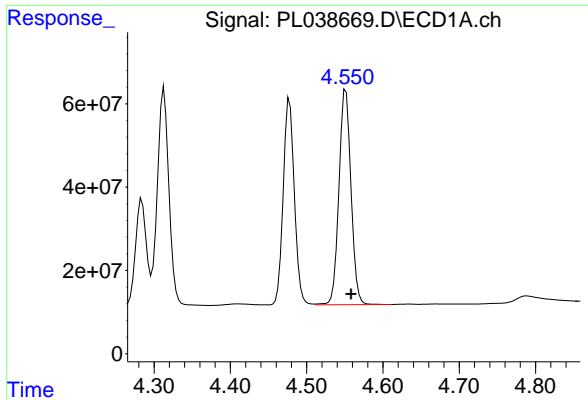
#4 Heptachlor

R.T.: 4.313 min
Delta R.T.: -0.006 min
Response: 549480033
Conc: 51.66 ng/ml



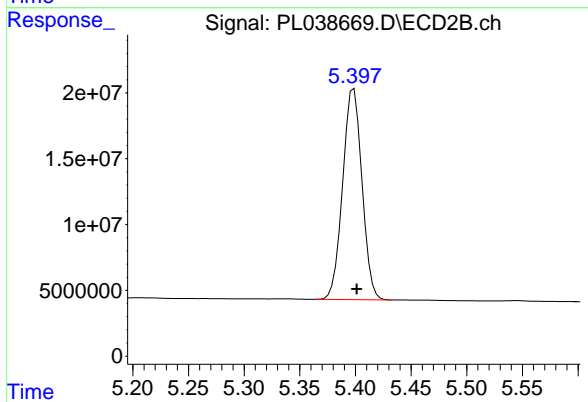
#4 Heptachlor

R.T.: 5.097 min
Delta R.T.: -0.002 min
Response: 200809883
Conc: 62.83 ng/ml

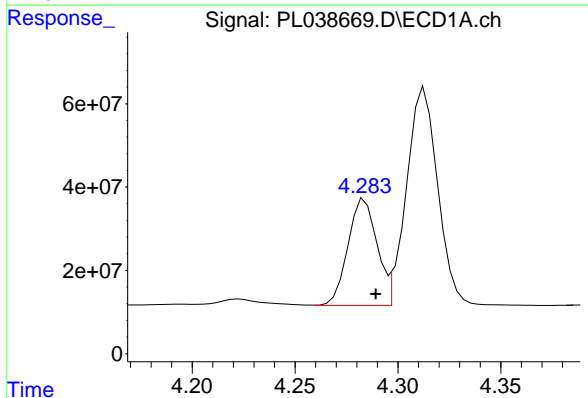


#5 Aldrin
 R.T.: 4.551 min
 Delta R.T.: -0.007 min
 Response: 564946279
 Conc: 53.97 ng/ml

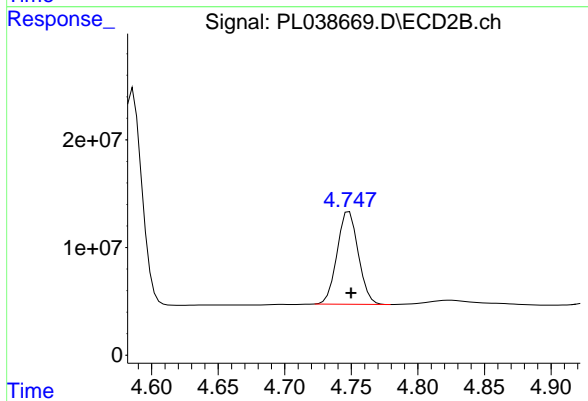
Instrument :
 ECD_L
 ClientSampleId :
 FK-BPM-03-001-BMSD



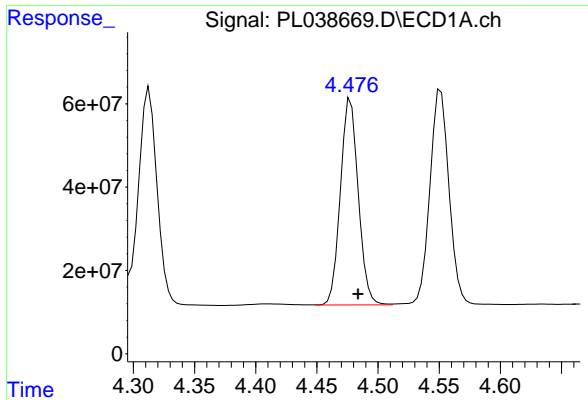
#5 Aldrin
 R.T.: 5.399 min
 Delta R.T.: -0.003 min
 Response: 193363895
 Conc: 62.65 ng/ml



#6 beta-BHC
 R.T.: 4.284 min
 Delta R.T.: -0.005 min
 Response: 250903571
 Conc: 53.15 ng/ml

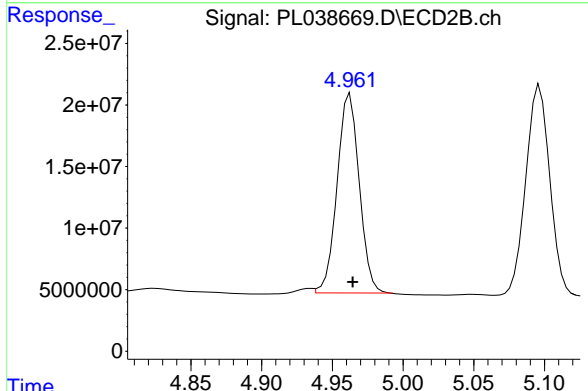


#6 beta-BHC
 R.T.: 4.748 min
 Delta R.T.: -0.001 min
 Response: 95494396
 Conc: 62.95 ng/ml

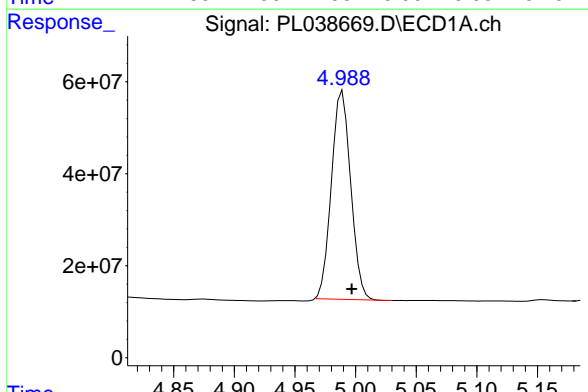


#7 delta-BHC
 R.T.: 4.478 min
 Delta R.T.: -0.006 min
 Response: 503314786
 Conc: 46.37 ng/ml

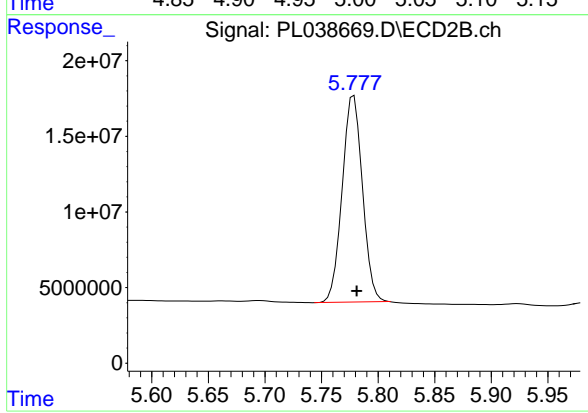
Instrument :
 ECD_L
ClientSampleId :
 FK-BPM-03-001-BMSD



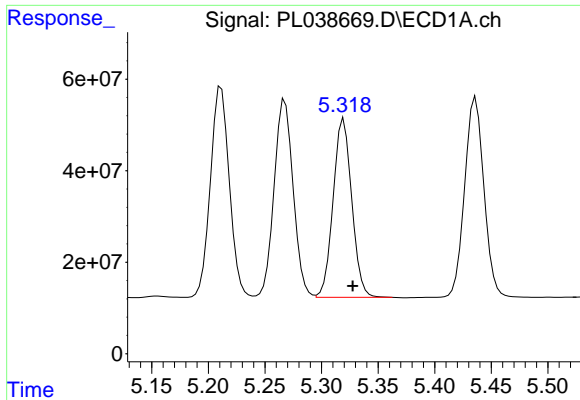
#7 delta-BHC
 R.T.: 4.963 min
 Delta R.T.: -0.002 min
 Response: 176835231
 Conc: 53.32 ng/ml



#8 Heptachlor epoxide
 R.T.: 4.989 min
 Delta R.T.: -0.007 min
 Response: 500787339
 Conc: 53.11 ng/ml

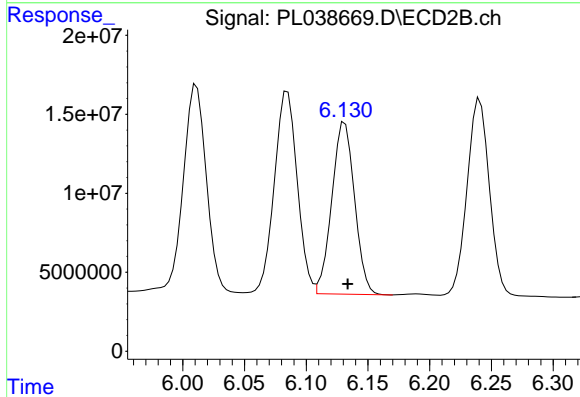


#8 Heptachlor epoxide
 R.T.: 5.779 min
 Delta R.T.: -0.003 min
 Response: 169844989
 Conc: 59.76 ng/ml

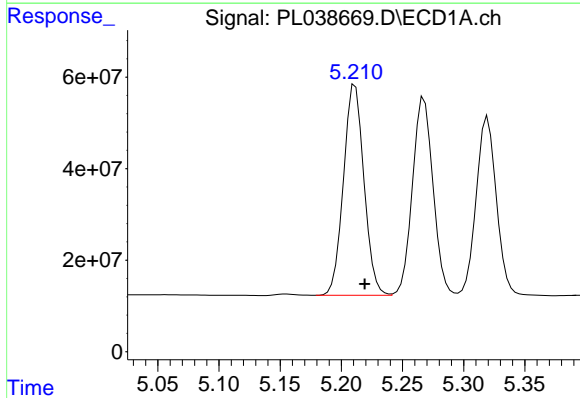


#9 Endosulfan I
 R.T.: 5.320 min
 Delta R.T.: -0.008 min
 Response: 446483110
 Conc: 51.62 ng/ml

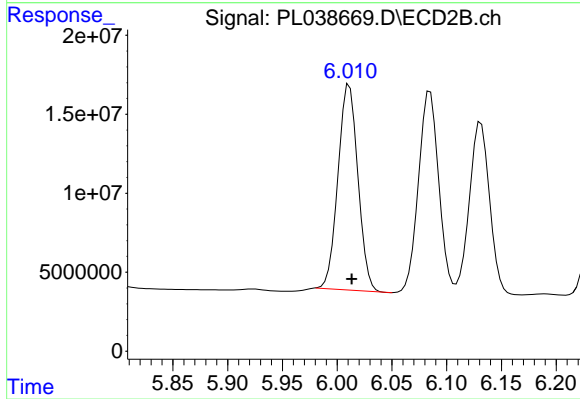
Instrument :
 ECD_L
 ClientSampleId :
 FK-BPM-03-001-BMSD



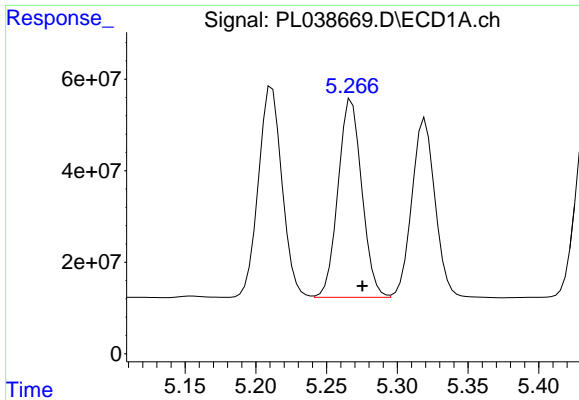
#9 Endosulfan I
 R.T.: 6.131 min
 Delta R.T.: -0.002 min
 Response: 139680307
 Conc: 54.31 ng/ml



#10 gamma-Chlordane
 R.T.: 5.211 min
 Delta R.T.: -0.008 min
 Response: 536641808
 Conc: 54.29 ng/ml

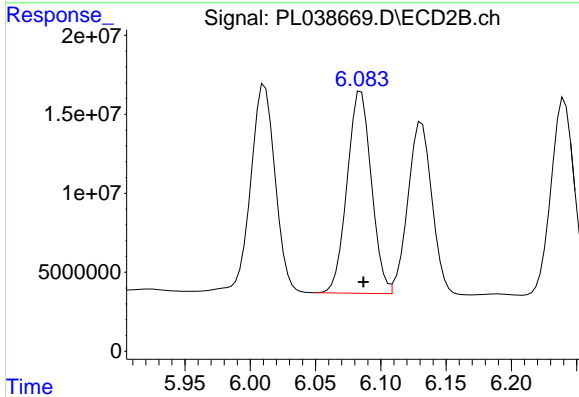


#10 gamma-Chlordane
 R.T.: 6.011 min
 Delta R.T.: -0.002 min
 Response: 164696792
 Conc: 56.81 ng/ml

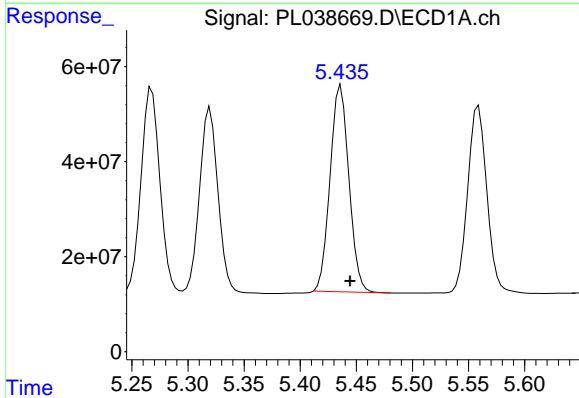


#11 alpha-Chlordane
 R.T.: 5.268 min
 Delta R.T.: -0.008 min
 Response: 507176420
 Conc: 53.58 ng/ml

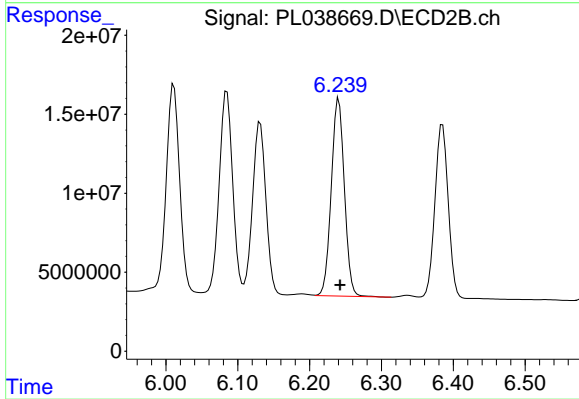
Instrument :
 ECD_L
 ClientSampleId :
 FK-BPM-03-001-BMSD



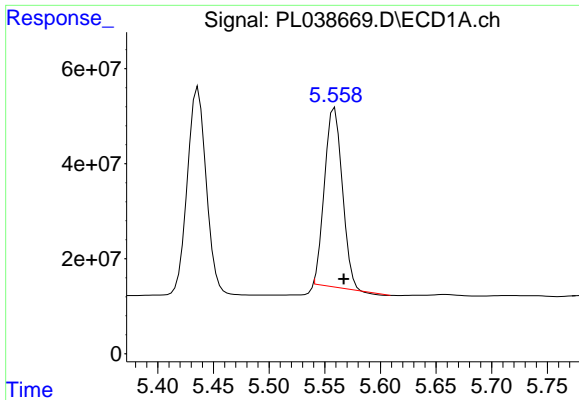
#11 alpha-Chlordane
 R.T.: 6.085 min
 Delta R.T.: -0.002 min
 Response: 165215301
 Conc: 57.64 ng/ml



#12 4,4'-DDE
 R.T.: 5.436 min
 Delta R.T.: -0.008 min
 Response: 507331577
 Conc: 52.91 ng/ml

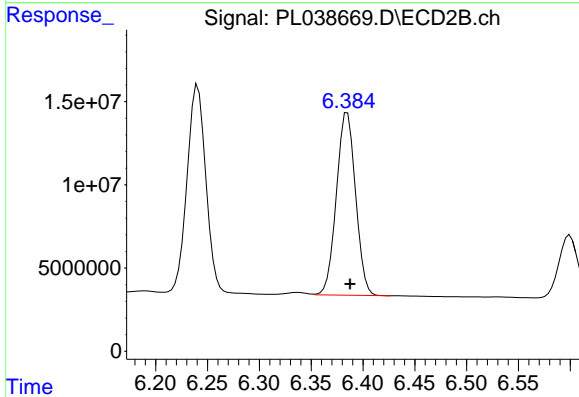


#12 4,4'-DDE
 R.T.: 6.241 min
 Delta R.T.: -0.002 min
 Response: 158152428
 Conc: 59.14 ng/ml

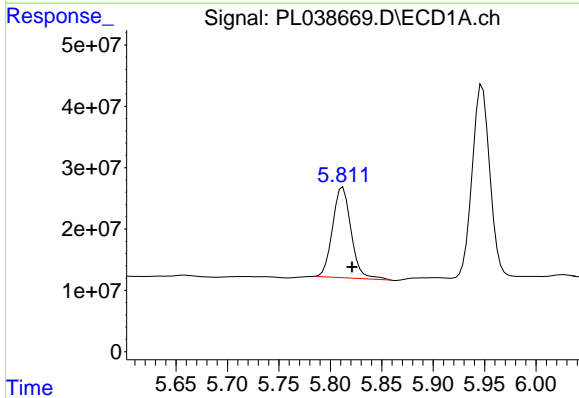


#13 Dieldrin
 R.T.: 5.559 min
 Delta R.T.: -0.008 min
 Response: 414222142
 Conc: 43.10 ng/ml

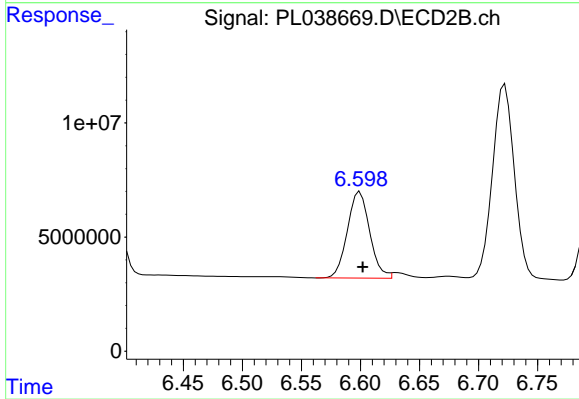
Instrument :
 ECD_L
ClientSampleId :
 FK-BPM-03-001-BMSD



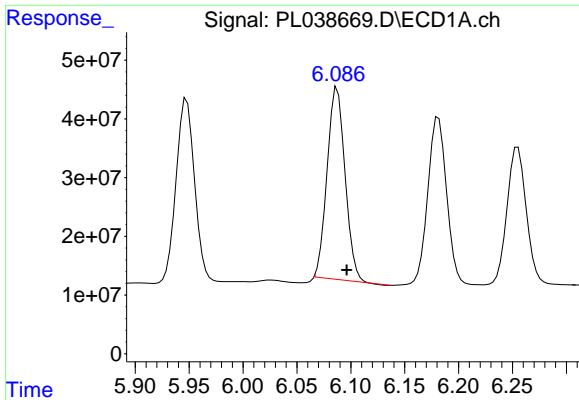
#13 Dieldrin
 R.T.: 6.385 min
 Delta R.T.: -0.002 min
 Response: 141251484
 Conc: 51.90 ng/ml



#14 Endrin
 R.T.: 5.812 min
 Delta R.T.: -0.009 min
 Response: 184661506
 Conc: 21.25 ng/ml



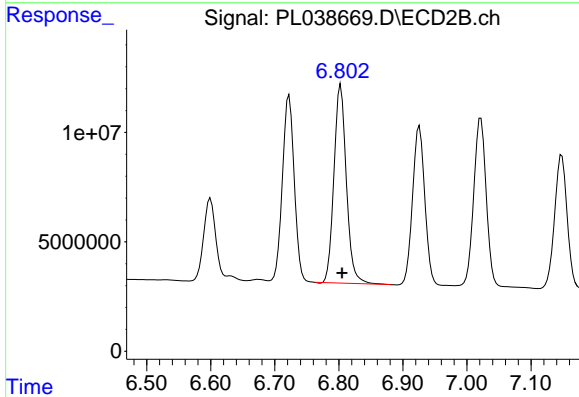
#14 Endrin
 R.T.: 6.600 min
 Delta R.T.: -0.002 min
 Response: 49808066
 Conc: 20.86 ng/ml



#15 Endosulfan II

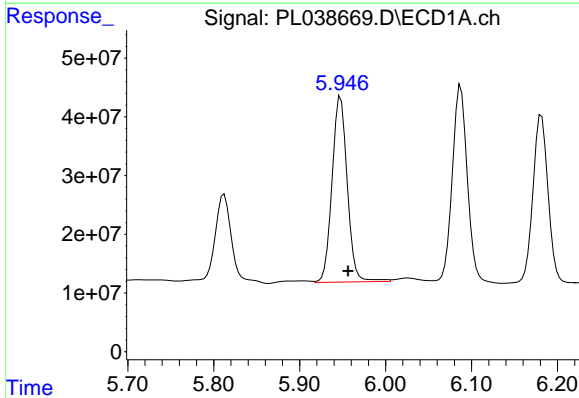
R.T.: 6.087 min
Delta R.T.: -0.009 min
Response: 378436201
Conc: 47.72 ng/ml

Instrument :
ECD_L
ClientSampleId :
FK-BPM-03-001-BMSD



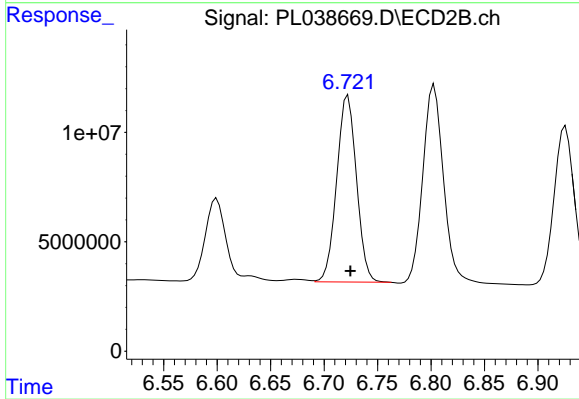
#15 Endosulfan II

R.T.: 6.803 min
Delta R.T.: -0.002 min
Response: 121875152
Conc: 50.75 ng/ml



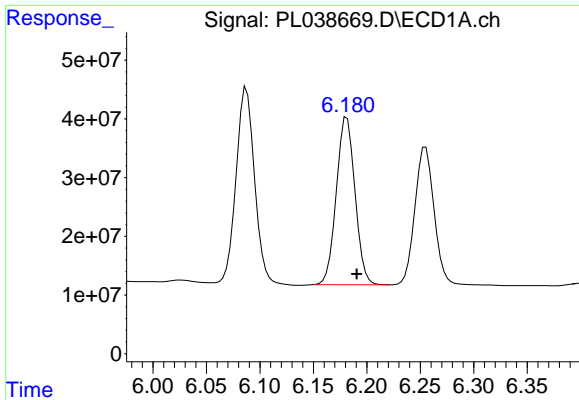
#16 4,4'-DDD

R.T.: 5.948 min
Delta R.T.: -0.009 min
Response: 388313675
Conc: 52.94 ng/ml



#16 4,4'-DDD

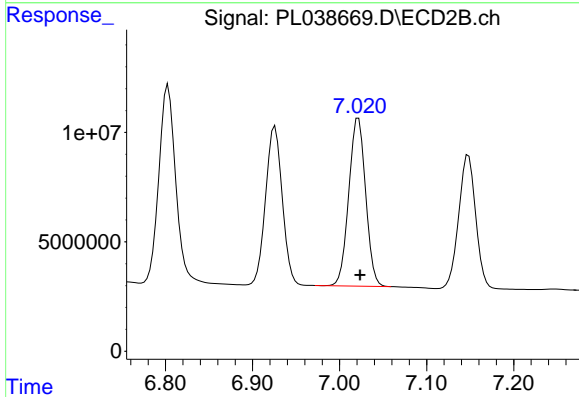
R.T.: 6.722 min
Delta R.T.: -0.002 min
Response: 109865967
Conc: 51.33 ng/ml



#17 4,4'-DDT

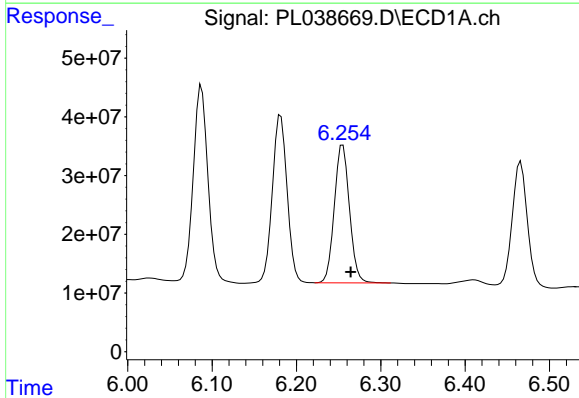
R.T.: 6.181 min
 Delta R.T.: -0.009 min
 Response: 347017055
 Conc: 46.71 ng/ml

Instrument :
 ECD_L
 ClientSampleId :
 FK-BPM-03-001-BMSD



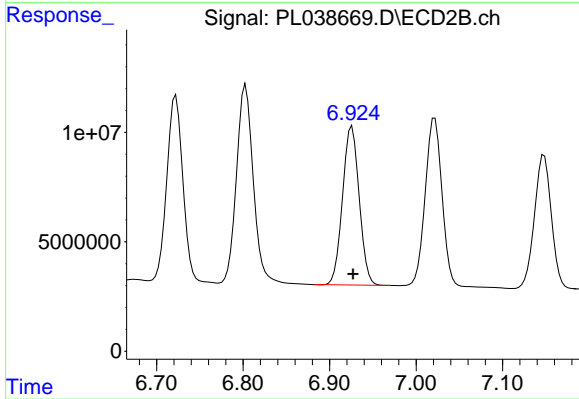
#17 4,4'-DDT

R.T.: 7.022 min
 Delta R.T.: -0.002 min
 Response: 103358462
 Conc: 48.48 ng/ml



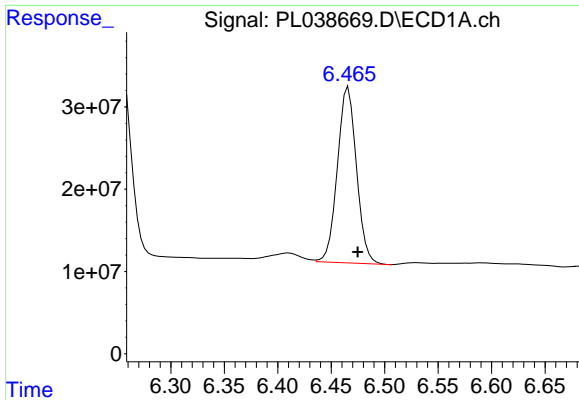
#18 Endrin aldehyde

R.T.: 6.255 min
 Delta R.T.: -0.009 min
 Response: 293218360
 Conc: 46.05 ng/ml



#18 Endrin aldehyde

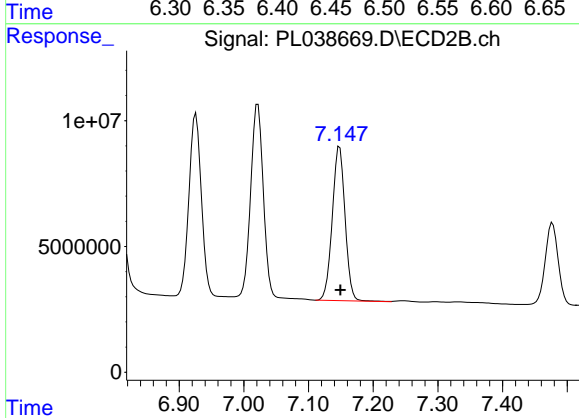
R.T.: 6.926 min
 Delta R.T.: -0.001 min
 Response: 96333891
 Conc: 49.37 ng/ml



#19 Endosulfan Sulfate

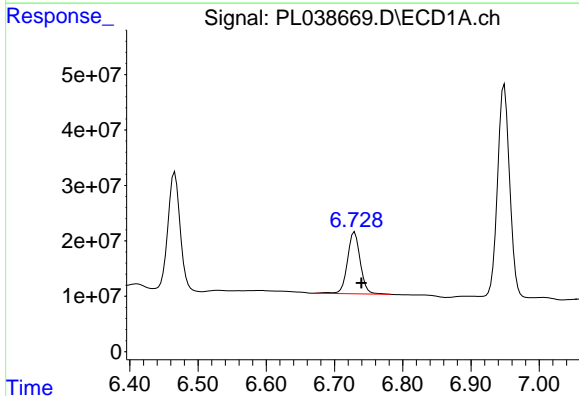
R.T.: 6.466 min
 Delta R.T.: -0.009 min
 Response: 265080218
 Conc: 35.09 ng/ml

Instrument :
 ECD_L
 ClientSampleId :
 FK-BPM-03-001-BMSD



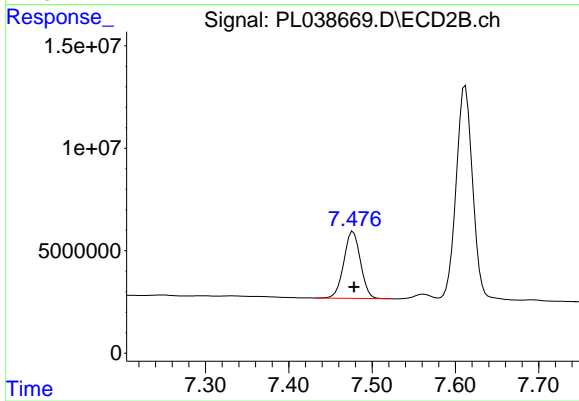
#19 Endosulfan Sulfate

R.T.: 7.148 min
 Delta R.T.: -0.001 min
 Response: 84130216
 Conc: 38.60 ng/ml



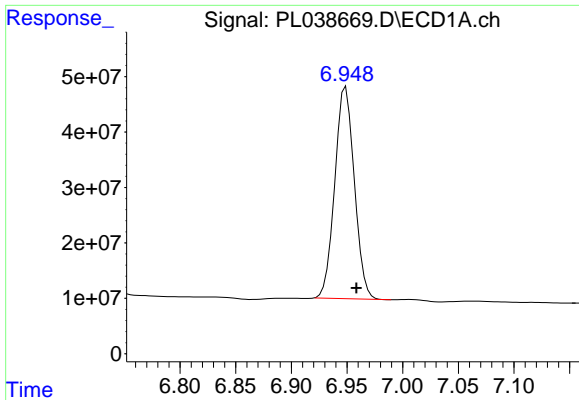
#20 Methoxychlor

R.T.: 6.729 min
 Delta R.T.: -0.010 min
 Response: 145108929
 Conc: 37.72 ng/ml



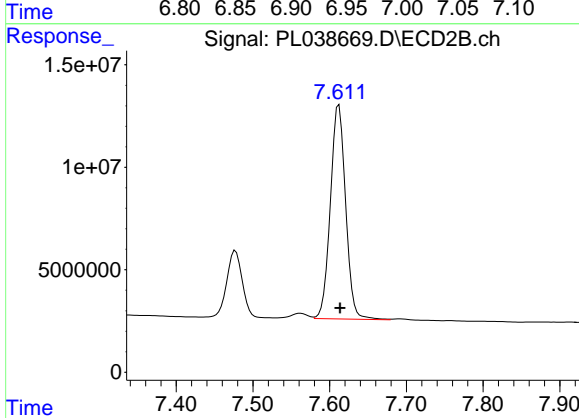
#20 Methoxychlor

R.T.: 7.477 min
 Delta R.T.: 0.000 min
 Response: 45101354
 Conc: 39.61 ng/ml

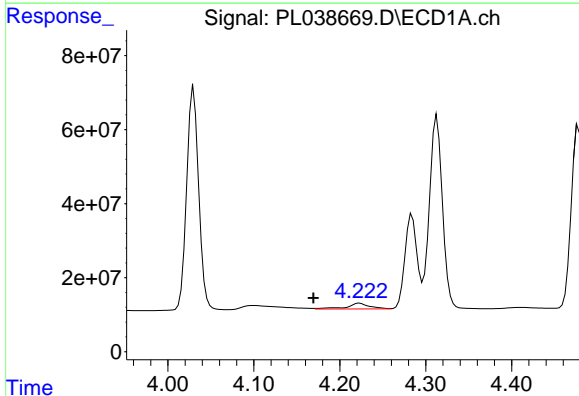


#21 Endrin ketone
 R.T.: 6.949 min
 Delta R.T.: -0.010 min
 Response: 466647830
 Conc: 59.48 ng/ml

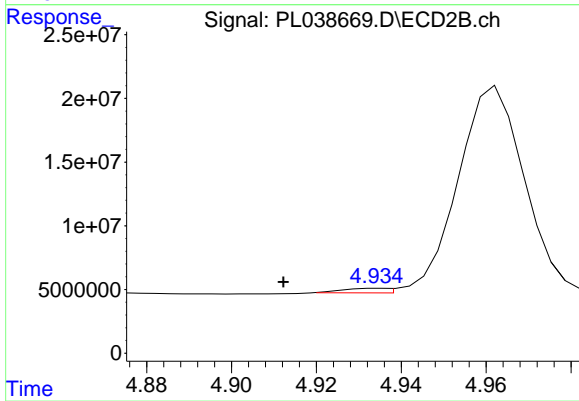
Instrument :
 ECD_L
 ClientSampleId :
 FK-BPM-03-001-BMSD



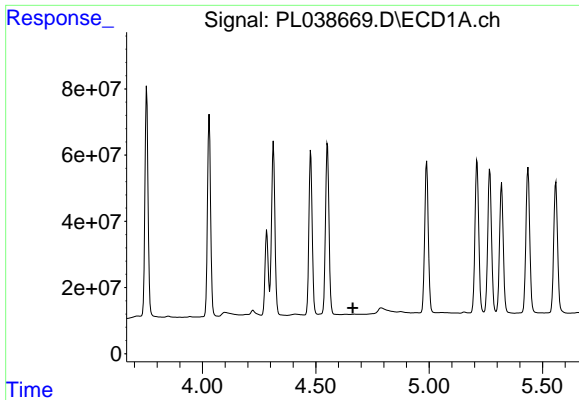
#21 Endrin ketone
 R.T.: 7.612 min
 Delta R.T.: -0.001 min
 Response: 144467728
 Conc: 60.61 ng/ml



#23 Chlordane-1
 R.T.: 4.223 min
 Delta R.T.: 0.054 min
 Response: 29173844
 Conc: 84.26 ng/ml



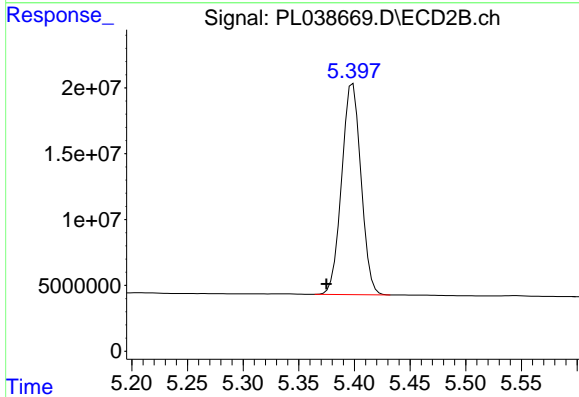
#23 Chlordane-1
 R.T.: 4.935 min
 Delta R.T.: 0.023 min
 Response: 2565227
 Conc: 22.14 ng/ml



#24 Chlordane-2

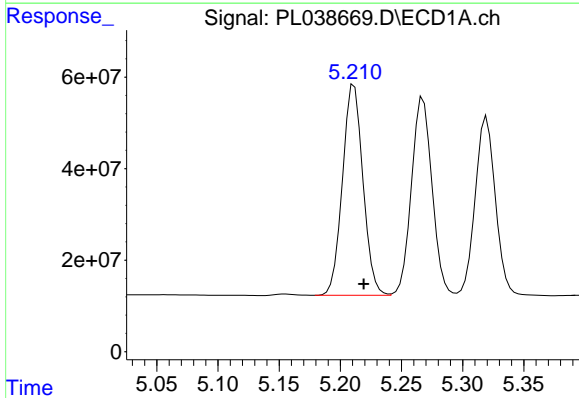
R.T.: 0.000 min
 Exp R.T.: 4.663 min
 Response: 0
 Conc: N.D.

Instrument :
 ECD_L
 ClientSampleId :
 FK-BPM-03-001-BMSD



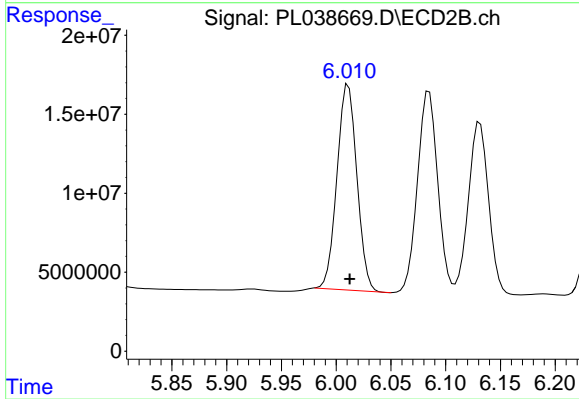
#24 Chlordane-2

R.T.: 5.399 min
 Delta R.T.: 0.024 min
 Response: 193363895
 Conc: 1614.73 ng/ml



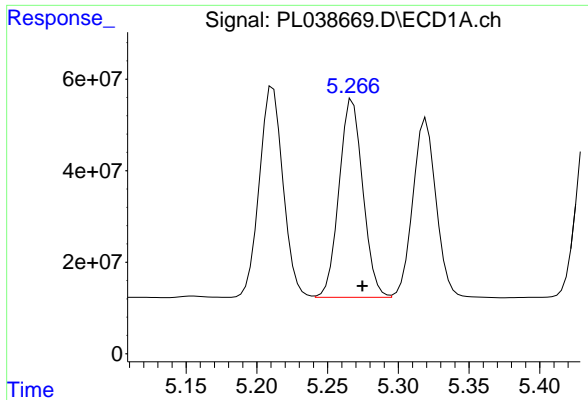
#25 Chlordane-3

R.T.: 5.211 min
 Delta R.T.: -0.008 min
 Response: 536641808
 Conc: 461.30 ng/ml



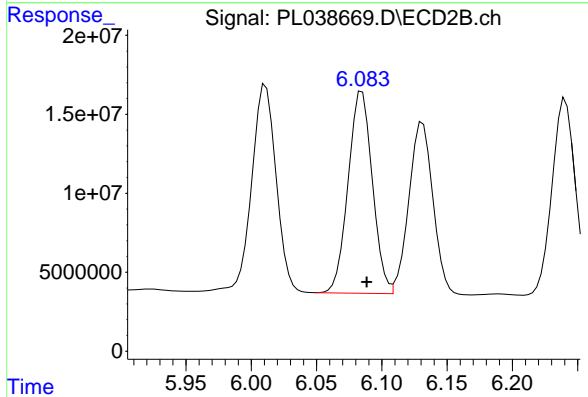
#25 Chlordane-3

R.T.: 6.011 min
 Delta R.T.: -0.001 min
 Response: 164696792
 Conc: 403.77 ng/ml

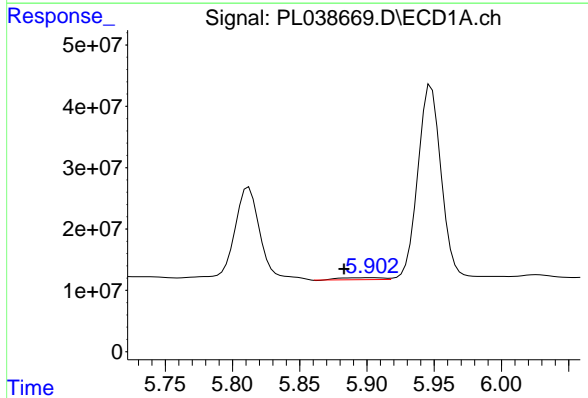


#26 Chlordane-4
 R.T.: 5.268 min
 Delta R.T.: -0.007 min
 Response: 507176420
 Conc: 482.39 ng/ml

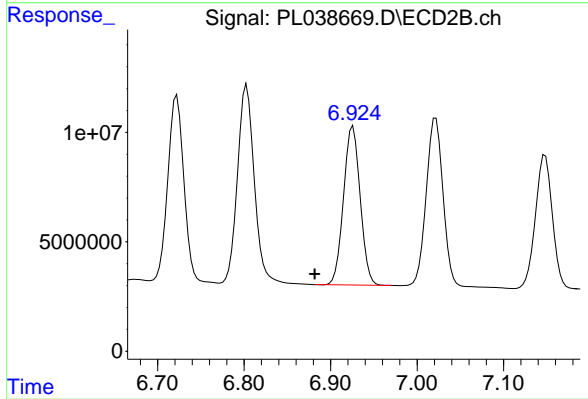
Instrument :
 ECD_L
 ClientSampleId :
 FK-BPM-03-001-BMSD



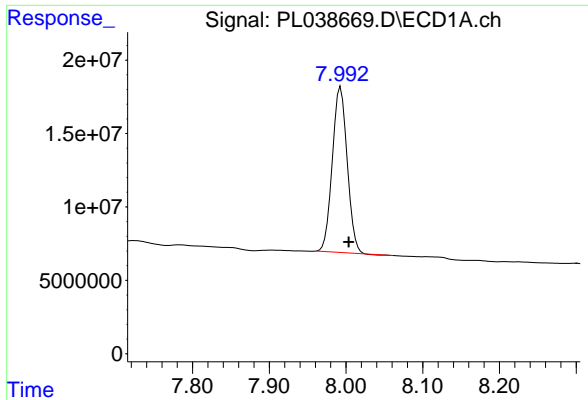
#26 Chlordane-4
 R.T.: 6.085 min
 Delta R.T.: -0.004 min
 Response: 165215301
 Conc: 336.27 ng/ml



#27 Chlordane-5
 R.T.: 5.904 min
 Delta R.T.: 0.021 min
 Response: 7168855
 Conc: 44.77 ng/ml



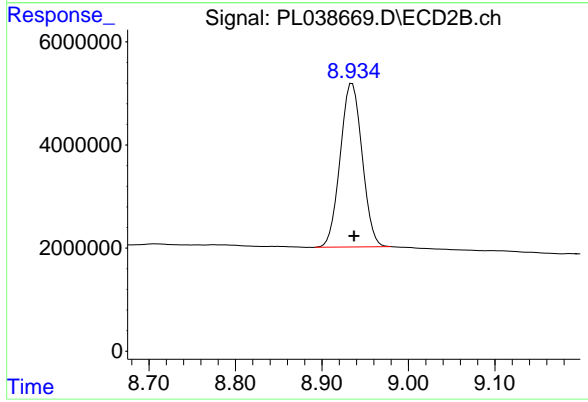
#27 Chlordane-5
 R.T.: 6.926 min
 Delta R.T.: 0.044 min
 Response: 96333891
 Conc: 1075.40 ng/ml



#28 Decachlorobiphenyl

R.T.: 7.993 min
Delta R.T.: -0.011 min
Response: 151243781
Conc: 19.94 ng/ml

Instrument :
ECD_L
ClientSampleId :
FK-BPM-03-001-BMSD



#28 Decachlorobiphenyl

R.T.: 8.935 min
Delta R.T.: -0.002 min
Response: 55664897
Conc: 22.77 ng/ml