

Data Path : Z:\pestpcbsrv\HPCHEM1\ECD\_L\Data\PL072718\  
 Data File : PL038687.D  
 Signal(s) : Signal #1: ECD1A.ch Signal #2: ECD2B.ch  
 Acq On : 27 Jul 2018 21:23  
 Operator : AJ\SJ  
 Sample : J4189-08 (Sig #1); J4189-12 (Sig #2)  
 Misc :  
 ALS Vial : 30 Sample Multiplier: 1

Instrument :  
 ECD\_L  
 ClientSampleId :  
 TP-12-D

Integration File signal 1: autoint1.e  
 Integration File signal 2: autoint2.e  
 Quant Time: Jul 27 22:57:42 2018  
 Quant Method : Z:\PESTPCBSRV\HPCHEM1\ECD\_L\methods\PL071318.M  
 Quant Title : GC Extractables  
 QLast Update : Sat Jul 14 00:12:12 2018  
 Response via : Initial Calibration  
 Integrator: ChemStation

Volume Inj. : 2 µl  
 Signal #1 Phase : ZB-MR1 Signal #2 Phase: ZB-MR2  
 Signal #1 Info : 30M x 0.32mm x0.5 Signal #2 Info : 30M x 0.32mm x0.25µm

Compound	RT#1	RT#2	Resp#1	Resp#2	ng/ml	ng/ml
-----						
System Monitoring Compounds						
1) SA Tetrachlo...	3.325	3.928	163.0E6	61370357	21.887	23.380
28) SA Decachlor...	7.994	8.936	147.4E6	52723984	19.425	21.569

Target Compounds

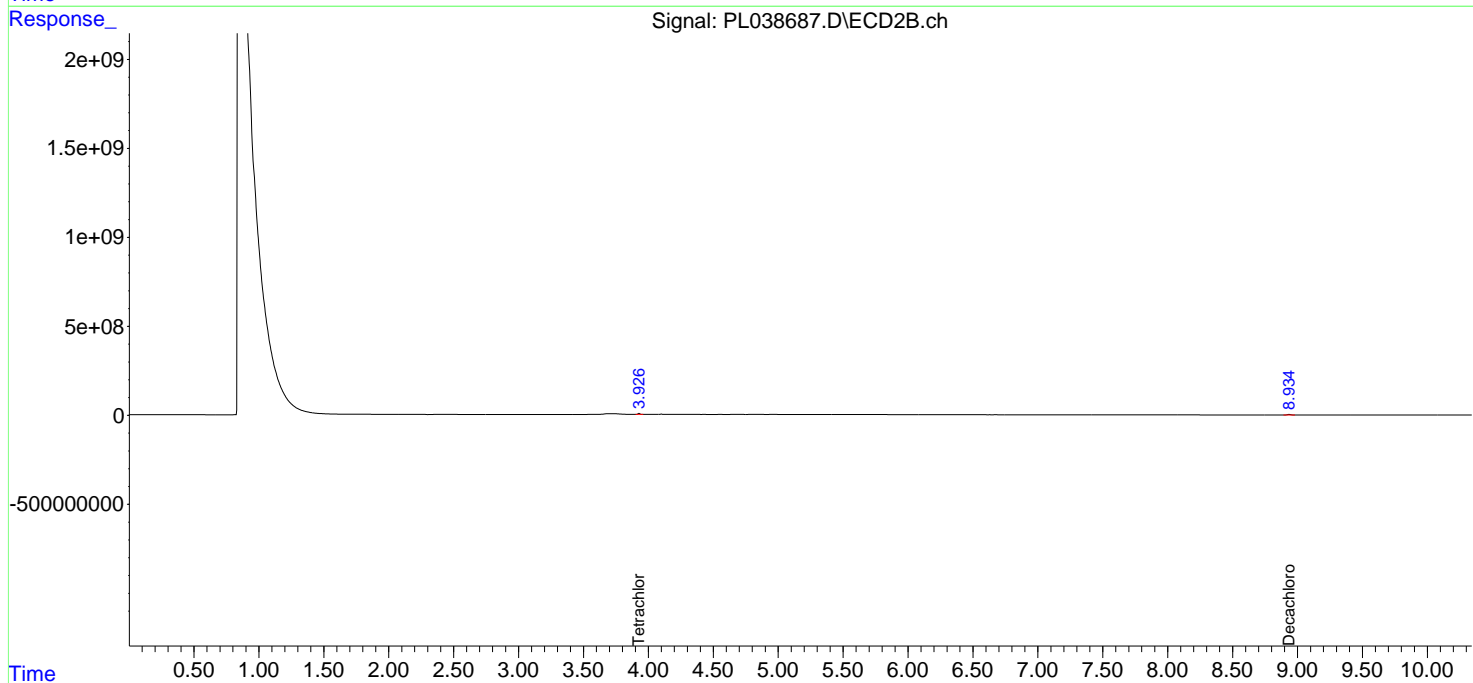
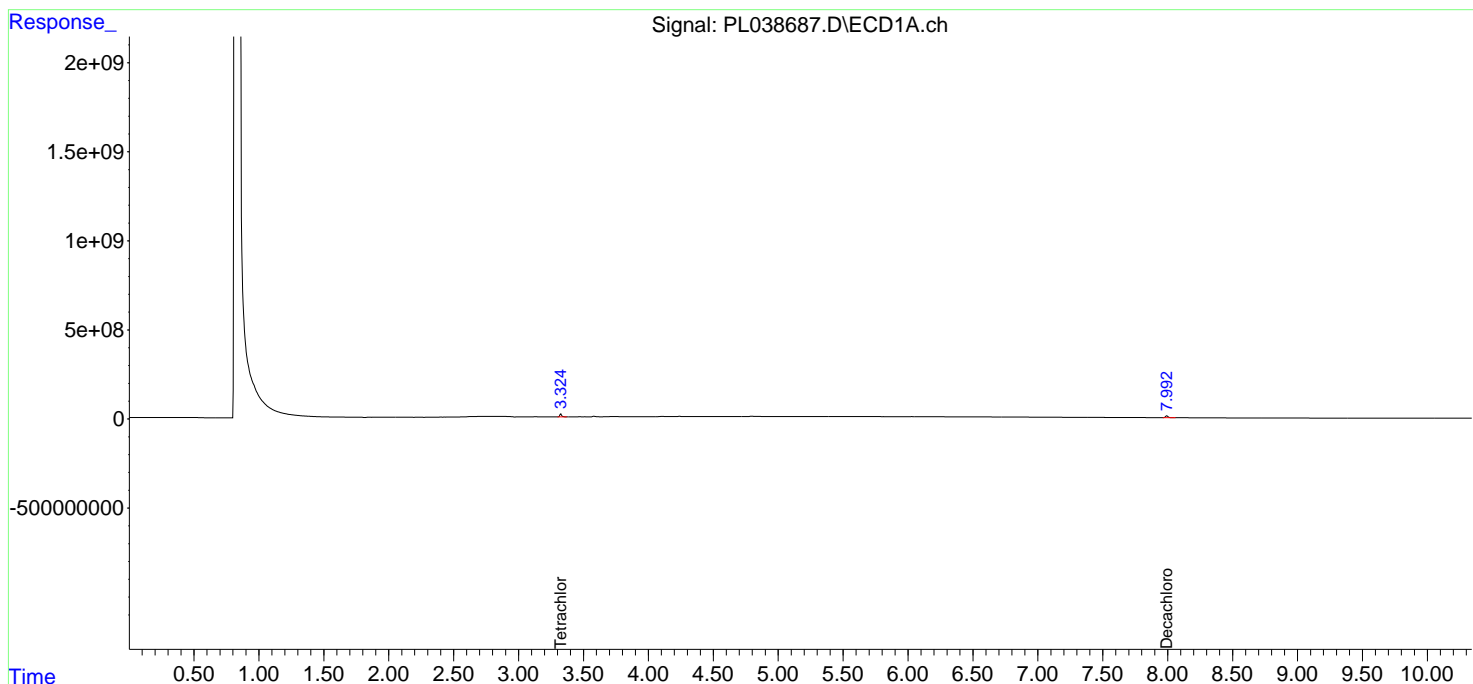
(f)=RT Delta > 1/2 Window (#)=Amounts differ by > 25% (m)=manual int.

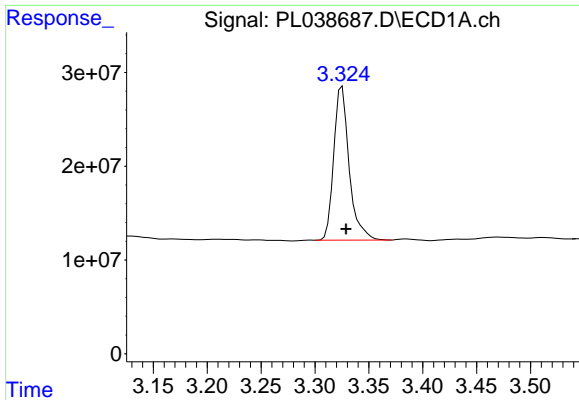
Data Path : Z:\pestpcbsrv\HPCHEM1\ECD\_L\Data\PL072718\  
 Data File : PL038687.D  
 Signal(s) : Signal #1: ECD1A.ch Signal #2: ECD2B.ch  
 Acq On : 27 Jul 2018 21:23  
 Operator : AJ\SJ  
 Sample : J4189-08 (Sig #1); J4189-12 (Sig #2)  
 Misc :  
 ALS Vial : 30 Sample Multiplier: 1

Instrument :  
 ECD\_L  
 ClientSampleId :  
 TP-12-D

Integration File signal 1: autoint1.e  
 Integration File signal 2: autoint2.e  
 Quant Time: Jul 27 22:57:42 2018  
 Quant Method : Z:\PESTPCBSRV\HPCHEM1\ECD\_L\methods\PL071318.M  
 Quant Title : GC Extractables  
 QLast Update : Sat Jul 14 00:12:12 2018  
 Response via : Initial Calibration  
 Integrator: ChemStation

Volume Inj. : 2 µl  
 Signal #1 Phase : ZB-MR1 Signal #2 Phase: ZB-MR2  
 Signal #1 Info : 30M x 0.32mm x0.5 Signal #2 Info : 30M x 0.32mm x0.25µm

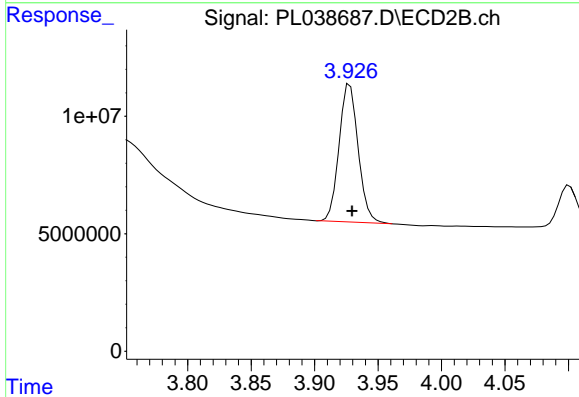




#1 Tetrachloro-m-xylene

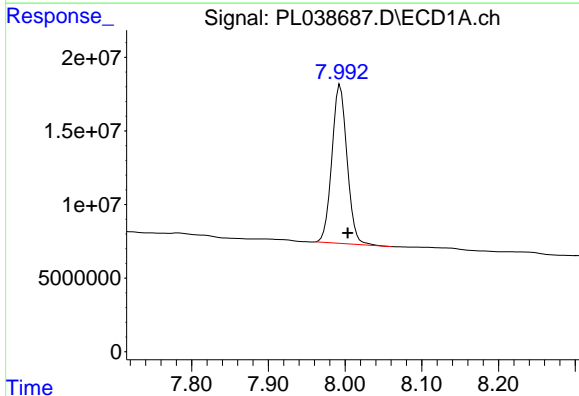
R.T.: 3.325 min  
 Delta R.T.: -0.004 min  
 Response: 162979091  
 Conc: 21.89 ng/ml

Instrument :  
 ECD\_L  
 ClientSampleId :  
 TP-12-D



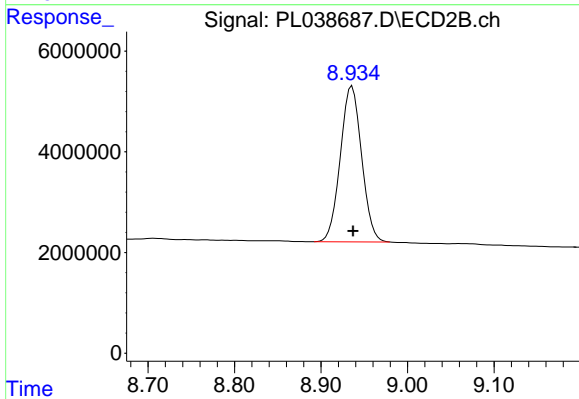
#1 Tetrachloro-m-xylene

R.T.: 3.928 min  
 Delta R.T.: -0.002 min  
 Response: 61370357  
 Conc: 23.38 ng/ml



#28 Decachlorobiphenyl

R.T.: 7.994 min  
 Delta R.T.: -0.010 min  
 Response: 147353359  
 Conc: 19.42 ng/ml



#28 Decachlorobiphenyl

R.T.: 8.936 min  
 Delta R.T.: -0.001 min  
 Response: 52723984  
 Conc: 21.57 ng/ml