

Data Path : Z:\pestpcbsrv\HPCHEM1\ECD_L\Data\PL072921\
 Data File : PL068535.D
 Signal(s) : Signal #1: ECD1A.ch Signal #2: ECD2B.ch
 Acq On : 29 Jul 2021 08:22
 Operator : AR\AJ
 Sample : HEXANE
 Misc :
 ALS Vial : 1 Sample Multiplier: 1

Instrument :
 ECD_L
 ClientSampleId :
 HEXANE

Integration File signal 1: autoint1.e
 Integration File signal 2: autoint2.e
 Quant Time: Jul 30 01:14:05 2021
 Quant Method : Z:\pestpcbsrv\HPCHEM1\ECD_L\methods\PL071921.M
 Quant Title : GC Extractables
 QLast Update : Tue Jul 20 11:44:21 2021
 Response via : Initial Calibration
 Integrator: ChemStation

Volume Inj. : 1 µl
 Signal #1 Phase : ZB-MR2 Signal #2 Phase: ZB-MR1
 Signal #1 Info : 30M x 0.32mm x0.2 Signal #2 Info : 30M x 0.32mm x0.5µm

Compound	RT#1	RT#2	Resp#1	Resp#2	ng/ml	ng/ml
----------	------	------	--------	--------	-------	-------

System Monitoring Compounds

Target Compounds

4) MA	Heptachlor	6.163f	0.000	854640	0	1.402	N.D.	#
6) B	beta-BHC	6.163	0.000	854640	0	2.921	N.D.	#
11) B	alpha-Chl...	0.000	8.401f	0	12363	N.D.	0.011	#
12) B	4,4'-DDE	0.000	8.587f	0	28886	N.D.	0.028	#
13) MA	Dieldrin	0.000	8.732	0	112754	N.D.	0.106	#
15) B	Endosulfa...	0.000	9.218f	0	157675	N.D.	0.174	#
17) MA	4,4'-DDT	0.000	9.452f	0	42936	N.D.	0.045	#
18) B	Endrin al...	0.000	9.363f	0	69103	N.D.	0.096	#
20) A	Methoxychlor	0.000	9.922	0	158083	N.D.	0.311	#
21) B	Endrin ke...	0.000	10.067	0	32972	N.D.	0.033	#
26)	Chlordane-4	0.000	8.401	0	12363	N.D.	0.066	#

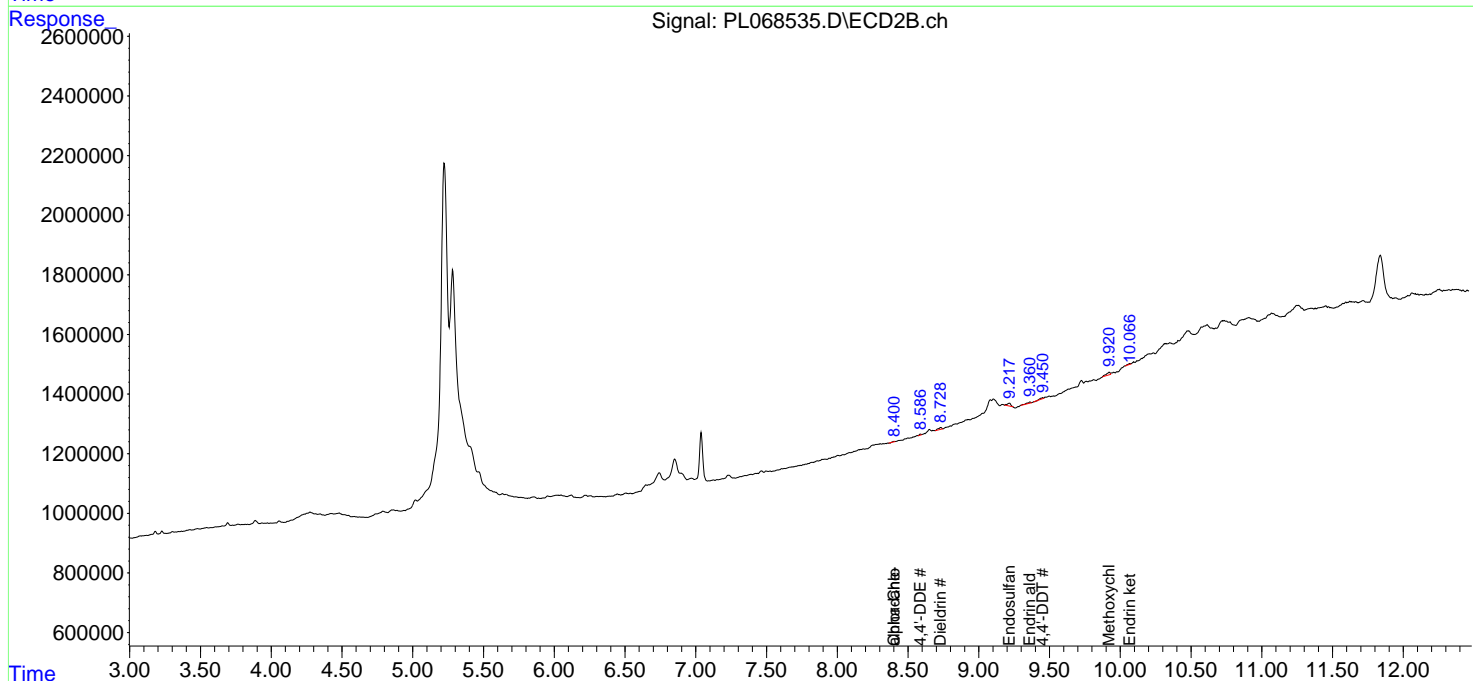
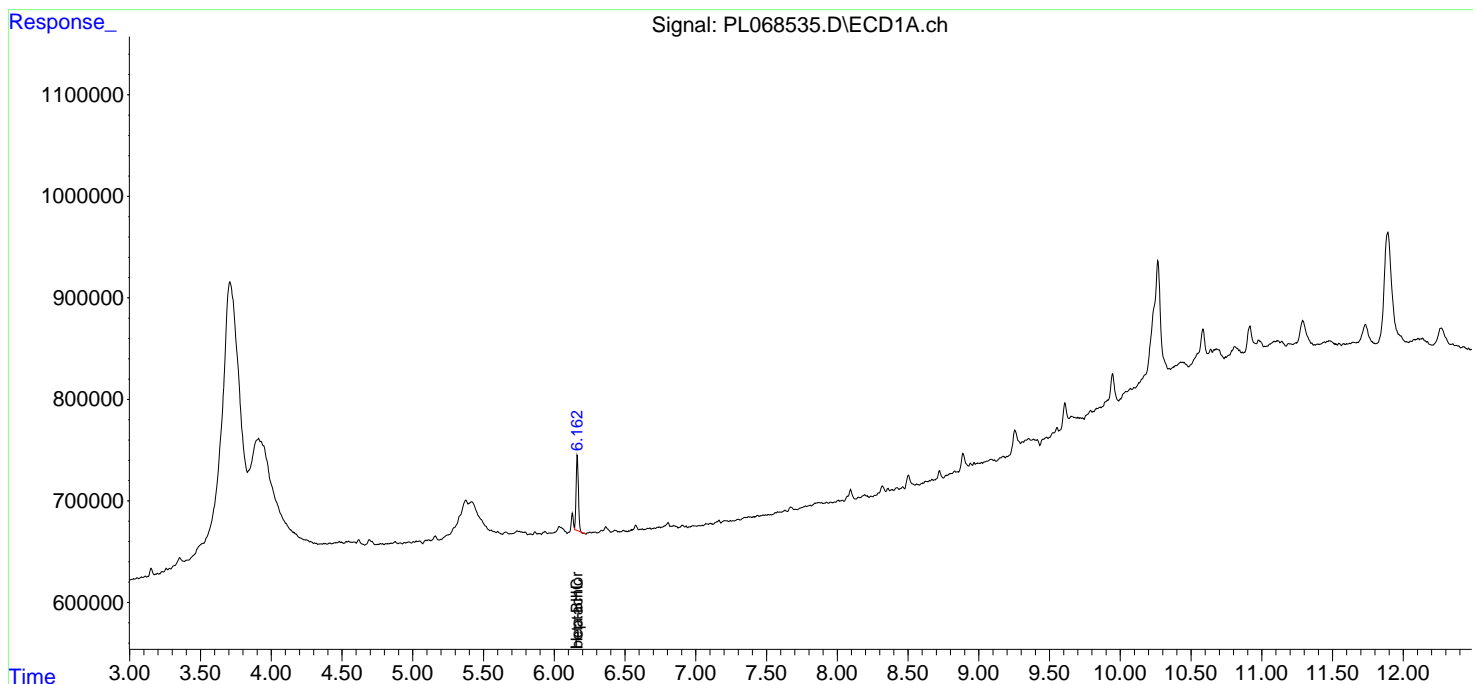
(f)=RT Delta > 1/2 Window (#)=Amounts differ by > 25% (m)=manual int.

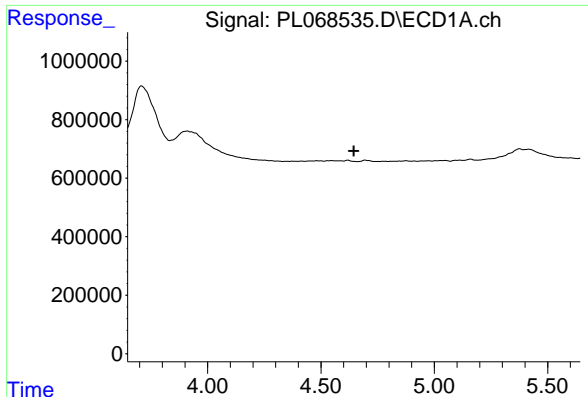
Data Path : Z:\pestpcbsrv\HPCHEM1\ECD_L\Data\PL072921\
 Data File : PL068535.D
 Signal(s) : Signal #1: ECD1A.ch Signal #2: ECD2B.ch
 Acq On : 29 Jul 2021 08:22
 Operator : AR\AJ
 Sample : HEXANE
 Misc :
 ALS Vial : 1 Sample Multiplier: 1

Instrument :
 ECD_L
 Client Sampled :
 HEXANE

Integration File signal 1: autoint1.e
 Integration File signal 2: autoint2.e
 Quant Time: Jul 30 01:14:05 2021
 Quant Method : Z:\pestpcbsrv\HPCHEM1\ECD_L\methods\PL071921.M
 Quant Title : GC Extractables
 QLast Update : Tue Jul 20 11:44:21 2021
 Response via : Initial Calibration
 Integrator: ChemStation

Volume Inj. : 1 µl
 Signal #1 Phase : ZB-MR2 Signal #2 Phase: ZB-MR1
 Signal #1 Info : 30M x 0.32mm x0.2 Signal #2 Info : 30M x 0.32mm x0.5µm

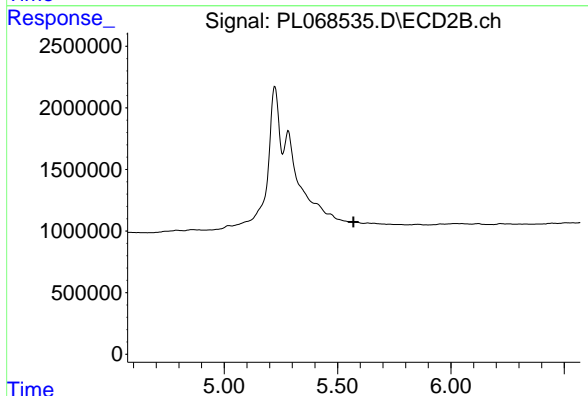




#1 Tetrachloro-m-xylene

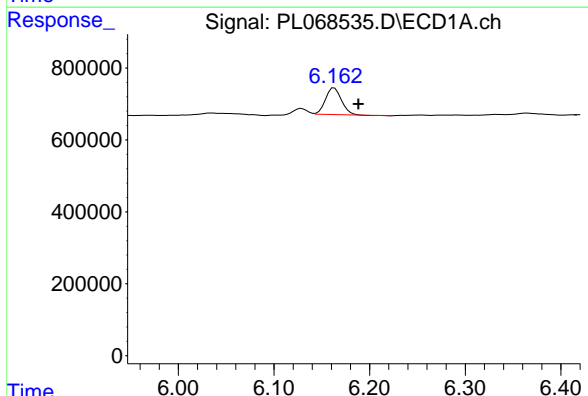
R.T.: 0.000 min
 Exp R.T. : 4.645 min
 Response: 0
 Conc: N.D.

Instrument :
 ECD_L
 ClientSampled :
 HEXANE



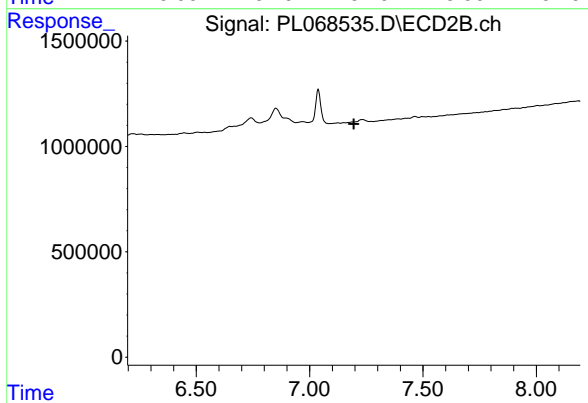
#1 Tetrachloro-m-xylene

R.T.: 0.000 min
 Exp R.T. : 5.571 min
 Response: 0
 Conc: N.D.



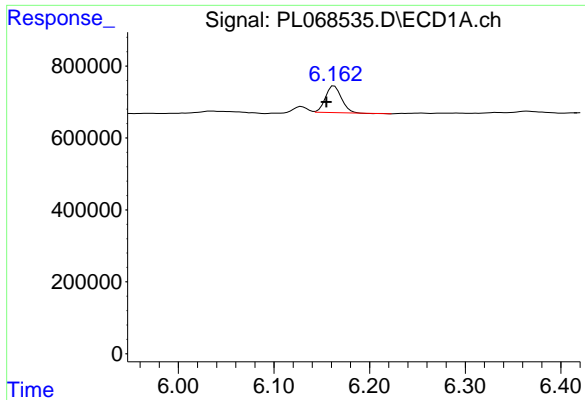
#4 Heptachlor

R.T.: 6.163 min
 Delta R.T.: -0.025 min
 Response: 854640
 Conc: 1.40 ng/ml



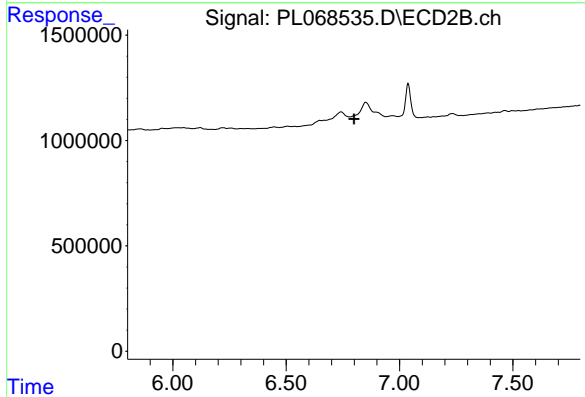
#4 Heptachlor

R.T.: 0.000 min
 Exp R.T. : 7.195 min
 Response: 0
 Conc: N.D.

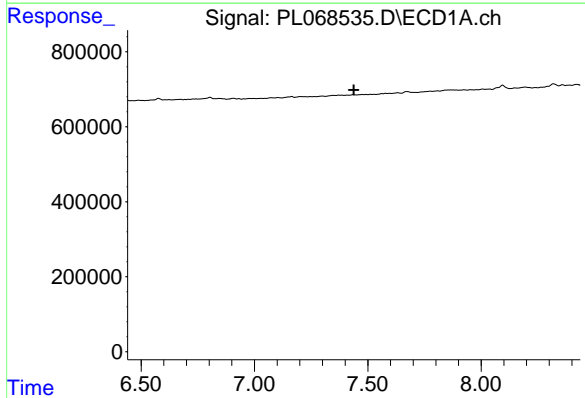


#6 beta-BHC
 R.T.: 6.163 min
 Delta R.T.: 0.008 min
 Response: 854640
 Conc: 2.92 ng/ml

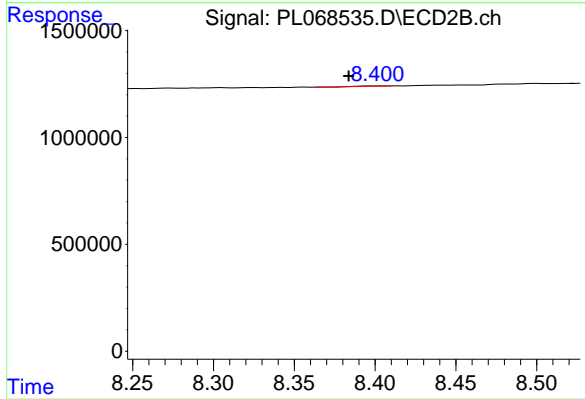
Instrument :
 ECD_L
 ClientSampleId :
 HEXANE



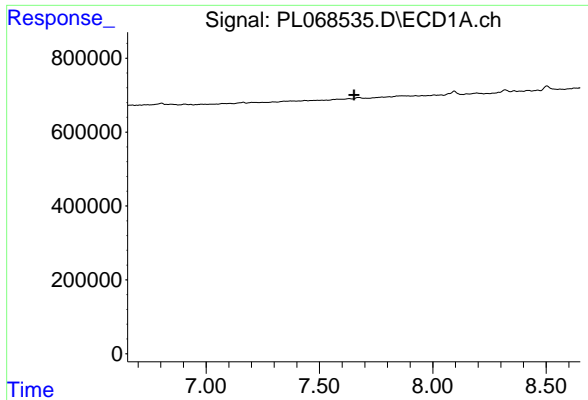
#6 beta-BHC
 R.T.: 0.000 min
 Exp R.T. : 6.799 min
 Response: 0
 Conc: N.D.



#11 alpha-Chlordane
 R.T.: 0.000 min
 Exp R.T. : 7.438 min
 Response: 0
 Conc: N.D.

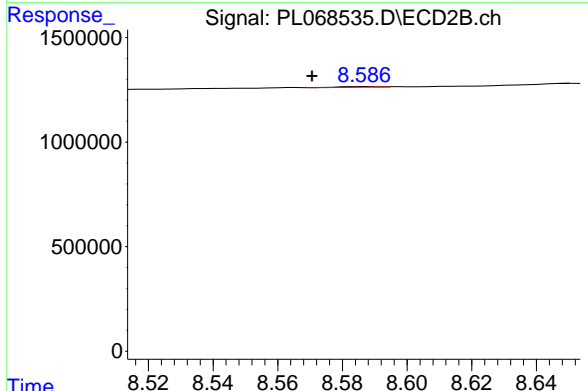


#11 alpha-Chlordane
 R.T.: 8.401 min
 Delta R.T.: 0.018 min
 Response: 12363
 Conc: 0.01 ng/ml

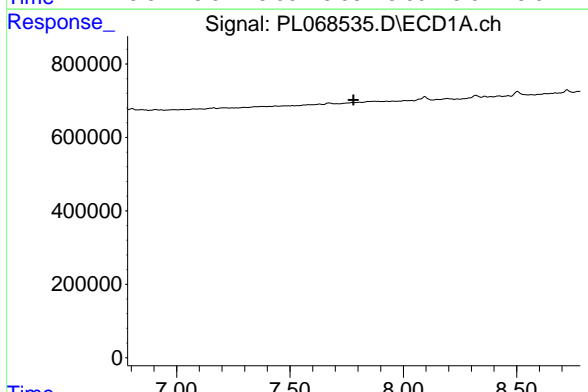


#12 4,4'-DDE
 R.T.: 0.000 min
 Exp R.T.: 7.653 min
 Response: 0
 Conc: N.D.

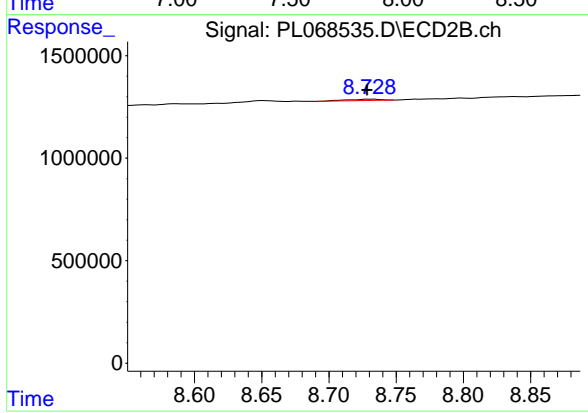
Instrument :
 ECD_L
 ClientSampleId :
 HEXANE



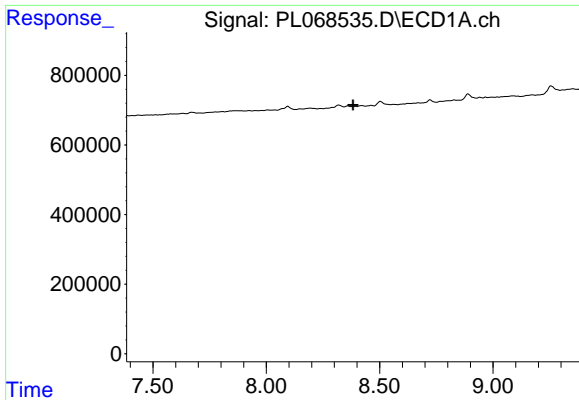
#12 4,4'-DDE
 R.T.: 8.587 min
 Delta R.T.: 0.017 min
 Response: 28886
 Conc: 0.03 ng/ml



#13 Dieldrin
 R.T.: 0.000 min
 Exp R.T.: 7.781 min
 Response: 0
 Conc: N.D.



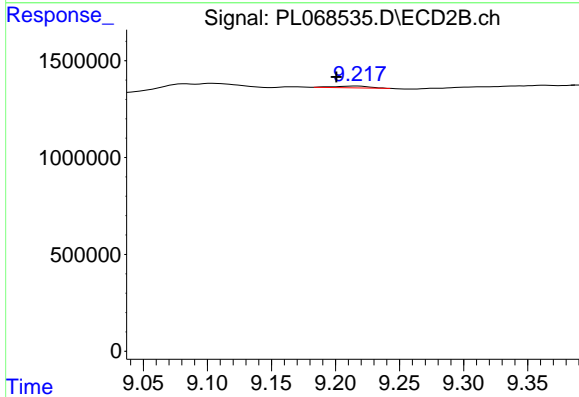
#13 Dieldrin
 R.T.: 8.732 min
 Delta R.T.: 0.004 min
 Response: 112754
 Conc: 0.11 ng/ml



#15 Endosulfan II

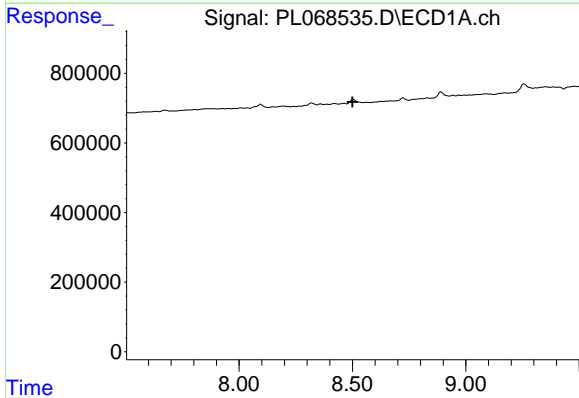
R.T.: 0.000 min
 Exp R.T. : 8.382 min
 Response: 0
 Conc: N.D.

Instrument :
 ECD_L
 ClientSampleId :
 HEXANE



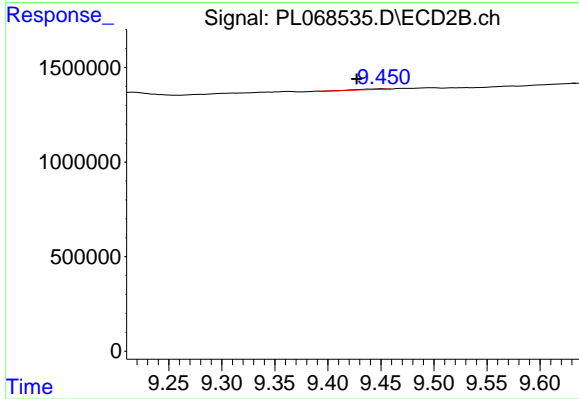
#15 Endosulfan II

R.T.: 9.218 min
 Delta R.T.: 0.017 min
 Response: 157675
 Conc: 0.17 ng/ml



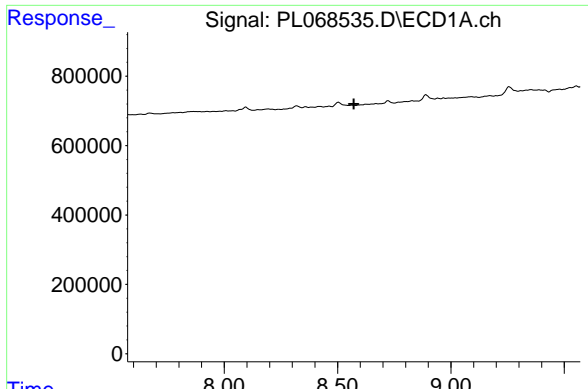
#17 4,4'-DDT

R.T.: 0.000 min
 Exp R.T. : 8.501 min
 Response: 0
 Conc: N.D.



#17 4,4'-DDT

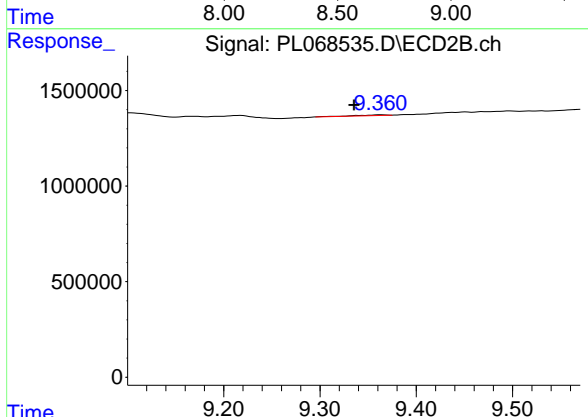
R.T.: 9.452 min
 Delta R.T.: 0.024 min
 Response: 42936
 Conc: 0.05 ng/ml



#18 Endrin aldehyde

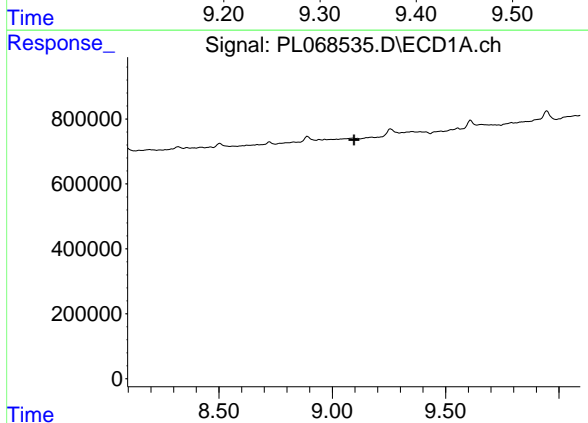
R.T.: 0.000 min
 Exp R.T. : 8.571 min
 Response: 0
 Conc: N.D.

Instrument :
 ECD_L
 ClientSampleId :
 HEXANE



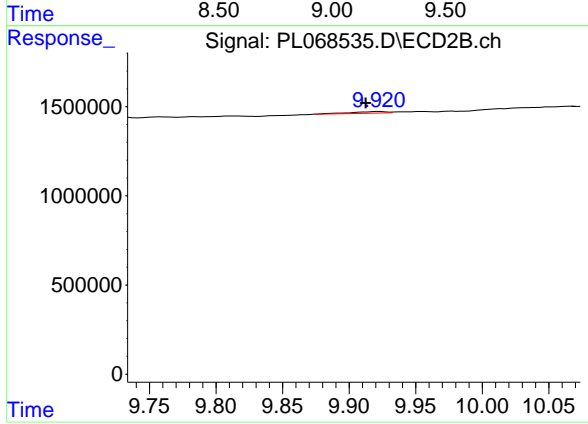
#18 Endrin aldehyde

R.T.: 9.363 min
 Delta R.T.: 0.027 min
 Response: 69103
 Conc: 0.10 ng/ml



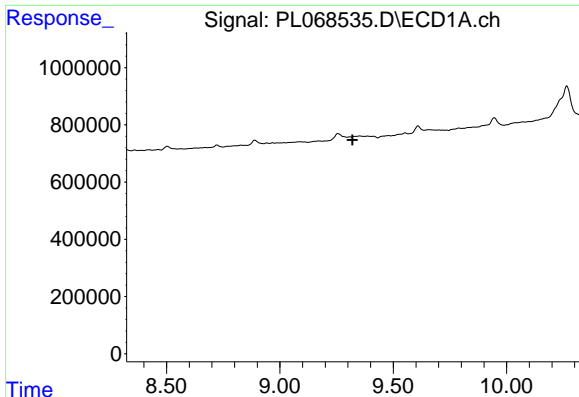
#20 Methoxychlor

R.T.: 0.000 min
 Exp R.T. : 9.096 min
 Response: 0
 Conc: N.D.



#20 Methoxychlor

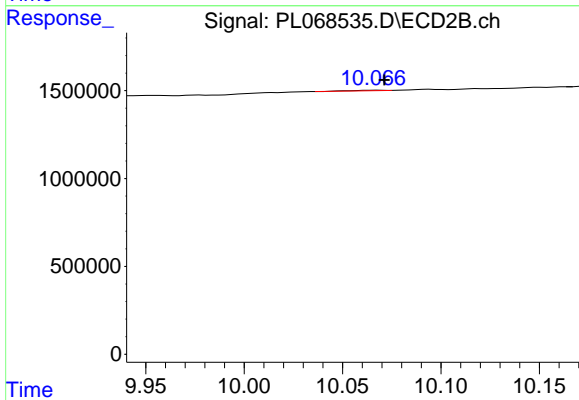
R.T.: 9.922 min
 Delta R.T.: 0.010 min
 Response: 158083
 Conc: 0.31 ng/ml



#21 Endrin ketone

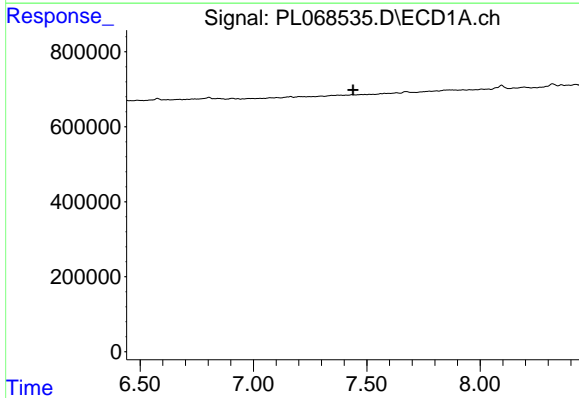
R.T.: 0.000 min
 Exp R.T. : 9.320 min
 Response: 0
 Conc: N.D.

Instrument :
 ECD_L
 ClientSampleId :
 HEXANE



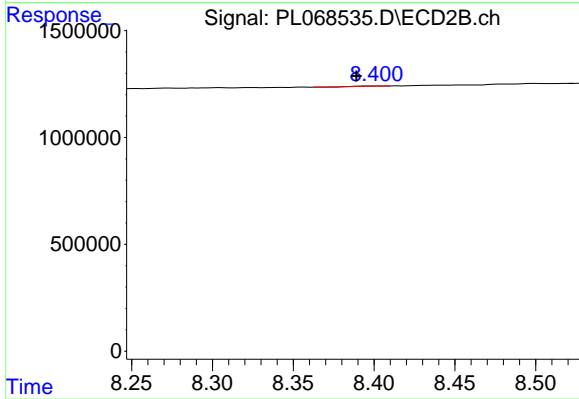
#21 Endrin ketone

R.T.: 10.067 min
 Delta R.T.: -0.004 min
 Response: 32972
 Conc: 0.03 ng/ml



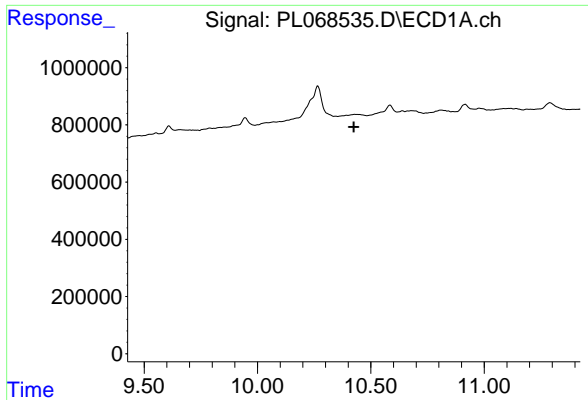
#26 Chlordane-4

R.T.: 0.000 min
 Exp R.T. : 7.440 min
 Response: 0
 Conc: N.D.



#26 Chlordane-4

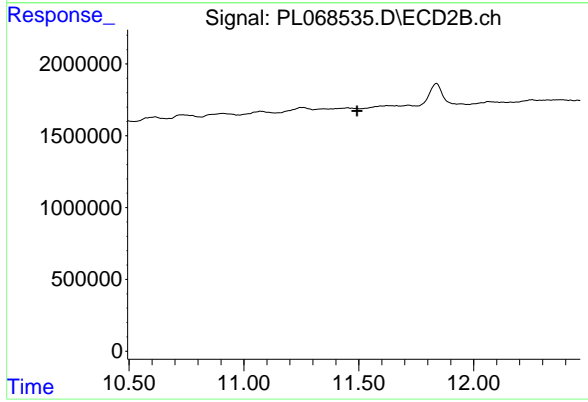
R.T.: 8.401 min
 Delta R.T.: 0.012 min
 Response: 12363
 Conc: 0.07 ng/ml



#28 Decachlorobiphenyl

R.T.: 0.000 min
Exp R.T. : 10.424 min
Response: 0
Conc: N.D.

Instrument :
ECD_L
ClientSampleId :
HEXANE



#28 Decachlorobiphenyl

R.T.: 0.000 min
Exp R.T. : 11.492 min
Response: 0
Conc: N.D.