

Data Path : Z:\pestpcbsrv\HPCHEM1\ECD_L\Data\PL072921\
 Data File : PL068537.D
 Signal(s) : Signal #1: ECD1A.ch Signal #2: ECD2B.ch
 Acq On : 29 Jul 2021 08:55
 Operator : AR\AJ
 Sample : PEM
 Misc :
 ALS Vial : 3 Sample Multiplier: 1

Instrument :
 ECD_L
 ClientSampleId :

Integration File signal 1: autoint1.e
 Integration File signal 2: autoint2.e
 Quant Time: Jul 30 01:14:44 2021
 Quant Method : Z:\pestpcbsrv\HPCHEM1\ECD_L\methods\PL071921.M
 Quant Title : GC Extractables
 QLast Update : Tue Jul 20 11:44:21 2021
 Response via : Initial Calibration
 Integrator: ChemStation

Volume Inj. : 1 µl
 Signal #1 Phase : ZB-MR2 Signal #2 Phase: ZB-MR1
 Signal #1 Info : 30M x 0.32mm x0.2 Signal #2 Info : 30M x 0.32mm x0.5µm

| | Compound | RT#1 | RT#2 | Resp#1 | Resp#2 | ng/ml | ng/ml |
|-----------------------------|-----------------|--------|--------|----------|----------|---------|---------|
| ----- | | | | | | | |
| System Monitoring Compounds | | | | | | | |
| 1) | SA Tetrachlo... | 4.643 | 5.571 | 9671234 | 20473926 | 22.534 | 20.064 |
| 28) | SA Decachlor... | 10.416 | 11.492 | 12206907 | 18651395 | 21.704 | 20.910 |
| Target Compounds | | | | | | | |
| 2) | A alpha-BHC | 5.349 | 6.150 | 5737133 | 12581051 | 9.801 | 9.253 |
| 3) | MA gamma-BHC... | 5.772 | 6.547 | 6004806 | 12162552 | 10.564 | 9.427 |
| 4) | MA Heptachlor | 0.000 | 7.178f | 0 | 88744 | N.D. | 0.068 # |
| 6) | B beta-BHC | 6.152 | 6.799 | 4175249 | 6891032 | 14.268 | 9.754 # |
| 8) | B Heptachlo... | 0.000 | 8.031 | 0 | 57834 | N.D. | 0.051 # |
| 9) | A Endosulfan I | 0.000 | 8.446 | 0 | 7710 | N.D. | 0.007 # |
| 10) | B gamma-Chl... | 0.000 | 8.282f | 0 | 322353 | N.D. | 0.286 # |
| 11) | B alpha-Chl... | 0.000 | 8.410f | 0 | 67181 | N.D. | 0.060 # |
| 12) | B 4,4'-DDE | 0.000 | 8.570 | 0 | 333675 | N.D. | 0.324 # |
| 13) | MA Dieldrin | 0.000 | 8.728 | 0 | 48173 | N.D. | 0.045 # |
| 14) | MA Endrin | 8.067 | 8.968 | 25248579 | 41813813 | 50.488 | 46.763 |
| 15) | B Endosulfa... | 8.404f | 9.215 | 386542 | 819177 | 0.783 | 0.904 |
| 16) | A 4,4'-DDD | 8.233 | 9.109 | 3733256 | 6853776 | 8.358 | 8.049 |
| 17) | MA 4,4'-DDT | 8.494 | 9.428 | 46402727 | 78365654 | 92.511 | 83.028 |
| 18) | B Endrin al... | 8.566 | 9.335 | 654975 | 813115 | 1.653 | 1.128 # |
| 20) | A Methoxychlor | 9.089 | 9.912 | 63518789 | 98463435 | 203.060 | 193.812 |
| 21) | B Endrin ke... | 9.315 | 10.071 | 2798693 | 3497148 | 4.727 | 3.507 # |
| 23) | Chlordane-1 | 0.000 | 6.970 | 0 | 382455 | N.D. | 9.441 # |
| 24) | Chlordane-2 | 0.000 | 7.520f | 0 | 18128 | N.D. | 0.436 # |
| 25) | Chlordane-3 | 0.000 | 8.282f | 0 | 322353 | N.D. | 2.081 # |
| 26) | Chlordane-4 | 0.000 | 8.410f | 0 | 67181 | N.D. | 0.358 # |
| 27) | Chlordane-5 | 8.404 | 0.000 | 386542 | 0 | 19.206 | N.D. # |

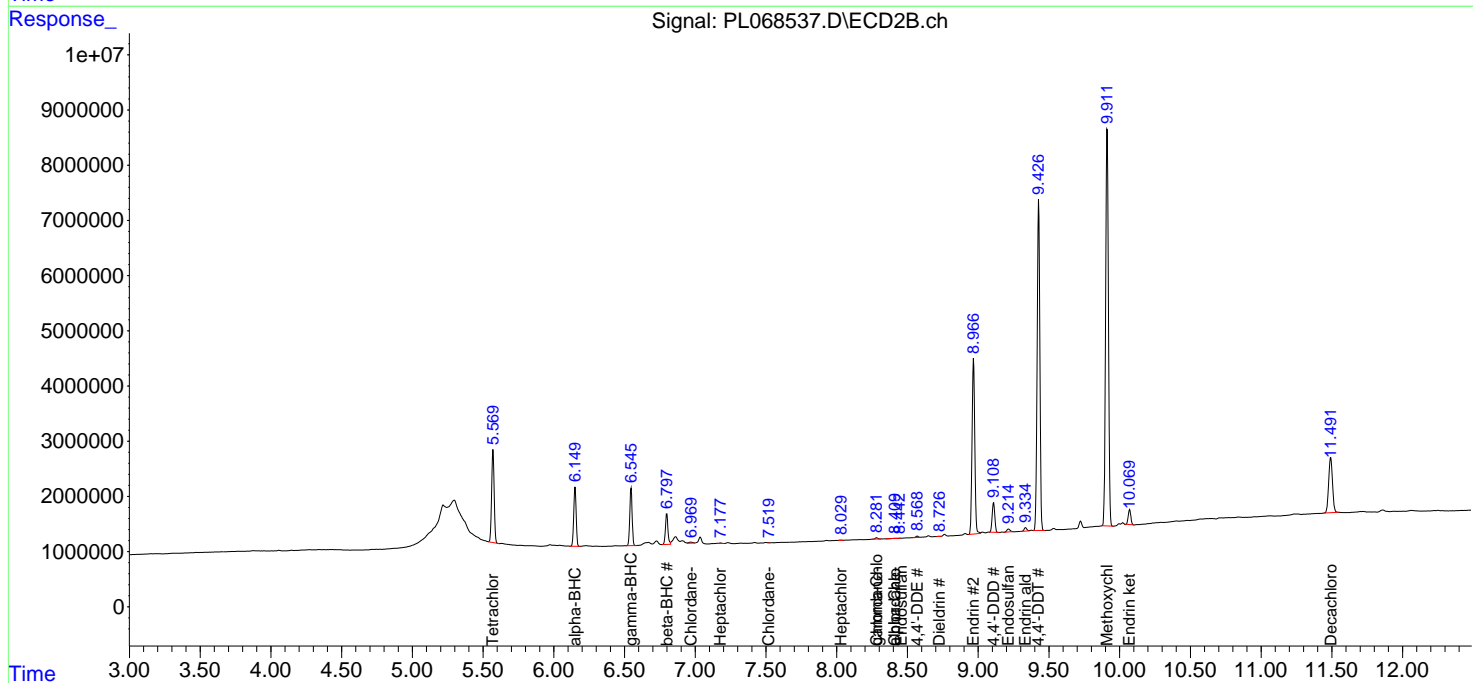
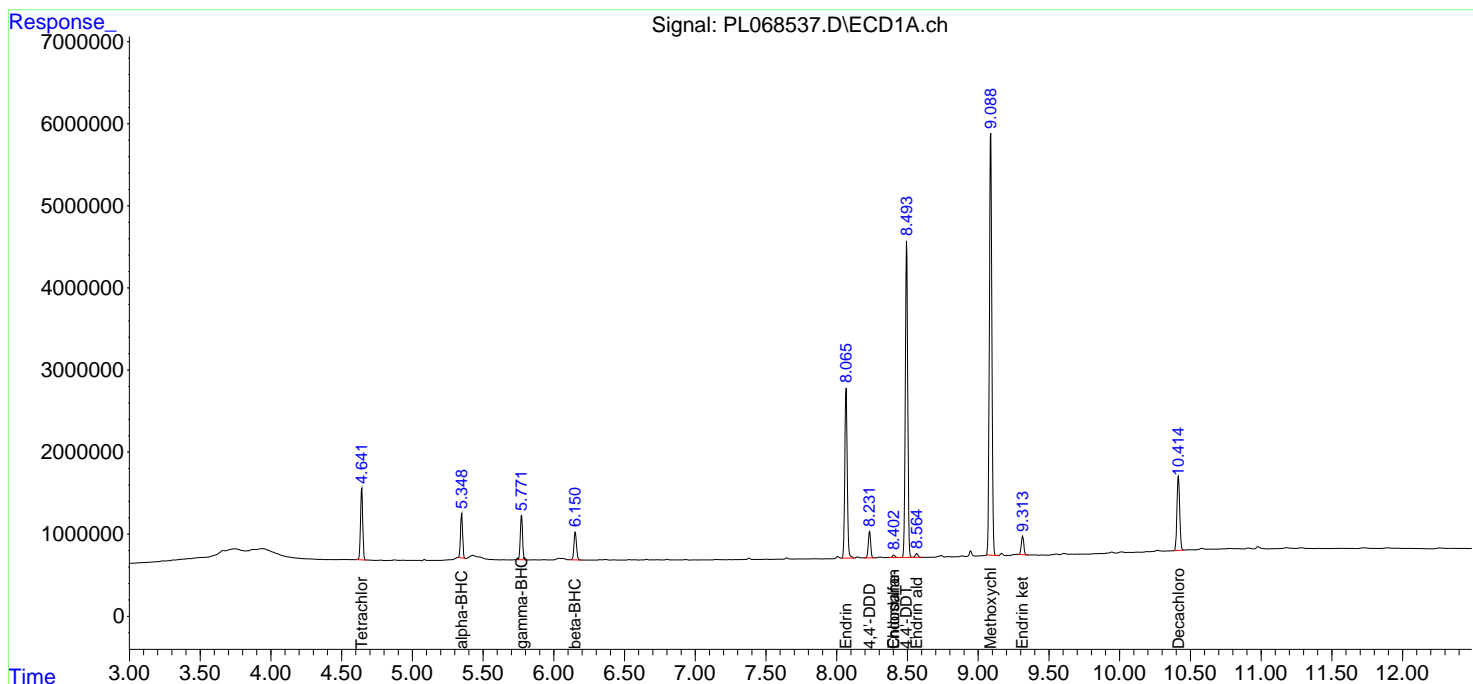
(f)=RT Delta > 1/2 Window (#)=Amounts differ by > 25% (m)=manual int.

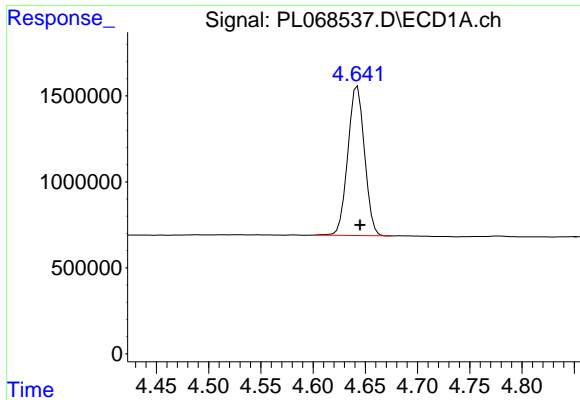
Data Path : Z:\pestpcbsrv\HPCHEM1\ECD_L\Data\PL072921\
 Data File : PL068537.D
 Signal(s) : Signal #1: ECD1A.ch Signal #2: ECD2B.ch
 Acq On : 29 Jul 2021 08:55
 Operator : AR\AJ
 Sample : PEM
 Misc :
 ALS Vial : 3 Sample Multiplier: 1

Instrument :
 ECD_L
 ClientSampled :

Integration File signal 1: autoint1.e
 Integration File signal 2: autoint2.e
 Quant Time: Jul 30 01:14:44 2021
 Quant Method : Z:\pestpcbsrv\HPCHEM1\ECD_L\methods\PL071921.M
 Quant Title : GC Extractables
 QLast Update : Tue Jul 20 11:44:21 2021
 Response via : Initial Calibration
 Integrator: ChemStation

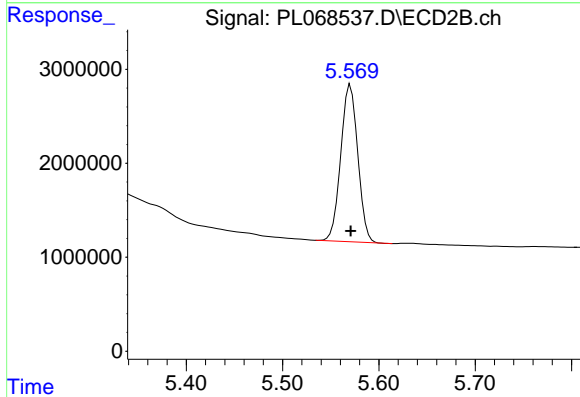
Volume Inj. : 1 µl
 Signal #1 Phase : ZB-MR2 Signal #2 Phase: ZB-MR1
 Signal #1 Info : 30M x 0.32mm x0.2 Signal #2 Info : 30M x 0.32mm x0.5µm



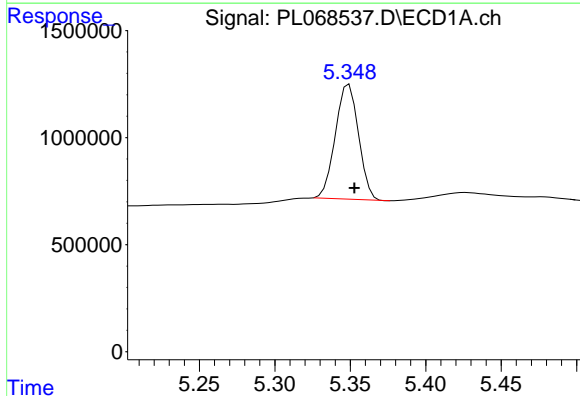


#1 Tetrachloro-m-xylene
 R.T.: 4.643 min
 Delta R.T.: -0.002 min
 Response: 9671234
 Conc: 22.53 ng/ml

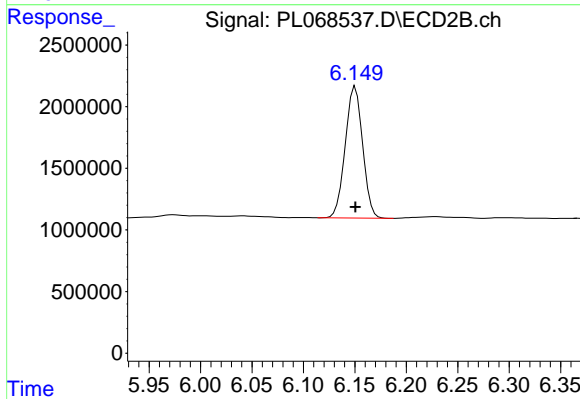
Instrument :
 ECD_L
 ClientSampleId :



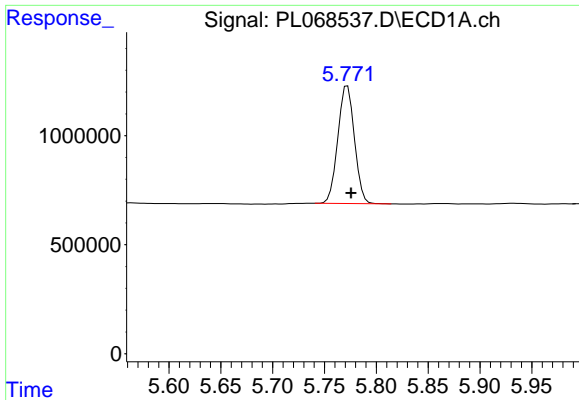
#1 Tetrachloro-m-xylene
 R.T.: 5.571 min
 Delta R.T.: 0.000 min
 Response: 20473926
 Conc: 20.06 ng/ml



#2 alpha-BHC
 R.T.: 5.349 min
 Delta R.T.: -0.003 min
 Response: 5737133
 Conc: 9.80 ng/ml



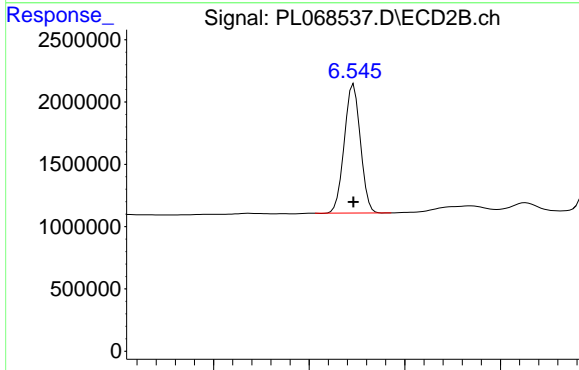
#2 alpha-BHC
 R.T.: 6.150 min
 Delta R.T.: 0.000 min
 Response: 12581051
 Conc: 9.25 ng/ml



#3 gamma-BHC (Lindane)

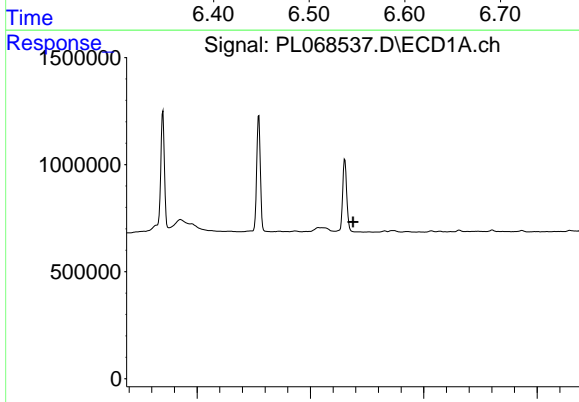
R.T.: 5.772 min
 Delta R.T.: -0.004 min
 Response: 6004806
 Conc: 10.56 ng/ml

Instrument :
 ECD_L
 ClientSampleId :



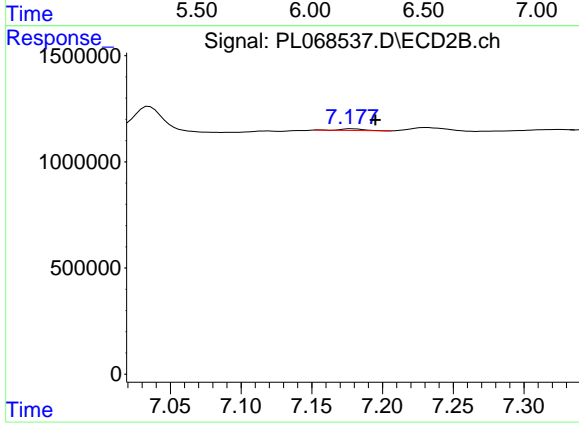
#3 gamma-BHC (Lindane)

R.T.: 6.547 min
 Delta R.T.: 0.000 min
 Response: 12162552
 Conc: 9.43 ng/ml



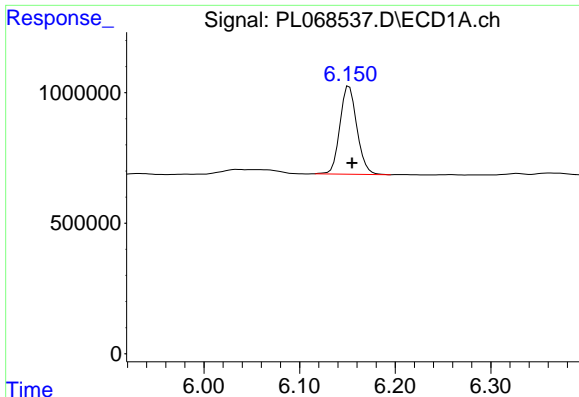
#4 Heptachlor

R.T.: 0.000 min
 Exp R.T. : 6.188 min
 Response: 0
 Conc: N.D.



#4 Heptachlor

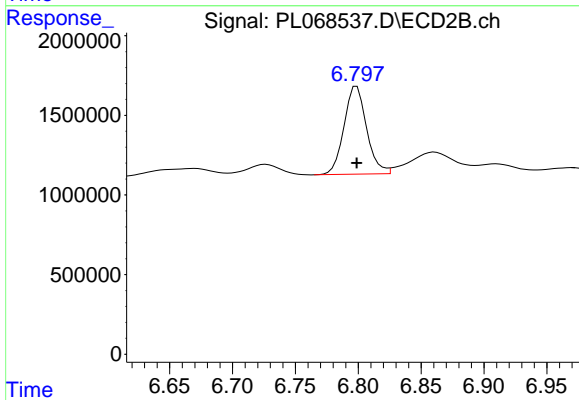
R.T.: 7.178 min
 Delta R.T.: -0.017 min
 Response: 88744
 Conc: 0.07 ng/ml



#6 beta-BHC

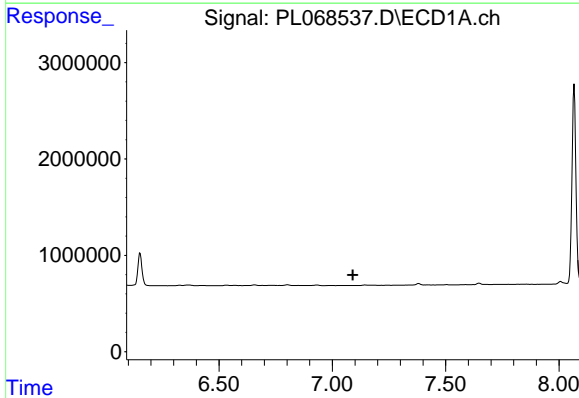
R.T.: 6.152 min
 Delta R.T.: -0.003 min
 Response: 4175249
 Conc: 14.27 ng/ml

Instrument :
 ECD_L
 ClientSampled :



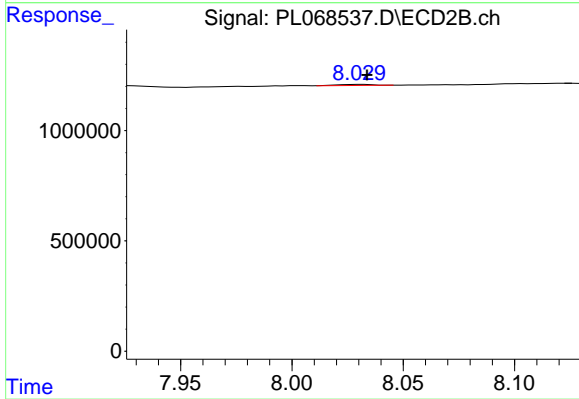
#6 beta-BHC

R.T.: 6.799 min
 Delta R.T.: 0.000 min
 Response: 6891032
 Conc: 9.75 ng/ml



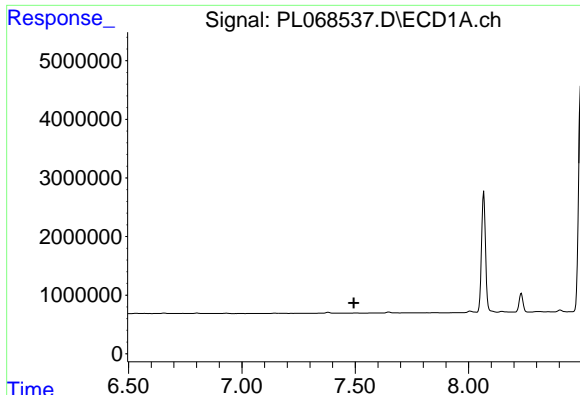
#8 Heptachlor epoxide

R.T.: 0.000 min
 Exp R.T. : 7.091 min
 Response: 0
 Conc: N.D.



#8 Heptachlor epoxide

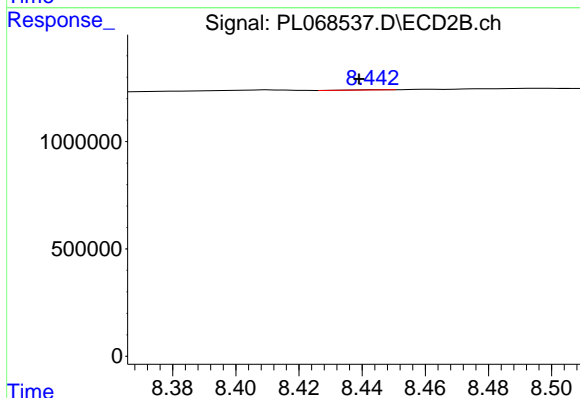
R.T.: 8.031 min
 Delta R.T.: -0.003 min
 Response: 57834
 Conc: 0.05 ng/ml



#9 Endosulfan I

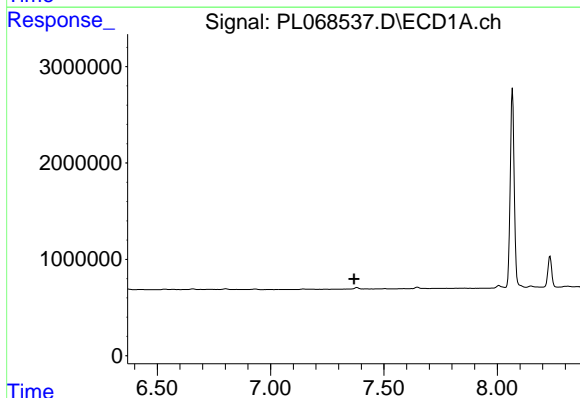
R.T.: 0.000 min
 Exp R.T. : 7.494 min
 Response: 0
 Conc: N.D.

Instrument :
 ECD_L
 ClientSampleId :



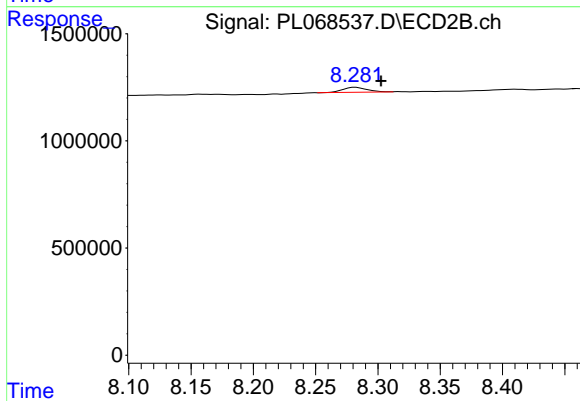
#9 Endosulfan I

R.T.: 8.446 min
 Delta R.T.: 0.007 min
 Response: 7710
 Conc: 0.01 ng/ml



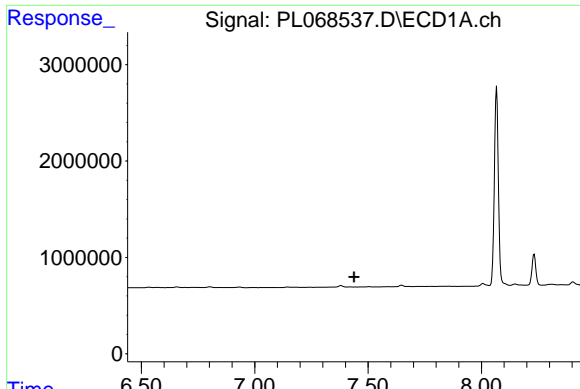
#10 gamma-Chlordane

R.T.: 0.000 min
 Exp R.T. : 7.369 min
 Response: 0
 Conc: N.D.



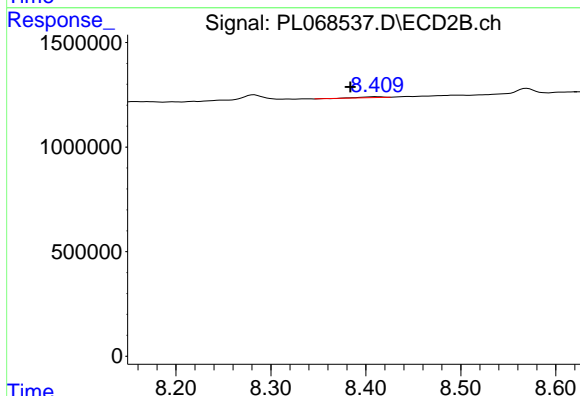
#10 gamma-Chlordane

R.T.: 8.282 min
 Delta R.T.: -0.020 min
 Response: 322353
 Conc: 0.29 ng/ml

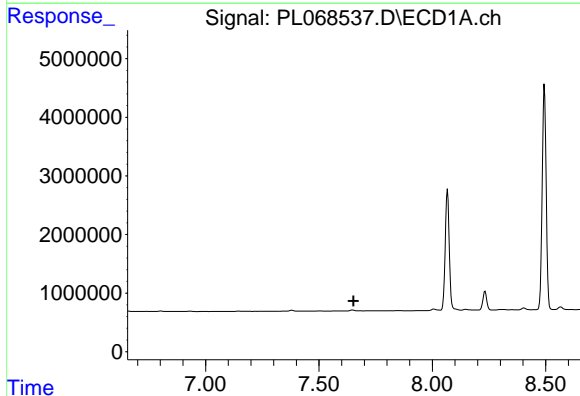


#11 alpha-Chlordane
 R.T.: 0.000 min
 Exp R.T. : 7.438 min
 Response: 0
 Conc: N.D.

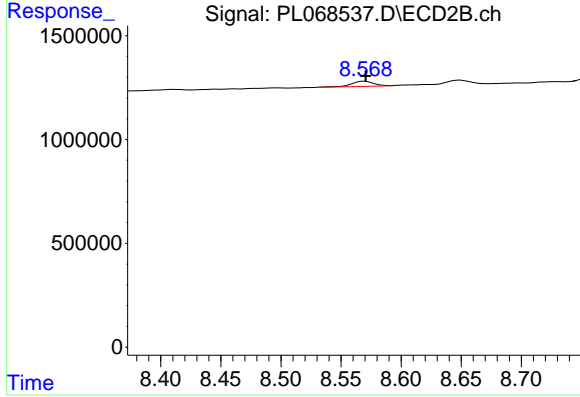
Instrument :
 ECD_L
 ClientSampleId :



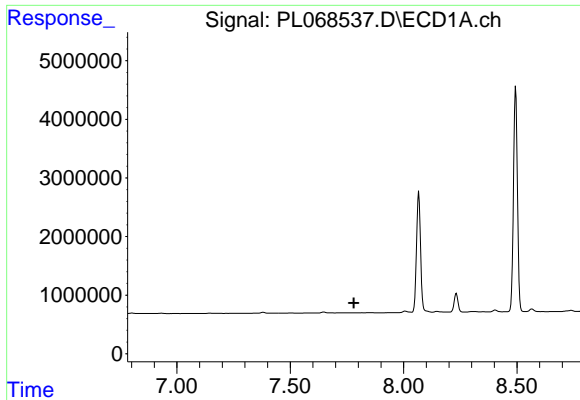
#11 alpha-Chlordane
 R.T.: 8.410 min
 Delta R.T.: 0.027 min
 Response: 67181
 Conc: 0.06 ng/ml



#12 4,4'-DDE
 R.T.: 0.000 min
 Exp R.T. : 7.653 min
 Response: 0
 Conc: N.D.

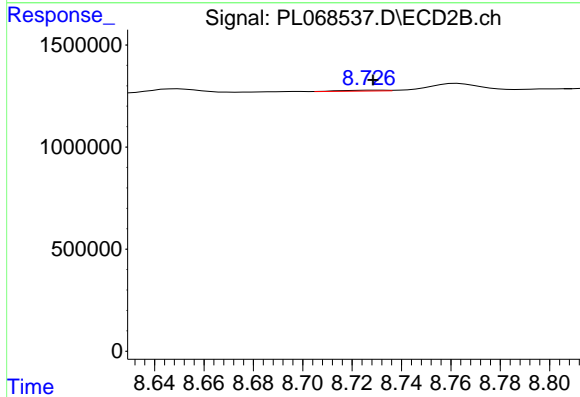


#12 4,4'-DDE
 R.T.: 8.570 min
 Delta R.T.: 0.000 min
 Response: 333675
 Conc: 0.32 ng/ml

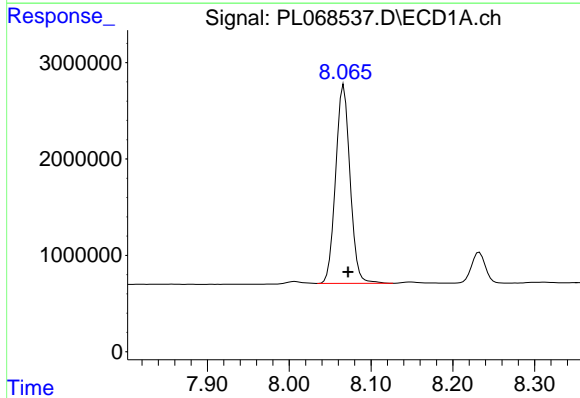


#13 Dieldrin
 R.T.: 0.000 min
 Exp R.T.: 7.781 min
 Response: 0
 Conc: N.D.

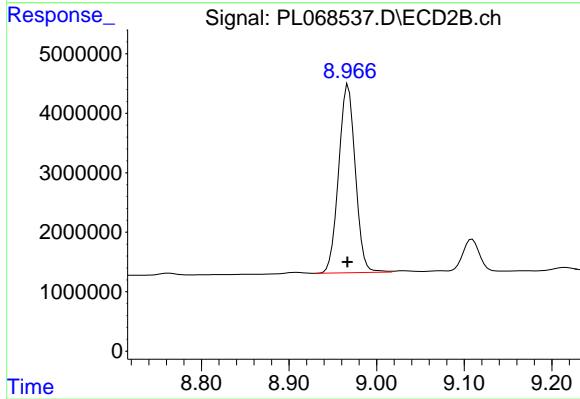
Instrument :
 ECD_L
 ClientSampled :



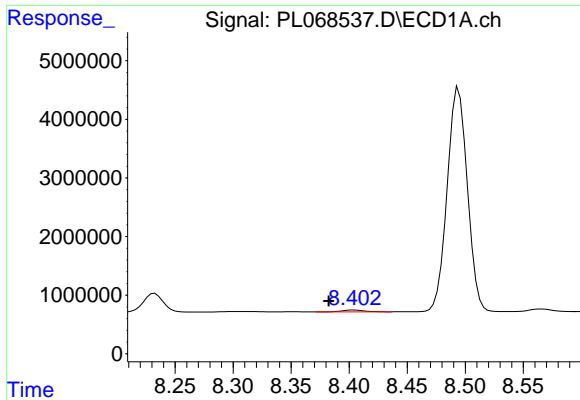
#13 Dieldrin
 R.T.: 8.728 min
 Delta R.T.: 0.000 min
 Response: 48173
 Conc: 0.05 ng/ml



#14 Endrin
 R.T.: 8.067 min
 Delta R.T.: -0.005 min
 Response: 25248579
 Conc: 50.49 ng/ml



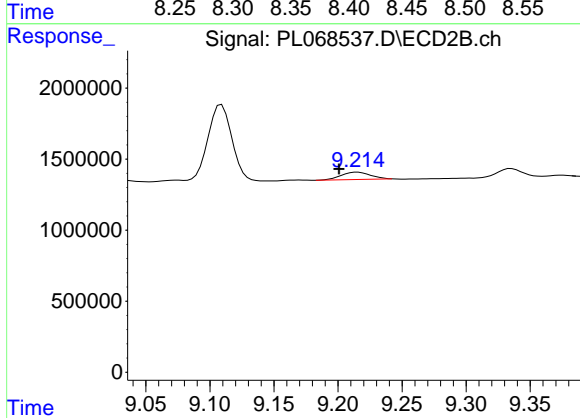
#14 Endrin
 R.T.: 8.968 min
 Delta R.T.: 0.001 min
 Response: 41813813
 Conc: 46.76 ng/ml



#15 Endosulfan II

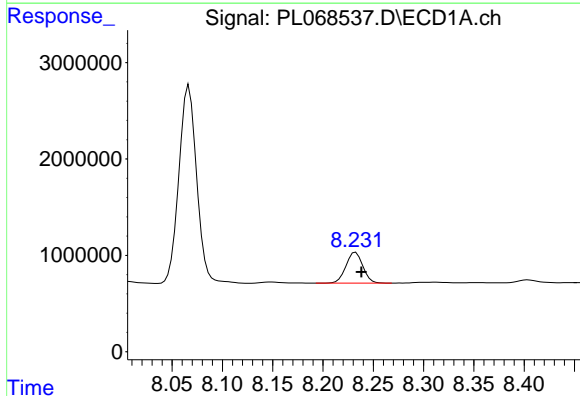
R.T.: 8.404 min
 Delta R.T.: 0.022 min
 Response: 386542
 Conc: 0.78 ng/ml

Instrument :
 ECD_L
 ClientSampled :



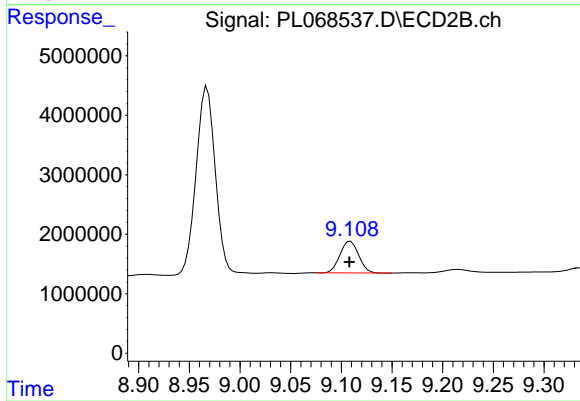
#15 Endosulfan II

R.T.: 9.215 min
 Delta R.T.: 0.014 min
 Response: 819177
 Conc: 0.90 ng/ml



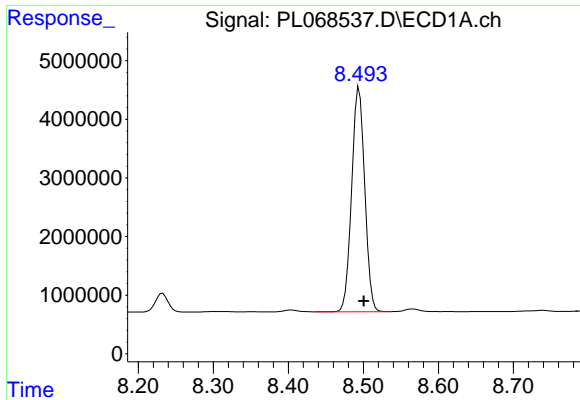
#16 4,4'-DDD

R.T.: 8.233 min
 Delta R.T.: -0.006 min
 Response: 3733256
 Conc: 8.36 ng/ml



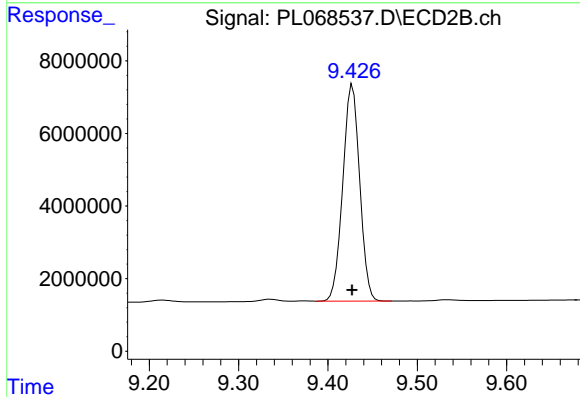
#16 4,4'-DDD

R.T.: 9.109 min
 Delta R.T.: 0.001 min
 Response: 6853776
 Conc: 8.05 ng/ml

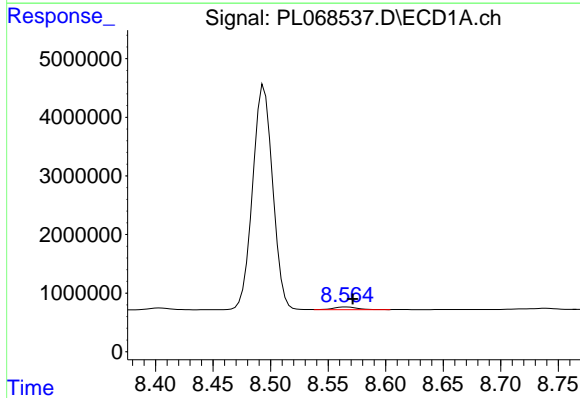


#17 4,4'-DDT
 R.T.: 8.494 min
 Delta R.T.: -0.006 min
 Response: 46402727
 Conc: 92.51 ng/ml

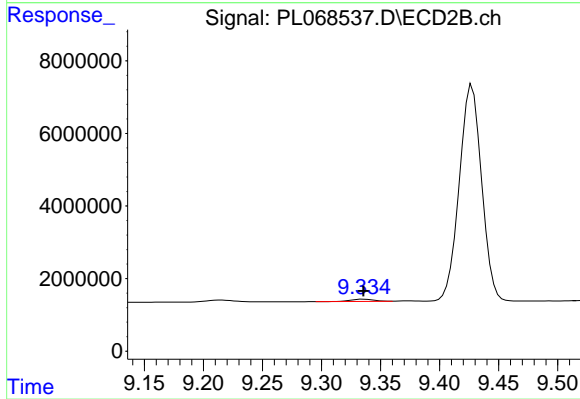
Instrument :
 ECD_L
 ClientSampled :



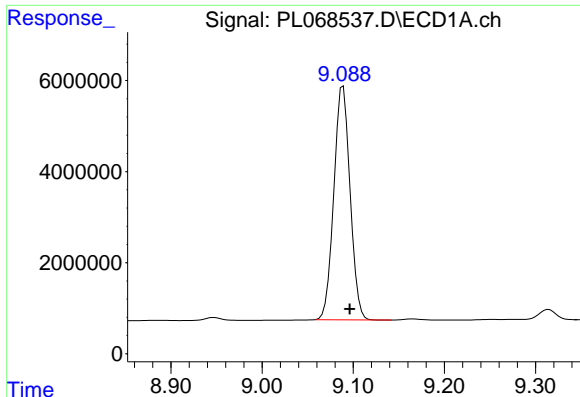
#17 4,4'-DDT
 R.T.: 9.428 min
 Delta R.T.: 0.000 min
 Response: 78365654
 Conc: 83.03 ng/ml



#18 Endrin aldehyde
 R.T.: 8.566 min
 Delta R.T.: -0.006 min
 Response: 654975
 Conc: 1.65 ng/ml



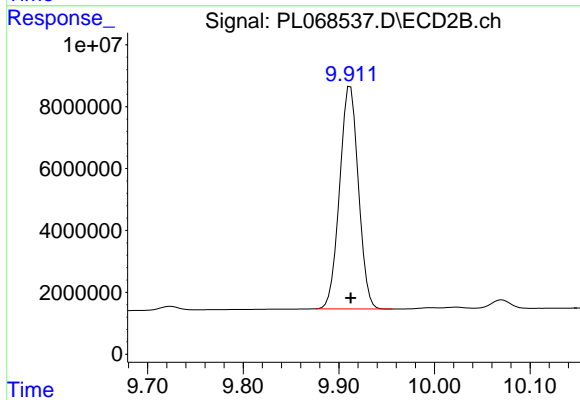
#18 Endrin aldehyde
 R.T.: 9.335 min
 Delta R.T.: 0.000 min
 Response: 813115
 Conc: 1.13 ng/ml



#20 Methoxychlor

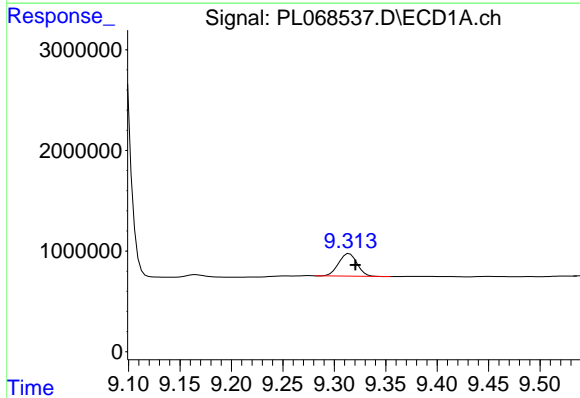
R.T.: 9.089 min
 Delta R.T.: -0.007 min
 Response: 63518789
 Conc: 203.06 ng/ml

Instrument :
 ECD_L
 ClientSampled :



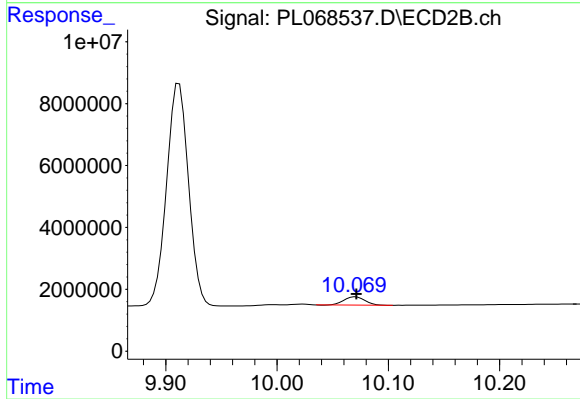
#20 Methoxychlor

R.T.: 9.912 min
 Delta R.T.: 0.000 min
 Response: 98463435
 Conc: 193.81 ng/ml



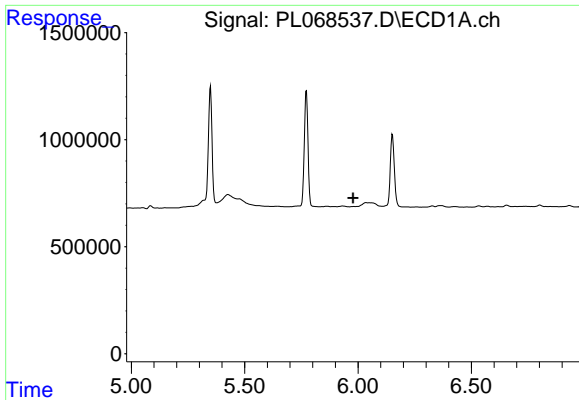
#21 Endrin ketone

R.T.: 9.315 min
 Delta R.T.: -0.006 min
 Response: 2798693
 Conc: 4.73 ng/ml



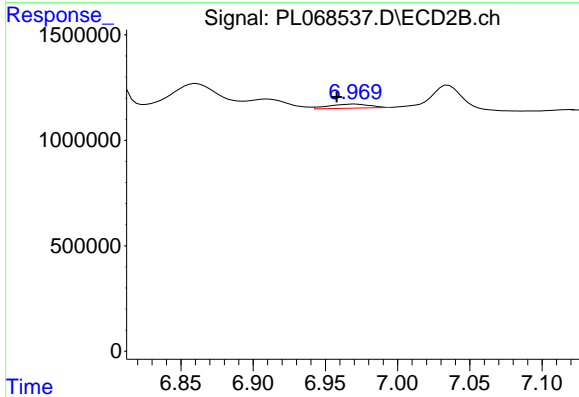
#21 Endrin ketone

R.T.: 10.071 min
 Delta R.T.: 0.000 min
 Response: 3497148
 Conc: 3.51 ng/ml

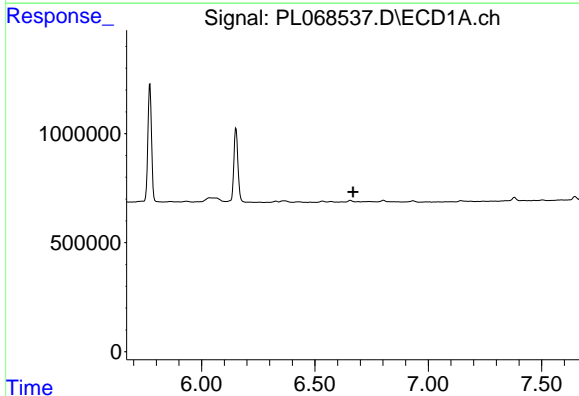


#23 Chlordane-1
 R.T.: 0.000 min
 Exp R.T. : 5.978 min
 Response: 0
 Conc: N.D.

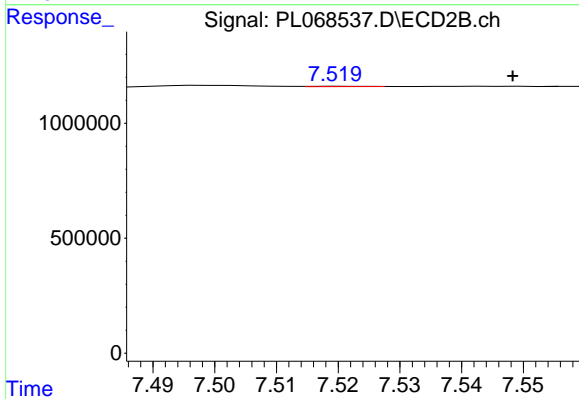
Instrument :
 ECD_L
 ClientSampleId :



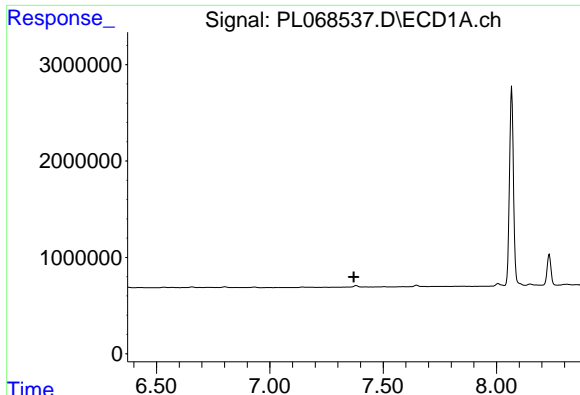
#23 Chlordane-1
 R.T.: 6.970 min
 Delta R.T.: 0.013 min
 Response: 382455
 Conc: 9.44 ng/ml



#24 Chlordane-2
 R.T.: 0.000 min
 Exp R.T. : 6.668 min
 Response: 0
 Conc: N.D.

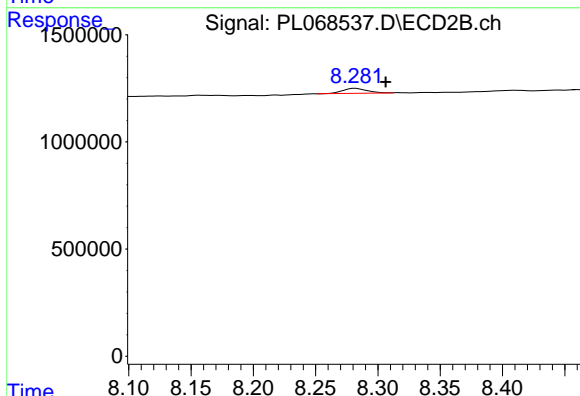


#24 Chlordane-2
 R.T.: 7.520 min
 Delta R.T.: -0.028 min
 Response: 18128
 Conc: 0.44 ng/ml

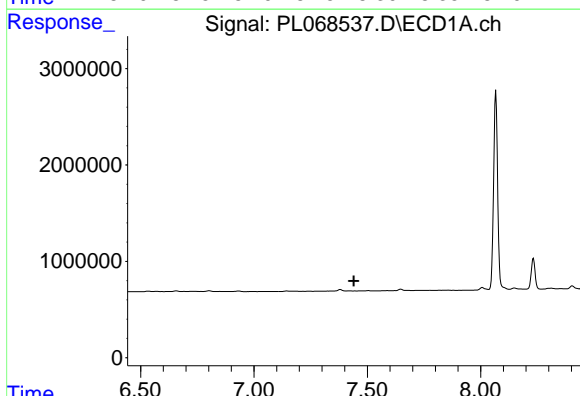


#25 Chlordane-3
 R.T.: 0.000 min
 Exp R.T. : 7.371 min
 Response: 0
 Conc: N.D.

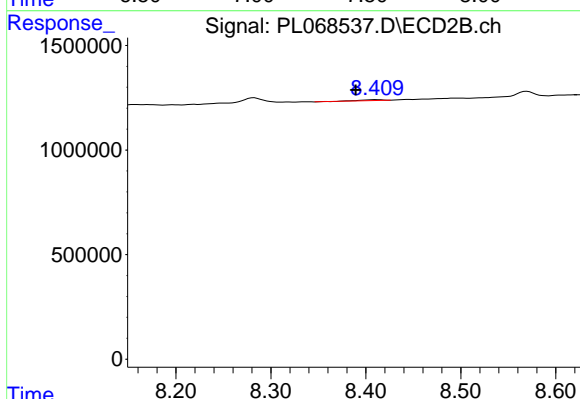
Instrument :
 ECD_L
 ClientSampled :



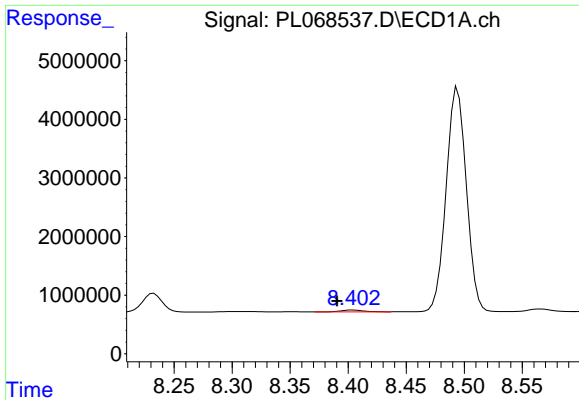
#25 Chlordane-3
 R.T.: 8.282 min
 Delta R.T.: -0.024 min
 Response: 322353
 Conc: 2.08 ng/ml



#26 Chlordane-4
 R.T.: 0.000 min
 Exp R.T. : 7.440 min
 Response: 0
 Conc: N.D.

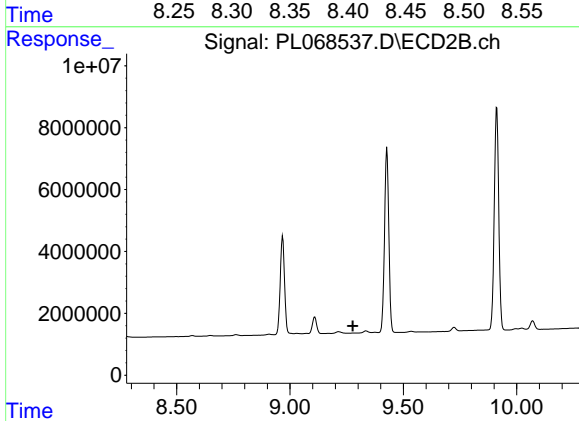


#26 Chlordane-4
 R.T.: 8.410 min
 Delta R.T.: 0.021 min
 Response: 67181
 Conc: 0.36 ng/ml

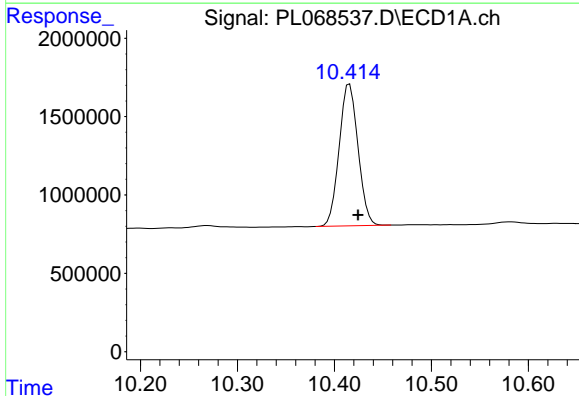


#27 Chlordane-5
 R.T.: 8.404 min
 Delta R.T.: 0.013 min
 Response: 386542
 Conc: 19.21 ng/ml

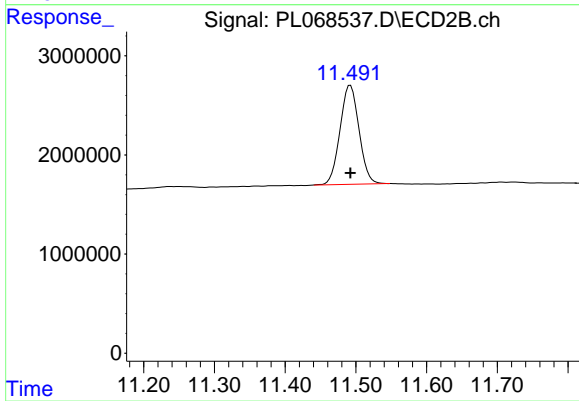
Instrument :
 ECD_L
 ClientSampled :



#27 Chlordane-5
 R.T.: 0.000 min
 Exp R.T. : 9.277 min
 Response: 0
 Conc: N.D.



#28 Decachlorobiphenyl
 R.T.: 10.416 min
 Delta R.T.: -0.009 min
 Response: 12206907
 Conc: 21.70 ng/ml



#28 Decachlorobiphenyl
 R.T.: 11.492 min
 Delta R.T.: 0.000 min
 Response: 18651395
 Conc: 20.91 ng/ml