

Data Path : Z:\pestpcbsrv\HPCHEM1\ECD_L\Data\PL072921\
 Data File : PL068550.D
 Signal(s) : Signal #1: ECD1A.ch Signal #2: ECD2B.ch
 Acq On : 29 Jul 2021 14:03
 Operator : AR\AJ
 Sample : M33206-04
 Misc :
 ALS Vial : 14 Sample Multiplier: 1

Instrument :
 ECD_L
 ClientSampleId :

Integration File signal 1: autoint1.e
 Integration File signal 2: autoint2.e
 Quant Time: Jul 30 01:19:23 2021
 Quant Method : Z:\pestpcbsrv\HPCHEM1\ECD_L\methods\PL071921.M
 Quant Title : GC Extractables
 QLast Update : Tue Jul 20 11:44:21 2021
 Response via : Initial Calibration
 Integrator: ChemStation

Volume Inj. : 1 µl
 Signal #1 Phase : ZB-MR2 Signal #2 Phase: ZB-MR1
 Signal #1 Info : 30M x 0.32mm x0.2 Signal #2 Info : 30M x 0.32mm x0.5µm

	Compound	RT#1	RT#2	Resp#1	Resp#2	ng/ml	ng/ml

System Monitoring Compounds							
1)	SA Tetrachlo...	4.642	5.570	8630290	18715951	20.109	18.341
28)	SA Decachlor...	10.416	11.493	8583301	13574545	15.261	15.218
Target Compounds							
7)	B delta-BHC	0.000	7.093f	0	68658	N.D.	0.056 #
8)	B Heptachlo...	0.000	8.031	0	146146	N.D.	0.129 #
10)	B gamma-Chl...	0.000	8.323f	0	651213	N.D.	0.578 #
12)	B 4,4'-DDE	0.000	8.569	0	147940	N.D.	0.144 #
13)	MA Dieldrin	0.000	8.722	0	178648	N.D.	0.168 #
14)	MA Endrin	0.000	8.968	0	90197	N.D.	0.101 #
15)	B Endosulfa...	0.000	9.216	0	380051	N.D.	0.419 #
16)	A 4,4'-DDD	0.000	9.108	0	34298	N.D.	0.040 #
18)	B Endrin al...	0.000	9.341	0	85475	N.D.	0.119 #
22)	Mirex	0.000	10.509f	0	61563	N.D.	0.080 #
23)	Chlordane-1	0.000	6.983f	0	55453	N.D.	1.369 #
25)	Chlordane-3	0.000	8.323f	0	651213	N.D.	4.205 #

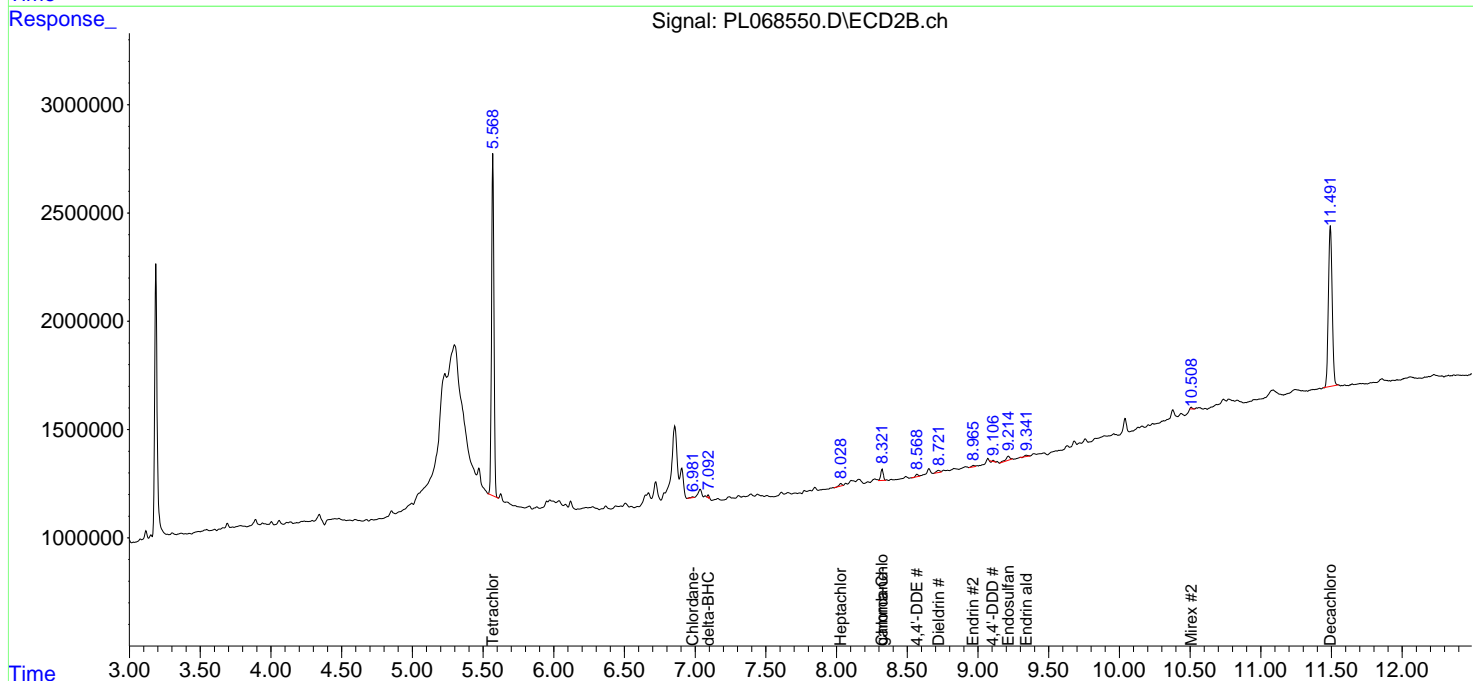
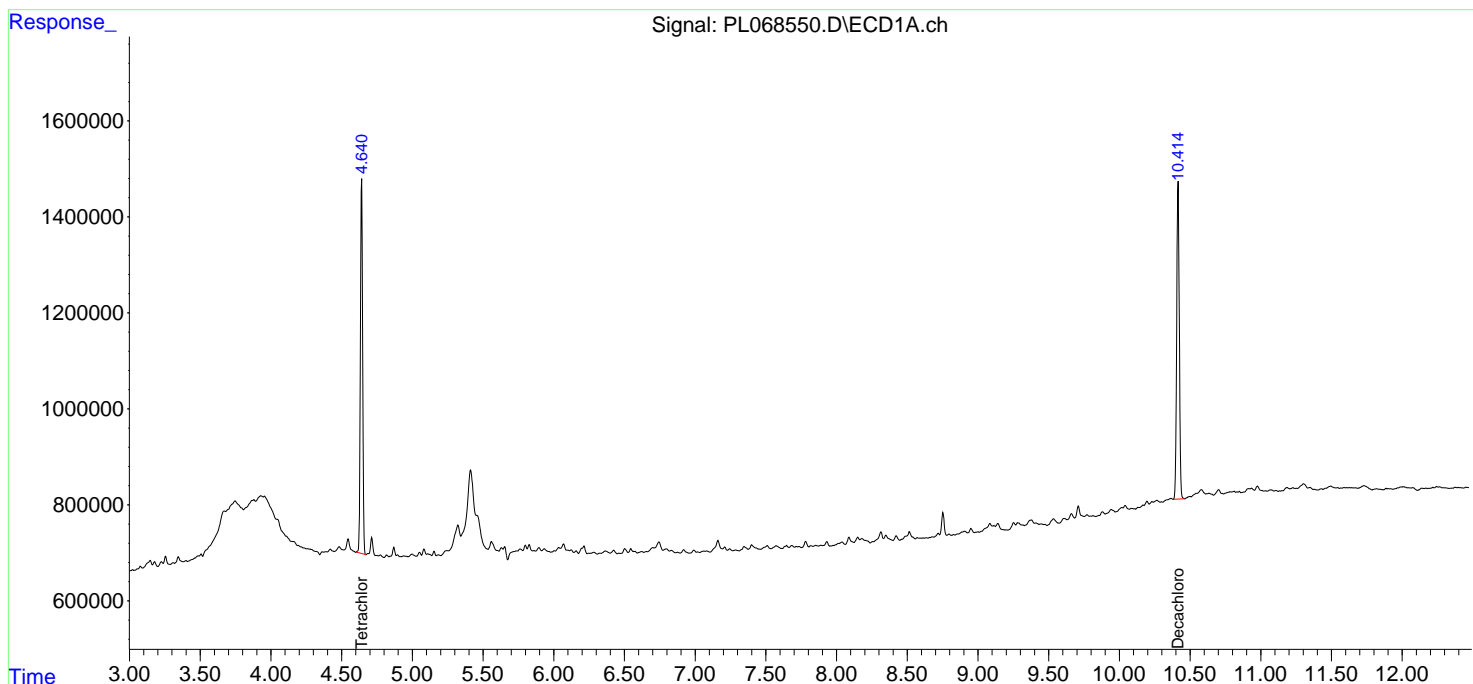
(f)=RT Delta > 1/2 Window (#)=Amounts differ by > 25% (m)=manual int.

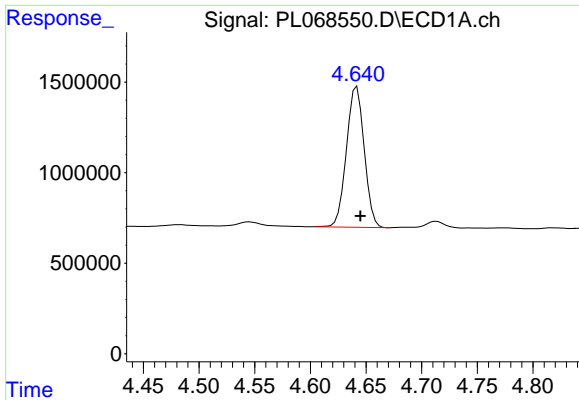
Data Path : Z:\pestpcbsrv\HPCHEM1\ECD_L\Data\PL072921\
 Data File : PL068550.D
 Signal(s) : Signal #1: ECD1A.ch Signal #2: ECD2B.ch
 Acq On : 29 Jul 2021 14:03
 Operator : AR\AJ
 Sample : M33206-04
 Misc :
 ALS Vial : 14 Sample Multiplier: 1

Instrument :
 ECD_L
 ClientSampled :

Integration File signal 1: autoint1.e
 Integration File signal 2: autoint2.e
 Quant Time: Jul 30 01:19:23 2021
 Quant Method : Z:\pestpcbsrv\HPCHEM1\ECD_L\methods\PL071921.M
 Quant Title : GC Extractables
 QLast Update : Tue Jul 20 11:44:21 2021
 Response via : Initial Calibration
 Integrator: ChemStation

Volume Inj. : 1 µl
 Signal #1 Phase : ZB-MR2 Signal #2 Phase: ZB-MR1
 Signal #1 Info : 30M x 0.32mm x0.2 Signal #2 Info : 30M x 0.32mm x0.5µm

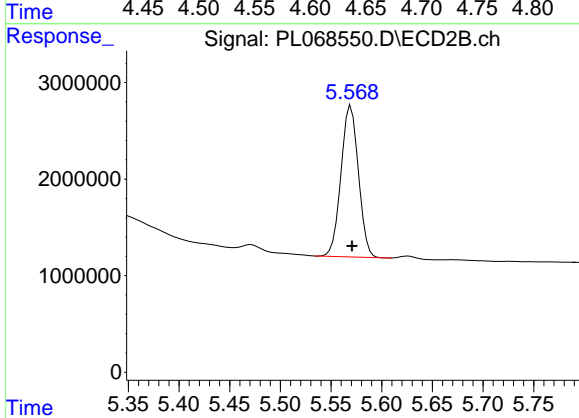




#1 Tetrachloro-m-xylene

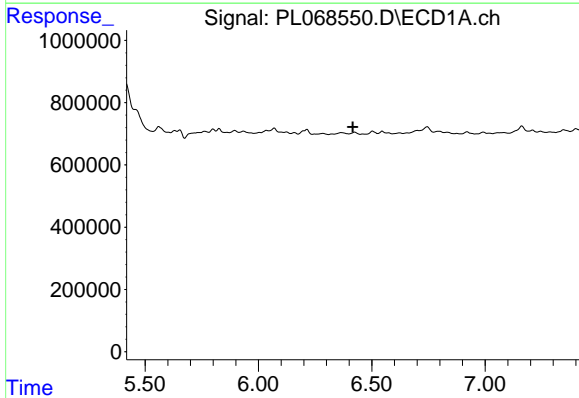
R.T.: 4.642 min
 Delta R.T.: -0.003 min
 Response: 8630290
 Conc: 20.11 ng/ml

Instrument :
 ECD_L
 ClientSampleId :



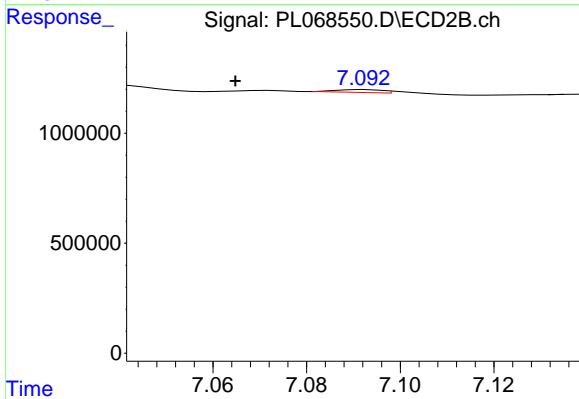
#1 Tetrachloro-m-xylene

R.T.: 5.570 min
 Delta R.T.: -0.001 min
 Response: 18715951
 Conc: 18.34 ng/ml



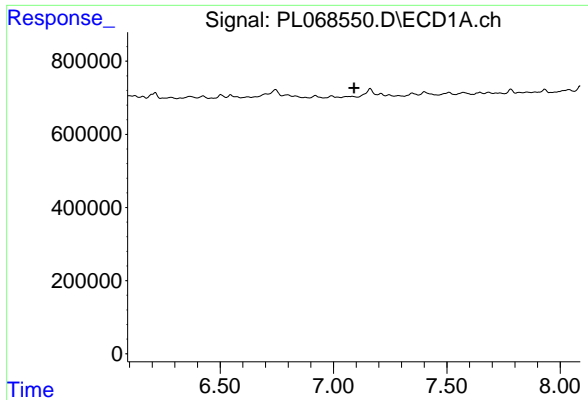
#7 delta-BHC

R.T.: 0.000 min
 Exp R.T. : 6.417 min
 Response: 0
 Conc: N.D.



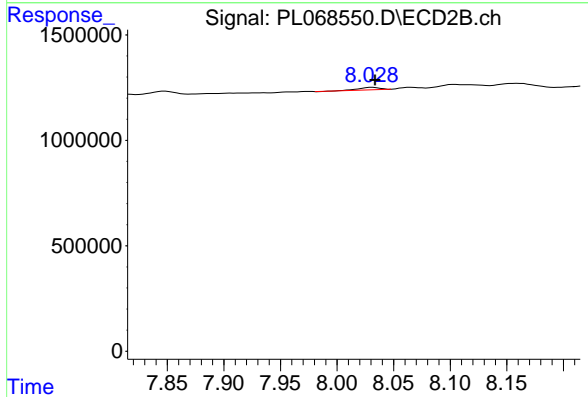
#7 delta-BHC

R.T.: 7.093 min
 Delta R.T.: 0.028 min
 Response: 68658
 Conc: 0.06 ng/ml

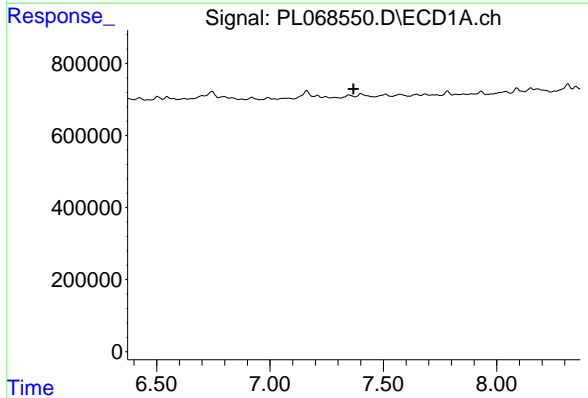


#8 Heptachlor epoxide
 R.T.: 0.000 min
 Exp R.T. : 7.091 min
 Response: 0
 Conc: N.D.

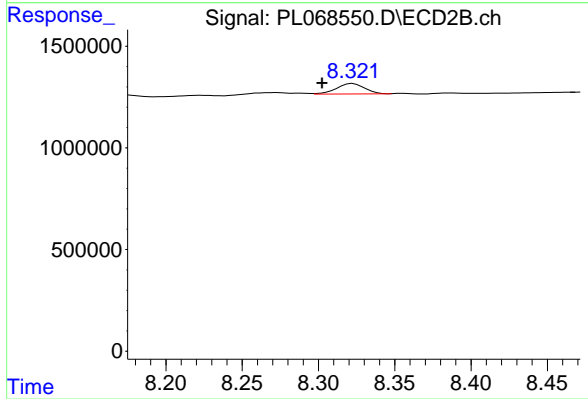
Instrument :
 ECD_L
 ClientSampleId :



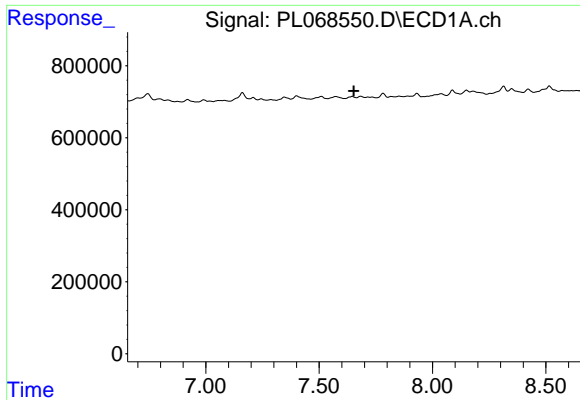
#8 Heptachlor epoxide
 R.T.: 8.031 min
 Delta R.T.: -0.003 min
 Response: 146146
 Conc: 0.13 ng/ml



#10 gamma-Chlordane
 R.T.: 0.000 min
 Exp R.T. : 7.369 min
 Response: 0
 Conc: N.D.

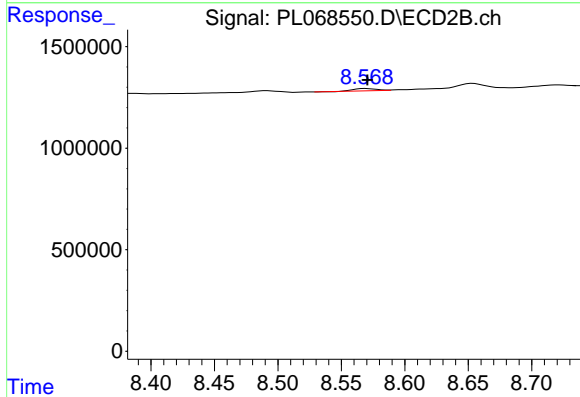


#10 gamma-Chlordane
 R.T.: 8.323 min
 Delta R.T.: 0.020 min
 Response: 651213
 Conc: 0.58 ng/ml

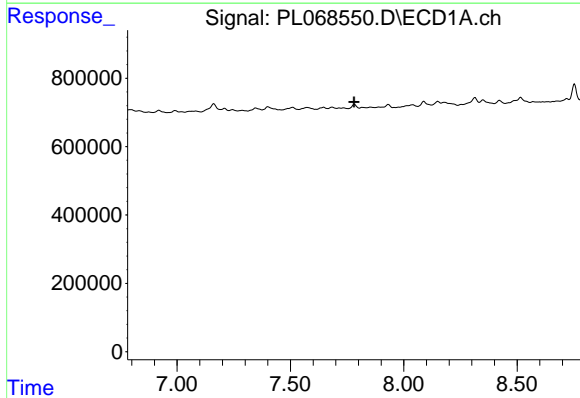


#12 4,4'-DDE
 R.T.: 0.000 min
 Exp R.T.: 7.653 min
 Response: 0
 Conc: N.D.

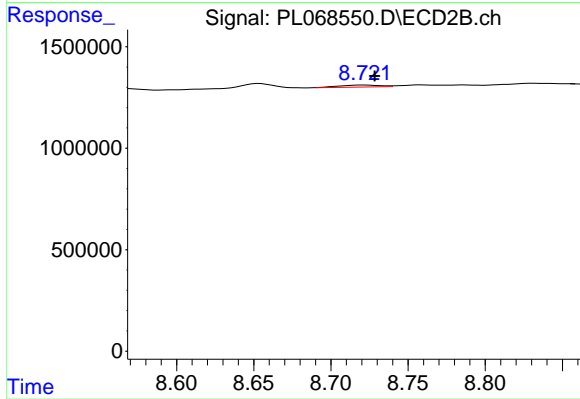
Instrument :
 ECD_L
 ClientSampleId :



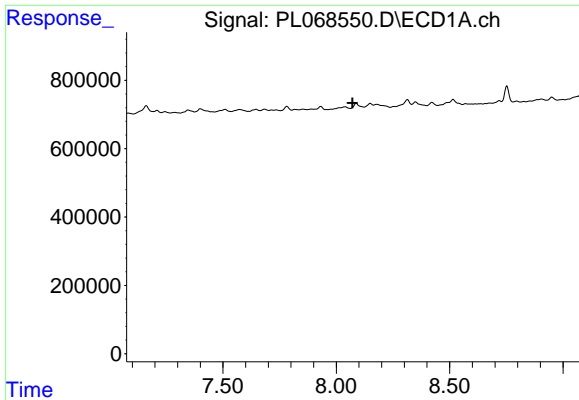
#12 4,4'-DDE
 R.T.: 8.569 min
 Delta R.T.: -0.001 min
 Response: 147940
 Conc: 0.14 ng/ml



#13 Dieldrin
 R.T.: 0.000 min
 Exp R.T.: 7.781 min
 Response: 0
 Conc: N.D.



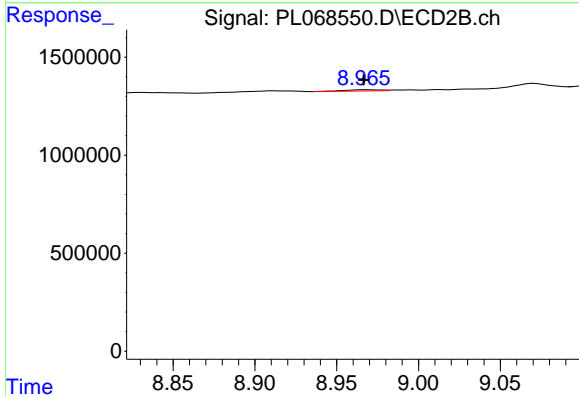
#13 Dieldrin
 R.T.: 8.722 min
 Delta R.T.: -0.007 min
 Response: 178648
 Conc: 0.17 ng/ml



#14 Endrin

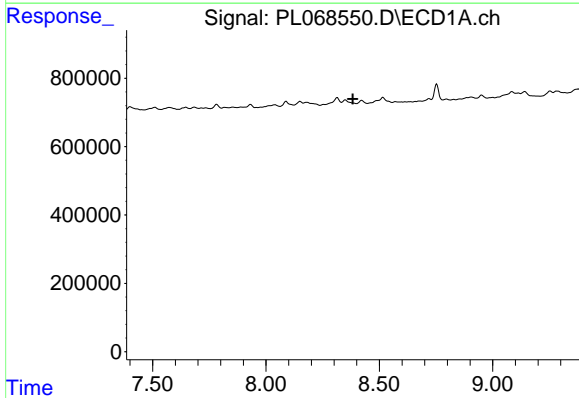
R.T.: 0.000 min
 Exp R.T. : 8.072 min
 Response: 0
 Conc: N.D.

Instrument :
 ECD_L
 ClientSampled :



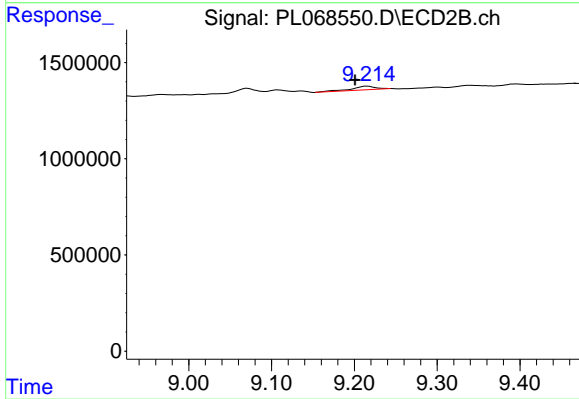
#14 Endrin

R.T.: 8.968 min
 Delta R.T.: 0.002 min
 Response: 90197
 Conc: 0.10 ng/ml



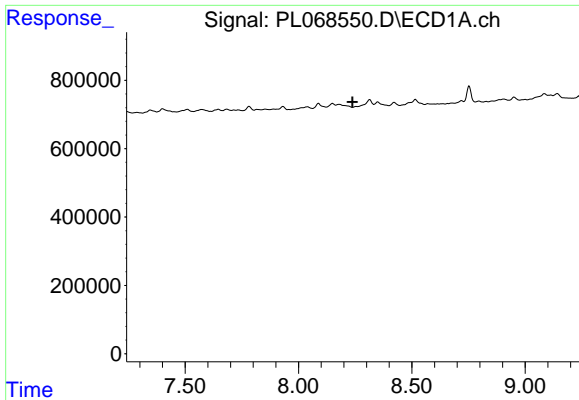
#15 Endosulfan II

R.T.: 0.000 min
 Exp R.T. : 8.382 min
 Response: 0
 Conc: N.D.



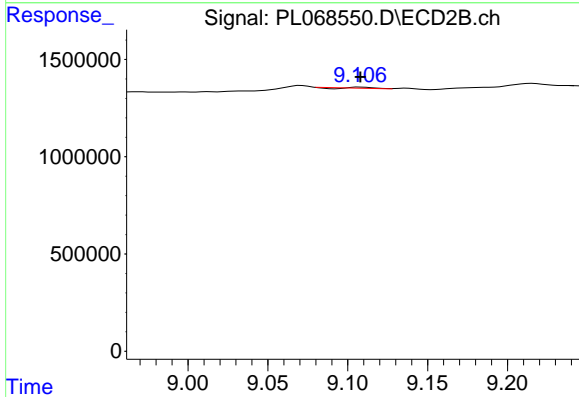
#15 Endosulfan II

R.T.: 9.216 min
 Delta R.T.: 0.015 min
 Response: 380051
 Conc: 0.42 ng/ml

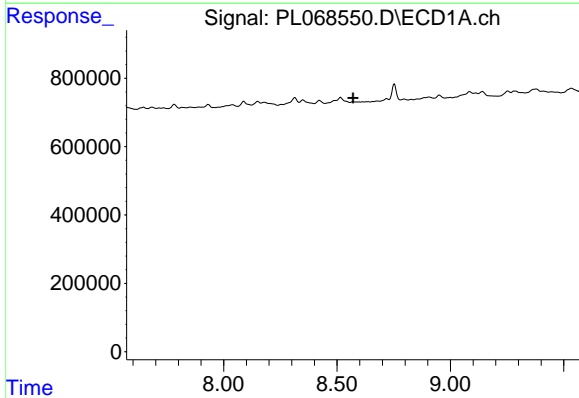


#16 4,4'-DDD
 R.T.: 0.000 min
 Exp R.T.: 8.238 min
 Response: 0
 Conc: N.D.

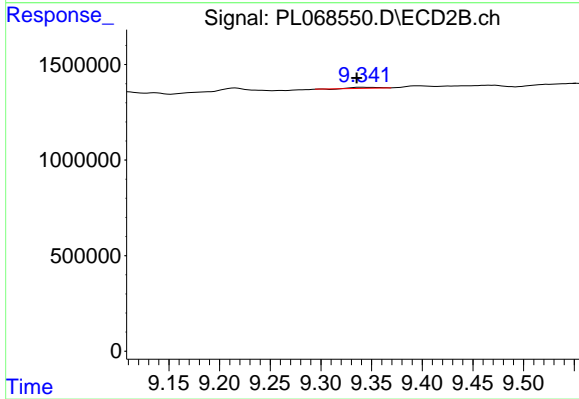
Instrument :
 ECD_L
 ClientSampled :



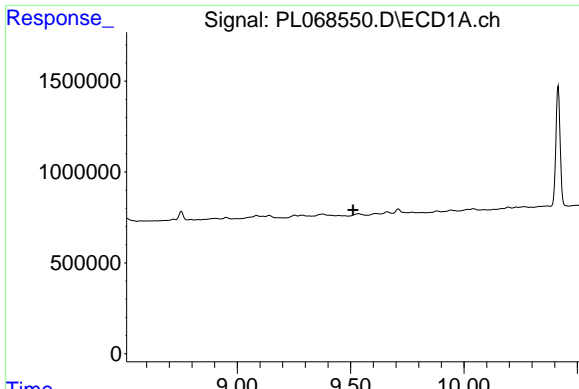
#16 4,4'-DDD
 R.T.: 9.108 min
 Delta R.T.: 0.000 min
 Response: 34298
 Conc: 0.04 ng/ml



#18 Endrin aldehyde
 R.T.: 0.000 min
 Exp R.T.: 8.571 min
 Response: 0
 Conc: N.D.

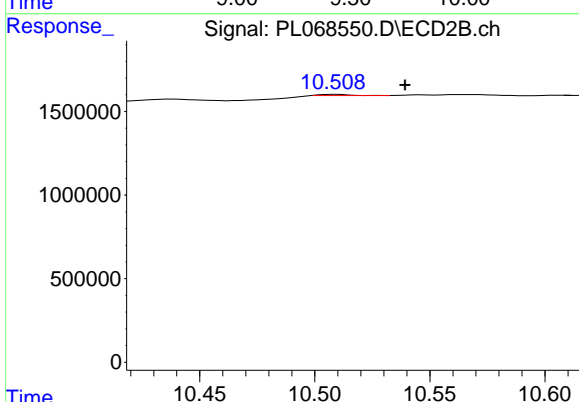


#18 Endrin aldehyde
 R.T.: 9.341 min
 Delta R.T.: 0.006 min
 Response: 85475
 Conc: 0.12 ng/ml

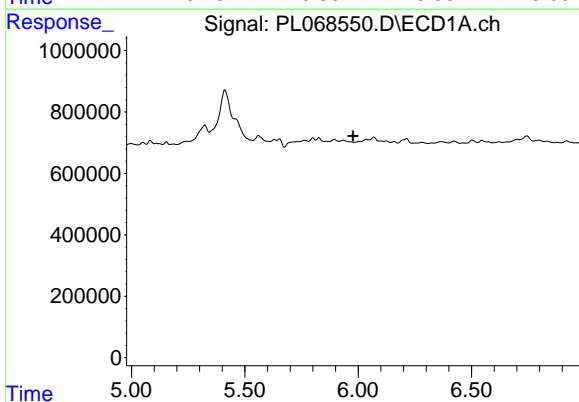


#22 Mirex
 R.T.: 0.000 min
 Exp R.T.: 9.511 min
 Response: 0
 Conc: N.D.

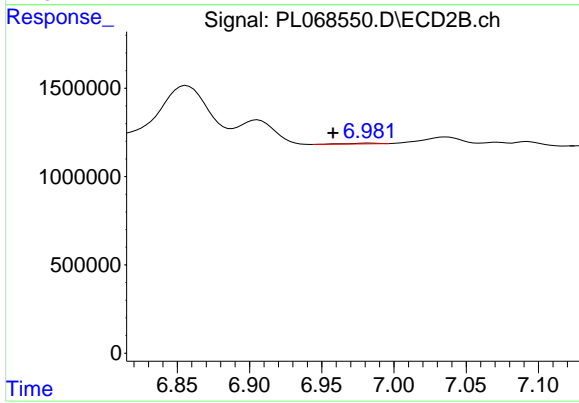
Instrument :
 ECD_L
 ClientSampled :



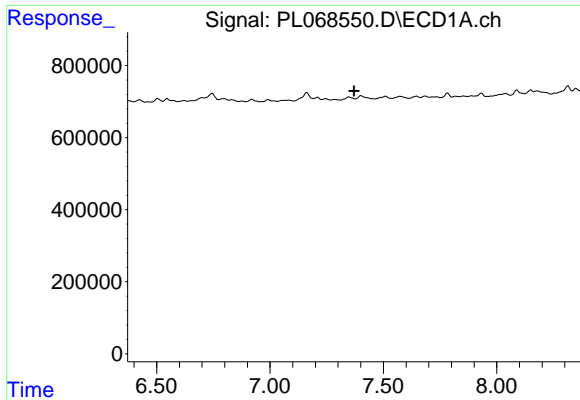
#22 Mirex
 R.T.: 10.509 min
 Delta R.T.: -0.030 min
 Response: 61563
 Conc: 0.08 ng/ml



#23 Chlordane-1
 R.T.: 0.000 min
 Exp R.T.: 5.978 min
 Response: 0
 Conc: N.D.

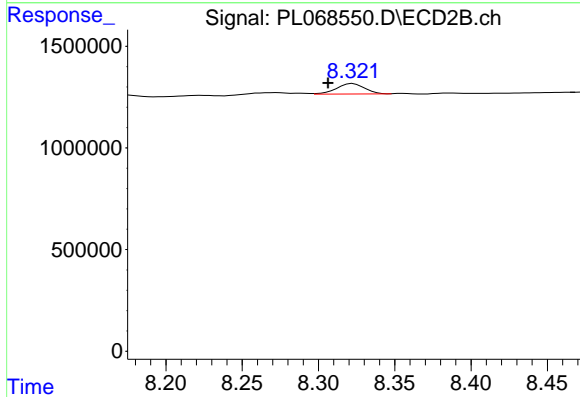


#23 Chlordane-1
 R.T.: 6.983 min
 Delta R.T.: 0.025 min
 Response: 55453
 Conc: 1.37 ng/ml

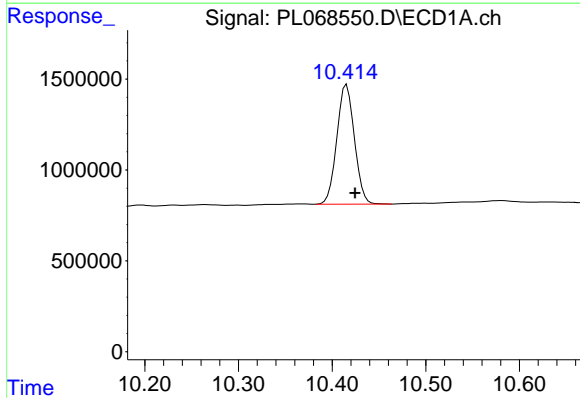


#25 Chlordane-3
 R.T.: 0.000 min
 Exp R.T.: 7.371 min
 Response: 0
 Conc: N.D.

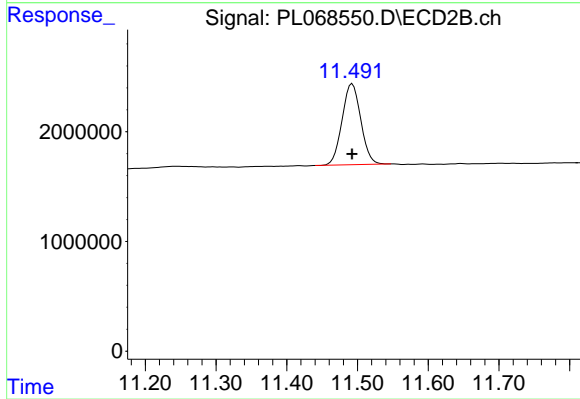
Instrument :
 ECD_L
 ClientSampled :



#25 Chlordane-3
 R.T.: 8.323 min
 Delta R.T.: 0.016 min
 Response: 651213
 Conc: 4.20 ng/ml



#28 Decachlorobiphenyl
 R.T.: 10.416 min
 Delta R.T.: -0.009 min
 Response: 8583301
 Conc: 15.26 ng/ml



#28 Decachlorobiphenyl
 R.T.: 11.493 min
 Delta R.T.: 0.000 min
 Response: 13574545
 Conc: 15.22 ng/ml