

Data Path : Z:\pestpcbsrv\HPCHEM1\ECD\_L\Data\PL072921\  
 Data File : PL0CCC-5.D  
 Signal(s) : Signal #1: ECD1A.ch Signal #2: ECD2B.ch  
 Acq On : 30 Jul 2021 01:24  
 Operator : AR\AJ  
 Sample : PSTDCCC050  
 Misc :  
 ALS Vial : 4 Sample Multiplier: 1

Instrument :  
 ECD\_L  
 ClientSampleId :

Integration File signal 1: autoint1.e  
 Integration File signal 2: autoint2.e  
 Quant Time: Jul 30 01:36:18 2021  
 Quant Method : Z:\pestpcbsrv\HPCHEM1\ECD\_L\methods\PL071921.M  
 Quant Title : GC Extractables  
 QLast Update : Tue Jul 20 11:44:21 2021  
 Response via : Initial Calibration  
 Integrator: ChemStation

Volume Inj. : 1 µl  
 Signal #1 Phase : ZB-MR2 Signal #2 Phase: ZB-MR1  
 Signal #1 Info : 30M x 0.32mm x0.2 Signal #2 Info : 30M x 0.32mm x0.5µm

Compound	RT#1	RT#2	Resp#1	Resp#2	ng/ml	ng/ml
-----						
System Monitoring Compounds						
1) SA Tetrachlo...	4.641	5.570	25195506	57435935	58.706	56.286
28) SA Decachlor...	10.416	11.493	27438534	47395815	48.787	53.135
Target Compounds						
2) A alpha-BHC	5.349	6.150	34525428	78089117	58.978	57.434
3) MA gamma-BHC...	5.771	6.546	33234692	71711668	58.466	55.582
4) MA Heptachlor	6.183	7.196	32465629	66632598	53.264	51.125
5) MB Aldrin	6.509	7.567	32669697	66052074	58.136	55.671
6) B beta-BHC	6.151	6.798	16959501	34391612	57.957	48.681
7) B delta-BHC	6.412	7.067	32990947	67342043	59.047	54.964
8) B Heptachlo...	7.085	8.033	31143101	60995441	56.058	53.949
9) A Endosulfan I	7.489	8.438	29046981	54367761	54.985	52.805
10) B gamma-Chl...	7.362	8.302	31661056	59734563	55.181	53.040
11) B alpha-Chl...	7.433	8.383	31368864	58666382	54.617	52.161
12) B 4,4'-DDE	7.646	8.570	28259311	55236301	56.079	53.597
13) MA Dieldrin	7.775	8.728	29874695	57129598	55.500	53.863
14) MA Endrin	8.066	8.967	25986228	44024232	51.963	49.235
15) B Endosulfa...	8.376	9.201	26103150	46366535	52.872	51.155
16) A 4,4'-DDD	8.232	9.110	27409739	49948197	61.363	58.661
17) MA 4,4'-DDT	8.494	9.427	20324556	36562395	40.520	38.738
18) B Endrin al...	8.564	9.335	20659937	36670481	52.154	50.880
19) B Endosulfa...	8.795	9.573	27193624	45981021	51.751	51.063
20) A Methoxychlor	9.089	9.912	12451591	19374534	39.806	38.136
21) B Endrin ke...	9.315	10.071	31393343	51902111	53.019	52.041
22) Mirex	9.504	10.539	25188276	37921134	51.007	49.017
24) Chlordane-2	6.656	7.567f	253454	66052074	11.818	1587.599 #
25) Chlordane-3	7.362	8.302	31661056	59734563	587.907	385.708 #
26) Chlordane-4	7.433	8.383	31368864	58666382	555.597	312.919 #
27) Chlordane-5	8.376	0.000	26103150	0	1296.970	N.D. #

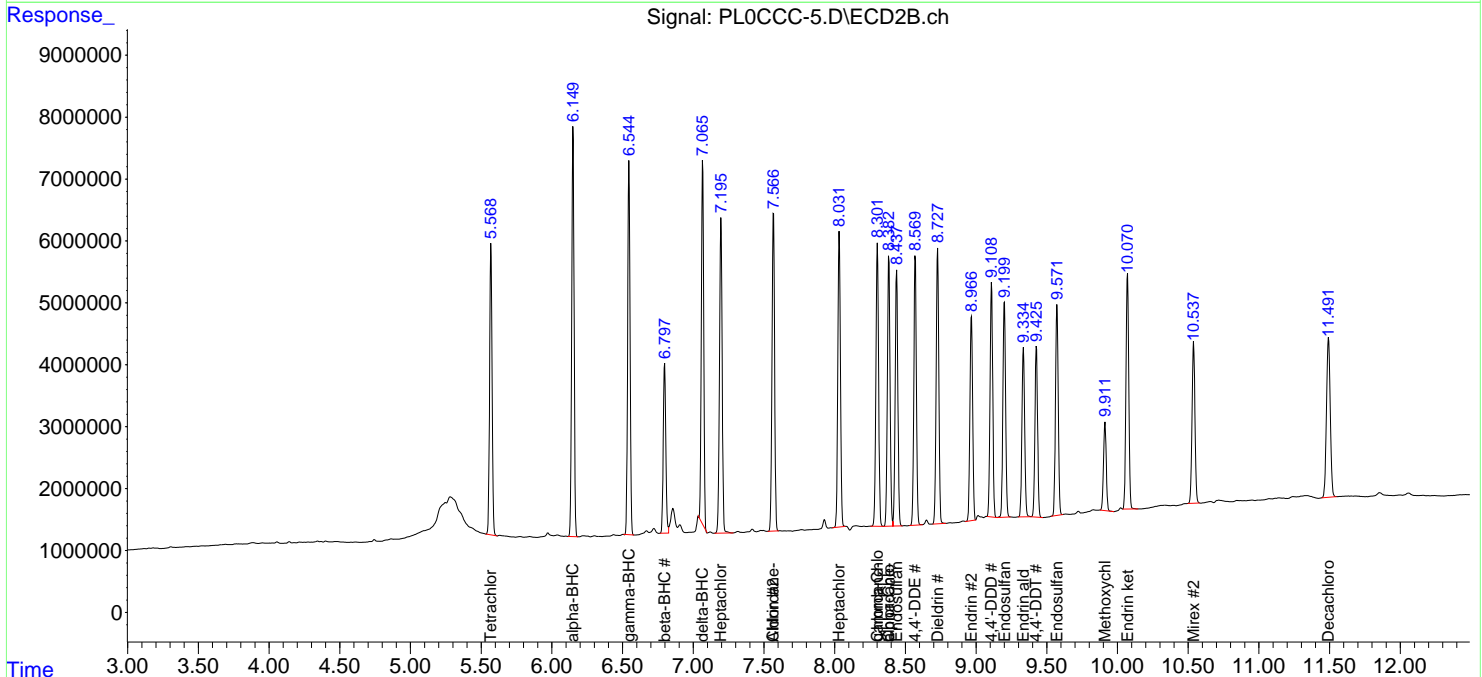
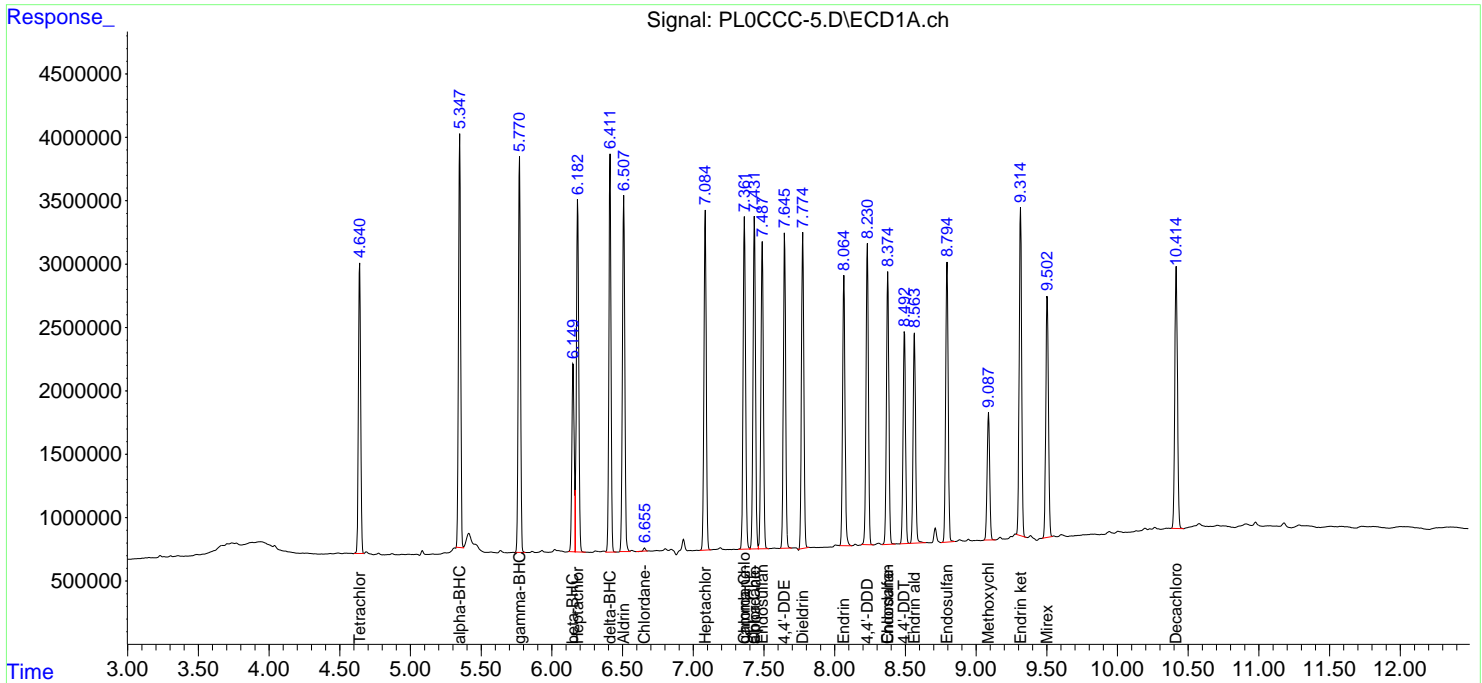
(f)=RT Delta > 1/2 Window (#)=Amounts differ by > 25% (m)=manual int.

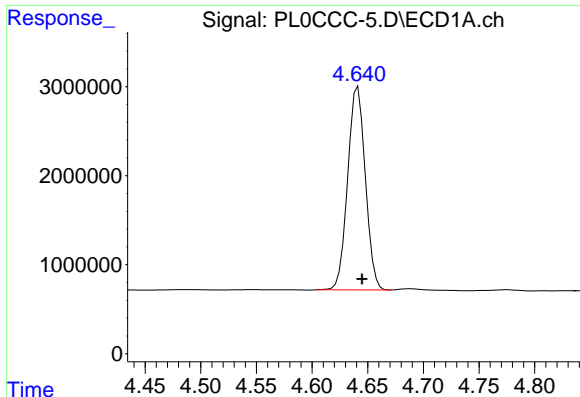
Data Path : Z:\pestpcbsrv\HPCHEM1\ECD\_L\Data\PL072921\  
 Data File : PL0CCC-5.D  
 Signal(s) : Signal #1: ECD1A.ch Signal #2: ECD2B.ch  
 Acq On : 30 Jul 2021 01:24  
 Operator : AR\AJ  
 Sample : PSTDCCC050  
 Misc :  
 ALS Vial : 4 Sample Multiplier: 1

Instrument :  
 ECD\_L  
 ClientSampled :

Integration File signal 1: autoint1.e  
 Integration File signal 2: autoint2.e  
 Quant Time: Jul 30 01:36:18 2021  
 Quant Method : Z:\pestpcbsrv\HPCHEM1\ECD\_L\methods\PL071921.M  
 Quant Title : GC Extractables  
 QLast Update : Tue Jul 20 11:44:21 2021  
 Response via : Initial Calibration  
 Integrator: ChemStation

Volume Inj. : 1 µl  
 Signal #1 Phase : ZB-MR2 Signal #2 Phase: ZB-MR1  
 Signal #1 Info : 30M x 0.32mm x0.2 Signal #2 Info : 30M x 0.32mm x0.5µm

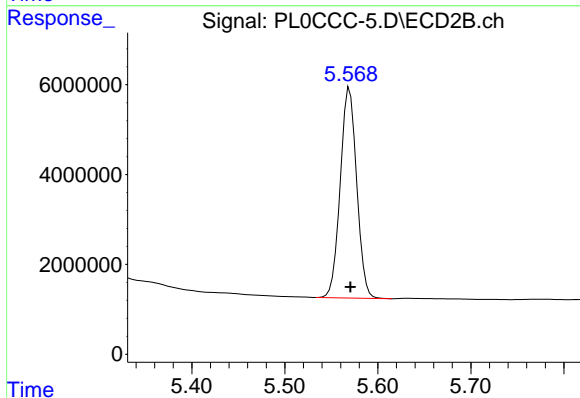




#1 Tetrachloro-m-xylene

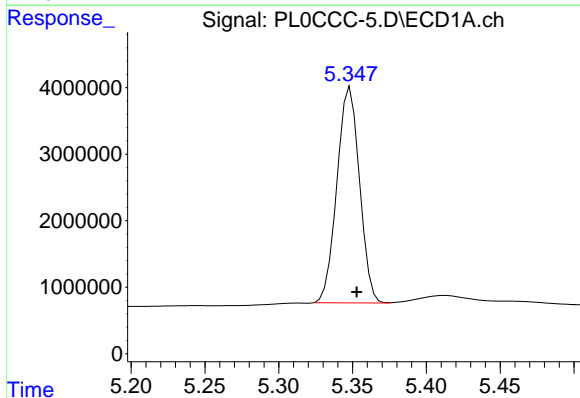
R.T.: 4.641 min  
 Delta R.T.: -0.004 min  
 Response: 25195506  
 Conc: 58.71 ng/ml

Instrument :  
 ECD\_L  
 ClientSampleId :



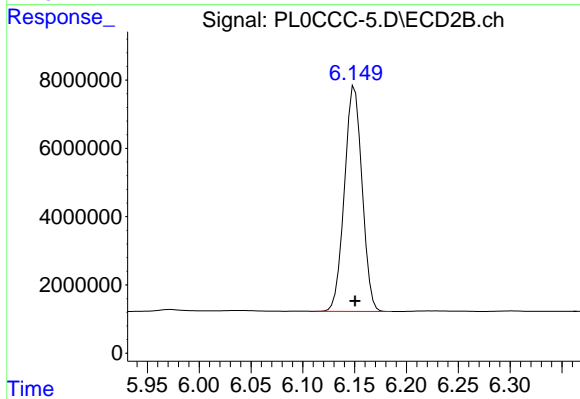
#1 Tetrachloro-m-xylene

R.T.: 5.570 min  
 Delta R.T.: -0.001 min  
 Response: 57435935  
 Conc: 56.29 ng/ml



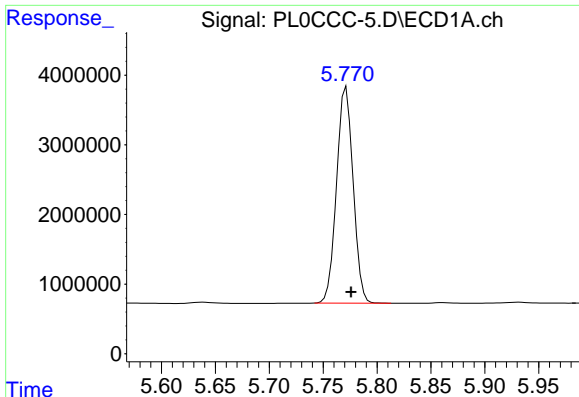
#2 alpha-BHC

R.T.: 5.349 min  
 Delta R.T.: -0.004 min  
 Response: 34525428  
 Conc: 58.98 ng/ml



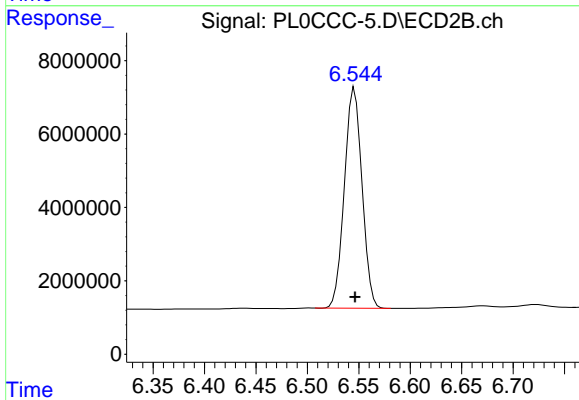
#2 alpha-BHC

R.T.: 6.150 min  
 Delta R.T.: 0.000 min  
 Response: 78089117  
 Conc: 57.43 ng/ml

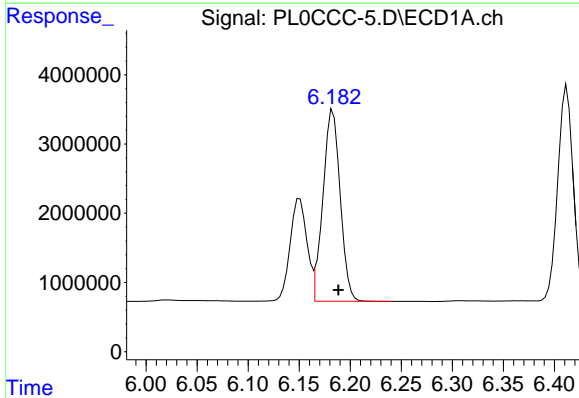


#3 gamma-BHC (Lindane)  
 R.T.: 5.771 min  
 Delta R.T.: -0.004 min  
 Response: 33234692  
 Conc: 58.47 ng/ml

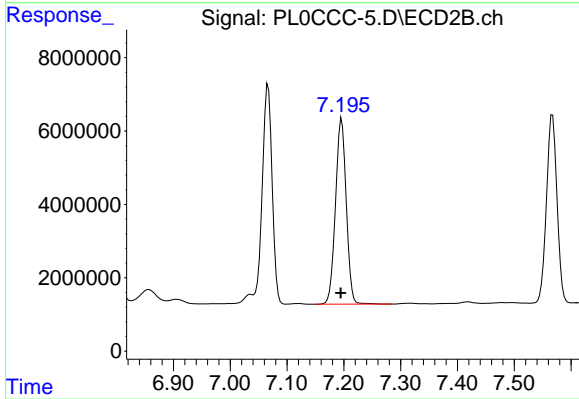
Instrument :  
 ECD\_L  
 ClientSampleId :



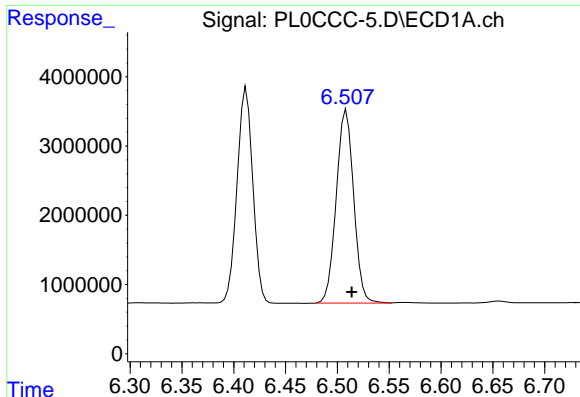
#3 gamma-BHC (Lindane)  
 R.T.: 6.546 min  
 Delta R.T.: 0.000 min  
 Response: 71711668  
 Conc: 55.58 ng/ml



#4 Heptachlor  
 R.T.: 6.183 min  
 Delta R.T.: -0.005 min  
 Response: 32465629  
 Conc: 53.26 ng/ml

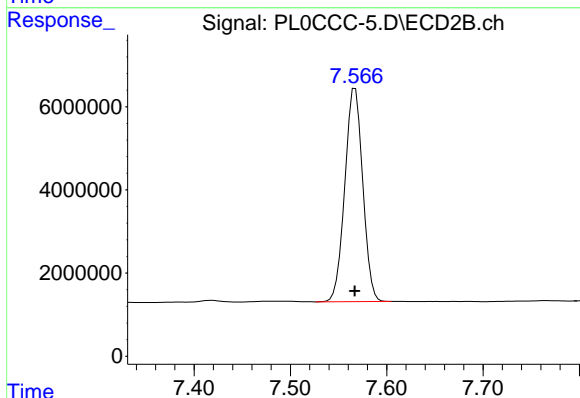


#4 Heptachlor  
 R.T.: 7.196 min  
 Delta R.T.: 0.001 min  
 Response: 66632598  
 Conc: 51.13 ng/ml

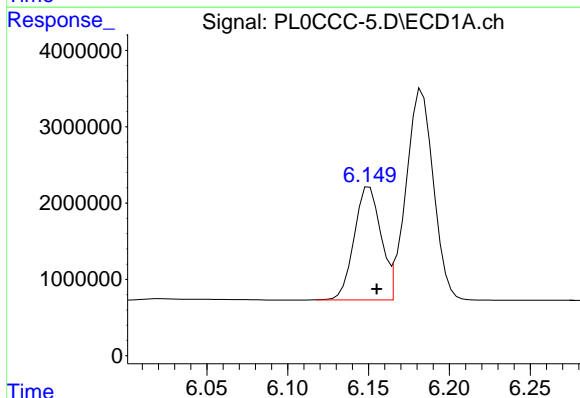


#5 Aldrin  
 R.T.: 6.509 min  
 Delta R.T.: -0.005 min  
 Response: 32669697  
 Conc: 58.14 ng/ml

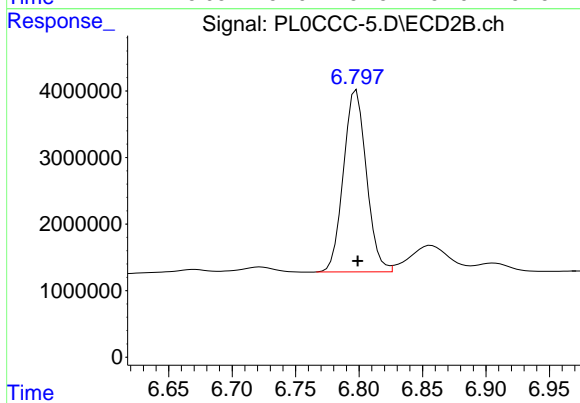
Instrument :  
 ECD\_L  
 ClientSampled :



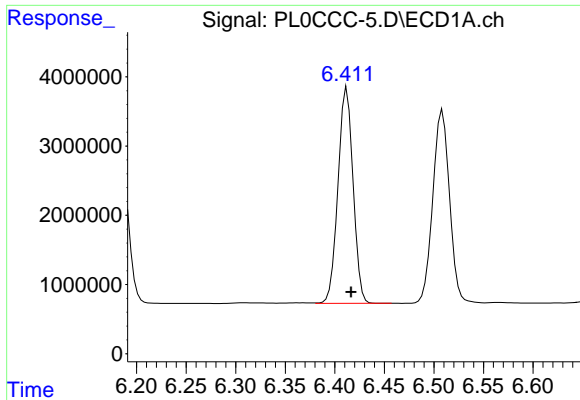
#5 Aldrin  
 R.T.: 7.567 min  
 Delta R.T.: 0.000 min  
 Response: 66052074  
 Conc: 55.67 ng/ml



#6 beta-BHC  
 R.T.: 6.151 min  
 Delta R.T.: -0.004 min  
 Response: 16959501  
 Conc: 57.96 ng/ml

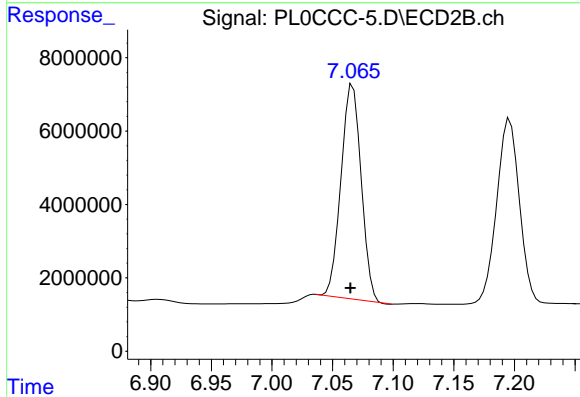


#6 beta-BHC  
 R.T.: 6.798 min  
 Delta R.T.: -0.001 min  
 Response: 34391612  
 Conc: 48.68 ng/ml

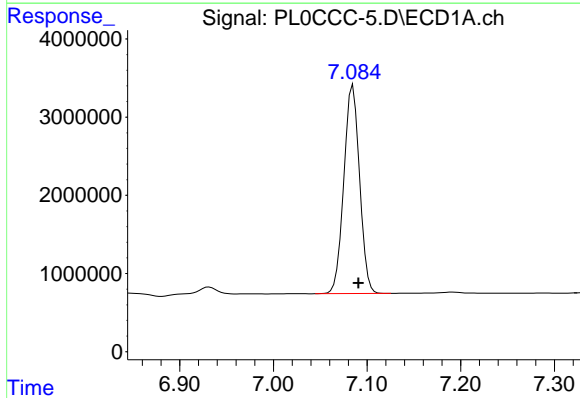


#7 delta-BHC  
 R.T.: 6.412 min  
 Delta R.T.: -0.004 min  
 Response: 32990947  
 Conc: 59.05 ng/ml

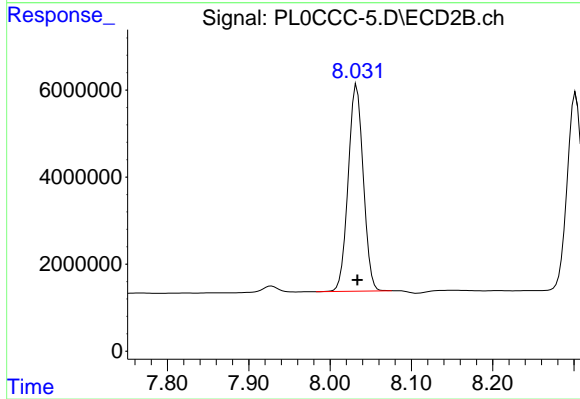
Instrument :  
 ECD\_L  
 ClientSampled :



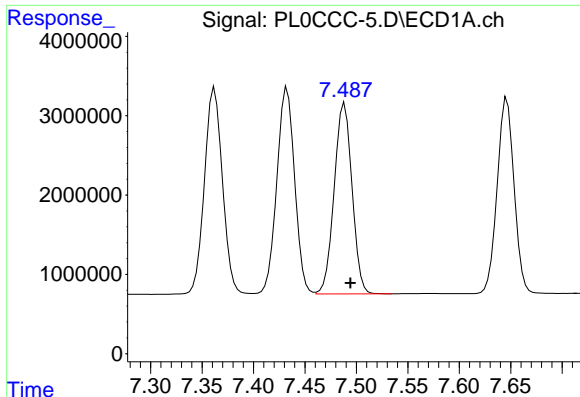
#7 delta-BHC  
 R.T.: 7.067 min  
 Delta R.T.: 0.002 min  
 Response: 67342043  
 Conc: 54.96 ng/ml



#8 Heptachlor epoxide  
 R.T.: 7.085 min  
 Delta R.T.: -0.006 min  
 Response: 31143101  
 Conc: 56.06 ng/ml



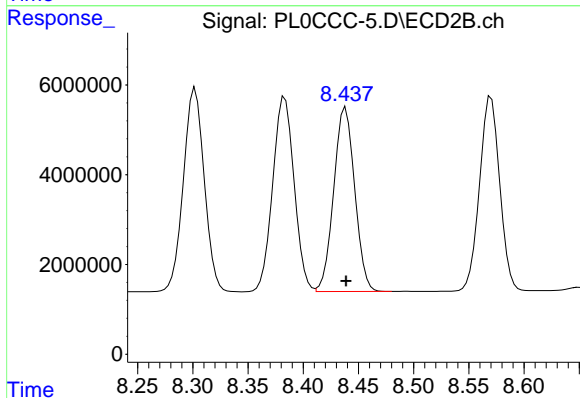
#8 Heptachlor epoxide  
 R.T.: 8.033 min  
 Delta R.T.: 0.000 min  
 Response: 60995441  
 Conc: 53.95 ng/ml



#9 Endosulfan I

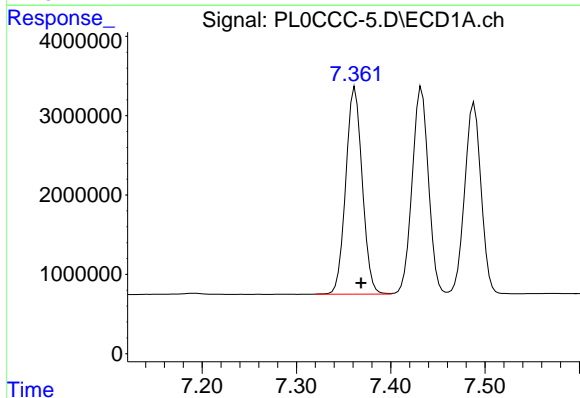
R.T.: 7.489 min  
 Delta R.T.: -0.006 min  
 Response: 29046981  
 Conc: 54.98 ng/ml

Instrument :  
 ECD\_L  
 ClientSampled :



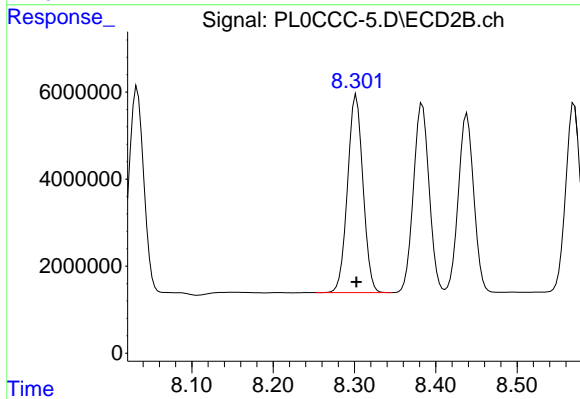
#9 Endosulfan I

R.T.: 8.438 min  
 Delta R.T.: 0.000 min  
 Response: 54367761  
 Conc: 52.81 ng/ml



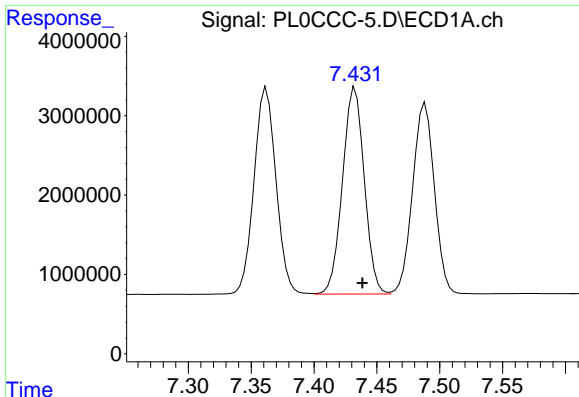
#10 gamma-Chlordane

R.T.: 7.362 min  
 Delta R.T.: -0.006 min  
 Response: 31661056  
 Conc: 55.18 ng/ml



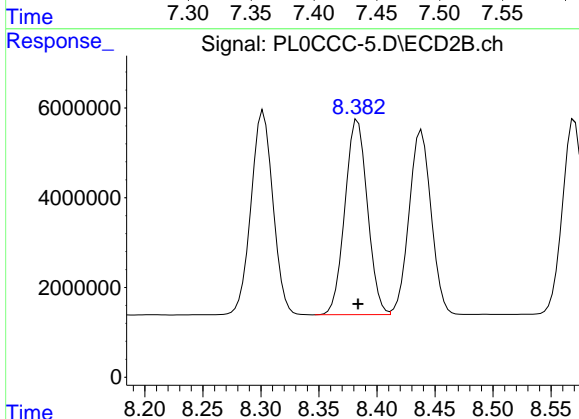
#10 gamma-Chlordane

R.T.: 8.302 min  
 Delta R.T.: 0.000 min  
 Response: 59734563  
 Conc: 53.04 ng/ml

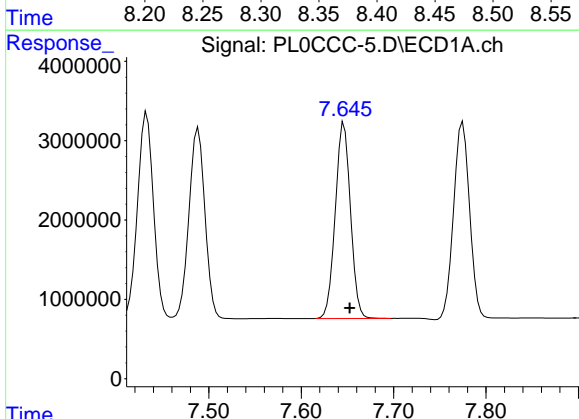


#11 alpha-Chlordane  
 R.T.: 7.433 min  
 Delta R.T.: -0.006 min  
 Response: 31368864  
 Conc: 54.62 ng/ml

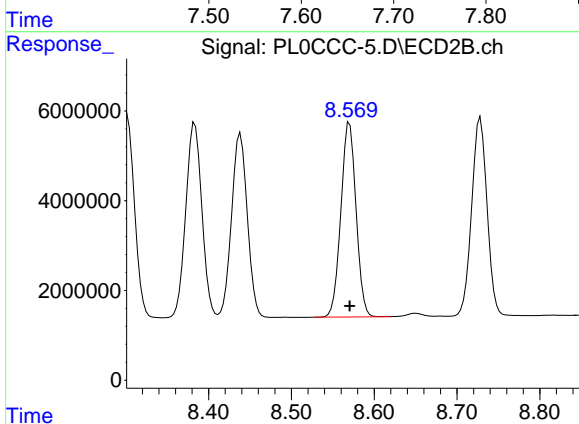
Instrument :  
 ECD\_L  
 ClientSampleId :



#11 alpha-Chlordane  
 R.T.: 8.383 min  
 Delta R.T.: 0.000 min  
 Response: 58666382  
 Conc: 52.16 ng/ml

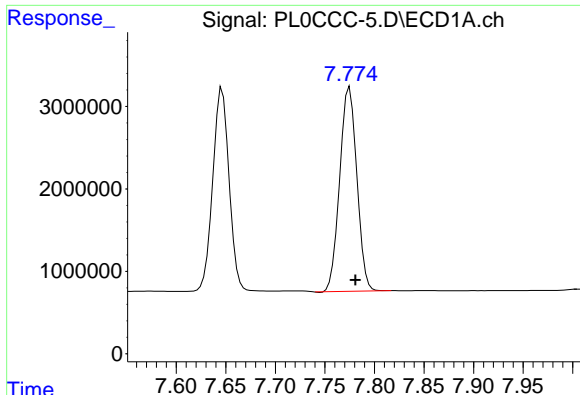


#12 4,4'-DDE  
 R.T.: 7.646 min  
 Delta R.T.: -0.006 min  
 Response: 28259311  
 Conc: 56.08 ng/ml



#12 4,4'-DDE  
 R.T.: 8.570 min  
 Delta R.T.: 0.000 min  
 Response: 55236301  
 Conc: 53.60 ng/ml

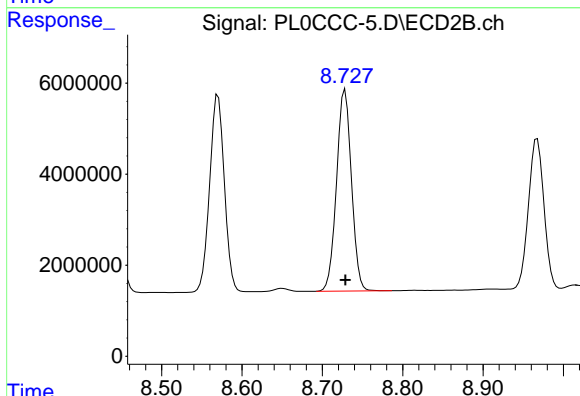




#13 Dieldrin

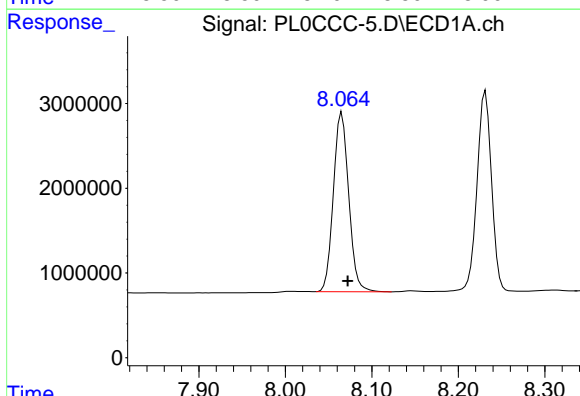
R.T.: 7.775 min  
 Delta R.T.: -0.006 min  
 Response: 29874695  
 Conc: 55.50 ng/ml

Instrument :  
 ECD\_L  
 ClientSampled :



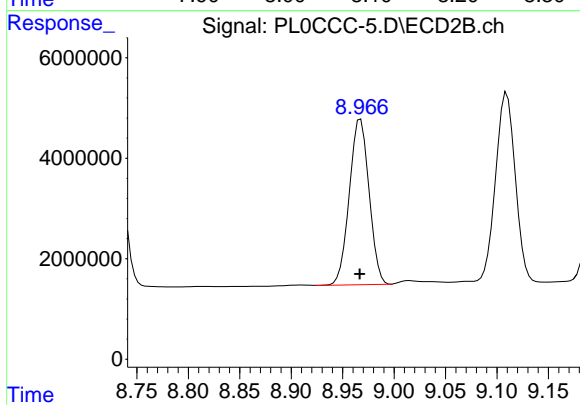
#13 Dieldrin

R.T.: 8.728 min  
 Delta R.T.: 0.000 min  
 Response: 57129598  
 Conc: 53.86 ng/ml



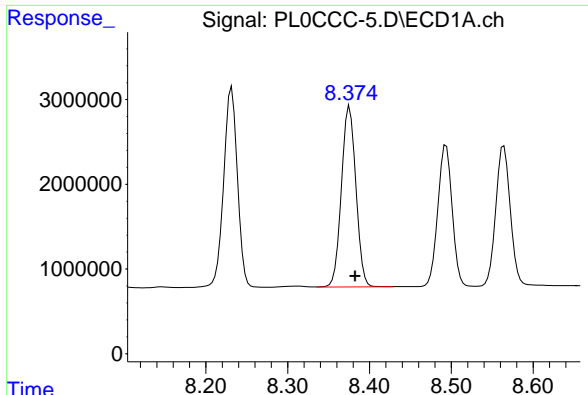
#14 Endrin

R.T.: 8.066 min  
 Delta R.T.: -0.007 min  
 Response: 25986228  
 Conc: 51.96 ng/ml



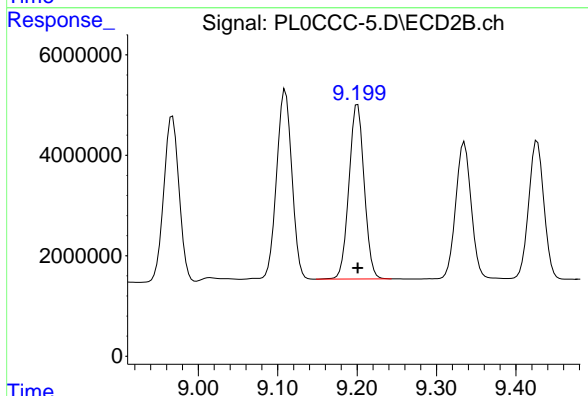
#14 Endrin

R.T.: 8.967 min  
 Delta R.T.: 0.000 min  
 Response: 44024232  
 Conc: 49.23 ng/ml

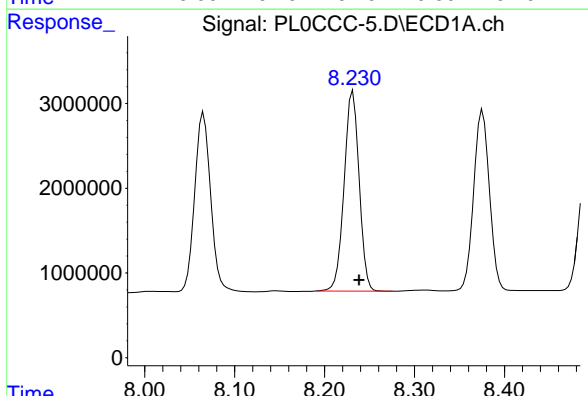


#15 Endosulfan II  
 R.T.: 8.376 min  
 Delta R.T.: -0.007 min  
 Response: 26103150  
 Conc: 52.87 ng/ml

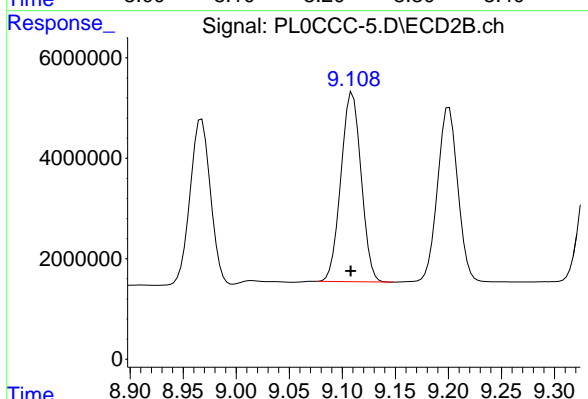
Instrument :  
 ECD\_L  
 ClientSampled :



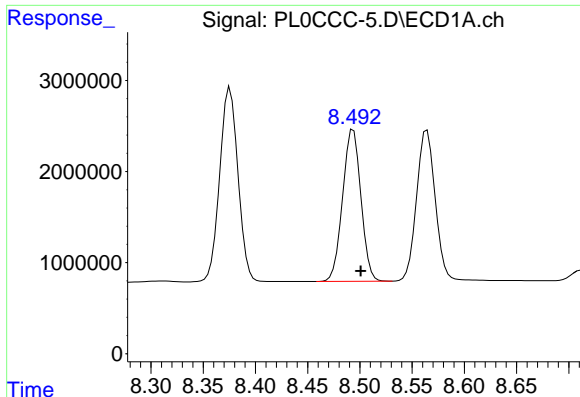
#15 Endosulfan II  
 R.T.: 9.201 min  
 Delta R.T.: 0.000 min  
 Response: 46366535  
 Conc: 51.16 ng/ml



#16 4,4'-DDD  
 R.T.: 8.232 min  
 Delta R.T.: -0.007 min  
 Response: 27409739  
 Conc: 61.36 ng/ml



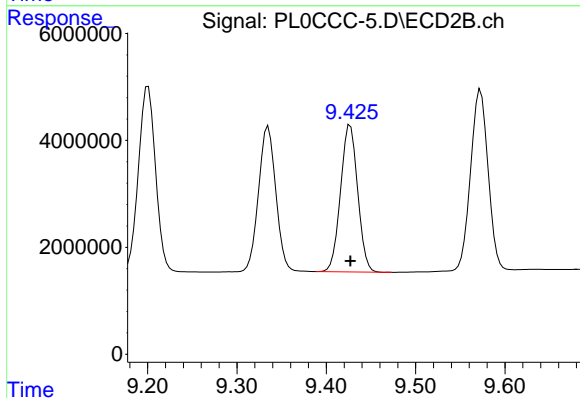
#16 4,4'-DDD  
 R.T.: 9.110 min  
 Delta R.T.: 0.002 min  
 Response: 49948197  
 Conc: 58.66 ng/ml



#17 4,4'-DDT

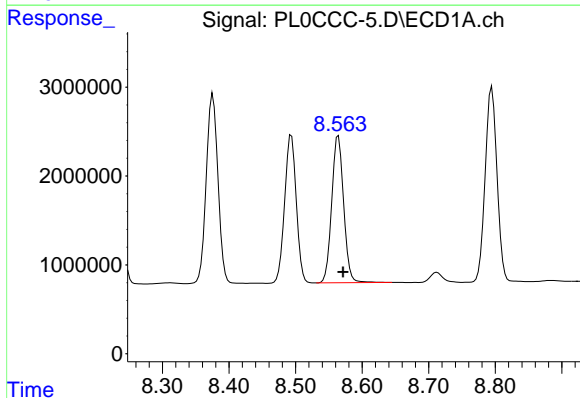
R.T.: 8.494 min  
 Delta R.T.: -0.007 min  
 Response: 20324556  
 Conc: 40.52 ng/ml

Instrument :  
 ECD\_L  
 ClientSampleId :



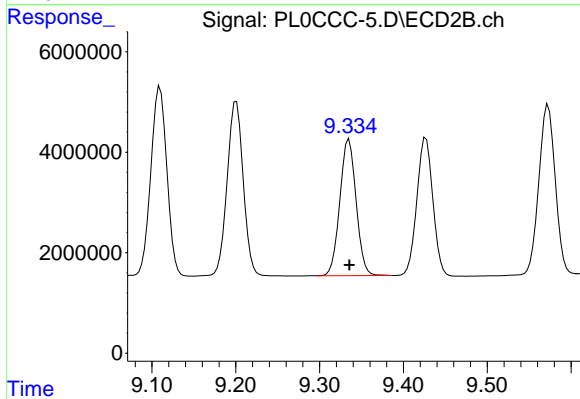
#17 4,4'-DDT

R.T.: 9.427 min  
 Delta R.T.: 0.000 min  
 Response: 36562395  
 Conc: 38.74 ng/ml



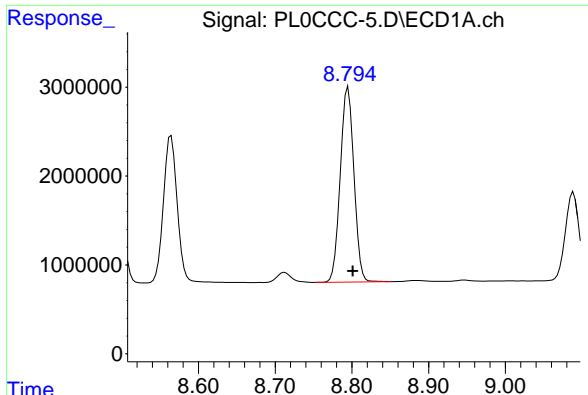
#18 Endrin aldehyde

R.T.: 8.564 min  
 Delta R.T.: -0.007 min  
 Response: 20659937  
 Conc: 52.15 ng/ml



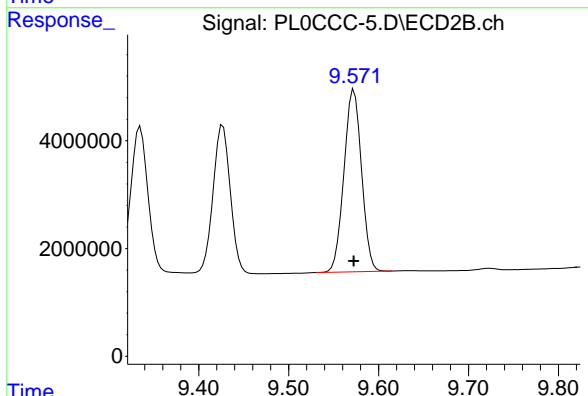
#18 Endrin aldehyde

R.T.: 9.335 min  
 Delta R.T.: 0.000 min  
 Response: 36670481  
 Conc: 50.88 ng/ml

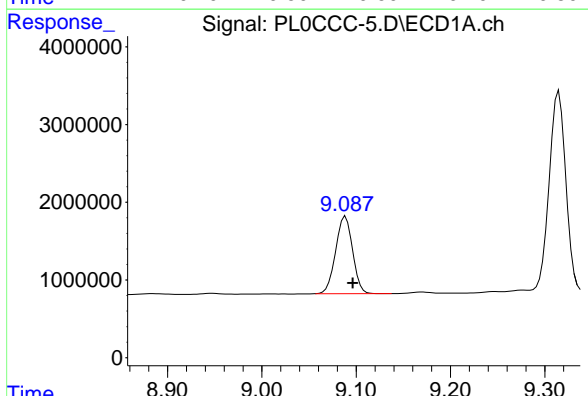


#19 Endosulfan Sulfate  
 R.T.: 8.795 min  
 Delta R.T.: -0.006 min  
 Response: 27193624  
 Conc: 51.75 ng/ml

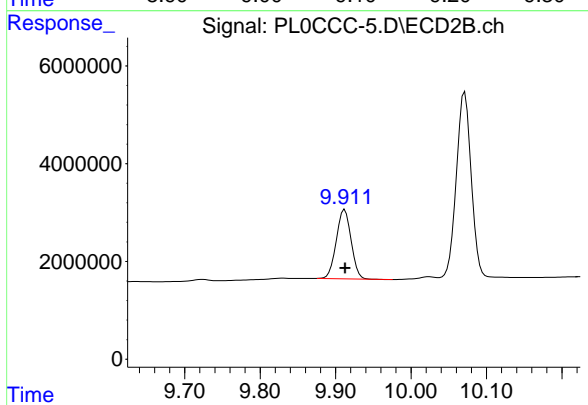
Instrument :  
 ECD\_L  
 ClientSampleId :



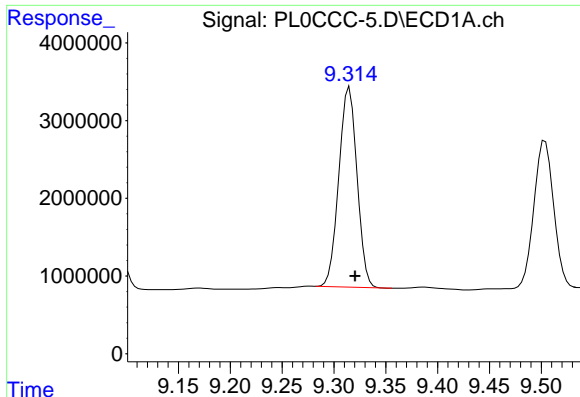
#19 Endosulfan Sulfate  
 R.T.: 9.573 min  
 Delta R.T.: 0.000 min  
 Response: 45981021  
 Conc: 51.06 ng/ml



#20 Methoxychlor  
 R.T.: 9.089 min  
 Delta R.T.: -0.007 min  
 Response: 12451591  
 Conc: 39.81 ng/ml



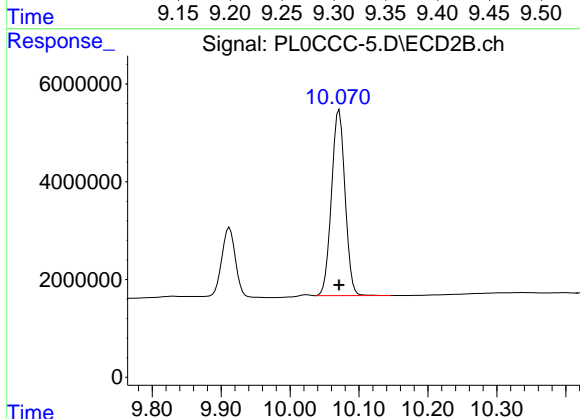
#20 Methoxychlor  
 R.T.: 9.912 min  
 Delta R.T.: 0.000 min  
 Response: 19374534  
 Conc: 38.14 ng/ml



#21 Endrin ketone

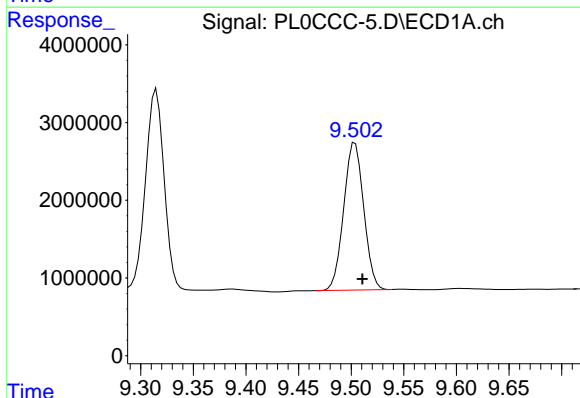
R.T.: 9.315 min  
 Delta R.T.: -0.005 min  
 Response: 31393343  
 Conc: 53.02 ng/ml

Instrument :  
 ECD\_L  
 ClientSampled :



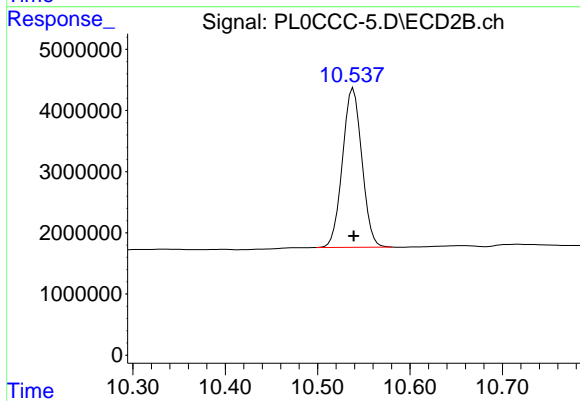
#21 Endrin ketone

R.T.: 10.071 min  
 Delta R.T.: 0.000 min  
 Response: 51902111  
 Conc: 52.04 ng/ml



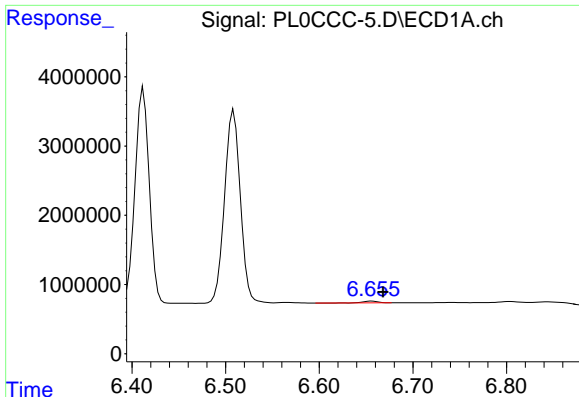
#22 Mirex

R.T.: 9.504 min  
 Delta R.T.: -0.007 min  
 Response: 25188276  
 Conc: 51.01 ng/ml



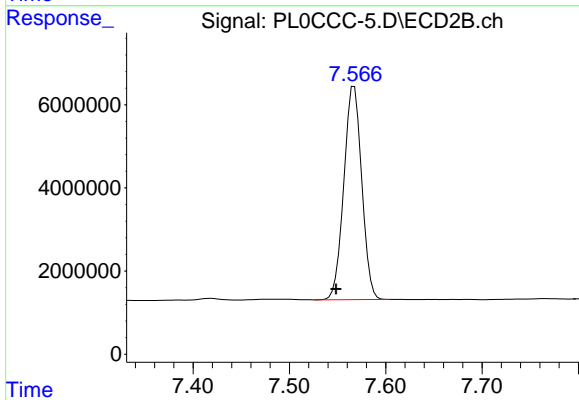
#22 Mirex

R.T.: 10.539 min  
 Delta R.T.: 0.000 min  
 Response: 37921134  
 Conc: 49.02 ng/ml

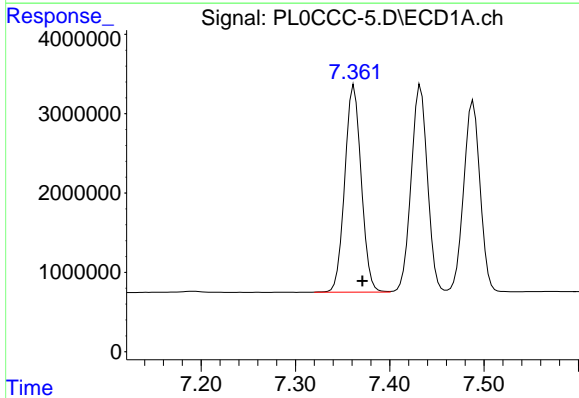


#24 Chlordane-2  
 R.T.: 6.656 min  
 Delta R.T.: -0.012 min  
 Response: 253454  
 Conc: 11.82 ng/ml

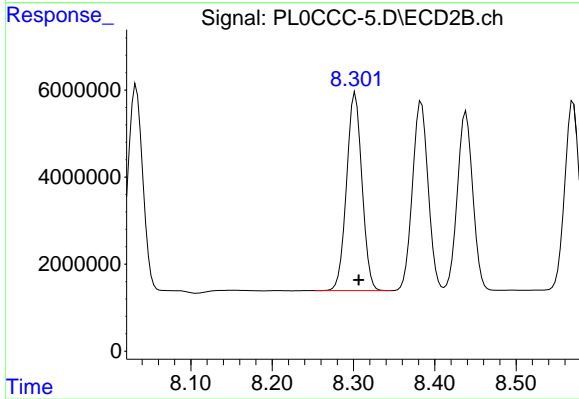
Instrument :  
 ECD\_L  
 ClientSampled :



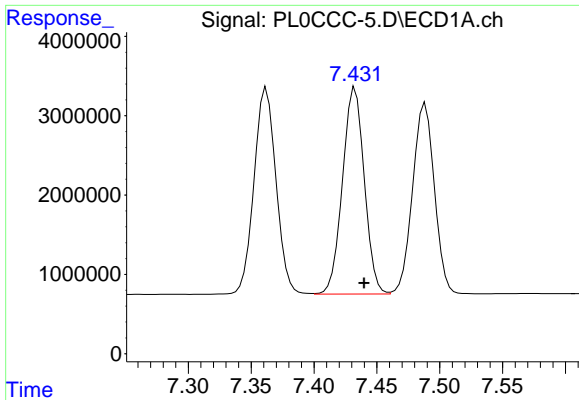
#24 Chlordane-2  
 R.T.: 7.567 min  
 Delta R.T.: 0.019 min  
 Response: 66052074  
 Conc: 1587.60 ng/ml



#25 Chlordane-3  
 R.T.: 7.362 min  
 Delta R.T.: -0.009 min  
 Response: 31661056  
 Conc: 587.91 ng/ml

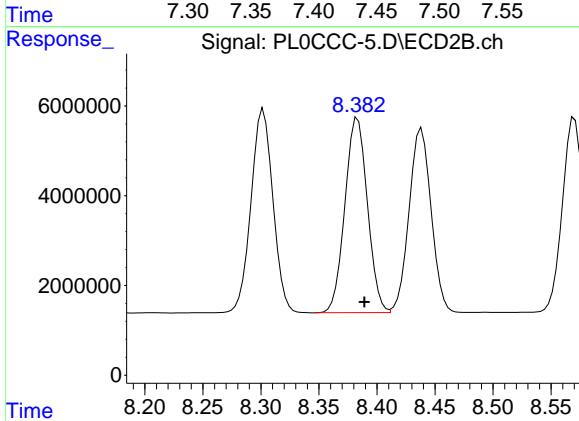


#25 Chlordane-3  
 R.T.: 8.302 min  
 Delta R.T.: -0.004 min  
 Response: 59734563  
 Conc: 385.71 ng/ml

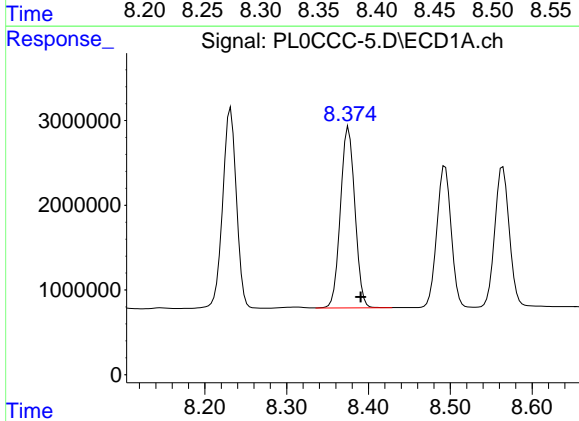


#26 Chlordane-4  
 R.T.: 7.433 min  
 Delta R.T.: -0.007 min  
 Response: 31368864  
 Conc: 555.60 ng/ml

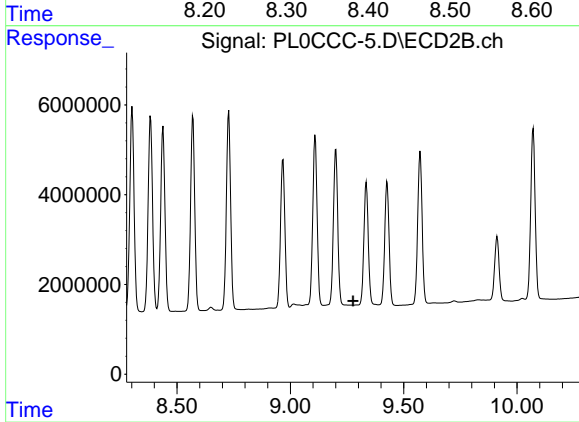
Instrument :  
 ECD\_L  
 ClientSampleId :



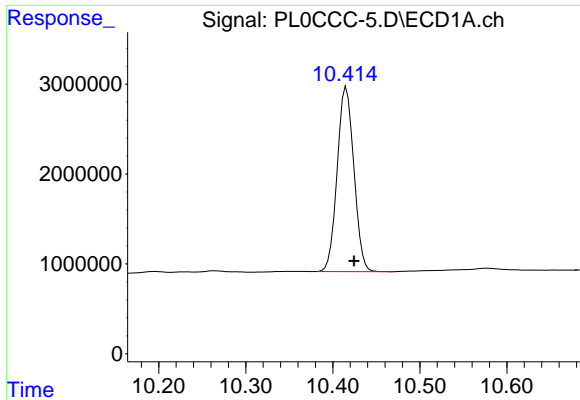
#26 Chlordane-4  
 R.T.: 8.383 min  
 Delta R.T.: -0.006 min  
 Response: 58666382  
 Conc: 312.92 ng/ml



#27 Chlordane-5  
 R.T.: 8.376 min  
 Delta R.T.: -0.015 min  
 Response: 26103150  
 Conc: 1296.97 ng/ml



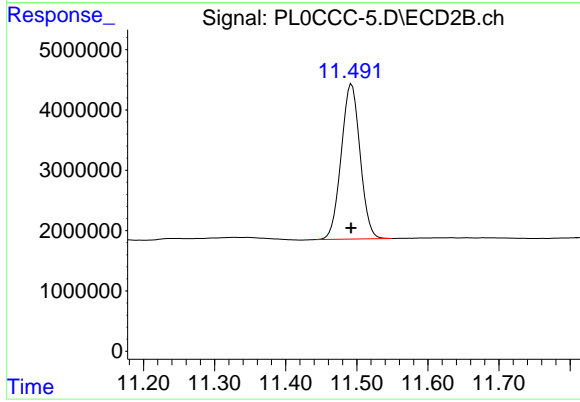
#27 Chlordane-5  
 R.T.: 0.000 min  
 Exp R.T.: 9.277 min  
 Response: 0  
 Conc: N.D.



#28 Decachlorobiphenyl

R.T.: 10.416 min  
Delta R.T.: -0.009 min  
Response: 27438534  
Conc: 48.79 ng/ml

Instrument :  
ECD\_L  
ClientSampleId :



#28 Decachlorobiphenyl

R.T.: 11.493 min  
Delta R.T.: 0.000 min  
Response: 47395815  
Conc: 53.13 ng/ml