

Data Path : Z:\pestpcbsrv\HPCHEM1\ECD\_L\Data\PL073018\  
 Data File : PL038717.D  
 Signal(s) : Signal #1: ECD1A.ch Signal #2: ECD2B.ch  
 Acq On : 30 Jul 2018 17:11  
 Operator : AJ\SJ  
 Sample : PSTDCCC050  
 Misc :  
 ALS Vial : 4 Sample Multiplier: 1

**Instrument :**  
 ECD\_L  
**ClientSampled :**  
 PSTDCCC050

**Manual Integrations**  
**APPROVED**  
 Sohil  
 7/31/2018 1:43:10 PM

Integration File signal 1: autoint1.e  
 Integration File signal 2: autoint2.e  
 Quant Time: Jul 31 01:11:47 2018  
 Quant Method : Z:\PESTPCBSRV\HPCHEM1\ECD\_L\methods\PL071318.M  
 Quant Title : GC Extractables  
 QLast Update : Sat Jul 14 00:12:12 2018  
 Response via : Initial Calibration  
 Integrator: ChemStation

Volume Inj. : 2 µl  
 Signal #1 Phase : ZB-MR1 Signal #2 Phase: ZB-MR2  
 Signal #1 Info : 30M x 0.32mm x0.5 Signal #2 Info : 30M x 0.32mm x0.25µm

	Compound	RT#1	RT#2	Resp#1	Resp#2	ng/ml	ng/ml
-----							
System Monitoring Compounds							
1)	SA Tetrachlo...	3.324	3.927	342.7E6	132.2E6	46.017	50.368
28)	SA Decachlor...	7.992	8.933	338.5E6	120.9E6	44.618	49.441
Target Compounds							
2)	A alpha-BHC	3.753	4.306	573.6E6	207.9E6	48.548	53.722
3)	MA gamma-BHC...	4.029	4.586	515.1E6	185.8E6	49.133	51.450
4)	MA Heptachlor	4.312	5.096	512.2E6	180.9E6	48.149	56.584
5)	MB Aldrin	4.551	5.398	518.8E6	171.3E6	49.568	55.516
6)	B beta-BHC	4.283	4.748	233.3E6	85309484	49.420	56.240
7)	B delta-BHC	4.477	4.962	545.8E6	187.0E6	50.282	56.374
8)	B Heptachlo...	4.987	5.778	482.7E6	156.8E6	51.200m	55.186
9)	A Endosulfan I	5.318	6.131	450.7E6	137.3E6	52.101	53.391
10)	B gamma-Chl...	5.210	6.010	502.0E6	154.0E6	50.793	53.134
11)	B alpha-Chl...	5.267	6.084	482.8E6	152.8E6	51.008	53.309
12)	B 4,4'-DDE	5.435	6.240	489.6E6	145.2E6	51.063	54.292
13)	MA Dieldrin	5.558	6.384	493.1E6	144.4E6	51.306	53.065
14)	MA Endrin	5.812	6.598	429.6E6	122.6E6	49.445	51.322
15)	B Endosulfa...	6.085	6.802	420.8E6	123.8E6	53.062m	51.533
16)	A 4,4'-DDD	5.947	6.722	419.1E6	116.2E6	57.136	54.271
17)	MA 4,4'-DDT	6.181	7.020	311.4E6	91164644	41.915	42.759
18)	B Endrin al...	6.255	6.924	330.3E6	105.2E6	51.878	53.889
19)	B Endosulfa...	6.465	7.147	391.6E6	116.5E6	51.842	53.463
20)	A Methoxychlor	6.729	7.476	170.2E6	53689886	44.242	47.152
21)	B Endrin ke...	6.948	7.609	414.7E6	124.8E6	52.850	52.370m

(f)=RT Delta > 1/2 Window (#)=Amounts differ by > 25% (m)=manual int.

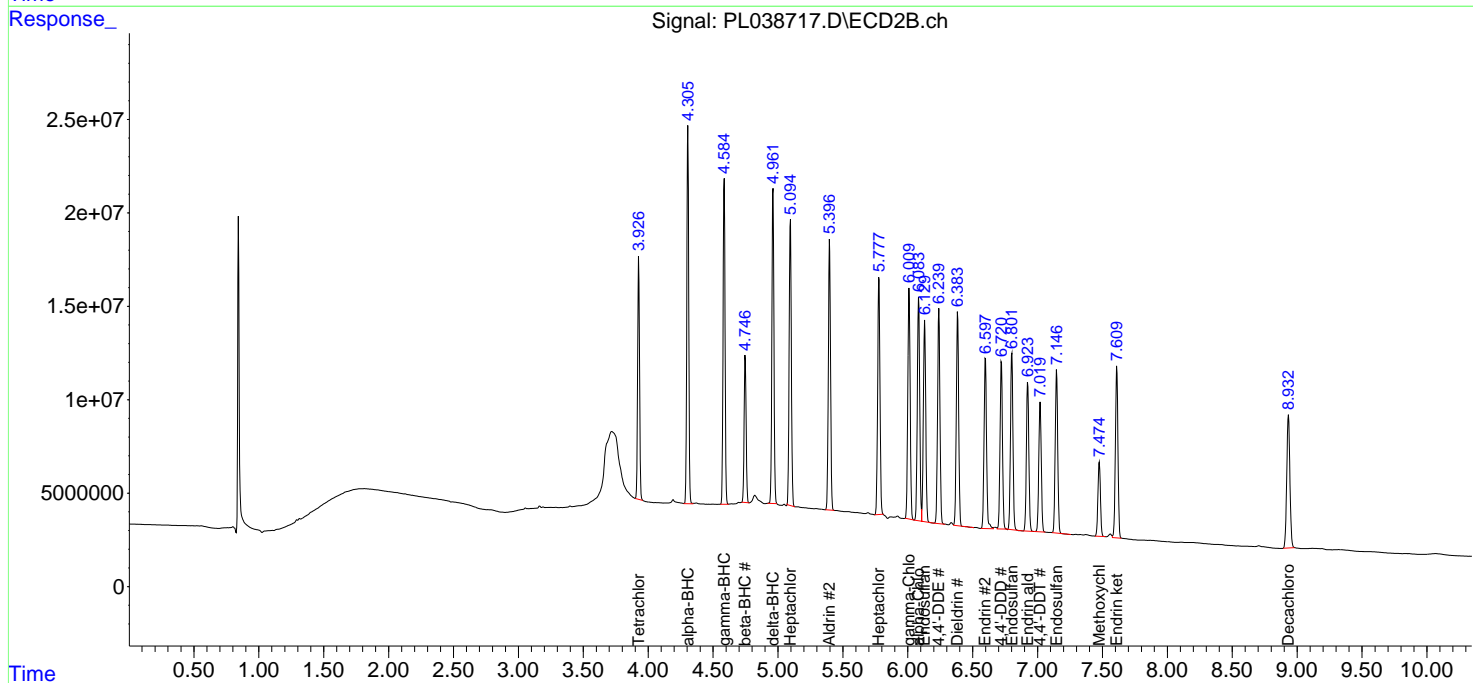
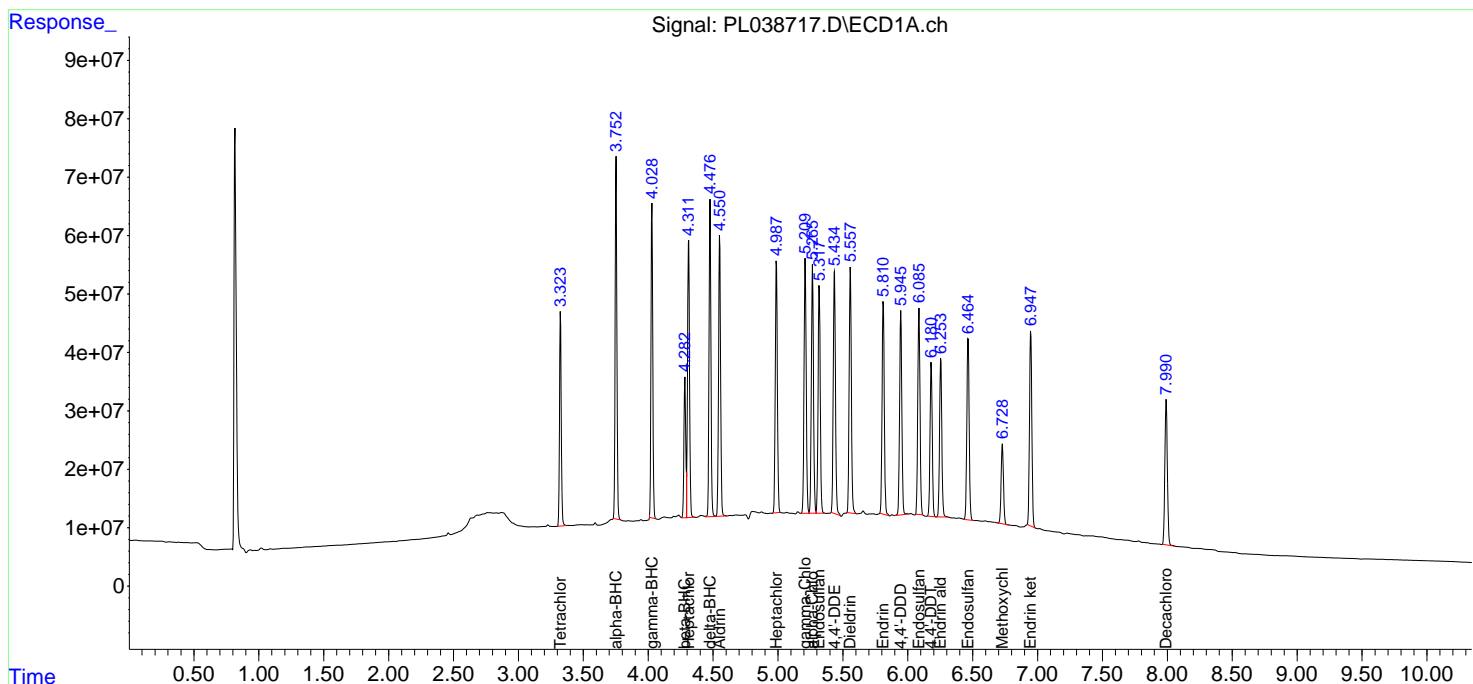
Data Path : Z:\pestpcbsrv\HPCHEM1\ECD\_L\Data\PL073018\  
 Data File : PL038717.D  
 Signal(s) : Signal #1: ECD1A.ch Signal #2: ECD2B.ch  
 Acq On : 30 Jul 2018 17:11  
 Operator : AJ\SJ  
 Sample : PSTDCCC050  
 Misc :  
 ALS Vial : 4 Sample Multiplier: 1

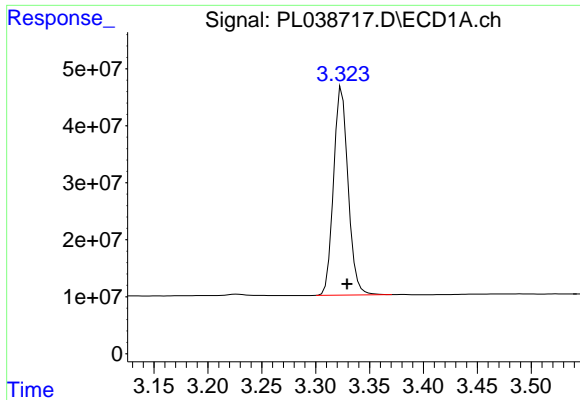
Instrument :  
 ECD\_L  
 Client Sampled :  
 PSTDCCC050

Manual Integrations  
**APPROVED**  
 Sohil  
 7/31/2018 1:43:10 PM

Integration File signal 1: autoint1.e  
 Integration File signal 2: autoint2.e  
 Quant Time: Jul 31 01:11:47 2018  
 Quant Method : Z:\PESTPCBSRV\HPCHEM1\ECD\_L\methods\PL071318.M  
 Quant Title : GC Extractables  
 QLast Update : Sat Jul 14 00:12:12 2018  
 Response via : Initial Calibration  
 Integrator: ChemStation

Volume Inj. : 2 µl  
 Signal #1 Phase : ZB-MR1 Signal #2 Phase: ZB-MR2  
 Signal #1 Info : 30M x 0.32mm x0.5 Signal #2 Info : 30M x 0.32mm x0.25µm

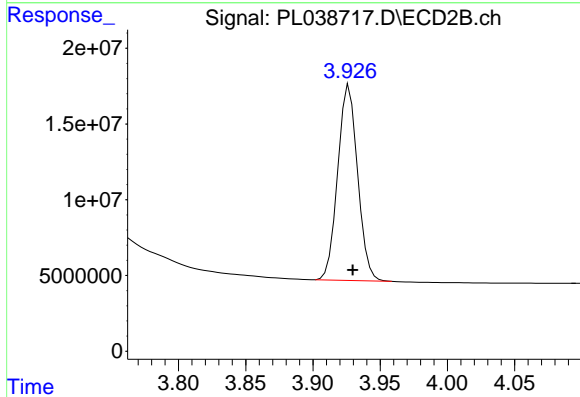




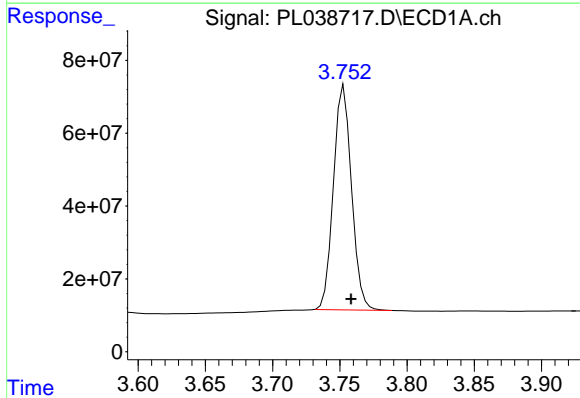
#1 Tetrachloro-m-xylene  
 R.T.: 3.324 min  
 Delta R.T.: -0.005 min  
 Response: 342664289  
 Conc: 46.02 ng/ml

Instrument :  
 ECD\_L  
 ClientSampled :  
 PSTDCCC050

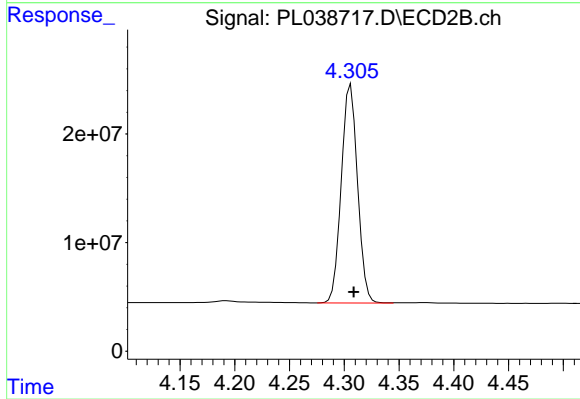
Manual Integrations  
 APPROVED  
 Sohil  
 7/31/2018 1:43:10 PM



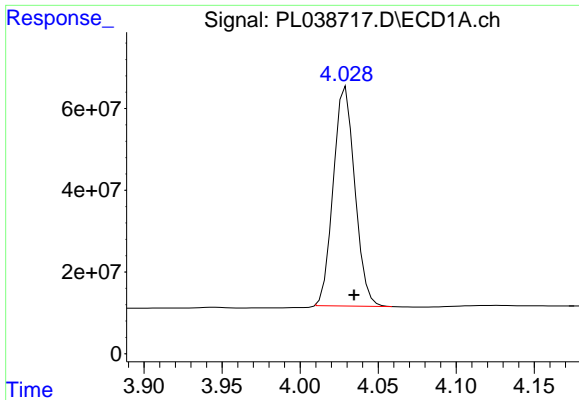
#1 Tetrachloro-m-xylene  
 R.T.: 3.927 min  
 Delta R.T.: -0.003 min  
 Response: 132214013  
 Conc: 50.37 ng/ml



#2 alpha-BHC  
 R.T.: 3.753 min  
 Delta R.T.: -0.005 min  
 Response: 573618534  
 Conc: 48.55 ng/ml



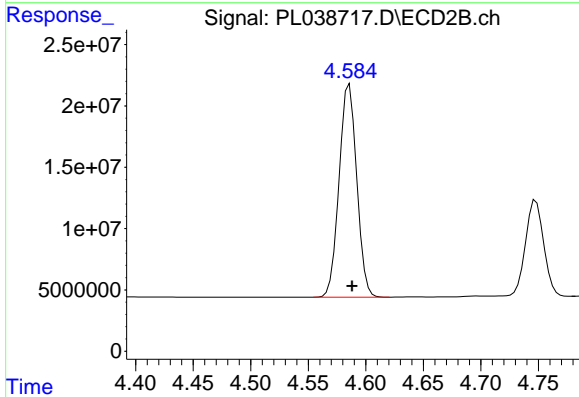
#2 alpha-BHC  
 R.T.: 4.306 min  
 Delta R.T.: -0.003 min  
 Response: 207912414  
 Conc: 53.72 ng/ml



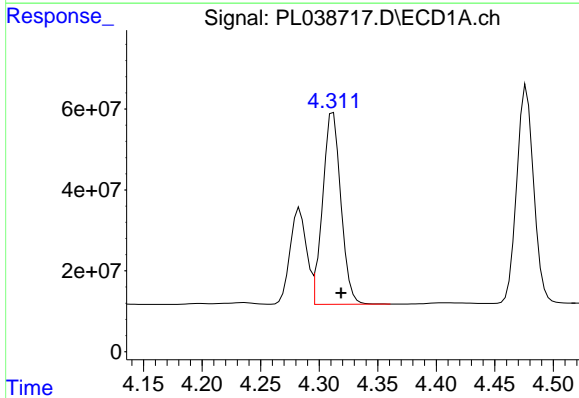
#3 gamma-BHC (Lindane)  
 R.T.: 4.029 min  
 Delta R.T.: -0.005 min  
 Response: 515101282  
 Conc: 49.13 ng/ml

Instrument :  
 ECD\_L  
 ClientSampled :  
 PSTDCCC050

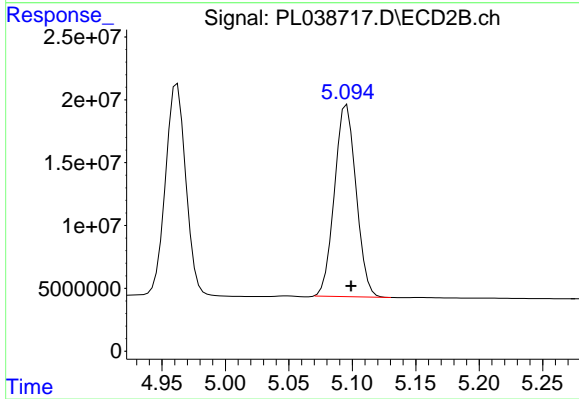
Manual Integrations  
 APPROVED  
 Sohil  
 7/31/2018 1:43:10 PM



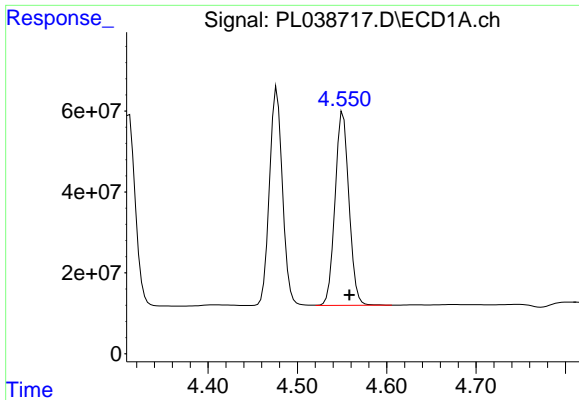
#3 gamma-BHC (Lindane)  
 R.T.: 4.586 min  
 Delta R.T.: -0.003 min  
 Response: 185825392  
 Conc: 51.45 ng/ml



#4 Heptachlor  
 R.T.: 4.312 min  
 Delta R.T.: -0.007 min  
 Response: 512182457  
 Conc: 48.15 ng/ml



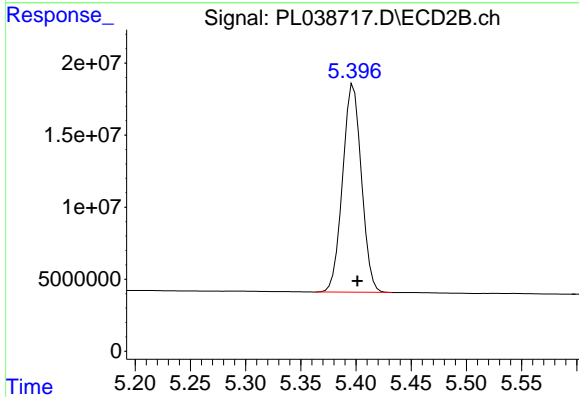
#4 Heptachlor  
 R.T.: 5.096 min  
 Delta R.T.: -0.003 min  
 Response: 180856030  
 Conc: 56.58 ng/ml



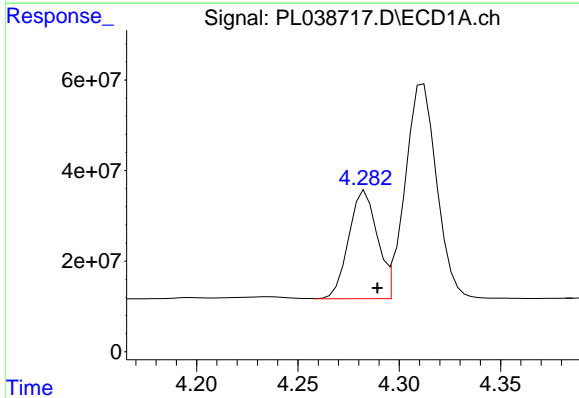
#5 Aldrin  
 R.T.: 4.551 min  
 Delta R.T.: -0.007 min  
 Response: 518840812  
 Conc: 49.57 ng/ml

**Instrument :**  
 ECD\_L  
**ClientSampled :**  
 PSTDCCC050

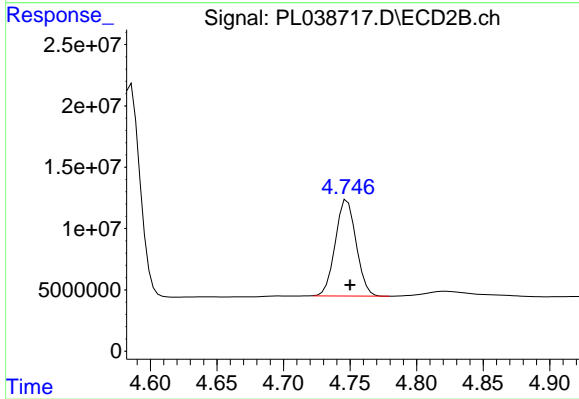
**Manual Integrations**  
**APPROVED**  
 Sohil  
 7/31/2018 1:43:10 PM



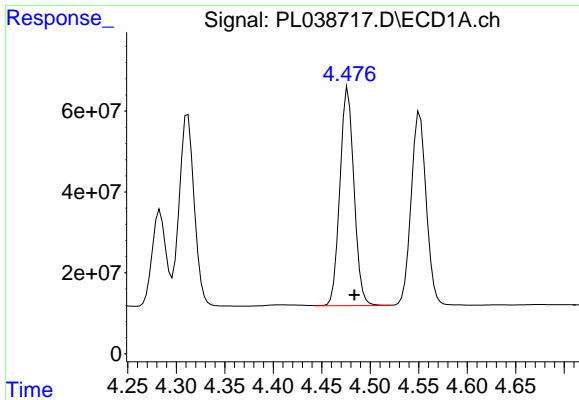
#5 Aldrin  
 R.T.: 5.398 min  
 Delta R.T.: -0.004 min  
 Response: 171334555  
 Conc: 55.52 ng/ml



#6 beta-BHC  
 R.T.: 4.283 min  
 Delta R.T.: -0.006 min  
 Response: 233281254  
 Conc: 49.42 ng/ml



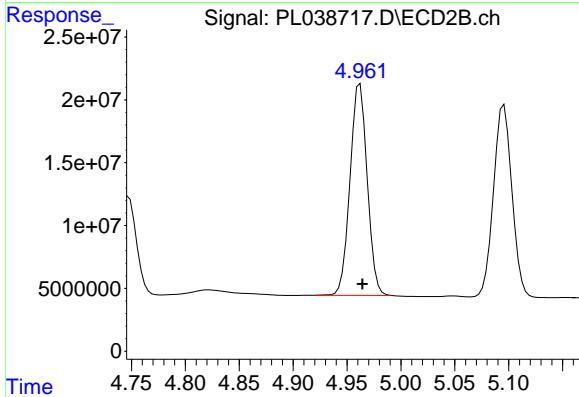
#6 beta-BHC  
 R.T.: 4.748 min  
 Delta R.T.: -0.002 min  
 Response: 85309484  
 Conc: 56.24 ng/ml



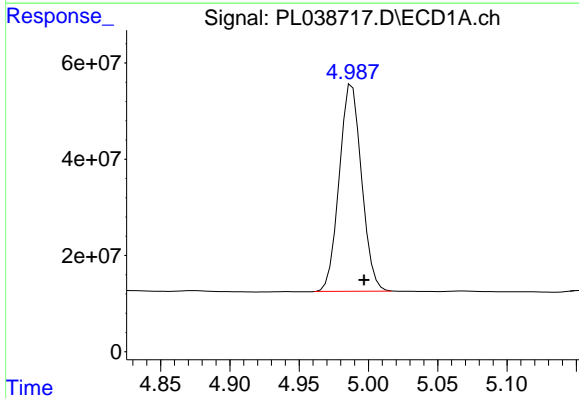
#7 delta-BHC  
 R.T.: 4.477 min  
 Delta R.T.: -0.006 min  
 Response: 545767529  
 Conc: 50.28 ng/ml

**Instrument :**  
 ECD\_L  
**ClientSampled :**  
 PSTDCCC050

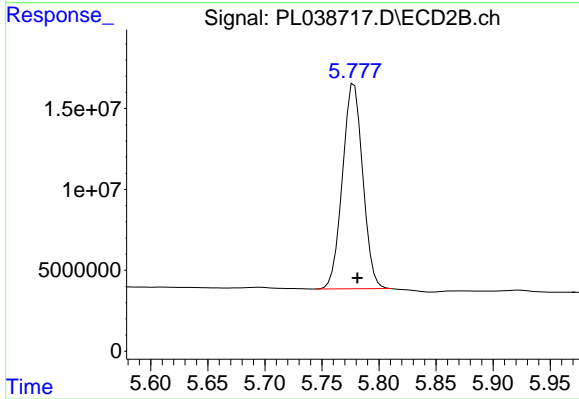
**Manual Integrations**  
**APPROVED**  
 Sohil  
 7/31/2018 1:43:10 PM



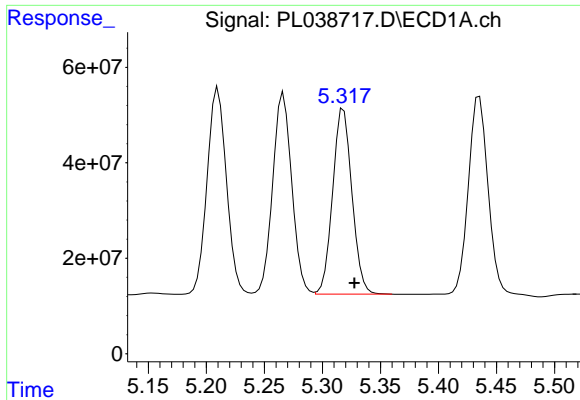
#7 delta-BHC  
 R.T.: 4.962 min  
 Delta R.T.: -0.002 min  
 Response: 186970903  
 Conc: 56.37 ng/ml



#8 Heptachlor epoxide  
 R.T.: 4.987 min  
 Delta R.T.: -0.010 min  
 Response: 482735756  
 Conc: 51.20 ng/ml m



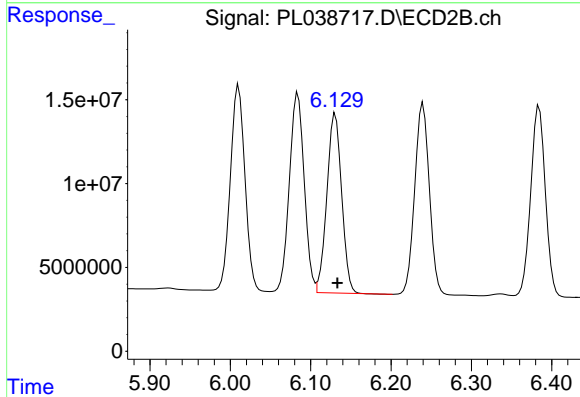
#8 Heptachlor epoxide  
 R.T.: 5.778 min  
 Delta R.T.: -0.003 min  
 Response: 156832427  
 Conc: 55.19 ng/ml



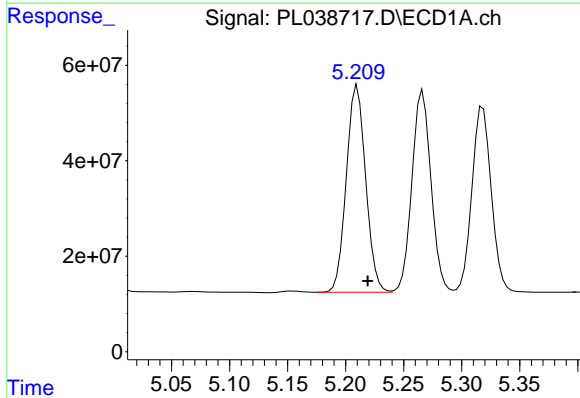
#9 Endosulfan I  
 R.T.: 5.318 min  
 Delta R.T.: -0.009 min  
 Response: 450657568  
 Conc: 52.10 ng/ml

Instrument :  
 ECD\_L  
 ClientSampleId :  
 PSTDCCC050

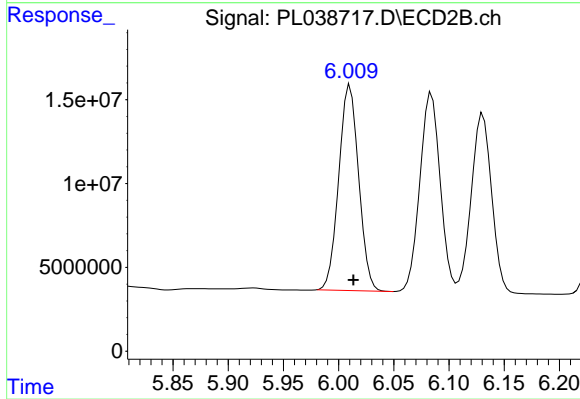
Manual Integrations  
 APPROVED  
 Sohil  
 7/31/2018 1:43:10 PM



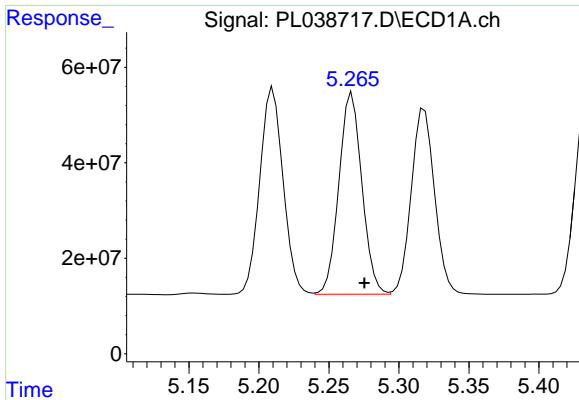
#9 Endosulfan I  
 R.T.: 6.131 min  
 Delta R.T.: -0.003 min  
 Response: 137310423  
 Conc: 53.39 ng/ml



#10 gamma-Chlordane  
 R.T.: 5.210 min  
 Delta R.T.: -0.009 min  
 Response: 502034206  
 Conc: 50.79 ng/ml



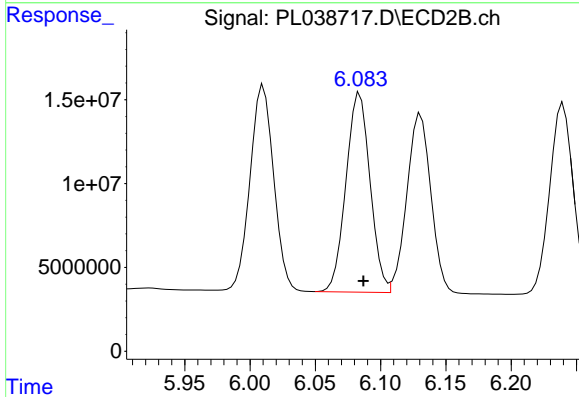
#10 gamma-Chlordane  
 R.T.: 6.010 min  
 Delta R.T.: -0.003 min  
 Response: 154046110  
 Conc: 53.13 ng/ml



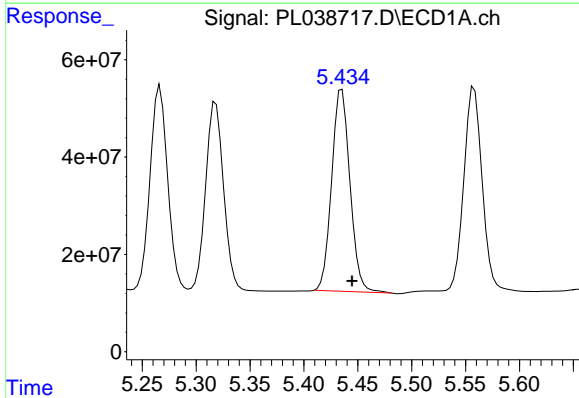
#11 alpha-Chlordane  
 R.T.: 5.267 min  
 Delta R.T.: -0.009 min  
 Response: 482834511  
 Conc: 51.01 ng/ml

Instrument :  
 ECD\_L  
 ClientSampled :  
 PSTDCCC050

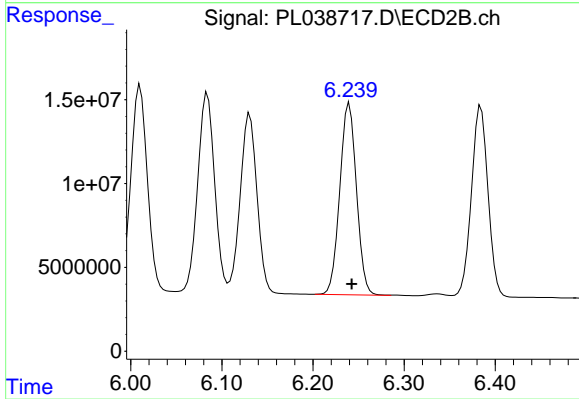
Manual Integrations  
 APPROVED  
 Sohil  
 7/31/2018 1:43:10 PM



#11 alpha-Chlordane  
 R.T.: 6.084 min  
 Delta R.T.: -0.003 min  
 Response: 152796747  
 Conc: 53.31 ng/ml

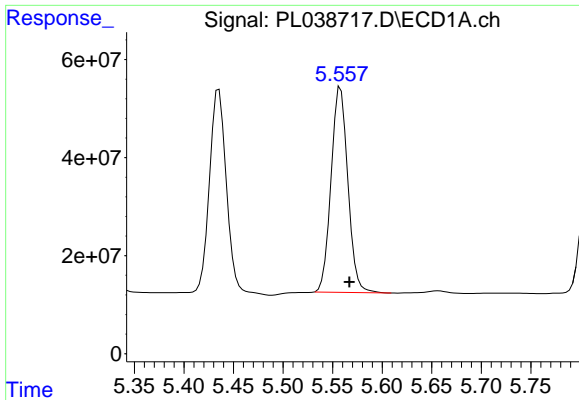


#12 4,4'-DDE  
 R.T.: 5.435 min  
 Delta R.T.: -0.009 min  
 Response: 489586775  
 Conc: 51.06 ng/ml



#12 4,4'-DDE  
 R.T.: 6.240 min  
 Delta R.T.: -0.003 min  
 Response: 145182307  
 Conc: 54.29 ng/ml

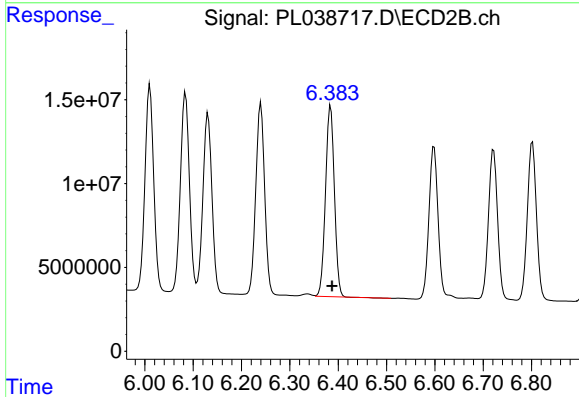




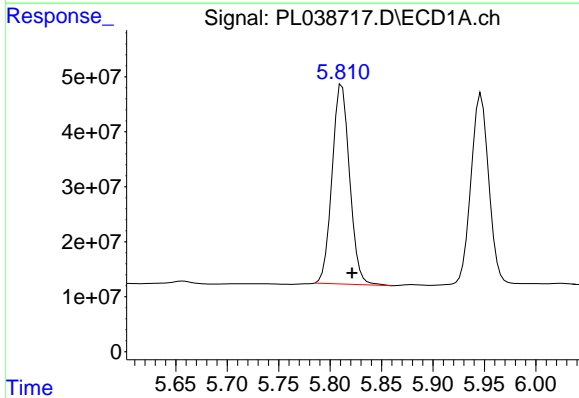
#13 Dieldrin  
 R.T.: 5.558 min  
 Delta R.T.: -0.009 min  
 Response: 493057900  
 Conc: 51.31 ng/ml

Instrument :  
 ECD\_L  
 ClientSampled :  
 PSTDCCC050

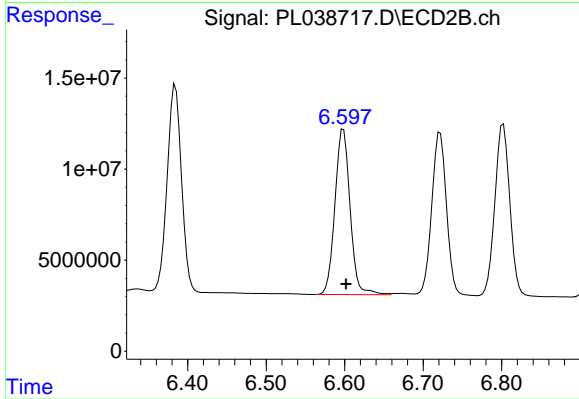
Manual Integrations  
 APPROVED  
 Sohil  
 7/31/2018 1:43:10 PM



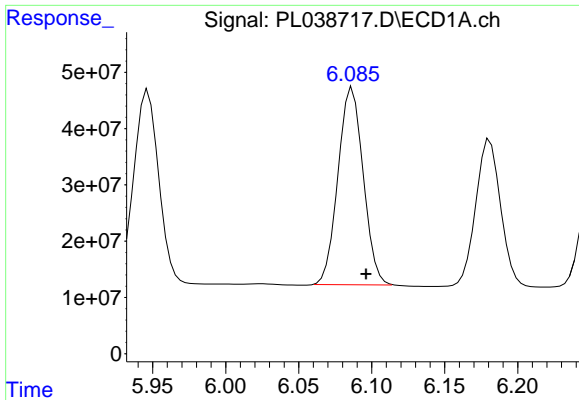
#13 Dieldrin  
 R.T.: 6.384 min  
 Delta R.T.: -0.003 min  
 Response: 144432011  
 Conc: 53.07 ng/ml



#14 Endrin  
 R.T.: 5.812 min  
 Delta R.T.: -0.010 min  
 Response: 429593807  
 Conc: 49.44 ng/ml



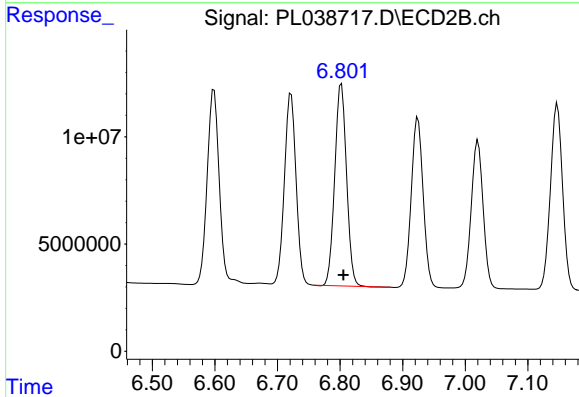
#14 Endrin  
 R.T.: 6.598 min  
 Delta R.T.: -0.003 min  
 Response: 122563314  
 Conc: 51.32 ng/ml



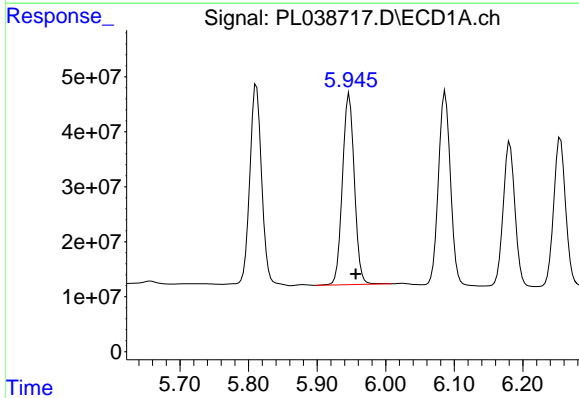
#15 Endosulfan II  
 R.T.: 6.085 min  
 Delta R.T.: -0.011 min  
 Response: 420788328  
 Conc: 53.06 ng/ml m

Instrument :  
 ECD\_L  
 ClientSampled :  
 PSTDCCC050

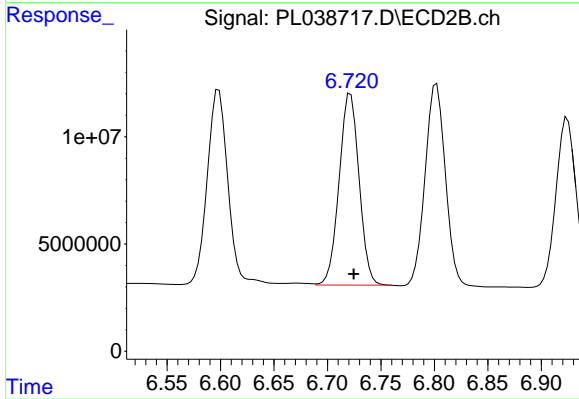
Manual Integrations  
 APPROVED  
 Sohil  
 7/31/2018 1:43:10 PM



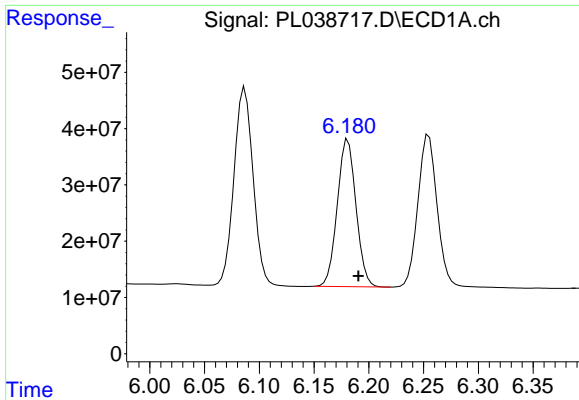
#15 Endosulfan II  
 R.T.: 6.802 min  
 Delta R.T.: -0.003 min  
 Response: 123751731  
 Conc: 51.53 ng/ml



#16 4,4'-DDD  
 R.T.: 5.947 min  
 Delta R.T.: -0.009 min  
 Response: 419125627  
 Conc: 57.14 ng/ml



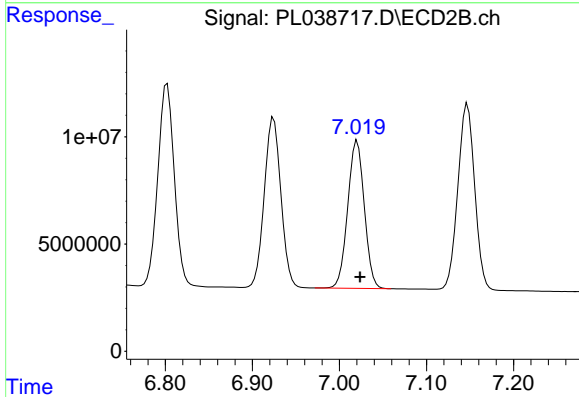
#16 4,4'-DDD  
 R.T.: 6.722 min  
 Delta R.T.: -0.003 min  
 Response: 116163537  
 Conc: 54.27 ng/ml



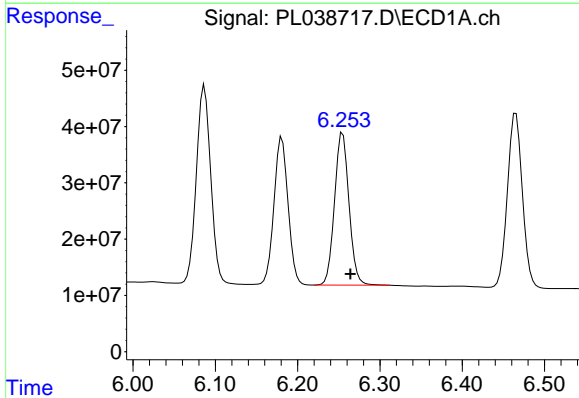
#17 4,4'-DDT  
 R.T.: 6.181 min  
 Delta R.T.: -0.009 min  
 Response: 311370846  
 Conc: 41.91 ng/ml

**Instrument :**  
 ECD\_L  
**ClientSampled :**  
 PSTDCCC050

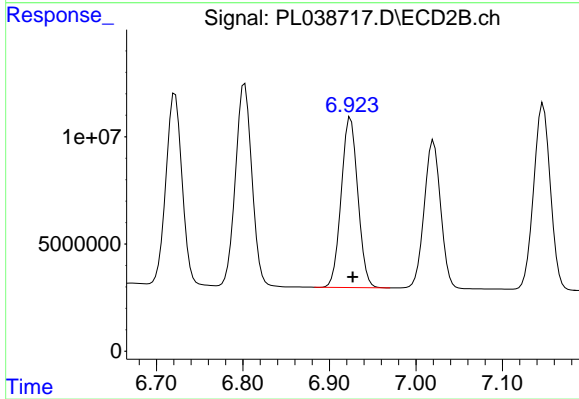
**Manual Integrations**  
**APPROVED**  
 Sohil  
 7/31/2018 1:43:10 PM



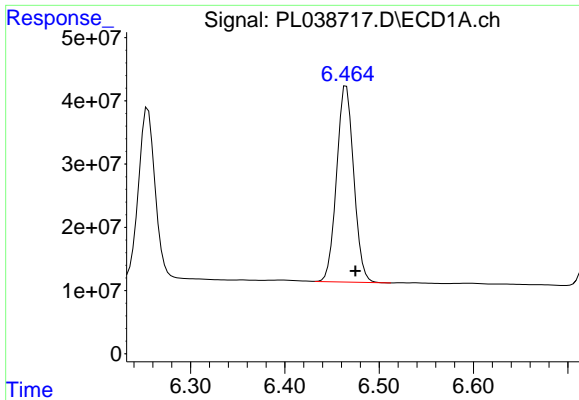
#17 4,4'-DDT  
 R.T.: 7.020 min  
 Delta R.T.: -0.003 min  
 Response: 91164644  
 Conc: 42.76 ng/ml



#18 Endrin aldehyde  
 R.T.: 6.255 min  
 Delta R.T.: -0.010 min  
 Response: 330338260  
 Conc: 51.88 ng/ml



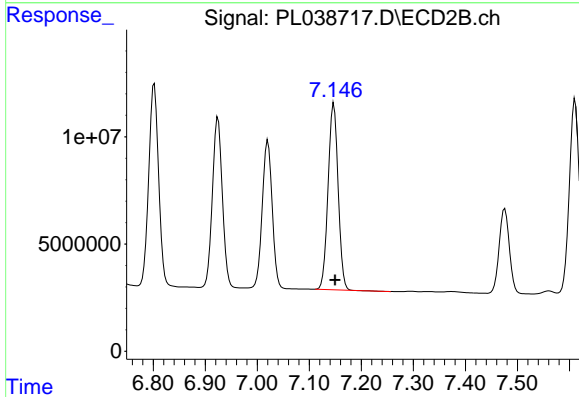
#18 Endrin aldehyde  
 R.T.: 6.924 min  
 Delta R.T.: -0.003 min  
 Response: 105158025  
 Conc: 53.89 ng/ml



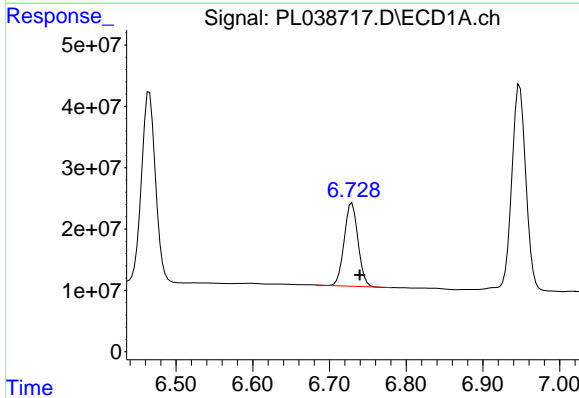
#19 Endosulfan Sulfate  
 R.T.: 6.465 min  
 Delta R.T.: -0.010 min  
 Response: 391578811  
 Conc: 51.84 ng/ml

Instrument :  
 ECD\_L  
 ClientSampled :  
 PSTDCCC050

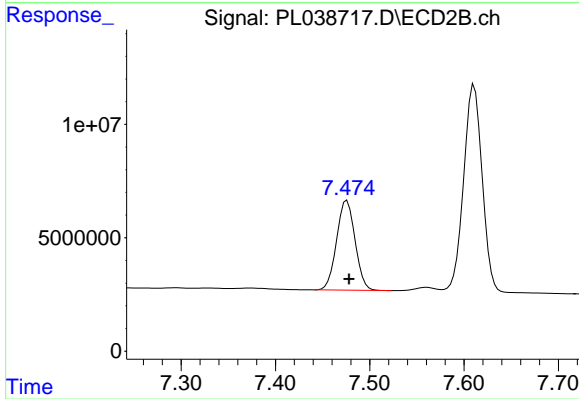
Manual Integrations  
 APPROVED  
 Sohil  
 7/31/2018 1:43:10 PM



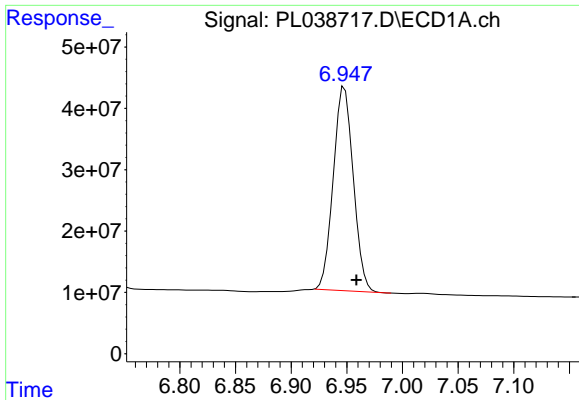
#19 Endosulfan Sulfate  
 R.T.: 7.147 min  
 Delta R.T.: -0.002 min  
 Response: 116537593  
 Conc: 53.46 ng/ml



#20 Methoxychlor  
 R.T.: 6.729 min  
 Delta R.T.: -0.010 min  
 Response: 170221777  
 Conc: 44.24 ng/ml



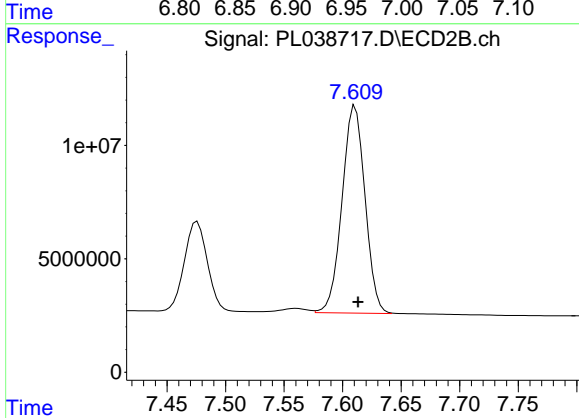
#20 Methoxychlor  
 R.T.: 7.476 min  
 Delta R.T.: -0.002 min  
 Response: 53689886  
 Conc: 47.15 ng/ml



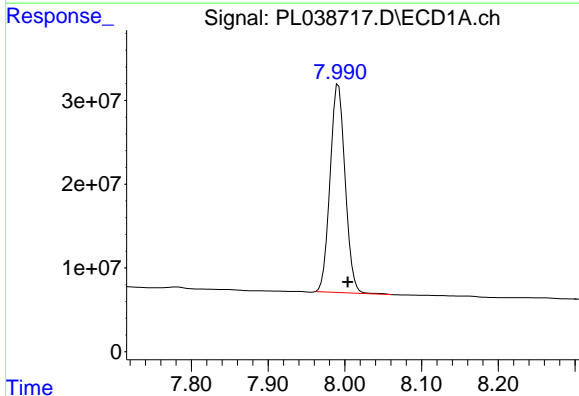
#21 Endrin ketone  
 R.T.: 6.948 min  
 Delta R.T.: -0.010 min  
 Response: 414660387  
 Conc: 52.85 ng/ml

**Instrument :**  
 ECD\_L  
**ClientSampled :**  
 PSTDCCC050

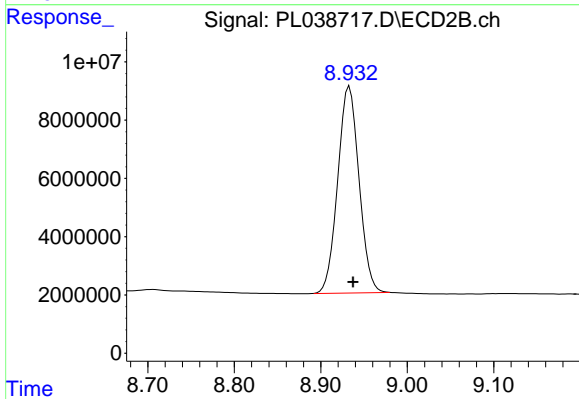
**Manual Integrations**  
**APPROVED**  
 Sohil  
 7/31/2018 1:43:10 PM



#21 Endrin ketone  
 R.T.: 7.609 min  
 Delta R.T.: -0.004 min  
 Response: 124825870  
 Conc: 52.37 ng/ml m



#28 Decachlorobiphenyl  
 R.T.: 7.992 min  
 Delta R.T.: -0.012 min  
 Response: 338469727  
 Conc: 44.62 ng/ml



#28 Decachlorobiphenyl  
 R.T.: 8.933 min  
 Delta R.T.: -0.004 min  
 Response: 120856826  
 Conc: 49.44 ng/ml