

Data Path : Z:\pestpcbsrv\HPCHEM1\ECD_L\Data\PL073124\
 Data File : PL090713.D
 Signal(s) : Signal #1: ECD1A.ch Signal #2: ECD2B.ch
 Acq On : 31 Jul 2024 17:20
 Operator : AR\AJ
 Sample : P3396-04
 Misc :
 ALS Vial : 19 Sample Multiplier: 1

Instrument :
 ECD_L
 ClientSampleId :
 P001-CF02-01

Integration File signal 1: autoint1.e
 Integration File signal 2: autoint2.e
 Quant Time: Aug 01 01:37:17 2024
 Quant Method : Z:\pestpcbsrv\HPCHEM1\ECD_L\methods\PL071524.M
 Quant Title : GC Extractables
 QLast Update : Mon Jul 15 14:16:48 2024
 Response via : Initial Calibration
 Integrator: ChemStation

Volume Inj. : 1 µl
 Signal #1 Phase : ZB-MR2 Signal #2 Phase: ZB-MR1
 Signal #1 Info : 30M x 0.32mm x0.2 Signal #2 Info : 30M x 0.32mm x0.5µm

Compound	RT#1	RT#2	Resp#1	Resp#2	ng/ml	ng/ml

System Monitoring Compounds						
1) SA Tetrachlo...	3.546	2.788	41564645	35913925	19.962	21.340
28) SA Decachlor...	9.058	7.930	25324647	28013533	19.057	19.212
Target Compounds						
3) MA gamma-BHC...	0.000	3.639f	0	742702	N.D.	0.322 #
4) MA Heptachlor	0.000	3.981f	0	55790	N.D.	0.025 #
5) MB Aldrin	0.000	4.257	0	493066	N.D.	0.232 #
6) B beta-BHC	0.000	3.922	0	187496	N.D.	0.182 #
7) B delta-BHC	0.000	4.137	0	113332	N.D.	0.052 #
8) B Heptachlo...	5.689	4.755	3432905	-4709	1.461	N.D. #
10) B gamma-Chl...	5.953	4.979f	10532629	24048	4.530	0.012 #
12) B 4,4'-DDE	0.000	5.248	0	67190	N.D.	0.038 #
13) MA Dieldrin	0.000	5.378	0	244741	N.D.	0.125 #
14) MA Endrin	0.000	5.674f	0	147285	N.D.	0.086 #
15) B Endosulfa...	0.000	5.951	0	140574	N.D.	0.082 #
16) A 4,4'-DDD	0.000	5.822f	0	90495	N.D.	0.060 #
17) MA 4,4'-DDT	0.000	6.061	0	32545	N.D.	0.022 #
18) B Endrin al...	0.000	6.111f	0	64011	N.D.	0.049 #
19) B Endosulfa...	0.000	6.353	0	28960	N.D.	0.018 #
22) Mirex	0.000	7.044	0	22079	N.D.	0.015 #
23) Chlordane-1	0.000	3.796	0	152165	N.D.	2.458 #
24) Chlordane-2	0.000	4.384	0	569157	N.D.	7.505 #
25) Chlordane-3	5.953	4.979f	10532629	24048	31.815	0.116 #
27) Chlordane-5	0.000	5.752f	0	571626	N.D.	9.483 #

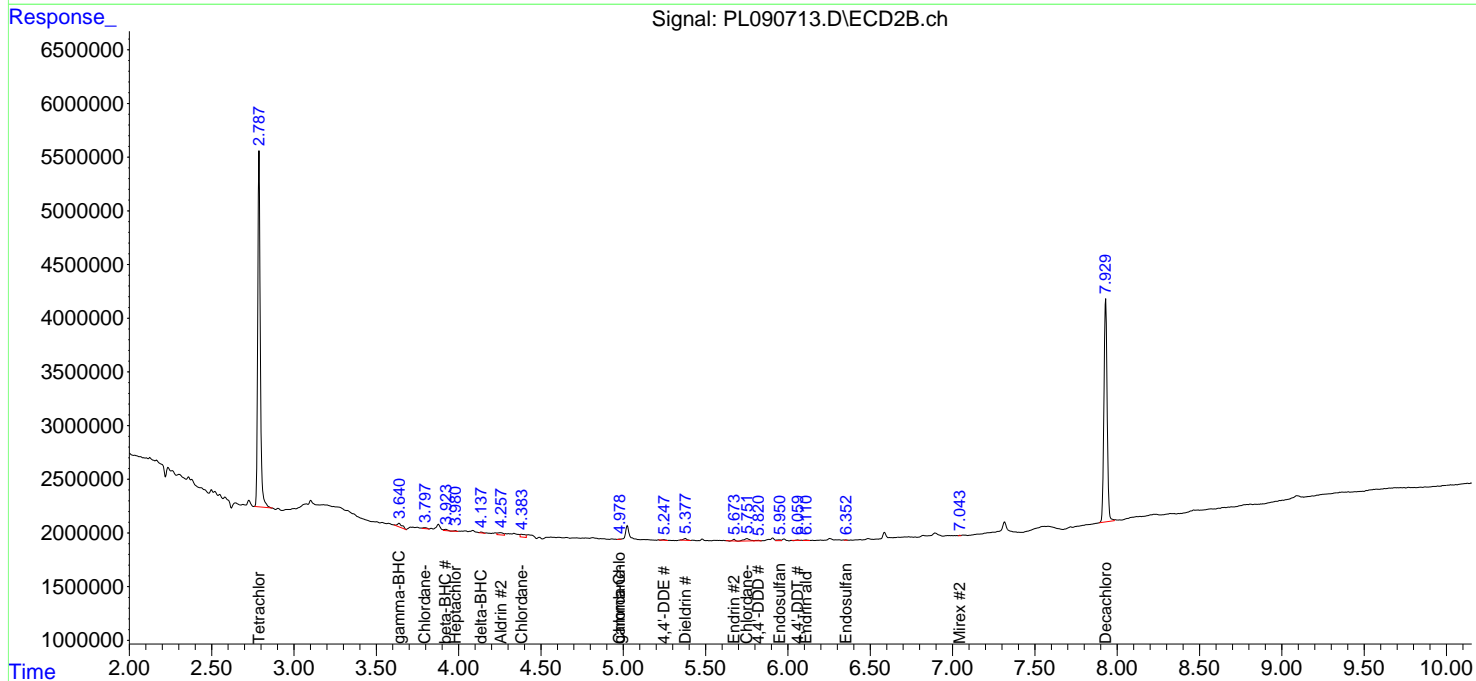
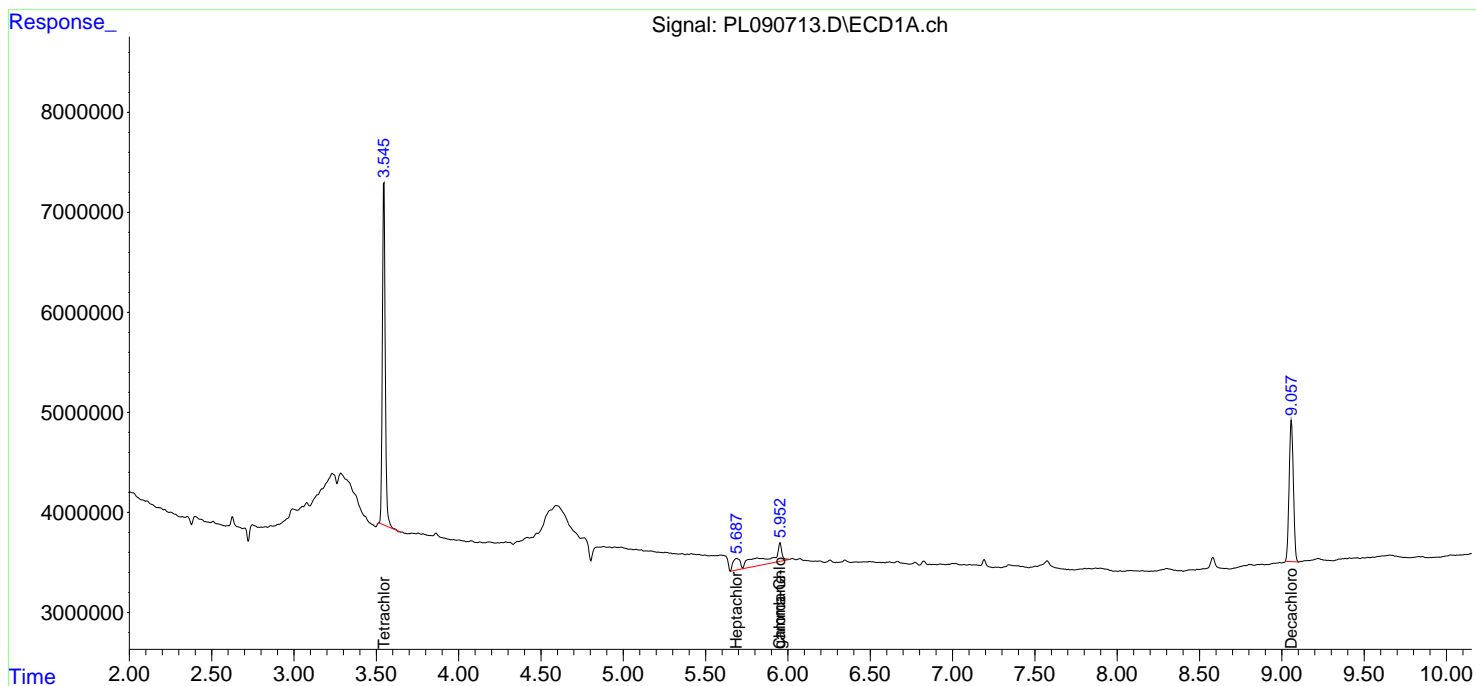
(f)=RT Delta > 1/2 Window (#)=Amounts differ by > 25% (m)=manual int.

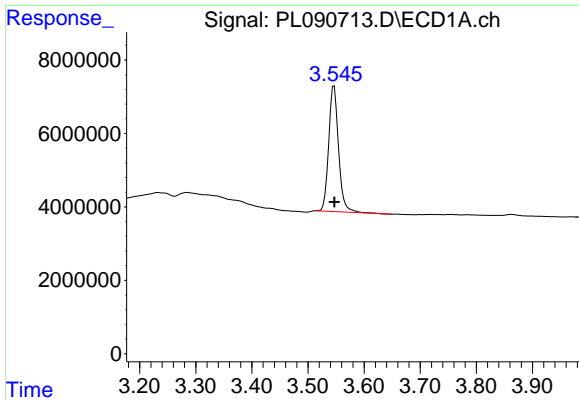
Data Path : Z:\pestpcbsrv\HPCHEM1\ECD_L\Data\PL073124\
 Data File : PL090713.D
 Signal(s) : Signal #1: ECD1A.ch Signal #2: ECD2B.ch
 Acq On : 31 Jul 2024 17:20
 Operator : AR\AJ
 Sample : P3396-04
 Misc :
 ALS Vial : 19 Sample Multiplier: 1

Instrument :
 ECD_L
 ClientSampleId :
 P001-CF02-01

Integration File signal 1: autoint1.e
 Integration File signal 2: autoint2.e
 Quant Time: Aug 01 01:37:17 2024
 Quant Method : Z:\pestpcbsrv\HPCHEM1\ECD_L\methods\PL071524.M
 Quant Title : GC Extractables
 QLast Update : Mon Jul 15 14:16:48 2024
 Response via : Initial Calibration
 Integrator: ChemStation

Volume Inj. : 1 µl
 Signal #1 Phase : ZB-MR2 Signal #2 Phase: ZB-MR1
 Signal #1 Info : 30M x 0.32mm x0.2 Signal #2 Info : 30M x 0.32mm x0.5µm

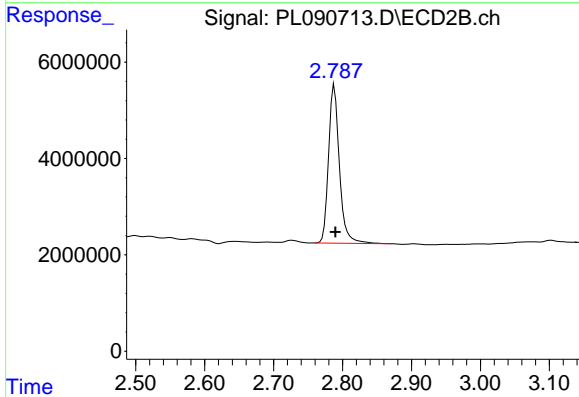




#1 Tetrachloro-m-xylene

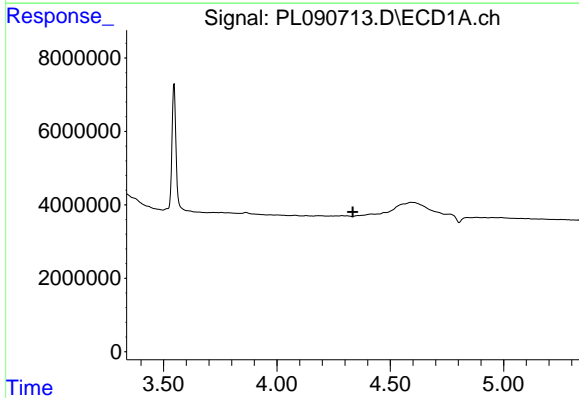
R.T.: 3.546 min
 Delta R.T.: 0.000 min
 Response: 41564645
 Conc: 19.96 ng/ml

Instrument :
 ECD_L
 ClientSampleId :
 P001-CF02-01



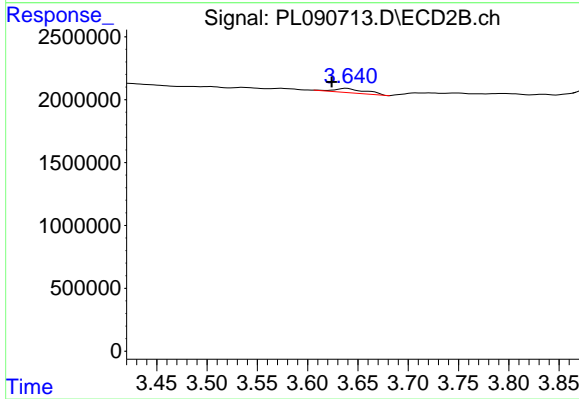
#1 Tetrachloro-m-xylene

R.T.: 2.788 min
 Delta R.T.: -0.002 min
 Response: 35913925
 Conc: 21.34 ng/ml



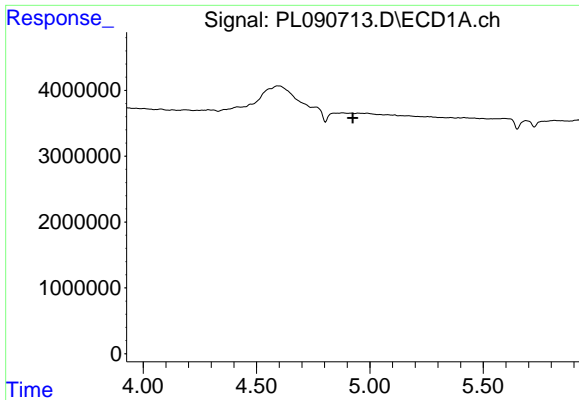
#3 gamma-BHC (Lindane)

R.T.: 0.000 min
 Exp R.T. : 4.335 min
 Response: 0
 Conc: N.D.



#3 gamma-BHC (Lindane)

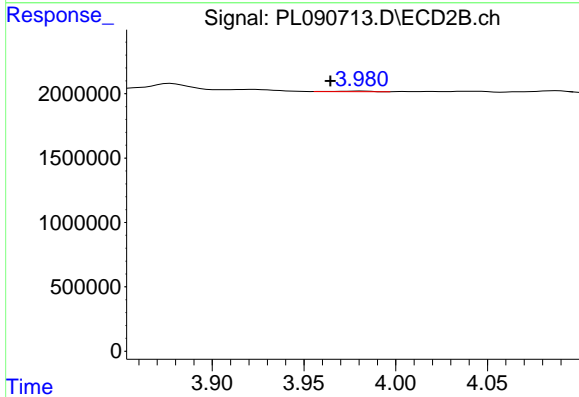
R.T.: 3.639 min
 Delta R.T.: 0.015 min
 Response: 742702
 Conc: 0.32 ng/ml



#4 Heptachlor

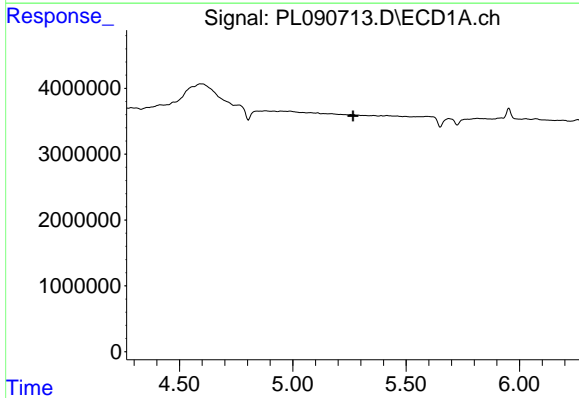
R.T.: 0.000 min
 Exp R.T.: 4.924 min
 Response: 0
 Conc: N.D.

Instrument :
 ECD_L
 ClientSampleId :
 P001-CF02-01



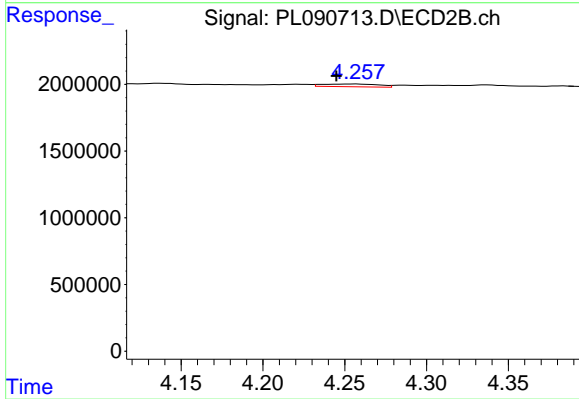
#4 Heptachlor

R.T.: 3.981 min
 Delta R.T.: 0.017 min
 Response: 55790
 Conc: 0.03 ng/ml



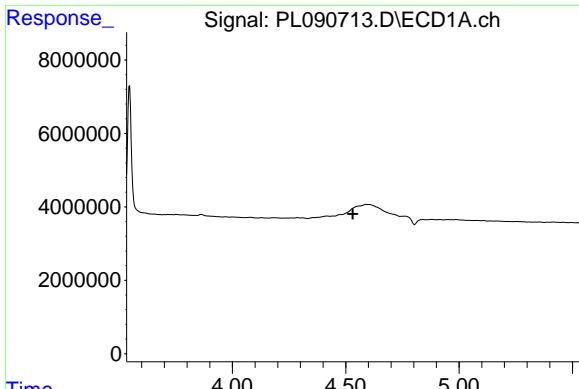
#5 Aldrin

R.T.: 0.000 min
 Exp R.T.: 5.266 min
 Response: 0
 Conc: N.D.



#5 Aldrin

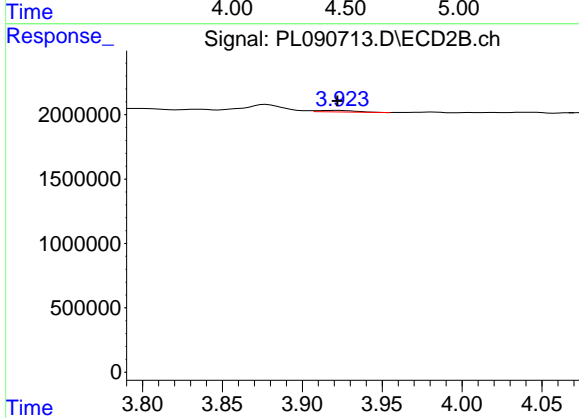
R.T.: 4.257 min
 Delta R.T.: 0.012 min
 Response: 493066
 Conc: 0.23 ng/ml



#6 beta-BHC

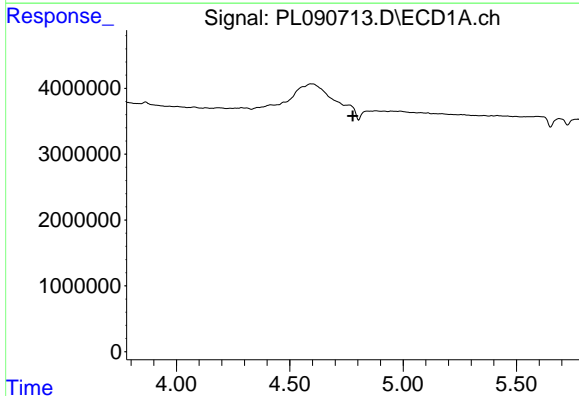
R.T.: 0.000 min
 Exp R.T.: 4.531 min
 Response: 0
 Conc: N.D.

Instrument :
 ECD_L
 ClientSampleId :
 P001-CF02-01



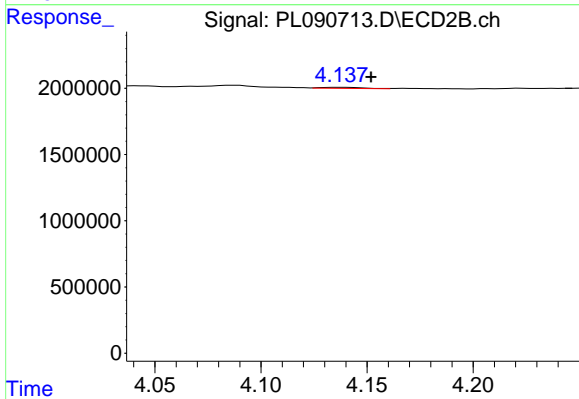
#6 beta-BHC

R.T.: 3.922 min
 Delta R.T.: 0.000 min
 Response: 187496
 Conc: 0.18 ng/ml



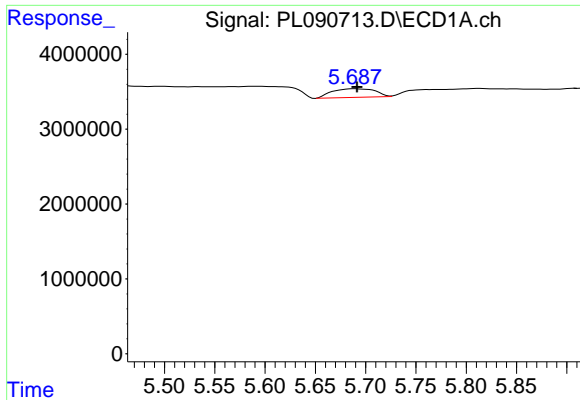
#7 delta-BHC

R.T.: 0.000 min
 Exp R.T.: 4.778 min
 Response: 0
 Conc: N.D.



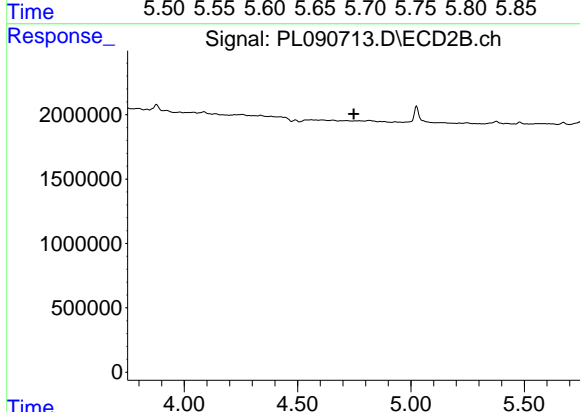
#7 delta-BHC

R.T.: 4.137 min
 Delta R.T.: -0.015 min
 Response: 113332
 Conc: 0.05 ng/ml

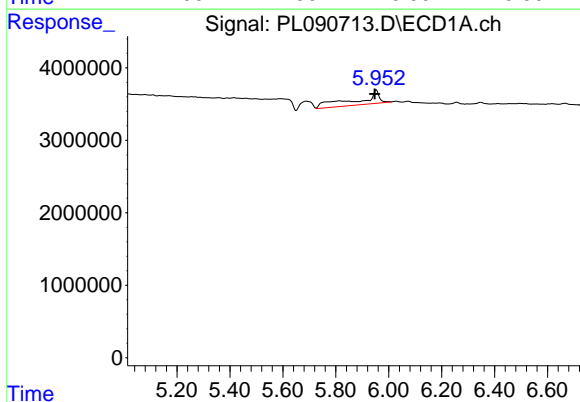


#8 Heptachlor epoxide
 R.T.: 5.689 min
 Delta R.T.: -0.002 min
 Response: 3432905
 Conc: 1.46 ng/ml

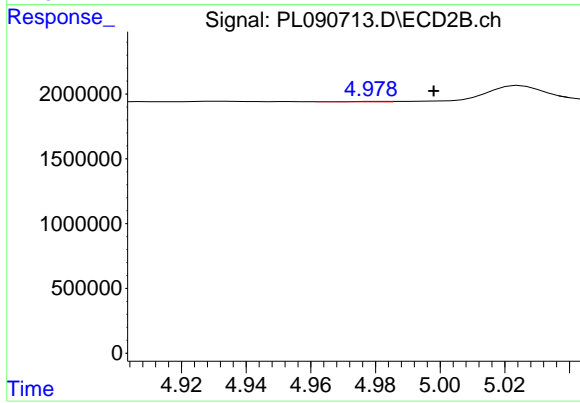
Instrument : ECD_L
 ClientSampleId : P001-CF02-01



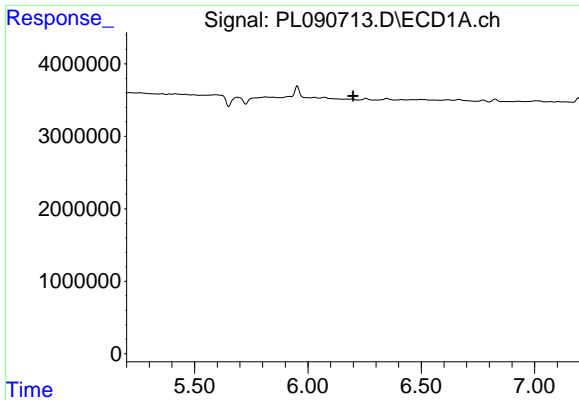
#10 Heptachlor epoxide
 R.T.: 4.755 min
 Delta R.T.: 0.007 min
 Response: -4709
 Conc: N.D.



#10 gamma-Chlordane
 R.T.: 5.953 min
 Delta R.T.: 0.006 min
 Response: 10532629
 Conc: 4.53 ng/ml



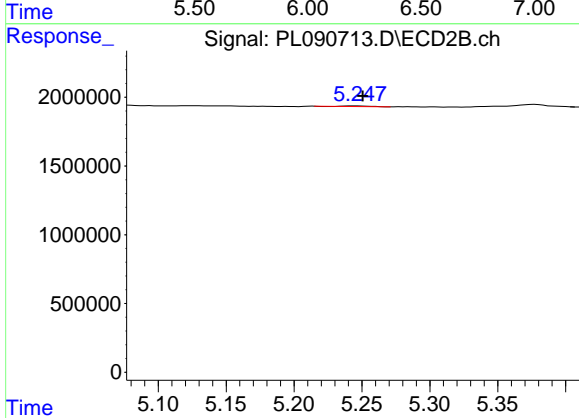
#10 gamma-Chlordane
 R.T.: 4.979 min
 Delta R.T.: -0.019 min
 Response: 24048
 Conc: 0.01 ng/ml



#12 4,4'-DDE

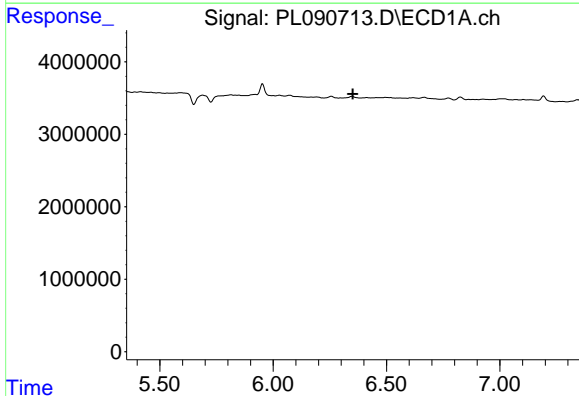
R.T.: 0.000 min
 Exp R.T.: 6.199 min
 Response: 0
 Conc: N.D.

Instrument :
 ECD_L
 ClientSampleId :
 P001-CF02-01



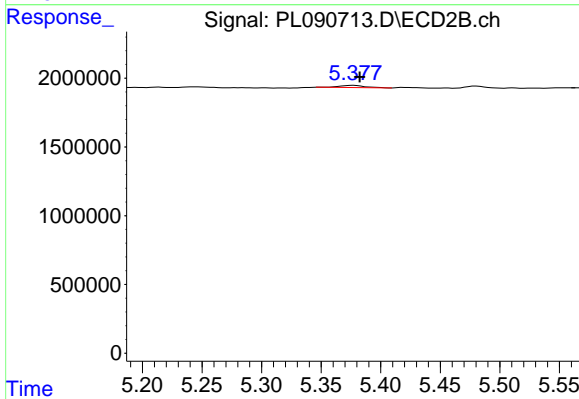
#12 4,4'-DDE

R.T.: 5.248 min
 Delta R.T.: -0.003 min
 Response: 67190
 Conc: 0.04 ng/ml



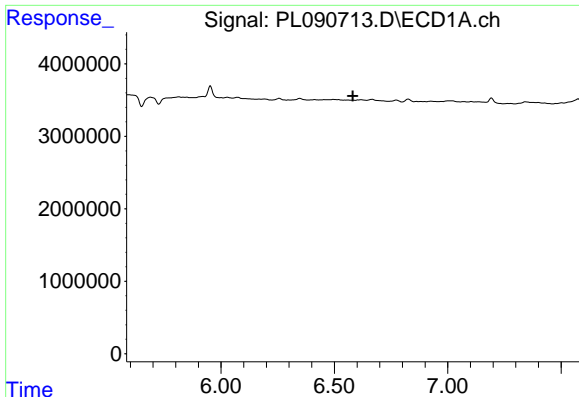
#13 Dieldrin

R.T.: 0.000 min
 Exp R.T.: 6.352 min
 Response: 0
 Conc: N.D.



#13 Dieldrin

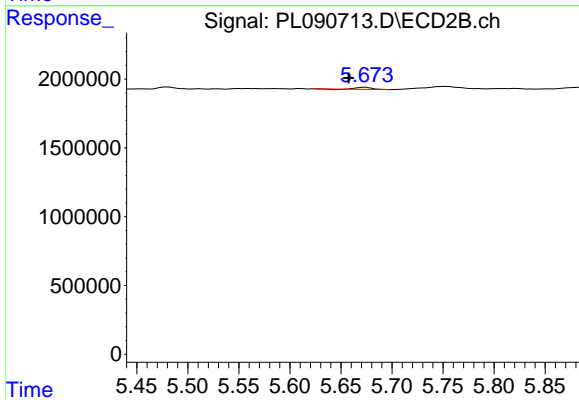
R.T.: 5.378 min
 Delta R.T.: -0.005 min
 Response: 244741
 Conc: 0.12 ng/ml



#14 Endrin

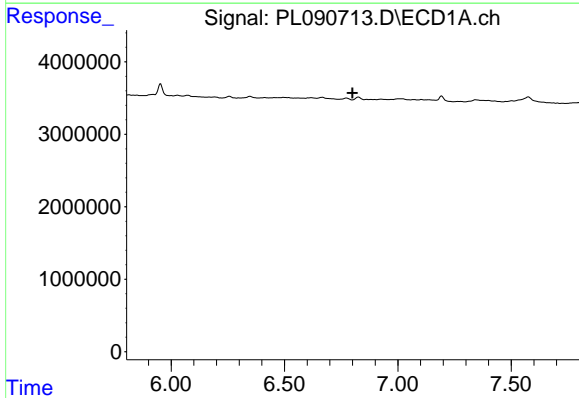
R.T.: 0.000 min
 Exp R.T. : 6.582 min
 Response: 0
 Conc: N.D.

Instrument :
 ECD_L
 ClientSampleId :
 P001-CF02-01



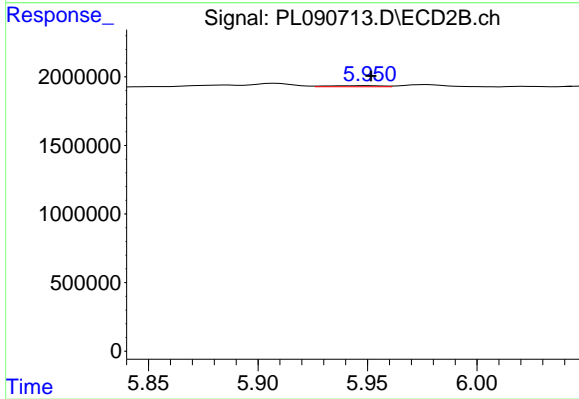
#14 Endrin

R.T.: 5.674 min
 Delta R.T.: 0.016 min
 Response: 147285
 Conc: 0.09 ng/ml



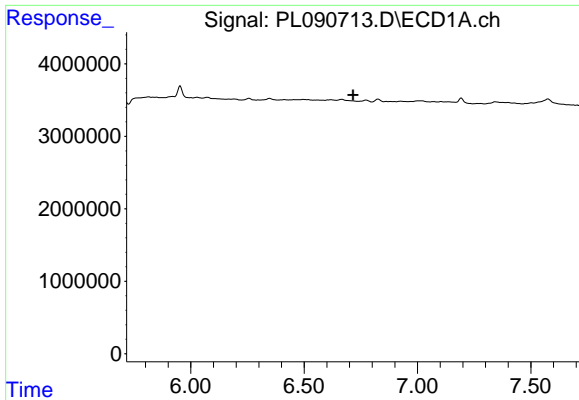
#15 Endosulfan II

R.T.: 0.000 min
 Exp R.T. : 6.800 min
 Response: 0
 Conc: N.D.



#15 Endosulfan II

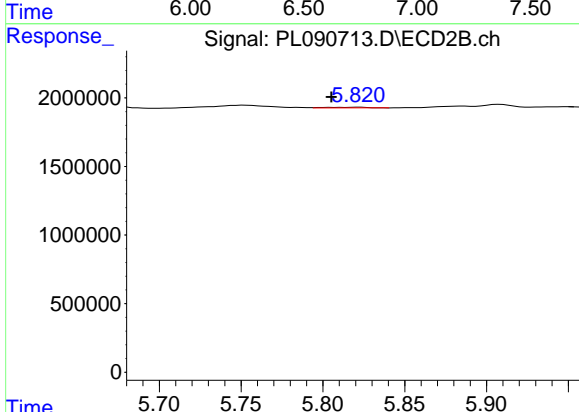
R.T.: 5.951 min
 Delta R.T.: 0.000 min
 Response: 140574
 Conc: 0.08 ng/ml



#16 4,4'-DDD

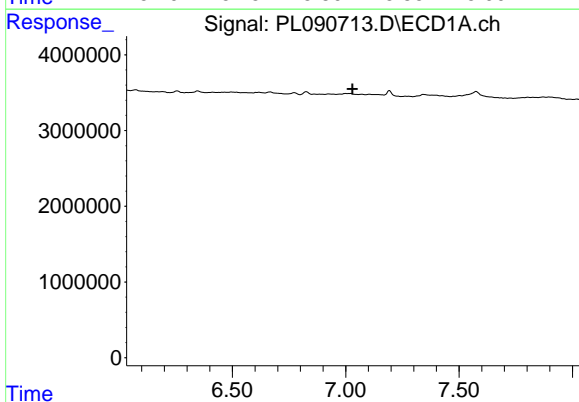
R.T.: 0.000 min
 Exp R.T.: 6.716 min
 Response: 0
 Conc: N.D.

Instrument :
 ECD_L
 ClientSampleId :
 P001-CF02-01



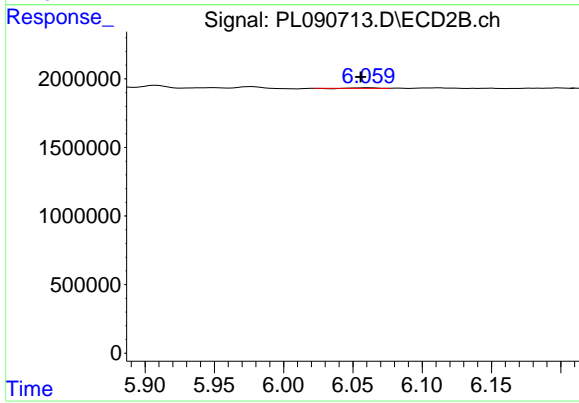
#16 4,4'-DDD

R.T.: 5.822 min
 Delta R.T.: 0.016 min
 Response: 90495
 Conc: 0.06 ng/ml



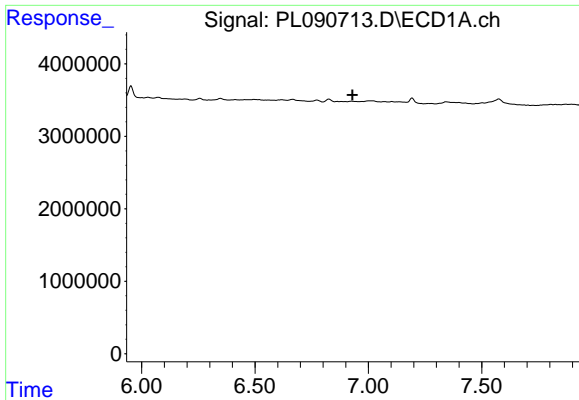
#17 4,4'-DDT

R.T.: 0.000 min
 Exp R.T.: 7.030 min
 Response: 0
 Conc: N.D.



#17 4,4'-DDT

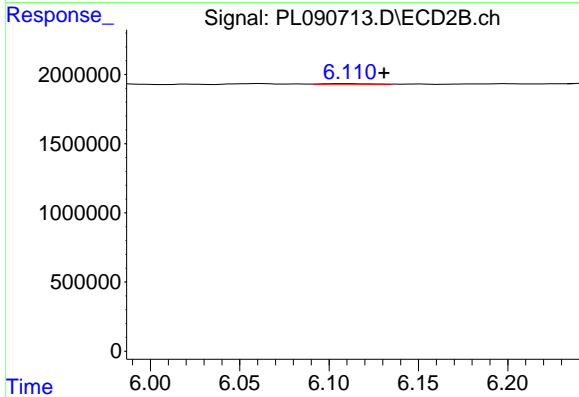
R.T.: 6.061 min
 Delta R.T.: 0.005 min
 Response: 32545
 Conc: 0.02 ng/ml



#18 Endrin aldehyde

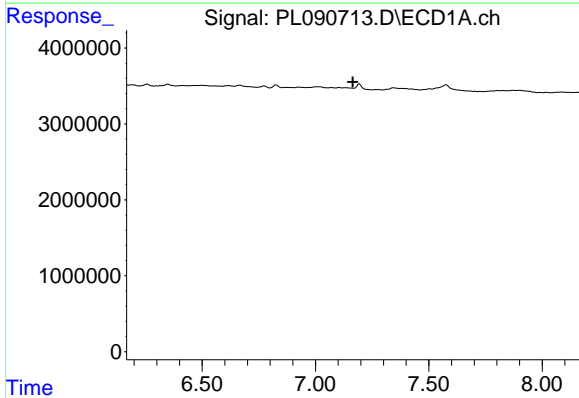
R.T.: 0.000 min
 Exp R.T.: 6.930 min
 Response: 0
 Conc: N.D.

Instrument :
 ECD_L
 ClientSampleId :
 P001-CF02-01



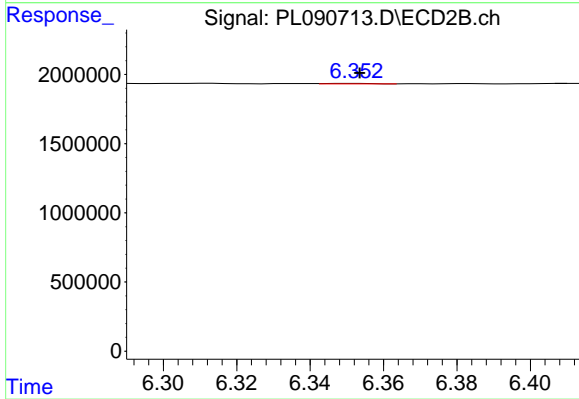
#18 Endrin aldehyde

R.T.: 6.111 min
 Delta R.T.: -0.019 min
 Response: 64011
 Conc: 0.05 ng/ml



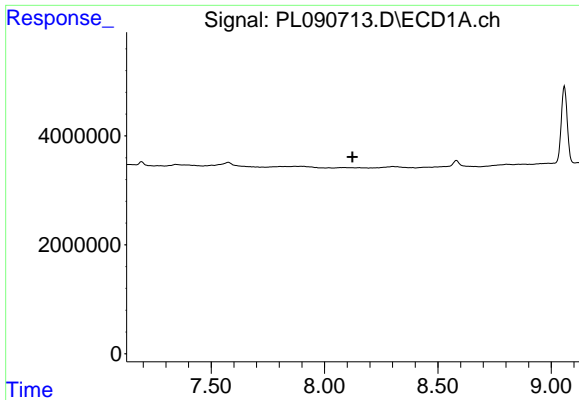
#19 Endosulfan Sulfate

R.T.: 0.000 min
 Exp R.T.: 7.164 min
 Response: 0
 Conc: N.D.



#19 Endosulfan Sulfate

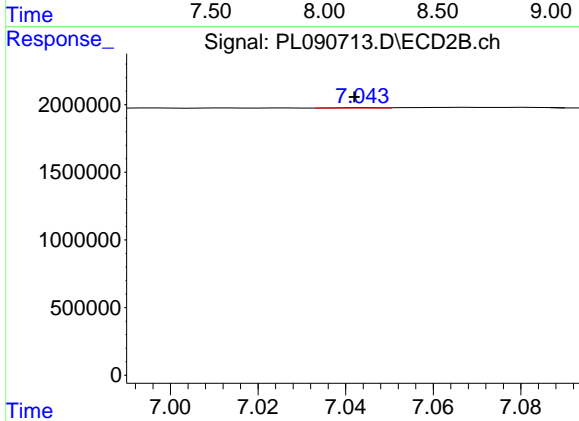
R.T.: 6.353 min
 Delta R.T.: 0.000 min
 Response: 28960
 Conc: 0.02 ng/ml



#22 Mirex

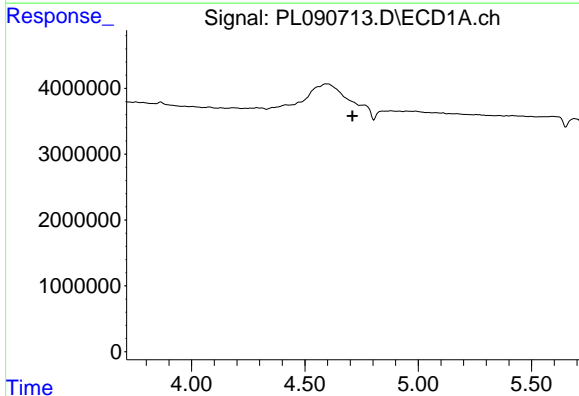
R.T.: 0.000 min
 Exp R.T.: 8.123 min
 Response: 0
 Conc: N.D.

Instrument :
 ECD_L
 ClientSampleId :
 P001-CF02-01



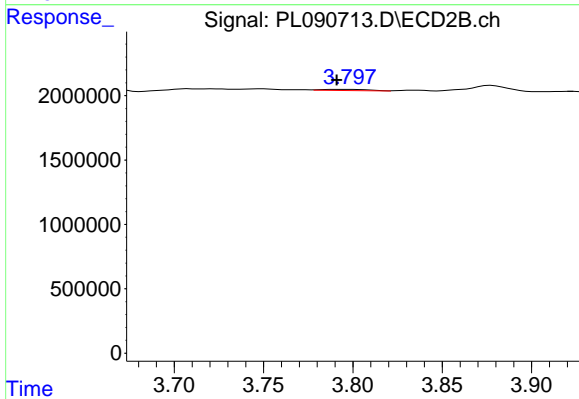
#22 Mirex

R.T.: 7.044 min
 Delta R.T.: 0.002 min
 Response: 22079
 Conc: 0.01 ng/ml



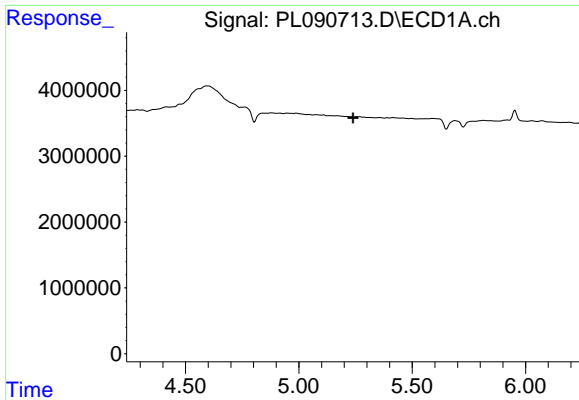
#23 Chlordane-1

R.T.: 0.000 min
 Exp R.T.: 4.710 min
 Response: 0
 Conc: N.D.



#23 Chlordane-1

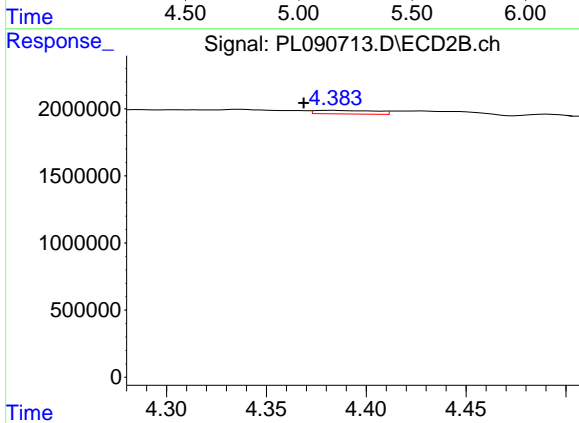
R.T.: 3.796 min
 Delta R.T.: 0.005 min
 Response: 152165
 Conc: 2.46 ng/ml



#24 Chlordane-2

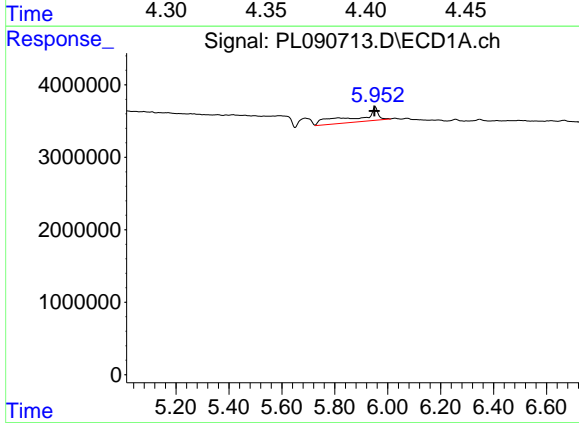
R.T.: 0.000 min
 Exp R.T.: 5.240 min
 Response: 0
 Conc: N.D.

Instrument :
 ECD_L
 ClientSampleId :
 P001-CF02-01



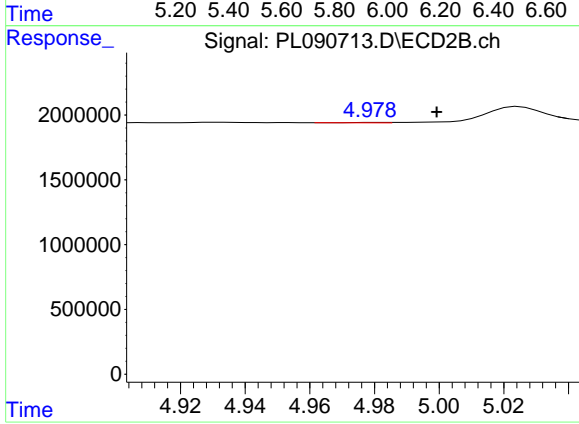
#24 Chlordane-2

R.T.: 4.384 min
 Delta R.T.: 0.015 min
 Response: 569157
 Conc: 7.50 ng/ml



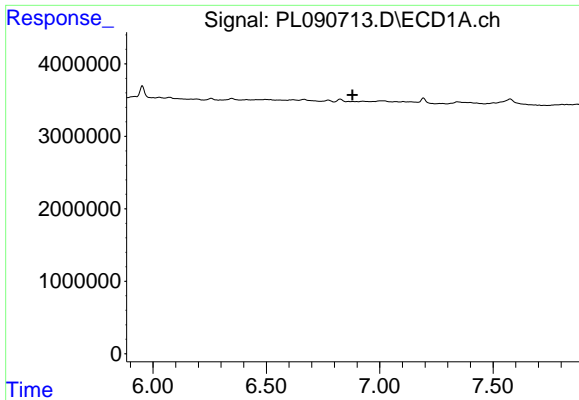
#25 Chlordane-3

R.T.: 5.953 min
 Delta R.T.: 0.003 min
 Response: 10532629
 Conc: 31.82 ng/ml



#25 Chlordane-3

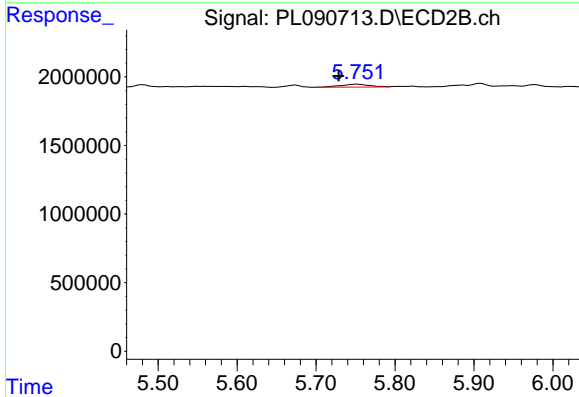
R.T.: 4.979 min
 Delta R.T.: -0.020 min
 Response: 24048
 Conc: 0.12 ng/ml



#27 Chlordane-5

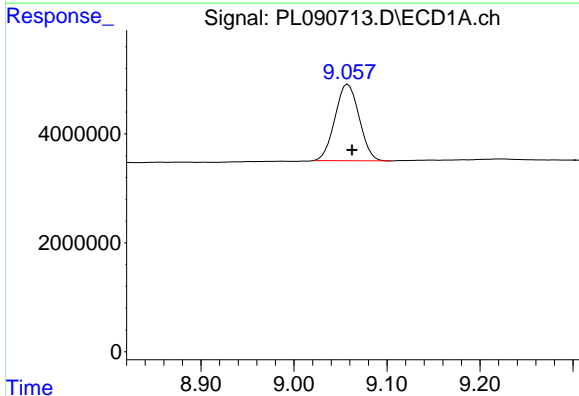
R.T.: 0.000 min
 Exp R.T.: 6.880 min
 Response: 0
 Conc: N.D.

Instrument :
 ECD_L
 ClientSampleId :
 P001-CF02-01



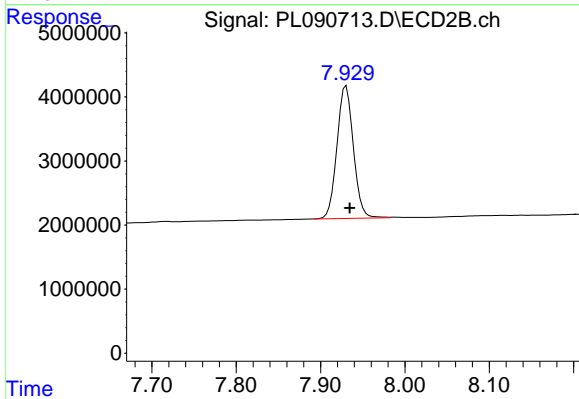
#27 Chlordane-5

R.T.: 5.752 min
 Delta R.T.: 0.024 min
 Response: 571626
 Conc: 9.48 ng/ml



#28 Decachlorobiphenyl

R.T.: 9.058 min
 Delta R.T.: -0.005 min
 Response: 25324647
 Conc: 19.06 ng/ml



#28 Decachlorobiphenyl

R.T.: 7.930 min
 Delta R.T.: -0.004 min
 Response: 28013533
 Conc: 19.21 ng/ml