

Data Path : Z:\pestpcbsrv\HPCHEM1\ECD_L\Data\PL073124\
 Data File : PL090697.D
 Signal(s) : Signal #1: ECD1A.ch Signal #2: ECD2B.ch
 Acq On : 31 Jul 2024 12:34
 Operator : AR\AJ
 Sample : P3372-01
 Misc :
 ALS Vial : 7 Sample Multiplier: 1

Instrument :
 ECD_L
ClientSampleId :
 OR-03-07252024

Manual Integrations
APPROVED
 Reviewed By :Abdul Mirza 08/01/2024
 Supervised By :Ankita Jodhani 08/01/2024

Integration File signal 1: autoint1.e
 Integration File signal 2: autoint2.e
 Quant Time: Jul 31 13:30:11 2024
 Quant Method : Z:\pestpcbsrv\HPCHEM1\ECD_L\methods\PL071524.M
 Quant Title : GC Extractables
 QLast Update : Mon Jul 15 14:16:48 2024
 Response via : Initial Calibration
 Integrator: ChemStation

Volume Inj. : 1 µl
 Signal #1 Phase : ZB-MR2 Signal #2 Phase: ZB-MR1
 Signal #1 Info : 30M x 0.32mm x0.2 Signal #2 Info : 30M x 0.32mm x0.5µm

Compound	RT#1	RT#2	Resp#1	Resp#2	ng/ml	ng/ml

System Monitoring Compounds						
1) SA Tetrachlo...	3.546	2.789	23669738	19771021	11.368m	11.748
28) SA Decachlor...	9.062	7.932	18273499	18563951	13.751	12.732
Target Compounds						
10) B gamma-Chl...	5.945	4.995	1894794	864808	0.815m	0.427m#
11) B alpha-Chl...	6.026	5.058	3995390	1309355	1.740m	0.648m#
14) MA Endrin	6.578	5.664	1059716	1052828	0.576m	0.612m

(f)=RT Delta > 1/2 Window (#)=Amounts differ by > 25% (m)=manual int.

Data Path : Z:\pestpcbsrv\HPCHEM1\ECD_L\Data\PL073124\
 Data File : PL090697.D
 Signal(s) : Signal #1: ECD1A.ch Signal #2: ECD2B.ch
 Acq On : 31 Jul 2024 12:34
 Operator : AR\AJ
 Sample : P3372-01
 Misc :
 ALS Vial : 7 Sample Multiplier: 1

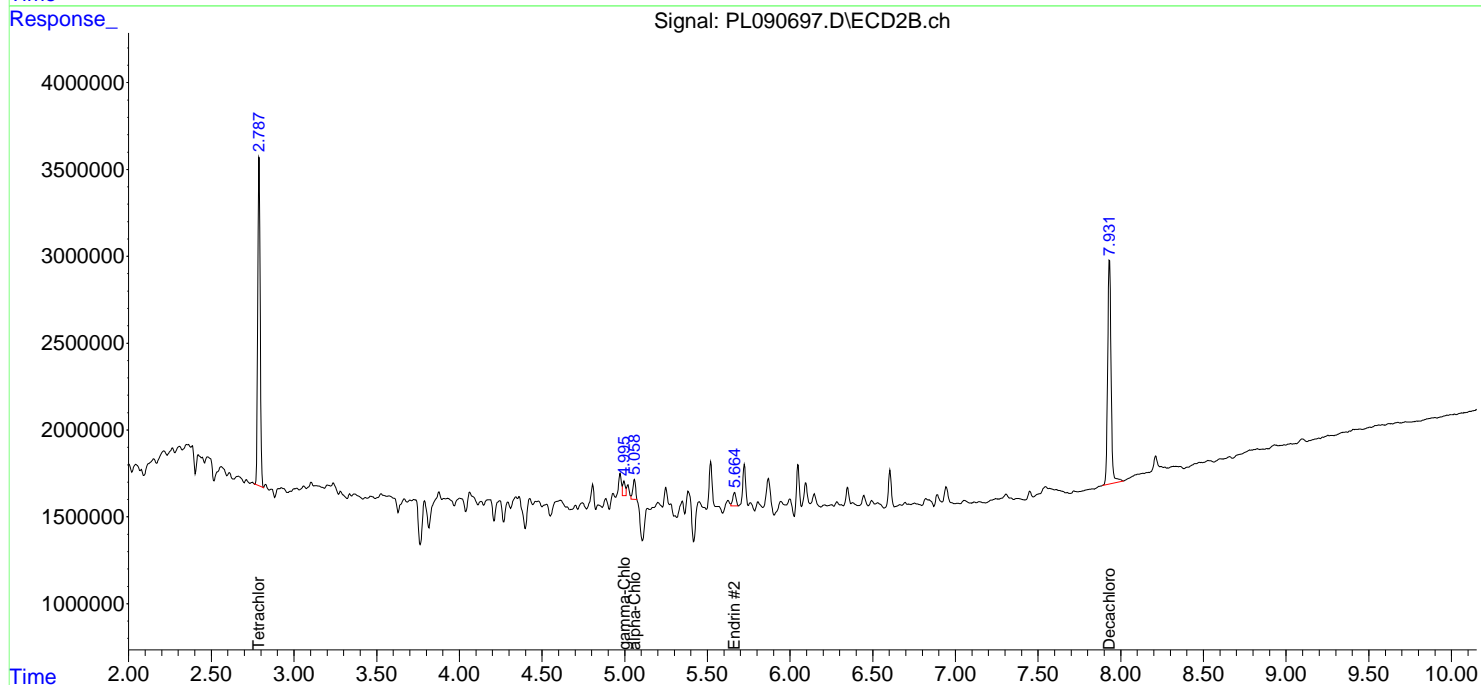
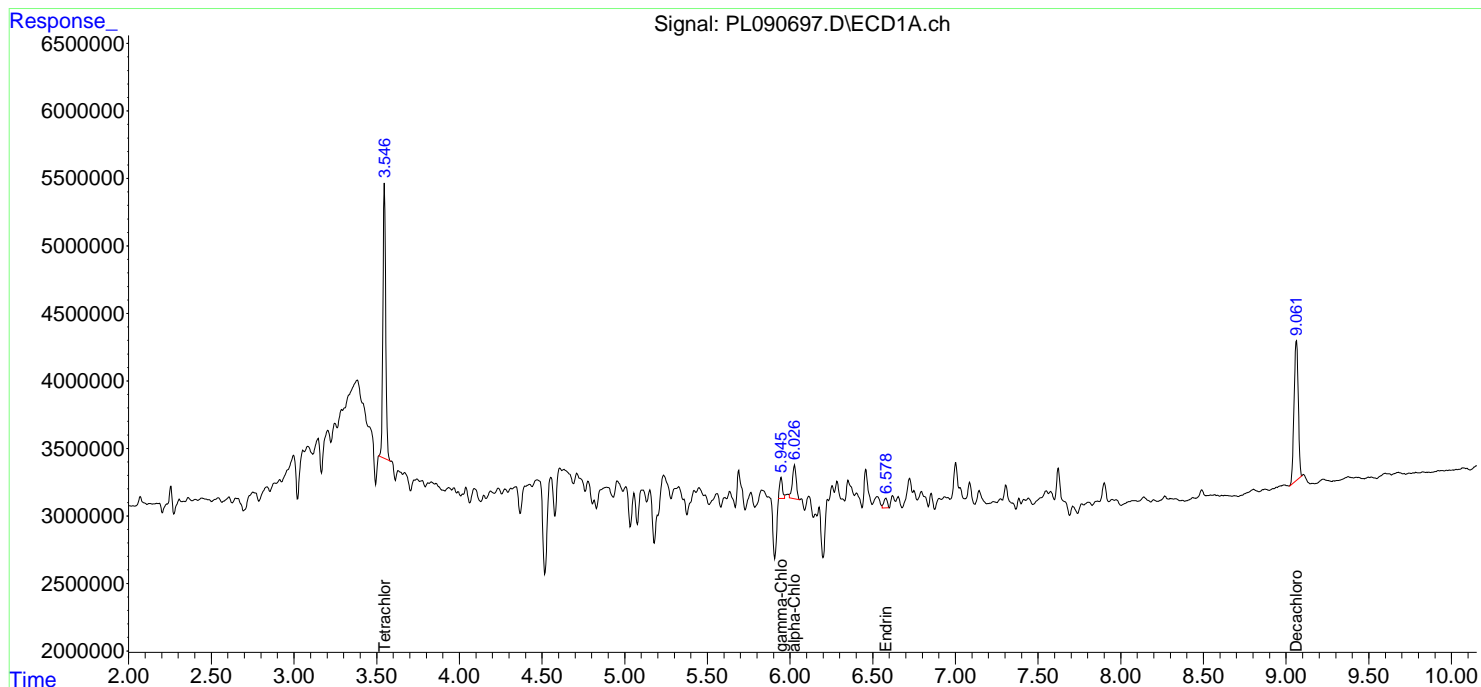
Instrument :
 ECD_L
 ClientSampleId :
 OR-03-07252024

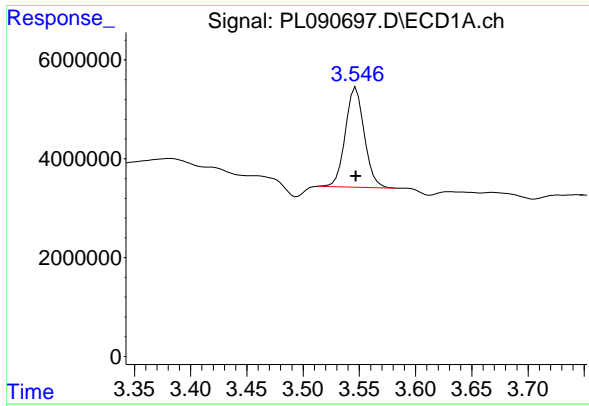
Manual Integrations
 APPROVED

Reviewed By :Abdul Mirza 08/01/2024
 Supervised By :Ankita Jodhani 08/01/2024

Integration File signal 1: autoint1.e
 Integration File signal 2: autoint2.e
 Quant Time: Jul 31 13:30:11 2024
 Quant Method : Z:\pestpcbsrv\HPCHEM1\ECD_L\methods\PL071524.M
 Quant Title : GC Extractables
 QLast Update : Mon Jul 15 14:16:48 2024
 Response via : Initial Calibration
 Integrator: ChemStation

Volume Inj. : 1 µl
 Signal #1 Phase : ZB-MR2 Signal #2 Phase: ZB-MR1
 Signal #1 Info : 30M x 0.32mm x0.2 Signal #2 Info : 30M x 0.32mm x0.5µm





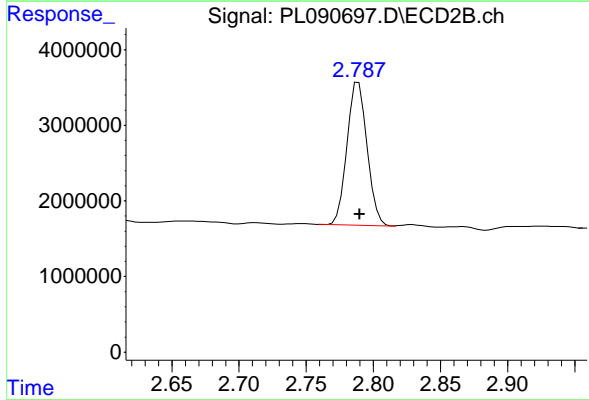
#1 Tetrachloro-m-xylene

R.T.: 3.546 min
 Delta R.T.: -0.001 min
 Response: 23669738
 Conc: 11.37 ng/ml

Instrument : ECD_L
 Client Sample Id : OR-03-07252024

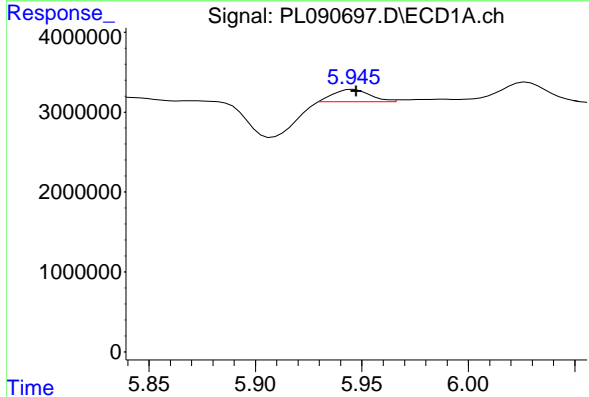
Manual Integrations
 APPROVED

Reviewed By :Abdul Mirza 08/01/2024
 Supervised By :Ankita Jodhani 08/01/2024



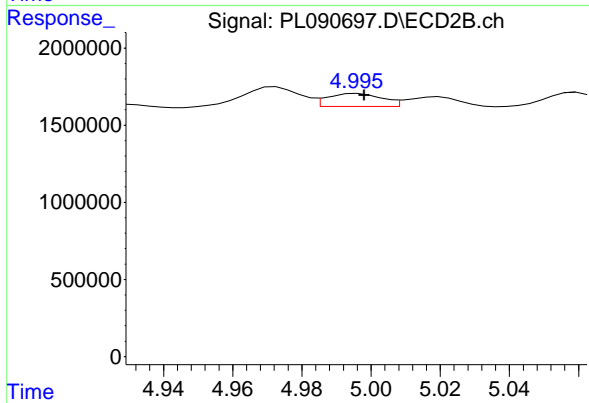
#1 Tetrachloro-m-xylene

R.T.: 2.789 min
 Delta R.T.: 0.000 min
 Response: 19771021
 Conc: 11.75 ng/ml



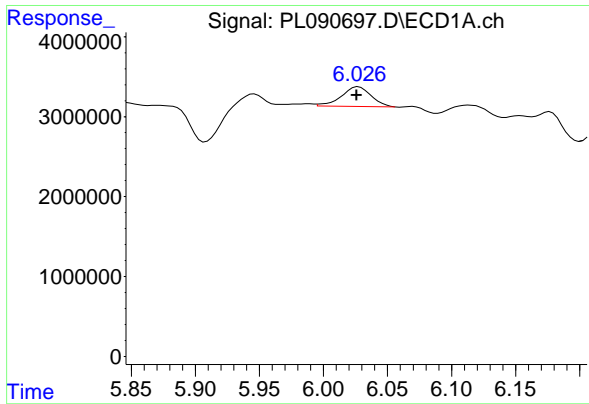
#10 gamma-Chlordane

R.T.: 5.945 min
 Delta R.T.: -0.002 min
 Response: 1894794
 Conc: 0.81 ng/ml m



#10 gamma-Chlordane

R.T.: 4.995 min
 Delta R.T.: -0.003 min
 Response: 864808
 Conc: 0.43 ng/ml m



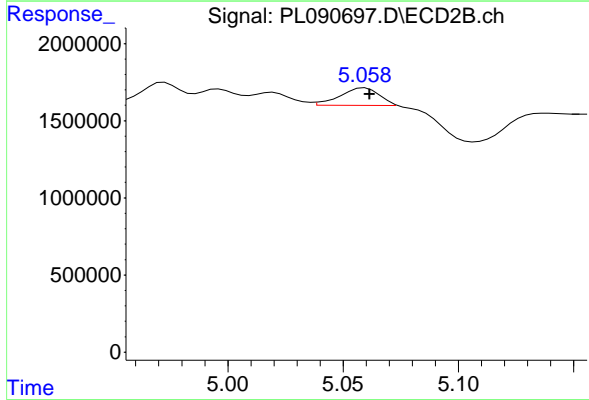
#11 alpha-Chlordane

R.T.: 6.026 min
 Delta R.T.: 0.000 min
 Response: 3995390
 Conc: 1.74 ng/ml

Instrument : ECD_L
 Client Sample Id : OR-03-07252024

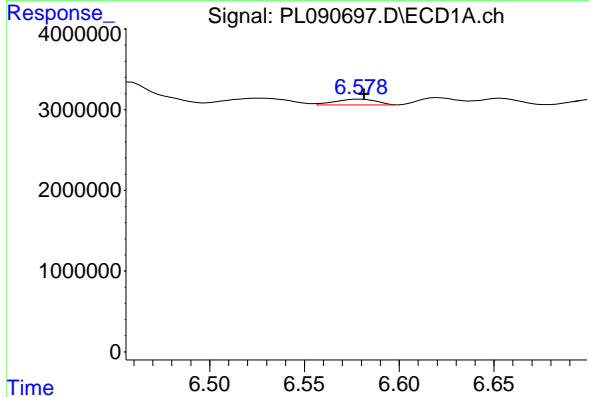
Manual Integrations
 APPROVED

Reviewed By :Abdul Mirza 08/01/2024
 Supervised By :Ankita Jodhani 08/01/2024



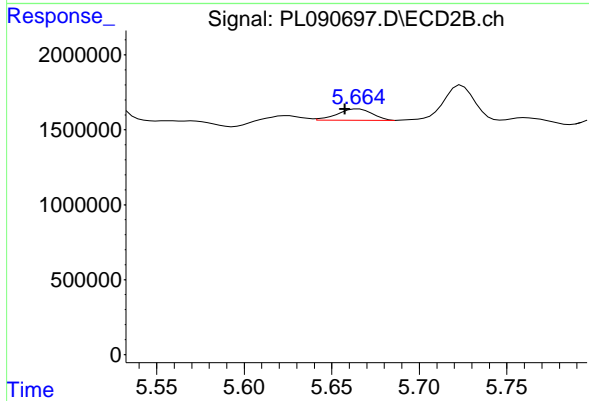
#11 alpha-Chlordane

R.T.: 5.058 min
 Delta R.T.: -0.003 min
 Response: 1309355
 Conc: 0.65 ng/ml m



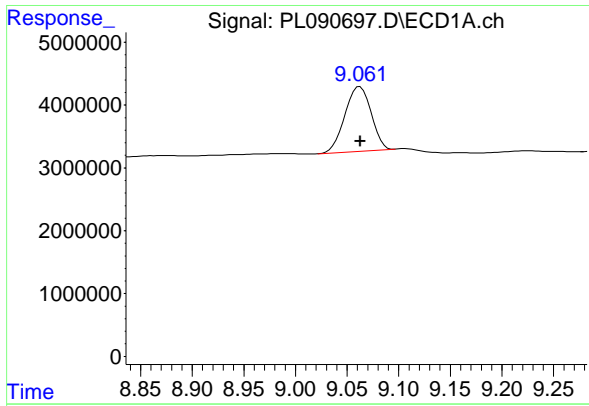
#14 Endrin

R.T.: 6.578 min
 Delta R.T.: -0.003 min
 Response: 1059716
 Conc: 0.58 ng/ml m



#14 Endrin

R.T.: 5.664 min
 Delta R.T.: 0.006 min
 Response: 1052828
 Conc: 0.61 ng/ml m



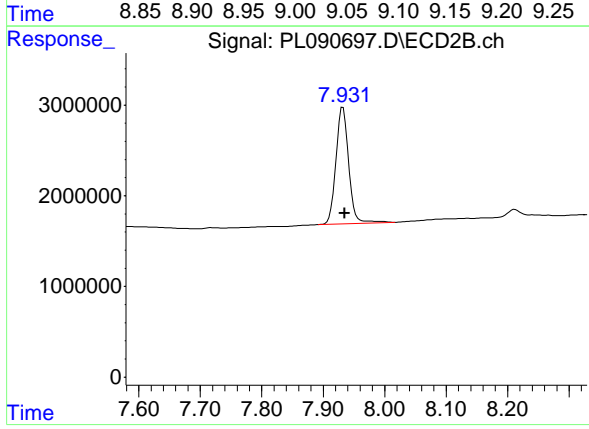
#28 Decachlorobiphenyl

R.T.: 9.062 min
 Delta R.T.: 0.000 min
 Response: 18273499
 Conc: 13.75 ng/ml

Instrument :
 ECD_L
 Client Sample Id :
 OR-03-07252024

Manual Integrations
 APPROVED

Reviewed By :Abdul Mirza 08/01/2024
 Supervised By :Ankita Jodhani 08/01/2024



#28 Decachlorobiphenyl

R.T.: 7.932 min
 Delta R.T.: -0.003 min
 Response: 18563951
 Conc: 12.73 ng/ml