

Data Path : Z:\pestpcbsrv\HPCHEM1\ECD\_L\Data\PL073125\  
 Data File : PL096670.D  
 Signal(s) : Signal #1: ECD1A.ch Signal #2: ECD2B.ch  
 Acq On : 31 Jul 2025 15:30  
 Operator : AR\AJ  
 Sample : Q2646-03  
 Misc :  
 ALS Vial : 19 Sample Multiplier: 1

Instrument :  
 ECD\_L  
 ClientSampleId :  
 FRAC TANKRE

Integration File signal 1: autoint1.e  
 Integration File signal 2: autoint2.e  
 Quant Time: Aug 01 02:49:48 2025  
 Quant Method : Z:\pestpcbsrv\HPCHEM1\ECD\_L\methods\PL072825.M  
 Quant Title : GC Extractables  
 QLast Update : Tue Jul 29 08:58:13 2025  
 Response via : Initial Calibration  
 Integrator: ChemStation

Volume Inj. : 1 µl  
 Signal #1 Phase : ZB-MR2 Signal #2 Phase: ZB-MR2  
 Signal #1 Info : 30M x 0.32mm x0.5 Signal #2 Info : 30M x 0.32mm x0.25µm

Compound	RT#1	RT#2	Resp#1	Resp#2	ng/ml	ng/ml
-----						
System Monitoring Compounds						
1) SA Tetrachlo...	3.536	2.828	-3919428	69281862	N.D.	14.501
28) SA Decachlor...	9.015	7.992	21775871	52028840	9.132	11.993 #
Target Compounds						
2) A alpha-BHC	3.967f	3.328	22816030	14402868	4.932	2.035 #
3) MA gamma-BHC...	4.326f	0.000	3317594	0	0.750	N.D. #
4) MA Heptachlor	4.915	0.000	102.6E6	0	24.683	N.D. #
5) MB Aldrin	5.262f	4.307	36695949	-14263964	8.532	N.D. #
6) B beta-BHC	4.523f	3.940f	5273323	5555729	2.922	1.969 #
7) B delta-BHC	0.000	4.218f	0	20509726	N.D.	3.168 #
8) B Heptachlo...	5.638f	0.000	35755638	0	9.271	N.D. #
9) A Endosulfan I	6.051	5.198f	72161067	10565942	20.065	1.910 #
11) B alpha-Chl...	6.011	5.138f	141.2E6	9199484	36.627	1.560 #
12) B 4,4'-DDE	6.147f	0.000	36672109	0	11.420	N.D. #
13) MA Dieldrin	6.298f	0.000	12215722	0	3.292	N.D. #
14) MA Endrin	6.544	0.000	8565535	0	2.830	N.D. #
15) B Endosulfa...	6.745	0.000	10399116	0	3.247	N.D. #
16) A 4,4'-DDD	6.666	0.000	34483087	0	13.638	N.D. #
17) MA 4,4'-DDT	7.006f	0.000	6402981	0	2.233	N.D. #
18) B Endrin al...	6.890	6.171	11248251	23894685	5.242	3.360 #
20) A Methoxychlor	7.437f	0.000	11816591	0	8.048	N.D. #
23) Chlordane-1	4.691	3.833	12512051	79395841	73.551	378.729 #
24) Chlordane-2	5.197	4.428	69310474	34892118	396.044	143.831 #
26) Chlordane-4	6.011	5.138f	141.2E6	9199484	170.575	14.782 #
27) Chlordane-5	0.000	6.039f	0	39526007	N.D.	154.936 #

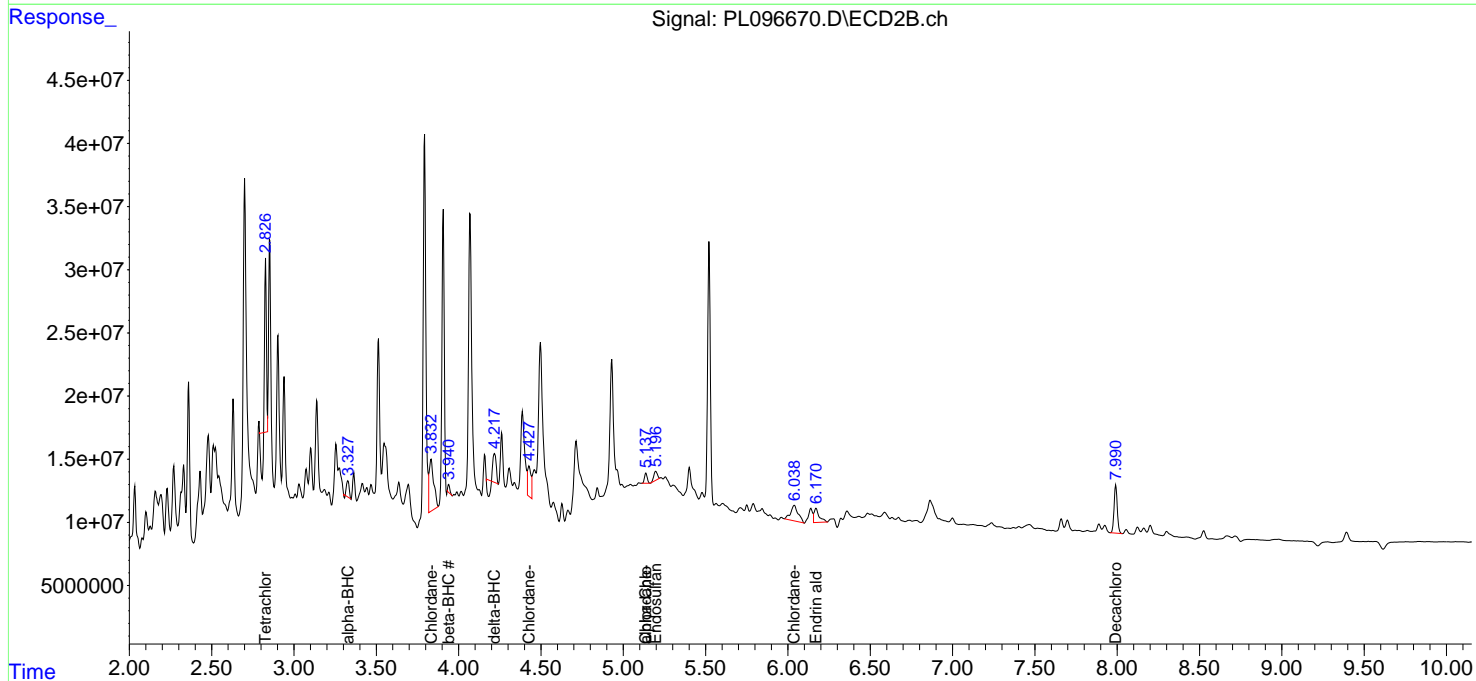
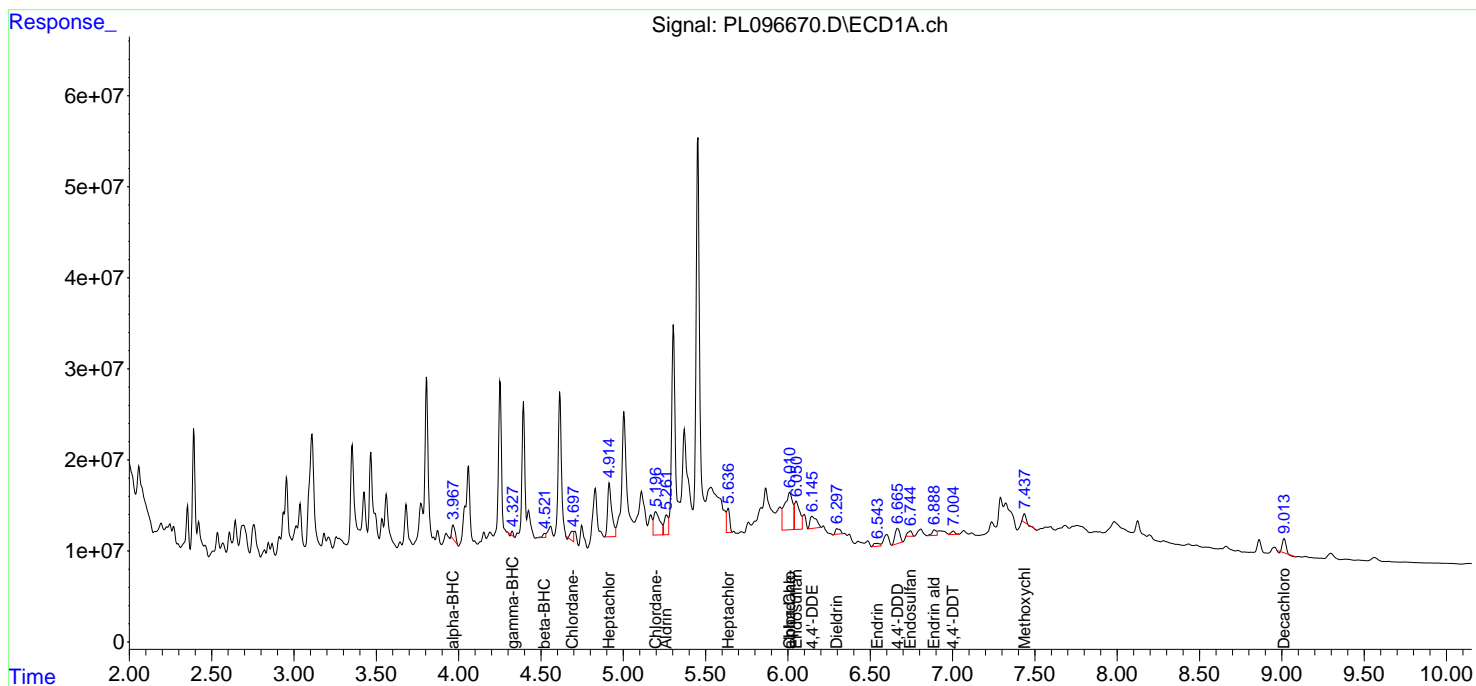
(f)=RT Delta > 1/2 Window (#)=Amounts differ by > 25% (m)=manual int.

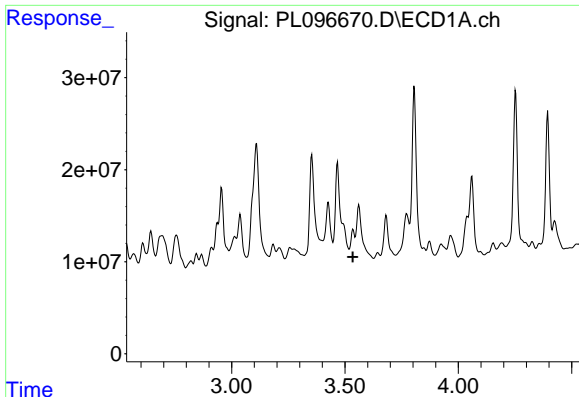
Data Path : Z:\pestpcbsrv\HPCHEM1\ECD\_L\Data\PL073125\  
 Data File : PL096670.D  
 Signal(s) : Signal #1: ECD1A.ch Signal #2: ECD2B.ch  
 Acq On : 31 Jul 2025 15:30  
 Operator : AR\AJ  
 Sample : Q2646-03  
 Misc :  
 ALS Vial : 19 Sample Multiplier: 1

Instrument :  
 ECD\_L  
 ClientSampleId :  
 FRAC TANKRE

Integration File signal 1: autoint1.e  
 Integration File signal 2: autoint2.e  
 Quant Time: Aug 01 02:49:48 2025  
 Quant Method : Z:\pestpcbsrv\HPCHEM1\ECD\_L\methods\PL072825.M  
 Quant Title : GC Extractables  
 QLast Update : Tue Jul 29 08:58:13 2025  
 Response via : Initial Calibration  
 Integrator: ChemStation

Volume Inj. : 1 µl  
 Signal #1 Phase : ZB-MR1 Signal #2 Phase: ZB-MR2  
 Signal #1 Info : 30M x 0.32mm x0.5 Signal #2 Info : 30M x 0.32mm x0.25µm

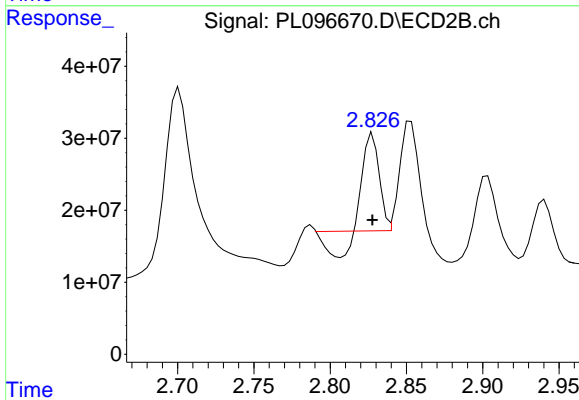




#1 Tetrachloro-m-xylene

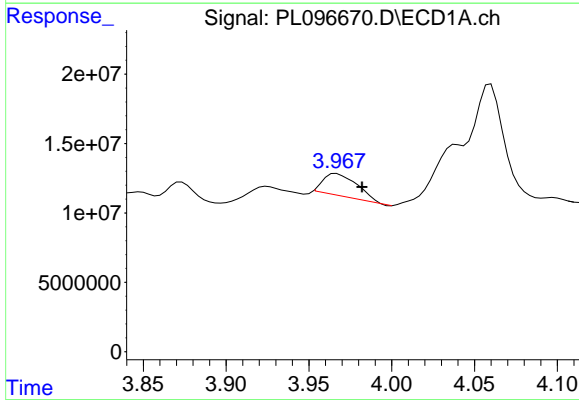
R.T.: 3.536 min  
 Delta R.T.: 0.000 min  
 Response: -3919428  
 Conc: N.D.

Instrument :  
 ECD\_L  
 ClientSampleId :  
 FRAC TANKRE



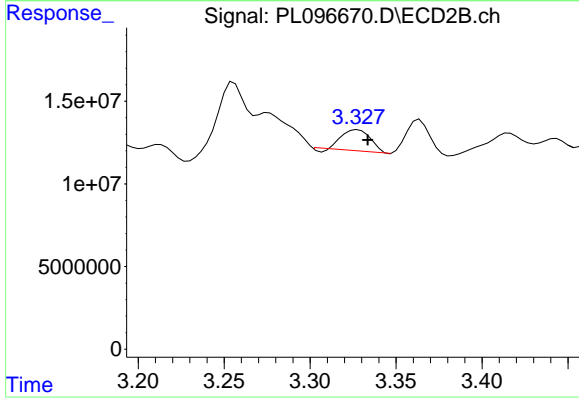
#1 Tetrachloro-m-xylene

R.T.: 2.828 min  
 Delta R.T.: 0.000 min  
 Response: 69281862  
 Conc: 14.50 ng/ml



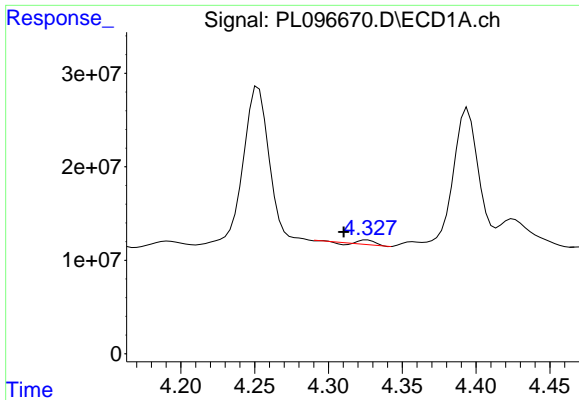
#2 alpha-BHC

R.T.: 3.967 min  
 Delta R.T.: -0.015 min  
 Response: 22816030  
 Conc: 4.93 ng/ml



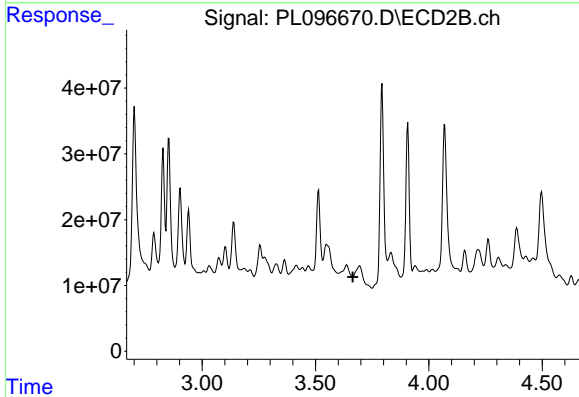
#2 alpha-BHC

R.T.: 3.328 min  
 Delta R.T.: -0.006 min  
 Response: 14402868  
 Conc: 2.04 ng/ml

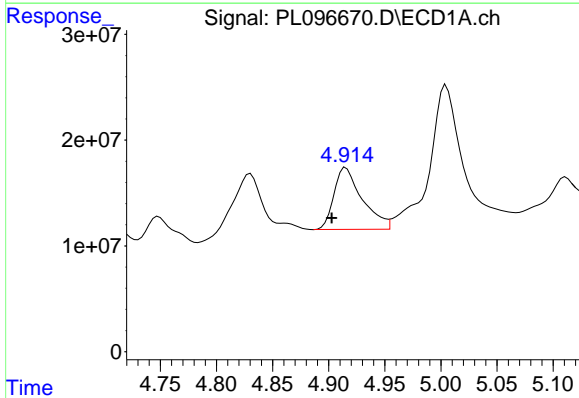


#3 gamma-BHC (Lindane)  
 R.T.: 4.326 min  
 Delta R.T.: 0.016 min  
 Response: 3317594  
 Conc: 0.75 ng/ml

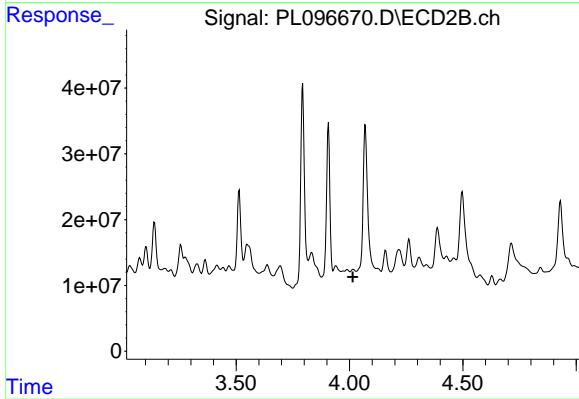
Instrument :  
 ECD\_L  
 ClientSampleId :  
 FRAC TANKRE



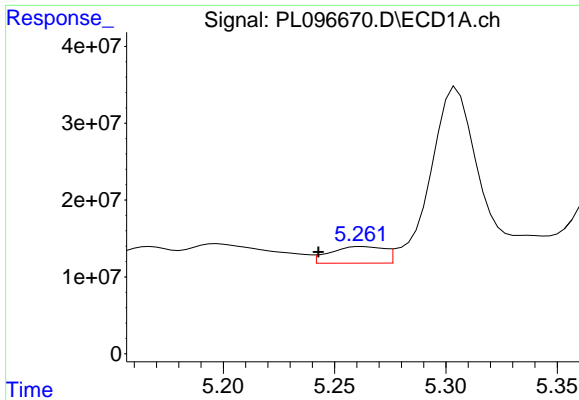
#3 gamma-BHC (Lindane)  
 R.T.: 0.000 min  
 Exp R.T. : 3.665 min  
 Response: 0  
 Conc: N.D.



#4 Heptachlor  
 R.T.: 4.915 min  
 Delta R.T.: 0.013 min  
 Response: 102574992  
 Conc: 24.68 ng/ml

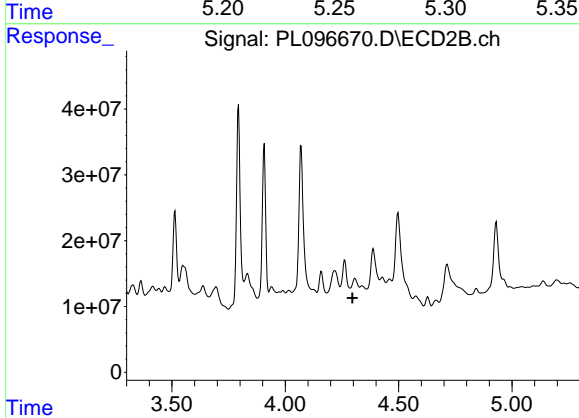


#4 Heptachlor  
 R.T.: 0.000 min  
 Exp R.T. : 4.014 min  
 Response: 0  
 Conc: N.D.

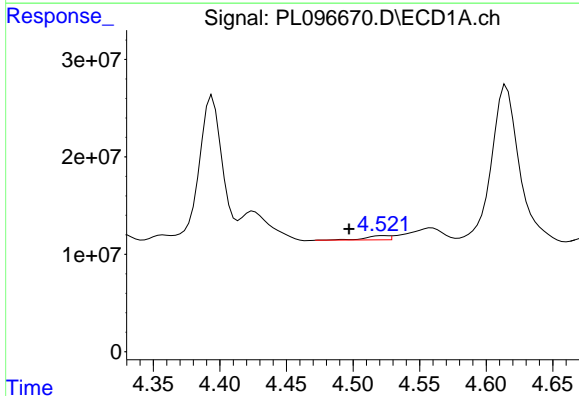


#5 Aldrin  
 R.T.: 5.262 min  
 Delta R.T.: 0.020 min  
 Response: 36695949  
 Conc: 8.53 ng/ml

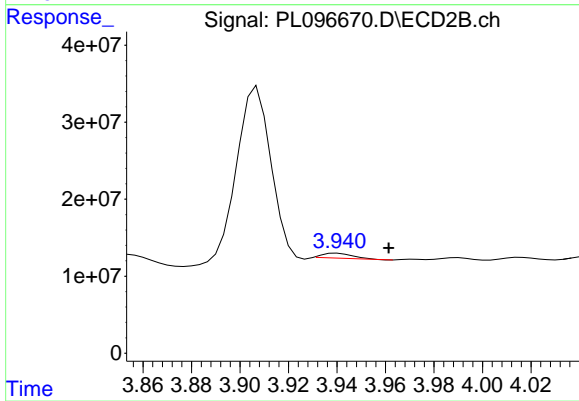
Instrument :  
 ECD\_L  
 ClientSampleId :  
 FRAC TANKRE



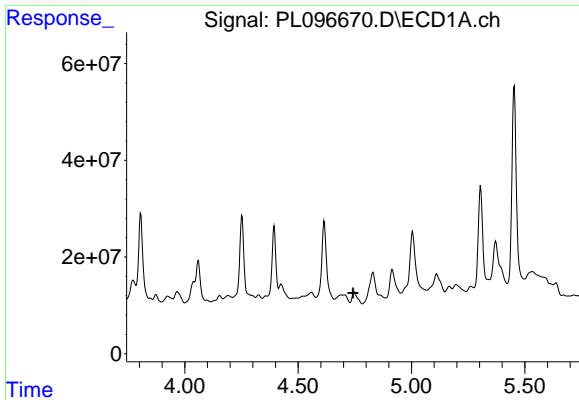
#5 Aldrin  
 R.T.: 4.307 min  
 Delta R.T.: 0.011 min  
 Response: -14263964  
 Conc: N.D.



#6 beta-BHC  
 R.T.: 4.523 min  
 Delta R.T.: 0.026 min  
 Response: 5273323  
 Conc: 2.92 ng/ml



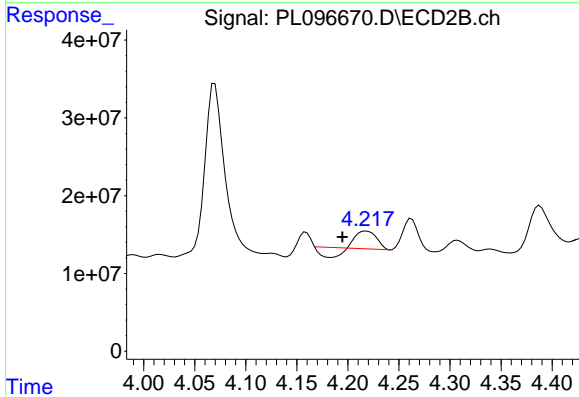
#6 beta-BHC  
 R.T.: 3.940 min  
 Delta R.T.: -0.021 min  
 Response: 5555729  
 Conc: 1.97 ng/ml



#7 delta-BHC

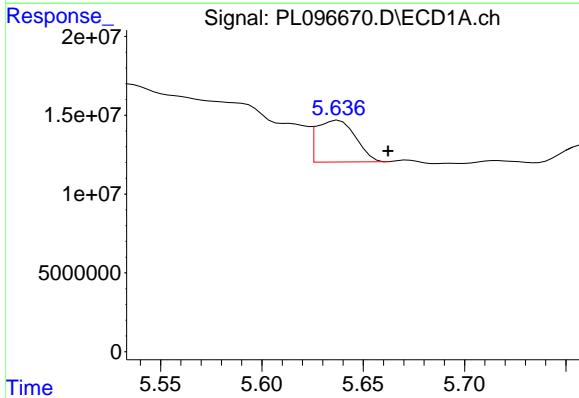
R.T.: 0.000 min  
 Exp R.T.: 4.743 min  
 Response: 0  
 Conc: N.D.

Instrument :  
 ECD\_L  
 ClientSampleId :  
 FRAC TANKRE



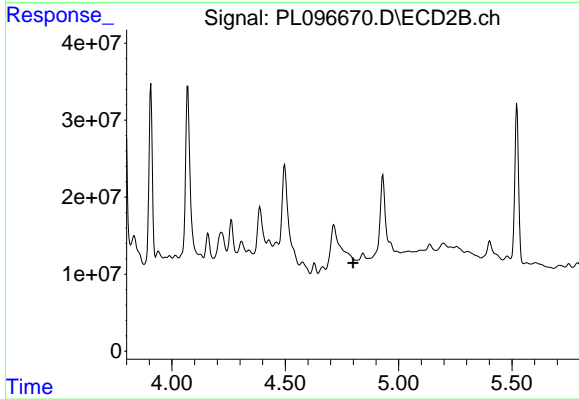
#7 delta-BHC

R.T.: 4.218 min  
 Delta R.T.: 0.024 min  
 Response: 20509726  
 Conc: 3.17 ng/ml



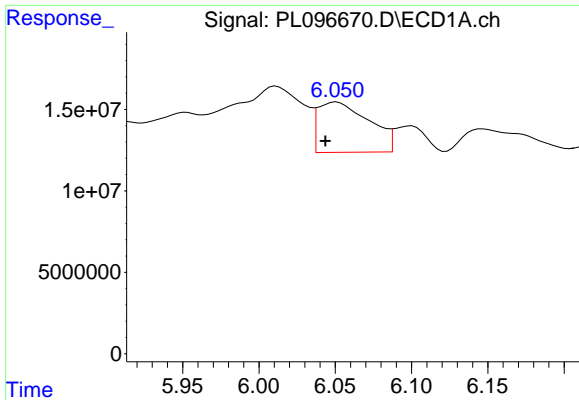
#8 Heptachlor epoxide

R.T.: 5.638 min  
 Delta R.T.: -0.024 min  
 Response: 35755638  
 Conc: 9.27 ng/ml



#8 Heptachlor epoxide

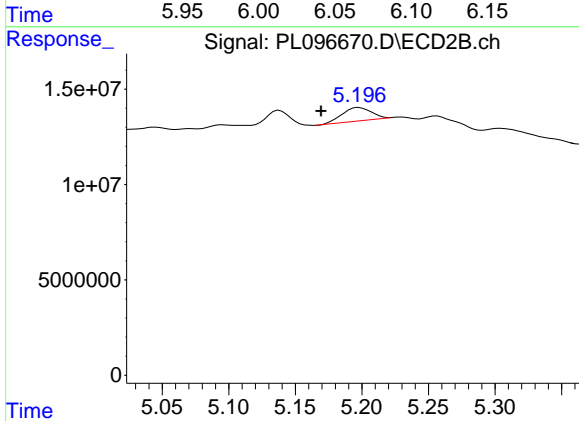
R.T.: 0.000 min  
 Exp R.T.: 4.799 min  
 Response: 0  
 Conc: N.D.



#9 Endosulfan I

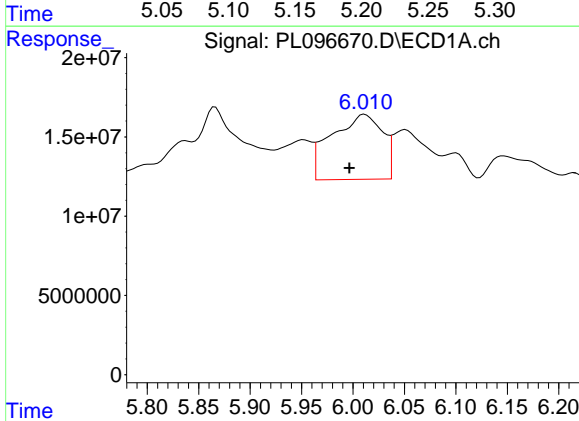
R.T.: 6.051 min  
 Delta R.T.: 0.008 min  
 Response: 72161067  
 Conc: 20.06 ng/ml

Instrument :  
 ECD\_L  
 ClientSampleId :  
 FRAC TANKRE



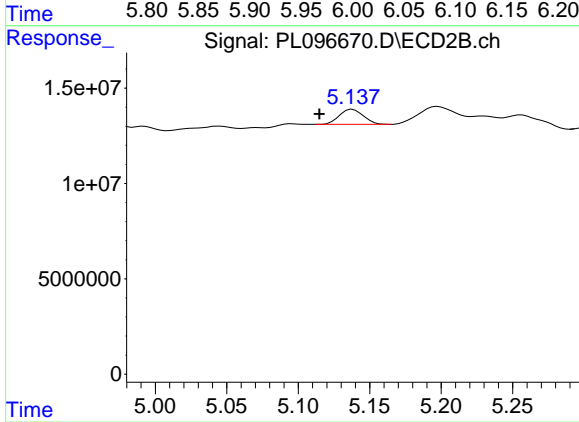
#9 Endosulfan I

R.T.: 5.198 min  
 Delta R.T.: 0.028 min  
 Response: 10565942  
 Conc: 1.91 ng/ml



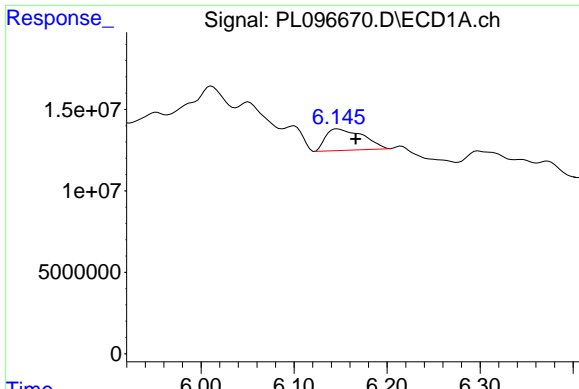
#11 alpha-Chlordane

R.T.: 6.011 min  
 Delta R.T.: 0.015 min  
 Response: 141184926  
 Conc: 36.63 ng/ml



#11 alpha-Chlordane

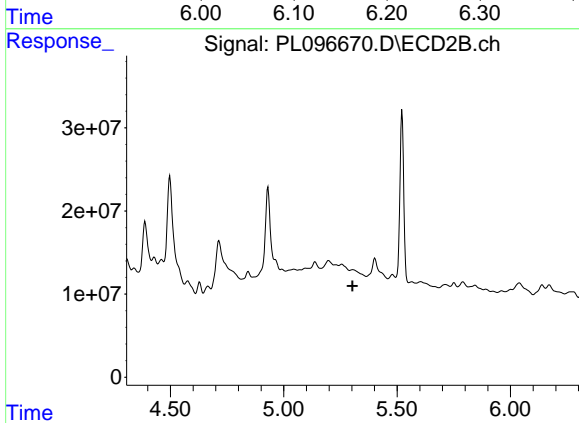
R.T.: 5.138 min  
 Delta R.T.: 0.023 min  
 Response: 9199484  
 Conc: 1.56 ng/ml



#12 4,4'-DDE

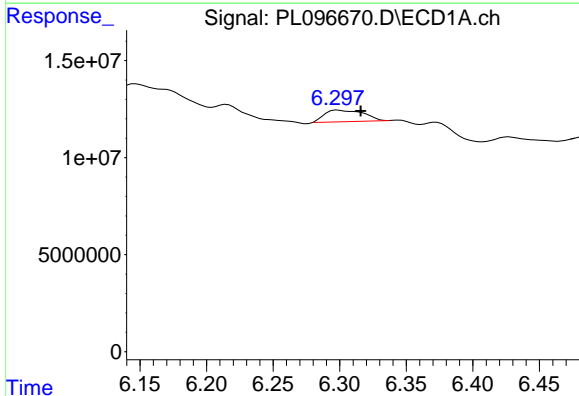
R.T.: 6.147 min  
 Delta R.T.: -0.019 min  
 Response: 36672109  
 Conc: 11.42 ng/ml

Instrument :  
 ECD\_L  
 ClientSampleId :  
 FRAC TANKRE



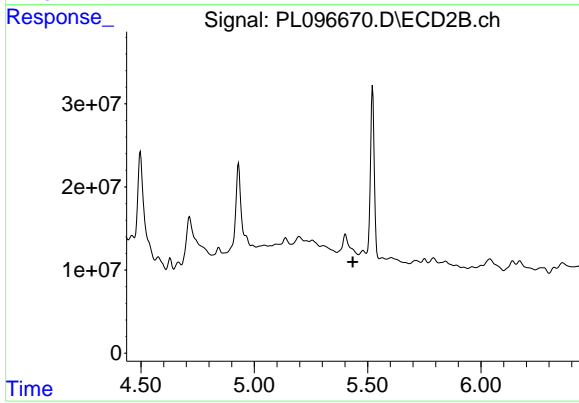
#12 4,4'-DDE

R.T.: 0.000 min  
 Exp R.T. : 5.304 min  
 Response: 0  
 Conc: N.D.



#13 Dieldrin

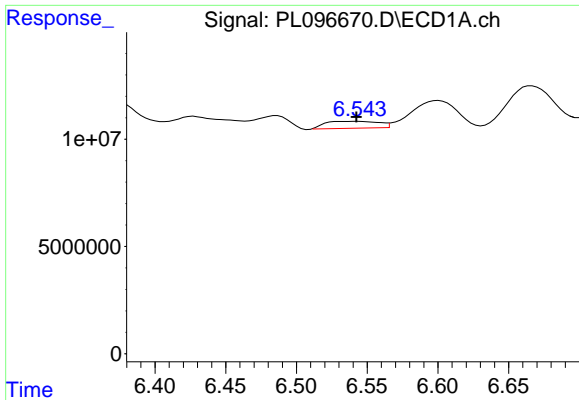
R.T.: 6.298 min  
 Delta R.T.: -0.018 min  
 Response: 12215722  
 Conc: 3.29 ng/ml



#13 Dieldrin

R.T.: 0.000 min  
 Exp R.T. : 5.434 min  
 Response: 0  
 Conc: N.D.

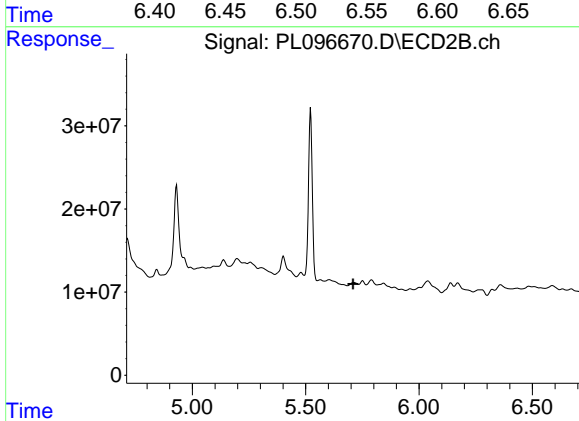




#14 Endrin

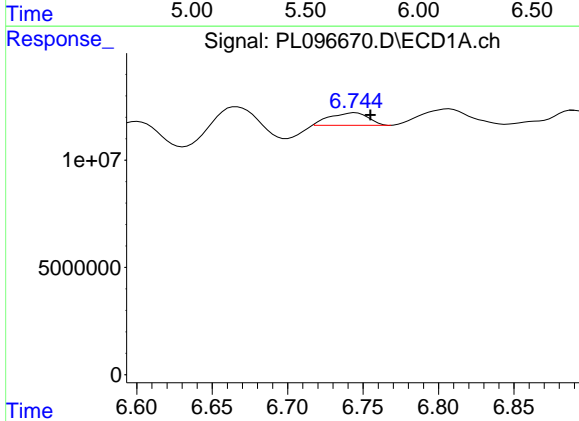
R.T.: 6.544 min  
 Delta R.T.: 0.002 min  
 Response: 8565535  
 Conc: 2.83 ng/ml

Instrument :  
 ECD\_L  
 ClientSampleId :  
 FRAC TANKRE



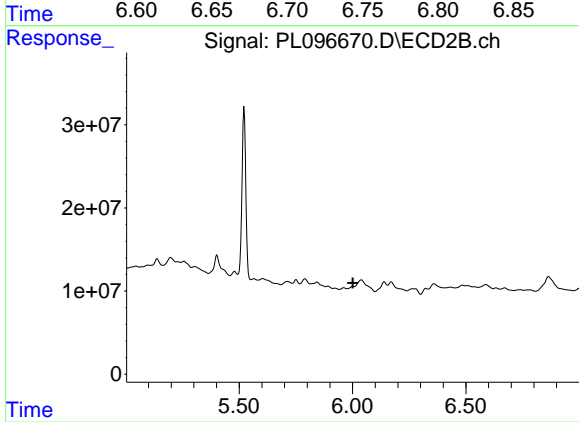
#14 Endrin

R.T.: 0.000 min  
 Exp R.T. : 5.709 min  
 Response: 0  
 Conc: N.D.



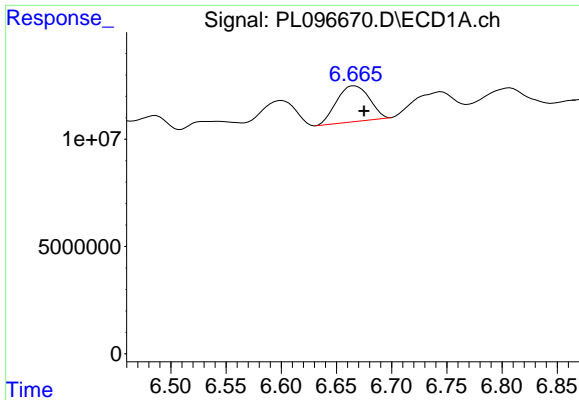
#15 Endosulfan II

R.T.: 6.745 min  
 Delta R.T.: -0.010 min  
 Response: 10399116  
 Conc: 3.25 ng/ml



#15 Endosulfan II

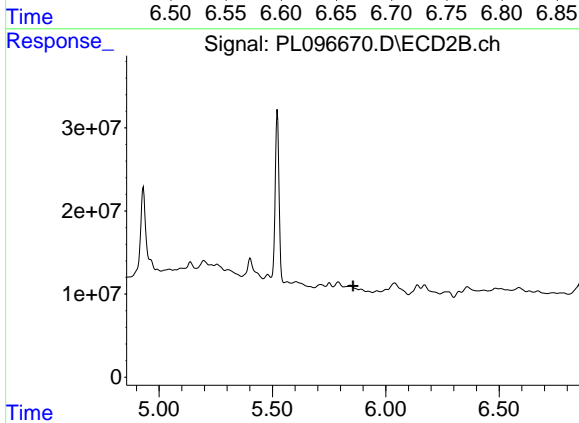
R.T.: 0.000 min  
 Exp R.T. : 6.001 min  
 Response: 0  
 Conc: N.D.



#16 4,4'-DDD

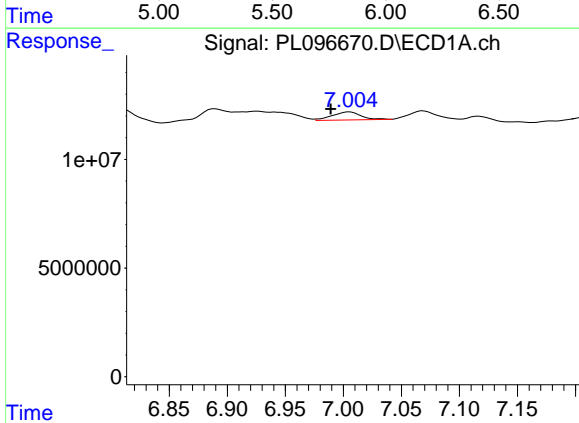
R.T.: 6.666 min  
 Delta R.T.: -0.009 min  
 Response: 34483087  
 Conc: 13.64 ng/ml

Instrument :  
 ECD\_L  
 ClientSampleId :  
 FRAC TANKRE



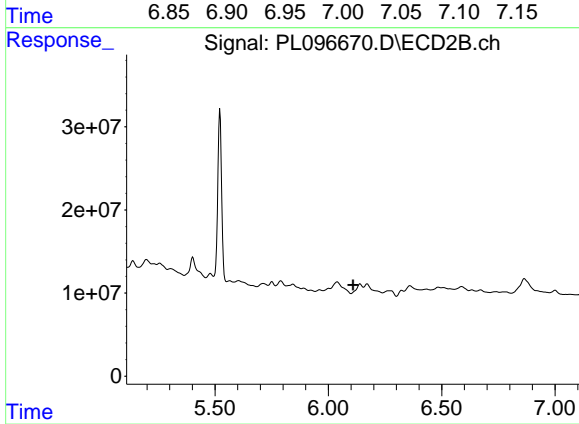
#16 4,4'-DDD

R.T.: 0.000 min  
 Exp R.T. : 5.856 min  
 Response: 0  
 Conc: N.D.



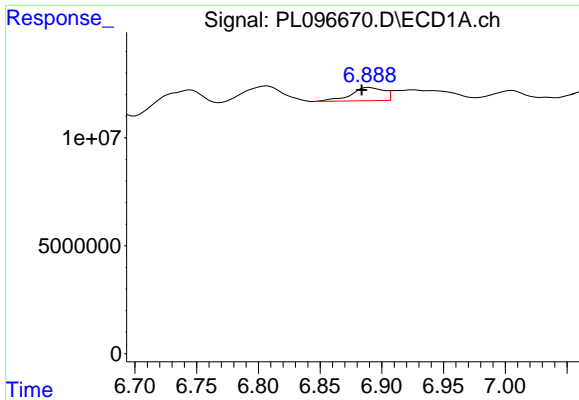
#17 4,4'-DDT

R.T.: 7.006 min  
 Delta R.T.: 0.016 min  
 Response: 6402981  
 Conc: 2.23 ng/ml



#17 4,4'-DDT

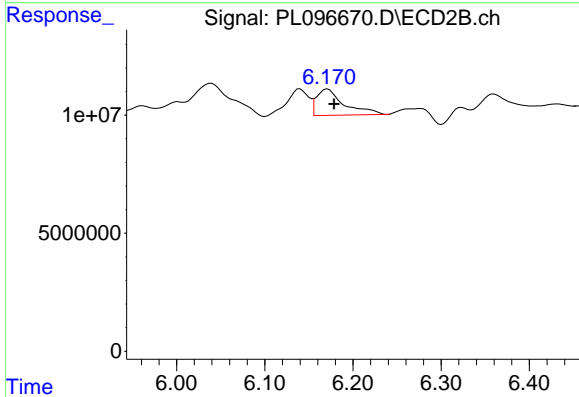
R.T.: 0.000 min  
 Exp R.T. : 6.109 min  
 Response: 0  
 Conc: N.D.



#18 Endrin aldehyde

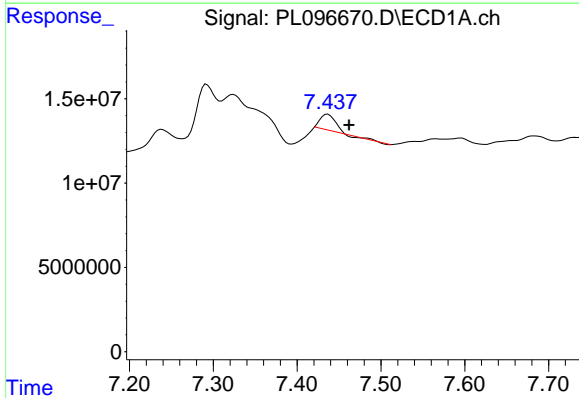
R.T.: 6.890 min  
 Delta R.T.: 0.006 min  
 Response: 11248251  
 Conc: 5.24 ng/ml

Instrument :  
 ECD\_L  
 ClientSampleId :  
 FRAC TANKRE



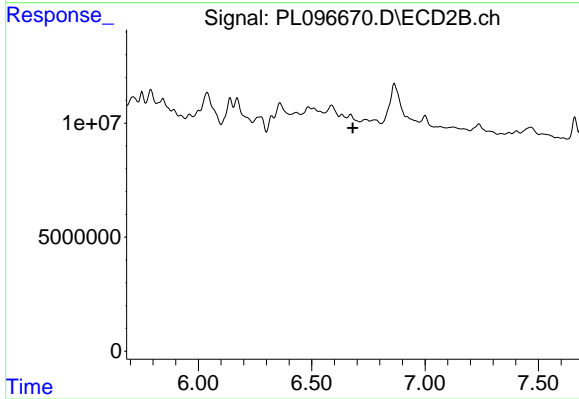
#18 Endrin aldehyde

R.T.: 6.171 min  
 Delta R.T.: -0.008 min  
 Response: 23894685  
 Conc: 3.36 ng/ml



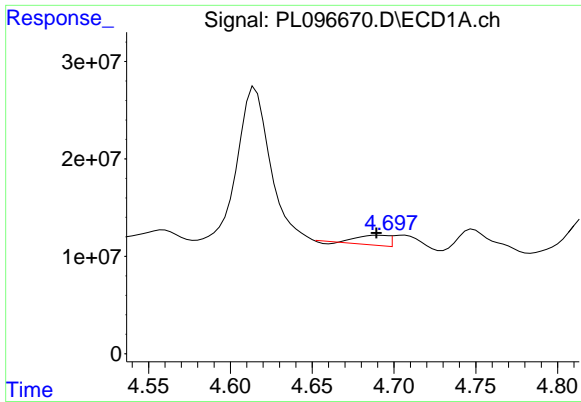
#20 Methoxychlor

R.T.: 7.437 min  
 Delta R.T.: -0.026 min  
 Response: 11816591  
 Conc: 8.05 ng/ml



#20 Methoxychlor

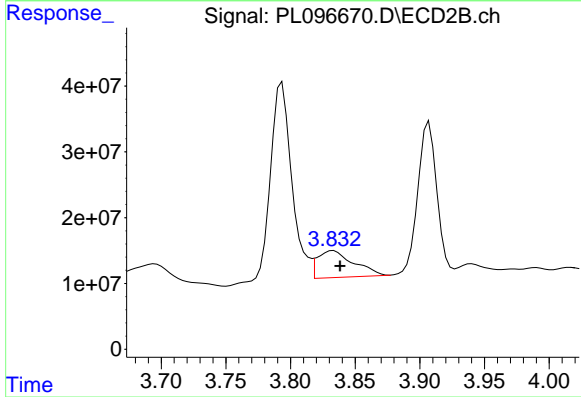
R.T.: 0.000 min  
 Exp R.T.: 6.681 min  
 Response: 0  
 Conc: N.D.



#23 Chlordane-1

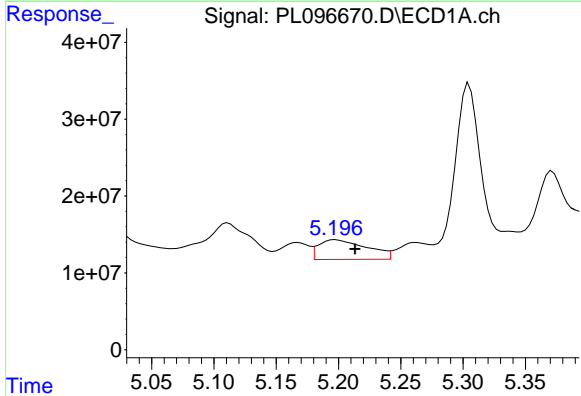
R.T.: 4.691 min  
 Delta R.T.: 0.001 min  
 Response: 12512051  
 Conc: 73.55 ng/ml

Instrument :  
 ECD\_L  
 ClientSampleId :  
 FRAC TANKRE



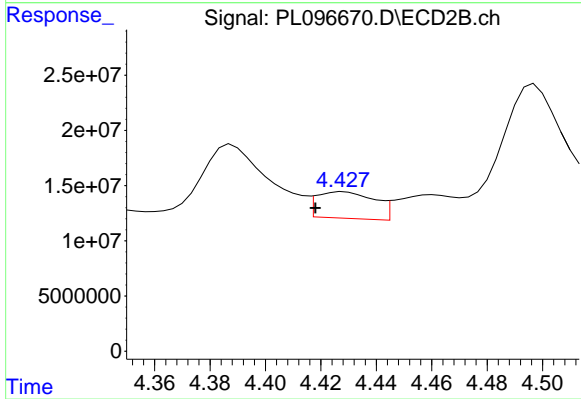
#23 Chlordane-1

R.T.: 3.833 min  
 Delta R.T.: -0.005 min  
 Response: 79395841  
 Conc: 378.73 ng/ml



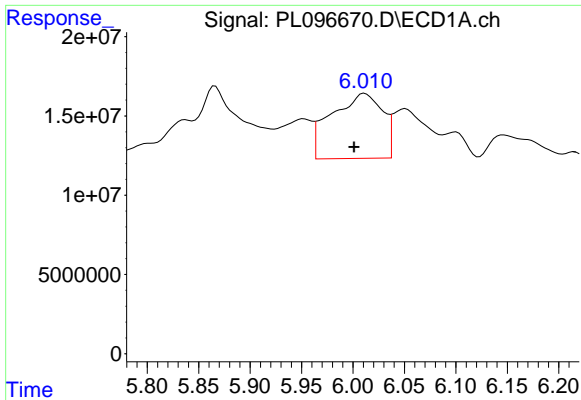
#24 Chlordane-2

R.T.: 5.197 min  
 Delta R.T.: -0.016 min  
 Response: 69310474  
 Conc: 396.04 ng/ml



#24 Chlordane-2

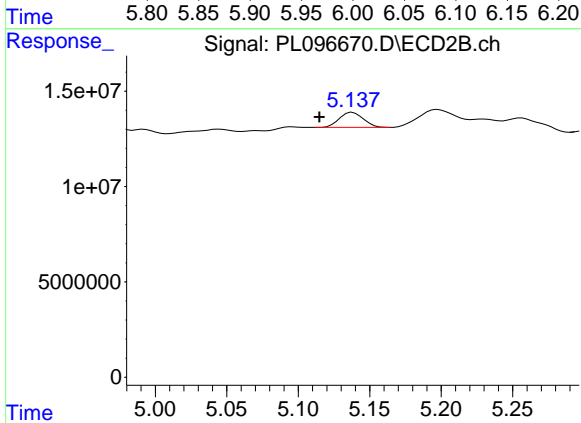
R.T.: 4.428 min  
 Delta R.T.: 0.010 min  
 Response: 34892118  
 Conc: 143.83 ng/ml



#26 Chlordane-4

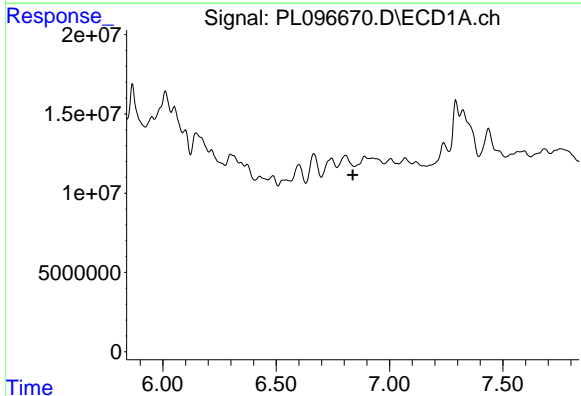
R.T.: 6.011 min  
 Delta R.T.: 0.010 min  
 Response: 141184926  
 Conc: 170.58 ng/ml

Instrument :  
 ECD\_L  
 ClientSampleId :  
 FRAC TANKRE



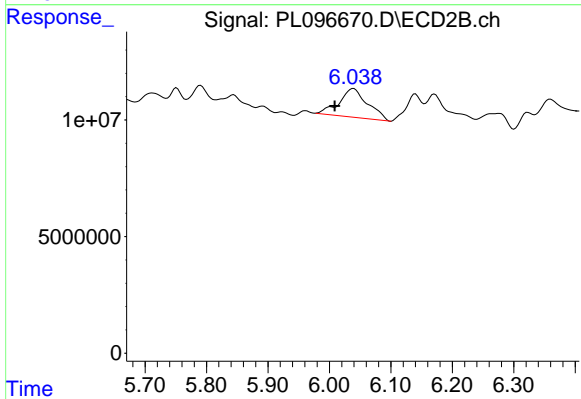
#26 Chlordane-4

R.T.: 5.138 min  
 Delta R.T.: 0.023 min  
 Response: 9199484  
 Conc: 14.78 ng/ml



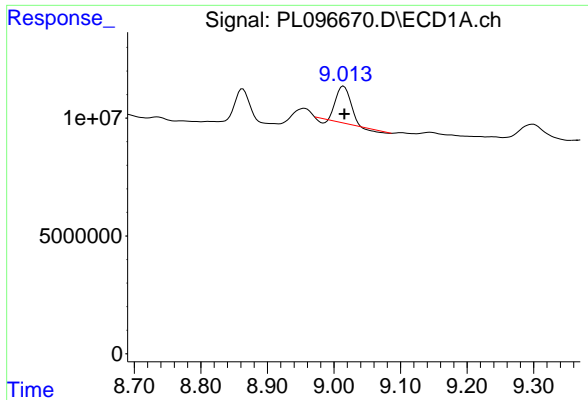
#27 Chlordane-5

R.T.: 0.000 min  
 Exp R.T. : 6.838 min  
 Response: 0  
 Conc: N.D.



#27 Chlordane-5

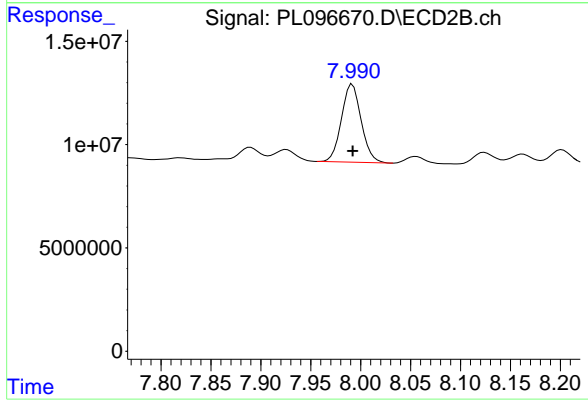
R.T.: 6.039 min  
 Delta R.T.: 0.031 min  
 Response: 39526007  
 Conc: 154.94 ng/ml



#28 Decachlorobiphenyl

R.T.: 9.015 min  
 Delta R.T.: -0.001 min  
 Response: 21775871  
 Conc: 9.13 ng/ml

Instrument :  
 ECD\_L  
 ClientSampleId :  
 FRAC TANKRE



#28 Decachlorobiphenyl

R.T.: 7.992 min  
 Delta R.T.: 0.000 min  
 Response: 52028840  
 Conc: 11.99 ng/ml