

Data Path : Z:\pestpcbsrv\HPCHEM1\ECD\_L\Data\PL080118\  
 Data File : PL038735.D  
 Signal(s) : Signal #1: ECD1A.ch Signal #2: ECD2B.ch  
 Acq On : 01 Aug 2018 03:18  
 Operator : AJ\SJ  
 Sample : PB111634TB  
 Misc :  
 ALS Vial : 13 Sample Multiplier: 1

Instrument :  
 ECD\_L  
 ClientSampleId :  
 PB111634TB

Integration File signal 1: autoint1.e  
 Integration File signal 2: autoint2.e  
 Quant Time: Aug 01 07:47:01 2018  
 Quant Method : Z:\PESTPCBSRV\HPCHEM1\ECD\_L\methods\PL071318.M  
 Quant Title : GC Extractables  
 QLast Update : Sat Jul 14 00:12:12 2018  
 Response via : Initial Calibration  
 Integrator: ChemStation

Volume Inj. : 2 µl  
 Signal #1 Phase : ZB-MR1 Signal #2 Phase: ZB-MR2  
 Signal #1 Info : 30M x 0.32mm x0.5 Signal #2 Info : 30M x 0.32mm x0.25µm

Compound	RT#1	RT#2	Resp#1	Resp#2	ng/ml	ng/ml
-----						
System Monitoring Compounds						
1) SA Tetrachlo...	3.325	3.928	146.6E6	57291441	19.689	21.826
28) SA Decachlor...	7.992	8.935	148.4E6	55978000	19.567	22.900

Target Compounds

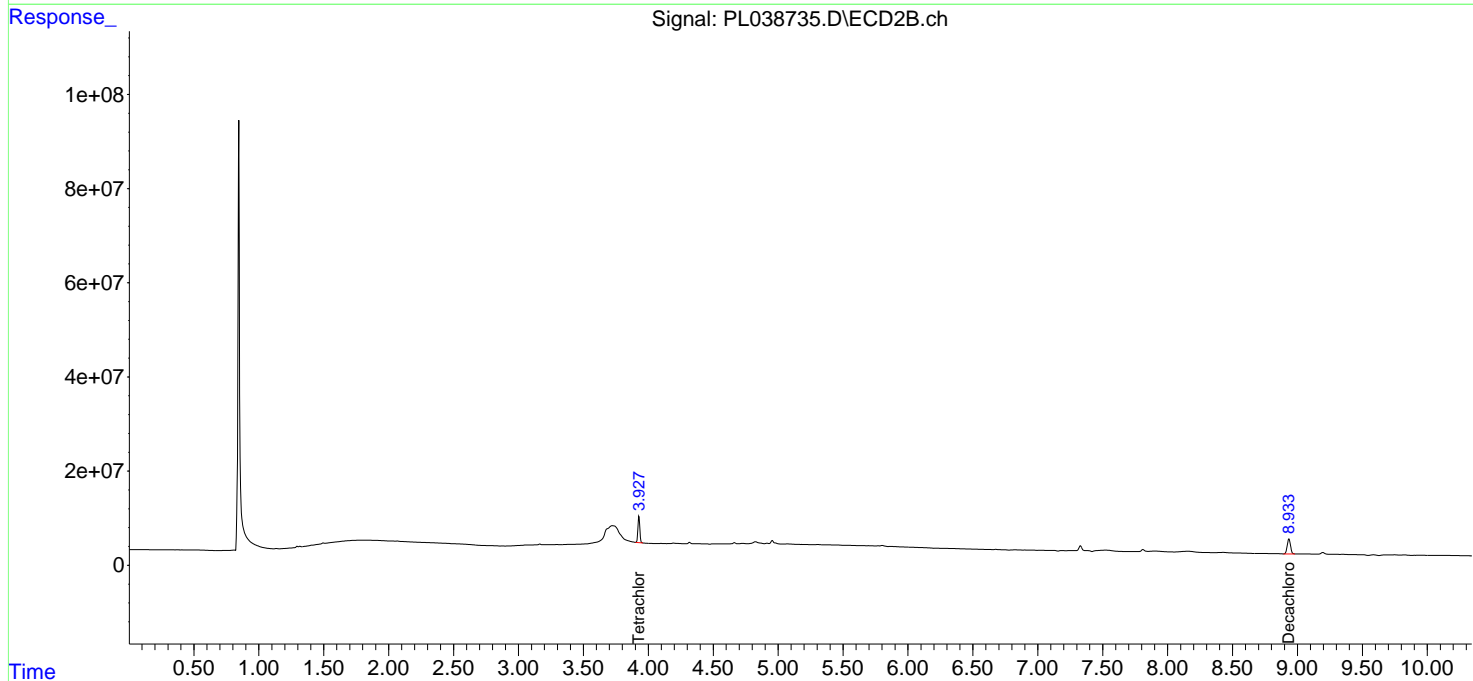
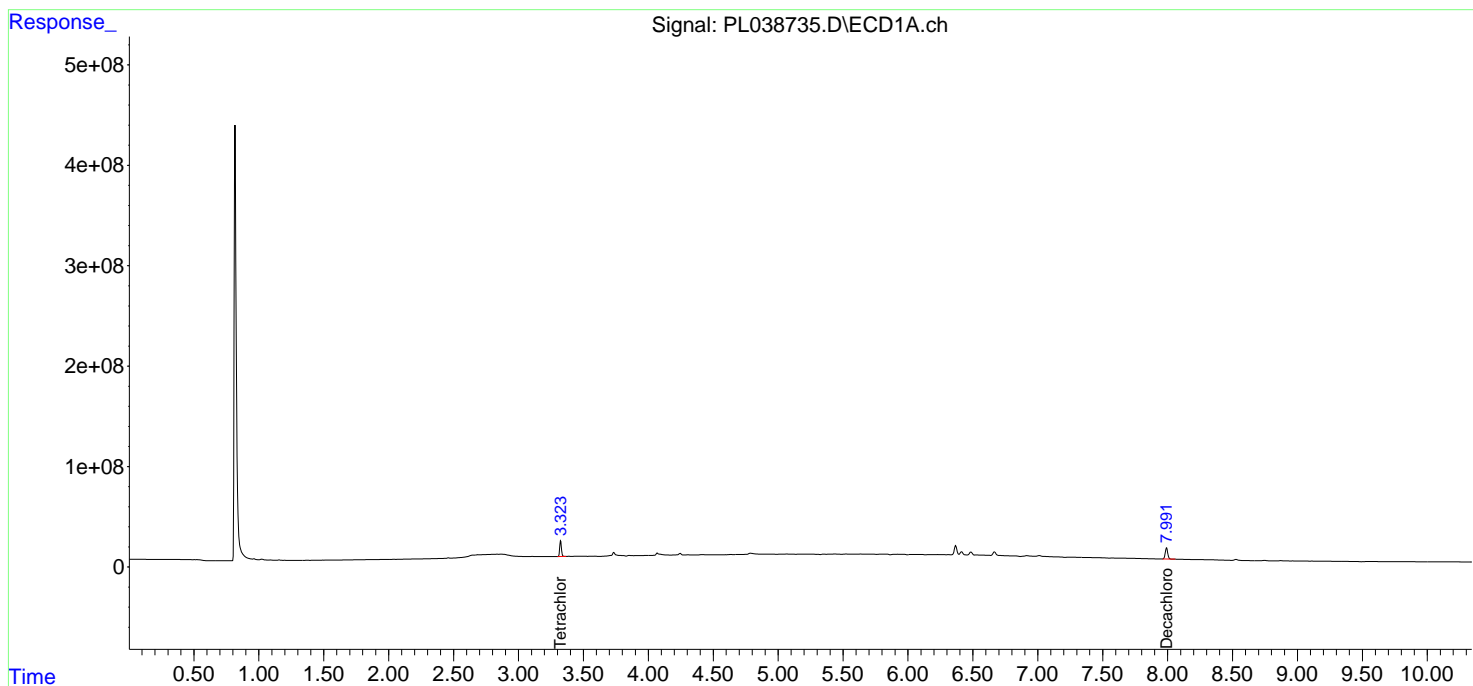
(f)=RT Delta > 1/2 Window (#)=Amounts differ by > 25% (m)=manual int.

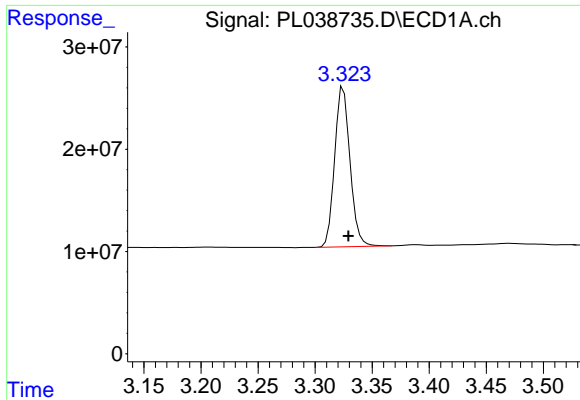
Data Path : Z:\pestpcbsrv\HPCHEM1\ECD\_L\Data\PL080118\  
 Data File : PL038735.D  
 Signal(s) : Signal #1: ECD1A.ch Signal #2: ECD2B.ch  
 Acq On : 01 Aug 2018 03:18  
 Operator : AJ\SJ  
 Sample : PB111634TB  
 Misc :  
 ALS Vial : 13 Sample Multiplier: 1

Instrument :  
 ECD\_L  
 ClientSampled :  
 PB111634TB

Integration File signal 1: autoint1.e  
 Integration File signal 2: autoint2.e  
 Quant Time: Aug 01 07:47:01 2018  
 Quant Method : Z:\PESTPCBSRV\HPCHEM1\ECD\_L\methods\PL071318.M  
 Quant Title : GC Extractables  
 QLast Update : Sat Jul 14 00:12:12 2018  
 Response via : Initial Calibration  
 Integrator: ChemStation

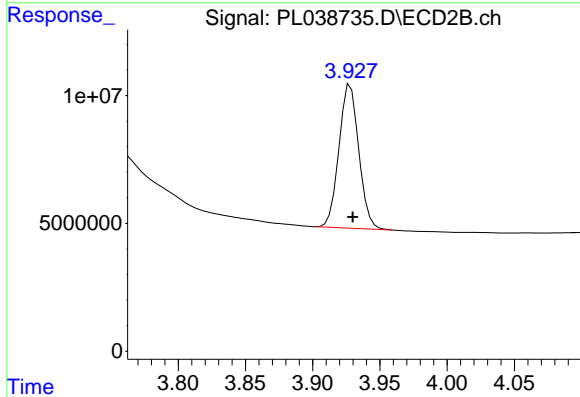
Volume Inj. : 2 µl  
 Signal #1 Phase : ZB-MR1 Signal #2 Phase: ZB-MR2  
 Signal #1 Info : 30M x 0.32mm x0.5 Signal #2 Info : 30M x 0.32mm x0.25µm



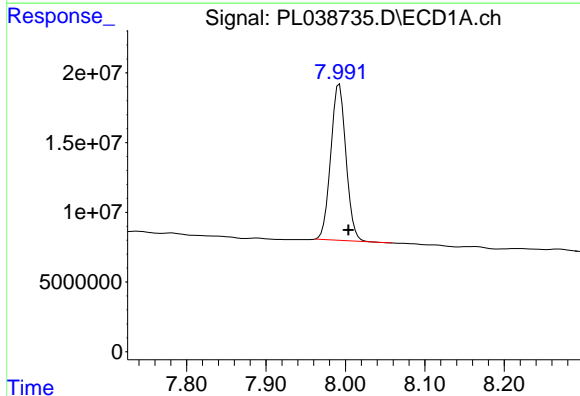


#1 Tetrachloro-m-xylene  
 R.T.: 3.325 min  
 Delta R.T.: -0.004 min  
 Response: 146609105  
 Conc: 19.69 ng/ml

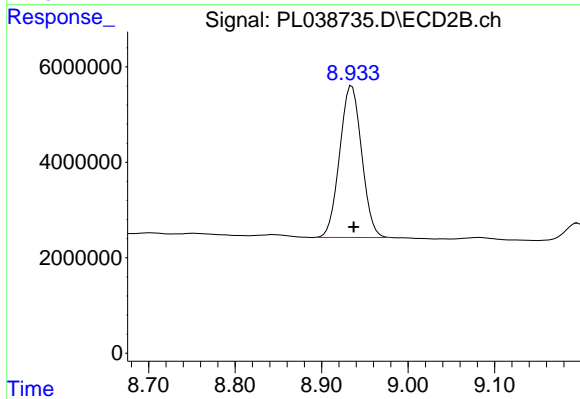
Instrument :  
 ECD\_L  
 ClientSampleId :  
 PB111634TB



#1 Tetrachloro-m-xylene  
 R.T.: 3.928 min  
 Delta R.T.: -0.002 min  
 Response: 57291441  
 Conc: 21.83 ng/ml



#28 Decachlorobiphenyl  
 R.T.: 7.992 min  
 Delta R.T.: -0.011 min  
 Response: 148434387  
 Conc: 19.57 ng/ml



#28 Decachlorobiphenyl  
 R.T.: 8.935 min  
 Delta R.T.: -0.002 min  
 Response: 55978000  
 Conc: 22.90 ng/ml