

Data Path : Z:\pestpcbsrv\HPCHEM1\ECD_L\Data\PL080122\
 Data File : PL076825.D
 Signal(s) : Signal #1: ECD1A.ch Signal #2: ECD2B.ch
 Acq On : 01 Aug 2022 18:11
 Operator : AR\AJ
 Sample : N3893-16DL 1X
 Misc :
 ALS Vial : 8 Sample Multiplier: 1

Instrument :
 ECD_L
 ClientSampleId :
 RVE-16DL

Integration File signal 1: autoint1.e
 Integration File signal 2: autoint2.e
 Quant Time: Aug 02 04:24:57 2022
 Quant Method : Z:\pestpcbsrv\HPCHEM1\ECD_L\methods\PL080122.M
 Quant Title : GC Extractables
 QLast Update : Mon Aug 01 16:34:20 2022
 Response via : Initial Calibration
 Integrator: ChemStation

Volume Inj. : 1 µl
 Signal #1 Phase : ZB-MR2 Signal #2 Phase: ZB-MR1
 Signal #1 Info : 30M x 0.32mm x0.2 Signal #2 Info : 30M x 0.32mm x0.5µm

Compound	RT#1	RT#2	Resp#1	Resp#2	ng/ml	ng/ml
System Monitoring Compounds						
1) SA Tetrachlo...	3.420	2.640	9999110	27259223	10.503	11.810
28) SA Decachlor...	8.913	7.747	9109525	22333397	11.463	11.616
Target Compounds						
2) A alpha-BHC	0.000	3.162f	0	566118	N.D.	0.171 #
3) MA gamma-BHC...	4.241f	3.461	500537	1282983	0.395	0.449
4) MA Heptachlor	0.000	3.824f	0	161421	N.D.	0.056 #
5) MB Aldrin	5.123f	4.042f	269019	8344240	0.231	3.001 #
6) B beta-BHC	4.428	0.000	1176429	0	2.226	N.D. #
7) B delta-BHC	0.000	3.996	0	2496868	N.D.	0.815 #
8) B Heptachlo...	5.563	4.576	2243649	551778	2.400	0.226 #
9) A Endosulfan I	0.000	4.959f	0	9162203	N.D.	4.314 #
10) B gamma-Chl...	5.818	4.828	3713654	17514393	3.633	7.152 #
11) B alpha-Chl...	5.904	4.879	868242	14121349	0.828	5.886 #
12) B 4,4'-DDE	6.079	5.073	4417130	25467401	4.680	10.934 #
13) MA Dieldrin	6.232	5.206	34732	5598214	0.034	2.308 #
14) MA Endrin	6.492f	5.485	9533569	4635276	10.348	2.141 #
15) B Endosulfa...	6.681	5.771	173726	4724724	0.194	2.140 #
16) A 4,4'-DDD	6.606	5.627	53250364	142.3E6	62.306	76.239
17) MA 4,4'-DDT	6.917	5.874	9826885	24227416	11.673	12.971
18) B Endrin al...	6.827	5.948	472487	-30031	0.642	N.D. #
19) B Endosulfa...	7.055	6.164	6822881	16946802	7.932	8.837
20) A Methoxychlor	7.370f	6.471f	1670358	12290425	3.467	12.040 #
22) Mirex	8.018	6.864f	573345	17238098	0.776	10.701 #
23) Chlordane-1	0.000	3.619	0	2667258	N.D.	33.430 #
24) Chlordane-2	5.123	0.000	269019	0	6.461	N.D. #
25) Chlordane-3	5.818	4.828	3713654	17514393	23.002	63.511 #
26) Chlordane-4	5.904	4.879	868242	14121349	4.425	48.954 #
27) Chlordane-5	6.786f	5.561f	-222471	3668883	N.D.	48.066

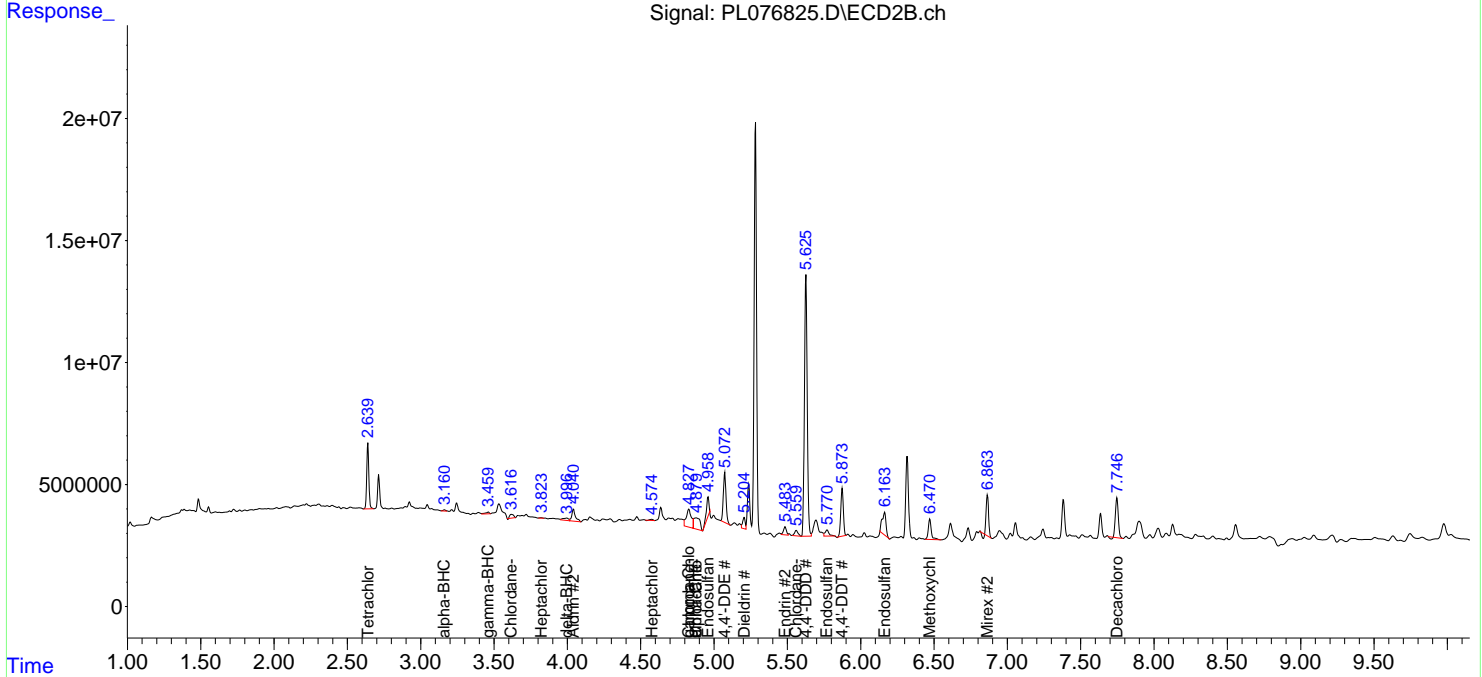
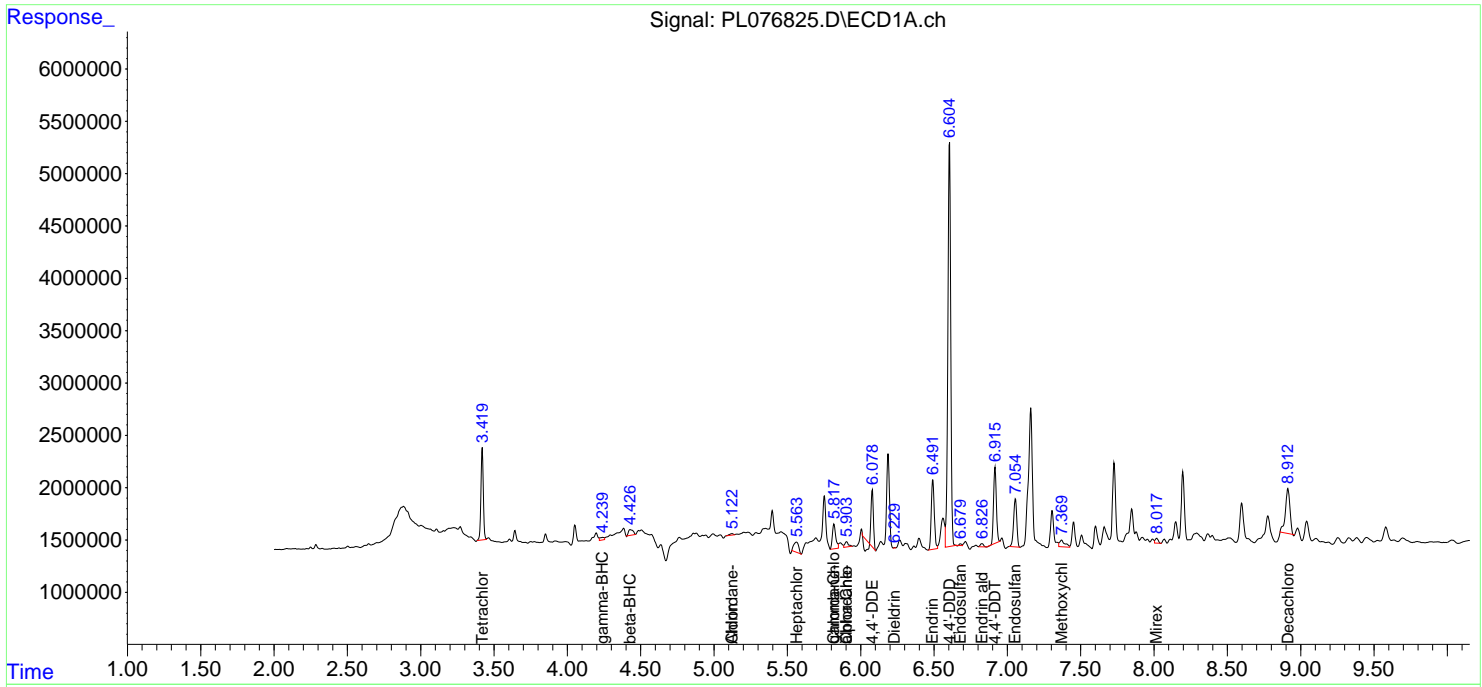
(f)=RT Delta > 1/2 Window (#)=Amounts differ by > 25% (m)=manual int.

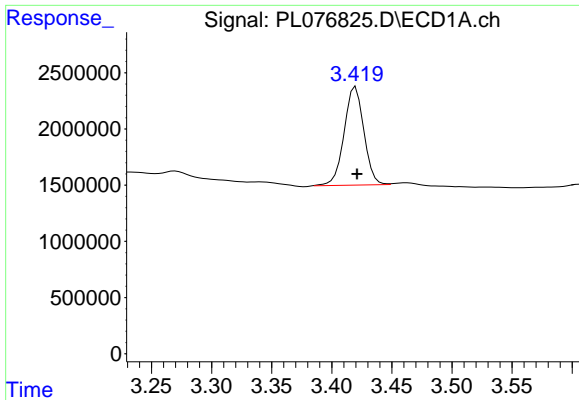
Data Path : Z:\pestpcbsrv\HPCHEM1\ECD_L\Data\PL080122\
 Data File : PL076825.D
 Signal(s) : Signal #1: ECD1A.ch Signal #2: ECD2B.ch
 Acq On : 01 Aug 2022 18:11
 Operator : AR\AJ
 Sample : N3893-16DL 1X
 Misc :
 ALS Vial : 8 Sample Multiplier: 1

Instrument :
 ECD_L
ClientSampleId :
 RVE-16DL

Integration File signal 1: autoint1.e
 Integration File signal 2: autoint2.e
 Quant Time: Aug 02 04:24:57 2022
 Quant Method : Z:\pestpcbsrv\HPCHEM1\ECD_L\methods\PL080122.M
 Quant Title : GC Extractables
 QLast Update : Mon Aug 01 16:34:20 2022
 Response via : Initial Calibration
 Integrator: ChemStation

Volume Inj. : 1 µl
 Signal #1 Phase : ZB-MR2 Signal #2 Phase: ZB-MR1
 Signal #1 Info : 30M x 0.32mm x0.2 Signal #2 Info : 30M x 0.32mm x0.5µm

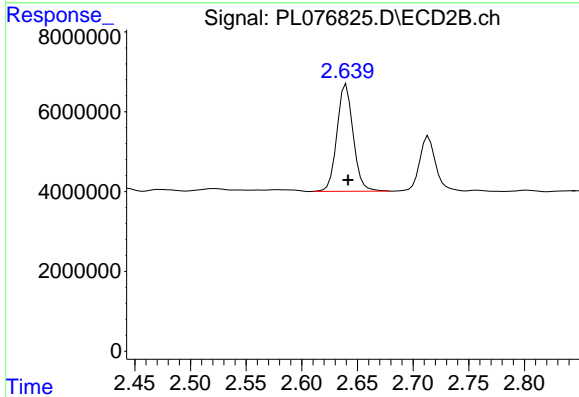




#1 Tetrachloro-m-xylene

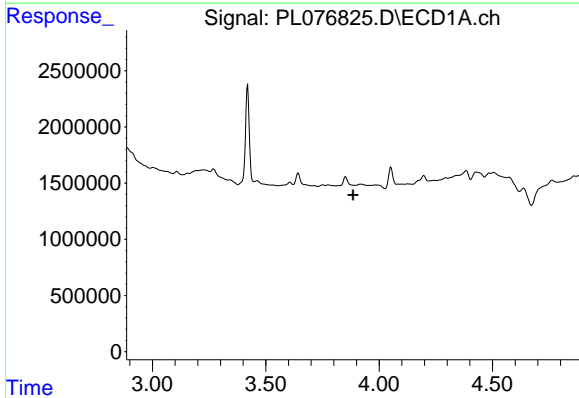
R.T.: 3.420 min
 Delta R.T.: -0.001 min
 Response: 9999110
 Conc: 10.50 ng/ml

Instrument :
 ECD_L
 ClientSampleId :
 RVE-16DL



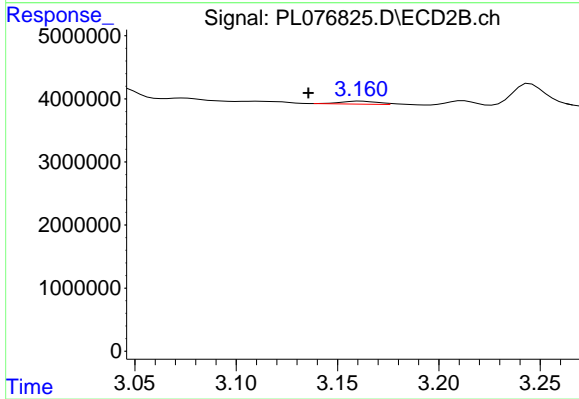
#1 Tetrachloro-m-xylene

R.T.: 2.640 min
 Delta R.T.: -0.001 min
 Response: 27259223
 Conc: 11.81 ng/ml



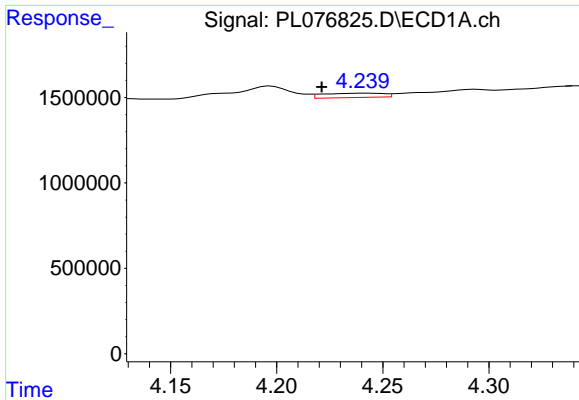
#2 alpha-BHC

R.T.: 0.000 min
 Exp R.T. : 3.886 min
 Response: 0
 Conc: N.D.



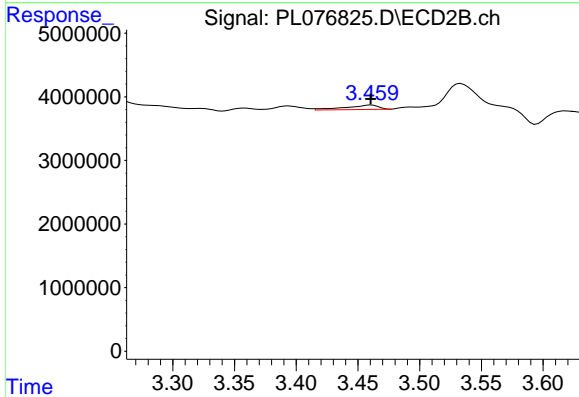
#2 alpha-BHC

R.T.: 3.162 min
 Delta R.T.: 0.026 min
 Response: 566118
 Conc: 0.17 ng/ml

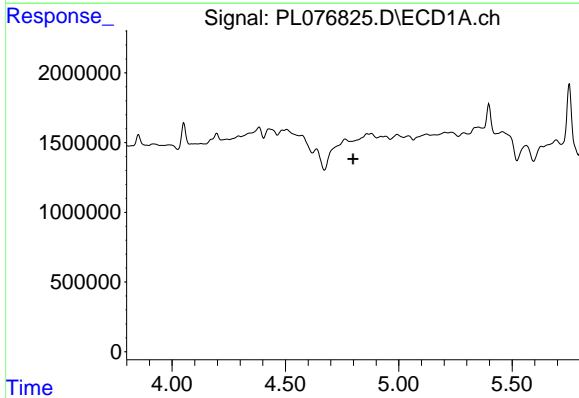


#3 gamma-BHC (Lindane)
 R.T.: 4.241 min
 Delta R.T.: 0.020 min
 Response: 500537
 Conc: 0.39 ng/ml

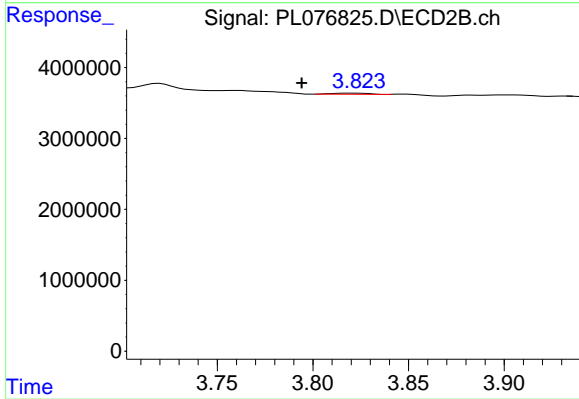
Instrument :
 ECD_L
 ClientSampleId :
 RVE-16DL



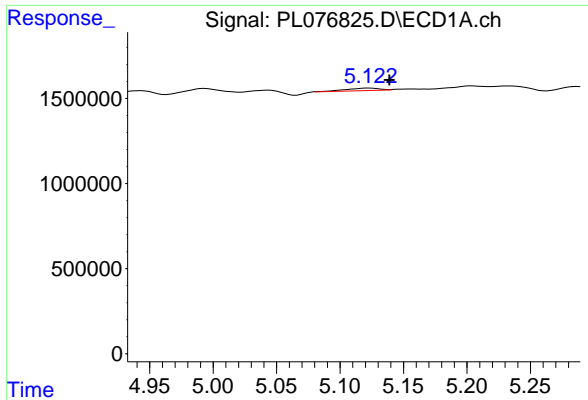
#3 gamma-BHC (Lindane)
 R.T.: 3.461 min
 Delta R.T.: 0.000 min
 Response: 1282983
 Conc: 0.45 ng/ml



#4 Heptachlor
 R.T.: 0.000 min
 Exp R.T. : 4.798 min
 Response: 0
 Conc: N.D.

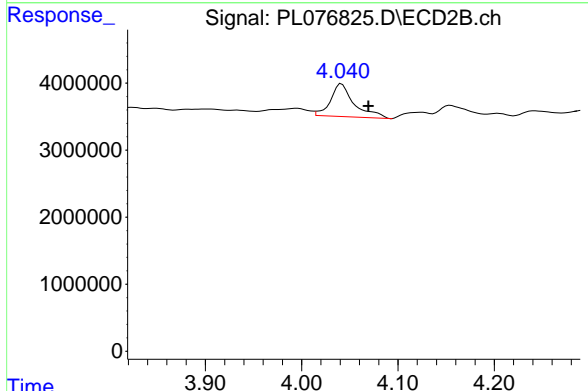


#4 Heptachlor
 R.T.: 3.824 min
 Delta R.T.: 0.029 min
 Response: 161421
 Conc: 0.06 ng/ml

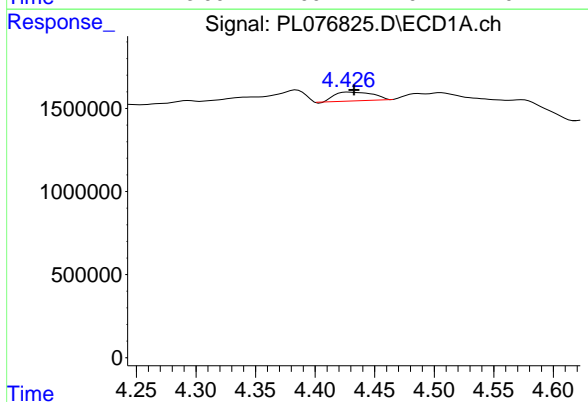


#5 Aldrin
 R.T.: 5.123 min
 Delta R.T.: -0.016 min
 Response: 269019
 Conc: 0.23 ng/ml

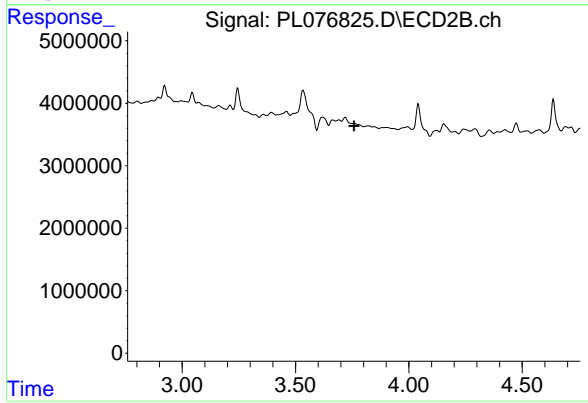
Instrument :
 ECD_L
 ClientSampleId :
 RVE-16DL



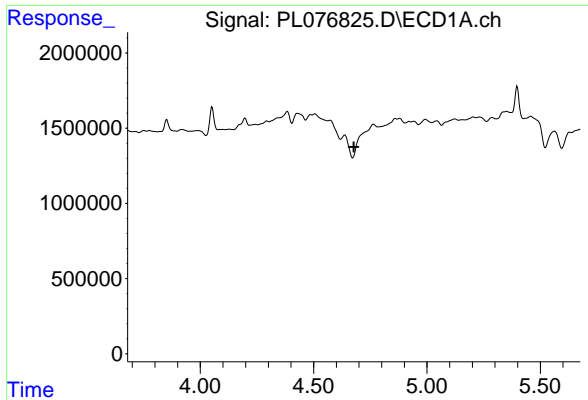
#5 Aldrin
 R.T.: 4.042 min
 Delta R.T.: -0.028 min
 Response: 8344240
 Conc: 3.00 ng/ml



#6 beta-BHC
 R.T.: 4.428 min
 Delta R.T.: -0.005 min
 Response: 1176429
 Conc: 2.23 ng/ml



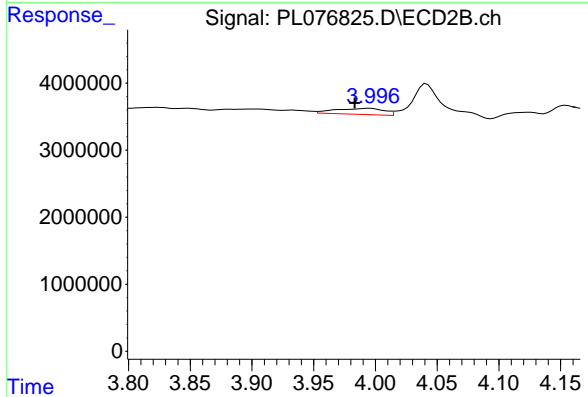
#6 beta-BHC
 R.T.: 0.000 min
 Exp R.T. : 3.758 min
 Response: 0
 Conc: N.D.



#7 delta-BHC

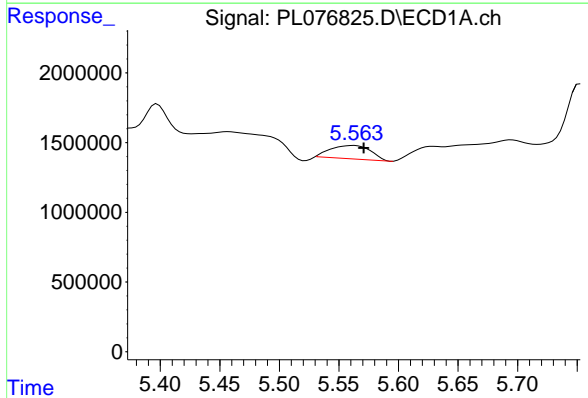
R.T.: 0.000 min
 Exp R.T.: 4.677 min
 Response: 0
 Conc: N.D.

Instrument :
 ECD_L
 ClientSampleId :
 RVE-16DL



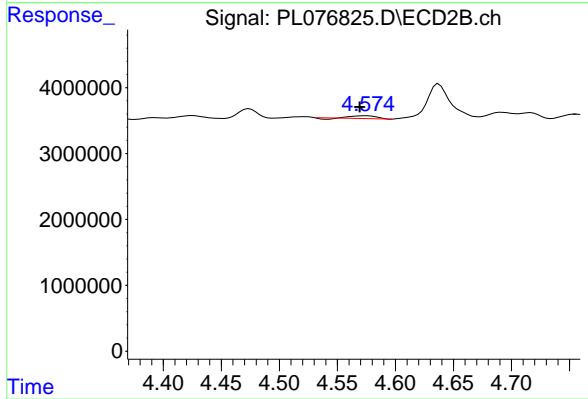
#7 delta-BHC

R.T.: 3.996 min
 Delta R.T.: 0.012 min
 Response: 2496868
 Conc: 0.82 ng/ml



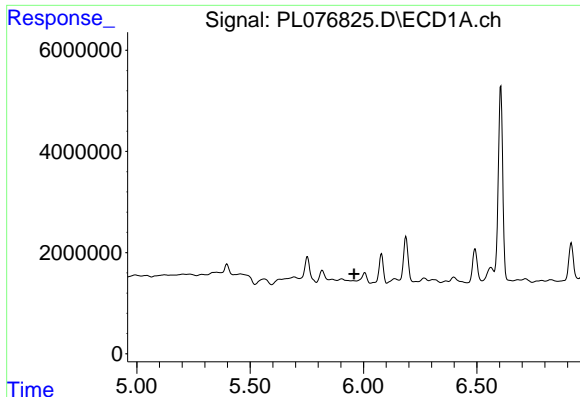
#8 Heptachlor epoxide

R.T.: 5.563 min
 Delta R.T.: -0.008 min
 Response: 2243649
 Conc: 2.40 ng/ml



#8 Heptachlor epoxide

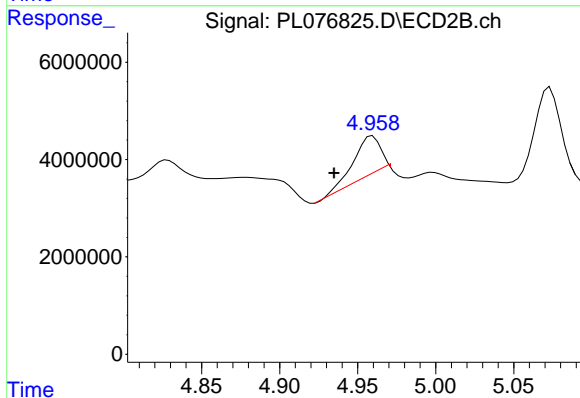
R.T.: 4.576 min
 Delta R.T.: 0.006 min
 Response: 551778
 Conc: 0.23 ng/ml



#9 Endosulfan I

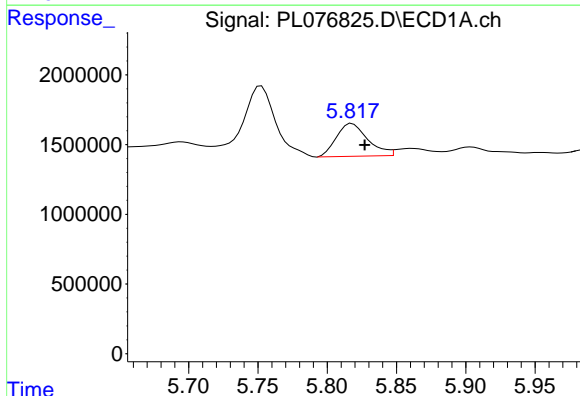
R.T.: 0.000 min
 Exp R.T.: 5.958 min
 Response: 0
 Conc: N.D.

Instrument :
 ECD_L
 ClientSampleId :
 RVE-16DL



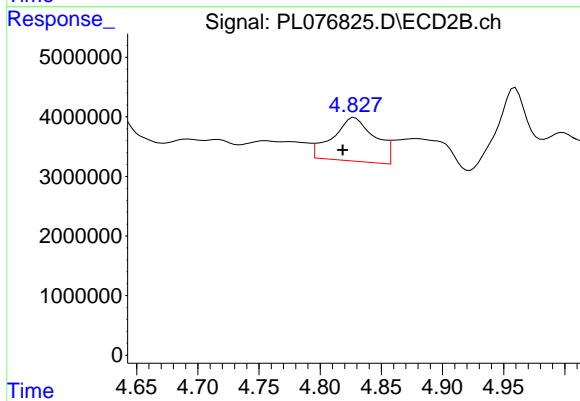
#9 Endosulfan I

R.T.: 4.959 min
 Delta R.T.: 0.025 min
 Response: 9162203
 Conc: 4.31 ng/ml



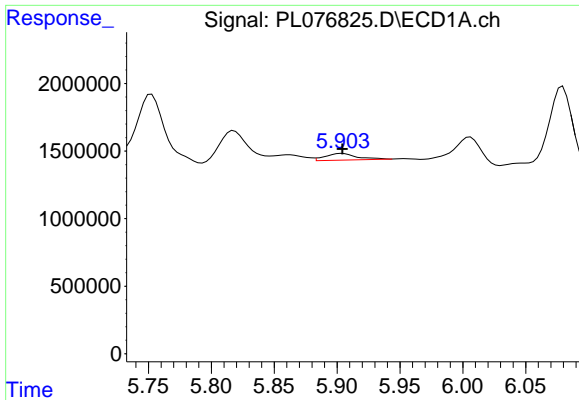
#10 gamma-Chlordane

R.T.: 5.818 min
 Delta R.T.: -0.009 min
 Response: 3713654
 Conc: 3.63 ng/ml



#10 gamma-Chlordane

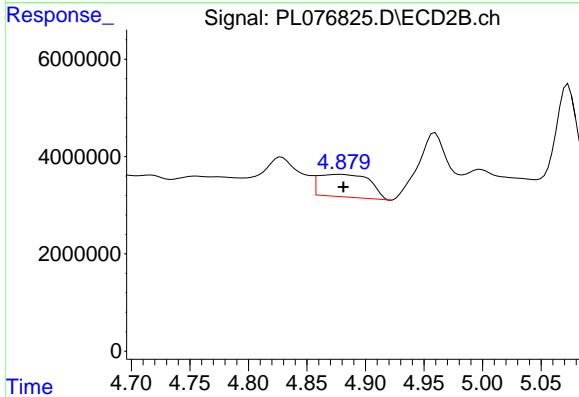
R.T.: 4.828 min
 Delta R.T.: 0.010 min
 Response: 17514393
 Conc: 7.15 ng/ml



#11 alpha-Chlordane

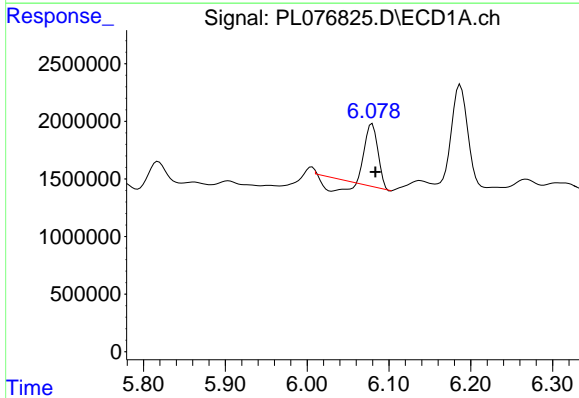
R.T.: 5.904 min
 Delta R.T.: 0.000 min
 Response: 868242
 Conc: 0.83 ng/ml

Instrument :
 ECD_L
 ClientSampleId :
 RVE-16DL



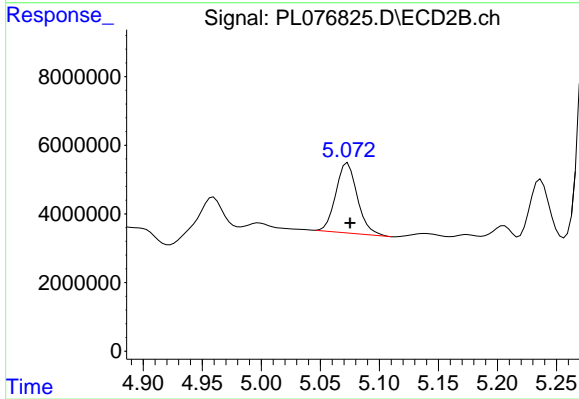
#11 alpha-Chlordane

R.T.: 4.879 min
 Delta R.T.: -0.002 min
 Response: 14121349
 Conc: 5.89 ng/ml



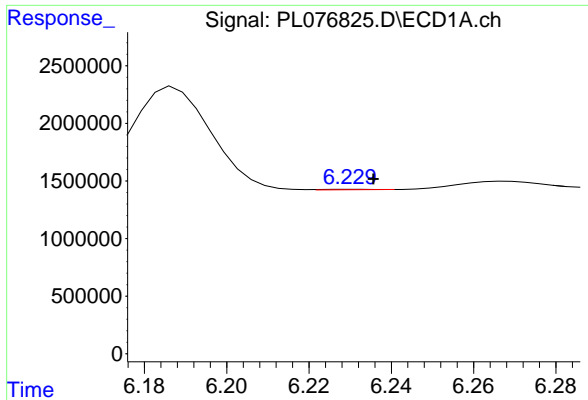
#12 4,4'-DDE

R.T.: 6.079 min
 Delta R.T.: -0.004 min
 Response: 4417130
 Conc: 4.68 ng/ml



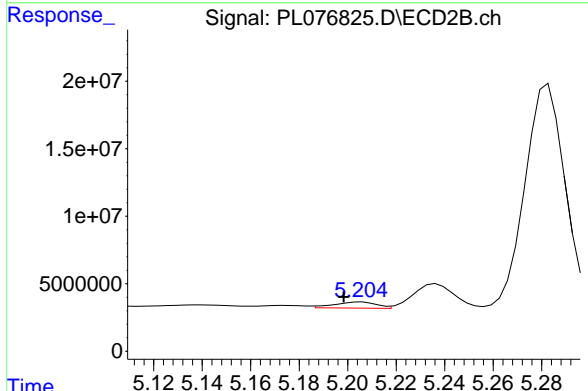
#12 4,4'-DDE

R.T.: 5.073 min
 Delta R.T.: -0.002 min
 Response: 25467401
 Conc: 10.93 ng/ml

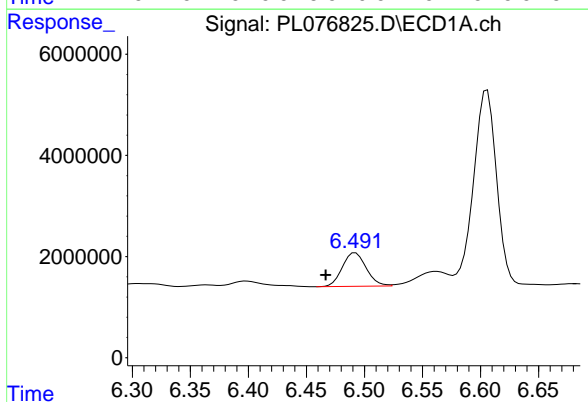


#13 Dieldrin
 R.T.: 6.232 min
 Delta R.T.: -0.004 min
 Response: 34732
 Conc: 0.03 ng/ml

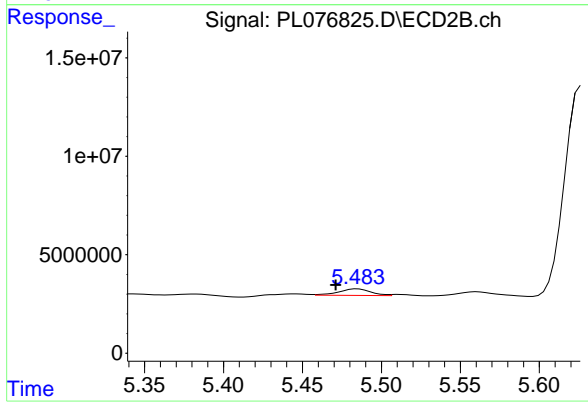
Instrument :
 ECD_L
 ClientSampleId :
 RVE-16DL



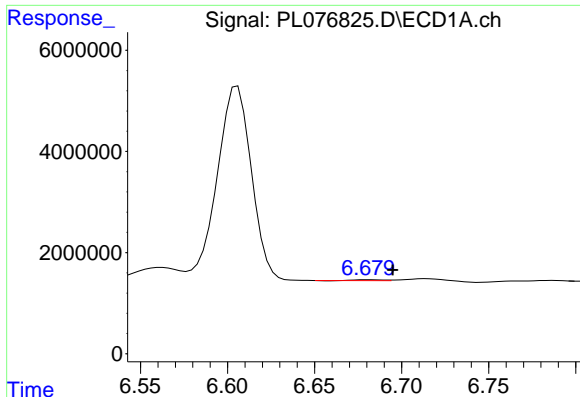
#13 Dieldrin
 R.T.: 5.206 min
 Delta R.T.: 0.007 min
 Response: 5598214
 Conc: 2.31 ng/ml



#14 Endrin
 R.T.: 6.492 min
 Delta R.T.: 0.025 min
 Response: 9533569
 Conc: 10.35 ng/ml



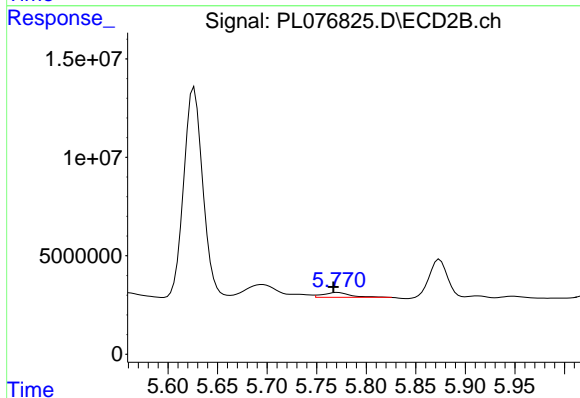
#14 Endrin
 R.T.: 5.485 min
 Delta R.T.: 0.014 min
 Response: 4635276
 Conc: 2.14 ng/ml



#15 Endosulfan II

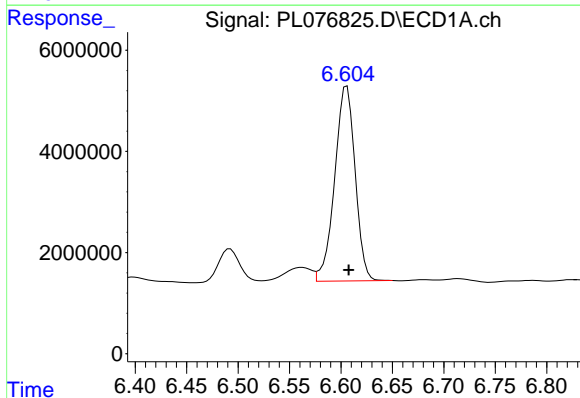
R.T.: 6.681 min
 Delta R.T.: -0.014 min
 Response: 173726
 Conc: 0.19 ng/ml

Instrument :
 ECD_L
 ClientSampleId :
 RVE-16DL



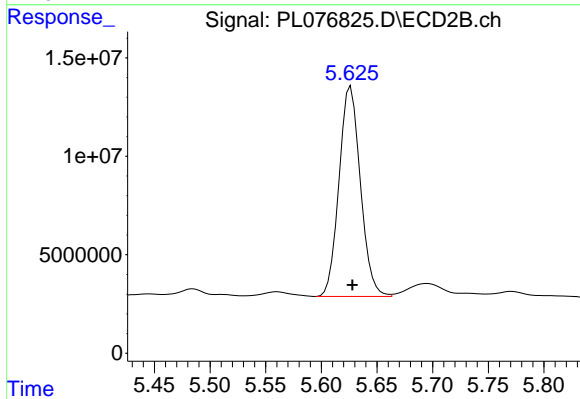
#15 Endosulfan II

R.T.: 5.771 min
 Delta R.T.: 0.004 min
 Response: 4724724
 Conc: 2.14 ng/ml



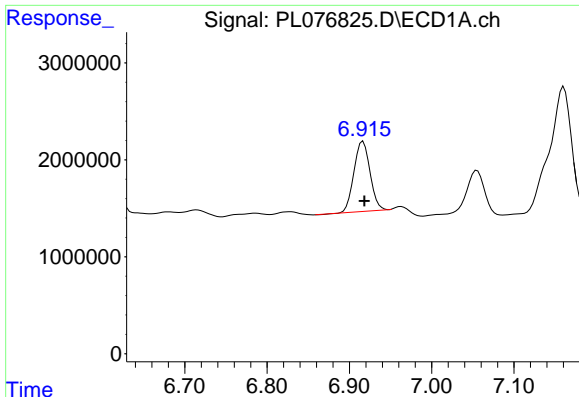
#16 4,4'-DDD

R.T.: 6.606 min
 Delta R.T.: -0.002 min
 Response: 53250364
 Conc: 62.31 ng/ml



#16 4,4'-DDD

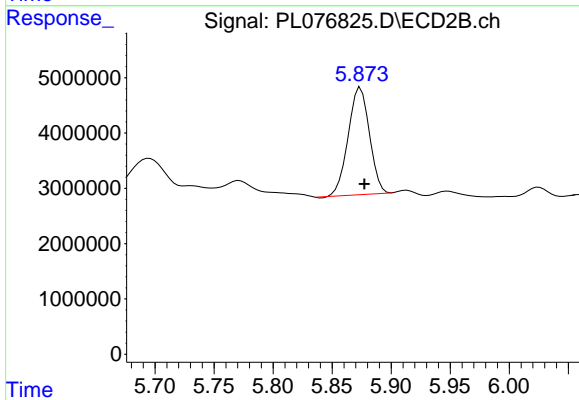
R.T.: 5.627 min
 Delta R.T.: -0.001 min
 Response: 142347261
 Conc: 76.24 ng/ml



#17 4,4'-DDT

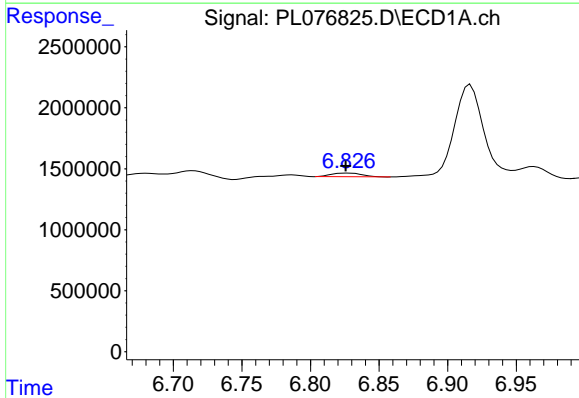
R.T.: 6.917 min
 Delta R.T.: -0.002 min
 Response: 9826885
 Conc: 11.67 ng/ml

Instrument :
 ECD_L
 ClientSampleId :
 RVE-16DL



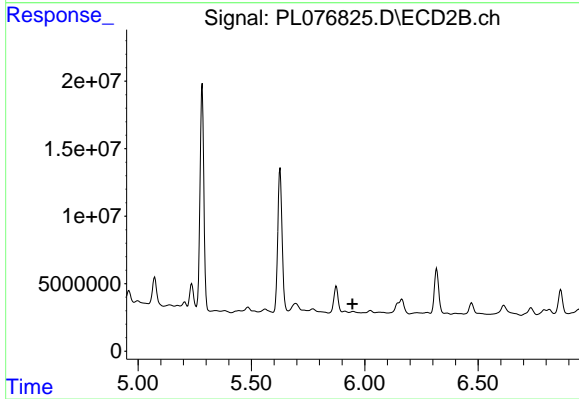
#17 4,4'-DDT

R.T.: 5.874 min
 Delta R.T.: -0.003 min
 Response: 24227416
 Conc: 12.97 ng/ml



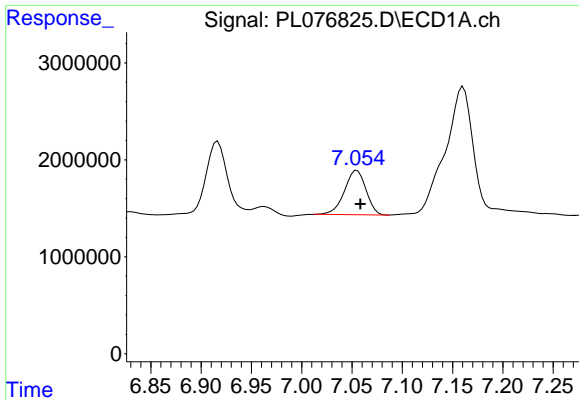
#18 Endrin aldehyde

R.T.: 6.827 min
 Delta R.T.: 0.002 min
 Response: 472487
 Conc: 0.64 ng/ml



#18 Endrin aldehyde

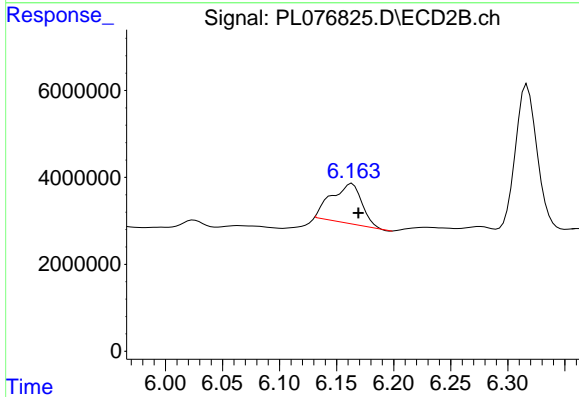
R.T.: 5.948 min
 Delta R.T.: 0.002 min
 Response: -30031
 Conc: N.D.



#19 Endosulfan Sulfate

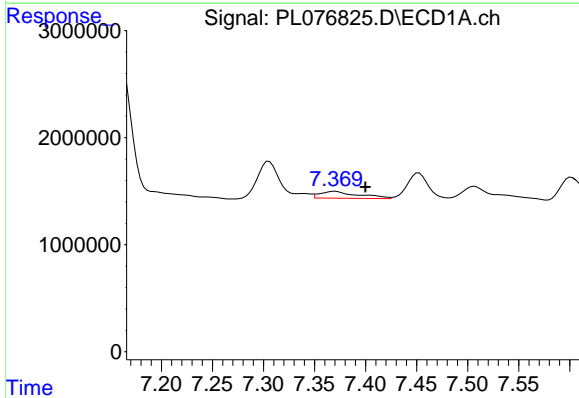
R.T.: 7.055 min
 Delta R.T.: -0.004 min
 Response: 6822881
 Conc: 7.93 ng/ml

Instrument :
 ECD_L
 ClientSampleId :
 RVE-16DL



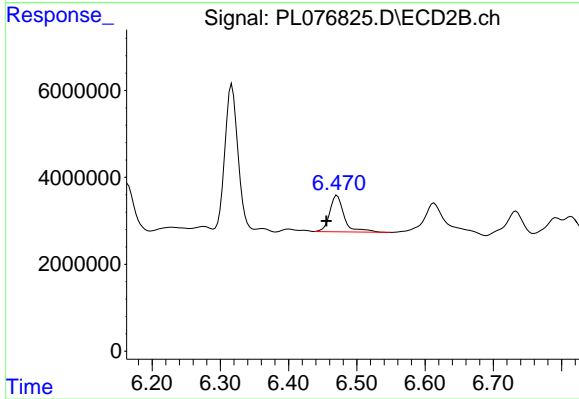
#19 Endosulfan Sulfate

R.T.: 6.164 min
 Delta R.T.: -0.006 min
 Response: 16946802
 Conc: 8.84 ng/ml



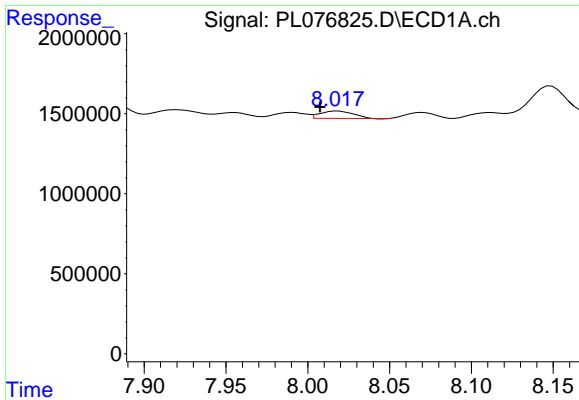
#20 Methoxychlor

R.T.: 7.370 min
 Delta R.T.: -0.030 min
 Response: 1670358
 Conc: 3.47 ng/ml



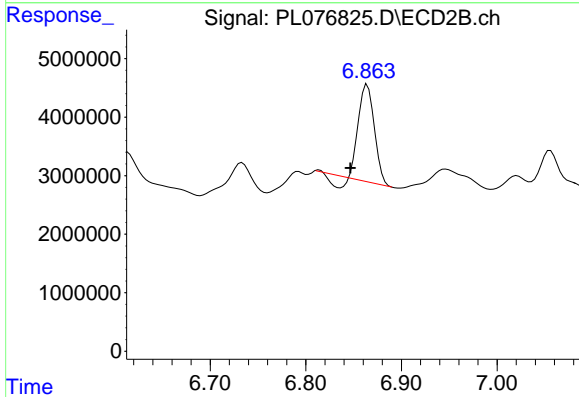
#20 Methoxychlor

R.T.: 6.471 min
 Delta R.T.: 0.016 min
 Response: 12290425
 Conc: 12.04 ng/ml

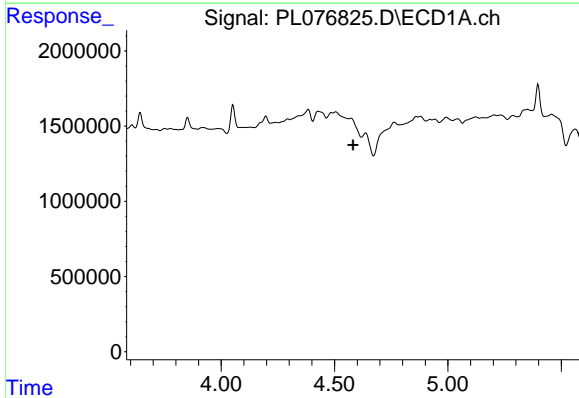


#22 Mirex
 R.T.: 8.018 min
 Delta R.T.: 0.011 min
 Response: 573345
 Conc: 0.78 ng/ml

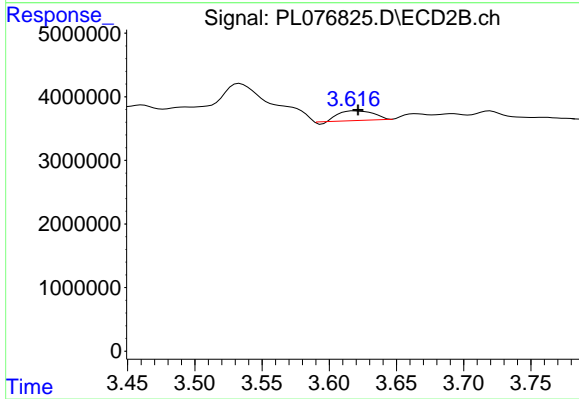
Instrument :
 ECD_L
 ClientSampleId :
 RVE-16DL



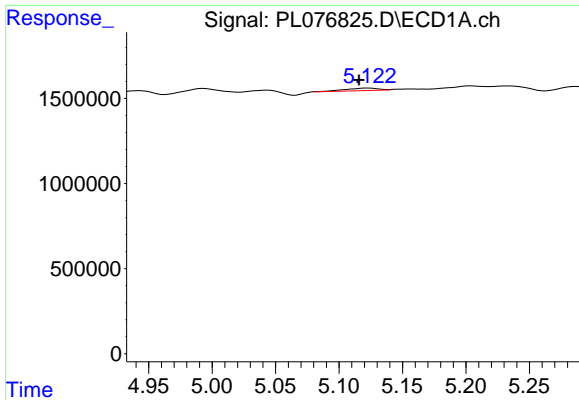
#22 Mirex
 R.T.: 6.864 min
 Delta R.T.: 0.018 min
 Response: 17238098
 Conc: 10.70 ng/ml



#23 Chlordane-1
 R.T.: 0.000 min
 Exp R.T. : 4.581 min
 Response: 0
 Conc: N.D.



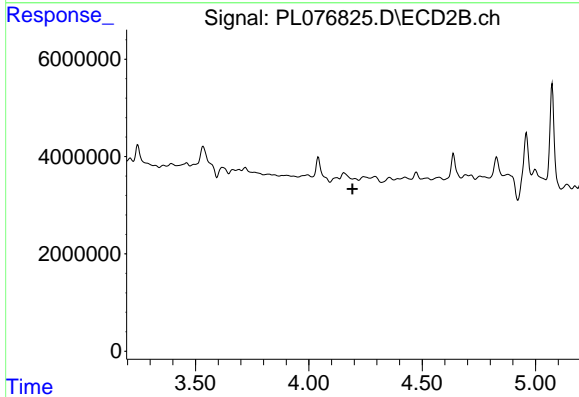
#23 Chlordane-1
 R.T.: 3.619 min
 Delta R.T.: -0.003 min
 Response: 2667258
 Conc: 33.43 ng/ml



#24 Chlordane-2

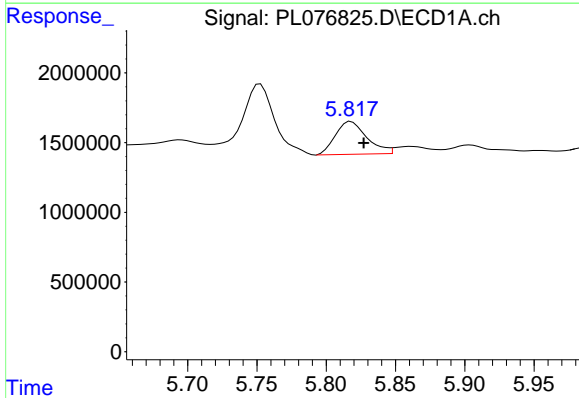
R.T.: 5.123 min
 Delta R.T.: 0.008 min
 Response: 269019
 Conc: 6.46 ng/ml

Instrument :
 ECD_L
 ClientSampleId :
 RVE-16DL



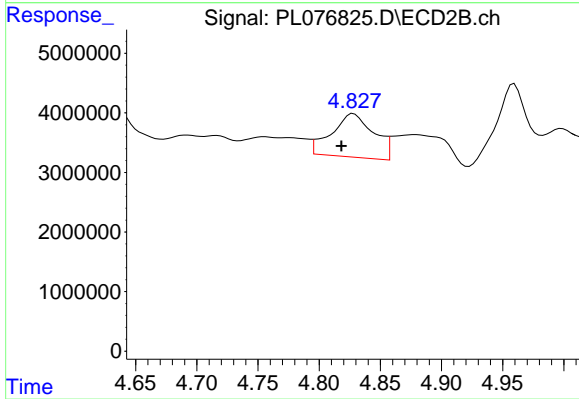
#24 Chlordane-2

R.T.: 0.000 min
 Exp R.T. : 4.193 min
 Response: 0
 Conc: N.D.



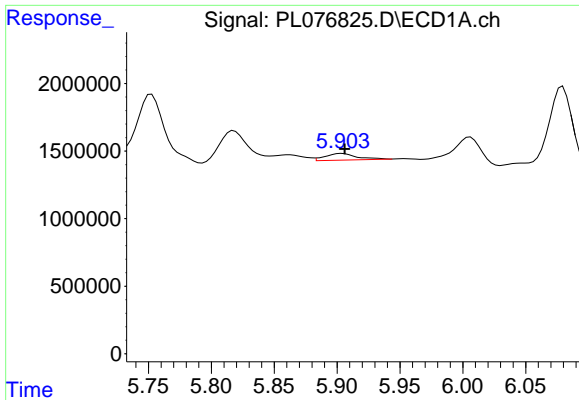
#25 Chlordane-3

R.T.: 5.818 min
 Delta R.T.: -0.009 min
 Response: 3713654
 Conc: 23.00 ng/ml



#25 Chlordane-3

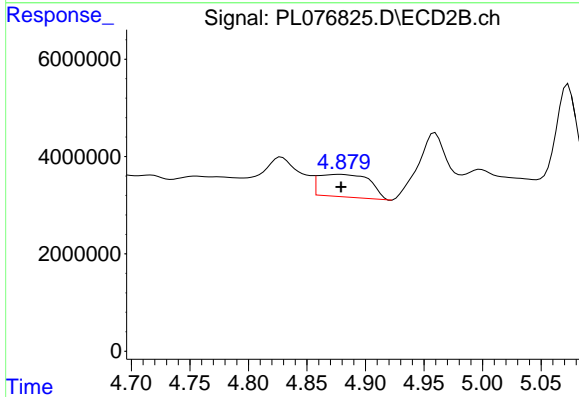
R.T.: 4.828 min
 Delta R.T.: 0.010 min
 Response: 17514393
 Conc: 63.51 ng/ml



#26 Chlordane-4

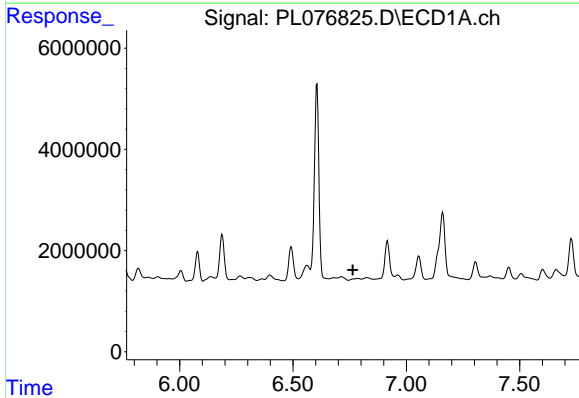
R.T.: 5.904 min
 Delta R.T.: -0.002 min
 Response: 868242
 Conc: 4.42 ng/ml

Instrument :
 ECD_L
 ClientSampleId :
 RVE-16DL



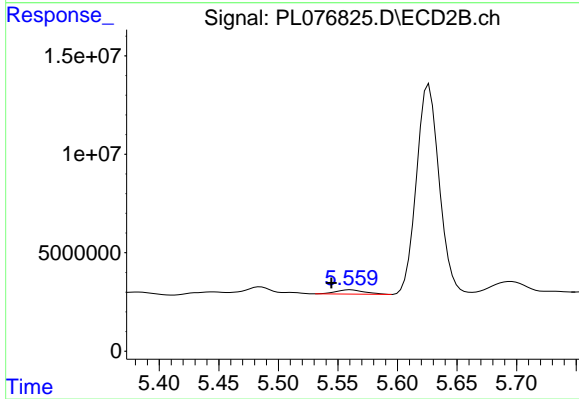
#26 Chlordane-4

R.T.: 4.879 min
 Delta R.T.: 0.000 min
 Response: 14121349
 Conc: 48.95 ng/ml



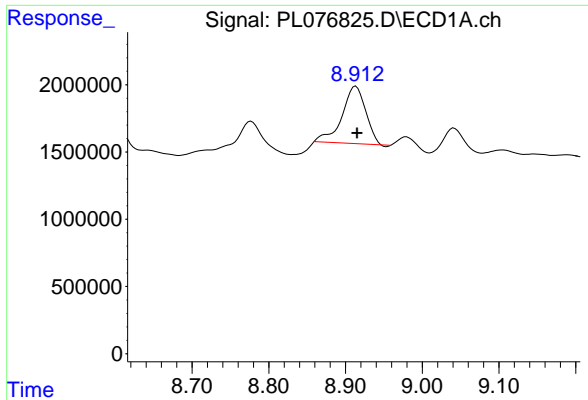
#27 Chlordane-5

R.T.: 6.786 min
 Delta R.T.: 0.022 min
 Response: -222471
 Conc: N.D.



#27 Chlordane-5

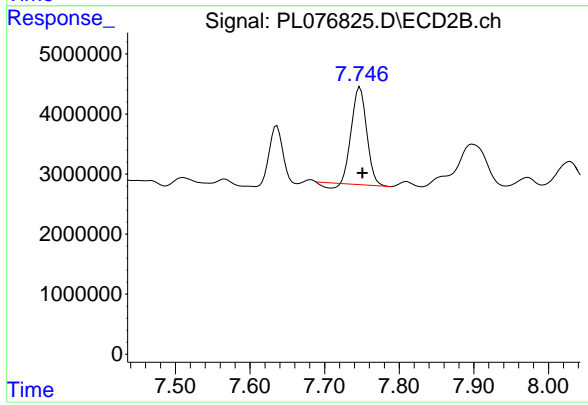
R.T.: 5.561 min
 Delta R.T.: 0.016 min
 Response: 3668883
 Conc: 48.07 ng/ml



#28 Decachlorobiphenyl

R.T.: 8.913 min
Delta R.T.: -0.002 min
Response: 9109525
Conc: 11.46 ng/ml

Instrument :
ECD_L
ClientSampleId :
RVE-16DL



#28 Decachlorobiphenyl

R.T.: 7.747 min
Delta R.T.: -0.003 min
Response: 22333397
Conc: 11.62 ng/ml