

Data Path : Z:\pestpcbsrv\HPCHEM1\ECD\_L\Data\PL080218\  
 Data File : PL038843.D  
 Signal(s) : Signal #1: ECD1A.ch Signal #2: ECD2B.ch  
 Acq On : 02 Aug 2018 21:46  
 Operator : AJ\SJ  
 Sample : J4285-20  
 Misc :  
 ALS Vial : 35 Sample Multiplier: 1

Instrument :  
 ECD\_L  
 ClientSampleId :

Integration File signal 1: autoint1.e  
 Integration File signal 2: autoint2.e  
 Quant Time: Aug 03 01:04:54 2018  
 Quant Method : Z:\PESTPCBSRV\HPCHEM1\ECD\_L\methods\PL071318.M  
 Quant Title : GC Extractables  
 QLast Update : Sat Jul 14 00:12:12 2018  
 Response via : Initial Calibration  
 Integrator: ChemStation

Volume Inj. : 2 µl  
 Signal #1 Phase : ZB-MR2 Signal #2 Phase: ZB-MR2  
 Signal #1 Info : 30M x 0.32mm x0.5 Signal #2 Info : 30M x 0.32mm x0.25µm

	Compound	RT#1	RT#2	Resp#1	Resp#2	ng/ml	ng/ml
-----							
System Monitoring Compounds							
1)	SA Tetrachlo...	3.326	3.929	137.0E6	55268172	18.401	21.055
28)	SA Decachlor...	7.992	8.935	108.4E6	43863351	14.288	17.944 #
Target Compounds							
2)	A alpha-BHC	0.000	4.319	0	1985705	N.D.	0.513 #
3)	MA gamma-BHC...	0.000	4.562f	0	983335	N.D.	0.272 #
4)	MA Heptachlor	0.000	5.105	0	412871	N.D.	0.129 #
5)	MB Aldrin	0.000	5.388	0	3874304	N.D.	1.255 #
6)	B beta-BHC	4.240f	0.000	15085227	0	3.196	N.D. #
7)	B delta-BHC	0.000	4.958	0	6440927	N.D.	1.942 #
8)	B Heptachlo...	4.927f	5.801	5470908	639392	0.580	0.225 #
9)	A Endosulfan I	0.000	6.083f	0	102535	N.D.	0.040 #
10)	B gamma-Chl...	0.000	6.083f	0	102535	N.D.	0.035 #
11)	B alpha-Chl...	0.000	6.083	0	102535	N.D.	0.036 #
14)	MA Endrin	0.000	6.622	0	532066	N.D.	0.223 #
15)	B Endosulfa...	0.000	6.828	0	696247	N.D.	0.290 #
16)	A 4,4'-DDD	0.000	6.674f	0	559533	N.D.	0.261 #
17)	MA 4,4'-DDT	0.000	7.017	0	678568	N.D.	0.318 #
18)	B Endrin al...	0.000	6.929	0	63783	N.D.	0.033 #
20)	A Methoxychlor	0.000	7.423f	0	5070183	N.D.	4.453 #
23)	Chlordane-1	0.000	4.896	0	1105190	N.D.	9.537 #
24)	Chlordane-2	0.000	5.388	0	3874304	N.D.	32.353 #
26)	Chlordane-4	0.000	6.083	0	102535	N.D.	0.209 #
27)	Chlordane-5	0.000	6.929	0	63783	N.D.	0.712 #

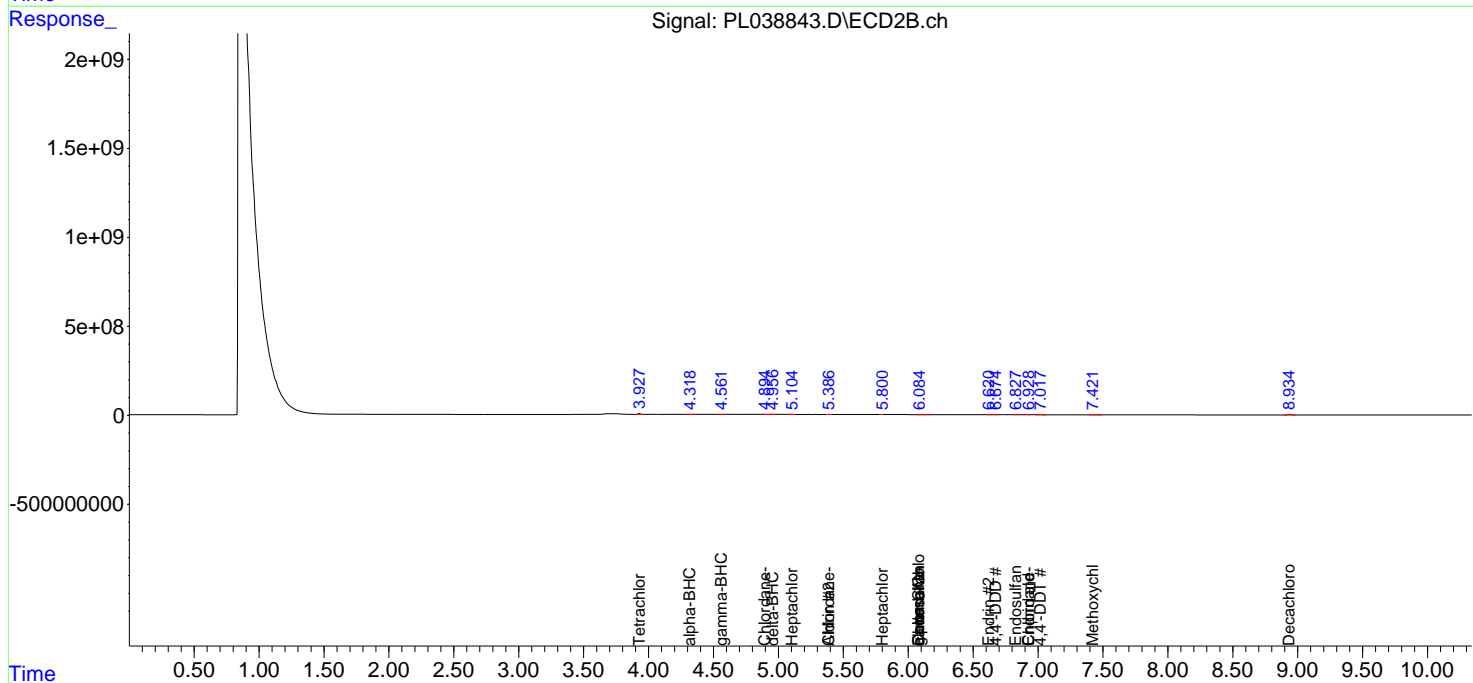
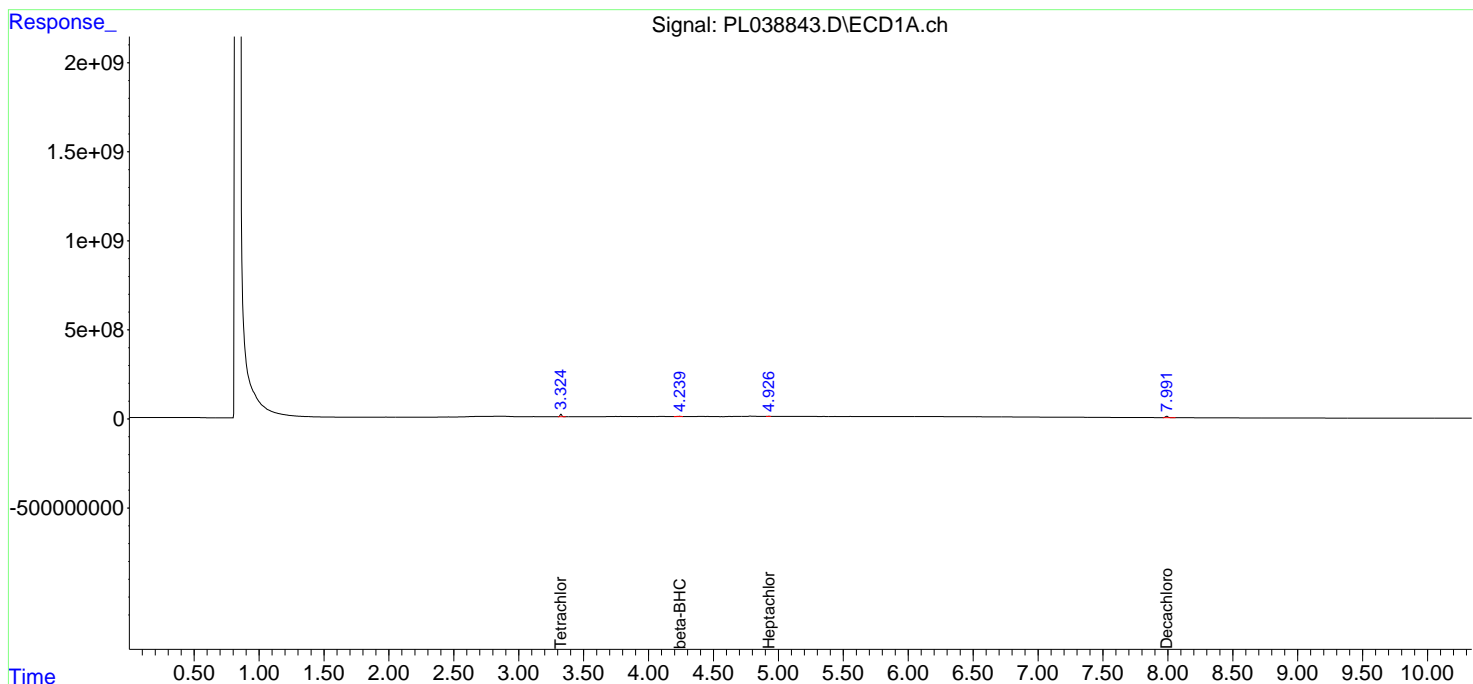
(f)=RT Delta > 1/2 Window (#)=Amounts differ by > 25% (m)=manual int.

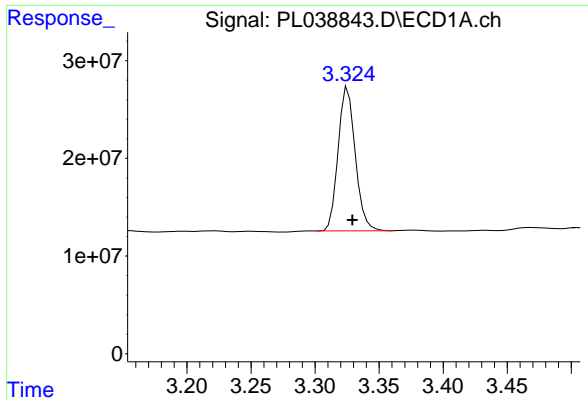
Data Path : Z:\pestpcbsrv\HPCHEM1\ECD\_L\Data\PL080218\  
 Data File : PL038843.D  
 Signal(s) : Signal #1: ECD1A.ch Signal #2: ECD2B.ch  
 Acq On : 02 Aug 2018 21:46  
 Operator : AJ\SJ  
 Sample : J4285-20  
 Misc :  
 ALS Vial : 35 Sample Multiplier: 1

Instrument :  
 ECD\_L  
 ClientSampled :

Integration File signal 1: autoint1.e  
 Integration File signal 2: autoint2.e  
 Quant Time: Aug 03 01:04:54 2018  
 Quant Method : Z:\PESTPCBSRV\HPCHEM1\ECD\_L\methods\PL071318.M  
 Quant Title : GC Extractables  
 QLast Update : Sat Jul 14 00:12:12 2018  
 Response via : Initial Calibration  
 Integrator: ChemStation

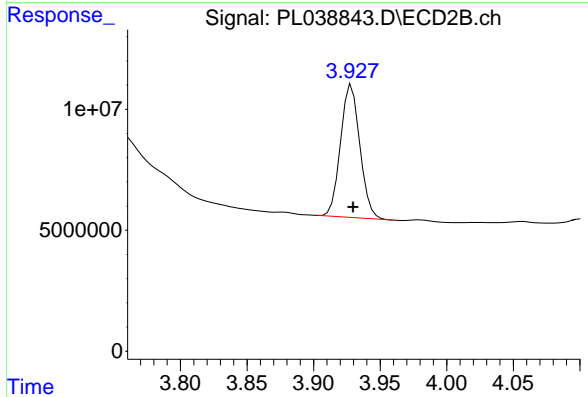
Volume Inj. : 2 µl  
 Signal #1 Phase : ZB-MR1 Signal #2 Phase: ZB-MR2  
 Signal #1 Info : 30M x 0.32mm x0.5 Signal #2 Info : 30M x 0.32mm x0.25µm



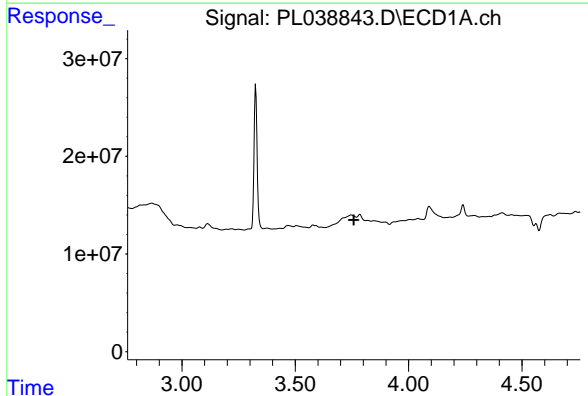


#1 Tetrachloro-m-xylene  
 R.T.: 3.326 min  
 Delta R.T.: -0.003 min  
 Response: 137021639  
 Conc: 18.40 ng/ml

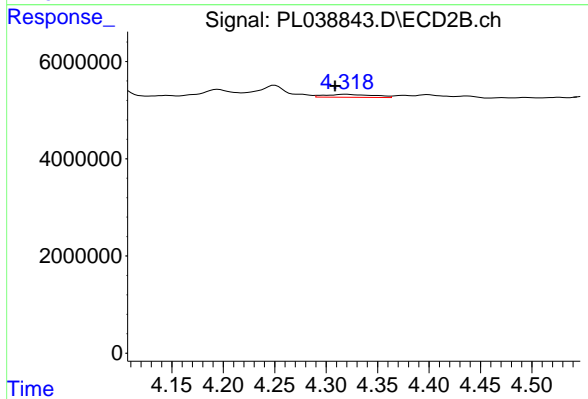
Instrument :  
 ECD\_L  
 ClientSampled :



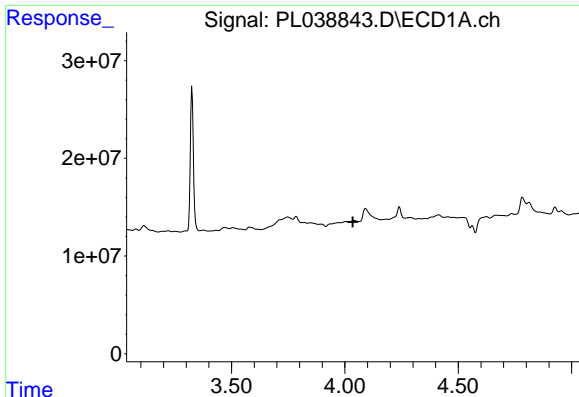
#1 Tetrachloro-m-xylene  
 R.T.: 3.929 min  
 Delta R.T.: -0.001 min  
 Response: 55268172  
 Conc: 21.06 ng/ml



#2 alpha-BHC  
 R.T.: 0.000 min  
 Exp R.T. : 3.758 min  
 Response: 0  
 Conc: N.D.

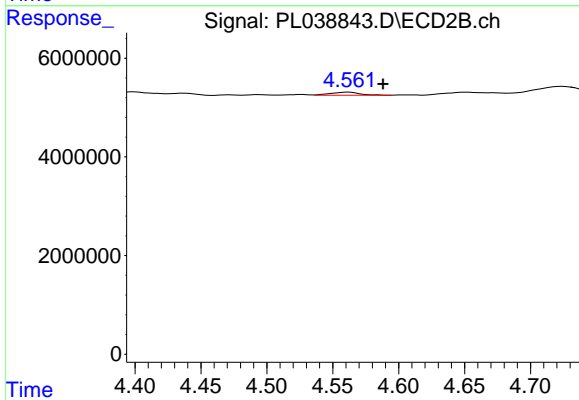


#2 alpha-BHC  
 R.T.: 4.319 min  
 Delta R.T.: 0.011 min  
 Response: 1985705  
 Conc: 0.51 ng/ml

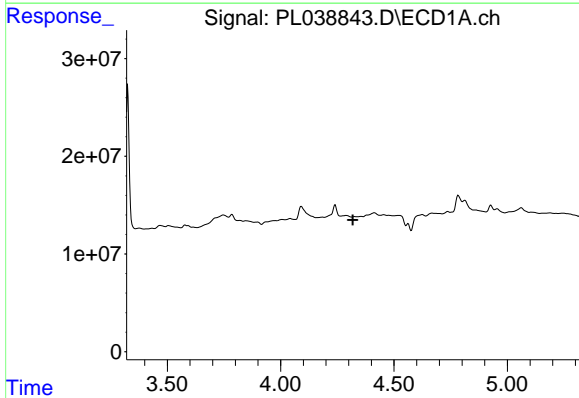


#3 gamma-BHC (Lindane)  
 R.T.: 0.000 min  
 Exp R.T. : 4.035 min  
 Response: 0  
 Conc: N.D.

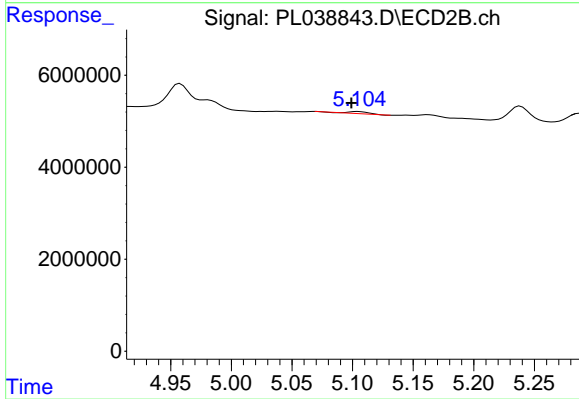
Instrument :  
 ECD\_L  
 ClientSampleId :



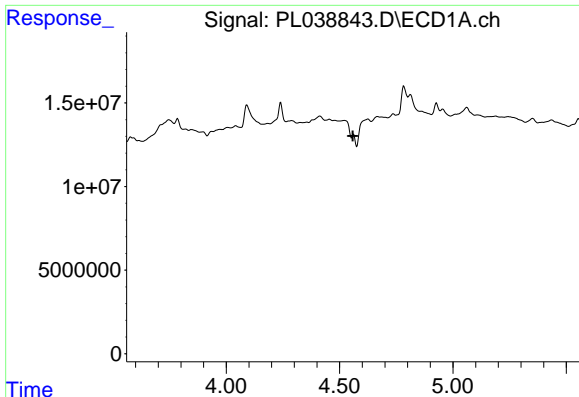
#3 gamma-BHC (Lindane)  
 R.T.: 4.562 min  
 Delta R.T.: -0.026 min  
 Response: 983335  
 Conc: 0.27 ng/ml



#4 Heptachlor  
 R.T.: 0.000 min  
 Exp R.T. : 4.319 min  
 Response: 0  
 Conc: N.D.

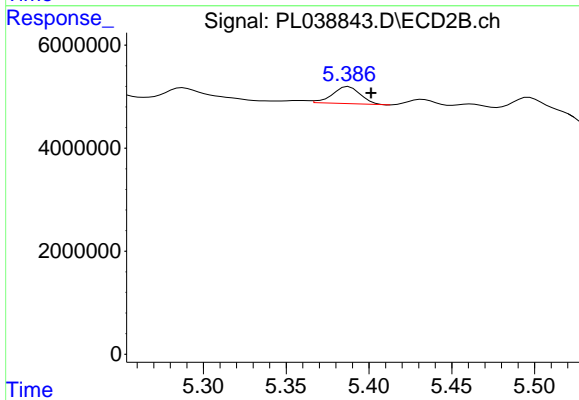


#4 Heptachlor  
 R.T.: 5.105 min  
 Delta R.T.: 0.006 min  
 Response: 412871  
 Conc: 0.13 ng/ml

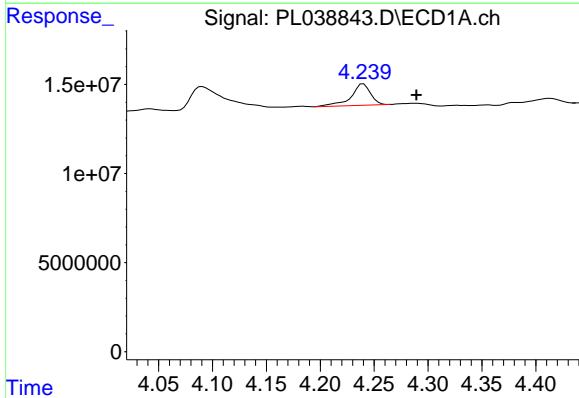


#5 Aldrin  
 R.T.: 0.000 min  
 Exp R.T.: 4.558 min  
 Response: 0  
 Conc: N.D.

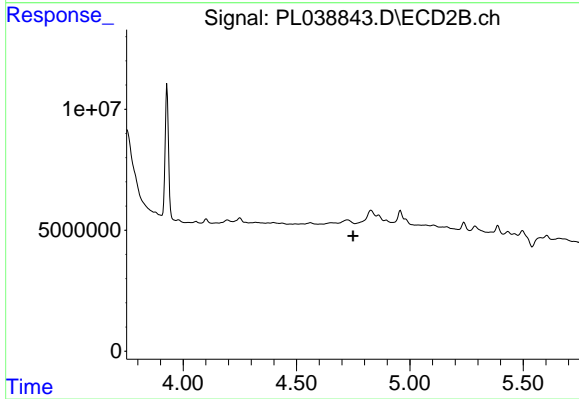
Instrument :  
 ECD\_L  
 ClientSampleId :



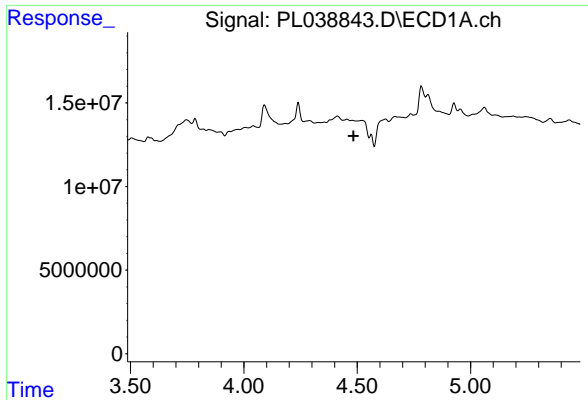
#5 Aldrin  
 R.T.: 5.388 min  
 Delta R.T.: -0.013 min  
 Response: 3874304  
 Conc: 1.26 ng/ml



#6 beta-BHC  
 R.T.: 4.240 min  
 Delta R.T.: -0.049 min  
 Response: 15085227  
 Conc: 3.20 ng/ml



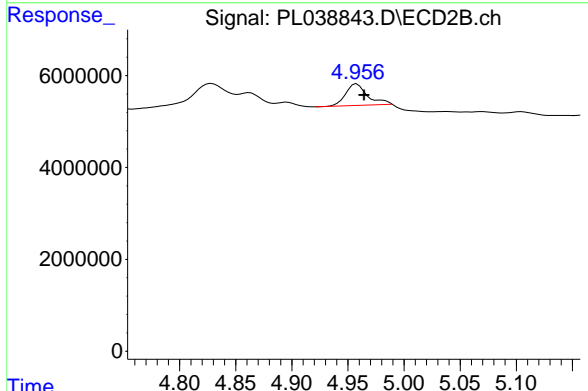
#6 beta-BHC  
 R.T.: 0.000 min  
 Exp R.T.: 4.750 min  
 Response: 0  
 Conc: N.D.



#7 delta-BHC

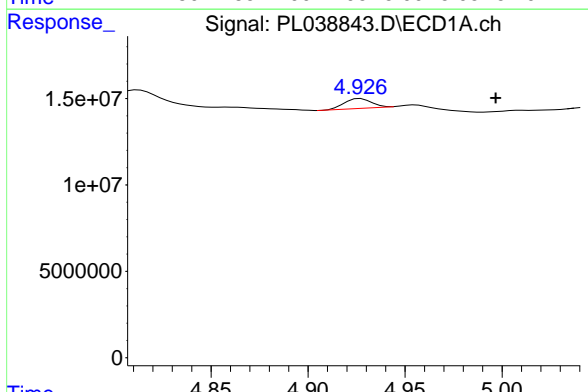
R.T.: 0.000 min  
 Exp R.T.: 4.484 min  
 Response: 0  
 Conc: N.D.

Instrument :  
 ECD\_L  
 ClientSampled :



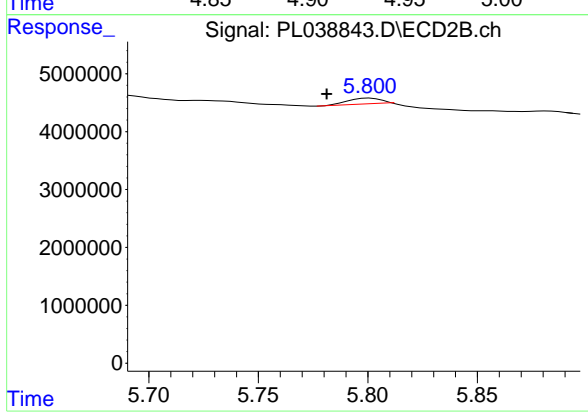
#7 delta-BHC

R.T.: 4.958 min  
 Delta R.T.: -0.006 min  
 Response: 6440927  
 Conc: 1.94 ng/ml



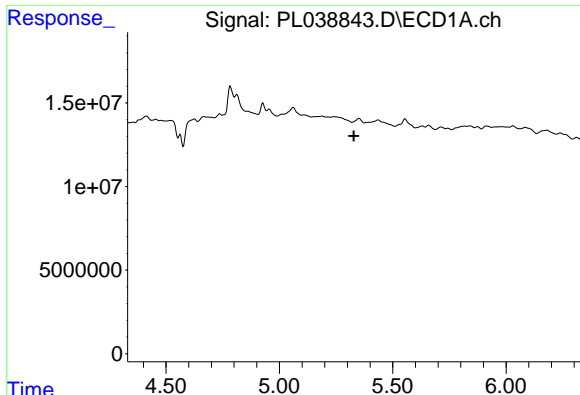
#8 Heptachlor epoxide

R.T.: 4.927 min  
 Delta R.T.: -0.070 min  
 Response: 5470908  
 Conc: 0.58 ng/ml



#8 Heptachlor epoxide

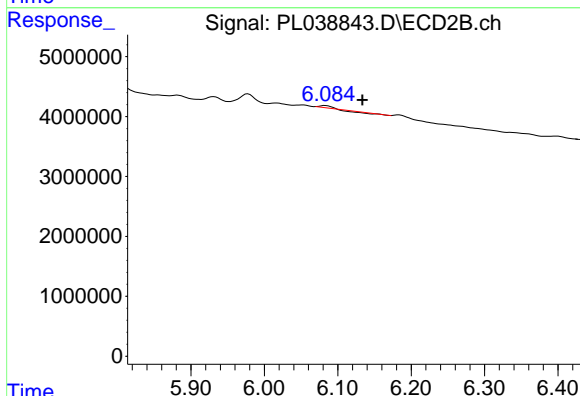
R.T.: 5.801 min  
 Delta R.T.: 0.020 min  
 Response: 639392  
 Conc: 0.22 ng/ml



#9 Endosulfan I

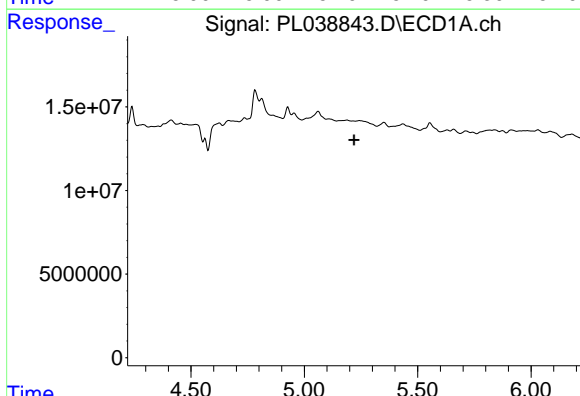
R.T.: 0.000 min  
 Exp R.T. : 5.328 min  
 Response: 0  
 Conc: N.D.

Instrument :  
 ECD\_L  
 ClientSampleId :



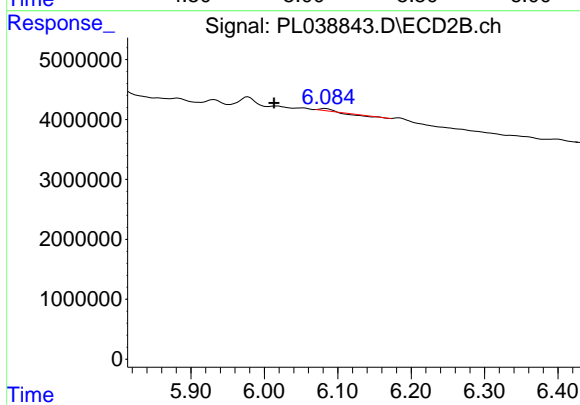
#9 Endosulfan I

R.T.: 6.083 min  
 Delta R.T.: -0.051 min  
 Response: 102535  
 Conc: 0.04 ng/ml



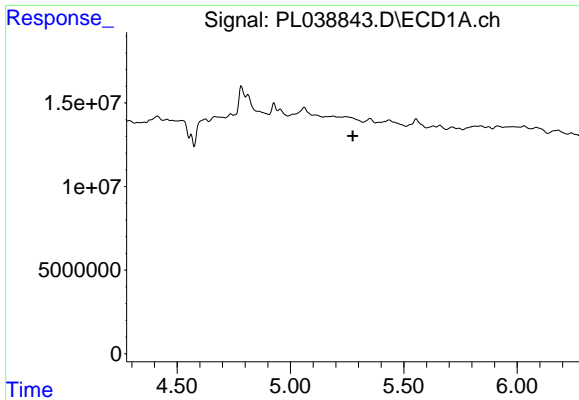
#10 gamma-Chlordane

R.T.: 0.000 min  
 Exp R.T. : 5.219 min  
 Response: 0  
 Conc: N.D.



#10 gamma-Chlordane

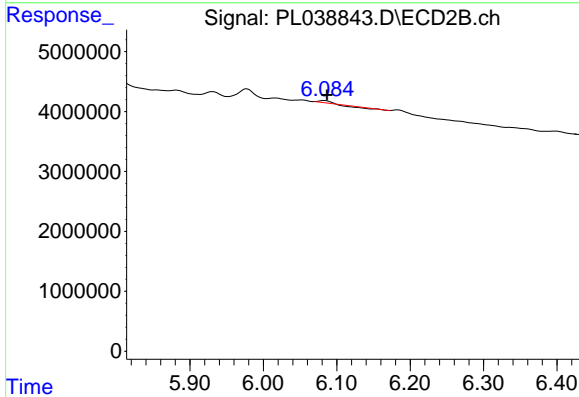
R.T.: 6.083 min  
 Delta R.T.: 0.070 min  
 Response: 102535  
 Conc: 0.04 ng/ml



#11 alpha-Chlordane

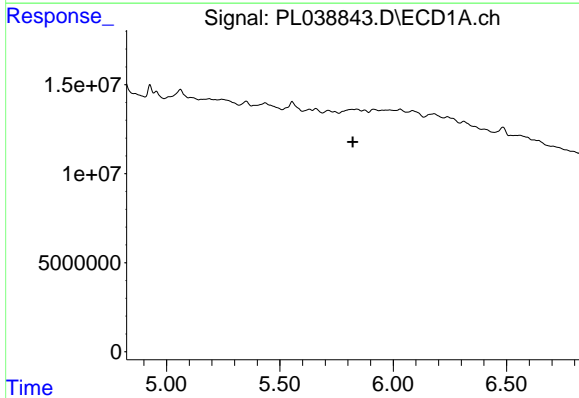
R.T.: 0.000 min  
 Exp R.T. : 5.275 min  
 Response: 0  
 Conc: N.D.

Instrument :  
 ECD\_L  
 ClientSampleId :



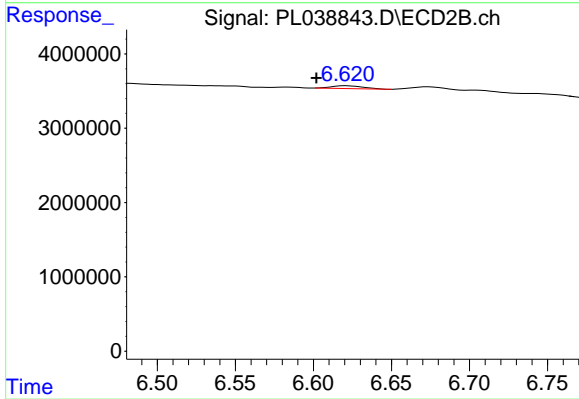
#11 alpha-Chlordane

R.T.: 6.083 min  
 Delta R.T.: -0.004 min  
 Response: 102535  
 Conc: 0.04 ng/ml



#14 Endrin

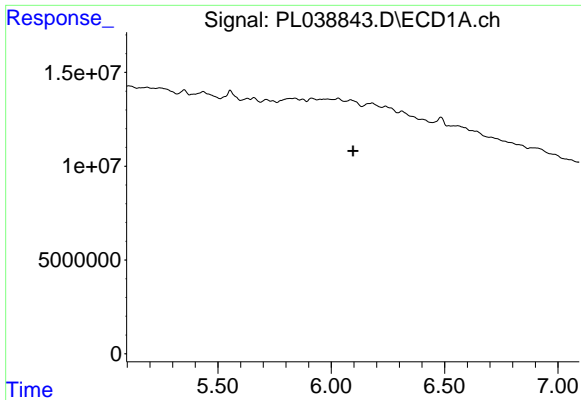
R.T.: 0.000 min  
 Exp R.T. : 5.821 min  
 Response: 0  
 Conc: N.D.



#14 Endrin

R.T.: 6.622 min  
 Delta R.T.: 0.020 min  
 Response: 532066  
 Conc: 0.22 ng/ml

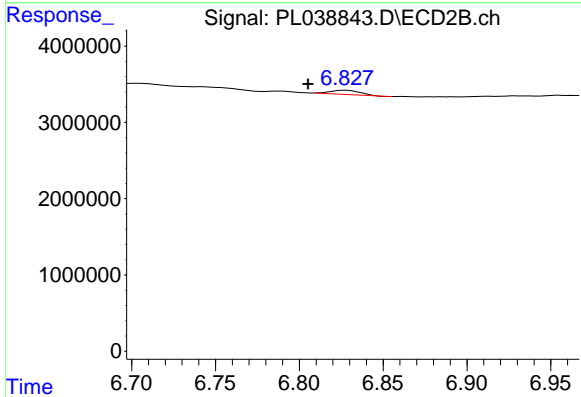




#15 Endosulfan II

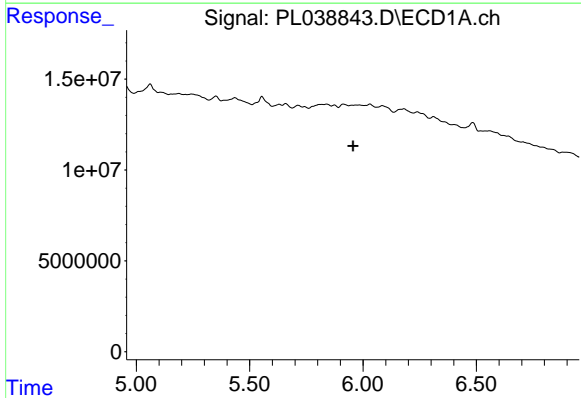
R.T.: 0.000 min  
 Exp R.T.: 6.096 min  
 Response: 0  
 Conc: N.D.

Instrument :  
 ECD\_L  
 ClientSampled :



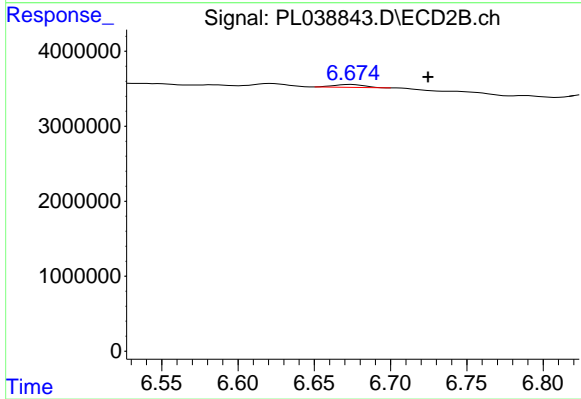
#15 Endosulfan II

R.T.: 6.828 min  
 Delta R.T.: 0.022 min  
 Response: 696247  
 Conc: 0.29 ng/ml



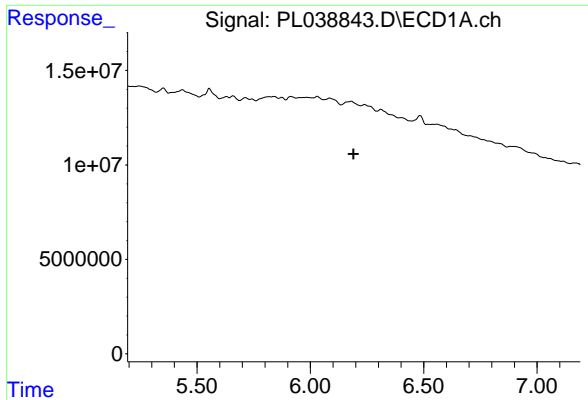
#16 4,4'-DDD

R.T.: 0.000 min  
 Exp R.T.: 5.956 min  
 Response: 0  
 Conc: N.D.



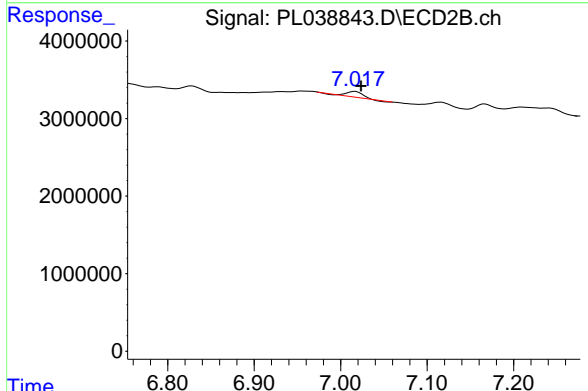
#16 4,4'-DDD

R.T.: 6.674 min  
 Delta R.T.: -0.050 min  
 Response: 559533  
 Conc: 0.26 ng/ml

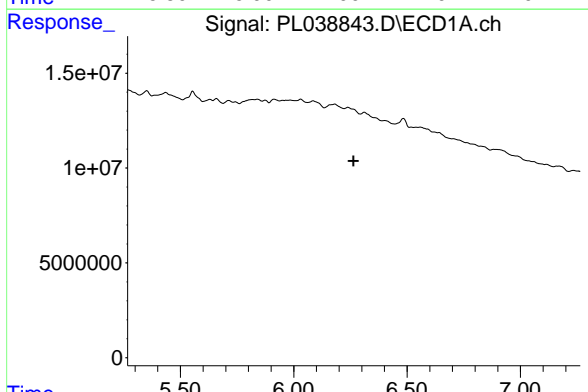


#17 4,4'-DDT  
 R.T.: 0.000 min  
 Exp R.T.: 6.190 min  
 Response: 0  
 Conc: N.D.

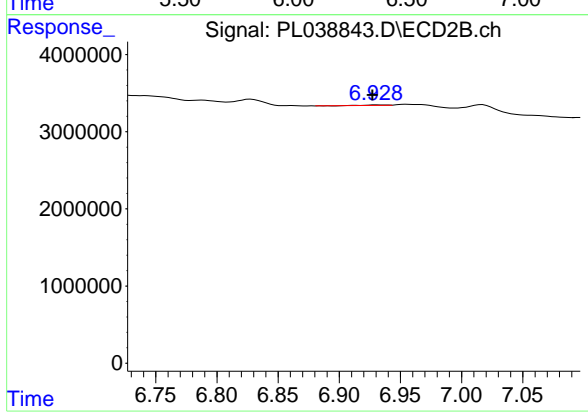
Instrument :  
 ECD\_L  
 ClientSampled :



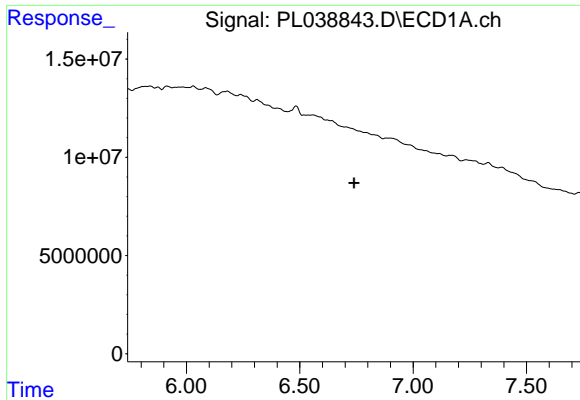
#17 4,4'-DDT  
 R.T.: 7.017 min  
 Delta R.T.: -0.007 min  
 Response: 678568  
 Conc: 0.32 ng/ml



#18 Endrin aldehyde  
 R.T.: 0.000 min  
 Exp R.T.: 6.264 min  
 Response: 0  
 Conc: N.D.



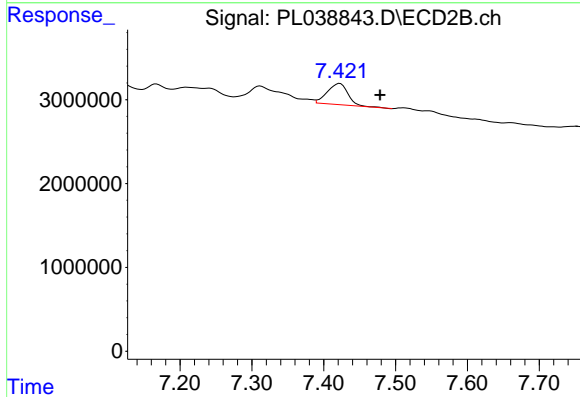
#18 Endrin aldehyde  
 R.T.: 6.929 min  
 Delta R.T.: 0.002 min  
 Response: 63783  
 Conc: 0.03 ng/ml



#20 Methoxychlor

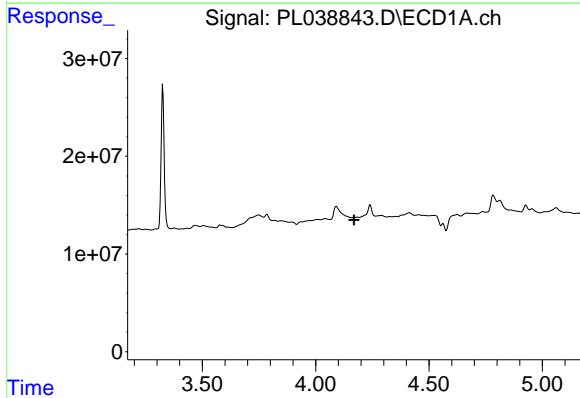
R.T.: 0.000 min  
 Exp R.T. : 6.739 min  
 Response: 0  
 Conc: N.D.

Instrument :  
 ECD\_L  
 ClientSampleId :



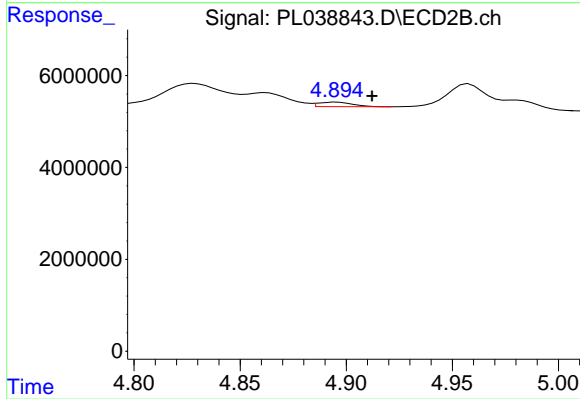
#20 Methoxychlor

R.T.: 7.423 min  
 Delta R.T.: -0.056 min  
 Response: 5070183  
 Conc: 4.45 ng/ml



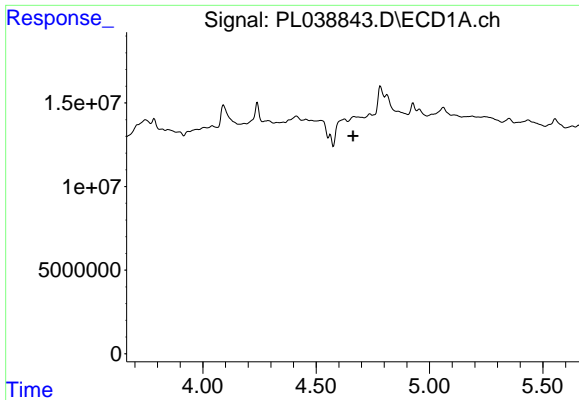
#23 Chlordane-1

R.T.: 0.000 min  
 Exp R.T. : 4.169 min  
 Response: 0  
 Conc: N.D.



#23 Chlordane-1

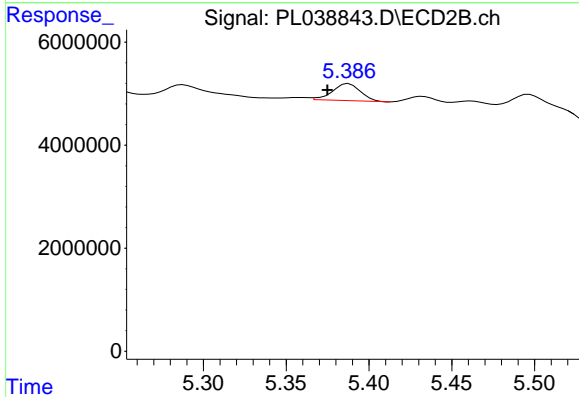
R.T.: 4.896 min  
 Delta R.T.: -0.016 min  
 Response: 1105190  
 Conc: 9.54 ng/ml



#24 Chlordane-2

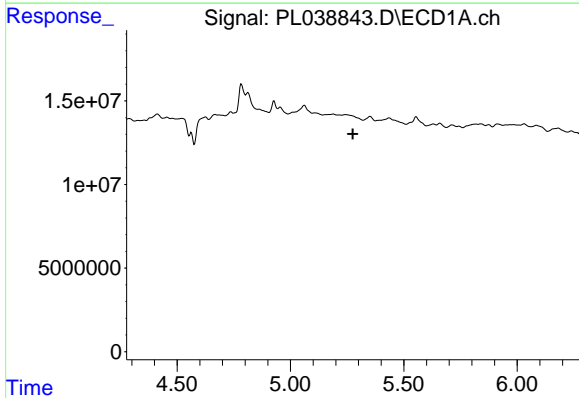
R.T.: 0.000 min  
 Exp R.T. : 4.663 min  
 Response: 0  
 Conc: N.D.

Instrument :  
 ECD\_L  
 ClientSampleId :



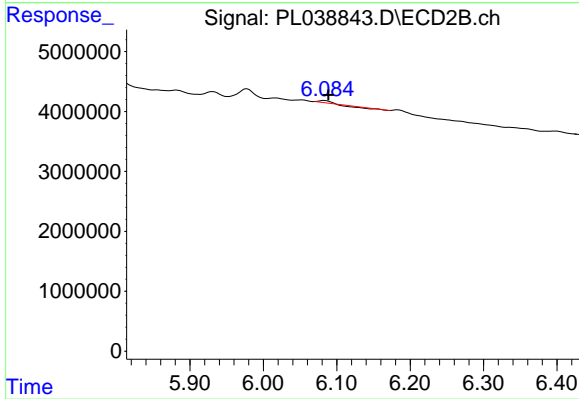
#24 Chlordane-2

R.T.: 5.388 min  
 Delta R.T.: 0.013 min  
 Response: 3874304  
 Conc: 32.35 ng/ml



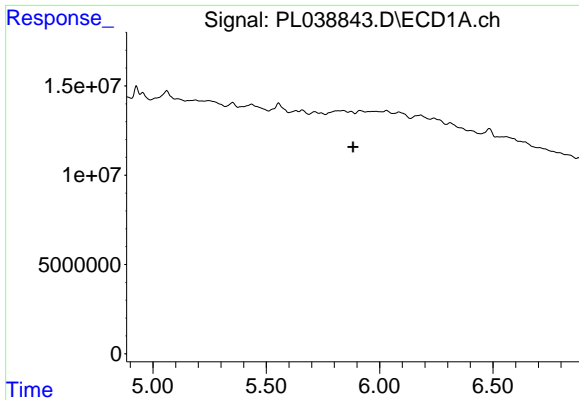
#26 Chlordane-4

R.T.: 0.000 min  
 Exp R.T. : 5.275 min  
 Response: 0  
 Conc: N.D.



#26 Chlordane-4

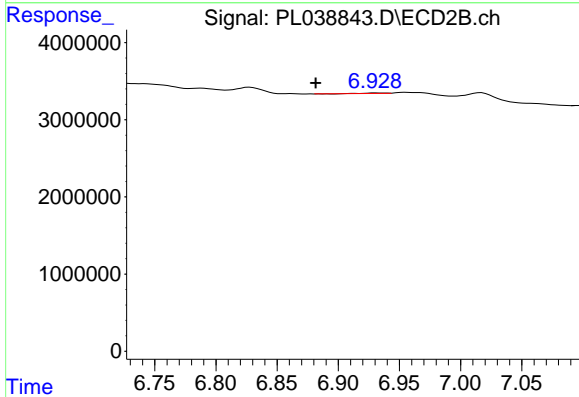
R.T.: 6.083 min  
 Delta R.T.: -0.006 min  
 Response: 102535  
 Conc: 0.21 ng/ml



#27 Chlordane-5

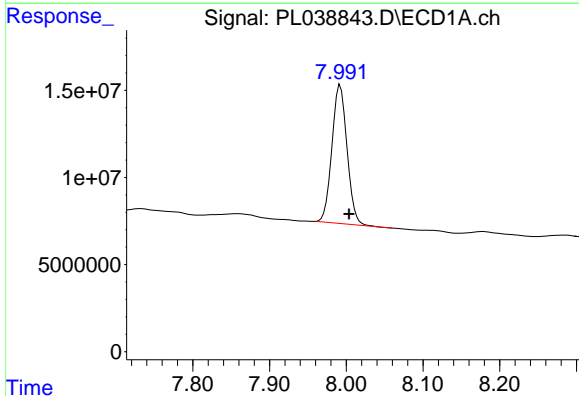
R.T.: 0.000 min  
 Exp R.T.: 5.883 min  
 Response: 0  
 Conc: N.D.

Instrument :  
 ECD\_L  
 ClientSampled :



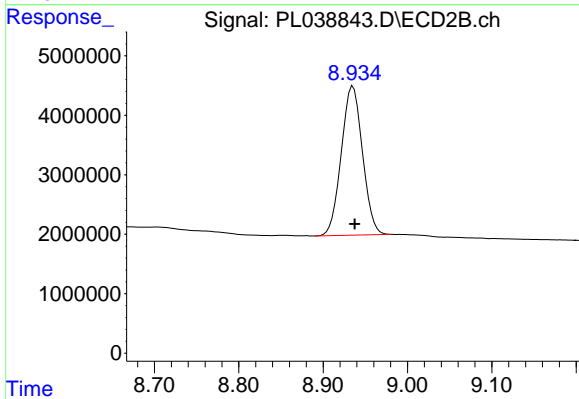
#27 Chlordane-5

R.T.: 6.929 min  
 Delta R.T.: 0.048 min  
 Response: 63783  
 Conc: 0.71 ng/ml



#28 Decachlorobiphenyl

R.T.: 7.992 min  
 Delta R.T.: -0.011 min  
 Response: 108390506  
 Conc: 14.29 ng/ml



#28 Decachlorobiphenyl

R.T.: 8.935 min  
 Delta R.T.: -0.002 min  
 Response: 43863351  
 Conc: 17.94 ng/ml