

Data Path : Z:\pestpcbsrv\HPCHEM1\ECD\_S\Data\PS080218\  
 Data File : PS001354.D  
 Signal(s) : Signal #1: ECD1A.ch Signal #2: ECD2B.ch  
 Acq On : 02 Aug 2018 10:59  
 Operator : UA  
 Sample : HEXANE  
 Misc :  
 ALS Vial : 1 Sample Multiplier: 1

Instrument :  
 ECD\_L  
 ClientSampleId :

Integration File signal 1: autoint1.e  
 Integration File signal 2: autoint2.e  
 Quant Time: Aug 03 06:34:47 2018  
 Quant Method : Z:\pestpcbsrv\HPCHEM1\ECD\_S\Method\PS072118.M  
 Quant Title : 8080.M  
 QLast Update : Sat Jul 21 01:18:58 2018  
 Response via : Initial Calibration  
 Integrator: ChemStation

Volume Inj. : 2 µl  
 Signal #1 Phase : Rtx-CLPesticides Signal #2 Phase: Rtx-CLPesticides2  
 Signal #1 Info : 30M x 0.32mm x0.5 Signal #2 Info : 30M x 0.32mm x 0.25µm

Compound	RT#1	RT#2	Resp#1	Resp#2	ng/ml	ng/ml
----------	------	------	--------	--------	-------	-------

System Monitoring Compounds

Target Compounds

1) T	Dalapon	3.069	0.000	2837575	0	11.967	N.D.	#
------	---------	-------	-------	---------	---	--------	------	---

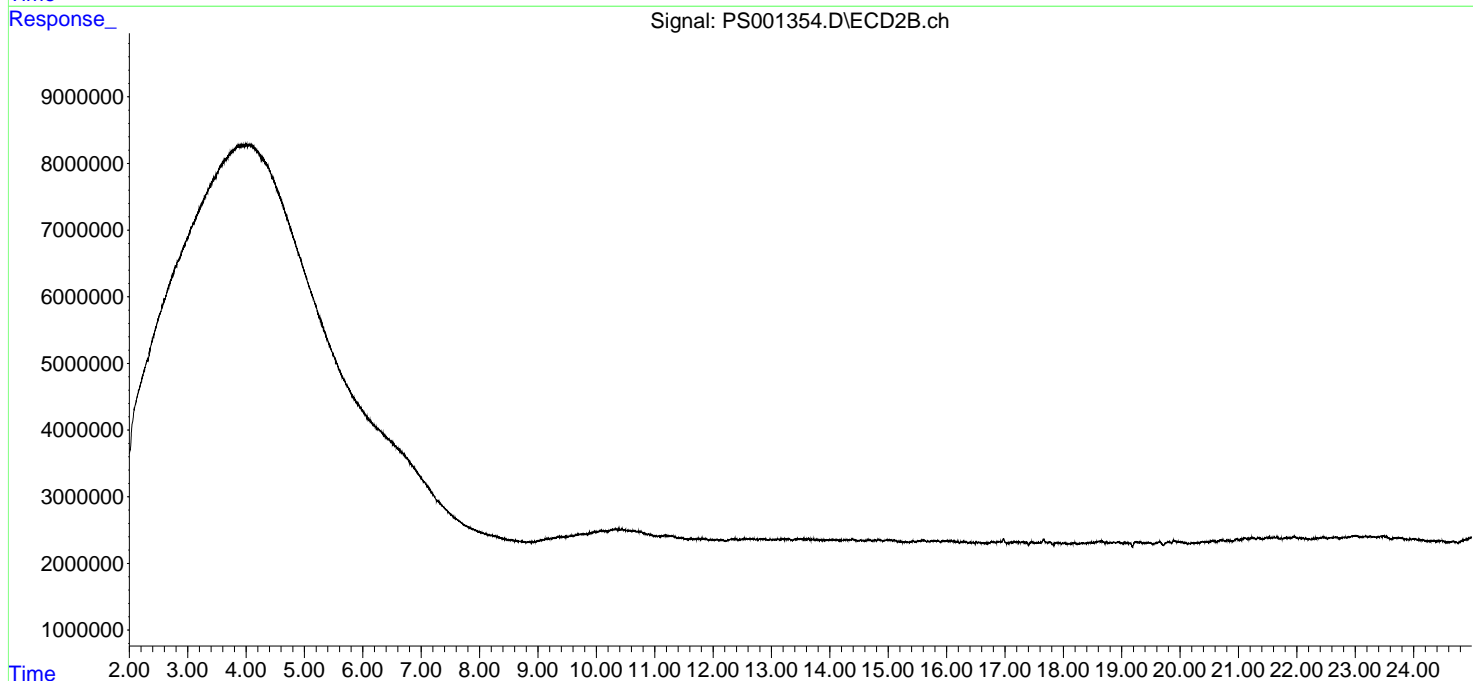
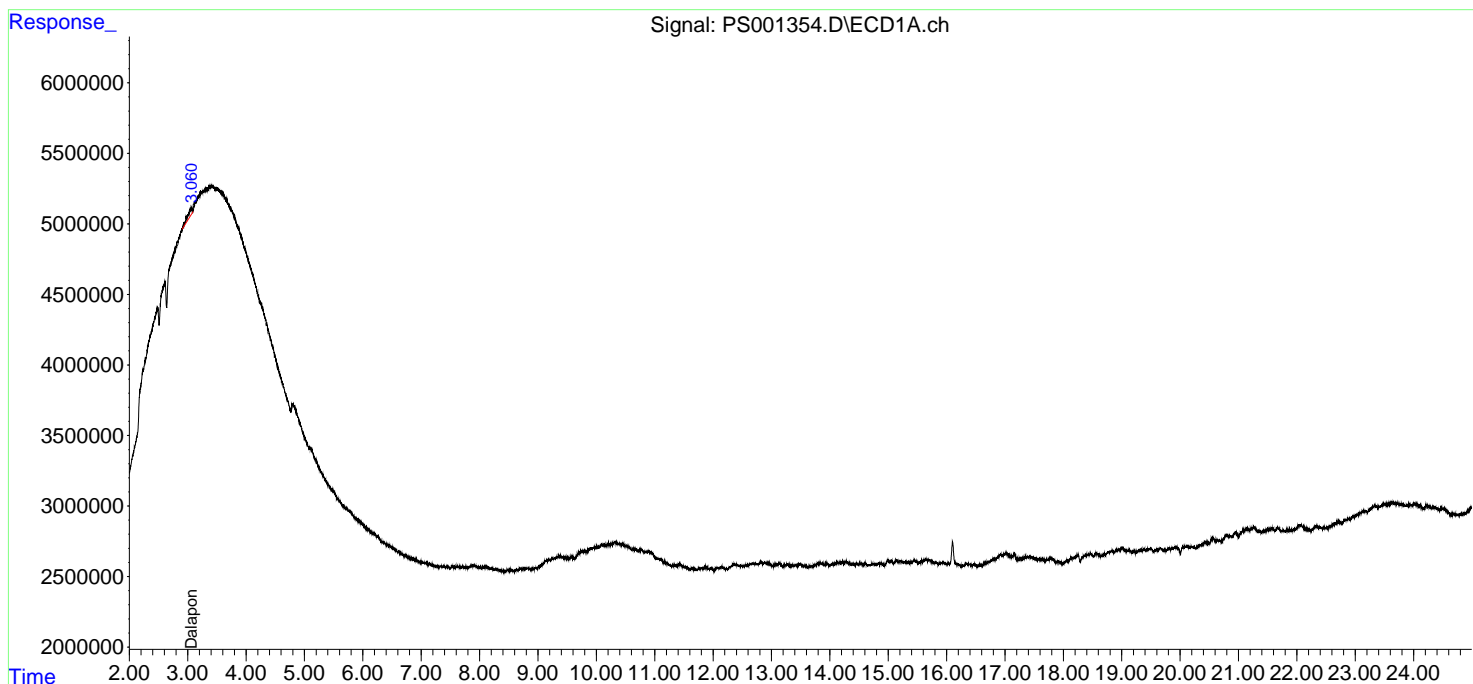
(f)=RT Delta > 1/2 Window (#)=Amounts differ by > 25% (m)=manual int.

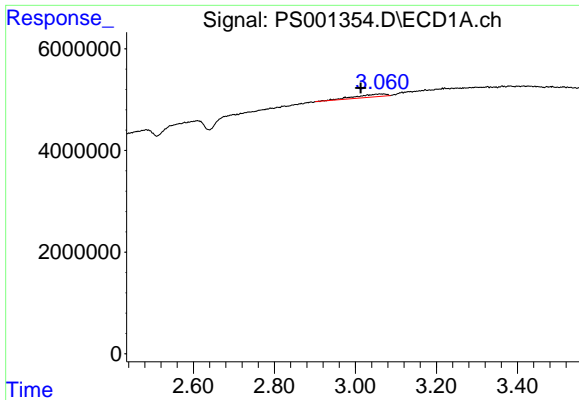
Data Path : Z:\pestpcbsrv\HPCHEM1\ECD\_S\Data\PS080218\  
 Data File : PS001354.D  
 Signal(s) : Signal #1: ECD1A.ch Signal #2: ECD2B.ch  
 Acq On : 02 Aug 2018 10:59  
 Operator : UA  
 Sample : HEXANE  
 Misc :  
 ALS Vial : 1 Sample Multiplier: 1

Instrument :  
 ECD\_L  
 ClientSampleId :

Integration File signal 1: autoint1.e  
 Integration File signal 2: autoint2.e  
 Quant Time: Aug 03 06:34:47 2018  
 Quant Method : Z:\pestpcbsrv\HPCHEM1\ECD\_S\Method\PS072118.M  
 Quant Title : 8080.M  
 QLast Update : Sat Jul 21 01:18:58 2018  
 Response via : Initial Calibration  
 Integrator: ChemStation

Volume Inj. : 2 µl  
 Signal #1 Phase : Rtx-CLPesticides Signal #2 Phase: Rtx-CLPesticides2  
 Signal #1 Info : 30M x 0.32mm x 0.5 Signal #2 Info : 30M x 0.32mm x 0.25µm

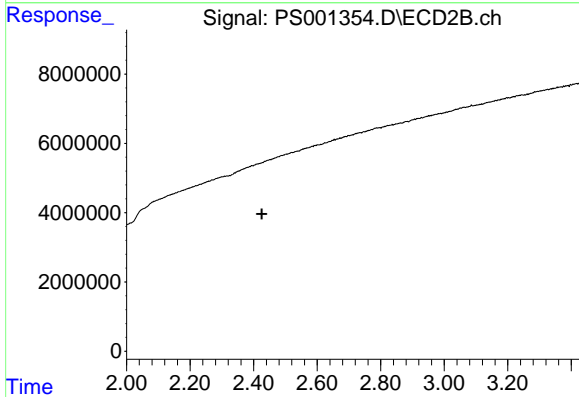




#1 Dalapon

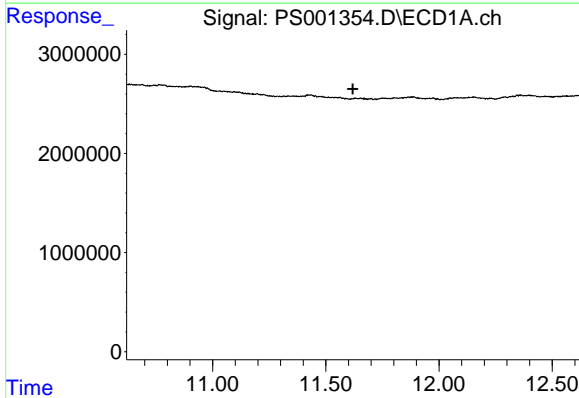
R.T.: 3.069 min  
 Delta R.T.: 0.056 min  
 Response: 2837575  
 Conc: 11.97 ng/ml

Instrument :  
 ECD\_L  
 ClientSampled :



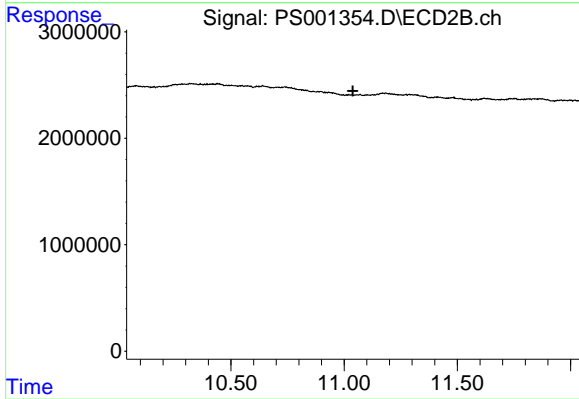
#1 Dalapon

R.T.: 0.000 min  
 Exp R.T. : 2.426 min  
 Response: 0  
 Conc: N.D.



#4 2,4-DCAA

R.T.: 0.000 min  
 Exp R.T. : 11.619 min  
 Response: 0  
 Conc: N.D.



#4 2,4-DCAA

R.T.: 0.000 min  
 Exp R.T. : 11.039 min  
 Response: 0  
 Conc: N.D.