

Data Path : Z:\pestpcbsrv\HPCHEM1\ECD_L\Data\PL080221\
 Data File : PL068635.D
 Signal(s) : Signal #1: ECD1A.ch Signal #2: ECD2B.ch
 Acq On : 02 Aug 2021 12:56
 Operator : AR\AJ
 Sample : PB138040BS
 Misc : CHLOR BS
 ALS Vial : 7 Sample Multiplier: 1

Instrument :
 ECD_L
 ClientSampleId :
 PB138040BS

Integration File signal 1: autoint1.e
 Integration File signal 2: autoint2.e
 Quant Time: Aug 03 01:31:38 2021
 Quant Method : Z:\pestpcbsrv\HPCHEM1\ECD_L\methods\PL071921.M
 Quant Title : GC Extractables
 QLast Update : Tue Jul 20 11:44:21 2021
 Response via : Initial Calibration
 Integrator: ChemStation

Volume Inj. : 1 µl
 Signal #1 Phase : ZB-MR2 Signal #2 Phase: ZB-MR1
 Signal #1 Info : 30M x 0.32mm x0.2 Signal #2 Info : 30M x 0.32mm x0.5µm

Compound	RT#1	RT#2	Resp#1	Resp#2	ng/ml	ng/ml

System Monitoring Compounds						
1) SA Tetrachlo...	4.648	5.572	10237111	20986997	23.853	20.567
28) SA Decachlor...	10.422	11.500	11518713	17766461	20.481	19.918
Target Compounds						
2) A alpha-BHC	0.000	6.152	0	494018	N.D.	0.363 #
3) MA gamma-BHC...	0.000	6.567f	0	107912	N.D.	0.084 #
4) MA Heptachlor	6.189	7.199	4776687	10003477	7.837	7.675
5) MB Aldrin	0.000	7.548f	0	6269078	N.D.	5.284 #
6) B beta-BHC	6.166	0.000	1514094	0	5.174	N.D. #
8) B Heptachlo...	0.000	8.024	0	6752407	N.D.	5.972 #
9) A Endosulfan I	7.490	8.441	830928	121400	1.573	0.118 #
10) B gamma-Chl...	7.369	8.306	9001714	28663691	15.689	25.451 #
11) B alpha-Chl...	7.437	8.389	10232926	36843858	17.817	32.759 #
12) B 4,4'-DDE	0.000	8.558	0	295716	N.D.	0.287 #
13) MA Dieldrin	7.765f	8.726	20908	1444734	0.039	1.362 #
14) MA Endrin	8.093f	8.978	1621774	1105229	3.243	1.236 #
15) B Endosulfa...	8.388	9.216	3968346	294800	8.038	0.325 #
17) MA 4,4'-DDT	0.000	9.438	0	382880	N.D.	0.406 #
19) B Endosulfa...	0.000	9.576	0	84781	N.D.	0.094 #
21) B Endrin ke...	0.000	10.095f	0	701881	N.D.	0.704 #
23) Chlordane-1	5.978	6.957	2935972	7368650	195.182	181.898
24) Chlordane-2	6.667	7.548	5023141	6269078	234.211	150.681 #
25) Chlordane-3	7.369	8.306	9001714	28663691	167.151	185.083
26) Chlordane-4	7.437	8.389	10232926	36843858	181.243	196.521
27) Chlordane-5	8.388	9.278	3968346	5651923	197.173	176.343

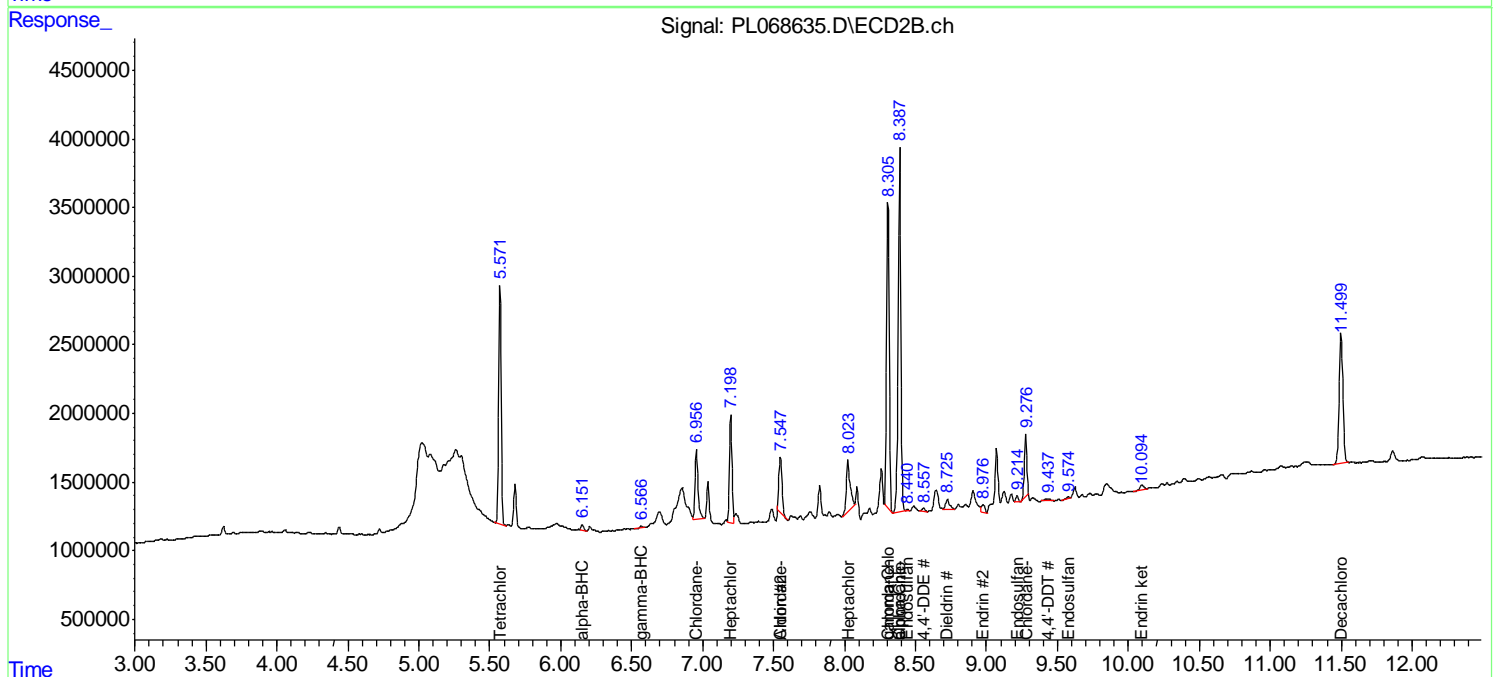
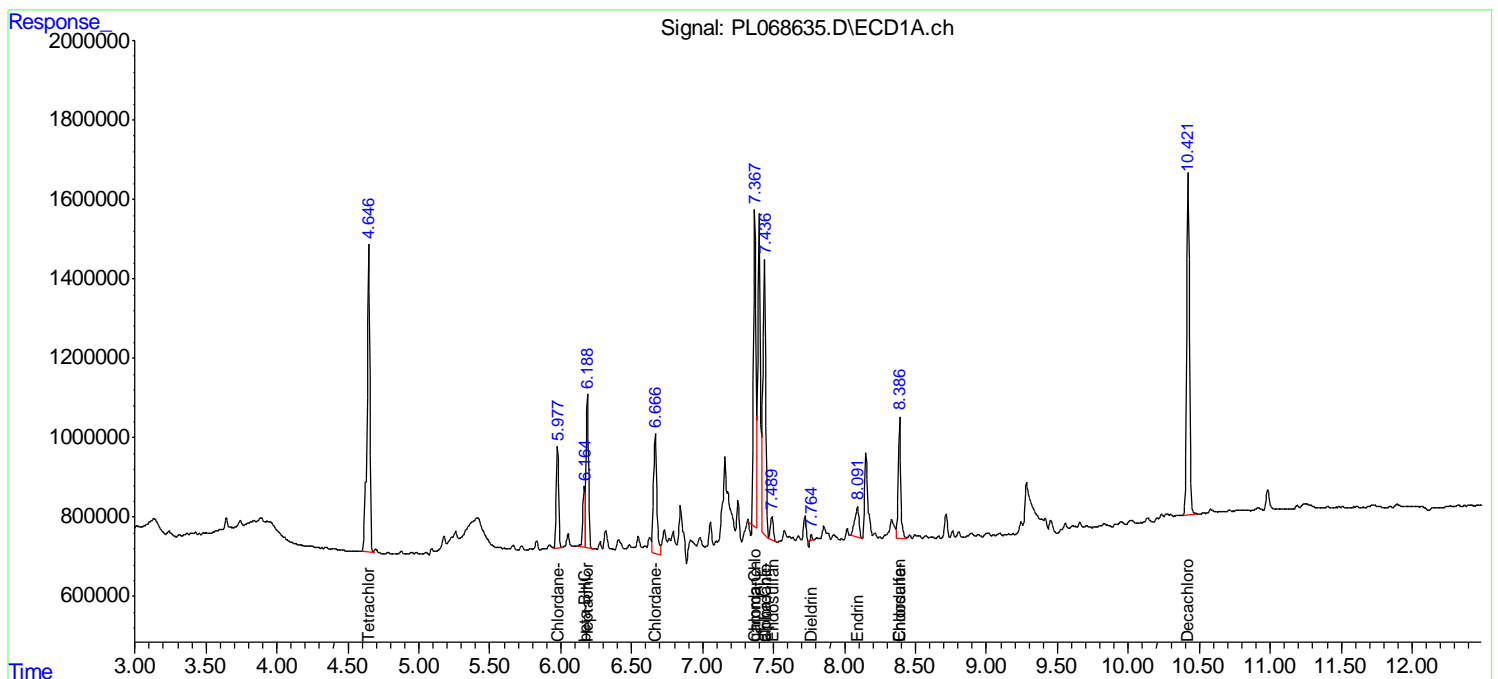
(f)=RT Delta > 1/2 Window (#)=Amounts differ by > 25% (m)=manual int.

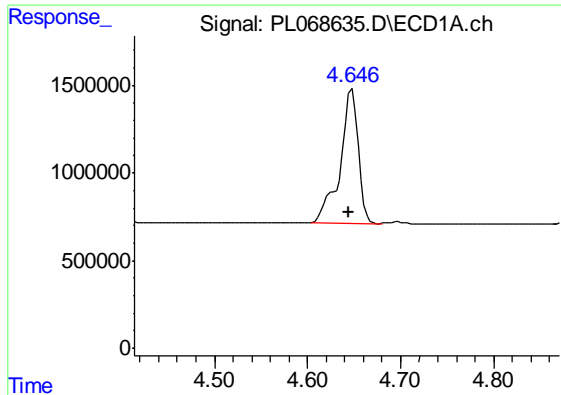
Data Path : Z:\pestpcbsrv\HPCHEM1\ECD_L\Data\PL080221\
 Data File : PL068635.D
 Signal(s) : Signal #1: ECD1A.ch Signal #2: ECD2B.ch
 Acq On : 02 Aug 2021 12:56
 Operator : AR\AJ
 Sample : PB138040BS
 Misc : CHLOR BS
 ALS Vial : 7 Sample Multiplier: 1

Instrument :
 ECD_L
 Client Sampled :
 PB138040BS

Integration File signal 1: autoint1.e
 Integration File signal 2: autoint2.e
 Quant Time: Aug 03 01:31:38 2021
 Quant Method : Z:\pestpcbsrv\HPCHEM1\ECD_L\methods\PL071921.M
 Quant Title : GC Extractables
 QLast Update : Tue Jul 20 11:44:21 2021
 Response via : Initial Calibration
 Integrator: ChemStation

Volume Inj. : 1 µl
 Signal #1 Phase : ZB-MR2 Signal #2 Phase: ZB-MR1
 Signal #1 Info : 30M x 0.32mm x0.2 Signal #2 Info : 30M x 0.32mm x0.5µm

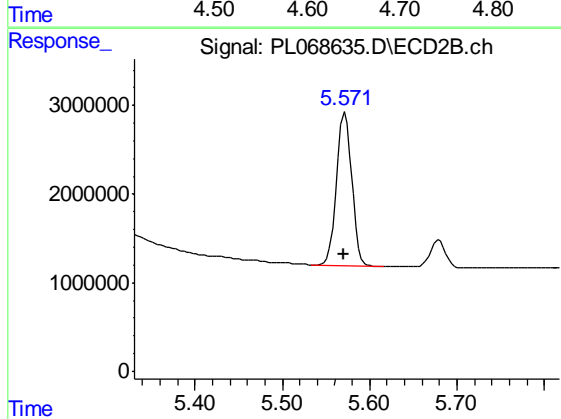




#1 Tetrachloro-m-xylene

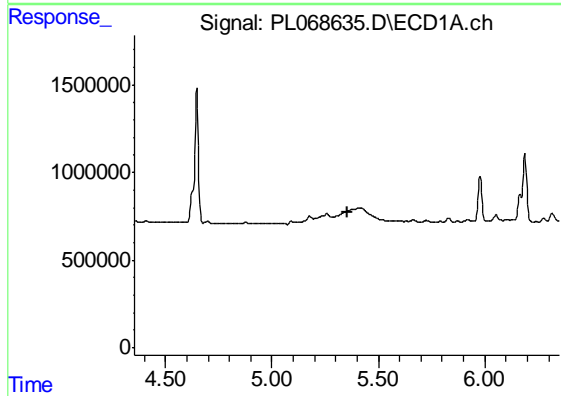
R.T.: 4.648 min
 Delta R.T.: 0.003 min
 Response: 10237111
 Conc: 23.85 ng/ml

Instrument :
 ECD_L
 ClientSampleId :
 PB138040BS



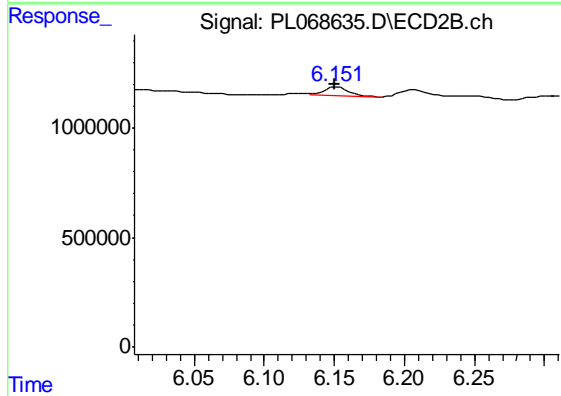
#1 Tetrachloro-m-xylene

R.T.: 5.572 min
 Delta R.T.: 0.001 min
 Response: 20986997
 Conc: 20.57 ng/ml



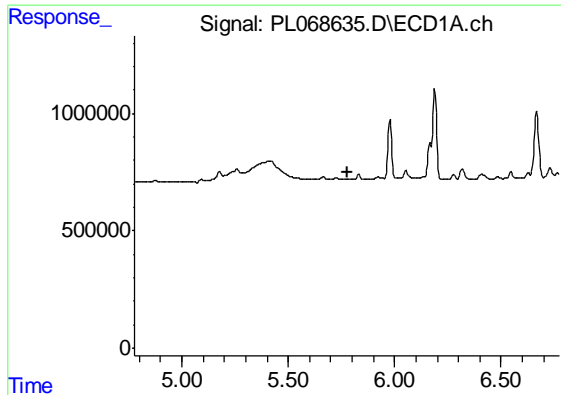
#2 alpha-BHC

R.T.: 0.000 min
 Exp R.T. : 5.353 min
 Response: 0
 Conc: N.D.



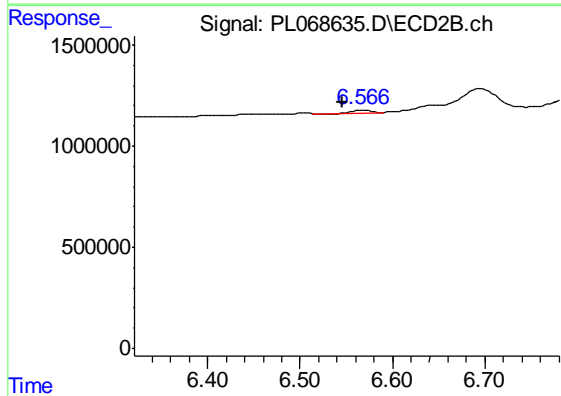
#2 alpha-BHC

R.T.: 6.152 min
 Delta R.T.: 0.002 min
 Response: 494018
 Conc: 0.36 ng/ml

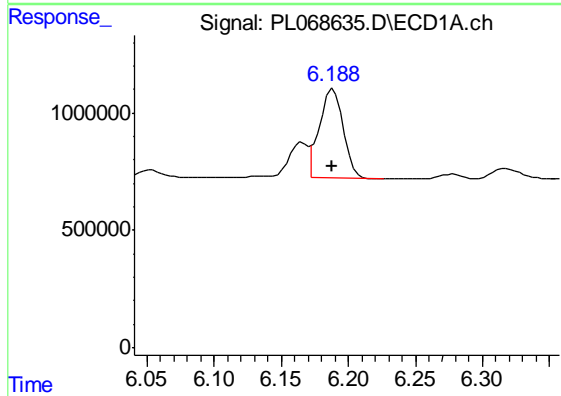


#3 gamma-BHC (Lindane)
 R.T.: 0.000 min
 Exp R.T. : 5.776 min
 Response: 0
 Conc: N.D.

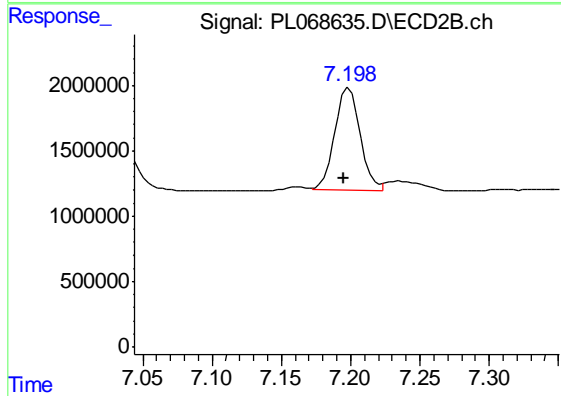
Instrument :
 ECD_L
 ClientSampleId :
 PB138040BS



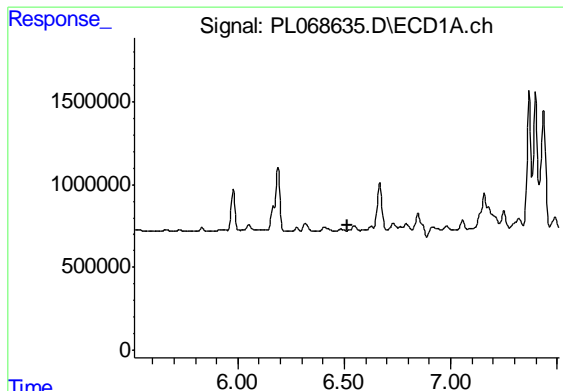
#3 gamma-BHC (Lindane)
 R.T.: 6.567 min
 Delta R.T.: 0.020 min
 Response: 107912
 Conc: 0.08 ng/ml



#4 Heptachlor
 R.T.: 6.189 min
 Delta R.T.: 0.000 min
 Response: 4776687
 Conc: 7.84 ng/ml



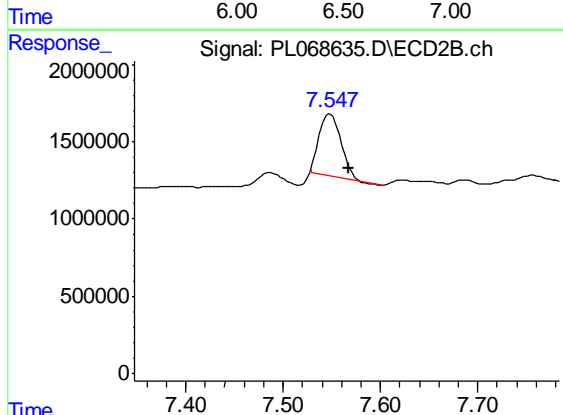
#4 Heptachlor
 R.T.: 7.199 min
 Delta R.T.: 0.004 min
 Response: 10003477
 Conc: 7.68 ng/ml



#5 Aldrin

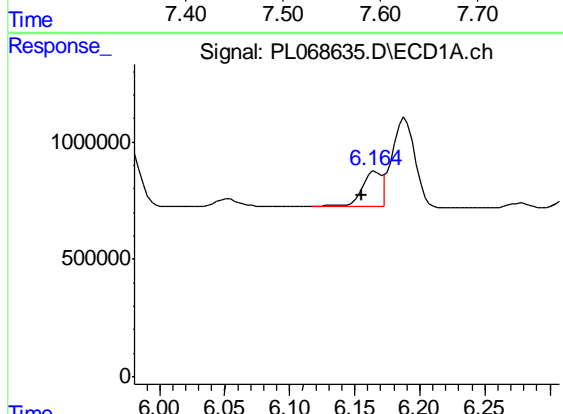
R.T.: 0.000 min
 Exp R.T. : 6.514 min
 Response: 0
 Conc: N.D.

Instrument :
 ECD_L
 ClientSampleId :
 PB138040BS



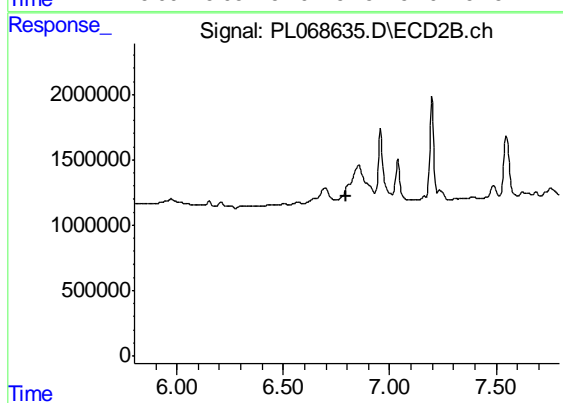
#5 Aldrin

R.T.: 7.548 min
 Delta R.T.: -0.019 min
 Response: 6269078
 Conc: 5.28 ng/ml



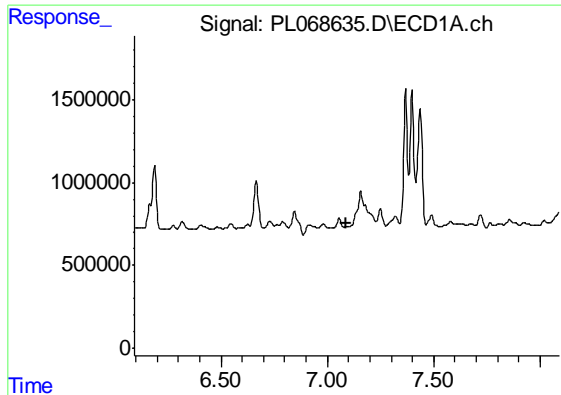
#6 beta-BHC

R.T.: 6.166 min
 Delta R.T.: 0.011 min
 Response: 1514094
 Conc: 5.17 ng/ml



#6 beta-BHC

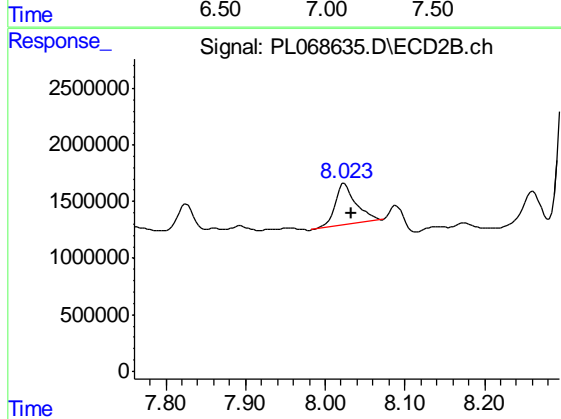
R.T.: 0.000 min
 Exp R.T. : 6.799 min
 Response: 0
 Conc: N.D.



#8 Heptachlor epoxide

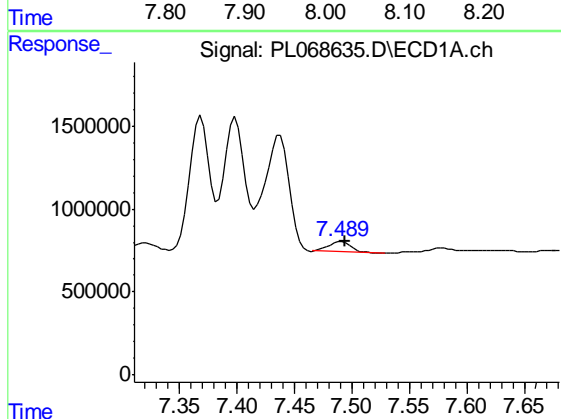
R.T.: 0.000 min
 Exp R.T. : 7.091 min
 Response: 0
 Conc: N.D.

Instrument :
 ECD_L
 ClientSampleId :
 PB138040BS



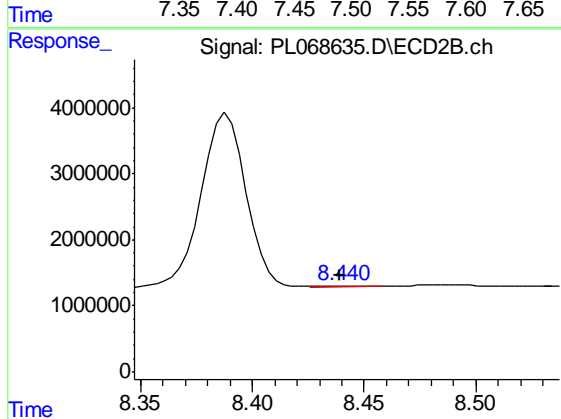
#8 Heptachlor epoxide

R.T.: 8.024 min
 Delta R.T.: -0.010 min
 Response: 6752407
 Conc: 5.97 ng/ml



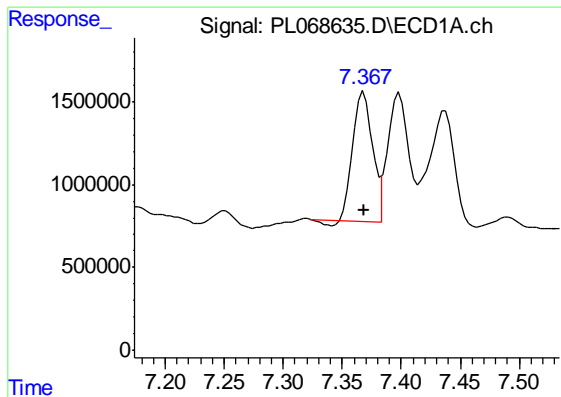
#9 Endosulfan I

R.T.: 7.490 min
 Delta R.T.: -0.004 min
 Response: 830928
 Conc: 1.57 ng/ml



#9 Endosulfan I

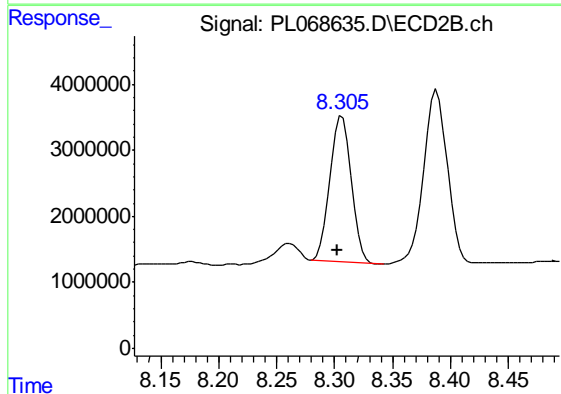
R.T.: 8.441 min
 Delta R.T.: 0.002 min
 Response: 121400
 Conc: 0.12 ng/ml



#10 gamma-Chlordane

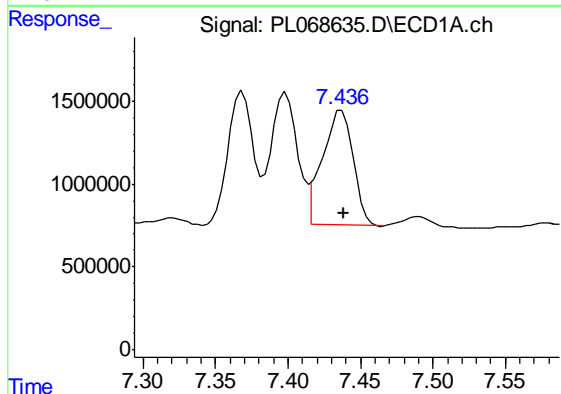
R.T.: 7.369 min
 Delta R.T.: 0.000 min
 Response: 9001714
 Conc: 15.69 ng/ml

Instrument :
 ECD_L
 ClientSampleId :
 PB138040BS



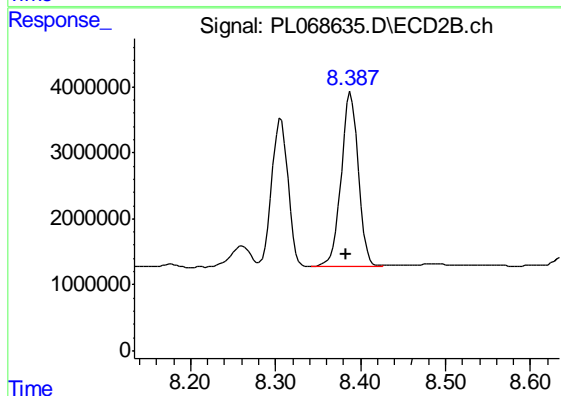
#10 gamma-Chlordane

R.T.: 8.306 min
 Delta R.T.: 0.004 min
 Response: 28663691
 Conc: 25.45 ng/ml



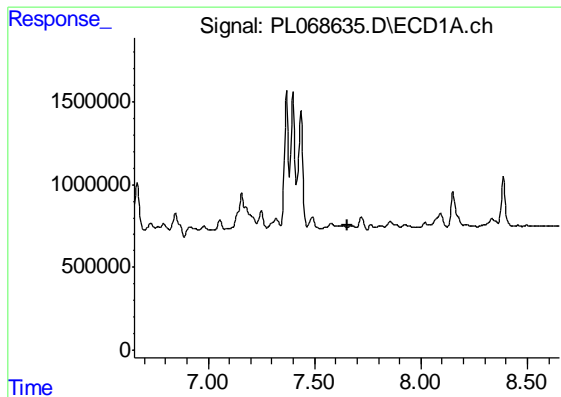
#11 alpha-Chlordane

R.T.: 7.437 min
 Delta R.T.: -0.001 min
 Response: 10232926
 Conc: 17.82 ng/ml



#11 alpha-Chlordane

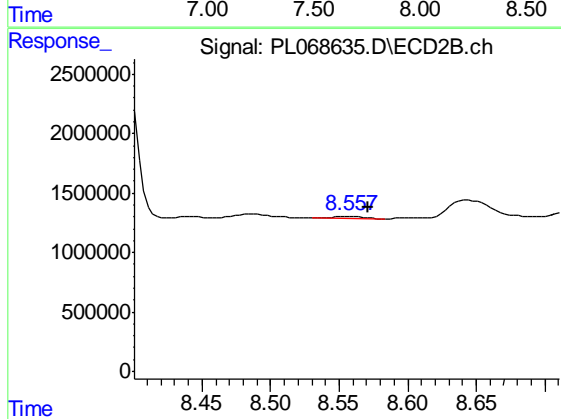
R.T.: 8.389 min
 Delta R.T.: 0.005 min
 Response: 36843858
 Conc: 32.76 ng/ml



#12 4,4'-DDE

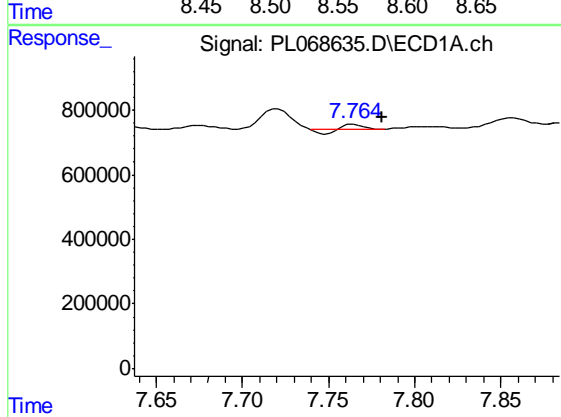
R.T.: 0.000 min
 Exp R.T. : 7.653 min
 Response: 0
 Conc: N.D.

Instrument :
 ECD_L
 ClientSampleId :
 PB138040BS



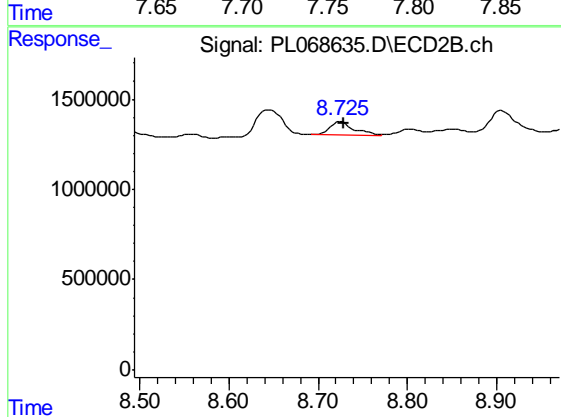
#12 4,4'-DDE

R.T.: 8.558 min
 Delta R.T.: -0.012 min
 Response: 295716
 Conc: 0.29 ng/ml



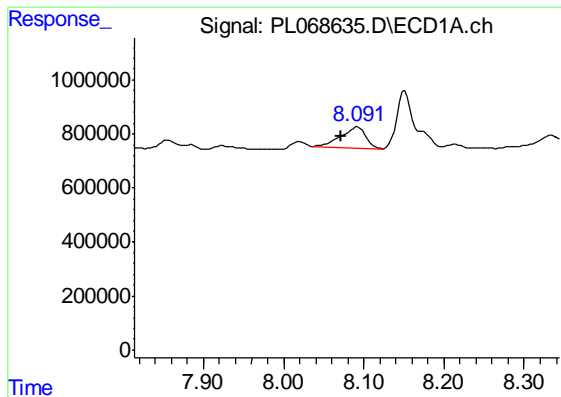
#13 Dieldrin

R.T.: 7.765 min
 Delta R.T.: -0.016 min
 Response: 20908
 Conc: 0.04 ng/ml



#13 Dieldrin

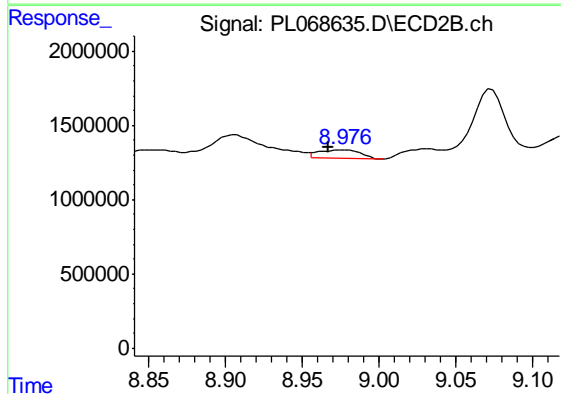
R.T.: 8.726 min
 Delta R.T.: -0.003 min
 Response: 1444734
 Conc: 1.36 ng/ml



#14 Endrin

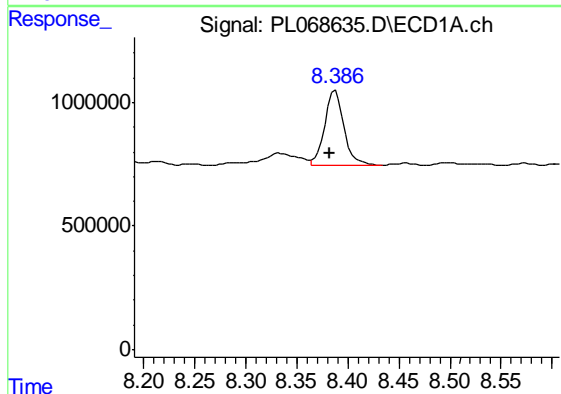
R.T.: 8.093 min
 Delta R.T.: 0.021 min
 Response: 1621774
 Conc: 3.24 ng/ml

Instrument :
 ECD_L
 ClientSampleId :
 PB138040BS



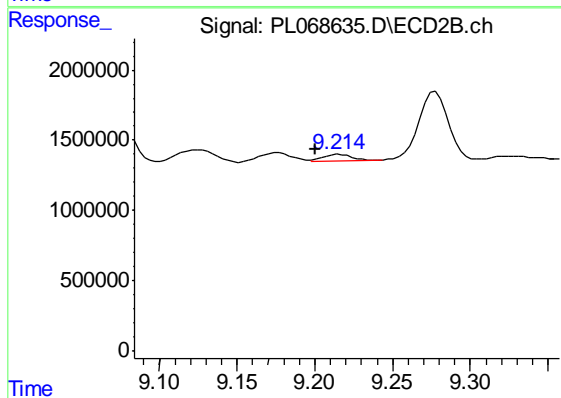
#14 Endrin

R.T.: 8.978 min
 Delta R.T.: 0.011 min
 Response: 1105229
 Conc: 1.24 ng/ml



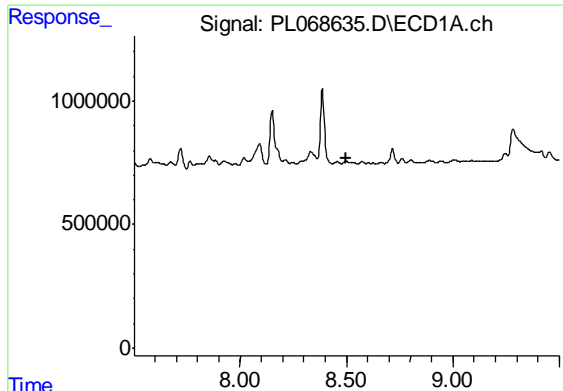
#15 Endosulfan II

R.T.: 8.388 min
 Delta R.T.: 0.005 min
 Response: 3968346
 Conc: 8.04 ng/ml



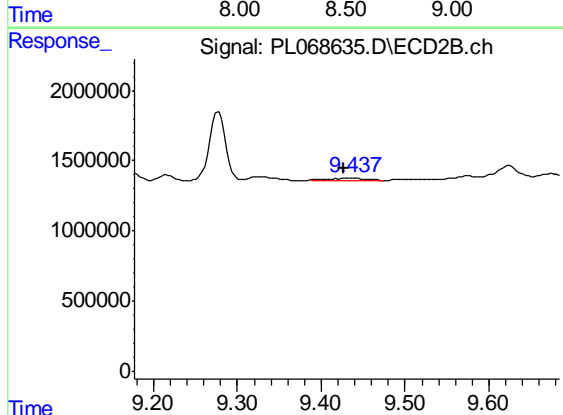
#15 Endosulfan II

R.T.: 9.216 min
 Delta R.T.: 0.015 min
 Response: 294800
 Conc: 0.33 ng/ml

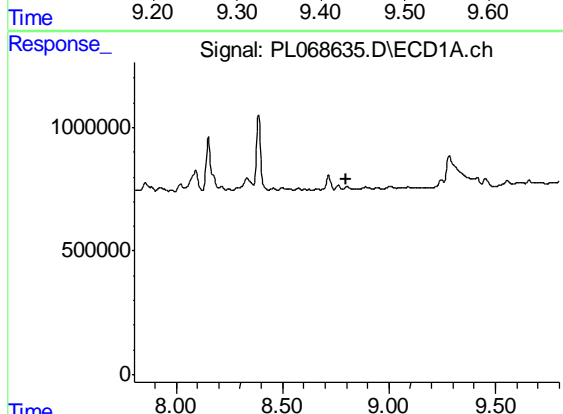


#17 4,4'-DDT
 R.T.: 0.000 min
 Exp R.T. : 8.501 min
 Response: 0
 Conc: N.D.

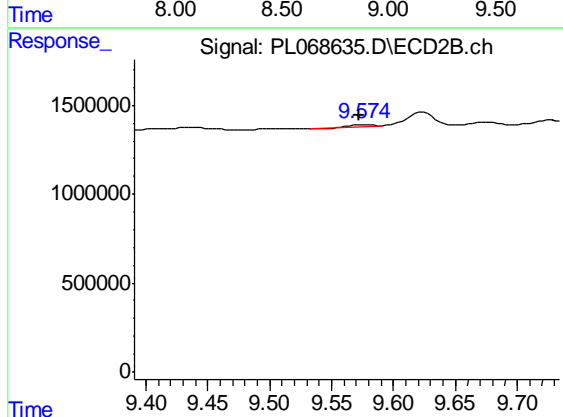
Instrument :
 ECD_L
 ClientSampleId :
 PB138040BS



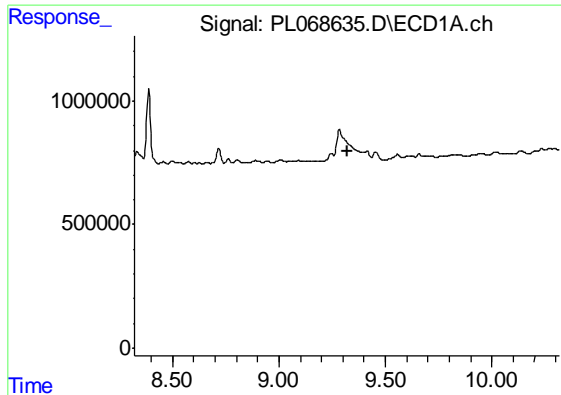
#17 4,4'-DDT
 R.T.: 9.438 min
 Delta R.T.: 0.011 min
 Response: 382880
 Conc: 0.41 ng/ml



#19 Endosulfan Sulfate
 R.T.: 0.000 min
 Exp R.T. : 8.801 min
 Response: 0
 Conc: N.D.

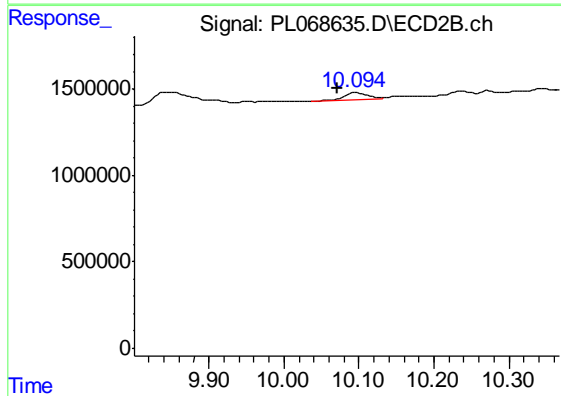


#19 Endosulfan Sulfate
 R.T.: 9.576 min
 Delta R.T.: 0.004 min
 Response: 84781
 Conc: 0.09 ng/ml

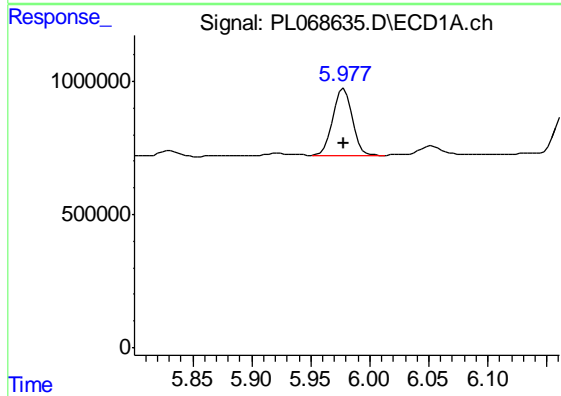


#21 Endrin ketone
 R.T.: 0.000 min
 Exp R.T. : 9.320 min
 Response: 0
 Conc: N.D.

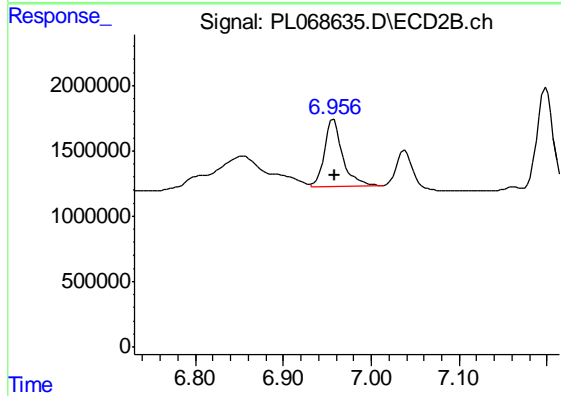
Instrument :
 ECD_L
 ClientSampleId :
 PB138040BS



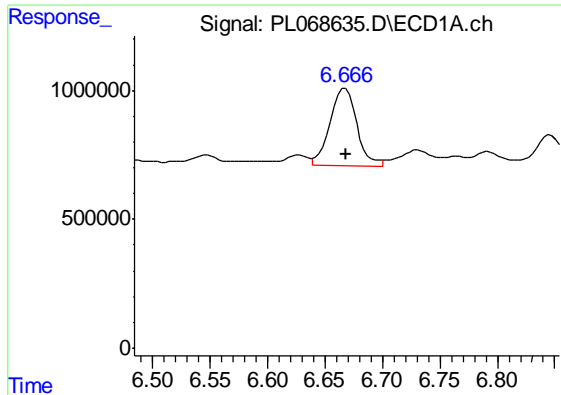
#21 Endrin ketone
 R.T.: 10.095 min
 Delta R.T.: 0.024 min
 Response: 701881
 Conc: 0.70 ng/ml



#23 Chlordane-1
 R.T.: 5.978 min
 Delta R.T.: 0.000 min
 Response: 2935972
 Conc: 195.18 ng/ml



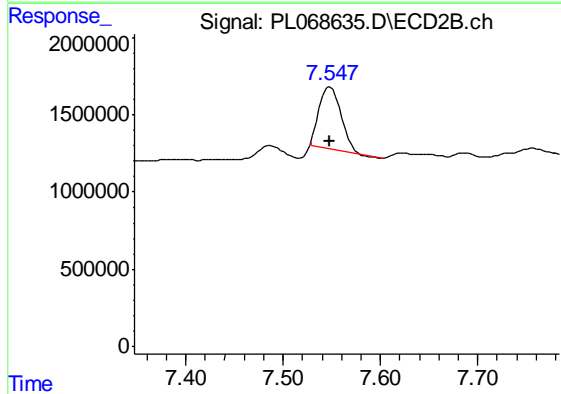
#23 Chlordane-1
 R.T.: 6.957 min
 Delta R.T.: 0.000 min
 Response: 7368650
 Conc: 181.90 ng/ml



#24 Chlordane-2

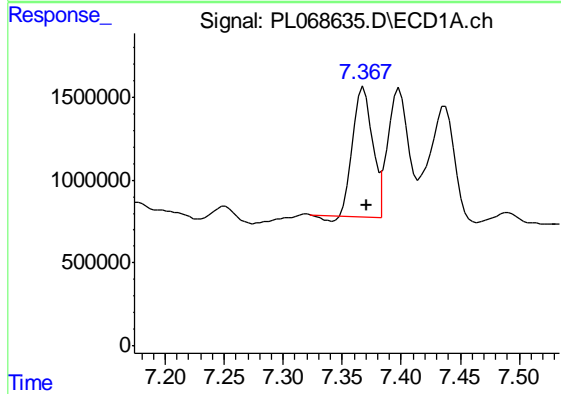
R.T.: 6.667 min
 Delta R.T.: 0.000 min
 Response: 5023141
 Conc: 234.21 ng/ml

Instrument :
 ECD_L
 ClientSampleId :
 PB138040BS



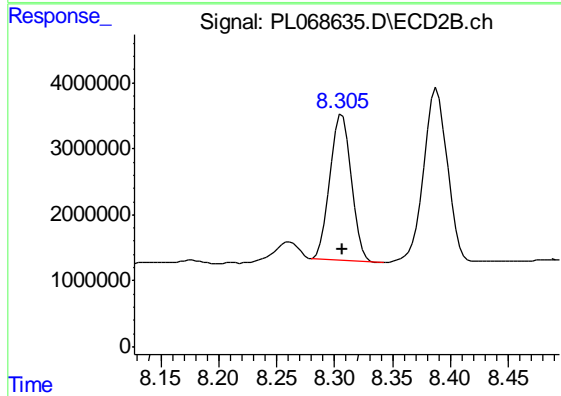
#24 Chlordane-2

R.T.: 7.548 min
 Delta R.T.: 0.000 min
 Response: 6269078
 Conc: 150.68 ng/ml



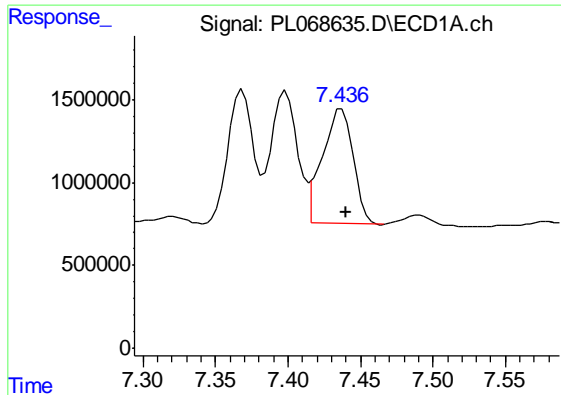
#25 Chlordane-3

R.T.: 7.369 min
 Delta R.T.: -0.002 min
 Response: 9001714
 Conc: 167.15 ng/ml



#25 Chlordane-3

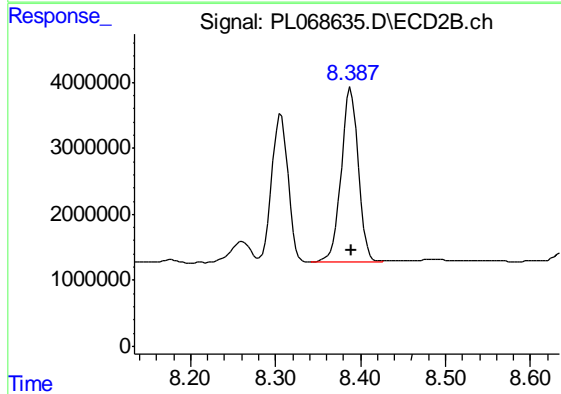
R.T.: 8.306 min
 Delta R.T.: 0.000 min
 Response: 28663691
 Conc: 185.08 ng/ml



#26 Chlordane-4

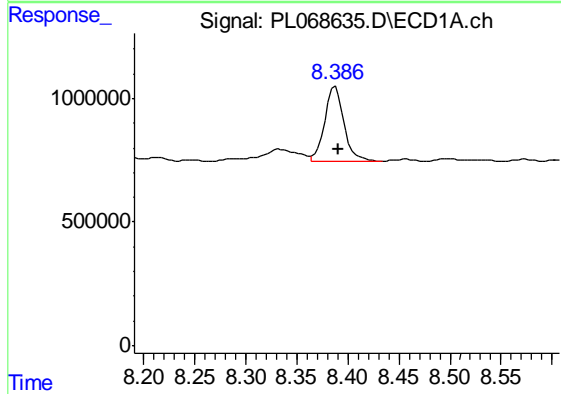
R.T.: 7.437 min
 Delta R.T.: -0.003 min
 Response: 10232926
 Conc: 181.24 ng/ml

Instrument :
 ECD_L
 ClientSampleId :
 PB138040BS



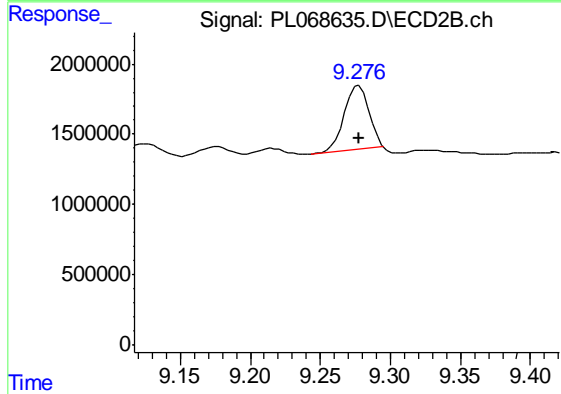
#26 Chlordane-4

R.T.: 8.389 min
 Delta R.T.: 0.000 min
 Response: 36843858
 Conc: 196.52 ng/ml



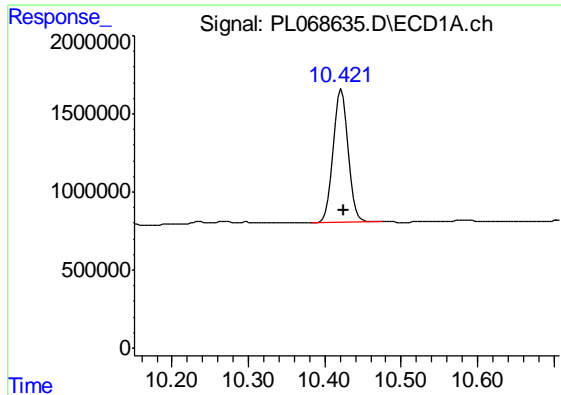
#27 Chlordane-5

R.T.: 8.388 min
 Delta R.T.: -0.003 min
 Response: 3968346
 Conc: 197.17 ng/ml



#27 Chlordane-5

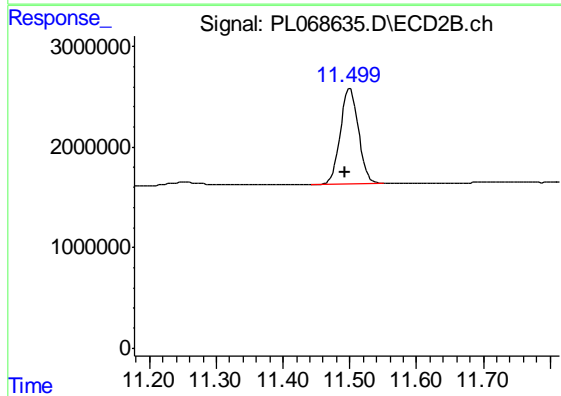
R.T.: 9.278 min
 Delta R.T.: 0.000 min
 Response: 5651923
 Conc: 176.34 ng/ml



#28 Decachlorobiphenyl

R.T.: 10.422 min
Delta R.T.: -0.002 min
Response: 11518713
Conc: 20.48 ng/ml

Instrument :
ECD_L
ClientSampleId :
PB138040BS



#28 Decachlorobiphenyl

R.T.: 11.500 min
Delta R.T.: 0.008 min
Response: 17766461
Conc: 19.92 ng/ml