

Data Path : Z:\pestpcbsrv\HPCHEM1\ECD\_L\Data\PL080224\  
 Data File : PL090741.D  
 Signal(s) : Signal #1: ECD1A.ch Signal #2: ECD2B.ch  
 Acq On : 02 Aug 2024 08:48  
 Operator : AR\AJ  
 Sample : PEM  
 Misc :  
 ALS Vial : 3 Sample Multiplier: 1

Instrument :  
 ECD\_L  
 ClientSampleId :

Integration File signal 1: autoint1.e  
 Integration File signal 2: autoint2.e  
 Quant Time: Aug 03 00:29:43 2024  
 Quant Method : Z:\pestpcbsrv\HPCHEM1\ECD\_L\methods\PL071524.M  
 Quant Title : GC Extractables  
 QLast Update : Mon Jul 15 14:16:48 2024  
 Response via : Initial Calibration  
 Integrator: ChemStation

Volume Inj. : 1 µl  
 Signal #1 Phase : ZB-MR2 Signal #2 Phase: ZB-MR1  
 Signal #1 Info : 30M x 0.32mm x0.2 Signal #2 Info : 30M x 0.32mm x0.5µm

	Compound	RT#1	RT#2	Resp#1	Resp#2	ng/ml	ng/ml
-----							
System Monitoring Compounds							
1)	SA Tetrachlo...	3.547	2.789	45229125	38290194	21.722	22.752
28)	SA Decachlor...	9.060	7.930	32870453	34687796	24.736	23.790
Target Compounds							
2)	A alpha-BHC	4.002	3.292	34467665	25392434	11.616	10.510
3)	MA gamma-BHC...	4.335	3.622	32759586	24628063	11.698	10.680
4)	MA Heptachlor	0.000	3.980f	0	62454	N.D.	0.028 #
5)	MB Aldrin	0.000	4.256	0	6630049	N.D.	3.116 #
6)	B beta-BHC	4.530	3.921	15483716	12698473	12.206	12.302
7)	B delta-BHC	0.000	4.152	0	1881476	N.D.	0.855 #
8)	B Heptachlo...	5.687	4.751	32473446	7494	13.816	0.004 #
10)	B gamma-Chl...	5.919f	5.002	14383194	3113197	6.186	1.536 #
11)	B alpha-Chl...	0.000	5.053	0	4969145	N.D.	2.459 #
12)	B 4,4'-DDE	0.000	5.248	0	9207061	N.D.	5.152 #
13)	MA Dieldrin	0.000	5.388	0	390384	N.D.	0.199 #
14)	MA Endrin	6.580	5.656	112.7E6	93394554	61.311	54.264
15)	B Endosulfa...	6.818f	5.963	10870280	1159059	5.527	0.678 #
16)	A 4,4'-DDD	6.714	5.803	37266433	7998211	22.075	5.338 #
17)	MA 4,4'-DDT	7.029	6.054	159.3E6	168.1E6	94.640	114.750
18)	B Endrin al...	6.929	6.129	4303647	3738626	2.901	2.861
19)	B Endosulfa...	0.000	6.338f	0	346657	N.D.	0.215 #
20)	A Methoxychlor	7.504	6.628	210.9E6	205.8E6	238.874	254.546
21)	B Endrin ke...	7.648	6.856	10304223	6839092	5.398	3.742 #
22)	Mirex	0.000	7.059f	0	372496	N.D.	0.251 #
23)	Chlordane-1	0.000	3.794	0	329268	N.D.	5.318 #
24)	Chlordane-2	0.000	4.376	0	4664231	N.D.	61.500 #
25)	Chlordane-3	0.000	5.002	0	3113197	N.D.	15.063 #
26)	Chlordane-4	0.000	5.053	0	4969145	N.D.	25.392 #
27)	Chlordane-5	0.000	5.746f	0	547811	N.D.	9.088 #

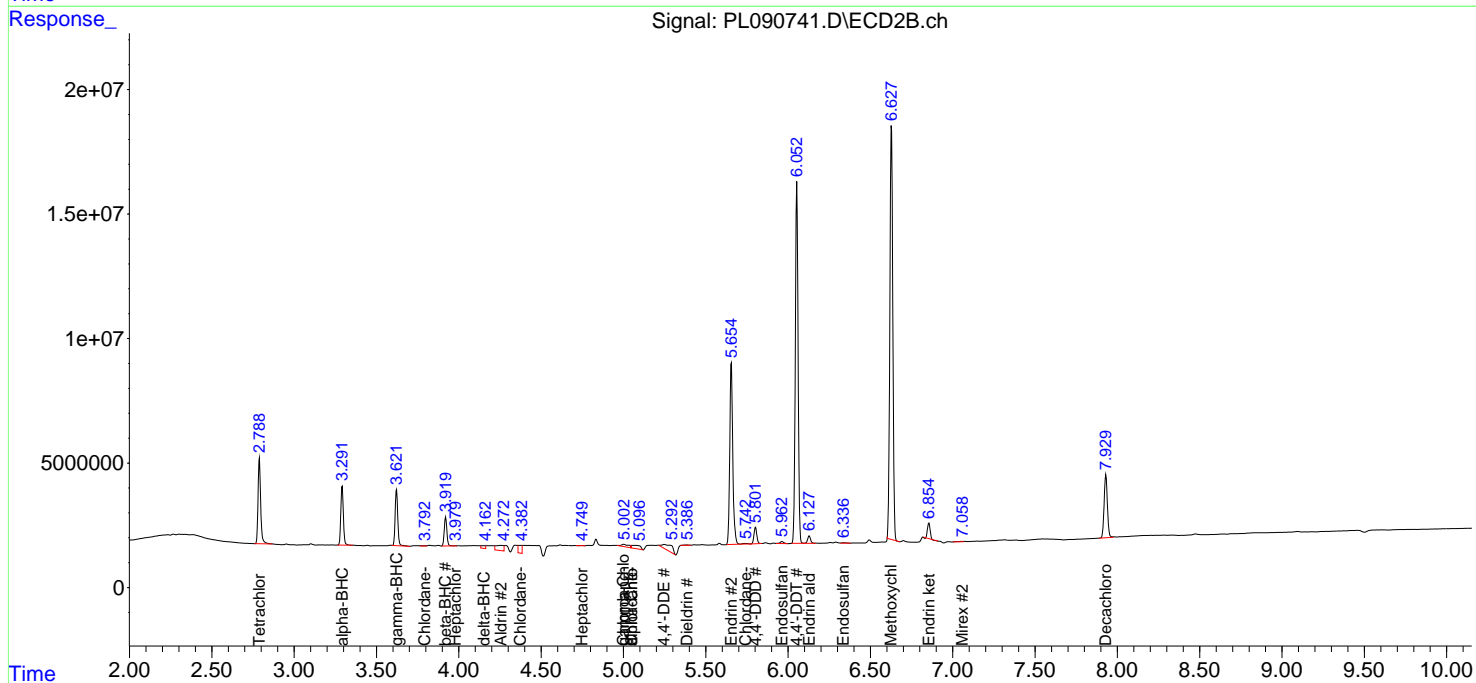
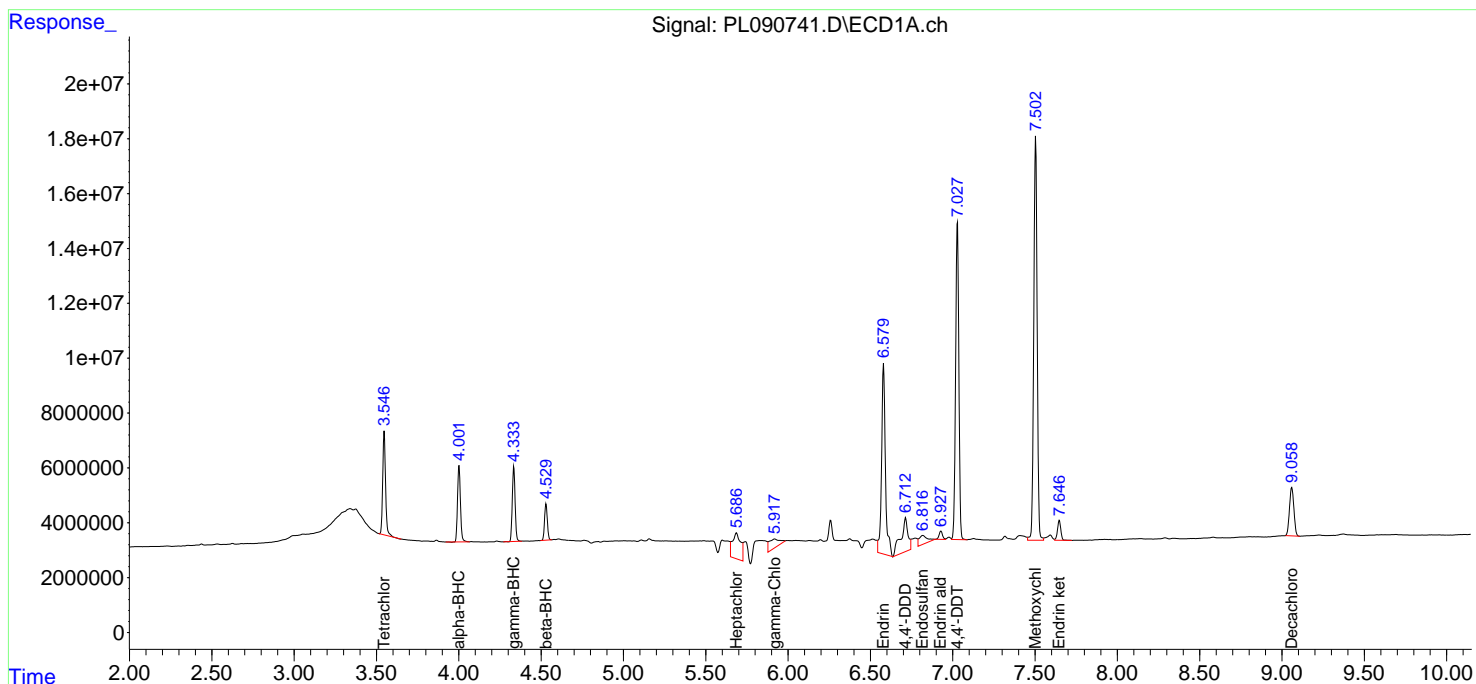
(f)=RT Delta > 1/2 Window (#)=Amounts differ by > 25% (m)=manual int.

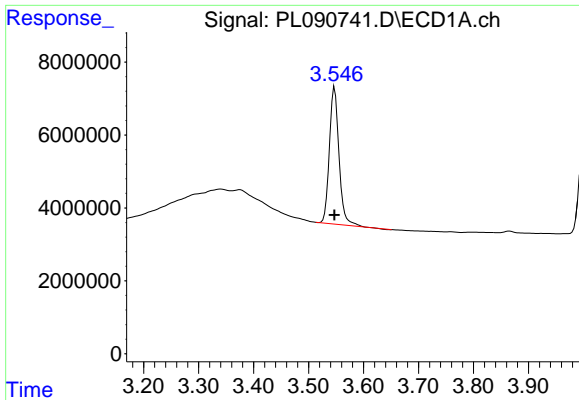
Data Path : Z:\pestpcbsrv\HPCHEM1\ECD\_L\Data\PL080224\  
 Data File : PL090741.D  
 Signal(s) : Signal #1: ECD1A.ch Signal #2: ECD2B.ch  
 Acq On : 02 Aug 2024 08:48  
 Operator : AR\AJ  
 Sample : PEM  
 Misc :  
 ALS Vial : 3 Sample Multiplier: 1

Instrument :  
 ECD\_L  
 ClientSampleId :

Integration File signal 1: autoint1.e  
 Integration File signal 2: autoint2.e  
 Quant Time: Aug 03 00:29:43 2024  
 Quant Method : Z:\pestpcbsrv\HPCHEM1\ECD\_L\methods\PL071524.M  
 Quant Title : GC Extractables  
 QLast Update : Mon Jul 15 14:16:48 2024  
 Response via : Initial Calibration  
 Integrator: ChemStation

Volume Inj. : 1 µl  
 Signal #1 Phase : ZB-MR2 Signal #2 Phase: ZB-MR1  
 Signal #1 Info : 30M x 0.32mm x0.2 Signal #2 Info : 30M x 0.32mm x0.5µm

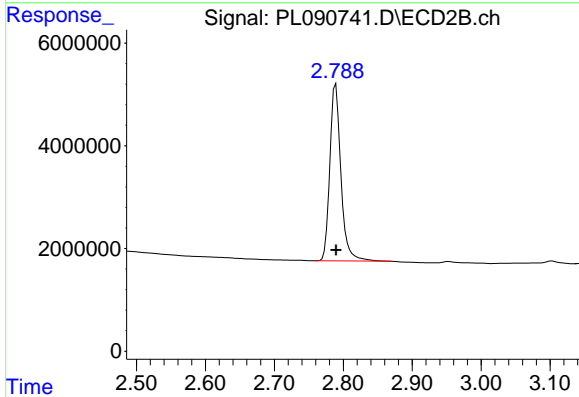




#1 Tetrachloro-m-xylene

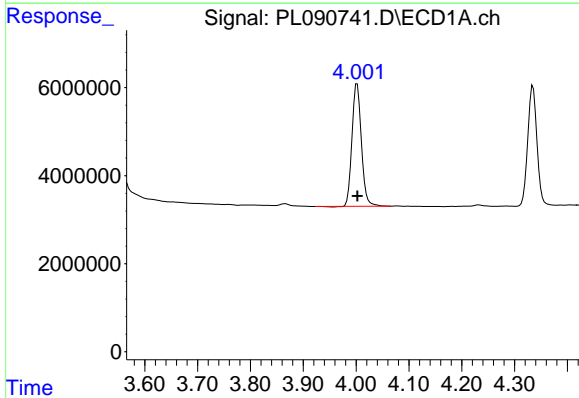
R.T.: 3.547 min  
Delta R.T.: 0.000 min  
Response: 45229125  
Conc: 21.72 ng/ml

Instrument :  
ECD\_L  
ClientSampleId :



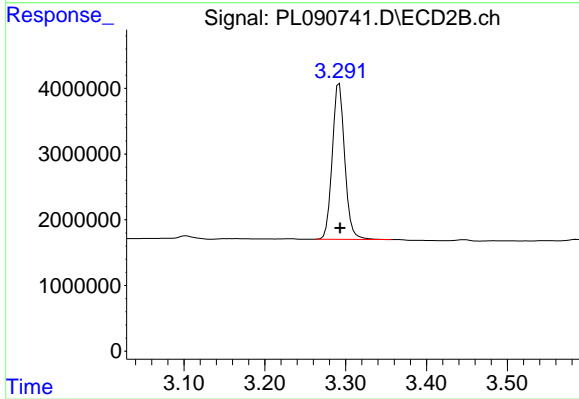
#1 Tetrachloro-m-xylene

R.T.: 2.789 min  
Delta R.T.: 0.000 min  
Response: 38290194  
Conc: 22.75 ng/ml



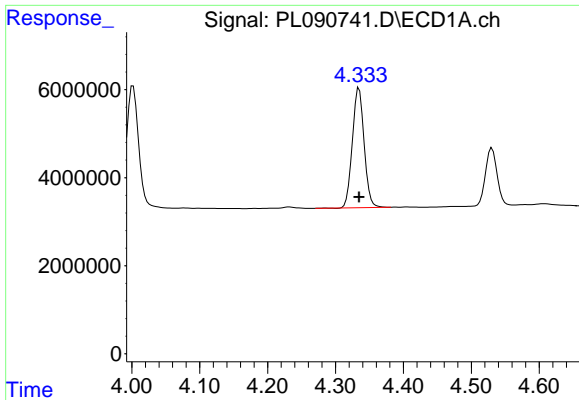
#2 alpha-BHC

R.T.: 4.002 min  
Delta R.T.: 0.000 min  
Response: 34467665  
Conc: 11.62 ng/ml



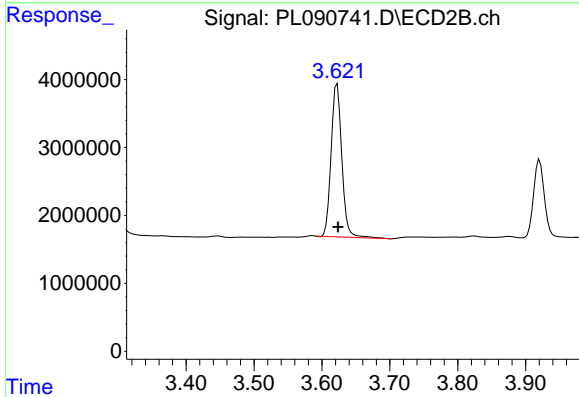
#2 alpha-BHC

R.T.: 3.292 min  
Delta R.T.: -0.001 min  
Response: 25392434  
Conc: 10.51 ng/ml

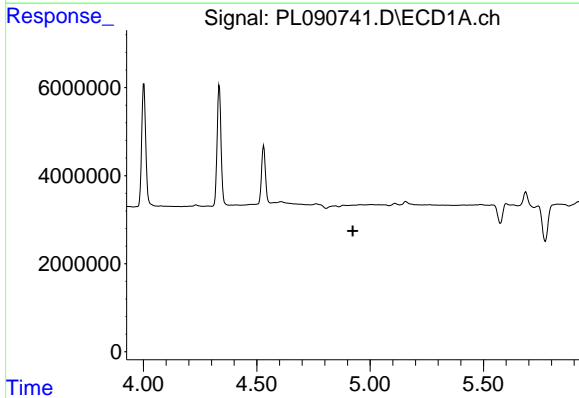


#3 gamma-BHC (Lindane)  
 R.T.: 4.335 min  
 Delta R.T.: 0.000 min  
 Response: 32759586  
 Conc: 11.70 ng/ml

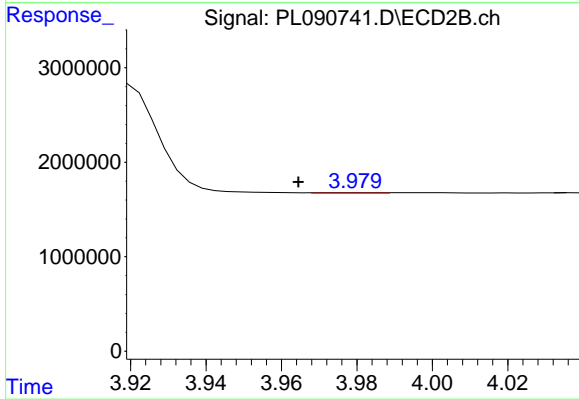
Instrument :  
 ECD\_L  
 ClientSampleId :



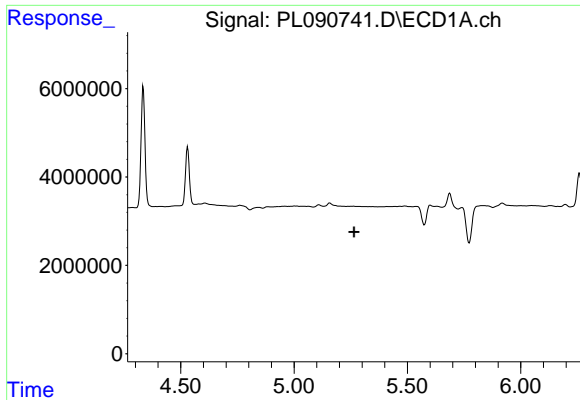
#3 gamma-BHC (Lindane)  
 R.T.: 3.622 min  
 Delta R.T.: -0.001 min  
 Response: 24628063  
 Conc: 10.68 ng/ml



#4 Heptachlor  
 R.T.: 0.000 min  
 Exp R.T. : 4.924 min  
 Response: 0  
 Conc: N.D.

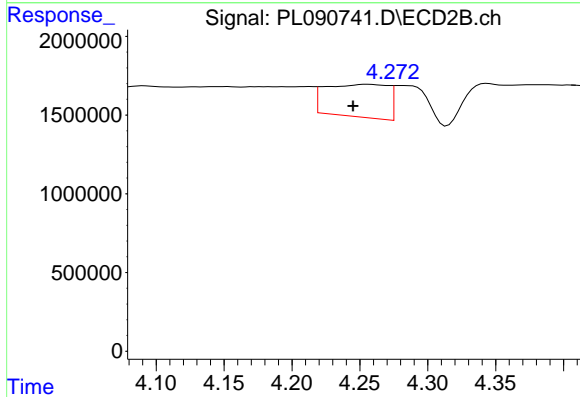


#4 Heptachlor  
 R.T.: 3.980 min  
 Delta R.T.: 0.016 min  
 Response: 62454  
 Conc: 0.03 ng/ml

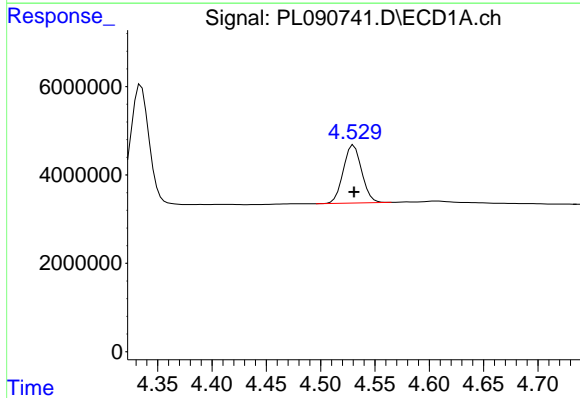


#5 Aldrin  
 R.T.: 0.000 min  
 Exp R.T.: 5.266 min  
 Response: 0  
 Conc: N.D.

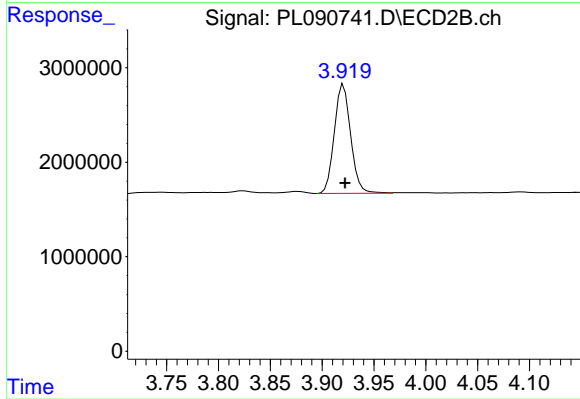
Instrument :  
 ECD\_L  
 ClientSampleId :



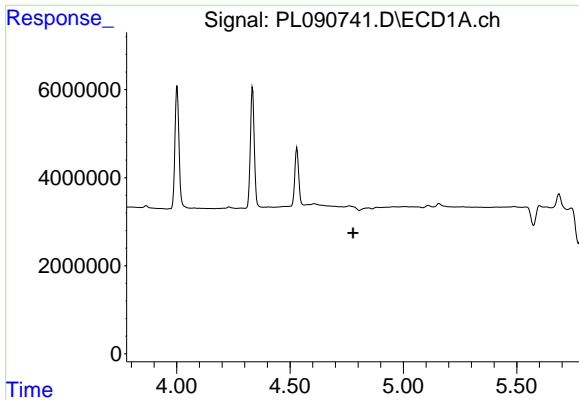
#5 Aldrin  
 R.T.: 4.256 min  
 Delta R.T.: 0.011 min  
 Response: 6630049  
 Conc: 3.12 ng/ml



#6 beta-BHC  
 R.T.: 4.530 min  
 Delta R.T.: 0.000 min  
 Response: 15483716  
 Conc: 12.21 ng/ml



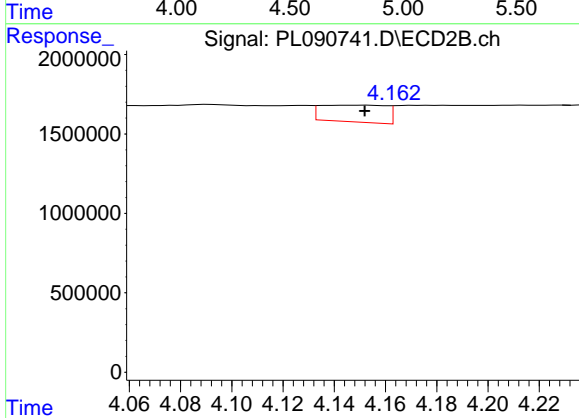
#6 beta-BHC  
 R.T.: 3.921 min  
 Delta R.T.: -0.001 min  
 Response: 12698473  
 Conc: 12.30 ng/ml



#7 delta-BHC

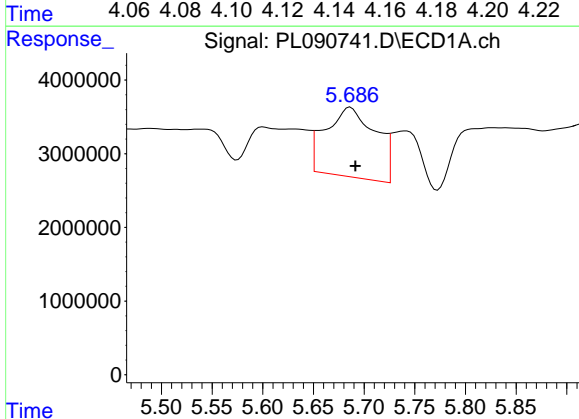
R.T.: 0.000 min  
 Exp R.T.: 4.778 min  
 Response: 0  
 Conc: N.D.

Instrument :  
 ECD\_L  
 ClientSampleId :



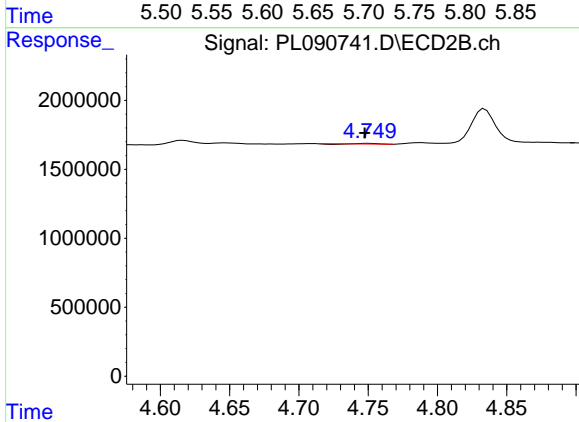
#7 delta-BHC

R.T.: 4.152 min  
 Delta R.T.: 0.000 min  
 Response: 1881476  
 Conc: 0.86 ng/ml



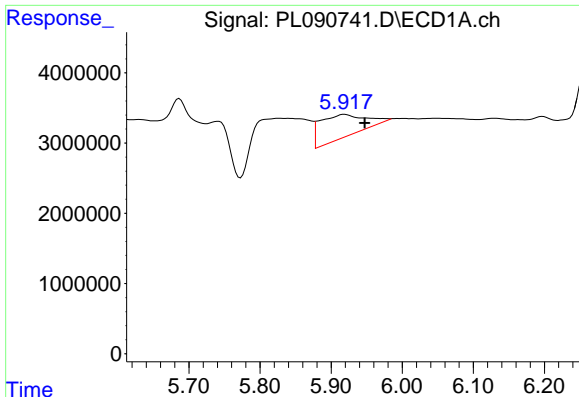
#8 Heptachlor epoxide

R.T.: 5.687 min  
 Delta R.T.: -0.005 min  
 Response: 32473446  
 Conc: 13.82 ng/ml



#8 Heptachlor epoxide

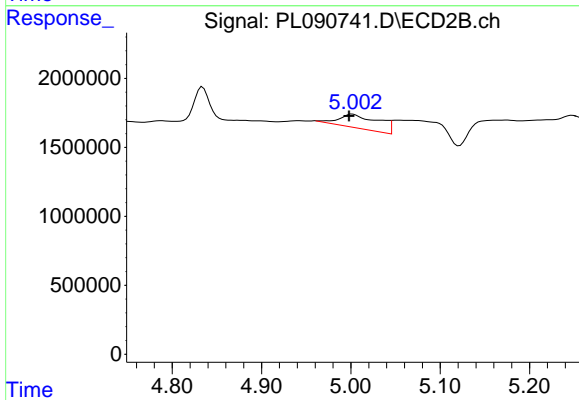
R.T.: 4.751 min  
 Delta R.T.: 0.003 min  
 Response: 7494  
 Conc: 0.00 ng/ml



#10 gamma-Chlordane

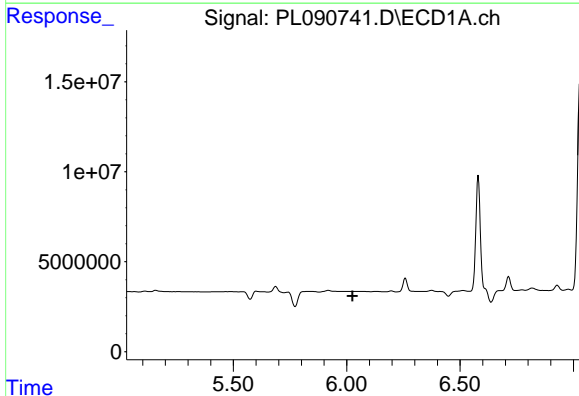
R.T.: 5.919 min  
 Delta R.T.: -0.028 min  
 Response: 14383194  
 Conc: 6.19 ng/ml

Instrument :  
 ECD\_L  
 ClientSampleId :



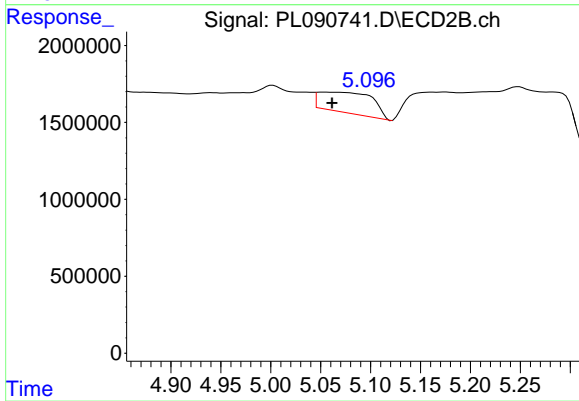
#10 gamma-Chlordane

R.T.: 5.002 min  
 Delta R.T.: 0.004 min  
 Response: 3113197  
 Conc: 1.54 ng/ml



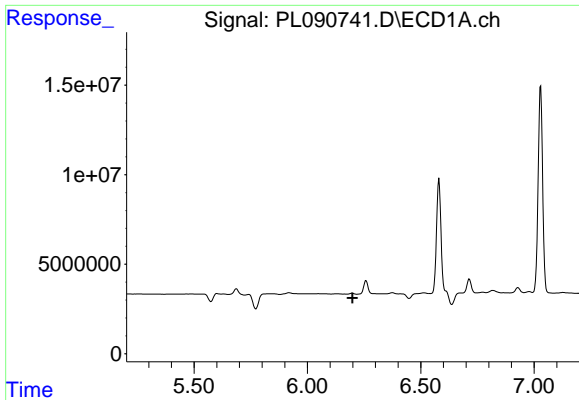
#11 alpha-Chlordane

R.T.: 0.000 min  
 Exp R.T. : 6.026 min  
 Response: 0  
 Conc: N.D.



#11 alpha-Chlordane

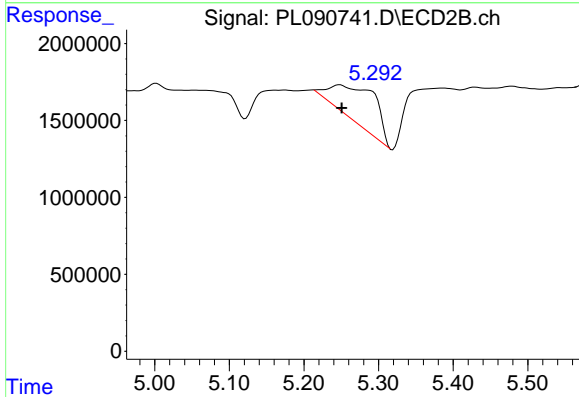
R.T.: 5.053 min  
 Delta R.T.: -0.008 min  
 Response: 4969145  
 Conc: 2.46 ng/ml



#12 4,4'-DDE

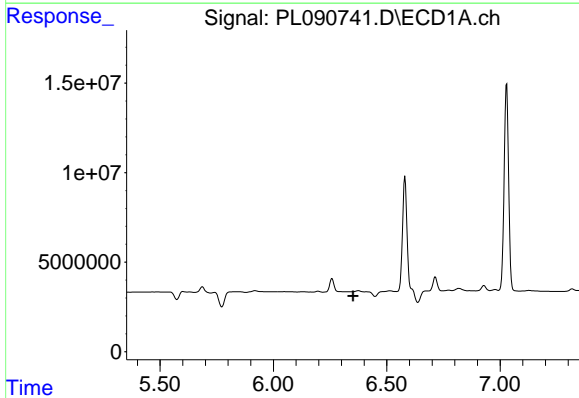
R.T.: 0.000 min  
 Exp R.T.: 6.199 min  
 Response: 0  
 Conc: N.D.

Instrument :  
 ECD\_L  
 ClientSampleId :



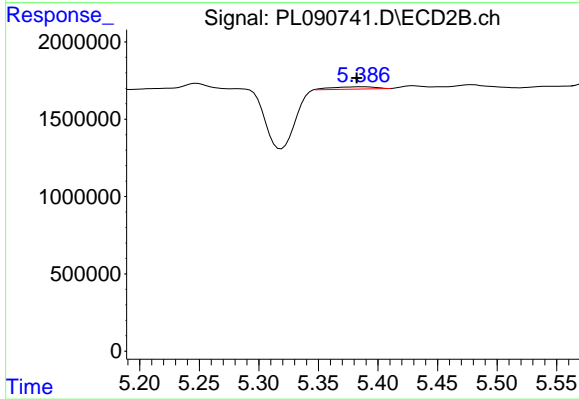
#12 4,4'-DDE

R.T.: 5.248 min  
 Delta R.T.: -0.003 min  
 Response: 9207061  
 Conc: 5.15 ng/ml



#13 Dieldrin

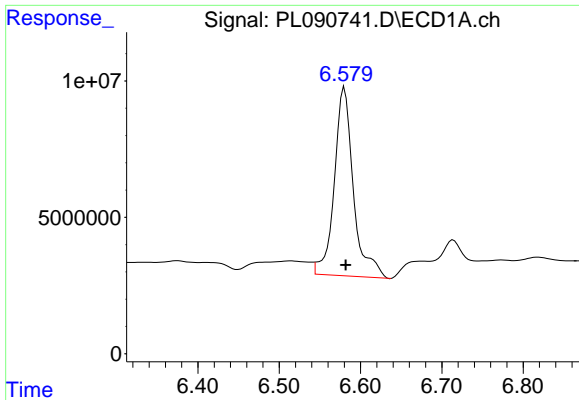
R.T.: 0.000 min  
 Exp R.T.: 6.352 min  
 Response: 0  
 Conc: N.D.



#13 Dieldrin

R.T.: 5.388 min  
 Delta R.T.: 0.005 min  
 Response: 390384  
 Conc: 0.20 ng/ml

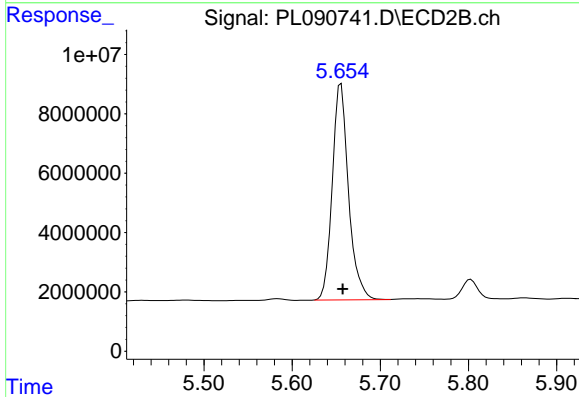




#14 Endrin

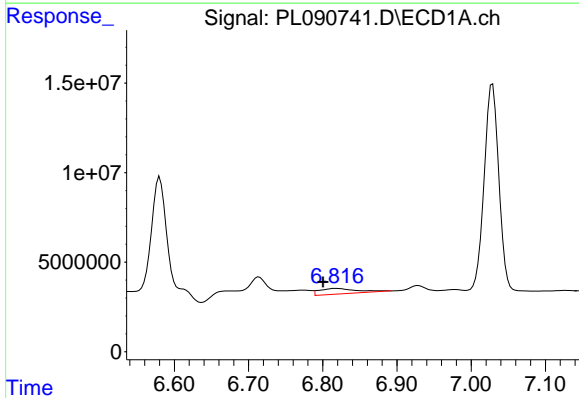
R.T.: 6.580 min  
 Delta R.T.: -0.001 min  
 Response: 112715471  
 Conc: 61.31 ng/ml

Instrument :  
 ECD\_L  
 ClientSampleId :



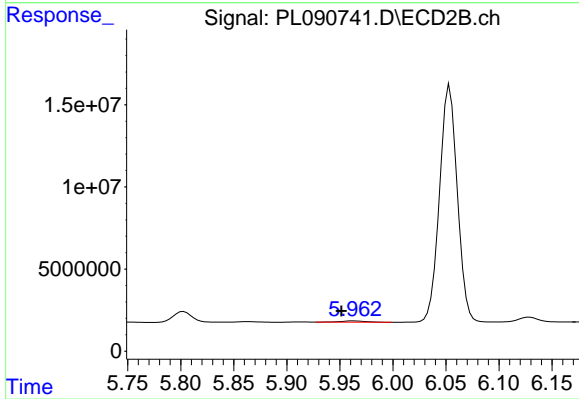
#14 Endrin

R.T.: 5.656 min  
 Delta R.T.: -0.002 min  
 Response: 93394554  
 Conc: 54.26 ng/ml



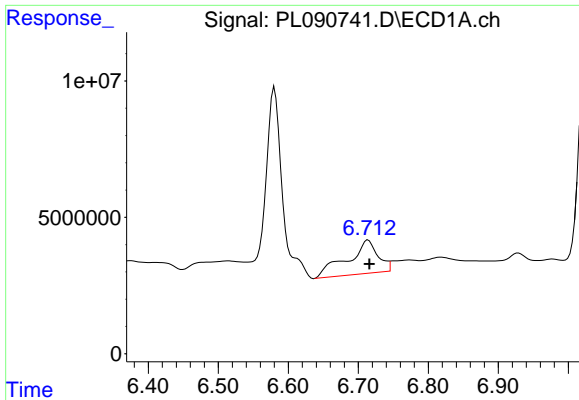
#15 Endosulfan II

R.T.: 6.818 min  
 Delta R.T.: 0.018 min  
 Response: 10870280  
 Conc: 5.53 ng/ml



#15 Endosulfan II

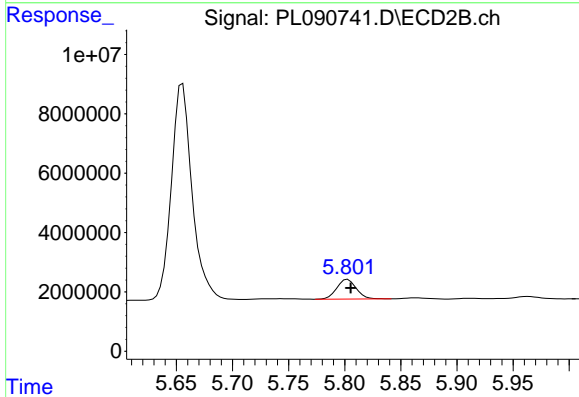
R.T.: 5.963 min  
 Delta R.T.: 0.012 min  
 Response: 1159059  
 Conc: 0.68 ng/ml



#16 4,4'-DDD

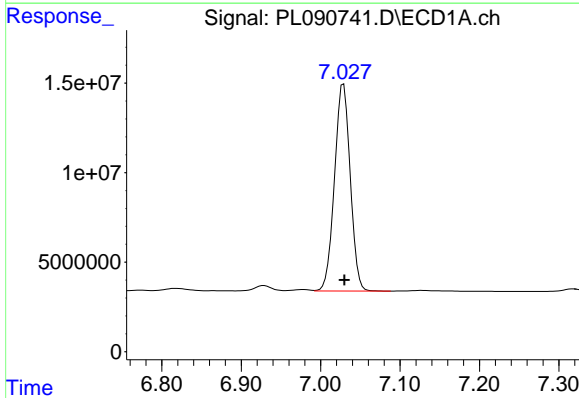
R.T.: 6.714 min  
 Delta R.T.: -0.002 min  
 Response: 37266433  
 Conc: 22.07 ng/ml

Instrument :  
 ECD\_L  
 ClientSampleId :



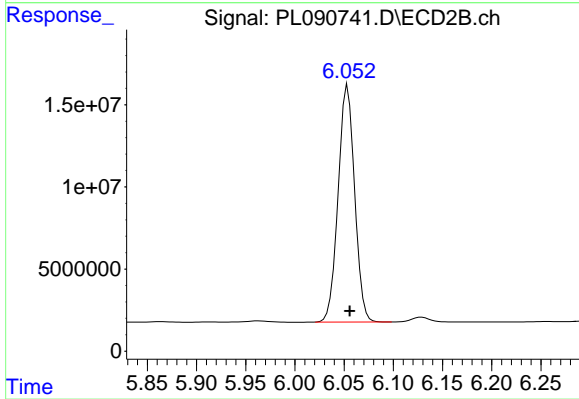
#16 4,4'-DDD

R.T.: 5.803 min  
 Delta R.T.: -0.002 min  
 Response: 7998211  
 Conc: 5.34 ng/ml



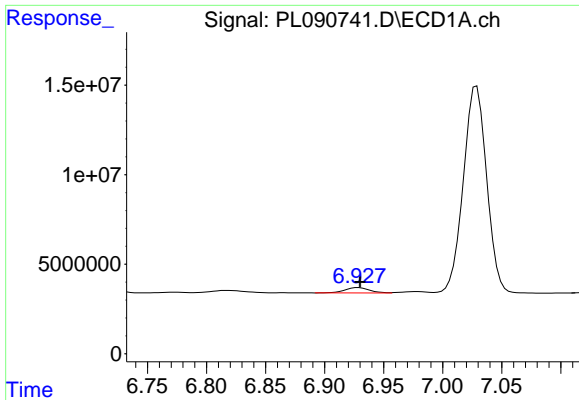
#17 4,4'-DDT

R.T.: 7.029 min  
 Delta R.T.: -0.001 min  
 Response: 159306823  
 Conc: 94.64 ng/ml



#17 4,4'-DDT

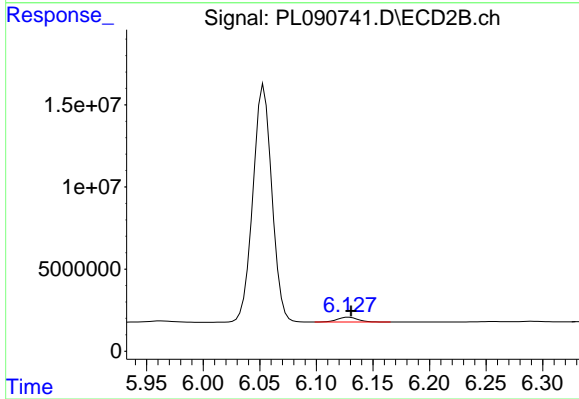
R.T.: 6.054 min  
 Delta R.T.: -0.002 min  
 Response: 168126466  
 Conc: 114.75 ng/ml



#18 Endrin aldehyde

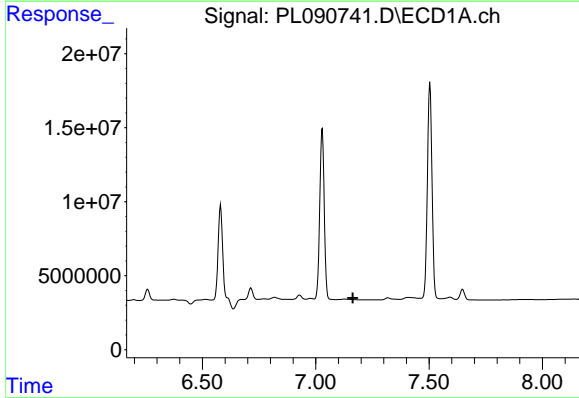
R.T.: 6.929 min  
 Delta R.T.: -0.001 min  
 Response: 4303647  
 Conc: 2.90 ng/ml

Instrument :  
 ECD\_L  
 ClientSampleId :



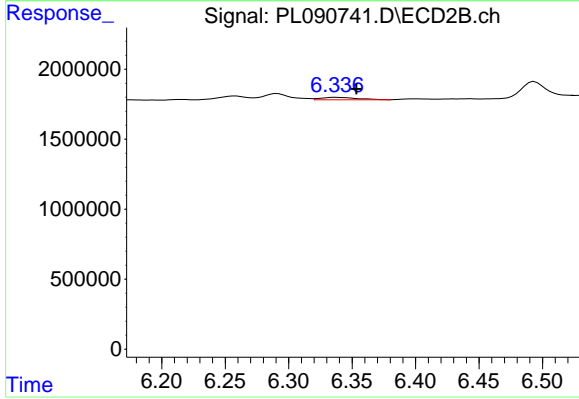
#18 Endrin aldehyde

R.T.: 6.129 min  
 Delta R.T.: -0.002 min  
 Response: 3738626  
 Conc: 2.86 ng/ml



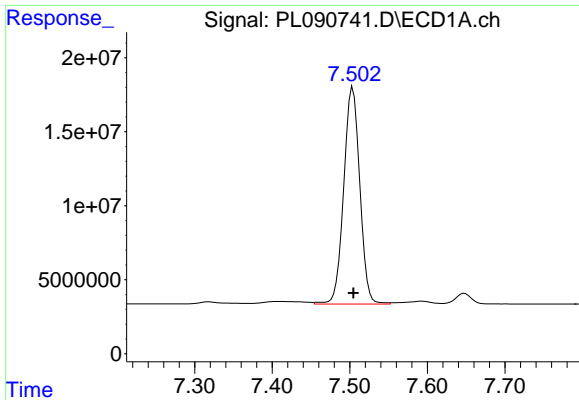
#19 Endosulfan Sulfate

R.T.: 0.000 min  
 Exp R.T. : 7.164 min  
 Response: 0  
 Conc: N.D.



#19 Endosulfan Sulfate

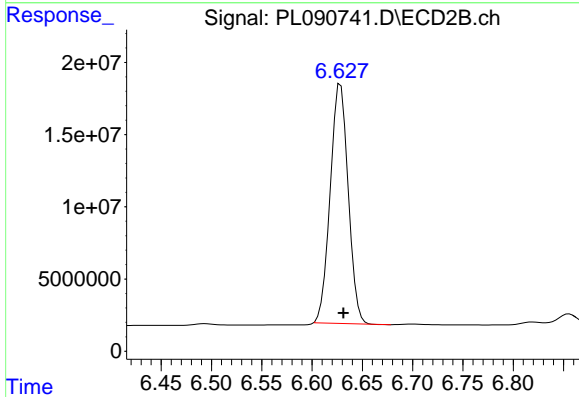
R.T.: 6.338 min  
 Delta R.T.: -0.016 min  
 Response: 346657  
 Conc: 0.21 ng/ml



#20 Methoxychlor

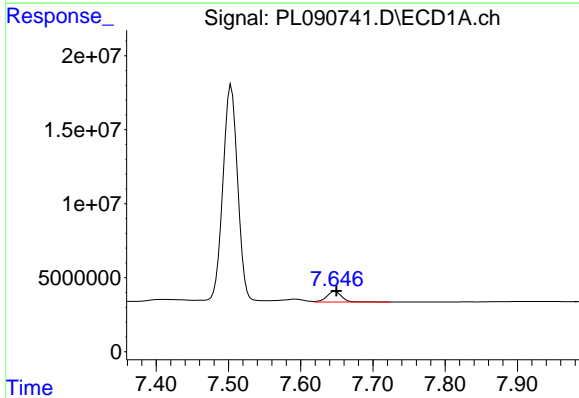
R.T.: 7.504 min  
 Delta R.T.: 0.000 min  
 Response: 210904092  
 Conc: 238.87 ng/ml

Instrument :  
 ECD\_L  
 ClientSampleId :



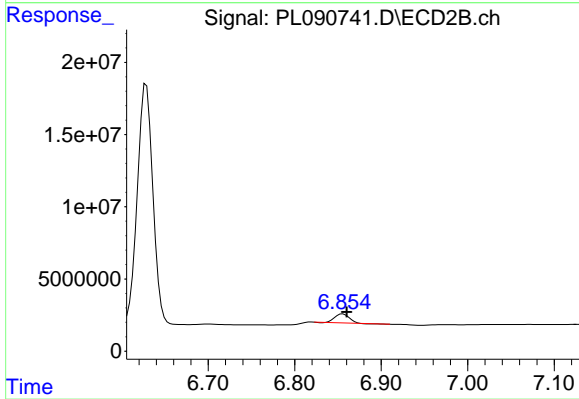
#20 Methoxychlor

R.T.: 6.628 min  
 Delta R.T.: -0.003 min  
 Response: 205812993  
 Conc: 254.55 ng/ml



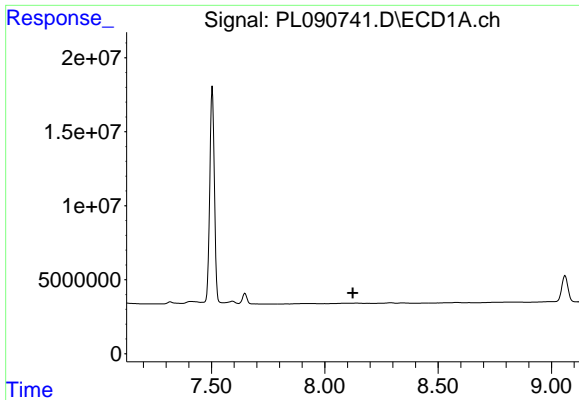
#21 Endrin ketone

R.T.: 7.648 min  
 Delta R.T.: -0.002 min  
 Response: 10304223  
 Conc: 5.40 ng/ml



#21 Endrin ketone

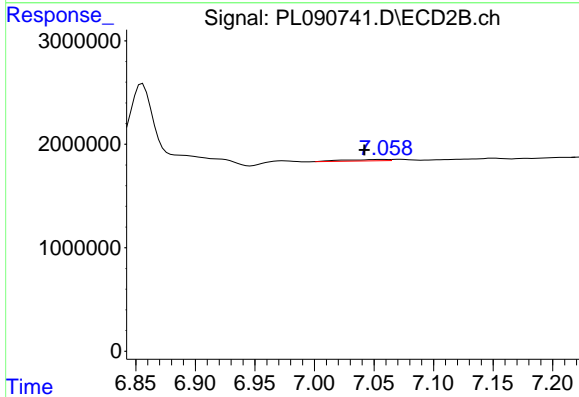
R.T.: 6.856 min  
 Delta R.T.: -0.004 min  
 Response: 6839092  
 Conc: 3.74 ng/ml



#22 Mirex

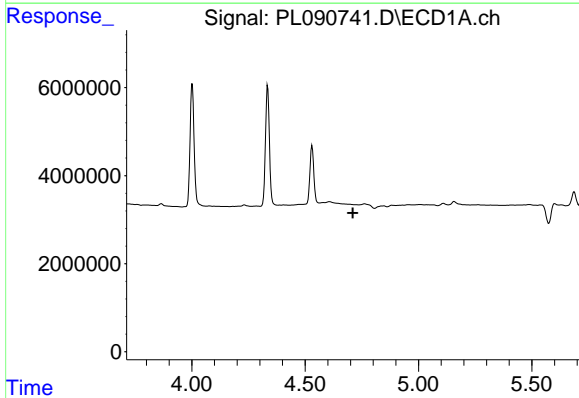
R.T.: 0.000 min  
 Exp R.T.: 8.123 min  
 Response: 0  
 Conc: N.D.

Instrument :  
 ECD\_L  
 ClientSampleId :



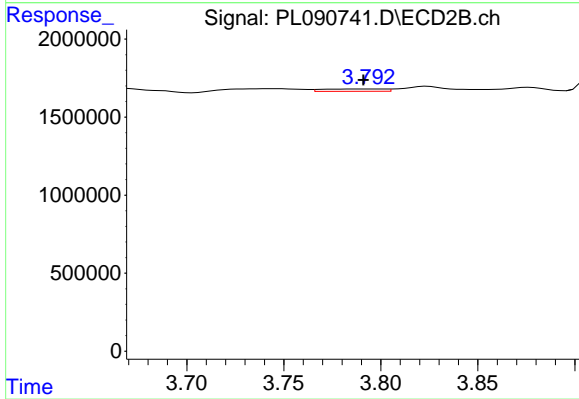
#22 Mirex

R.T.: 7.059 min  
 Delta R.T.: 0.016 min  
 Response: 372496  
 Conc: 0.25 ng/ml



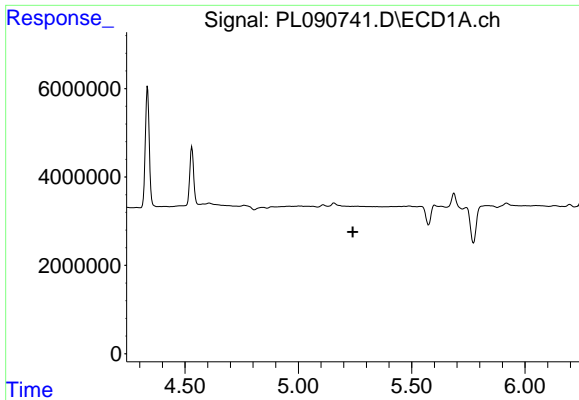
#23 Chlordane-1

R.T.: 0.000 min  
 Exp R.T.: 4.710 min  
 Response: 0  
 Conc: N.D.



#23 Chlordane-1

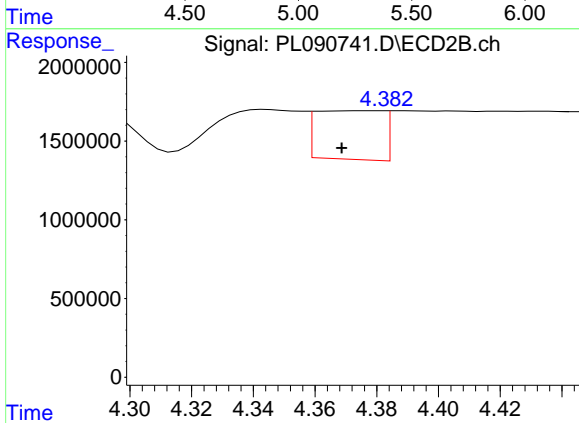
R.T.: 3.794 min  
 Delta R.T.: 0.003 min  
 Response: 329268  
 Conc: 5.32 ng/ml



#24 Chlordane-2

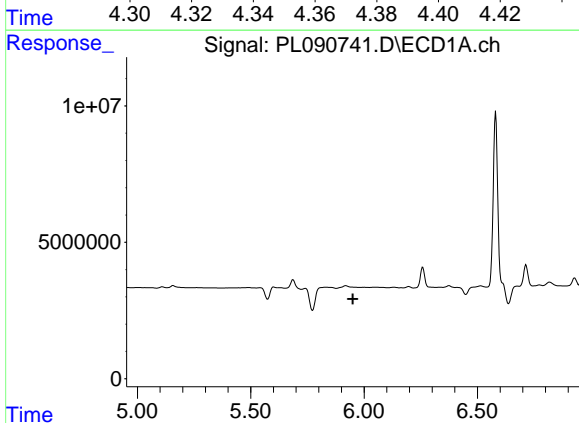
R.T.: 0.000 min  
 Exp R.T. : 5.240 min  
 Response: 0  
 Conc: N.D.

Instrument :  
 ECD\_L  
 ClientSampleId :



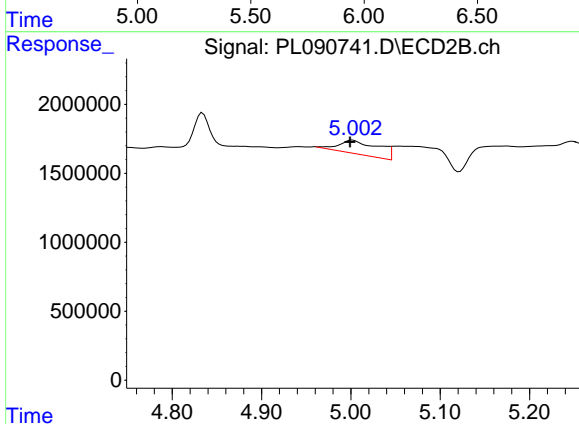
#24 Chlordane-2

R.T.: 4.376 min  
 Delta R.T.: 0.008 min  
 Response: 4664231  
 Conc: 61.50 ng/ml



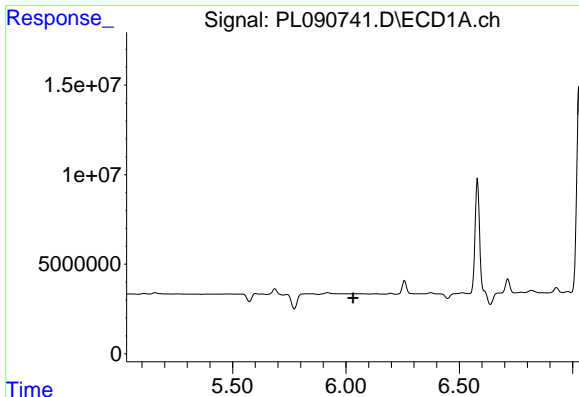
#25 Chlordane-3

R.T.: 0.000 min  
 Exp R.T. : 5.950 min  
 Response: 0  
 Conc: N.D.



#25 Chlordane-3

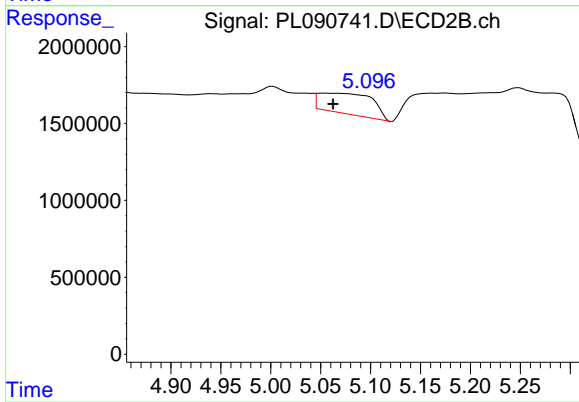
R.T.: 5.002 min  
 Delta R.T.: 0.003 min  
 Response: 3113197  
 Conc: 15.06 ng/ml



#26 Chlordane-4

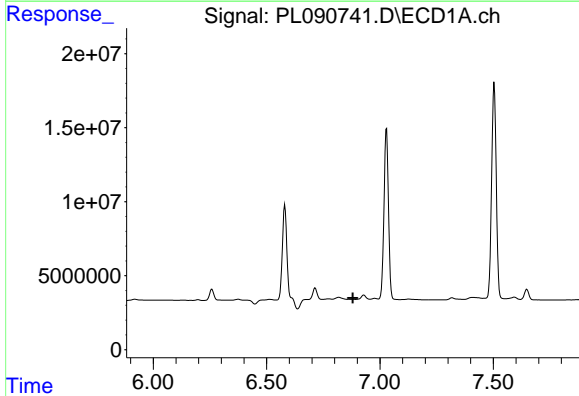
R.T.: 0.000 min  
 Exp R.T. : 6.032 min  
 Response: 0  
 Conc: N.D.

Instrument :  
 ECD\_L  
 ClientSampleId :



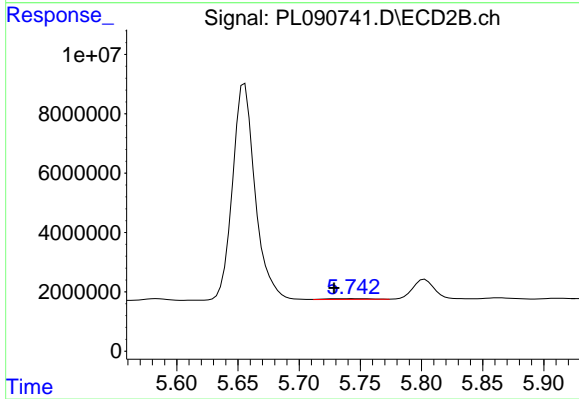
#26 Chlordane-4

R.T.: 5.053 min  
 Delta R.T.: -0.009 min  
 Response: 4969145  
 Conc: 25.39 ng/ml



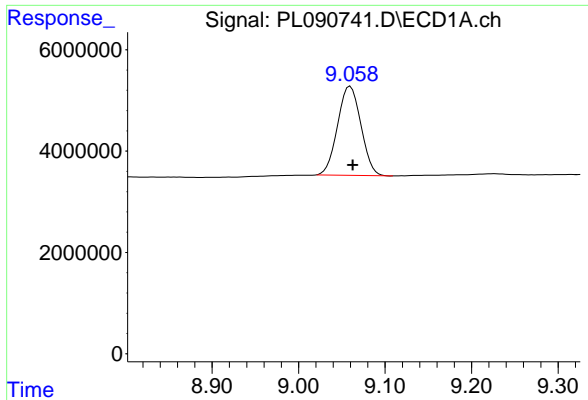
#27 Chlordane-5

R.T.: 0.000 min  
 Exp R.T. : 6.880 min  
 Response: 0  
 Conc: N.D.



#27 Chlordane-5

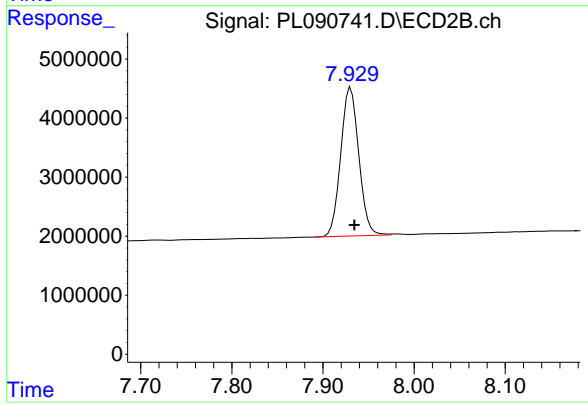
R.T.: 5.746 min  
 Delta R.T.: 0.018 min  
 Response: 547811  
 Conc: 9.09 ng/ml



#28 Decachlorobiphenyl

R.T.: 9.060 min  
Delta R.T.: -0.003 min  
Response: 32870453  
Conc: 24.74 ng/ml

Instrument :  
ECD\_L  
ClientSampleId :



#28 Decachlorobiphenyl

R.T.: 7.930 min  
Delta R.T.: -0.004 min  
Response: 34687796  
Conc: 23.79 ng/ml