

Data Path : Z:\pestpcbsrv\HPCHEM1\ECD_L\Data\PL080224\
 Data File : PL090763.D
 Signal(s) : Signal #1: ECD1A.ch Signal #2: ECD2B.ch
 Acq On : 02 Aug 2024 17:29
 Operator : AR\AJ
 Sample : P3448-09
 Misc :
 ALS Vial : 23 Sample Multiplier: 1

Instrument :
 ECD_L
 ClientSampleId :
 TP5

Integration File signal 1: autoint1.e
 Integration File signal 2: autoint2.e
 Quant Time: Aug 03 00:37:59 2024
 Quant Method : Z:\pestpcbsrv\HPCHEM1\ECD_L\methods\PL071524.M
 Quant Title : GC Extractables
 QLast Update : Mon Jul 15 14:16:48 2024
 Response via : Initial Calibration
 Integrator: ChemStation

Volume Inj. : 1 µl
 Signal #1 Phase : ZB-MR2 Signal #2 Phase: ZB-MR1
 Signal #1 Info : 30M x 0.32mm x0.2 Signal #2 Info : 30M x 0.32mm x0.5µm

Compound	RT#1	RT#2	Resp#1	Resp#2	ng/ml	ng/ml
System Monitoring Compounds						
1) SA Tetrachlo...	3.544	2.786	24049108	22882161	11.550	13.596
28) SA Decachlor...	9.054	7.927	15191759	17439600	11.432	11.961
Target Compounds						
2) A alpha-BHC	0.000	3.277f	0	269070	N.D.	0.111 #
3) MA gamma-BHC...	0.000	3.627	0	1641113	N.D.	0.712 #
4) MA Heptachlor	0.000	3.984f	0	54434	N.D.	0.025 #
5) MB Aldrin	0.000	4.237	0	166891	N.D.	0.078 #
6) B beta-BHC	0.000	3.926	0	919618	N.D.	0.891 #
7) B delta-BHC	0.000	4.144	0	371335	N.D.	0.169 #
8) B Heptachlo...	0.000	4.725f	0	49994	N.D.	0.026 #
9) A Endosulfan I	0.000	5.141f	0	2789373	N.D.	1.525 #
10) B gamma-Chl...	5.917f	4.993	5341978	750837	2.298	0.370 #
11) B alpha-Chl...	6.020	5.056	3908250	885403	1.702	0.438 #
12) B 4,4'-DDE	0.000	5.247	0	48725	N.D.	0.027 #
13) MA Dieldrin	6.369f	5.385	2649016	2145569	1.192	1.094
14) MA Endrin	6.590	5.667	6647052	425882	3.616	0.247 #
15) B Endosulfa...	6.824f	5.953	12894736	1049286	6.556	0.614 #
16) A 4,4'-DDD	6.702	5.802	8568828	852574	5.076	0.569 #
17) MA 4,4'-DDT	7.030	6.049	5403668	1138615	3.210	0.777 #
18) B Endrin al...	6.936	6.144	21952072	283875	14.796	0.217 #
19) B Endosulfa...	0.000	6.367	0	1374634	N.D.	0.852 #
20) A Methoxychlor	7.501	6.657f	2864624	866249	3.245	1.071 #
21) B Endrin ke...	7.669f	6.887f	850874	-227457	0.446	N.D. #
23) Chlordane-1	0.000	3.770f	0	288526	N.D.	4.660 #
24) Chlordane-2	0.000	4.372	0	382595	N.D.	5.045 #
25) Chlordane-3	0.000	4.993	0	750837	N.D.	3.633 #
26) Chlordane-4	6.020	5.056	3908250	885403	9.812	4.524 #
27) Chlordane-5	0.000	5.744	0	2296622	N.D.	38.101 #

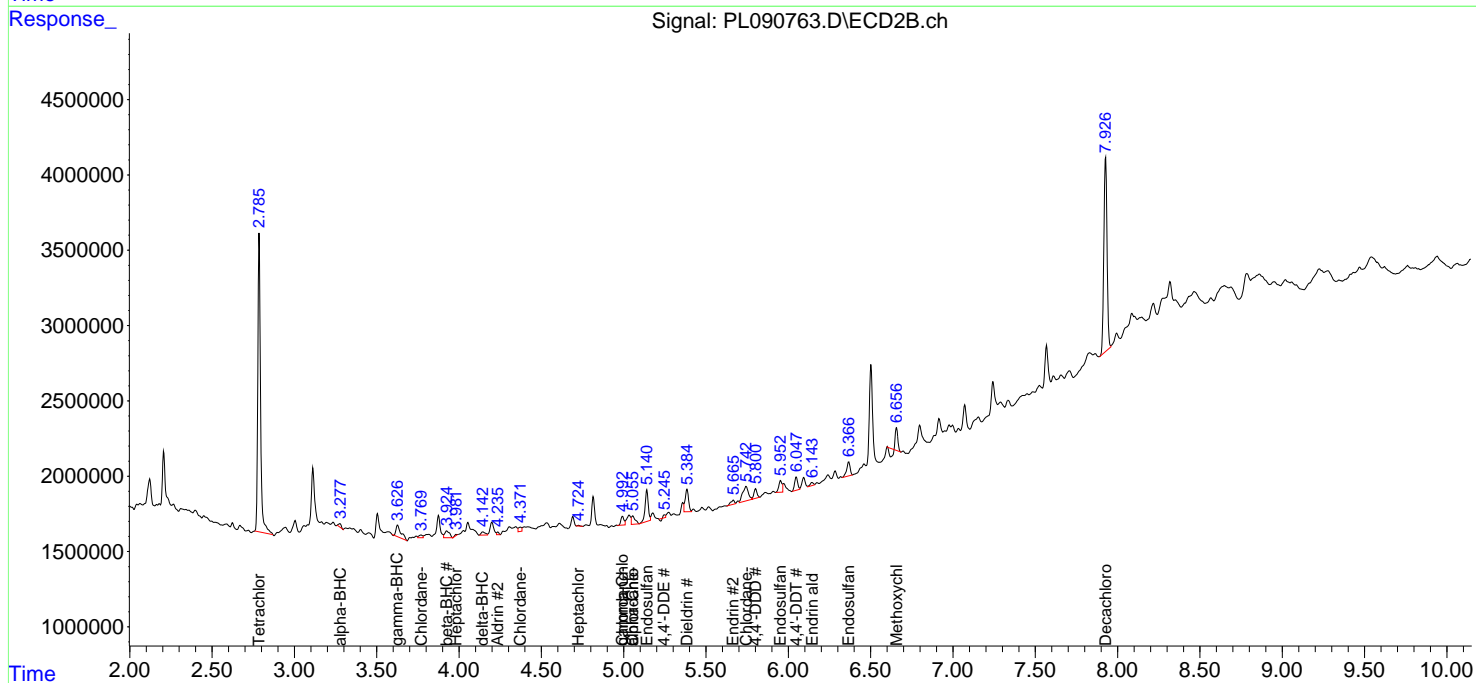
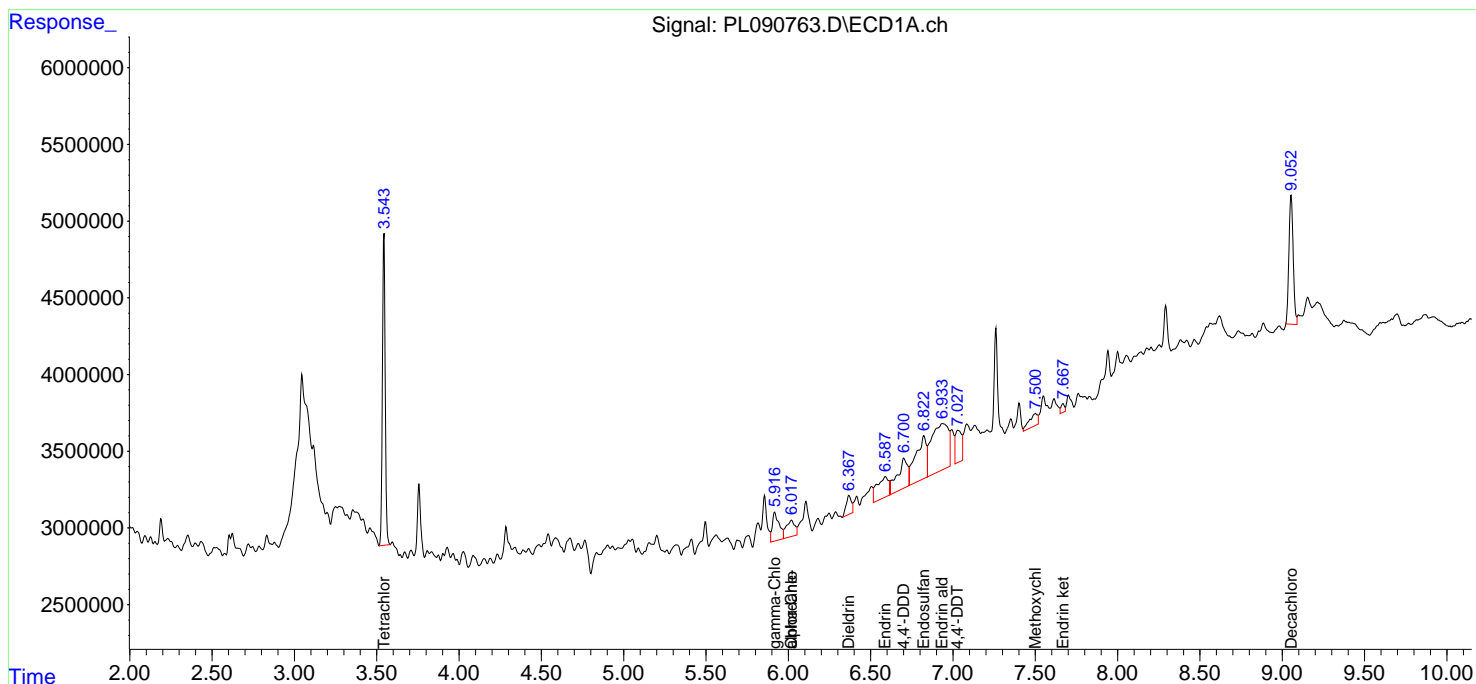
(f)=RT Delta > 1/2 Window (#)=Amounts differ by > 25% (m)=manual int.

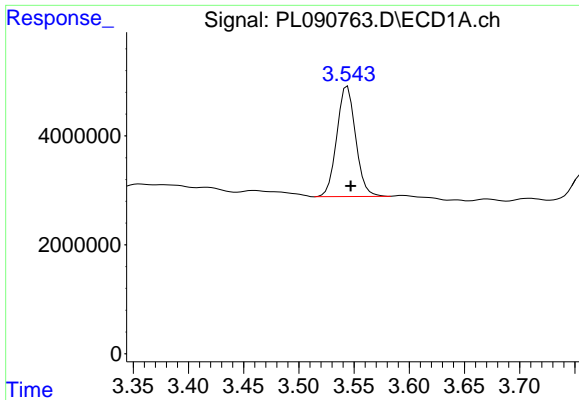
Data Path : Z:\pestpcbsrv\HPCHEM1\ECD_L\Data\PL080224\
 Data File : PL090763.D
 Signal(s) : Signal #1: ECD1A.ch Signal #2: ECD2B.ch
 Acq On : 02 Aug 2024 17:29
 Operator : AR\AJ
 Sample : P3448-09
 Misc :
 ALS Vial : 23 Sample Multiplier: 1

Instrument :
 ECD_L
 ClientSampleId :
 TP5

Integration File signal 1: autoint1.e
 Integration File signal 2: autoint2.e
 Quant Time: Aug 03 00:37:59 2024
 Quant Method : Z:\pestpcbsrv\HPCHEM1\ECD_L\methods\PL071524.M
 Quant Title : GC Extractables
 QLast Update : Mon Jul 15 14:16:48 2024
 Response via : Initial Calibration
 Integrator: ChemStation

Volume Inj. : 1 µl
 Signal #1 Phase : ZB-MR2 Signal #2 Phase: ZB-MR1
 Signal #1 Info : 30M x 0.32mm x0.2 Signal #2 Info : 30M x 0.32mm x0.5µm

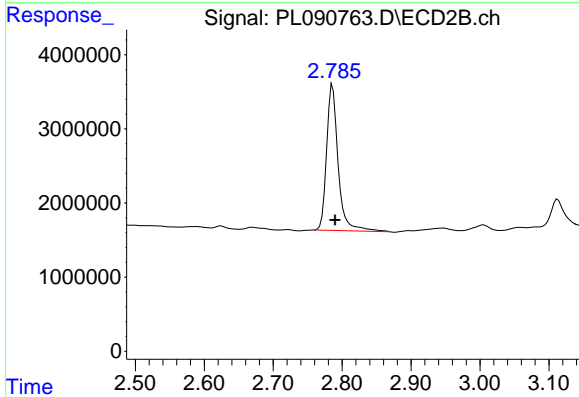




#1 Tetrachloro-m-xylene

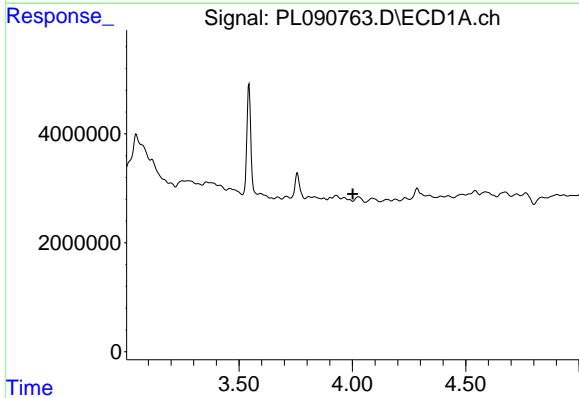
R.T.: 3.544 min
 Delta R.T.: -0.003 min
 Response: 24049108
 Conc: 11.55 ng/ml

Instrument :
 ECD_L
 ClientSampleId :
 TP5



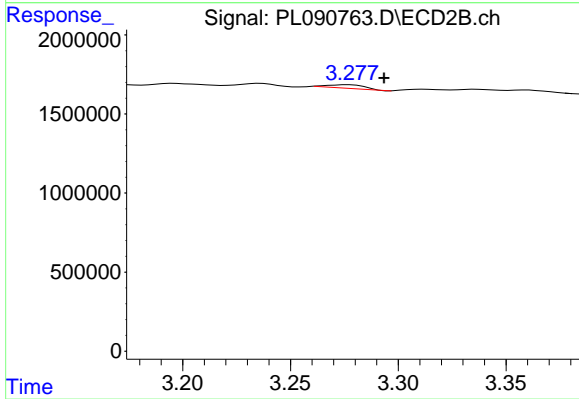
#1 Tetrachloro-m-xylene

R.T.: 2.786 min
 Delta R.T.: -0.004 min
 Response: 22882161
 Conc: 13.60 ng/ml



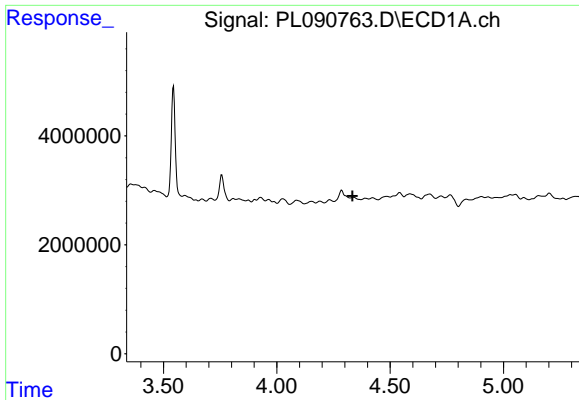
#2 alpha-BHC

R.T.: 0.000 min
 Exp R.T. : 4.002 min
 Response: 0
 Conc: N.D.



#2 alpha-BHC

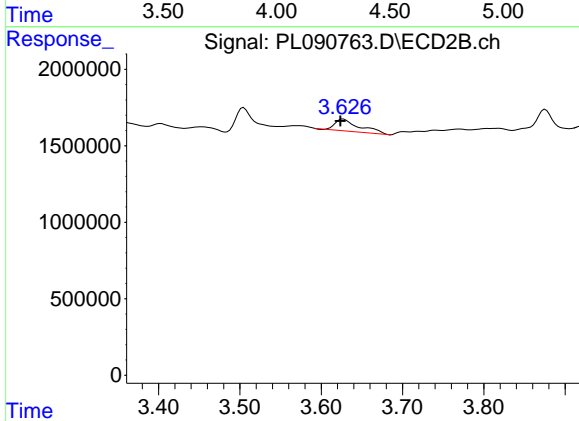
R.T.: 3.277 min
 Delta R.T.: -0.016 min
 Response: 269070
 Conc: 0.11 ng/ml



#3 gamma-BHC (Lindane)

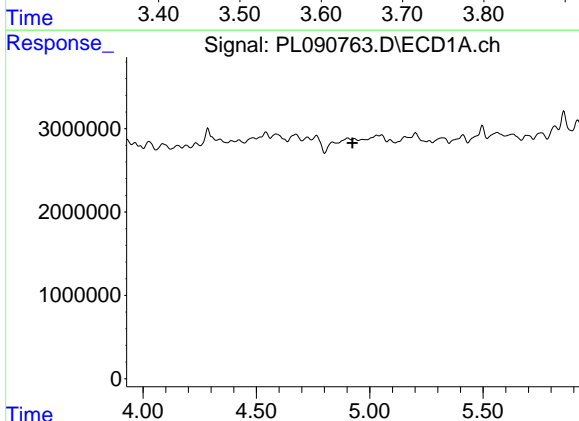
R.T.: 0.000 min
 Exp R.T.: 4.335 min
 Response: 0
 Conc: N.D.

Instrument :
 ECD_L
 ClientSampleId :
 TP5



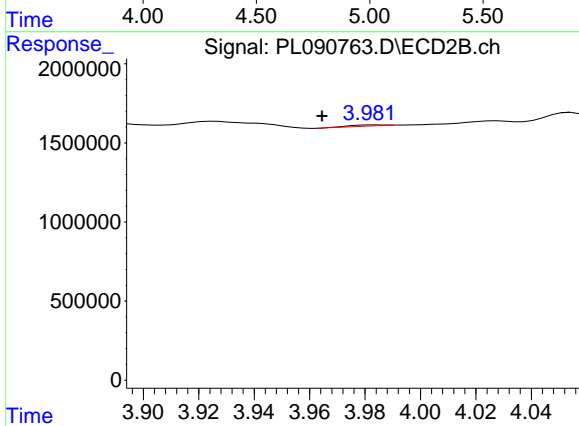
#3 gamma-BHC (Lindane)

R.T.: 3.627 min
 Delta R.T.: 0.003 min
 Response: 1641113
 Conc: 0.71 ng/ml



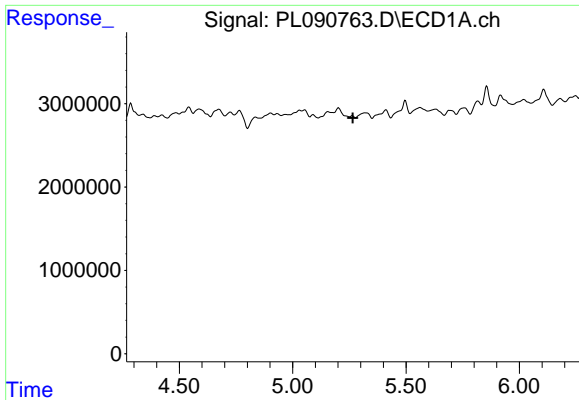
#4 Heptachlor

R.T.: 0.000 min
 Exp R.T.: 4.924 min
 Response: 0
 Conc: N.D.



#4 Heptachlor

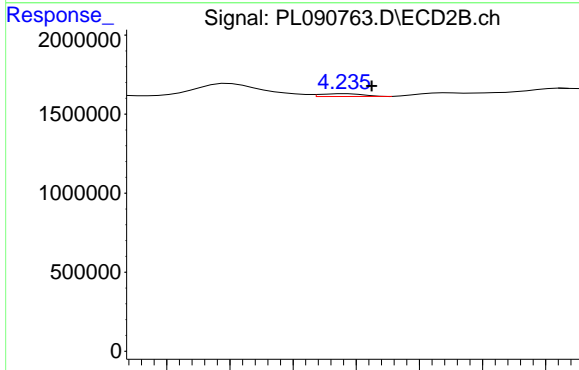
R.T.: 3.984 min
 Delta R.T.: 0.019 min
 Response: 54434
 Conc: 0.02 ng/ml



#5 Aldrin

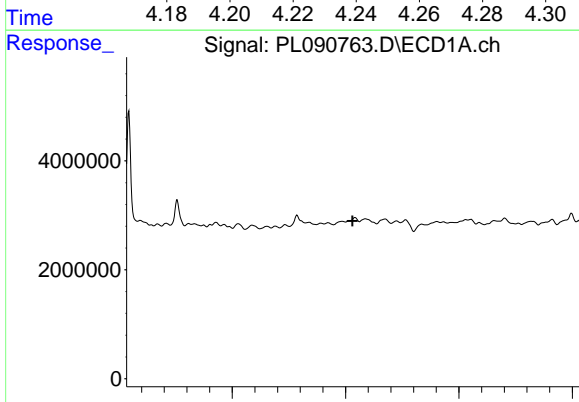
R.T.: 0.000 min
 Exp R.T.: 5.266 min
 Response: 0
 Conc: N.D.

Instrument :
 ECD_L
 ClientSampleId :
 TP5



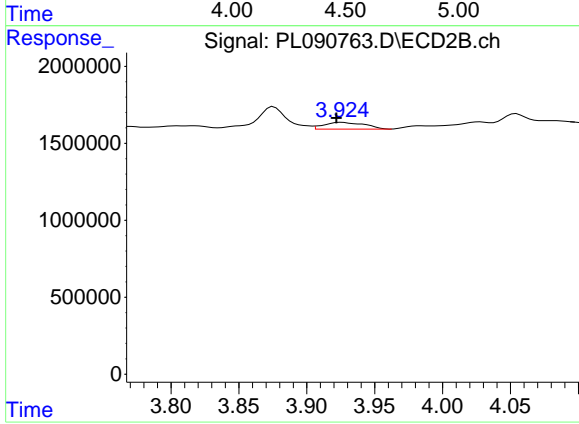
#5 Aldrin

R.T.: 4.237 min
 Delta R.T.: -0.008 min
 Response: 166891
 Conc: 0.08 ng/ml



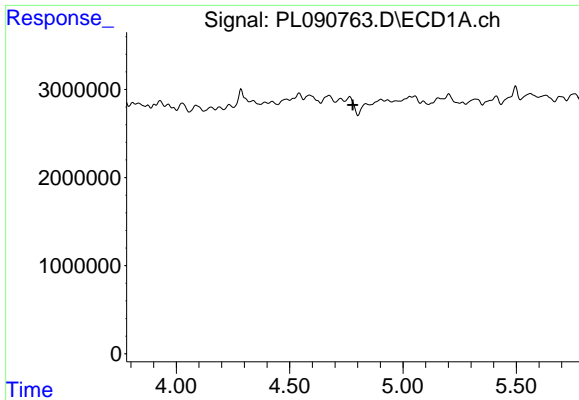
#6 beta-BHC

R.T.: 0.000 min
 Exp R.T.: 4.531 min
 Response: 0
 Conc: N.D.



#6 beta-BHC

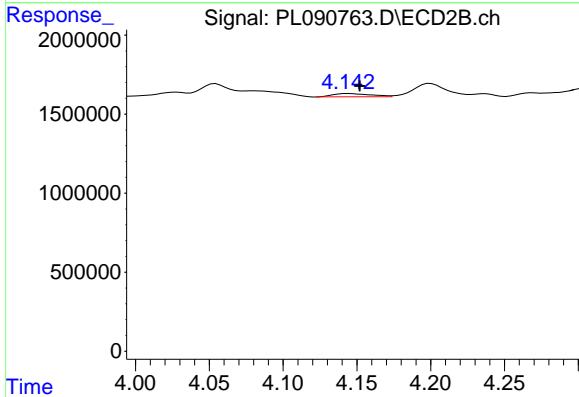
R.T.: 3.926 min
 Delta R.T.: 0.004 min
 Response: 919618
 Conc: 0.89 ng/ml



#7 delta-BHC

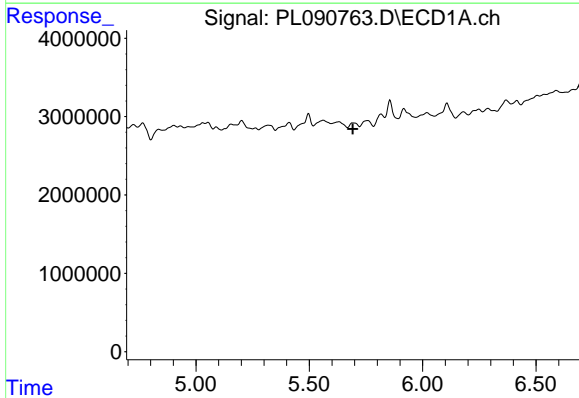
R.T.: 0.000 min
 Exp R.T.: 4.778 min
 Response: 0
 Conc: N.D.

Instrument :
 ECD_L
 ClientSampleId :
 TP5



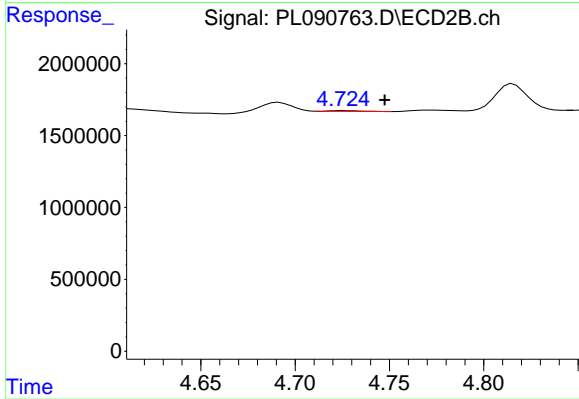
#7 delta-BHC

R.T.: 4.144 min
 Delta R.T.: -0.008 min
 Response: 371335
 Conc: 0.17 ng/ml



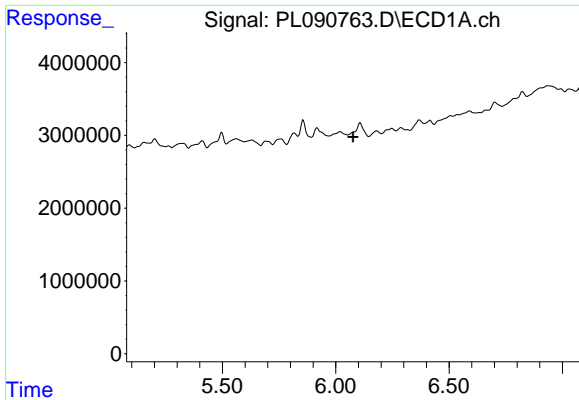
#8 Heptachlor epoxide

R.T.: 0.000 min
 Exp R.T.: 5.691 min
 Response: 0
 Conc: N.D.



#8 Heptachlor epoxide

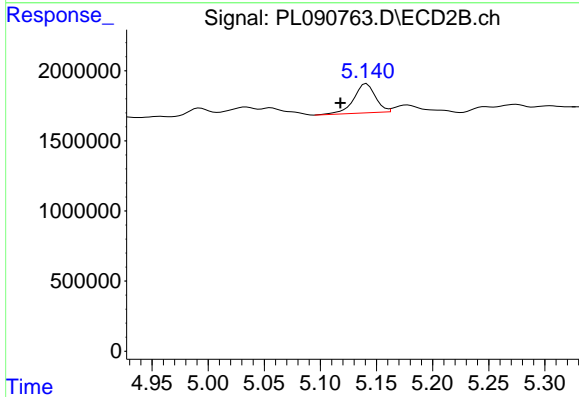
R.T.: 4.725 min
 Delta R.T.: -0.022 min
 Response: 49994
 Conc: 0.03 ng/ml



#9 Endosulfan I

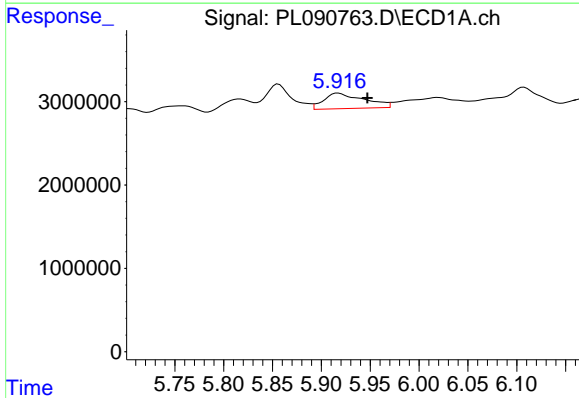
R.T.: 0.000 min
 Exp R.T.: 6.077 min
 Response: 0
 Conc: N.D.

Instrument :
 ECD_L
 ClientSampleId :
 TP5



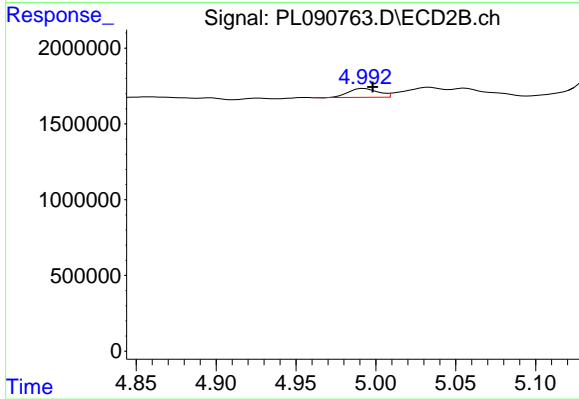
#9 Endosulfan I

R.T.: 5.141 min
 Delta R.T.: 0.024 min
 Response: 2789373
 Conc: 1.53 ng/ml



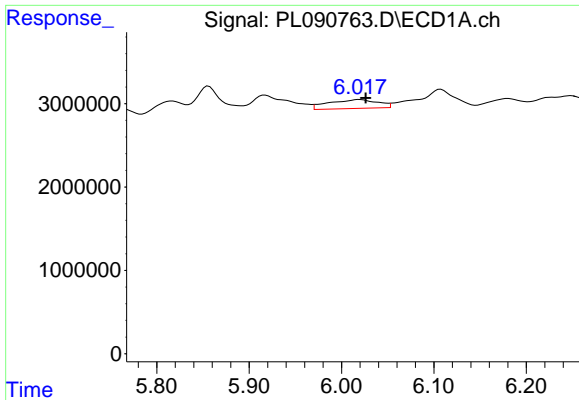
#10 gamma-Chlordane

R.T.: 5.917 min
 Delta R.T.: -0.030 min
 Response: 5341978
 Conc: 2.30 ng/ml



#10 gamma-Chlordane

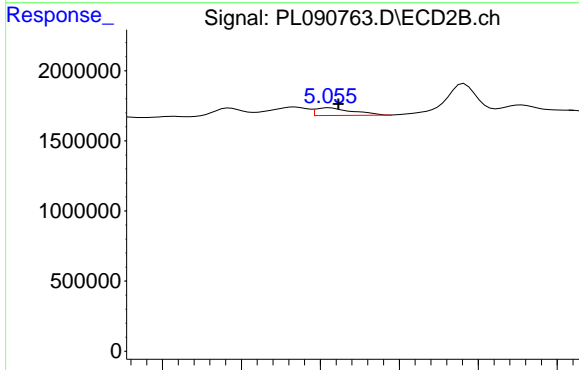
R.T.: 4.993 min
 Delta R.T.: -0.005 min
 Response: 750837
 Conc: 0.37 ng/ml



#11 alpha-Chlordane

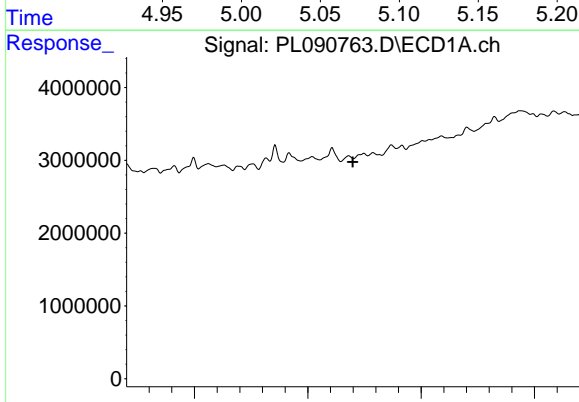
R.T.: 6.020 min
 Delta R.T.: -0.006 min
 Response: 3908250
 Conc: 1.70 ng/ml

Instrument :
 ECD_L
 ClientSampleId :
 TP5



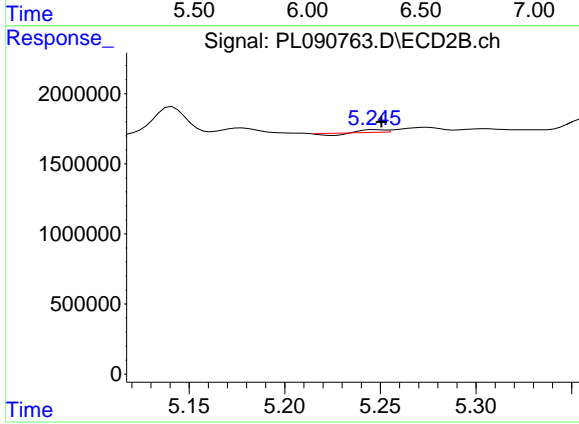
#11 alpha-Chlordane

R.T.: 5.056 min
 Delta R.T.: -0.005 min
 Response: 885403
 Conc: 0.44 ng/ml



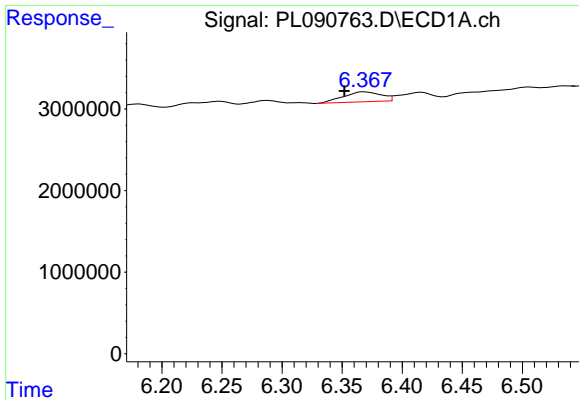
#12 4,4'-DDE

R.T.: 0.000 min
 Exp R.T. : 6.199 min
 Response: 0
 Conc: N.D.



#12 4,4'-DDE

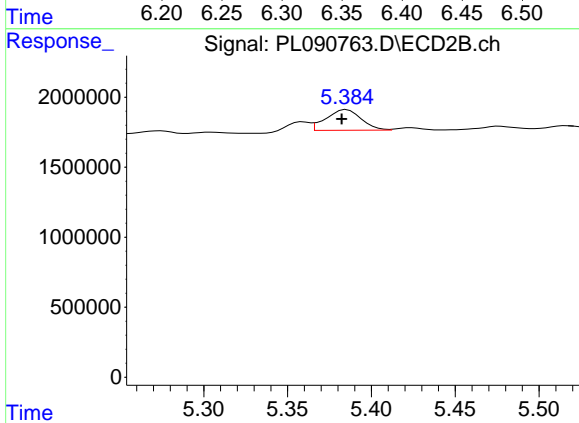
R.T.: 5.247 min
 Delta R.T.: -0.003 min
 Response: 48725
 Conc: 0.03 ng/ml



#13 Dieldrin

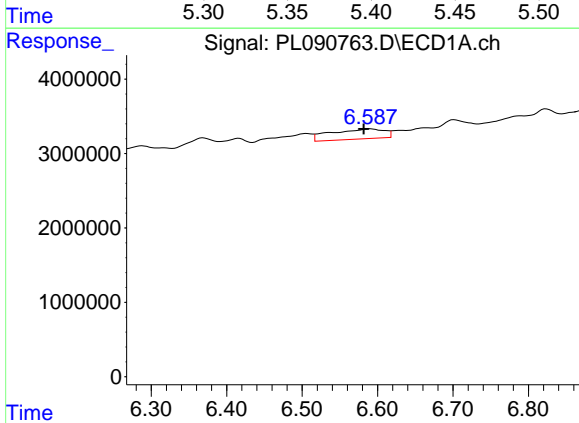
R.T.: 6.369 min
 Delta R.T.: 0.017 min
 Response: 2649016
 Conc: 1.19 ng/ml

Instrument :
 ECD_L
 ClientSampleId :
 TP5



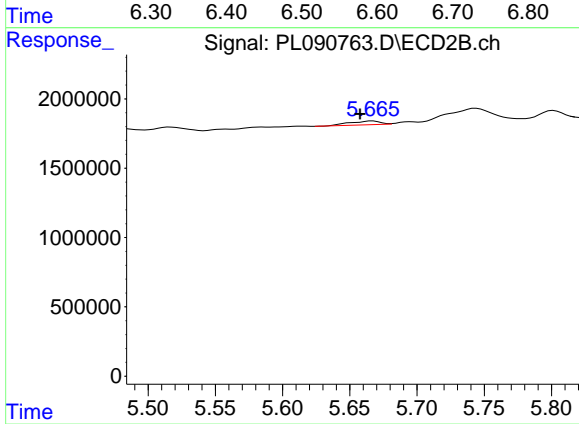
#13 Dieldrin

R.T.: 5.385 min
 Delta R.T.: 0.003 min
 Response: 2145569
 Conc: 1.09 ng/ml



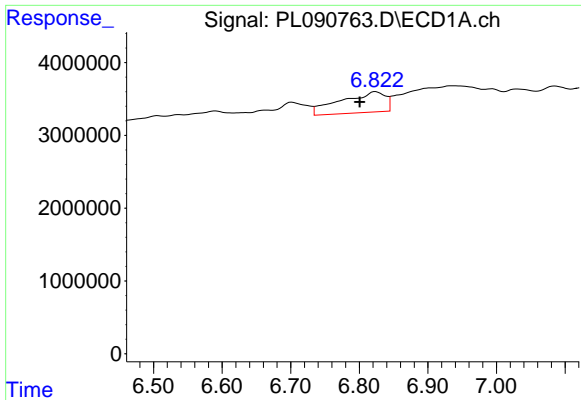
#14 Endrin

R.T.: 6.590 min
 Delta R.T.: 0.008 min
 Response: 6647052
 Conc: 3.62 ng/ml



#14 Endrin

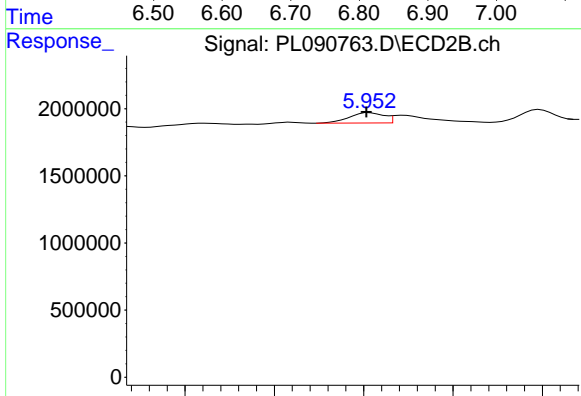
R.T.: 5.667 min
 Delta R.T.: 0.009 min
 Response: 425882
 Conc: 0.25 ng/ml



#15 Endosulfan II

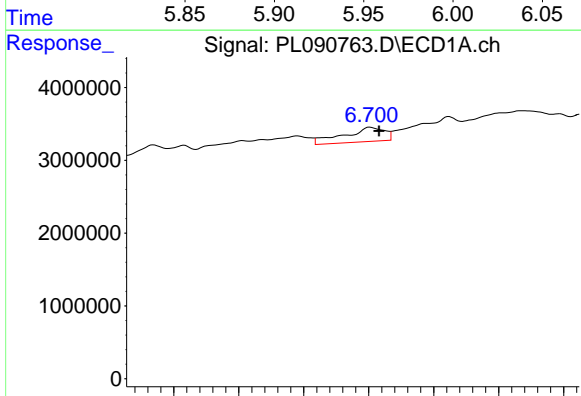
R.T.: 6.824 min
 Delta R.T.: 0.023 min
 Response: 12894736
 Conc: 6.56 ng/ml

Instrument :
 ECD_L
 ClientSampleId :
 TP5



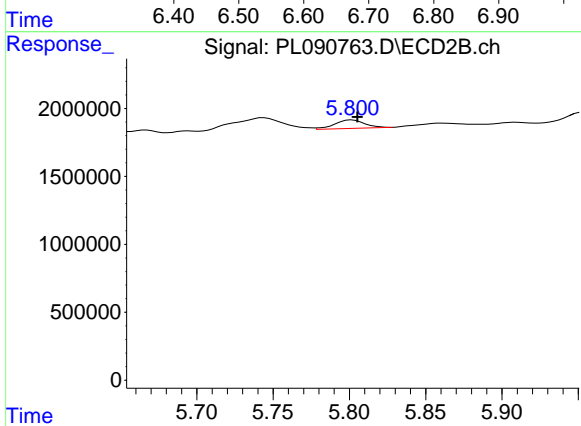
#15 Endosulfan II

R.T.: 5.953 min
 Delta R.T.: 0.002 min
 Response: 1049286
 Conc: 0.61 ng/ml



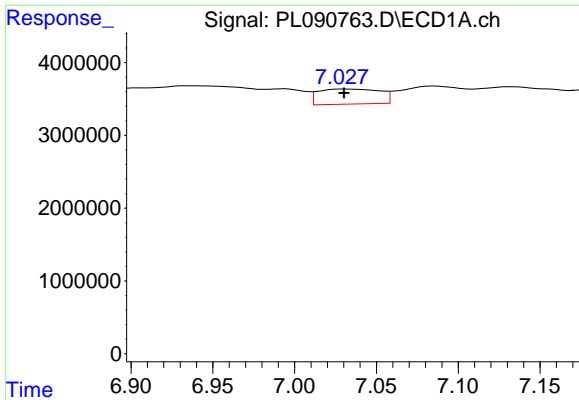
#16 4,4'-DDD

R.T.: 6.702 min
 Delta R.T.: -0.014 min
 Response: 8568828
 Conc: 5.08 ng/ml



#16 4,4'-DDD

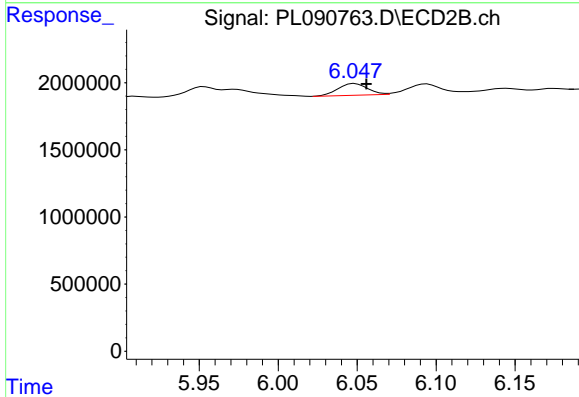
R.T.: 5.802 min
 Delta R.T.: -0.004 min
 Response: 852574
 Conc: 0.57 ng/ml



#17 4,4'-DDT

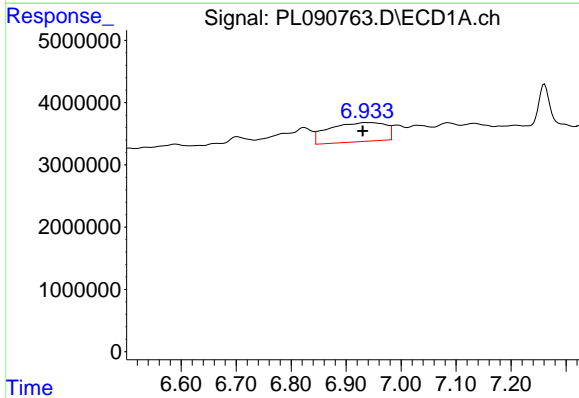
R.T.: 7.030 min
 Delta R.T.: 0.000 min
 Response: 5403668
 Conc: 3.21 ng/ml

Instrument :
 ECD_L
 ClientSampleId :
 TP5



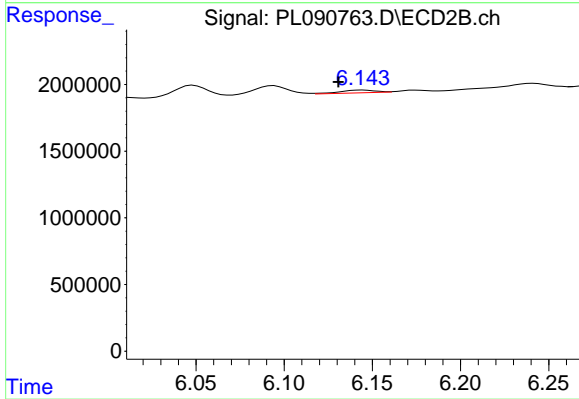
#17 4,4'-DDT

R.T.: 6.049 min
 Delta R.T.: -0.007 min
 Response: 1138615
 Conc: 0.78 ng/ml



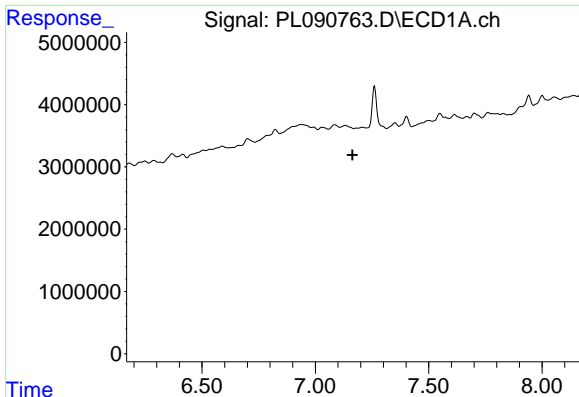
#18 Endrin aldehyde

R.T.: 6.936 min
 Delta R.T.: 0.006 min
 Response: 21952072
 Conc: 14.80 ng/ml



#18 Endrin aldehyde

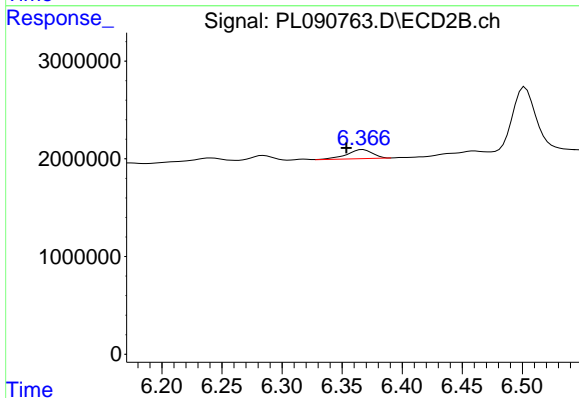
R.T.: 6.144 min
 Delta R.T.: 0.014 min
 Response: 283875
 Conc: 0.22 ng/ml



#19 Endosulfan Sulfate

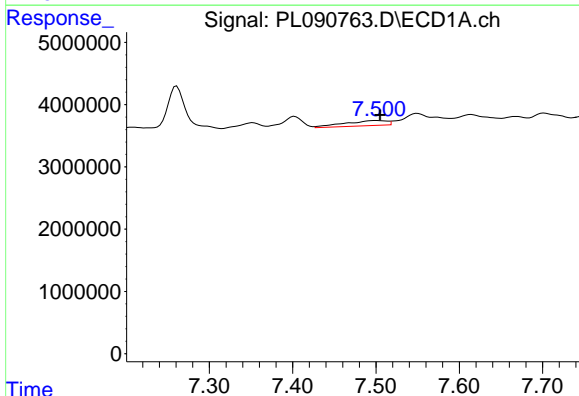
R.T.: 0.000 min
 Exp R.T.: 7.164 min
 Response: 0
 Conc: N.D.

Instrument :
 ECD_L
 ClientSampleId :
 TP5



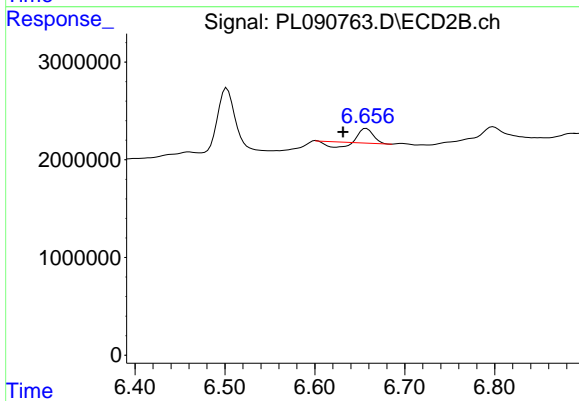
#19 Endosulfan Sulfate

R.T.: 6.367 min
 Delta R.T.: 0.014 min
 Response: 1374634
 Conc: 0.85 ng/ml



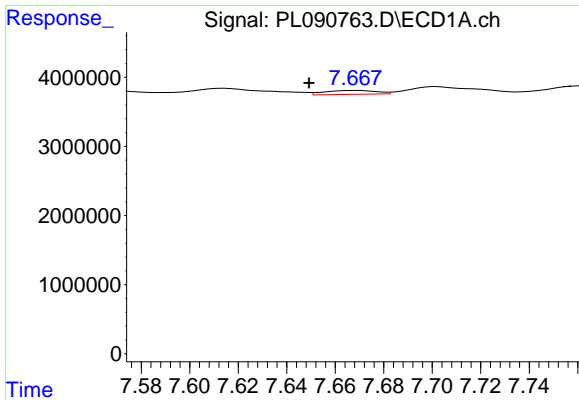
#20 Methoxychlor

R.T.: 7.501 min
 Delta R.T.: -0.003 min
 Response: 2864624
 Conc: 3.24 ng/ml



#20 Methoxychlor

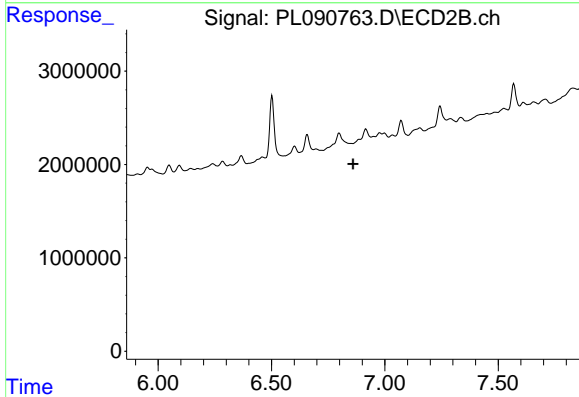
R.T.: 6.657 min
 Delta R.T.: 0.026 min
 Response: 866249
 Conc: 1.07 ng/ml



#21 Endrin ketone

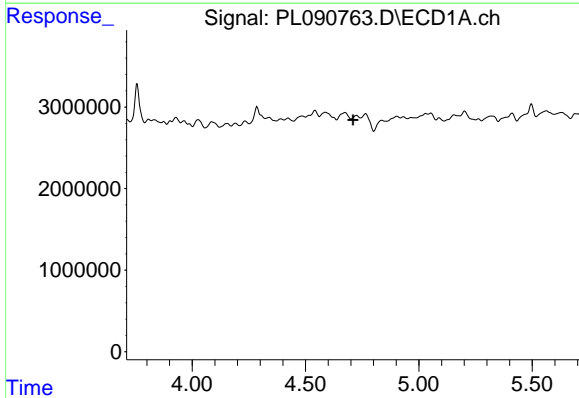
R.T.: 7.669 min
 Delta R.T.: 0.020 min
 Response: 850874
 Conc: 0.45 ng/ml

Instrument :
 ECD_L
 ClientSampleId :
 TP5



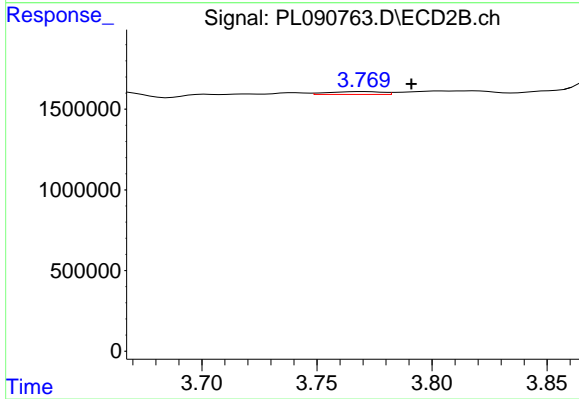
#21 Endrin ketone

R.T.: 6.887 min
 Delta R.T.: 0.027 min
 Response: -227457
 Conc: N.D.



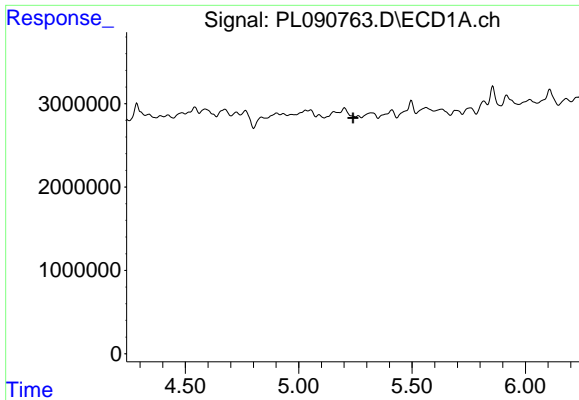
#23 Chlordane-1

R.T.: 0.000 min
 Exp R.T. : 4.710 min
 Response: 0
 Conc: N.D.



#23 Chlordane-1

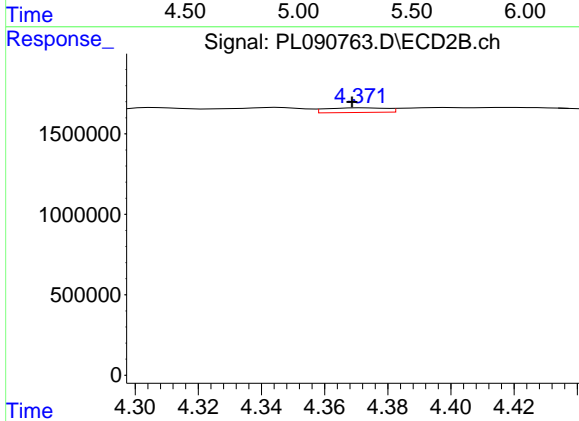
R.T.: 3.770 min
 Delta R.T.: -0.021 min
 Response: 288526
 Conc: 4.66 ng/ml



#24 Chlordane-2

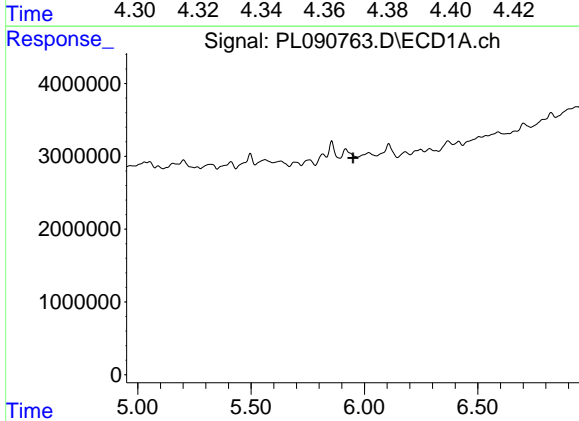
R.T.: 0.000 min
 Exp R.T.: 5.240 min
 Response: 0
 Conc: N.D.

Instrument :
 ECD_L
 ClientSampleId :
 TP5



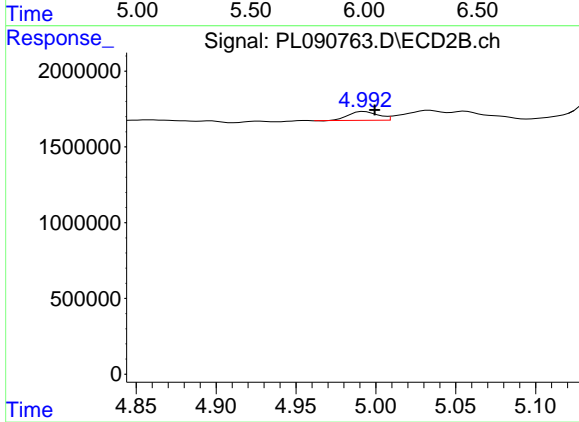
#24 Chlordane-2

R.T.: 4.372 min
 Delta R.T.: 0.004 min
 Response: 382595
 Conc: 5.04 ng/ml



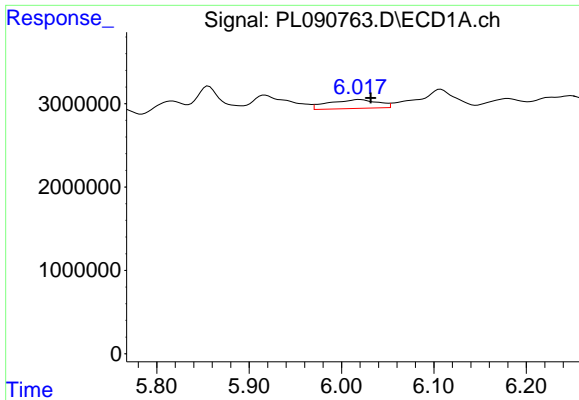
#25 Chlordane-3

R.T.: 0.000 min
 Exp R.T.: 5.950 min
 Response: 0
 Conc: N.D.



#25 Chlordane-3

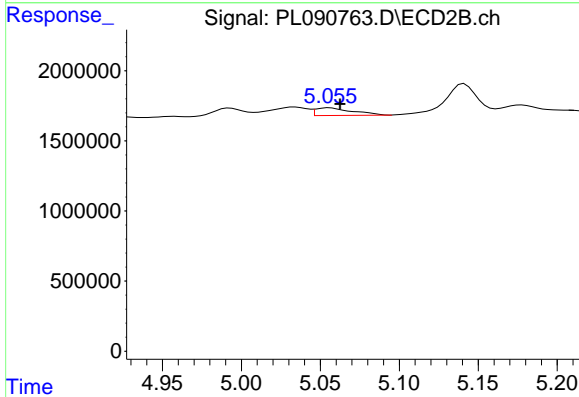
R.T.: 4.993 min
 Delta R.T.: -0.006 min
 Response: 750837
 Conc: 3.63 ng/ml



#26 Chlordane-4

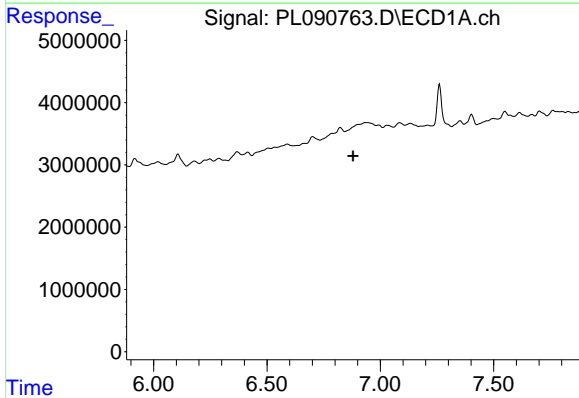
R.T.: 6.020 min
 Delta R.T.: -0.012 min
 Response: 3908250
 Conc: 9.81 ng/ml

Instrument :
 ECD_L
 ClientSampleId :
 TP5



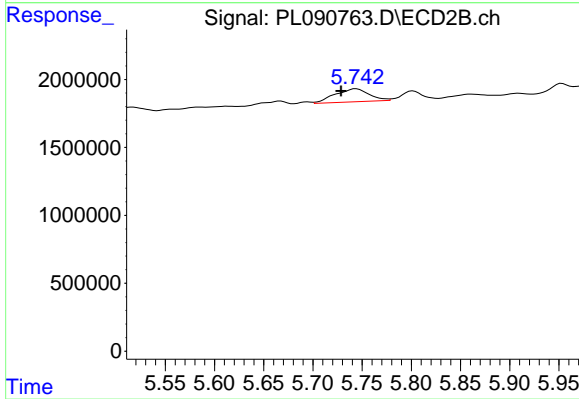
#26 Chlordane-4

R.T.: 5.056 min
 Delta R.T.: -0.006 min
 Response: 885403
 Conc: 4.52 ng/ml



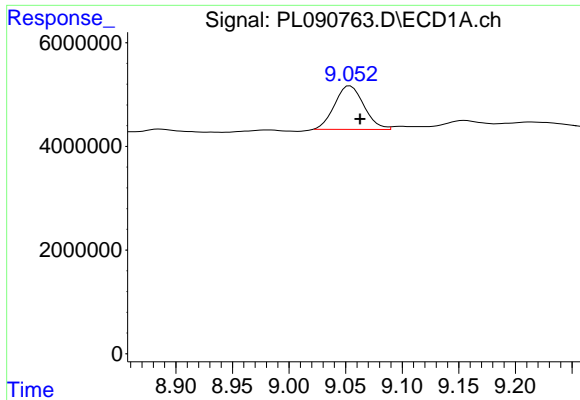
#27 Chlordane-5

R.T.: 0.000 min
 Exp R.T. : 6.880 min
 Response: 0
 Conc: N.D.



#27 Chlordane-5

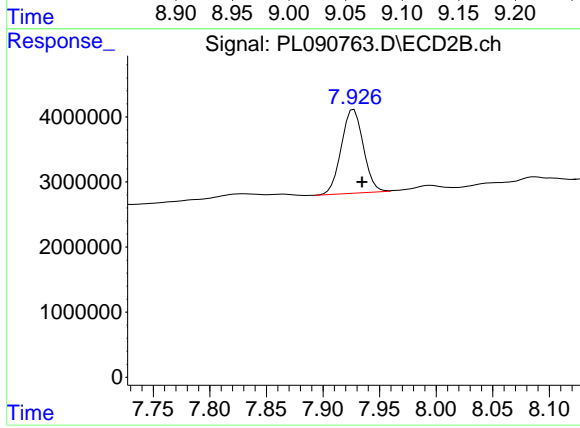
R.T.: 5.744 min
 Delta R.T.: 0.015 min
 Response: 2296622
 Conc: 38.10 ng/ml



#28 Decachlorobiphenyl

R.T.: 9.054 min
Delta R.T.: -0.009 min
Response: 15191759
Conc: 11.43 ng/ml

Instrument :
ECD_L
ClientSampleId :
TP5



#28 Decachlorobiphenyl

R.T.: 7.927 min
Delta R.T.: -0.007 min
Response: 17439600
Conc: 11.96 ng/ml