

Data Path : Z:\pestpcbsrv\HPCHEM1\ECD_L\Data\PL080421\
 Data File : PL068690.D
 Signal(s) : Signal #1: ECD1A.ch Signal #2: ECD2B.ch
 Acq On : 04 Aug 2021 19:23
 Operator : AR\AJ
 Sample : PSTDCCC050
 Misc :
 ALS Vial : 4 Sample Multiplier: 1

Instrument :
 ECD_L
 ClientSampleId :
 PSTDCCC050

Integration File signal 1: autoint1.e
 Integration File signal 2: autoint2.e
 Quant Time: Aug 05 01:47:57 2021
 Quant Method : Z:\pestpcbsrv\HPCHEM1\ECD_L\methods\PL071921.M
 Quant Title : GC Extractables
 QLast Update : Tue Jul 20 11:44:21 2021
 Response via : Initial Calibration
 Integrator: ChemStation

Volume Inj. : 1 µl
 Signal #1 Phase : ZB-MR2 Signal #2 Phase: ZB-MR1
 Signal #1 Info : 30M x 0.32mm x0.2 Signal #2 Info : 30M x 0.32mm x0.5µm

Compound	RT#1	RT#2	Resp#1	Resp#2	ng/ml	ng/ml
System Monitoring Compounds						
1) SA Tetrachlo...	4.641	5.571	21093233	53253524	49.147	52.187
28) SA Decachlor...	10.412	11.491	26943031	45015129	47.906	50.466
Target Compounds						
2) A alpha-BHC	5.348	6.151	28807259	73387825	49.210	53.977
3) MA gamma-BHC...	5.771	6.548	27817841	68987621	48.937	53.470
4) MA Heptachlor	6.182	7.197	29381827	69509940	48.205	53.333
5) MB Aldrin	6.507	7.568	27355513	63693099	48.679	53.683
6) B beta-BHC	6.150	6.799	14631063	32497166	50.000	46.000
7) B delta-BHC	6.412	7.068	27593042	64840666	49.386	52.922
8) B Heptachlo...	7.084	8.033	26748358	60001659	48.147	53.070
9) A Endosulfan I	7.487	8.439	25367065	54303982	48.019	52.744
10) B gamma-Chl...	7.362	8.303	27366923	59753967	47.697	53.058
11) B alpha-Chl...	7.431	8.384	27381603	59203964	47.674	52.639
12) B 4,4'-DDE	7.645	8.570	24337940	54263629	48.297	52.654
13) MA Dieldrin	7.773	8.728	26288749	55840200	48.838	52.647
14) MA Endrin	8.065	8.967	23319860	44851498	46.631	50.160
15) B Endosulfa...	8.375	9.200	23424686	45921612	47.446	50.664
16) A 4,4'-DDD	8.230	9.109	22590185	45819761	50.573	53.812
17) MA 4,4'-DDT	8.492	9.426	22044983	44156051	43.950	46.783
18) B Endrin al...	8.563	9.335	19028161	36626614	48.035	50.819
19) B Endosulfa...	8.794	9.572	24980850	45220257	47.540	50.218
20) A Methoxychlor	9.086	9.910	13779976	23344826	44.052	45.951
21) B Endrin ke...	9.313	10.070	29334557	50832472	49.542	50.969
22) Mirex	9.501	10.537	24256263	38439243	49.119	49.686

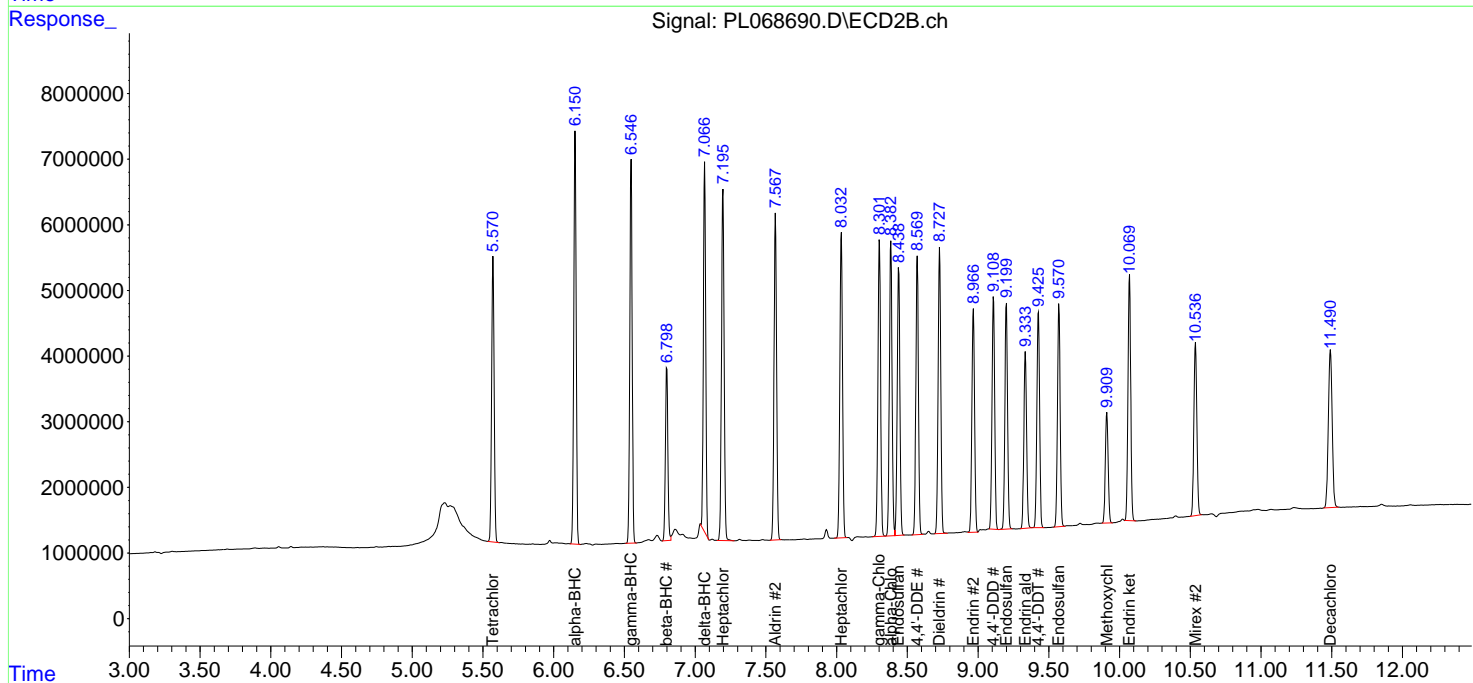
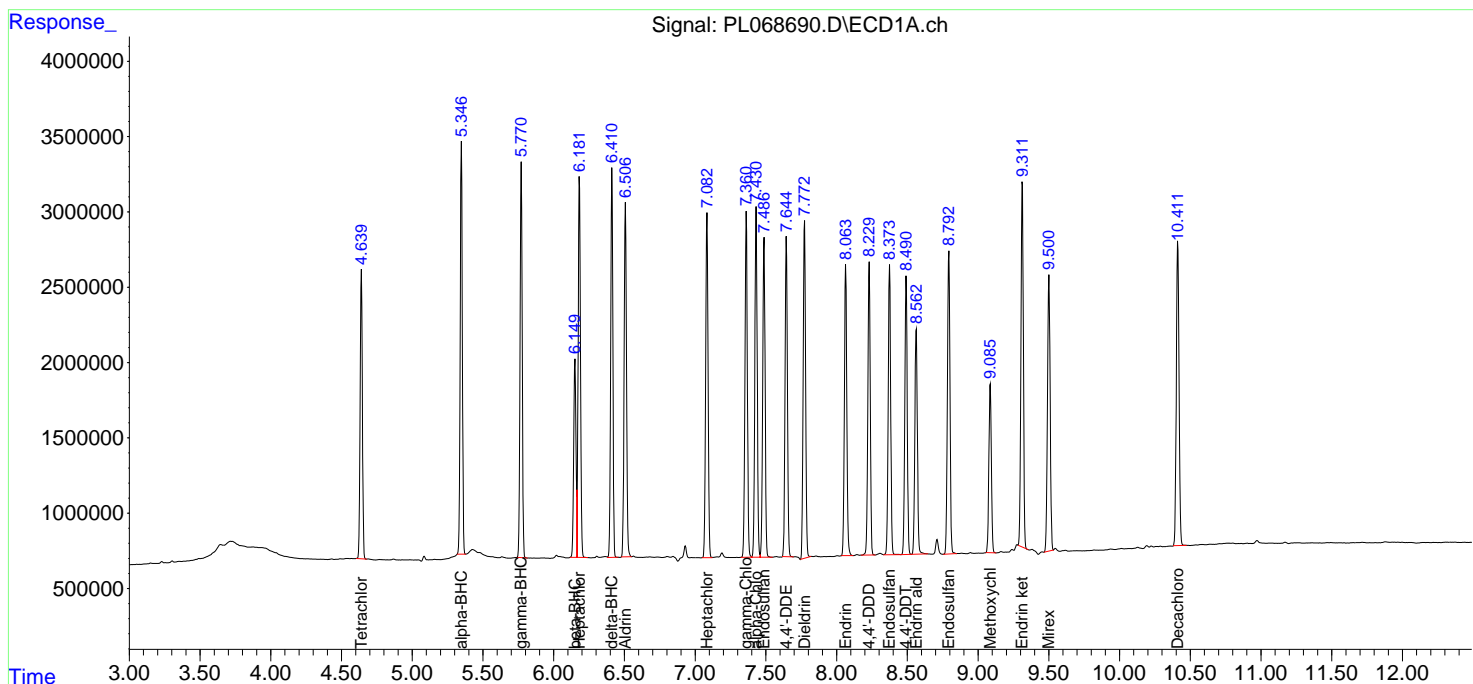
(f)=RT Delta > 1/2 Window (#)=Amounts differ by > 25% (m)=manual int.

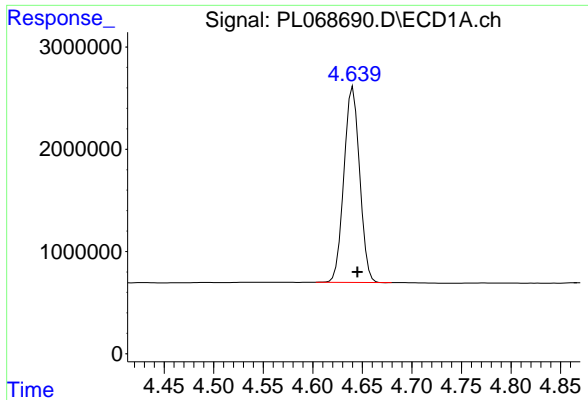
Data Path : Z:\pestpcbsrv\HPCHEM1\ECD_L\Data\PL080421\
 Data File : PL068690.D
 Signal(s) : Signal #1: ECD1A.ch Signal #2: ECD2B.ch
 Acq On : 04 Aug 2021 19:23
 Operator : AR\AJ
 Sample : PSTDCCC050
 Misc :
 ALS Vial : 4 Sample Multiplier: 1

Instrument :
 ECD_L
 ClientSampleId :
 PSTDCCC050

Integration File signal 1: autoint1.e
 Integration File signal 2: autoint2.e
 Quant Time: Aug 05 01:47:57 2021
 Quant Method : Z:\pestpcbsrv\HPCHEM1\ECD_L\methods\PL071921.M
 Quant Title : GC Extractables
 QLast Update : Tue Jul 20 11:44:21 2021
 Response via : Initial Calibration
 Integrator: ChemStation

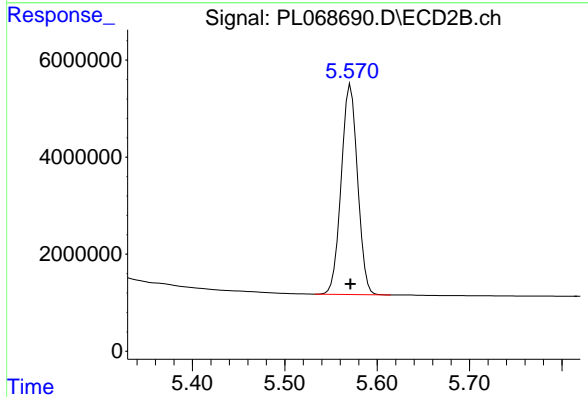
Volume Inj. : 1 µl
 Signal #1 Phase : ZB-MR2 Signal #2 Phase: ZB-MR1
 Signal #1 Info : 30M x 0.32mm x0.2 Signal #2 Info : 30M x 0.32mm x0.5µm



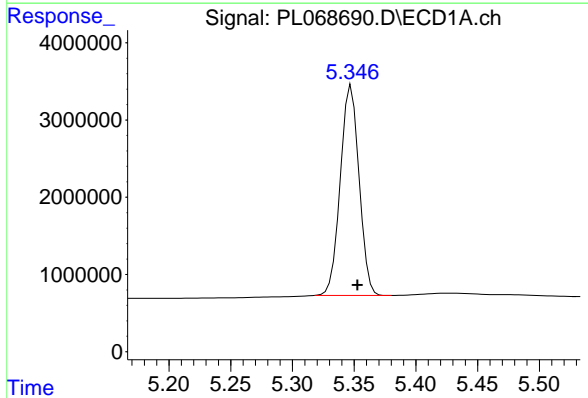


#1 Tetrachloro-m-xylene
 R.T.: 4.641 min
 Delta R.T.: -0.004 min
 Response: 21093233
 Conc: 49.15 ng/ml

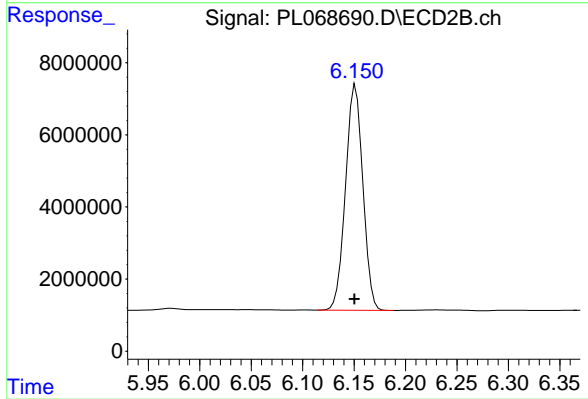
Instrument :
 ECD_L
 ClientSampleId :
 PSTDCCC050



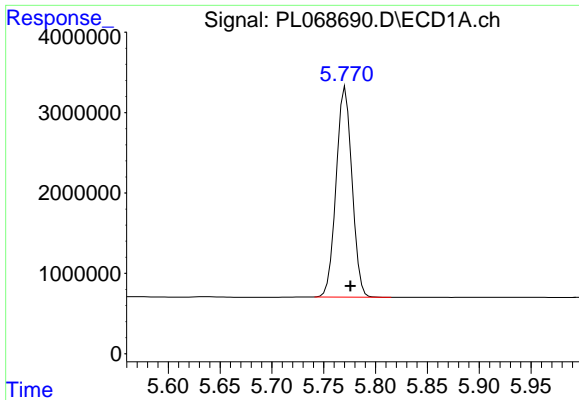
#1 Tetrachloro-m-xylene
 R.T.: 5.571 min
 Delta R.T.: 0.000 min
 Response: 53253524
 Conc: 52.19 ng/ml



#2 alpha-BHC
 R.T.: 5.348 min
 Delta R.T.: -0.005 min
 Response: 28807259
 Conc: 49.21 ng/ml

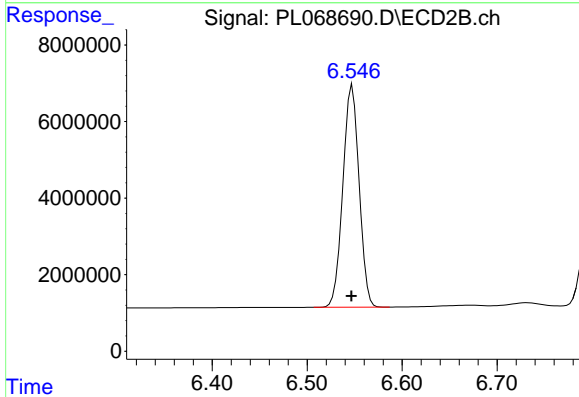


#2 alpha-BHC
 R.T.: 6.151 min
 Delta R.T.: 0.001 min
 Response: 73387825
 Conc: 53.98 ng/ml

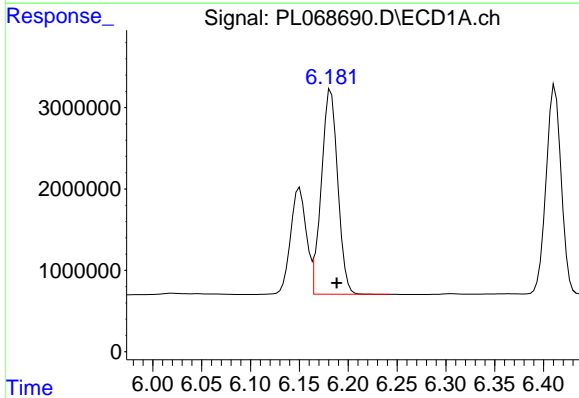


#3 gamma-BHC (Lindane)
 R.T.: 5.771 min
 Delta R.T.: -0.005 min
 Response: 27817841
 Conc: 48.94 ng/ml

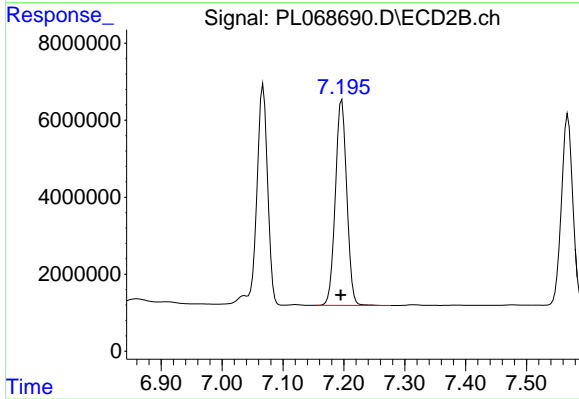
Instrument :
 ECD_L
 ClientSampleId :
 PSTDCCC050



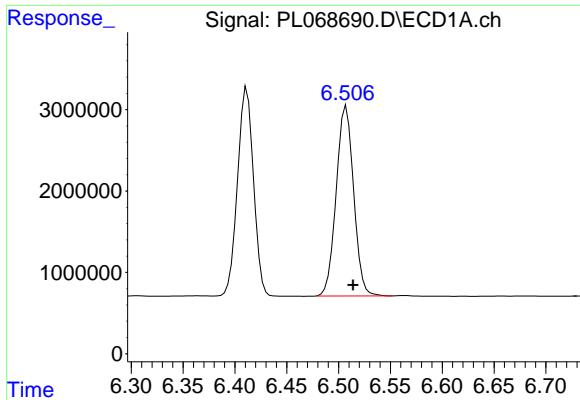
#3 gamma-BHC (Lindane)
 R.T.: 6.548 min
 Delta R.T.: 0.001 min
 Response: 68987621
 Conc: 53.47 ng/ml



#4 Heptachlor
 R.T.: 6.182 min
 Delta R.T.: -0.006 min
 Response: 29381827
 Conc: 48.20 ng/ml

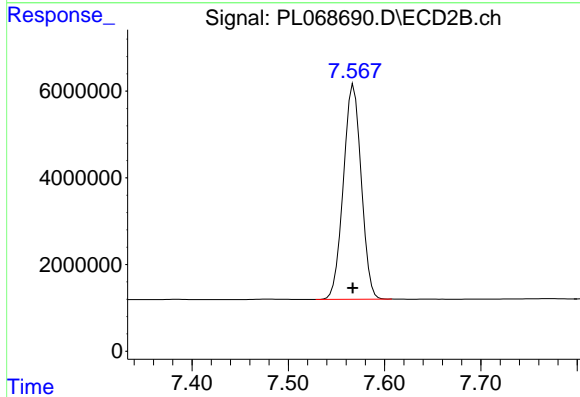


#4 Heptachlor
 R.T.: 7.197 min
 Delta R.T.: 0.002 min
 Response: 69509940
 Conc: 53.33 ng/ml

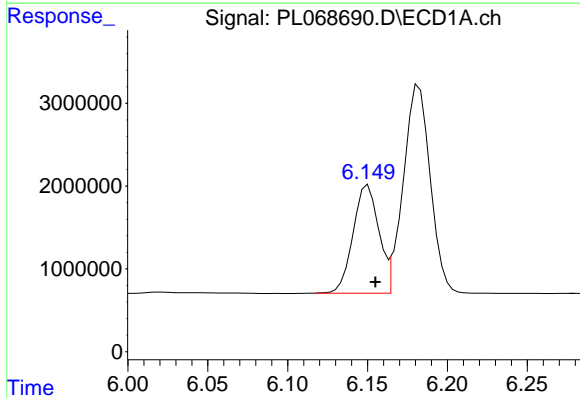


#5 Aldrin
 R.T.: 6.507 min
 Delta R.T.: -0.006 min
 Response: 27355513
 Conc: 48.68 ng/ml

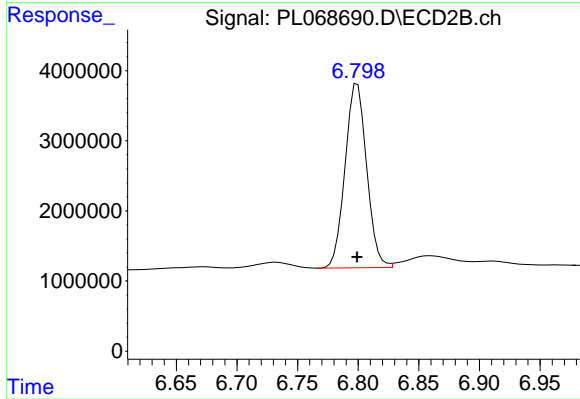
Instrument :
 ECD_L
 ClientSampleId :
 PSTDCCC050



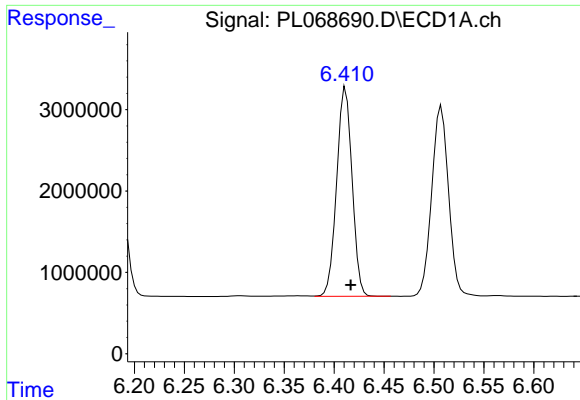
#5 Aldrin
 R.T.: 7.568 min
 Delta R.T.: 0.000 min
 Response: 63693099
 Conc: 53.68 ng/ml



#6 beta-BHC
 R.T.: 6.150 min
 Delta R.T.: -0.005 min
 Response: 14631063
 Conc: 50.00 ng/ml

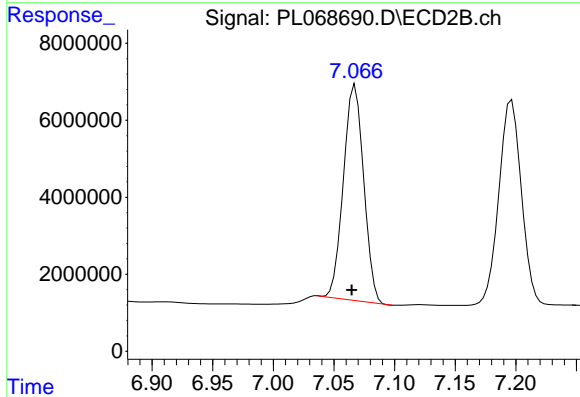


#6 beta-BHC
 R.T.: 6.799 min
 Delta R.T.: 0.000 min
 Response: 32497166
 Conc: 46.00 ng/ml

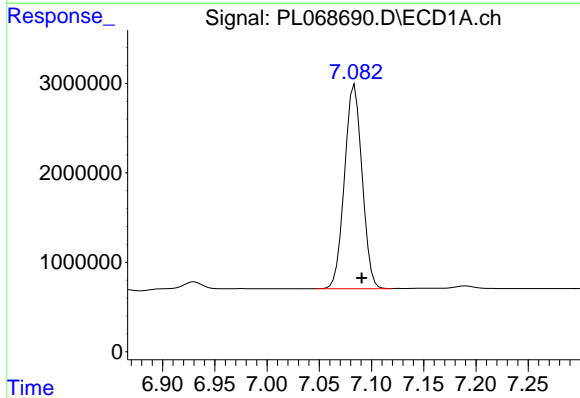


#7 delta-BHC
 R.T.: 6.412 min
 Delta R.T.: -0.005 min
 Response: 27593042
 Conc: 49.39 ng/ml

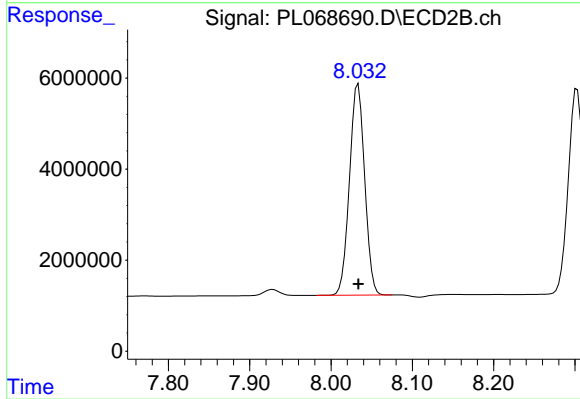
Instrument :
 ECD_L
 ClientSampleId :
 PSTDCCC050



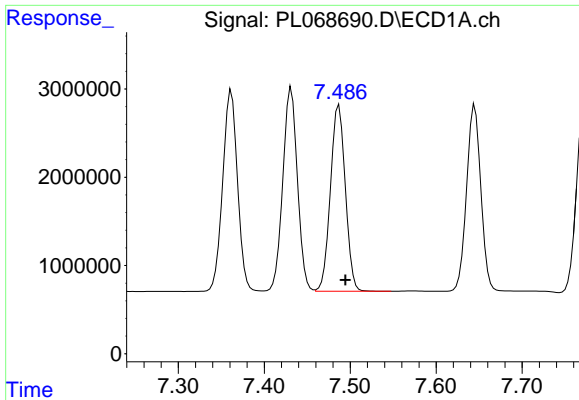
#7 delta-BHC
 R.T.: 7.068 min
 Delta R.T.: 0.003 min
 Response: 64840666
 Conc: 52.92 ng/ml



#8 Heptachlor epoxide
 R.T.: 7.084 min
 Delta R.T.: -0.007 min
 Response: 26748358
 Conc: 48.15 ng/ml

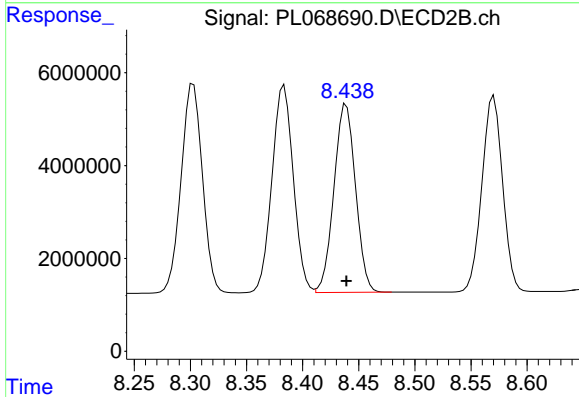


#8 Heptachlor epoxide
 R.T.: 8.033 min
 Delta R.T.: 0.000 min
 Response: 60001659
 Conc: 53.07 ng/ml

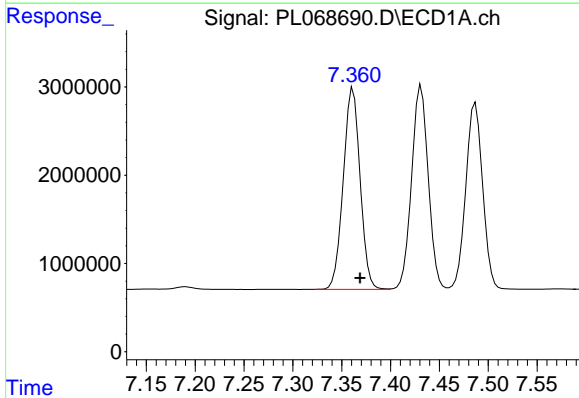


#9 Endosulfan I
 R.T.: 7.487 min
 Delta R.T.: -0.007 min
 Response: 25367065
 Conc: 48.02 ng/ml

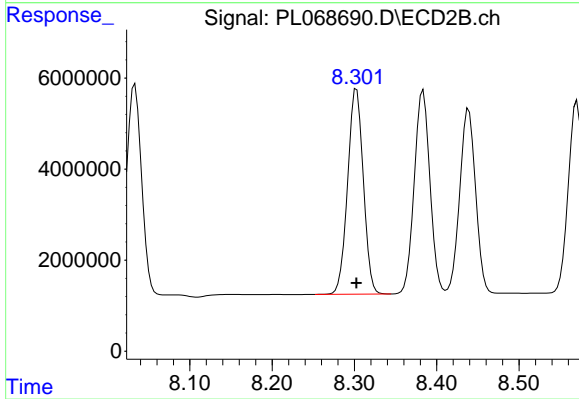
Instrument :
 ECD_L
 ClientSampleId :
 PSTDCCC050



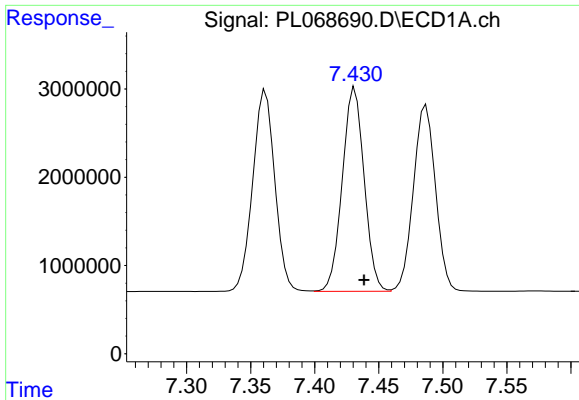
#9 Endosulfan I
 R.T.: 8.439 min
 Delta R.T.: 0.000 min
 Response: 54303982
 Conc: 52.74 ng/ml



#10 gamma-Chlordane
 R.T.: 7.362 min
 Delta R.T.: -0.007 min
 Response: 27366923
 Conc: 47.70 ng/ml



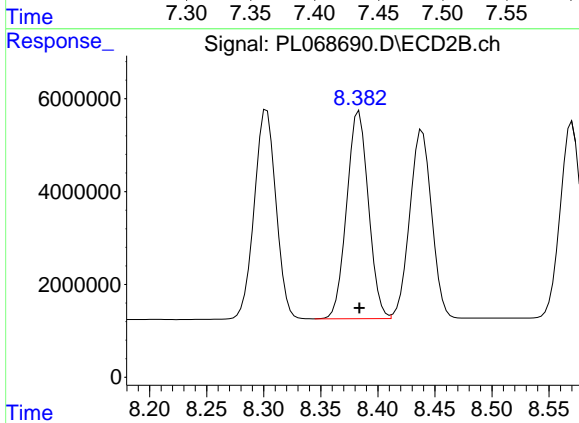
#10 gamma-Chlordane
 R.T.: 8.303 min
 Delta R.T.: 0.000 min
 Response: 59753967
 Conc: 53.06 ng/ml



#11 alpha-Chlordane

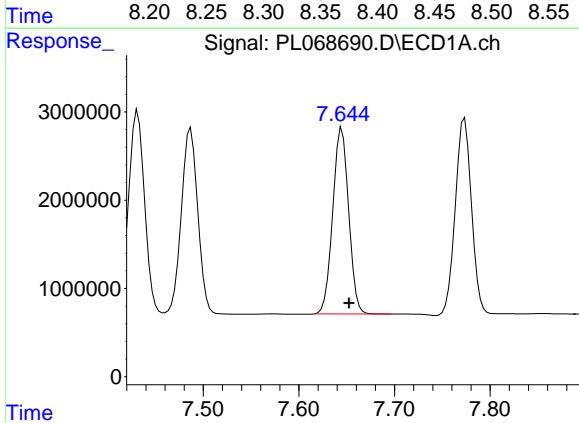
R.T.: 7.431 min
Delta R.T.: -0.007 min
Response: 27381603
Conc: 47.67 ng/ml

Instrument :
ECD_L
ClientSampleId :
PSTDCCC050



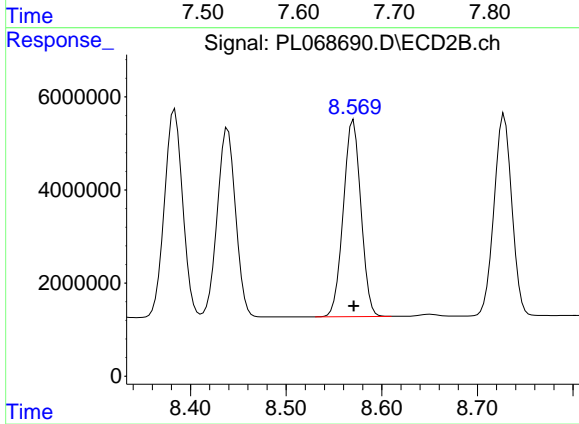
#11 alpha-Chlordane

R.T.: 8.384 min
Delta R.T.: 0.000 min
Response: 59203964
Conc: 52.64 ng/ml



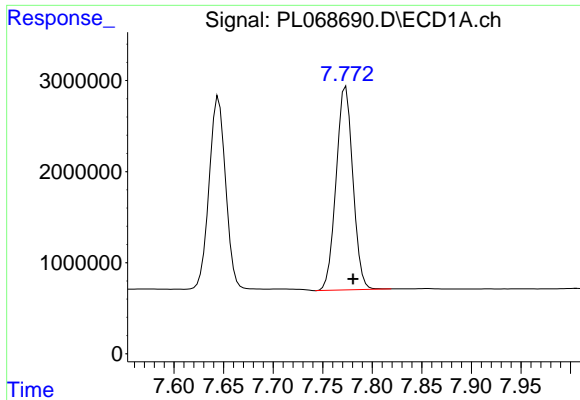
#12 4,4'-DDE

R.T.: 7.645 min
Delta R.T.: -0.007 min
Response: 24337940
Conc: 48.30 ng/ml



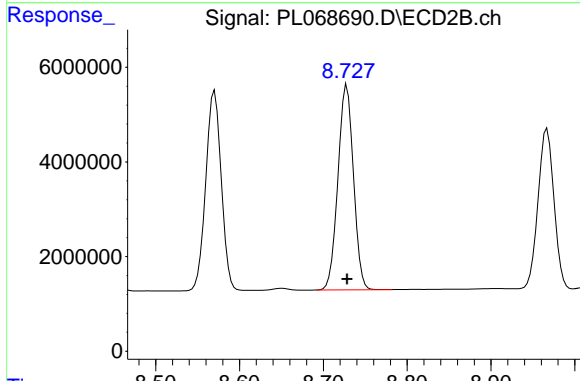
#12 4,4'-DDE

R.T.: 8.570 min
Delta R.T.: 0.000 min
Response: 54263629
Conc: 52.65 ng/ml

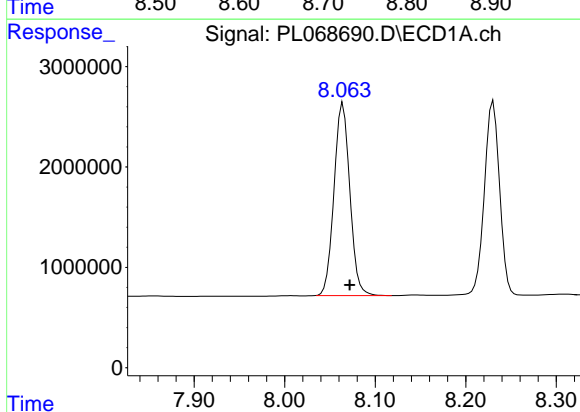


#13 Dieldrin
 R.T.: 7.773 min
 Delta R.T.: -0.007 min
 Response: 26288749
 Conc: 48.84 ng/ml

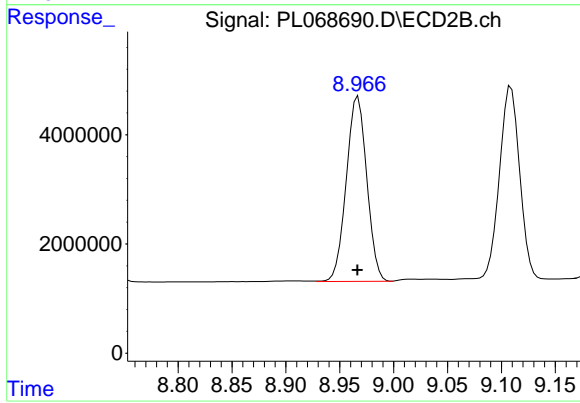
Instrument :
 ECD_L
 ClientSampleId :
 PSTDCCC050



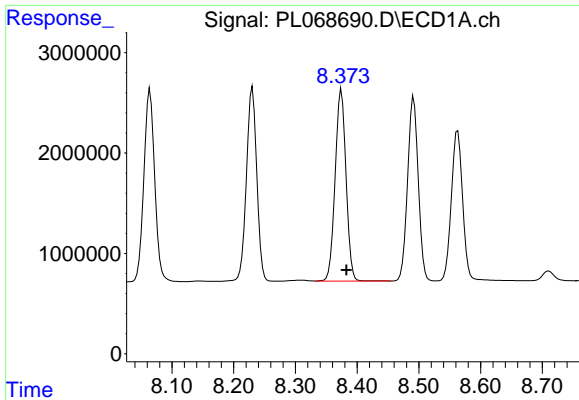
#13 Dieldrin
 R.T.: 8.728 min
 Delta R.T.: 0.000 min
 Response: 55840200
 Conc: 52.65 ng/ml



#14 Endrin
 R.T.: 8.065 min
 Delta R.T.: -0.008 min
 Response: 23319860
 Conc: 46.63 ng/ml

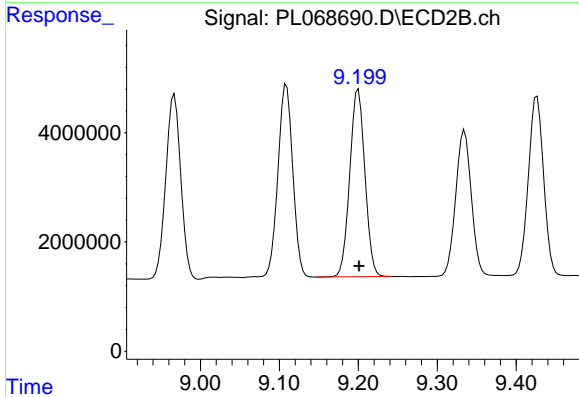


#14 Endrin
 R.T.: 8.967 min
 Delta R.T.: 0.000 min
 Response: 44851498
 Conc: 50.16 ng/ml

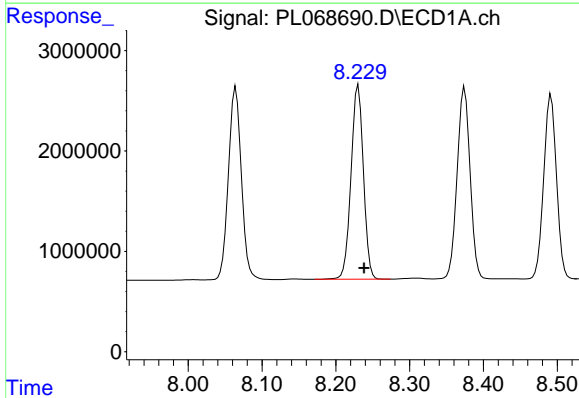


#15 Endosulfan II
 R.T.: 8.375 min
 Delta R.T.: -0.008 min
 Response: 23424686
 Conc: 47.45 ng/ml

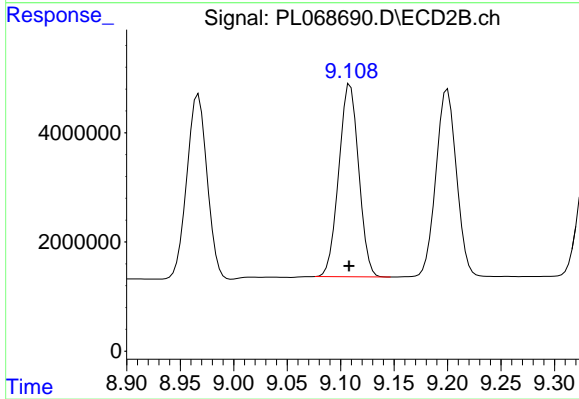
Instrument :
 ECD_L
 ClientSampleId :
 PSTDCCC050



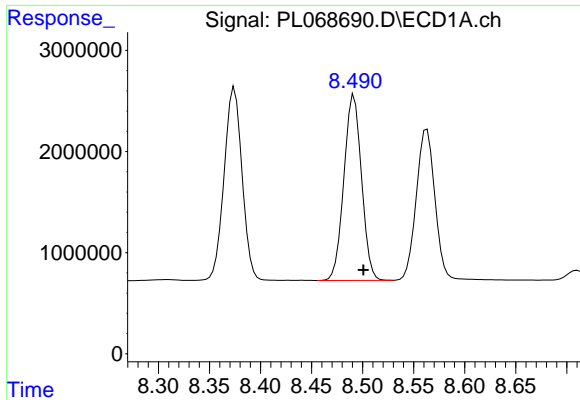
#15 Endosulfan II
 R.T.: 9.200 min
 Delta R.T.: 0.000 min
 Response: 45921612
 Conc: 50.66 ng/ml



#16 4,4'-DDD
 R.T.: 8.230 min
 Delta R.T.: -0.008 min
 Response: 22590185
 Conc: 50.57 ng/ml

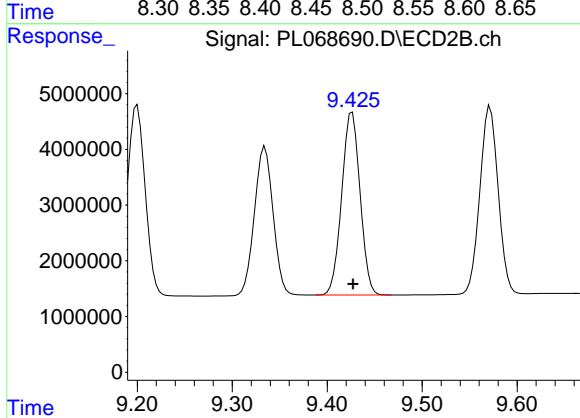


#16 4,4'-DDD
 R.T.: 9.109 min
 Delta R.T.: 0.001 min
 Response: 45819761
 Conc: 53.81 ng/ml

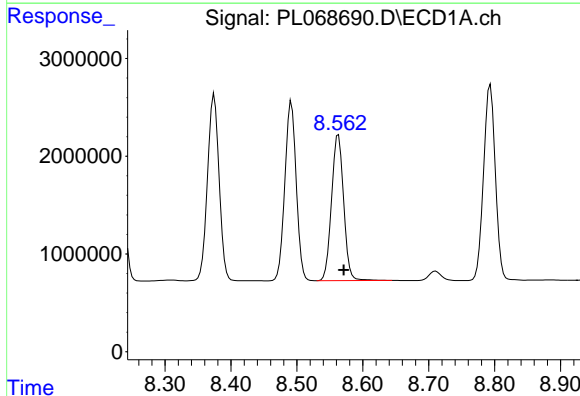


#17 4,4'-DDT
R.T.: 8.492 min
Delta R.T.: -0.009 min
Response: 22044983
Conc: 43.95 ng/ml

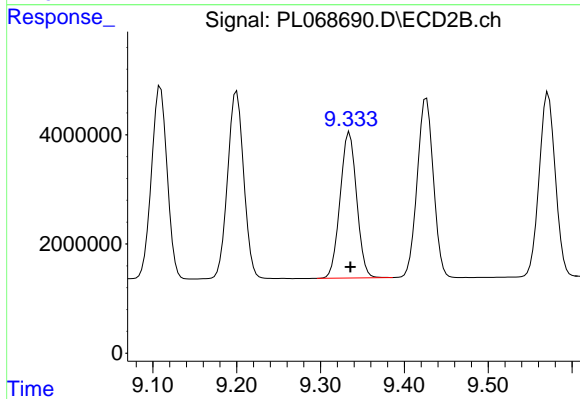
Instrument :
ECD_L
ClientSampleId :
PSTDCCC050



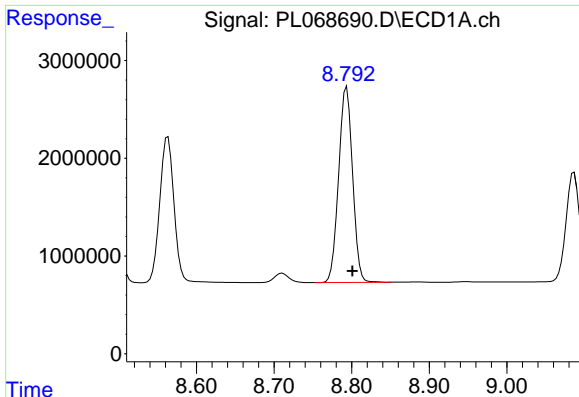
#17 4,4'-DDT
R.T.: 9.426 min
Delta R.T.: 0.000 min
Response: 44156051
Conc: 46.78 ng/ml



#18 Endrin aldehyde
R.T.: 8.563 min
Delta R.T.: -0.008 min
Response: 19028161
Conc: 48.03 ng/ml



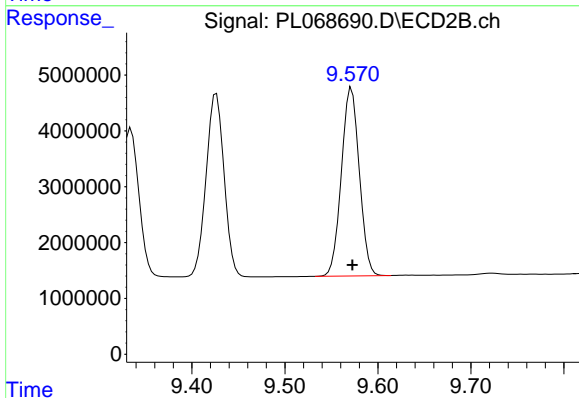
#18 Endrin aldehyde
R.T.: 9.335 min
Delta R.T.: 0.000 min
Response: 36626614
Conc: 50.82 ng/ml



#19 Endosulfan Sulfate

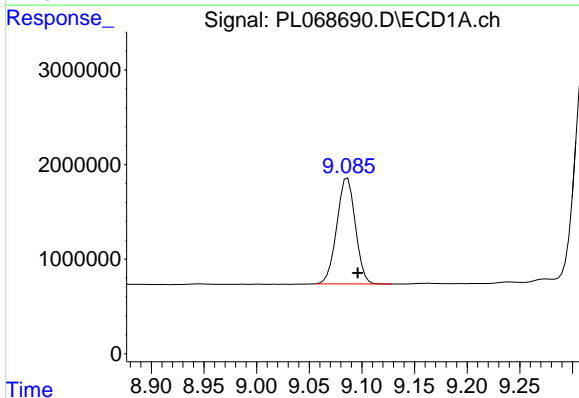
R.T.: 8.794 min
 Delta R.T.: -0.007 min
 Response: 24980850
 Conc: 47.54 ng/ml

Instrument :
 ECD_L
 ClientSampleId :
 PSTDCCC050



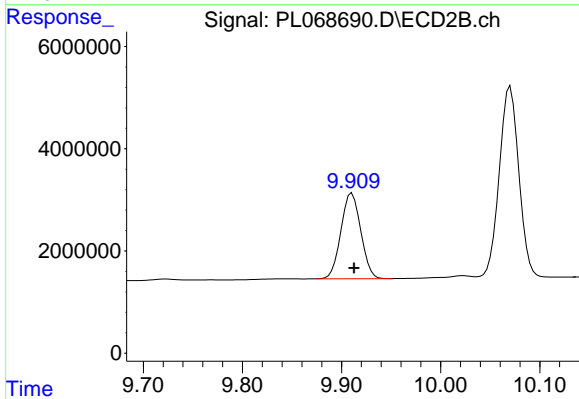
#19 Endosulfan Sulfate

R.T.: 9.572 min
 Delta R.T.: 0.000 min
 Response: 45220257
 Conc: 50.22 ng/ml



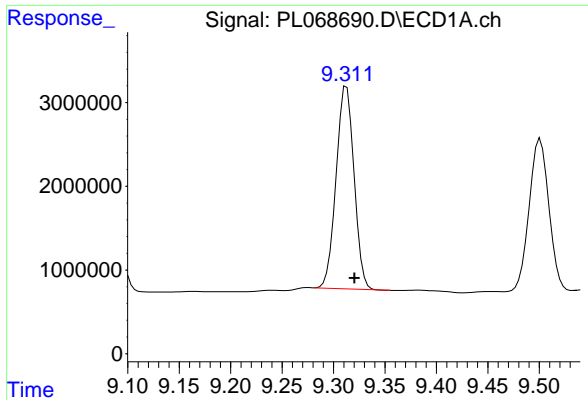
#20 Methoxychlor

R.T.: 9.086 min
 Delta R.T.: -0.010 min
 Response: 13779976
 Conc: 44.05 ng/ml



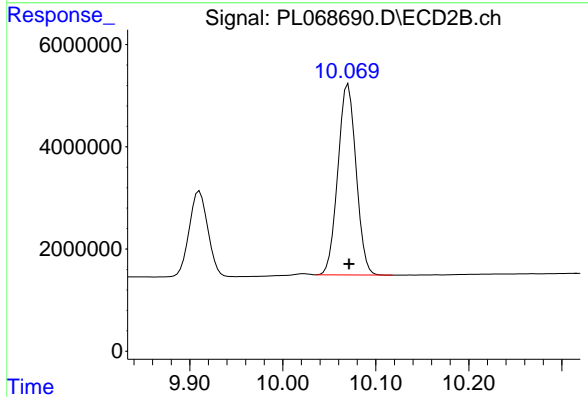
#20 Methoxychlor

R.T.: 9.910 min
 Delta R.T.: -0.002 min
 Response: 23344826
 Conc: 45.95 ng/ml

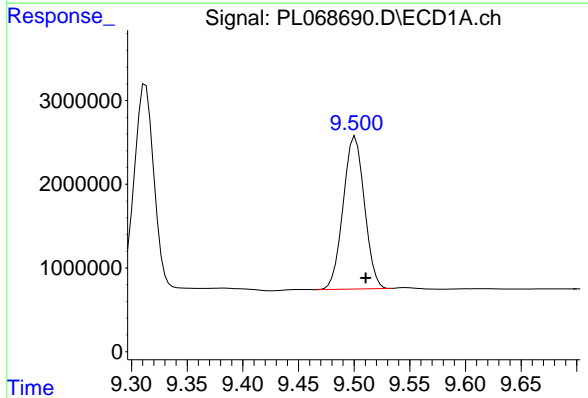


#21 Endrin ketone
 R.T.: 9.313 min
 Delta R.T.: -0.008 min
 Response: 29334557
 Conc: 49.54 ng/ml

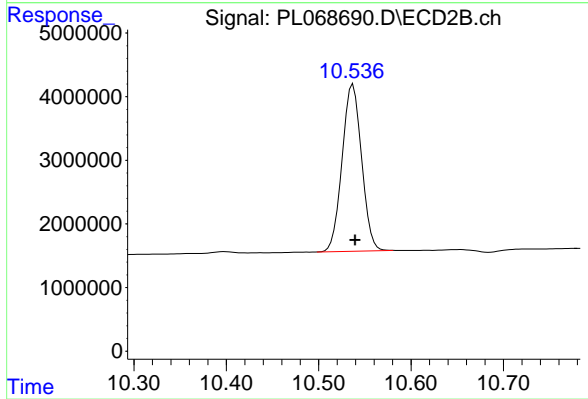
Instrument :
 ECD_L
 ClientSampleId :
 PSTDCCC050



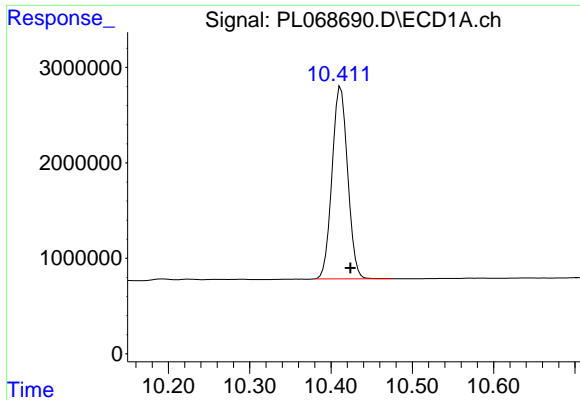
#21 Endrin ketone
 R.T.: 10.070 min
 Delta R.T.: 0.000 min
 Response: 50832472
 Conc: 50.97 ng/ml



#22 Mirex
 R.T.: 9.501 min
 Delta R.T.: -0.009 min
 Response: 24256263
 Conc: 49.12 ng/ml



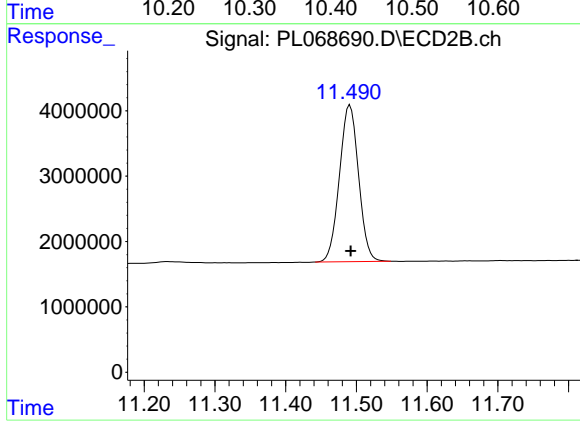
#22 Mirex
 R.T.: 10.537 min
 Delta R.T.: -0.002 min
 Response: 38439243
 Conc: 49.69 ng/ml



#28 Decachlorobiphenyl

R.T.: 10.412 min
Delta R.T.: -0.012 min
Response: 26943031
Conc: 47.91 ng/ml

Instrument :
ECD_L
ClientSampled :
PSTDCCC050



#28 Decachlorobiphenyl

R.T.: 11.491 min
Delta R.T.: -0.001 min
Response: 45015129
Conc: 50.47 ng/ml