

Data Path : Z:\pestpcbsrv\HPCHEM1\ECD_L\Data\PL080421\
 Data File : PL068695.D
 Signal(s) : Signal #1: ECD1A.ch Signal #2: ECD2B.ch
 Acq On : 04 Aug 2021 22:23
 Operator : AR\AJ
 Sample : I.BLK
 Misc :
 ALS Vial : 2 Sample Multiplier: 1

Instrument :
 ECD_L
 ClientSampleId :
 I.BLK

Integration File signal 1: autoint1.e
 Integration File signal 2: autoint2.e
 Quant Time: Aug 05 04:02:39 2021
 Quant Method : Z:\pestpcbsrv\HPCHEM1\ECD_L\methods\PL071921.M
 Quant Title : GC Extractables
 QLast Update : Tue Jul 20 11:44:21 2021
 Response via : Initial Calibration
 Integrator: ChemStation

Volume Inj. : 1 µl
 Signal #1 Phase : ZB-MR2 Signal #2 Phase: ZB-MR1
 Signal #1 Info : 30M x 0.32mm x0.2 Signal #2 Info : 30M x 0.32mm x0.5µm

Compound	RT#1	RT#2	Resp#1	Resp#2	ng/ml	ng/ml

System Monitoring Compounds						
1) SA Tetrachlo...	4.637	5.569	9630482	24838451	22.439	24.341
28) SA Decachlor...	10.408	11.488	12370400	21043140	21.995	23.591

Target Compounds

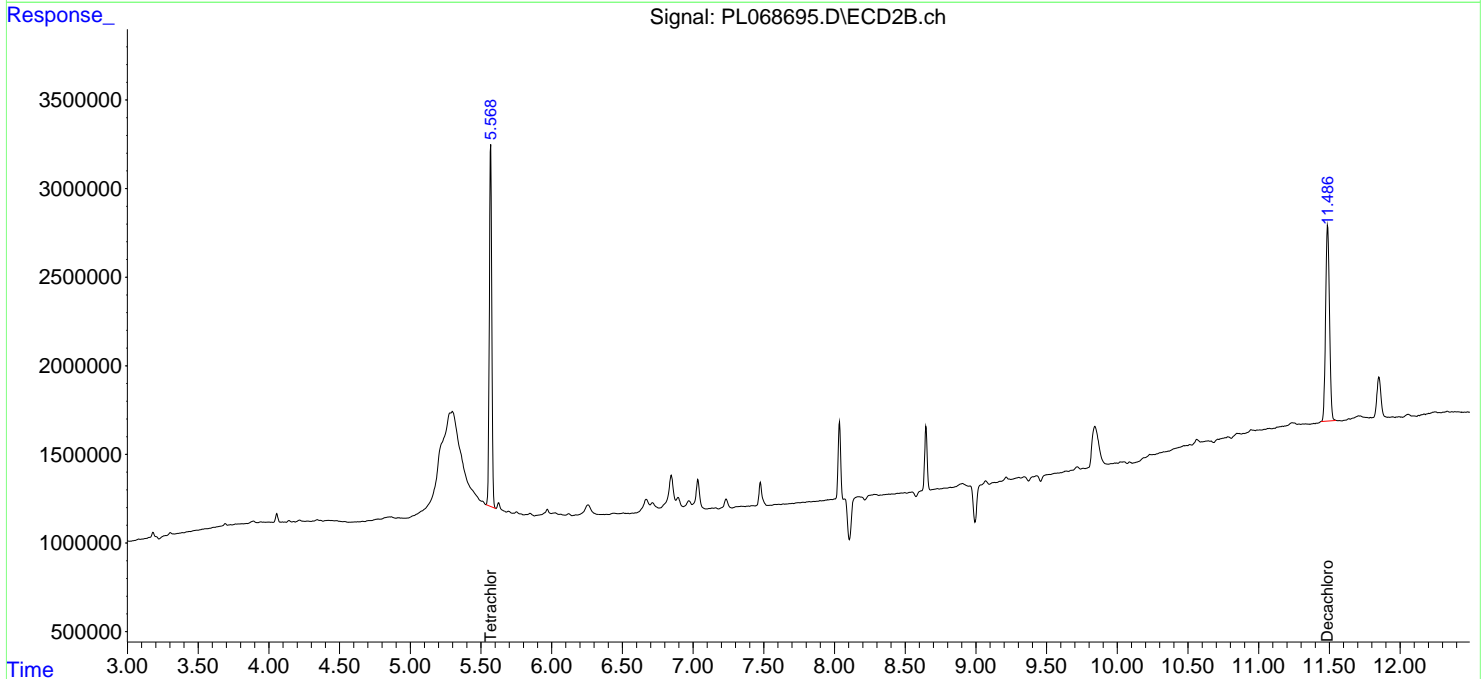
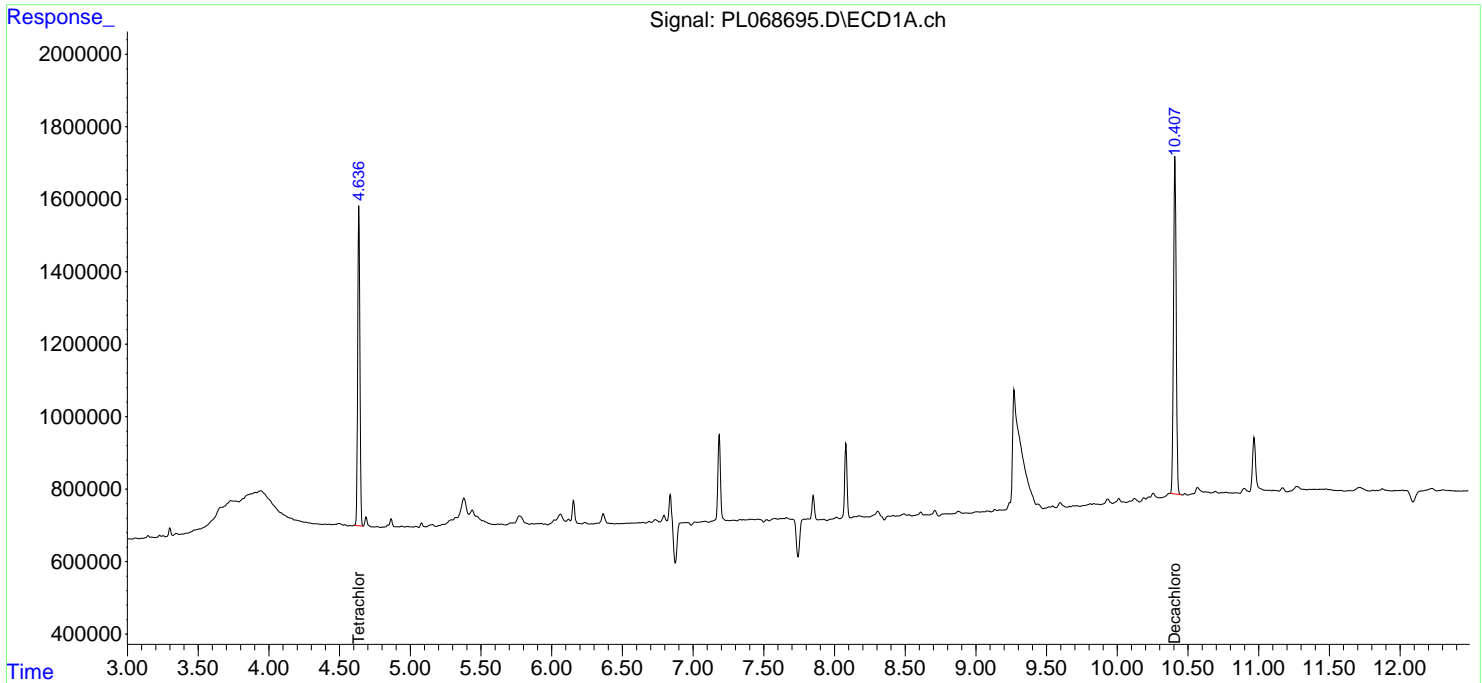
(f)=RT Delta > 1/2 Window (#)=Amounts differ by > 25% (m)=manual int.

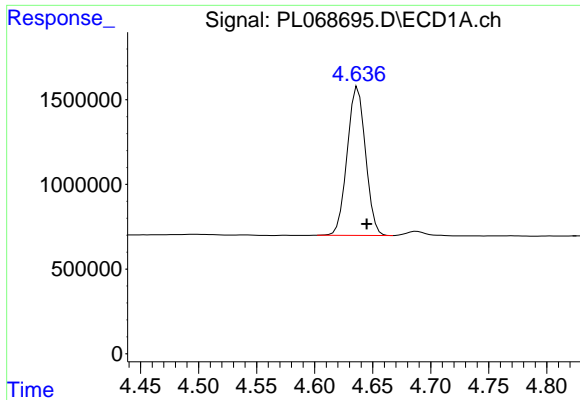
Data Path : Z:\pestpcbsrv\HPCHEM1\ECD_L\Data\PL080421\
 Data File : PL068695.D
 Signal(s) : Signal #1: ECD1A.ch Signal #2: ECD2B.ch
 Acq On : 04 Aug 2021 22:23
 Operator : AR\AJ
 Sample : I.BLK
 Misc :
 ALS Vial : 2 Sample Multiplier: 1

Instrument :
 ECD_L
ClientSampled :
 I.BLK

Integration File signal 1: autoint1.e
 Integration File signal 2: autoint2.e
 Quant Time: Aug 05 04:02:39 2021
 Quant Method : Z:\pestpcbsrv\HPCHEM1\ECD_L\methods\PL071921.M
 Quant Title : GC Extractables
 QLast Update : Tue Jul 20 11:44:21 2021
 Response via : Initial Calibration
 Integrator: ChemStation

Volume Inj. : 1 µl
 Signal #1 Phase : ZB-MR2 Signal #2 Phase: ZB-MR1
 Signal #1 Info : 30M x 0.32mm x0.2 Signal #2 Info : 30M x 0.32mm x0.5µm

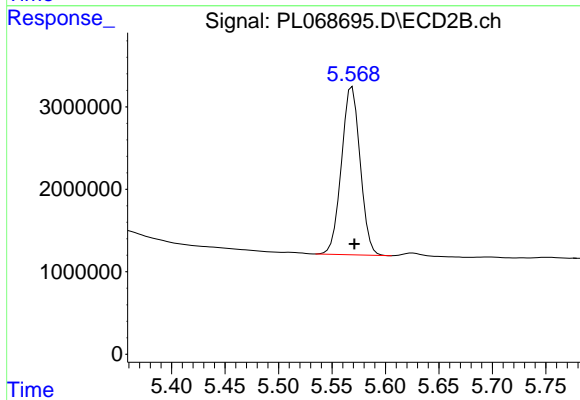




#1 Tetrachloro-m-xylene

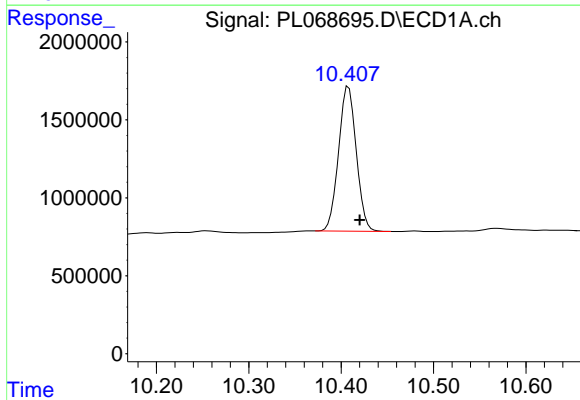
R.T.: 4.637 min
 Delta R.T.: -0.008 min
 Response: 9630482
 Conc: 22.44 ng/ml

Instrument :
 ECD_L
 ClientSampleId :
 I.BLK



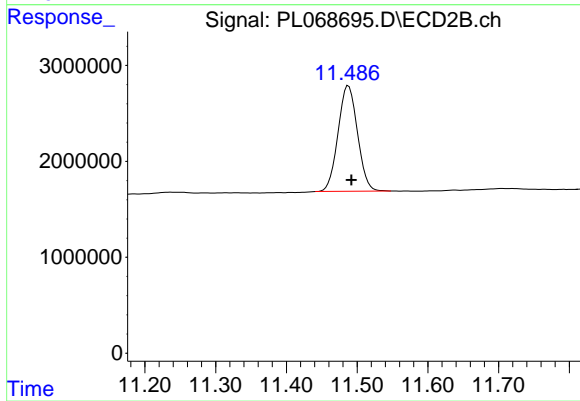
#1 Tetrachloro-m-xylene

R.T.: 5.569 min
 Delta R.T.: -0.002 min
 Response: 24838451
 Conc: 24.34 ng/ml



#28 Decachlorobiphenyl

R.T.: 10.408 min
 Delta R.T.: -0.012 min
 Response: 12370400
 Conc: 21.99 ng/ml



#28 Decachlorobiphenyl

R.T.: 11.488 min
 Delta R.T.: -0.004 min
 Response: 21043140
 Conc: 23.59 ng/ml