

Data Path : Z:\pestpcbsrv\HPCHEM1\ECD_L\Data\PL080521\
 Data File : PL068728.D
 Signal(s) : Signal #1: ECD1A.ch Signal #2: ECD2B.ch
 Acq On : 05 Aug 2021 18:15
 Operator : AR\AJ
 Sample : PB138216TB
 Misc :
 ALS Vial : 11 Sample Multiplier: 1

Instrument :
 ECD_L
 ClientSampleId :
 PB138216TB

Integration File signal 1: autoint1.e
 Integration File signal 2: autoint2.e
 Quant Time: Aug 06 03:10:44 2021
 Quant Method : Z:\pestpcbsrv\HPCHEM1\ECD_L\methods\PL080521.M
 Quant Title : GC Extractables
 QLast Update : Fri Aug 06 03:02:43 2021
 Response via : Initial Calibration
 Integrator: ChemStation

Volume Inj. : 1 µl
 Signal #1 Phase : ZB-MR2 Signal #2 Phase: ZB-MR1
 Signal #1 Info : 30M x 0.32mm x0.2 Signal #2 Info : 30M x 0.32mm x0.5µm

	Compound	RT#1	RT#2	Resp#1	Resp#2	ng/ml	ng/ml

System Monitoring Compounds							
1)	SA Tetrachlo...	4.639	5.569	6979062	17993493	16.872	17.722
28)	SA Decachlor...	10.410	11.490	10372709	17681137	18.049	18.223
Target Compounds							
9)	A Endosulfan I	0.000	8.456f	0	106908	N.D.	0.101 #
11)	B alpha-Chl...	0.000	8.399	0	145199	N.D.	0.126 #
13)	MA Dieldrin	0.000	8.725	0	289125	N.D.	0.267 #
15)	B Endosulfa...	0.000	9.214	0	496534	N.D.	0.541 #
21)	B Endrin ke...	0.000	10.089f	0	630365	N.D.	0.619 #
22)	Mirex	0.000	10.553	0	101607	N.D.	0.128 #
23)	Chlordane-1	0.000	6.979f	0	144809	N.D.	3.434 #
26)	Chlordane-4	0.000	8.399	0	145199	N.D.	0.732 #

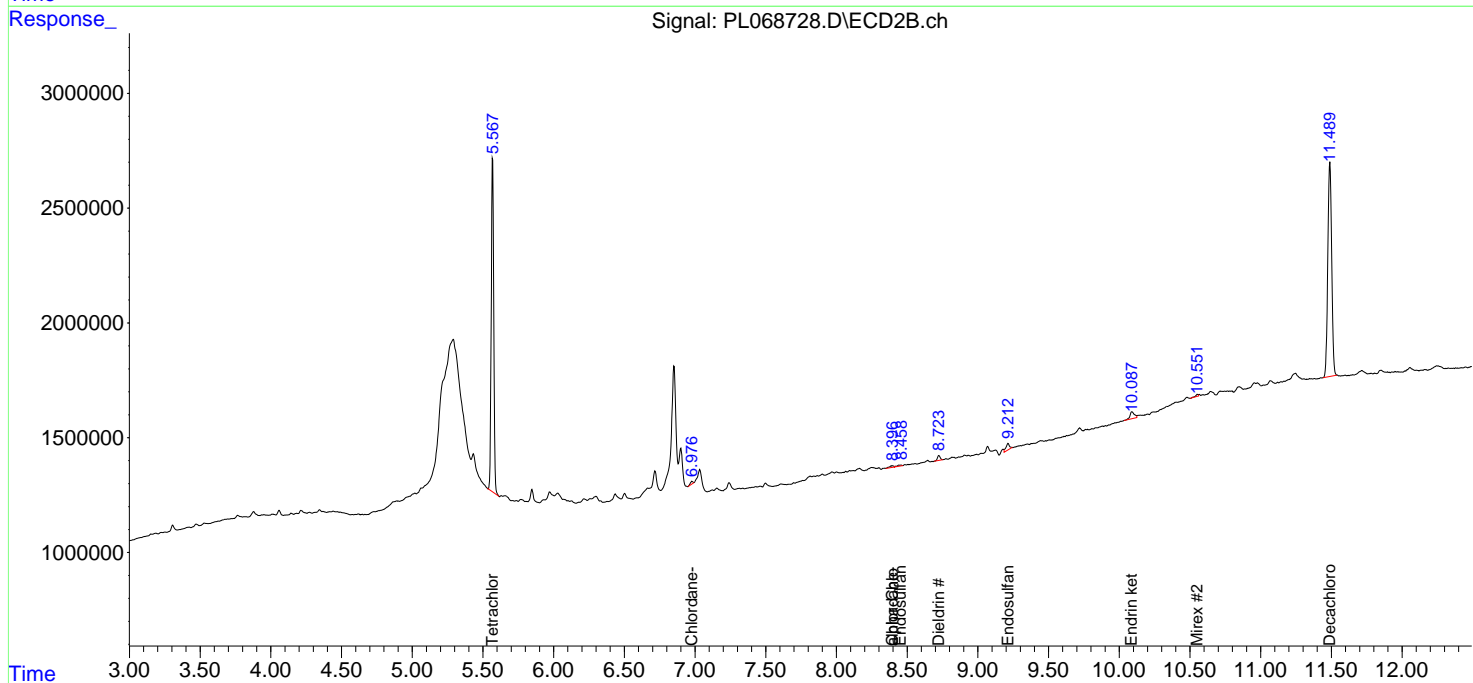
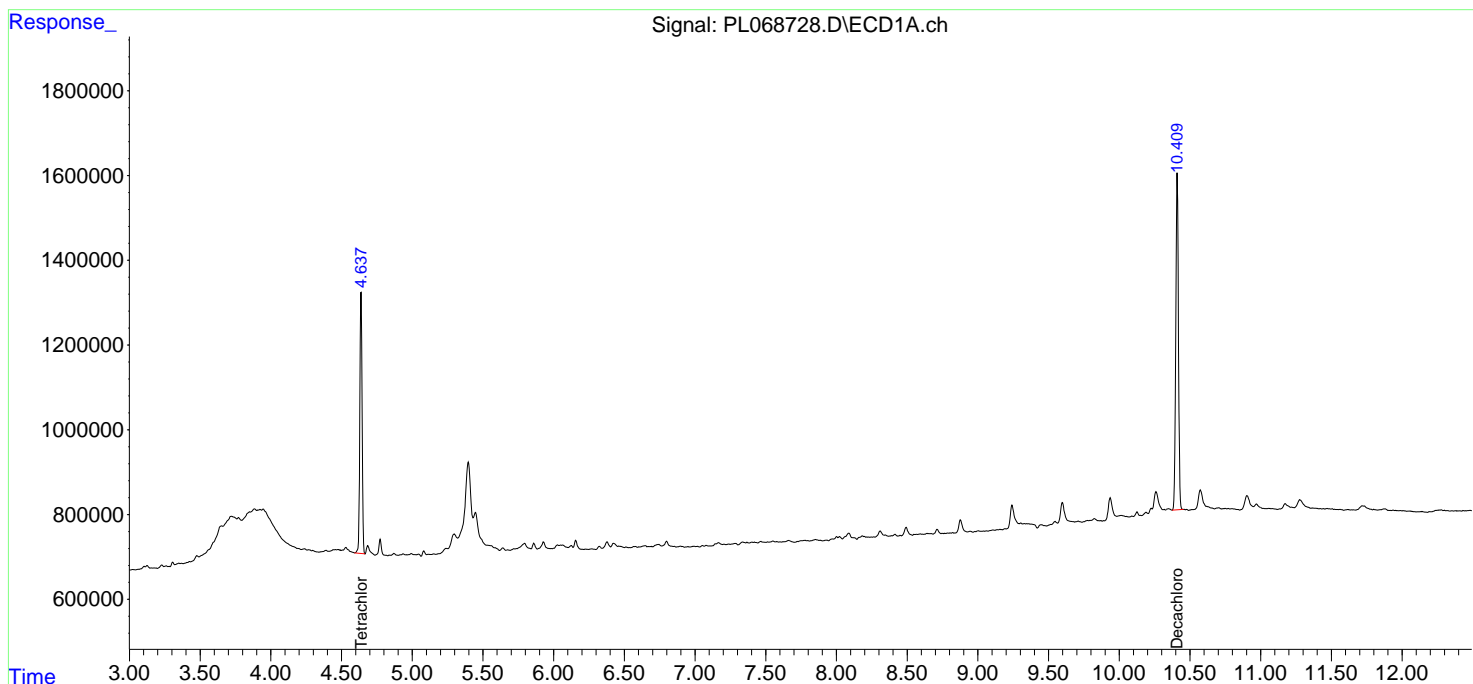
(f)=RT Delta > 1/2 Window (#)=Amounts differ by > 25% (m)=manual int.

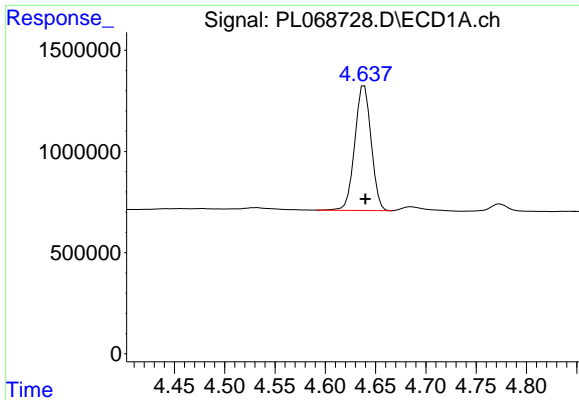
Data Path : Z:\pestpcbsrv\HPCHEM1\ECD_L\Data\PL080521\
 Data File : PL068728.D
 Signal(s) : Signal #1: ECD1A.ch Signal #2: ECD2B.ch
 Acq On : 05 Aug 2021 18:15
 Operator : AR\AJ
 Sample : PB138216TB
 Misc :
 ALS Vial : 11 Sample Multiplier: 1

Instrument :
 ECD_L
 ClientSampled :
 PB138216TB

Integration File signal 1: autoint1.e
 Integration File signal 2: autoint2.e
 Quant Time: Aug 06 03:10:44 2021
 Quant Method : Z:\pestpcbsrv\HPCHEM1\ECD_L\methods\PL080521.M
 Quant Title : GC Extractables
 QLast Update : Fri Aug 06 03:02:43 2021
 Response via : Initial Calibration
 Integrator: ChemStation

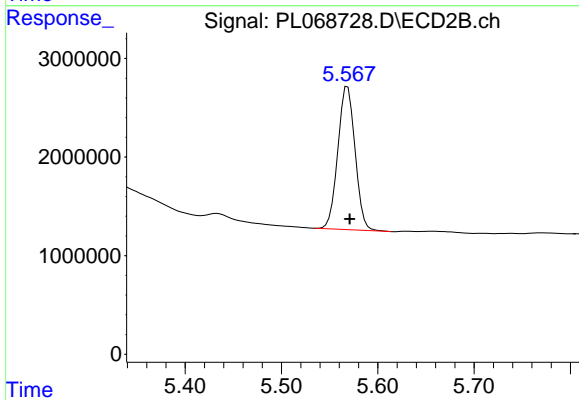
Volume Inj. : 1 µl
 Signal #1 Phase : ZB-MR2 Signal #2 Phase: ZB-MR1
 Signal #1 Info : 30M x 0.32mm x0.2 Signal #2 Info : 30M x 0.32mm x0.5µm



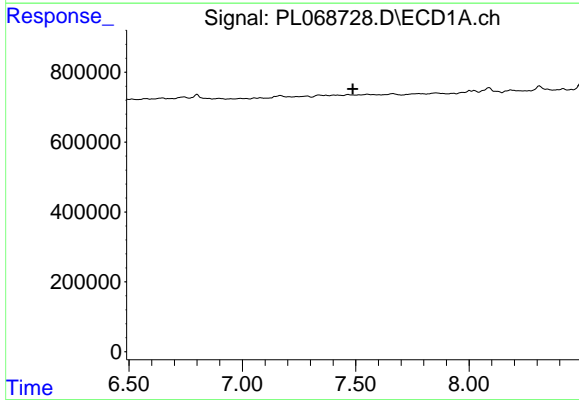


#1 Tetrachloro-m-xylene
 R.T.: 4.639 min
 Delta R.T.: -0.001 min
 Response: 6979062
 Conc: 16.87 ng/ml

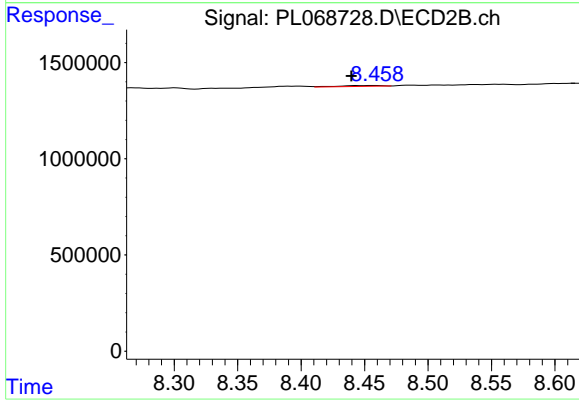
Instrument :
 ECD_L
 ClientSampleId :
 PB138216TB



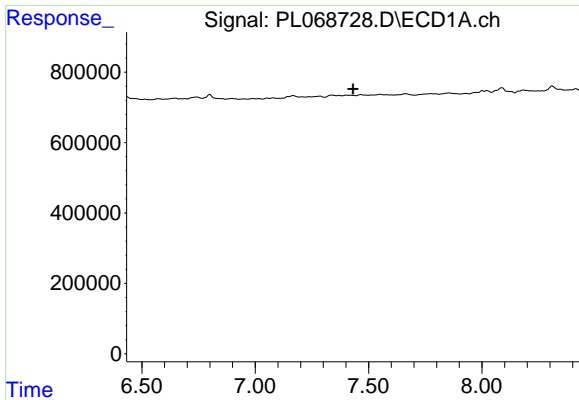
#1 Tetrachloro-m-xylene
 R.T.: 5.569 min
 Delta R.T.: -0.002 min
 Response: 17993493
 Conc: 17.72 ng/ml



#9 Endosulfan I
 R.T.: 0.000 min
 Exp R.T. : 7.487 min
 Response: 0
 Conc: N.D.



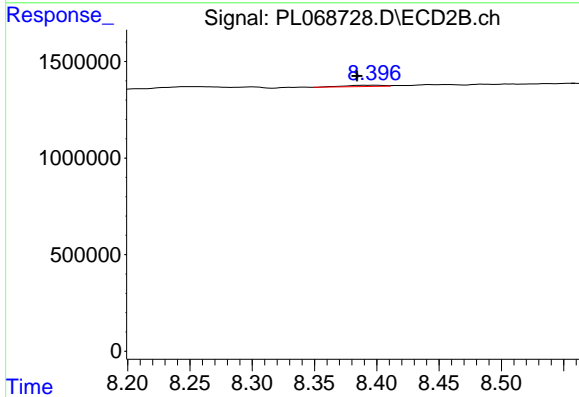
#9 Endosulfan I
 R.T.: 8.456 min
 Delta R.T.: 0.016 min
 Response: 106908
 Conc: 0.10 ng/ml



#11 alpha-Chlordane

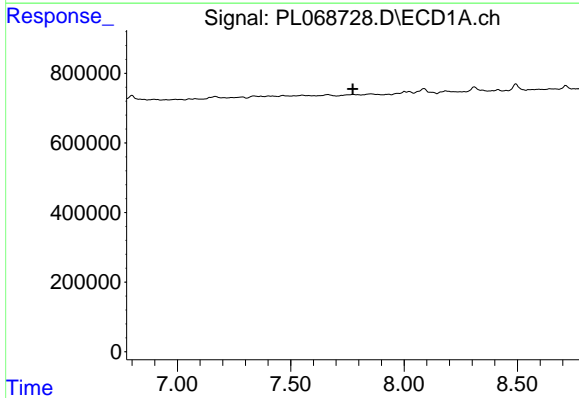
R.T.: 0.000 min
 Exp R.T. : 7.432 min
 Response: 0
 Conc: N.D.

Instrument :
 ECD_L
 ClientSampleId :
 PB138216TB



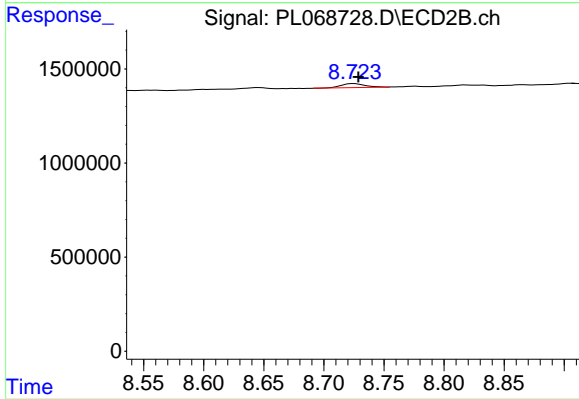
#11 alpha-Chlordane

R.T.: 8.399 min
 Delta R.T.: 0.014 min
 Response: 145199
 Conc: 0.13 ng/ml



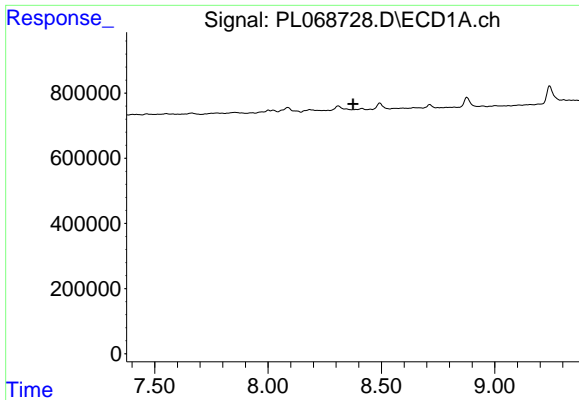
#13 Dieldrin

R.T.: 0.000 min
 Exp R.T. : 7.774 min
 Response: 0
 Conc: N.D.



#13 Dieldrin

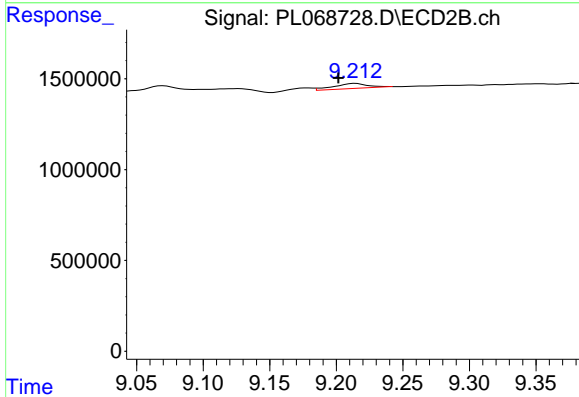
R.T.: 8.725 min
 Delta R.T.: -0.004 min
 Response: 289125
 Conc: 0.27 ng/ml



#15 Endosulfan II

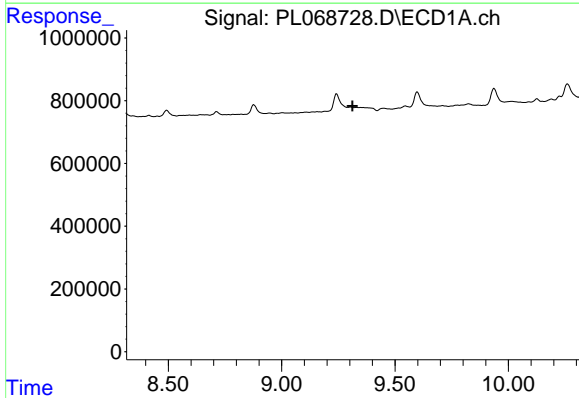
R.T.: 0.000 min
 Exp R.T. : 8.375 min
 Response: 0
 Conc: N.D.

Instrument :
 ECD_L
 ClientSampleId :
 PB138216TB



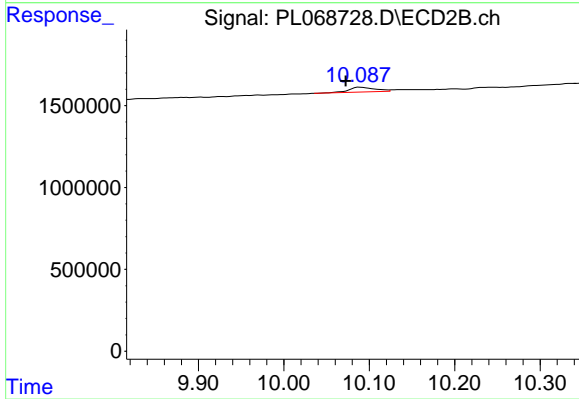
#15 Endosulfan II

R.T.: 9.214 min
 Delta R.T.: 0.013 min
 Response: 496534
 Conc: 0.54 ng/ml



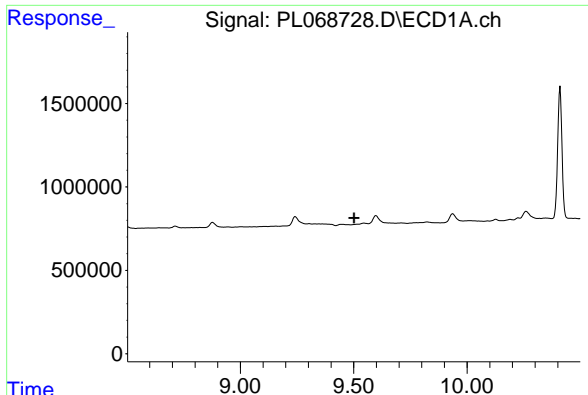
#21 Endrin ketone

R.T.: 0.000 min
 Exp R.T. : 9.313 min
 Response: 0
 Conc: N.D.



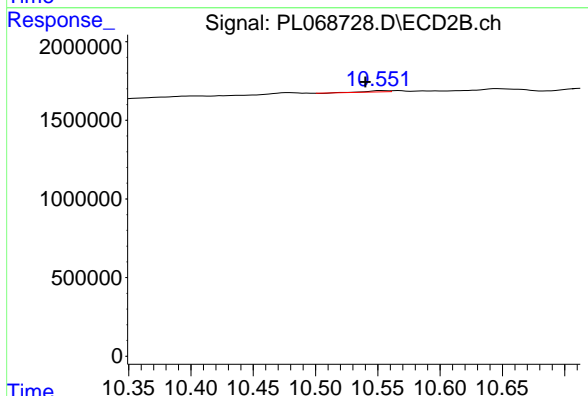
#21 Endrin ketone

R.T.: 10.089 min
 Delta R.T.: 0.017 min
 Response: 630365
 Conc: 0.62 ng/ml

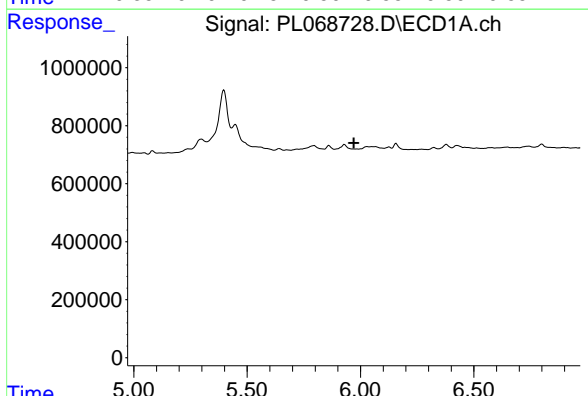


#22 Mirex
 R.T.: 0.000 min
 Exp R.T. : 9.502 min
 Response: 0
 Conc: N.D.

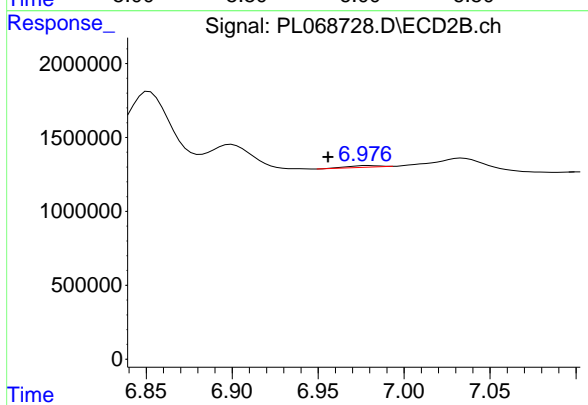
Instrument :
 ECD_L
 ClientSampleId :
 PB138216TB



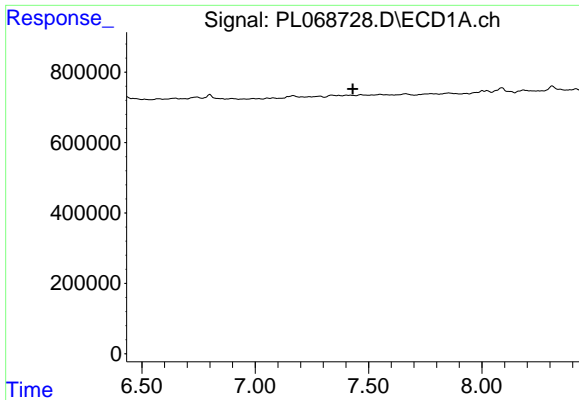
#22 Mirex
 R.T.: 10.553 min
 Delta R.T.: 0.013 min
 Response: 101607
 Conc: 0.13 ng/ml



#23 Chlordane-1
 R.T.: 0.000 min
 Exp R.T. : 5.971 min
 Response: 0
 Conc: N.D.



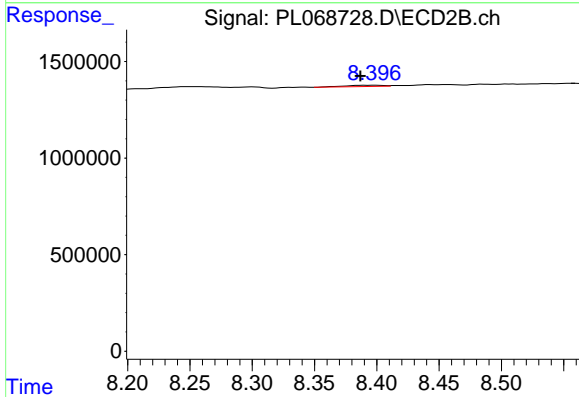
#23 Chlordane-1
 R.T.: 6.979 min
 Delta R.T.: 0.023 min
 Response: 144809
 Conc: 3.43 ng/ml



#26 Chlordane-4

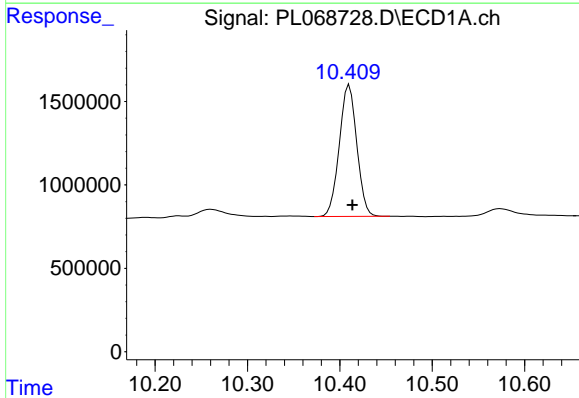
R.T.: 0.000 min
 Exp R.T.: 7.430 min
 Response: 0
 Conc: N.D.

Instrument :
 ECD_L
 ClientSampleId :
 PB138216TB



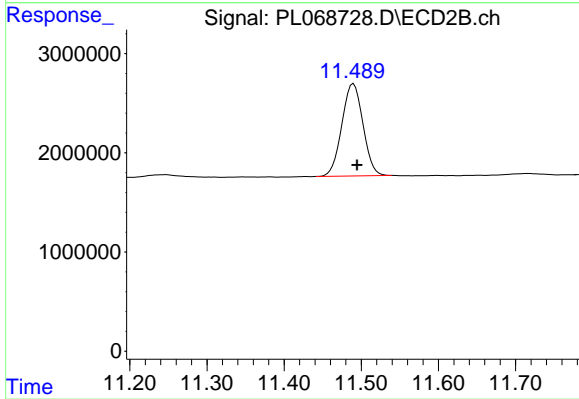
#26 Chlordane-4

R.T.: 8.399 min
 Delta R.T.: 0.012 min
 Response: 145199
 Conc: 0.73 ng/ml



#28 Decachlorobiphenyl

R.T.: 10.410 min
 Delta R.T.: -0.003 min
 Response: 10372709
 Conc: 18.05 ng/ml



#28 Decachlorobiphenyl

R.T.: 11.490 min
 Delta R.T.: -0.005 min
 Response: 17681137
 Conc: 18.22 ng/ml