

Data Path : Z:\pestpcbsrv\HPCHEM1\ECD_L\Data\PL080521\
 Data File : PL068730.D
 Signal(s) : Signal #1: ECD1A.ch Signal #2: ECD2B.ch
 Acq On : 05 Aug 2021 18:48
 Operator : AR\AJ
 Sample : M3276-02MS
 Misc :
 ALS Vial : 13 Sample Multiplier: 1

Instrument :
 ECD_L
 ClientSampleId :
 PRE-MAEC-01MS

Integration File signal 1: autoint1.e
 Integration File signal 2: autoint2.e
 Quant Time: Aug 06 03:11:24 2021
 Quant Method : Z:\pestpcbsrv\HPCHEM1\ECD_L\methods\PL080521.M
 Quant Title : GC Extractables
 QLast Update : Fri Aug 06 03:02:43 2021
 Response via : Initial Calibration
 Integrator: ChemStation

Volume Inj. : 1 µl
 Signal #1 Phase : ZB-MR2 Signal #2 Phase: ZB-MR1
 Signal #1 Info : 30M x 0.32mm x0.2 Signal #2 Info : 30M x 0.32mm x0.5µm

Compound	RT#1	RT#2	Resp#1	Resp#2	ng/ml	ng/ml

System Monitoring Compounds						
1) SA Tetrachlo...	4.639	5.569	12724802	33177935	30.763	32.677
28) SA Decachlor...	10.410	11.489	17853909	30831216	31.067	31.777
Target Compounds						
2) A alpha-BHC	5.346	6.149	38363169	99775411	69.354	73.266
3) MA gamma-BHC...	5.769	6.545	37116813	93598715	68.389	71.939
4) MA Heptachlor	6.180	7.194	37794937	92650519	64.349	69.015
5) MB Aldrin	6.505	7.566	36131533	83768818	67.566	69.406
6) B beta-BHC	6.148	6.797	17897108	45298871	63.487	69.923
7) B delta-BHC	6.409	7.065	36462483	89364406	67.957	70.934
8) B Heptachlo...	7.081	8.031	35527312	80231801	66.659	69.402
9) A Endosulfan I	7.484	8.436	34045041	74470322	67.059	70.616
10) B gamma-Chl...	7.359	8.300	36787104	79975056	67.125	69.832
11) B alpha-Chl...	7.428	8.381	36317233	79355732	65.988	69.099
12) B 4,4'-DDE	7.642	8.568	33388688	75756558	69.124	71.673
13) MA Dieldrin	7.771	8.726	35740245	77317575	69.089	71.350
14) MA Endrin	8.062	8.965	33580209	66306793	69.680	73.050
15) B Endosulfa...	8.371	9.199	32501311	67471982	67.753	73.564
16) A 4,4'-DDD	8.227	9.108	29515112	63126697	68.768	73.876
17) MA 4,4'-DDT	8.489	9.425	32096233	63028523	66.087	66.600
18) B Endrin al...	8.560	9.333	28490916	56302834	75.978	80.345
19) B Endosulfa...	8.791	9.570	35197120	65984838	68.416	72.391
20) A Methoxychlor	9.083	9.910	20005641	34531841	63.907	66.357
21) B Endrin ke...	9.310	10.068	40570662	72531675	69.346	71.230
22) Mirex	9.499	10.536	31807745	52251110	63.482	66.064
24) Chlordane-2	0.000	7.566f	0	83768818	N.D.	1933.337 #
25) Chlordane-3	7.359	8.300	36787104	79975056	701.338	489.576 #
26) Chlordane-4	7.428	8.381	36317233	79355732	652.503	400.135 #
27) Chlordane-5	8.371	0.000	32501311	0	1576.103	N.D. #

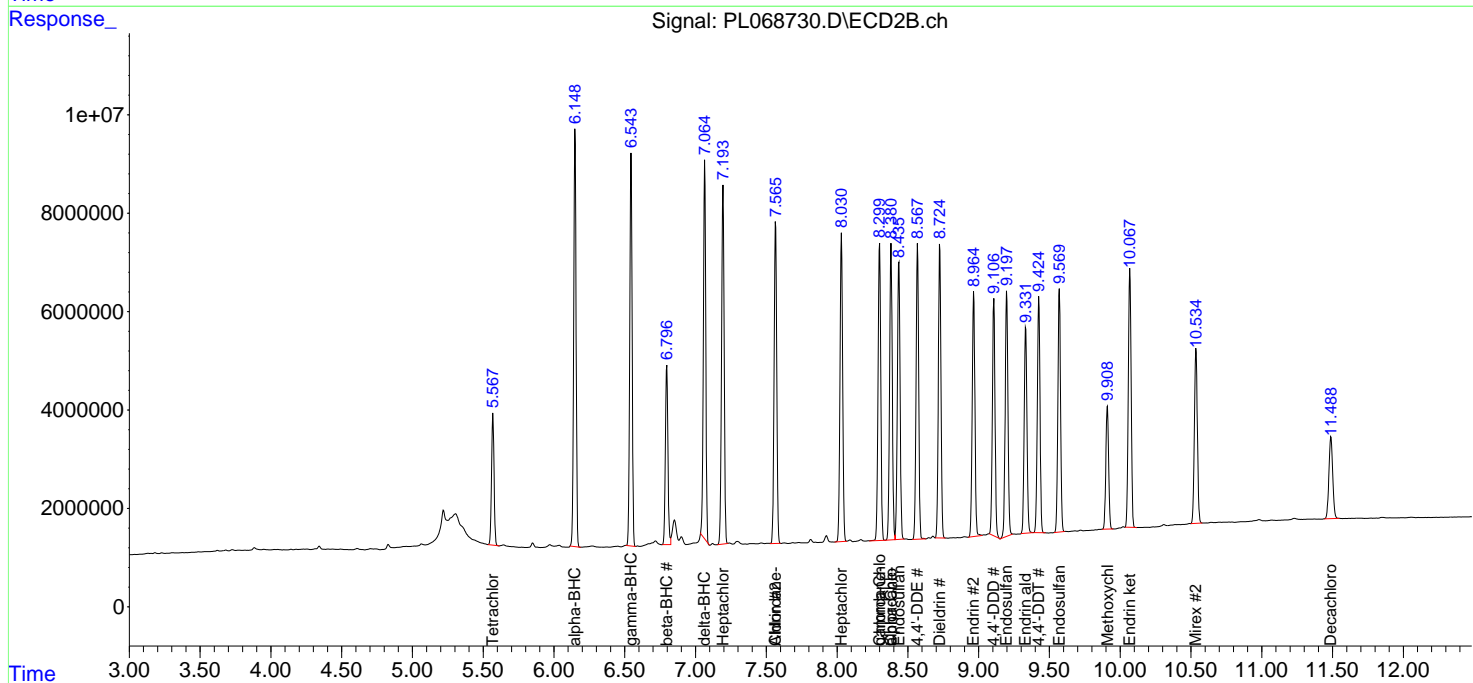
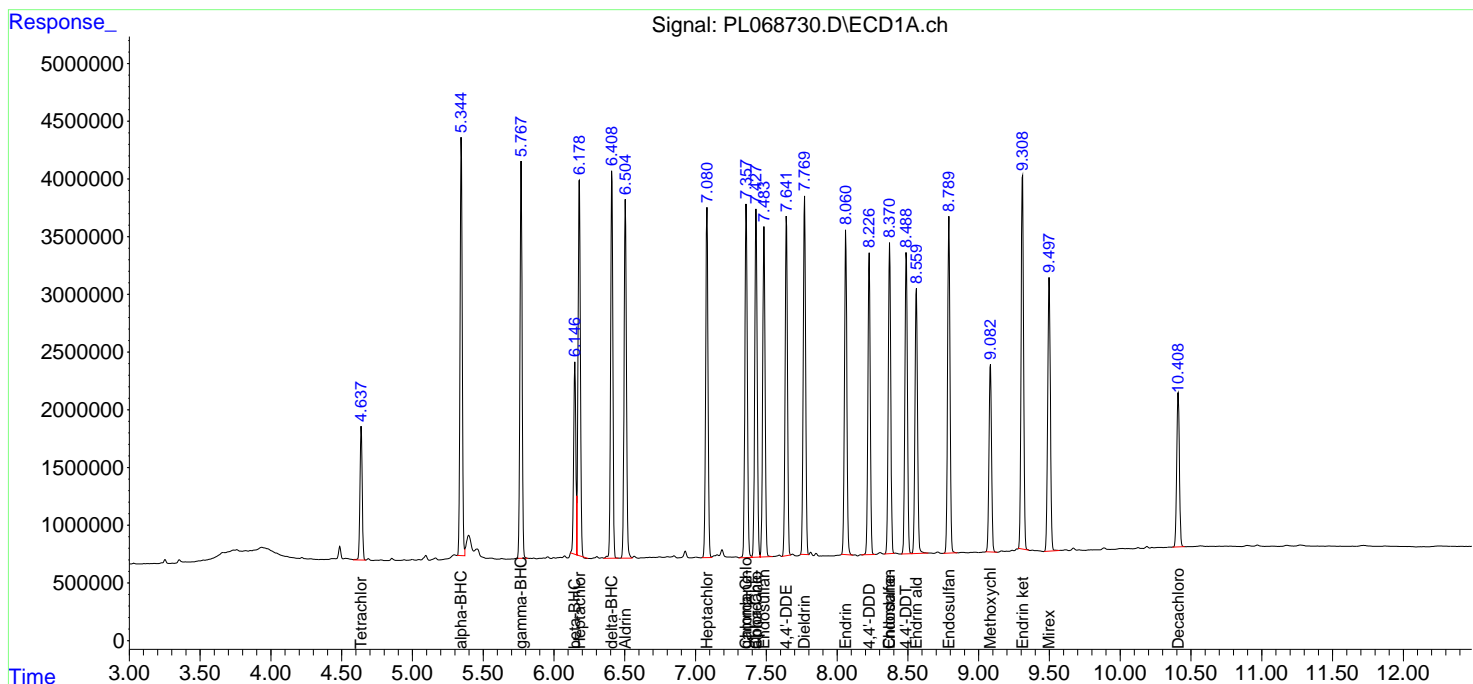
(f)=RT Delta > 1/2 Window (#)=Amounts differ by > 25% (m)=manual int.

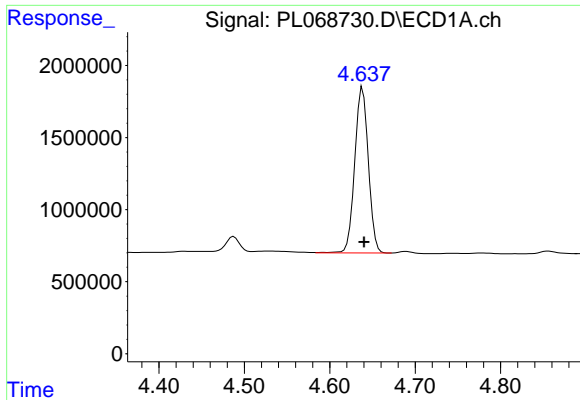
Data Path : Z:\pestpcbsrv\HPCHEM1\ECD_L\Data\PL080521\
 Data File : PL068730.D
 Signal(s) : Signal #1: ECD1A.ch Signal #2: ECD2B.ch
 Acq On : 05 Aug 2021 18:48
 Operator : AR\AJ
 Sample : M3276-02MS
 Misc :
 ALS Vial : 13 Sample Multiplier: 1

Instrument :
 ECD_L
 Client Sampled :
 PRE-MAEC-01MS

Integration File signal 1: autoint1.e
 Integration File signal 2: autoint2.e
 Quant Time: Aug 06 03:11:24 2021
 Quant Method : Z:\pestpcbsrv\HPCHEM1\ECD_L\methods\PL080521.M
 Quant Title : GC Extractables
 QLast Update : Fri Aug 06 03:02:43 2021
 Response via : Initial Calibration
 Integrator: ChemStation

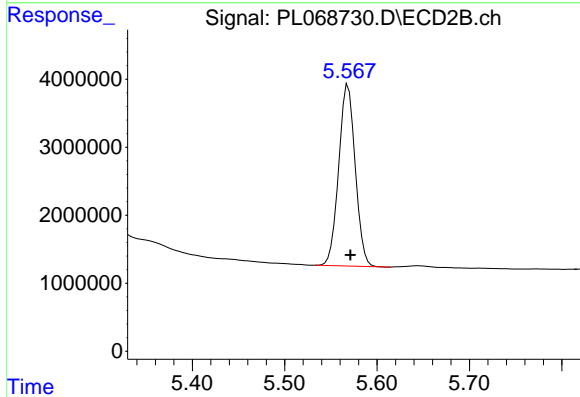
Volume Inj. : 1 µl
 Signal #1 Phase : ZB-MR2 Signal #2 Phase: ZB-MR1
 Signal #1 Info : 30M x 0.32mm x0.2 Signal #2 Info : 30M x 0.32mm x0.5µm



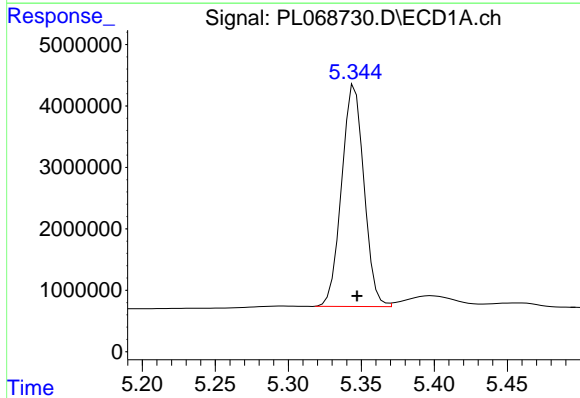


#1 Tetrachloro-m-xylene
 R.T.: 4.639 min
 Delta R.T.: -0.001 min
 Response: 12724802
 Conc: 30.76 ng/ml

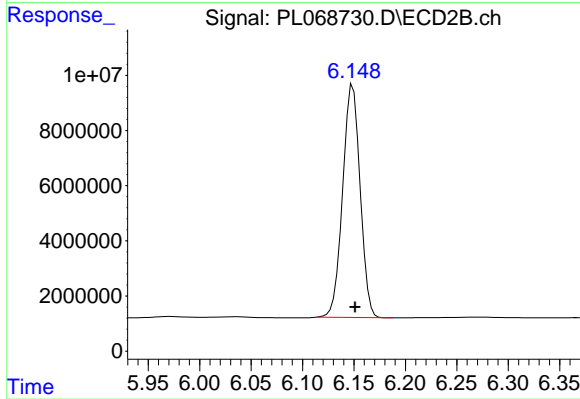
Instrument :
 ECD_L
 ClientSampleId :
 PRE-MAEC-01MS



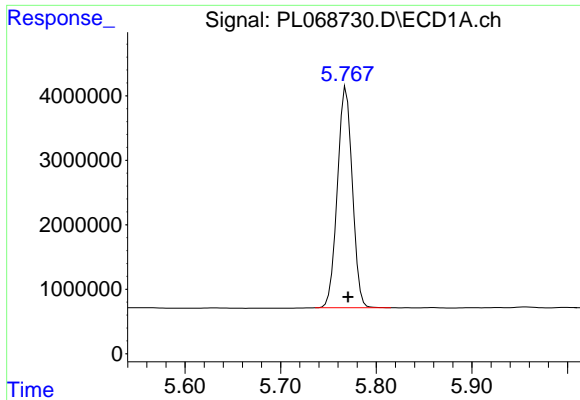
#1 Tetrachloro-m-xylene
 R.T.: 5.569 min
 Delta R.T.: -0.002 min
 Response: 33177935
 Conc: 32.68 ng/ml



#2 alpha-BHC
 R.T.: 5.346 min
 Delta R.T.: -0.002 min
 Response: 38363169
 Conc: 69.35 ng/ml

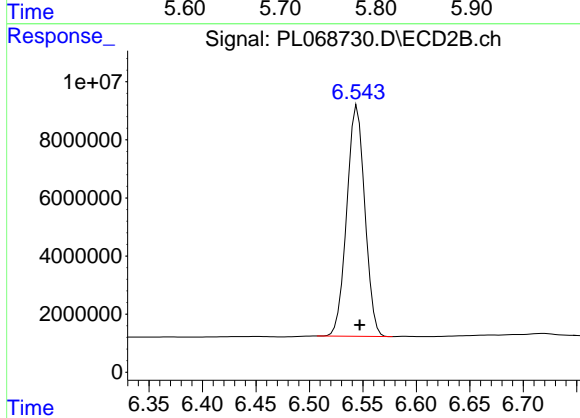


#2 alpha-BHC
 R.T.: 6.149 min
 Delta R.T.: -0.002 min
 Response: 99775411
 Conc: 73.27 ng/ml

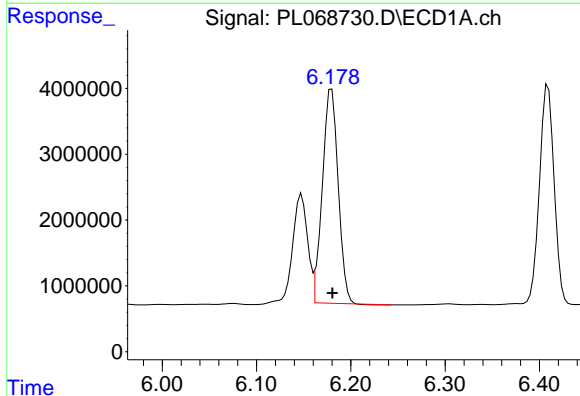


#3 gamma-BHC (Lindane)
 R.T.: 5.769 min
 Delta R.T.: -0.002 min
 Response: 37116813
 Conc: 68.39 ng/ml

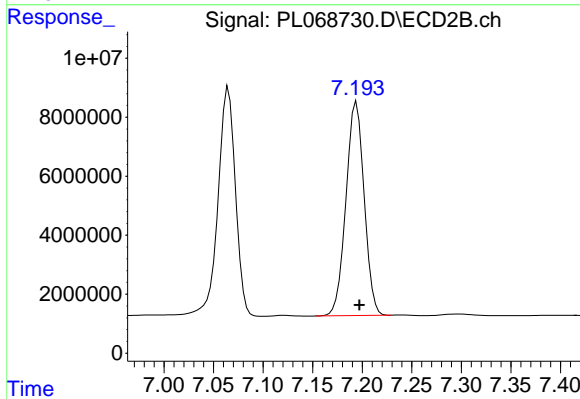
Instrument :
 ECD_L
 ClientSampleId :
 PRE-MAEC-01MS



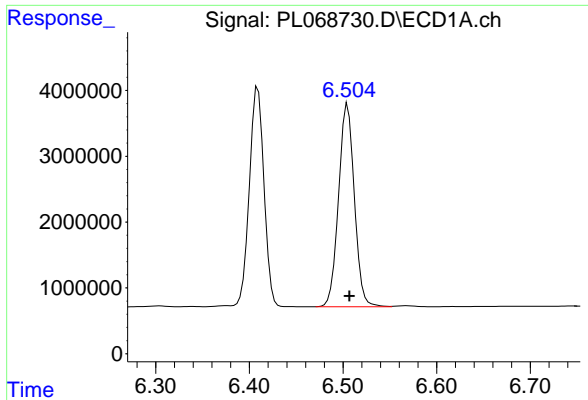
#3 gamma-BHC (Lindane)
 R.T.: 6.545 min
 Delta R.T.: -0.002 min
 Response: 93598715
 Conc: 71.94 ng/ml



#4 Heptachlor
 R.T.: 6.180 min
 Delta R.T.: 0.000 min
 Response: 37794937
 Conc: 64.35 ng/ml

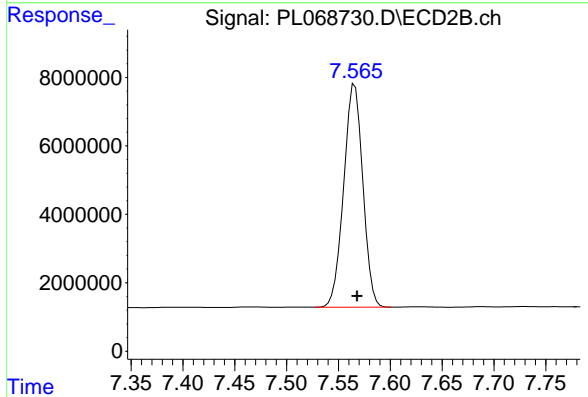


#4 Heptachlor
 R.T.: 7.194 min
 Delta R.T.: -0.003 min
 Response: 92650519
 Conc: 69.02 ng/ml

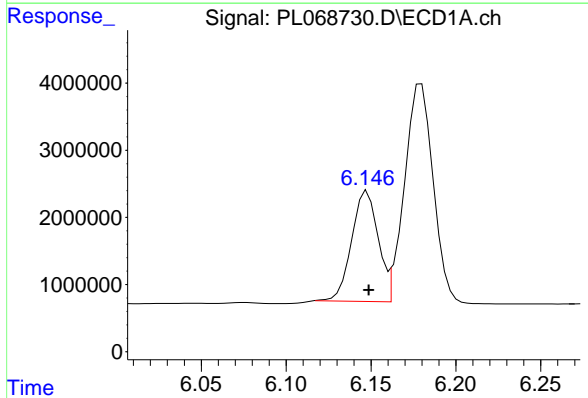


#5 Aldrin
 R.T.: 6.505 min
 Delta R.T.: -0.002 min
 Response: 36131533
 Conc: 67.57 ng/ml

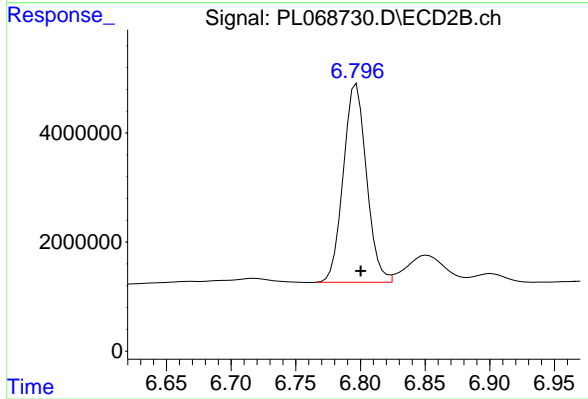
Instrument :
 ECD_L
 ClientSampleId :
 PRE-MAEC-01MS



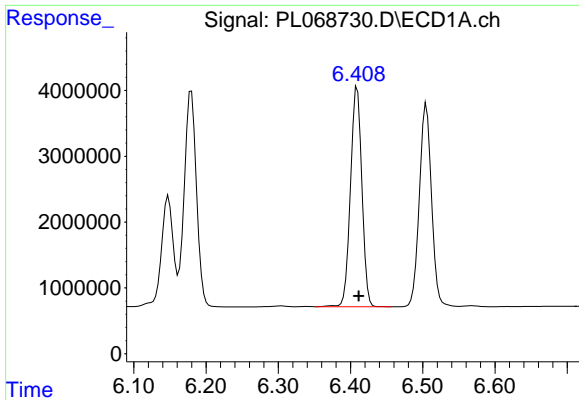
#5 Aldrin
 R.T.: 7.566 min
 Delta R.T.: -0.002 min
 Response: 83768818
 Conc: 69.41 ng/ml



#6 beta-BHC
 R.T.: 6.148 min
 Delta R.T.: 0.000 min
 Response: 17897108
 Conc: 63.49 ng/ml

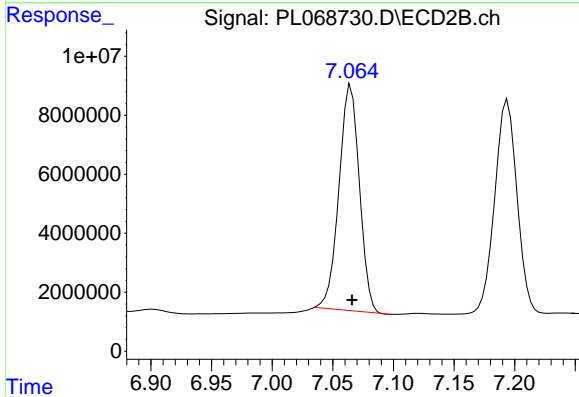


#6 beta-BHC
 R.T.: 6.797 min
 Delta R.T.: -0.003 min
 Response: 45298871
 Conc: 69.92 ng/ml

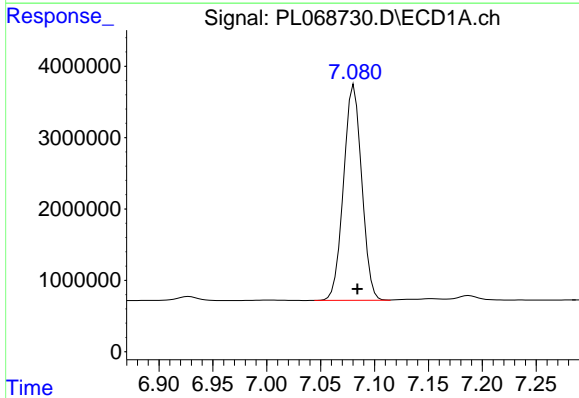


#7 delta-BHC
 R.T.: 6.409 min
 Delta R.T.: -0.002 min
 Response: 36462483
 Conc: 67.96 ng/ml

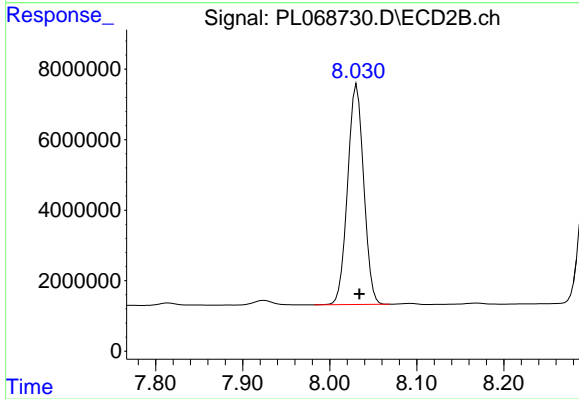
Instrument :
 ECD_L
 ClientSampleId :
 PRE-MAEC-01MS



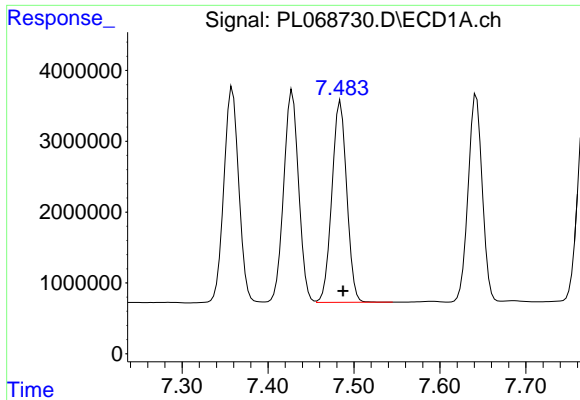
#7 delta-BHC
 R.T.: 7.065 min
 Delta R.T.: -0.001 min
 Response: 89364406
 Conc: 70.93 ng/ml



#8 Heptachlor epoxide
 R.T.: 7.081 min
 Delta R.T.: -0.003 min
 Response: 35527312
 Conc: 66.66 ng/ml

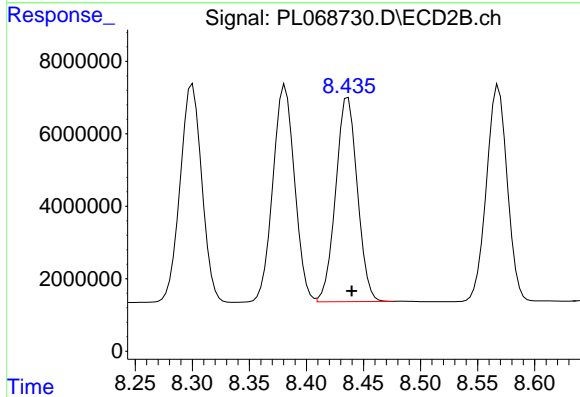


#8 Heptachlor epoxide
 R.T.: 8.031 min
 Delta R.T.: -0.003 min
 Response: 80231801
 Conc: 69.40 ng/ml

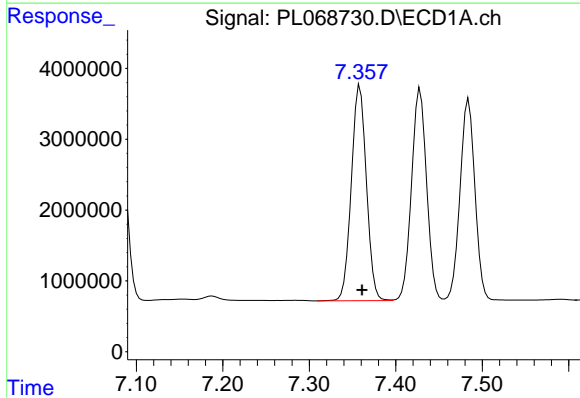


#9 Endosulfan I
 R.T.: 7.484 min
 Delta R.T.: -0.003 min
 Response: 34045041
 Conc: 67.06 ng/ml

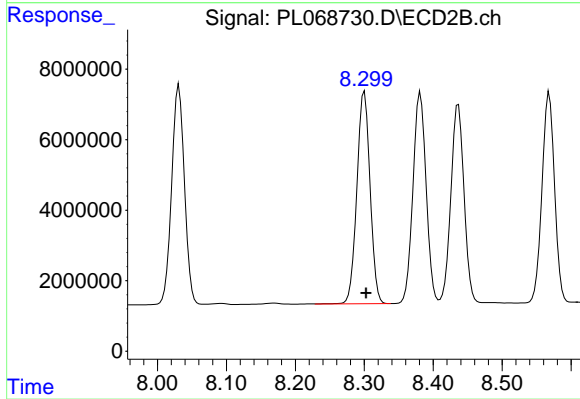
Instrument :
 ECD_L
 ClientSampleId :
 PRE-MAEC-01MS



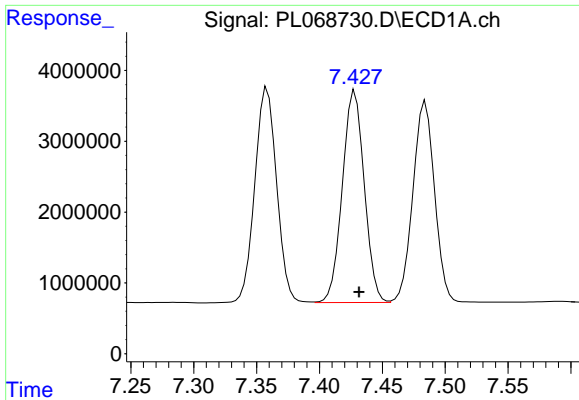
#9 Endosulfan I
 R.T.: 8.436 min
 Delta R.T.: -0.003 min
 Response: 74470322
 Conc: 70.62 ng/ml



#10 gamma-Chlordane
 R.T.: 7.359 min
 Delta R.T.: -0.003 min
 Response: 36787104
 Conc: 67.13 ng/ml

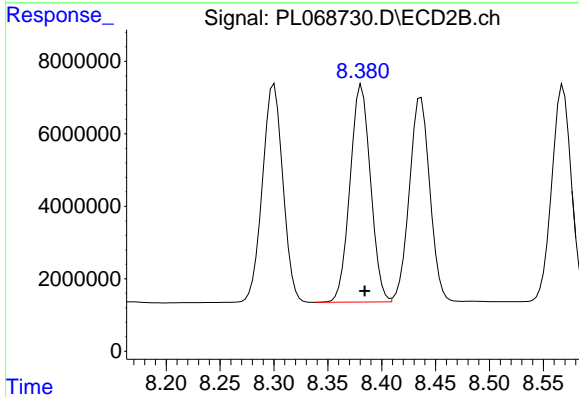


#10 gamma-Chlordane
 R.T.: 8.300 min
 Delta R.T.: -0.003 min
 Response: 79975056
 Conc: 69.83 ng/ml

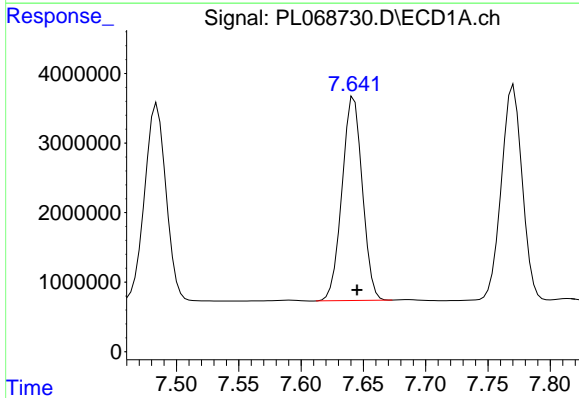


#11 alpha-Chlordane
 R.T.: 7.428 min
 Delta R.T.: -0.003 min
 Response: 36317233
 Conc: 65.99 ng/ml

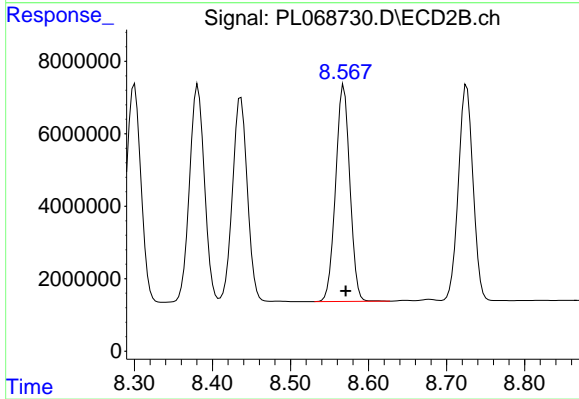
Instrument :
 ECD_L
 ClientSampleId :
 PRE-MAEC-01MS



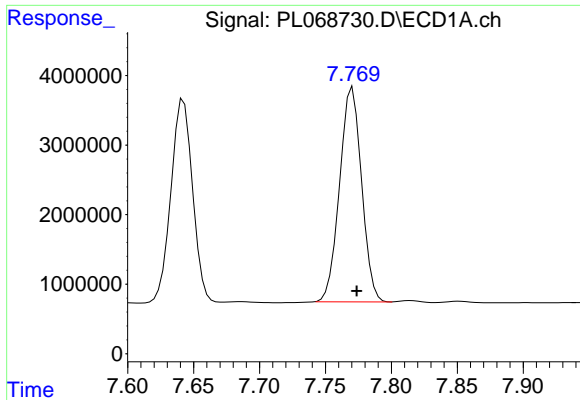
#11 alpha-Chlordane
 R.T.: 8.381 min
 Delta R.T.: -0.003 min
 Response: 79355732
 Conc: 69.10 ng/ml



#12 4,4'-DDE
 R.T.: 7.642 min
 Delta R.T.: -0.003 min
 Response: 33388688
 Conc: 69.12 ng/ml

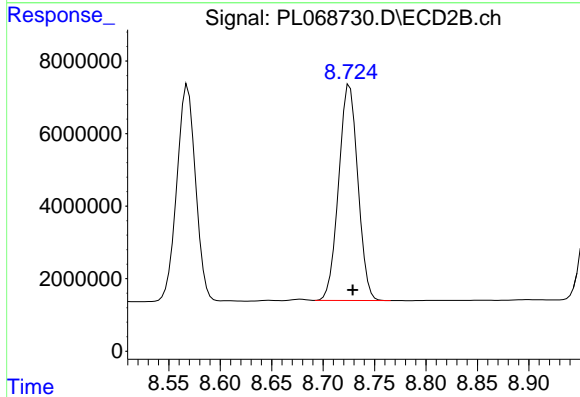


#12 4,4'-DDE
 R.T.: 8.568 min
 Delta R.T.: -0.003 min
 Response: 75756558
 Conc: 71.67 ng/ml

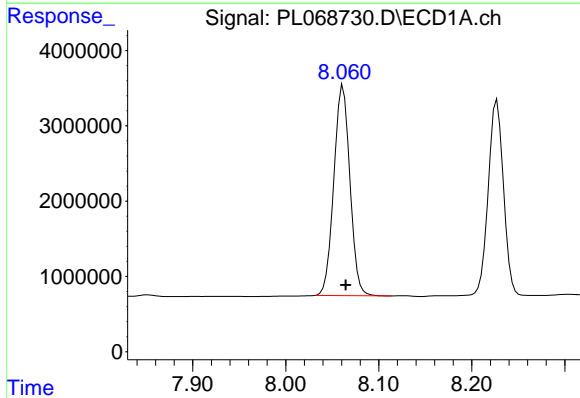


#13 Dieldrin
R.T.: 7.771 min
Delta R.T.: -0.003 min
Response: 35740245
Conc: 69.09 ng/ml

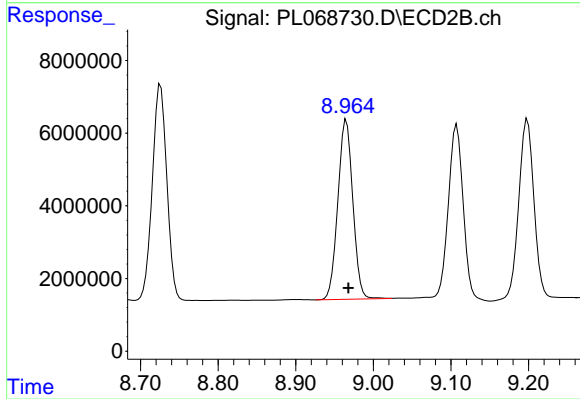
Instrument :
ECD_L
ClientSampleId :
PRE-MAEC-01MS



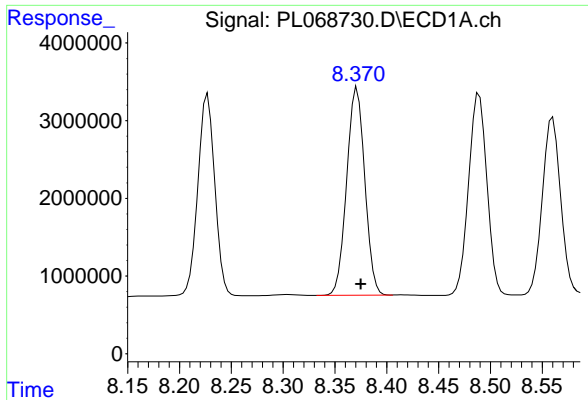
#13 Dieldrin
R.T.: 8.726 min
Delta R.T.: -0.003 min
Response: 77317575
Conc: 71.35 ng/ml



#14 Endrin
R.T.: 8.062 min
Delta R.T.: -0.003 min
Response: 33580209
Conc: 69.68 ng/ml

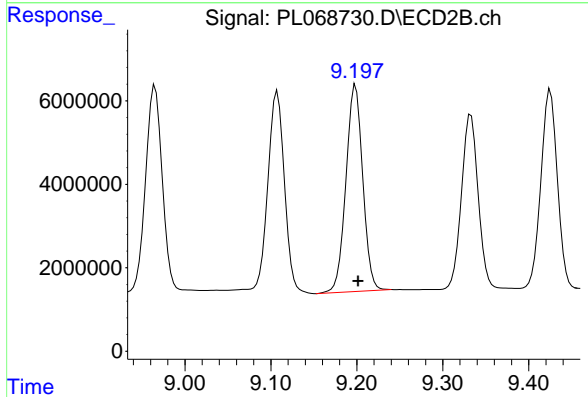


#14 Endrin
R.T.: 8.965 min
Delta R.T.: -0.003 min
Response: 66306793
Conc: 73.05 ng/ml

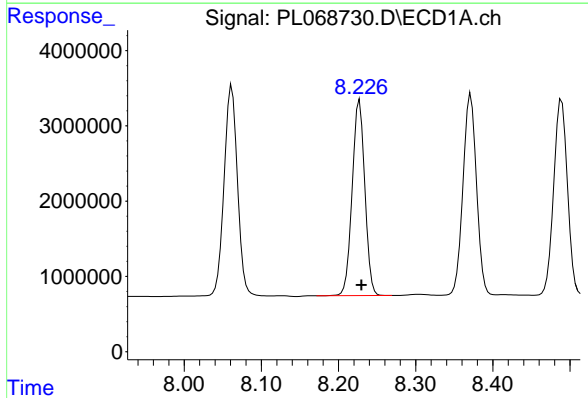


#15 Endosulfan II
 R.T.: 8.371 min
 Delta R.T.: -0.003 min
 Response: 32501311
 Conc: 67.75 ng/ml

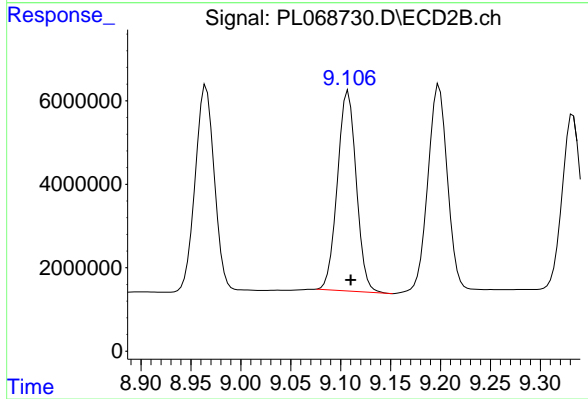
Instrument :
 ECD_L
 ClientSampleId :
 PRE-MAEC-01MS



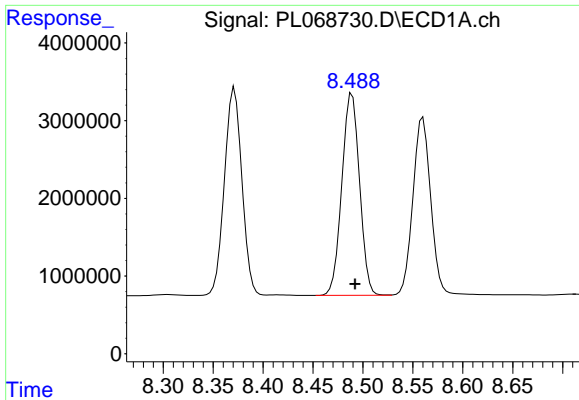
#15 Endosulfan II
 R.T.: 9.199 min
 Delta R.T.: -0.003 min
 Response: 67471982
 Conc: 73.56 ng/ml



#16 4,4'-DDD
 R.T.: 8.227 min
 Delta R.T.: -0.003 min
 Response: 29515112
 Conc: 68.77 ng/ml



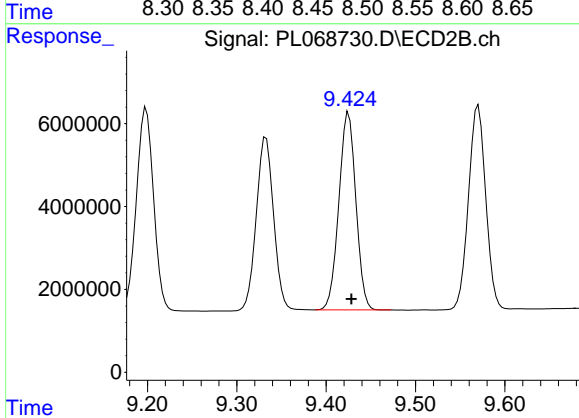
#16 4,4'-DDD
 R.T.: 9.108 min
 Delta R.T.: -0.002 min
 Response: 63126697
 Conc: 73.88 ng/ml



#17 4,4'-DDT

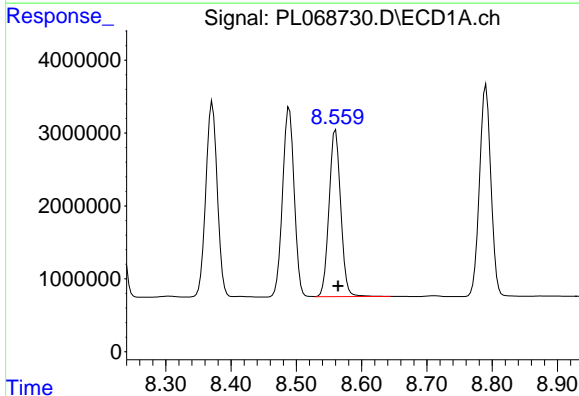
R.T.: 8.489 min
 Delta R.T.: -0.003 min
 Response: 32096233
 Conc: 66.09 ng/ml

Instrument :
 ECD_L
 ClientSampleId :
 PRE-MAEC-01MS



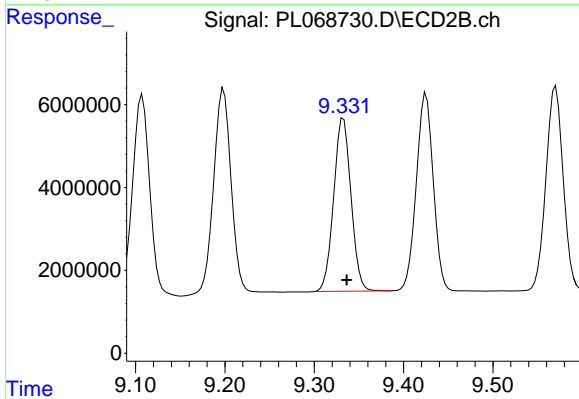
#17 4,4'-DDT

R.T.: 9.425 min
 Delta R.T.: -0.003 min
 Response: 63028523
 Conc: 66.60 ng/ml



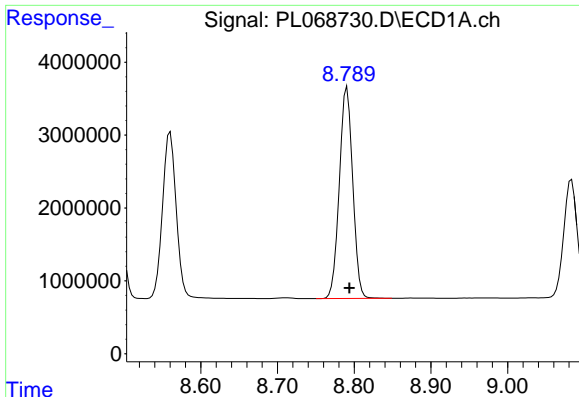
#18 Endrin aldehyde

R.T.: 8.560 min
 Delta R.T.: -0.004 min
 Response: 28490916
 Conc: 75.98 ng/ml



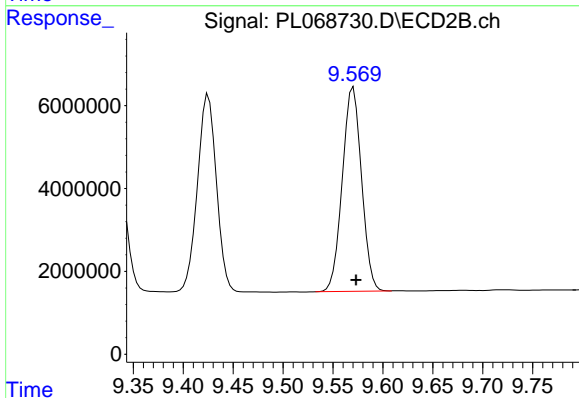
#18 Endrin aldehyde

R.T.: 9.333 min
 Delta R.T.: -0.003 min
 Response: 56302834
 Conc: 80.34 ng/ml

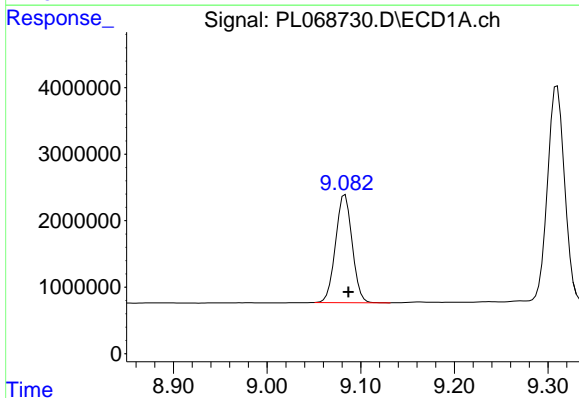


#19 Endosulfan Sulfate
 R.T.: 8.791 min
 Delta R.T.: -0.003 min
 Response: 35197120
 Conc: 68.42 ng/ml

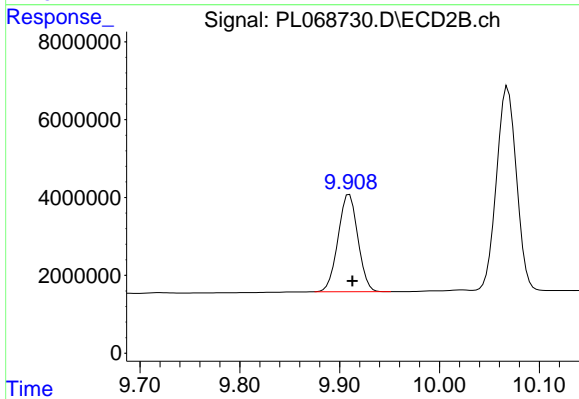
Instrument :
 ECD_L
 ClientSampleId :
 PRE-MAEC-01MS



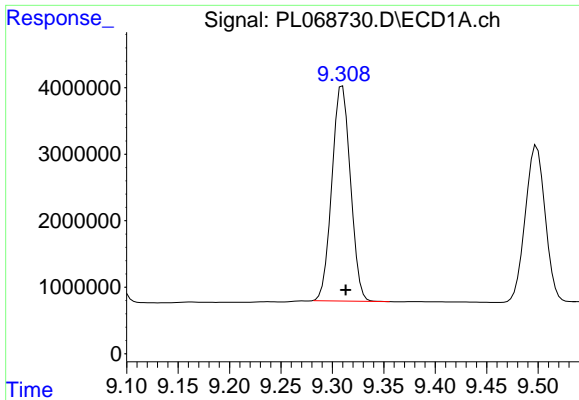
#19 Endosulfan Sulfate
 R.T.: 9.570 min
 Delta R.T.: -0.003 min
 Response: 65984838
 Conc: 72.39 ng/ml



#20 Methoxychlor
 R.T.: 9.083 min
 Delta R.T.: -0.003 min
 Response: 20005641
 Conc: 63.91 ng/ml

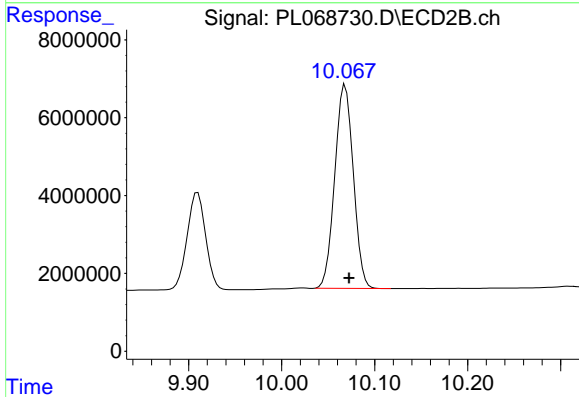


#20 Methoxychlor
 R.T.: 9.910 min
 Delta R.T.: -0.003 min
 Response: 34531841
 Conc: 66.36 ng/ml

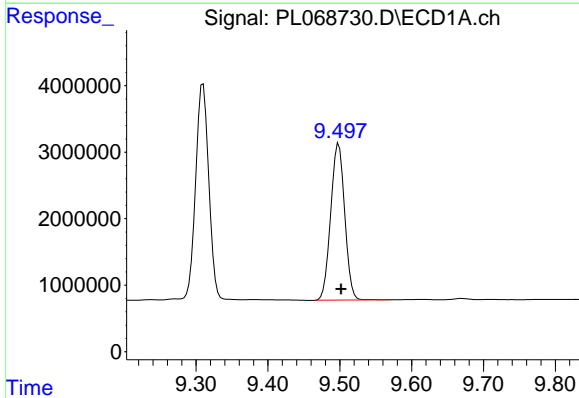


#21 Endrin ketone
 R.T.: 9.310 min
 Delta R.T.: -0.003 min
 Response: 40570662
 Conc: 69.35 ng/ml

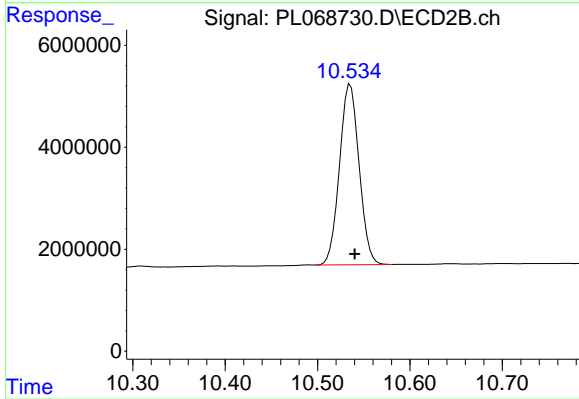
Instrument :
 ECD_L
 ClientSampleId :
 PRE-MAEC-01MS



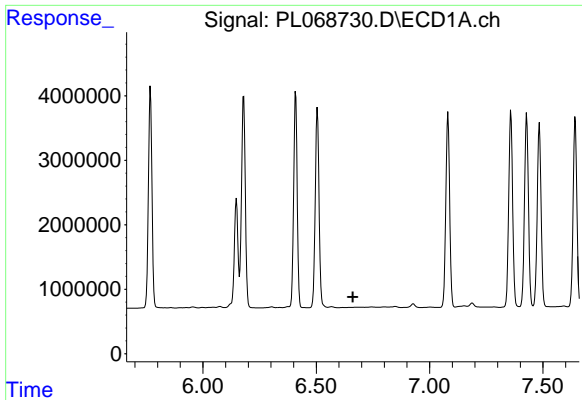
#21 Endrin ketone
 R.T.: 10.068 min
 Delta R.T.: -0.004 min
 Response: 72531675
 Conc: 71.23 ng/ml



#22 Mirex
 R.T.: 9.499 min
 Delta R.T.: -0.003 min
 Response: 31807745
 Conc: 63.48 ng/ml



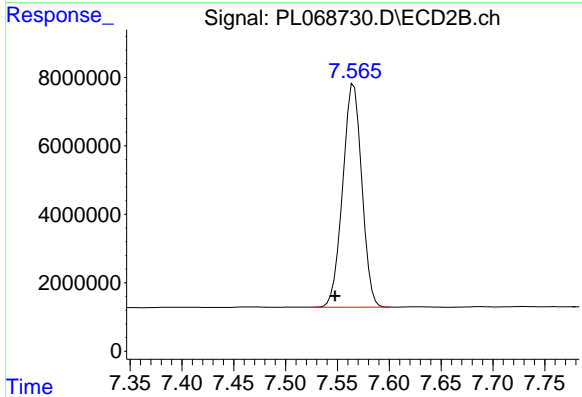
#22 Mirex
 R.T.: 10.536 min
 Delta R.T.: -0.005 min
 Response: 52251110
 Conc: 66.06 ng/ml



#24 Chlordane-2

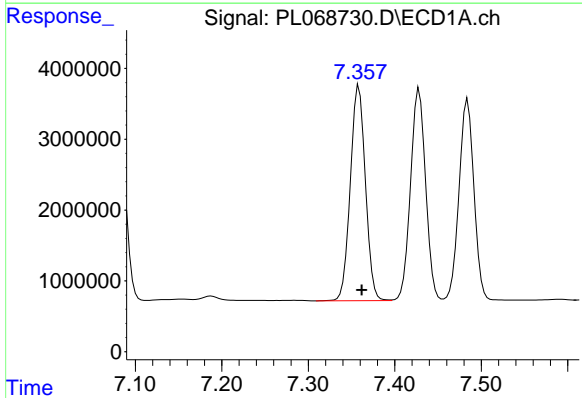
R.T.: 0.000 min
 Exp R.T.: 6.661 min
 Response: 0
 Conc: N.D.

Instrument :
 ECD_L
 ClientSampleId :
 PRE-MAEC-01MS



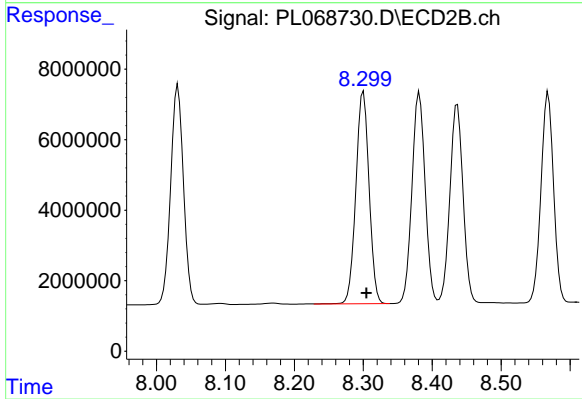
#24 Chlordane-2

R.T.: 7.566 min
 Delta R.T.: 0.018 min
 Response: 83768818
 Conc: 1933.34 ng/ml



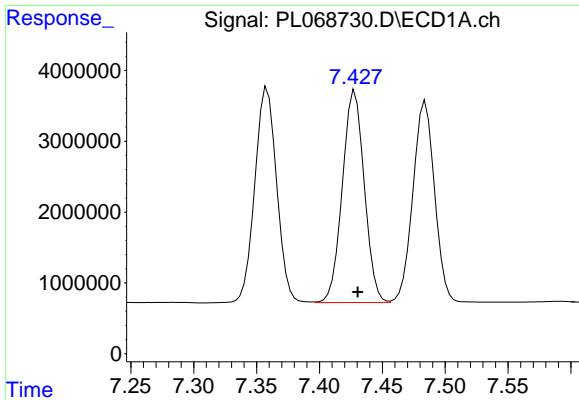
#25 Chlordane-3

R.T.: 7.359 min
 Delta R.T.: -0.003 min
 Response: 36787104
 Conc: 701.34 ng/ml



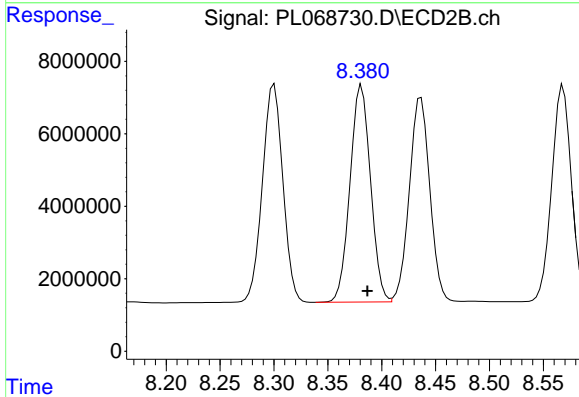
#25 Chlordane-3

R.T.: 8.300 min
 Delta R.T.: -0.004 min
 Response: 79975056
 Conc: 489.58 ng/ml

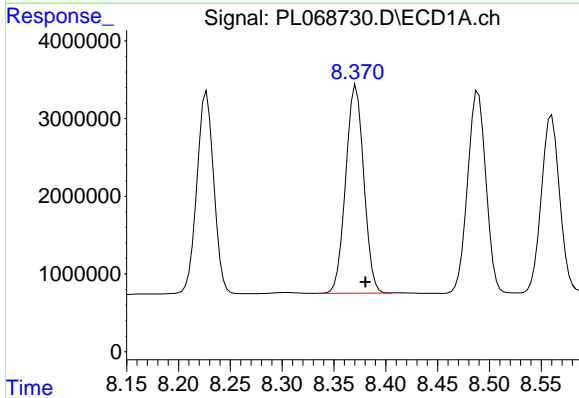


#26 Chlordane-4
 R.T.: 7.428 min
 Delta R.T.: -0.002 min
 Response: 36317233
 Conc: 652.50 ng/ml

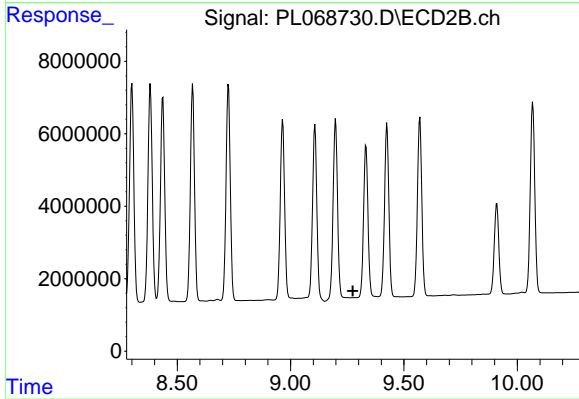
Instrument :
 ECD_L
 ClientSampleId :
 PRE-MAEC-01MS



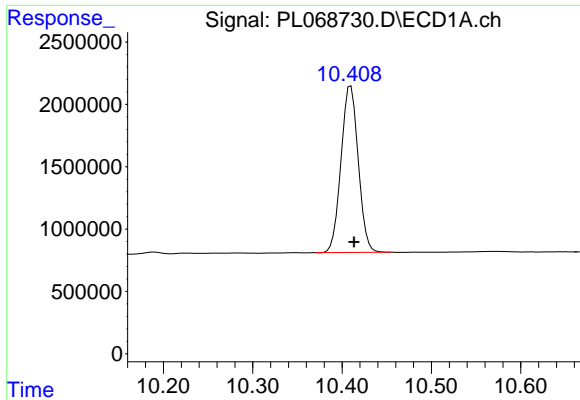
#26 Chlordane-4
 R.T.: 8.381 min
 Delta R.T.: -0.005 min
 Response: 79355732
 Conc: 400.13 ng/ml



#27 Chlordane-5
 R.T.: 8.371 min
 Delta R.T.: -0.009 min
 Response: 32501311
 Conc: 1576.10 ng/ml

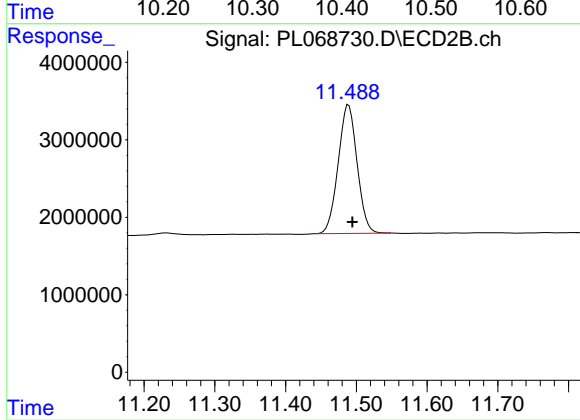


#27 Chlordane-5
 R.T.: 0.000 min
 Exp R.T.: 9.274 min
 Response: 0
 Conc: N.D.



#28 Decachlorobiphenyl
R.T.: 10.410 min
Delta R.T.: -0.004 min
Response: 17853909
Conc: 31.07 ng/ml

Instrument :
ECD_L
ClientSampleId :
PRE-MAEC-01MS



#28 Decachlorobiphenyl
R.T.: 11.489 min
Delta R.T.: -0.005 min
Response: 30831216
Conc: 31.78 ng/ml