

Data Path : Z:\pestpcbsrv\HPCHEM1\ECD_L\Data\PL080524\
 Data File : PL090769.D
 Signal(s) : Signal #1: ECD1A.ch Signal #2: ECD2B.ch
 Acq On : 05 Aug 2024 14:27
 Operator : AR\AJ
 Sample : I.BLK
 Misc :
 ALS Vial : 2 Sample Multiplier: 1

Instrument :
 ECD_L
 ClientSampleId :

Integration File signal 1: autoint1.e
 Integration File signal 2: autoint2.e
 Quant Time: Aug 06 10:57:20 2024
 Quant Method : Z:\pestpcbsrv\HPCHEM1\ECD_L\methods\PL080524.M
 Quant Title : GC Extractables
 QLast Update : Tue Aug 06 10:55:36 2024
 Response via : Initial Calibration
 Integrator: ChemStation

Volume Inj. : 1 µl
 Signal #1 Phase : ZB-MR2 Signal #2 Phase: ZB-MR1
 Signal #1 Info : 30M x 0.32mm x0.2 Signal #2 Info : 30M x 0.32mm x0.5µm

Compound	RT#1	RT#2	Resp#1	Resp#2	ng/ml	ng/ml

System Monitoring Compounds						
1) SA Tetrachlo...	3.545	2.787	34861757	30437429	18.005	17.606
28) SA Decachlor...	9.058	7.929	27575197	31347151	19.193	18.780
Target Compounds						
3) MA gamma-BHC...	0.000	3.639f	0	473268	N.D.	0.202 #
5) MB Aldrin	0.000	4.246	0	214571	N.D.	0.097 #
6) B beta-BHC	0.000	3.926	0	258858	N.D.	0.243 #
7) B delta-BHC	0.000	4.150	0	24498	N.D.	0.011 #
8) B Heptachlo...	0.000	4.726f	0	13562	N.D.	0.007 #
9) A Endosulfan I	0.000	5.125	0	387914	N.D.	0.201 #
10) B gamma-Chl...	0.000	4.995	0	125842	N.D.	0.059 #
11) B alpha-Chl...	0.000	5.054	0	196382	N.D.	0.092 #
12) B 4,4'-DDE	0.000	5.255	0	34740	N.D.	0.019 #
13) MA Dieldrin	0.000	5.371	0	382721	N.D.	0.185 #
14) MA Endrin	0.000	5.671f	0	84571	N.D.	0.046 #
16) A 4,4'-DDD	0.000	5.805	0	21803	N.D.	0.014 #
17) MA 4,4'-DDT	0.000	6.066	0	427457	N.D.	0.258 #
18) B Endrin al...	0.000	6.145f	0	194177	N.D.	0.137 #
19) B Endosulfa...	0.000	6.349	0	59181	N.D.	0.034 #
20) A Methoxychlor	0.000	6.619	0	49118	N.D.	0.053 #
23) Chlordane-1	0.000	3.781	0	133107	N.D.	1.974 #
24) Chlordane-2	0.000	4.340f	0	370024	N.D.	4.449 #
25) Chlordane-3	0.000	4.995	0	125842	N.D.	0.562 #
26) Chlordane-4	0.000	5.054	0	196382	N.D.	0.918 #
27) Chlordane-5	0.000	5.751f	0	497369	N.D.	7.442 #

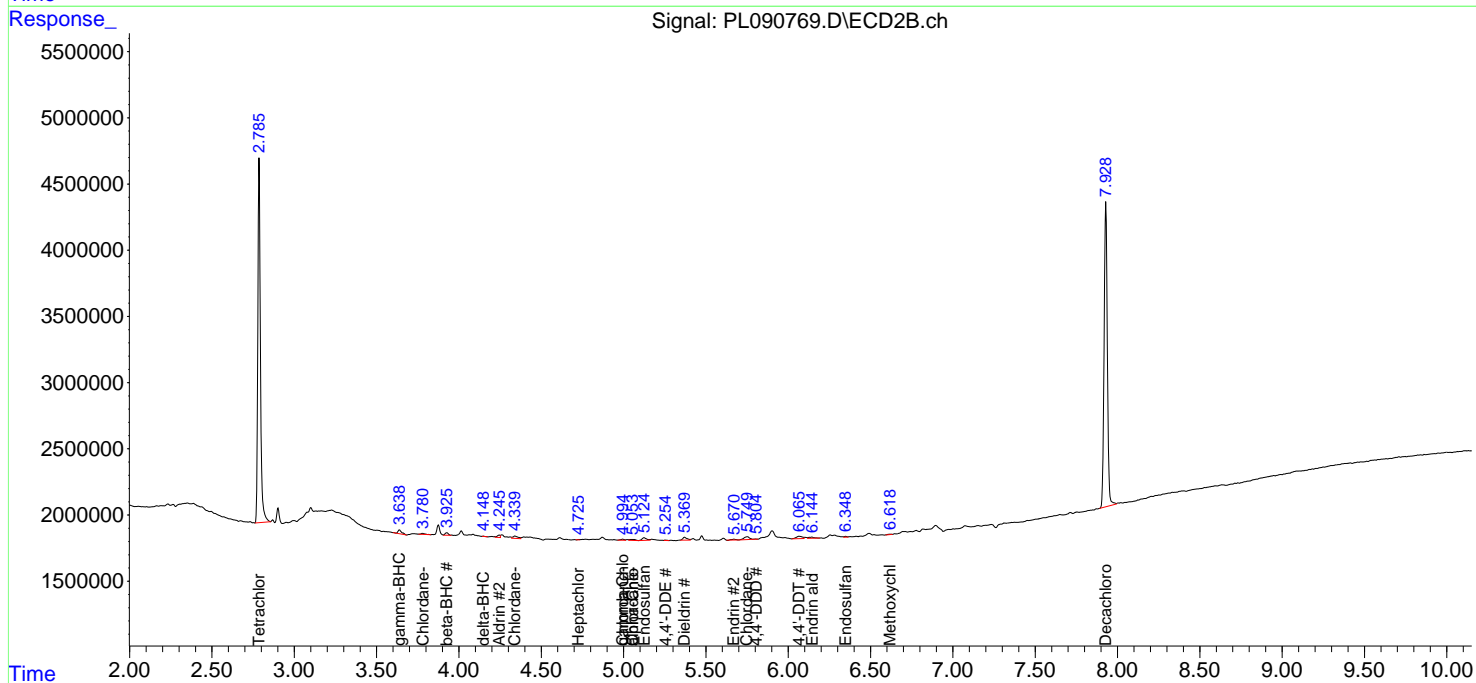
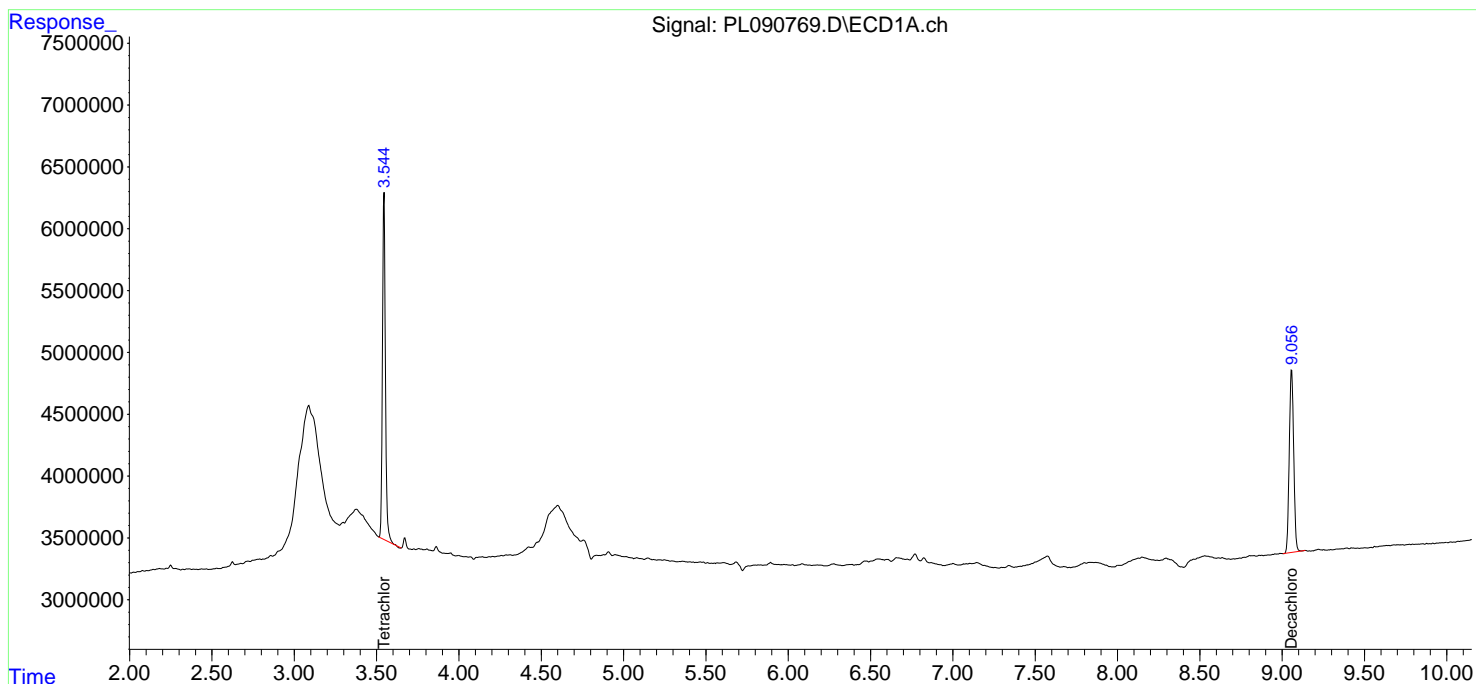
(f)=RT Delta > 1/2 Window (#)=Amounts differ by > 25% (m)=manual int.

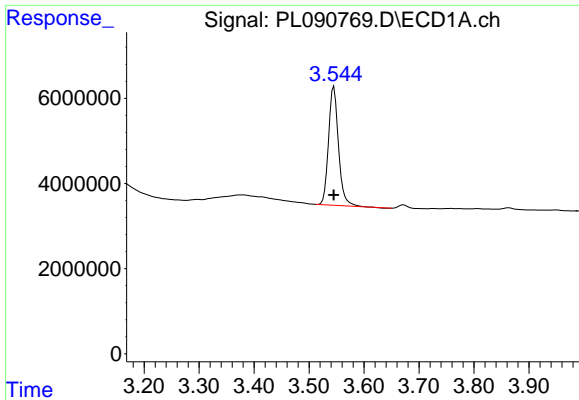
Data Path : Z:\pestpcbsrv\HPCHEM1\ECD_L\Data\PL080524\
 Data File : PL090769.D
 Signal(s) : Signal #1: ECD1A.ch Signal #2: ECD2B.ch
 Acq On : 05 Aug 2024 14:27
 Operator : AR\AJ
 Sample : I.BLK
 Misc :
 ALS Vial : 2 Sample Multiplier: 1

Instrument :
 ECD_L
 ClientSampleId :

Integration File signal 1: autoint1.e
 Integration File signal 2: autoint2.e
 Quant Time: Aug 06 10:57:20 2024
 Quant Method : Z:\pestpcbsrv\HPCHEM1\ECD_L\methods\PL080524.M
 Quant Title : GC Extractables
 QLast Update : Tue Aug 06 10:55:36 2024
 Response via : Initial Calibration
 Integrator: ChemStation

Volume Inj. : 1 µl
 Signal #1 Phase : ZB-MR2 Signal #2 Phase: ZB-MR1
 Signal #1 Info : 30M x 0.32mm x0.2 Signal #2 Info : 30M x 0.32mm x0.5µm

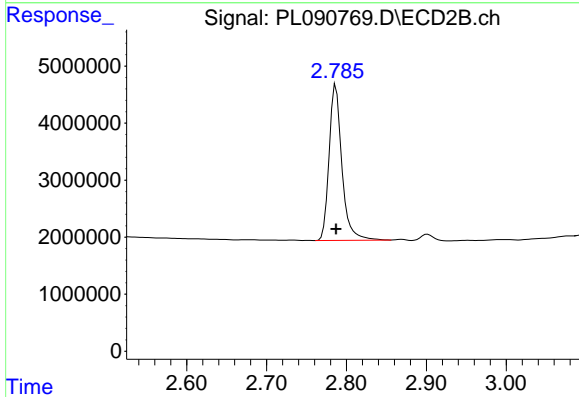




#1 Tetrachloro-m-xylene

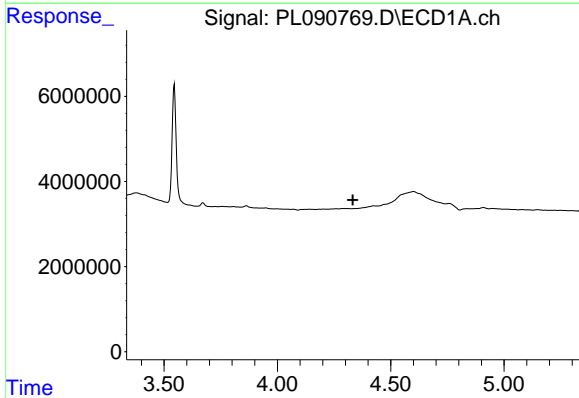
R.T.: 3.545 min
 Delta R.T.: 0.000 min
 Response: 34861757
 Conc: 18.00 ng/ml

Instrument :
 ECD_L
 ClientSampleId :



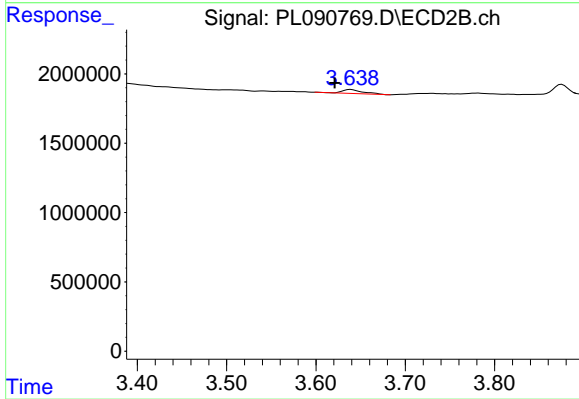
#1 Tetrachloro-m-xylene

R.T.: 2.787 min
 Delta R.T.: 0.000 min
 Response: 30437429
 Conc: 17.61 ng/ml



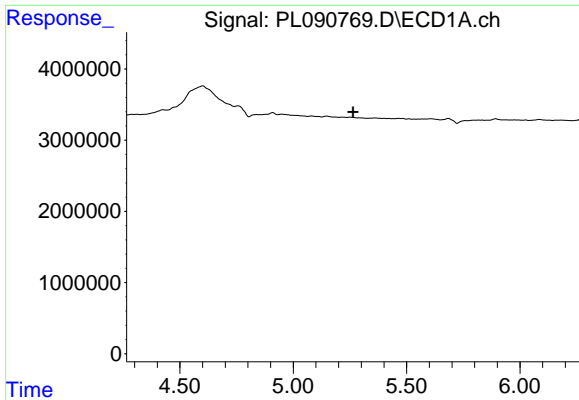
#3 gamma-BHC (Lindane)

R.T.: 0.000 min
 Exp R.T. : 4.333 min
 Response: 0
 Conc: N.D.



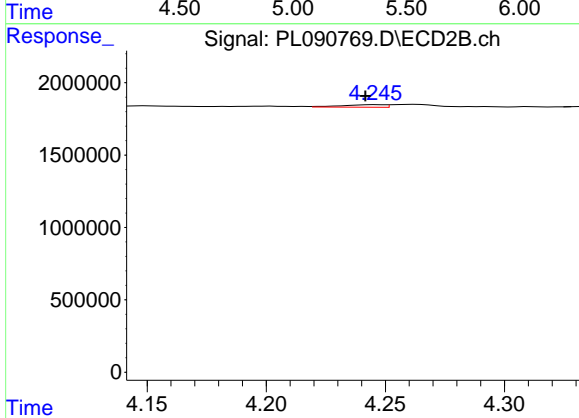
#3 gamma-BHC (Lindane)

R.T.: 3.639 min
 Delta R.T.: 0.018 min
 Response: 473268
 Conc: 0.20 ng/ml

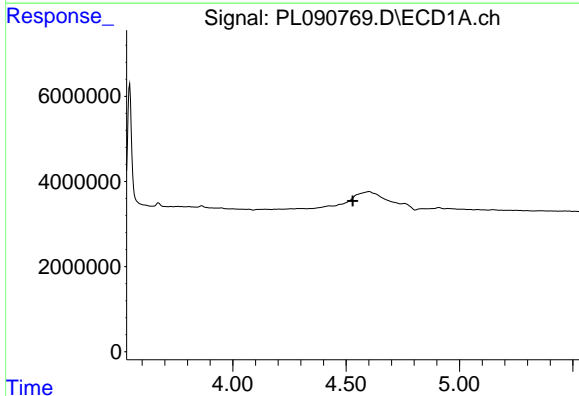


#5 Aldrin
 R.T.: 0.000 min
 Exp R.T.: 5.264 min
 Response: 0
 Conc: N.D.

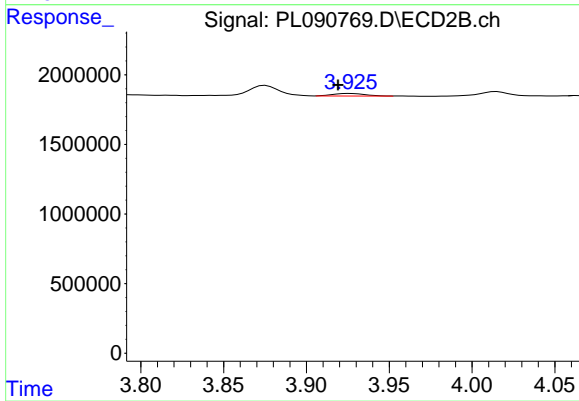
Instrument :
 ECD_L
 ClientSampleId :



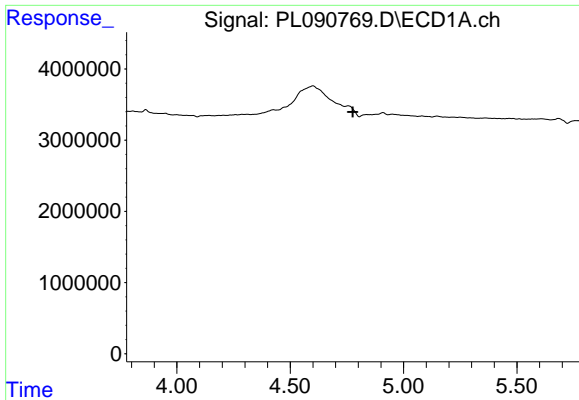
#5 Aldrin
 R.T.: 4.246 min
 Delta R.T.: 0.004 min
 Response: 214571
 Conc: 0.10 ng/ml



#6 beta-BHC
 R.T.: 0.000 min
 Exp R.T.: 4.529 min
 Response: 0
 Conc: N.D.



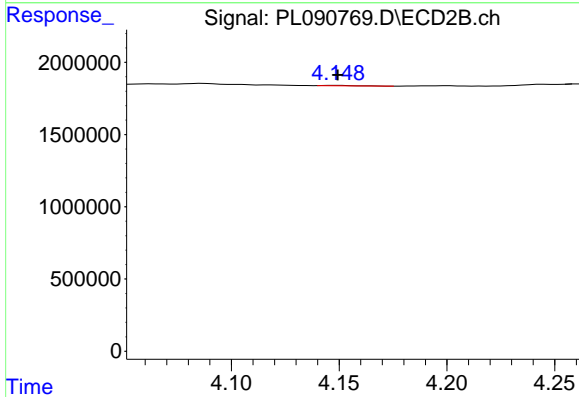
#6 beta-BHC
 R.T.: 3.926 min
 Delta R.T.: 0.007 min
 Response: 258858
 Conc: 0.24 ng/ml



#7 delta-BHC

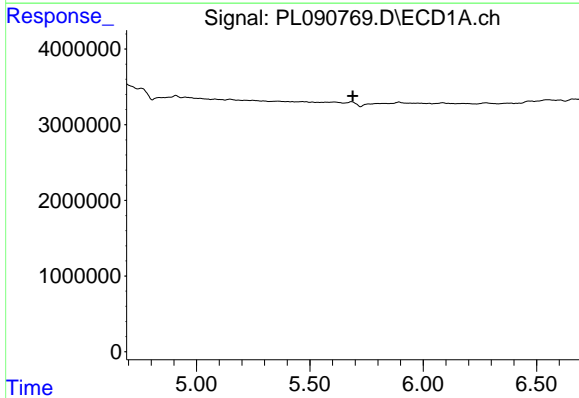
R.T.: 0.000 min
 Exp R.T.: 4.776 min
 Response: 0
 Conc: N.D.

Instrument :
 ECD_L
 ClientSampleId :



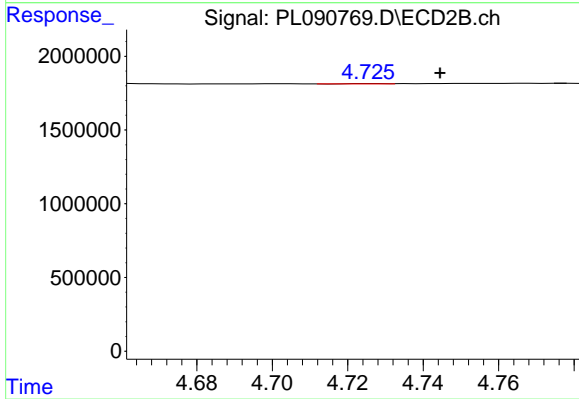
#7 delta-BHC

R.T.: 4.150 min
 Delta R.T.: 0.000 min
 Response: 24498
 Conc: 0.01 ng/ml



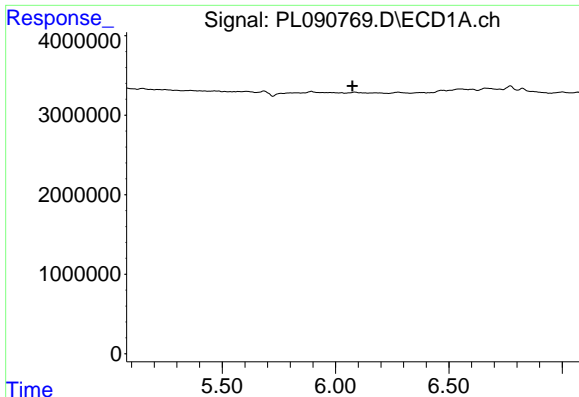
#8 Heptachlor epoxide

R.T.: 0.000 min
 Exp R.T.: 5.690 min
 Response: 0
 Conc: N.D.



#8 Heptachlor epoxide

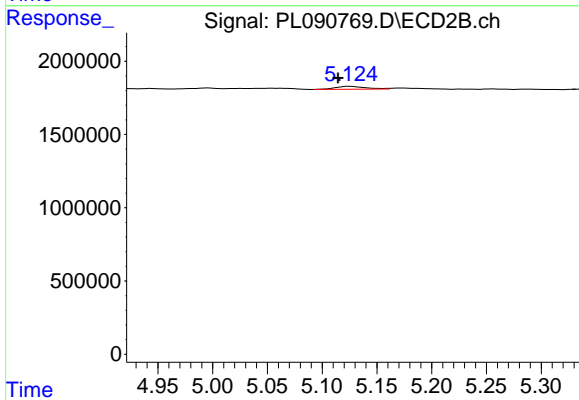
R.T.: 4.726 min
 Delta R.T.: -0.018 min
 Response: 13562
 Conc: 0.01 ng/ml



#9 Endosulfan I

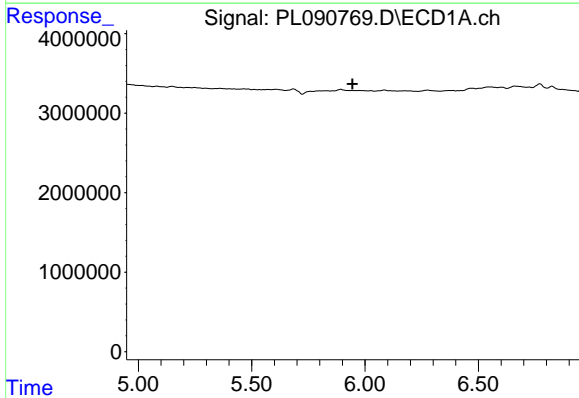
R.T.: 0.000 min
 Exp R.T. : 6.075 min
 Response: 0
 Conc: N.D.

Instrument :
 ECD_L
 ClientSampleId :



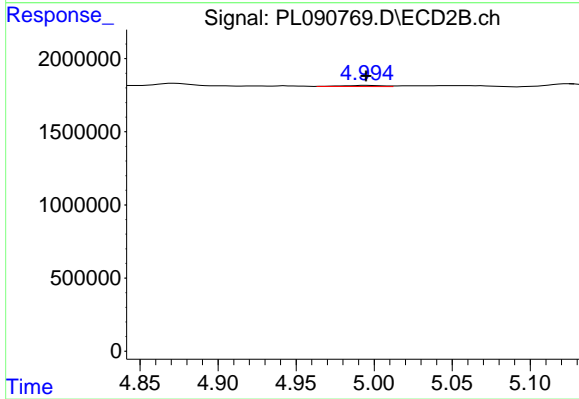
#9 Endosulfan I

R.T.: 5.125 min
 Delta R.T.: 0.011 min
 Response: 387914
 Conc: 0.20 ng/ml



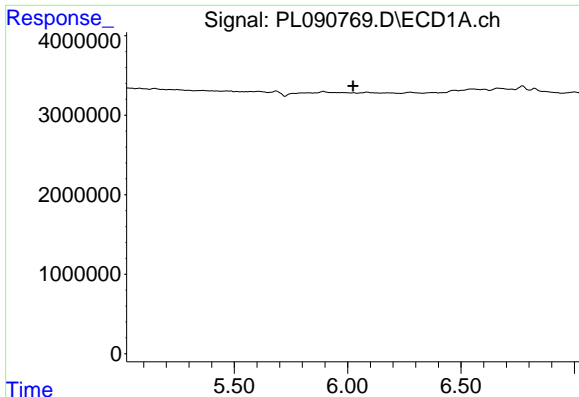
#10 gamma-Chlordane

R.T.: 0.000 min
 Exp R.T. : 5.945 min
 Response: 0
 Conc: N.D.



#10 gamma-Chlordane

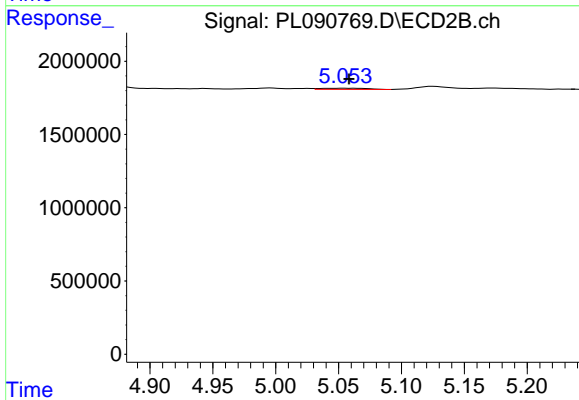
R.T.: 4.995 min
 Delta R.T.: 0.000 min
 Response: 125842
 Conc: 0.06 ng/ml



#11 alpha-Chlordane

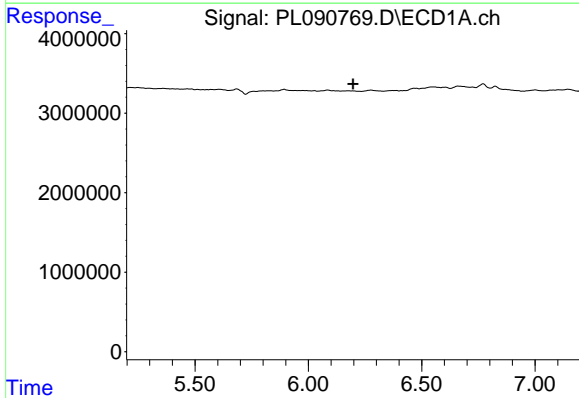
R.T.: 0.000 min
 Exp R.T. : 6.024 min
 Response: 0
 Conc: N.D.

Instrument :
 ECD_L
 ClientSampleId :



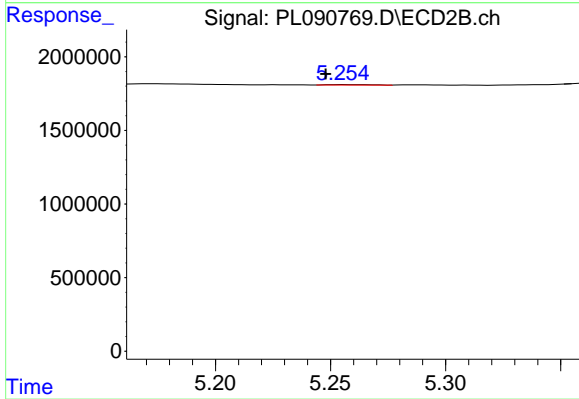
#11 alpha-Chlordane

R.T.: 5.054 min
 Delta R.T.: -0.004 min
 Response: 196382
 Conc: 0.09 ng/ml



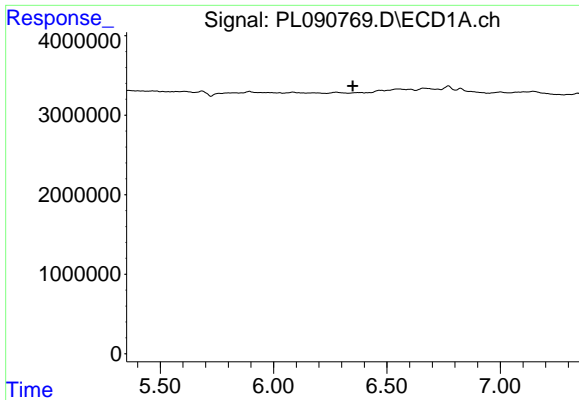
#12 4,4'-DDE

R.T.: 0.000 min
 Exp R.T. : 6.197 min
 Response: 0
 Conc: N.D.



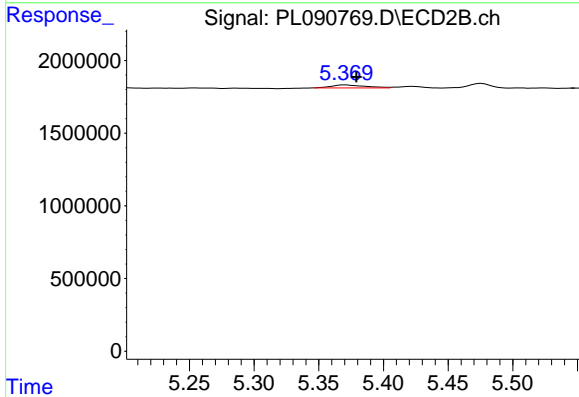
#12 4,4'-DDE

R.T.: 5.255 min
 Delta R.T.: 0.007 min
 Response: 34740
 Conc: 0.02 ng/ml

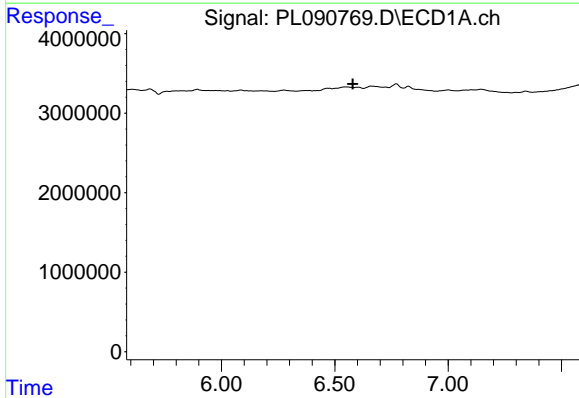


#13 Dieldrin
 R.T.: 0.000 min
 Exp R.T. : 6.350 min
 Response: 0
 Conc: N.D.

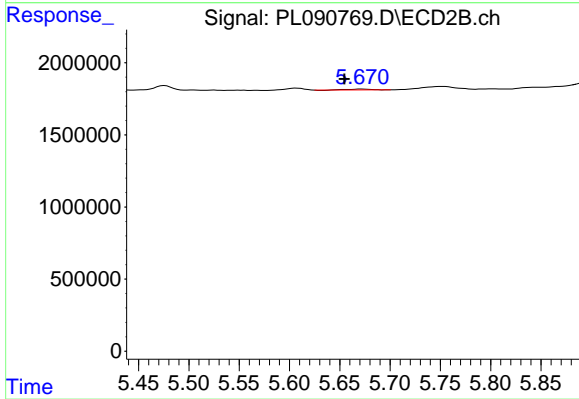
Instrument :
 ECD_L
 ClientSampleId :



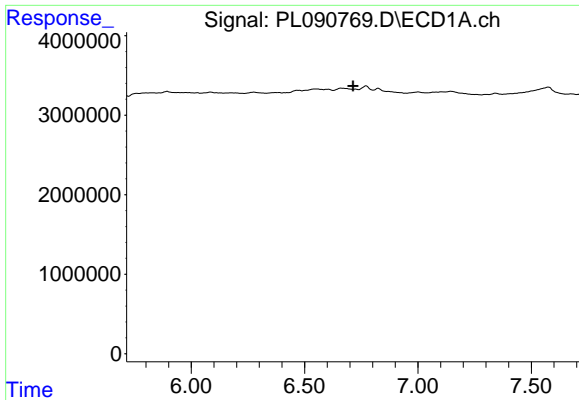
#13 Dieldrin
 R.T.: 5.371 min
 Delta R.T.: -0.009 min
 Response: 382721
 Conc: 0.19 ng/ml



#14 Endrin
 R.T.: 0.000 min
 Exp R.T. : 6.580 min
 Response: 0
 Conc: N.D.

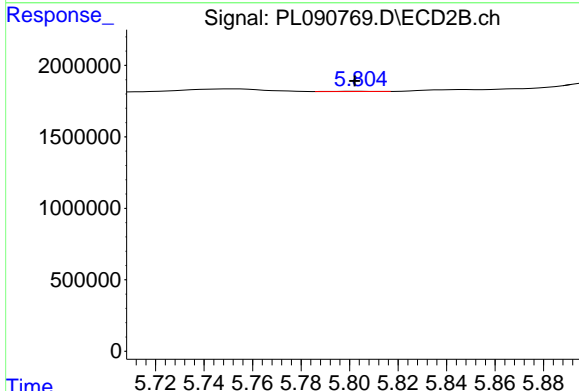


#14 Endrin
 R.T.: 5.671 min
 Delta R.T.: 0.017 min
 Response: 84571
 Conc: 0.05 ng/ml

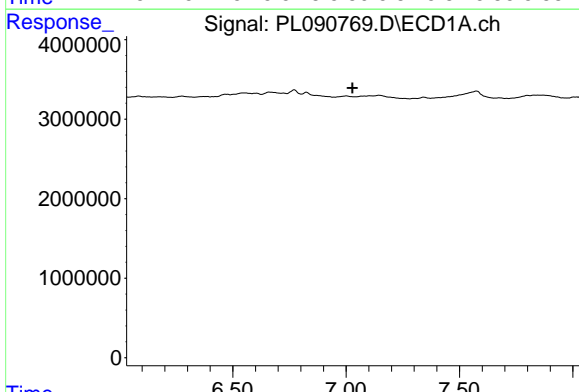


#16 4,4'-DDD
 R.T.: 0.000 min
 Exp R.T.: 6.714 min
 Response: 0
 Conc: N.D.

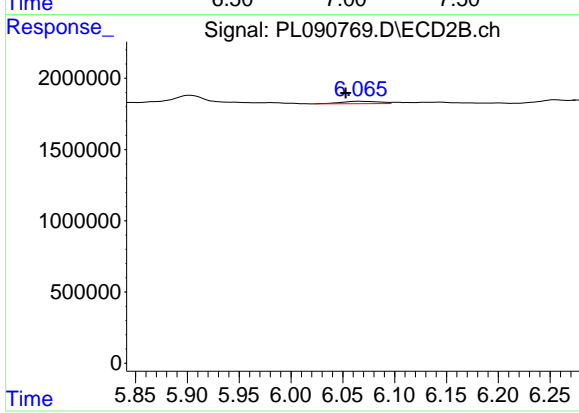
Instrument :
 ECD_L
 ClientSampleId :



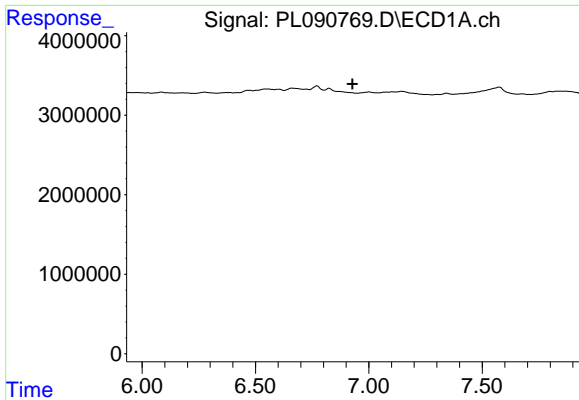
#16 4,4'-DDD
 R.T.: 5.805 min
 Delta R.T.: 0.003 min
 Response: 21803
 Conc: 0.01 ng/ml



#17 4,4'-DDT
 R.T.: 0.000 min
 Exp R.T.: 7.028 min
 Response: 0
 Conc: N.D.



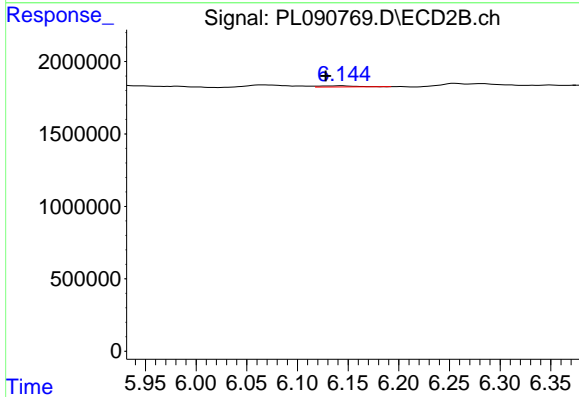
#17 4,4'-DDT
 R.T.: 6.066 min
 Delta R.T.: 0.013 min
 Response: 427457
 Conc: 0.26 ng/ml



#18 Endrin aldehyde

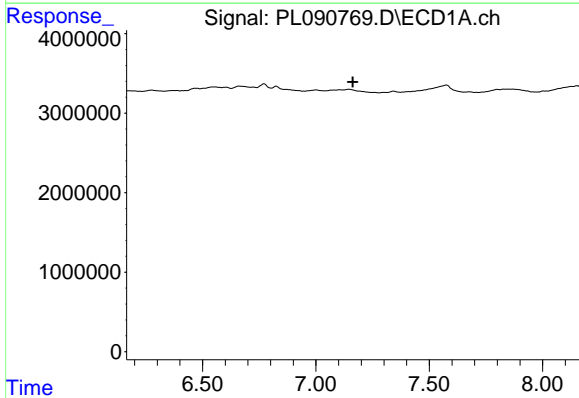
R.T.: 0.000 min
 Exp R.T.: 6.929 min
 Response: 0
 Conc: N.D.

Instrument :
 ECD_L
 ClientSampleId :



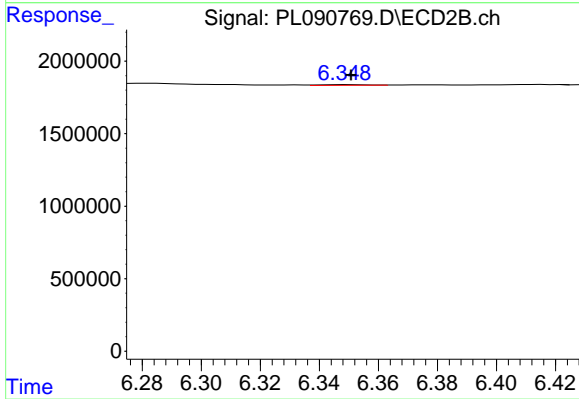
#18 Endrin aldehyde

R.T.: 6.145 min
 Delta R.T.: 0.017 min
 Response: 194177
 Conc: 0.14 ng/ml



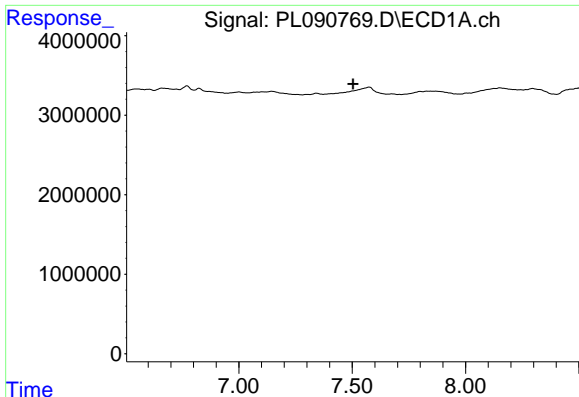
#19 Endosulfan Sulfate

R.T.: 0.000 min
 Exp R.T.: 7.163 min
 Response: 0
 Conc: N.D.



#19 Endosulfan Sulfate

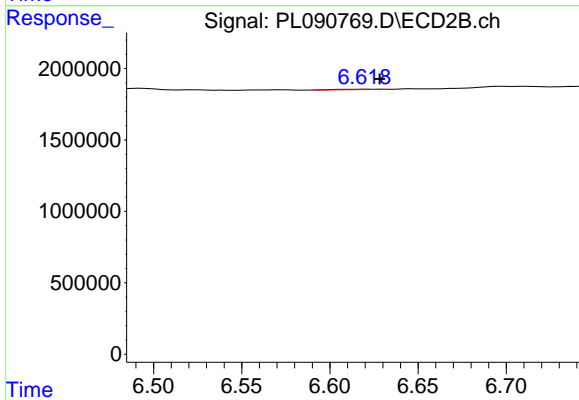
R.T.: 6.349 min
 Delta R.T.: -0.002 min
 Response: 59181
 Conc: 0.03 ng/ml



#20 Methoxychlor

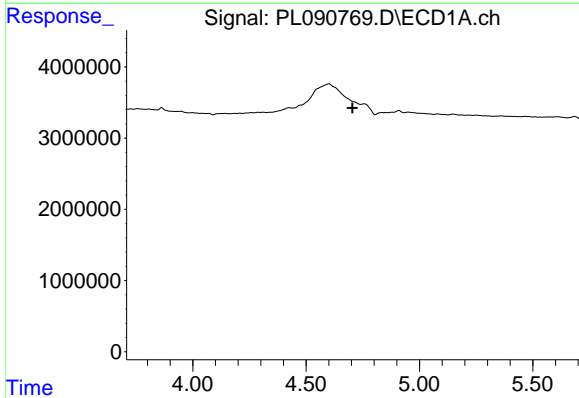
R.T.: 0.000 min
 Exp R.T. : 7.504 min
 Response: 0
 Conc: N.D.

Instrument :
 ECD_L
 ClientSampleId :



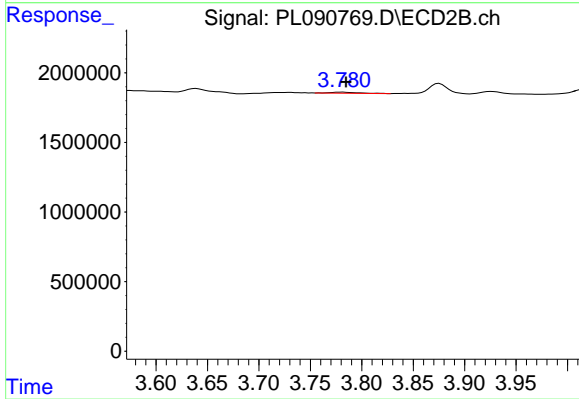
#20 Methoxychlor

R.T.: 6.619 min
 Delta R.T.: -0.009 min
 Response: 49118
 Conc: 0.05 ng/ml



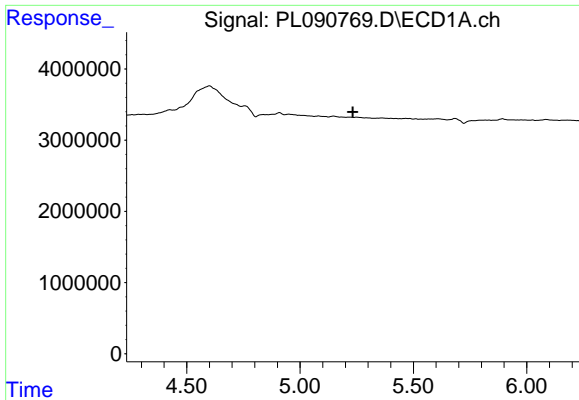
#23 Chlordane-1

R.T.: 0.000 min
 Exp R.T. : 4.705 min
 Response: 0
 Conc: N.D.



#23 Chlordane-1

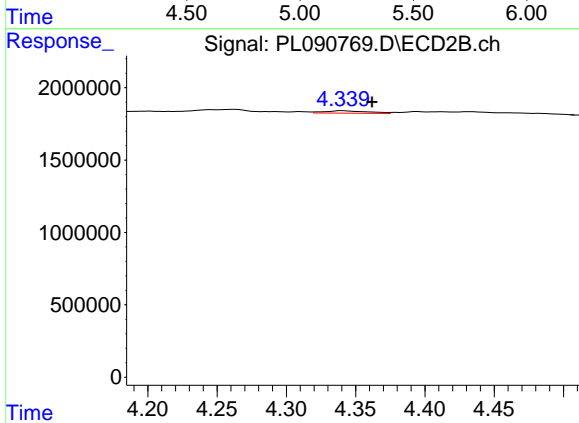
R.T.: 3.781 min
 Delta R.T.: -0.004 min
 Response: 133107
 Conc: 1.97 ng/ml



#24 Chlordane-2

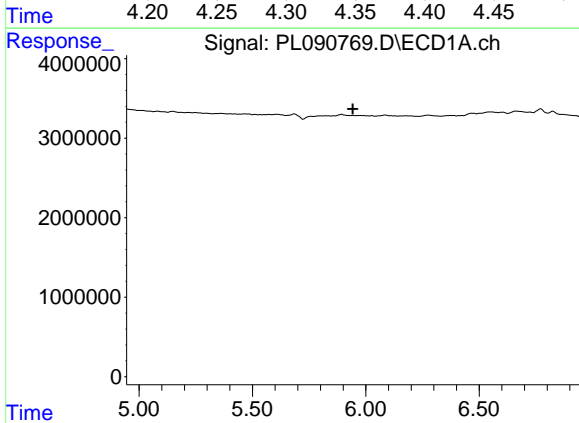
R.T.: 0.000 min
 Exp R.T. : 5.233 min
 Response: 0
 Conc: N.D.

Instrument :
 ECD_L
 ClientSampleId :



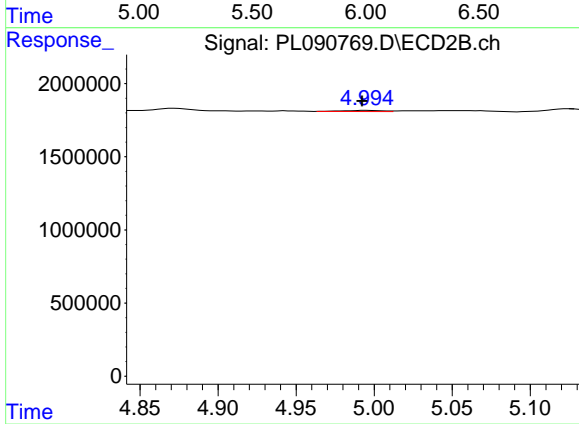
#24 Chlordane-2

R.T.: 4.340 min
 Delta R.T.: -0.021 min
 Response: 370024
 Conc: 4.45 ng/ml



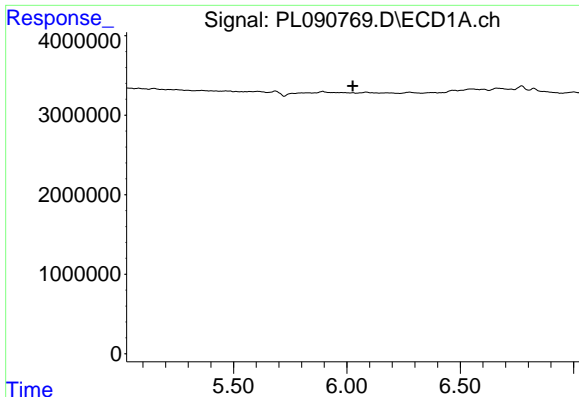
#25 Chlordane-3

R.T.: 0.000 min
 Exp R.T. : 5.943 min
 Response: 0
 Conc: N.D.



#25 Chlordane-3

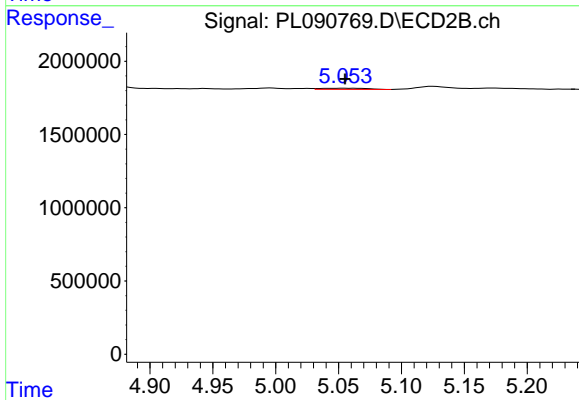
R.T.: 4.995 min
 Delta R.T.: 0.003 min
 Response: 125842
 Conc: 0.56 ng/ml



#26 Chlordane-4

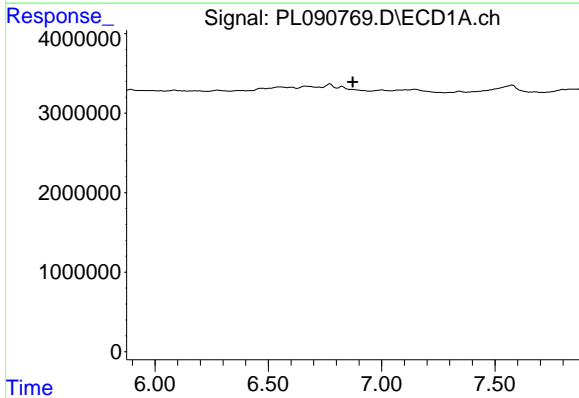
R.T.: 0.000 min
 Exp R.T. : 6.025 min
 Response: 0
 Conc: N.D.

Instrument :
 ECD_L
 ClientSampleId :



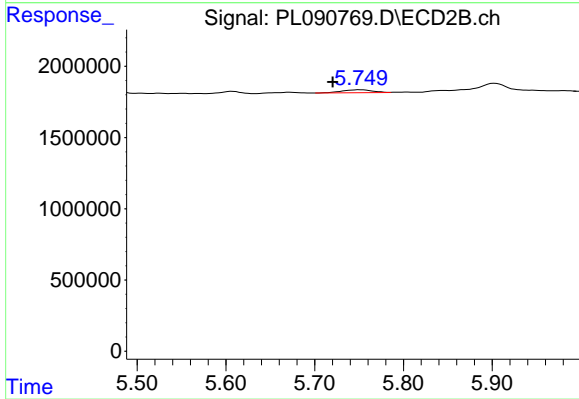
#26 Chlordane-4

R.T.: 5.054 min
 Delta R.T.: 0.000 min
 Response: 196382
 Conc: 0.92 ng/ml



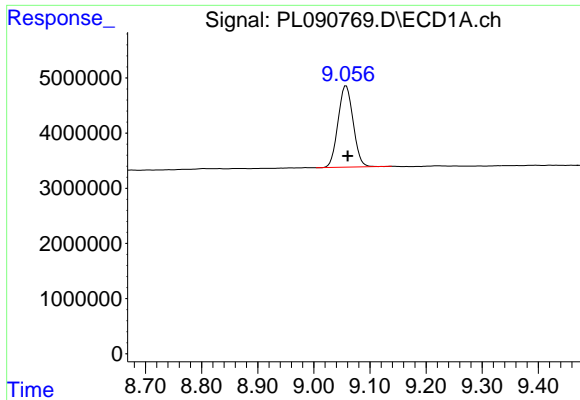
#27 Chlordane-5

R.T.: 0.000 min
 Exp R.T. : 6.873 min
 Response: 0
 Conc: N.D.



#27 Chlordane-5

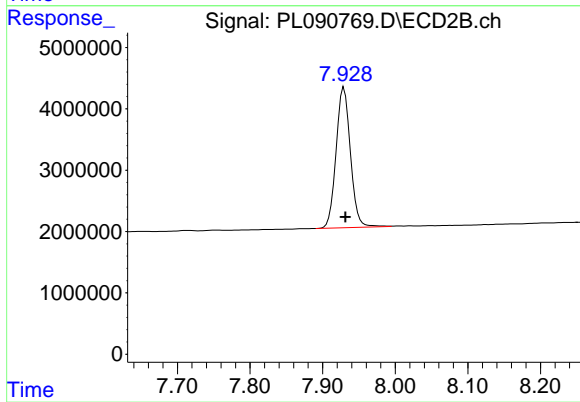
R.T.: 5.751 min
 Delta R.T.: 0.031 min
 Response: 497369
 Conc: 7.44 ng/ml



#28 Decachlorobiphenyl

R.T.: 9.058 min
Delta R.T.: -0.003 min
Response: 27575197
Conc: 19.19 ng/ml

Instrument :
ECD_L
ClientSampleId :



#28 Decachlorobiphenyl

R.T.: 7.929 min
Delta R.T.: -0.002 min
Response: 31347151
Conc: 18.78 ng/ml