

Data Path : Z:\pestpcbsrv\HPCHEM1\ECD\_L\Data\PL080524\  
 Data File : PL090783.D  
 Signal(s) : Signal #1: ECD1A.ch Signal #2: ECD2B.ch  
 Acq On : 05 Aug 2024 17:39  
 Operator : AR\AJ  
 Sample : PTOXICC750  
 Misc :  
 ALS Vial : 16 Sample Multiplier: 1

**Instrument :**  
 ECD\_L  
**ClientSampleId :**  
 PTOXICC750

Integration File signal 1: autoint1.e  
 Integration File signal 2: autoint2.e  
 Quant Time: Aug 05 18:47:44 2024  
 Quant Method : Z:\pestpcbsrv\HPCHEM1\ECD\_L\methods\LTX080524.M  
 Quant Title : GC Extractables  
 QLast Update : Mon Aug 05 18:44:59 2024  
 Response via : Initial Calibration  
 Integrator: ChemStation

Volume Inj. : 2 µl  
 Signal #1 Phase : Rtx-CLPesticide 1 Signal #2 Phase: Rtx-CLPesticide 1  
 Signal #1 Info : 30M x 0.32mm x0.3 Signal #2 Info : 30M x 0.32mm x 0.25µm

Compound	RT#1	RT#2	Resp#1	Resp#2	ng/ml	ng/ml
-----						
System Monitoring Compounds						
1) SA Tetrachlo...	3.544	2.786	139.5E6	132.5E6	75.159	75.177
7) SA Decachlor...	9.053	7.926	97662684	118.4E6	72.253	72.834
Target Compounds						
2) Toxaphene-1	5.854	5.341	6699702	8863479	740.461	744.049
3) Toxaphene-2	6.443	5.700	8342390	9512312	744.002	737.158
4) Toxaphene-3	7.059	6.614	44699270	32605778	741.716	747.054
5) Toxaphene-4	7.150	6.743	33081393	45587864	742.236	745.668
6) Toxaphene-5	7.934	7.186	25199488	14536630	746.920	744.912
-----						

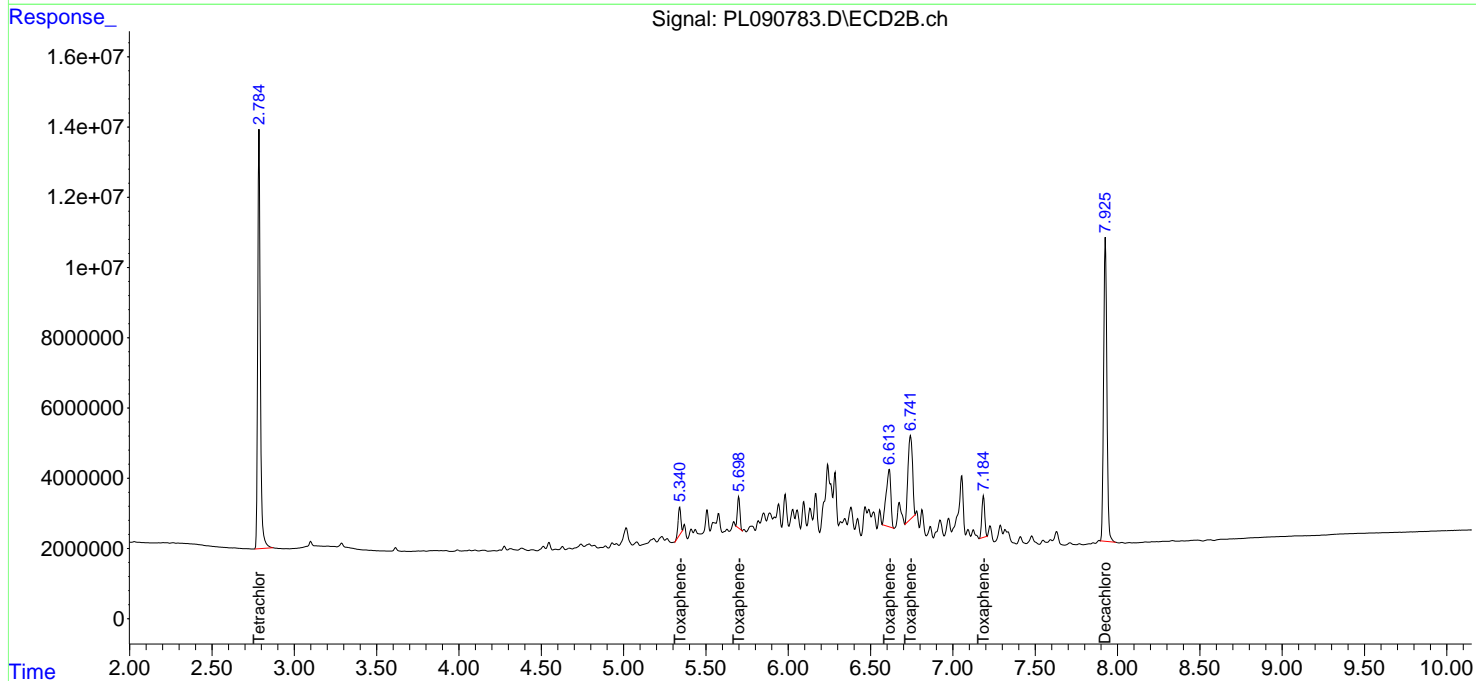
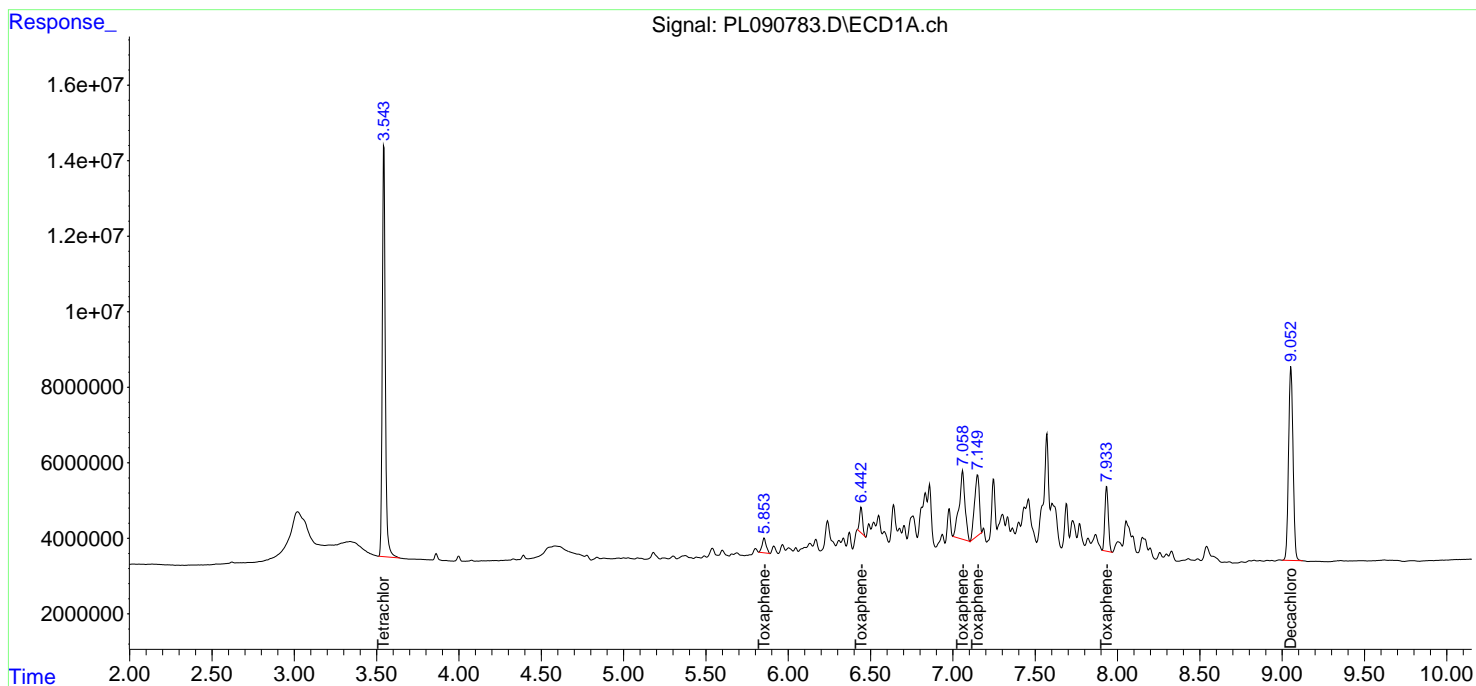
(f)=RT Delta > 1/2 Window (#)=Amounts differ by > 25% (m)=manual int.

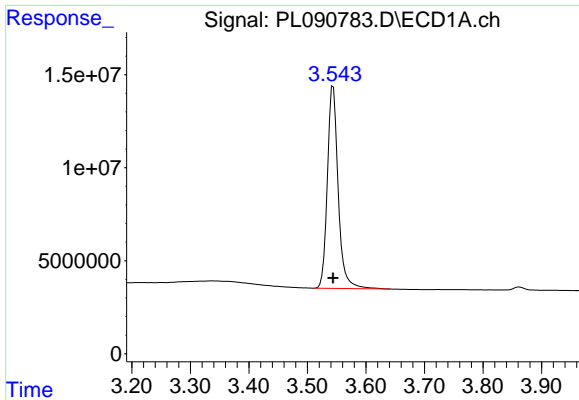
Data Path : Z:\pestpcbsrv\HPCHEM1\ECD\_L\Data\PL080524\  
 Data File : PL090783.D  
 Signal(s) : Signal #1: ECD1A.ch Signal #2: ECD2B.ch  
 Acq On : 05 Aug 2024 17:39  
 Operator : AR\AJ  
 Sample : PTOXICC750  
 Misc :  
 ALS Vial : 16 Sample Multiplier: 1

Instrument :  
 ECD\_L  
 ClientSampleId :  
 PTOXICC750

Integration File signal 1: autoint1.e  
 Integration File signal 2: autoint2.e  
 Quant Time: Aug 05 18:47:44 2024  
 Quant Method : Z:\pestpcbsrv\HPCHEM1\ECD\_L\methods\LTX080524.M  
 Quant Title : GC Extractables  
 QLast Update : Mon Aug 05 18:44:59 2024  
 Response via : Initial Calibration  
 Integrator: ChemStation

Volume Inj. : 2 µl  
 Signal #1 Phase : Rtx-CLPesticide 1 Signal #2 Phase: Rtx-CLPesticide 1  
 Signal #1 Info : 30M x 0.32mm x0.3 Signal #2 Info : 30M x 0.32mm x 0.25µm

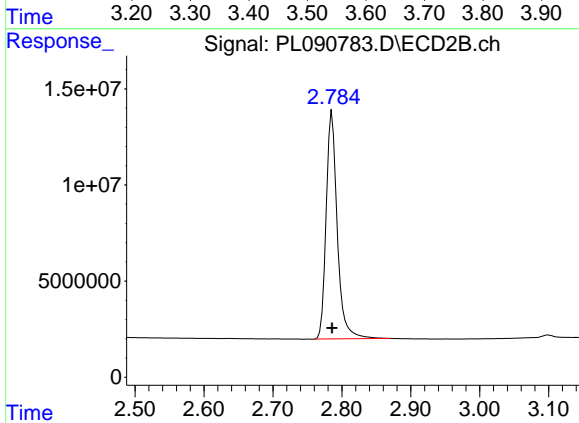




#1 Tetrachloro-m-xylene

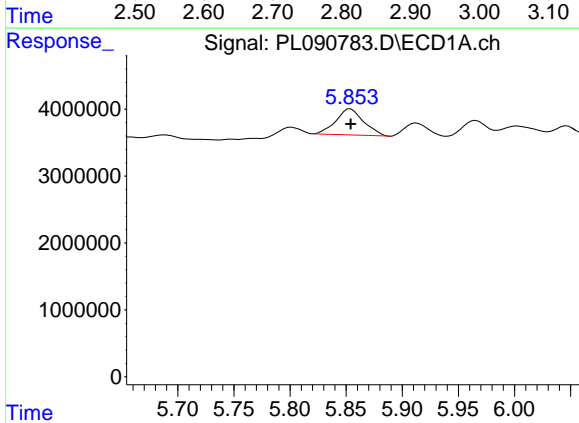
R.T.: 3.544 min  
 Delta R.T.: 0.000 min  
 Response: 139460521  
 Conc: 75.16 ng/ml

Instrument :  
 ECD\_L  
 ClientSampleId :  
 PTOXICC750



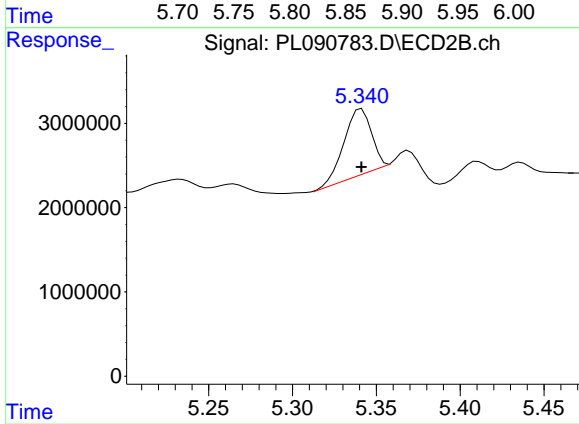
#1 Tetrachloro-m-xylene

R.T.: 2.786 min  
 Delta R.T.: 0.000 min  
 Response: 132514693  
 Conc: 75.18 ng/ml



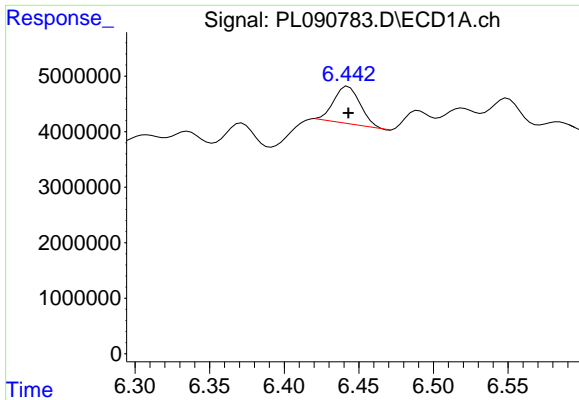
#2 Toxaphene-1

R.T.: 5.854 min  
 Delta R.T.: 0.000 min  
 Response: 6699702  
 Conc: 740.46 ng/ml



#2 Toxaphene-1

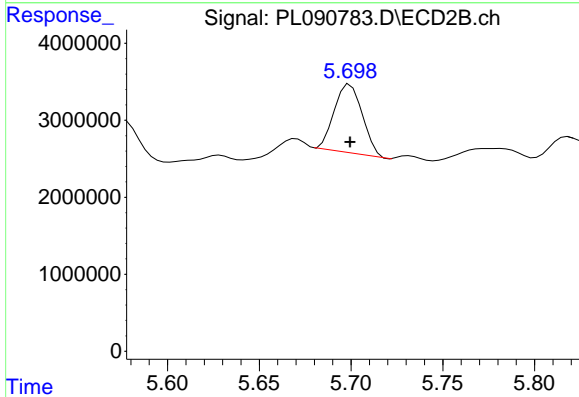
R.T.: 5.341 min  
 Delta R.T.: 0.000 min  
 Response: 8863479  
 Conc: 744.05 ng/ml



#3 Toxaphene-2

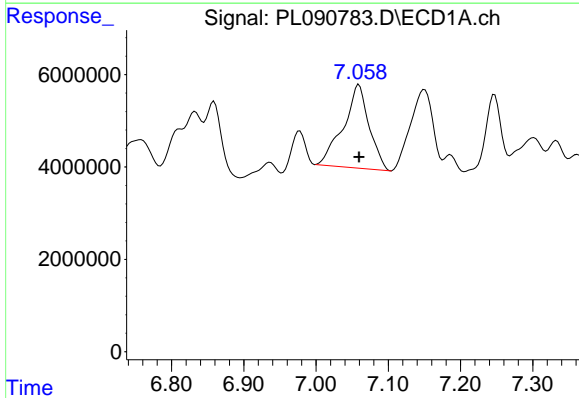
R.T.: 6.443 min  
 Delta R.T.: 0.000 min  
 Response: 8342390  
 Conc: 744.00 ng/ml

Instrument :  
 ECD\_L  
 ClientSampleId :  
 PTOXICC750



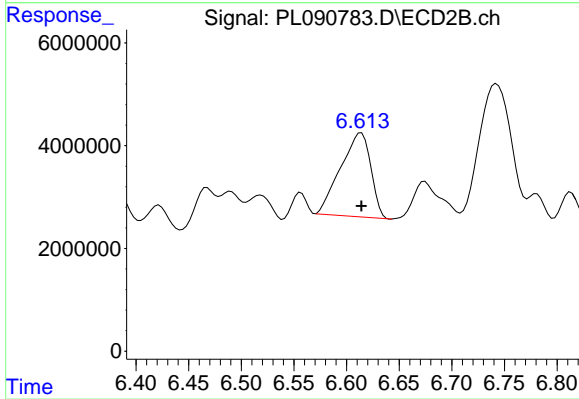
#3 Toxaphene-2

R.T.: 5.700 min  
 Delta R.T.: 0.000 min  
 Response: 9512312  
 Conc: 737.16 ng/ml



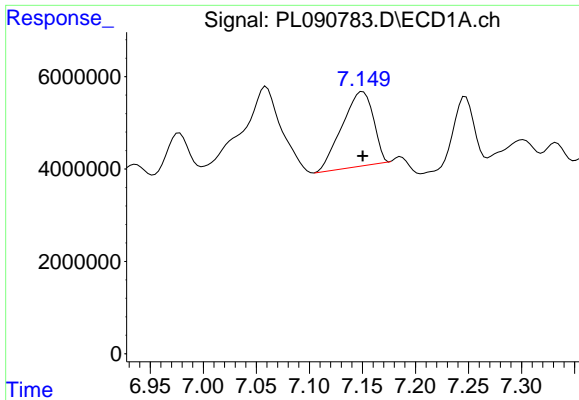
#4 Toxaphene-3

R.T.: 7.059 min  
 Delta R.T.: 0.000 min  
 Response: 44699270  
 Conc: 741.72 ng/ml



#4 Toxaphene-3

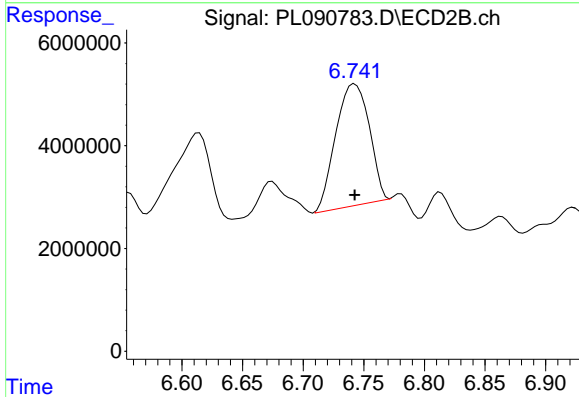
R.T.: 6.614 min  
 Delta R.T.: 0.000 min  
 Response: 32605778  
 Conc: 747.05 ng/ml



#5 Toxaphene-4

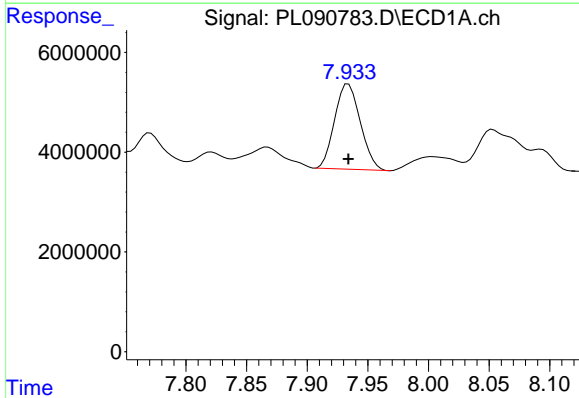
R.T.: 7.150 min  
 Delta R.T.: 0.000 min  
 Response: 33081393  
 Conc: 742.24 ng/ml

Instrument :  
 ECD\_L  
 ClientSampleId :  
 PTOXICC750



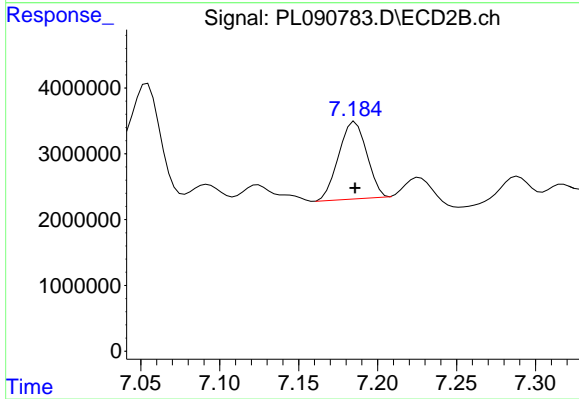
#5 Toxaphene-4

R.T.: 6.743 min  
 Delta R.T.: 0.000 min  
 Response: 45587864  
 Conc: 745.67 ng/ml



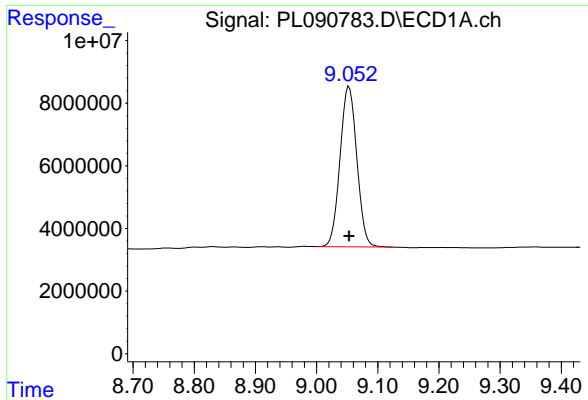
#6 Toxaphene-5

R.T.: 7.934 min  
 Delta R.T.: 0.000 min  
 Response: 25199488  
 Conc: 746.92 ng/ml



#6 Toxaphene-5

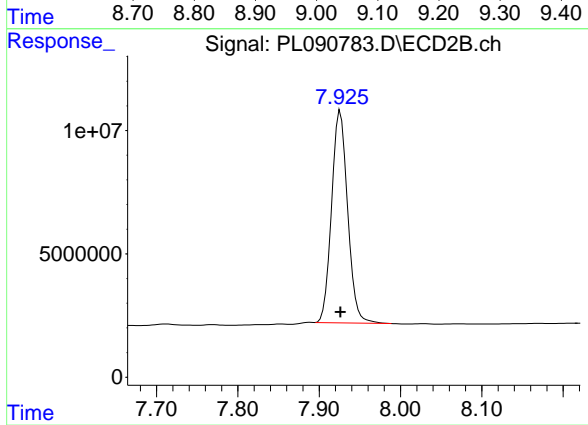
R.T.: 7.186 min  
 Delta R.T.: 0.000 min  
 Response: 14536630  
 Conc: 744.91 ng/ml



#7 Decachlorobiphenyl

R.T.: 9.053 min  
 Delta R.T.: 0.000 min  
 Response: 97662684  
 Conc: 72.25 ng/ml

Instrument :  
 ECD\_L  
 ClientSampleId :  
 PTOXICC750



#7 Decachlorobiphenyl

R.T.: 7.926 min  
 Delta R.T.: 0.000 min  
 Response: 118402080  
 Conc: 72.83 ng/ml