

Data Path : Z:\pestpcbsrv\HPCHEM1\ECD_L\Data\PL080619\
 Data File : PL051115.D
 Signal(s) : Signal #1: ECD1A.ch Signal #2: ECD2B.ch
 Acq On : 06 Aug 2019 18:19
 Operator : SM\AJ
 Sample : K4162-04MS
 Misc :
 ALS Vial : 26 Sample Multiplier: 1

Instrument :
 ECD_L
Client Sampled :
 RBR-200050MS

Manual Integrations
APPROVED
 Ankita
 8/7/2019 5:45:01 PM

Integration File signal 1: autoint1.e
 Integration File signal 2: autoint2.e
 Quant Time: Aug 07 00:44:08 2019
 Quant Method : Z:\pestpcbsrv\HPCHEM1\ECD_L\methods\PL071719.M
 Quant Title : GC Extractables
 QLast Update : Fri Jul 19 01:19:13 2019
 Response via : Initial Calibration
 Integrator: ChemStation

Volume Inj. : 1 µl
 Signal #1 Phase : ZB-MR2 Signal #2 Phase: ZB-MR1
 Signal #1 Info : 30M x 0.32mm x0.2 Signal #2 Info : 30M x 0.32mm x0.5µm

Compound	RT#1	RT#2	Resp#1	Resp#2	ng/ml	ng/ml

System Monitoring Compounds						
1) SA Tetrachlo...	3.318	3.928	239.3E6	68315256	23.816	23.943
28) SA Decachlor...	7.979	8.958	216.5E6	59470754	21.380	21.030
Target Compounds						
2) A alpha-BHC	3.745	4.317	1146.9E6	303.3E6	68.439	73.512
3) MA gamma-BHC...	4.021	4.600	1078.5E6	281.1E6	70.119	72.570
4) MA Heptachlor	4.305	5.101	1131.0E6	286.0E6	68.928	68.965
5) MB Aldrin	4.543	5.403	1046.9E6	262.9E6	67.578	69.754
6) B beta-BHC	4.276	4.776	462.4E6	126.9E6	70.536	73.425
7) B delta-BHC	4.468	4.990	1056.4E6	238.6E6	64.381	61.683
8) B Heptachlo...	4.979	5.790	1005.4E6	251.5E6	68.057	65.756
9) A Endosulfan I	5.309	6.144	948.3E6	239.5E6	65.204	69.633
10) B gamma-Chl...	5.201	6.024	1063.2E6	251.9E6	67.361	68.165
11) B alpha-Chl...	5.257	6.095	1013.2E6	252.8E6	66.410	68.975
12) B 4,4'-DDE	5.424	6.256	966.8E6	246.3E6	64.513	68.352
13) MA Dieldrin	5.548	6.401	1040.3E6	253.0E6	67.130	71.457
14) MA Endrin	5.801	6.618	983.3E6	217.7E6	66.798	70.179
15) B Endosulfa...	6.076	6.831	877.3E6	220.3E6	62.688	69.283
16) A 4,4'-DDD	5.935	6.746	776.8E6	188.1E6	64.819	70.643
17) MA 4,4'-DDT	6.169	7.043	770.4E6	183.3E6	62.199	67.885
18) B Endrin al...	6.242	6.953	660.9E6	166.5E6	57.285	61.260m
19) B Endosulfa...	6.454	7.178	758.2E6	192.8E6	59.515	66.767
20) A Methoxychlor	6.714	7.504	377.8E6	97455289	60.558	66.420
21) B Endrin ke...	6.935	7.646	856.6E6	209.3E6	62.626	72.375
22) Mirex	7.108	8.094	527.0E6	135.9E6	53.756	59.183

(f)=RT Delta > 1/2 Window (#)=Amounts differ by > 25% (m)=manual int.

Data Path : Z:\pestpcbsrv\HPCHEM1\ECD_L\Data\PL080619\
 Data File : PL051115.D
 Signal(s) : Signal #1: ECD1A.ch Signal #2: ECD2B.ch
 Acq On : 06 Aug 2019 18:19
 Operator : SM\AJ
 Sample : K4162-04MS
 Misc :
 ALS Vial : 26 Sample Multiplier: 1

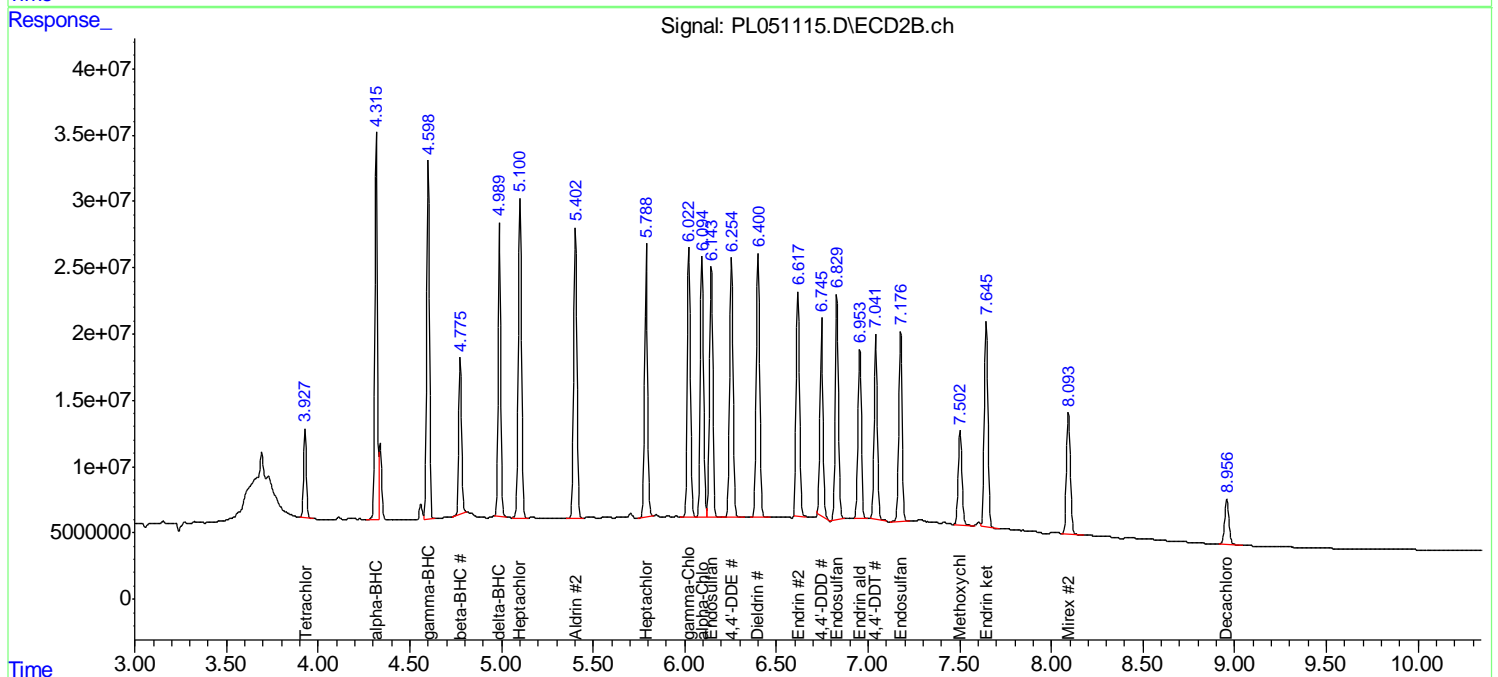
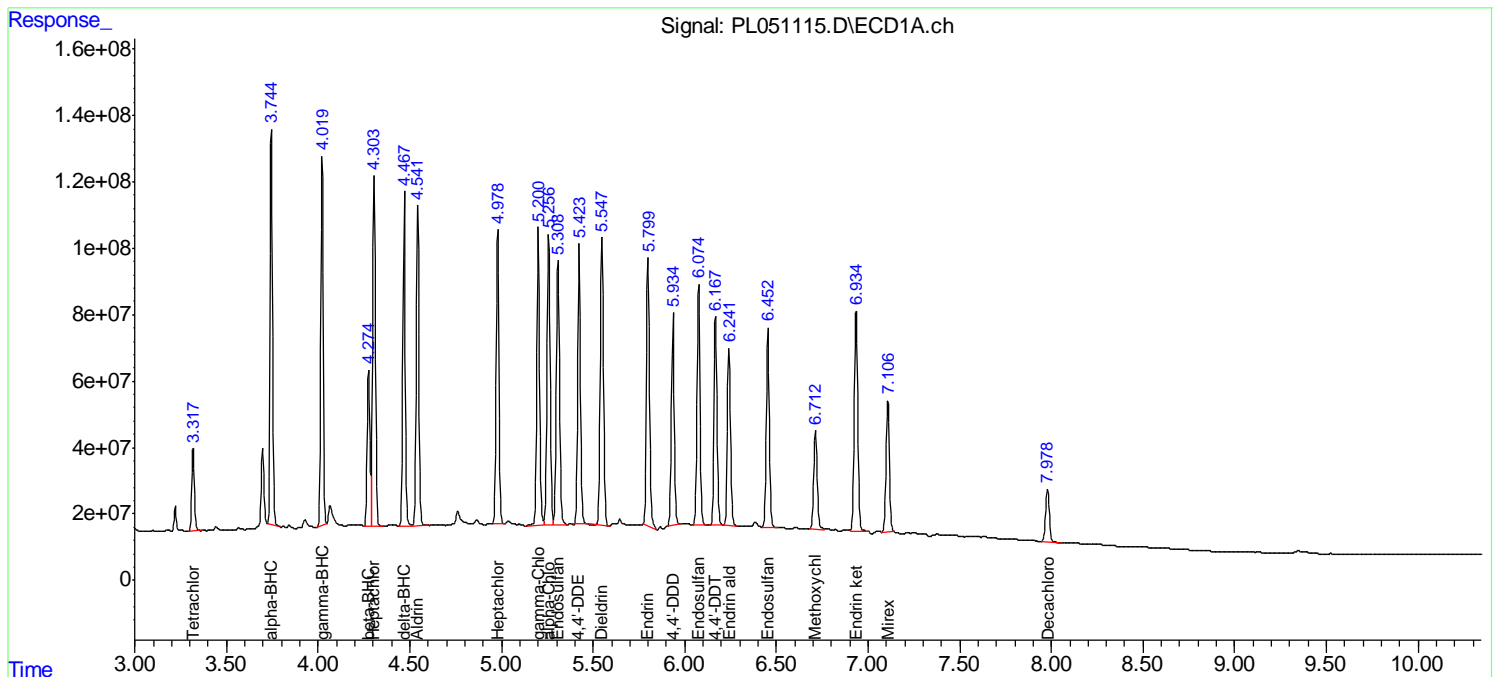
Instrument :
 ECD_L
 Client Sampled :
 RBR-200050MS

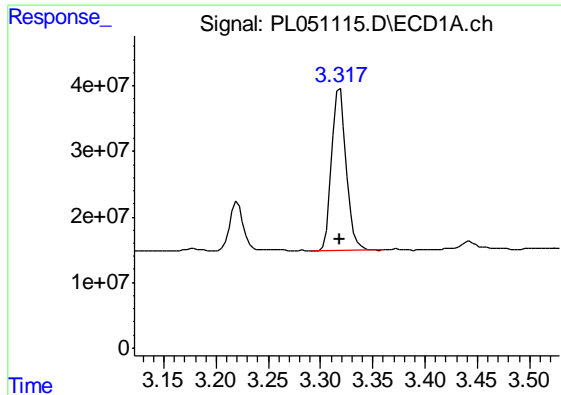
Manual Integrations
 APPROVED

Ankita
 8/7/2019 5:45:01 PM

Integration File signal 1: autoint1.e
 Integration File signal 2: autoint2.e
 Quant Time: Aug 07 00:44:08 2019
 Quant Method : Z:\pestpcbsrv\HPCHEM1\ECD_L\methods\PL071719.M
 Quant Title : GC Extractables
 QLast Update : Fri Jul 19 01:19:13 2019
 Response via : Initial Calibration
 Integrator: ChemStation

Volume Inj. : 1 µl
 Signal #1 Phase : ZB-MR2 Signal #2 Phase: ZB-MR1
 Signal #1 Info : 30M x 0.32mm x0.2 Signal #2 Info : 30M x 0.32mm x0.5µm

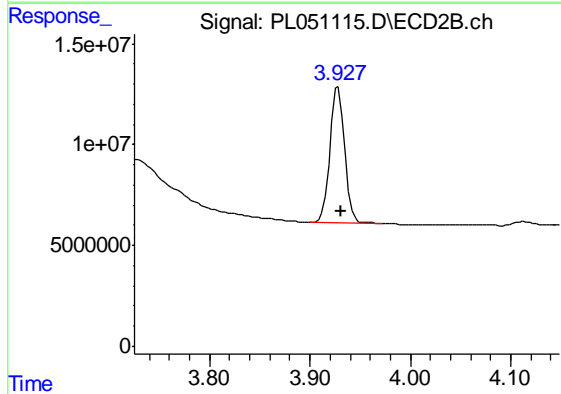




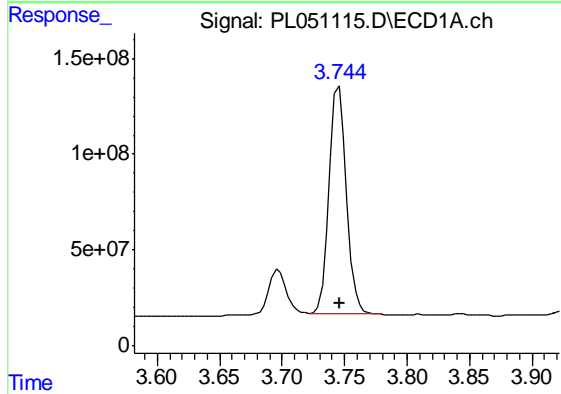
#1 Tetrachloro-m-xylene
 R.T.: 3.318 min
 Delta R.T.: 0.000 min
 Response: 239298318
 Conc: 23.82 ng/ml

Instrument :
 ECD_L
 ClientSampleId :
 RBR-200050MS

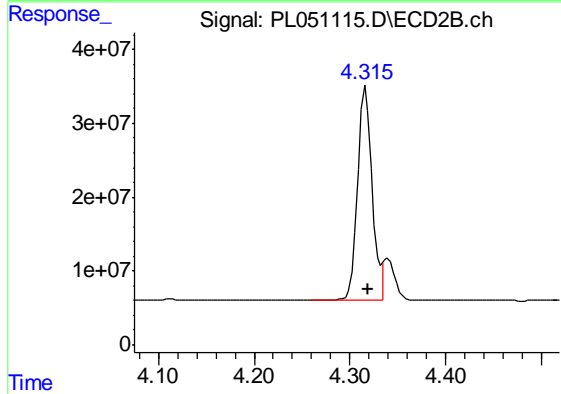
Manual Integrations
 APPROVED
 Ankita
 8/7/2019 5:45:01 PM



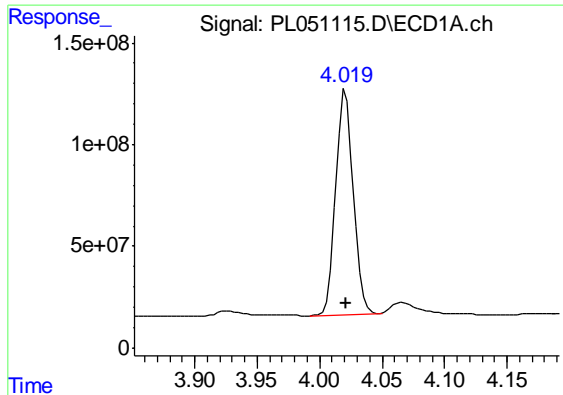
#1 Tetrachloro-m-xylene
 R.T.: 3.928 min
 Delta R.T.: -0.002 min
 Response: 68315256
 Conc: 23.94 ng/ml



#2 alpha-BHC
 R.T.: 3.745 min
 Delta R.T.: 0.000 min
 Response: 1146879969
 Conc: 68.44 ng/ml



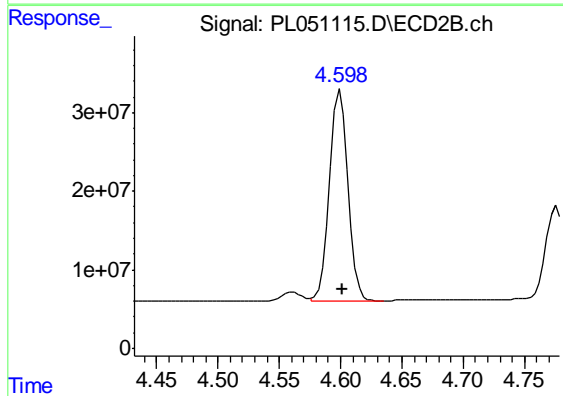
#2 alpha-BHC
 R.T.: 4.317 min
 Delta R.T.: -0.002 min
 Response: 303310102
 Conc: 73.51 ng/ml



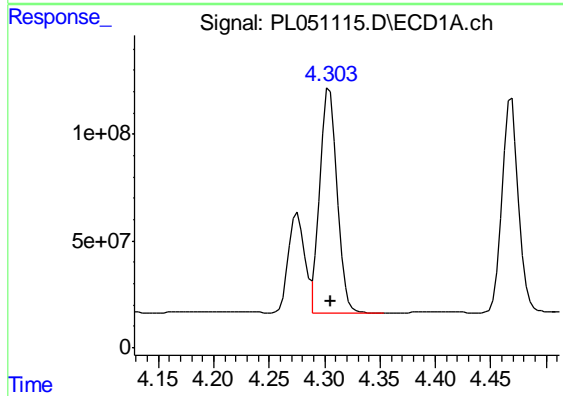
#3 gamma-BHC (Lindane)
 R.T.: 4.021 min
 Delta R.T.: 0.000 min
 Response: 1078541925
 Conc: 70.12 ng/ml

Instrument :
 ECD_L
ClientSampled :
 RBR-200050MS

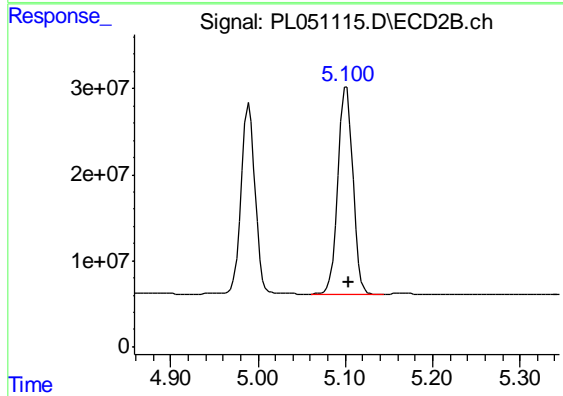
Manual Integrations
APPROVED
 Ankita
 8/7/2019 5:45:01 PM



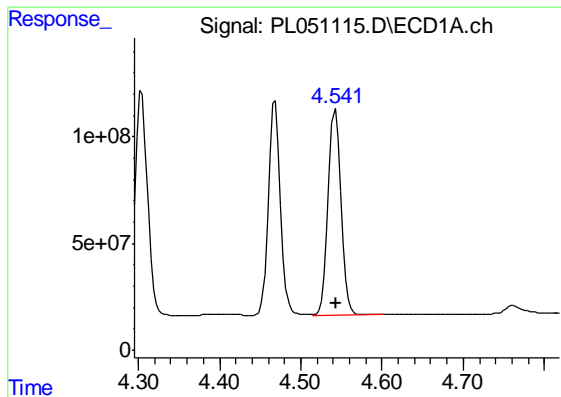
#3 gamma-BHC (Lindane)
 R.T.: 4.600 min
 Delta R.T.: -0.002 min
 Response: 281077960
 Conc: 72.57 ng/ml



#4 Heptachlor
 R.T.: 4.305 min
 Delta R.T.: 0.000 min
 Response: 1130965513
 Conc: 68.93 ng/ml



#4 Heptachlor
 R.T.: 5.101 min
 Delta R.T.: -0.002 min
 Response: 285977499
 Conc: 68.97 ng/ml



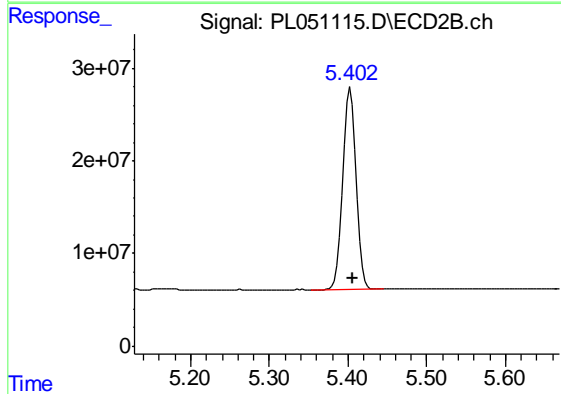
#5 Aldrin

R.T.: 4.543 min
 Delta R.T.: 0.000 min
 Response: 1046889339
 Conc: 67.58 ng/ml

Instrument :
 ECD_L
 ClientSampled :
 RBR-200050MS

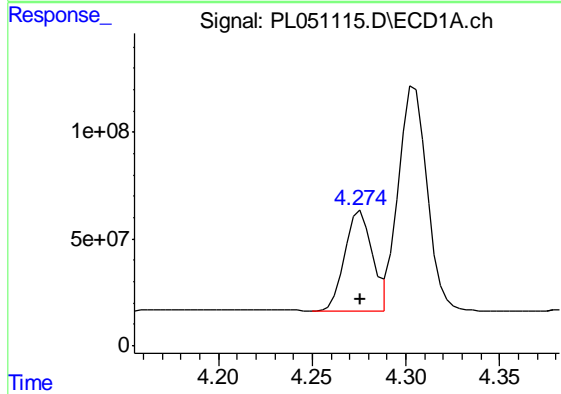
Manual Integrations
 APPROVED

Ankita
 8/7/2019 5:45:01 PM



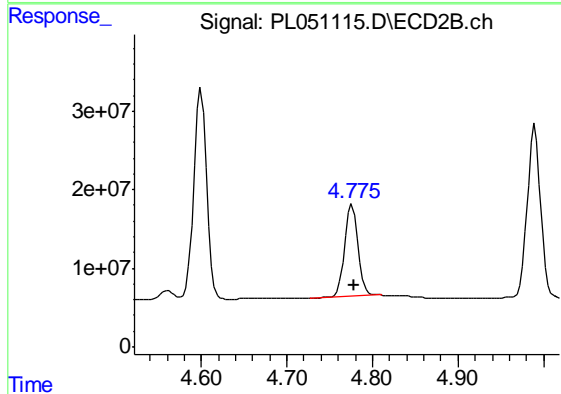
#5 Aldrin

R.T.: 5.403 min
 Delta R.T.: -0.002 min
 Response: 262855241
 Conc: 69.75 ng/ml



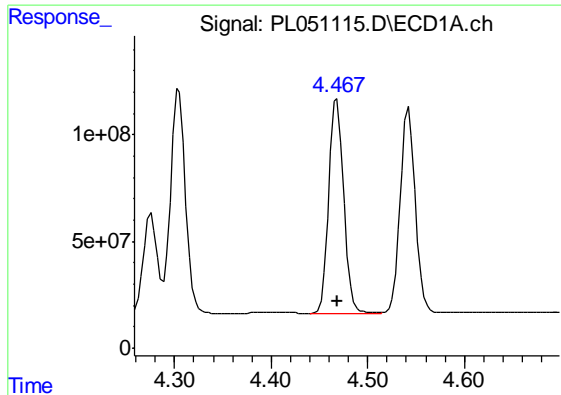
#6 beta-BHC

R.T.: 4.276 min
 Delta R.T.: 0.000 min
 Response: 462425351
 Conc: 70.54 ng/ml



#6 beta-BHC

R.T.: 4.776 min
 Delta R.T.: -0.002 min
 Response: 126940559
 Conc: 73.42 ng/ml



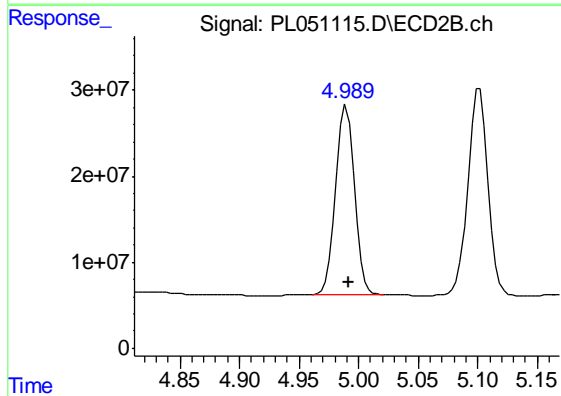
#7 delta-BHC

R.T.: 4.468 min
 Delta R.T.: 0.000 min
 Response: 1056404229
 Conc: 64.38 ng/ml

Instrument :
 ECD_L
 ClientSampled :
 RBR-200050MS

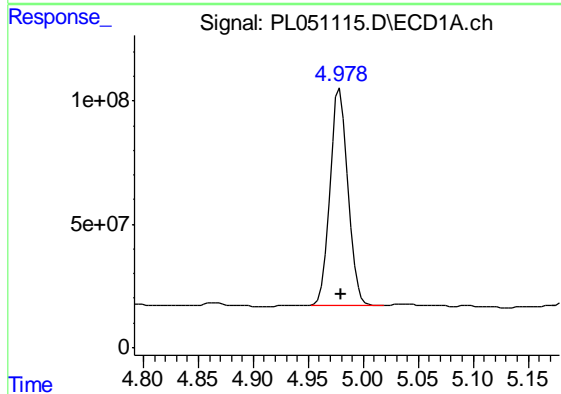
Manual Integrations
 APPROVED

Ankita
 8/7/2019 5:45:01 PM



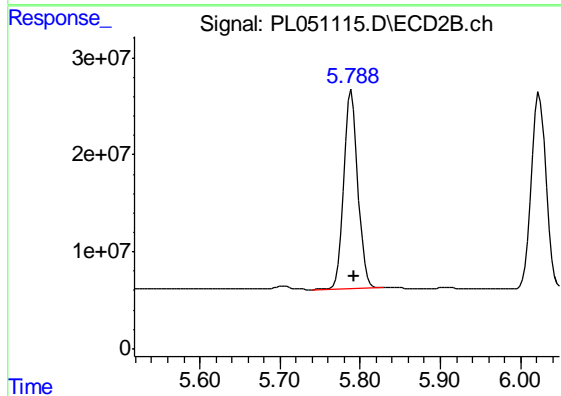
#7 delta-BHC

R.T.: 4.990 min
 Delta R.T.: -0.002 min
 Response: 238566167
 Conc: 61.68 ng/ml



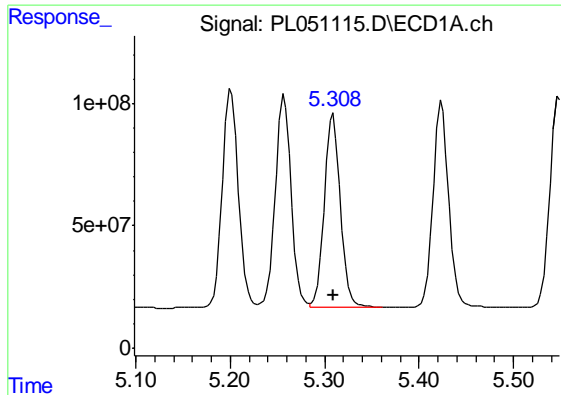
#8 Heptachlor epoxide

R.T.: 4.979 min
 Delta R.T.: 0.000 min
 Response: 1005446644
 Conc: 68.06 ng/ml



#8 Heptachlor epoxide

R.T.: 5.790 min
 Delta R.T.: -0.003 min
 Response: 251505674
 Conc: 65.76 ng/ml



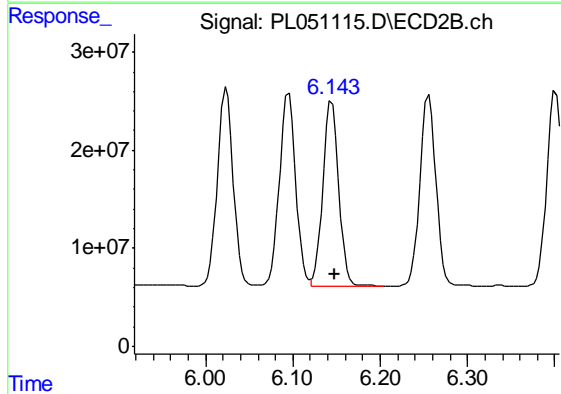
#9 Endosulfan I

R.T.: 5.309 min
 Delta R.T.: 0.000 min
 Response: 948324881
 Conc: 65.20 ng/ml

Instrument :
 ECD_L
 ClientSampled :
 RBR-200050MS

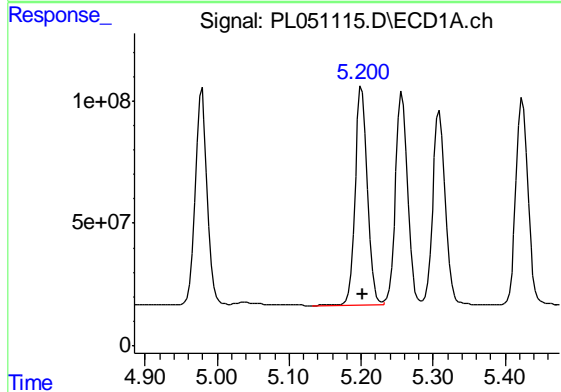
Manual Integrations
 APPROVED

Ankita
 8/7/2019 5:45:01 PM



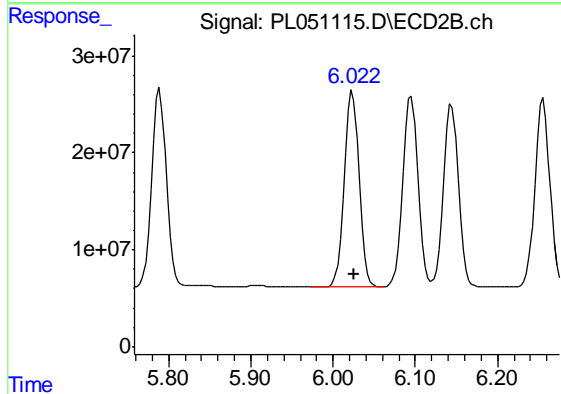
#9 Endosulfan I

R.T.: 6.144 min
 Delta R.T.: -0.003 min
 Response: 239459231
 Conc: 69.63 ng/ml



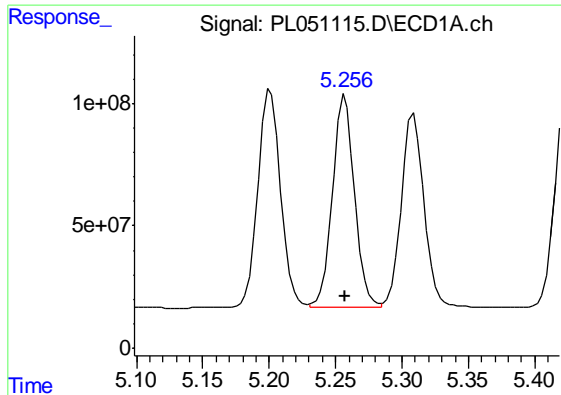
#10 gamma-Chlordane

R.T.: 5.201 min
 Delta R.T.: 0.000 min
 Response: 1063175352
 Conc: 67.36 ng/ml



#10 gamma-Chlordane

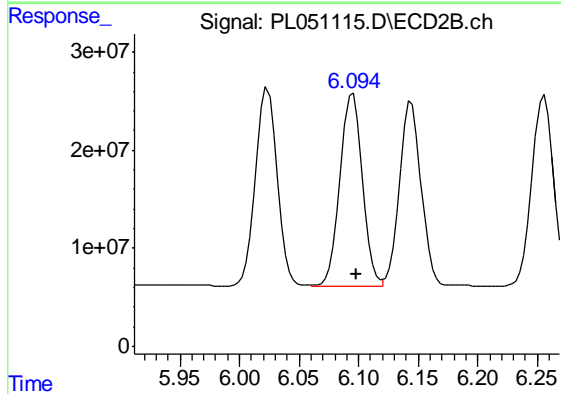
R.T.: 6.024 min
 Delta R.T.: -0.002 min
 Response: 251889620
 Conc: 68.17 ng/ml



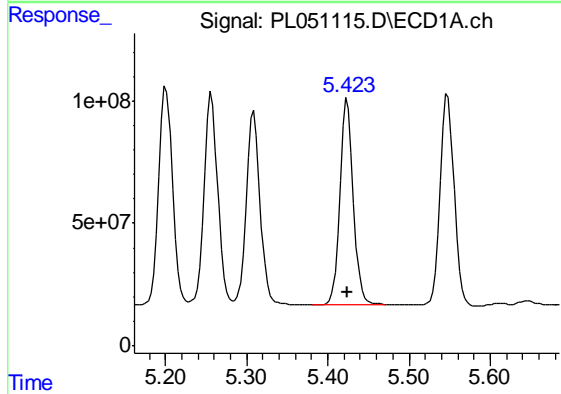
#11 alpha-Chlordane
 R.T.: 5.257 min
 Delta R.T.: 0.000 min
 Response: 1013151500
 Conc: 66.41 ng/ml

Instrument :
 ECD_L
 ClientSampled :
 RBR-200050MS

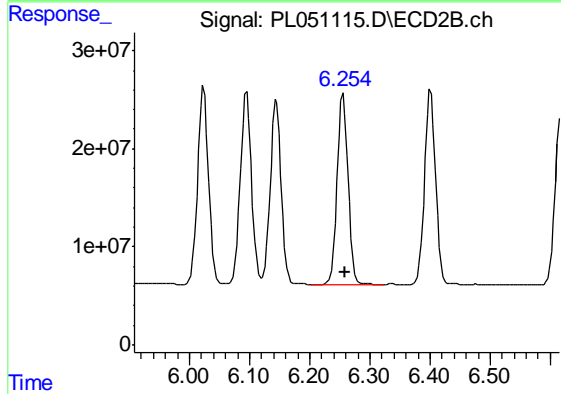
Manual Integrations
 APPROVED
 Ankita
 8/7/2019 5:45:01 PM



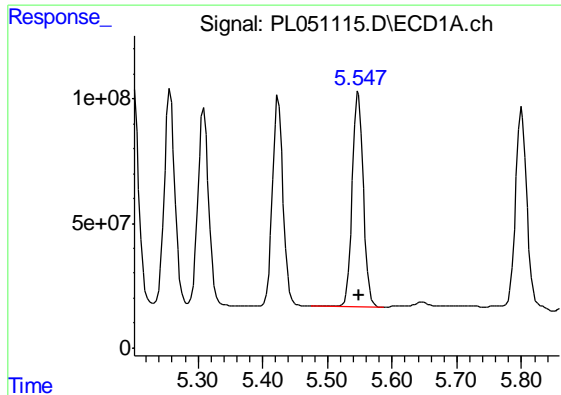
#11 alpha-Chlordane
 R.T.: 6.095 min
 Delta R.T.: -0.003 min
 Response: 252803247
 Conc: 68.97 ng/ml



#12 4,4'-DDE
 R.T.: 5.424 min
 Delta R.T.: 0.000 min
 Response: 966783791
 Conc: 64.51 ng/ml



#12 4,4'-DDE
 R.T.: 6.256 min
 Delta R.T.: -0.002 min
 Response: 246297568
 Conc: 68.35 ng/ml



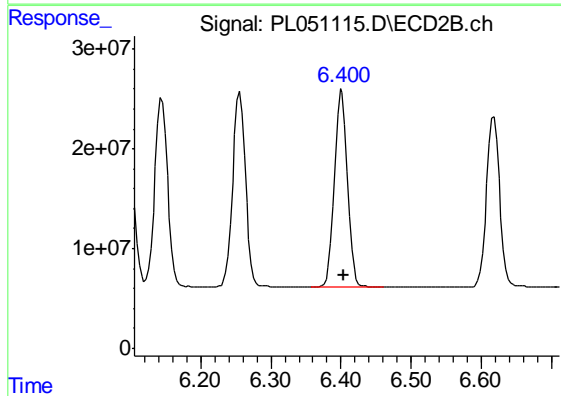
#13 Dieldrin

R.T.: 5.548 min
 Delta R.T.: 0.000 min
 Response: 1040300464
 Conc: 67.13 ng/ml

Instrument :
 ECD_L
 ClientSampled :
 RBR-200050MS

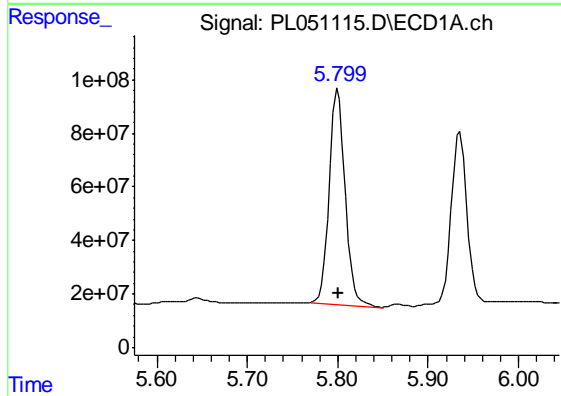
Manual Integrations
 APPROVED

Ankita
 8/7/2019 5:45:01 PM



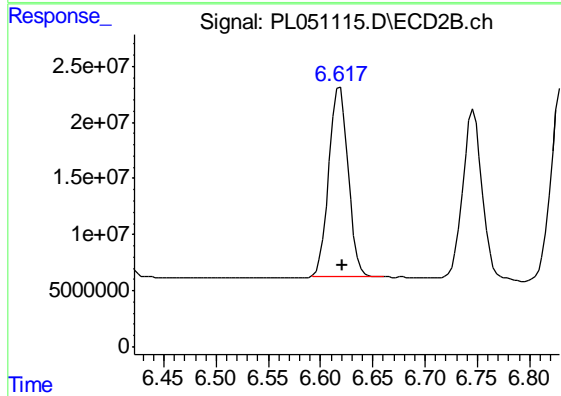
#13 Dieldrin

R.T.: 6.401 min
 Delta R.T.: -0.003 min
 Response: 253039946
 Conc: 71.46 ng/ml



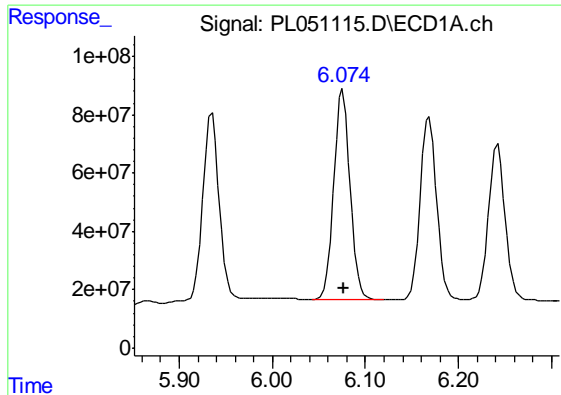
#14 Endrin

R.T.: 5.801 min
 Delta R.T.: 0.000 min
 Response: 983293364
 Conc: 66.80 ng/ml



#14 Endrin

R.T.: 6.618 min
 Delta R.T.: -0.003 min
 Response: 217656970
 Conc: 70.18 ng/ml



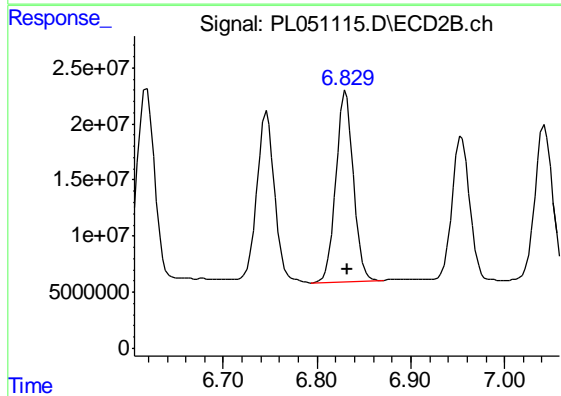
#15 Endosulfan II

R.T.: 6.076 min
 Delta R.T.: 0.000 min
 Response: 877306177
 Conc: 62.69 ng/ml

Instrument :
 ECD_L
 ClientSampled :
 RBR-200050MS

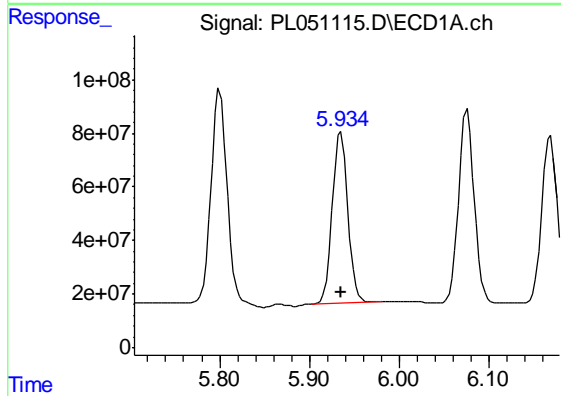
Manual Integrations
 APPROVED

Ankita
 8/7/2019 5:45:01 PM



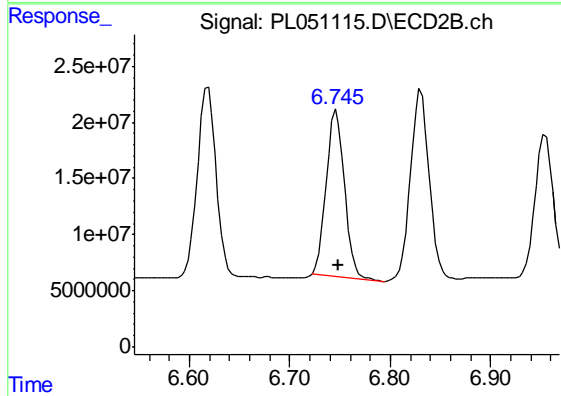
#15 Endosulfan II

R.T.: 6.831 min
 Delta R.T.: -0.002 min
 Response: 220261845
 Conc: 69.28 ng/ml



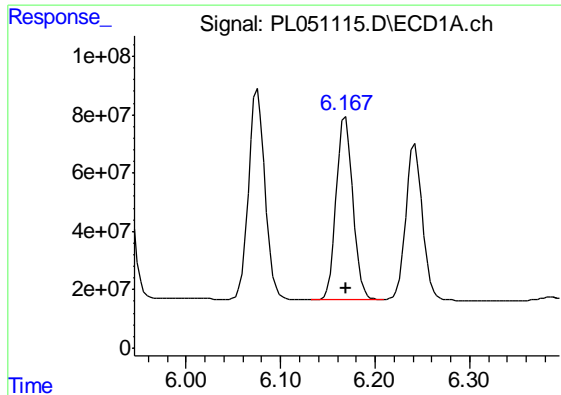
#16 4,4'-DDD

R.T.: 5.935 min
 Delta R.T.: 0.000 min
 Response: 776773983
 Conc: 64.82 ng/ml



#16 4,4'-DDD

R.T.: 6.746 min
 Delta R.T.: -0.002 min
 Response: 188114317
 Conc: 70.64 ng/ml



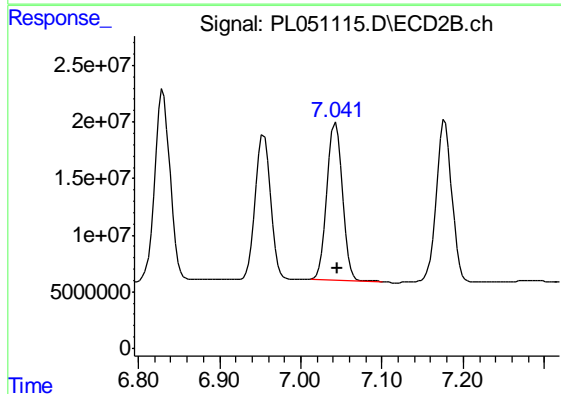
#17 4,4'-DDT

R.T.: 6.169 min
 Delta R.T.: 0.000 min
 Response: 770382745
 Conc: 62.20 ng/ml

Instrument :
 ECD_L
 ClientSampled :
 RBR-200050MS

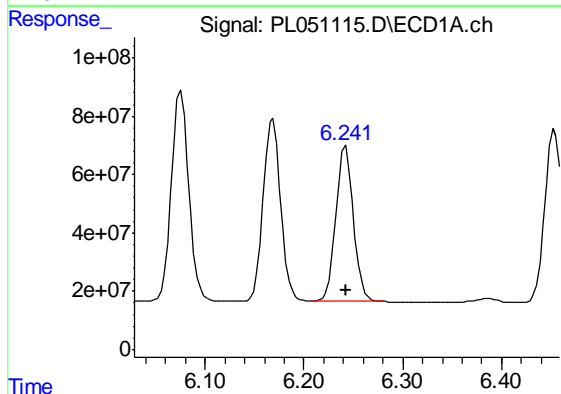
Manual Integrations
 APPROVED

Ankita
 8/7/2019 5:45:01 PM



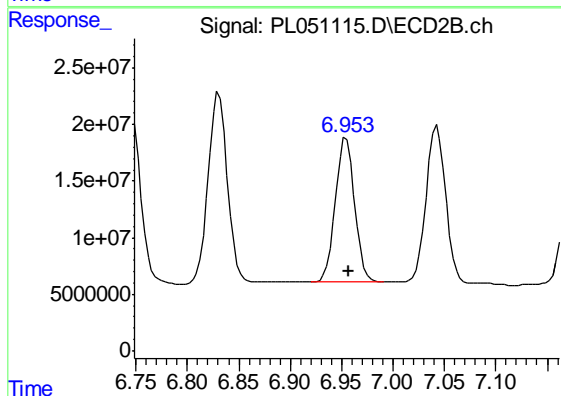
#17 4,4'-DDT

R.T.: 7.043 min
 Delta R.T.: -0.003 min
 Response: 183262499
 Conc: 67.89 ng/ml



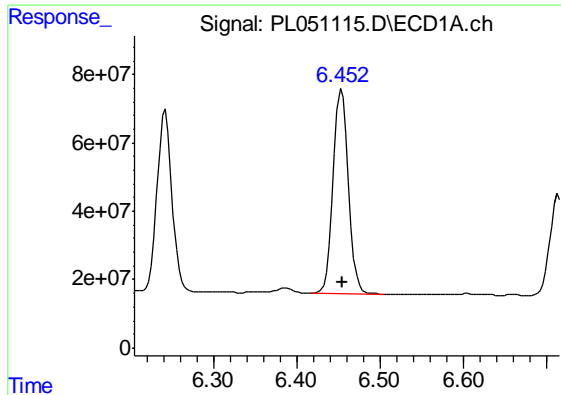
#18 Endrin aldehyde

R.T.: 6.242 min
 Delta R.T.: 0.000 min
 Response: 660863118
 Conc: 57.29 ng/ml



#18 Endrin aldehyde

R.T.: 6.953 min
 Delta R.T.: -0.004 min
 Response: 166480568
 Conc: 61.26 ng/ml m



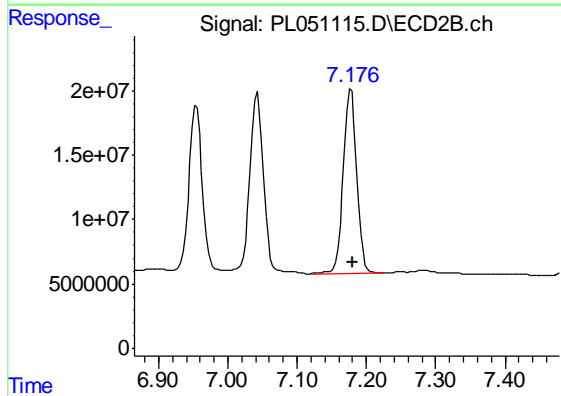
#19 Endosulfan Sulfate

R.T.: 6.454 min
 Delta R.T.: 0.000 min
 Response: 758193765
 Conc: 59.51 ng/ml

Instrument :
 ECD_L
 ClientSampled :
 RBR-200050MS

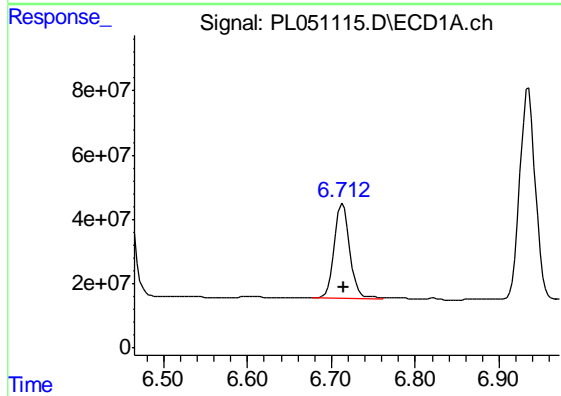
Manual Integrations
 APPROVED

Ankita
 8/7/2019 5:45:01 PM



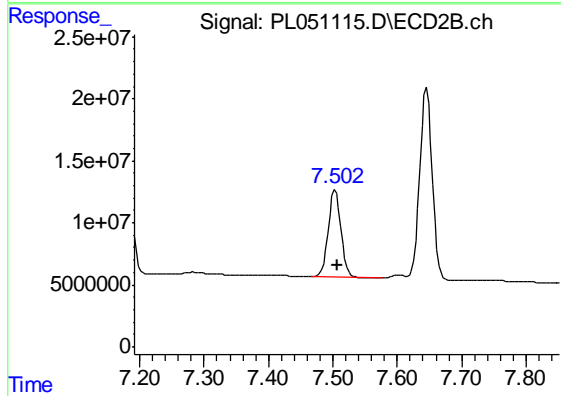
#19 Endosulfan Sulfate

R.T.: 7.178 min
 Delta R.T.: -0.002 min
 Response: 192840582
 Conc: 66.77 ng/ml



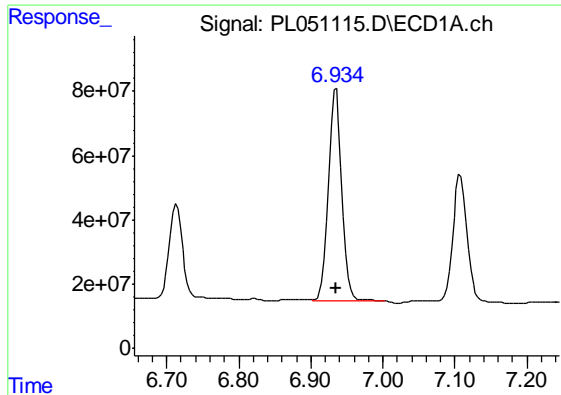
#20 Methoxychlor

R.T.: 6.714 min
 Delta R.T.: 0.000 min
 Response: 377817465
 Conc: 60.56 ng/ml



#20 Methoxychlor

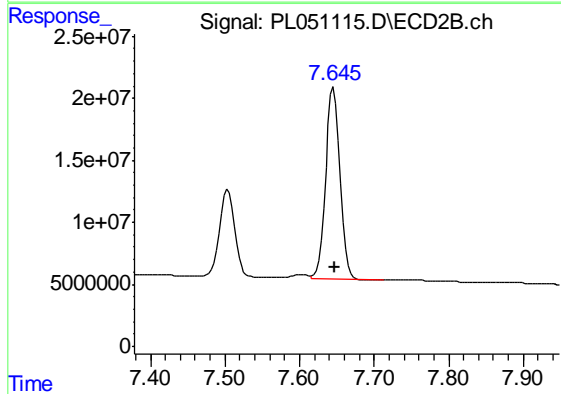
R.T.: 7.504 min
 Delta R.T.: -0.003 min
 Response: 97455289
 Conc: 66.42 ng/ml



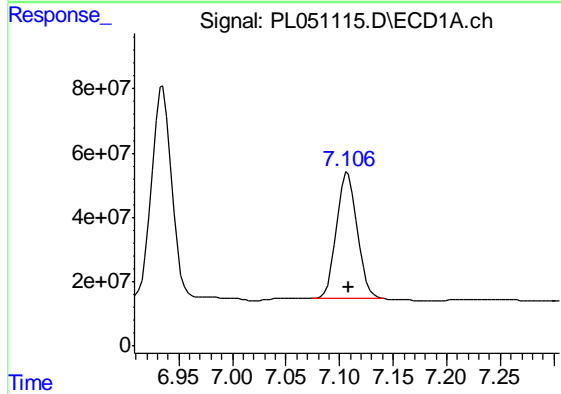
#21 Endrin ketone
 R.T.: 6.935 min
 Delta R.T.: 0.000 min
 Response: 856562448
 Conc: 62.63 ng/ml

Instrument :
 ECD_L
 ClientSampled :
 RBR-200050MS

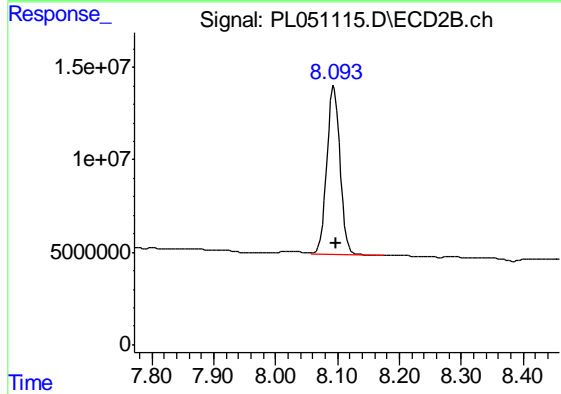
Manual Integrations
 APPROVED
 Ankita
 8/7/2019 5:45:01 PM



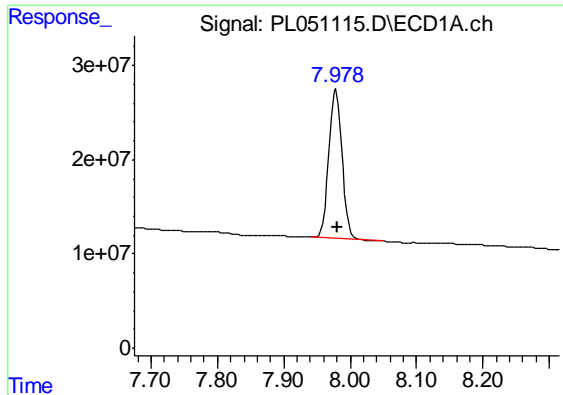
#21 Endrin ketone
 R.T.: 7.646 min
 Delta R.T.: -0.002 min
 Response: 209256123
 Conc: 72.37 ng/ml



#22 Mirex
 R.T.: 7.108 min
 Delta R.T.: -0.001 min
 Response: 527043227
 Conc: 53.76 ng/ml



#22 Mirex
 R.T.: 8.094 min
 Delta R.T.: -0.003 min
 Response: 135943679
 Conc: 59.18 ng/ml



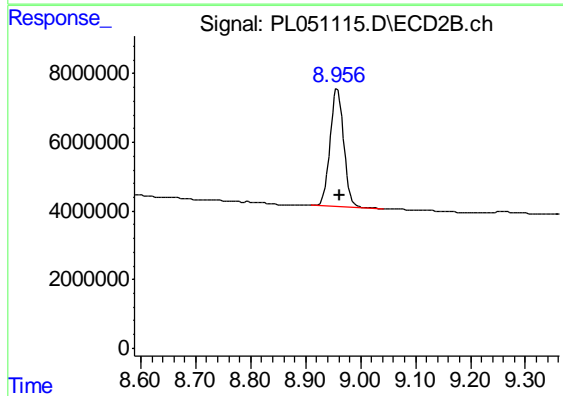
#28 Decachlorobiphenyl

R.T.: 7.979 min
Delta R.T.: -0.002 min
Response: 216477059
Conc: 21.38 ng/ml

Instrument :
ECD_L
ClientSampleId :
RBR-200050MS

Manual Integrations
APPROVED

Ankita
8/7/2019 5:45:01 PM



#28 Decachlorobiphenyl

R.T.: 8.958 min
Delta R.T.: -0.004 min
Response: 59470754
Conc: 21.03 ng/ml