

Data Path : Z:\pestpcbsrv\HPCHEM1\ECD_L\Data\PL080620\
 Data File : PL060513.D
 Signal(s) : Signal #1: ECD1A.ch Signal #2: ECD2B.ch
 Acq On : 06 Aug 2020 08:47
 Operator : DD\AJ
 Sample : L3537-02
 Misc :
 ALS Vial : 19 Sample Multiplier: 1

Instrument :
 ECD_L
 ClientSampleId :
 JTY1-WC-S-0203

Integration File signal 1: autoint1.e
 Integration File signal 2: autoint2.e
 Quant Time: Aug 06 11:18:31 2020
 Quant Method : Z:\pestpcbsrv\HPCHEM1\ECD_L\methods\PL073020.M
 Quant Title : GC Extractables
 QLast Update : Thu Jul 30 04:13:43 2020
 Response via : Initial Calibration
 Integrator: ChemStation

Volume Inj. : 1 µl
 Signal #1 Phase : ZB-MR2 Signal #2 Phase: ZB-MR1
 Signal #1 Info : 30M x 0.32mm x0.2 Signal #2 Info : 30M x 0.32mm x0.5µm

Compound	RT#1	RT#2	Resp#1	Resp#2	ng/ml	ng/ml
----------	------	------	--------	--------	-------	-------

 System Monitoring Compounds

1) SA Tetrachlo...	3.464	4.011	34155548	56071292	17.137	21.437 #
28) SA Decachlor...	8.219	9.098	32047311	40985636	21.000	22.787

Target Compounds

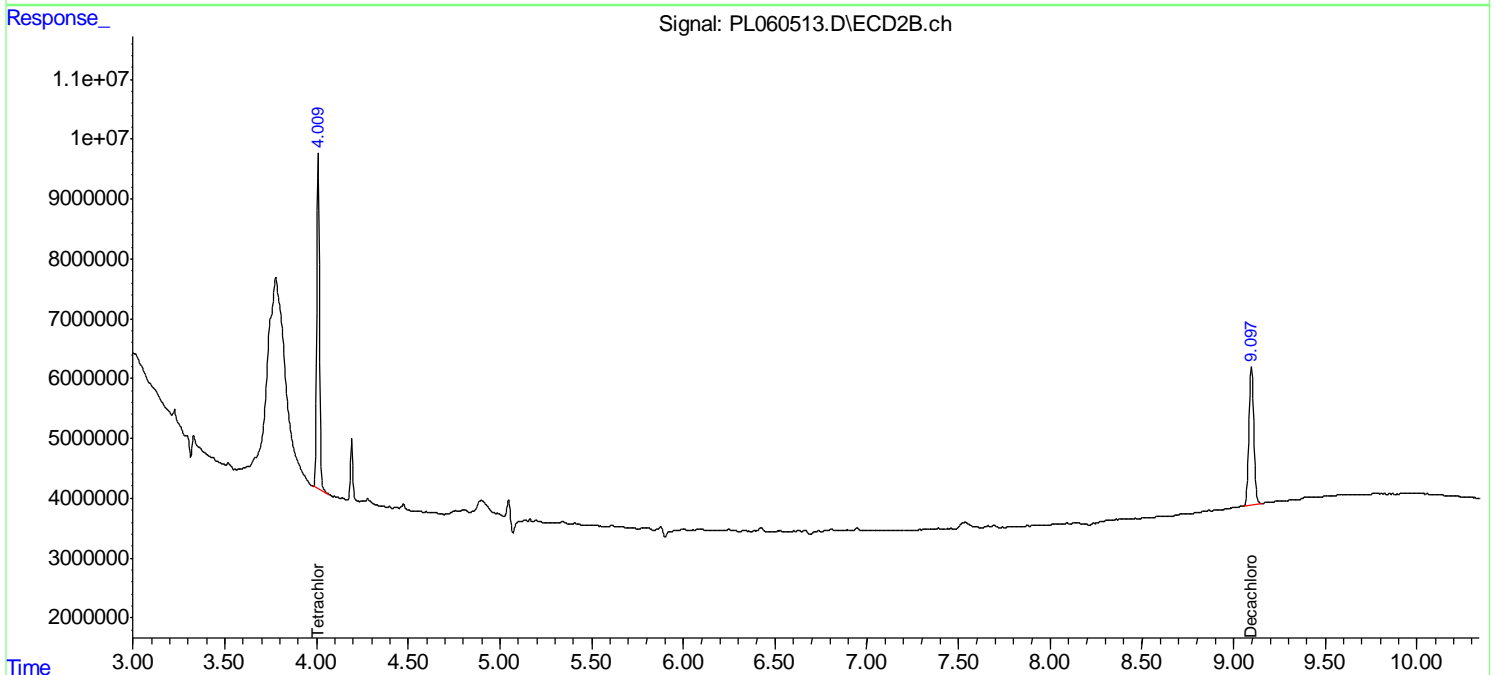
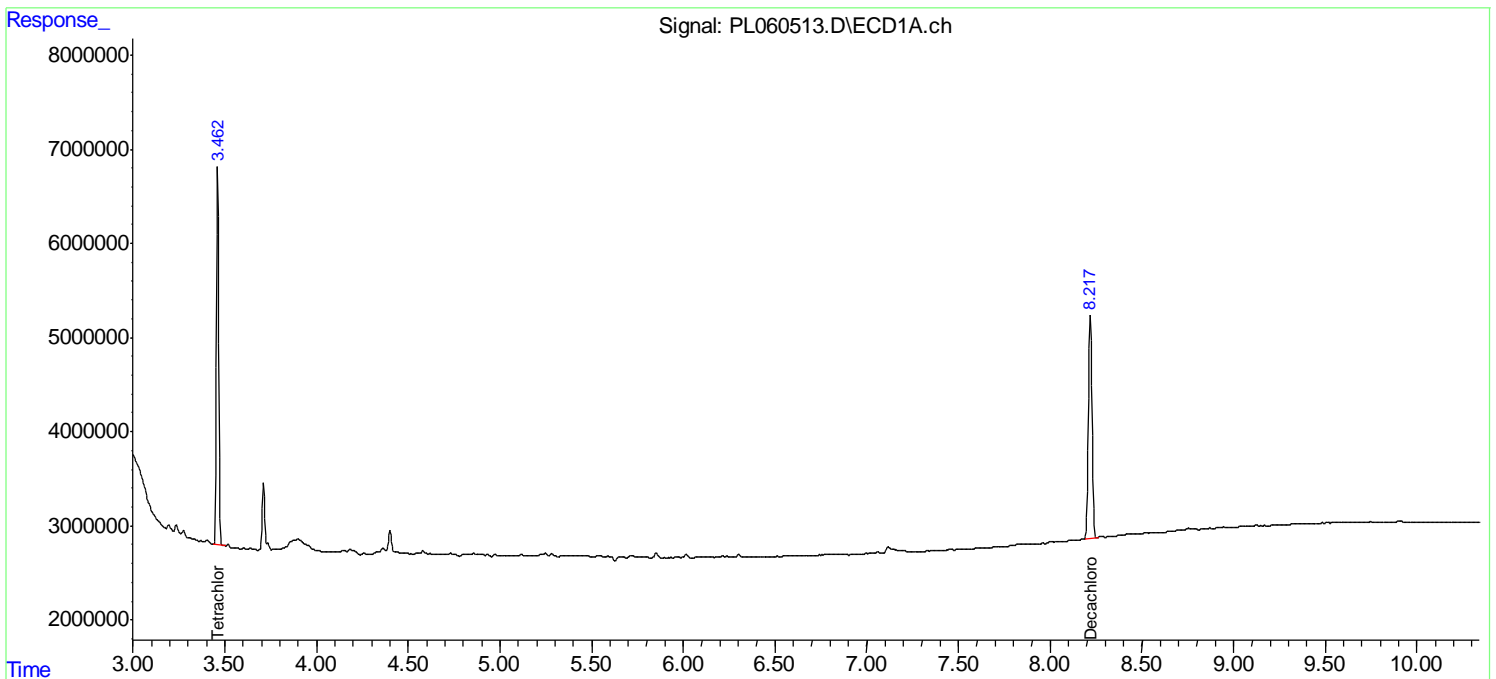
(f)=RT Delta > 1/2 Window (#)=Amounts differ by > 25% (m)=manual int.

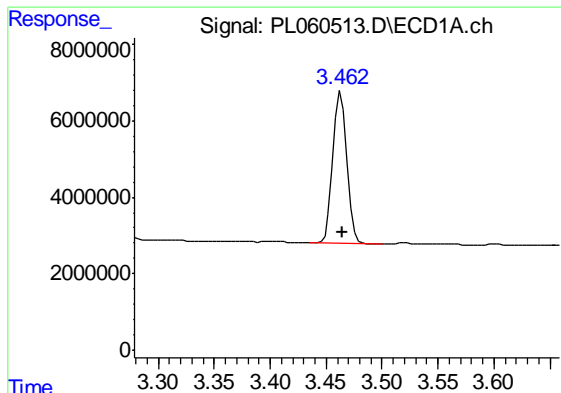
Data Path : Z:\pestpcbsrv\HPCHEM1\ECD_L\Data\PL080620\
 Data File : PL060513.D
 Signal(s) : Signal #1: ECD1A.ch Signal #2: ECD2B.ch
 Acq On : 06 Aug 2020 08:47
 Operator : DD\AJ
 Sample : L3537-02
 Misc :
 ALS Vial : 19 Sample Multiplier: 1

Instrument :
 ECD_L
 ClientSampleId :
 JTY1-WC-S-0203

Integration File signal 1: autoint1.e
 Integration File signal 2: autoint2.e
 Quant Time: Aug 06 11:18:31 2020
 Quant Method : Z:\pestpcbsrv\HPCHEM1\ECD_L\methods\PL073020.M
 Quant Title : GC Extractables
 QLast Update : Thu Jul 30 04:13:43 2020
 Response via : Initial Calibration
 Integrator: ChemStation

Volume Inj. : 1 µl
 Signal #1 Phase : ZB-MR2 Signal #2 Phase: ZB-MR1
 Signal #1 Info : 30M x 0.32mm x0.2 Signal #2 Info : 30M x 0.32mm x0.5µm

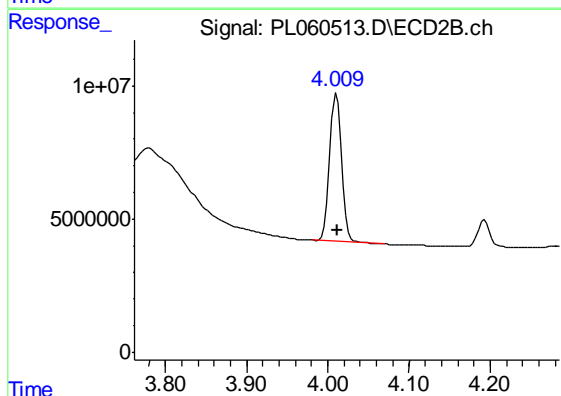




#1 Tetrachloro-m-xylene

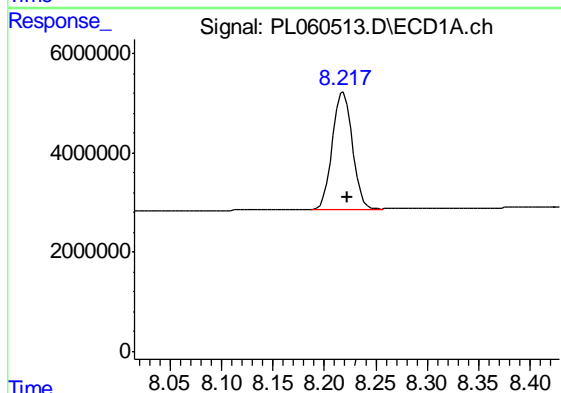
R.T.: 3.464 min
 Delta R.T.: -0.001 min
 Response: 34155548
 Conc: 17.14 ng/ml

Instrument :
 ECD_L
 ClientSampleId :
 JTY1-WC-S-0203



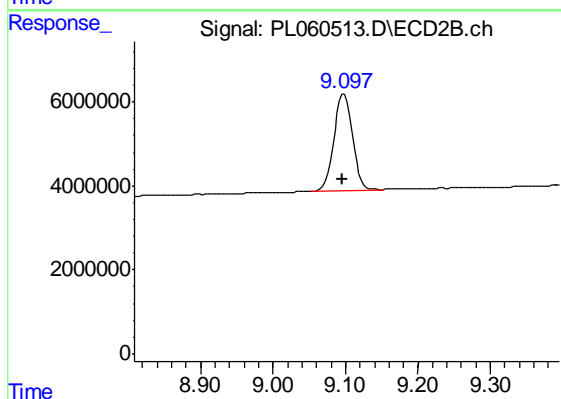
#1 Tetrachloro-m-xylene

R.T.: 4.011 min
 Delta R.T.: -0.002 min
 Response: 56071292
 Conc: 21.44 ng/ml



#28 Decachlorobiphenyl

R.T.: 8.219 min
 Delta R.T.: -0.004 min
 Response: 32047311
 Conc: 21.00 ng/ml



#28 Decachlorobiphenyl

R.T.: 9.098 min
 Delta R.T.: 0.003 min
 Response: 40985636
 Conc: 22.79 ng/ml